

Spring 2010

Spring 2010 AASU Data Digest

Armstrong State University

Follow this and additional works at: <https://digitalcommons.georgiasouthern.edu/armstrong-data-digests>

Recommended Citation

Armstrong State University, "Spring 2010 AASU Data Digest" (2010). *Armstrong Data Digests*. 15.
<https://digitalcommons.georgiasouthern.edu/armstrong-data-digests/15>

This other is brought to you for free and open access by the Armstrong Office of Institutional Research at Digital Commons@Georgia Southern. It has been accepted for inclusion in Armstrong Data Digests by an authorized administrator of Digital Commons@Georgia Southern. For more information, please contact digitalcommons@georgiasouthern.edu.



Armstrong Atlantic State University

Spring 2010 Data Digest

Published by the Office of Institutional Research
912.344.3235
www.ir.armstrong.edu



Table of Contents

At A Glance

Armstrong at a Glance	1
Five Year Undergraduate & Graduate Enrollment Trends	3

Enrollment

Undergraduate Headcount Enrollment	4
Graduate Headcount Enrollment	5
Undergraduate Enrollment by FT/PT Status	6
Graduate Enrollment by FT/PT Status	7
Undergraduate Enrollment by Ethnic Group	8
Graduate Enrollment by Ethnic Group	9
Undergraduate Enrollment by County of Origin	10
Graduate Enrollment by County of Origin	12
Learning Support Enrollment	14

Student Credit Hours

Student Credit Hours by College and University	15
Total Student Credit Hours	16
Breakdown of University Credit Hour Comparison	17
Departmental Productivity Ratios	18

Lecture Section Size

Lecture Sections by Level	19
---------------------------	----

Armstrong Atlantic At A Glance

	<u>Undergraduates</u>	<u>Graduates</u>	<u>Overall</u> <u>Total</u>
Enrollment, Spring 2010	6,149	863	7,012
Enrollment, Spring 2009	5,916	888	6,804
Percent Change in Enrollment	3.9%	-2.8%	3.1%
Percent Full-Time*	70.1%	35.9%	65.3%
Percent Part-Time*	29.9%	64.1%	34.7%
Attempted Student Credit Hours, Spring 2010	72,963	6,752	79,715
Attempted Student Credit Hours, Spring 2009	69,111	6,209	75,320
Percent Change in Hours	5.6%	8.7%	5.8%
FTE, Spring 2010**			6,054
FTE, Spring 2009**			5,779
Percent Change in FTE			4.8%
Percent Female	64.9%	78.5%	66.6%
Percent Male	35.1%	21.5%	33.4%

Enrollment by Level of Classification

Freshmen/Joint Enrollment	1,835	26.2%
Sophomore	1,366	19.5%
Junior	1,231	17.6%
Senior	1,586	22.6%
Transient/Other	131	1.9%
Graduate	863	12.3%

Enrollment by Ethnic Group

American Indian/Alaskan Native	49	0.7%
Asian/Pacific Islander	235	3.4%
Black/Non-Hispanic	1,603	22.9%
Hispanic	283	4.0%
Multi-Racial	56	0.8%
White/Non-Hispanic	5,046	72.0%

* Full-time status is based upon 12 or more SCH for undergraduates and 9 or more SCH for graduates. Part-time is less than 12 for undergraduates and less than 9 for graduates.

** FTE is the Board of Regents definition of full-time equivalency.

Enrollment by Type of Residency

Georgia Residents	6,042	86.2%
Out-of-State	845	12.1%
Foreign Students	125	1.8%

New Student Enrollment by Classification

Joint Enrollment	7	0.9%
Beginning Freshmen	236	31.7%
Transfer Freshmen	104	14.0%
Transfer Sophomore	108	14.5%
Transfer Junior	71	9.5%
Transfer Senior	34	4.6%
Transient/Other	54	7.2%
Graduate	131	17.6%
Total	745	100.0%

Students Enrolled in Learning Support Courses

(Unduplicated Headcount)

Due to System Requirement	209
Due to Institution Requirement	2
Due to Voluntary Enrollment	29
Total	240

Average Age

Undergraduate	25.6
Graduate	34.0

Age by Gender

	Female	Male	Total
24 and younger	2,642	1,475	4,117
	37.7%	21.0%	58.7%
25-35	1,367	629	1,996
	19.5%	9.0%	28.5%
36-55	602	191	793
	8.6%	2.7%	11.3%
56 and older	66	42	108
	0.9%	0.6%	1.5%
TOTAL	4,677	2,337	7,014

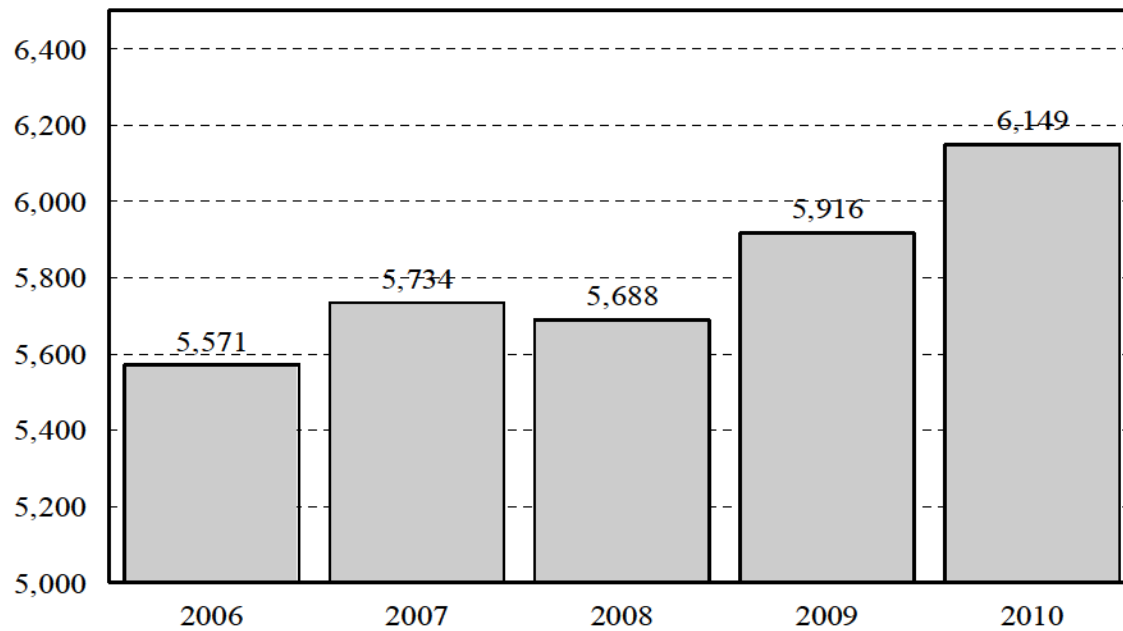
Five-Year Undergraduate and Graduate Enrollment Trends at a Glance

	Spring 2006	Spring 2007	Spring 2008	Spring 2009	Spring 2010	5 Year # Change	% Change
Headcount	6,279	6,344	6,470	6,804	7,012	733	11.7%
FTE	5,089	5,230	5,411	5,779	6,054	965	19.0%
Ethnic Status							
American Indian	23	23	25	26	49	26	113.0%
Asian	194	193	205	239	235	41	21.1%
Black	1,426	1,450	1,485	1,567	1,603	177	12.4%
Hispanic	210	231	232	245	283	73	34.8%
Multi-Racial	345	360	417	501	56	-289	-83.8%
White	4,081	4,087	4,106	4,226	5,046	965	23.6%
County of Origin							
Chatham	2,729	2,680	2,708	2,840	2,934	205	7.5%
Bryan	384	431	453	445	481	97	25.3%
Camden	99	88	105	88	78	-21	-21.2%
Effingham	334	369	362	385	428	94	28.1%
Glynn	176	178	175	191	156	-20	-11.4%
Liberty	579	572	557	504	521	-58	-10.0%
Long/McIntosh	66	67	83	83	68	2	3.0%
Other GA Counties	1,099	1,123	1,192	1,419	1,628	529	48.1%
Out of State	879	903	918	932	720	-159	-18.1%

Undergraduate Headcount Enrollment

Undergraduate Enrollment							
	Spring 2006	Spring 2007	Spring 2008	Spring 2009	Spring 2010	5 Year # Change	5 Year % Change
Total	5,571	5,734	5,688	5,916	6,149	578	10.4%
# Change		163	-46	228	233		
% Change		2.9%	-0.8%	4.0%	3.9%		

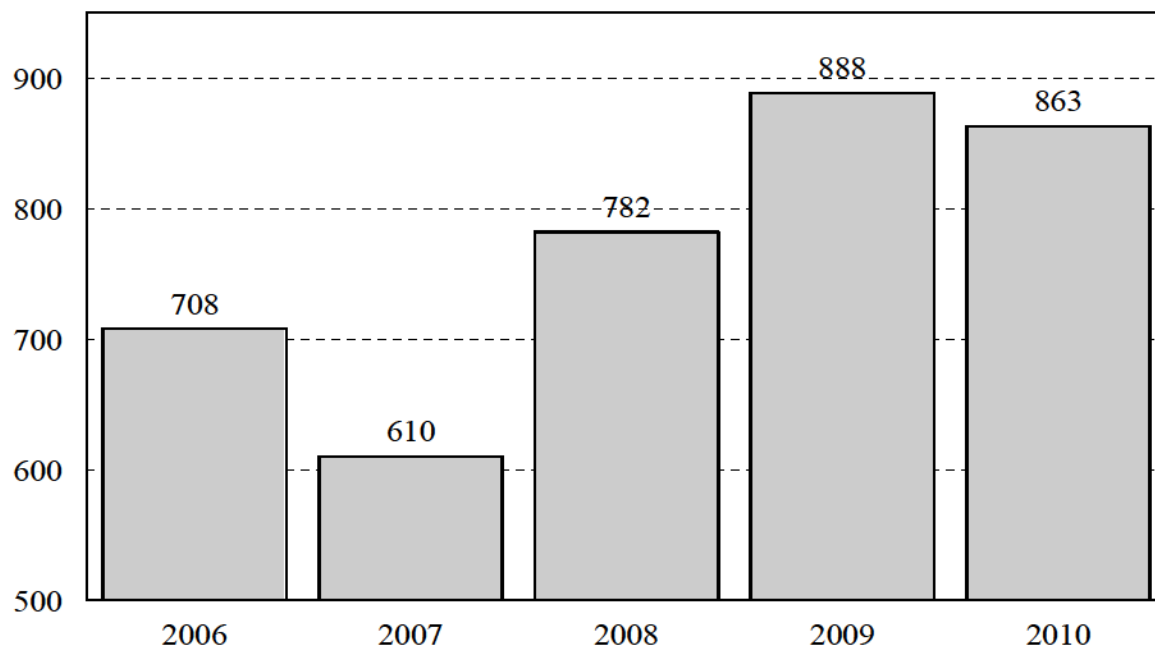
Undergraduate Headcount Enrollment



Graduate Headcount Enrollment

Graduate Enrollment							
	Spring 2006	Spring 2007	Spring 2008	Spring 2009	Spring 2010	5 Year # Change	5 Year % Change
Total	708	610	782	888	863	155	21.9%
# Change		-98	172	106	-25		
% Change		-13.8%	28.2%	13.6%	-2.8%		

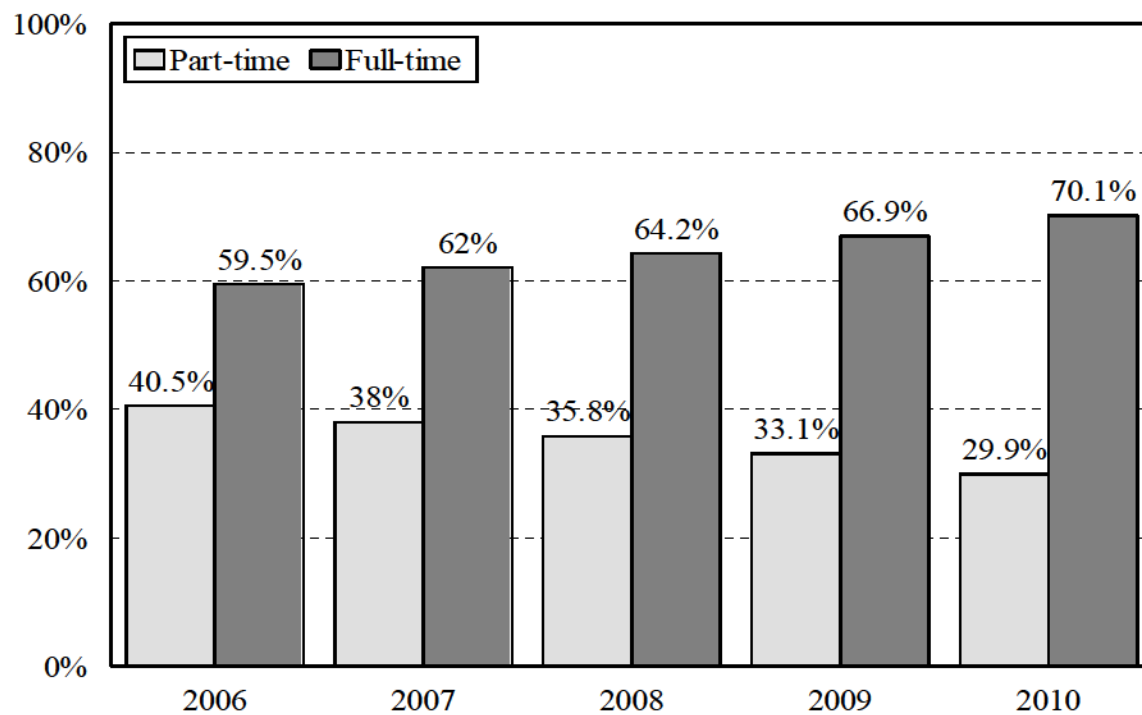
Graduate Headcount Enrollment



Undergraduate Enrollment by FT/PT Status

As a Percentage of Undergraduates						
	Spring 2006	Spring 2007	Spring 2008	Spring 2009	Spring 2010	5 Year % Change
% Full-Time	59.5%	62.0%	64.2%	66.9%	70.1%	17.8%
% Part-Time	40.5%	38.0%	35.8%	33.1%	29.9%	-26.2%

Undergraduate Enrollment by Full-time/Part-time Status

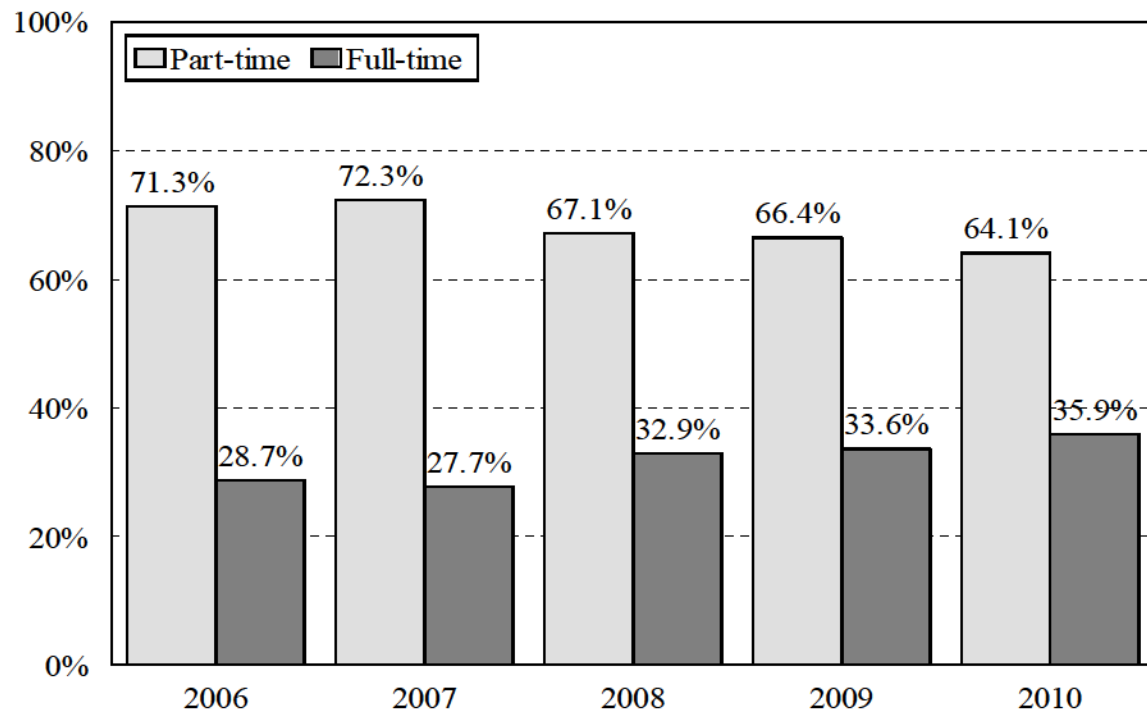


Note: Full-time undergraduate students are enrolled for 12 credit hours or more and part-time undergraduates for less than 12 credit hours.

Graduate Enrollment by FT/PT Status

As a Percentage of Graduates						
	Spring 2006	Spring 2007	Spring 2008	Spring 2009	Spring 2010	5 Year % Change
% Full-Time	28.7%	27.7%	32.9%	33.6%	35.9%	25.1%
% Part-Time	71.3%	72.3%	67.1%	66.4%	64.1%	-10.1%

Graduate Enrollment by Full-time/Part-time Status

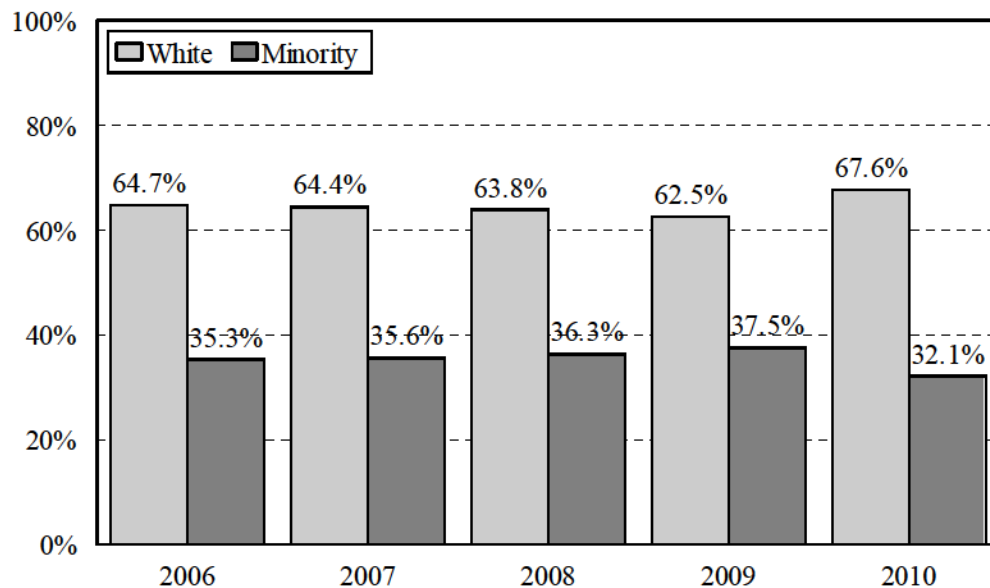


Note: Full-time graduate students are enrolled for 9 SCH or more and part-time graduates for less than 9 SCH.

Undergraduate Enrollment by Ethnic Group

As a Percentage of Undergraduates					
	Spring 2006	Spring 2007	Spring 2008	Spring 2009	Spring 2010
Amer. Indian/Alaskan	0.4%	0.4%	0.4%	0.4%	0.7%
Asian/Pacific Islander	3.2%	3.2%	3.4%	3.8%	3.5%
Black/Non-Hispanic	22.2%	22.2%	22.2%	22.3%	22.5%
Hispanic	3.6%	3.9%	3.8%	3.8%	4.5%
Multiracial	5.9%	5.9%	6.5%	7.2%	0.9%
Total Minority	35.3%	35.6%	36.3%	37.5%	32.1%
White/Non-Hispanic	64.7%	64.4%	63.8%	62.5%	67.6%

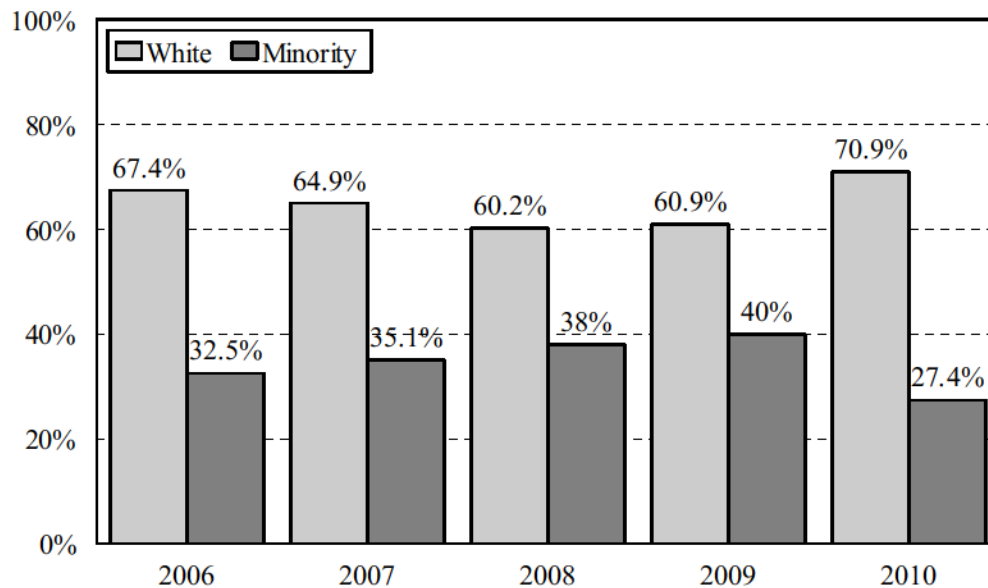
Undergraduate Enrollment by Ethnic Group



Graduate Enrollment by Ethnic Group

As a Percentage of Graduates					
	Spring 2006	Spring 2007	Spring 2008	Spring 2009	Spring 2010
Amer. Indian/Alaskan	0.1%	0.2%	0.4%	0.2%	0.3%
Asian/Pacific Islander	2.4%	2.0%	1.9%	1.2%	1.9%
Black/Non-Hispanic	26.8%	29.0%	27.7%	28.0%	23.5%
Hispanic	1.1%	0.8%	1.7%	2.0%	1.7%
Multiracial	2.1%	3.1%	6.3%	8.6%	0.0%
Total Minority	32.5%	35.1%	38.0%	40.0%	27.4%
White/Non-Hispanic	67.4%	64.9%	60.2%	60.9%	70.9%

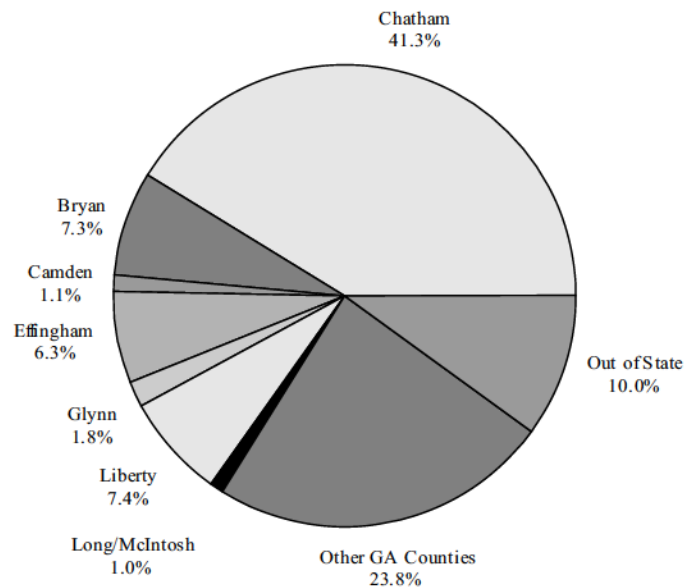
Graduate Enrollment by Ethnic Group



Undergraduate Enrollment by County of Origin

As a Percentage of Undergraduates						
	Spring 2006	Spring 2007	Spring 2008	Spring 2009	Spring 2010	5 Year % Change
Chatham County	43.7%	42.5%	41.4%	41.4%	41.3%	-5.5%
Bryan County	6.5%	7.0%	7.3%	6.9%	7.3%	12.3%
Camden County	1.5%	1.4%	1.6%	1.3%	1.1%	-26.7%
Effingham County	5.7%	6.1%	5.8%	5.9%	6.3%	10.3%
Glynn County	2.6%	2.7%	2.3%	2.4%	1.8%	-30.8%
Liberty County	9.4%	9.3%	8.8%	7.7%	7.4%	-21.3%
Long/McIntosh Counties	1.0%	1.1%	1.2%	1.3%	1.0%	1.7%
Other GA Counties	19.3%	28.6%	20.9%	22.2%	23.8%	23.3%
Out of State	10.3%	1.3%	10.7%	10.9%	10.0%	-2.9%

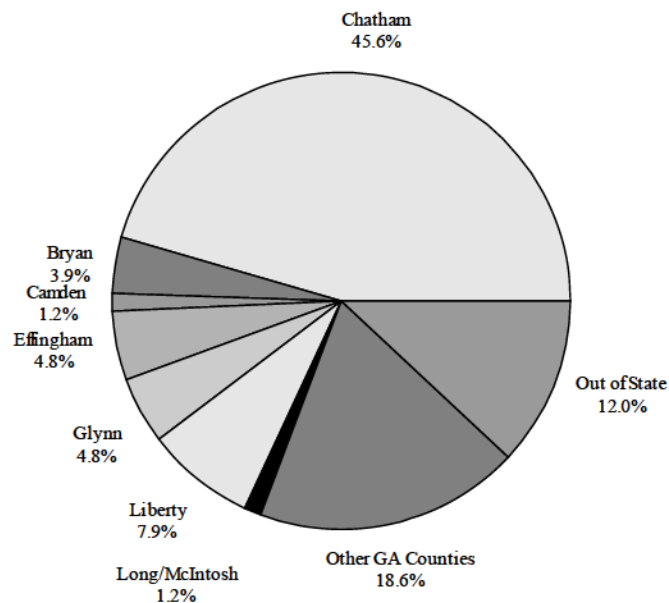
Undergraduate Enrollment by County of Origin



Graduate Enrollment by County of Origin

As a Percentage of Graduates						
	Spring 2006	Spring 2007	Spring 2008	Spring 2009	Spring 2010	5 Year % Change
Chatham County	41.8%	40.0%	43.4%	46.7%	45.6%	9.1%
Bryan County	3.0%	4.4%	4.6%	4.4%	3.9%	30.0%
Camden County	2.1%	1.1%	1.9%	1.6%	1.2%	-42.9%
Effingham County	2.5%	3.6%	3.7%	4.6%	4.8%	92.0%
Glynn County	4.2%	3.8%	5.2%	5.8%	4.8%	14.3%
Liberty County	7.8%	6.1%	6.7%	6.0%	7.9%	1.3%
Long/McIntosh Counties	1.1%	1.0%	1.4%	1.3%	1.2%	9.1%
Other GA Counties	21.0%	24.8%	20.9%	19.9%	18.6%	-11.4%
Out of State	16.5%	15.2%	12.2%	9.7%	12.0%	-27.3%

Graduate Enrollment by County of Origin

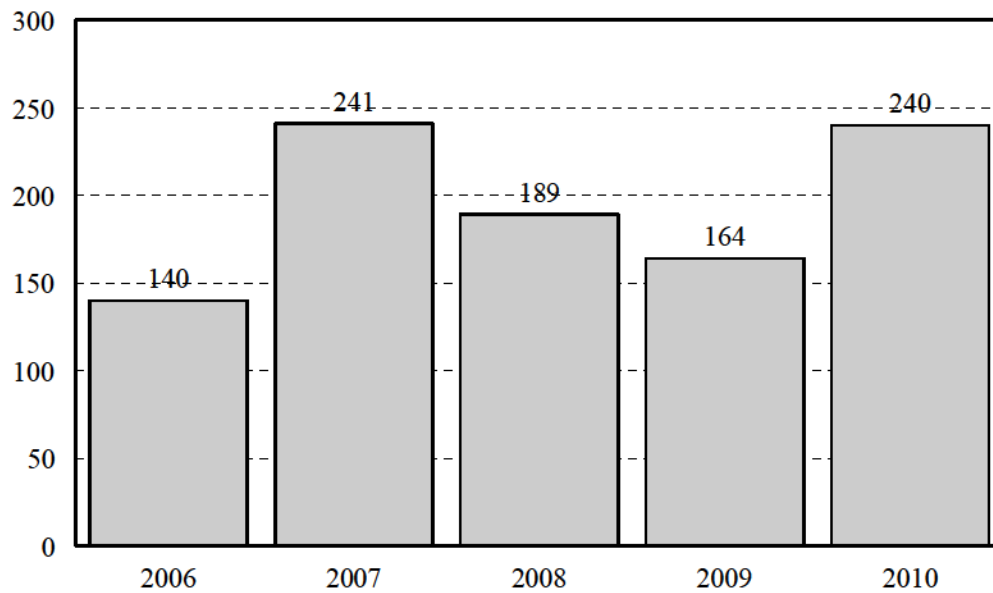


A map of the state of Georgia, outlined in black. The map is divided into its constituent counties by thin black lines. Overlaid on this map are 100 small black dots, representing sampling locations. The dots are distributed across the state, but there are notable concentrations. A large, dense cluster of dots is located in the northeastern corner of the state, covering parts of Wilkes, Spalding, and Baldwin counties. Another significant cluster is found in the western part of the state, primarily in the counties of DeKalb, Douglas, and Clayton. Smaller, more dispersed groups of dots are scattered throughout the central and southern regions of the state. The overall pattern suggests a higher density of sampling in the more populated and agriculturally intensive areas of the state.

Learning Support Enrollment

Enrollment							
	Spring 2006	Spring 2007	Spring 2008	Spring 2009	Spring 2010	5 Year # Change	5 Year % Change
Learning Support	140	241	189	164	240	100	71.4%
# Change		101	-52	-25	76		
% Change		72.1%	-21.6%	-13.2%	46.3%		

Learning Support Enrollment



Note: Learning Support enrollment numbers include voluntary LS students.

Source: University System of Georgia SIRS Report

Graduate & Undergraduate Student Credit Hours by College and University

Spring 2010 Credit Hours					
	Undergrad	Graduate	Total	Percent of	Percent of
	SCH	SCH	SCH	College	University
Early Childhood Education	1,544	1,254	2,798	28.1%	3.5%
Health & Physical Education	2,744	0	2,744	27.6%	3.4%
Middle & Secondary Education	1,047	912	1,959	19.7%	2.4%
Special & Adult Education	1,107	1,333	2,440	24.5%	3.0%
Total: College of Education	6,442	3,499	9,941	100.0%	12.3%
Communication Sciences & Disorders	318	222	540	4.1%	0.7%
Dental Hygiene	451	0	451	3.4%	0.6%
Health Sciences	1,881	1,079	2,960	22.3%	3.7%
Medical Technology	613	0	613	4.6%	0.8%
Nursing	4,664	296	4,960	37.3%	6.1%
Physical Therapy	162	1,014	1,176	8.8%	1.5%
Radiologic Sciences	1,700	0	1,700	12.8%	2.1%
Respiratory Therapy	900	0	900	6.8%	1.1%
Total: College of Health Professions	10,689	2,611	13,300	100.0%	16.4%
Art, Music, & Theatre	5,577	24	5,601	18.9%	6.9%
C.J., Social & Political Science	6,098	147	6,245	21.0%	7.7%
Economics	1,326	0	1,326	4.5%	1.6%
History	6,783	200	6,983	23.5%	8.6%
Languages, Literature, & Philosophy	9,450	81	9,531	32.1%	11.8%
Total: College Liberal Arts	29,234	452	29,686	100.0%	36.7%
Biology	7,329	0	7,329	29.9%	9.1%
Chemistry & Physics	3,918	0	3,918	16.0%	4.8%
Information, Computing, and Engineering	2,819	106	2,925	11.9%	3.6%
Mathematics	7,165	18	7,183	29.3%	8.9%
Psychology	3,138	12	3,150	12.9%	3.9%
Total: College of Science & Technology	24,369	136	24,505	100.0%	30.3%
AASU 1101	642	0	642		0.8%
Interdisciplinary Studies	1,363	30	1,393		1.7%
Law Enforcement Training Center	1,346	0	1,346		1.7%
Military/Naval Science	140	0	140		0.2%
Total: AASU	74,225	6,728	80,953		100.0%

Spring Breakdown of University Credit Hours

	Spring 2006	Spring 2007	Spring 2008	Spring 2009	Spring 2010	5 Year % Change
Early Childhood Education	4.4%	4.9%	4.1%	4.1%	3.5%	-21.4%
Health & Physical Education	3.1%	3.4%	3.6%	3.5%	3.4%	9.3%
Middle & Secondary Education	2.5%	2.0%	2.4%	2.4%	2.4%	-3.2%
Special & Adult Education	3.6%	3.9%	3.5%	3.4%	3.0%	-16.3%
Total: College of Education	13.6%	14.2%	13.6%	13.4%	12.3%	-9.7%
% Change		0.6%	-0.6%	-0.2%	-1.1%	
Communication Sciences & Disorders	0.5%	0.5%	0.5%	0.4%	0.7%	33.4%
Dental Hygiene	0.9%	0.7%	0.7%	0.7%	0.6%	-38.1%
Health Science	3.4%	3.8%	3.8%	4.0%	3.7%	7.5%
Medical Technology	0.7%	1.0%	1.0%	1.0%	0.8%	8.2%
Nursing	5.3%	4.4%	5.0%	5.6%	6.1%	15.6%
Physical Therapy	0.9%	0.7%	1.1%	1.3%	1.5%	61.4%
Radiologic Sciences	1.3%	2.1%	2.2%	1.9%	2.1%	161.5%
Respiratory Therapy	0.8%	0.8%	0.9%	0.9%	1.1%	39.0%
Total: College of Health Professions	13.8%	14.0%	15.3%	15.8%	16.4%	19.1%
% Change		0.2%	1.3%	0.5%	0.6%	
Art, Music, & Theatre	7.6%	7.2%	6.6%	6.4%	6.9%	-9.0%
CJ, Social, & Political Science	5.8%	6.4%	5.9%	6.4%	7.7%	33.0%
Economics	2.3%	2.0%	1.9%	1.8%	1.6%	-28.8%
History	8.4%	8.9%	8.2%	8.1%	8.6%	2.7%
Interdisciplinary Studies	0.5%	0.8%	2.6%	3.3%	1.7%	240.0%
Languages, Literature, & Philosophy	11.6%	11.8%	11.1%	10.9%	11.8%	1.7%
Total: College of Liberal Arts	36.2%	37.1%	36.3%	36.9%	38.4%	6.1%
% Change		0.9%	-0.8%	0.6%	1.5%	
Biology	10.2%	10.9%	10.7%	9.2%	9.1%	-11.2%
Chemistry & Physics	6.2%	6.0%	6.5%	5.9%	4.8%	-21.9%
Information, Computing, and Engineering	3.8%	3.7%	3.7%	3.3%	3.6%	-5.3%
Mathematics	8.9%	8.8%	8.7%	7.9%	8.9%	-0.3%
Psychology	4.0%	4.2%	3.8%	3.4%	3.9%	-2.7%
Total: School of Science and Techonology	33.1%	33.6%	33.4%	29.7%	30.3%	-8.6%
% Change		0.5%	-0.2%	-3.7%	0.6%	
AASU 1101	0.1%	0.1%	0.0%	0.1%	0.8%	700.0%
% Change		0.0%	0.1%	0.1%	0.7%	
Law Enforcement Training Center	0.1%	0.1%	1.3%	4.0%	1.7%	1600.0%
% Change		0.0%	-0.2%	-0.2%	-2.3%	
Military/Naval Science	0.9%	0.9%	0.1%	0.1%	0.2%	-77.8%
% Change		0.0%	0.0%	0.0%	0.1%	

* Departmental changes were made which would result in inappropriate comparison

Note: Totals may not equal 100% due to rounding.

Lecture Sections by Level

Department by Level	Subject	Number of Sections	Number Enrolled	Average Class Size
COLLEGE OF EDUCATION				
Early Childhood Education				
Lower Level	ISCI	3	46	15.3
Upper Level	ECUG	13	314	24.2
Graduate	ECEG	6	86	14.3
	ECMT	5	137	27.4
Early Childhood Education Totals		27	583	21.6
Health and Physical Education				
Lower Level	PEAT	1	17	17.0
	PEBC	12	359	29.9
	PEEC	2	41	20.5
	PEHM	2	52	26.0
Upper Level	PEEC	2	35	17.5
	PEHM	7	128	18.3
Health & Physical Education Totals		26	632	24.3
Middle and Secondary Education				
Upper Level	MGSE	7	99	14.1
Graduate	MGED	1	10	10.0
	MGSE	9	209	23.2
Middle & Secondary Education Totals		17	318	18.7
Special and Adult Education				
Lower Level	CEUG	2	53	26.5
Upper Level	CEUG	1	14	14.0
	SPED	6	76	12.7
Graduate	ADED	6	84	14.0
	EEXE	7	165	23.6
Special & Adult Education Totals		22	392	17.8

Department by Level	Subject	Number of Sections	Number Enrolled	Average Class Size
Education Dean				
Lower Level	EDUC	12	364	30.3
Upper Level	EDUC	12	227	18.9
Graduate	EDUC	10	245	24.5
	FOUN	6	87	14.5
	RDEN	5	90	18.0
Education Dean Totals		45	1013	22.5

COLLEGE OF HEALTH PROFESSIONS

Communication Sciences and Disorders				
Lower Level	CSDS	3	59	19.7
Upper Level	CSDS	6	47	7.8
Graduate	CSDS	6	66	11.0
Communication Sciences & Disorders Total		15	172	11.5

Health Science				
Lower Level	HLPR	4	38	9.5
	HSCC	2	64	32.0
	HSCP	1	27	27.0
Upper Level	GERO	1	41	41.0
	HSCA	6	142	23.7
	HSCC	4	105	26.3
	HSCP	2	62	31.0
	PUBH	5	128	25.6
	SMED	2	29	14.5
Graduate	GERO	1	5	5.0
	MHSA	15	116	7.7
	PUBH	18	151	8.4
	SMED	4	38	9.5
Health Science Totals		65	946	14.6

Medical Technology				
Upper Level	MEDT	9	108	12.0
Medical Technology Totals		9	108	12.0

Department by Level	Subject	Number of Sections	Number Enrolled	Average Class Size
Nursing				
Upper Level	NURS	17	812	47.8
Graduate	NURS	8	82	10.3
Nursing Totals		25	894	35.8
Physical Therapy				
Upper Level	RHAB	3	53	17.7
Physical Therapy Totals		3	53	17.7
Radiologic Sciences				
Upper Level	RADS	24	404	16.8
Radiologic Sciences Total		24	404	16.8
Respiratory Therapy				
Lower Level	RESP	4	106	26.5
Upper Level	RESP	5	98	19.6
Respiratory Therapy Totals		9	204	22.7

COLLEGE OF LIBERAL ARTS

Art, Music, and Theatre				
Lower Level	ARTS	27	667	24.7
	COMM	6	142	23.7
	MUSC	11	337	30.6
	THEA	6	131	21.8
Upper Level	ARTS	22	259	11.8
	COMM	1	19	19.0
	FILM	3	38	12.7
	MUSC	7	58	8.3
	THEA	10	127	12.7
Graduate Level	ARTS	3	6	2.0
	FILM	1	1	1.0
Art, Music, & Theatre Totals		97	1785	18.4

Department by Level	Subject	Number of Sections	Number Enrolled	Average Class Size
Criminal Justice, Political Science, and Social Science				
Lower Level	ANTH	4	166	41.5
	CRJU	19	469	24.7
	GEOG	3	123	41.0
	HUMN	1	1	1.0
	POLS	22	607	27.6
	RELI	2	59	29.5
	SOCI	7	362	51.7
Upper Level	ANTH	1	15	15.0
	CRJU	14	177	12.6
	GEOG	1	13	13.0
	POLS	13	194	14.9
	RELI	1	4	4.0
	SOCI	3	35	11.7
Graduate	CRJU	3	34	11.3
	GEOG	1	2	2.0
	POLS	3	6	2.0
	SOCI	1	7	7.0
Criminal Justice, Poli. Sci., & Social Sci. To		99	2274	23.0
Economics				
Lower Level	ECON	8	258	32.3
Upper Level	ECON	10	169	16.9
Economics Totals		18	427	23.7
History				
Lower Level	HIST	48	1867	38.9
Upper Level	HIST	13	228	17.5
Graduate	HIST	9	56	6.2
History Totals		70	2151	30.7

Department by Level	Subject	Number of Sections	Number Enrolled	Average Class Size
Languages, Literature, & Philosophy				
Lower Level	ENGL	70	1681	24.0
	ETHC	2	118	59.0
	FREN	2	49	24.5
	GRMN	2	12	6.0
	PHIL	11	324	29.5
	SPAN	15	361	24.1
Upper Level	ENGL	22	436	19.8
	FREN	1	6	6.0
	JOUR	1	6	6.0
	PHIL	2	42	21.0
	SPAN	6	73	12.2
Graduate	ENGL	7	20	2.9
Languages, Literature, & Philosophy Totals		141	3128	22.2

COLLEGE OF SCIENCE AND TECHNOLOGY

Biology				
Lower Level	BIOL	35	1556	44.5
Upper Level	BIOL	14	359	25.6
Biology Totals		49	1915	39.1
Chemistry & Physics				
Lower Level	CHEM	18	509	28.3
	PHSC	1	80	80.0
	PHYS	7	202	28.9
Upper Level	CHEM	7	52	7.4
	PHYS	2	10	5.0
Chemistry & Physics Totals		35	853	24.4

Department by Level	Subject	Number of Sections	Number Enrolled	Average Class Size
Information, Computing, and Engineering				
Lower Level	CSCI	20	389	19.5
	ENGR	7	152	21.7
	ITEC	6	143	23.8
	WBIT	5	24	4.8
Upper Level	CSCI	6	72	12.0
	ENGR	2	29	14.5
	ITEC	6	117	19.5
	WBIT	4	12	3.0
Graduate	CSCI	4	27	6.8
Computer Science Totals		60	965	16.1
Psychology				
Lower Level	PSYC	21	701	33.4
Upper Level	PSYC	15	330	22.0
Graduate	PSYC	1	4	4.0
Psychology Totals		37	1035	28.0

Department by Level	Subject	Number of Sections	Number Enrolled	Average Class Size
Interdisciplinary Studies				
Lower Level	AASU	3	42	14.0
	ACCT	1	15	15.0
	AFAS	1	39	39.0
	BUSA	1	17	17.0
	EURO	1	16	16.0
	GWST	3	97	32.3
	HONS	1	11	11.0
	READ	1	24	24.0
	RGTE	2	37	18.5
	RGTR	2	49	24.5
Upper Level	GWST	3	9	3.0
Graduate	GWST	1	2	2.0
	HRVD	1	11	11.0
	MALP	1	8	8.0
Interdisciplinary Studies Totals		22	377	17.1
Law Enforcement Training Center				
Lower Level	LETC	54	227	4.2
Law Enforcement Training Center Totals		54	227	4.2
Military Science				
Lower Level	MILS	5	40	8.0
	NSCI	2	6	3.0
Upper Level	MILS	2	12	6.0
	NSCI	2	5	2.5
Military Science Totals		11	63	5.7