

Reflector

1941

Georgia Southern University

Follow this and additional works at: <https://digitalcommons.georgiasouthern.edu/reflector-yearbook>



Part of the [Higher Education Commons](#)

Recommended Citation

Georgia Southern University, "Reflector" (1941). *Reflector Yearbook*. 14.
<https://digitalcommons.georgiasouthern.edu/reflector-yearbook/14>

This book is brought to you for free and open access by the Student Media at Digital Commons@Georgia Southern. It has been accepted for inclusion in Reflector Yearbook by an authorized administrator of Digital Commons@Georgia Southern. For more information, please contact digitalcommons@georgiasouthern.edu.



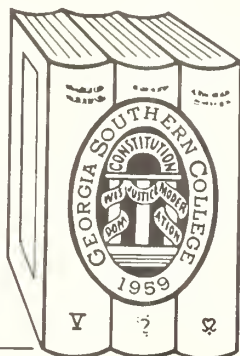
572.758

1929

1929

1929

GEORGIA
SOUTHERN COLLEGE
LIBRARY



GEORGIA
HENDERS COLLEGE
LIBRARY



Georgia Southern College

Zach S. Henderson Library

Georgia Southern University
Zach S. Henderson Library

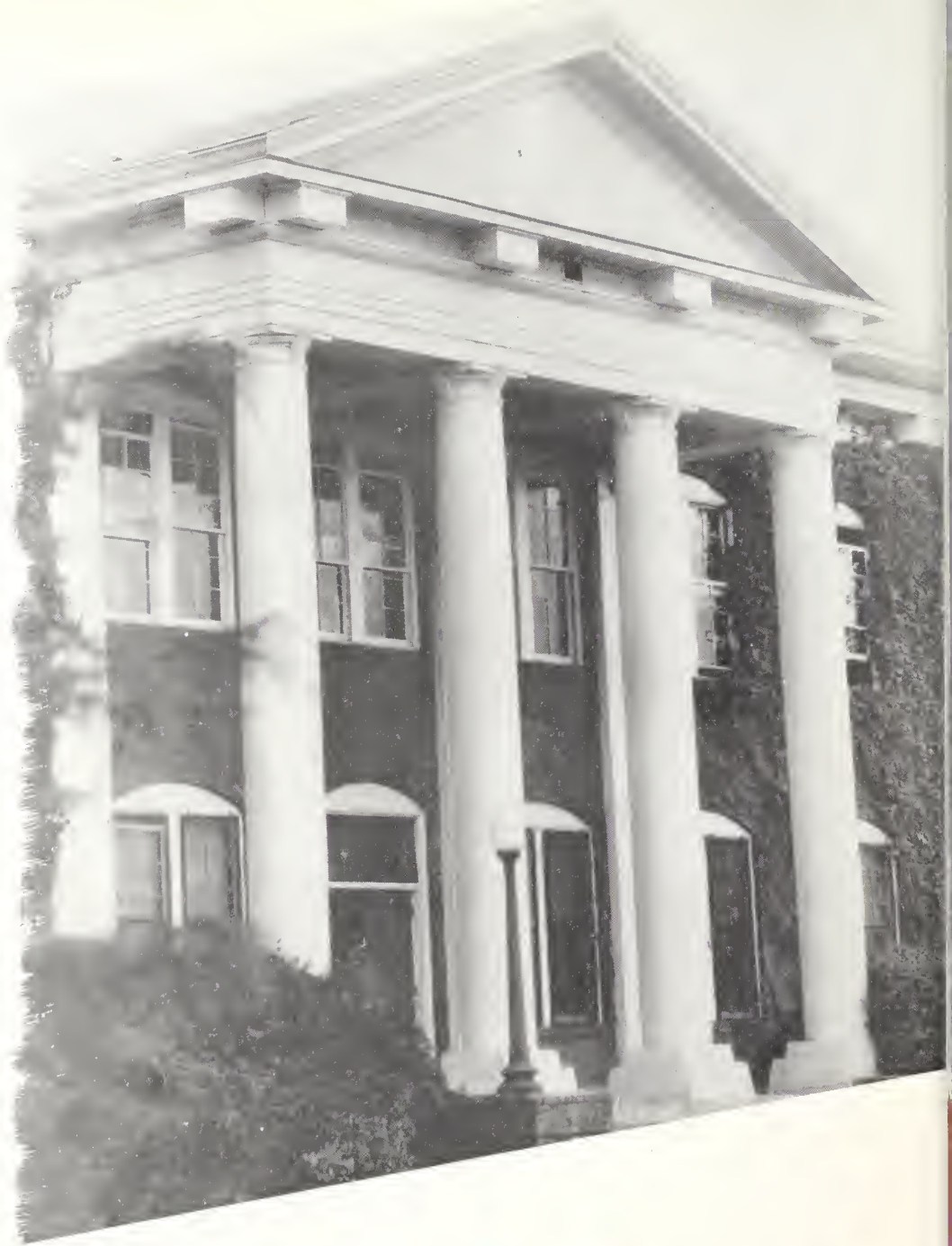


Digitized by the Internet Archive
in 2014

<https://archive.org/details/reflector1941na>

1941

REFLECTOR



Copyright 1941

CATHERINE GAINEY

GESMON NEVILLE

Editor

Business Manager

1941 RE

YEARBOOK OF GEORGIA TEACHERS

Published by
THE SENIOR CLASS

COLLEGE • COLLEGEBORO



FLECTOR

FOREWORD AND DEDICATION

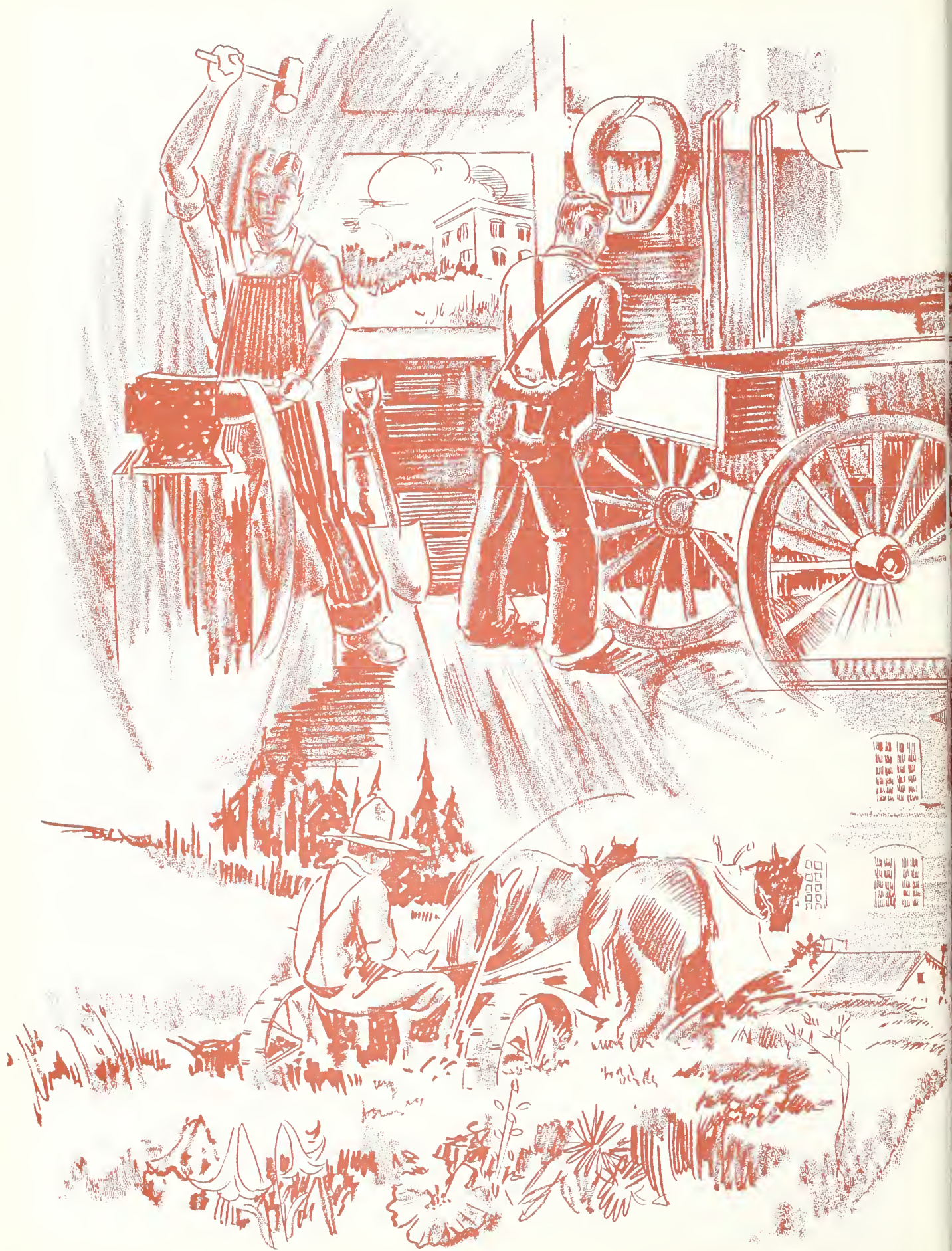


Foremost in the acquirements at college are friends. During the days spent on the college campus students meet and acquaint themselves with people that otherwise they would never have met. The school yearbook is a symbol of this spirit of college friendship. It is herein that this campus spirit is portrayed in a form that is thoroughly representative and truly permanent. Years afterward, when college days are but a dim memory, a mere casual glance at the pages of the REFLECTOR can recall in all vividness the happy and cherished days of college life. Such is the purpose of the college yearbook; such, it is hoped, will be the function of this annual of Georgia Teachers College.

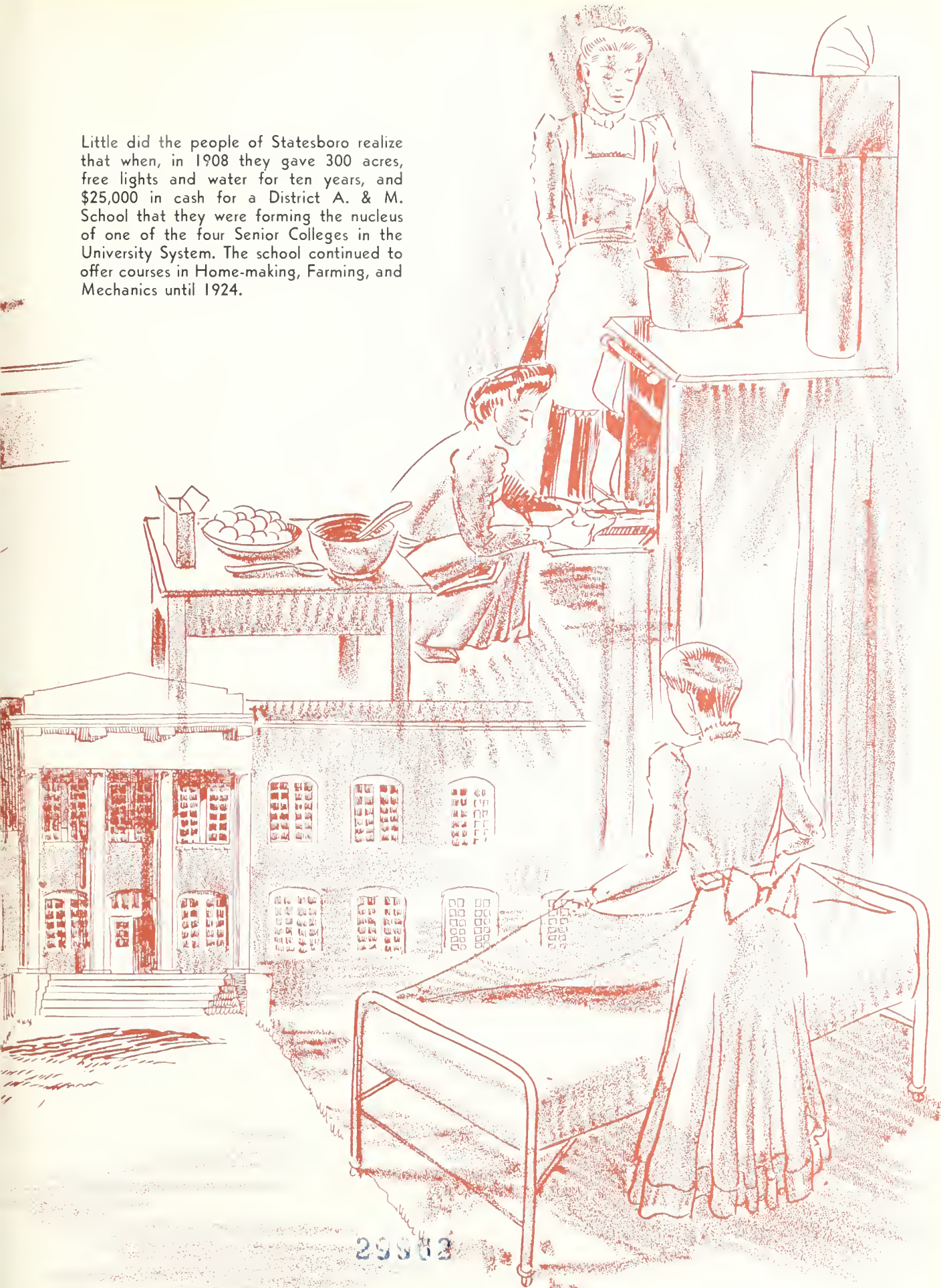
Scattered from east to west, from north to south, all over the state of Georgia and neighboring states, are former students of Georgia Teachers College. Out in the field of life they are disseminating ideals and attitudes which they formulated and developed while students at T. C. Dedicated to the task of forwarding the principles of progressive education and of democratic living, they are dispersing the name of Georgia Teachers College among thousands of American citizens. From them too, will be drawn a great portion of the student body of the T. C. of the future; it will be their children and grandchildren that will be the standard-bearers of this school in the years to come. To these products of Georgia Teachers College, and for these meritorious reasons, we, the staff of the 1941 REFLECTOR, dedicate this issue of REFLECTOR—BE IT YOURS T. C. ALUMNI!







Little did the people of Statesboro realize that when, in 1908 they gave 300 acres, free lights and water for ten years, and \$25,000 in cash for a District A. & M. School that they were forming the nucleus of one of the four Senior Colleges in the University System. The school continued to offer courses in Home-making, Farming, and Mechanics until 1924.



CONTENTS



BOOK ONE

COLLEGE

BOOK TWO

ORGANIZATIONS AND ACTIVITIES

BOOK THREE

FEATURES

BOOK FOUR

ATHLETICS

BOOK FIVE

ADVERTISEMENTS



COLLEGE

FACULTY



Including

THE PRESIDENT
THE DEAN
OFFICERS OF ADMINISTRATION
THE FACULTY
SNAPS AND CAMPUS SCENES





A D M I

P R E S I D E N T
O F G E O R G I A
T E A C H E R S
C O L L E G E

MARVIN SUMMERS PITTMAN
A.B., Millsaps, 1905; M.A., University of Oregon, 1917; Ph.D.,
Columbia, 1921.

N I S T R A T I O N

FIELDING D. RUSSELL*

A.B., University of Georgia, 1929; M.A., University of
Georgia, 1930.

THE DEAN



*Acting Dean.

OFFICERS OF THE



JOSEPH E. CARRUTH

Director of Senior Division

A.B., Millsaps, 1905; M.A., Peabody, 1924;
Ph.D., Peabody, 1934.

CHESTER McARTHUR DESTLER

Director of Junior Division

A.B., Wooster College, 1925; A.M., University of Chicago, 1928; Ph.D., University of Chicago, 1932.

WALTER L. DOWNS

Director of Laboratory Schools

A.B., University of Georgia, 1909; M.A., University of Georgia, 1931.



CYNTHIA DAVIS

Director of Dining Hall

A.B., B.S.H.E.

ROY RABUN

Assistant to the Bursar

B.S., South Georgia Teachers College, 1938.

ROBERT LEE WINBURN

Bursar

MARVIN SUMMERS PITTMAN

President

A.B., Millsaps, 1905; M.A., University of Oregon, 1917; Ph.D., Columbia, 1921.



G E O R G I A T E A C H E R S

ADMINISTRATION

HELEN BRUCE
House Director
ALLENE C. MOORE
House Director
B.S.

SOPHIE JOHNSON
Dean of Men
B.S.

MAMIE VEAZEY
Dean of Women
A.B.



VIOLA PERRY
Registrar
B.S., Peabody, 1927; M.A., Peabody, 1929.

MAE MICHAEL
Secretary to the President

WENDELL WAYNE SMILEY
Librarian

A.B., University of North Carolina, 1928;
A.B.L.S., University of North Carolina, 1933;
M.A., University of Illinois, 1939.



ZACH SUDDATH HENDERSON*
Dean
B.S., Piedmont, 1922; M.A., Columbia, 1928.

*On Leave 1940-41.

C O L L E G E R E F L E C T O R

F A C U



ESTHER WILBURN BARNES
Music Diploma, Wesleyan, 1929; B.S., S. G. T. C., 1934
PIANO



J. KNAPP BODDIFORD
B.S., S. G. T. C., 1938; M.A., Ohio State University, 1939
INSTRUCTOR—LABORATORY SCHOOLS



RUTH BOLTON
B.S., Peabody, 1930; M.A., Peabody, 1931
HOME ECONOMICS

GENARIO HONEYCUTT BOWEN
B.S., Peabody, 1927
HEALTH AND PHYSICAL EDUCATION

Q. ELIZABETH COLLINS
B.S.
SECRETARY TO THE DIRECTOR OF LABORATORY SCHOOLS

J. WILLARD CARTEE
B.S., Georgia Teachers College, 1938
BUSINESS EDUCATION

ELIZABETH DONOVAN
B.S., Mercer, 1930; M.A., Columbia, 1935.
LABORATORY SCHOOLS—FIELD SERVICE

MARY EDNA GUNTER
B.S., Georgia Teachers College, 1940
LABORATORY SCHOOLS



L T Y

R. JOHN H. DeLOACH

A.B., University of Georgia, 1898; M.S., University of Georgia, 1906

SOCIOLOGY AND ECONOMICS

ROBERT F. DONALDSON

A.B., University of Georgia, 1927; M.A., Columbia, 1934
ENGLISH

GLADYS MARIE ESTES

A.B., Henderson State Teachers College, 1939; M.A., Peabody, 1940

INSTRUCTOR—LABORATORY SCHOOLS

SADIE E. FITZGERALD

B.S., Columbia, 1922; M.A., Columbia, 1923

INSTRUCTOR—LABORATORY SCHOOLS

JANE FRANSETH

A.B., Western State Teachers College, 1930; M.A., University of Michigan, 1936

LABORATORY SCHOOLS—FIELD SERVICE

BERTHA FREEMAN

B.S., Georgia Teachers College, 1937; M.A., Columbia, 1939

INSTRUCTOR—LABORATORY SCHOOLS

MARION GROOVER

A.B., George Washington University, 1929; M.A., Columbia, 1937

INSTRUCTOR—LABORATORY SCHOOLS

MARJORIE THOMAS GUARDIA

B.S., Peabody, 1928; M.A., Peabody, 1930
ENGLISH



F A C U



WILLIAM S. HANNER
A.B., Union University, 1925; M.A., Peabody, 1930
CHEMISTRY



ERNEST E. HARRIS
A.B., Catawba College, 1936; M.A., Columbia, 1940
MUSIC



HARRIS E. HARVILL
B.S., Georgia Teachers College, 1939
LABORATORY SCHOOLS



FAYE HILL
B.S., Western Kentucky Teachers College, 1931; M.S.,
Louisiana State University, 1938
PHYSICAL EDUCATION



IVAN HOSTETLER
A.B., Bluffton College, 1926; M.A., Ohio State University,
1931
INDUSTRIAL ARTS



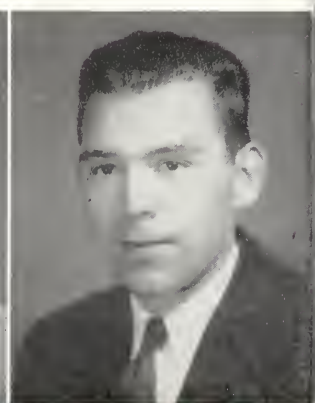
LESLIE W. JOHNSON
B.E., Winona State Teachers College, 1928; M.A., Colum-
bia, 1934
EDUCATION



MAMIE JOSEPHINE JONES
B.L.I., Emerson, 1927; B.A., Huntington, 1936; M.A.,
Northwestern, 1937
SPEECH



G. E. KITCHENS
B.S., University of Alabama, 1936; M.S., University of
Alabama, 1939
PHYSICAL EDUCATION



L T Y

ZULIEME LANE

B.S., Georgia Teachers College, 1929
ASSISTANT LIBRARIAN

LORRAN LATHAM

B.M., Eastman School of Music, 1939
VIOLIN

EVERETT G. LIVINGSTON

B.S., Kansas State Teachers College, 1926; M.S., Iowa
State College, 1930
INDUSTRIAL ARTS

HASSIE MAUDE McELVEEN

B.S., Georgia Teachers College, 1935; B.L.S., Peabody,
1940
ASSISTANT LIBRARIAN

JOHN JULIA McMAHON

B.S., East Texas Teachers College, 1933; M.A., Peabody,
1938
INSTRUCTOR—LABORATORY SCHOOLS

WILLIAM BURTON MOYE

A.B., Piedmont, 1916; M.S., Mercer, 1930
MATHEMATICS

RONALD J. NEIL

A.B., B.Mus., Kansas Wesleyan, 1925; M.Mus., Syracuse
University, 1931; M.A., University of Iowa, 1936.
MUSIC

HESTER NEWTON

A.B., Brenau, 1903; B.S., Peabody, 1927; M.A., Peabody,
1928
HISTORY AND SOCIAL SCIENCE



F A C U



MARVIN A. OWINGS
A.B., Wofford, 1931; M.A., Vanderbilt, 1932
ENGLISH



J. MALCOLM PARKER
B.M., Oberlin, 1934; M.M., University of Michigan, 1939
PUBLIC SCHOOL MUSIC



EWELL GLEN PIGG
B.S., Central Missouri State Teachers College, 1932; M.A.,
Peabody, 1936
INSTRUCTOR—LABORATORY SCHOOLS



R. D. PULLIAM
B.S.A., University of Georgia, 1930; M.S., University of
Georgia, 1940
AGRICULTURE



ELEANOR RAY
A.B., Western Kentucky Teachers, 1930; B.L.S., Peabody,
1933
ASSISTANT LIBRARIAN



JANE REID ROBSON
B.S., Columbia, 1909; M.A., Columbia, 1928
HOME ECONOMICS



RUBY N. CROUSE
ASSISTANT—REGISTRAR'S OFFICE



BYRON L. SMITH
B.Sc., Mercer University, 1925; M.A., Michigan, 1937
HEALTH AND PHYSICAL EDUCATION



L T Y

LEON PAUL SMITH

A.B., East Central State Teachers College, Oklahoma,
1934; M.A., Columbia, 1938

ART

ISA STANCIL

A.B., University of Georgia, 1926; M.A., University of
Georgia, 1935

ENGLISH

PAUL E. THOMPSON

B.S., Georgia Teachers College, 1931; M.Ed., Duke, 1935;
M.S., Georgia, 1938

EXACT SCIENCES

MALVINA TRUSSELL

B.S., Georgia State College for Women, 1925; M.S., Cor-
nell University, 1931

BIOLOGY

E. DAYMOND TURNER, JR.

A.B., Davidson, 1937; M.A., University of North Carolina,
1939

ROMANCE LANGUAGES

MARY WILL WAKEFORD

A.B., Wesleyan College, 1918; M.A., University of Geor-
gia, 1935

INSTRUCTOR—LABORATORY SCHOOLS

HERBERT WEAVER

A.B., Birmingham-Southern, 1926; M.A., Birmingham-
Southern, 1935; Ph.D., Vanderbilt, 1940

SOCIAL SCIENCES

MARIE WOOD

A.B., Georgia State College for Women, 1930; M.A., Co-
lumbia, 1932

INSTRUCTOR—LABORATORY SCHOOLS





REFLECTIONS

Ready to march . . . "All-Smiles" Howell;
 why? . . . Homecoming at T. C. . . . Town?
 . . . Sorority girls staged flag-rush . . . Now
 watch the birdie, girls.





ON THE CAMPUS

And they are probably still there . . . and so we knew it was Spring . . . So! this is T. C.! Well, well, well . . . posed picture . . . revenge is sweet . . . the campus after classes.





[The text in this block is extremely faint and illegible, appearing as a dense block of small characters.]

C L



A S S E S

SENIORS



Left to Right: Toney, Blitch, Reppard, Bacon, Stanfield, Deal.

OFFICERS

OFFICERS

CHARLES STANFIELD	President
DORIS TONEY	Vice-President
FRANCES DEAL	Secretary
CHESS FAIRCLOTH	Treasurer

STUDENT COUNCIL REPRESENTATIVES

OLIVE REPPARD	HOMER BLITCH
T. A. BACON	

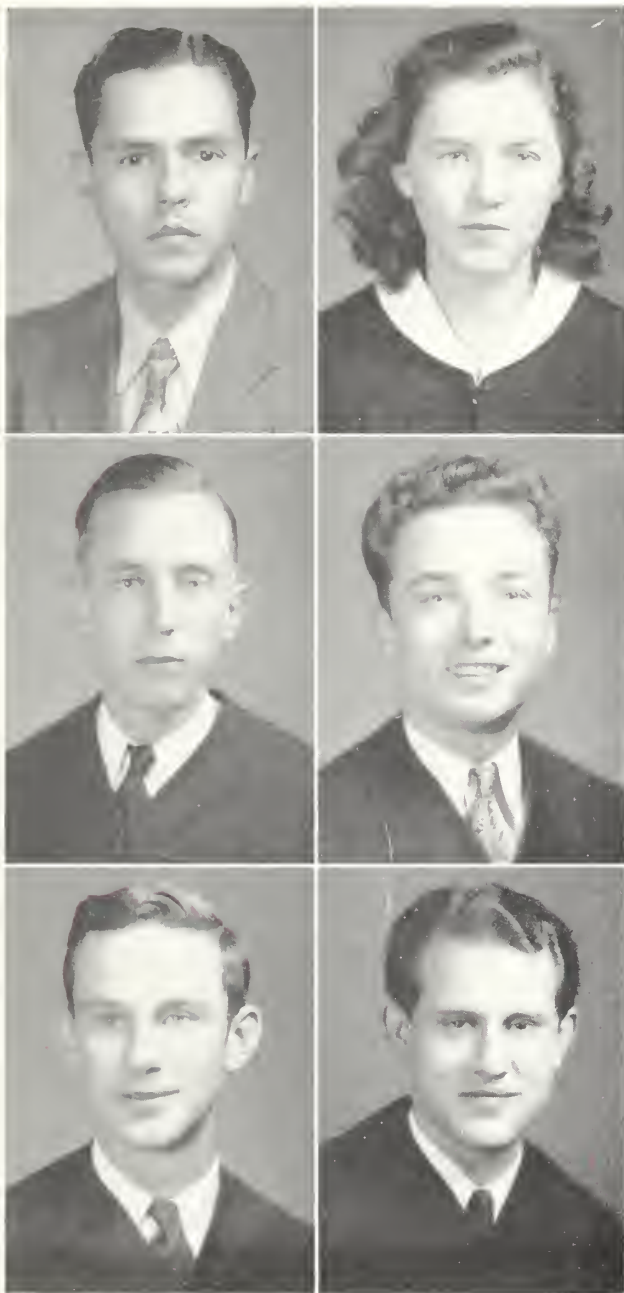
SPONSORS

MISS MAMIE JONES	DR. C. M. DESTLER
------------------	-------------------



JONES

DESTLER



ERNEST AGUIRRE
Cienfuegos, Cuba
SOCIAL STUDIES

FAY ALDERMAN
Americus, Ga.
ELEMENTARY EDUCATION

Transfer, Georgia Southwestern College; Y. W. C. A. 3, 4; Cabinet, 4; Vesper Choir, 3, 4; "X" Club, 3, President, 4; Band, 3; College Chorus, 4; President Lewis Hall House Council, 4.

JOHN BEN AYERS
Canon, Ga.
INDUSTRIAL ARTS

Y. M. C. A., 1, 2, 3, 4, Vice-President, 4; Business Manager, **George-Anne**, 3, 4; Photography Club, 1; Vesper Choir, 3, 4; Industrial Arts Club, 4, Vice-President, 4.

TROY ALVIN BACON, JR.
Manassas, Ga.
GENERAL SCIENCE

Delta Sigma; Treasurer, Freshman Class; Symphony Orchestra, 1; Y. M. C. A., 1, 2, 3, 4; Cabinet, 3, 4; **George-Anne** Staff, 2, 4; Bachelors Club, 3, 4; Boxing Team, 3; Bird Club, Secretary, 4; Mu Sigma, 4; Student Council, 4; President, Sanford Hall House Council, 4.

CARROLL BEASLEY
Statesboro, Ga.
MUSIC

Band, 1, 2, 3, 4, Vice-President, 3.

ROBERT LYNN BELL*
Trion, Ga.
HISTORY

Football, 2, 3, 4.

ELLIOTT BOSWELL
Crawfordville, Ga.
ENGLISH

College Chorus, 1, 2, 3, 4, Vice-President, 2; Board of Directors, 4; Music Club, 1, 2; Mu Sigma, 3, 4; Vice-President, 3, President, 4; Vesper Choir, 1, 2, 3, 4, President, 3; English Club, 3, 4, President, 4; Y. M. C. A., 1, 2, 3, 4; I. R. C., 4; **George-Anne** Staff, 4.

CLASS »

*No Picture.

JOY BOWDEN

Columbus, Ga.

ELEMENTARY EDUCATION

Sigma Gamma; College Chorus, 3, 4; Band, 4; **George-Anne** Staff, 4; Bugger Dagger Sponsor, 4; Y. W. C. A., 3, 4; Fine Arts Club, 4; Transfer, Georgia Southwestern College.

JOHN PIERCE BLANCHARD

Appling, Ga.

GENERAL SCIENCE

Delta Sigma, Chaplain, 4; Y. M. C. A., 2, 3, 4; Bird Club, 2, 3, 4, President, 4; Science Seminar, 2, 3, 4; Cheer Leader, 3, 4, Chairman, 4.

BILLIE DURDEN BLAND*

Statesboro, Ga.

ELEMENTARY EDUCATION

Transfer, Georgia State College for Women.

VIRGINIA COURTENAY BRADLEY*

Hagan, Ga.

ENGLISH

Music Club, 1; Transfer, Wesleyan College.

FRANCES BREEN

Jesup, Ga.

HOME ECONOMICS

Epicurean, Treasurer, 3, 4; May Court, 2, 3, 4; W. A. A. Council, 2, 3, 4; Vice-President, Junior Class; House Council, 3, 4, Secretary-Treasurer, 4; Cheer Leader, 1, 2, 4; Beauty Section, 2, 3.

S. NEWTON BROCK, JR.

Carrollton, Ga.

HISTORY

Y. M. C. A.; Industrial Arts Club, 4; Fine Arts Club, 4; English Club, 4; Transfer, Piedmont College.

MIRIAM BRINSON

Millen, Ga.

ELEMENTARY EDUCATION

Epicurean; The Masquers, 4; **George-Anne** Staff, 4; House Council, 4; May Court, 4; Transfer, Georgia State College for Women.

HELEN BRUCE

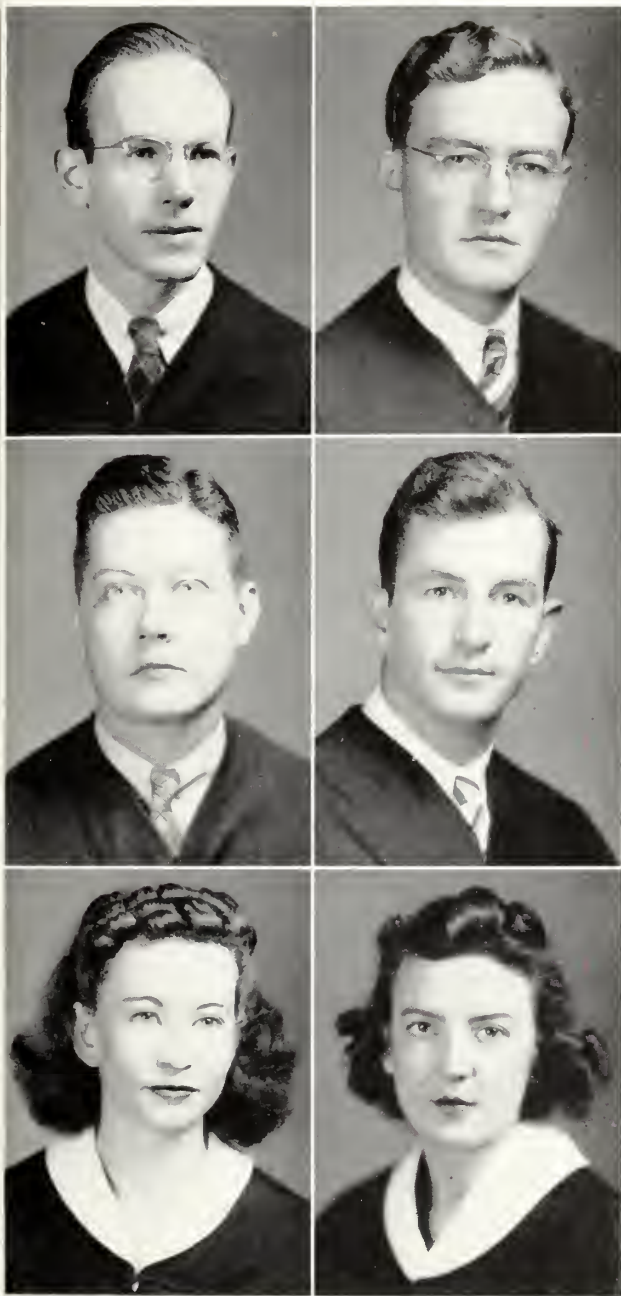
Blackshear, Ga.

ELEMENTARY EDUCATION



*No Picture.

S E N I



DANA A. BUTLER

Fort Valley, Ga.
SOCIAL SCIENCE
Bugger Dagger.

EARL BYRD

Patterson, Ga.
SOCIAL SCIENCE

Secretary, Freshman Class; Y. M. C. A., 1, 2, 3; I. R. C., 3, 4; House Council, 2, 3, 4; English Club, 3; Vesper Choir, 2, 3, 4.

ARLAND COOPER

Myrtle Beach, S. C.
ENGLISH
English Club, 4.

WILLIAM REID COX

Dawson, Ga.
HISTORY

Bachelors Club; Football, 3, 4; Y. M. C. A., 3, 4; Transfer, Middle Georgia College.

EDITH DAVIS

Patterson, Ga.
SOCIAL SCIENCE

Y. W. C. A., 1, 2, 3, 4, Cabinet 4; Vesper Choir, 2, 3; House Council, 1, 4, President, West Hall, 4; I. R. C., 3, 4; The Masquers, 4; Bird Club, 3; Home Economics Club, 4.

FRANCES DEAL

Statesboro, Ga.
ENGLISH

Epicurean; May Court, 1, 2; Band, 1; College Chorus 2, 4; **George-Anne** Staff, 2, 3, 4; I. R. C., 2; House Council, 3, 4; English Club, 3, 4, Vice-President, 4; Vice-President, Junior Class; Secretary, Senior Class.

O R S

T. C. DENMARK, JR.*

Claxton, Ga.
SOCIAL SCIENCE

BELVA DICKSON*

Hephzibah, Ga.
ENGLISH
The Masquers 3.

ALTON ELLIS

Griffin, Ga.
ENGLISH

Bachelors Club, President 4; **George-Anne** Staff 2, 3,
Editor 3; Vice-President Y. M. C. A. 3.

REESE ELLISON

Americus, Ga.
GENERAL SCIENCE

Delta Sigma; Football 3, 4; Basketball 3; Transfer,
Georgia Southwestern College.

LAWRENCE ENLOW

Atlanta, Ga.
HISTORY
Basketball 1, 2, 3, 4.

CHESS B. FAIRCLOTH

Statesboro, Ga.
GENERAL SCIENCE

Band 1, 2, 3, 4; Bird Club, Vice-President 2, 4; Treas-
urer Senior Class; **George-Anne** Staff 4.

MILTON ALTON FINDLEY

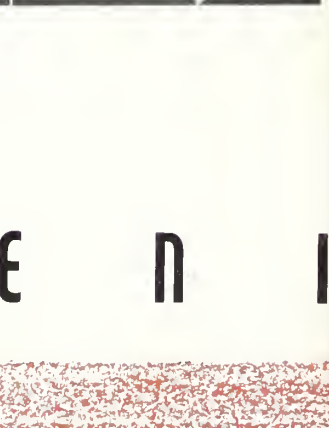
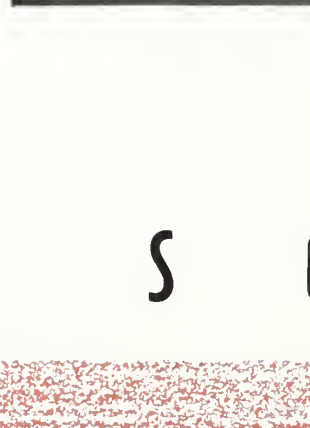
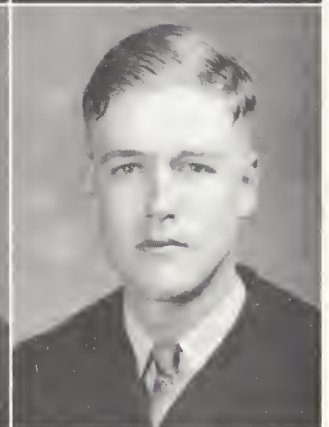
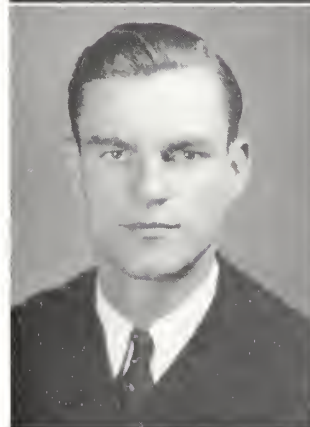
Lyons, Ga.
SOCIAL SCIENCE

Bugger-Dagger, Secretary 3, President 4; I. R. C. 2, 3;
Honored in Dramatics.

CATHERINE MARGARET GAINES

Birmingham, Ala.
PUBLIC SCHOOL MUSIC

Dux Domina, Treasurer 2, President 3, 4; College Chorus
Pianist 1, 2, 3, 4, Board of Directors 3, 4, Chairman 4;
W. A. A. Council 2, 3, 4, Vice-President 4; Honors' Day
2, 3; Secretary Sophomore Class; Music Club 2; Mu
Sigma 3, 4; Dance Club 2, 3; House Council 3, 4, Sec-
retary-Treasurer 3, Vice-President 4; Pan-Hellenic Coun-
cil 3, 4, Treasurer 3, President 4; Y. W. C. A. Cabinet
3, 4, Treasurer 4; Delta Sigma Fraternity Sponsor 3,
4; REFLECTOR Staff 3, 4 Editor, 4; Fine Arts Club 4;
Secretary Student Council 4; Maid of Honor, May
Court 4; Who's Who Among Students in American
Universities and Colleges 4.



S E N I



IRMA CARLTON GLISSON

Vidalia, Ga.

ELEMENTARY EDUCATION

Y. W. C. A., 3, 4; The Masquers, 4; House Council, 4; Transfer, Bessie Tift College.

JULIA EMILY GOFF

Statesboro, Ga.

SOCIAL SCIENCE

I. R. C., 3, 4; Secretary-Treasurer, 4; English Club, 4; Y. W. C. A., 3, 4; College Chorus, 4; Vesper Choir, 4.

D. B. GOULD

Statesboro, Ga.

GENERAL SCIENCE

Honors' Day, 3.

GLYNNIE GRIFFIN*

Newton, Ga.

ELEMENTARY EDUCATION

MARIE MARZELLE HAMRICK

Canton, Ga.

ENGLISH

The Masquers, 4; English Club, 3, 4; Secretary, 4; Y. W. C. A., 3, 4; Transfer, Reinhardt Junior College.

BURDELLE HARRISON

Halcyondale, Ga.

ELEMENTARY EDUCATION

College Chorus, 1, 2, 3, 4; Board of Directors, 4; Vesper Choir, 1, 2, 3, 4; Director, 4; Y. W. C. A. Cabinet, 3, 4; Mu Sigma, 4; "X" Club, 3, 4; Vice-President, 4; House Council, 1; Student Council, 3.

ROGER JOSEPH HOLLAND

Statesboro, Ga.

GENERAL SCIENCE

Iota Pi Nu; Mu Sigma, 4; Band, 1, 2, 3, 4; College Chorus, 1, 4; Symphony Orchestra, 1; Dance Orchestra, 1, 2.

O R S

*No Picture.

FRANCES LOUISE HUGHES

Brooklet, Ga.

ELEMENTARY EDUCATION

Epicurean, President 4; Freshman Commission, 2; Y. W. C. A., 1, 2, 3, 4, Cabinet, 3, 4, Vice-President, 3; W. A. A. Council, 3, 4, President, 4; Vesper Choir, 2, 3, Vice-President, 3, College Chorus, 2, 3, 4, Board of Directors, 3, 4; Dance Club, 2, 3, President, 3; Home Economics Club, 2, 3; **George-Anne** Staff, 2; Music Club, 1, 2; Mu Sigma, 3, 4, Secretary, 3; Band, 1; Pan-Hellenic Council, 4; Fine Arts Club, 4, Treasurer, 4; May Court, 4.



JOHN EVERETT KING

Hazlehurst, Ga.

GENERAL SCIENCE

Inta Pi Nu, President 4; **REFLECTOR** Staff, 4; Transfer, Brewton Parker.

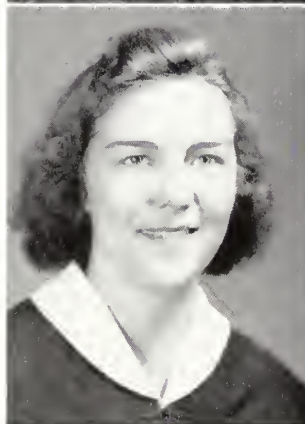


HORACE McDOUGALD

Statesboro, Ga.

ENGLISH

Band, 1; Music Club, 1, 2; English Club, 3.



CORDELIA ELIZABETH McLEMORE

Statesboro, Ga.

MUSIC

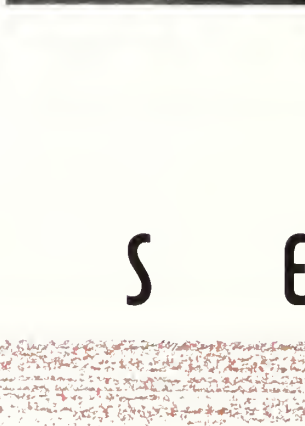
College Chorus, 1, 2, 3, 4, Board of Directors, 3; Lambda Theta Chi, Vice-President, 4; Pan-Hellenic Council, 4, Scribe, 4; Music Club, 1, 2; Mu Sigma, 3, 4; Fine Arts Club, 4; **REFLECTOR** Staff, 4.

ELIZABETH McNALLY

Chickamauga, Ga.

ENGLISH

English Club, 3, 4; Y. W. C. A. Cabinet, 4; W. A. A. Council, 4, Secretary-Treasurer, 4; House Council, 4, Vice-President, 4; Transfer, Young Harris College.



NINA MOORE

Statesboro, Ga.

HOME ECONOMICS

Home Economics Club, 2, 3, 4; Science Club, 2, 3; Mathematics Club, 1, 2; The Masquers, 4.

S E N I



RUTH EVANS MURPHY

Hephzibah, Ga.

ELEMENTARY EDUCATION

Sigma Gamma; "X" Club; Y. W. C. A.; Transfer, Augusta Junior College.

EDDIE NAJJAR

Cedartown, Ga.

ENGLISH

The Masquers, President, 2, 3, 4; Key in Dramatics, 2; English Club, Vice-President, 3, Treasurer 4; Bachelors Club; Associate Editor, REFLECTOR, 4; Honors' Day, 3; Who's Who Among Students in American Colleges and Universities, 4.

ELLA COOK NEASE

Lumber City, Ga.

MUSIC

Mu Sigma, 4; English Club, 4; College Chorus, 4; Band, 4; Transfer, Young Harris College.

GESMON NEVILLE

Statesboro, Ga.

INDUSTRIAL ARTS

Band, 1, 2, 3, 4; Orchestra, 1; George-Anne Staff, 2, 3; REFLECTOR Staff, 3, 4, Business Manager, 4; Art Editor, 3; Industrial Arts Club, 4, Publicity Chairman; C. A. A., 3; Art Club, 4; Symphony Orchestra, 1, 2, President; Dance Orchestra, 1, 2, 3, Manager; G. T. C. Reporter, Savannah Evening Press, 2, 3, 4; Forensic Council, Secretary, 4; Y. M. C. A.; First Award, Library Bookplate Design, 2; Bachelor, Bugger-Dagger.

GEORGE GIBBS PAFFORD

Homerville, Ga.

INDUSTRIAL ARTS

Industrial Arts Club, 3, 4; Basketball, 3, 4; Football, 3, 4; Y. M. C. A. Cabinet 4; House Council, 4; Vesper Choir; Transfer, North Georgia College.

GEORGE PARKER

Woodcliff, Ga.

GENERAL SCIENCE

Science Seminar, 3, 4, Co-Chairman, 4; Y. M. C. A.; Bird Club, 3, 4, Program Chairman, 4; Transfer, Emory University.

O R S

MARY PAULK

Fitzgerald, Ga.

MUSIC

College Chorus, 3, 4; Bird Club, 4; Mu Sigma, 3, 4; Vesper Choir, 3, 4; Pianist, 4; Y. W. C. A., 3; Transfer, Georgia State Woman's College.

SARA PERKINS

Stonewell, Ga.

ELEMENTARY EDUCATION

I. R. C.; Home Economics Club; Fine Arts Club; Y. W. C. A.; Transfer, University of Georgia Evening School.

EMOLYN RAINERY

Columbus, Ga.

HOME ECONOMICS

Lamba Theta Chi, Chaplain, 3, 4; House Council, 1, 2, 4; Secretary, 2; President, East Hall, 4; W. A. A. Council, 2, 3, 4; Secretary-Treasurer, 3; Publicity, 4; Secretary-Treasurer, Junior Class; The Masquers, 1, 2, 3; Treasurer, 3; Y. W. C. A. Cabinet, 2, 3, 4; President, 4; Honors' Day, 3; Who's Who Among Students in American Universities and Colleges, 4.

BILL TOM REEVES

Newton, Ga.

SOCIAL SCIENCE

OLIVE LOUISE REPPARD

Fitzgerald, Ga.

SOCIAL SCIENCE

College Chorus, 2; Sigma Gamma, President, 4; Pan-Hellenic Council, 4; President, East Hall House Council, 3; I. R. C., 3, 4; The Masquers, 3; Student Council, 4.

ANNA ROGERS

Peidsville, Ga.

ENGLISH

College Chorus, 1, 2, 3; Alpha Beta Chi, Treasurer, 4; English Club, 3, 4; Transfer, Georgia State College for Women.



S E N I



ELBERT C. SANDERS

Pembroke, Ga.

SOCIAL SCIENCE

Associate Editor, *George-Anne*, 3; Editor, 4; I. R. C., 2, 3, 4; Honors' Day, 3; Who's Who Among Students in American Universities and Colleges, 4.

FRANCES SEWARD

Savannah, Ga.

ELEMENTARY EDUCATION

Transfer, Wesleyan.

CHARLES M. STANFIELD, JR.

Glennville, Ga.

HISTORY

Bachelors Club Vice-President, 4; Y. M. C. A., 1, 2, 3, 4; President, 4; I. R. C., 3, 4; President, 4; President, Senior Class; Bugger-Dagger, President, 3; Student Council, 4; Science Seminar, 1, 2; *George-Anne* Staff, 4; "T" Book Committee, 4; Sanford Hall House Council, 3, 4; Honors' Day, 2, 3; Who's Who Among Students in American Universities and Colleges, 4.

DORIS TONEY

Americus, Ga.

SOCIAL SCIENCE

I. R. C., 3, 4; Vice-President, 4; College Chorus, 3, 4; Board of Directors, 4; Mu Sigma, 3, 4; Sigma Gamma; "X" Club; Vice-President, Senior Class; Transfer, Georgia Southwestern College.

BEN TILLMAN

Glennville, Ga.

HISTORY

Boxing, 3, 4.

THOMAS EDWARD VANDIVER

Summit, Ga.

INDUSTRIAL ARTS

Delta Sigma, President, 4; Bachelors Club, President, 4; Student Council, 1, 2, 3; Freshman Commission; Football, 1, 2, 3, 4; Honored in Dramatics, 1; REFLECTOR Staff, 4.

JEANETTE WILLIAMS

Eatonton, Ga.

ENGLISH

Alpha Beta Chi; English Club, 4; Transfer, South Georgia College.

HERMAN WRINKLE*

Dalton, Ga.

Iota Pi Nu, Secretary, 3; Vice-President, 4; Bachelors Club, Secretary, 3; Y. M. C. A., 3, 4; Cabinet, 3; English Club, 3; Student Council, 3; Dining Hall Commission, 1, 2, 3.

*No Picture.

O R S

JUNIOR CLASS



Front Row: Jones, Hartley, Bowman. . . . Back Row: Dunn, Morgan.

OFFICERS



BRUCE

PARKER

OFFICERS

DAVID BOWMAN	President
JACK MORGAN	Vice-President
AZILE HARTLEY	Secretary-Treasurer

STUDENT COUNCIL REPRESENTATIVES

EULA BETH JONES	JOHN DUNN
-----------------	-----------

SPONSORS

MISS HELEN BRUCE	MR. J. MALCOLM PARKER
------------------	-----------------------



First Row: Akins, Anglin, Blitch, Bowen, Bowman, Brannen. . . . Second Row: Brewton, Brinson, I. Bunce, J. Bunce, Butler.

W. B. AKINS Register, Ga.

MORGAN LEE BRANNEN Register, Ga.

THERON ANGLIN Wadley, Ga.
Bugger-Dagger

LOIS BREWTON Groveland, Ga.

BETTY BAIRD Statesboro, Ga.

LUCY BRINSON Woodcliff, Ga.

DORSEY BLALOCK Waycross, Ga.

ISAAC BUNCE Statesboro, Ga.

HOMER BLITCH Statesboro, Ga.
Iota Pi Nu

JIMMIE BUNCE Statesboro, Ga.

SARA REID BOWEN Register, Ga.
Lambda Theta Chi

MRS. DANA A. BUTLER Fort Valley, Ga.

DAVID BOWMAN Bronwood, Ga.
Iota Pi Nu



First Row: Byington, Cato, Cave, B. Christie, R. Christie, Cobb. . . . Second Row: Cone, Cook, Dial, Dorminy, Dunn, Eason.

WILLIAM BYINGTON Augusta, Ga.

MARIETA COOK Savannah, Ga.

ELIZABETH CATO Ellabell, Ga.

NELLIE KATE DAVIS Cuthbert, Ga.

O'NEAL CAVE Augusta, Ga.
Iota Pi Nu

SARA ELIZABETH DIAL Walnut Grove, Ga.

BEN CHRISTIE Parrott, Ga.
Delta Sigma

OPHELIA DORMINY Fitzgerald, Ga.

REN CHRISTIE Parrott, Ga.
Delta Sigma

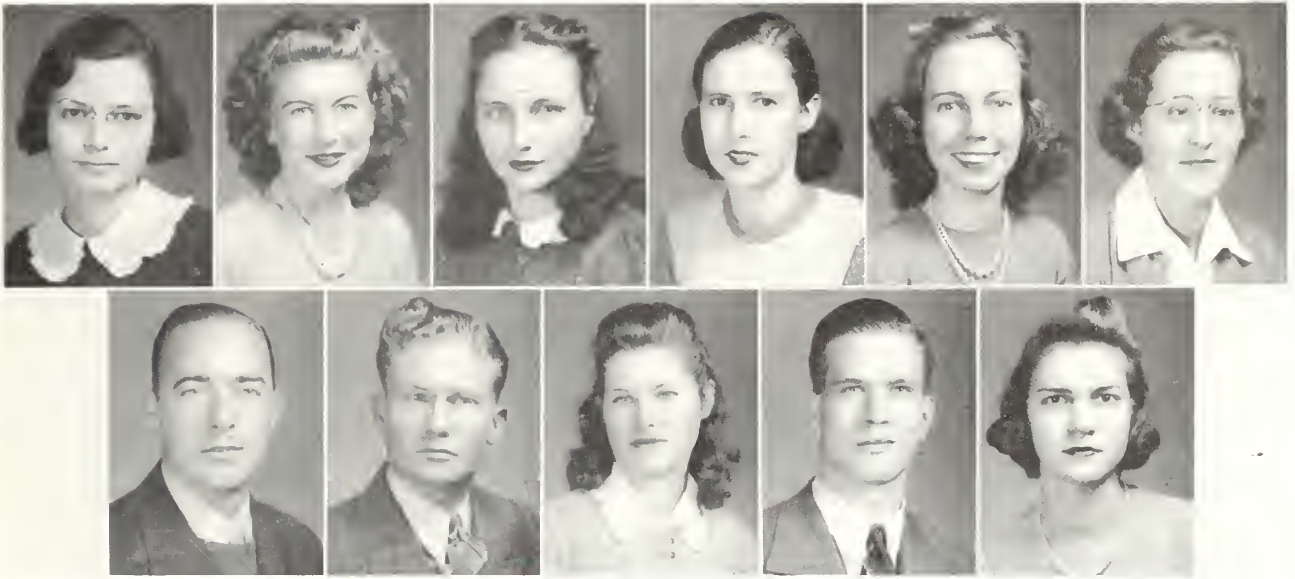
MARJORIE COBB Bainbridge, Ga.

JOHN DUNN Devereaux, Ga.
Bugger-Dagger

RUTH CONE Brooklet, Ga.
"X"

VIRGINIA EASON Reidsville, Ga.
Alpha Beta Chi

J U N



First Row: English, Everett, Finley, Floyd, Forehand, L. Gay. . . . Second Row: Grahl, Griner, B. Groover, Hallman, Harrison.

MERLE ENGLISH Augusta, Ga.

GRACE EVERETT Oliver, Ga.

MADelyn FINLEY Hazlehurst, Ga.

MARY ISABELLE FLOYD Willacoochee, Ga.

SARA FOREHAND Sylvester, Ga.

DOY GAY Statesboro, Ga.

LETA GAY Statesboro, Ga.

JOHN GRAHL Macon, Ga.
Delta Sigma

ROBERT GRINER Sylvania, Ga.

BESSIE GROOVER Statesboro, Ga.

FRANCIS GROOVER Stilson, Ga.

RUTHIE LEE GROOVER Statesboro, Ga.

WYLLIS HALLMAN Valdosta, Ga.

FRANCES HARRISON West Point, Ga.
Lambda Theta Chi

*No Picture.



First Row: Hartley, Hatton, Heidt, Henderson, Hicks, Hulbert. . . . Second Row: Hurst, Ingram, Jenkins, Jones, Kammerer, Keefe.

AZILE HARTLEY Miami, Fla.
Sigma Gamma; "X".

JOE HURST Egypt, Ga.
Bugger-Dagger

MILDRED HATTON Odum, Ga.

JOE INGRAM Nelson, Ga.
Iota Pi Nu

LORENE HEIDT Marlow, Ga.
Sigma Gamma; "X".

TOM JENKINS Edison, Ga.
Iota Pi Nu; Bugger-Dagger.

W. C. HENDERSON Thomasville, Ga.

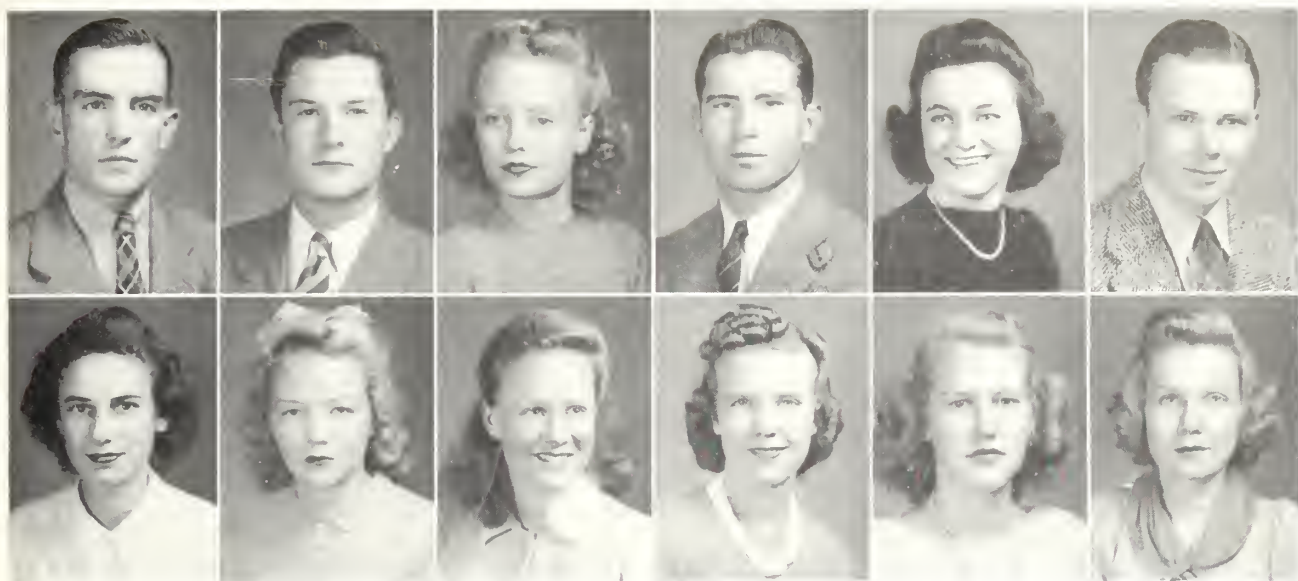
EULA BETH JONES Marshallville, Ga.
Lambda Theta Chi

REBECCA HICKS Decatur, Ga.
Sigma Gamma

RUTH KAMMERER Brunswick, Ga.
Sigma Gamma; "X".

EDWARD HULBERT Savannah, Ga.

GERALDINE KEEFE Jamestown, Ga.
Delta Lambda Delta



First Row: Kennon, Kemp, Kicklighter, Kneece, Lane, Martin. . . . Second Row: Matthews, Mathis, McCarty, McCollum, McDaniel, McGehee.

WARNER L. KENNON Statesboro, Ga.

MARGUERITE MATTHEWS Statesboro, Ga.
Epicurean

PILCHER KEMP Statesboro, Ga.

JANE MATHIS Asburn, Ga.

DEALVA KICKLIGHTER Glennville, Ga.

MARY McCARTY Attapulcus, Ga.

CHARLEY KNEECE Athens, Ga.
Bugger-Dagger

NELLORENE McCOLLUM Broxton, Ga.

ALICE JO LANE Statesboro, Ga.
Sigma Gamma

GENEVA McDANIEL Duluth, Ga.

WILLIAM MARTIN Edison, Ga.

DORIS McGEHEE Waverly Hall, Ga.



First Row: McKinnon, Mincey, Mixon, Morgan, Muirhead, Olliff. . . . Second Row: Olmstead, Perry, Powell, Reynolds, Robinson, Rooks.

RAMON JUDSON McKINNON Adel, Ga.

CLARE MINCEY Ogeechee, Ga.

HAZEL MIXON Patterson, Ga.

JACK MORGAN Abbeville, Ga.
Iota Pi Nu

MARY MUIRHEAD Columbus, Ga.

SUSIE BELLE NeSMITH Oliver, Ga.

FRANK OLLIFF Statesboro, Ga.
Delta Sigma

JOHN OLMSTEAD Hinesville, Ga.
Iota Pi Nu

MARY LILLIAN PERRY Nashville, Ga.

MARY POWELL Swainsboro, Ga.
Dux Domina

DEWEY REYNOLDS Arabia, Ga.

AUGUSTUS RIEDEL Savannah, Ga.

THOMAS ROBINSON Sardis, Ga.

REGINALD ROOKS Arlington, Ga.

J U N



First Row: Sheffield, Shivers, Simpson, Smith, B. Sneed, F. Sneed. . . . Second Row: Strange, Taylor, Tillman, Traynham, Upchurch, Vincent.

RACHEL SHEFFIELD Colquitt, Ga.

Z. L. STRANGE Statesboro, Ga.

MERVIN SHIVERS Americus, Ga.

EUNICE TAYLOR Lyons, Ga.

JANE SIMPSON Millen, Ga.
Epicurean

HAROLD TILLMAN Glennville, Ga.

ELECTRA SMITH Sycamore, Ga.

ELLA SUE TRAYNHAM Broxton, Ga.
Lambda Theta Chi

WILLIAM O. SNEED Statesboro, Ga.

SARA HELEN UPCHURCH Stilson, Ga.

FRUSANNA SNEED Statesboro, Ga.

ANNIE RAY VINCENT Whigham, Ga.

I O R S



First Row: Warren, Waters, Weatherford, Williams. . . . Second Row: Wilson, Wingate, Zetterower.

CLAY WALLER Tennille, Ga.

BETTIE WILLIAMS Waycross, Ga.

PATON WARREN Stillmore, Ga.

RUFUS WILSON Statesboro, Ga.

NELL WATERS Hilltonia, Ga.

BILLY WINGATE Pelham, Ga.

EUGENE WEATHERFORD Graymont, Ga.
Iota Pi Nu

J. W. ZETTEROWER Dublin, Ga.
Delta Sigma

J U N I O R S

PEOPLE

The Sweetheart of Sanford Hall. . . The people's favorite drum majorette. . . That's Coach behind the bay window; the little boy is Dean Russell. . . Pledges revert back . . . Local girl makes good: Miriam Brinson is Queen of the Savannah Paper Festival. . . Totem pole, 1941 style. . . Ooops! there's that man again. . . Dell in characteristic pose. . . She's afraid to go on in; she hates strange places. . . That Mamie should stoop to this. . . Just because you like to look at her.



SOPHOMORE CLASS



Front Row: Watson, McMillan, Robertson. . . . Back Row: Curry, Olliff.

OFFICERS



JOHNSON

WINBURN

OFFICERS

HARRY ROBERTSON	President
DIGHT OLLIFF	Vice-President
ROGER McMILLAN	Secretary
THOMAS CURRY	Treasurer

STUDENT COUNCIL REPRESENTATIVE

DAVID WATSON

SPONSORS

MISS SOPHIE JOHNSON MR. "BOB" WINBURN



First Row: Adams, Ahl, Alderman, Alford, Altman, A. Anderson, D. Anderson. . . . Second Row: E. Anderson, Aycock, Arnette, Bacon, Baskin, G. Beasley, Beaty. . . . Third Row: Boatwright, Booth, Borders, Boyd, B. Brinson, E. Brinson, Browder.

CLAUDE ADAMS Race Pond, Ga.
Delta Sigma

CALTON AHL Alma, Ga.

ALLIE JEAN ALDERMAN Portal, Ga.

CHARLES ALFORD Fort Valley, Ga.
Bugger-Dagger

ANGIE ALTMAN Sylvania, Ga.

ALICE ANDERSON Register, Ga.

DOROTHY ANDERSON Stillmore, Ga.
Lambda Theta Chi

EMERSON ANDERSON Statesboro, Ga.
Delta Sigma

MILBURNE AYCOCK Millen, Ga.

MAGGIE ARNETTE Sylvania, Ga.

RALPH BACON Pembroke, Ga.
Delta Sigma

HELEN BASKIN Ray City, Ga.

FRED BEASLEY Statesboro, Ga.

GERALDINE BEASLEY Claxton, Ga.
Alpha Beta Chi

LOUISE BEATY Willie, Ga.

MAURICE BOATWRIGHT Swainsboro, Ga.

STANLEY BOOTH Madison, Ga.
Bugger-Dagger

MARY BORDERS Thompson, Ga.

JULIA BOYD Stapleton, Ga.

BOBBY BRINSON Brooklet, Ga.

EDITH BRINSON Woodcliff, Ga.

JEANE BROWDER Odum, Ga.



First Row: Burch, Burpitt, Cannon, Chambless, Chisolm, Clifton, C. Coleman. . . . Second Row: G. Coleman, Colson, N. Corbin, S. Corbin, Creech, Cromley, Culbreth. . . . Third Row: Culpepper, Cummings, T. Curry, Darley, Davis, Durrence, Edenfield.

MARY EVA BURCH Alma, Ga.
 JAMES BURPITT Ellabell, Ga.
 LOUISE CANNON Walnut Grove, Ga.
 DAN CHAMBLESS Dawson, Ga.
 ROBERT CHISOLM Barnwell, S. C.
 LUNIE MAE CLIFTON Statesboro, Ga.
 CHRISTINE COLEMAN Claxton, Ga.
 G. C. COLEMAN Statesboro, Ga.
 Delta Sigma
 CATHERINE COLSON Hinesville, Ga.
 NORMA CORBIN Oak Park, Ga.
 SHIRLEY CORBIN Oak Park, Ga.
 IDA CREECH Claxton, Ga.

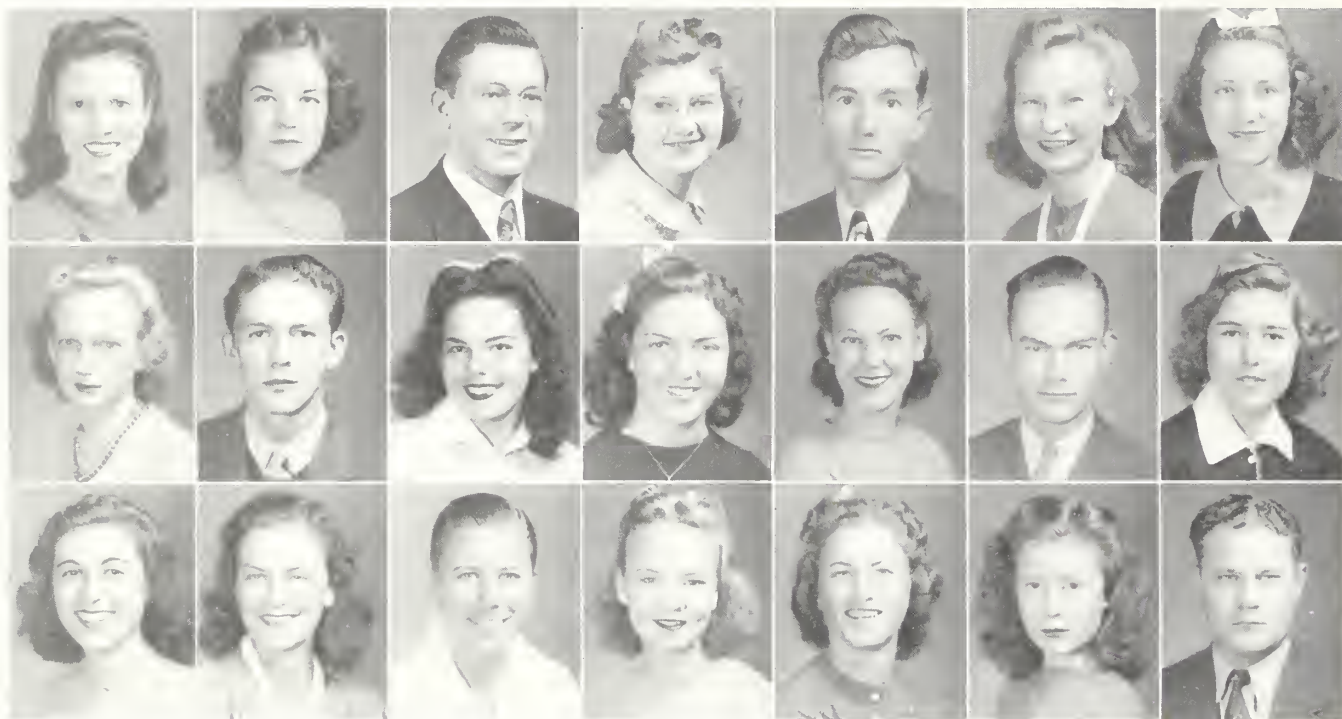
EMILY CROMLEY Brooklet, Ga.
 Lambda Theta Chi
 WAYNE CULBRETH Edison, Ga.
 Iota Pi Nu
 LEON CULPEPPER Cordele, Ga.
 Iota Pi Nu
 BETTIE LOU CUMMINGS Guyton, Ga.
 KATE CURRY Swainsboro, Ga.
 THOMAS CURRY Dublin, Ga.
 Delta Sigma
 EVELYN DARLEY Statesboro, Ga.
 INMAN DAVIS Swainsboro, Ga.
 MARY ADELE DRENON Jesup, Ga.
 Delta Lambda Delta
 MARILYN DURRENCE Glennville, Ga.
 PALMER EDENFIELD Wadley, Ga.



First Row: Elmore, Farmer, Flanders, Foster, Foy, Freeman, Fries . . . Second Row: Gay, A. Griffin, M. Griffin, Groover, Gunby, Hall, Hardwick. . . Third Row: Harrell, Harris, Harrison, Hatcher, Hendricks, Herrington, Hinely.

MIRIAM ELMORE Savannah, Ga.
 JOE FARMER Augusta, Ga.
 NELLE FLANDERS Rockledge, Ga.
 CAROLYN FOSTER Edison, Ga.
 Delta Lambda Delta
 MAXANN FOY Statesboro, Ga.
 Dux Domina
 EMMIE FREEMAN Sylvania, Ga.
 MARY FRIES Millen, Ga.
 Delta Lambda Delta
 WUDIE GAY Rocky Ford, Ga.
 ABBIE GRIFFIN Leary, Ga.
 MAURICE GRIFFIN Dearing, Ga.
 EDWIN GROOVER Statesboro, Ga.
 Delta Sigma

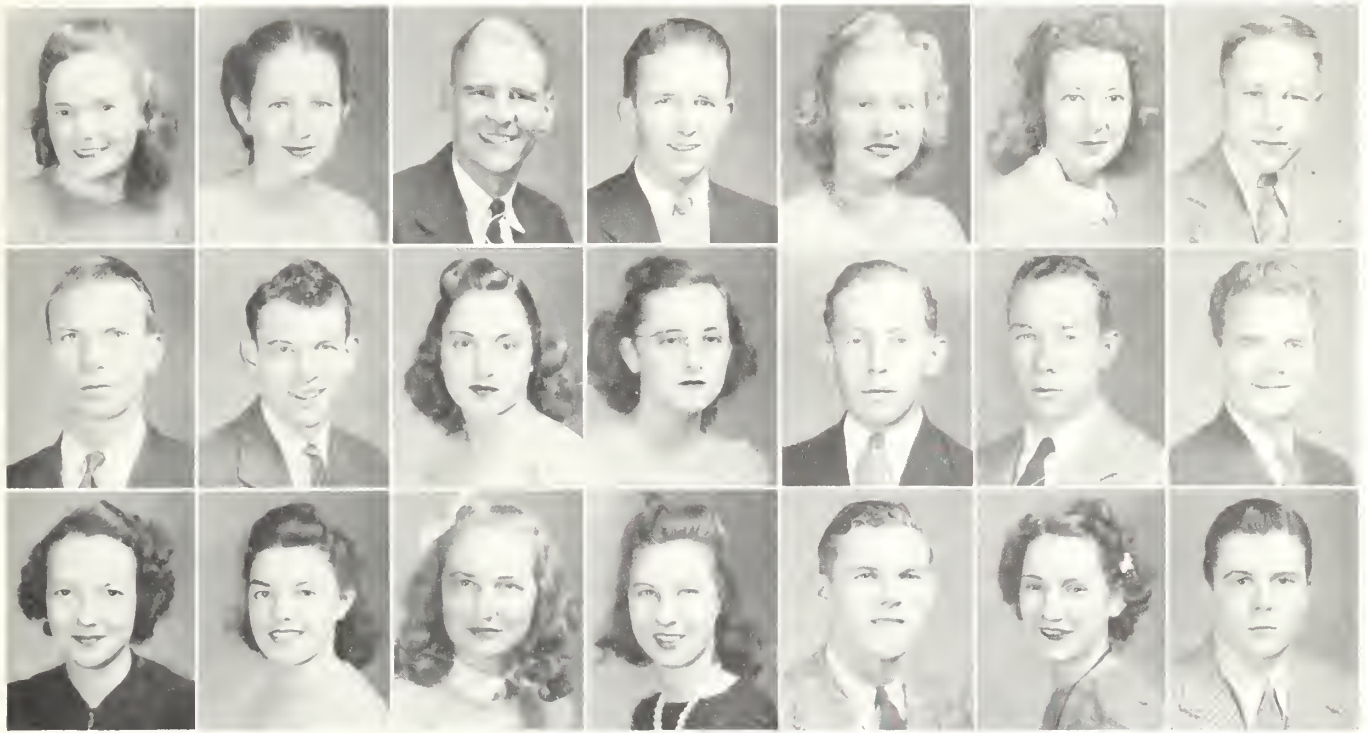
KARIS GUNBY Hortense, Ga.
 JAMES HALL Norman Park, Ga.
 Delta Sigma
 HELEN HARDWICK Covington, Ga.
 WINIFRED HARRELL White Oak, Ga.
 ALICE HARRIS Pelham, Ga.
 Sigma Gamma
 JOSEPH HARRISON Brooklet, Ga.
 DANIEL HART Statesboro, Ga.
 JACK HATCHER Harlem, Ga.
 KATHLEEN HENDRICKS Statesboro, Ga.
 HAROLD HERRINGTON Swainsboro, Ga.
 WILLIE HUGH HINELY Springfield, Ga.



First Row: Hodges, Howell, Hutchins, Jackson, J. Jones, J. Jones, Jory. . . . Second Row: Joyner, Key, Knowles, Lake, Lamb, Lanier, Lawrence. . . . Third Row: Mallard, Mann, McDaniel, McMillan, Miller, Minchew, Mize.

ALICE HODGES Statesboro, Ga.
 Lambda Theta Chi
 SARA HOWELL Statesboro, Ga.
 Sigma Gamma
 CARL HUTCHINS Sparta, Ga.
 Bugger-Dagger
 EDNA JACKSON Stapleton, Ga.
 JAMES ALLEN JONES Statesboro, Ga.
 JOYCE JONES Louisville, Ga.
 MARY ELIZABETH JORY Brunswick, Ga.
 LAMBUTH KEY Statesboro, Ga.
 KATHRYN JOYNER Screven, Ga.
 Delta Lambda Delta
 BETTY KNOWLES Asburn, Ga.
 MARY GRACE LAKE Dublin, Ga.

MADELYN LAMB Jesup, Ga.
 Delta Lambda Delta
 DENVER LANIER Rocky Ford, Ga.
 BERNICE LAWRENCE Molena, Ga.
 ROBBIE LEE MALLARD Cobbtown, Ga.
 ABBIE MANN Thomasville, Ga.
 "X" Club
 NELLIE McDANIEL Albany, Ga.
 VERNON McKEE Portal, Ga.
 ROGER McMILLAN Fitzgerald, Ga.
 Sigma Gamma
 LOTTIE MILLER Statesboro, Ga.
 LUCILE MINCHEW Waycross, Ga.
 Alpha Beta Chi
 RALPH MIZE Cave Spring, Ga.



First Row: Mobley, Morris, Mulling, Neal, Newton, Odom, Olliff. . . . Second Row: Oliver, Olmstead, D. Parrish, E. Parrish, J. Parrish, W. Parrish, Patterson. . . . Third Row: Pearson, Perry, Philpot, Rackley, Ramsey, Redmond, Reiser.

MARGARET MOBLEY Millen, Ga.

CAROLYN MORRIS Swainsboro, Ga.
Lambda Theta Chi

GEORGE MULLING Baxley, Ga.
Iota Pi Nu

THOMAS NEAL Thompson, Ga.

ETHELYN NEWTON Garfield, Ga.

JULIA ODOM Girard, Ga.
Delta Lambda Delta

DIGHT OLLIFF Statesboro, Ga.
Delta Sigma

CLINTON OLIVER Glennville, Ga.

CECIL OLMSTEAD Hinesville, Ga.
Iota Pi Nu

LOUISE O'NEAL Vidalia, Ga.

DORIS PARRISH Brooklet, Ga.

EDWENA PARRISH Portal, Ga.

JACK PARRISH Pembroke, Ga.

WALTER J. PARRISH Adel, Ga.

HIRAM PATTERSON Alamo, Ga.
Delta Sigma

MARIE PEARSON Savannah, Ga.
Lambda Theta Chi

MARY THOMAS PERRY Dover, Ga.
Dux Domina

HELEN PHILPOT Albany, Ga.

FRANCES RACKLEY Waynesboro, Ga.

BILL THOMAS RAMSEY Statesboro, Ga.
Delta Sigma

SARA LOU REDMOND Milledgeville, Ga.

JOHN REISER Clio, Ga.



First Row: Robertson, Rogers, T. Rountree, R. Rountree, Rumph, Salley, Simmons. . . . Second Row: C. Smith, F. Smith, R. Smith, Sowell, Stephens, Strickland, Swinson. . . . Third Row: Thigpen, M. Thomas, O. Thomas, Tootle, Turk, Turner, Usher.

HARRY ROBERTSON Waycross, Ga.
Delta Sigma

SUE NELL ROGERS Manassas, Ga.

THERA DELL ROUNTREE Canoochee, Ga.
Delta Lambda Delta

ROSS ROUNTREE Summit, Ga.
Iota Pi Nu

SAM RUMPH Marshallville, Ga.
Iota Pi Nu

NANCY JIM SALLEY Cedartown, Ga.
Dux Domina

MARTHA WILMA SIMMONS Statesboro, Ga.
Epicurean

CHARLES SMITH Chula, Ga.
Delta Sigma

FRED SMITH Statesboro, Ga.

ROY LEE SMITH Swainsboro, Ga.
Delta Sigma

SID SMITH Statesboro, Ga.

ANNIE TOM SOWELL Hilltonia, Ga.

CARLTON STEPHENS Sycamore, Ga.

WYLENE STRICKLAND New Smyrna Beach, Fla.

MYRTICE SWINSON Statesboro, Ga.

DONNA THIGPEN Dublin, Ga.
Sigma Gamma

MARY KATHERINE THOMAS Waycross, Ga.
Sigma Gamma

OLIVER THOMAS Register, Ga.

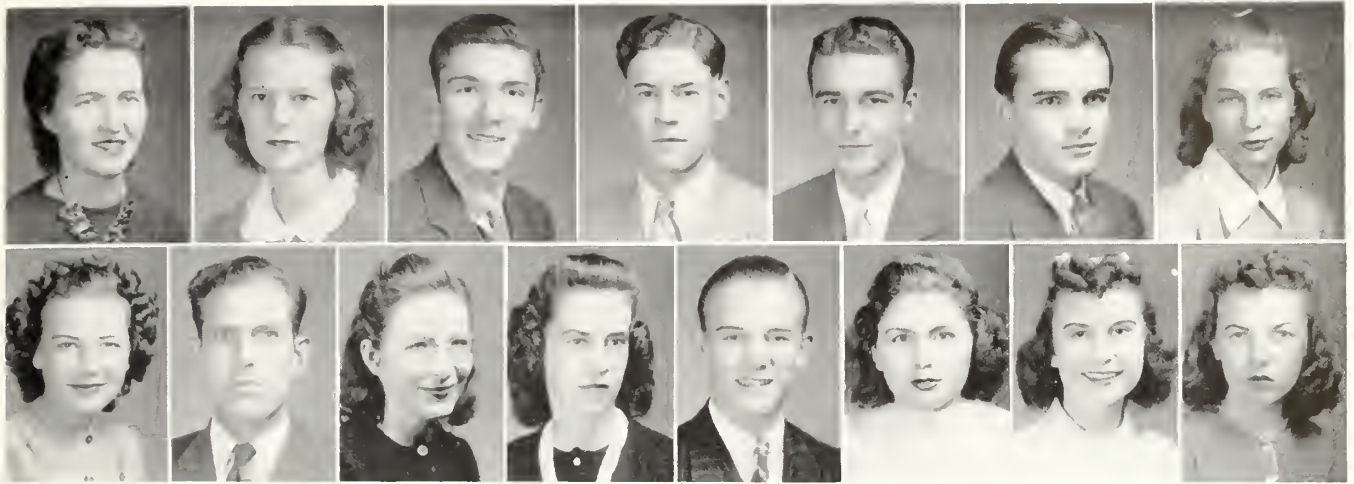
MARY ELIZABETH TOOTLE Glennville, Ga.

FLOYD TURK Ocilla, Ga.
Bugger-Dagger

BILLIE TURNER Millen, Ga.
Epicurean

OLAN USHER Brooklet, Ga.

S O P H O



First Row: Vause, Ward, Wardlow, H. Waters, W. Waters, Watson, Weitman. . . . Second Row: L. Williams, O. Williams, Williamson, Wilson, Wingate, Woodard, Wyatt, Yandle.

WILLIE VAUSE Garfield, Ga.
 HILDA WARD Blackshear, Ga.
 "X" Club
 FLOYD WARDLOW Ashburn, Ga.
 HAROLD WATERS Statesboro, Ga.
 Iota Pi Nu
 WILLIAM WATERS Savannah, Ga.
 Delta Sigma
 DAVID WATSON Fitzgerald, Ga.
 NANCY ETHELDA WEITMAN Alamo, Ga.
 Lambda Theta Chi
 WILLIAM W. WILKIN Colquitt, Ga.

LOUISE WILLIAMS Wrightsville, Ga.
 OSBORN LEE WILLIAMS Register, Ga.
 MARCIA WILLIAMSON Oak Park, Ga.
 DOROTHY WILSON Statesboro, Ga.
 JAMES WINGATE Pelham, Ga.
 Bugger-Dagger
 MINNIE LOU WOODARD Chauncey, Ga.
 OUIDA WYATT Brooklet, Ga.
 Epicurean
 LYNETTE YANDLE Lyons, Ga.
 Lambda Theta Chi

M O R E S

FRESHMAN CLASS



Perryman, Oglesby, DeLoach, Gunter, Bruner.

OFFICERS

OFFICERS

JOE OGLESBY	President
BILLY DeLOACH	Vice-President
MARCUS BRUNER	Secretary
VIRGINIA PERRYMAN	Treasurer

STUDENT COUNCIL REPRESENTATIVE

JIMMY GUNTER

SPONSORS

"COACH" B. B. SMITH

MISS MALVINA TRUSSELL



TRUSSELL

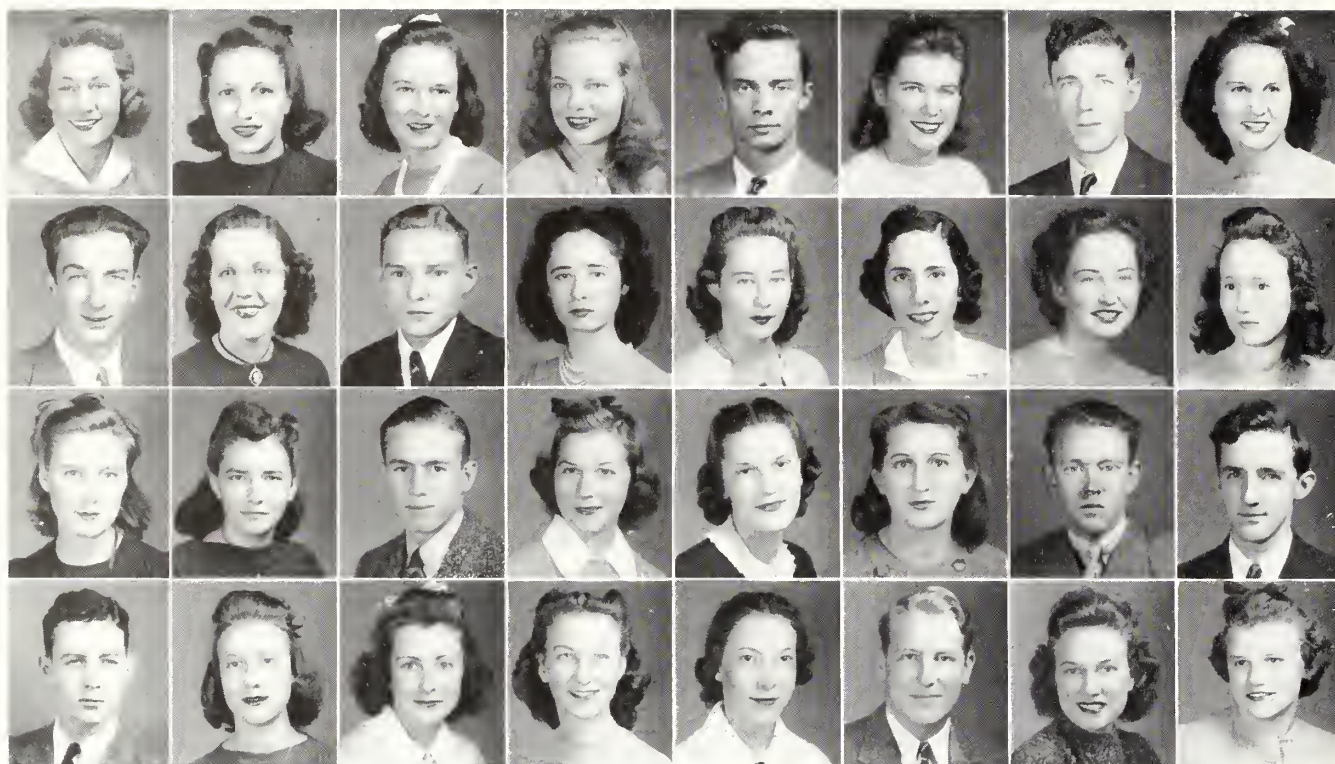
SMITH



First Row: Alford, Allen, Bacon, Banks, Barber, H. Bargeron, S. Bargeron, Baron. . . . Second Row: Blackburn, Braddy, Bradley, Bragg, Brannen, Brantley, Brewton, Brown. . . . Third Row: M. Brown, R. Brown, Brunner, Bryant, Bunce, Butler. . . . Fourth Row: Candler, Carter, Cheshire, Claxton, Cliett, Cobb, Cooksey, Corbin.

ANNELLE ALFORD	Fort Valley, Ga.
FRANCIS ALLEN	Statesboro, Ga.
LOUISE BACON	Pembroke, Ga.
CHARLES BALLENGER	Waycross, Ga.
MARY ETHEL BANKS	Sylvester, Ga.
INEZ BARBER	Bainbridge, Ga.
HELEN BARGERON	Waycross, Ga.
SYLVIA BARGERON	Sardis, Ga.
MARGARET MARY BARON	Savannah, Ga.
ROY BAYNHAM	Statesboro, Ga.
FRANCES BLACKBURN	Statesboro, Ga.
JAMES BODDIFORD	Sylvania, Ga.
LOUISE BOOTH	Homerville, Ga.
ROBBIE BRADY	Adrian, Ga.
SARA ALICE BRADLEY	Statesboro, Ga.
ELIZABETH BRAGG	Springfield, Ga.
DOROTHY BRANNEN	Portal, Ga.
WALDO EMERSON BRANTLEY	Hiltonia, Ga.
AUDREY BREWTON	Groveland, Ga.
NELLIE MAE BROOKS	Soperton, Ga.

BETTY BROWN	Stilson, Ga.
GERALD BROWN	Stilson, Ga.
JESSE ROBERT BROWN	Hapeville, Ga.
MARGARET BROWN	Statesboro, Ga.
RUBIE BROWN	Millen, Ga.
MARCUS BRUNER	Edison, Ga.
JAMES BRYAN	Brooklet, Ga.
MIRIAM BRYANT	Lakeland, Fla.
PAUL BUNCE	Statesboro, Ga.
ADDIS BURCH	Rentz, Ga.
BETTY BURNS	Glennville, Ga.
MONTESE BUTLER	Fort Valley, Ga.
ORVILLE CANDLER	Lincolnton, Ga.
HAZEL CARTER	Baxley, Ga.
WALTON CHESHIRE	Fort Gaines, Ga.
HENRIETTA CLAXTON	Kite, Ga.
FRANCES MARION CLIETT	Waynesboro, Ga.
HAZEL COBB	Bainbridge, Ga.
KATHRYN COOKSEY	Waycross, Ga.
DORIS CORBIN	Oak Park, Ga.



First Row: Cullens, Culpepper, Daniel, Davis, DeLoach, Denny, Donaldson, Drury. . . . Second Row: Duncan, Edenfield, Edwards, Elder, Ellison, Fernandez, Fields, Flanders. . . . Third Row: Forehand, Garner, Gatewood, Geiger, Gilder, Gillis, Godbee, R. Green. . . . Fourth Row: W. Greene, Gresham, Griffin, Groover, Gruver, Gunter, Hagan, Hall.

CAREY COX	Dawson, Ga.
ANN CULLENS	Waycross, Ga.
GLADINE CULPEPPER	Sigma Gamma Cordele, Ga.
CAROLYN DANIEL	Epicurean Bellville, Ga.
EVELYN SALLY DAVIS	Alpha Beta Chi Offerman, Ga.
BILLY DeLOACH	Alpha Beta Chi Savannah, Ga.
PHILIPPA DENNY	Iota Pi Nu Louisville, Ga.
GRADY DONALDSON	Pulaski, Ga.
ARLENE DRURY	Brunswick, Ga.
ROY DUNCAN	Millhaven, Ga.
FRANCES EDENFIELD	Wadley, Ga.
VERNON R. EDWARDS	Springfield, Ga.
HELEN ELDER	Cedartown, Ga.
KATHRYN ANN ELLISON	Dux Domina Girard, Ga.
ANAIS FERNANDEZ CENTURION	Delta Lambda Delta Havana, Cuba
MARY EVELYN FIELDS	Special Swainsboro, Ga.
RUBY DELL FLANDERS	Kite, Ga.
L. C. FLEMING	Baconton, Ga.
ANNCILE FOREHAND	White Oak, Ga.

NOEL FOWLER	Adrian, Ga.
DOROTHY GARNER	Waynesboro, Ga.
DUDLEY GATEWOOD	Americus, Ga.
MAIDA GEIGER	Delta Sigma Pembroke, Ga.
VIRGINIA GILDER	Epicurean Adrian, Ga.
MADelyn GILLIS	Adrian, Ga.
LEO R. GLOVER	Waycross, Ga.
FRANKLIN GODBEE	Millen, Ga.
RUSSELL GREEN	Arlington, Va.
WORTH GREENE	Waycross, Ga.
WILMOTINE GRESHAM	Sigma Gamma Union Point, Ga.
JOSEPHINE GRIFFIN	Girard, Ga.
GEORGE GROOVER	Statesboro, Ga.
MARY FRANCES GROOVER	Dux Domina Statesboro, Ga.
ANN GRUVER	Statesboro, Ga.
CHARLES GUILLEBEAU	Lincolnton, Ga.
JAMES GUNTER	Louisville, Ga.
FLORRIE WILDRED HAGAN	Iota Pi Nu Statesboro, Ga.
SAMOLENE HALL	Meeks, Ga.

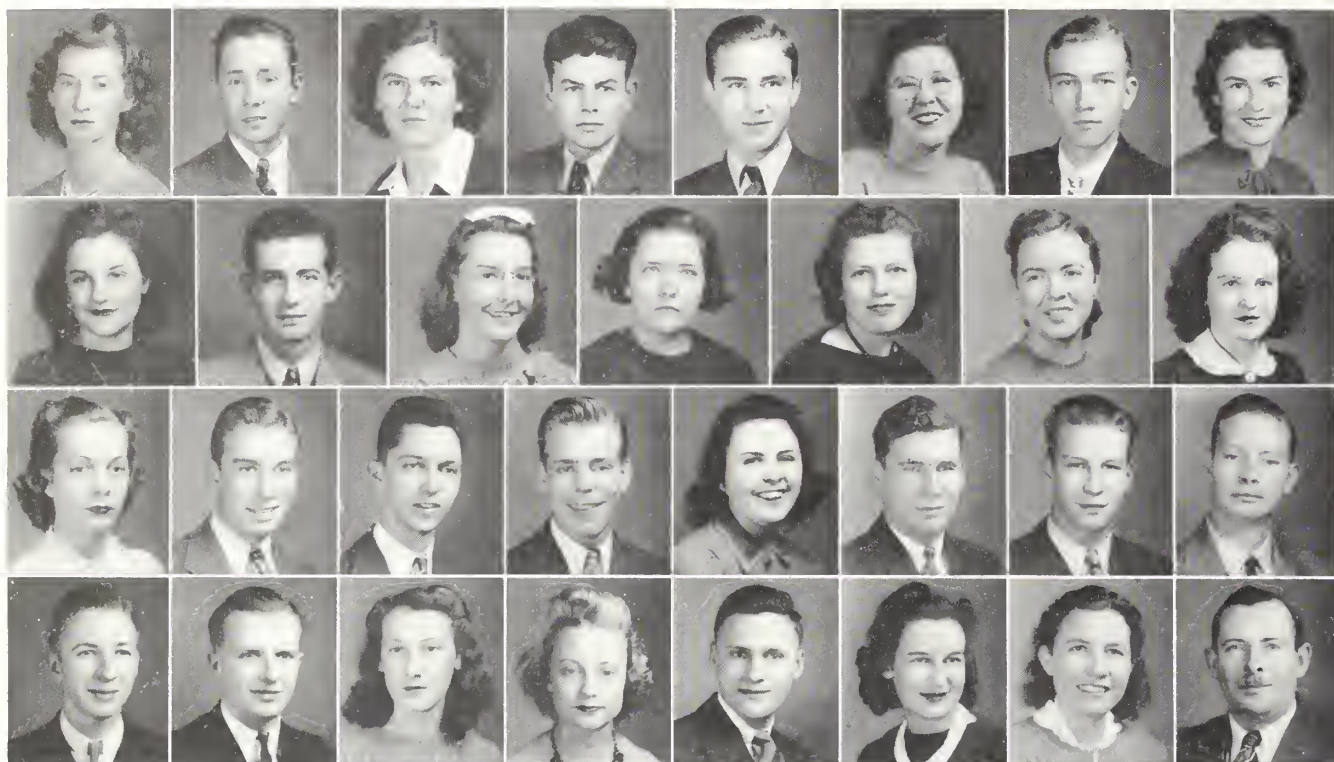
F R E S



First Row: Hardwick, E. Harrell, M. Harrell, Harrison, Hendrix, Hester, Hinely, M. Holland. . . . Second Row: Holloway, Horne, Hunt, J. Irvin, J. Irvin, Ivey, Jensen, Jeremias. . . . Third Row: Johnson, D. Jones, F. Jones, J. Jones, Jordan, Kellam, Kenan, Knight. . . . Fourth Row: B. Lanier, F. Lanier, M. Lanier, Layton, Leaphart, Marsh, D. Martin, F. Martin.

KATHRYN HARDWICK	Savannah, Ga.
EVANGELINE HARRELL	Collins, Ga.
MONROE HARRELL	College Park, Ga.
BILLY HARRIS	Brunswick, Ga.
ANNIE LOIS HARRISON	Brooklet, Ga.
JAMES HARVEY	Glennville, Ga.
JOYCE HENDRIX	Brunswick, Ga.
EVELYN HESTER	Soperton, Ga.
LEWIS HINELY	Springfield, Ga.
MARY LOUISE HOLLAND	Pulaski, Ga.
BILL HOLLOWAY	Register, Ga.
FRANK HORNE	Doerun, Ga.
ELOISE HUNT	Cedartown, Ga.
JANE IRVIN	Concord, Ga.
JUNE IRVIN	Concord, Ga.
MARIE IVEY	Jakin, Ga.
BRYAN JAMERSON	Cuthbert, Ga.
ORA LOU JENSEN	Attapulgus, Ga.
DOROTHEA JEREMIAS	Thompson, Ga.
VIVIAN RUNNELL JOHNSON	Garfield, Ga.
DOROTHY SUE JONES	Register, Ga.

FAY JONES	Metter, Ga.
JOE ALLEN JONES	Waycross, Ga.
ATHLEY JORDAN	Waycross, Ga.
JULIA ELIZABETH JORDAN	Wrens, Ga.
MELVIN JOYNER	Brunswick, Ga.
ELIZABETH KELLAM	Waycross, Ga.
ELISE KENAN	Statesboro, Ga.
ALBERT KEY	Statesboro, Ga.
RAY KICKLITER	Lyons, Ga.
KATHLEEN KNIGHT	Soperton, Ga.
BYRON LANIER	Metter, Ga.
FAYE LANIER	Pembroke, Ga.
MARIE LANIER	Metter, Ga.
WILLIAM LAYTON	Statesboro, Ga.
DAISY MAE LEAPHART	Union Point, Ga.
MARJORIE ELAINE LEWIS	Millen, Ga.
W. R. LOVETT	Statesboro, Ga.
HUSMITH MARSH	Statesboro, Ga.
DELLA MAE MARTIN	Hagan, Ga.
FAIN MARTIN	Edison, Ga.



First Row: Martin, May, Maynard, McKinley, McLeod, Meeks, Miller, Mixon. . . . Second Row: Morgan, Morrison, Mosley, Murchison, NeSmith, J. Newton, M. Newton, Nichols. . . . Third Row: Norman, Oglesby, C. Parker, J. Parker, Parks, H. Parrish, M. Parrish, Paschal. . . . Fourth Row: Penn, Pennington, Perry, Perryman, Pike, Poole, Powell, Price.

VIRGINA LEE MARTIN Patterson, Ga.
 AUBREY MAY Mitchell, Ga.
 EMILIE ANNETTE MAYNARD Newton, Ga.
 CHARLES MCKINLEY Siloam, Ga.
 DAVID McLEOD Brooklet, Ga.
 IMOGENE MEEKS Statesboro, Ga.
 LEWIS MILLEP Rocky Ford, Ga.
 MILBA MIXON Statesboro, Ga.
 BETTY ANN MORGAN Rockmart, Ga.
 ROBERT FRANKLIN MORRIS Statesboro, Ga.
 FRANK G. MORRISON Waycross, Ga.
 IDA LEE MOSLEY Louisville, Ga.
 RUTH OLA MURCHISON Alma, Ga.
 LUILENE NeSMITH Groveland, Ga.
 JIMMIE FRANCES NEWTON Waynesboro, Ga.
 MYRA NEWTON Leary, Ga.
 THEOLUS NICHOLS Screven, Ga.

ELLIE NORMAN Hartwell, Ga.
 JOE OGLESBY Eden, Ga.
 CHARLES PARKER Waycross, Ga.
 JAMES H. PARKER Collins, Ga.
 FRANCES PARKS Millen, Ga.
 HUBERT PARRISH Pulaski, Ga.
 MAX PARRISH Pulaski, Ga.
 HILL PASCHAL Albany, Ga.
 FITZHUGH PENN Monticello, Ga.
 IVEY L. PENNINGTON Oglethorpe, Ga.
 LOUISE PERRY Screven, Ga.
 VIRGINIA PERRYMAN Cedartown, Ga.
 HARRY PIKE Statesboro, Ga.
 DOROTHY POOLE Matthews, Ga.
 ELOISE POWELL Manassas, Ga.
 WILLIE EUGENE PRICE Graymont, Ga.

F R E S



First Row: Proctor, Rabun, Raburn, Rachels, Richardson, Ritch, Robinson, Rogers. . . . Second Row: Rowse, Saunders, Scarboro, Scruggs, Sheffield, Short, Shuman, Sims. . . . Third Row: E. Smith, H. Smith, H. Smith, J. Smith, M. Smith, Sowell, Sparks, Stanfield. . . . Fourth Row: Stapleton, Stevenson, Swetman, Thigpen, J. Thomas, M. Thomas, D. Thompson, L. Thompson.

CAROLYN PROCTOR Brooklet, Ga.
 BERNICE RABUN Warrenton, Ga.
 HILDA ONEITA RABURN Ideal, Ga.
 JEAN RACHELS Dublin, Ga.
 FRANK RAY Savannah, Ga.
 RACHAEL REBECCA RICHARDSON Hartwell, Ga.
 JIMMIE RITCH Patterson, Ga.
 THEONE ROBINSON Sardis, Ga.
 MARY NELL ROGERS Brunswick, Ga.
 RUNETTE ROUNTREE Statesboro, Ga.
 SARA HELEN ROWSE Statesboro, Ga.
 JEAN SAUNDERS Savannah, Ga.
 JIMMY SCARBORO Dublin, Ga.
 RUTH ELIZABETH SCRUGGS Naylor, Ga.
 MARIE SHEFFIELD Macon, Ga.
 LOUTRELLE SHORT Swainsboro, Ga.
 GEORGE SHUMAN Statesboro, Ga.
 HAROLD SIMS Pembroke, Ga.
 ELIZABETH SMITH Ellabell, Ga.

Dux Domina

Delta Sigma

Lambda Theta Chi

Sigma Gamma

HELEN VIRGINIA SMITH Stapleton, Ga.
 HENRIGENE SMITH Register, Ga.
 JACQUELINE SMITH Lyons, Ga.
 JOHN SMITH Alpha Beta Chi Statesboro, Ga.
 MAE SMITH Delta Sigma Douglas, Ga.
 RUTH SMITH Alpha Beta Chi Bidette, Ga.
 LENA SOWELL Hilltonia, Ga.
 GRACE SPARKS Glennwood, Ga.
 BOBBY STANFIELD Glennville, Ga.
 SARA STAPLETON Stapleton, Ga.
 MARY STEVENSON Brunswick, Ga.
 MAGGIE SWETMAN Alpha Beta Chi Alpharetta, Ga.
 JAMES DANIEL TARVER Wadley, Ga.
 MARY HELEN THIGPEN Garfield, Ga.
 JULIAN L. THOMAS Offerman, Ga.
 MARGARET CLYDE THOMAS Wrentz, Ga.
 DALE THOMPSON Adrian, Ga.
 LOUIE THOMPSON Willie, Ga.



First Row: R. Thompson, R. Thompson, Townsend, Turner, Tyson, Underwood, O. Usher. . . . Second Row: L. Usher, Warner, E. Waters, K. Waters, Watson, Weatherly, Webb. . . Third Row: Weems, Wells, Whelchel, J. Williams, J. Williams, W. Williams, Willie. . . . Fourth Row: Withrow, Wood, Woodrum, E. Wyatt, L. Wyatt, Wynn, Zittrouer.

REGINALD THOMPSON	Glennville, Ga.
RUBY THOMPSON	Reidsville, Ga.
MARY LOUISE TOWNSEND	Climax, Ga.
FRANCES TURNER	Jesup, Ga.
MARY FRANCES TYSON	Oak Park, Ga.
SIBYL UNDERWOOD	Statesboro, Ga.
OZEALIA USHER	Brooklet, Ga.
LONZA USHER	Lyons, Ga.
LILLIAN WARNER	Hapeville, Ga.
EFFIELYN WATERS	Statesboro, Ga.
KERMIT W. WATERS	Statesboro, Ga.
JAMES WATSON	Fitzgerald, Ga.
EVELYN WEATHERLY	Cedartown, Ga.
GEORGIA WEBB	Doerun, Ga.
LOCKE WEEMS	Augusta, Ga.
EVA JEAN WELLS	Harlem, Ga.

GEORGE WHALEY	Statesboro, Ga.
HARRIET WHELCHER	Lyons, Ga.
RICHARD WHIDBY	Adel, Ga.
NATHANIEL WHITE	Americus, Ga.
JEWELL WILLIAMS	Sardis, Ga.
WYNELLE WILLIAMS	Screven, Ga.
JERALDINE WILLIAMS	Register, Ga.
JEWELL WILLIE	Louisville, Ga.
DORIS LOUISE WITHROW	Odum, Ga.
HELEN WOOD	Macon, Ga.
GRACE WOODRUM	Millen, Ga.
ELOUISE WYATT	Savannah, Ga.
LEILA WYATT	Cedartown, Ga.
ROSEMARY WYNN	Glennwood, Ga.
UHLMA WYNN ZITTRouer	Newington, Ga.

S N A P S

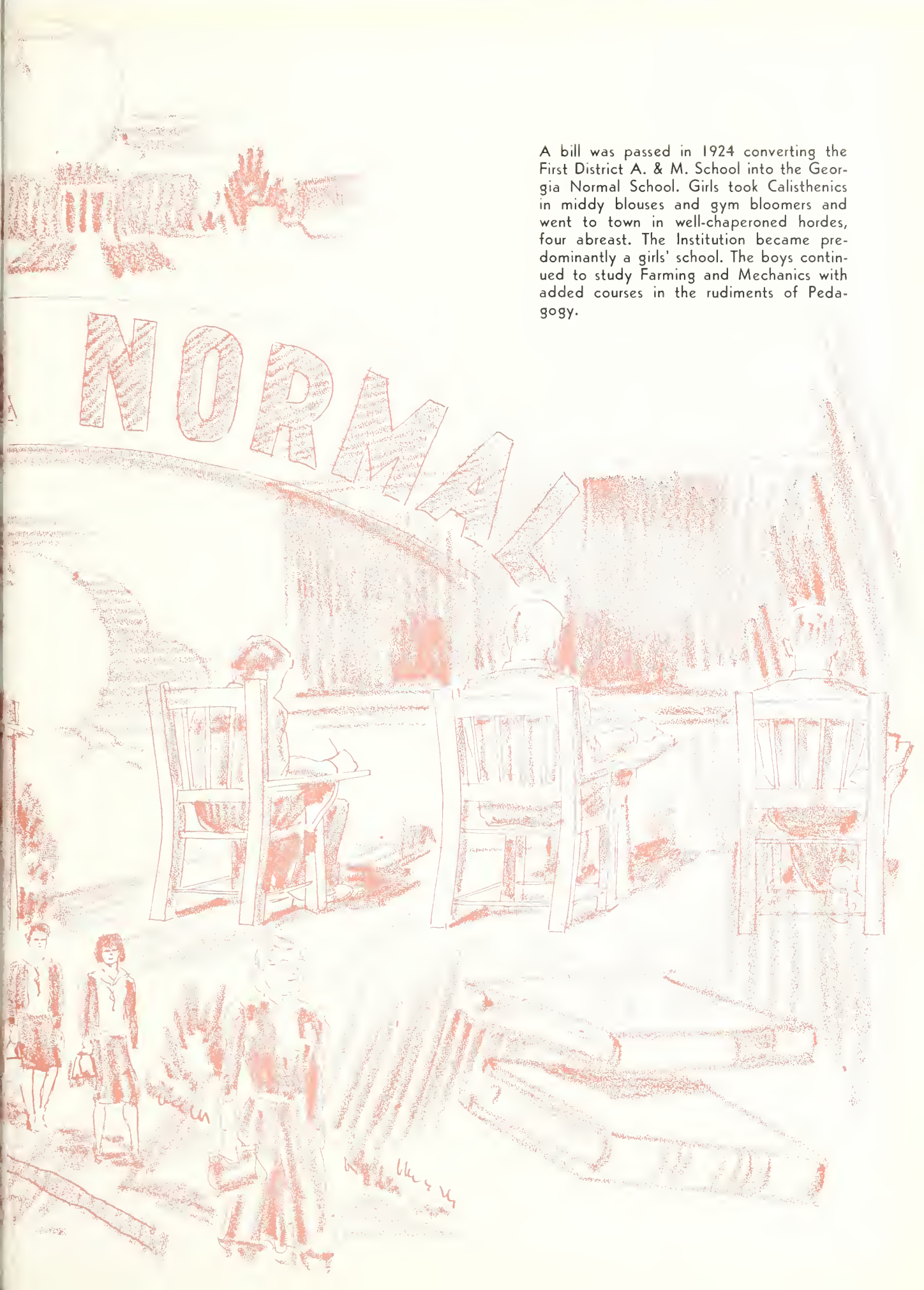


A lasting affair . . . Giving advice, Tom? . . . Swing high, swing low . . . Wynelle and Louise . . . Lady by the Hedge—must be Virginia . . . Cold, tired, and happy . . . Charlie and Louise . . . Beauty and T. C. . . . Maybe it is noise, but we like it . . . Football practice, or . . . ? Watcha know, Joe?



A bill was passed in 1924 converting the First District A. & M. School into the Georgia Normal School. Girls took Calisthenics in middy blouses and gym bloomers and went to town in well-chaperoned hordes, four abreast. The Institution became predominantly a girls' school. The boys continued to study Farming and Mechanics with added courses in the rudiments of Pedagogy.

NORMAL





ORGANIZATIONS



AND ACTIVITIES

STUDENT COUNCIL

The purpose of the Student Council is to represent the whole student interest; to afford a suitable and convenient medium of communication between the students and the school authorities; to direct the social activities of the students; and, in general, to create and preserve the customs and traditions of the school.



JOE INGRAM

Our Town Car



OFFICERS

JOE INGRAM
President

GESMON NEVILLE
Vice-President

CATHERINE GAINEY
Secretary

T. A. BACON
Treasurer



Seated: Watson, Jones, Dunn, Bowman, Gainey, Reppard, Stanfield, Gunter, Bacon. . . . Standing: Neville, Oglesby, Ingram, Blitch, Robertson.

MEMBERS

CHARLES STANFIELD	President Senior Class
OLIVER REPPARD	Senior Representative
HOMER BLITCH	Senior Representative
DAVID S. BOWMAN	President Junior Class
EULA BETH JONES	Junior Representative
JOHN H. DUNN	Junior Representative
HARRY ROBERTSON	President Sophomore Class
DAVID E. WATSON	Sophomore Representative
JOE OGLESBY	President Freshman Class
JIMMY GUNTER	Freshman Representative

H O U S E



EAST HALL

EMOLYN RAINEY
President

CATHERINE GAINEY
Vice-President

FRANCES BREEN
Secretary-Treasurer

SARA REID BOWEN

LUCY BRINSON

MIRIAM BRINSON

CHRISTINE COLEMAN

IDA CREECH

FRANCES DEAL

FRANCES HARRISON

KATHRYN JOINER

BETTY ANN MORGAN

NANCY SALLEY

BOBBY STANFIELD

LEWIS HALL

FAY ALDERMAN
President

ELIZABETH McNALLY
Vice-President

EDWINA PARRISH
Secretary-Treasurer

MARY ETHEL BANKS

LOIS BREWTON

IRMA GLISSON

AZILE HARTLEY

MERVIN SHIVERS



COUNCILS

WEST HALL

EDITH DAVIS
President

VIRGINIA EASON
Vice-President

NELLIE McDANIEL
Secretary-Treasurer

MARILYN DURRENCE
CAROLYN FOSTER
WINIFRED HARRELL
LORENE HEIDT
JANE IRVIN
JUNE IRVIN
DOROTHEA JEREMIAS
NELLORENE McCOLLUM
ROGER McMILLAN
HAZEL MIXON
SUSIE BELLE McSMITH
HELEN PHILPOT
RACHEL SHEFFIELD
JACQUELINE SMITH



SANFORD HALL

T. A. BACON
President

CHARLES ALFORD
RALPH BACON
DAVID BOWMAN
EARLE BYRD
O NEAL CAVE
JOHN DUNN
EDDIE NAJJAR
GEORGE PAFFORD
HARRY ROBERTSON
ROSS ROUNTREE
CHARLES STANFIELD
CARLTON STEVENS
HAROLD TILLMAN
JAMES WINGATE
J. W. ZETTEROWER



Y. W. C. A.



Yandle, Davis, Gainey, Alderman, Rainey, Harrison, McNally, Turner, Hughes, Wyatt.

The purpose of the Young Women's Christian Association of Georgia Teachers College is that we, the members, unite in the desire to realize full and creative life through a growing knowledge of God. We determine to have a part in making this life possible for all people.

In this task we seek to understand Jesus and follow him. To fulfill this purpose we sponsor regular religious services—morning watch is our brief daily devotion service to give us a good start in the day's work. The regular meeting on Wednesday night gives us a chance to pause in the middle of the week and think over our life and get suggestions and strength to carry on the rest of the week. On Sunday night we join with the Y. M. C. A. for campus-wide vesper services.

OFFICERS

EMOLYN RAINEY	President
BURDELLE HARRISON	Vice-President
FRANCES HUGHES	Secretary
CATHERINE GAINES	Treasurer
MRS. MARJORIE GUARDIA	Faculty Advisor

CABINET

QUIDA WYATT
SARA REID BOWEN
LYNETTE YANDLE

EDITH DAVIS
AZILE HARTLEY
ELIZABETH McNALLY

ROGER McMILLAN
BILLIE TURNER
FAY ALDERMAN



Y. M. C. A.

Standing: Pafford, Watson, Mr. Thompson, Bacon, Boatwright . . . Seated: Stephens, Ayres, Robertson, Stanfield, Alford, Gunter, Thomas, Bowman.

The Y. M. C. A. stands for all that is good and clean and true. It renders much service and aid in the solution of any problems that may arise. Through intramural athletics, social welfare, and religious work, varied opportunities are provided for student participation.

OFFICERS

CHARLES STANFIELD	President
JOHN BEN AYRES	Vice-President
CHARLES ALFORD	Secretary
DAVIS S. BOWMAN	Treasurer
MR. PAUL THOMPSON	Faculty Adviser

CABINET

HARRY ROBERTSON	Vespers	CARL HUTCHINS	Social
JIMMY GUNTER	Vespers	WARNER KENNON	Athletics
JAMES C. STEPHENS	Evening Watch	OLIVER THOMAS	Chorister
GEORGE G. PAFFORD	Evening Watch	DAVID E. WATSON	Membership
MARCUS BRUNER	Pianist		



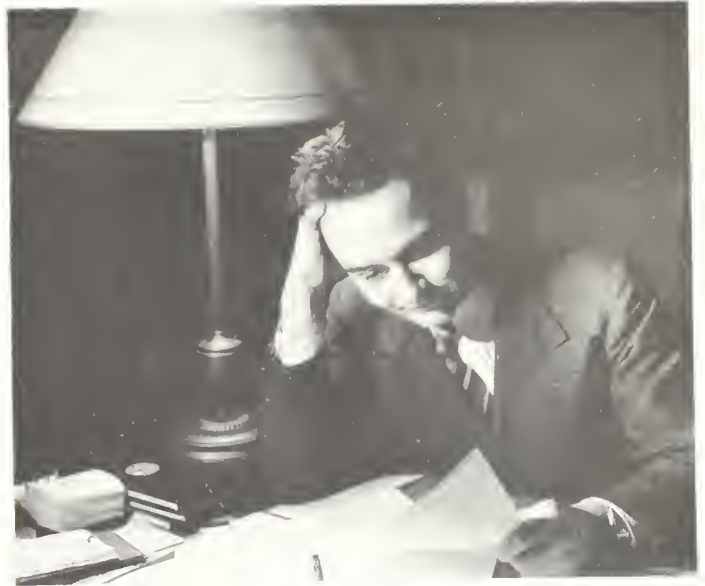
1941
REFLECTOR
STAFF

EDITORIAL STAFF

CATHERINE GAINES	Editor
EDDIE NAJJAR	Associate Editor
BETTIE McLEMORE	Club Editor
JOHN KING	Club Editor
EMOLYN RAINEY	Art Editor
HOMER BLITCH	Sports Editor
T. A. BACON	Photographic Editor
JIMMY SCARBORO	Photographic Editor

The staff of the 1941 REFLECTOR finds itself where all annual staffs find themselves at one time or another—Behind the Eight Ball.





GESMON NEVILLE

BUSINESS STAFF

GESMON NEVILLE	Business Manager
JOHN BEN AYERS	Advertising Manager
GEORGE PAFFORD	Advertising Manager
JOY BOWDEN	Advertising Manager
CHARLES STANFIELD	Circulation Manager



For a change, the Business Staff
ponders over some numerical fig-
ures.

THE GEORGE-ANNE

Established 1927

Member Georgia Collegiate Press Association

Published bi-weekly by the students of Georgia Teachers College, Collegeboro, Ga.

Published bi-weekly from September till June except during holidays

Subscription rate: 10c per copy; \$1.00 per year.

Entered as second-class matter at the postoffice at Collegeboro, Ga., under temporary permit.

ELBERT SANDERS Editor
JOHN BEN AYERS Business Manager

EDITORIAL STAFF

HARRY ROBERTSON Associate Editor
DAVID WATSON Assistant Business Manager
FRANCES DEAL Society Editor
HOMER BLITCH Sports Editor
FRED SMITH Staff Cartoonist
JIMMY SCARBORO Staff Photographer

REPORTERS

Frances Harrison, Oliver Thomas, Nancy Salley, David Watson, Joy Bowden, Edwin Groover, Becky Hicks, Russell Green, Eula Beth Jones, Leon Culpepper, Thomas Curry, David Bowman, Roy Lee Smith, Charles Stanfield, Carlton Ahl, Elliott Boswell, Wynelle Williams, Miriam Brinson, Chess Faircloth, Roger McMillen, Clinton Oliver, Thera Dell Rountree, Charles Parker, Dight Olliff, Evangeline Harrell, Madeline Gillis, Skeet Kennon, and Joe Allen Jones.



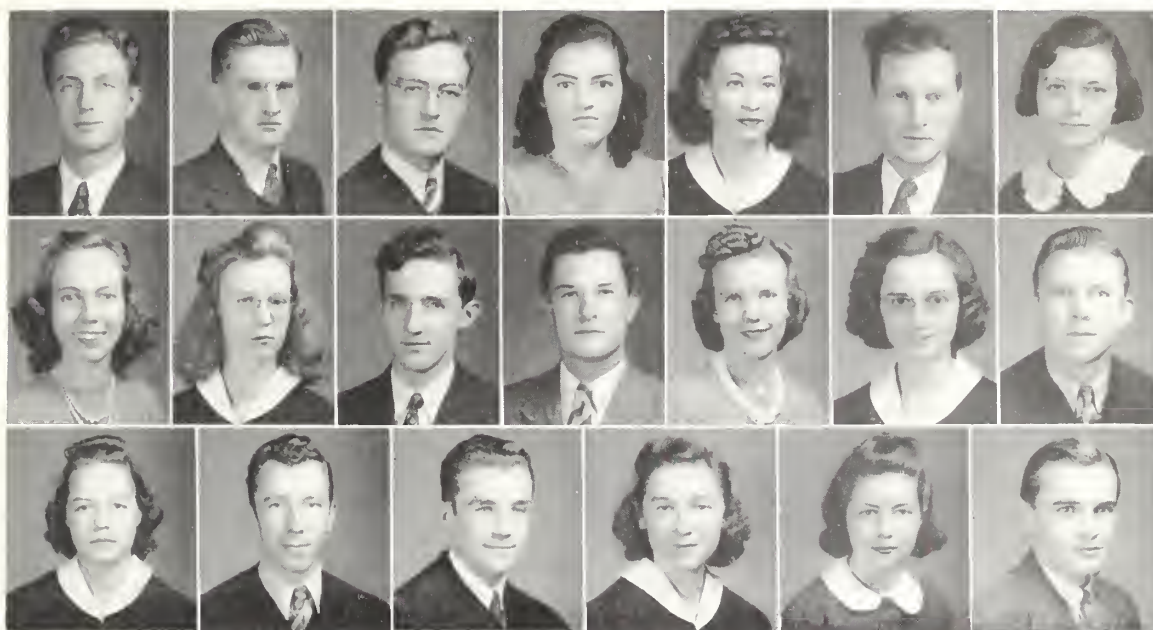
Editor

Editorial Staff



Reporters

INTERNATIONAL RELATIONS CLUBS



First Row: Alford, Bunce, Byrd, Cato, Davis, Destler, English. . . . Second Row: Forehand, Goff, Greene, Kemp, McCollum, Perkins, Reeves. . . . Third Row: Reppard, Sanders, Stanfield, Toney, Turner, Watson.

OFFICERS

CHARLES STANFIELD
President

DORIS TONEY
Vice-President

EMILY GOFF
Secretary-Treasurer

DR. C. M. DESTLER
Sponsor

With the hope of bettering our lives and the relations between men everywhere the International Relations Club seeks to promote an intelligent interest in world affairs. This is the only sound approach toward realizing our hopes.

MEMBERS

CHARLES ALFORD
ISAAC BUNCE
EARL BYRD
ELIZABETH CATO
EDITH DAVIS
MERLE ENGLISH
SARA FOREHAND
EMILY GOFF
RUSSELL GREENE

PILCHER KEMP
NELLORENE McCOLLUM
SARA PERKINS
BILL TOM REEVES
OLIVE REPPARD
ELBERT SANDERS
CHARLES STANFIELD
DORIS TONEY
FRANCES TURNER

DAVID WATSON



GOFF, STANFIELD, TONEY.

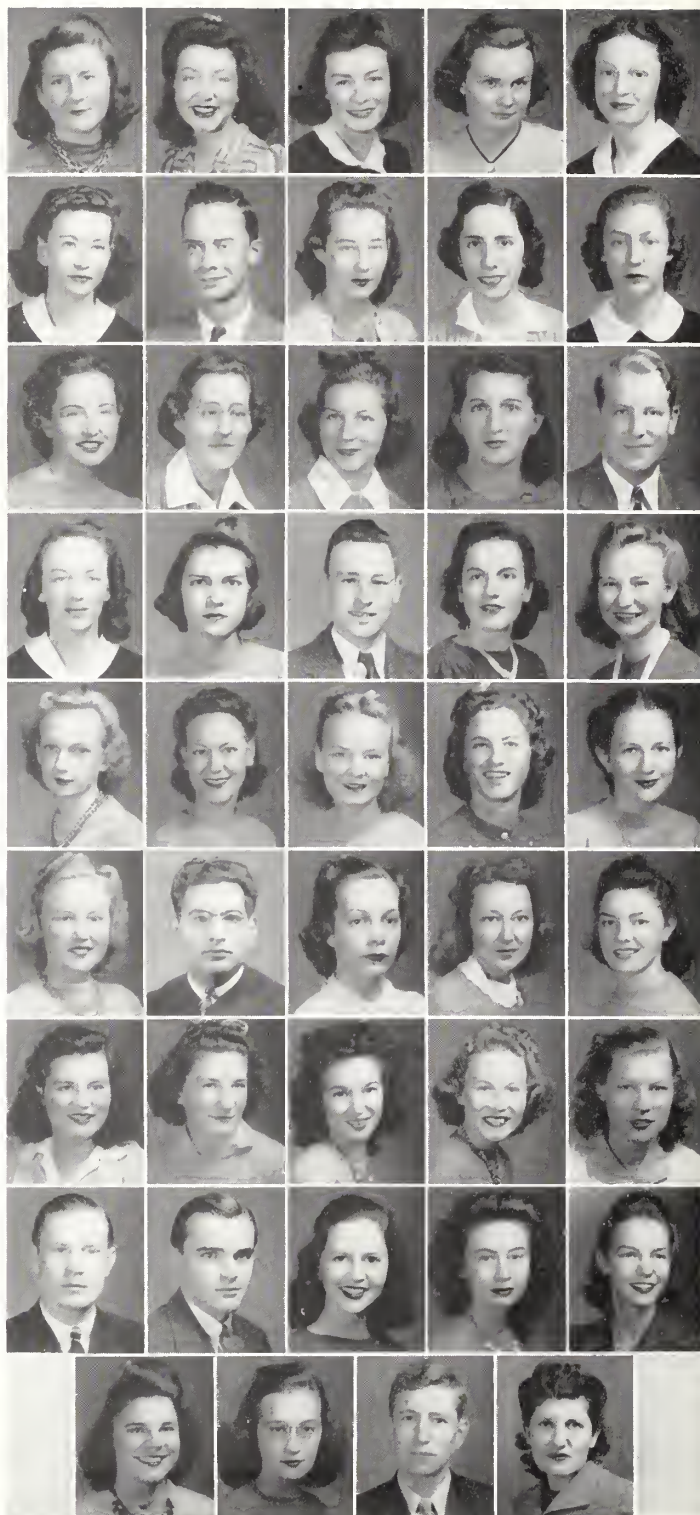
THE MASQUERS

OFFICERS

EDDIE NAJJAR President
 EULA BETH JONES Vice-President
 JOYCE JONES Secretary
 DOT ANDERSON Treasurer
 MISS MAMIE JO JONES Sponsor

MEMBERS

LOUISE BACON	LOTTIE MILLER
AUDREY BREWTON	CAROLYN MORRIS
LOIS BREWTON	ETHELYN NEWTON
MIRIAM BRINSON	ELLIE NORMAN
EDITH DAVIS	JULIA NORMAN
BILLY DeLOACH	MARY THOMAS PERRY
KATHERINE ELLISON	JEAN SAUNDERS
ANAIIS FERNANDEZ	ELIZABETH SMITH
MAXANN FOY	JACOUELYN SMITH
MARY FIELDS	MARY KATHERINE THOMAS
LETA GAY	HELEN THIGPEN
MAIDA GEIGER	PATE WARREN
MADelyn GILLIS	DAVID WATSON
JAMES GUNTER	NANCY WEITMAN
MARIE HAMRICK	BETTIE WILLIAMS
FRAN HARRISON	WYNELLE WILLIAMS
JACK HATCHER	HELEN WOOD
KATHRYN JOYNER	UHLMA WYNN ZITTEROWER
MADelyn LAMB	MARY POWELL
ROGER McMILLAN	JOE FARMER
MISS MAMIE JONES	





OUR TOWN



M U S I G M A

OFFICERS

ELLIOTT BOSWELL President
 BILLY WINGATE Vice-President
 DORIS TONEY Secretary
 PILCHER KEMP Treasurer
 MRS. E. L. BARNES Sponsor
 MR. R. J. NEIL Sponsor



Kemp, Toney, Boswell, Wingate.

NATIONAL MUSIC FRATERNITY

Alpha Chapter Founded at Culver-Stockton College, Canton, Mo., 1931. Delta Chapter Founded at Georgia Teachers College, 1939.

Motto: Music Exalts Life.

Colors: Blue and Gold.

Song: "Hail to Thee Mu Sigma."

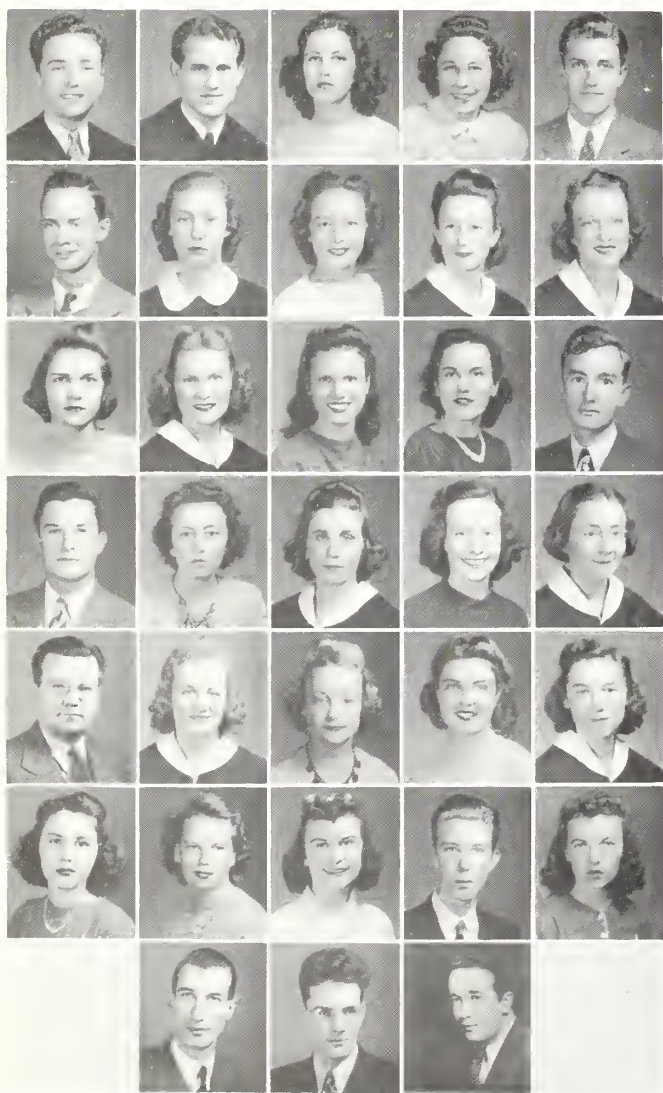
MEMBERS

PILCHER KEMP
 FAY LANIER
 BETTIE McLEMORE
 MARY MUIRHEAD
 ELLA COOKE NEASE
 MARY PAULK
 VIRGINIA PERRYMAN
 DONNA THIGPEN
 DORIS TONEY
 BILLIE TURNER
 JEWEL WILLIE
 OUIDA WYATT
 BILLY WINGATE
 LYNETTE YANDLE

T. A. BACON
 CARROLL BEASLEY
 ELLIOTT BOSWELL
 RUTH CONE
 LEON CULPEPPER
 BILLY DeLOACH
 MAXANN FOY
 MARY FRIES
 CATHERINE GAINEY
 BURDELLE HARRISON
 ALICE HODGES
 FRANCES HUGHES
 EULA BETH JONES
 JAMES JONES

HONORARY MEMBERS

MR. ERNEST HARRIS
 MR. LORRAN LATHAM
 MR. J. MALCOLM PARKER





CHORUS

RONALD J. NEIL Director

CATHERINE GAINNEY Accompanist

BOARD OF DIRECTORS

CATHERINE GAINNEY, Chairman
EELIOT BOSWEE

EEON CULPEPPER
BURDELLE HARRISON
FRANCES HUGHES

DORIS TONEY
FRANCIS TRAPNEEE

MEMBERS

FAY ALDERMAN
SYLVIA BARGERON
MARGARET BARON
JOY BOWDEN
LOUISE BEATY
HENRIETTA CLAXTON
FRANCES CLIETT
RUTH CONE
EMILY CROMLEY
MARIETA COOK
KITTY COOKSEY
GLADINE CULPEPPER
FRANCES DEAL
GRACE EVERETT
ANCILE FOREHAND
MARY FRIES
ABBIE GRIFFIN
JOSEPHINE GRIFFIN
WILMOTINE GRESHAM
EMILY GOFF
SAMOLENE HALL
ALICE HARRIS
BURDELLE HARRISON
REBECCA HICKS
SARA HOWELL
FRANCES HUGHES
ELOISE HUNT

JANE IRVIN
JUNE IRVIN
DOROTHEA JEREMIAS
VIVIAN JOHNSON
GERALDINE KEEFE
FAYE LANIER
BERNICE LAWRENCE
DAISY MAY LEAPHART
JANE MATHIS
ANNETTE MAYNARD
JUDSON MCKINNEY
BETTIE MCLEMORE
MARY MUIRHEAD
ELLA COOK NEASE
PAULINE NEIL
JIMMIE FRANCES NEWTON
EDWENA PARRISH
MARY PAULK
LOUISE PERRY
VIRGINIA PERRYMAN
BERNICE RABUN
THEONE ROBINSON
THERA DELL ROUNTREE
NANCY JIM SALLEY
MARIE SHEFFIELD
JANE SIMPSON
GRACE SPARKS

EUNICE TAYLOR
DONNA THIGFEN
RUBY THOMPSON
DORIS TONEY
ELIZABETH TOOTLE
LOUISE TOWNSEND
ELLA SUE TRAYNHAM
HARRIET WHELCHER
ELOUISE WYATT
LEILA WYATT
OUIDA WYATT
LYNETTE YANDLE
CATHERINE GAINNEY
ANN GRUVER
EVANGELINE HARRELI
EVELYN WEATHERLY
ELLIOTT BOSWELL
LEON CULPEPPER
JOHN GRAHL
FRANCIS GROOVER
POGER HOLLAND
PILCHER KEMP
THOMAS JENKINS
CHARLES MCKINLEY
CHARLES PARKER
FRANCIS TRAPNELL
HAROLD WATERS



BAND

CLAUDE ADAMS
CHARLES ALFORD
T. A. BACON
CHARLES BALLENGER
CARROLL BEASLEY
JOY BOWDEN
DAVID BOWMAN
BOBBY BRINSON
MARGARET BROWN
DAN CHAMBLESS
RUTH CONE
GLADINE CULPEPPER
LEON CULPEPPER
THOMAS CURRY
CHESS FAIRCLOTH

MEMBERS

LEO GLOVER
FRANCIS GROOVER
MARY FRANCES GROOVER
JAMES HARVEY
REBECCA HICKS
ROGER HOLLAND
BILL HOLLOWAY
BRYAN JAMERSON
DOROTHEA JEREMIAS
JAMES JONES
KATHRYN JOYNER
PILCHER KEMP
ALBERT KEY
LAMBUTH KEY
MADELYN LAMB
MARY FRIES

W. R. LOVETT
NELLIE McKANIEL
ELLA COOKE NEASE
GESMON NEVILLE
FRANCES NEWTON
ELLIE NORMAN
MARY PAULK
CHARLES PARKER
FITZHUGH PENN
CAROLYN PROCTOR
DELL ROUNTREE
BILL SNEED
DONNA THIGPEN
FLOYD TURK
HAROLD WATERS

OFFICERS

LEON CULPEPPER
President

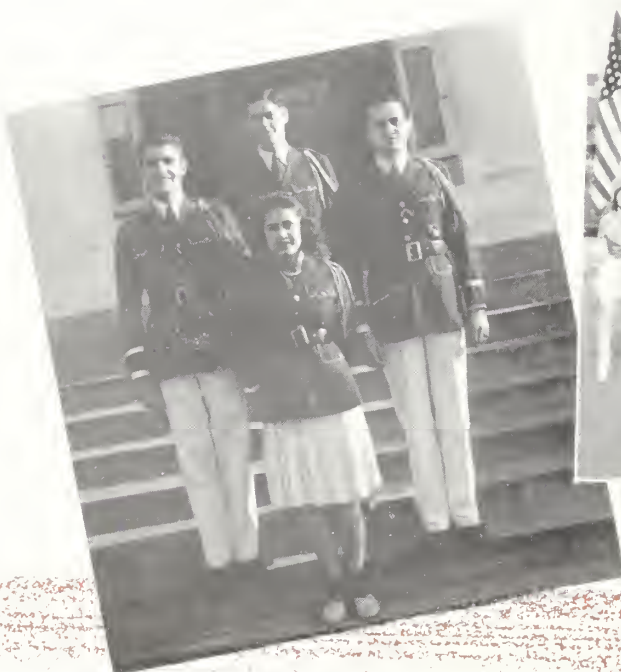
DAVID BOWMAN
Vice-President

DELL ROUNTREE
Secretary

HAROLD WATERS
Treasurer

GLADINE CULPEPPER
Drum Major

MARGARET BROWN
KATHRYN JOYNER
Majorettes



VESPER CHOIR

OFFICERS

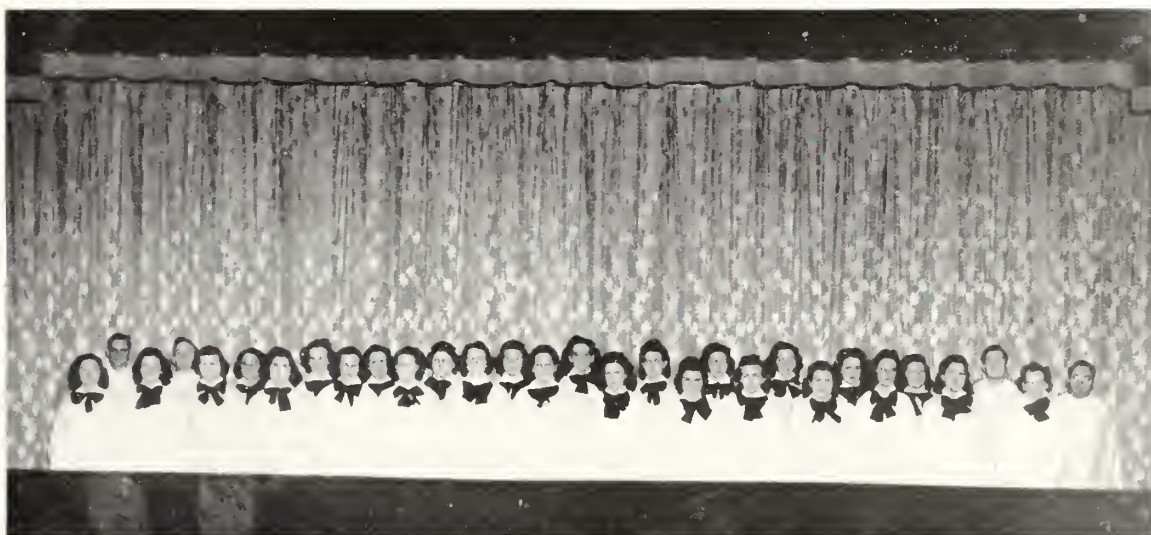
DORIS TONEY	President
LYNETTE YANDLE	Vice-President
JUNE IRVIN	Secretary
JANE IRVIN	Treasurer
BURDELLE HARRISON	Director
MR. AND MRS. IVAN HOSTETLER	Sponsors

MEMBERS

FAY ALDERMAN
DOT ANDERSON
GERALDINE BEASLEY
HENRIETTA CLAXTON
FRANKIE CLIETT
CAROLYN DANIEL
EMILY GOFF
WILMOTINE GRESHAM

BURDELLE HARRISON
JOYCE HENDRIX
JANE IRVIN
JUNE IRVIN
MARIE IVEY
EDNA JACKSON
VIVIAN JOHNSON
PILCHER KEMP
DAISY MAE LEAPHART

MYRA NEWTON
BERNICE RABUN
BUDDY ROOKS
RUTH SCRUGGS
LOUISE TOWNSEND
DORIS TONEY
HILDA WARD
LYNETTE YANDLE



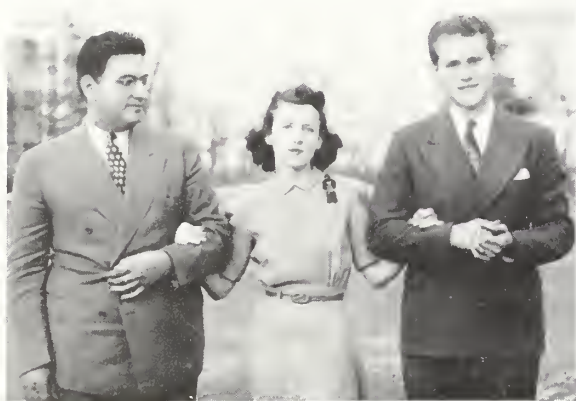


First Row: Boswell, Brewton, Brinson, Cox, Deal, Ellis. . . . Second Row: Goff, Guardian, Harrison, Hamrick, McCollum, McNally. . . .
Third Row: Mathis, Morgan, Najjar, Nease, Rogers, Simpson, Williams.

ENGLISH CLUB

OFFICERS

ELLIOTT BOSWELL	President
FRANCES DEAL	Vice-President
ARLAND COOPER	Secretary
EDDIE NAJJAR	Treasurer
MRS. MARJORIE GUARDIA	Sponsor



Najjar, Deal, Boswell.



ELLIOTT BOSWELL
LOIS BREWTON
LUCY BRINSON
BILLY COX
ARLAND COOPER
FRANCES DEAL
ALTON ELLIE

MEMBERS

EMILY GOFF	CLAIRE MINCEY
FRANCES HARRISON	JACK MORGAN
MARIE HAMRICK	EDDIE NAJJAR
NELLORENE MCCOLLUM	ELLA COOKE NEASE
ELIZABETH McNALLY	ANNA ROGERS
JANE MATHIS	JANE SIMPSON
	JEANNETTE WILLIAMS



OFFICERS

GESMON NEVILLE
JOHN BEN AYERS
WILLIE HUGH HINELY
GRADY DONALDSON

GEORGE PAFFORD
JOE HURST
INMAN DAVIS
FRANK OLLIFF

SPONSORS

MR. IVAN HOSTETLER MR. E. G. LIVINGSTON

MEMBERS

JOHN BEN AYERS
W. B. AKINS
S. N. BROCK
JAMES BURPITT
ORVILLE CANDLER
INMAN DAVIS
GRADY DONALDSON
VERNON EDWARDS
FRANCIS GROOVER
LEWIS J. HINELY
WILLIE HUGH HINELY
JOE HURST

JOE INGRAM
GESMON NEVILLE
FRANK OLLIFF
GEORGE PAFFORD
HUBERT PARRISH
MAX PARRISH
LINDSEY PENNINGTON
CHARLES SMITH
SID SMITH
CLAY WALLER
PATE WARREN
LEE WILLIAMS



First Row: Hostetler, Neville, Ayers, Livingston. . . . Back Row: Hinely, Donaldson, Pafford, Hurst, Davis, Olliff.

INDUSTRIAL ARTS CLUB



First Row: Anderson, Barber, Baron, Beasley, Bolton, Brinson, L. Brinson, Claxton, Cook, Davis, Edenfield. . . . Second Row: English, R. Flanders, N. Flanders, Fields, Gay, W. Gay, Gilder, Ivey, Jackson, Johnson, Jones. . . . Third Row: Lanier, Lawrence, McCollum, McGehee, Moore, Morgan, Newton, Perkins, Poole, Powell. . . . Fourth Row: Robinson, Robson, Smith, Swetman, Usher, Welchel, Williams, Wynn, Aycock, Brown.

HOME ECONOMICS CLUB

DOROTHY ANDERSON
MILBURN AYCOCK
MARJORIE BACON
INEZ BARBER
MARGARET BARON
GERALDINE BEASLEY
EDITH BRINSON
LUCY BRINSON
RUBY BROWN
HENRIETTA CLAXTON
MARIETTA COOK
EDITH DAVIS
FRANCES EDENFIELD
MERLE ENGLISH

MEMBERS

HAZEL MIXON
NINA MOORE
BETTY ANN MORGAN
JIMMY FRANCES NEWTON
SARA PERKINS
DOROTHY POOLE
ELOISE POWELL
THEONE ROBINSON
HENRIGENE SMITH
MAGGIE SWETMAN
OZELIA USHER
HARRIET WELCHEL
LOUISE WILLIAMS
ROSEMARY WYNN
RUBY DELL FLANDERS

NELL FLANDERS
MARY FIELDS
LETA GAY
WUDIE GAY
VIRGINIA GILDER
MARIE IVEY
EDNA JACKSON
BETTY JORDAN
VIVIAN JOHNSON
FAY JONES
MARIE LANIER
GERTRUDE LAWRENCE
NELLORENE MCCOLLUM
DORIS McGEHEE

OFFICERS

ALICE JO LANE	President
DOT POOLE	Vice-President
DOT ANDERSON	Secretary
MISS RUTH BOLTON	Sponsor



Council



Officers



BIRD CLUB

OFFICERS

JOHN BLANCHARD	President
CHES FAIRCLOTH	Vice-President
T. A. BACON	Secretary
CARL HUTCHINS	Program
GEORGE PARKER	Co-Chairman
MARIE PEARSON	Chaplain

MEMBERS

DAN CHAMBLESS
DORIS CORBIN
NORMA CORBIN
SHIRLEY CORBIN
OPHELIA DORMINY
JAMES JONES
PILCHER KEMP
GENEVA McDANIEL
MARY PAULK
THOMAS ROBINSON
THERA DELL ROUNTREE
OZELIA USHER
PATE WARREN
LOUISE WILLIAMS

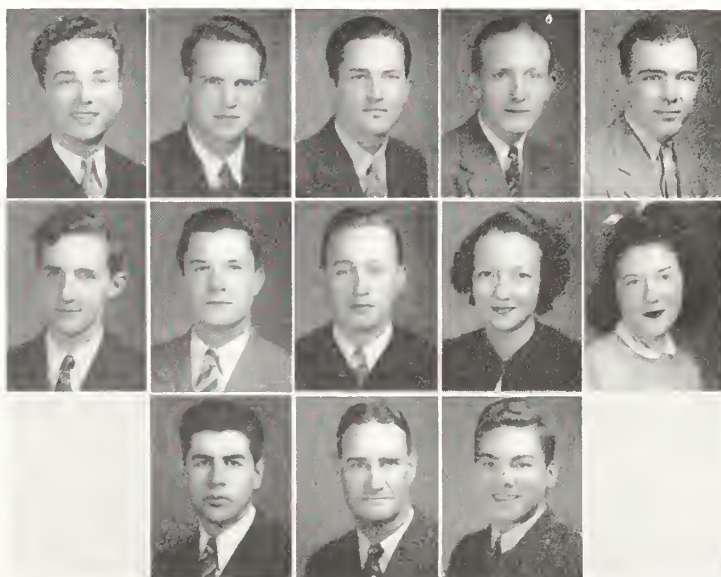
SCIENCE SEMINAR

OFFICERS

DAVID BOWMAN	Chairman
GEORGE PARKER	Co-Chairman
NANCY SALLEY	Secretary-Treasurer
MR. W. S. HANNER	Sponsor
MR. PAUL THOMPSON	Sponsor

MEMBERS

T. A. BACON	RUSSELL GREEN
STANLEY BOOTH	PILCHER KEMP
ROBERT CHISOLM	MARIE PEARSON
WAYNE CULBRETH	J. W. ZETTEROWER





FINE ARTS CLUB

MEMBERS

BETTY BAIRD
 GERALDINE BEASLEY
 STANLEY BOOTH
 SARA ALICE BRADLEY
 S. N. BROCK
 MARCUS BRUNER

MARY EVA BURCH
 RUTH CONE
 EMILY CROMLEY
 MERLE ENGLISH
 SARA FOREHAND

CATHERINE GAINEY
 JOYCE JONES
 KATHRYN JOYNER
 PILCHER KEMP
 JANE MATHIS
 BETTY McLEMORE

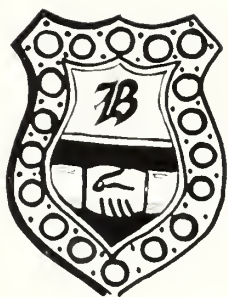


OFFICERS

FRED SMITH	President
EMOLYN RAINEY	Vice-President
FRANCES HUGHES	Secretary
MARY POWELL	Treasurer
ROGER McMILLAN	Sponsor
MR. LEON SMITH	Sponsor
MR. LORRAN LATHAM	Sponsor



BACHELORS CLUB



OFFICERS

ALTON ELLIS	President
CHARLES STANFIELD	Vice President
DAVID WATSON	Secretary
THERON ANGLIN	Treasurer
MISS RUTH BOLTON, MISS MARIE WOOD	Sponsors

History: Founded in 1928.

Colors: Green and White.

Motto: Beware of Women.

Flower: Bachelor Button.

Song: "My Buddy."

Purpose: The promotion of ideas, ideals, and a comradeship of high integrity.



First Row: Anglin, Wood, Stanfield. . . . Second Row: Cox, Ellis, Bolton, Wrinkle, Watson, Ingram, Hutchins, Najjar, Cartee, Rountree, Hurst, Bacon, Neville.

MEMBERS

THERON ANGLIN
T. A. BACON
DAVID BOWMAN
J. WILLARD CARTEE
BILLY COX
ALTON ELLIS
JOE HURST
CARL HUTCHINS

JOE INGRAM
EDDIE NAJJAR
GESMON NEVILLE
ROSS ROUNTREE
CHARLES STANFIELD
DAVID WATSON
HERMAN WRINKLE
TOM VANDIVER

PLEDGES 1940-41

ELLIOT BOSWELL
O'NEAL CAVE
WAYNE CULBRETH
LEON CULPEPPER
BILLY DeLOACH
JIMMY GUNTER

CHARLES McKINLEY
CLINTON OLIVER
JACK MORGAN
GEORGE MULLING
FITZHUGH PENN
GEORGE PAFFORD

BUDDY WINGATE



Anglin, Bowman, Ellis, Stanfield, Watson.



First Row: Stanfield, Kneece, Jenkins, Anglin, Alford, Hurst, Findley, Neville. . . . Second Row: Turk, Pennington, Booth, Hinely, Dunn, Hutchins, Wingate.

OFFICERS

JOHN DUNN President
 CARL HUTCHINS Vice-President
 MILTON FINDLEY Secretary

Colors: Red and Black.

BUGGER DAGGERS

MEMBERS

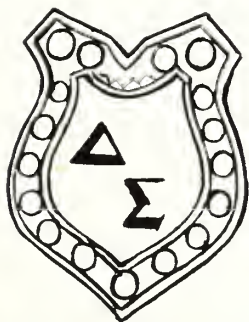
CHARLES ALFORD	THOMAS JENKINS
THERON ANGLIN	CHARLES KNEECE
STANLEY BOOTH	GESMON NEVILLE
JOHN DUNN	JAMES PARKER
MILTON FINDLEY	LINSEY PENNINGTON
WILLIE HUGH HINELY	CHARLES STANFIELD
JOE HURST	FLOYD TURK
CARL HUTCHINS	BUDDY WINGATE



Left to right: Dunn, Finley, Parker, Hutchins.



First Row: Adams, Anderson, R. Bacon, T. Bacon, B. Christie, R. Christie, Coleman. . . . Second Row: Curry, DeLoach, Gainey, Gate-wood, Grahl, Groover, Hall. . . . Third Row: Harrell, Marsh, D. Olliff, F. Olliff, Patterson, Ramsey, Robertson. . . . Fourth Row: Scar-boro, Smith, Turner, Vandiver, Waters, Zetterower.



DELTA SIGMA

History: Founded G. S. M. C., 1929.

Song: "Auld Lang Syne."

Colors: Blue and Gold.

Flower: Red Rose.



Front Row: Waters, Gainey, Zetterower. . .
Second Row: Blanchard, Coleman, Robertson, Olliff.

OFFICERS

J. W. ZETTEROWER	President
WILLIAM WATERS	Vice-President
G. C. COLEMAN	Secretary
HARRY ROBERTSON	Treasurer
JOHN BLANCHARD	Chaplain
DIGHT OLLIFF	Scribe
MR. DAMON TURNER	Sponsor
DR. R. J. H. DeLOACH	Sponsor
CATHERINE GAINEY	Student Sponsor

MEMBERS

CLAUDE ADAMS
EMERSON ANDERSON
RALPH BACON
T. A. BACON
JOHN BLANCHARD
JAMES BRYAN
BEN CHRISTIE
REN CHRISTIE
G. C. COLEMAN
THOMAS CURRY
REESE ELLISON
DUDLEY GATEWOOD
JOHN GRAHL
EDWIN GROOVER
JAMES HALL

MONROE HARRELL
ALBERT KEY
HUSMITH MARSH
ROBERT MORRIS
DIGHT OLLIFF
FRANK OLLIFF
HIRAM PATTERSON
BILL THOMAS RAMSEY
HARRY ROBERTSON
JIMMY SCARBORO
CHARLES SMITH
ROY LEE SMITH
TOM VANDIVER
WILLIAM WATERS
J. W. ZETTEROWER

IOTA PI NU

OFFICERS

JOHN KING	President
HERMAN WRINKLE	Vice-President
DAVID BOWMAN	Secretary
ROSS ROUNTREE	Treasurer
LEON CULPEPPER	Chaplain
CECIL OLMSTEAD	Historian
WAYNE CULBRETH	Sergeant-at-Arms
MR. GLYNN KITCHENS	Sponsor
MARY THOMAS PERRY	Student Sponsor

FRATRES IN FACULTATE

WILLARD CARTEE

ROY RABUN

Founded in 1931.

Colors: Scarlet and Emerald.

Flower: Poinsettia.

Song: "My Dear."



First Row: Bowman, Perry, King. . . Second Row: Culbreth, Culpeper, Olmstead, Rountree.



MEMBERS

DAVID BOWMAN
HOMER BLITCH
MARCUS BRUNER
O'NEAL CAVE
WAYNE CULBRETH

LEON CULPEPPER
BILLY DeLOACH
JAMES GUNTER
ROGER HOLLAND
JOE INGRAM

TOM JENKINS
ATHLEY JORDAN
JOHN KING
FAIN MARTIN
JACK MORGAN

GEORGE MULLING
JOE OGLESBY
CECIL OLMSTEAD
JOHN OLMSTEAD
GEORGE PAFFORD

ROSS ROUNTREE
SAM RUMPH
HAROLD WATERS
GENE WEATHERFORD
HERMAN WRINKLE

First Row: Bowman, Blitch, Bruner, Cartee, Cave, Culbreth, Culpeper. . . Second Row: DeLoach, Gunter, Holland, Ingram, Jenkins, Jordan, King. . . Third Row: Kitchens, Martin, Morgan, Mulling, Oglesby, Olmstead, Pafford. . . Fourth Row: Perry Rabun, Rountree, Rumph, Waters, Weatherford.





Seated: Gainey, Fries, Reppard, Foster, Matthews, Powell, Hughes, McLemore. . . . Standing: McMillan, Rountree.

PAN - HELLENIC COUNCIL

OFFICERS

CATHERINE GAINNEY	President
FRANCES HARRISON	Vice-President
MARGERITE MATTHEWS	Secretary
MARY POWELL	Treasurer
BETTIE McLEMORE	Scribe

Song: "Memories."

Colors: Pink and Blue.

Purpose: To promote closer cooperation among the sororities on the campus with the hope of providing a more comprehensive social program.

MEMBERS

CAROLYN FOSTER	FRANCES HUGHES	MARY POWELL
MARY FRIES	MARGUERITE MATTHEWS	OLIVE REPPARD
CATHERINE GAINNEY	BETTIE McLEMORE	DELL ROUNTREE
FRANCES HARRISON	ROGER McMILLAN	



First Row: Rountree, Fries, Williams, Keefe, Ellison. . . . Second Row: Odom, Lanier, Drennon, Perry, Joyner, Lamb, Foster.



Rountree, Fries, Foster, Lamb.

DELTA LAMBDA DELTA

History: Founded 1927.

Colors: Crimson and Royal Blue.

Flower: Rose.

Song: "Always."

Motto: A Good Time in a Good Way.

OFFICERS

CAROLYN FOSTER	President
THERA DELL ROUNTREE	Vice-President
MARY FRIES	Secretary-Treasurer
MADELYN LAMB	Chaplain
MR. AND MRS. R. J. NEIL	Sponsors
MR. AND MRS. MARION CARPENTER	Honorary Sponsors
"HONEY" CARPENTER	Mascot

MEMBERS

GERALDINE KEEFE

LOUISE PERRY

PLEDGES

MARY DRENON
KATHRYN ELLISON
KATHRYN JOYNER

JULIA ODOM
FAYE LANIER
WYNELLE WILLIAMS

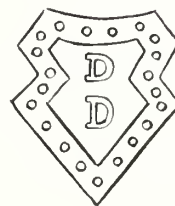




First Row: Barger, Elder, Foy, Gainey, Groover. . . . Second Row: Hanner, Hunt, Morgan, Perry, Perryman.
 . . . Third Row: Powell, Rowse, Salley, Waters, Wyatt.



We Won!



DUX DOMINA

OFFICERS

CATHERINE GAINNEY	President
MARY POWELL	Vice-President
MARY THOMAS PERRY	Treasurer
VIRGINIA PERRYMAN	Secretary
MR. AND MRS. W. S. HANNER	Sponsors

Motto: "To lead rather than to be led."

Colors: Gold and White.

Flower: Chrysanthemum.

Song: "Gettin' Sentimental."

PLEDGES

SYLVIA BARGERON
 HELEN ELDER
 MAXANN FOY
 ELOISE HUNT

BETTY ANNE MORGAN
 HELEN ROWSE
 NANCY JIM SALLEY
 EFFIELYN WATERS

EPICUREAN SORORITY

OFFICERS

FRANCES HUGHES	President
MARGUERITE MATTHEWS	Vice-President
FRANCES DEAL	Secretary
FRANCES BREEN	Treasurer
OUIDA WYATT	Chaplain
MR. AND MRS. BILL BOWEN	Sponsor
MISS "MEG" GUNTER	Sponsor

Motto: Eat, drink, and be merry for tomorrow
you may die.

Colors: Red and White. Song: "Stardust."

Flower: Carnation.

MEMBERS

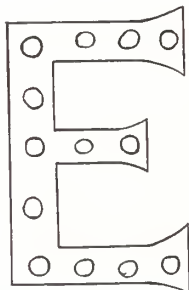
MARTHA WILMA SIMMONS	MIRIAM BRINSON
BILLIE TURNER	

PLEDGES

SARA ALICE BRADLEY	MAIDA GEIGER
GLADINE CULPEPPER	JANE SIMPSON
ELOUISE WYATT	



Bradley, Bowen, Breen, Brinson, Culpepper, Deal,
Geiger, Gunter, Hughes, Matthews, Simpson,
Simmons, Turner, E. Wyatt, O. Wyatt.



LAMBDA THETA CHI

OFFICERS

FRANCES HARRISON President
 BETTIE McLEMORE Vice-President
 EULA BETH JONES Secretary
 SARA REID BOWEN Treasurer
 EMOLYN RAINEY Chaplain

Motto: To strive, to seek, to find, and
 not to yield.

Colors: Green and Gold.

Song: "I'll Be Faithful."

Flower: Sweetheart Roses.

MEMBERS

DOROTHY ANDERSON
 ALICE HODGES
 CAROLYN MORRIS
 MARIE PEARSON
 ELLA SUE TRAYNHAM
 ETHELDA WEITMAN
 LYNETTE YANDLE

PLEDGES

INEZ BARBER
 EMILY CROMLEY
 EVANGELINE HARRELL
 LUTRELLE SHORT



Anderson, Barber, Bowen, Cromley, Harrell, Harrison, Hodges, Jones, McLe-
 more, Morris, Pearson, Rainey, Short, Traynham, Weitman, Yandle.





Reppard, Hartley, Heidt, McMillan.

SIGMA GAMMA

OFFICERS

OLIVE REPPARD	President
ROGER McMILLAN	Vice-President
LORENE HEIDT	Secretary
AZILE HARTLEY	Treasurer
MR. AND MRS. L. W. JOHNSON	Sponsors

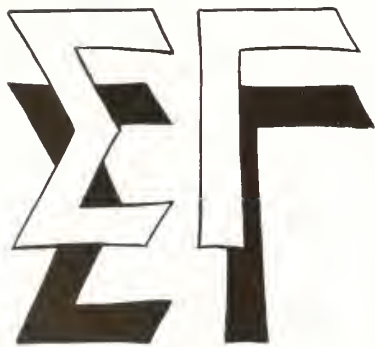
Motto: To live for others rather than ourselves.
 Colors: Green and White.
 Flower: Gardenia.
 Song: "Night and Day."

MEMBERS

LORENE HEIDT	JOY BOWDEN	ROGER McMILLAN
SARA HOWELL	ANN CULLENS	RUTH MURPHY
RUTH KAMMERER	ALICE HARRIS	OLIVE REPPARD
ALICE JO LANE	AZILE HARTLEY	DONNA THIGPEN
MARY KATHRYN THOMAS		DORIS TONEY

PLEDGES

MIRIAM BRYANT	JOYCE HENDRIX	MARY STEPHENSON
HAZEL COBB	REBECCA HICKS	LOUISE TOWNSEND
KATHRYN COOKSIE	DAISY MAE LEAPHART	LILLIAN WARNER
TEENA GRESHAM	ELIZABETH SMITH	



Front Row: Cobb, Thomas, Murphy, Smith, Culleens, Hartley, Bryant, Warner, Gresham, Howell. . . . Back Row: Heidt, Bowden, Leaphart, Reppard, Toney, Thigpen, Harris, Townsend, McMillan.



First Row: Alderman, Cone, Freeman, Groover, Harrison, Hartley. . . . Second Row: Heidt, Kammerer, Murphy, Parrish, Russell, Toney, Ward.

X CLUB

OFFICERS

FAY ALDERMAN	President
BURDELLE HARRISON	Vice-President
EDWENA PARRISH	Secretary
MISS MARION GROOVER	Sponsor
MISS BERTHA FREEMAN	Sponsor

Motto: Happiness is not perfected until it is shared.

Colors: Yellow and Green.

Flower: Daffodil.

MEMBERS

FAY ALDERMAN
RUTH CONE
BURDELLE HARRISON
AZILE HARTLEY
LORENE HEIDT

RUTH KAMMERER
RUTH MURPHY
EDWENA PARRISH
DORIS TONEY
HILDA WARD

PLEDGES

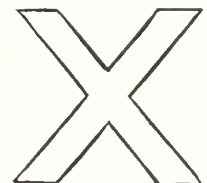
JANE IRVIN
JUNE IRVIN

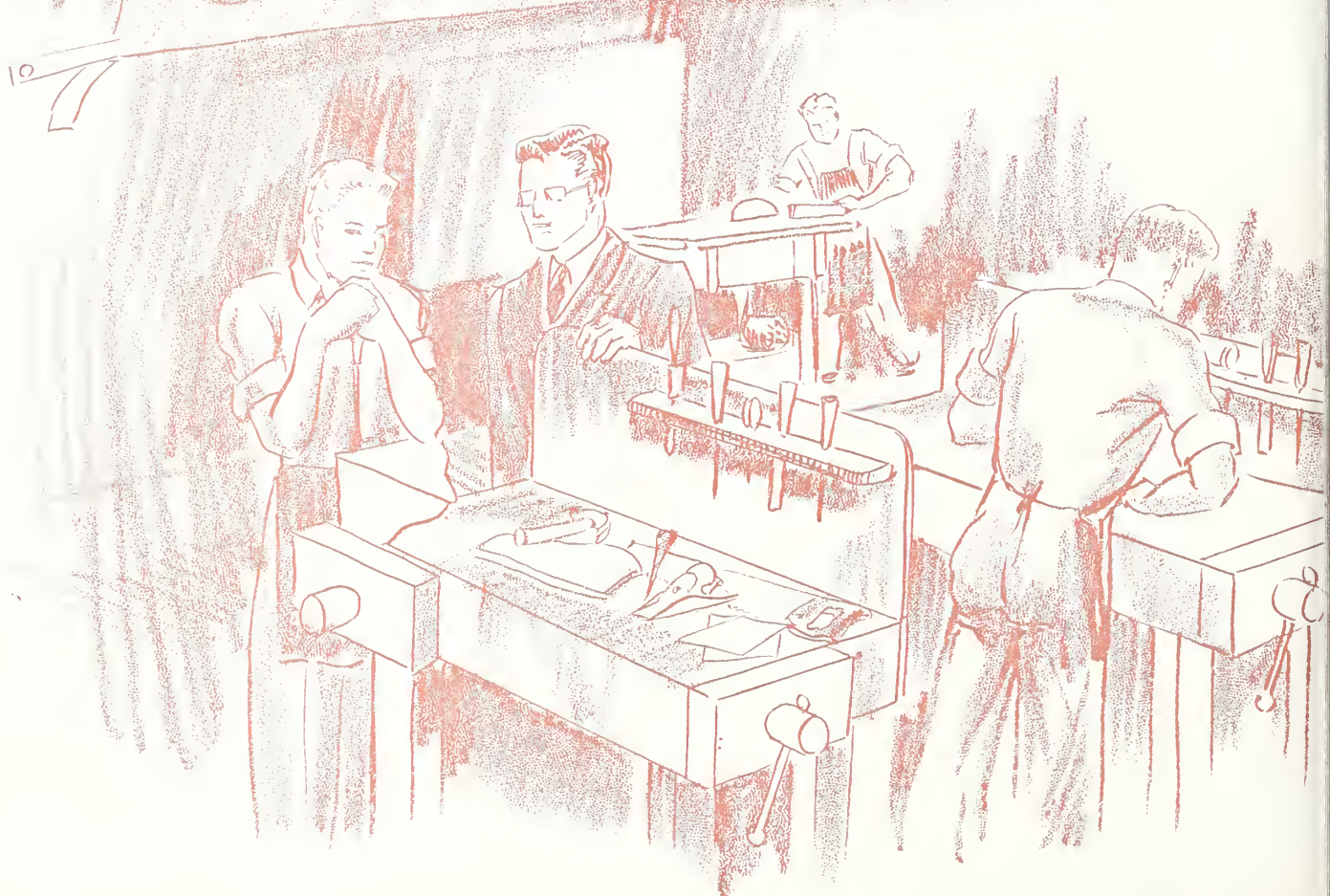
DOROTHY GARNER
ABBIE MANN

MYRA NEWTON

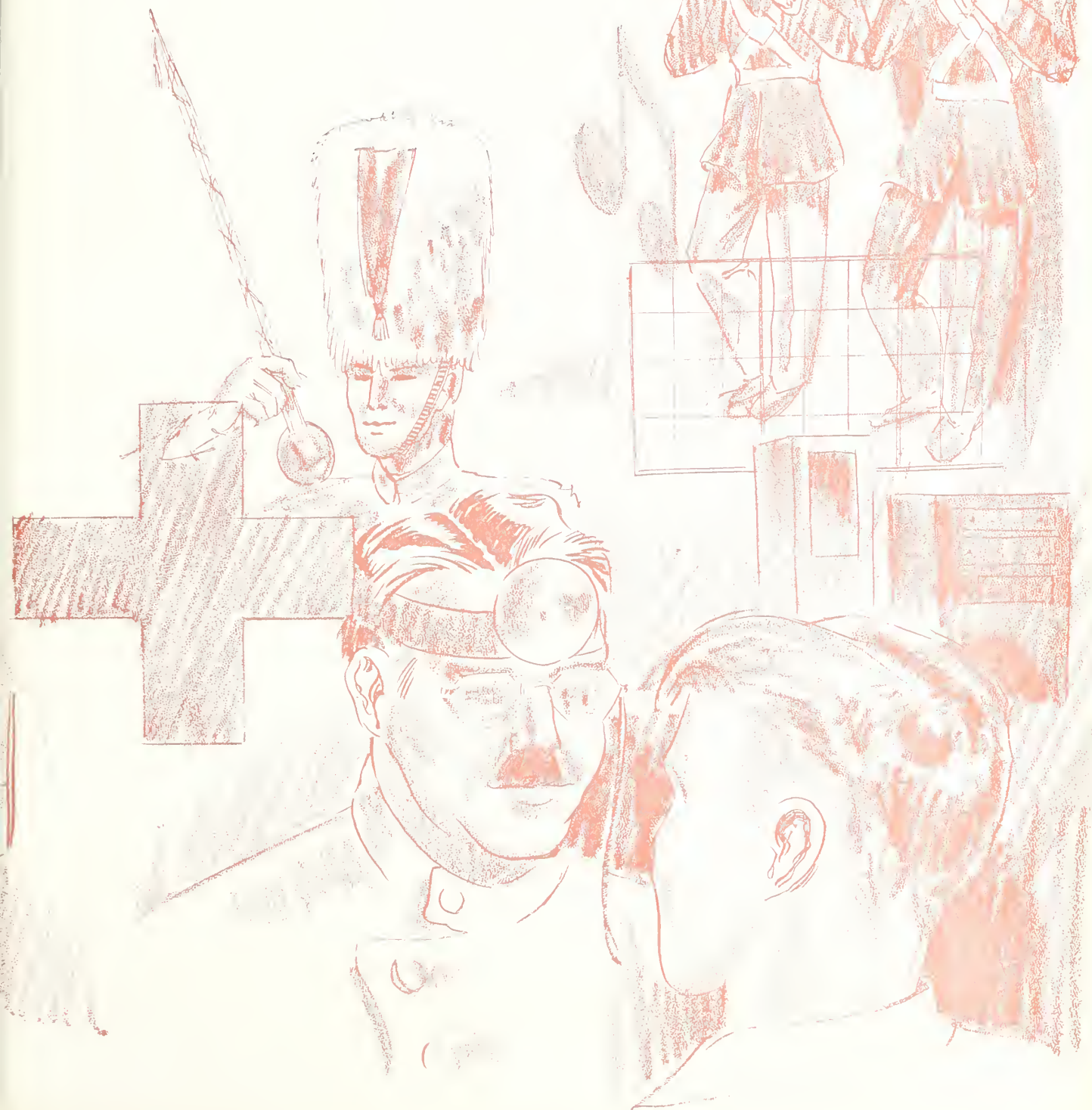


Front Row: Ward, Parrish, Cone, Alderman. . . . Back Row: Toney, Heidt, Murphy, Hartley.





In the summer of 1929 the name was changed by the legislature to South Georgia Teachers College. In 1931 Mechanics became Industrial Arts, and Home-making became Home Economics. It was also during this period that the curriculum was enlarged to permit a four-year course embracing music, English, science, mathematics, commerce, and social science. Among the many buildings added were the Laboratory School, the Health Cottage, and the Little Store.





F

E

A



T U R E S



BEAUTY SECTION

From photographs and snapshots Editor Edwin E. Kintner of the **Log** of the United States Naval Academy and his staff chose the ten most beautiful girls on the Georgia Teachers College campus. Fifteen girls were chosen by a student poll and Mr. Kintner and his staff eliminated five. In a letter which accompanied this picture of the judging, he said:

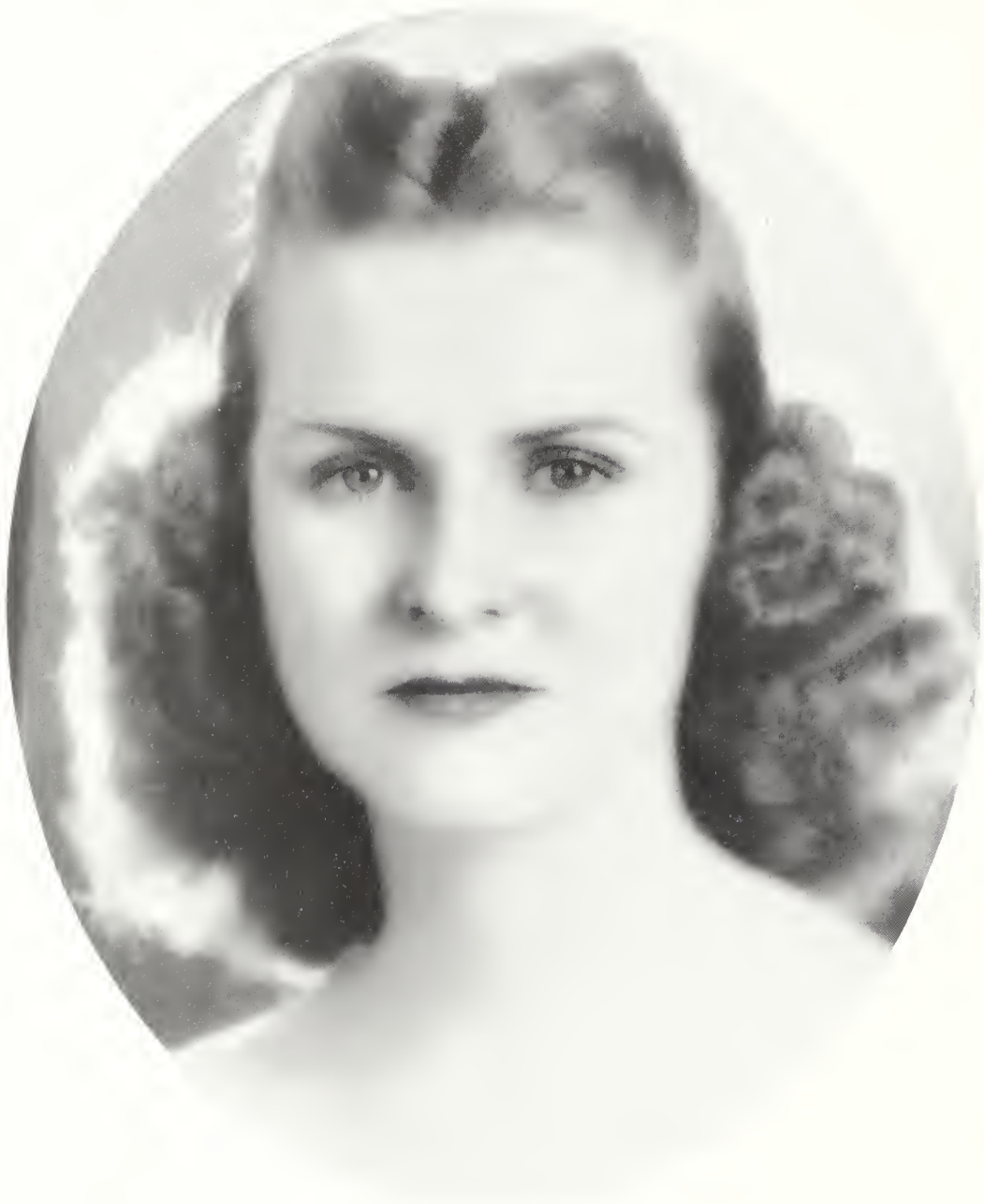
"Number 7 (Carolyn Morris) was chosen winner because she seems to have to a marked degree the characteristics which midshipmen like about a girl—vivacity, sincerity, intelligence, charm and poise. In short, she is the kind of girl one likes to spend an Academy weekend with, because a weekend with a girl like that never gets dull.

"The staff selected Number 13 (Frances Hughes) runner-up because of her poise. The snapshot shows that she has perfect posture, something every midshipman admires in a woman, and something which bespeaks self-possession and character. One expects her to be a leader in campus activities—the kind of girl who is always doing something and doing it efficiently."

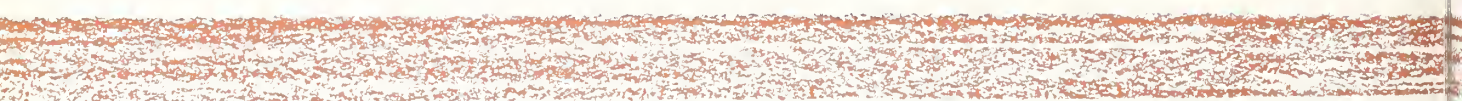
The other eight "Beauties" are given in alphabetical order.



CAROLYN MORRIS



FRANCES HUGHES





SARA ALICE BRADLEY



MAIDA GEIGER



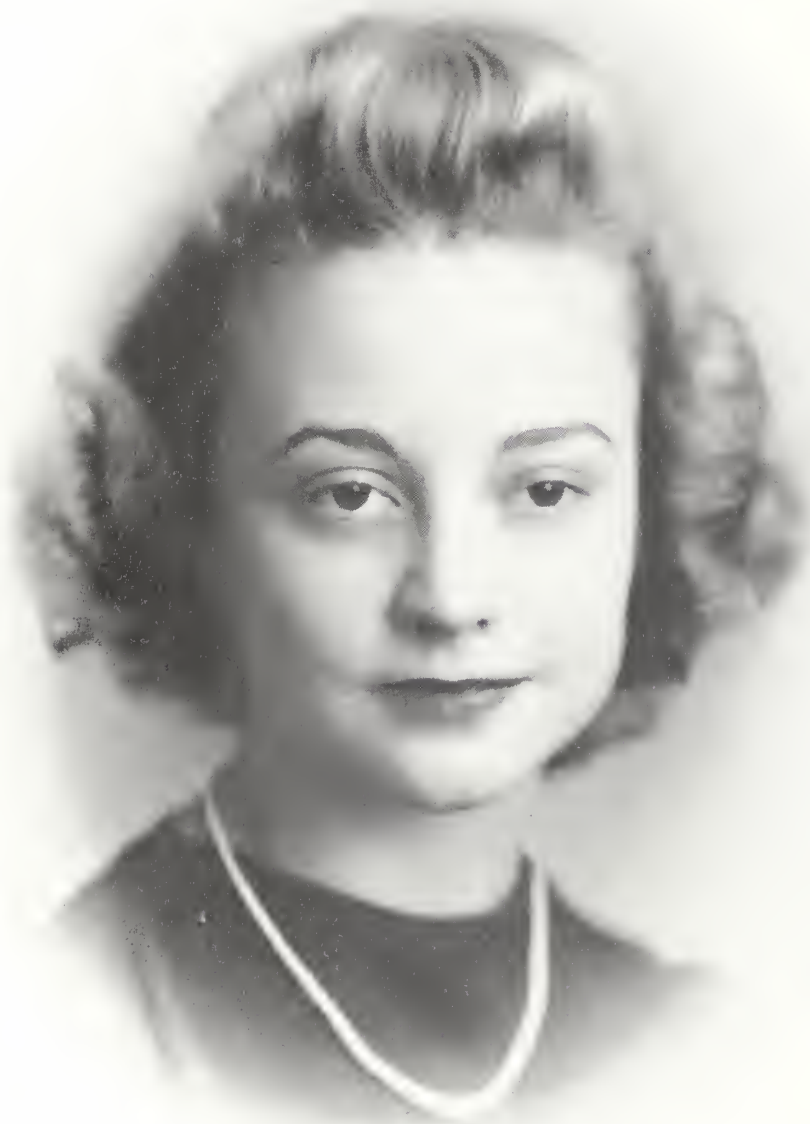
JUNE and JANE IRVIN



EULA BETH JONES



MARY THOMAS PERRY



VIRGINIA PERRYMAN



LEILA WYATT



UHLMA WYNN ZITTROUER



NIGHT LIFE AT TEACHERS COLLEGE

The girl's Break, the girls' break . . . the dining hall supplement . . . senior studying . . . freshman studying or Still Life . . . East Hall at midnight . . . What the Well-dressed T. C. Girls Wear for Evening . . . The South American Way (the North American way).

M A Y C



OLIVE REPPARD
Queen

CATHERINE GAINNEY
Maid of Honor

MAY COURT

OLIVE REPPARD Queen
 CATHERINE GAINNEY Main of Honor
 FRANCES BREEN Senior Attendant
 MIRIAM BRINSON Senior Attendant
 FRANCES HUGHES Senior Attendant
 EULA BETH JONES Junior Attendant
 MARGUERITE MATTHEWS . . . Junior Attendant
 ELLA SUE TRAYNHAM . . . Junior Attendant
 MARY ADELE DRENON . . . Sophomore Attendant
 CAROLYN MORRIS . . . Sophomore Attendant
 SARA ALICE BRADLEY . . . Freshman Attendant
 VIRGINIA PERRYMAN . . . Freshman Attendant
 WAYNE SMILEY Crown Bearer

FLOWER GIRLS

SEABORN COOPER SMITH
 GENEVIEVE GUARDIA
 HONEY JO HARVILL
 MARY RUTH PULLIAM
 SEABORN COOPER SMITH
 MARION ASHBY SMITH

"Windmills"
 "Put Your Little Foot"



O U R T ☆

"OF THEE I SING"

- I. Prologue—Music by Concert Band Miniature as a cross section of America, the melting pot of the world, gathers in the park to attend the crowning of the May Queen.
- II. Processional—Court and Queen.
- III. The College Chorus presents "Ballad for Americans."
- IV. The crowd, representing different nationalities but true Americans all enter into the spirit of the occasion and entertain the May Queen with a varied program.
 1. Singing Games
 2. Irish Dances
 - a. Rye Waltz
 - b. Kerry Dance
 3. Dances of Finland
 - a. Skvaller Ulla
 - b. Finnish Schottische
 4. American Country Dance
 - a. Oh, Susanna
 - b. Hinky Dinky Parle Voo
 - c. The Virginia Reel
 5. Dances from Holland
 - a. Bleking
 - b. Dutch Couples
 6. Hungarian Dances
 - a. Csebogar
 - b. Csardas
 7. American Folk Dances
 - a. Little Brown Jug
 - b. Put Your Little Foot
 - c. Paw Paw Patch
 8. In Mood with the Gypsies
 9. Tin Soldiers at Play—Drill Time
 10. Winding the May Poles
- V. Recessional.



On Parade



Court





CAMERA STUDIES

Any luck, Leila? . . . Homecoming parade . . . The Three Stooges, Larry, Curly, and Moe . . . Just before the battle, Mamie . . . Evidently we missed that book, but we like it . . . Mr. Harris called this a Band Trip . . . Stomping at the Savoy???? . . . Boiled eggs, cue balls, or just freshmen????





THROBS

Something new in fenders . . .
 "My Dear" . . . Diminutive
 dynamite . . . Double Trouble
 . . . Where is Cecil, Frances?
 . . . That smile could mean
 only one thing—Jay.





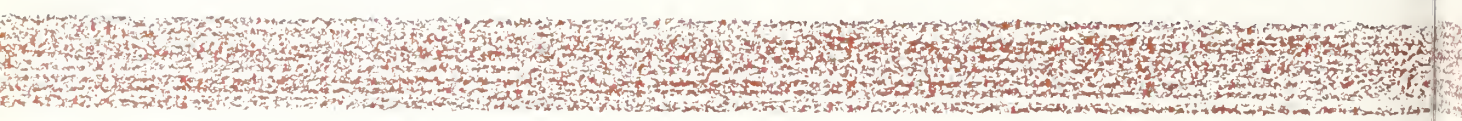
With the increase in size and range of the school, the name was changed in 1939 to Georgia Teachers College. With the new name came Speech, Aeronautics, and Violin, the Laboratory High School, Lewis Hall, and the Library. Today, Georgia Teachers College is recognized as one of the foremost teacher-training institutions in the South. Time Marches On!





Georgia Teachers College hit a new high this year by expanding their sports program. This was visibly aided by the new lighted field and new intramural activities.

A T H L





E T I C S

COACHES



COACH B. L. SMITH

Due to the work of the staff of the Health and Physical Education Department at Georgia Teachers College, the program has advanced far toward an all-school participation. Head of the division is Mr. B. L. Smith; under him are Miss Fay Hill, Mr. Glenn Kitchens, Mrs. Bill Bowen and Miss "Meg" Gunter.



Hill, Kitchens, Bowen, and Gunter.

OFFICERS

FRANCES HUGHES
President
CATHERINE GAINNEY
Vice-President
ELIZABETH McNALLY
Secretary-Treasurer
EMOLYN RAINEY
Publicity
FAYE HILL
Sponsor
"MEG" GUNTER
Sponsor
'HONEY' BOWEN
Sponsor
FRANCES BREEN
Basketball



First Row: T. B., Gainey, McNalley, Emolyn. . . . Second Row: Honey, Meg, Miss Hill, Froggie.

W. A. A. COUNCIL



First Row: Cato, Mary, Azile, Beth. . . . Second Row: Joyce, Virginia Lee, Mug, Nellie.

ELIZABETH CATO
Baseball
MARY FRIES
Swimming
AZILE HARTLEY
Speedball
EULA BETH JONES
Dancing
JOYCE JONES
Dancing
VIRGINIA LEE MARTIN
Volley Ball
MARGUERITE MATTHEWS
Tennis
NELLIE McDANIAL
Individual Sports

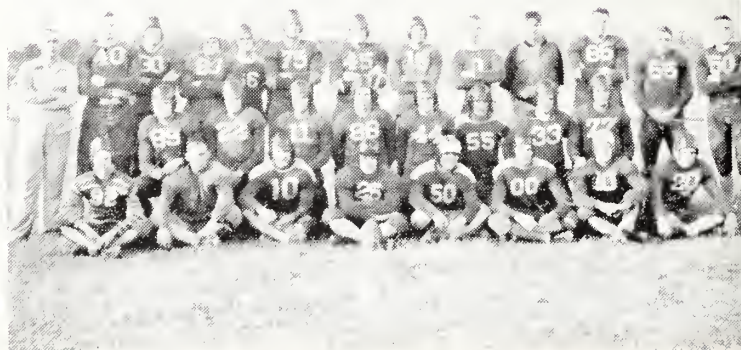
FOOTBALL



Top Row: Morgan, Mize, Pafford, Dunn, Paschal. . . Bottom Row: Horne, Rountree, Hall, Cave, Ellison.

FIRST TEAM

PASCHAL	End
HORNE	End
PAFFORD	Tackle
MIZE	Tackle
DUNN	Guard
DUNN	Guard
MORGAN	Center
ROUNTREE	Back
CAVE	Back
ELLISON	Back
HALL	Back



SCHEDULE

Opponent	Date	We	They
1-24 Erskine	September 20	0	19
South Georgia	October 5	7	19
Fort Benning	October 12	17	13
Alabama Teachers	October 19	0	14
Tampa	October 25	14	66
Middle Georgia	November 9	14	6
U. S. Navy	November 16	6	46
Armstrong	November 28	43	0



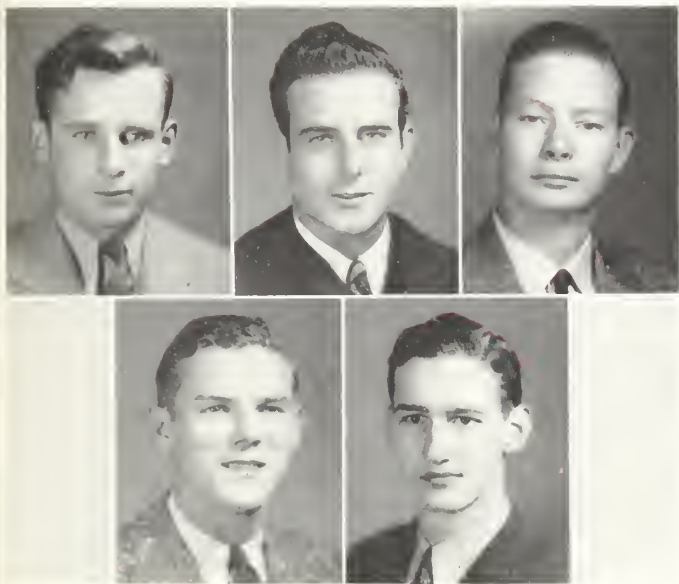
A punt in the Alabama Teachers' game.



Top Row: Hall, Enlowe, Paschal, Brown, Pafford, Ramsey, Anderson, Cave. . . . Bottom Row: B. Christie, R. Christie, Culbreth, Warren, Ahl, Pennington.

BASKETBALL

With very few of last year's squad back on the floor Coach Smith turned the new boys into a team that belied its experience. Out of a total of thirteen games the Tide won seven. Throughout the season the team showed a spirit that helped win many of the games.



Top Row: Anderson, Pafford, Paschal. . . . Bot-
tom Row: Ramsey, McKenna.

Overtime in the
Newberry game.



THE SCHEDULE

Wingate . . .	41—Teachers . . .	50
Celtics . . .	57—Teachers . . .	51
Cochran . . .	44—Teachers . . .	49
House of David .	46—Teachers . . .	49
Newberry . . .	40—Teachers . . .	46
Augusta Jr. College	25—Teachers . . .	23
J. E. A. . . .	46—Teachers . . .	44
Cochran . . .	60—Teachers . . .	32
Coll. of Charleston	51—Teachers . . .	42
Erskine . . .	32—Teachers . . .	33
Marines . . .	30—Teachers . . .	37
J. E. A. . . .	32—Teachers . . .	53
Mercer . . .	51—Teachers . . .	43

WINNING TEAMS

The Delta Sigma fraternity won the touch football intramural. Members of the team were Groover, Zetterower, Marsh, Coleman, Bryant, Smith, Olliff, Waters, and Blanchard.

In a close basketball tournament the Rough House team won the pennant. Members are, Cheshire, Williams, Fleming, Bell, and Groover.

New in the intramural program this year was boxing. Pictured winners are Bryant, DeLoach, Morris, and Harrison. Not pictured are Hall, King, and Scarboro.

Track was another innovation in the intramural program.

I N T R A - M U R A L S



CIVIL AERONAUTICS FLYING SQUAD

MEMBERS

BILL ALDERMAN	BYRON LANIER
KNAPP BODDIFORD	PETE PARRISH
BOB BRYAN	DAYMOND TURNER
JONES LANE	FLOYD WARDLAW
WILLIAM WATERS	

CAPT. W. S. ENSLOW
Instructor

MR. E. G. PIGG
Co-ordinator



Left to Right: Enslow, Parrish, Lane, Wardlaw, Lanier.



Left to Right: Wardlaw, Enslow, Waters, Lanier, Lane.

PLEDGE DOINGS



Dux pledges go fishing . . . Heap much Indians—with reservations . . . Whom do
 you see, Sara Alice? . . . The "nose" have it . . . Bachelor maids . . . Time to
 retire.

HERE - 'N - THERE



The winner in the Homecoming Parade . . .
 The Freshmen get together . . . Hi-yo, Stinky
 —away! Down the field for G. T. C. . . .
 Quick-action delayed bombs . . . P. S. They
 didn't get it . . . Fraternizing on the campus
 . . . Maybe the wind was blowing . . . The
 winner again—from a different angle.





A D V E R T I S



S E M E N T S

Congratulations

—to the Staff of the 1941 Reflector for an outstanding edition of the Georgia Teachers College yearbook. In this volume you have captured many reflections of your life at the Teachers College and set them down indelibly for the years to come.

—to the business men of Statesboro for taking an active part in making this book possible through their advertising.

—to the students of the Teachers College for recognizing the values they may receive in patronizing the advertisers of the 1941 Reflector who represent the leading businesses of the community and are loyal patrons and boosters of their college.

Students! Faculty! Read these "ads".
Trade in Statesboro, in the heart of Bulloch County . . .

"Where Nature Smiles

and Progress Has the Right-of-Way"

STATESBORO

CHAMBER OF COMMERCE



ALL PORTRAITS

IN THIS BOOK MADE BY

GASPAR-WARE

Studios

30-32 FIFTH STREET, N. W.

**ATLANTA
GEORGIA**



OFFICIAL PHOTOGRAPHERS FOR

Georgia Teachers College

© ALL REFLECTOR negatives are held in our files for several years and portraits can be obtained at any time. Write us for information and special price list.

Photography

by

GASPAR-WARE



WHEN YOU WANT BETTER
DRY CLEANING

Send It To

THACKSTON'S

HOBSON DuBOSE
Proprietor

Phone **18** Phone

A College Representative

In Every Dormitory

Serving G. T. C. With Fresh
FRUITS AND VEGETABLES

CHARLES BRYANT

Lowest Prices Always

LANNIE F. SIMMONS

AUTOMOBILES - FERTILIZER

PATRONIZE OUR ADVERTISERS

CHAS. E. CONE

R. M. BENSON

**CHARLES E. CONE
REALTY COMPANY**

Established 1915

Where T. C. Banquets are a Tradition

JAECKEL HOTEL

Your Comfort . . . Our Pleasure



**WALTER ALDRED
COMPANY**



Everything in Building Supplies

PHONE 224



THE
BLUE TIDE
ON THE CAMPUS

“Where Boy Meets Girl”

PATRONIZE OUR ADVERTISERS

COLLEGE WEAR FOR MEN



DONALDSON-SMITH
CLOTHING COMPANY

CLOTHES FOR THE COLLEGE MISS

The

FASHION

Shop

SMART LADIES WEAR



H. P. JONES

Distributor

G U L F
REFINING COMPANY
Statesboro

ASK FOR LANCE
TOASTCHEE



WITH YOUR
FAVORITE
DRINK

LANCE, INC.
H. C. MARTIN, Representative

SENIOR RINGS

for

any year can be furnished by

HERFF-JONES CO.

H. S. CANFIELD

1560 N. Decatur Rd. Atlanta, Ga.

"We have a complete graduation
service"

for

Colleges and High Schools

MEDALS — CUPS — TROPHIES

Invitations — Cards

Diplomas

Caps and Gowns

PATRONIZE OUR ADVERTISERS

REFLECTIONS

1941

1961

Will your station in life in 1961 reflect the proper preparation in your earlier years?

Will your financial position in 1961 reflect your strict adherence to the principles of thrift and economy in 1941 and subsequent years?

Consider these questions while you are young.

SEA ISLAND BANK

SAFETY — COURTESY — SERVICE

MEMBER FEDERAL DEPOSIT INSURANCE CORP.

Meet Your Friends at the

COLLEGE PHARMACY

"Where the Crowds Go"

Phone
414

PROMPT - COURTEOUS SERVICE

Phone
416

ORANGEADE • CHOCOLATE MILK

SUPERIOR
ANITARY
ATISFACTORY

WEST-SIDE DAIRY

CREAM-LINED PRODUCTS

GEORGIA

MOTOR FINANCE COMPANY

and

STATESBORO INSURANCE

AGENCY

PATRONIZE OUR ADVERTISERS

LUMBER THAT'S

SAWED RIGHT

DRIED RIGHT

DRESSED RIGHT

F. W. DARBY

LUMBER COMPANY

PHONE 380

DON'T SAY BREAD... SAY

H O L S U M

DERST BAKING COMPANY

SAVANNAH, GEORGIA

"Once a Trial . . .

. . . Always a Customer"

W A T E R S
BARBER SHOP

— Under the Bank

The

BULLOCH DRUG
COMPANY

DR. J. M. NORRIS, Proprietor

Prescriptions a Specialty

PATRONIZE OUR ADVERTISERS

BETWEEN CLASSES FOR DELICIOUS

Coca-Cola

IN BOTTLES

It's The Refreshing Thing To Do

STATESBORO COCA-COLA BOTTLING COMPANY
STATESBORO

Conservative Management - Courteous Service

"BIG ENOUGH TO SERVE YOU — SMALL ENOUGH TO KNOW YOU"

BULLOCH COUNTY BANK

MEMBER FEDERAL DEPOSIT INSURANCE CORPORATION

R. J. KENNEDY
President

J. L. MATTHEWS
Vice-President

W. L. DEJARNETTE
Cashier

PATRONIZE OUR ADVERTISERS

E. A. SMITH
GRAIN COMPANY

•

Everything in
BUILDERS SUPPLIES

and

FERTILIZERS

PHONE 171

SERVING YOU

THE MEAT YOU EAT

BUTLER
PROVISION
COMPANY

•

Wholesale

BEEF PORK
SAUSAGE AND PROVISIONS

SAVANNAH

QUALITY MILLWORK

HOWARD LUMBER COMPANY

PHONE 353

PATRONIZE OUR ADVERTISERS

WEEKLY LIVESTOCK SALES

BULLOCH STOCK YARD

O. L. McLEMORE, Mgr.

Phone 324

INSURE TODAY!

GROVER & JOHNSTON INSURANCE AGENCY

PHONE 310

A COMPLETE LINE OF COLLEGE CLOTHES

Statesboro's Largest Department Store

H. MINKOVITZ & SONS

BLITCH RADIO SERVICE

RCA RADIOS

GENERAL ELECTRIC APPLIANCES

Radio Service on All Makes

Telephone 147

43 E. Main St.

Headquarters for Student Needs

UNITED

5c TO \$5.00 STORES

Jimmie Allen, Manager

ALWAYS A GOOD SHOW

at the

**GEORGIA
THEATER**

AND

**STATE
THEATER**

PATRONIZE OUR ADVERTISERS

GEORGIA POWER

COMPANY

"A Citizen Wherever We Serve"

STATESBORO

PROVISION COMPANY

Manufacturers and Dealers

Pure Crystal Ice

COLD STORAGE

Our Compliments

JOHN EVERETT COMPANY

QUALITY FOOD MERCHANTS

26 - PHONES - 29

Daily Delivery to the College

You'll Say First Because It's Finest

CHEVROLET

SALES **FRANKLIN CHEVROLET COMPANY** SERVICE

Pecans Bought and Sold

W. C. AKINS & SON

HARDWARE and GROCERY

See Us Before You Buy!

Gifts That Last

GRIMES
Jewelry Company

Diamonds - Watches - Silverware

Glassware - China

PATRONIZE OUR ADVERTISERS

McLELLAN'S

A Variety

of

5c and 10c Items to Fit Your Needs

LANIER'S MORTUARY

FUNERAL DIRECTORS

Ambulance Service - Lady Assistant

340
Day

PHONE

415
Night

It's Smart to be Thrifty . . . That's Why Students of America Look to

PENNEY'S

J. C. PENNEY COMPANY, INC.

SAVANNAH

GEORGIA

STATESBORO

BUGGY & WAGON COMPANY

HARDWARE - FARM IMPLEMENTS - GLASS - DUCO PAINTS

PIPE - PIPE FITTINGS - MULES - HARNESS

Up-to-Date College Wear

BRADY'S
DEPARTMENT STORE

"We're Home Folks"

"If It's Seed, If It's Feed, We Have It"

BRADLEY & CONE
SEED AND FEED CO.

GOOD GERMINATING SEED - FRESH FEED

STATESBORO

PATRONIZE OUR ADVERTISERS

M. E. ALDERMAN
ROOFING COMPANY

BUILDING MATERIALS

DOORS - WINDOWS - HARDWARE

THE STATESBORO
GROCERY COMPANY

"WHOLESALE GROCERS"

When You Want Better Ice Cream

SANCKEN'S

ICE CREAM COMPANY

AUGUSTA, GEORGIA

ORKIN EXTERMINATING CO., INC:

PEST
CONTROL
SERVICE



TERMITE
CONTROL

PHONE 6444

SAVANNAH

Our Personal Care Is Your
Guarantee of

Expert Cleaning

**STATESBORO
DRY CLEANERS**

HARRY BRUNSON, Proprietor

We Appreciate Your Business
FRUITS AND VEGETABLES

HUTTO BROTHERS

Building a New Business on
Strictly Fresh Produce, Promptly
Delivered at Lowest Prices

YOUR HOME NEWSPAPER

BULLOCH TIMES



S. W. LEWIS, INC.

USE GAS...THE
MODERN WAY

**CENTRAL GEORGIA
GAS COMPANY**

Cooking . Heating . Refrigerating
FLORENCE RANGES


HINTON BOOTH

Watch the College Grow

A M O C O

FILL UP AT THE BLUE TIDE PUMP

A. B. McDOUGALD
AGENT, AMERICAN OIL COMPANY



★ THE MARK THAT
IDENTIFIES THE SOUTH'S
FINEST YEARBOOKS

PHOTO-PROCESS ENGRAVING CO.

115 - 119 LUCKIE STREET ★ ATLANTA GEORGIA



SUCCESSFUL ANNUALS

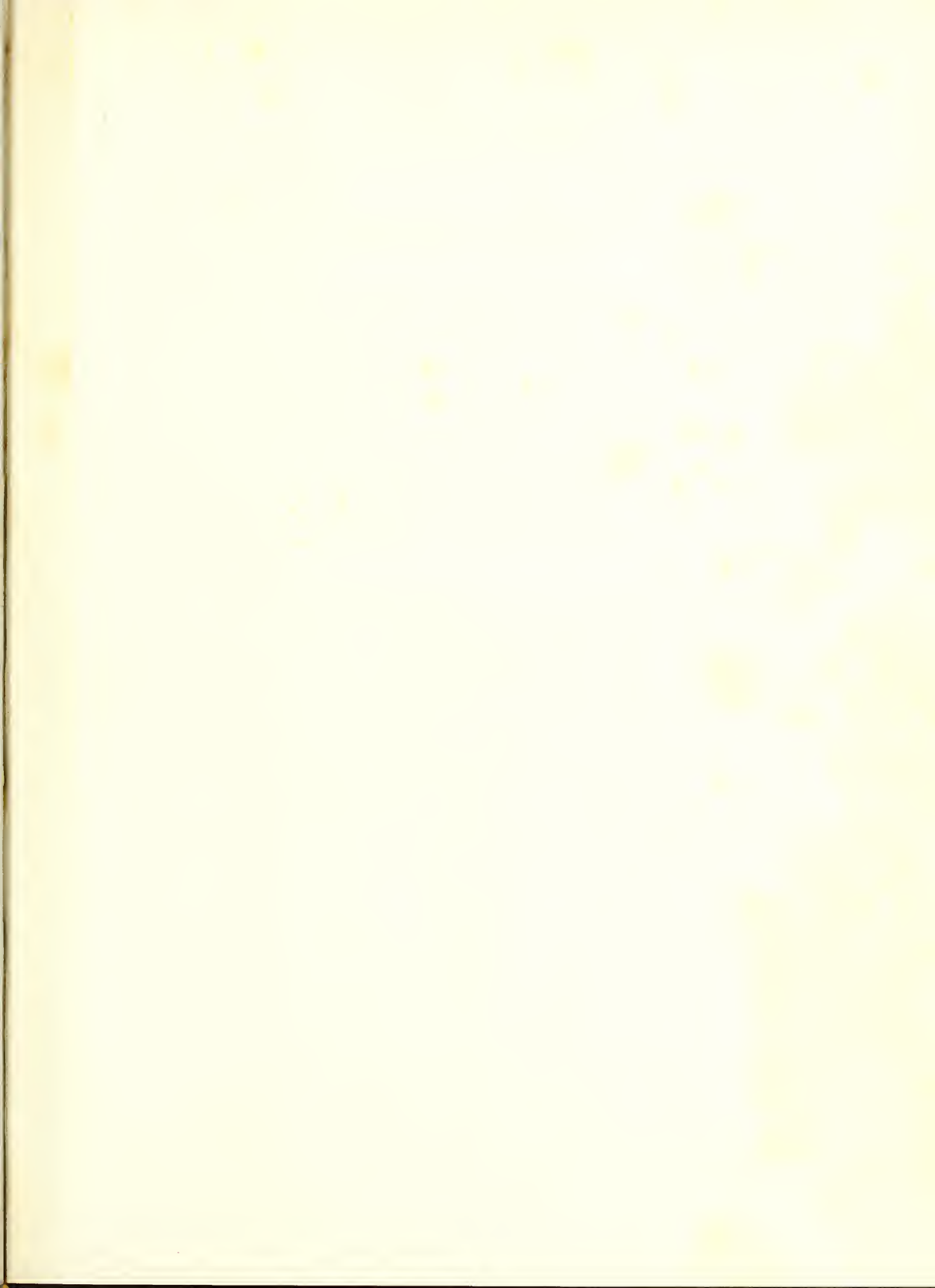
Require the services of experienced and expert craftsmen, trained in every detail of the processes of creating • planning layout and design • typesetting • printing lithographing and binding ... Throughout half a century this company has pioneered in the production of the highest type of printing ... Our services include a special college annual sales and service organization ... Abundant equipment • modern and complete ... Prices representing maximum in value



FOOTE & DAVIES

PRINTING • LITHOGRAPHING • ENGRAVING

ATLANTA



RESERVE

LH

1

.G43

R4

1941

ZACH S. HENDERSON LIBRARY



0 2001 0407689 4

FOR REFERENCE

NOT TO BE TAKEN FROM THIS ROOM

