

Fall 2010

Fall 2010 AASU Data Digest

Armstrong State University

Follow this and additional works at: <https://digitalcommons.georgiasouthern.edu/armstrong-data-digests>

Recommended Citation

Armstrong State University, "Fall 2010 AASU Data Digest" (2010). *Armstrong Data Digests*. 14.
<https://digitalcommons.georgiasouthern.edu/armstrong-data-digests/14>

This other is brought to you for free and open access by the Armstrong Office of Institutional Research at Digital Commons@Georgia Southern. It has been accepted for inclusion in Armstrong Data Digests by an authorized administrator of Digital Commons@Georgia Southern. For more information, please contact digitalcommons@georgiasouthern.edu.



Armstrong Atlantic State University

Fall 2010 Data Digest

Published by the Office of Institutional Research
912.344.3235
www.ir.armstrong.edu



Table of Contents

At A Glance

Armstrong at a Glance	1
Five Year Undergraduate & Graduate Enrollment Trends	3

Enrollment

Undergraduate Headcount Enrollment	4
Graduate Headcount Enrollment	5
Undergraduate Enrollment by FT/PT Status	6
Graduate Enrollment by FT/PT Status	7
Undergraduate Enrollment by Ethnic Group	8
Graduate Enrollment by Ethnic Group	9
Undergraduate Enrollment by County of Origin	10
Graduate Enrollment by County of Origin	12
Learning Support Enrollment	14

Student Credit Hours

Student Credit Hours by College and University	15
Total Student Credit Hours	16
Breakdown of University Credit Hour Comparison	17
Departmental Productivity Ratios	18

Lecture Section Size

Lecture Sections by Level	19
---------------------------	----

Armstrong Atlantic At A Glance

	<u>Undergraduates</u>	<u>Graduates</u>	<u>Overall</u> <u>Total</u>
Enrollment, Fall 2010	6,918	764	7,682
Enrollment, Fall 2009	6,612	926	7,538
Percent Change in Enrollment	4.6%	-17.5%	1.9%
Percent Full-Time*	71.7%	40.8%	68.4%
Percent Part-Time*	28.3%	59.2%	31.6%
Attempted Student Credit Hours, Fall 2010			87,947
Attempted Student Credit Hours, Fall 2009			85,507
Percent Change in Hours			2.9%
FTE, Fall 2010**	6,126	568	6,711
FTE, Fall 2009**	5,826	674	6,515
Percent Change in FTE	5.2%	-15.7%	3.0%
Percent Female	64.5%	77.7%	66.0%
Percent Male	35.5%	22.3%	34.0%

Enrollment by Level of Classification

Freshmen/Joint Enrollment	2,369	30.8%
Sophomore	1,388	18.1%
Junior	1,186	15.4%
Senior	1,491	19.4%
Transient/Other	484	6.3%
Graduate	764	9.9%

Enrollment by Ethnic Group

American Indian/Alaskan Native	28	0.4%
Asian/Pacific Islander	258	3.4%
Black/Non-Hispanic	1,804	23.4%
Hispanic	360	4.7%
Multi-Racial	255	3.3%
White/Non-Hispanic	4,997	64.9%

* Full-time status is based upon 12 or more SCH for undergraduates and 9 or more SCH for graduates. Part-time is less than 12 for undergraduates and less than 9 for graduates.

** EFT is the Board of Regents definition of full-time equivalency.

Enrollment by Type of Residency

Georgia Residents	6,607	86.0%
Out-of-State	927	12.1%
Foreign Students	148	1.9%

New Student Enrollment by Classification

Joint Enrollment	59	2.70%
Beginning Freshmen	1,261	57.20%
Transfer Freshmen	197	8.90%
Transfer Sophomore	221	10.00%
Transfer Junior	144	6.50%
Transfer Senior	30	1.40%
Transient/Other	174	7.90%
Graduate	118	5.40%
Total	2,204	100.0%

Students Enrolled in Learning Support Courses

(Unduplicated Headcount)

Due to System Requirement	208
Due to Institution Requirement	2
Due to Voluntary Enrollment	69
Total	279

Average Age

Undergraduate	25.1
Graduate	33.2

Age by Gender

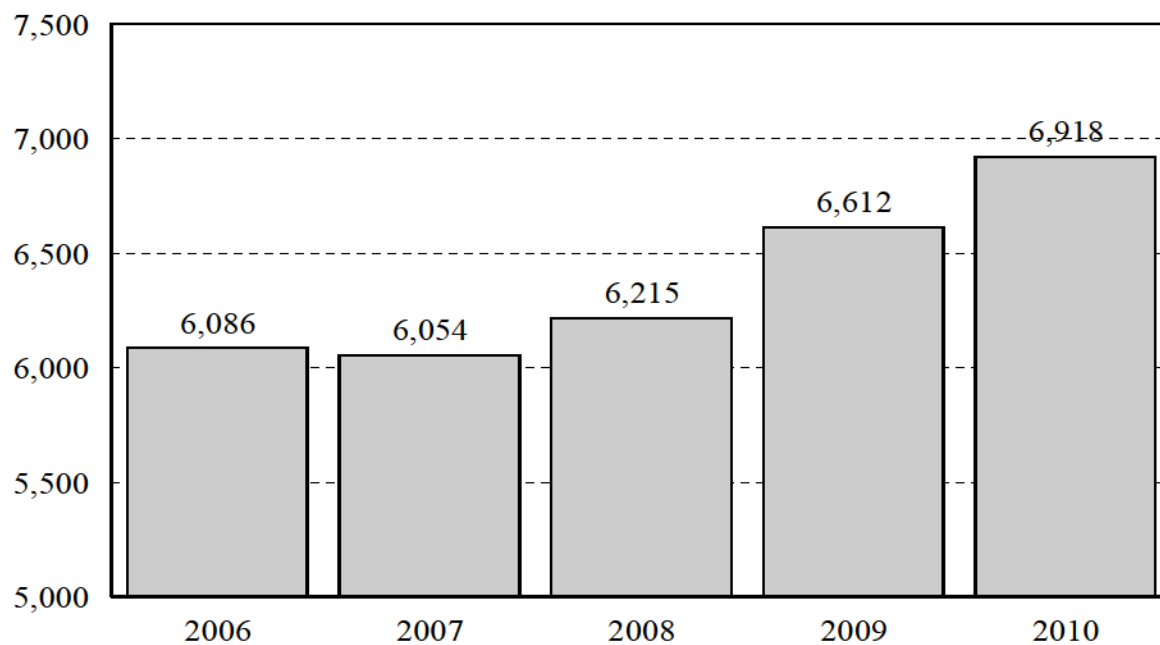
	<u>Female</u>	<u>Male</u>	<u>Total</u>
24 and younger	3,045	1,730	4,775
	60.5%	66.1%	62.4%
25-35	1,356	652	2,008
	26.9%	24.9%	26.3%
36-55	566	194	760
	11.2%	7.4%	9.9%
56 and older	65	41	106
	1.3%	1.6%	1.4%
TOTAL	5,032	2,617	7,649

Five-Year Undergraduate and Graduate Enrollment Trends at a Glance

	Fall 2006	Fall 2007	Fall 2008	Fall 2009	Fall 2010	5 Year # Change	% Change
Headcount	6,728	6,831	7,067	7,538	7,682	954	14.2%
FTE	5,565	5,763	5,984	6,515	6,711	1,146	20.6%
Ethnic Status							
American Indian	26	28	21	43	16	-10	-38.5%
Asian	205	224	219	251	258	53	25.9%
Black	1,500	1,566	1,564	1,715	1,804	304	20.3%
Hispanic	256	253	268	300	360	104	40.6%
Multi-Racial	396	420	482	47	255	-141	-35.6%
White	4,345	4,340	4,488	5,167	4,997	652	15.0%
County of Origin							
Chatham	2,917	2,818	2,884	3,036	3,054	137	4.7%
Bryan	413	489	474	492	530	117	28.3%
Camden	99	98	100	91	83	-16	-16.2%
Effingham	357	383	402	456	457	100	28.0%
Glynn	194	191	198	187	134	-60	-30.9%
Liberty	565	574	550	564	533	-32	-5.7%
Long/McIntosh	62	78	59	83	60	-2	-3.2%
Other GA Counties	1,337	1,359	1,590	1,570	1,992	655	49.0%
Out of State	766	841	785	1,028	806	40	5.2%

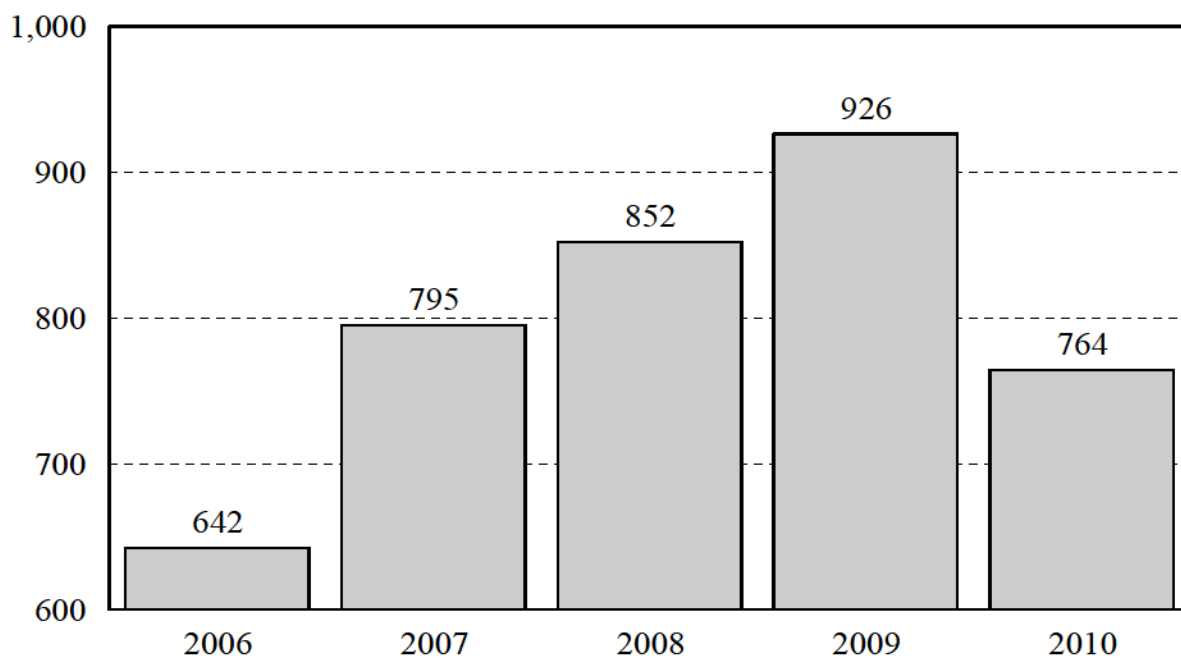
Undergraduate Headcount Enrollment

Undergraduate Enrollment						
	Fall 2006	Fall 2007	Fall 2008	Fall 2009	Fall 2010	5 Year # Change
Total	6,086	6,054	6,215	6,612	6,918	832
# Change		-32	161	397	306	
% Change		-0.5%	2.7%	6.4%	4.6%	



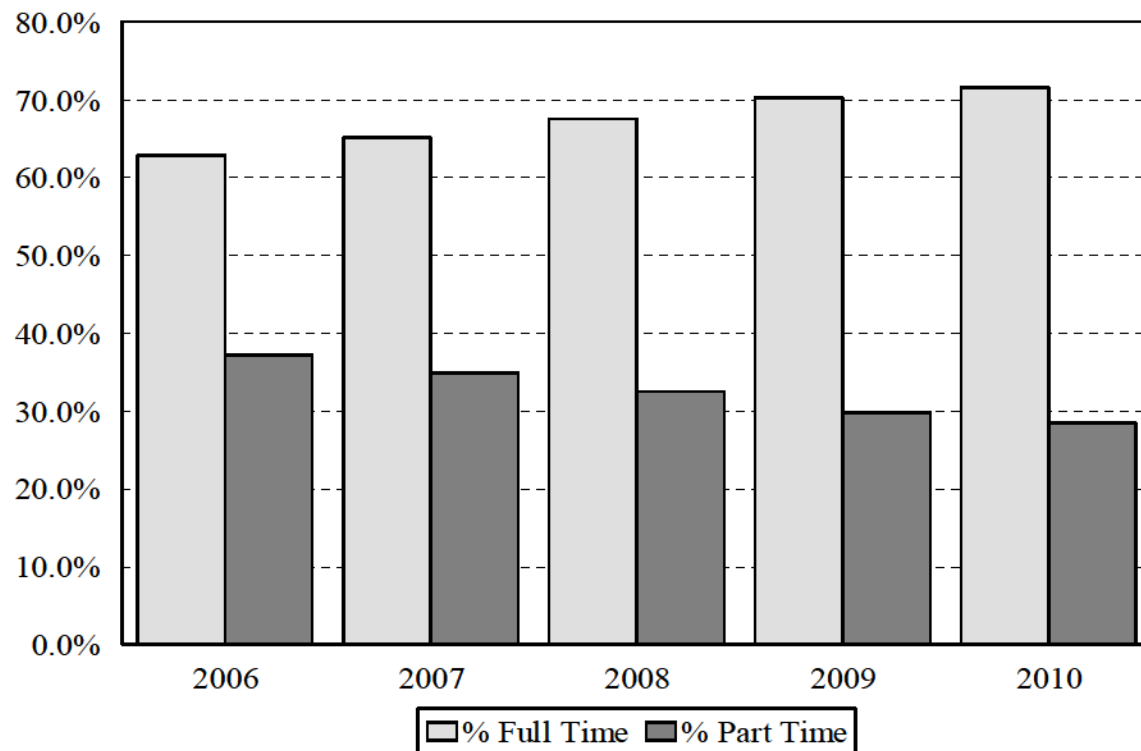
Graduate Headcount Enrollment

Graduate Enrollment						
	Fall 2006	Fall 2007	Fall 2008	Fall 2009	Fall 2010	
						5 Year # Change
						5 Year % Change
Total	642	795	852	926	764	122
# Change		153	57	74	-162	
% Change		23.8%	7.2%	8.7%	-17.5%	



Undergraduate Enrollment by FT/PT Status

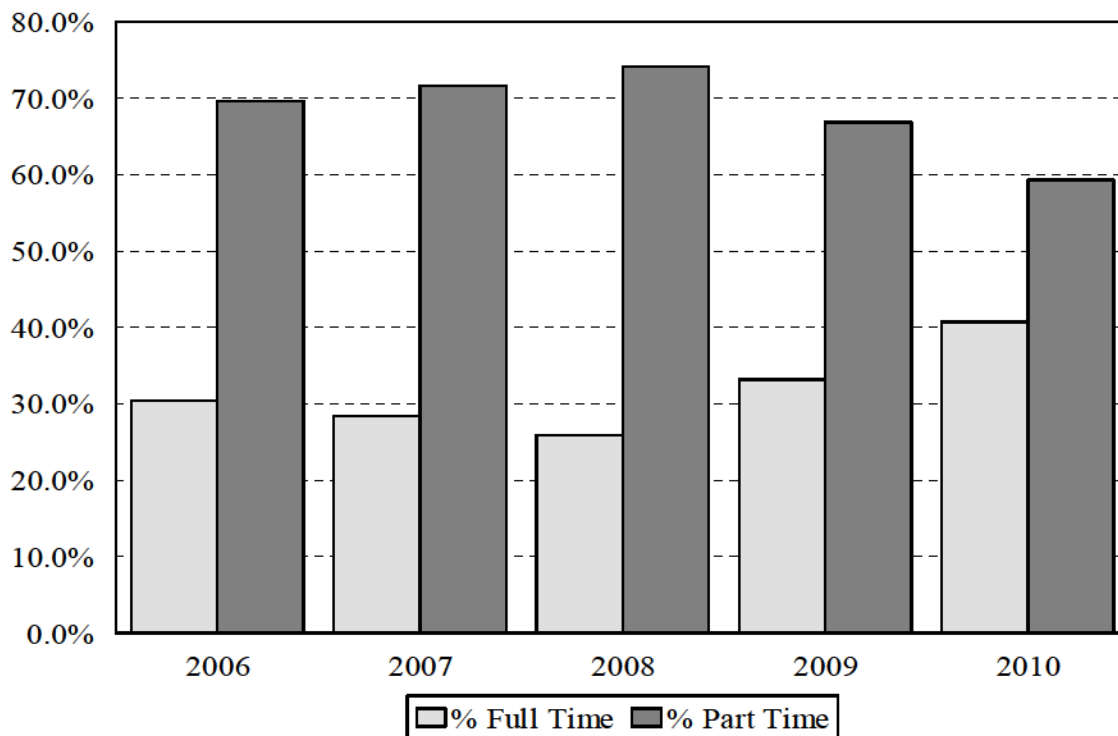
As a Percentage of Undergraduates						5 Year % Change
	Fall 2006	Fall 2007	Fall 2008	Fall 2009	Fall 2010	
% Full-Time	62.8%	65.1%	67.5%	70.2%	71.5%	13.9%
% Part-Time	37.2%	34.9%	32.5%	29.8%	28.5%	-23.4%



Note: Full-time undergraduate students are enrolled for 12 credit hours or more and part-time undergraduates for less than 12 credit hours.

Graduate Enrollment by FT/PT Status

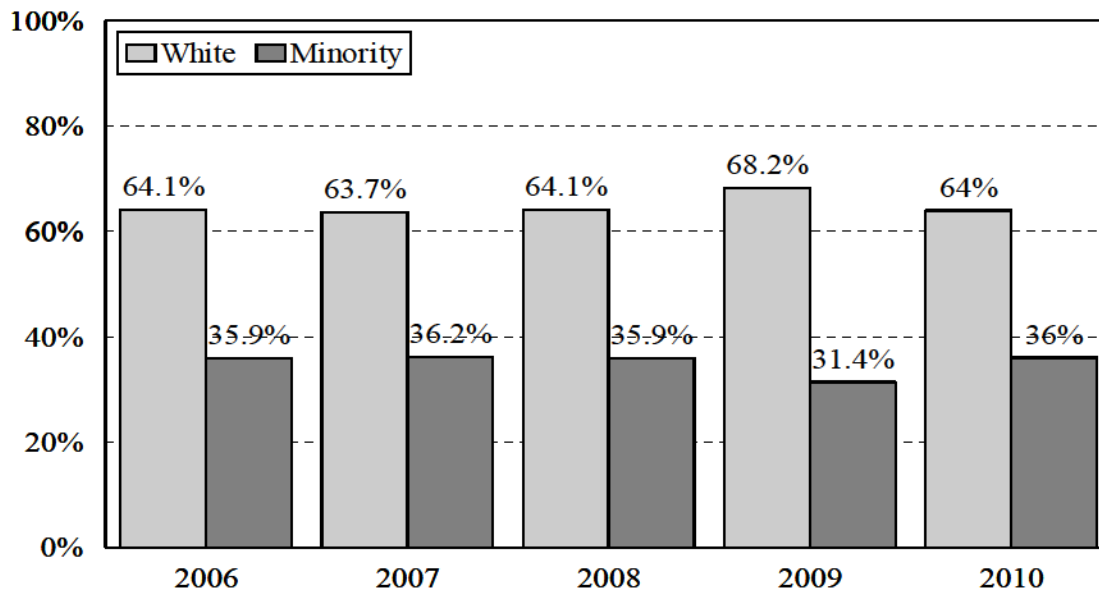
As a Percentage of Graduates						
	Fall 2006	Fall 2007	Fall 2008	Fall 2009	Fall 2010	5 Year % Change
% Full-Time	30.4%	28.4%	25.9%	33.2%	40.7%	33.9%
% Part-Time	69.6%	71.6%	74.1%	66.8%	59.3%	-14.8%



Note: Full-time graduate students are enrolled for 9 SCH or more and part-time graduates for less than 9 SCH.

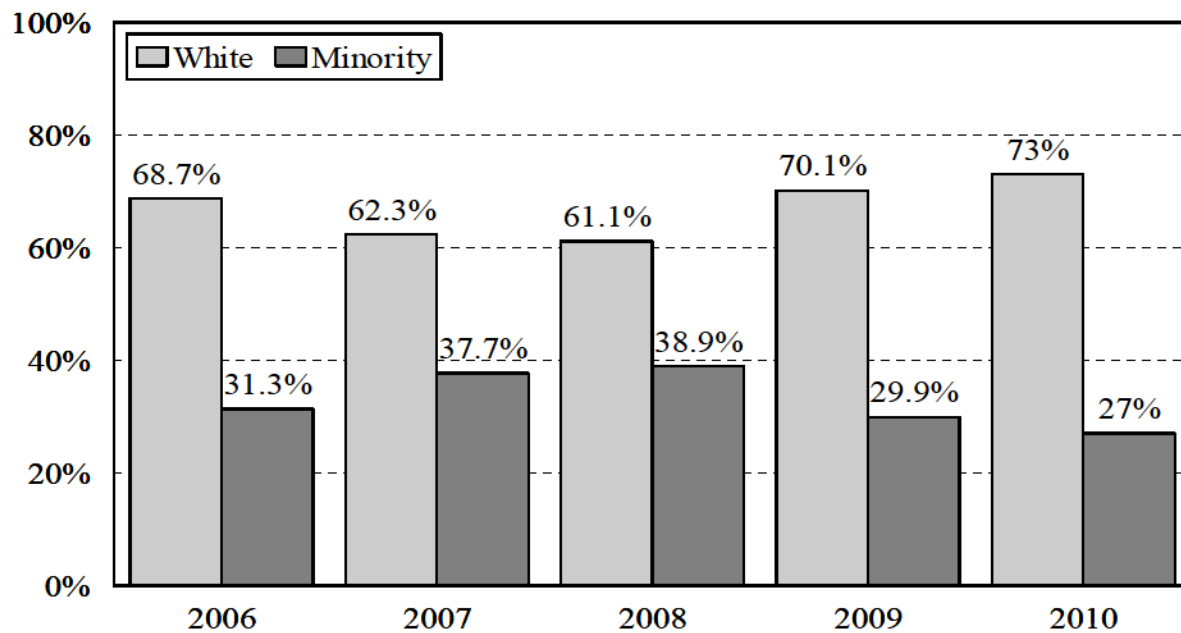
Undergraduate Enrollment by Ethnic Group

As a Percentage of Undergraduates						
	Fall 2006	Fall 2007	Fall 2008	Fall 2009	Fall 2010	5 Year % Change
Amer. Indian/Alaskan	0.4%	0.4%	0.3%	0.6%	0.4%	-2.6%
Asian/Pacific Islander	3.1%	3.5%	3.3%	3.5%	3.5%	11.5%
Black/Non-Hispanic	22.1%	22.3%	21.6%	22.1%	23.6%	6.8%
Hispanic	4.1%	3.9%	4.1%	4.5%	4.9%	20.2%
Multiracial	6.1%	6.1%	6.6%	0.7%	3.6%	-41.3%
Total Minority	35.9%	36.2%	35.9%	31.4%	36.0%	0.4%
White/Non-Hispanic	64.1%	63.7%	64.1%	68.2%	64.0%	-0.2%



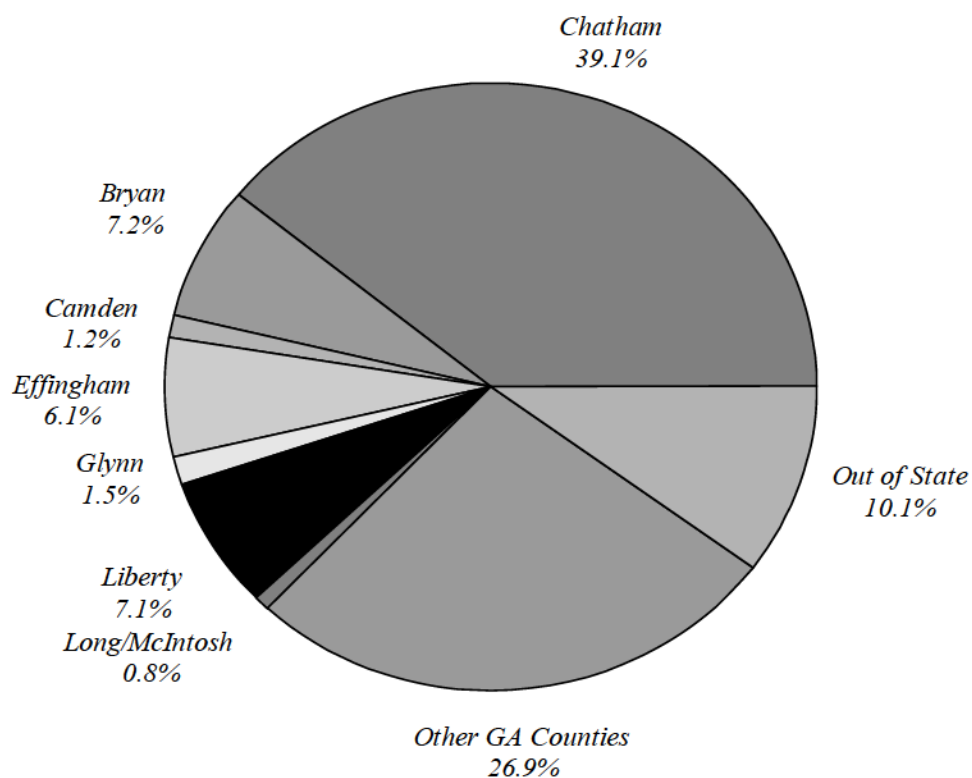
Graduate Enrollment by Ethnic Group

As a Percentage of Graduates						
	Fall 2006	Fall 2007	Fall 2008	Fall 2009	Fall 2010	5 Year % Change
Amer. Indian/Alaskan	0.2%	0.4%	0.2%	0.3%	0.1%	-35.8%
Asian/Pacific Islander	2.2%	1.5%	1.4%	1.7%	2.1%	-3.7%
Black/Non-Hispanic	24.1%	27.7%	26.8%	25.9%	21.5%	-10.9%
Hispanic	1.2%	1.8%	2.0%	2.0%	2.6%	108.7%
Multiracial	3.6%	6.3%	8.5%	0.0%	0.7%	-80.5%
Total Minority	31.3%	37.7%	38.9%	29.9%	27.0%	-13.8%
White/Non-Hispanic	68.7%	62.3%	61.1%	70.1%	73.0%	6.3%

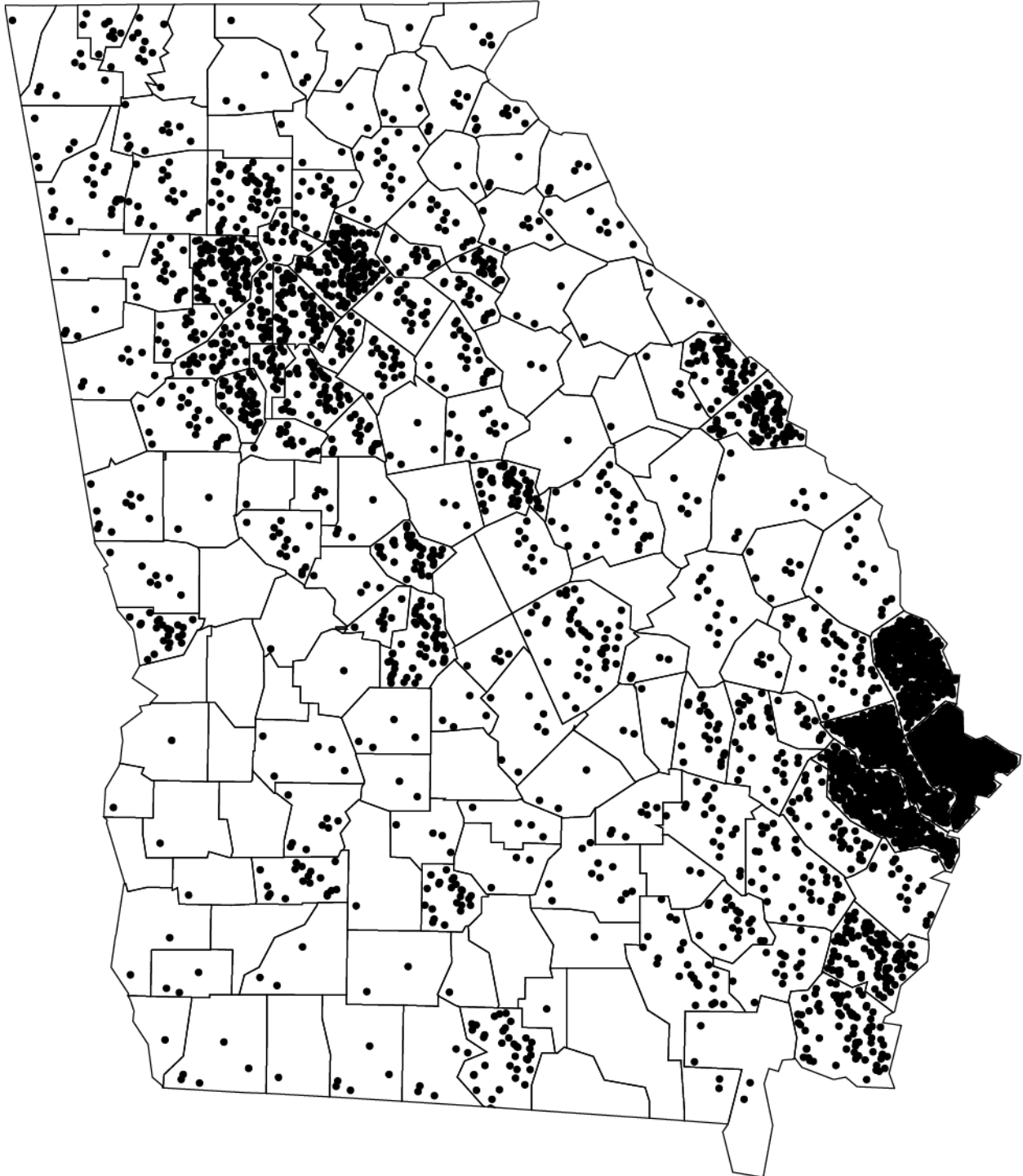


Undergraduate Enrollment by County of Origin

As a Percentage of Undergraduates						
	Fall 2006	Fall 2007	Fall 2008	Fall 2009	Fall 2010	5 Year % Change
Chatham County	43.5%	40.8%	40.3%	39.4%	39.1%	-10.1%
Bryan County	6.5%	7.4%	7.0%	6.9%	7.2%	10.1%
Camden County	1.3%	1.4%	1.3%	1.2%	1.2%	-9.8%
Effingham County	5.9%	5.8%	5.9%	6.3%	6.1%	3.1%
Glynn County	2.7%	2.6%	2.4%	2.0%	1.5%	-44.3%
Liberty County	9.3%	8.6%	8.0%	7.5%	7.1%	-24.1%
Long/McIntosh Counties	1.0%	1.1%	1.2%	1.0%	0.8%	-20.2%
Other GA Counties	19.3%	21.3%	22.6%	25.4%	26.9%	39.7%
Out of State	10.4%	11.0%	11.3%	10.3%	10.1%	-3.0%

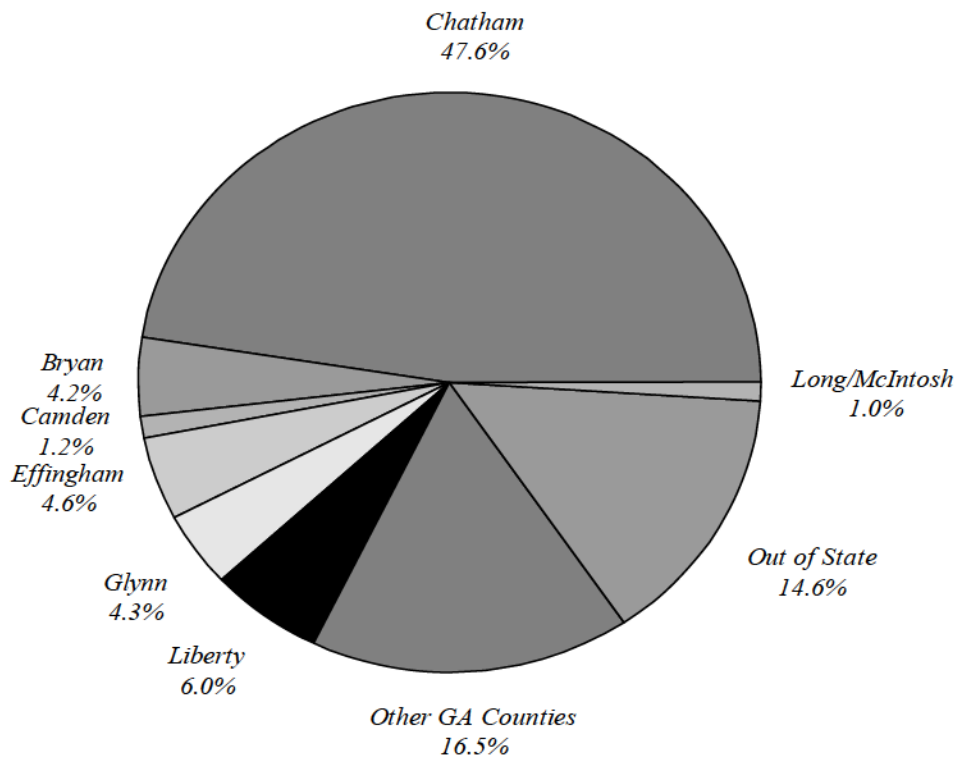


Undergraduate Georgia Enrollment by County of Origin

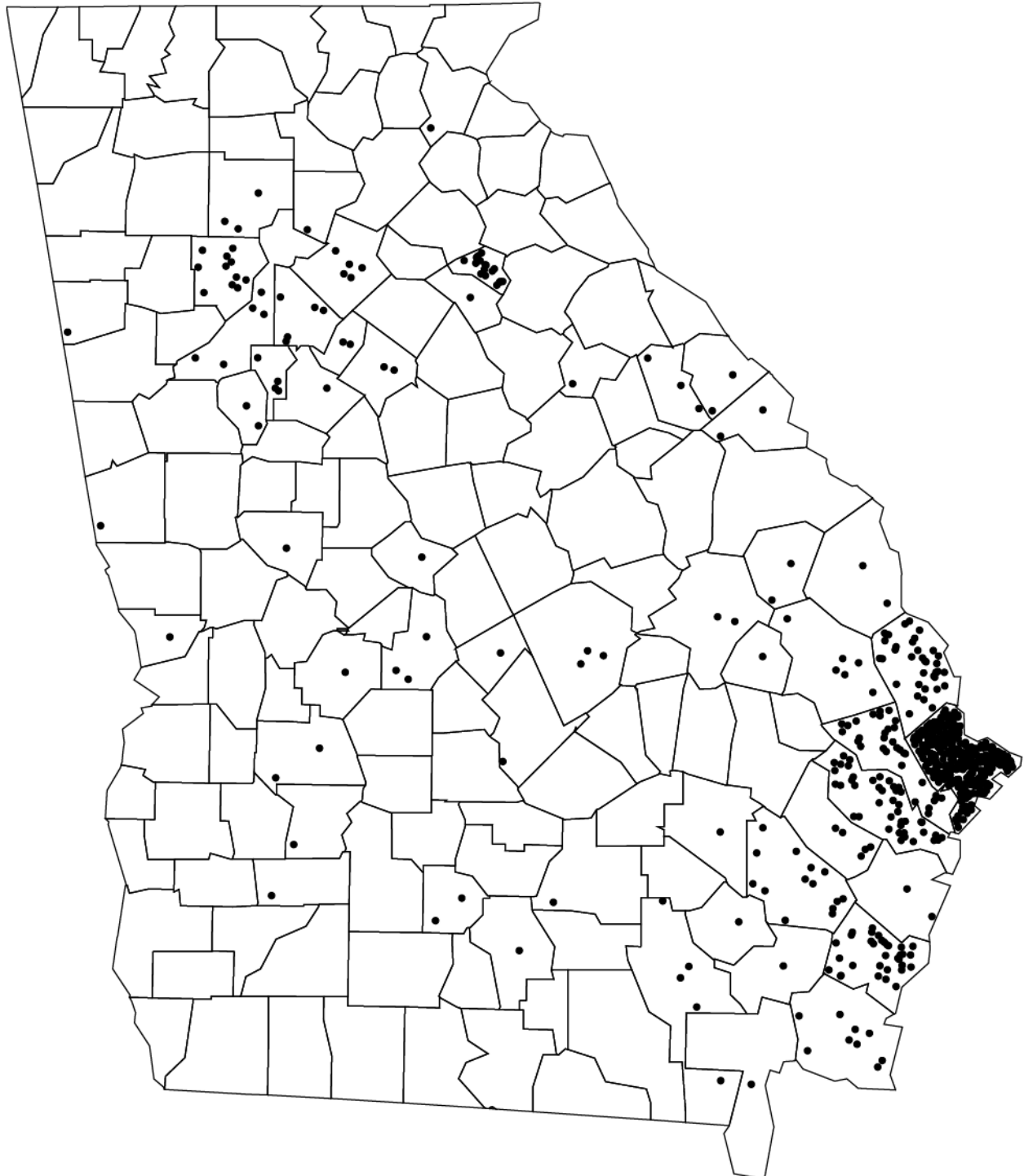


Graduate Enrollment by County of Origin

As a Percentage of Graduates						
	Fall 2006	Fall 2007	Fall 2008	Fall 2009	Fall 2010	5 Year % Change
Chatham County	39.7%	45.0%	45.8%	47.6%	47.6%	19.9%
Bryan County	3.7%	5.3%	4.5%	4.1%	4.2%	13.5%
Camden County	1.2%	1.5%	2.1%	1.3%	1.2%	0.0%
Effingham County	3.0%	3.7%	4.6%	4.6%	4.6%	53.3%
Glynn County	3.7%	4.5%	5.9%	5.7%	4.3%	16.2%
Liberty County	6.2%	6.8%	6.7%	7.6%	6.0%	-3.2%
Long/McIntosh Counties	0.9%	1.0%	1.1%	1.7%	1.0%	11.1%
Other GA Counties	23.8%	20.5%	19.2%	17.2%	16.5%	-30.7%
Out of State	17.6%	11.7%	10.1%	10.2%	14.6%	-17.0%

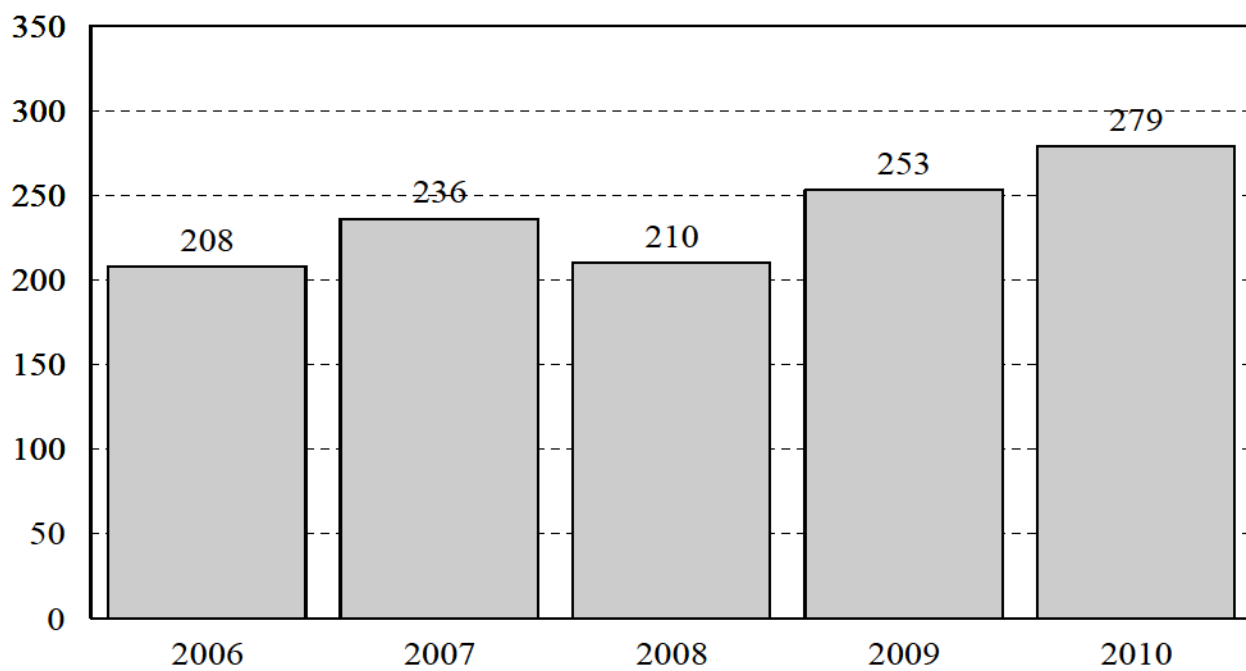


Graduate Georgia Enrollment by County of Origin



Learning Support Enrollment

Enrollment							
	Fall 2006	Fall 2007	Fall 2008	Fall 2009	Fall 2010	5 Year # Change	5 Year % Change
Learning Support	208	236	210	253	279	71	34.1%
# Change		28	-26	43	26		
% Change		13.5%	-11.0%	20.5%	10.3%		

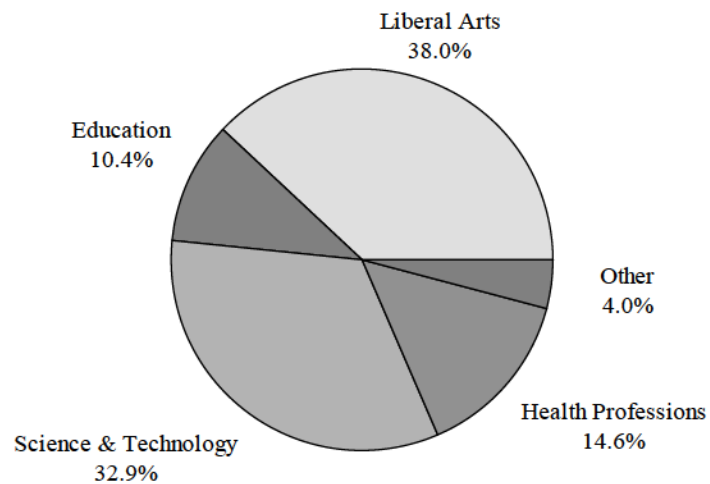


Graduate & Undergraduate Student Credit Hours by College and University

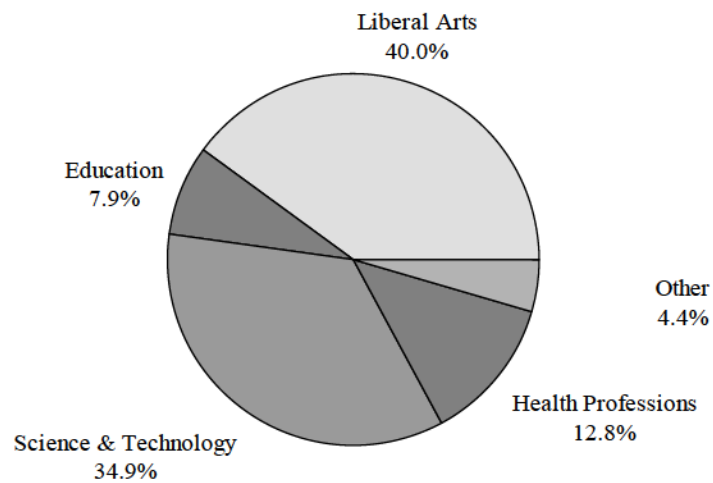
Fall 2010 Credit Hours					
	Undergrad SCH	Graduate SCH	Total SCH	Percent of College	Percent of University
Childhood and Exceptional Student Edu*	2178	1438	3616	39.4%	4.1%
Adolescent and Adult Education*	4364	1194	5558	60.6%	6.3%
Total: College of Education	6542	2632	9174	100.0%	10.4%
Communication Sciences & Disorders	342	276	618	4.8%	0.7%
Dental Hygiene	429	0	429	3.3%	0.5%
Health Sciences	2134	858	2992	23.2%	3.4%
Medical Technology	840	0	840	6.5%	1.0%
Nursing	4481	280	4761	37.0%	5.4%
Physical Therapy	120	918	1038	8.1%	1.2%
Radiologic Sciences	1442	0	1442	11.2%	1.6%
Respiratory Therapy	762	0	762	5.9%	0.9%
Total: College of Health Professions	10550	2332	12882	100.0%	14.6%
Art, Music, & Theatre	6524	38	6562	19.7%	7.5%
C.J., Social & Political Science	6835	108	6943	20.8%	7.9%
Economics	1446	0	1446	4.3%	1.6%
History	7407	206	7613	22.8%	8.7%
Languages, Literature, & Philosophy	10760	60	10820	32.4%	12.3%
Total: College Liberal Arts	32972	412	33384	100.0%	38.0%
Biology	8160	0	8160	28.2%	9.3%
Chemistry & Physics	5502	12	5514	19.1%	6.3%
Information, Computing, and Engineering	2,842	62	2904	10.0%	3.3%
Mathematics	8,478	30	8508	29.4%	9.7%
Psychology	3,825	3	3828	13.2%	4.4%
Total: College of Science & Technology	28807	107	28914	100.0%	32.9%
AASU 1101	375	0	375		0.4%
Interdisciplinary Studies	363	6	369		0.4%
Law Enforcement Training Center	2722	0	2722		3.1%
Military/Naval Science	127	0	127		0.1%
Total: AASU	82458	5489	87947		100.0%

***College of Education departments were reorganized beginning July 1, 2010.*

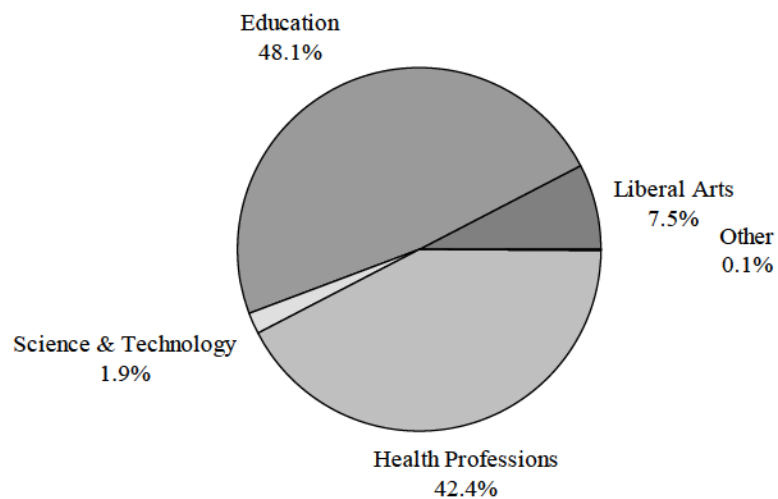
Total Student Credit Hours



Undergraduate Student Credit Hours



Graduate Student Credit Hours



Fall Breakdown of University Credit Hours

	Fall 2006	Fall 2007	Fall 2008	Fall 2009	Fall 2010	5 Year % Change
Childhood & Exceptional Student Edu*	6.1%	6.3%	6.5%	5.1%	4.1%	-32.8%
Adolescent & Adult Education*	7.7%	7.5%	7.5%	7.3%	6.3%	-18.2%
Total: College of Education	13.8%	13.8%	14.0%	12.4%	10.4%	-24.6%
% Change		0.0%	0.2%	-1.6%	-2.0%	
Communication Sciences & Disorders	0.5%	0.6%	0.5%	0.6%	0.7%	40.0%
Dental Hygiene	0.8%	0.7%	0.7%	0.5%	0.5%	-37.5%
Health Science	3.8%	3.9%	4.0%	3.7%	3.4%	-10.5%
Medical Technology	1.3%	1.5%	1.6%	1.3%	1.0%	-23.1%
Nursing	4.3%	4.5%	5.7%	5.2%	5.4%	25.6%
Physical Therapy	1.4%	1.4%	1.2%	1.2%	1.2%	-14.3%
Radiologic Sciences	2.0%	1.8%	1.7%	1.6%	1.6%	-20.0%
Respiratory Therapy	0.8%	0.9%	0.8%	0.9%	0.9%	12.5%
Total: College of Health Professions	14.9%	15.3%	16.2%	14.9%	14.7%	-1.3%
% Change		0.4%	0.9%	-1.3%	-0.2%	
Art, Music, & Theatre	7.5%	7.2%	7.0%	7.2%	7.5%	0.0%
CJ, Social, & Political Science	6.5%	6.0%	6.0%	7.3%	7.9%	21.5%
Economics	2.1%	2.0%	2.2%	1.7%	1.6%	-23.8%
History	8.1%	8.2%	8.3%	8.1%	8.7%	7.4%
Interdisciplinary Studies	0.4%	0.7%	0.5%	1.8%	0.4%	0.0%
Languages, Literature, & Philosophy	11.9%	12.2%	11.6%	11.8%	12.3%	3.4%
Total: College of Liberal Arts	36.5%	36.3%	35.6%	37.8%	38.4%	5.2%
% Change		-0.2%	-0.7%	2.2%	0.6%	
Biology	10.0%	10.1%	9.0%	8.4%	9.3%	-7.0%
Chemistry & Physics	6.1%	6.0%	6.1%	5.6%	6.3%	3.3%
Information, Computing, & Engineering	3.5%	3.5%	3.8%	3.7%	3.3%	-5.7%
Mathematics	9.0%	9.4%	9.2%	9.0%	9.7%	7.8%
Psychology	4.0%	3.7%	3.4%	3.7%	4.4%	10.0%
Total: College of Science & Techonology	32.6%	32.7%	31.5%	30.4%	33.0%	1.2%
% Change		0.1%	-1.2%	-1.1%	2.6%	
AASU 1101	0.4%	0.4%	0.4%	0.7%	0.4%	0.0%
% Change		0.0%	0.1%	0.1%	-0.3%	
Law Enforcement Training Center	2.1%	1.6%	1.4%	2.1%	3.1%	47.6%
% Change		-0.5%	-0.2%	-0.2%	1.0%	
Military/Naval Science	0.1%	0.1%	0.1%	0.1%	0.1%	33.3%
% Change		0.0%	0.0%	0.0%	0.0%	

* Departmental changes in the College of Education were made effective July 1, 2010, which would result in inappropriate comparison.

Note: Totals may not equal 100% due to rounding.

Departmental Productivity Ratios - Based on Proposed FY11 Budget

	Fall 2010 SCH	% University SCHs (A)	Fund Sources			% General Funds (B)	Productivity Ratio (Gen.)* (A)/(B)	Total Budget	% Total Budget
			General	Special	Sponsored/				
			Fund*	Initiatives/ Lottery Funds	Research Consortium				
Childhood & Exceptional Student Edu**	3616	4.1%	\$1,064,491	\$0	\$0	4.6%	0.90	\$1,064,491	4.6%
Adult & Adolescent Edu**	5558	6.3%	\$1,772,855	\$0	\$0	7.6%	0.83	\$1,772,855	7.6%
Total Education	9174	10.4%	\$2,837,346	\$0	\$0	12.1%	0.86	\$2,837,346	12.1%
Comm. Disorders & Sci.	618	0.7%	\$226,289	\$0	\$0	1.0%	0.73	\$226,289	1.0%
Dental Hygiene	429	0.5%	\$540,553	\$0	\$0	2.3%	0.21	\$540,553	2.3%
Health Sciences	2992	3.4%	\$1,225,737	\$0	\$0	5.2%	0.65	\$1,225,737	5.2%
Medical Technology	840	1.0%	\$430,944	\$0	\$0	1.8%	0.52	\$430,944	1.8%
Nursing	4761	5.4%	\$2,233,694	\$0	\$0	9.6%	0.57	\$2,233,694	9.6%
Physical Therapy	1038	1.2%	\$734,920	\$0	\$0	3.1%	0.38	\$734,920	3.1%
Radiologic Sciences	1442	1.6%	\$1,066,501	\$0	\$0	4.6%	0.36	\$1,066,501	4.6%
Respiratory Therapy	762	0.9%	\$342,446	\$0	\$0	1.5%	0.59	\$342,446	1.5%
Total Health Professions	12882	14.6%	\$6,801,084	\$0	\$0	29.1%	0.50	\$6,801,084	29.1%
Art, Music & Theatre	6562	7.5%	\$1,628,089	\$0	\$0	7.0%	1.07	\$1,628,089	7.0%
C.J., Social & Political Sci.	6943	7.9%	\$1,100,498	\$0	\$0	4.7%	1.68	\$1,100,498	4.7%
Economics	1446	1.6%	\$510,995	\$0	\$0	2.2%	0.75	\$510,995	2.2%
History	7613	8.7%	\$1,100,830	\$0	\$0	4.7%	1.84	\$1,100,830	4.7%
Lang., Lit., and Phil.	10820	12.3%	\$2,329,116	\$0	\$0	10.0%	1.24	\$2,329,116	10.0%
Total Liberal Arts	33384	38.0%	\$6,669,528	\$0	\$0	28.5%	1.33	\$6,669,528	28.5%
Biology	8160	9.3%	\$1,522,169	\$0	\$0	6.5%	1.43	\$1,522,169	6.5%
Chemistry & Physics	5514	6.3%	\$1,477,651	\$0	\$0	6.3%	0.99	\$1,477,651	6.3%
Inform., Comput., & Engin.	2,904	3.3%	\$1,995,788	\$0	\$0	8.5%	0.39	\$1,995,788	8.5%
Mathematics	8,508	9.7%	\$1,294,353	\$0	\$0	5.5%	1.75	\$1,294,353	5.5%
Psychology	3,828	4.4%	\$748,868	\$0	\$0	3.2%	1.36	\$748,868	3.2%
Total Science & Technology	28914	32.9%	\$7,038,829	\$0	\$0	30.1%	1.09	\$7,038,829	30.1%
Military Science	127	0.1%	\$40,891	\$0	\$0	0.2%	0.83	\$40,891	0.2%
Total University	87,947	100.0%	\$23,387,678	\$0	\$0	100%	1.00	\$23,387,678	100.0%

Note: Does not include Interdisciplinary Studies, AASU 1101, or Law Enforcement Training Center credit hours.

*General funds consist of personal services, travel, operating supplies and expense, and equipment and/or books.

**College of Education departments were reorganized beginning July 1, 2010.

Lecture Sections by Level

Department by Level	Subject	Number of Sections	Number Enrolled	Average Class Size
COLLEGE OF EDUCATION				
Adult & Adolescent Education				
Lower Level	EDUC	10	236	23.6
	PEAT	1	23	23.0
	PEBC	14	418	29.9
	PEEC	2	59	29.5
	PEHM	2	43	21.5
	READ	1	18	18.0
	RGTR	1	25	25.0
Upper Level	ECUC	8	152	19.0
	MGSE	6	74	12.3
	PEEC	2	29	14.5
	PEHM	5	110	22.0
Graduate	ADED	5	100	20.0
	EDUC	2	58	29.0
	FOUN	4	60	15.0
	HRVD	1	12	12.0
	MGED	1	3	3.0
	MGSE	6	101	16.8
	Totals	71	1521	21.4
Childhood & Exceptional Student Education				
Lower Level	CEUG	3	56	18.7
	EDUC	4	83	20.8
	SPED	2	5	2.5
Upper Level	CEUG	1	10	10.0
	ECUG	14	222	15.9
	EDUC	2	61	30.5
	SPED	3	9	3.0
Graduate	ECEG	3	56	18.7
	ECMT	6	119	19.8
	EDUC	2	66	33.0
	EEXE	5	152	30.4
	RDEN	1	24	24.0
	Totals	46	863	18.8
College of Education Totals		117	2384	20.4

Department by Level	Subject	Number of Sections	Number Enrolled	Average Class Size
COLLEGE OF HEALTH PROFESSIONS				
Communication Sciences and Disorders				
Lower Level	CSDS	4	52	13.0
Upper Level	CSDS	4	62	15.5
Graduate	CSDS	5	66	13.2
	Totals	13	180	13.8
Dental Hygiene				
Lower Level	DHYG	8	153	19.1
Upper Level	DHED	3	6	2.0
	Totals	11	159	14.5
Health Science				
Lower Level	HSCC	2	48	24.0
	HSCP	1	30	30.0
Upper Level	GERO	1	52	52.0
	HSCA	3	93	31.0
	HSCC	5	148	29.6
	HSCF	2	14	7.0
	HSCP	2	73	36.5
	PUBH	5	137	27.4
	SMED	4	79	19.8
Graduate	GERO	1	4	4.0
	MHSA	10	109	10.9
	PUBH	12	97	8.1
	SMED	6	43	7.2
	Totals	54	927	17.2
Medical Technology				
Upper Level	MEDT	15	186	12.4
	Totals	15	186	12.4
Nursing				
Upper Level	NURS	16	817	51.1
Graduate	NURS	7	81	11.6
	Totals	23	898	39.0
Physical Therapy				
Upper Level	RHAB	2	39	19.5
Graduate	PHTH	9	179	19.9
	Totals	11	218	19.8

Department by Level	Subject	Number of Sections	Number Enrolled	Average Class Size
Radiologic Sciences				
Lower Level	HLPR	4	101	25.3
Upper Level	RADS	25	345	13.8
	Totals	29	446	15.4
Respiratory Therapy				
Lower Level	RESP	4	115	28.8
Upper Level	RESP	7	115	16.4
	Totals	11	230	20.9
College of Health Professions Totals		167	3244	19.4

Department by Level	Subject	Number of Sections	Number Enrolled	Average Class Size
COLLEGE OF LIBERAL ARTS				
Art, Music, and Theatre				
Lower Level	ARTS	32	859	26.8
	COMM	7	157	22.4
	MUSC	13	426	32.8
	THEA	8	198	24.8
Upper Level	ARTS	23	226	9.8
	COMM	1	17	17.0
	MUSC	8	50	6.3
	THEA	9	127	14.1
Graduate Level	ARTS	3	8	2.7
	COMM	1	2	2.0
	MUSC	2	1	0.5
	Totals	107	2071	19.4
Criminal Justice, Political Science, and Social Science				
Lower Level	ANTH	6	265	44.2
	CRJU	20	536	26.8
	LWSO	1	24	24.0
	POLS	24	660	27.5
	SOCI	9	422	46.9
Upper Level	ANTH	2	22	11.0
	CRJU	11	158	14.4
	POLS	13	186	14.3
	SOCI	2	60	30.0
Graduate	CRJU	5	34	6.8
	POLS	4	2	0.5
	Totals	97	2369	24.4
Economics				
Lower Level	ACCT	1	25	25.0
	ECON	8	284	35.5
Upper Level	ECON	9	174	19.3
	Totals	18	483	26.8
History				
Lower Level	GEOG	4	159	39.8
	HIST	52	2080	40.0
Upper Level	HIST	14	242	17.3
Graduate	HIST	6	57	9.5
	Totals	76	2538	33.4

Department by Level	Subject	Number of Sections	Number Enrolled	Average Class Size
Languages, Literature, & Philosophy				
Lower Level	ENGL	83	1993	24.0
	ETHC	2	119	59.5
	FREN	3	56	18.7
	GRMN	1	7	7.0
	PHIL	14	402	28.7
	SPAN	16	348	21.8
	RGTE	2	21	10.5
Upper Level	ENGL	22	378	17.2
	FILM	2	46	23.0
	FREN	1	14	14.0
	JOUR	2	49	24.5
	PHIL	2	43	21.5
	SPAN	6	103	17.2
	ENGL	8	15	1.9
Graduate	SPAN	1	3	3.0
	Totals	165	3597	21.8
College of Liberal Arts Totals		463	11058	23.9

Department by Level	Subject	Number of Sections	Number Enrolled	Average Class Size
COLLEGE OF SCIENCE AND TECHNOLOGY				
Biology				
Lower Level	BIOL	38	1803	47.4
	ISCI	2	29	14.5
Upper Level	BIOL	15	324	21.6
	Totals	55	2156	39.2
Chemistry & Physics				
Lower Level	ASTR	2	155	77.5
	CHEM	22	732	33.3
	ISCI	2	32	16.0
	PHSC	2	119	59.5
	SCIE	1	14	14.0
Upper Level	CHEM	6	84	14.0
	GEOL	1	70	70.0
	METR	1	63	63.0
	PHYS	4	29	7.3
Graduate	PHSC	1	4	4.0
	Totals	42	1302	31.0
Computer Science & Information Technology				
Lower Level	CSCI	15	306	20.4
	ITEC	5	109	21.8
	WBIT	5	14	2.8
Upper Level	CSCI	8	94	11.8
	ITEC	7	133	19.0
	WBIT	9	22	2.4
Graduate	CSCI	4	19	4.8
	Totals	53	697	13.2
Mathematics				
Lower Level	MATH	69	2428	35.2
Upper Level	MATH	16	225	14.1
	STAT	1	36	36.0
Graduate	MATH	2	10	5.0
	Totals	88	2699	30.7
Psychology				
Lower Level	PSYC	23	853	37.1
Upper Level	PSYC	18	409	22.7
Graduate	PSYC	1	1	1.0
	Totals	42	1263	30.1
Engineering Studies				
Lower Level	ENGR	11	250	22.7
	Totals	11	250	22.7
College of Science and Technology Totals		291	8367	28.8

Department by Level	Subject	Number of Sections	Number Enrolled	Average Class Size
Interdisciplinary Studies				
Lower Level	AASU	12	225	18.8
	GWST	3	86	28.7
	HUMN	1	4	4.0
	RELI	1	18	18.0
Upper Level	GWST	1	1	1.0
Graduate	MALP	1	1	1.0
	Totals	19	335	17.6
Law Enforcement Training Center				
Lower Level	LETC	61	457	7.5
	Totals	61	457	7.5
Military Sciences				
Lower Level	MILS	3	22	7.3
	NSCI	4	9	2.3
Upper Level	MILS	4	14	3.5
	NSCI	2	5	2.5
	Totals	13	50	3.8