

Reflector

1940

Georgia Southern University

Follow this and additional works at: <https://digitalcommons.georgiasouthern.edu/reflector-yearbook>



Part of the [Higher Education Commons](#)

Recommended Citation

Georgia Southern University, "Reflector" (1940). *Reflector Yearbook*. 13.
<https://digitalcommons.georgiasouthern.edu/reflector-yearbook/13>

This book is brought to you for free and open access by the Student Media at Digital Commons@Georgia Southern. It has been accepted for inclusion in Reflector Yearbook by an authorized administrator of Digital Commons@Georgia Southern. For more information, please contact digitalcommons@georgiasouthern.edu.

The book cover is a deep blue color. The right half of the cover features a marbled pattern with swirling, organic shapes. The left half features a relief of a classical architectural structure, including three columns and a pediment. The title 'REFLECTOR' is printed in a large, gold, serif font at the top right, and the year '1940' is printed in a similar font below it.

REFLECTOR

1940







Digitized by the Internet Archive
in 2014

<https://archive.org/details/reflector1940na>



THE REFLECTOR

1940

Georgia Southern University
Zach S. Henderson Library



Chapel is over



Published by the SENIOR CLASS OF

THE
REFLECTOR
for
1940

PORTRAYING THE HOME
OF GEORGIA'S TEACHERS
AT COLLEGEBORO, GA.



GEORGIA TEACHERS COLLEGE

About

THE FAMILY



TO PRESENT AN OUTLINE of the school year 1939-1940 at Georgia Teachers College as an aid to each student's memory in keeping accurate and making permanent the events and the activities of the year is the aim of the REFLECTOR. Believing that our college, our faculty, our classes, our activities, and our recreation are the most perfect reflections of the college year, we have presented these in an attempt to make the yearbook true to its name.

The 1940 REFLECTOR portrays college life as the life of a family. Georgia Teachers College is represented as "The Home of Georgia Teachers"; on the pages of the family album, we have attempted to picture our "big, happy family" of students and teachers. We present this REFLECTOR through the combined efforts of the Editorial and Business Staffs under the direction of a faculty supervisor. We have enjoyed the work. If you like it, we consider the

REFLECTOR a success.

Between classes at "The Blue Tide"

The Situation

1. THE HOME
 - THE APPEARANCE
 - THE PARENTS
 - THE CHILDREN
2. THINGS THE CHILDREN DO
 - PARTICIPATION IN ORGANIZATIONS
3. CHILDREN'S SOCIAL LIFE
4. THINGS THE CHILDREN PLAY
5. TEN PRETTY GIRLS
6. ADVERTISEMENTS



TO THE ONE to whom T. C. has been home long enough for her to have watched and participated in its transition from an A. & M. through Georgia Normal and South Georgia Teachers College to Georgia Teachers College . . . to Miss MALVINA TRUSSELL, who has taught at least one course in every division with one exception, who has field-tripped us and fed us, loved us and scolded us, and who has inspired us to be content with nothing less than the best, we, the REFLECTOR Staff of 1940, dedicate this issue of the REFLECTOR.



At home



Miss Trussell's lovely home



Dedication



Dr. and Mrs. Pittman watching the game

FROM DR. PITTMAN to Dean Nations the heads of the family and their assistants are faithful in their duties of looking after and providing for the interests and needs of the children, the guardians and the home itself.

Tolerating only that which is best and condoning nothing that should be better, the efforts and accomplishments of the heads of the family are recognized and appreciated by all the members of the family.

The HEADS





"Jake" gives his opinion on the Georgia Progress Program



Four parents get together on the European situation

of the FAMILY



DR. MARVIN S. PITTMAN

Dr. Pittman, ably aided by the invaluable advice of Mrs. Pittman, lends all his efforts toward promoting that which will be most beneficial to T. C., its students and its alumni.

The Pittmans' home, Marcanne, deserving of its namesakes, is only a step, a hop and a skip away and both the parents and the children are more than welcome at any time.

Our Godfather

The PRESIDENT

"HOME"—a sacred word, full of meanings created by the experiences of him who comprehends those meanings. Mother, father, sisters, brothers, relatives, friends are all factors which compose "home." Joys and sorrows, sad and gladsome occasions, sacrifices for the family's name—all these and more are the things which create for us our concept of home.

What "home" is to each of us as members of a family, Georgia Teachers College is to those members of the teaching profession who have done and are doing their professional study here. Teachers, classmates, clubmates, subjects studied, classroom experiences, assembly programs, dining hall incidents, parties, ball games, excursions, educational vocabulary, pedagogical concepts, professional purposes, ideals of service, and numerous other items are the component elements which create that something which former students affectionately call "dear old T. C." Buildings and grounds are a part of it, but only the physical structure about which a thousand memories cluster to create an emotional and a professional soul—"T. C"—"home"—to students and alumni of Georgia Teachers College.

Our Guardians

The DEANS

UNDERSTANDING and sympathetic at all times, no problem too big for the children is too little to be solved by the Dean. He, with Mrs. Henderson and Gene and Mary, exemplify almost perfectly the ideal of family life T. C. is striving to achieve.



DEAN Z. S. HENDERSON



MISS SOPHIE JOHNSON



MISS MAMIE VEAZY

NO WORDS can adequately express the deep feeling the students have in regard to Aunt Sophie, mother of the boys, and Miss Veazy, mother of the girls.

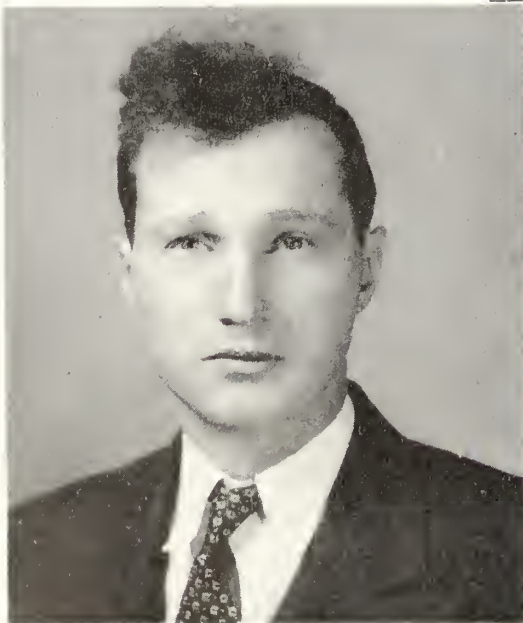


Panoramic view of T. C.

DR. J. E. CARRUTH
Director of Senior Division

DR. C. M. DESTLER
Director of Junior Division

DR. JOE



DR. CHET

Division of Social Sciences

R. J. H. DeLoach
Associate Professor

Hester Newton
Assistant Professor

J. C. Ward
Instructor

C. M. Destler
Chairman, Professor

MISS MAE MICHAEL, Secretary to the President, can inveigle us into doing what she wants, whether it is running an errand or standing up straight.

MISS PERRY



MISS VIOLA PERRY, *Registrar*

MISS PERRY gives us all the A's we make and sees that we graduate.



MR. BOB

Our Mentors

MR. R. L. WINBURN
Bursar

MR. BOB, with his assistant, Roy Rabun, keeps us straight with the business office.



The "Ad" Building

Division of Education

MR. WALTER DOWNS

Chairman

Director of Laboratory School



MR. DOWNS

KNAPP BODDIFORD
Instructor, Laboratory School

JOSEPH E. CARRUTH
Professor

ELIZABETH DONOVAN
Supervisor of Ogeechee Laboratory School

SADIE FITZGERALD
Instructor, Laboratory School

JANE FRANSETH
Supervisor of Bulloch County Schools

MARION GROOVER
Instructor, Laboratory School

HARRIS HARVILL
Instructor, Laboratory School

LESLIE W. JOHNSON
Associate Professor

JOHN JULIA MACMAHAN
Instructor, Laboratory School

HASSIE MAUDE McELVEEN
Assistant Librarian

EWELL GLEN PIGG
Instructor, Laboratory School

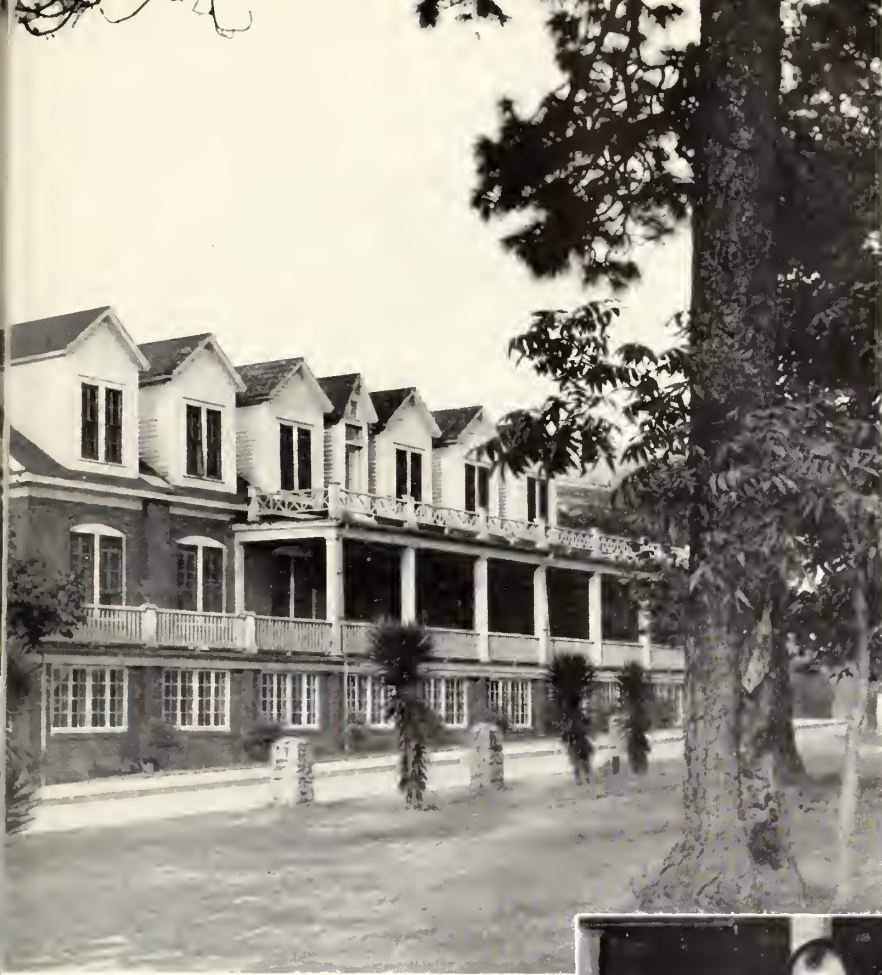
MRS. JANE REID ROBSON
Instructor, Laboratory School

MARY WILL WAKEFORD
Instructor, Laboratory School

MARIE WOOD
Instructor, Laboratory School



LABORATORY SCHOOL
Where we do our practice teaching



Division of Fine and Practical Arts

MRS. ESTHER W. BARNES
Instructor, Piano

WILLARD CARTEE
Instructor, Commerce

MRS. IDA R. COZART
Music

ERNEST HARRIS
*Instructor, Band and Orchestral
Music*

LILLIAN HOGARTH
Instructor, Arts

RUTH BOLTON
*Associate Professor, Home
Economics*

ROBERT H. LONDON
*Assistant Professor, Industrial
Arts*

ANDERSON HALL
Where we have our meals

E. G. LIVINGSTON
Chairman, Industrial Arts



MRS. CYNTHIA D. DAVIS
Dietitian

MRS. JANE REID ROBSON
Instructor, Home Economics

IVAN HOSTETLER
*Associate Professor, Industrial
Arts*

RONALD J. NEIL
Associate Professor, Music

Division of Health and Physical Education

BYRON L. SMITH, Chairman
Associate Professor

MRS. GENARIO HONEYCUTT BOWEN
Instructor

SUSIE HAMMACK
Assistant Professor

EVA PARNELL
College Nurse

JAMES WRINKLE
Instructor

DR. J. H. WHITESIDE
College Physician



Sunshine on Lake Wells



COACH SMITH

Division of Languages

FREDING D. RUSSELL
Associate Professor, English

ROBERT F. DONALDSON, JR.
Assistant Professor, English

MRS. MARJORIE GUARDIA
Assistant Professor, English

MAMIE JO JONES
Associate Professor, Speech

MARVIN A. OWINGS
Assistant Professor, English

DAMON TURNER
Assistant Professor, Languages

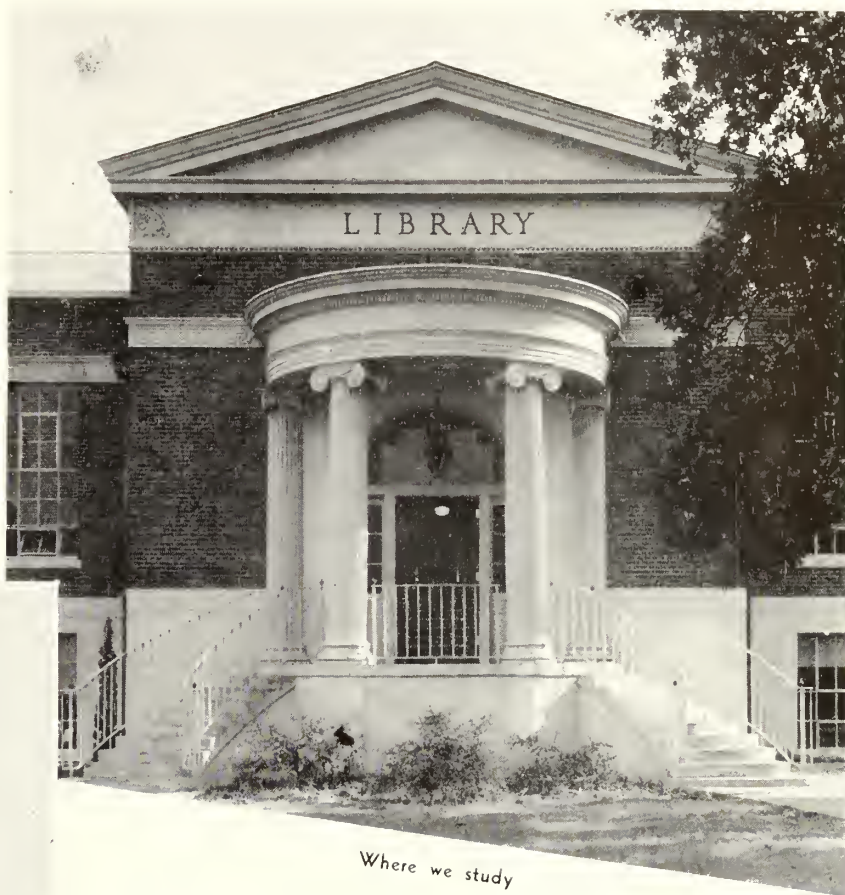
MR. RUSSELL



Department of Library Science

WENDELL WAYNE SMILEY
Librarian

ZULIENE LANE
HASSIE MAUDE McELVEEN
ELEANOR RAY
MRS. MILDRED WHEATLEY
Assistant Librarians



Where we study

MR. SMILEY

Division of Exact Sciences

WILLIAM S. HANNER
Chairman, Associate Professor

W. B. MOYI
Assistant Professor

R. D. PULLIAM
Assistant Professor

PAUL THOMPSON
Instructor

MALVINA TRUSSELL
Associate Professor

Z. S. HENDERSON
VIOLA PERRY

MR. HANNER





It's Always Fair Weather

OUR PARENTS, those professors and instructors who have directed our studies, are pictured seated on these pages. They have quizzed us. . . . They have flunked us . . . at times they have even bored us. Nevertheless, we realize that they liked us and really were concerned about



When Our Family Gets Together

our welfare. They have brought us victoriously through many dreary days of academic drudgery. And we'll not forget T. C.—a place where faculty members meet students on a basis of cordiality and genuine friendship. If we succeed in any way, we know they will be proud of us.



It's time for classes!

COMING from all over our beloved Peach State and other states as well, the children in our home are exceptional in many ways. First, they are exceptional in looks—just take a look at them! Next, in ability. Usually about fifty of them make the Dean's List, though the fifty varies from quarter to quarter. This is an index to the amount of time spent in studying as well as ability. Then, in personality. There are so many vivid and interesting personalities in the home that the children want to spend all of their time in the company of others. And then, in friendliness, in loving-kindness, unselfish service and countless other things, they are exceptional. Each child is helped by association with the other children and each child is thankful at having Georgia Teachers College as his home.



The CH



Has the bell rung yet, Meg?



Oh, it's hard to get up!

L D R E N

SENIOR

OFFICERS

BILLY TALBERT . . . President
 NICHOLAS DUNBAR . Vice-President
 IRA LOIS BROWN . . . Secretary
 DOROTHY CROMLEY . . . Treasurer
 BILL CHAMBLESS } Student Council
 LORRAINE BROCKETT } Representatives
 EDWARD CARRUTH }
 MISS SUE HAMMACK . . . Sponsor



Top row: Dunbar, Cromley, Talbert, Brown. . . . Bottom row: Chamblless, Hammack, Carruth, Brockett.

CLASS SONG

*True and loyal Seniors, we
 Bid farewell to old T. C.,
 While our hearts with her remain
 'Til some day we meet again.*

*Nineteen-forty bids us go
 From our school and friends we know.
 G. T. C. shall linger high
 In our hearts and never die.*

CHORUS:

*Sing farewell, farewell to thee,
 As we pledge our loyalty.
 Peace and friendship ever be.
 G. T. C. forever!*

Words and music by WINONA and MARION CARPENTER

HERE are the "young ladies" and "young men" of the family—those sons and daughters who are ready to leave the comforts of home and the family fireside to go out into the world to 'seek their fortunes.'

Perhaps sometimes they have wondered where they will be next year but they have no cause for fear because they go out well-prepared and well-trained to carry the torch of progressive education a little higher, a little further. However, they have not been too busy wondering along this line to play a most important role in trying to improve the life and the activities of all the children in the home. The major responsibilities of the family and running its activities have been in their hands and they have triumphed over obstacles and difficulties in carrying these out to the best of their abilities. Each son and each daughter who leaves the home has the sincere and heartfelt wishes of the entire family for success.

EDWARD AGUIRRE

Cienfuegos, Cuba

SOCIAL STUDIES

JAMES W. ALDRED

Statesboro, Ga.

INDUSTRIAL ARTS

Iota Pi Nu, Historian, 4; Industrial Arts Club, 3, 4, Vice-President, 4; Band, 1, 2.

THOMAS HENDRY BAGLEY, JR.

Hinesville, Ga.

GENERAL SCIENCE

Bugger-Dagger; Bachelors, 1, 2, 3, 4, Vice-President, 4, Varsity Basketball, 1, 2, 3, 4; Track 1; Intramural Softball Champs, 2; Intramural Football Champs, 4; Sports Editor *George-Anne*, 4; House Council, 4.

ASA BARNARD

Glennville, Ga.

SOCIAL SCIENCE

Bugger-Dagger; International Relations Club, 3, 4; Freshman Commission, 1; Y. M. C. A., 1, 2, 3, 4; Forensic Council, 3; Vesper Choir, 3; Industrial Arts Club, Secretary, 4; C. P. T. Aviation, 4.

GEORGE EDWARD BODDIFORD

Sylvania, Ga.

INDUSTRIAL ARTS

Industrial Arts Club, Secretary; Y. M. C. A.

MARGARET E. BODDIFORD

Sylvania, Ga.

HOME ECONOMICS

Home Economics Club, 1, 2, 3, 4; Science Seminar; Y. W. C. A.; Transfer, University of Georgia.



AGUIRRE

ALDRED

BAGLEY

BARNARD

BODDIFORD, G.

BODDIFORD, M.



CLASS

BOOKER

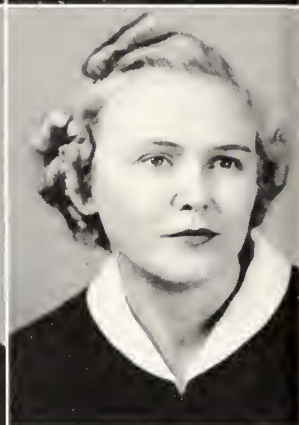
BOWEN

BRAGG

BREEN

BROCKETT

BROWN



TED WILSON BOOKER

Macon, Ga.

MUSIC

Iota Pi Nu, Treasurer, 4; Mu Sigma, 4, President, 4; Transfer, Middle Georgia College; Glee Club, 2, 3, 4; Soloist, 2, 3, 4; Band, 2, 3, 4; Vesper Choir, 2, 3, 4; Student Director, 3; Program Chairman Vespers, 4; Symphony Orchestra, 2, 3; I. R. C., 3; Dramatic Club, 4; Forensic Council, President, 3; Music Club, 3, 4, President, 3, 4; Director "The Teachers Dance Orchestra"; Y. M. C. A., 2, 3, 4, Vice-President, 3; Editor-in-Chief "T" Book, 2.

ELIZABETH HELEN BOWEN

Register, Ga.

ELEMENTARY EDUCATION

Transfer, G. S. W. C.

I. W. BRAGG, JR.

Gray, Ga.

INDUSTRIAL ARTS

Iota Pi Nu; Band, 1, 2, 3; Boxing Team, 2.

ELIZABETH ANN BREEN

Jesup, Ga.

HOME ECONOMICS

Epicurean, Chaplain, 2, 3, President, 4; Freshman Commission; Home Economics Club, 1, 2, 3, 4, Vice-President, 2, President, 3, 4; President East Hall, 3; May Court, 3; Honors Day, 3; Pan-Hellenic Council, 4; REFLECTOR Staff, 4; Who's Who in American Colleges and Universities, 4.

EDNA LORRAINE BROCKETT

Bainbridge, Ga.

ENGLISH

Lambda Theta Chi, Secretary, 2, Treasurer, 4; Freshman Commission; I. R. C., 3, 4; Home Economics Club, 4; English Club, 3, 4; Dramatic Club, 4; *George-Anne* Staff, 4; REFLECTOR Staff, 4; Student Council Representative, Senior Class, 4; Honors Day, 2, 3.

IRA LOIS BROWN

Leslie, Ga.

ENGLISH

"X" Club; Transfer, G. S. W. C.; Class Secretary, 4; Lewis Hall House Council, 3, 4, Secretary, 4; Y. W. C. A. Cabinet, 4; English Club, 3, 4; I. R. C., 3, 4; Chorus 3, 4.

ROBERT JUDSON BROWN

Statesboro, Ga.

GENERAL SCIENCE

Delta Sigma; Science Club; President Bird Club, 4; Day Student; REFLECTOR Staff.

WINONA ALDRED CARPENTER

Statesboro, Ga.

ENGLISH

Delta Lambda Delta, Secretary, 2, Vice-President, 3, President, 4; Pan-Hellenic Council, 3, 4, Vice-President, 4; Mu Sigma, 1, 2, 3, 4; Program Chairman, 4; Band, 1, 2; Symphony Orchestra, 1, 2; English Club, 3, 4; College Dance Orchestra, 1, 2; Dramatic Club, 1; Piano Certificate Recital, 3; Violin Certificate Recital, 4; Dance Club, 2; String Quartet, 1, 2; W. A. A. Council, 3, Vice-President, 3; Booth-Pittman Award, 1; Honored in Dramatics, 1; String Ensemble, 4.

MARION LEE CARPENTER

Statesboro, Ga.

MUSIC

Iota Pi Nu; Band, 1, 2, 3, 4, Assistant Band Director, 1, 2, President, 3; Symphony Orchestra, 1, 2, 3, Director, 2; Mu Sigma Fraternity, 1, 2, 3, 4, Vice-President, 3; Dance Orchestra, 1, 2, 3, 4, Leader, 4.

ROBERT C. CARROLL

Sparta, Ga.

GENERAL SCIENCE

Freshman Commission; Bachelors Club, Secretary, 3, President, 4; Industrial Arts Club, 3, 4, Secretary, 3; Science Seminar, 3, 4; House Council, 2, 3, 4; Royal Order of Bushwhackers; Honors Day, 2, 3; Archery Club, 4; Sports Editor REFLECTOR, 3; Assistant Sports Editor *George-Anne*, 4; President Student Council, 4; Who's Who in American Universities and Colleges, 4.

EDWARD HAMPTON CARRUTH

Statesboro, Ga.

INDUSTRIAL ARTS

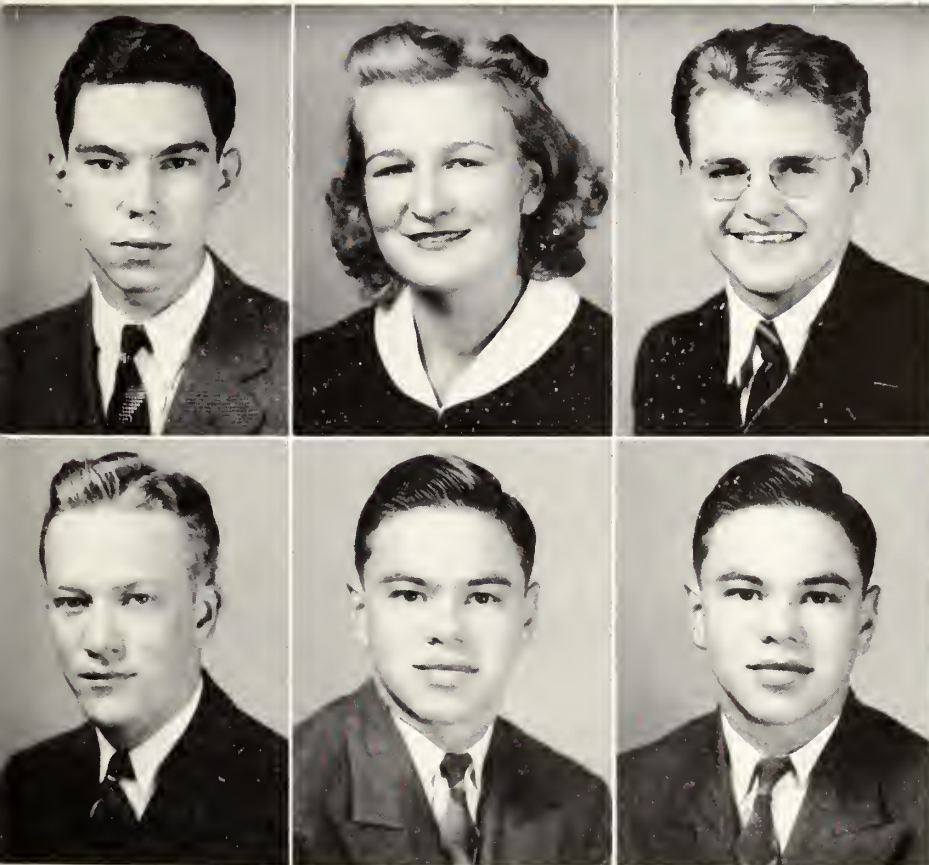
Bugger-Dagger; Band, 1, 2, 3, 4, Publicity Chairman, 4; Orchestra, 1, 2, 3; Chorus, 3, 4, President, 4; I. R. C., 2, 3, 4, President, 4; Freshman Commission; Student Council Representative, 4; Industrial Arts Club, 4; Y. M. C. A., 1, 2, 3, 4; Intramural Football Champs, 2, 3, 4; Business Manager REFLECTOR Staff, 4; College Quartet, 3, 4; Deputation Team, 4; Who's Who in American Universities and Colleges, 4.

WADE CARLTON CARRUTH

Statesboro, Ga.

INDUSTRIAL ARTS

Bugger-Dagger; Band, 1, 2, 3, 4, Vice-President, 4; Chorus, 3, 4; Orchestra, 1, 2, 3; International Relations Club, 2, 3, 4; Industrial Arts Club, 4; Y. M. C. A., 1, 2, 3, 4; Intramural Football Champions, 2, 3, 4; Vice-President Student Council, 4; Business Manager REFLECTOR, 4; College Quartet, 3, 4; Y. M. C. A. Deputation Team, 4; Who's Who in American Universities and Colleges, 4.



BROWN

CARPENTER, W.

CARPENTER, M.

CARROLL

CARRUTH, E. H.

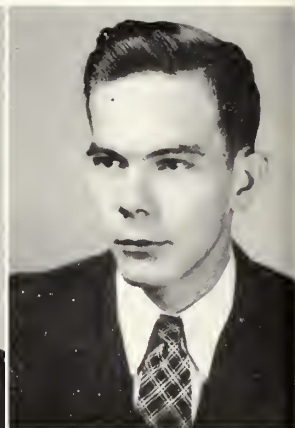
CARRUTH, W. C.

CLASS

CHAMBLESS

CONN

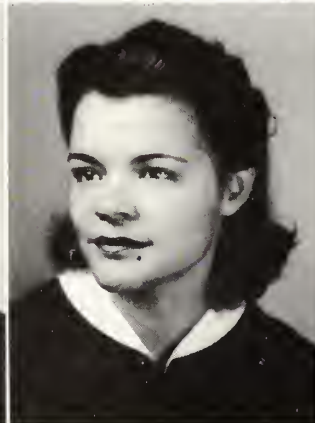
COWART



COX

CROMLEY

DAVENPORT



WILLIAM GEORGE CHAMBLESS

Dawson, Ga.

GENERAL SCIENCE

Bachelors Club; Band, 2, 3, 4; Freshman Commission; Treasurer Student Council, 4; Y. M. C. A. Cabinet, 2, 3, 4, Vice-President, 4; President Band, 3; *George-Anne* Staff, 3, 4; Circulation Manager, 4; Bird Club, 3, 4; Science Seminar, 3, 4; Archery Club, 4.

DOROTHY ALLENE CONN

Mt. Vernon, Ga.

ELIMINARY EDUCATION

Transfer, Brewton-Parker Junior College; Vesper Choir, 3, 4; Dramatic Club, 4; Y. W. C. A., 3.

LEROY COWART, JR.

Atlanta, Ga.

INDUSTRIAL ARTS

Delta Sigma, Secretary, 2, Vice-President, 3, President, 4; Industrial Arts Club, 4; Student Pilot Training, 4; REFLECTOR Staff; Freshman Commission.

THOMAS O. COX

Attapulgus, Ga.

SOCIAL STUDIES

I. R. C., 1, 2, 3, 4.

DOROTHY CROMLEY

Brooklet, Ga.

ELIMINARY EDUCATION

Lambda Theta Chi, Treasurer, 3, Vice-President, 4; Y. W. C. A. Cabinet, 2, Vice-President, 3, President, 4; Home Economics Club, 1, 2; I. R. C., 1, 2; House Council East Hall, 3, 4; Pan-Hellenic Council, 4.

JOUETT DAVENPORT, JR.

Augusta, Ga.

ENGLISH

English Club, 3, 4, Secretary, 3, Vice-President, 4; *George-Anne* Staff, 3; Music Club, 3.

JIMMIE DeLOACH

Pembroke, Ga.

INDUSTRIAL ARTS

Delta Sigma; Industrial Arts Club; Basketball, 2, 3, 4;
House Council, 4.

ADOLPH MILLS DRURY

Brunswick, Ga.

ENGLISH

I. R. C., 3, 4; Y. M. C. A., 3, 4; English Club, 3, 4;
Transfer, South Georgia College.

KATHRYN DUBBERLY

Glennville, Ga.

HOME ECONOMICS

"X" Club, President, 4; Y. W. C. A. Cabinet, 2, 3, 4;
Home Economics Club, 1, 2, 3, 4, Secretary, 4; House
Council, 1, 3, 4; President, West Hall, 3, 4; Science Seminar,
3, 4, Secretary and Treasurer, 3, 4; Bird Club, 3, 4, Secre-
tary and Treasurer, 4; Vesper Choir, 2, 3, 4, Secretary and
Treasurer, 3; I. R. C., 3; Honors Day, 3; English Club, 3;
Administrative Council, 3, 4; Junior Class Treasurer.

NICHOLAS LINES DUNBAR

Millhaven, Ga.

SOCIAL SCIENCE

Bugger-Dagger, Treasurer, 3, President, 4; Vice-President
Senior Class; *George-Anne* Staff, Associate Editor, 3, Editor,
4; Bachelors Club, 3, 4; Dramatic Club, 4; I. R. C., 3, 4;
English Club, 4; Science Seminar, 1; Y. M. C. A.; Intra-
mural Football Champs.

LAURA ELIZABETH FORD

Sylvester, Ga.

ENGLISH

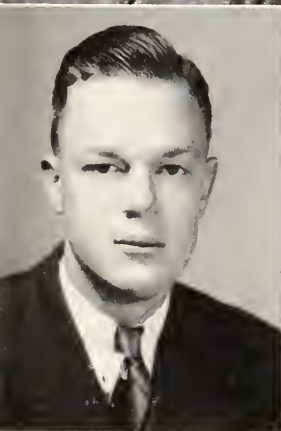
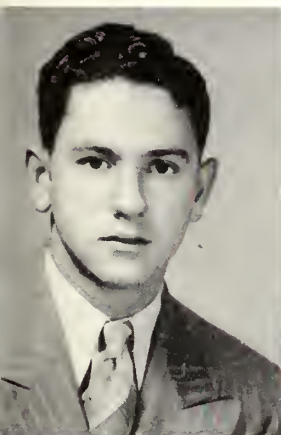
House Council, 4; English Club, 3, 4; Y. W. C. A., 3, 4;
Transfer, Georgia Southwestern College.

MARJORIE FOREHAND

Pinchurst, Ga.

HOME ECONOMICS

Delta Lambda Delta, Secretary, 4; House Council, 4; Home
Economics Club, 3, 4; Transfer, Middle Georgia College.



DeLOACH

DRURY

DUBBERLY

DUNBAR

FORD

FOREHAND



CLASS

GARDNER

GIRARDEAU

GRIFFIN

GUNBY

GUNTER

HAMILL



KATHRYN ELIZABETH GARDNER

Ellabelle, Ga.

ENGLISH

George-Anne Staff, 3, 4; Dance Club, 2, 3, 4; W. A. A. Council, 1, 2, 3, 4; English Club, 4; Y. W. C. A.

THETA GUNBY

Statesboro, Ga.

ELEMENTARY EDUCATION

Day Student.

MIRIAM LOYD GIRARDEAU

Claxton, Ga.

ENGLISH

Dux Domina, Secretary, 2; President Freshman Commission; Y. W. C. A. Cabinet, 2, 3, 4, Secretary, 4; I. R. C., 2, 3, 4, Secretary and Treasurer, 3, 4; Class Secretary, 2, 3; House Council, 1, 3, 4, Vice-President, 4; W. A. A. Council, 3, 4, Secretary-Treasurer, 3; May Court, 3; Student Council, Secretary, 3, 4; *George-Anne* Staff, 3, 4; Literary Editor, REFLECTOR; Who's Who Among Students in American Universities and Colleges, 4.

MARY EDNA GUNTER

Louisville, Ga.

ENGLISH

Epicurean, Secretary, 4; Freshman Commission; May Court, 1, 3; Honors Day, 2, 3; English Club, 3, 4, Treasurer, 4; W. A. A. Council, 2, 3, 4, President, 4; Dramatic Club, 4; Vesper Choir, 4; Y. W. C. A. Cabinet, 4

GLYNNIE GRIFFIN

Newton, Ga.

ELEMENTARY EDUCATION

Day Student.

HERCHEL ALWYN HAMILL

Arlington, Ga.

INDUSTRIAL ARTS

Iota Pi Nu, Vice-President, 4; Track, 1, 2; Basketball, 1, 2, 3; Football, 2, 3, 4; Y. M. C. A.

HUGH HODGES

Guyton, Ga.

GENERAL SCIENCE

Iota Pi Nu; Bird Club, 3, 4; Science Seminar, 3, 4, Chairman, 4; Bachelors; House Council, 4.

LAURA HODGES

Guyton, Ga.

ENGLISH

English Club, 3, 4; Bird Club, 3, 4; Y. W. C. A.; Vesper Choir, 3.

JOE R. JOYNER

Screven, Ga.

GENERAL SCIENCE

Delta Sigma, Vice-President, 4; Bachelors Club, 3, 4; I. R. C., 2; Y. M. C. A., 2, 3, 4; Football, 2, 3, 4; Student Council Representative Freshman Class; President Sophomore Class; President Sanford Hall, 4.

JULIAN CURTIS LANE

Statesboro, Ga.

HISTORY

Delta Sigma; Glee Club, 3, 4; Transfer, Georgia Military College.

ROSE LOCKHART

Statesboro, Ga.

SOCIAL SCIENCE

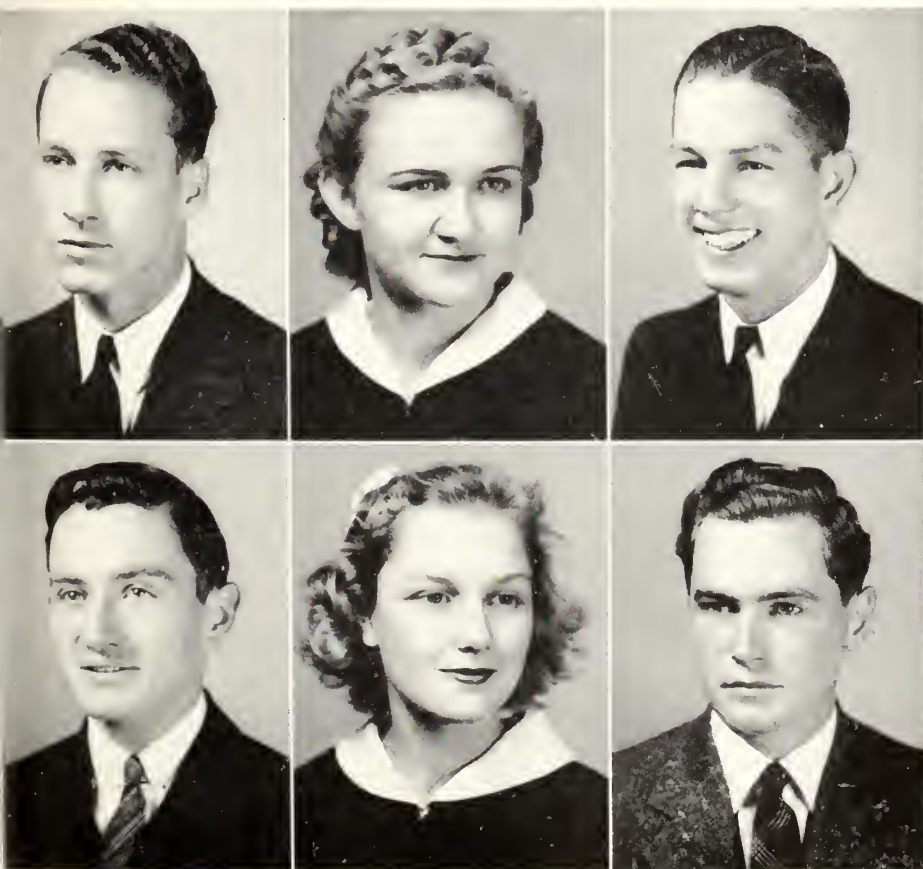
Dux Domina, Vice-President, 4; Assistant Business Manager *George-Anne*, 1; May Court, 1; Y. W. C. A., 3, 4; Beauty Section 3, 4; Secretary Dramatic Club, 4; I. R. C., 4; Pan-Hellenic Council, 4; Social Editor *George-Anne*, 4; Iota Pi Nu Sponsor, 4; May Queen, 4.

HUGH CLYDE MAXWELL, JR.

Climax, Ga.

SOCIAL STUDIES

Iota Pi Nu, Chaplain, 4; Band, 3, 4, President, 4; Transfer, Georgia Southwestern College.



HODGES, H.

HODGES, L.

JOYNER

LANE

LOCKHART

MAXWELL



CLASS

MILLER

NEVILLE

PAGE

PAGETT

PITTMAN, M.

PITTMAN, N.



JANE ELIZABETH MILLER

Savannah, Ga.

ENGLISH

English Club, 3, 4; House Council, 3, 4, Vice-President West Hall, 4; Transfer, Armstrong Junior College.

MATTIE LEE PAGETT

Gordon, Ga.

ENGLISH

Sigma Gamma, President, 4; Band, 4; Science Seminar, 4; Bird Club, 4; English Club, 4; *George-Anne* Staff, 4; Y. W. C. A., 4; Bugger-Dagger Sponsor, 4; Transfer, Andrew College.

GESMON NEVILLE

Statesboro, Ga.

Band, 1, 2, 3, 4; Symphony Orchestra, 1, 2, 3, 4; Forensic Council, 3, Secretary, 3.

MILDRED ANNETTE PITTMAN

Savannah, Ga.

ELEMENTARY EDUCATION

Glee Club, 3; I. R. C., 3, 4.

CORA OLIVER PAGE

Fairmont, N. C.

ELEMENTARY EDUCATION

Band, 1, 2, 3, 4; Orchestra, 1, 2, 3, 4; Music Club, 2, 3, 4; Reporter *George-Anne* Staff; Treasurer Orchestra, 3; Home Economics Club, 2, 3; House Council, 1, 2, 3; Y. W. C. A., 2, 3, 4.

NELL PITTMAN

Americus, Ga.

ELEMENTARY EDUCATION

"X" Club; Chorus, 3; Transfer, Georgia Southwestern College.

JANE AUGUSTA POOL

Guyton, Ga.

ENGLISH

Lewis Hall House Council, 3, 4, Secretary, 3; English Club, 3, 4, Secretary, 4; Glee Club, 3, 4; Beauty Section, 3; Associate Editor REFLECTOR, 4; Transfer, Bessie Tift College.

MERLE ANNE POWELL

Swainsboro, Ga.

ENGLISH

Dux Domina; Glee Club, 3; Home Economics, 3, 4; English Club, 3, 4; Transfer, University of Georgia.

BERTON HUGH RAMSEY

Statesboro, Ga.

CHEMISTRY

Delta Sigma, President, 3, Secretary, 2, 4; Bachelors Club; Student Council Representative, 1, 3; Freshman Commission, 1; President Sophomore Class; Science Seminar, 3, 4, Chairman, 4; Y. M. C. A., Deputation Team, 4.

JOHN S. ROBERTS, JR.

Matthews, Ga.

GENERAL SCIENCE

Archery Club, 4; Y. M. C. A., 3, 4, Secretary, 4; Vesper Choir, 3, 4; Glee Club, 3, 4, Secretary, 4; Men's Chorus, 4; The College Quartet, 3, 4; Transfer, Emory Junior College.

GENE STRATTON RUSHING

Statesboro, Ga.

SOCIAL SCIENCE

"X" Club; Freshman Commission; Business Certificate, 1; Day Student.

SARAH DORIS SANDS

Daisy, Ga.

ELIMENTARY EDUCATION

Dux Domina, Treasurer, 2, Chaplain, 3, 4; East Hall House Council, 4.



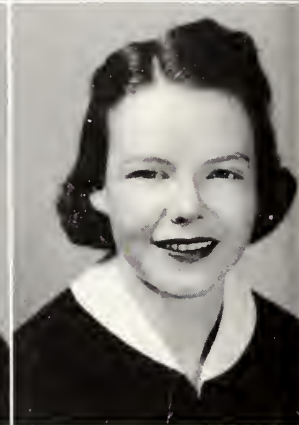
POOL
POWELL
RAMSEY
ROBERTS
RUSHING
SANDS



CLASS

SLAYDEN
SMITH
STRICKLAND

TALBERT
TANNER
THAYER



HERBERT LEE SLAYDEN
Lyons, Ga.
GENERAL SCIENCE
Transfer, Gordon Junior College.

SALLIE SMITH
Statesboro, Ga.
ENGLISH

"X" Club, Vice-President, 4; I. R. C., 1, 2, 3; Home Economics Club, 2; Honor Student, 1; Vice-President Junior Class; Vice-President Lewis Hall House Council, 3, President, 4; English Club, 3, 4, President, 4.

SYBIL STRICKLAND
Sylvania, Ga.
ENGLISH

Dux Domina, Vice-President, 3, Treasurer, 4; W. A. A. Council, 3; Pan-Hellenic Council, 3, 4; Home Economics Club, 3; Dramatic Club, 3; English Club, 4; Beauty Section, 4; Transfer, University of Georgia.

WILLIAM G. TALBERT
Colquitt, Ga.
GENERAL SCIENCE

Iota Pi Nu, President, 4; President Senior Class; Science Seminar, 3, 4; House Council, 4; Basketball, 3; Student Council, 1, 4; Transfer, Georgia Southwestern College.

JORDYE TANNER
Macon, Ga.
ELEMENTARY EDUCATION

Glee Club, 4; Pianist Vesper Choir; Transfer, Bessie Tift College.

GLADYS THAYER
Statesboro, Ga.
MUSIC

Delta Lambda Delta; Mu Sigma, 1, 2, 3, 4; Day Student.

ERNEST LAMAR TROWELL

Oliver, Ga.

INDUSTRIAL ARTS

Y. M. C. A.; Industrial Arts Club, 2, 3, 4, President, 4;
I. R. C., 3; House Council, 4.

JEWELL VANDIVER

Summit, Ga.

GENERAL SCIENCE

Lambda Theta Chi; Vice-President Freshman Commission;
Vice-President L. T. C., 2, President, 4; Pan-Hellenic
Council, 2, 3, 4, Secretary, 3, President, 4; Y. W. C. A.
Cabinet, 2, 3, 4, Vice-President, 2, Treasurer, 4; House
Council, 1, 2, 3, 4; Vice-President Lewis Hall, 4; Treasurer
Sophomore Class; Student Council Representative, 3; Honor
Economics Club, 1, 2; Dramatic Club, 1, 2, Secretary, 2;
I. R. C., 1, 2, 3; Glee Club, 2; Science Seminar, 3, 4; Presi-
dent Bird Club, 3; Dance Club, 2, 3; Editor REFLECTOR, 4;
Archery Club, 4.

MRS. ALMA WADSWORTH

Millen, Ga.

SOCIAL STUDIES

Day Student.

CLIFFORD E. WELLS

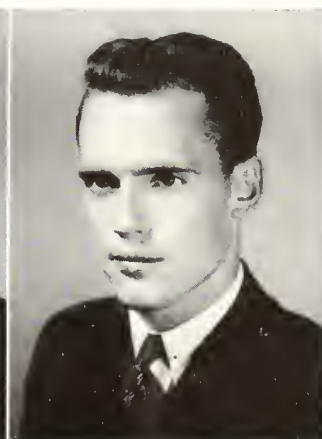
Climax, Ga.

SOCIAL SCIENCE

Bugger-Dagger, President, 4; Y. M. C. A.; Intramural
Football Champs; Transfer, Georgia Southwestern College.



WADSWORTH



WELLS



TROWELL



VANDIVER



The JUNIOR



OFFICERS

D. R. BARBER	<i>President</i>
FRANCES DEAL	<i>Vice-President</i>
EMOLYN RAINY	<i>Secretary</i>
FRANCES BREIN	<i>Treasurer</i>
BURDELL HARRISON	<i>Student Council Representative</i>
HERMAN WRINKLE	<i>Student Council Representative</i>
MISS LILLIAN HOGARTH	<i>Sponsor</i>

THE CHILDREN who comprise the mainspring of the family are the Juniors. They have belonged in the home long enough to have a part in all activities. Much of the responsibility in running the affairs of the home is theirs and they can always be depended on to run them well.

By the time the children reach this stage, they begin to realize how little they know, but along with this realization is a self-assurance unequaled by any of the other children. Unlike their elders, the seniors, they know they will be back next year if possible and they have acquired a humility and a sincerity and depth of purpose that their younger brothers and sisters lack as yet.

All the members of the family regret exceedingly that D. R., one of the biggest of the B. M. O. C.'s, will not be back next year. May he and all the juniors go forward always, progressing according to their deserts, which are to say the least, great.



CLASS

FAY ALDERMAN Americus, Ga.
"X"

EMMA JANE AUTRY Guyton, Ga.

JOHN BEN AYERS Canon, Ga.

T. A. BACON Manassas, Ga.

D. R. BARBER, JR. Bainbridge, Ga.
Delta Sigma

CARROLL BEASLEY Statesboro, Ga.

MARGARET BENNETT Jesup, Ga.

DOROTHY BERRY Columbus, Ga.
Sigma Gamma

HOMER BLITCH Statesboro, Ga.

MARJORIE BOATRIGHT Claxton, Ga.

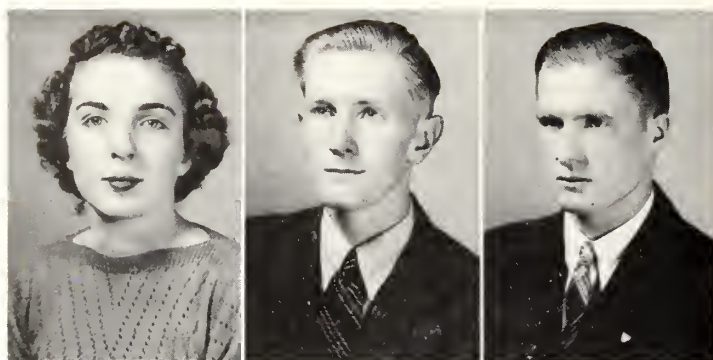
ELLIOTT BOSWELL Crawfordville, Ga.

JOY BOWDEN Columbus, Ga.
Sigma Gamma



Junior

JENNIE BRANNEN . . . Hazlehurst, Ga.
 ALBERT BRASWILL . . . Statesboro, Ga.
Delta Sigma
 HERMAN BRAY . . . Oglethorpe, Ga.



FRANCES BREEN . . . Jesup, Ga.
Epicurean
 MARJORIE BREWER . . . Patterson, Ga.
"X"
 MIRIAM BRINSON . . . Miller, Ga.
Epicurean



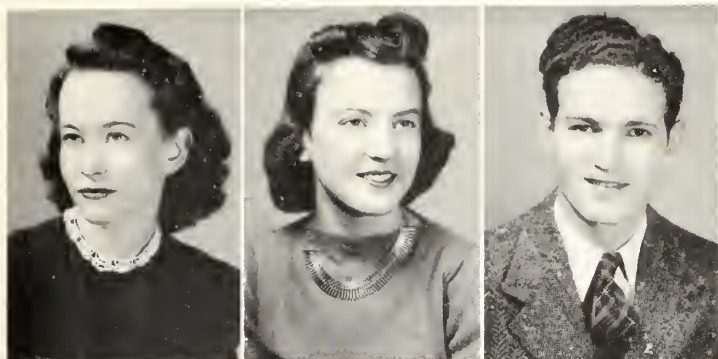
EARL BYRD . . . Patterson, Ga.
 JANETTA CALDWELL . . . Gay, Ga.
"X"
 A. W. COOPER . . . Myrtle Beach, S. C.



WINIFRED CORBETT . . . Pearson, Ga.
Delta Lambda Delta
 WILLIAM COX . . . Dawson, Ga.
 CURTIS CROOK . . . Thomson, Ga.
Delta Sigma



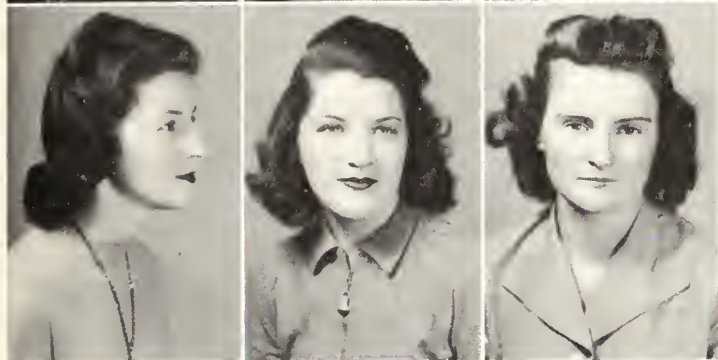
Juniors



EDITH DAVIS Patterson, Ga.

FRANCES DEAL Statesboro, Ga.
Epicurean

T. C. DINMARK, JR. Claxton, Ga.



AGNES DENNARD Pineview, Ga.
Delta Lambda Delta

BELVA DICKSON Hephzibah, Ga.
Delta Lambda Delta

ERNESTINE DRIGGERS Statesboro, Ga.



DOROTHY DURDEN Statesboro, Ga.

DOROTHY ELKINS Sandersville, Ga.

LOUISE ELKINS Sandersville, Ga.



REESE ELLISON Americus, Ga.

JULIAN EUBANKS Augusta, Ga.

CHESS FAIRCLOTH Statesboro, Ga.

MILTON FINDLEY Lyons, Ga.
Bugger-Dagger

MERVIN FUTRAL Bartow, Ga.

CATHIRINE GAINES Bainbridge, Ga.
Dux Domina

J. A. GARDNER, JR. Pulaski, Ga.

IRMA GLISSON Vidalia, Ga.

EMILY GOFF Statesboro, Ga.

DOROTHY GOODE Bronwood, Ga.
"X"

D. B. GOULD, JR. Statesboro, Ga.

TOMMIE GRAY Waynesboro, Ga.
Epicurean

GERALD GROOVER Statesboro, Ga.
Delta Sigma

EULA GWINES Sylvester, Ga.

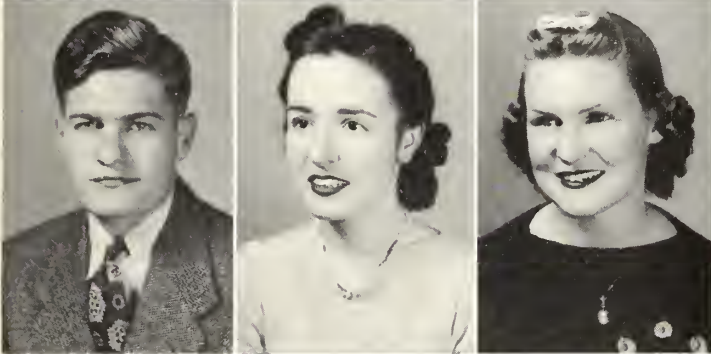
BURDELLE HARRISON Halcyondale, Ga.
"X"



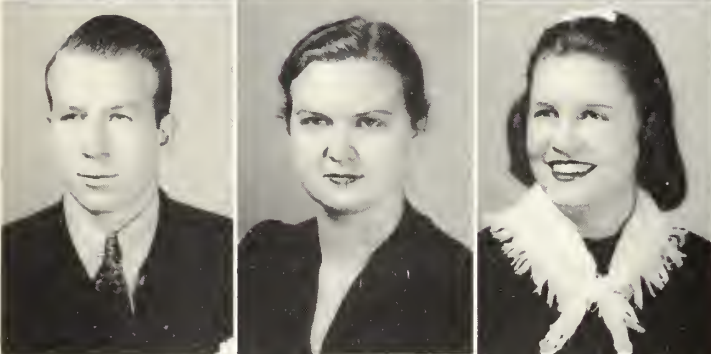
Juniors



CALVIN HARRISON . . . Brooklet, Ga.
ROBERT HERMAN HARTLEY . . . Tennille, Ga.
VIRGINIA HILL . . . Hilltonia, Ga.



KRANSON HOLLOWAY . . . Swainsboro, Ga.
Delta Sigma
ELIZABETH HORN . . . Bainbridge, Ga.
Dux Domina
FRANCES HUGHES . . . Brooklet, Ga.
Epicurean



JOHN E. KING . . . Hazlehurst, Ga.
Iota Pi Nu
MATILDA LANG . . . Waverly, Ga.
MYRTLE LARISCY . . . Sylvania, Ga.
Dux Domina



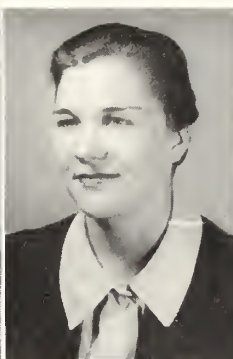
MILDRED MANGHAM . . . Americus, Ga.
HORACE McDOUGALD . . . Statesboro, Ga.
BETTIE McLEMORE . . . Statesboro, Ga.
Lambda Theta Chi

Junior

CLIO McLIOD Pineview, Ga.
Dux Domina

MATILDA E. McNALLY . Chickamauga, Ga.

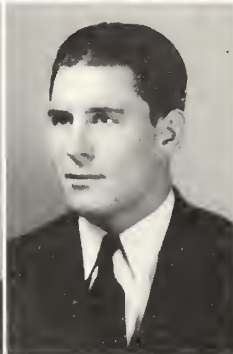
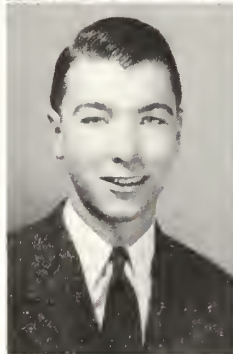
JULIA MIADOWS Vidalia, Ga.
Lambda Theta Chi



JAMES A. MOORE Collegeboro, Ga.

ROBERT C. MOSS Doerun, Ga.

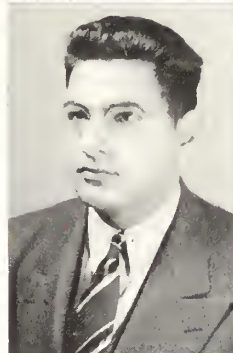
RUTH EVANS MURPHEY . Hephzibah, Ga.
Sigma Gamma



EDDIE NAJJAR Cedartown, Ga.

KATRENA NESMITH . . . Groveland, Ga.

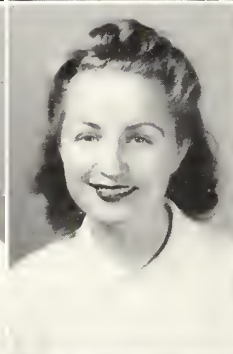
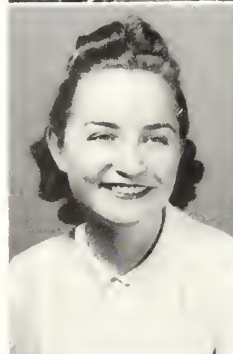
LILA MAE NESMITH . . . Statesboro, Ga.



JESSIE S. NEVIELE Statesboro, Ga.

MARGUERITE NEVILLE . . . Statesboro, Ga.

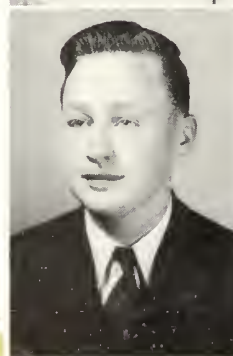
GEORGE PAFFORD Homerville, Ga.



GEORGE E. PARKER . . . Woodcliff, Ga.

HOWELL PERRYMAN . . . Cedartown, Ga.
Iota Pi Nu

COLBERT PURVIS Odum, Ga.



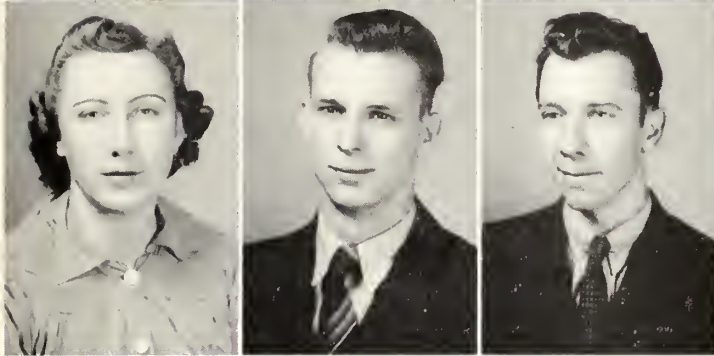
Juniors



EMOLYN RAINY . . . Columbus, Ga.
Lambda Theta Chi

BILL TOM REEVES . . . Newton, Ga.

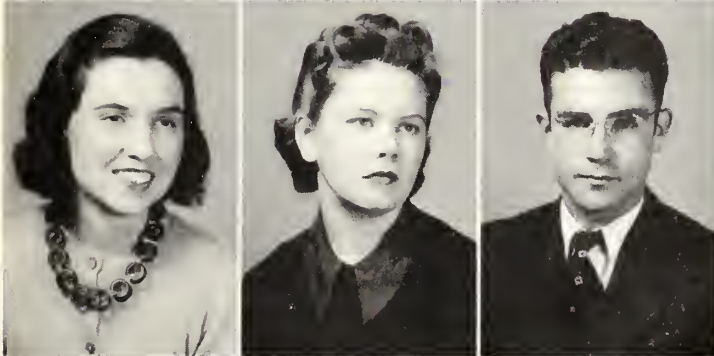
OLIVE REPPARD . . . Fitzgerald, Ga.
Sigma Gamma



LOUISE ROBERTS . . . Sandersville, Ga.

A. H. ROCKIE . . . Metter, Ga.

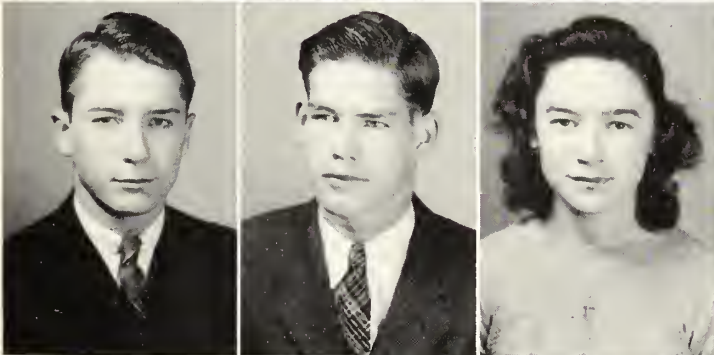
ELBERT C. SANDERS . . . Pembroke, Ga.



FRANCIS SEWARD . . . Savannah, Ga.

MRS. BETTY JOSEY SMITH . Statesboro, Ga.
Lambda Theta Chi

CHARLES STANFIELD . . . Glennville, Ga.
Bugger-Dagger



JAMES JEKES TAYLOR . . . Savannah, Ga.

JAMES E. THAYER . . . Statesboro, Ga.
Delta Sigma

DORIS LOUISE TONEY . . . Americus, Ga.
Sigma Gamma; "X"



TOM VANDIVER . . . Summit, Ga.
Delta Sigma

JEANETTE WILLIAMS . . . Eatonton, Ga.

HERMAN WRINKLE . . . Dalton, Ga.
Iota Pi Nu

The SOPH

OFFICERS

JOE INGRAM	<i>President</i>
ROY PAYTON WARRIN	<i>Vice-President</i>
AZILI HARTLEY	<i>Secretary-Treasurer</i>
DAVID BOWMAN	<i>Student Council Representative</i>
MR. E. D. TURNER	<i>Sponsor</i>

Standing: Turner, Hartley, Warren. . . . Seated: Bowman, Ingram.



OUR SOPHOMORES correspond to those children who have passed from the stage of helpless babyhood and are so conscious of this fact that they consider themselves quite "grown-up." Long since have they undergone those stages of unawareness and ignorance so characteristic of the younger children. They have become sophisticated to the nth degree; in fact, they think they know it all.

These children, 'wise fools' though they may be, begin to assume a definite responsibility in college activities and to formulate personal goals they wish to achieve, thus making it evident that they are not incurable sophomores. They look backward with both thankfulness and regret that their freshman year is over and they look forward with a joyful hope to all their junior year may have in store for them.

Sheldon Chapman, Student Council Representative of the class, was not in school the winter quarter and his picture is not presented here. However, none of the children will have difficulty in recalling the pleasant countenance which reflected such a worthy character and likable personality.

ORE CLASS

W. B. AKINS Register, Ga.

T. EDWARD ALLEN Eastman, Ga.

ONA DELL ALTMAN Alma, Ga.

THERON ANGLIN Wadley, Ga.

Bugger-Dagger

MAGGIE ARNETTE Sylvania, Ga.

MARJORIE BACON Willie, Ga.

KENNETH R. BANDY Ringgold, Ga.

WILLIAM E. BARFIELD Perry, Ga.

Iota Pi Nu

JOHN P. BLANCHARD Appling, Ga.

SARAH REID BOWEN Register, Ga.

Lambda Theta Chi

DAVID S. BOWMAN Bronwood, Ga.

Iota Pi Nu

MORGAN L. BRANNIN Register, Ga.

LOIS BREWTON Groveland, Ga.

LUTIE BRIWTON Daisy, Ga.

LUCY BRINSON Woodcliff, Ga.

ISAAC BUNCE Statesboro, Ga.

JIMMIE BUNCE Statesboro, Ga.

RACHEL BURNETTE Lumber City, Ga.

HARRY S. BURNIY Bainbridge, Ga.

ELIZABETH CATO Ellabelle, Ga.

MRS. A. L. CLARK Statesboro, Ga.



Front row: Akins, Allen, Altman, Anglin, Arnette, Bacon, Bandy. . . . Second row: Barfield, Blanchard, Bowen, Bowman, Brannen, Brewton, Lutie; Brewton, Lois. . . . Third row: Brinson, Bunce, I.; Bunce, J.; Bunette, Burney, Cato, Clark.



First row: Claxton, Cobb, Coleman, Cone, H.; Cone, R.; Conoly, Darley. . . . Second row: Dorsey, Davidson, Denitto, Dial, Dorminy, Douglas, Dunn. . . . Third row: Durrence, Eason, M.; Eason, V.; Eason, W.; Enlowe, Everett, Feaster.

● T H E S O P H O M O R E S

LYNNIE PAUL CLAXTON Kite, Ga.

Sigma Gamma

MARJORIE E. COBB Bainbridge, Ga.

Dux Domina

JOSEPHINE COLEMAN Cobbtown, Ga.

JOHN HENRY CONI Statesboro, Ga.

RUTH CONI Brooklet, Ga.

"X"

JAMES C. CONOLY Waycross, Ga.

Delta Sigma

EVELYN C. DARLEY Statesboro, Ga.

SARA WILL DARSEY Hinesville, Ga.

FIRALYN M. DAVIDSON Rentz, Ga.

CLOTHILDE DENITTO Brooklet, Ga.

SARA ELIZABETH DIAL Walnut Grove, Ga.

MYRTLE OPHELIA DORMINY Fitzgerald, Ga.

BARCLAY L. DOUGLAS, JR. Savannah, Ga.

Delta Sigma

JOHN H. DUNN Devercux, Ga.

Bugger-Dagger

ELVA WYNETTE DURRENCE Mendes, Ga.

ALICE MONTEEN EASON Surrency, Ga.

VIRGINIA EASON Reidsville, Ga.

WYNELLIE EASON Surrency, Ga.

LAWRENCE E. ENLOWE Atlanta, Ga.

GRACE EVERETT Oliver, Ga.

JOSEPH E. FEASTER Bath, S. C.



First row: Fisher, Flynt, Forehand, Fulcher, Funderburke, Gay, Godbee. . . . Second row: Gooden, Graham, Griffin, Griner, Groover, B.; Groover, F. E.; Groover, F. . . . Third row: Groover, K.; Groover, R.; Hall, Hallman, Harrison, F.; Harrison, M.; Hart

M O R E C L A S S

DOROTHY FISHER Reidsville, Ga.
Sigma Gamma

MARJORIE FLYNT Metter, Ga.

SARA E. FORHAND Sylvester, Ga.

ANN FULCHER Waynesboro, Ga.
Epicurean

MELBA FUNDERBURKE Cobbtown, Ga.

LETA GAY Garfield, Ga.

SARA ELIZABETH GODBEE Sardis, Ga.
Dux Domina

CAROLYN GOODEN Willie, Ga.

MARY GRAHAM McRae, Ga.
Delta Lambda Delta

BERNICE GRIFFIN Sylvania, Ga.

ROBERT L. GRINER Sylvania, Ga.

BESSIE GROOVER Statesboro, Ga.

FRED ELMER GROOVER Statesboro, Ga.

FRANCIS GROOVER Stilson, Ga.

M. KATHLEEN GROOVER Ochlochnee, Ga.
Sigma Gamma

RUTHIE LEE GROOVER Statesboro, Ga.

JAMES D. HALL Norman Park, Ga.

WYLLISS E. HALLMAN Valdosta, Ga.

FRANCES E. HARRISON West Point, Ga.
Lambda Theta Chi

MRS. MARTHA HARRISON Sandersville, Ga.

DANIEL R. HART Statesboro, Ga.



First row: Hart, R.; Hartley, Heath, Heidt, Hendrix, Hill, Holland. . . . Second row: Holloway, A.; Holloway, E.; Humphrey, Hursey, Hurst, Ingram, Jackson. . . . Third row: Jenkins, T.; Jenkins, V.; Johnson, Johnston, Jones, Jordan, Kammerer.

● T H E S O P H O M O R E S

RUTH HART Statesboro, Ga.

AZILE HARTLEY Miami, Fla.
Sigma Gamma; "X"

COY L. HEATH Bainbridge, Ga.

LORINE J. HEIDT Marlow, Ga.
Sigma Gamma

GORDON HENDRIX Statesboro, Ga.

JANE ISABEL HILL Washington, Ga.

ROGER J. HOLLAND Statesboro, Ga.

ANNIE WILH HOLLOWAY Register, Ga.

EULA MAE HOLLOWAY Graymont, Ga.

FLOYD HUMPHREY Sycamore, Ga.

MARY ANNA HURSEY Statesboro, Ga.

JOE C. HURST Egypt, Ga.

JOSEPH INGRAM Nelson, Ga.
Iota Pi Nu

TRAVIS V. JACKSON Dublin, Ga.

THOMAS G. JENKINS Edison, Ga.
Iota Pi Nu; Bugger-Dagger

VIRGINIA L. JENKINS Alma, Ga.

HORACE G. JOHNSON, JR. Swainsboro, Ga.
Iota Pi Nu

MARGARET ANN JOHNSTON Statesboro, Ga.
Epicurean

EULA BETH JONES Marshallville, Ga.
Lambda Theta Chi

FRANK J. JORDAN Brooklet, Ga.
Delta Sigma

RUTH KAMMERER Brunswick, Ga.
Sigma Gamma; "X"



First row: Keefe, Kemp, Kennon, Kent, Kicklighter, Lane, Lever. . . . Second row: Lichenstein, Martin, Mason, Matthews, McCarty, McCollum, McDaniel. . . . Third row: McElveen, McGowan, Miller, Mincey, Mixon, Mizell, Morgan.

ORE CLASSES

GERALDINE KEEFE Waycross, Ga.

PILCHER KEMP Statesboro, Ga.

WARNER KENNON Statesboro, Ga.

EDNA HALL KENT Millen, Ga.

DELVA KICKLIGHTER Glennville, Ga.

ALICE JO LANE Statesboro, Ga.

Sigma Gamma

JOSEPH E. LEVER Metter, Ga.

Delta Sigma

JOYCE LICHTENSTEIN Tennille, Ga.

WILLIAM J. MARTIN Edison, Ga.

SARA VERA MASON Mt. Vernon, Ga.

EDNA MARGUERITE MATTHEWS . . Statesboro, Ga.
Epicurean

MARY MCCARTY Attapulgus, Ga.

NELLORENI MCCOLLUM Broxton, Ga.

FLEMING MCDANIEL Waycross, Ga.

GRACE MCELVEEN Brooklet, Ga.

JAMES DELMAR MCGOWAN . . . Graymont, Ga.

JOSEPH EDWARD MILLER Iron City, Ga.

BARBARA CLARE MINCEY Ogeechee, Ga.

HAZEL LILL NIXON Patterson, Ga.

BYRON MIZELL Climax, Ga.

JACK MORGAN Abbeville, Ga.



First row: Morgan, Morrison, Moye, Neely, Nelson, Nessmith, Neville. . . . Second row: Olmstead, Parker, N.; Parker, W.; Parker, W. N.; Patat, Paulk, Peagler. . . . Third row: Poole, Powell, C.; Powell, L.; Powell, M.; Robertson, V.; Robertson, M.; Robinson.

● T H E S O P H O

KATHRYN MORGAN Guyton, Ga.
 J. HAYGOOD MORRISON Thomson, Ga.
 Delta Sigma
 ROBERT J. MOYE Adrian, Ga.
 Iota Pi Nu
 ROY ELMIR NEELY Manchester, Ga.
 MERRILL NELSON Reidsville, Ga.
 SUSIE BELLE NESSMITH Oliver, Ga.
 EDNA D. NEVILLE Statesboro, Ga.
 Sigma Gamma
 JOHN OLMSTEAD Hinesville, Ga.
 NANCY BELLE PARKER Fitzgerald, Ga.
 WILMER PARKER Ludowici, Ga.
 WILLIAM NEWTON PARKER LaGrange, Ga.

THOMAS PATAT Cuthbert, Ga.
 Bugger-Dagger
 MARY ANNE PAULK Fitzgerald, Ga.
 JEAN PEAGLER Manor, Ga.
 Sigma Gamma
 FLORINE POOLE Matthews, Ga.
 CLEONELLI POWELL Kite, Ga.
 Sigma Gamma; "X"
 LINNIE VIRGINIA POWELL Wrightsville, Ga.
 MARY POWELL Swainsboro, Ga.
 Dux Domina
 MARY FRANCES ROBINSON Vidette, Ga.
 THOMAS ROBINSON Sardis, Ga.
 JOSEPH L. ROBERTSON Americus, Ga.
 Delta Sigma



First row: Rooks, Shepard, Sherman, Shivers, Smith, B.; Smith, L.; Sneed. . . . Second row: Sperry, Stanford, Strozso, Strickland, Sullivan, Sumner, Taylor. . . . Third row: Thigpen, Thomas, Thompson, Tillman, B.; Tillman, H.; Tippens, Trussell.

A O R E C L A S S

REGINALD ROOKS Arlington, Ga.
 SYBIL T. SHEPARD Dexter, Ga.
 WISLEY SHERMAN Savannah, Ga.
 SUE ELIZABETH SHIVERS Vidette, Ga.
 "X"
 BETTY SMITH Statesboro, Ga.
 Epicurean
 LOUELLA SMITH Lake Park, Ga.
 FRUSANNE SNEED Statesboro, Ga.
 NORMAN V. SPERRY Reidsville, Ga.
 JOE PAT STANFORD Cuthbert, Ga.
 Bugger-Dagger
 GENEVIEVE STROZZO Brooklet, Ga.

NANCY R. STRICKLAND Waycross, Ga.
 CLAUDE H. SULLIVAN Perkins, Ga.
 ROY MARION SUMNER Ashburn, Ga.
 ANNIE MAE TAYLOR Miller, Ga.
 Delta Lambda Delta
 LOUISE THIGPEN Adrian, Ga.
 OLIVER BENJAMIN THOMAS Georgetown, Ky.
 DAPHNE THOMPSON Adrian, Ga.
 BEN TILLMAN Glennville, Ga.
 JAMES HAROLD TILLMAN Glennville, Ga.
 MYRA TIPPENS Claxton, Ga.
 ISABEL TRUSSELL Talbotton, Ga.
 Lambda Theta Chi



First row: Turner, Upchurch, Wallace, Waller, Ward, Warren, Waters. . . . Second row: Watson, Whitley, Williams, Willis, Wilson, Wingate, Young, Zetterower.

THE SOPHOMORE CLASS

JOHN RENDR TURNER Gay, Ga.

Delta Sigma

SARA HELLN UPCHURCH Stilson, Ga.

WILMER W. WALLACE Louisville, Ga.

CEAY WAELLER Tennille, Ga.

HILDA JUAN WARD Blackshear, Ga.
"X"

ROY P. WARREN Stillmore, Ga.

NELL WATERS Hilltonia, Ga.

KATHERINE WATSON Metter, Ga.

HAL C. WHITEEY Osiefeld, Ga.
Bugger-Dagger

LIE WIEEIAMs Register, Ga.

A. ELIZABETH WILLIS Middleton, Ga.

RUFUS C. WILSON Statesboro, Ga.

BIEL R. WINGATE Pelham, Ga.

MADOEYN YOUNG Tennille, Ga.

J. R. ZETTROWER Dublin, Ga.
Delta Sigma

FRESHMAN CLASS



Standing: Rumph, Ward, Olmstead. . . . Seated: Bidgood, Salley, Watson.

OF COURSE, as in all families, the youngest children are the ones who receive the most attention. They are the ones who need the most care since they are not entirely capable of taking care of themselves. They receive all this attention and care not only because they need it, but because they deserve it as well. They are the children who "say and do the cutest things." Theirs is a happy, care-free life. The other members of the family do most of the work. They play and enjoy life, sometimes to the exclusion of their studies which almost gives some of their parents a headache.

At times their older brothers and sisters and even parents may not treat them with what they deem to be the proper respect; at times their life does seem hard—they are unable to cope with the problems that arise—but usually their life is the happy-go-lucky, not-too-studious, one of young children—and of college freshmen.

OFFICERS

BOB BIDGOOD	<i>President</i>
SAM RUMPH	<i>Vice-President</i>
DAVID WATSON	<i>Secretary</i>
NANCY SALLEY	<i>Treasurer</i>
MR. J. C. WARD	<i>Sponsor</i>

FRESHMAN CLASS

FRANK AGUIRRI Cienfuegos, Cuba

CARLTON AHH Alma, Ga.

BONILLI AIKINS Statesboro, Ga.

ALIH JIAN ALDERMAN Portal, Ga.

CHARLES ALLORD Ft. Valley, Ga.
Bugger-Dagger

DOROTHY ANDERSON Summit, Ga.
Lambda Theta Chi

RALPH BACON Pembroke, Ga.

GERALDINE BLASLY Claxton, Ga.

LOUISE BEATTY Willie, Ga.

MARTHA SUI BENNETT Statesboro, Ga.

ELIZABETH BEVILLI Oliver, Ga.

ROBERT BIDGOOD Dublin, Ga.
Delta Sigma

MAURICE BOATRIGHT Swainsboro, Ga.

STANLEY BOOTH Madison, Ga.

MYRTICE BRANNIN Statesboro, Ga.

BOBBIE BRINSON Brooklet, Ga.

EDITH BRINSON Brooklet, Ga.

J. W. BRINSON Wrightsville, Ga.

JIAN BROWDER Odum, Ga.

MARGARET BROWN Statesboro, Ga.
Dax Domina

DOYLE BURCH Rentz, Ga.

MARY EVA BURCH Alma, Ga.

WILLIAM BURPITT Ellabelle, Ga.

LOUISE CANNON Walnut Grove, Ga.

MARTHA CARTER Scott, Ga.
"X"

CLINTON CASON Anderson, S. C.

DANIEL CHAMBLISS Dawson, Ga.

EMMA CHAVOUS Dublin, Ga.

ROBERT CHISOLM Varnville, S. C.

HILDA CLARK Statesboro, Ga.

LOUISE CLIFTON Statesboro, Ga.

H. JACKSON COBB Eastman, Ga.





FRESHMAN CLASS

CHRISTINE COLEMAN Claxton, Ga.

MARGARIT COLLINS Swainsboro, Ga.

HELEN CONNOR Sylvester, Ga.
Sigma Gamma

JACKIE COWAN Richland, Ga.
Sigma Gamma

JAMES COWART Statesboro, Ga.

IDA CRITCH Claxton, Ga.

EMILY CROMLEY Brooklet, Ga.
Lambda Theta Chi

MARIAN CROUCH Quincy, Fla.

RACHAEL CROUCH Dawson, Ga.
Sigma Gamma

ERNEST CULBRETH Edison, Ga.
Iota Pi Nu

ANNE CULLINS Waycross, Ga.
Sigma Gamma

LION CULPIPPER Cordele, Ga.
Iota Pi Nu

BETTIE LOU CUMMINGS Guyton, Ga.

THOMAS CURRY Dublin, Ga.
Delta Sigma

ANNE DARBY Vidalia, Ga.

INMAN DAVIS Blun, Ga.

MARY ANN DAVIS Waycross, Ga.

THOMAS DAVIS Brunswick, Ga.

DOROTHY DIKLE Register, Ga.

JERAED DIKLE Register, Ga.

DUDLEY DELOACH Claxton, Ga.

GRACE DOTSON Savannah, Ga.

MARILYN DURRENCI Glennville, Ga.

HUGH EDENFIELD Statesboro, Ga.

CHARLES ELLIOTT Greenwood, Del.

BION ENLOW Atlanta, Ga.

JEWELL EVANS Oliver, Ga.

JOE FARMER Augusta, Ga.

MARY ISABEL FARMER Fitzgerald, Ga.
Sigma Gamma

EVA NELLE FLANDERS Rockledge, Ga.

FRANCES FLOYD Statesboro, Ga.

WILMA FLOYD Ludowici, Ga.

IN MEMORIAM

MARIAN CROUCH

FRESHMAN CLASS

JUANITA FORDHAM Statesboro, Ga.
CAROLYN FOSTER Edison, Ga.

Delta Lambda Delta

MAXANNI FOY Statesboro, Ga.
Dux Domina

EMMIE FREEMAN Sylvania, Ga.
Sigma Gamma

MARY FRIIS Millen, Ga.
Delta Lambda Delta

ETSA GOMEZ Cienfuegos, Cuba
LIT GOOLSBY Eastman, Ga.
Lambda Theta Chi

LEWIS HINSON GRINER Claxton, Ga.
EDWIN GROOVER Statesboro, Ga.
Delta Sigma

GEORGE T. GROOVER Statesboro, Ga.
Delta Sigma

KARIS E. GUNBY Statesboro, Ga.
SARAH AGNES HAGAN Statesboro, Ga.
HELEN M. HARDWICK Covington, Ga.
Delta Lambda Delta

MARGARET ANN HARDWICK Covington, Ga.
Delta Lambda Delta

WINIFRED G. HARRELL White Oak, Ga.
EMILY ALICE HARRIS Pelham, Ga.
Sigma Gamma

EDNA FAY HASTY Georgetown, Ga.
JACK HATCHER Harlem, Ga.
ANNELL HENDRIX Lake Park, Ga.

MARY KATHLEEN HENDRICK Statesboro, Ga.
WILLIE HUGH HINLEY Springfield, Ga.

CALVIN HOLLIDAY Langley Field, Va.
CHARLES F. HORNE Doerun, Ga.

SARA K. HOWELL Statesboro, Ga.
Sigma Gamma

JOHN ROBERT HUGGINS Oliver, Ga.
CARL J. HUTCHINS Sparta, Ga.
Bugger-Dagger

BILLY HUGH INGRAM Nelson, Ga.
KATHRYN EUNICE IRWIN Louisville, Ga.
EDNA ELIZABETH JACKSON Stapleton, Ga.
ROSELYN JOHNSON Jefferson, Ga.
JAMIS ALLIN JONES Statesboro, Ga.
JOYCE JONES Louisville, Ga.
Dux Domina





FRESHMAN CLASS

MARY ELIZABETH JORY Brunswick, Ga.

EMILY KATHRYN JOYNER Screven, Ga.

Delta Lambda Delta

WILLIAM L. KEY Statesboro, Ga.

LUCILE KIRKLAND Metter, Ga.

BETTY IRENI KNOWLES Ashburn, Ga.

MARY GRACE LAKE Dublin, Ga.

EMMIE LANG St. Marys, Ga.

JAMIS D. LANGLEY Cedartown, Ga.

DENVER LANIER Rocky Ford, Ga.

CHARLES E. LAYTON Statesboro, Ga.

Iota Pi Nu

MARY AGNES LEE Oliver, Ga.

JOHN LEWIS Vidalia, Ga.

GRACE LORD Tennesse, Ga.

LAVADA MARTIN Nevil, Ga.

ROBBIE LEE MALLARD Cobbtown, Ga.

VIRGINIA LEE MARTIN Patterson, Ga.

WILLIAM AUBREY MAY Mitchell, Ga.

HERBERT S. McCUTCHEON Greenwood, Del.

NELLIE ELIZABETH McDANIEL Albany, Ga.

OMILU McELVEEN Brooklet, Ga.

ROGER FRANCIS McMILLAN Fitzgerald, Ga.

Sigma Gamma

LOIS MAE MEELS Nichols, Ga.

LOTTIE MILLER Statesboro, Ga.

RALPH MIZEL Cave Springs, Ga.

SARA MOBILEY Millen, Ga.

MAGGIE RACHAEL MOORE Swainsboro, Ga.

MIRIAM ELIZABETH MORGAN Dearing, Ga.

"X"

CAROLYN MORRIS Swainsboro, Ga.

Lambda Theta Chi

VIRGINIA D. MORRIS Tampa, Fla.

Lambda Theta Chi

MARGARET MOSFLEY Soperton, Ga.

JOSH T. NESSMITH, JR. Statesboro, Ga.

ETHELYN NEWTON Garfield, Ga.

FRESHMAN CLASS

CLINTON OLIVER Glennville, Ga.
DIGHT OLLIFF Statesboro, Ga.
Delta Sigma

RUTH MYRTLE OLLIFF Statesboro, Ga.
CECIL J. OLMSTAD Hinesville, Ga.
Iota Pi Nu

JOHN ROBERT OVLERMAN Hinesville, Ga.
DORIS PARRISH Brooklet, Ga.
JACK PARRISH Pembroke, Ga.
MYRTLE EDWENA PARRISH Portal, Ga.
"X"

THOMAS HILL PASCHAL Albany, Ga.
MILDRED MARIE PEARSON Savannah, Ga.
Lambda Theta Chi
MARY THOMAS PERRY Dover, Ga.
Dux Domina

HELEN RUTH PHIPPS Albany, Ga.
GEORGE B. PRESTON Statesboro, Ga.
FRANCIS RACKLIY Waynesboro, Ga.
MYRTLE E. RAWLINGS McRae, Ga.
SARA LOU REDMOND Milford, Ga.
JOHN W. REISER Clio, Ga.
Iota Pi Nu; Bugger-Dagger

MARJORIE ROBERTS Gainesville, Fla.
"X"
HARRY L. ROBERTSON Waycross, Ga.
Delta Sigma

BLULAH EDNA ROGERS Reidsville, Ga.
Dux Domina
SUE NELL ROGERS Manassas, Ga.
ROSS LEE ROUNTRIE Summit, Ga.
Iota Pi Nu

THEIRA DELL ROUNTRIE Canoochee, Ga.
Delta Lambda Delta
SAMUEL C. RUMPH, JR. Marshallville, Ga.
Iota Pi Nu

NANCY JIM SALLY Cedartown, Ga.
Dux Domina
KENNETH J. SCOTT Sylvania, Ga.
Bugger-Dagger

MARTHA WILMA SIMMONS Statesboro, Ga.
Epicurean

CHARLES SMITH Chula, Ga.
FRED H. SMITH Statesboro, Ga.
ROY LEE SMITH Swainsboro, Ga.
SARA MAE SMITH Coronado Beach, Fla.
SID R. SMITH Statesboro, Ga.





FRESHMAN CLASS

ANNIE TOM SOWELL Hilltonia, Ga.

FRANCIS SPIRRY Reidsville, Ga.

Delta Lambda Delta

JUAN ELIZABETH STAFFORD Ludowici, Ga.

MARY HELEN STANFIELD Reidsville, Ga.

JAMES C. SULLIVANS Sycamore, Ga.

ANNETTE STRICKLAND Millen, Ga.

DOROTHY STRICKLAND New Smyrna, Fla.

MARTHA E. STRICKLAND Iron City, Ga.

ORTIZ STRICKLAND Vidalia, Ga.

SARA ANNE SUDDATH Statesboro, Ga.

MYRTIS NELL SWINSON Statesboro, Ga.

DONNA SUI THIGPEN Dublin, Ga.

Sigma Gamma

ARCHIE LEE THOMAS Offerman, Ga.

MARY KATHRYN THOMAS Waycross, Ga.

Sigma Gamma

MARY ELIZABETH TOOTLE Glennville, Ga.

FLOYD TURK Ocilla, Ga.

BILLIE TURNER Millen, Ga.

Epiclean

OLAN USHER Brooklet, Ga.

HESTER LEE WARD Bainbridge, Ga.

MARTHA C. WARE Fitzgerald, Ga.

HAROLD L. WATERS Statesboro, Ga.

WILLIAM R. WATERS Savannah, Ga.

Delta Sigma

DAVID E. WATSON Fitzgerald, Ga.

MARJORIE F. WHEATLEY Collegeboro, Ga.

Sigma Gamma

WILLIAM LEE WILKINSON Bainbridge, Ga.

DOLLIE LOUISE WILLIAMS Adrian, Ga.

DOROTHY L. WILSON Statesboro, Ga.

VIRGINIA WILSON Savannah, Ga.

HILIN WINDHAM Jeffersonville, Ga.

JAMES C. WINGATE Pelham, Ga.

QUIDA ELIZABETH WYATT Brooklet, Ga.

Epiclean

BETTY WYNN Bainbridge, Ga.

DNA Domina

ORA LYNETTE YANDLE Lyons, Ga.

Lambda Theta Chi

JOHN R. YARBROUGH Sparta, Ga.



Seeing if our PARENTS love us.



The THIRTEEN CHILDREN



"On such a night as this . . ."

EXTRA-CURRICULAR activities are an outstanding and colorful phase of life in our home. Participation in various organizations gives the children an opportunity to develop well-rounded lives and personalities, and to express themselves in many fields. Play night . . . group meetings . . . sports . . . dances . . . picnics . . . fraternities . . . sororities . . . public initiations . . . dramatics . . . music . . . all of these supplement classes, studies, and exams in contributing to the development of our lives at the Home of Georgia Teachers.

INGS THE REN DO

Marching along,
together.



THE *Student* COUNCIL

OFFICERS

BOBBY CARROLL
President

CARLTON CARRUTH
Vice-President

MIRIAM GIRARDEAU
Secretary

BILL CHAMBLESS
Treasurer



Carlton Carruth, Miriam Girardeau, Bobby Carroll, Bill Chambliss.

THE PURPOSE of the Student Council is to represent the whole student body in matters affecting student interest; to afford a suitable and convenient medium of communication between the students and the school authorities; to direct the social activities of the students; and, in general, to create and preserve the customs and traditions of the school.

The council is composed of fourteen members; a president, vice-president, and secretary, elected by the student body as a whole; three representatives from the senior class, two from the junior class, one from the sophomore class, and one from the freshman class; and the four class presidents. The council, except the freshman representative, is elected at the close of each school year and serves during the following year. The council elects a treasurer from its own membership at the first meeting in September.

MEMBERS

BILLY TALBERT	<i>President Senior Class</i>
LORRAINE BROCKETT	<i>Senior Representative</i>
EDWARD CARRUTH	<i>Senior Representative</i>
D. R. BARBER	<i>President Junior Class</i>
BURDELL HARRISON	<i>Junior Representative</i>
HERMAN WRINKLE	<i>Junior Representative</i>
JOE INGRAM	<i>President Sophomore Class</i>
DAVID BOWMAN	<i>Sophomore Representative</i>
ROBERT BIDGOOD	<i>President Freshman Class</i>
CECIL OLMSTEAD	<i>Freshman Representative</i>

Standing: Talbert, C. Carruth, Olmstead, E. Carruth . . . Seated: Carroll, Harrison, Wrinkle, Barber, Chambless,
Ingram, Brockett, Bowman, Girardeau, Bidgood.



EAST HALL

House Council

OFFICERS

OLIVE REPPARD
President

MIRIAM GIRARDEAU
Vice-President

CATHERINE GAINLY
Secretary-Treasurer

MISS VEAZLY
House Mother



Front row: Rountree, Pagett, Reppard, Strickland. . . . Second row: Harrison, Deal, Morris, Denard, Girardeau. . . . Third row: Breen, Cromley, Godbee, Gainey, Sands, Kirkland.

MONITORS

FRANCES BREEN
DOROTHY CROMLEY
FRANCES DEAL
AGNES DENNARD
SARA GODBEE
FRANCES HARRISON
LUCILE KIRKLAND
CAROLYN MORRIS
PAT PAGETT
THERA DELI. ROUNTREE
DORIS SANDS
NANCY STRICKLAND



LEWIS HALL



House Council

OFFICERS

SALLIE SMITH
President

JEWELL VANDIVER
Vice-President

IRA LOIS BROWN
Secretary-Treasurer

MRS. CAZORT
House Mother

MONITORS

JANETTA CALDWELL

ELIZABETH FORD

EDWENA PARRISH

JANE POOL

FLORINE POOLE



Standing: Pool, Ford, Cazort, Caldwell, Poole. . . . Seated: Smith, Brown, Vandiver.



SANFORD HALL *House Council*

OFFICERS

JOI JOYNER *President*
 CHARLIS STANFIELD *Vice-President*
 DAVID BOWMAN *Secretary-Treasurer*
 AUNT SOPHIE *House Mother*

WHERE WE LIVE...

MONITORS

HENDRY BAGLEY
 EARL BYRD
 JIMMY DELOACH
 JOHN DUNN
 HUGH HODGES
 EDDIE NAJJAR
 JOI STANFORD
 ERNIST TROWELL
 BOBBY CARROLL
 J. R. TURNER



Standing: Trowell, Bagley, Bowman, Stanford, Dunn, Najjar. . . . Seated: DeLoach, Turner, Stanfield, Joyner, Carroll, Hodges

WEST HALL

House Council

OFFICERS

KITTY DUBBERLY
President

ELIZABETH MILLER
Vice-President

MARJORIE BREWER
Secretary-Treasurer

MISS EDENFIELD
House Mother



First row: Rogers, Dial, Cobb, McMillan, Morgan, Shivers. . . . Second row: Gooden, Eason, Harrison, Berry, Forehand. . . . Standing: Miller, Dubberly, Brewer.

MONITORS

VIRGINIA EASON
DOROTHY BERRY
CAROLYN GOODEN
SARA ELIZABETH DIAL
MARJORIE COBB
MARJORIE FOREHAND
SUE NELL ROGERS
ROGER McMILLAN
MIRIAM MORGAN
MARTHA HARRISON
SUE SHIVERS





Standing: Thomson, Morrison, King, Holloway, Cowart, Neville, Sherman, Barnard, Pulliam. . . . Kneeling: Dobbs, Waller, Sperry, Aguirre, Nelson

CIVIL AERONAUTICS FLYING SQUAD

MEMBERS

EDWARD AGUIRRE
ASA BARNARD
LEROY COWART
KRANSON HOLLOWAY
JOHN KING
HAYGOOD MORRISON

MERRILL NELSON
GUSMON NEVILLI
WESLEY SHERMAN
NORMAN SPERRY
CLAY WALLER

INSTRUCTORS

MR. THOMSON

MR. DOBBS

MR. PULLIAM



Taking off!

Watching a perfect landing





D. R. BARBER, JR.
President Young Men's
Christian Association

The Y.M.C.A.-Y.W.C.A.

DOROTHY CROMLEY
President Young Women's
Christian Association



*"But seek ye first the Kingdom of God,
and His righteousness; and all these things
shall be added unto you."*

—MATTHEW 6:33.

THE Y. M. C. A.-Y. W. C. A. are a part of the regular extra-curricular life of the college campus. Their task day by day is to seek to make the Christian way operative in college life. Membership in both groups is open to any student or faculty member who is in sympathy with the purpose.

Recognizing their task, the local Y. M. C. A.-Y. W. C. A. have many activities which are designed to contact every student in the college community. Regular meetings of the Y. W. C. A. are held every week and regular meetings of the Y. M. C. A. are held every two weeks. In addition to these regular meetings the Y. W. C. A. has Morning Watch services each morning in the girls' dormitories and the Y. M. C. A. conducts an evening worship service for the boys.

A Sunday evening Vesper service is held in the college auditorium each week under the joint auspices of the Y. M.-Y. W. C. A. These programs are built around the Vesper Choir, a group devoted to choral and spiritual singing. An effort is made to have these programs planned and executed entirely by students.

Both the Y. M. C. A. and the Y. W. C. A. are governed by cabinets which are at the same time the spiritual and executive center of the Associations. Cabinet meetings are held regularly and it is their responsibility to find the needs of the campus, to understand the resources of the Christian religion and to execute a strategic campus program.

For the men the Y. M. C. A. sponsors Deputation Teams which offer splendid opportunities for training in religious speaking and program-planning. These teams take charge of church programs in near-by towns and conduct the services.

The two groups also act as a social force on the campus. On Saturday evenings when the college gymnasium is not in use the Y. M.-Y. W. jointly sponsor "Play Night." Every student on the campus is invited to come and participate in some form of individual sports and recreational games. The Y. M. C. A. also enters athletic teams in the intramural programs sponsored by the college.



Standing: Mr. Thompson, Feaster. . . . Seated: Whitley, Booker, Jenkins, Chambless, Barber, Roberts, Bowman, Wrinkle, Hodges.

Y. M. C. A.

PURPOSE

To lead students to faith in God through Jesus Christ;

To lead them into membership and service in the Christian Church;

To promote their growth in Christian faith and character, especially through the study of the Bible and prayer;

To influence them to devote themselves in united effort with all Christians to make the will of Christ effective in human society, and to extend the Kingdom of God throughout the world.

OFFICERS

D. R. BARBER	<i>President</i>
BILL CHAMBLESS	<i>Vice-President</i>
JOHN ROBERTS	<i>Secretary</i>
BOBBY CARROLL	<i>Treasurer</i>
MR. PAUL THOMPSON	<i>Faculty Advisor</i>

CABINET

TED BOOKER	<i>Vespers</i>	HERMAN WRINKLE	<i>Membership</i>
CHESLEY WHITLEY	<i>Morning Watch</i>	DAVID BOWMAN	<i>Social</i>
HUGH HODG'S	<i>Morning Watch</i>	JOE FLASTER	<i>Athletic</i>
LEON CULPEPPER	<i>Pianist</i>	TOM JENKINS	<i>Chorister</i>
WILMER WALLACE	<i>Publicity</i>		

The Y. W. C. A.

THE Y. W. C. A. is a member of the National Y. W. C. A. and a participant in the World's Student Christian Federation. The purpose is as follows:

We unite in the desire to realize full and creative life through a growing knowledge of God.

We determine to have a part in making this life possible for all people.

In this task, we seek to understand Jesus and follow Him.



Singing at Y. W. meeting



Standing: Harrison, Brewer, Dubberly, Brown. . . . Seated: Gainey, Bowen, Vandiver, Hughes, Cromley, Gunter, Hartley, Rainey.

OFFICERS AND CABINET

DOROTHY CROMLEY	President
FRANCES HUGHES	Vice-President
MIRIAM GIRARDEAU	Secretary
JEWELL VANDIVER	Treasurer
BURDITTE HARRISON	Worship
KITTY DUBBERLY	Vespers
SARA REID BOWEN, IRA LOIS BROWN, MARJORIE BREWER	Morning Watch
EMOLYN RAINEY	Publicity
MEG GUNTER	Recreation
CATHERINE GAINNEY	Music
AZILL HARTLEY	Membership
MRS. HENDERSON	Sponsor



EDWARD and CARLTON CARRUTH

BUSINESS STAFF

CARLTON CARRUTH
EDWARD CARRUTH
Business Managers

ANN BREEN
B. L. DOUGLAS
Advertising Managers

CATHERINE GAINEY
Circulation Manager



Gainey, Douglas, C. Carruth, E. Carruth, Breen.

OUR WISH is that the 1940 REFLECTOR will enable you to remember your friends, these brothers and sisters, guides, guardians and mentors, to recall all they have meant to you and to hold the happiness and joy that this year with its many associations and contacts has brought you, close to your heart forever.

O R for 1940

EDITORIAL STAFF

JEWELL VANDIVER Editor

JANE POOL Associate Editor

MIRIAM GIRARDEAU Literary Editor

LEROY COWART Club Editor

LORRAINE BROCKETT Club Editor

GUSMON NEVILLE Art Editor

HOMER BLITCH Sports Editor

WESLEY SHERMAN Photographic Editor



JEWELL VANDIVER



JANE POOL



Left to right: Brockett, Neville, Girardeau, Vandiver, Sherman, Blitch, Cowart.

The GEORGE-ANNE

Established 1927

Member Georgia Collegiate Press Association

Published bi-weekly by the students of Georgia Teachers College, Collegeboro, Ga.

Published bi-weekly from September till June except during holidays.

Subscription rate: 10c per copy; \$1.00 per year

Entered as second-class matter at the postoffice at Collegeboro, Ga., under temporary permit.

NICHOLAS DUNBAR Editor
JOHN BEN AYERS Business Manager

EDITORIAL STAFF

ELBERT SANDERS Associate Editor
FESSIE LANGFORD Assistant Business Manager
ROSE LOCKHART Society Editor
BILL CHAMBLESS Circulation Manager
HENDRY BAGLEY Sports Editor
BOBBY CARROLL Assistant Sports Editor



Left to right: B. Chambliss, Lockhart, Bagley, Carroll, Sanders, Ayers.



Left to right: Girardeau, D. Chambliss, Dunbar, Barber, Fisher, Brockett, Pagett.



NICHOLAS DUNBAR, Editor

REPORTERS

DOROTHY FISHER	MATTIE LEE PAGETT
FRANCES DEAL	ED ALLEN
MIRIAM GIRARDEAU	D. R. BARBER
LORRAINE BROCKETT	DAN CHAMBLESS
LOY SCOTT	TOM COX
HARRY ROBERTSON	

THE I.R.C.

THE INTERNATIONAL RELATIONS CLUB has as its main objective the promotion of intelligent interest in world affairs. The meetings are in the form of open forum discussions on questions of international concern. The Club is affiliated with the Carnegie Endowment for International Peace, and this year sent a delegation to the Southeastern Conference at Chapel Hill. Membership is open to all students who manifest an interest in international affairs.



Girardeau, E. Carruth, Dr. Destler, Sherman.

OFFICERS

EDWARD CARRUTH	President
WESLEY SHIRMAN	Vice-President
MIRIAM GIRARDEAU	Secretary-Treasurer
DR. C. M. DESTLER	Advisor

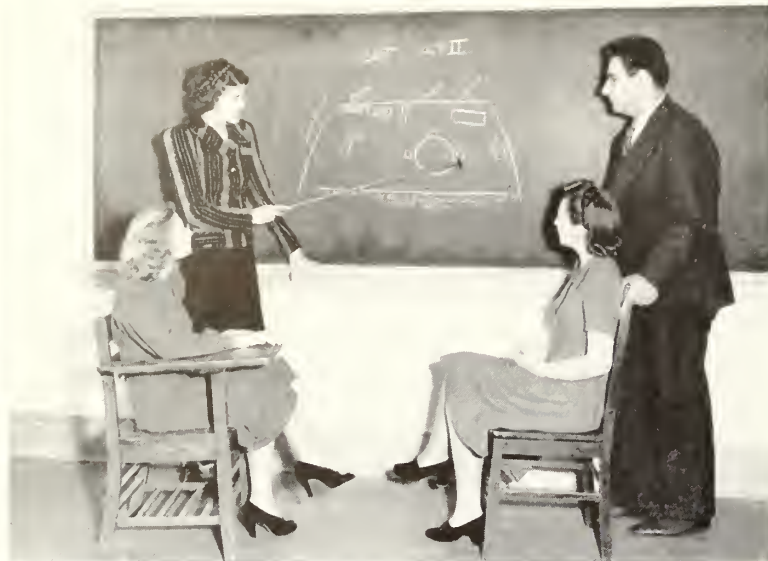


MEMBERS

CHARLES ALLFORD	EMILY GOIT
LORRAINE BROCKETT	RUTH KAMMERER
EART BYRD	PILCHER KIMP
CARLTON CARRUTH	MATILDA LANG
EDWARD CARRUTH	ROSE LOCKHART
EDITH DAVIS	MILDRED PITTMAN
AGNES DENNARD	COLBERT PURVIS
MILTON FINDLY	ELBERT SANDERS
SARA FORTLIAND	WISLEY SHERMAN
MIRIAM GIRARDEAU	DORIS TONEY

OFFICERS

EDDIE NAJJAR *President*
 ROSE LOCKHART *Secretary*
 EMOLYN RAINY *Treasurer*
 MISS MAMIE JO JONES *Director*



Lockhart, Miss Jones, Rainey, Najjar.

MEMBERS

TED BOOKER	MATILDA LANG
JENNIE BRANNEN	ESSIE LANGFORD
LORRAINE BROCKITT	MYRTLE LARISCY
MARTHA CARTER	ROSE LOCKHART
BILVA DICKSON	ONILU McELVEEN
WYNETTE DURRENCE	ROGER McMILLAN
GRACE EVERETT	CAROLYN MORRIS
MARY ISABEL FARMER	MARGARET MOSELY
CAROLYN FOSTER	EDDIE NAJJAR
MAXANNE FOY	MARIE PEARSON
SARA GODBET	MARY THOMAS PERRY
LILL GOOLSBY	LINNIE POWELL
MARY GRAHAM	EMOLYN RAINY
BERNICE GRIFFIN	JODY ROBERTSON
ELMER GROOVER	THIRA DELL ROUNTRIE
MEG GUNTER	WESLEY SHERMAN
HILLEN HARDWICK	MARTHA STRICKLAND
ALICE HARRIS	SYBIL STRICKLAND
FRANCES HARRISON	ANNIE MAE TAYLOR
ELIZABETH HORN	DAVID WATSON
MARGARET JOHNSTON	HILDA WARD
EULA BETH JONES	VIRGINIA WILSON
JOYCE JONES	LOUISE WILLIAMS



Masquers PRODUCTIONS



THREE CORNERED MOON

by GERTRUDI TONKONOGY

CAST

JEEKS TAYLOR	SYBIE STRICKLAND
B. L. DOUGLAS	BILE BRIGHAM
MARIE PEARSON	HOMER BLITCH
HILDA WARD	ROSE LOCKHART
JIM MOORE	

DEATH TAKES A HOLIDAY

by ALBERTO CASILLO

CAST

FRANK JORDAN	EULA BETH JONES
SARA GODBEE	ROSS ROUNTRIE
WILLIE WATERS	JODY ROBERTSON
MARY ISABEL FARMER	LEE GOOLSBY
BEIVA DICKSON	



THE MASQUERS



Mary Isabel Farmer, Ted Booker, Belva Dickson, Homer Blitch, Jody Robertson, Lee Goolsby.



Left to right: Godbee, Goolsby, Jones, Blich, Waters, Dickson, Trussell, Booker, Farmer, Robertson.



Eula Beth Jones as Grazia, Frank Jordan as Prince Sirki, in "Death Takes a Holiday."

MU SIGMA

National Music Fraternity

Alpha Chapter Founded at Culver-Stockton College, Canton, Mo., 1931.
Delta Chapter Founded at Georgia Teachers College, 1939.

SONG: "Hail to Thee Mu Sigma"

COLORS: Blue and Gold

MOTTO: Music Exalts Life

OFFICERS

TED BOOKER	President
ELLIOT BOSWELL	Vice-President
FRANCES HUGHES	Secretary
FRANCES HARRISON	Treasurer
MRS. W. CARPENTER	Program Chairman
MR. E. G. HARRIS, MRS. G. A. BARNES, MR. RONALD NEIL	Faculty Advisors

MEMBERS

TED BOOKER
ELLIOT BOSWELL
WINONA CARPENTER
LEON CULPEPPER
MAXANNE FOY
MARY FRIES
FRANCIS HARRISON
FRANCES HUGHES
MARGARET JOHNSTON
EULA BETH JONES
JAMES JONES

PILCHER KEMP
BETTY McLEMORE
MARY PAULK
BETTY SMITH
DONNA THIGPEN
BILLIE TURNER
GLADYS THAYER
DORIS TONEY
ISABEL TRUSSELL
BILL WINGATE
OUIDA WYATT

Standing: Neil, Kemp, Johnston, Turner, Fries, Thigpen, Jones, Booker, Boswell, Culpepper, Wingate, Harris. . . .
Seated: Harrison, Hughes, Foy, Gainey, McLeMore, Wyatt, Toney, Trussell, Jones, Carpenter, Smith.



GLEE CLUB

RONALD J. NEIL, *Director*

GUEST ARTISTS

MINNA HICKER	<i>Soprano</i>
MARIE WOOD	<i>Contralto</i>
STUART WEST	<i>Bass</i>
DWIGHT BRUCE	<i>Organist</i>

PRESENTATION OF HANDEL'S MESSIAH, DECEMBER 12.



Back row: Sheldon Chapman, Roy Sumner, Billie Martin, Frank Jordan, Frank Aguirre, Frances Groover, Bob Bidgood, John Overman, Wayne Culbreth, Leon Culpepper, Carlton Carruth, Joe Stanford, Ted Booker, Tom Jenkins, Harold Waters; Lambeth Key, D. P. Lanier, Pilcher Kemp, John Roberts, Ivan Hostetler. . . . Second row: Edward Carruth, Elliot Boswell, Joy Bowden, Rachael Crouch, Elvina Parrish, Miriam Morgan, Mary Paulk, Donna Thigpen, Martha Bennet, Marjorie Wheatley, Martha Ware, Sybil Shephard, Virginia Eason, Marian Crouch, Lottie Miller, Katherine Morgan, Francis Trapneff. . . . Third row: Mrs. Neil, Elizabeth Ford, Burdell Harrison, Mary Busch, Emmie Freeman, Jordye Tanner, Beulah Rogers, Helen Stanfield, Geraldine Keefe, Mary Fries, Alice Joe Lane, Lynette Yandle. . . . Fourth row: Mr. Neil, Doris Toney, Emmie Lang, Kathleen Groover, Margaret Johnston, Bettie McLeMore, Emily Cromley, Ouida Wyatt, Frances Hughes, Jackie Cowart, Sara Howell. . . . Seated: Miss Marie Wood, Mr. Stuart West, Miss Minna Hecker. . . . Organ: Mrs. Barnes, Mr. Dwight Bruce. . . . Piano: Catherine Gainey. . . . Members not in picture: Dorothy Anderson, Dorothy Fisher, Curtis Lane, Julia Meadows, Cleo McLeod, Edna Neville, Mildred Pittman, George Preston.

Leaving for Savannah





H for Havana

THE *Band*

MR. ERNEST E. HARRIS, *Director*

OFFICERS

HUGH MAXWELL *President*
 CARROL BEASLEY *Vice-President*
 DAVID BOWMAN *Secretary*
 CARLTON CARRUTH *Treasurer*
 ROBERT MOYE *Drum Major*
 MARGARET BROWN *Majorette*
 CATHERINE JOYNER *Majorette*

MEMBERS

Trumpets:

HUGH MAXWELL
 CARROL BEASLEY
 NILLIE MCDANILL
 CARLTON CARRUTH
 BOBBY BRINSON
 JOSHUA NESSMITH
 THOMAS CURRY
 ESTHER LEE BARNES

Trombones:

GISMON NEVILLE
 ROGER HOLLAND

CHISLEY WHITLEY
 HARRY ROBERTSON
 FRANCIS GROOVER
 PAT PAGITT

Bass:

LION CULPEPPER
 HAROLD SMITH

Clarinets:

EDWARD CARRUTH
 DAVID BOWMAN
 FLOYD HUMPHRIES
 CHISS FAIRCLOTH

JOE STANFORD
 M. L. BRANNIN
 JIMMY JONES
 FAY ALDERMAN
 BILLY TURNER

Oboe:

RUTH CONL

Flute:

HAYGOOD MORRISON

Horn:

EDWARD PRETORIUS

Percussion:

HAROLD WATERS
 DAN CHAMBLESS
 WESLEY SHIRMAN
 CALVIN HARRISON
 BILL CHAMBLESS

Saxophone:

LAMBETH KLY
 FRANK JORDAN
 CORA PAGL

Marimba:

MARTHA DANIELS

Baritone Horn:

TED BOOKER





Front row: Toney, Hughes, E. Davis, M. Crouch, Goode, Mrs. Henderson, M. Davis, Dubberly, Harrison, Gunter, Paulk. . . . Back row: Tanner, Altman, Booker, Boswell, Culpepper, Bidgood, Sumner, Alderman, McMillan, Anderson.

The VESPER CHOIR

OFFICERS

ELLIOT BOSWELL	<i>President</i>
FRANCES HUGHES	<i>Vice-President</i>
BURDELLE HARRISON	<i>Secretary</i>
BOB BIDGOOD	<i>Treasurer</i>
MRS. Z. S. HENDERSON	<i>Pianist and Director</i>

MEMBERS

FRANK AGUIRRI	JEAN BROWDER	KITTY DUBBERLY	VIRGINIA MORRIS
FAY ALDERMAN	ELIZABETH CATO	EMMIE FREEMAN	EDWINA PARRISH
ONA DILL ALTMAN	LLOD CULPEPPER	DOROTHY GOODE	MARY ANN PAULK
DOROTHY ANDERSON	SHILDON CHAPMAN	MARY EDNA GUNTER	JOHN ROBERTS
D. R. BARBER, JR.	ALLENI CONN	BURDELLE HARRISON	ROY SUMMERS
MARGARET BENNITT	EMILY CROMLEY	FRANCES HUGHES	JORDYI TANNER
BOB BIDGOOD	MARIAN CROUCH	EULA BETH JONES	DORIS TONY
TED BOOKER	EDITH DAVIS	JOYCE LICHTENSTEIN	JEWELL VANDIVER
ELLIOT BOSWELL	INMAN DAVIS	OMILU MCELVEEN	HILDA WARD
MARJORIE BRIWER	MARY ANN DAVIS	ROGER MCMILLAN	LYNETTE YANDLI

English CLUB



Left to right: Pool, Najjar, Smith, Gunter.



OFFICERS

SALLIE SMITH	President
EDDIE NAJJAR	Vice-President
JANI POOL	Secretary
MFG GUNTER	Treasurer
MRS. GUARDIA	Sponsor
GENEVIEVE GUARDIA	Mascot

MEMBERS

DOROTHY BERRY
ELLIOT BOSWELL
MARJORIE BREWER
LORRAINE BROCKETT
IRA LOIS BROWN
EARL BYRD
WINONA CARPENTER
ARLOND COOPER

JOUETT DAVENPORT
FRANCIS DEAL
AGNES DENARD
ADOLPH DRURY
NICHOLAS DUNBAR
ELIZABETH FORD
J. A. GARDNER, JR.

KITTY GARDNER
MIRIAM GIRARDEAU
MFG GUNTER
LAURA HODGES
HORACE McDUGALD
CLEO MCLEOD
ELIZABETH McNALLY

EDDIE NAJJAR
PAT PAGETT
JANI POOL
ANNE POWELL
JODY ROBERTSON
SALLIE SMITH
SYBIL STRICKLAND
HERMAN WRINKLE

Top row: Berry, Boswell, Brewer, Brockett, Brown, Byrd, Carpenter. . . . Second row: Cooper, Davenport, Deal, Drury, Dunbar, Ford, Gardner. . . . Third row: Gardner, Girardeau, Gunter, Hodges, McDougald, McLeod, McNally, . . . Fourth row: Najjar, Padgett, Pool, Powell, Smith, Strickland, Wrinkle.





SCIENCE SEMINAR



OFFICERS

HUGH HODGES *Chairman*
 KATHRYN DUBBERLY *Secretary*

"SCIENCE MOVES THE WORLD"

FACULTY ADVISORS

MR. WILLIAM S. HANNER	MISS VIOLA PERRY	MR. W. B. MOYE
MISS MALVINA TRUSSELL	MR. PAUL THOMPSON	MR. R. D. PULLIAM

MEMBERS

THIRON ANGLIN	KATHRYN DUBBERLY	MARIE PEARSON
EMMA JANE AUTRY	MARJORIE FLYNT	COLBERT PURVIS
JENNIE BRANNEN	ANN FULCHER	HARRY ROBERTSON
ROBERT BROWN	DENVER LANIER	NANCY SALLEY
ISAAC BUNCE	JOE LEVER	HILBERT SLAYDEN
JIMMIE BUNCE	SARA MASON	BILLY TALBERT
BOBBY CARROLL	ROBERT MOYE	J. R. TURNER
BILL CHAMBLESS	PAT PAGETT	JEWELL VANDIVER
HENRY CONE	GEORGE PARKER	BILL WINGATE
		J. W. ZETTEROWER

Top row: Anglin, Autry, Brannen, I. Bunce, J. Bunce, Carroll, Chambless, Cone. . . . Second row: Dubberly, Flynt, Fulcher, Hodges, Lever, Mason, Pagett, Pearson. . . . Third row: Purvis, Salley, Slayden, Talbert, Turner, Vandiver, Wingate, Zetterower.



HOME ECONOMICS

OFFICERS

ANN BLEN . . . *President*
 ALICE JO LANE . . . *Vice-President*
 KITTY DUBBERLY . . . *Secretary*
 EDNA NIVILLE . . . *Treasurer*
 MISS RUTH BOITON . . . *Sponsor*
 MRS. ROBSON . . . *Sponsor*

MEMBERS

DOROTHY ANDERSON
 EMMA JANF AUTRY
 JENNY BRANNEN
 LORRAINE BROCKLIT
 MARTHA CARTER
 MARY ANN DAVIS
 EMMIE FREEMAN
 MILBA FUNDERBURKE
 LETA GAY
 WINIFRED HARRELL
 MARTHA HARRISON
 FRANCES HUGHES

EDNA JACKSON
 SARA MASON
 NELLORENE MCCOLLUM
 OMILU MCELVEIN
 CLAIRE MINCEY
 HAZEL MIXON
 KATHRYN MORGAN
 KATRENA NELSMITH
 DORIS PARRISH

LYNNIE POWELL
 MERLE ANNE POWELL
 LOUISE THIGPEN
 SARA HELEN UPCHURCH
 NELL WATERS
 LOUISE WILLIAMS
 MADOLYN YOUNG



INDUSTRIAL ARTS

Standing: Barnard, K. Boddiford, London, G. Boddiford, Hartley, Neville. . . . Seated:
 DeLoach, Carroll, E. Carruth, Trowell, C. Carruth, Aldred, Hostetler.

OFFICERS

ERNEST TROWELL . . . *President*
 JAMES ALDRED . . . *Vice-President*
 ASA BARNARD . . . *Secretary*
 GEORGE BODDIFORD . . . *Treasurer*

MEMBERS

JAMES ALDRED
 ASA BARNARD
 GEORGE BODDIFORD
 BOBBY CARROLL
 CARLTON CARRUTH
 EDWARD CARRUTH
 JIMMIE DELOACH
 HERMAN HARTLEY
 GESMON NEVILLE
 ERNEST TROWELL

SPONSORS

MR. IVAN HOSTETLER
 MR. R. H. LONDON
 MR. KNAPP BODDIFORD



REFLECTIONS



Jam session jammed . . . Five and a half days are enough for some of us . . . Those in the middle is Frank . . . Fashion forecast? . . . We cannot IMAGINE where they are going . . . How about it, Maxanne? Smile for us, please!



AT T. C. the fraternities and sororities, though local, exist as a major force. They help each member to derive the benefits of a social life and intelligent group living. The fine spirit of fellowship and sympathetic interest that exists among the members tends to create an atmosphere of real home life. By bringing together those who have interests in common, the fraternities and sororities are helping to lay the foundations of friendship that will enrich life, long after college days are over. Though primarily social in purpose and existing for the benefit



An after-dinner confab



The CHILD SOCIAL



Charter members of Delta Sigma and Iota Pi Nu talk over old times

of the members, the fraternities and sororities are also a real aid to good college government, since each member feels a personal responsibility for the good name of his or her fraternity or sorority and is anxious that it should have a good reputation with faculty and students. They also do much to keep alive the traditions of the college and to create loyal alumni.



Fraternizing on the campus

EN'S LIFE



Seated: Carroll, Bolton, Wood, Bagley. . . . Second row: Anglin, Bowman, Stanford, Chambless, Stanfield, Wrinkle, Joyner, Vandiver, Hodges, Cartee. . . . Third row: Dunbar, Clanton, Barber, Rabun, Ingram.

BACHELORS' CLUB

HISTORY: *Founded in 1928.*

COLORS: *Green and White*

FLOWER: *Bachelor Button*

PURPOSE: *The promotion of ideas, ideals, and a comradeship of high integrity.*

MOTTO: *Beware of Women*

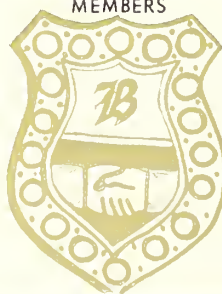
SONG: *"My Buddy"*

OFFICERS

BOBBY CARROLL	President
HENDRY BAGLEY	Vice-President
HERMAN WRINKLE	Secretary
JOE INGRAM	Treasurer
MISS MARIE WOOD, MISS RUTH BOLTON	Sponsors

MEMBERS

THERON ANGLIN
HENDRY BAGLEY
D. R. BARBER
DAVID BOWMAN
BOBBY CARROLL
WILLARD CARTEE
BILL CHAMBLESS
WILLARD CLANTON
NICHOLAS DUNBAR
HUGH HODGES



JOE INGRAM
HORACE JOHNSON
JOE JOYNER
ROY RABUN
B. H. RAMSEY
CHARLES STANFIELD
JOE PAT STANTFORD
HERMAN WRINKLE
JIM WRINKLE
TOM VANDIVER



First row: Stanfield, Dunn, Reiser, C. Carruth, Bagley, Wells. . . . Second row: E. Carruth, Patat, Dunbar, Jenkins, Anglin, Whitley.

BUGGER-DAGGER

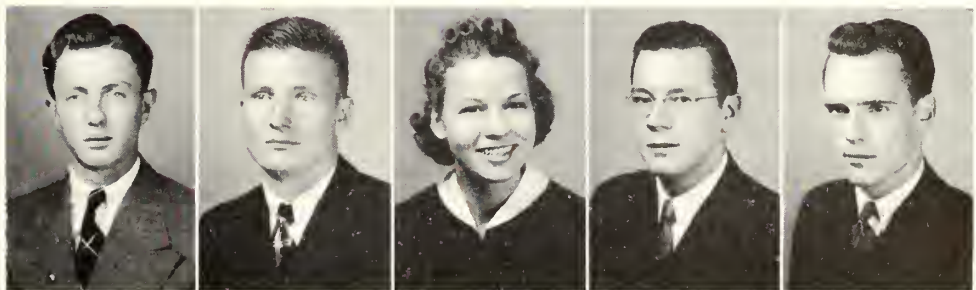
COLORS: Red and Black

PAT PAGETT Sponsor

MEMBERS

TOM PATAT
JOHN DUNN
ASA BARNARD
JACK REISER
TOM JENKINS
CARL HUTCHINS
HENDRY BAGLEY
THERON ANGLIN

CHARLES ALFORD
EDWARD CARRUTH
CLIFFORD WELLS
MILTON FINDLEY
CARLTON CARRUTH
NICHOLAS DUNBAR
CHESLEY WHITLEY
CHARLES STANFIELD



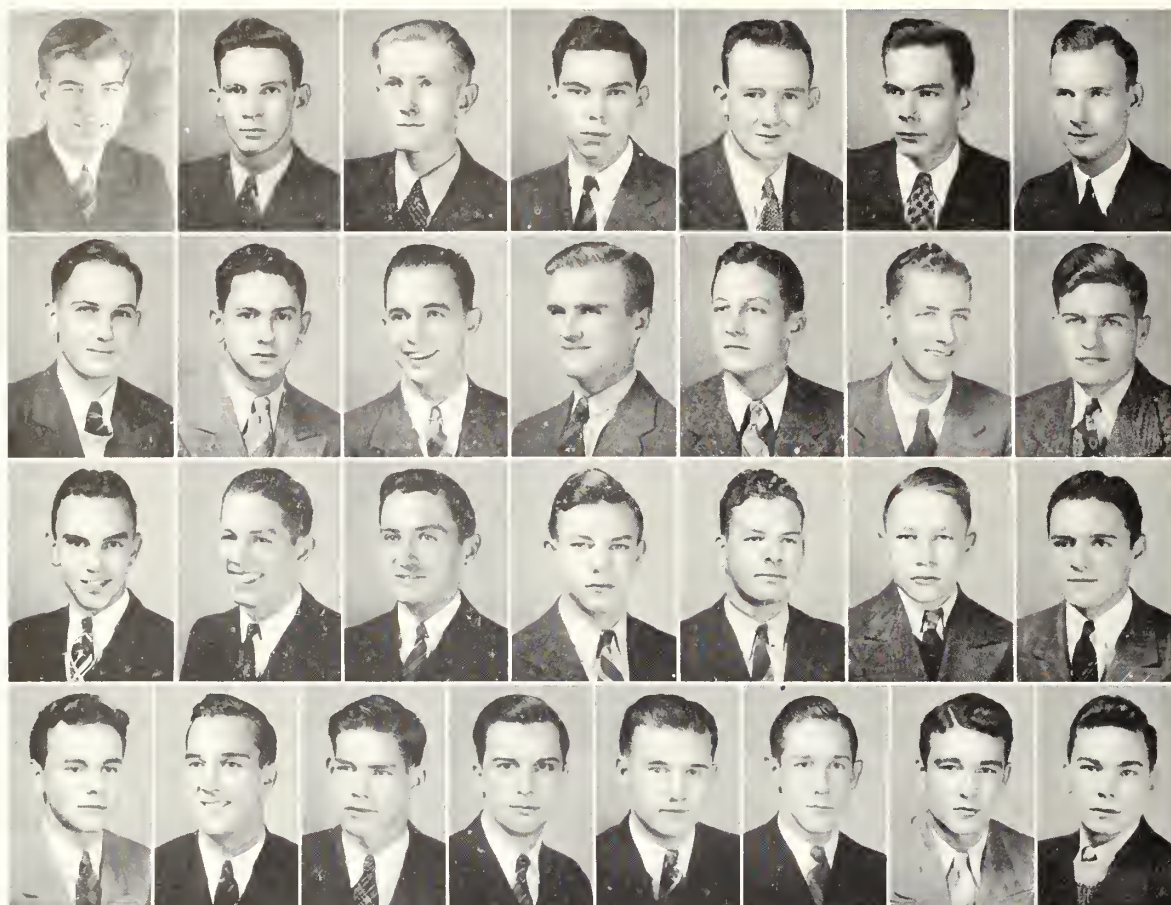
ALFORD

BARNARD

PAGETT

HUTCHINS

WELLS



First row: Barber, Bidgood, Braswell, Brown, Conoly, Cowart, Crook. . . . Second row: Curry, DeLoach, Douglas, E. Groover, G. Groover, Gerald Groover, Holloway. . . . Third row: Jordan, Joyner, Lane, Lever, Morrison, D. Olliff, Ramsey. . . . Fourth row: H. Robertson, J. Robertson, Thayer, D. Turner, R. Turner, Vandiver, Waters, Zetterower.

DELTA SIGMA

HISTORY: Founded G. S. M. C., Tifton, Ga., 1929; G. T. C., 1932.

SONG: "Auld Lang Syne"

FLOWER: Red Rose

COLORS: Gold and Blue



LEROY COWART
JOE JOYNER
GERALD GROOVER
D. R. BARBER, JR.
HAYGOOD MORRISON
MR. DAMON TURNER }
DR. R. J. H. DELOACH }

President
Vice-President
Secretary
Treasurer
Chaplain
Sponsors

MEMBERS

ALBERT BRASWELL
ROBERT BROWN
CURTIS CROOK
JIMMIE DE LOACH
B. L. DOUGLAS

FRANK JORDAN
CURTIS LANE
B. H. RAMSEY, JR.
HARRY ROBERTSON

JAMES THAYER
TOM VANDIVER
WILLIAM WATERS
J. W. ZETTEROWER

PLEDGES

BOB BIDGOOD
G. C. COLEMAN
JAMES CONOLY
THOMAS CURRY
EDWIN GROOVER

GEORGE GROOVER
KRANSON HOLLOWAY
JOE LEVER
DIGHT OLLIFF

FRANK OLLIFF
TINY RAMSEY
JODY ROBERTSON
J. R. TURNER



CATHERINE GAINES
Student Sponsor

IOTA PI NU



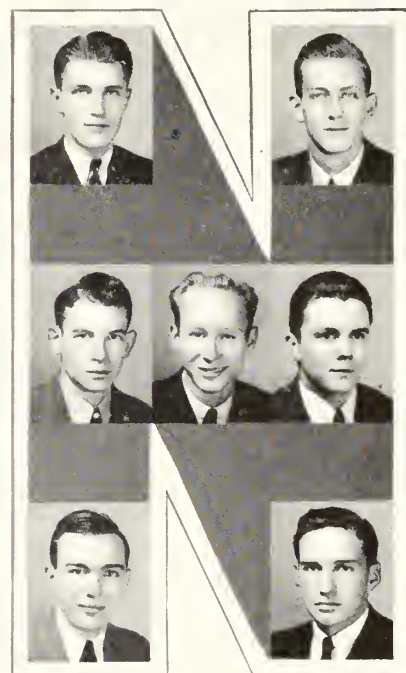
Founded in 1931

COLORS: *Scarlet and Emerald*

FLOWER: *Poinsettia*

OFFICERS

BILLY TALBERT	President
HERCHEL HAMILL	Vice-President
HERMAN WRINKLE	Secretary
TED BOOKER	Treasurer



James Aidred, Horace Johnston, Hugh Hodges, John King, Ross Rountree.

Billy Talbert, Rose Lockhart, Herchel Hamill, I. W. Bragg, Herman Wrinkle, Ted Booker, Joe Ingram, Hugh Maxwell, David Bowman.

Leon Culpepper, Cecil Olmstead, Wayne Culbreth, Sam Rumph, Tom Jenkins, Jack Reiser, Charles Layton.

Standing: Maxwell, Aidred, Wrinkle, Booker. . . Seated: Talbert, Hogarth, Lockhart, Hamill.



FRATRES IN FACULTATE

WILLARD CARTEL
WILLARD CLANTON
ROY RABUN
JIM WRINKLE

SPONSORS

ROSE LOCKHART
MISS LILLIAN HOGARTH



Front row: Pagett, Gainey, Taylor, Cromley, Lockhart, Carpenter. . . . Back row: Strickland, Conner, Vandiver, Breen, Smith.

PAN-HELLENIC *Council*

PURPOSE: To promote closer cooperation among the sororities on the campus with the hope of providing a more comprehensive social program.

SONG: "Memories"

COLORS: *Pink and Blue*

OFFICERS

JEWELL VANDIVER	<i>President</i>
WINONA CARPENTER	<i>Vice-President</i>
BETTY SMITH	<i>Secretary</i>
CATHERINE GAINLY	<i>Treasurer</i>

MEMBERS

ANN BREEN
WINONA CARPENTER
HELEN CONNER
DOROTHY CROMLEY
CATHERINE GAINLY

ROSE LOCKHART
PAT PAGETT
BETTY SMITH
SYBIL STRICKLAND
ANNIE MAE TAYLOR

JEWELL VANDIVER

DELTA LAMBDA DELTA

HISTORY: *Founded 1927.*

COLORS: *Crimson and Royal Blue*

FLOWER: *Rose*

SONG: *"Always"*

MOTTO: *A Good Time in a Good Way*



Peggy, Mary, Helen and Carolyn.

OFFICERS

WINONA CARPENTER	<i>President</i>
MARY FRIES	<i>Vice-President</i>
MARJORIE FOREHAND	<i>Secretary-Treasurer</i>
MR. RONALD NEIL	<i>Sponsor</i>
MRS. RONALD NEIL	<i>Sponsor</i>

MEMBERS

WINONA CARPENTER	MARY FRIES
PEGGY CORBETT	MARY GRAHAM
AGNES DINNARD	HELEN HARDWICK
MARJORIE FOREHAND	PIGGY HARDWICK
CAROLYN FOSTER	FRANCES SPERRY
ANNIE MAE TAYLOR	

First row: Annie Mae, Helen, Mary G., Peggy, Mary F., Carolyn. . . . Second row: Winona, Agnes, Marjorie, Frances.



DUX DOMINA



Top row: Brown, Copp, Foy, Gainey, Girardeau, Godbee. . . . Second row: Horn, Lariscy, Lockhart, McLeod, A. Powell, M. Powell. . . . Third row: Perry, Rogers, Strickland, Sands, Salley, Wynn.

MOTTO: *To lead rather than to be led*

COLORS: *Gold and White* FLOWER: *Chrysanthemum*



OFFICERS

CATHERINE GAINFY *President*
 ROSE LOCKHART *Vice-President*
 ELIZABETH HORN *Secretary*
 SYBIL STRICKLAND *Treasurer*
 DORIS SANDS *Chaplain*
 MIRIAM GIRARDEAU *Scribe*
 MR. and MRS. W. S. HANNER *Sponsors*
 W. S. HANNER, JR. *Mascot*

MEMBERS

MARJORIE COBB	MARY THOMAS PERRY
CATHERINE GAINFY	MARY POWELL
MIRIAM GIRARDEAU	MERLE ANNE POWELL
SARA GODBEE	DORIS SANDS
ELIZABETH HORN	SYBIL STRICKLAND
ROSE LOCKHART	BETTY WYNN

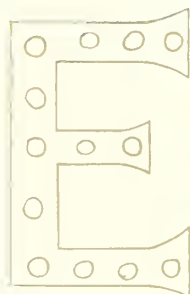
Standing: Sands, Girardeau, Horn, Strickland. . . .
 Seated: Gainey, Hanner, Lockhart.



PLEDGES

VIRGINIA BLITCH	MYRTLE LARISCY
MARGARET BROWN	CLEO McLEOD
MAXANNE FOY	BEULAH ROGERS
JOYCE JONES	NANCY JIM SALLEY

E P I C U R E A N



MOTTO: *Eat, drink, and be merry for tomorrow
you may die*

FLOWER: *Poinsettia*

SONG: *"Stardust"*

OFFICERS

ANN BREEN *President!*

BETTY SMITH *Vice-President*

MARY EDNA GUNTER *Secretary*

FRANCES BREEN *Treasurer*

MARGARET ANNE JOHNSTON *Chaplain*

MISS SUE HAMMACK *Sponsor*



Standing: Meg, Margaret Ann, Frances, . . . Seated: Betty,
Miss Hammack, Ann.

MEMBERS

MIRIAM BRINSON

FRANCES HUGHES

FRANCES DEAE

MARGUERITE MATHEWS

ANNE FULCHER

BILLIE TURNER

TOMMIE GRAY

OUIDA WYATT

PLEDGE

MARTHA WILMA SIMMONS



First row: Frances D., Frances H., Frances B., Betty, Martha Wilma, Ouida. . . Second row: Marguerite, Anne F.,
Margaret Anne, Meg, Ann B., Miss Hammack, Tommie, Miriam, Billie.



MISS TRUSSELL



Front row: Beth, Lody, Mrs. Dull, Emily, Fran, Lee, Sara Reid, Marie, Julie, Jenny. . . . Back row: Carolyn, Dottie, Jewell Pearl, Izzy, Dot A., Betty Mc.



Frances, Lorraine, Jewell, Dorothy and Emolyn.

OFFICERS

JEWELL VANDIVER	President
DOROTHY CROMLEY	Vice-President
FRANCES HARRISON	Secretary
LORRAINE BROCKETT	Treasurer
EMOLYN RAINEY	Chaplain
MISS MALVINA TRUSSELL	Sponsor

LAMBDA THETA CHI

MEMBERS

DOROTHY ANDERSON	JULIE MEADOWS
SARA REID BOWEN	CAROLYN MORRIS
LORRAINE BROCKETT	VIRGINIA MORRIS
DOROTHY CROMLEY	BETTIE MCLEMORE
LEE GOOLSBY	MARIE PEARSON
FRANCES HARRISON	EMOLYN RAINEY
EULA BETH JONES	ISABEL TRUSSELL

JEWELL VANDIVER

PLEDGES

EMILY CROMLEY

LYNETTE YANDLE

SONG: "I'll Be Faithful"

FLOWER: Sweetheart Rose

COLORS: Green and Gold

MOTTO: To strive, to seek, to find, and not to yield

SIGMA GAMMA



MOTTO: *To live for others rather than ourselves*

FLOWER: *Gardenia*

SONG: *"Night and Day"*

OFFICERS

PAT PAGETT	<i>President</i>
HELEN CONNOR	<i>Vice-President</i>
MARY KATHRYN THOMAS	<i>Secretary</i>
ROGER McMILLAN	<i>Treasurer</i>
DORIS TONEY	<i>Chaplain</i>
MISS EVA PARNELL	<i>Sponsor</i>
MR. and MRS. JOHNSON	<i>Sponsors</i>

MEMBERS

DOROTHY BERRY	EMMIE FREEMAN	RUTH KAMMERER	JEAN PEAGLER
JOY BOWDEN	DOROTHY FISHER	ALICE JO LANE	PAT PAGETT
LYNNE PAUL CLAXTON	KATHLEEN GROOVER	ESSIE LANGFORD	OLIVE RIPPARD
HELEN CONNOR	ALICE HARRIS	ROGER McMILLAN	MARY KATHRYN THOMAS
JACKIE COWAN	LORENE HEIDT	RUTH MURPHY	DONNA THIGPEN
RACHAEL CROUCH	AZILE HARTLEY	EDNA NEVILLE	DORIS TONEY
ANN CULLENS	SARAH HOWELL	CLEONELLE POWELL	MARJORIE WHEATLEY
MARY ISABEL FARMER			



"X" CLUB

MOTTO: *Happiness is not perfected until it is shared*

COLORS: *Yellow and Green*

FLOWER: *Daffodil*

OFFICERS

KATHRYN DUBBERLY	President
SALLIE SMITH	Vice-President
CLEONELLE POWELL	Secretary and Treasurer
DR. and MRS. CARRUTH	Sponsors
MISS MARIAN GROOVER	Sponsor

MEMBERS

FAY ALDERMAN
MARJORIE BOATRIGHT
MARJORIE BREWER
IRA LOIS BROWN
JANETTA CALDWELL
RUTH CONE
DOROTHY GOODE
BURDELLE HARRISON
AZILE HARTLEY
LORENE HEIDT

RUTH KAMMERER
MIRIAM MORGAN
RUTH MURPHY
EDWINA PARRISH
MARJORIE ROBERTS
GENE RUSHING
SUE SHIVLRS
DORIS TONEY
HILDA WARD



HIGHLIGHTS ON THE SOCIAL CALENDAR

OCTOBER 7. The Student Council opens the Social Season with a dance for the new students and faculty members. Good music and jitterbugs are in evidence. Competition begins among the boys over the cute freshman girls, and, prelude to Leap Year, vice versa.

OCTOBER 14. Pan-Hellenic stages a football game and dance at the Woman's Club. Council leads out through the goal posts.

OCTOBER 21. Delta Lambda Deltas have a scavenger hunt and guests get lost in a clever maze.

OCTOBER 28. Manless Dance is sponsored by W. A. A. It was fun without you boys, and were those prizes grand!

NOVEMBER 4. Musical notes and names drip from the walls of the Woman's Club at the Pi Nu formal to the tune of "My Dear."

NOVEMBER 11. The Delta Sigs really swing out—pledges, actives and alumni—to music by Carpenter after a tea-dance, banquet, and intermission party given by Mr. Turner at Dr. Pittman's home.

NOVEMBER 11. Bugger-Daggers' picnic at Lot's Creek—description of memorable moments, unprintable.

NOVEMBER 18. "Hellzapoppin" when the Lambda Theta Chis led into inferno with "Satan Takes a Holiday!"

NOVEMBER 23. Whistle blows at 8:30, beginning Epicurean's breakfast dance at Jackel. Was everybody Eppie!???

NOVEMBER 23. Student Council welcomes old grads back with a gala affair. Banquet, complete with dessert and speeches, was followed with a dance.

NOVEMBER 25. "X" Club has a picnic at Jones' Pond, and weren't those hamburgers good!

DECEMBER 2. Bachelors quicken the social pace with their first affair of the year. A banquet with a very softly lighted gym, and a very, very good dance afterwards.

DECEMBER 9. Candlelight Christmas formal is given by Dux Dominas. Spirits run high.

DECEMBER 16. Freshmen postpone that long-planned-for, twice-announced dance, to the sorrow of the children.

JANUARY 20. Flash! Bang!! Boom! Warplanes zoom—and the Dux Black-out. Few lights, if any, permitted.

JANUARY 27. "X" Club has a theatre party. Show was *very* good.

JANUARY 27. Extra! Delta Sigma Fraternity gives dance without decorations! "Inter" or "Miss" at West Hall. Dance continues 'til—guess what time—11:30!

JANUARY 30. President's Ball. All hands turn out to help with the expenses of the President's Campaign for health.

FEBRUARY 3. The crystal ball turns and signs of the zodiac appear to tell fair fortunes of the future to the Lambda Theta Chis at their formal dinner-dance at the Rushing.

FEBRUARY 10. The Epicureans have a red and white HEART, a tea dance, and formal at the Woman's Club. All Hearts were shattered and "Stardust" fell following Susie and Jake's leading out.

FEBRUARY 17. A glorified prison with glamorous D. L. D. convicts make up their winter formal.

FEBRUARY 24. Martha and George and the Colonial Dames dine and dance, and the Pi Nus do (almost) the minuet at their Winter Ball.

MARCH 2. Sigma Gammas "Go with the Wind" while Searlett and Rhett and the Tarleton twins dance in Tara's shadow.

MARCH 9. Leap Year! Leap Year! Student Council has girls go to Sanford for dates and do those boys have feet! Grand fun, eh, gentlemen?

MARCH 30. Great success for Y. W. and Y. M. at play night, as usual.

APRIL 6. Highlight of the social year is at Pan-Hellenic tea-dance and Spring formal. Dancing in a garden to Carpenter's music and oh, those memories resulting from "Memories"!

APRIL 13. Supper-dance at Club "X" by the "X" Club.

APRIL 13. Unlucky? Not for the D. L. D's. A grand time was had, as "Always."

APRIL 20. Bachelors at their formal Spring Banquet and Dance have the customary delicious fried chicken and the strains of "My Buddy," afterwards.

APRIL 27. Tea at 5:00, dinner at 8:00 and dancing 'til—with the Eppies as hostesses. Balloons, silver leaves, adorn grape arbor.

MAY 4. Sigma Gammas have wonderful time, "Night and Day," at their Spring dance.

MAY 11. The Dux get "sentimental"—well, over different ones, but not too much to have a lot of fun.

MAY 18. L. T. C. alumni and actives reunite at their "Green and Gold Ball" to dance under a golden sky on a green, green lawn; the memory of "I'll be Faithful" will always linger on.

MAY 25. Delta Sigs top-hat, white tie, and tail it to their grand climax—tea-dance, banquet, installation of officers, verbal bouquets to friends, favors to dates, tokens of appreciation to sponsors, welcome to old fratres, and, capping the climax of the formal card dance, they sing out on the words of the song so fraught with meaning to them—"Auld Lang Syne."

MAY 25. Bugger-Daggers have a gay and glorious time while dining and dancing.

JUNE 1. Gershwin's "Summertime" and Dvorak's "Going Home" were featured at the Pi Nus June Home-Coming Banquet and Dance to welcome old brothers back into the fold.

THE PROGRAM of play in our home is varied and comprehensive. Intercollegiate teams in football, basketball, boxing, tennis and track are sponsored by the college. A program in intramural sports is planned for all the children. This includes softball, swimming, tennis, volleyball, archery, basketball, dancing, speedball and individual sports such as badminton, shuffleboard, table tennis, horseshoes, tenpins, etc.

Every child in the home is encouraged to participate in some kind of recreational activities and all of those who do receive immeasurable benefit thereby.

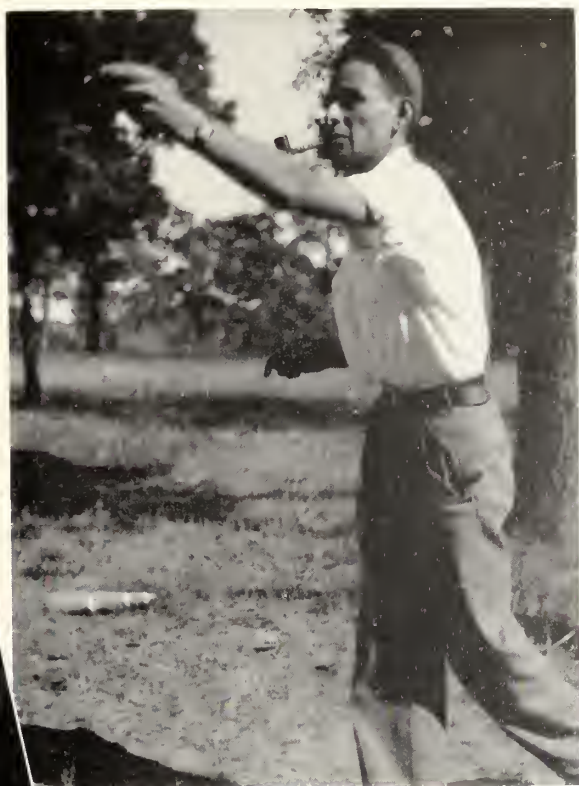
The athletic T is about the most prized award on the campus and any child can make an effort to win.



Out for speedball

THINGS CHILDREN





Harry throws a ringer



Both players must have won

THE PLAY

W. R. H. COUNCIL

MISS SUL HAMMACK *Sponsor*

"MEG" GUNTER *President*

MRS. G. H. BOWEN *Sponsor*



MISS SUSIE



MEG



HONEY



JANETTA



EMOLYN



MIRIAM

DOROTHY DURDEN *Baseball*

FRANCES BREEN *Basketball*

AZIEE HARTLEY *Speedball*



DOT



FROGGY



AZILE



MARGUERITE



FRANCES



CATHERINE

MARGUERITE MATHEWS *Tennis*

FRANCES HUGHES *Dancing*

CATHERINE GAINLY *Swimming*

LILA MAE NESMITH *Individual Sports*

KATHRYN GARDNER *Tumbling*

EDNA NEVILLE *Volleyball*



LILA



KITTY



EDNA

DANCE CLUB



Greeting

*Sponsored
by
W. A. A.*



Moving in opposing circles

OFFICERS

FRANCIS HUGHES	President
MARGUERITE MATHIWS	Vice-President
FRANCES HARRISON	Secretary-Treasurer
MISS SUE HAMMACK	Sponsor

INTRAMURAL SPORTS



Speedball Demons

*Sponsored
by
W. A. A.*



Volleyball Leaders



Basketball Champs

FOOTBALL



The stands from the field

WITH the best season in several years before it, the Blue Tide opened the 1939 football season with a loss to Stetson in De Land. In working up to the climaxing game with the University of Havana, in Havana, backed strongly by an enthusiastic student body and supported by a fifty-piece band, the Tide came back with a spirit that smothered five out of the nine remaining opponents. These victories included the twice repeated defeat of the University of Havana.

Seated: Hall, Ellison, Cox, Joyner, Anglin, Rountree, Reiser, Waller. . . . Standing: Moss, Coach London, Horne, Hammill, Langley, Paschal, McGowan, Pafford, Smith, Coach Smith. . . . Kneeling: Morrison, Cason, Morgan, Dunn, Barnes, Davis, Mize, Robertson.





Driving down the field

B. L. "CROOK" SMITH . . . *Head Coach*

Assistants

JIM WRINKLE

R. L. LONDON

W. S. HANNER



Coach talks to the boys

PLAYERS

Name	Position
JACK REISER	<i>Left Halfback</i>
ROBERT MOSS	<i>Left Halfback</i>
J. D. LANGLEY	<i>Center</i>
HAYGOOD MORRISON	<i>Center</i>
FRANK HORNE	<i>Guard</i>
JODY ROBERTSON	<i>Guard</i>
RALPH MIZE	<i>Guard</i>
THERON ANGLIN	<i>Guard</i>
CHARLES SMITH	<i>Tackle</i>
GEORGE PAFFORD	<i>Tackle</i>
SULLY DAVIS	<i>Tackle</i>
DELMAR MCGOWAN	<i>Tackle</i>
NEWTON PARKER	<i>End</i>
HERCHEL HAMILL	<i>End</i>
HILL PASCHAL	<i>End</i>

Name	Position
JACK MORGAN	<i>End</i>
ROSS ROUNTREE	<i>Quarterback</i>
JOE JOYNER	<i>Quarterback</i>
DAVIS BARNES	<i>Fullback</i>
CLINTON CASON	<i>Fullback</i>
JAMES HALL	<i>Right Halfback</i>
BILLY COX	<i>Right Halfback</i>
NORMAN SPERRY	<i>Right Halfback</i>
REYSE ELLISON	<i>Right Halfback</i>



Back row: Davis, L. Enlowe, Horne, B. Enlowe, Paschal, Pafford, Williams, Coach Smith. . . . Front row: Smith, Hall, DeLoach, Ellison, Bagley, Hamill.

B. L. SMITH, *Head Coach*

Player	Position
HENDRY BAGLEY	Guard
JIMMIE DELOACH	Forward
RESE ELLISON	Forward
BYRON ENLOWE	Guard
LAWRENCE ENLOWE	Forward
JAMIS HALL	Forward
HERCHEL HAMILL	Guard
GEORGE PAFFORD	Center
HILL PASCHAL	Forward
CHARLES SMITH	Center
LEE WILLIAMS	Forward

Pafford jumps
for the tip



BASKETBALL

THE SCHEDULE can tell more of the success of the basketball season than any words. With only four old players to fall back on, T. C. played fourteen games and won ten of that number. Twice T. C.'s defeat was at the hands of professional players. All in all, it was a very good season.

SCHEDULE

T. C.	. . .	29—South Georgia College	42
T. C.	. . .	36—Jewish Alliance . . .	31
T. C.	. . .	35—Middle Georgia . . .	23
T. C.	. . .	34—Celtics	43
T. C.	. . .	25—Ershine	28
T. C.	. . .	51—College of Charleston .	29
T. C.	. . .	35—North Georgia College .	32
T. C.	. . .	39—Brewton-Parker . . .	23
T. C.	. . .	30—Jewish Alliance . . .	23
T. C.	. . .	56—Armstrong	27
T. C.	. . .	31—Whiskered Wizards . .	36
T. C.	. . .	34—Armstrong	24
T. C.	. . .	40—Norman Park	33
T. C.	. . .	34—Mexico "Y"	23



T. C. against the Whiskered Wizards

Boxing TEAM



Left to right: Lever, Strickland, Bidgood, McCutcheon, Bandy, Bacon, Scott, Russell



McCutcheon and Bidgood in a friendly bout

THE BOXING TEAM, though small in size and number, has had an extraordinarily good season. Matched with teams both in and out of this state, T. C.'s team has shown up to a good advantage and the sextet of boxers of which it was composed had fun as well as experience in participating in this intercollegiate sport.

MEMBERS

T. A. BACON

KENNETH BANDY

BOB BIDGOOD

HERBERT MCCUTCHEON

KENNETH SCOTT

ORTEZ STRICKLAND

• JOE LEVER, *Manager*

MR. FIELDING D. RUSSELL

Coach



MR. RUSSELL, *Coach*

OTHER THINGS THE CHILDREN

Play

Folk dancing is delightful in
class or out



Demonstration of sustained movement



Hiking to Town



All these from whom to choose

THE CHILDREN had a difficult time in nominating possible winners in the beauty contest from all the beautiful girls in school and a much more difficult time in choosing the ten most beautiful from the group of thirty beauties nominated. Each student's having the privilege of voting for the ten girls he thought the prettiest made the final choice quite representative. Three representatives were selected from the Sophomore and Junior Classes and two were selected from the Senior and Freshman Classes. Five hundred children could not be wrong in choosing ten such pretty girls!

More than ten pretty girls were in the May Day pageant. In fact, almost all of the children took some part on the program. The queen and maid of honor were elected by all the children from the Senior Class. Each class chose their attendants to represent them in the court. The May Court 'Went With The Wind' and the dancers' performances portrayed the history of America from the time of Washington to 1940 swing and jitterbugs.

“TEN PRETTY





the ten prettiest girls

T T Y G I R L S "



A preview of one of the ten

Beau

FRANCES BREEN

JEWEL EVANS



ties

EULA BETH JONES



MYRTLE LARISCY

Beau

ROSE LOCKHART



CLEO McLEOD



ties

MARY THOMAS PERRY



BETTY SMITH

Beaulies

SYBIL STRICKLAND



ANNIE MAE TAYLOR



REFLECTIONS



An eyesore? No, a thing of beauty (from the back campus) . . .
 Pretty, Bachelors, but Pan-Hellenic's "Armstrong, we're layin' for
 ya!" won. Remember? . . . A grand opening, Tommiel . . . Loquats
 ripe yet, girls? . . . Hope this won't result in a call-down . . .
 Miss Veazy must not be around.





Meg Gunter crowns Rose Lockhart Queen of the May

May

COURT

ROSE LOCKHART *Queen*
 MEG GUNTER *Maid of Honor*
 MARY HENDERSON *Train Bearer*
 MARY RUTH PULLIAM *Crown Bearer*

Attendants

SENIORS

ANNE BREEN PAT PAGETT
 SYBIL STRICKLAND

JUNIORS

FRANCIS BREEN JULIA MEADOWS

SOPHOMORES

EULA BETH JONES BETTY SMITH

FRESHMEN

JEWEL EVANS KATHRYN JOYNER

A. Breen, F. Breen, Jones, Meadows, Pagett, Gunter, Lockhart, Joyner, Smith, Evans, McLeod, Strickland.





Southern Scene

American Scenes

EPISODE I. Colonial Scene.

Dances:

1. Quadrille No. 1
2. Badger Gavotte
3. Minuet



Pioneer Scene

EPISODE II. Pioneer Scene

Dances:

1. Virginia Reel
2. Arkansas Travelers
3. Old Dan Tucker
4. Indian Dance

EPISODE III. Slavery Scene

Dances:

1. Negro Spiritual
2. Pickin' Cotton
3. Pickaninny Antics



Can-can Girls

EPISODE IV. Southern Scene

Dances:

1. The Velta Waltz
2. Heel and Toe Polka
3. Rye Waltz.

EPISODE V. The Gay Nineties

Dances:

1. Pantomime - "Bicycle built for Two."
2. The Floradora Girls
3. Can-Can Dance - Dance Club

EPISODE VI. The Emerging 20th century

Dances:

1. The Big Apple
2. Jitterbugs



Jitterbugs Swing Out



Bobby and Sara Reid settle the peace terms . . .
 How about substituting for you, Billy? . . . Evolution?
 . . . Walking on water—frozen . . . Something's missing,
 don't we think, boys? . . . Waiting on fried chicken,
 of course . . . Peg . . . Faithful forever (they hope!)
 . . . Just posin' . . . Don't let her walk over you, B. L.
 . . . kitchen co-eds.



REFLECTIONS

REFLECTIONS



Sara and Roy, still at it . . . Administrative gossip . . . Pledges being nosy . . . We heard they had broken up, but it wasn't true . . . What the well-dressed initiate should wear. . . Wake up, Little Breeze and watch the birdie . . . That's a dodge in the background, but who cares . . . Dr. De calls this geography! Everybody should take it . . . Again! it's only because we see them together so much.



Internationalism. . . . Figure this one out. . . . Dogwood
and love in bloom. . . . Lady by the lake—must be
Marjorie. . . . In a sylvan setting, certainly. . . . Now
weren't they cute. . . . There are smiles. . . . Who is that
by you, Lottie?

REFLECTIONS



What are you holding, Sara? . . . They missed this one in 1900 . . . Rah for the Frosh! . . . Just polishin' up for the little Doctor . . . The editor's twin brother . . .
Hi, Girls . . . and Good-bye!

REFLECTIONS

THE AMERICAN OIL COMPANY

OFFICE DRIVE-IN SERVICE STATION

OPPOSITE JAECKEL HOTEL

"Watch the College Grow With Amoco"

A. B. McDOUGALD, Agent

Fill up with Amoco at College Pump

FRANKLIN DRUG COMPANY

REXALL QUALITY DRUGS

•

PROFESSIONAL PHARMACISTS

PHONE 2

STATESBORO

Compliments

of

JOHN EVERETT COMPANY

•

STATESBORO, GEORGIA

McLELLAN'S



A Variety of

5c and 10c Items To Fit Your Needs

Compliments

of

WALTER
ALDRED
COMPANY

•

EVERYTHING IN BUILDING
SUPPLIES

•

STATESBORO

GEORGIA

H. W. SMITH

Statesboro's Leading Jeweler

Headquarters for
SORORITY and FRATERNITY
JEWELRY

•

*Teachers and Students
Always Welcome*

•

20 South Main Street

STATESBORO

GEORGIA

H. MINKOVITZ
& SONS

•
DEPARTMENT
STORE

STATESBORO

GEORGIA

E. A. SMITH GRAIN
COMPANY

•
Everything in
BUILDERS' SUPPLIES *and*
FERTILIZERS

STATESBORO

GEORGIA

Phone 171

... DRINK ...



Coca-Cola

IN BOTTLES



It's the Refreshing Thing to Do

DONALDSON - SMITH CLOTHING
COMPANY

•
"OUTFITTERS FOR MEN AND BOYS"

STATESBORO

•
GEORGIA

BULLOCH DRUG COMPANY

•
Prescriptions A Specialty

•
WHITMAN CANDIES

5 S. Main Street

Phone 94-J

STATESBORO DRY CLEANERS

Our Personal Care Is Your Guarantee of

EXPERT CLEANING

Office 265

Plant 281

HARRY BRUNSON, Prop.

STATESBORO

•
GEORGIA

LANNIE F. SIMMONS

•
AUTOMOBILES - FERTILIZERS

•
STATESBORO, GEORGIA

Meet Your
Friends At...

THE
COLLEGE
PHARMACY

•
"WHERE THE CROWDS GO"

•
Prompt, Courteous Service

Phone 414

19 S. Main St.

OLLIFF & SMITH

FANCY GROCERIES

FRESH MEATS

•
SEEDS FOR THE GARDEN AND FIELDS

POULTRY FEED AND SUPPLIES

HAY AND GRAIN

•
11

PHONES

16



H. P. JONES, Distributor

Gulf Oil Products

STATESBORO, GEORGIA

PHONE 117

PHONE 164

Compliments

of

BRADLEY & CONE SEED AND FEED CO.

"If it's seed, if it's feed, we have it."

Good Germinating Seed
Fresh Manufactured Feed

34 West Main Street

Phone 377

Compliments

of

IDEAL SHOE SERVICE

Our Standard is Quality

STATESBORO, GEORGIA

"Independence is what happens when preparation
meets opportunity."

WILL YOU BE PREPARED?

Round out your preparation by acquiring the
habit of practicing thrift and economy.

SEA ISLAND BANK

Safety—Courtesy—Service

M E M B E R F . D . I . C .

*Quality First . . . Service Second
. . . Satisfaction Always*

ALDRED BROTHERS

GROCERIES . . . MEATS

Phone 472
STATESBORO GEORGIA

BRADY'S DEPARTMENT STORE

Featuring . . .

READY TO WEAR
SHOES AND HOSIERY
DRY GOODS AND NOTIONS

17 N. Main Street
STATESBORO GEORGIA

Compliments

of

BLITCH RADIO SERVICE

R. C. A. RADIOS
VICTOR RECORDS
SOUND DEVICES

STATESBORO GEORGIA

UNITED 5c TO \$5.00 STORES

•

Headquarters

for

Students

THE FASHION SHOP

"So reasonable" is what they all say!

COMPLETE LADIES' WEAR and ACCESSORIES

Phone 350
STATESBORO GEORGIA

Compliments

of

GROOVER AND JOHNSTON Insurance Agency

Phone 310
STATESBORO GEORGIA

CITY DRUG COMPANY

S. L. LANIER GEO. K. LANIER
Pharmacists

•

Phones 37 and 38
STATESBORO GEORGIA

Compliments

of

BULLOCH STOCK YARD

O. L. McLEMORE, Manager
Phone 324
STATESBORO GEORGIA

1920

1940

THE MOST OF OUR NEW BUSINESS
COMES FROM RECOMMENDATION
OF SATISFIED CUSTOMERS



Alfred Dorman Company

STATESBORO

SYLVANIA

JESUP



WE DELIVER PROMPTLY
AND COLLECT PROMPTLY

1920

1940

S. W. LEWIS, INC.

Ford

STATESBORO, GEORGIA

BANNER STATES PRINTING
COMPANY

"A Reliable Institution"

27 W. Main

Phone 421

STATESBORO, GEORGIA

BRANNEN - THAYER
MONUMENT COMPANY

•
"Monuments of Quality"
•

STATESBORO, GEORGIA

W. C. AKINS & SON

HARDWARE *and* GROCERY

•
Service Is Our Motto

SEE US BEFORE YOU BUY

Compliments

of

THACKSTON'S DRY
CLEANERS

•
HOBSON Du BOSE
Proprietor
•

41 E. Main Street

Phone 18

*When in Savannah Visit
the Store Beautiful . . .*

SHOES FOR ALL MEMBERS
OF YOUR FAMILY

•
GLOBE SHOE
COMPANY
•

17 E. Broughton Street

SAVANNAH

GEORGIA

BULLOCH TIMES

•
Your Home Newspaper
•

STATESBORO, GEORGIA

LOGAN HAGAN

TAXI and TRUCKING

Agents for

FIVE TRANSPORTATION CO.

Overnight Service from

ATLANTA - MACON - SAVANNAH

JACKSONVILLE

Day 172 . . . Phones . . . Night 381-M

Compliments

of

STATESBORO GROCERY CO.

•
STATESBORO, GEORGIA

STEINWAY PIANOS - KIMBALL PIANOS

HAMMOND ORGANS

ALNUTT MUSIC COMPANY

216 Broughton Street, West

SAVANNAH

GEORGIA

STATESBORO PROVISION
COMPANY

Manufacturers and Dealers

PURE CRYSTAL ICE

COLD STORAGE

STATESBORO

GEORGIA

When You Are In Savannah . . . Visit Our
Exhibit Rooms . . . See Our
Display of . . .

CRANE PLUMBING FIXTURES

CRANE COMPANY

ALONZO P. KEISKER, Manager

14 Broad Street

Savannah

•
Compliments

of

HINTON BOOTH

It's Smart to Be THRIFTY . . .

That's Why Students of
America Look to

PENNEY'S

•
J. C. PENNEY CO., INC.

Savannah

Georgia



COMPLIMENTS

. . . . OF

Statesboro Chamber
of Commerce





STATESBORO
WOMAN'S
CLUB



Orkin Exterminator Co., Inc.



PEST CONTROL SERVICE
TERMITE CONTROL

Phone 6444

28 E. Bryan

Savannah, Georgia

Compliments

of

JAECKEL HOTEL

Your Comfort Our Pleasure

STATESBORO

GEORGIA

Howard Lumber Company

BUILDERS'
SUPPLIES

STATESBORO

GEORGIA

Phone 353

CONGRATULATIONS STUDENTS!

*for Better Quality, Style and Fit in Shoes
or Hosiery*

Everybody Knows It's

THE FAVORITE SHOE STORE

14 E. Main Street
STATESBORO

ROY GREEN

WILLIAM SMITH

LANIER'S MORTUARY

FUNERAL DIRECTORS

Ambulance Service

Lady Assistant

Day 340 . . . Phones . . . Night 415

STATESBORO

GEORGIA

Gifts That Last . . .

GRIMES JEWELRY CO.

•

DIAMONDS - WATCHES - SILVERWARE

GLASSWARE - CHINA, ETC.

STATESBORO

GEORGIA

*Pace-makers for
Smart America . . .*

VARSITY TOWN CLOTHES

Exclusive at

The Jones Co.

Terrell T. Tuten—Carl J. Kraft

SAVANNAH

GEORGIA

Compliments

of

**Sancken's Ice Cream
Company**

•

AUGUSTA

GEORGIA

Compliments

of

H. M. TIPPINS

Agent for

ROYAL TYPEWRITERS

16 W. Bryan

SAVANNAH

GEORGIA

The Best Dressed Men Wear . . .



THE SCHWOB COMPANY

"All Over The South"

R. J. KENNEDY
President

J. L. MATTHEWS
Vice-President

W. L. DEJARNETTE
Cashier

Conservative Management
Courteous Service

Bulloch County Bank

Member of Federal Deposit Insurance Corporation

STATESBORO, GEORGIA

Statesboro Buggy and Wagon Company

HARDWARE - FARM IMPLEMENTS

GLASS

MULES - HARNESS

WIRE - PIPE - PIPE FITTINGS

STATESBORO

GEORGIA



Compliments

of

State and Georgia
Theatres



The Blue Tide

"WE ARE HERE TO SERVE"

BOOKS

CONFECTIONS

ICE CREAM

HOT DOGS

"LET US SERVE YOU"

Compliments of
H. S. CANFIELD

representing
HERFF-JONES COMPANY

All portraits in this book made by

Gaspar-Ware Studios

30-32 Fifth Street, N. W.

**ATLANTA
GEORGIA**

OFFICIAL PHOTOGRAPHERS FOR

The Reflector

ALL REFLECTOR negatives are held in our files for several years and personal photographs can be obtained at any time.

Write for information and special price list.



★ THE MARK THAT
IDENTIFIES THE SOUTH'S
FINEST YEARBOOKS

PHOTO-PROCESS ENGRAVING CO.

115 - 119 LUCKIE STREET ★ ATLANTA GEORGIA



SUCCESSFUL ANNUALS

Require the services of experienced and expert craftsmen, trained in every detail of the processes of creating • planning layout and design • typesetting • printing lithographing and binding ... Throughout half a century this company has pioneered in the production of the highest type of printing ... Our services include a special college annual sales and service organization ... Abundant equipment • modern and complete ... Prices representing maximum in value



FOOTE & DAVIES

PRINTING • LITHOGRAPHING • ENGRAVING

ATLANTA

RESERVE

LH

1

.302

1

acc

ZACH S. HENDERSON LIBRARY



0 2001 0488988 2

DEMCO





