

# Reflector

1939

Georgia Southern University

Follow this and additional works at: <https://digitalcommons.georgiasouthern.edu/reflector-yearbook>



Part of the [Higher Education Commons](#)

---

## Recommended Citation

Georgia Southern University, "Reflector" (1939). *Reflector Yearbook*. 12.  
<https://digitalcommons.georgiasouthern.edu/reflector-yearbook/12>

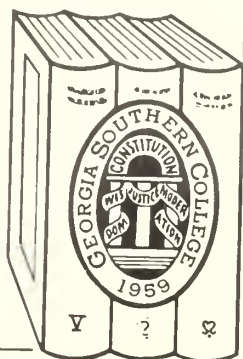
This book is brought to you for free and open access by the Student Media at Digital Commons@Georgia Southern. It has been accepted for inclusion in Reflector Yearbook by an authorized administrator of Digital Commons@Georgia Southern. For more information, please contact [digitalcommons@georgiasouthern.edu](mailto:digitalcommons@georgiasouthern.edu).



THE REFLECTOR  
S·G·T·C· 1939



GEORGIA  
SOUTHERN COLLEGE  
LIBRARY



Georgia Southern College  
Zach S. Henderson Library

Georgia Southern University  
Zach S. Henderson Library









Digitized by the Internet Archive  
in 2014

<https://archive.org/details/reflector1939na>





*The*  
REFLECTOR  
1939

---





Copyright 1939  
By  
LOUISE ENGLISH  
Editor

WILLIAM GERKEN  
Business Manager

---

PROGRESSIVE EDUCATION AT



*The*  
REFLECTOR

Published by the Senior Class

SOUTH GEORGIA TEACHERS COLLEGE

*Collegeboro, Georgia*

*1939*



---

SOUTH GEORGIA TEACHERS COLLEGE





"Where the sweet magnolias blossom."

## Foreword

TIME MARCHES ON . . .

. . . And in those schools that are trying to keep abreast of the times we see students engaging in activities . . . purposeful activities . . . meaningful experiences. Their work is planned in big blocks or UNITS OF WORK. In each unit there are many activities . . . activities that lead on into further activities.

This issue of the REFLECTOR portrays college life as a large unit of work, taking each class as one of the stages in the development of the unit. The real test of any unit is its carry-over into life. Therefore, following the four stages of the development of the unit, its application in a real-life situation here on the campus is shown.

It is the hope of the editors that when you are evaluating this unit of work this book may serve as a reminder of the many happy and worthwhile experiences that have contributed toward the acquisition of desirable knowledge and information, habits and skills, attitudes and appreciations.



May  
Alpha

# Contents

## I. UNIT OF WORK

ADMINISTRATION  
FACULTY  
CAMPUS  
STUDENT GOVERNMENT  
STUDENT PUBLICATIONS  
STAGES IN DEVELOPMENT OF UNIT  
Initiation—Freshmen  
Questions and Problems—Sophomores  
Activities—Juniors  
Culmination—Seniors  
Application—Alumni

## II. SUPERVISED STUDY

NON-SOCIAL CLUBS  
OTHER ORGANIZATIONS

## III. SUPERVISED PLAY

ATHLETICS  
SOCIAL CLUBS

## IV. FEATURES

BEAUTY SECTION  
MAY DAY



Showing T. C. to Henry Ford and vice versa.



# DIVISION OF EDUCATION

CHAIRMAN OF DIVISION AND DIRECTOR OF LABORATORY SCHOOLS

MR. WALTER L. DOWNS

HIGH SCHOOL CRITIC TEACHERS OF CAMPUS LABORATORY SCHOOL

MR. HENRY J. McCORMACK . . . . . *Principal*

MR. SAM SCHILLER . . . . . MISS MARY WILL WAKEFORD

MISS FRANCES KNOWLTON

ELEMENTARY SCHOOL CRITIC TEACHERS OF CAMPUS LABORATORY SCHOOL

MISS MARIE WOOD

MISS JEAN SANFORD

MISS MARION GROOVER

MRS. HENRY J. McCORMACK

DENMARK LABORATORY SCHOOL STAFF

MISS KATE HOUX . . . . . *Supervisor*

MR. GEORGE DONALDSON . . . . . *Principal*

SUPERVISORS

MISS JANE FRANSETH . . . . . *Supervisor of Bulloch County Schools*

MISS ELIZABETH DONOVAN . . . . . *Supervisor of Ogeechee Laboratory School*

PROFESSORS OF EDUCATION

DR. J. E. CARRUTH

MR. LESLIE JOHNSON



Mr. Walter L. Downs

FRONT: Miss Marie Wood, Miss Marion Groover. BACK: Miss Jean Sanford, Mrs. Henry J. McCormack.



Mr. Sam Schiller, Miss Mary Will Wakeford, Mr. Henry J. McCormack, Miss Frances Knowlton.

# DEDICATION

FOR MANY years South Georgia Teachers College has tried to supply Georgia with the very best teachers possible. The Division of Education has had a large part of the responsibility in keeping practices in this institution abreast of the times, by considering new trends, evaluating practices and selecting those that teachers may use to best advantage. Much credit is due the Division for its part in making the college one of the outstanding teacher-training schools in the state. For this reason we, the REFLECTOR Staff of 1939, dedicate this issue of the REFLECTOR to the Division of Education—our guide in Progressive Education.

Dr. J. E. Carruth, Mr. Leslie Johnson.



Miss Jane Franseth, Miss Elizabeth Donovan.



Mrs. Kate Houx, Mr. George Donaldson.







UNIT



Including Administrative Officers, Faculty,  
Campus, Student Government, Student  
Publications, and five stages in the develop-  
ment of the Unit.

OF WORK



# D E A N S



MISS YEAZY  
Dean of Women



MRS. IDA R. CAZORT  
House Mother of Juliette Lowe Hall



MISS ELIZABETH EDENFIELD  
House Mother of West Hall



MRS. ALLENE C. MOORE  
House Mother of Anderson Hall



MISS SOPHIE JOHNSON  
Dean of Men



MR. Z. S. HENDERSON  
Dean

# The PRESIDENT



"PROGRESSIVE" is a bewitching word. It turns its back to the past and implies that halcyon days await us. While it throws no stones at the yesterdays—they played their part—it looks with confidence to the days which are ahead. "Tomorrow" is ever an untapped mine filled with wealth, wonder, and wisdom and only a "progressive" holds the magic key to unlock the door to its coveted treasure.

"Progressive education" is the vehicle on which progress rides from what was to what is to be. Its vocabulary contains the educational shibboleths of the hour. All education must accept progress as its goal. It must dedicate itself to new and better means of attaining more fruitful objectives.

This yearbook is an interpretation of "progressive education" as interpreted by the "progressives" who constitute the Senior Class of South Georgia Teachers College in 1939. May the ages approve it as a worthy expression of the "progressive" ideal is the wish of one who indulges the hope that he, also, is a "progressive."

MARVIN S. PITTMAN.





# Officers of Administration and Campus Scenes

## *Administration Building*

---



MR. R. L. WINBURN  
Bursar

MISS MAE MICHAEL  
Secretary to the President





*West Hall*



MR. W. C. HAYGOOD  
Librarian

MISS VIOLA PERRY  
Registrar







## *East Hall*

MISS NELL SMITHSON  
Dietitian



MR. ROY RABUN  
Assistant Bursar





DR. C. M. DESTLER  
Director of Junior Division



DR. J. E. CARRUTH  
Director of Senior Division



*Sanford Hall*





## *New Laboratory School*



MR. W. L. DOWNS  
Director of Laboratory Schools

MISS QUEEN ELIZABETH COLLINS  
Secretary to Director of Laboratory Schools



## Faculty and Campus Scenes

### DIVISION OF EDUCATION

MISS MARY WILL WAKEFORD . . . . .	<i>Critic Teacher</i>
MISS ELIZABETH DONOVAN . . . . .	<i>Supervisor of Ogeechee Laboratory School</i>
MISS KATE HOUX . . . . .	<i>Supervisor of Denmark Laboratory School</i>
MISS JANE FRANSETH . . . . .	<i>Supervisor of Bulloch County Schools</i>
MRS. HENRY McCORMACK . . . . .	<i>Critic Teacher</i>
MR. HENRY J. McCORMACK . . . . .	<i>Principal of Campus Laboratory School</i>
MR. L. W. JOHNSON . . . . .	<i>Associate Professor</i>
DR. J. E. CARRUTH . . . . .	<i>Professor</i>
MR. GEORGE W. DONALDSON . . . . .	<i>Principal of Denmark Laboratory School</i>
MISS MARION GROOVER . . . . .	<i>Critic Teacher</i>
MISS MARIE WOOD . . . . .	<i>Critic Teacher</i>
MISS FRANCES KNOWLTON . . . . .	<i>Critic Teacher</i>
MISS JEAN SANFORD . . . . .	<i>Critic Teacher</i>
MR. SAM SCHILLER . . . . .	<i>Critic Teacher</i>



*Old Laboratory School*





*The Little Store*



*Science Hall*

## DIVISION OF EXACT SCIENCES

MISS MALVINA TRUSSELL  
*Associate Professor*

MR. R. D. PULLIAM  
*Associate Professor*

MR. PAUL THOMPSON  
*Instructor*

MR. W. B. MOYE  
*Assistant Professor*

MR. W. S. HANNER  
*Chairman, Associate Professor*

MR. Z. S. HENDERSON

MISS VIOLA PERRY



*Gymnasium*



*Health  
Cottage*

DIVISION OF HEALTH AND PHYSICAL EDUCATION



MR. B. L. SMITH  
*Chairman*

MISS RUBY HOKE  
*Registered Nurse*

MRS. GENARIO HONEYCUTT BOWEN  
*Instructor*

MISS SUSIE HAMMACK  
*Assistant Professor*

DR. J. H. WHITESIDE  
*Medical Doctor*

MR. JIM WRINKLE  
*Instructor*



## DIVISION OF LIBRARY SCIENCE

MISS ELEANOR RAY . . . . . *Assistant Librarian*  
 MISS HASSIE MAUDE McELVEEN . . . . . *Assistant Librarian*  
 MR. WILLIAM C. HAYGOOD . . . . . *Librarian*  
 MISS ZULIEME LANE . . . . . *Assistant Librarian*  
 MISS SALLIE SMITH . . . . . *Library Assistant*  
 MRS. KENNETH L. BING . . . . . *Library Assistant*



## DIVISION OF SOCIAL SCIENCE

MR. WM. E. S. FLORA  
*Instructor*

MISS HESTER NEWTON  
*Assistant Professor*

MR. R. J. H. DeLOACH  
*Associate Professor*

DR. C. M. DESTLER  
*Chairman, Professor*



*Library*





## *Anderson Hall*

### DIVISION OF FINE AND PRACTICAL ARTS

MR. RONALD J. NEIL  
*Associate Professor—Music*

MISS LILLIAN HOGARTH  
*Instructor—Art*

MRS. CAZORT  
*Music*

MR. LEONARD KENT  
*Instructor—Business Education*

MR. ERNEST HARRIS  
*Instructor—Band and Orchestral Music*

MRS. ESTHER BARNES  
*Instructor—Piano*

MR. IVAN HOSTETLER  
*Associate Professor—Industrial Arts*

MR. E. G. LIVINGSTON  
*Chairman, Industrial Arts*

MR. KENNETH L. BING  
*Professor—Industrial Arts*

MISS RUTH BOLTON  
*Associate Professor—Home Economics*

MISS NELL SMITHSON  
*Instructor—Home Economics*

MISS FRANCES KNOWLTON  
*Instructor—Home Economics*





*Juliette Lowe*



## DIVISION OF LANGUAGES

DR. ABNER KELLEY  
*Associate Professor*

DR. C. W. SMITH  
*Chairman, Associate Professor*

MR. M. A. OWINGS  
*Assistant Professor*

MRS. MARJORIE GUARDIA  
*Assistant Professor*

MR. ROBERT DONALDSON  
*Assistant Professor*

## In Memoriam



Mrs. P. D. Landrum





Barber, Girardeau, Proctor, Thomas.

## STUDENT GOVERNMENT

IF STUDENTS are to participate in a democratic social order they must learn to do so by experience. The Student Council is an excellent example of Democracy on the campus. The officers are elected by popular vote from the different classes and co-operate in carrying out the best possible program of activities for the student body. After ten years of worthwhile existence the voice of over five hundred students still proves itself to be effective. The officers have shown themselves to be liberal, progressive, and capable in promoting the welfare of the student body as a whole. It is the function of this council to promote wholesome and worthy student activity, to create an atmosphere of mutual interest between faculty and students and to plan a democratic social program which will enrich the life of every student.

# CAMPUS GOVERNMENT

## OFFICERS

DAVID PROCTOR . . . . .	<i>President</i>
JUANITA THOMAS . . . . .	<i>Vice-President</i>
MIRIAM GIRARDEAU . . . . .	<i>Secretary</i>
D. R. BARBER . . . . .	<i>Treasurer</i>

## MEMBERS

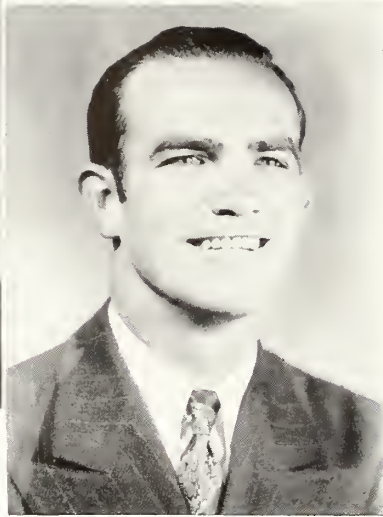
COPELAND OZIER . . . . .	<i>President of Senior Class</i>
ELI HILL . . . . .	<i>Senior Representative</i>
PRISCILLA PRATHER . . . . .	<i>Senior Representative</i>
HARRY WILSON . . . . .	<i>Senior Representative</i>
TOM VANDIVER . . . . .	<i>President of Junior Class</i>
B. H. RAMSEY . . . . .	<i>Junior Representative</i>
JEWELL VANDIVER . . . . .	<i>Junior Representative</i>
JOE JOYNER . . . . .	<i>President of Sophomore Class</i>
ORNIAN HAMILTON . . . . .	<i>President of Freshman Class</i>
JACK MURRAY . . . . .	<i>Freshman Representative</i>



Ramsey, Wilson, Prather, Ozier, Barber, Girardeau, Proctor, Thomas, Joyner, Hill, Vandiver, Hamilton, Murray.



LOUISE ENGLISH  
*Editor*



WILLIAM GERKEN  
*Business Manager*

## EDITORIAL STAFF

LOUISE ENGLISH	Editor
BEN JONES	Associate Editor
C. D. SHELEY	Literary Editor
ELOISE MINCEY	Club Editor
WILLARD CLANTON	Club Editor
EVELYN BAGGETT	Art Editor
BOBBY CARROLL	Sports Editor
WESLEY SHERMAN	Photographic Editor



Baggett, Jones, Carroll, English, Sherman, Clanton, Mincey.



# 39 REFLECTOR STAFF

"WE LEARN WHAT WE LIVE." May you ever, in your reminiscences fondly recall the many experiences of college life that proved to be learning situations. May this book serve as a book of memories—happy memories—of wonderful dreams, high ambitions, glorious hopes, and of wondering what the world had in store for you. May this book help you to recapture that spark—that ardor—that is at its peak during college days. If the REFLECTOR of 1939 serves you in this capacity, we, the staff, shall feel richly repaid for every effort put forth.

## BUSINESS STAFF

- WILLIAM GERKEN . . . . . *Business Manager*
- PRISCILLA PRATHER . . . . . *Assistant Business Manager*
- EMILY AKINS . . . . . *Advertising Manager*
- JAMES SHARPE . . . . . *Advertising Manager*
- CHARLIE PAINE . . . . . *Circulation Manager*



Sharpe, Gerken, Prather, Paine, Akins.



C. D. SHELEY  
Editor



SEATED: Bacon, Sheley, Bonner.  
STANDING: Browne, Dunbar.

## THE GEORGE - ANNE

Established 1927

Member Georgia Collegiate Press Association

Published Bi-weekly by the Students of South Georgia Teachers College, Collegeboro, Ga. Address Communications to Box 133, Collegeboro, Ga. Published Bi-Weekly from September Till June Except During Holidays.

Subscription Rate: 10c per Copy, \$1.00 per Year

Entered as Second-class Matter at the Postoffice at Collegeboro, Ga., under Temporary Permit.

C. D. SHELEY . . . . .	<i>Editor</i>
NICHOLAS DUNBAR . . . . .	<i>Assistant Editor</i>
CHARLES BROWNE . . . . .	<i>Sports Editor</i>
WYATT BONNER . . . . .	<i>Business Manager</i>
T. A. BACON . . . . .	<i>Circulation Manager</i>
ESSIE LANGFORD . . . . .	<i>Assistant Business Manager</i>

### EDITORIAL STAFF

Priscilla Prather, Eloise Mincey, Kitty Gardner, Frances Deal, Miriam Girardeau, Miriam Townsend, James Aldred, Jouett Davenport, Gesmon Neville, Frank Frazier, Floyd Wardlow, Bill Chambliss, Homer Blitch.



SEATED: Townsend, Mincey, Hughes, Gardner, Deal, Prather.  
STANDING: Wardlow, Sheley, Chambliss, Davenport.



1. *Initiation or Stimulation of Interest—Freshmen*

---





## OFFICERS

ORMAN L. HAMILTON, *President* . . . . . Brunswick, Ga.  
DELTA SIGMA  
 SHELDON L. CHAPMAN, *Vice-President* . . . . . Waycross, Ga.  
 MARJORIE E. COBB, *Secretary-Treasurer* . . . . . Bainbridge, Ga.  
DUN DOMINA  
 JACK MURRAY, *Student Council Representative*. . . . . Forsyth, Ga.

W. B. AKINS . . . . . Register, Ga.  
 HELEN MAE ALLEN . . . . . Statesboro, Ga.  
 ANGIE ALTMAN . . . . . Sylvania, Ga.  
 LAURA J. ALTMAN . . . . . Sylvania, Ga.  
 ONA DELL ALTMAN . . . . . Alma, Ga.  
 ALICE ANDERSON . . . . . Register, Ga.  
 THERON O. ANGLIN . . . . . Wadley, Ga.  
BUGGER DAGGER  
 MILTON ARDEN . . . . . Guyton, Ga.  
 MAGGIE MAE ARNETTE . . . . . Sylvania, Ga.  
 JOHN AUSTIN . . . . . Beaufort, N. C.  
 MARJORIE BACON . . . . . Willie, Ga.  
 KENNETH BANDY . . . . . Ringgold, Ga.  
 VIRGINIA NELL BLITCH . . . . . Glennville, Ga.  
DUN DOMINA

MILDRED O. BOSTWICK . . . . . Bainbridge, Ga.  
D. L. D.  
 MILDRED BOWEN . . . . . Register, Ga.  
 SARA REED BOWEN . . . . . Register, Ga.  
 DAVID S. BOWMAN . . . . . Bromwood, Ga.  
 PEARL S. BRAGG . . . . . Dover, Ga.  
 JENNIE BRANNEN . . . . . Hazlehurst, Ga.  
 MORGAN LFE BRANNEN . . . . . Register, Ga.  
 SHELTON BRANNEN . . . . . Stilson, Ga.  
BUGGER-DAGGER  
 MARTHA E. BRASSELL . . . . . Gibson, Ga.  
 HERMAN BRAY . . . . . Oglethorpe, Ga.  
 LEILA MAE BREWTON . . . . . Groveland, Ga.  
 LOIS V. BREWTON . . . . . Groveland, Ga.  
 LUTIE BREWTON . . . . . Daisy, Ga.  
 LUCY BRINSON . . . . . Woodcliff, Ga.





EUGENE H. BROWN . . . . .	Stilson, Ga.
YVONNE BROWN . . . . .	Cobbtown, Ga.
ISAAC N. BUNCE . . . . .	Statesboro, Ga.
JIMMIE BUNCE . . . . .	Statesboro, Ga.
CHARLES C. BUNN . . . . .	Cedartown, Ga.
ELIZABETH BURKHALTER . . . . .	Claxton, Ga.
GLOVER BURNEY . . . . .	Bainbridge, Ga.
J. B. BUXTON, JR. . . . .	Girard, Ga.
IDA LEWIS CANADY . . . . .	Swainsboro, Ga.
JUNE CARPENTER . . . . .	Ft. Lauderdale, Fla.
EPICURÆAN	
TOM CARPENTER . . . . .	Ft. Lauderdale, Fla.
IOTA PI NU	
AIRENE CARTER . . . . .	Soperton, Ga.
MONTINE CASON . . . . .	Waycross, Ga.
ELIZABETH CATO . . . . .	Ellabell, Ga.
WILLIAM F. CHAMBLESS . . . . .	Sylvania, Ga.
LYNNE PAULE CLANTON . . . . .	Kite, Ga.
HAZEL CLEVELAND . . . . .	Fort Valley, Ga.
JOSEPHINE COLEMAN . . . . .	Cobbtown, Ga.
RUBY COLEMAN . . . . .	Rentz, Ga.

RUTH CONE	Brooklet, Ga.
MARTHA COWART	Atlanta, Ga.
RUSSELL D. COWART	Collins, Ga.
HARRY CRAWLEY	Thomaston, Ga.
IOTA PI NU	
MRS. WILLOPEAN CROWELL	Soperton, Ga.
EVELYN DARLEY	Statesboro, Ga.
FREIDA DARSEY	Amsterdam, Ga.
SARA WILL DARSEY	Groveland, Ga.
FERRALYN DAVIDSON	Rentz, Ga.
MARGIE DEKLE	Statesboro, Ga.
DEALVA DELOACH	Statesboro, Ga.
CLOTHILDE DENITTO	Brooklet, Ga.
THOMAS DEWS	Edison, Ga.
BUGGER-DAGGER	
OPIHELIA DORMINY	Fitzgerald, Ga.
ADELE DOZIER	Thomson, Ga.
JOHN HENRY DUNN	Devereux, Ga.
ERMATRUE DURRENCE	Glennville, Ga.







AZILE HARTLEY . . . . . Miami, Fla.

MARY E. HATCHER . . . . . Thomson, Ga.

GRACE HATTEN . . . . . Swainsboro, Ga.

COY L. HEATH . . . . . Bainbridge, Ga.

LORENE HEIDT . . . . . Marlow, Ga.

THELMA HERNDON . . . . . Surrency, Ga.

ROBERT HILL . . . . . Alamo, Ga.

GENE L. HODGES . . . . . Statesboro, Ga.  
IOTA PI NU

JOHN B. HOGARTH . . . . . Brunson, S. C.  
DELTA SIGMA

JEAN HOLLAND . . . . . Manassas, Ga.

ROGER HOLLAND . . . . . Statesboro, Ga.

EULA MAE HOLLOWAY . . . . . Graymont, Ga.

ANNA WILL HOLLOWAY . . . . . Register, Ga.

VENETA HOOKS . . . . . Stillmore, Ga.

WM. FLOYD HUMPHREYS, JR. . . . . Sycamore, Ga.

MARY ANNA HURSEY . . . . . Statesboro, Ga.

ALICE VIRGINIA HURST . . . . . Waynesboro, Ga.

JOE C. HURST . . . . . Egypt, Ga.

JOSEPH L. INGRAM . . . . . Nelson, Ga.

JOHN H. JARRIEL . . . . . Collins, Ga.

THOMAS JENKINS . . . . . Edison, Ga.  
BUGGER-DAGGER

ELMA J. JOHNSON . . . . . Graymont, Ga.

HORACE JOHNSON . . . . . Swainsboro, Ga.

MARGARET ANN JOHNSTON . . . . . Statesboro, Ga.  
EPICUREAN

ARABEL JONES . . . . . Statesboro, Ga.

EULA BETH JONES . . . . . Marshallville, Ga.  
L. T. C.

JOHN THOMAS JONES . . . . . Dublin, Ga.

MABLE JORDAN . . . . . Thomson, Ga.

GERALDINE KEEFE . . . . . Waycross, Ga.

PILCHER KEMP . . . . . Statesboro, Ga.

EUDINE KENNEDY . . . . . Reidsville, Ga.

MARY KENNEDY . . . . . Metter, Ga.

WARNER L. KENNON . . . . . Statesboro, Ga.  
IOTA PI NU

EDNA KENT . . . . . Millen, Ga.

SARA KLOEPFER . . . . . Fort Valley, Ga.

DEALVA KICKLIGHTER . . . . . Glennville, Ga.

MARY EVELYN KING	Marietta, Ga.	ROBERT MOYE	Adrian, Ga.
ALICE JO LANE	Statesboro, Ga.	WILLIAM A. MULLIS	Tifton, Ga.
ELIZABETH LATHAM	Sycamore, Ga.	HILDA MURPHY	Statesboro, Ga.
MILDRED LEE	Oliver, Ga.	ROBERT NELSON	Reidsville, Ga.
VONCILE LIMERICK	Hilltonia, Ga.	GERALDINE NELSON	Waverly, Ga.
TROY MALLARD	Statesboro, Ga.	SUSIE B. NESMITH	Oliver, Ga.
ABBIE MANN	Ashburn, Ga.	EDNA NEVILLE	Statesboro, Ga.
RUTH MARTIN	Ludowici, Ga.	KATHERINE NORMAN	Waycross, Ga.
MARGUERITE MATTHEWS	Statesboro, Ga.	MATTIE OLIFF	Statesboro, Ga.
MARY McCARTY	Attapulcus, Ga.	WALLACE O'STEIN	Waresboro, Ga.
FRANCES McCRARY	Gay, Ga.	NANCY B. PARKER	Fitzgerald, Ga.
GENEVA McDANIEL	Duluth, Ga.	WILMER PARKER	Ludowici, Ga.
MARGARET McDANIEL	Dexter, Ga.	LOUISE PARRISH	Brooklet, Ga.
GRACE McELVEEN	Brooklet, Ga.	CLAUD T. PATAT	Cuthbert, Ga.
MARCLA McNILEY	Waycross, Ga.	LATHA PHILLIPS	Soperton, Ga.
CLARE MINCEY	Ogeechee, Ga.	REBA PLYLER	Clanton, Ga.
JAMES A. MOORE	Collegeboro, Ga.	SARAH POINDENTER	Statesboro, Ga.
HAYGOOD MORRISON	Thomson, Ga.	CLEONELLE POWELL	Kite, Ga.



LINNIE POWELL . . . . . Wrightsville, Ga.  
 MARY D. POWELL . . . . . Sylvania, Ga.  
 JAMES PROCTOR . . . . . Woodbine, Ga.  
IOTA PI KAPPA  
 DRU DE G. RAMBO . . . . . Macon, Ga.  
 BILL T. RAMSEY . . . . . Statesboro, Ga.  
DELTA SIGMA  
 JOHN W. REISER . . . . . Clio, Ga.  
 MARY F. ROBINSON . . . . . Rosier, Ga.  
 BEULAH ROGERS . . . . . Reidsville, Ga.  
 ELLEN SANDERS . . . . . Adrian, Ga.  
 EUNICE SANDERS . . . . . Adrian, Ga.  
 WILLIAM F. SARTAIN . . . . . Molena, Ga.  
 OLIVIA SCHRAMM . . . . . Moultrie, Ga.  
 THOMAS SCOTT . . . . . Millen, Ga.  
 CLARA SEARS . . . . . Lumber City, Ga.  
 SYBIL SHEPARD . . . . . Dexter, Ga.  
 WESLEY SHERMAN . . . . . Savannah, Ga.  
 SUSIE E. SHIVERS . . . . . Vidette, Ga.  
"X"  
 BETTY SMITH . . . . . Statesboro, Ga.  
EPICUREAN

CHARLIE D. SMITH . . . . . Macon, Ga.  
 CORINE SMITH . . . . . Daisy, Ga.  
 GERALDINE SMITH . . . . . Manassas, Ga.  
 LOUELLA SMITH . . . . . Lake Park, Ga.  
 W. C. SPIVEY . . . . . Metter, Ga.  
 JOE STANFORD . . . . . Cuthbert, Ga.  
 Z. L. STRANGE, JR. . . . . Statesboro, Ga.  
 GENEVIEVE STRAZZO . . . . . Brooklet, Ga.  
 NANCY STRICKLAND . . . . . Waycross, Ga.  
 THOMAS STRICKLAND . . . . . Mt. Dora, Fla.  
 CLAUDE H. SULLIVAN . . . . . Perkins, Ga.  
 ANNIE MAE TAYLOR . . . . . Millen, Ga.  
D. L. D.  
 LOUISE THIGPEN . . . . . Adrian, Ga.  
 RACHEL TILLMAN . . . . . Glenwood, Ga.  
 MYRA TIPPINS . . . . . Claxton, Ga.  
 ISABEL TRUSSELL . . . . . Junction City, Ga.  
I. T. C.  
 JOHN R. TURNER . . . . . Gay, Ga.  
 EBNA TYSON . . . . . Nashville, Ga.





# FRESHMEN



IRIS R. UNDERWOOD . . . . . Oglethorpe, Ga.

SARAH UNDERWOOD . . . . . Waycross, Ga.

JEAN VAN HORN . . . . . Chiseta, Ga.

WILMER WALLACE . . . . . Louisville, Ga.

JOHN CLAY WALLER . . . . . Tennille, Ga.

FLOYD WARDLOW . . . . . Ashburn, Ga.

DEWITT WARNOCK . . . . . Tarrytown, Ga.

JAMES W. WARNOCK . . . . . Alma, Ga.

ROY PATE WARREN . . . . . Stillmore, Ga.

HARRY C. WATERS . . . . . Daisy, Ga.

NELL WATERS . . . . . Hilltonia, Ga.

KATHERINE WATSON . . . . . Metter, Ga.

WILLIAM WATSON . . . . . Thomson, Ga.

HAL CHESLEY WHITLEY . . . . . Osierfield, Ga.

WILLIAM L. WILKINSON . . . . . Bainbridge, Ga.  
DELTA SIGMA

FRANCES WILLIAMS . . . . . Glennville, Ga.

JAMES LAMON WILLIAMS . . . . . Pulaski, Ga.  
BUGGER-DAGGER

OSBORN LEE WILLIAMS . . . . . Register, Ga.

MARCIA WILLIAMSON . . . . . Oak Park, Ga.

RUFUS C. WILSON . . . . . Statesboro, Ga.

WILLIAM R. WINGATE . . . . . Pelham, Ga.

GERALDINE YORK . . . . . Gay, Ga.

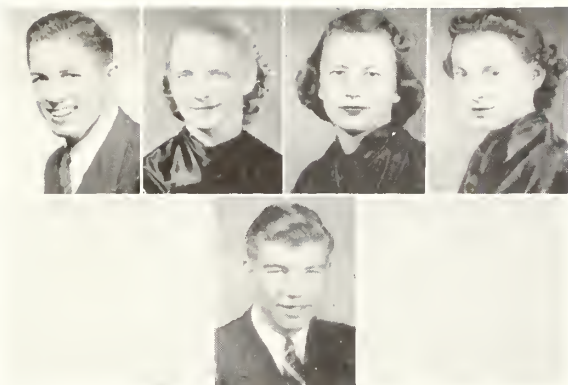
MADOLYN YOUNG . . . . . Tennille, Ga.

MARION A. YOUNG . . . . . Thomson, Ga.  
DELTA SIGMA



## *2. Questions and Problems—Sophomores*

---



#### OFFICERS

- JOE R. JOYNER, *President* . . . . . Screven, Ga.  
DELTA SIGMA
- MARION LANIER, *Vice-Pres.* . . . . Statesboro, Ga.  
DUX DOMINA
- CATHERINE GAINES, *Sec'y* . . . . . Bainbridge, Ga.  
DUX DOMINA
- SEPHALEE HUTCHINSON, *Treas.* . . . . Adrian, Ga.
- D. R. BARBER . . . . . Bainbridge, Ga.  
*Student Council Representative*



- MARY ALTMAN . . . . . Sylvania, Ga.
- WM. DEAN ANDERSON . . . . . Statesboro, Ga.  
IOTA PI NU
- WINONA ANDERSON . . . . . Claxton, Ga.
- SARA ATTAWAY . . . . . Wrens, Ga.
- EMMA JANE AUTREY . . . . . Guyton, Ga.
- JOHN BEN AYERS . . . . . Canon, Ga.
- JOAN BACON . . . . . Glennville, Ga.
- T. A. BACON . . . . . Manassas, Ga.
- MARY ELLEN BATTLE . . . . . Wadley, Ga.  
"X"
- CARROLL BEASLEY . . . . . Statesboro, Ga.
- ELIZABETH BENNETT . . . . . Glennville, Ga.
- JAMES BLITCH . . . . . Glennville, Ga.  
DELTA SIGMA
- HOMER BLITCH . . . . . Statesboro, Ga.
- MARJORIE BOATRIGHT . . . . . Claxton, Ga.
- GEORGE BODDIFORD . . . . . Sylvania, Ga.
- MARGARET BODDIFORD . . . . . Sylvania, Ga.



# SOPHOMORES

ELLIOTT BOSWELL	Robinson, Ga.
ALBERT BRASWELL <small>DELTA SIGMA</small>	Statesboro, Ga.
FRANCES BREEN <small>EPICUREAN</small>	Jesup, Ga.
KATHRYN BROWN	Summit, Ga.
MARY ELIZABETH BROWN	Garfield, Ga.
SAM BURGESS	Ashburn, Ga.
HARRY BURNES	Bainbridge, Ga.
EARL BYRD	Patterson, Ga.
DOROTHY CALDWELL <small>alpha</small>	Gay, Ga.
JANETTA CALDWELL <small>alpha</small>	Gay, Ga.
AUDREY CASON	Ellabell, Ga.
WILLIAM CLIFTON	Statesboro, Ga.
THOMAS COX	Attapulgus, Ga.
JOHN C. CROMLEY <small>IOTA PI NU</small>	Brooklet, Ga.
CURTIS CROOK <small>DELTA SIGMA</small>	Thomson, Ga.
FRANCES DEAL <small>EPICUREAN</small>	Statesboro, Ga.
DORIS DeLOACH	Claxton, Ga.
MRS. MYRTICE DeLOACH	Hagan, Ga.
ERNESTINE DRIGGERS	Statesboro, Ga.
DOROTHY DURDEN	Statesboro, Ga.
DOROTHY ELKINS	Sandersville, Ga.
LOUISE ELKINS	Sandersville, Ga.
LOY A. EVERETTE	Oliver, Ga.
CHESS FAIRCLOTH	Statesboro, Ga.
KATHLEEN FERGUSON	Thomaston, Ga.
MILTON FINDLEY <small>BUGGER-DAGGER</small>	Lyons, Ga.
FRANK S. FRAZER	Fitzgerald, Ga.
MERVIN FUTRAL	Bartow, Ga.





J. A. GARDNER, JR. . . . . Pulaski, Ga.  
 FULTON A. GLISSON . . . . . Metter, Ga.  
 GLADYS GNANN . . . . . Marlow, Ga.  
 JULIA EMILY GOFF . . . . . Statesboro, Ga.

WILLIAM A. GOOD . . . . . Cedartown, Ga.  
 D. B. GOULD . . . . . Statesboro, Ga.  
 C. W. GRAHAM . . . . . Washington, Ga.  
 TOMMIE GRAY . . . . . Waynesboro, Ga.  
 EPICUREAN

CORA LEE GREENE . . . . . Metter, Ga.  
 WILLARD GREENE . . . . . Dearing, Ga.  
 ALBERT Q. HAGAN . . . . . Oliver, Ga.  
 BURDELLE HARRISON . . . . . Halcyon Dale, Ga.  
 D. L. D.

EMILY HEATH . . . . . Warwick, Ga.  
 LOUIDA HENDRIX . . . . . Summit, Ga.  
 VIRGINIA HILL . . . . . Hilltonia, Ga.  
 EVELYN HODGES . . . . . Guyton, Ga.

NEAL HODGES . . . . . Guyton, Ga.  
 ELIZABETH HORN . . . . . Bainbridge, Ga.  
 HAROLD HOUSTON . . . . . Sylvester, Ga.  
 FRANCES HUGHES . . . . . Brooklet, Ga.  
 DUX DOMINA  
 IOTA PI NU  
 EPICUREAN

M. C. HURSEY . . . . . Statesboro, Ga.  
 CHARLIE JEREMIAS . . . . . Washington, Ga.  
 LELA MAY JOHNSON . . . . . White Oak, Ga.  
 J. BRANTLEY JOHNSON . . . . . Statesboro, Ga.  
 DELTA SIGMA

MYRTLE LARISCY . . . . . Sylvania, Ga.  
 EVELYN LEE . . . . . Statesboro, Ga.  
 ROSE LOCKHART . . . . . Miami, Fla.  
 EVERETTE LOOSIER . . . . . Thomaston, Ga.  
 DUX DOMINA



MARGUERITE MCCARTHY . . . . .	White Oak, Ga.
BETTIE McLEMORE . . . . .	Statesboro, Ga.
MARY MERCER . . . . .	Donovan, Ga.
SARA MORRIS . . . . .	Swainsboro, Ga.

ROBERT MOSS . . . . .	Doertun, Ga.
ALMA MOUNT . . . . .	Statesboro, Ga.
PAUL MURPHY . . . . .	Millen, Ga.
EDDIE NAJJAR . . . . .	Cedartown, Ga.

KATRENA NESMITH . . . . .	Groveland, Ga.
LILA M. NESMITH . . . . .	Statesboro, Ga.
JESSIE NEVILLE . . . . .	Statesboro, Ga.
MARGUERITE NEVILLE . . . . .	Statesboro, Ga.

ETHIEL NIX . . . . .	Lyons, Ga.
FRANK OLLIFF . . . . .	Statesboro, Ga.
GEORGE E. PARKER . . . . .	WOODCLIFF, Ga.
JOSEPH J. PARKER . . . . .	Rocky Ford, Ga.

HENRY GRADY PARRISH . . . . .	Brooklet, Ga.
HIRAM S. PATTERSON . . . . .	Louisville, Ky.
DELTA SIGMA	
MARGARET PEACOCK . . . . .	Harrison, Ga.
HOWELL PERRYMAN . . . . .	Cedartown, Ga.
IOIA PINC	

MARY E. POWELL	Swainsboro, Ga.
DUX DOMINA	
IRIS V. PRICE	Wrightsville, Ga.
EMOLYN N. RAINEY	Columbus, Ga.
L. T. C.	
HARRIS RAPE	Perry, Ga.
IOTA PLUM	

MARGARET REMINGTON . . . . .	Statesboro, Ga.
OLIVE L. REPPARD . . . . .	DUX DOMINA Fitzgerald, Ga.
ALMAND ROACH . . . . .	Dublin, Ga.
GENE RUSHING . . . . .	Statesboro, Ga.





## SOPHOMORES



ELBERT C. SANDERS . . . . . Pembroke, Ga.  
 JEANNETTE SASSER . . . . . Statesboro, Ga.  
 ELLENDER SCALES . . . . . Homer, Ga.  
 LOY SCOTT . . . . . Augusta, Ga.

REBECCA SHEAROUSE . . . . . Myrtle Beach, S. C.  
 JOSEPHINE SIMMONS . . . . . Metter, Ga.  
 MARTHA LANE SIMPSON . . . . . Fortson, Ga.  
 ANNE SLADE . . . . . Bartow, Ga.

CAROLINE SMITH . . . . . Swainsboro, Ga.  
 DORA EVELYN SMITH . . . . . Savannah, Ga.  
 RUBY B. SMITH . . . . . Statesboro, Ga.  
 IMA SPELL . . . . . Lyons, Ga.

C. ROBERT STRIPLING . . . . . Albany, Ga.  
 VIRGINIA TOMLINSON . . . . . Statesboro, Ga.  
 GRACE UNDERWOOD . . . . . Summertown, Ga.  
 GERTRUDE URQUEHART . . . . . Waycross, Ga.

CONNIE M. USHER . . . . . Sylvania, Ga.  
 EMORY WATKINS . . . . . Brooklet, Ga.  
 JO BELLE WHELCHER . . . . . Lyons, Ga.  
 ELEANOR WILLIAMSON . . . . . Oak Park, Ga.

HEYWARD WILSON . . . . . Statesboro, Ga.  
 WILLIAM A. WINN . . . . . Harlem, Ga.  
 WILLIAM E. WOODRUM<sup>IOTA PI NU</sup> . . . . . Millen, Ga.  
 HERMAN M. WRINKLE<sup>IOTA PI NU</sup> . . . . . Dalton, Ga.

REBA YARBROUGH . . . . . Thomaston, Ga.  
 L. T. C.  
 FRANK ZETTEROWER . . . . . Dublin, Ga.  
 DELTA SIGMA



### 3. *Activities - Juniors*

---



## OFFICERS

TOM VANDIVER, *President* . . . . . Summit, Ga.

DELTA SIGMA

SALLIE SMITH, *Vice-President* . . . . . Statesboro, Ga.

"X"

MIRIAM GIRARDEAU, *Secretary-Treasurer* . . . . . Claxton, Ga.

BUX DOMINA

JEWELL VANDIVER, *Student Council Representative* . . . . . Summit, Ga.

L. T. C.

B. H. RAMSEY, *Student Council Representative* . . . . . Statesboro, Ga.

DELTA SIGMA



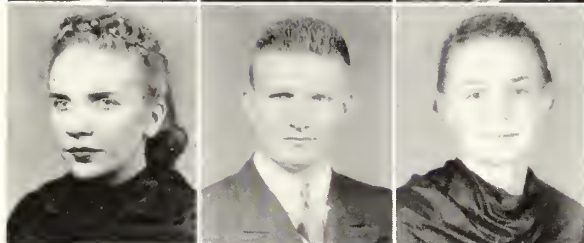
• J U N I O R S •



JAMES W. ALDRED . . . Statesboro, Ga.  
IOTA PI NU

JOHN ALLEN . . . Woodland, Ga.

J. CLYDE ANDERSON . . . Dixie, Ga.  
BUGGER-DAGGER



LORRAINE ARNSDORFF . . Amsterdam, Ga.  
L. T. C.

ASA BARNARD . . . Glennville, Ga.

DOROTHY BERRY . . . Columbus, Ga.



TED W. BOOKER . . . Macon, Ga.  
IOTA PI NU

IRENE BORLAND . . . Bainbridge, Ga.

GRACE BOWEN . . . Portal, Ga.



I. W. BRAGG, JR. . . . Gray, Ga.  
IOTA PI NU

THOMAS B. BRANTLEY . . Hilltonia, Ga.

ANN BREEN . . . Jesup, Ga.  
EPI CURIAN

# • J U N I O R S •

MARY BRIGMAN . . . . . Banley, Ga.

LORRAINE BROCKETT . . . . . Bainbridge, Ga.

I. T. C.

IRA LOIS BROWN . . . . . Leslie, Ga.

"X"

ROBERT J. BROWN . . . . . Statesboro, Ga.

DELTA SIGMA

DANA A. BUTLER . . . . . Fort Valley, Ga.

BUGGER-DAGGER

WINONA A. CARPENTER, Statesboro, Ga.

D. L. D.

ROBERT C. CARROLL . . . . . Sparta, Ga.

CARLTON CARRUTH . . . . . Statesboro, Ga.

EDWARD CARRUTH . . . . . Statesboro, Ga.

WILLIAM CHAMBLESS . . . . . Dawson, Ga.

ELSIE LEE CHEEK . . . . . Leslie, Ga.

BILL COOPER . . . . . Sylvania, Ga.





WINIFRED CORBETT . . . Pearson, Ga.  
D. L. D.

LEROY COWART . . . Atlanta, Ga.  
DELTA SIGMA

DOROTHY CROMLEY . . . Brooklet, Ga.  
L. T. C.

JAMES C. DASHER . . . Valdosta, Ga.

JOUETT DAVENPORT, JR. . Augusta, Ga.

JIMMIE R. DELOACH . . . Pembroke, Ga.  
DELTA SIGMA

ADOLPH DRURY . . . Brunswick, Ga.

KATHRYN DUBBERLY . . . Glennville, Ga.  
"X"

NICHOLAS L. DUNBAR . . . Milhaven, Ga.  
BUGGER-DAGGER

CLEO A. EDENFIELD . . . Statesboro, Ga.

M. WALTER FLANDERS . Wrightsville, Ga.

ELIZABETH FORD . . . Sylvester, Ga.





MARJORIE A. FOREHAND . Pinehurst, Ga.

KATHRYN GARDNER . . . Ellabell, Ga.

MILBURN GLENN . . . Soperton, Ga.

REBECCA GRACE . . . . . Elko, Ga.  
D. L. D.

MARY DUKES GRINER . . . Stilson, Ga.

GERALD GROOVER . . . Statesboro, Ga.  
DELTA SIGMA

MARY EDNA GUNTER . Louisville, Ga.  
EPICUREAN

HERSCHEL HAMILL . . . Arlington, Ga.  
IOTA PI NU

MARIE HAND . . . . . Climax, Ga.

ISABELLE E. HARDY . . . Statesboro, Ga.

PIERRE HARPER . . . . . Osierfield, Ga.

L. CALVIN HARRISON . . . Brooklet, Ga.



AGNES D. HODGES . . . . Brinson, Ga.  
L. T. C.

HENRY L. HODGES . . . . Douglas, Ga.

LAURA HODGES . . . . Guyton, Ga.

MARGARET JONES . . . . Matthews, Ga.

JANICE KENMORE . . . . Hartwell, Ga.

HELEN A. KESSLER . . . . Rincon, Ga.

VERA A. KESSLER . . . . Marlow, Ga.

VIRGINIA W. KING . . . . Cusseta, Ga.  
D. L. D.

A. D. LAFAVOR . . . . Avera, Ga.

L. C. LEE . . . . Ft. Lauderdale, Fla.

HUGH CLYDE MAXWELL . . Climax, Ga.  
IOTA PI NU

DOROTHY MCCRIMMON, Mt. Vernon, Ga.

# • J U N I O R S •

SARA A. MCDANIEL . . . . Duluth, Ga.

WILLIAM MCLEOD . . . . Cuthbert, Ga.  
DELTA SIGMA

ELIZABETH MILLER . . . . Savannah, Ga.

ROBERT MILLER . . . . New Smyrna, Fla.

WM. GESMAN NEVILLE, JR.,  
Statesboro, Ga.

MANORA NEW . . . . Statesboro, Ga.

FRANCES L. NIPPER . . . . Archer, Fla.

ANNE PENNINGTON . . . . Hazlehurst, Ga.

LEONA PERKINS . . . . Cofferton, Ga.

MACK PICKETT . . . . Richland, Ga.

MILDRED PITTMAN . . . . Savannah, Ga.

NELL PITTMAN . . . . Americus, Ga.  
"X"







JANE A. POOL . . . . Guyton, Ga.

INEZ RUSHTON . . . . Rocky Ford, Ga.

MERLE ANNE POWELL . Swainsboro, Ga.  
DUX DOMINA

DORIS SANDS . . . . . Daisy, Ga.  
DUX DOMINA

JOHN S. ROBERTS . . . . Matthews, Ga.

JOHN F. SIMPSON . . . . Lawrenceville, Ga.

JOSEPH ROBERTSON . . . Americus, Ga.  
DELTA SIGMA

MINEOLA SMITH . . . . . Douglas, Ga.

VIRGIL ROBINSON . . . . Statesboro, Ga.

WILLIE NELL SMITH . . . Savannah, Ga.

LAWRENCE ROWELL . . . Moultrie, Ga.

NELL STARKEY . . . . . Savannah, Ga.

• J U N I O R S •

JAMES EDWIN THOMAS . Attapulgus, Ga.  
BUGGER-DAGGER

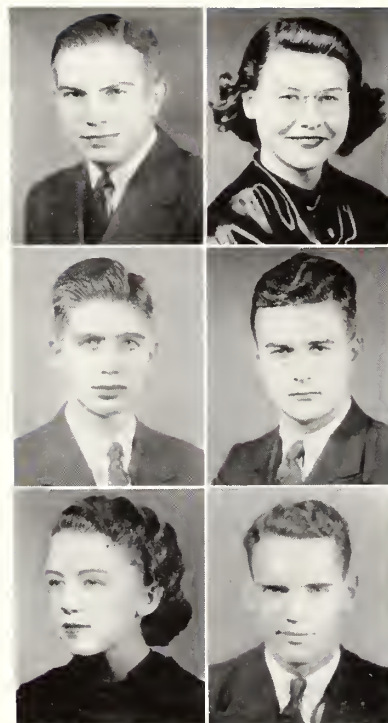
MARGARET NELL THOMPSON, Vidalia, Ga.

ERNEST L. TROWELL . . . . Oliver, Ga.

HARRY L. VAUSE . . . . Garfield, Ga.

DORIS WALLACE . . . . Statesboro, Ga.  
B. L. D.

CLIFFORD WELLS . . . . Clinan, Ga.  
BUGGER-DAGGER





#### *4. Culmination-Seniors*

---



CLYDE COPELAND OZIER

*President*

Montezuma, Ga.

GENERAL SCIENCE

Iota Pi Nu; Bachelors Club; Y. M. C. A. Cabinet, 3; Football, 2, 3, 4; Basketball, 4; Tennis, 2, 3, 4; Tumbling, 3; President Iota Pi Nu, 4; Class President, 4; Student Council, 4; House Council, 4; Transfer, Mercer.

HAROLD JAMES RIGSBY

*Vice-President*

Bowdon, Ga.

SOCIAL SCIENCE

Iota Pi Nu; Bachelors Club; Basketball, 2, 3, 4; Y. M. C. A., 3, 4; Vice-President Senior Class; Football, 2, 3, 4; Transfer, Bowdon College.

ANNE CECILIA FELTON

*Secretary*

Ideal, Ga.

ENGLISH

Lambda Theta Chi; Treasurer L. T. C., 3; President L. T. C., 4; Y. W. C. A. Cabinet, 3, 4; Senior Class Secretary; Pan-Hellenic Council, 4; House Council, 3; Home Economics Club, 3.

COPELAND OZIER

HAROLD RIGSBY

ANNE FELTON

ALICE HILL

ELI HILL

HARRY WILSON

PRISCILLA PRATHER



## GRADUATING CLASS

ALICE VIRGINIA HILL

*Treasurer*

Bainbridge, Ga.

ELEMENTARY EDUCATION

Dux Domina; President Dux Domina, 2, 4;  
W. A. A., 1, 2, 3; Y. W. C. A., 1, 2, 3;  
Dramatic Club, 1, 2, 3; Glee Club, 3; Home  
Economics Club, 4; House Council, 2, 4;  
Treasurer Senior Class.

HARRY B. WILSON

*S. S. R.*

Fitzgerald, Ga.

HISTORY

Iota Pi Nu; Bachelors Club; Football, 3, 4;  
Student Council, 4; House Council, 4; I. R.  
C., 4; Royal Order of Bushwhackers; Trans-  
fer, Middle Georgia College.

PRISCILLA PRATHER

*S. S. R.*

Washington, Ga.

ELEMENTARY EDUCATION

Epicurean; Band, 1, 2; Secretary Epicureans,  
1; President Epicureans, 2; Secretary-Treas-  
urer W. A. A., 2; House Council, 2, 3, 4;  
Y. W. C. A. Cabinet, 2, 3, 4; May Court,  
2, 3; President W. A. A., 3, 4; Vice-President  
Epicureans, 3, 4; Vice-President Pan-Hellenic,  
3, 4; Secretary Student Council, 3; Student  
Council, 4; Iota Pi Nu Sponsor, 3, 4; Dance  
Club, 4; *George-Anne* Staff, 4; REFLECTOR  
Staff, 4; Y. W. C. A., 1, 2, 3, 4; Beauty  
Section, 4.

ELI HILL, JR.

*Student Council Representative*

Dawson, Ga.

SOCIAL SCIENCE

Bachelors Club; Football, 1, 2, 3, 4; Student  
Council, 3, 4; Administrative Council, 4;  
President Sanford Hall, 4; Y. M. C. A.  
House Council, 2, 4; Royal Order of Bush-  
whackers.



# GRADUATING CLASS



WILLIAM H. ADAMS

Avera, Ga.

BIOLOGY

Bachelors Club; Industrial Arts Club, 2, 3, 4;  
Vice-President Industrial Arts Club, 4; Track,  
2, 3, 4; Y. M. C. A., 1, 2, 3, 4; Transfer,  
Emory.

EMILY AKINS

Statesboro, Ga.

ELEMENTARY EDUCATION

Epicurean.

BLANCHE ANDERSON

Statesboro, Ga.

SUPERVISION

Rosenwald Student; Rosenwald Club, 4.

BILL ADAMS

EMILY AKINS

BLANCHE ANDERSON

MARY EDITH ANDREWS

GERALD BACON

EVELYN BAGGETT

MAMIE BAKER

J. A. BOATRIGHT





MARY EDITH ANDREWS

Carnegie, Ga.

SCIENCE

"X" Club; President "X" Club, +; Vesper Choir, 3, +; Vice-President House Council, +; Y. W. C. A., 3, +; Y. W. C. A. Cabinet, +; Band, +; Transfer, Andrew College.

GERALD CARTER BACON

Pembroke, Ga.

SOCIAL SCIENCE

Industrial Arts Club, 3, +; I. R. C., 3, +.

EVELYN FAYE BAGGETT

Dublin, Ga.

SUPERVISION

Rosenwald Student; Rosenwald Club, +; I. R. C., +; Secretary-Treasurer Glee Club, +; Dramatic Club, +; Transfer, University of Georgia.

MAMIE BAKER

Norman Park, Ga.

ELEMENTARY EDUCATION

Y. W. C. A., 2, 3, +; Vesper Choir, 3, +; Music Club, 2, +; Glee Club, 3, +; Transfer, G. S. C. W.

JOSEPH AARON BOATRIGHT

Hazlehurst, Ga.

SUPERVISION — SOCIAL SCIENCE

Rosenwald Student; Rosenwald Club, +; Forensic Council, +; English Club, +; I. R. C., +.



## GRADUATING CLASS



### JOHN WYATT BONNER

Gray, Ga.

#### HISTORY

Y. M. C. A., 3, 4; Y. M. C. A. Cabinet, 4; *George-Anne* Staff, 3, 4; Business Manager *George-Anne*, 4; I. R. C., 3, 4; English Club, 4; Treasurer English Club, 4; James Allen Bunce Cup, 3; Transfer, Middle Georgia College.

### SUSAN ANN BRASWELL

Stilson, Ga.

#### GENERAL SCIENCE

Y. W. C. A., 1, 2, 3, 4; W. A. A., 2, 3, 4; House Council, 3; Basketball, 1, 2, 3, 4; Volleyball, 1, 2, 3, 4; Baseball, 1, 2, 3, 4; Tennis, 1, 2, 3, 4; Bird Club, 4; Photography Seminar, 3.

### RUBY BRAZIEL

Pitts, Ga.

#### SUPERVISION

Rosenwald Student; Rosenwald Club, 4; I. R. C., 4; Glee Club, 4; Transfer, Andrew.

WYATT BONNER

SUSAN ANN BRASWELL

RUBY BRAZIEL

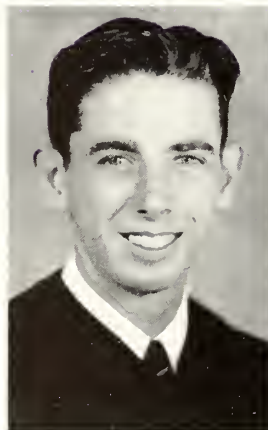
CLARA BREWTON

CHARLIE BROWN

LUCY BUNCE

ELIZABETH BURNS

MARION CARPENTER



## CLARA ELIZABETH BREWTON

Groveland, Ga.

### HOME ECONOMICS

Home Economics Club, 2, 3, 4; Secretary Home Economics Club, 4; Y. W. C. A., 1, 2, 3, 4; President Brown Cottage, 4; French Club, 1.

## LUCY BUNCE

Statesboro, Ga.

### GENERAL SCIENCE

"X" Club; Secretary "X" Club, 2; Freshman Commission; I. R. C., 2, 3, 4; Bird Club, 4; Executive Committee of Bird Club, 4; Photography Seminar, 3; Honors Day, 2, 3.

## CHARLIE HENRY BROWNE

Brunswick, Ga.

### HISTORY

Iota Pi Mu; Football, 4; *George-Anne* Staff, 4; Transfer, University of Chattanooga.

## ELIZABETH BURNS

Eastman, Ga.

### SUPERVISION

Rosenwald Student; Rosenwald Club, 4; Y. W. C. A., 1, 2; W. A. A. Council, 2; Honor Student, 2; Dramatic Club, 1, 2.

## MARION CARPENTER

Statesboro, Ga.

### MUSIC

Iota Pi Nu; Band, 1, 2, 3, 4; Assistant Band Director, 1, 2; President of Band, 3; Symphony Orchestra, 1, 2, 3; Director Symphony Orchestra, 2; Vice-President Music Club, 3; President Music Club, 4; Dance Orchestra, 1, 2, 3; Leader Dance Orchestra, 4.





## GRADUATING CLASS



### JULIA SEWELL CARROLL

Atlanta, Ga.

#### ENGLISH

Y. W. C. A. Cabinet, 3, 4; English Club, 4;  
President Juliette Lowe House Council, 4;  
Transfer, North Georgia College.

### AUGUSTIN STURGID CARSWELL

Blakely, Ga.

#### GENERAL SCIENCE

Bugger-Dagger; Football, 4; Basketball, 4;  
House Council, 4; Transfer, Georgia South-  
western.

### WILLARD WINFIELD CLANTON

Ellabell, Ga.

#### FRENCH

Iota Pi Nu; Bachelors Club; Secretary Iota  
Pi Nu, 4; Dramatic Club, 1, 2, 3; Vice-  
President Dramatic Club, 3; Theater Board,  
The Masquers, 4; REFLECTOR Staff; Chorus,  
3; Honors Day Student, 1, 2; Honored for  
Work in Dramatics, 1, 2; Y. M. C. A.  
Cabinet, 4.

JULIA CARROLL

A. S. CARSWELL

WILLARD CLANTON

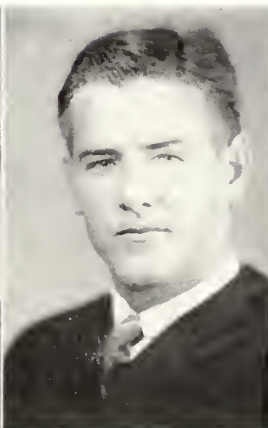
JULIAN COLLUM

ALLENE CON

FRANCES COUEY

B. R. B. DAVIS

MRS. R. O. DeLOACHE



JULIAN POLK COLLUM

Springfield, Ga.

BIOLOGY

A.B. Degree from Emory University, '38.

SARA FRANCES COUEY

Perry, Ga.

SUPERVISION

Rosenwald Student; Rosenwald Club, 3, 4;  
I. R. C., 3, 4.

DOROTHY ALLENE CON

Mt. Vernon, Ga.

ELEMENTARY EDUCATION

Vesper Choir, 3, 4; Transfer, Brewton-Parker.

BUREN RODDEN BAREFIELD DAVIS

Colquitt, Ga.

INDUSTRIAL ARTS

Bugger-Dagger; President Bugger-Dagger, 4;  
Industrial Arts Club, 4; College Barber, 4;  
Owner of "Jitterbug."

MRS. R. O. DELOACHE

Glennville, Ga.

SUPERVISION

Rosenwald Student; Rosenwald Club, 4; I.  
R. C., 4; Transfer, G. S. W. C.



# GRADUATING CLASS



## LOUISE ENGLISH

Thomaston, Ga.

### SUPERVISION

Rosenwald Student; Rosenwald Club, 3, 4;  
Glee Club, 3, 4; Women's Octette, 3; Music  
Club, 3, 4; Editor REFLECTOR; Transfer,  
Bessie Tift.

## CHARLES ALEXANDER ESTES

Gay, Ga.

### SOCIAL SCIENCE

## CHARLES TAUNTON ESTES

Union City, Ga.

### INDUSTRIAL ARTS

Industrial Arts Club, 4; Football, 2, 3, 4;  
Boxing, 2, 3; Transfer, Georgia Tech.

LOUISE ENGLISH

CHARLES A. ESTES

CHARLES T. ESTES

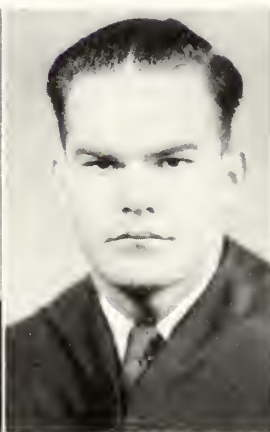
JOE C. EUBANKS

J. L. FAIRCLOTH

ARTHUR FARRAR

MRS. BERNICE FLOYD

MILDRED FRAZIER





JOE C. EUBANKS

Chauncey, Ga.

SUPERVISION

Rosenwald Student; Rosenwald Club, 4.

ARTHUR CURTIS FARRAR

Wadley, Ga.

SUPERVISION — SOCIAL SCIENCE

Rosenwald Student; Rosenwald Club, 4; I.  
R. C., 4; Bugger-Dagger, 4; Forensic Council, 4.

JAMES LOYCE FAIRCLOTH

Seville, Ga.

SUPERVISION

Rosenwald Student; Rosenwald Club, 3, 4;  
Industrial Arts Club, 3, 4; Dramatic Club,  
3, 4; Bachelors Club, 3, 4; Transfer, Middle  
Georgia College.

MRS. BERNICE D. FLOYD

Homerville, Ga.

SUPERVISION

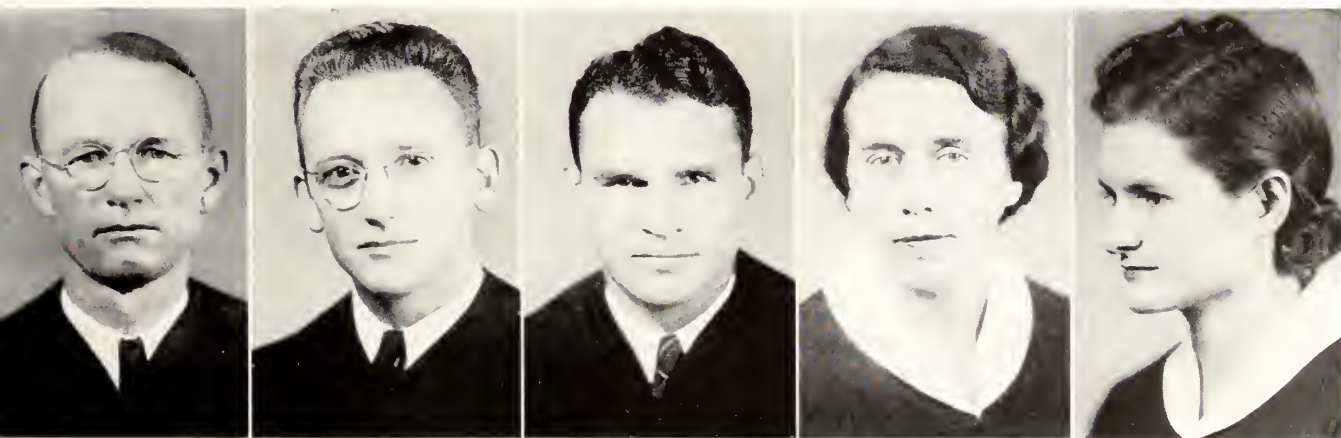
Rosenwald Student; Rosenwald Club, 4;  
Transfer, G. S. C. W.

MARTHA MILDRED FRAZIER

Gibson, Ga.

ENGLISH

Home Economics Club, 2; Glee Club, 4;  
Vesper Choir, 4.



## GRADUATING CLASS



### JOHN OLIVER FUSSELL

Dawson, Ga.

#### INDUSTRIAL ARTS

Bachelors Club, 1, 2, 3, 4; Industrial Arts Club, 3, 4; House Council, 4.

### MARY LOUISE GEER

Douglasville, Ga.

#### SUPERVISION

Rosenwald Student; Rosenwald Club, 4; I. R. C., 4; Transfer, University of Georgia Evening School.

### WILLIAM GERKEN

Savannah, Ga.

#### INDUSTRIAL ARTS

Bachelors Club, 3, 4; Industrial Arts Club, 2, 3, 4; *George-Anne* Staff, 2, 3; Business Manager REFLECTOR Staff, 4; Y. M. C. A., 2, 3.

OLIVER FUSSELL

LOUISE GEER

WILLIAM GERKEN

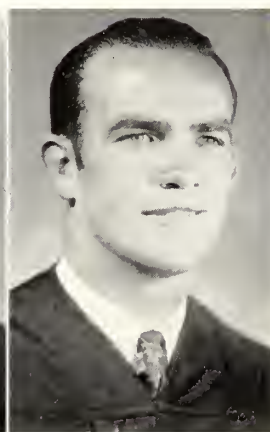
FANNIE LAUPA HAPRELL

THELMA HAPRISON

W. P. HERRING

HUGH HILL

OZZIE HINSON



FANNIE LAURA HARRELL

Eastman, Ga.

SUPERVISION

Rosenwald Student; Rosenwald Club, 4;  
Secretary Rosenwald Club, 4; Glee Club, 4;  
Transfer, G. S. C. W.

THELMA LAVERNE HARRISON

Halcyon Dale, Ga.

ELEMENTARY EDUCATION

D. L. D.; Pan-Hellenic Council, 3, 4; Secretary Pan-Hellenic Council, 4; Glee Club, 1, 2, 3; Band, 1, 2, 3; Dramatic Club, 1, 2, 3; Secretary Dramatic Club, 2; Vesper Choir, 1, 2, 3; Y. W. C. A., 1, 2, 3, 4; Secretary and Vice-President D. L. D., 2; President D. L. D., 4.

WILLIAM P. HERRING

Lake Park, Ga.

SUPERVISION — INDUSTRIAL ARTS

Rosenwald Student; Rosenwald Club, 4;  
House Council, 4; Transfer, Georgia Southwestern College.

HUGH ROBINSON HILL

Alamo, Ga.

ENGLISH

Y. M. C. A. Cabinet, 3; Football, 3; Transfer, A. B. A. C., Tifton.

OSWALD HINSON

Claxton, Ga.

GENERAL SCIENCE





# GRADUATING CLASS



## THAD W. HOLLINGSWORTH

Hatley, Ga.

### SUPERVISION

Rosenwald Student; Rosenwald Club, 3, 4; Vice-President Rosenwald Club, 3; President Rosenwald Club, 4; Glee Club, 3, 4; President Glee Club, 4; Music Club, 3; Dramatic Club, 3, 4; Vesper Choir, 3; Transfer, Georgia Southwestern.

## LONNIE HOLLOWAY

Graymont, Ga.

### INDUSTRIAL ARTS

## HOMER FRANKLIN HOOK

Statesboro, Ga.

### INDUSTRIAL ARTS

Iota Pi Nu; Treasurer Iota Pi Nu, 4; Industrial Arts Club, 3, 4; I. R. C., 3.

THAD HOLLINGSWORTH

LONNIE HOLLOWAY

FRANK HOOK

JAMES HUSSEY

BYRD IVESTER

BEN JONES

LUCY JONES

RALPH KEMP



JAMES HUSSEY

Statesboro, Ga.

ENGLISH

Dramatic Club, 1, 2, 3, 4; Stephens Literary Society, 1; Stephens-Oglethorpe Society, 2; English Club, 4.

BENJAMIN WILLIS JONES

Washington, Ga.

ENGLISH

Dramatic Club, 1, 2, 3, 4; Honors Day, 2; I. R. C., 4; English Club, 4; REFLECTOR Staff, 3, 4.

V. BYRD IVESTER

Clarkesville, Ga.

SUPERVISION

Rosenwald Student; Rosenwald Club, 3, 4; Treasurer Rosenwald Club, 3, 4; I. R. C., 3.

LUCY V. JONES

Vidalia, Ga.

SUPERVISION

Rosenwald Student; Rosenwald Club, 4; I. R. C., 4; House Council, 4; Transfer, G. S. T. C.

JULIUS RALPH KEMP

Statesboro, Ga.

PHYSICAL SCIENCE

Band, 1, 2, 3, 4; Symphony Orchestra, 1, 2, 3, 4; Glee Club, 2, 3, 4.



## GRADUATING CLASS



### WILLIAM KING

Forsyth, Ga.

#### SUPERVISION

Rosenwald Student; Rosenwald Club, +; I. R. C., +; English Club, +; Glee Club, +; Y. M. C. A., +; Transfer, Gordon Military College.

### EARLE LEE

Statesboro, Ga.

#### SUPERVISION

Rosenwald Student; Rosenwald Club, +; I. R. C., +.

### ROY F. McAFEE

Wrightsville, Ga.

#### SUPERVISION

Rosenwald Student; Rosenwald Club, +; Parliamentary Rosenwald Club, +; Transfer, Berry College.

WILLIAM KING

EARLE LEE

ROY McAFEE

ETHEL McCORMICK

GEORGE McINTYRE

ALVIN McLENDON

BARTOW MILLER

ELOISE MINCEY





ETHEL McCORMICK

Brooklet, Ga.

SUPERVISION

Rosenwald Student; Rosenwald Club, 4.

ALVIN L. McLENDON, JR.

Dawson, Ga.

SCIENCE

Vesper Choir, 3, 4; Glee Club, 4; Y. M. C. A., 3, 4; Transfer, Georgia Southwestern College.

GEORGE McINTYRE

Ailey, Ga.

INDUSTRIAL ARTS

Band, 3; Y. M. C. A., 3; Industrial Arts Club, 4; Transfer, Brewton-Parker Junior College.

BENJAMIN BARTOW MILLER

Cusseta, Ga.

INDUSTRIAL ARTS

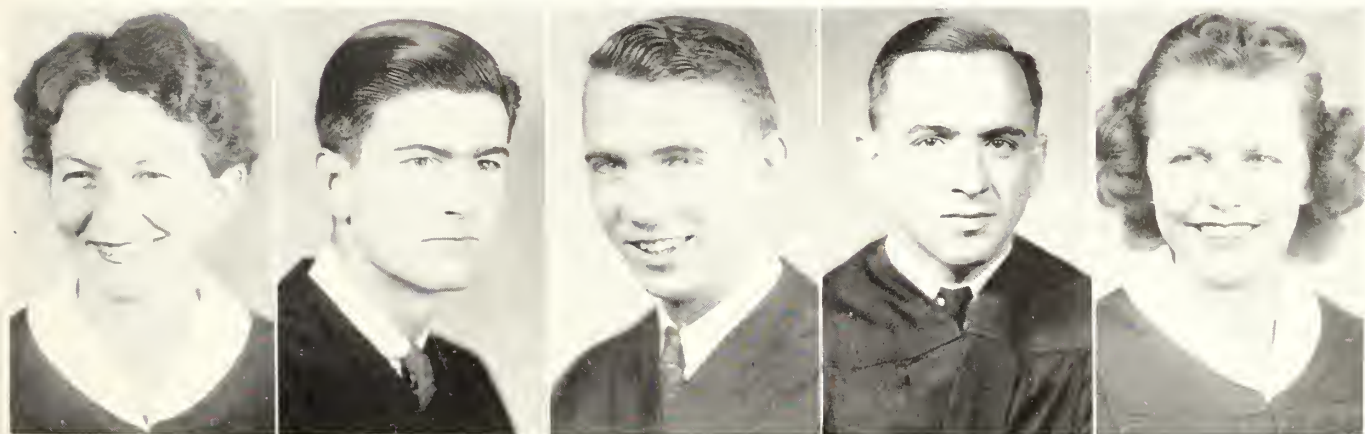
Iota Pi Nu; Bachelors Club; Football, 2, 3, 4; Basketball, 1, 2, 3, 4; House Council, 4.

ELOISE MINCEY

Ogeechee, Ga.

ENGLISH

Epicurean; Freshman Commission; Vice-President Epicurean, 2; Secretary Epicurean, 3; President Epicurean, 4; Y. W. C. A., 1, 2, 3; Secretary Pan-Hellenic Council, 3; President Pan-Hellenic Council, 4; Vice-President Junior Class; Glee Club, 3; May Court, 2, 3; *George-Anne* Staff, 3, 4; Boxing Sponsor, 3; W. A. A. Council, 4; Delta Sigma Sponsor, 4; Beauty Section, 4; English Club, 4; REFLECTOR Staff.



## GRADUATING CLASS



### CAROLYN OLIVER

Savannah, Ga.

#### ENGLISH

Plays "It Can Happen," "Tomorrow and Tomorrow," "The Late Christopher Bean," Theater Board, 4; Dramatic Club Certificate; English Club, 4; Transfer, Armstrong.

### BRANTLEY O'QUINN

Winokur, Ga.

#### SOCIAL SCIENCE

### CORA OLIVER PAGE

Fairmont, N. C.

#### INDUSTRIAL ARTS

Band, 1, 2, 3, 4; Orchestra, 1, 2, 3, 4; Y. W. C. A., 2, 3; Home Economics Club, 2, 3, 4; House Council, 2, 3, 4.

CAROLYN OLIVER

BRANTLEY O'QUINN

CORA PAGE

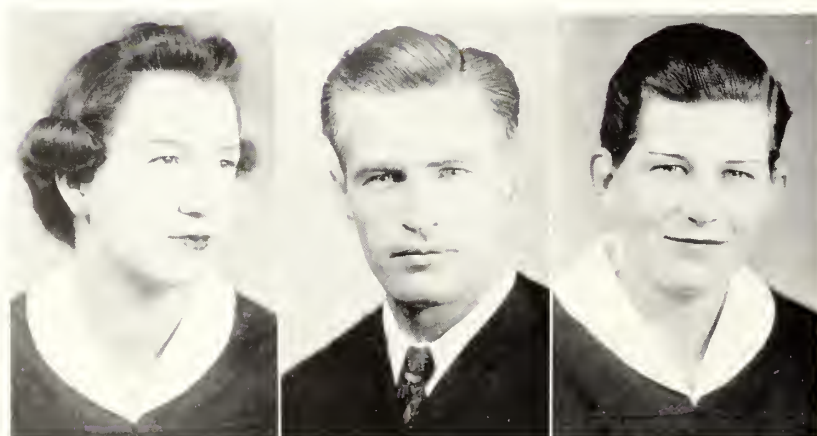
CHARLIE PAINE

CATHERINE PARRISH

GRAYDON PIERCE

DAVID PROCTOR

JESSE RUTLAND



CHARLES JOSHUA PAINE

Waycross, Ga.

SOCIAL SCIENCE

Delta Sigma; Glee Club, 3; Vesper Choir, 4; House Council, 4; I. R. C., 4; Forensic Council, 4; Vice-President Delta Sigma, 4; REFLECTOR Staff, 4; Football, 3; Track, 3, 4; English Club, 4; Prosecuting Attorney, Rat Court, 4; "T" Club, 3; Transfer, University of Georgia.

JOSIE CATHERINE PARRISH

Portal, Ga.

FRENCH

Home Economics Club, 4; English Club, 4; *George-Anne* Staff, 3.

GRAYDON PIERCE

Rocky Ford, Ga.

INDUSTRIAL ARTS

Bachelors Club; Secretary - Treasurer Industrial Arts Club, 4; House Council, 4; Royal Order of Bushwhackers, 3.

DAVID MCGHEE PROCTOR

Woodbine, Ga.

GENERAL SCIENCE

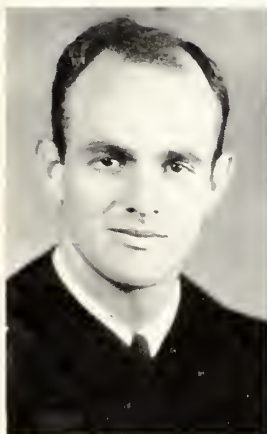
Iota Pi Nu; Chaplain Iota Pi Nu, 4; Bachelors Club, 2, 3, 4; Treasurer Bachelors Club, 3; Vice-President Freshman Class; President Sophomore Class; President Junior Class; Student Council, 2, 3, 4; President Student Council, 4; Y. M. C. A., 1, 2, 3, 4; Y. M. C. A. Cabinet, 2, 3, 4; President Men's Chorus, 3; Glee Club, 2, 3; Administrative Council, 3, 4; House Council, 3.

JESSE EUGENE RUTLAND

Lenox, Ga.

SUPERVISION — SOCIAL SCIENCE

Rosenwald Student; Rosenwald Club, 4; I. R. C., 4; Transfer, Georgia State College for Men at Tifton.





# GRADUATING CLASS



## SARA VIRGINIA SANDS

Daisy, Ga.

### ELEMENTARY EDUCATION

Dux Domina; Vice-President Dux Domina, 4; Y. W. C. A., 1, 2, 3, 4; Y. W. C. A. Cabinet, 2, 3, 4; House Council, 3, 4; Vice-President House Council, 4; Pan-Hellenic Council, 4; W. A. A., 3.

## RUBY SEWELL

Marietta, Ga.

### SUPERVISION

Rosenwald Student; Rosenwald Club, 3, 4; Social Chairman, Rosenwald Club, 3; Chairman of Publications, Rosenwald Club, 4; Vesper Choir, 3, 4; Y. W. C. A. Cabinet, 4; Glee Club, 3, 4; I. R. C., 3, 4; Transfer, G. S. C. W.

## JAMES SHARPE

Savannah, Ga.

### ENGLISH

English Club, 4; President English Club, 4; REFLECTOR Staff; Transfer, Brewton-Parker.

VIRGINIA SANDS

RUBY SEWELL

JAMES SHARPE

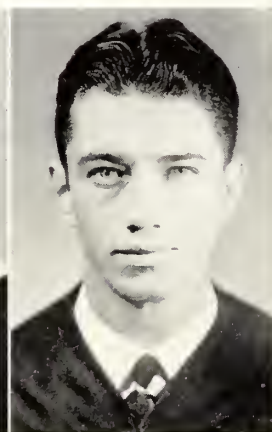
C. D. SHELEY

ETHEL SIGMAN

Z. L. STRANGE, SR.

THOMAS SWIFT

CECILENE SWINSON



C. D. SHELEY

Halcyon Dale, Ga.

HISTORY

Bachelors Club; Y. M. C. A., 1, 2, 3, 4; Y. M. C. A. Cabinet, 3, 4; I. R. C., 2, 3, 4; *George-Anne* Staff, 2, 3, 4; Associate Editor *George-Anne*, 3; Editor *George-Anne*, 4; REFLECTOR Staff, 4.

ETHEL LOTT SIGMAN

Augusta, Ga.

SUPERVISION

Rosenwald Student; Rosenwald Club, 4; English Club, 4; I. R. C., 4; Transfer, Winthrop.

Z. L. STRANGE, SR.

Statesboro, Ga.

ENGLISH

Collegeboro Postmaster.

THOMAS SWIFT

Woodbine, Ga.

INDUSTRIAL ARTS

Glee Club, 2, 3, 4; Vesper Choir, 2, 3, 4; Industrial Arts Club, 2, 3, 4; Transfer, South Georgia College.

CECILENE SWINSON

Statesboro, Ga.

ELEMENTARY EDUCATION

"X" Club; Treasurer "X" Club, 4; Honors Day, 1, 2, 3; Home Economics Club, 2; W. A. A. Council, 3, 4; I. R. C., 2, 3, 4; President I. R. C., 4; Band, 3, 4.



# GRADUATING CLASS



## JUANITA CARTER THOMAS

Scott, Ga.

### HISTORY

"X" Club; I. R. C., 2, 3, 4; Honor Student, 2, 3; President West Hall, 3; Vice-President Student Council, 4; Administrative Council, 3, 4.

## MIRIAN ELLIOTT TOWNSEND

Climax, Ga.

### SUPERVISION

Rosenwald Student; Rosenwald Club, 3, 4; Glee Club, 3, 4; Dramatics Club, 3, 4; I. R. C., 3, 4; Vesper Choir, 3.

## DANIEL VICKERS

Douglas, Ga.

### SOCIAL SCIENCE

JUANITA THOMAS

MIRIAN TOWNSEND

DANIEL VICKERS

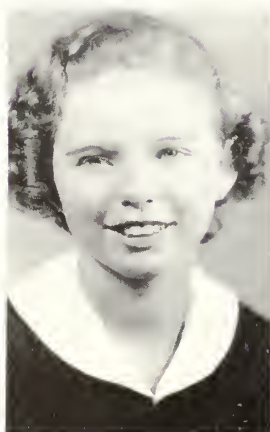
WILLIAM WARE

POLAND WARNOCK

MARTHA WATSON

MARY WEBB

LAMAR WIGGINS





WILLIAM SANDFORD WARE

Benevolence, Ga.

SOCIAL SCIENCE

Iota Pi Nu; Vice-President Iota Pi Nu, 4;  
Honors Day, 1; Y. M. C. A., 1, 2, 3; Glee  
Club, 1, 2; Bachelors Club.

SARAH MARTHA WATSON

Fitzgerald, Ga.

SUPERVISION

Rosenwald Student; Rosenwald Club, 4; Vice-  
President Rosenwald Club, 4; Transfer, Uni-  
versity of Georgia.

MARY FRANCES WEBB

Douglasville, Ga.

SUPERVISION

Rosenwald Student; Rosenwald Club, 3, 4;  
Vesper Choir, 3; I. R. C., 3, 4; Glee Club,  
4; Historian Rosenwald Club, 4; Transfer,  
University of Georgia.

ROLAND DANIEL WARNOCK

Statesboro, Ga.

INDUSTRIAL ARTS

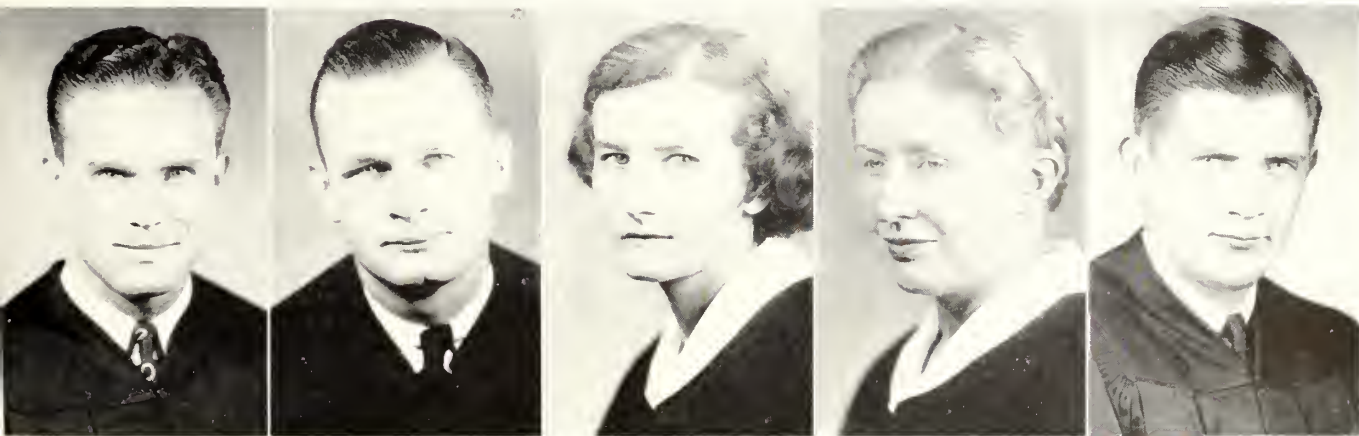
Industrial Arts Club, 3, 4.

LONNIE LAMAR WIGGINS

Eastman, Ga.

SUPERVISION — SOCIAL SCIENCE

Rosenwald Student; Rosenwald Club, 3, 4;  
Bachelors Club; I. R. C., 3, 4; Industrial Arts  
Club, 4.



## GRADUATING CLASS



### SAMUEL PAUL WIGGINS

Statesboro, Ga.

#### SOCIAL SCIENCE

Vesper Choir, 3; Dance Orchestra, 3; Vice-President Band, 3; Vice-President Glee Club, 3; Symphony Orchestra, 3; Transfer, Millsaps.

### MORGAN EDISON WILCOX

Wray, Ga.

#### INDUSTRIAL ARTS

Glee Club, 3; Industrial Arts Club, 3, 4; Vesper Choir, 3, 4; Forensic Council, 4; Transfer, South Georgia College.

### WILEY JULIAN WOODARD

Douglas, Ga.

#### SOCIAL SCIENCE

Bachelors Club; I. R. C., 4; Football, 3, 4; Royal Order of Bushwhackers, 3; Transfer, South Georgia College.

SAMUEL WIGGINS

EDISON WILCOX

WILEY WOODARD





## 5. *Application-Alumni*

---





Mr. Leonard Kent, Business Education Instructor . . . Miss Frances Knowlton,  
Home Economics Instructor . . . Miss Queen Elizabeth Collins, Secretary to  
Director of Laboratory Schools . . . Mr. Paul Thompson, Exact Science Instructor  
. . . Mr. Howell Martin, Manager of "Little Store" . . . Miss Hassie Maude  
McElveen, Assistant Librarian . . . Miss Zulieme Lane, Assistant Librarian.



Miss Elizabeth Edenfield, Assistant Dean of Women . . . Mr. Roy Rabun, Assistant Bursar . . . Mrs. Iris Roberts McCormack, Critic Teacher in Laboratory School . . . Mr. Jim Wrinkle, Health and Physical Education Instructor . . . Miss Sophie Johnson, Dean of Men . . . Mr. George Donaldson, Principal Denmark Laboratory School.





SUPERVISED

*Non-Social Clubs*





# STUDY

---

*Other Organizations*

# INDUSTRIAL ARTS CLUB

## OFFICERS

EDISON WILCOX . . . . .	<i>President</i>
BILL ADAMS . . . . .	<i>Vice-President</i>
ROLAND WARNOCK . . . . .	<i>Secretary-Treasurer</i>
MR. BING	} . . . . . <i>Sponsors</i>
MR. HOSTETLER	
MR. LIVINGSTON	

## MEMBERS

JAMES ALDRED  
ROBERT CARROLL  
B. R. B. DAVIS  
CHARLES T. ESTES  
J. L. FAIRCLOTH  
OLIVER FUSSELL

WILLIAM GERKEN  
W. P. HERRING  
FRANK HOOKS  
GEORGE MCINTYRE  
GRAYDON PIERCE  
TOM SWIFT

EARNEST TROWELL





## INTERNATIONAL RELATIONS CLUB

### OFFICERS

CECILENE SWINSON . . . . . *President*  
 ARTHUR FARRAR . . . . . *Vice-President*  
 MIRIAM GIRARDEAU . . . . . *Secretary-Treasurer*  
 DR. C. M. DESTLER . . . . . *Sponsor*

THE INTERNATIONAL RELATIONS CLUB was established in the fall of 1934. Its purpose is to cultivate intelligent interest in world affairs. It is affiliated with the Carnegie Endowment for International Peace.

### MEMBERS

EVELYN BAGGETT  
 WYATT BONNER  
 TED BOOKER  
 LORRAINE BROCKETT  
 IRA LOIS BROWN  
 ISAAC BUNCE  
 LUCY BUNCE  
 FRANCES COUEY  
 THOMAS COX

FRANCES DEAL  
 MRS. R. O. DELOACHE  
 KATHRYN DUBBERLY  
 MILTON FINDLEY  
 J. A. GARDNER  
 LOUISE GEER  
 BEN JONES  
 LUCY JONES

JOE JOYNER  
 WILLIAM KING  
 EARLE LEE  
 JIM MOORE  
 CHARLIE PAINE  
 MILDRED PITTMAN  
 JESSE RUTLAND  
 ELBERT SANDERS  
 LOY SCOTT





## THE ROSENWALD CLUB

THE ROSENWALD CLUB was organized in the fall of 1937. The present group consists of twenty-nine teachers chosen to study elementary supervision. They were selected by a committee of the college faculty.

### OFFICERS

TILAD HOLLINGSWORTH . . . . . *President*  
 MARTHA WATSON . . . . . *Vice-President*  
 FANNIE LAURA HARRELL . . . . . *Secretary*  
 BYRD IVESTER . . . . . *Treasurer*  
 MARY WEBB . . . . . *Historian*

### *Faculty Sponsors*

MISS KATE HOUX      MISS JANE FRANSETH  
 MR. GEORGE W. DONALDSON

### MEMBERS

BLANCHE ANDERSON	W. P. HERRING
EVELYN BAGGETT	TILAD HOLLINGSWORTH
J. A. BOATRIGHT	BYRD IVESTER
RUBY BRAZIEL	LUCY JONES
ELIZABETH BURNS	WILLIAM KING
FRANCES COUEY	EARLE LEE
MRS. R. O. DELOACH	ROY McAFEE
LOUISE ENGLISH	ETHEL McCORMICK
JOE EUBANKS	JESSE RUTLAND
J. L. FAIRCLOTH	RUBY SEWELL
ARTHUR FARRAR	MRS. ETHEL LOIT SIGMAN
MRS. BERNICE FLOYD	MIRIAN TOWNSEND
LOUISE GEER	MARTHA WATSON
FANNIE LAURA HARRELL	MARY WEBB
	LAMAR WIGGINS



LEFT TO RIGHT: Donaldson, Franseth, Hollingsworth, Watson, Anderson, Harrell, McAfee, Sewell, Houx, Ivester, Webb.



LEFT TO RIGHT: Floyd, Geer, Farrar, McCormack, Jones, Braziel, Eubanks, Sigman, Coucy, Townsend, King.



LEFT TO RIGHT: King, Rutland, Faircloth, Lee, Boatright, English, DeLoache, Burns.



## THE MASQUERS THEATRE BOARD



### OFFICERS

EDDIE NAJJAR . . . . .	<i>Managing Director</i>
MISS LILLIAN HOGARTH . . . . .	<i>Technician</i>
WILLARD CLANTON . . . . .	<i>Business Manager</i>
ESSIE LANGFORD . . . . .	<i>Publicity</i>
DORIS WALLACE . . . . .	<i>Properties</i>
CAROLYN OLIVER . . . . .	<i>Casting Director</i>

### "THE PATSY"

By BARRY CONNERS

#### CAST

BERNICE GRIFFIN  
J. L. FAIRCLOTH  
FRANCES NIPPER

JUNE CARPENTER  
FRANK FRAZER  
FLOYD WATKINS

WILLARD CLANTON  
SARA GODBEE  
JAMES HUSSEY







#### MEMBERS

KATHRYN DUBBERLY  
 DOROTHY DURDEN  
 LETA GAY  
 ALICE VIRGINIA HURST  
 ANN POWELL  
 MARY POWELL  
 KATHLEEN FERGUSON  
 SARAH MORRIS  
 EULA BETH JONES  
 JENNY BROWN  
 ANN SLADE  
 MILEOLA SMITH  
 MARJORIE FOREHAND  
 MARGARET ANN JOHNSTON  
 ALICE HILL  
 KATHRYN GAINLY  
 ALICE JOE LANE  
 MONTENE CASON  
 GERALDINE KEEFI  
 EDNA NEVILLE  
 JO SIMMONS  
 MARION LANIER  
 EDNA KENT

### HOME ECONOMICS CLUB

#### OFFICERS

ANN BREEN . . . . .	<i>President</i>
REBA YARBROUGH . . . . .	<i>Vice-President</i>
CLARA BREWTON . . . . .	<i>Secretary</i>
SUE SHIVERS . . . . .	<i>Treasurer</i>

### FORENSIC COUNCIL

#### OFFICERS

TED BOOKER . . . . .	<i>President</i>
FLOYD WATKINS . . . . .	<i>Vice-President</i>
GESMAN NEVILLE . . . . .	<i>Secretary</i>
MR. OWINGS and MR. FLORA . . . . .	<i>Faculty Sponsors</i>

#### MEMBERS

IRA BELL  
 JOHN CROMLEY  
 CHARLES PAINE  
 J. A. BOATRIGHT  
 TOM DEWS  
 ARTHUR FARRAR  
 BRANTLEY JOHNSON  
 BEN TILMAN  
 CLYDE ANDERSON  
 FLOYD WARDLOW  
 PIERRE HARPER  
 EARNEST THOMPSON  
 ED ALLEN





## ENGLISH CLUB

### OFFICERS

JAMES SHARPE	President
MIRIAM GIRARDEAU	Vice-President
JOUETT DAVENPORT	Secretary
WYATT BONNER	Treasurer
MRS. GUARDIA	Sponsor

### MEMBERS

DOROTHY BERRY  
J. A. BOATRIGHT  
LORRAINE BROCKETT  
IRA LOIS BROWN  
WINONA CARPENTER  
JULIA CARROLL  
KATHRYN DUBBERLY  
ANNE FELTON

MILDRED FRAZIER  
MARY EDNA GUNTER  
JAMES B. HUSSEY  
LAURA HODGES  
BEN JONES  
WILLIAM KING  
L. C. LEE  
ELIZABETH MILLER

ELOISE MINCEY  
CAROLYN OLIVER  
JANE POOL  
MERLE ANNE POWELL  
ANNA ROGERS  
ETHEL L. SIGMAN  
SALLIE SMITH



## MUSIC CLUB

### OFFICERS

TED BOOKER . . . . .	<i>President</i>
CORA LEE BRUNSON . . . . .	<i>Vice-President</i>
MARGARET ANN JOHNSTON . . . . .	<i>Secretary</i>
JUNE CARPENTER . . . . .	<i>Treasurer</i>

### MEMBERS

MRS. BARNES	FLOYD HUMPHIREYS
ELLIOTT BOSWELL	EULA BETH JONES
RUTH CONE	EVE KING
JOUETT DAVENPORT	HORACE McDOUGALD
LOUISE ENGLISH	BETTY McLEMORE
CATHERINE GAINEY	MR. NEIL
MILBURN GLENN	DRU RAMBO
MR. HARRIS	BETTY SMITH
FRANCES HARRISON	NELL STARKEY
FRANCES HUGHES	ISABELLE TRUSSELL

BILLY WINGATE





# SYMPHONY ORCHESTRA

## OFFICERS

GESMON NEVILLE . . . . .	<i>President</i>
TED BOOKER . . . . .	<i>Vice-President</i>
CARLTON CARRUTH . . . . .	<i>Secretary</i>
CORA PAGE . . . . .	<i>Treasurer</i>

## MEMBERS

RALPH KEMP	HAYGOOD MORRISON
CORA PAGE	CARLTON CARRUTH
INOGENE AUTRY	EDWARD CARRUTH
MARCIA MCNEELY	TED BOOKER
BILLIE TURNER	GEORGE BING
MARTHA SUE BENNETT	CHARLES JEREMIAS
BRUCE CARRUTH	MARTHA DANIEL
MILBURN GLENN	IRBY MEADOWS
GESMON NEVILLE	JAMES MOORE

JULIAN HOLMES



## GLEE CLUB

### OFFICERS

THAD HOLLINGSWORTH . . . *President*  
 ELLIOTT BOSWELL . . . *Vice-President*  
 EVELYN BAGGETT . . . *Secretary-Treasurer*  
 MR. RONALD J. NEIL . . . *Director*



EVELYN BAGGETT  
 MAMIE BAKER  
 GRACE BOWEN  
 RUBY BRAZIEL  
 LUTIE BREWTON  
 IRA LOIS BROWN  
 DOROTHY CALDWELL

JANETTA CALDWELL  
 FRANCES DEAN  
 VIRGINIA EASON  
 MILDRED FRAZIER  
 GLADYS GNANN  
 FANNIE LAURA HARRELL  
 FRANCES HARRISON  
 FRANCES HUGHES

### SOPRANOS

MARGARET ANN JOHNSTON  
 EULA BETH JONES  
 GERALDINE KEEFE  
 EVELYN KING  
 JANICE KENMORE  
 ALICE JO LANE  
 MARION LANIER  
 BETTIE McLEMORE

NELL PITTMAN  
 JANE POOLE  
 ANNE POWELL  
 BEULAH ROGERS  
 RUBY SEWELL  
 MIRIAM TOWNSEND  
 MARY WEBB

JUNE CARPENTER  
 MONTINE CASON  
 DOROTHY DURDEN

LOUISE ENGLISH  
 ELIZABETH FORD  
 BURDELL HARRISON

### ALTOS

EDNA NEVILLE  
 MARY POWELL  
 OLIVE REPPARD

NELL STARKEY  
 MYRA TIPPINS

SHELDON CHAPMAN  
 PILCHER KEMP  
 RALPH KEMP

WILLIAM KING  
 CURTIS LANE  
 ALVIN McLENDON

### TENORS

DRU RAMBO  
 JOHN ROBERTS  
 ANNA ROGERS

BILL SARTAIN  
 FRANCIS TRAPNELL  
 BILL WINN

JOHN ALLEN  
 T. A. BACON  
 TED BOOKER

ELLIOTT BOSWELL  
 SAM BURGESS  
 CARLTON CARRUTH  
 EDWARD CARRUTH

### BASSES

WILLIAM CHAMBLESS  
 TOM DEWS  
 WALTER FLANDERS  
 FRANCIS GROOVER

THAD HOLLINGSWORTH  
 TOM JENKINS  
 TOM SCOTT



## THE BAND

### OFFICERS

BILL CHAMBLISS . . . . . *President*  
 IRBY MEADORS . . . . . *Vice-President*  
 DAVID BOWMAN . . . . . *Secretary*  
 CARLTON CARRUTH . . . . . *Treasurer*

### MEMBERS

CHESLEY WHITLEY	ROGER HOLLAND
DAVID BOWMAN	CECHLINE SWINSON
TED BOOKER	GESMAN NEVILLE
MARY EDITH ANDREWS	M. L. BRANNEN
MINEOLA SMITH	FLOYD HUMPHRIES
CORA PAGE	JELKS TAYLOR
HAYGOOD MORRISON	JOE STANFORD
MARTHA BENNETT	HUGH MAXWELL
RALPH KEMP	CAROL BEASLEY
EDWARD CARRUTH	HARRIS GIBBS
CARLTON CARRUTH	BEN IRWIN
IRBY MEADORS	TOM PATAT
CHESS FAIRCLOTH	CHARLES JEREMIAS
BILL CHAMBLISS	



MR. ERNEST E. HARRIS  
Director





## THE VESPER CHOIR

### OFFICERS

JANETTA CALDWELL . . . . .	<i>President</i>
DOROTHY CALDWELL . . . . .	<i>Vice-President</i>
KITTY DUBBERLY . . . . .	<i>Secretary-Treasurer</i>
TED BOOKER . . . . .	<i>Assistant Director</i>
MRS. Z. S. HENDERSON . . . . .	<i>Director</i>

### MEMBERS

MARY EDITH ANDREWS  
 MARJORIE BACON  
 DOROTHY BERRY  
 ELLIOTT POSWELL  
 HERMAN BRAY  
 LUTIE BREWTON  
 BILL CHAMBLESS  
 SHELDON CHAPMAN  
 HAZEL CLEVELAND  
 FREIDA DARSEY  
 EDITH DAVIS  
 INMAN DAVIS  
 FRANCES DEAL  
 TOM DEWS  
 LOUISE ELKINS  
 MILDRED FRAZIER  
 MILBURN GLENN  
 GLADYS GNANN  
 FAY HALL  
 BURDELL HARRISON  
 LORENE HEIDT

LAURA HODGES  
 NEIL HODGES  
 FRANCES HUGHES  
 THOMAS JENKINS  
 EULA BETH JONES  
 EVE KING  
 MARGUERITE MCCARTHY  
 MARY MCCARTY  
 GENEVA MCDANIEL  
 MARGARET MCDANIEL  
 ALVIN MCLENDON  
 CHARLIE PAINE  
 JOHN ROBERTS  
 TOM SCOTT  
 REBECCA SHEAROUSE  
 SYBIL SHEPARD  
 SUE SHIVERS  
 ANN SLADE  
 JEAN VAN HORN  
 ROLAND WARNOCK  
 EDISON WILCOX



# The Y. M. C. A.

## OFFICERS

L. C. LEE . . . . . *President*  
TED BOOKER . . . . . *Vice-President*  
C. D. SHELEY . . . . . *Secretary-Treasurer*  
MR. PAUL THOMPSON . . . . . *Sponsor*

## CABINET MEMBERS

BILL CHAMBLESS . . . . . *Social Service*  
WYATT BONNER . . . . . *Social*  
D. R. BARBER . . . . . *Morning Watch*  
WILLARD CLANTON . . . . . *Vespers*  
DAVID PROCTOR . . . . . *Membership*



Sheley, Barber, Chambliss, Booker, Johnson, Lee, Bonner, Clanton, Proctor.

# The Y. W. C. A.

## OFFICERS

AGNES HODGES . . . . .	<i>President</i>
DOROTHY CROMLEY . . . . .	<i>Vice-President</i>
ANNE FELTON . . . . .	<i>Secretary</i>
VIRGINIA SANDS . . . . .	<i>Treasurer</i>

## CABINET MEMBERS

JEWELL VANDIVER . . . . .	<i>World Fellowship</i>
SARA MORRIS . . . . .	<i>Social Chairman</i>
EMOLYN RAINEY . . . . .	<i>Publicity Chairman</i>
MIRIAM GIRARDEAU } DOROTHY CALDWELL }	<i>Social Service</i>
PRISCILLA PRATHER } MARY EDITH ANDREWS }	<i>Freshman Commission</i>
KATHERINE DUBBERLY } REBA YARBROUGH } JULIA CARROLL }	<i>Morning Watch</i>
SEPHALEE HUTCHINSON . . . . .	<i>Pianist</i>
RUBY SEWELL . . . . .	<i>Experts</i>
MISS ELIZABETH EDENFIELDS . . . . .	<i>Sponsor</i>



FRONT ROW: Prather, Felton, Sewell, Hodges, Carroll, Hutchinson, Caldwell, Dubberly. BACK ROW: Andrews, Cromley, Sands, Rainey, Morris, Girardeau, Vandiver, Yarbrough.





SUPERVISED

*Athletics*



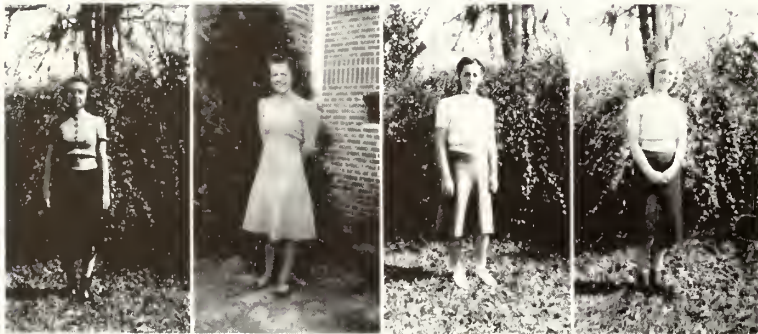
PLAY

*Social Clubs*



## W. A. A. COUNCIL

MISS SUSIE HAMMACK . . . . . *Sponsor*  
 PRISCILLA PRATHER . . . . . *President*  
 MRS. HONEYCUTT BOWEN . . . . . *Sponsor*



MIRIAM GIRARDEAU . . . . . *Secy.-Treas.*  
 ELOISE MINCEY . . . . . *Publicity Chairman*  
 EMOLYN RAINEY . . . . . *Poster Chairman*  
 MEG GUNTER . . . . . *Dancing*

KITTY GARDNER . . . . . *Tumbling*  
 FRANCES BREEN . . . . . *Speedball*  
 MARJORIE BOATRIGHT . . . . . *Baseball*



CATHERINE GAINES . . . . . *Swimming*  
 AGNES HODGES . . . . . *Tennis*  
 JEANETTA CALDWELL . . . . . *Basketball*  
 SUSAN ANN BRASWELL . . . . . *Volleyball*





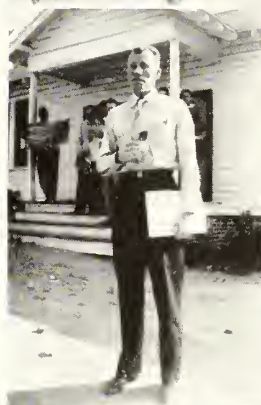
## FOOTBALL

WITH ONE OF ITS LIGHTEST SQUADS and with the reserve list the shortest that it has ever been, the Blue Tide waded through a season that, perhaps, was the toughest that it has ever played. However, heads-up playing and the handling of tricky plays with the sureness of complete mastery held the team in a favorable light when compared with teams that were classed far above it. Splendidly supported by the student body, the squad displayed as fine a fighting spirit as has ever been shown by a Teachers team.

B. L. SMITH  
Coach



JIM WRINKLE  
Assistant Coach



ROBERT MOYE  
Manager





# The TEACHERS *Charge* .

THE SPOTLIGHT OF THE SEASON was focused on the game with Erskine. Playing great ball against their traditional enemies, the Tide held their heavier foe to a tie in the most exciting game of the season.



Bob Bell, Gus Carswell, Haygood Morrison, Billy Winn, Charlie Smith, Orman Hamilton, Damon Webb,  
Billy Fordham, Jody Robertson, Jack Hogarth, Danny Vickers, Charlie Brown.





COPELAND OZIER  
TOM BRANTLEY  
CHARLES ESTES



HERSCHILL HAMIL  
ELI HILL  
HAROLD RIGSBY



HARRY WILSON  
BARTOW MILLER  
TOM VANDIVER



ROBERT MOSS  
JULIAN WOODARD  
HIRAM PATTERSON







COACH SMITH

# ON THE

THE PET SPORT of the campus brought forth some exceptionally likely material this year. The newcomers to the varsity displayed pep and ginger to Coach Smith's heart's content. Steadied by the men from last year, the team worked well and enjoyed an excellent season.

## RESULTS

Jan. 7—T. C. . . . 41—Douglas . . . . . 31
Jan. 12—T. C. . . . 34—J. E. A. . . . . 30
Jan. 14—T. C. . . . 25—Armstrong . . . . . 30
Jan. 21—T. C. . . . 37—M. G. C. . . . . 26
Jan. 23—T. C. . . . 53—Celtics . . . . . 50
Jan. 24—T. C. . . . 53—Celtics . . . . . 58
Jan. 26—T. C. . . . 32—Newberry . . . . . 44
Jan. 28—T. C. . . . 44—U. S. Marines . . . . 33
Feb. 2—T. C. . . . 36—M. G. C. . . . . 58
Feb. 3—T. C. . . . 61—Douglas . . . . . 47
Feb. 9—T. C. . . . 52—J. E. A. . . . . 49
Feb. 10—T. C. . . . 62—College of Charleston 36
Feb. 11—T. C. . . . 26—U. S. Marines . . . . 35
Feb. 15—T. C. . . . 27—Armstrong . . . . . 23
Feb. 18—T. C. . . . 52—Mercer . . . . . 58



CLYDE ANDERSON  
JIMMIE DeLOACH



LAURENCE ENLOW  
BILLY WINN



HENDRY BAGLEY  
BARTOW MILLER

# HARDWOOD

FRONT ROW: Bagley, Rape,  
Winn, Rigsby, Hamil, Carswell,  
Miller. BACK ROW: DeLoach,  
Ozier, Talbert, Bell, Smith, Enlow,  
Anderson, Clifton, Houston.



HARRIS RAPE  
COPE OZIER

HAROLD RIGSBY  
GUS CARSWELL

SPEC CLIFTON  
BOB BELL

BILLY TALBERT  
HAROLD HOUSTON

PECK HAMIL  
ROBERT MOYE  
Manager





In the Spring . . . You needn't wave good-bye . . . I'm going with you . . .  
 Takin' it easy at Pecan Villa . . . Strange frees the Freshmen . . . Mr. and Mrs.  
 is the name . . . The Shriners visit T. C. . . . 'Taint funny to Sis . . . Miss E.  
 observes . . . A new romance? . . . On the way to Denmark . . . Bushology? . . .  
 Why so dignified, Frank? . . . Judge Simpson.





*Supervised Play in the Social Groups*

---

## THE BACHELORS CLUB

HISTORY: Founded 1928

MOTTO: "*Beware of Women*"

COLORS: *Green and White* FLOWER: *Bachelor Button*

### OFFICERS

WILLARD CLANTON . . . . .	<i>President</i>
ELI HILL . . . . .	<i>Vice-President</i>
BOBBY CARROLL . . . . .	<i>Secretary</i>
OLIVER FUSSELL . . . . .	<i>Treasurer</i>
MISS RUTH BOLTON {	<i>Sponsors</i>
MISS MARIE WOOD }	

### MEMBERS

BILL ADAMS  
HENDRY BAGLEY  
GRADY EVERETT  
J. L. FAIRCLOTH  
WILLIAM GERKEN  
BILL McLEOD  
BARTOW MILLER  
COPELAND OZIER  
GRAYDON PIERCE

DAVID PROCTOR  
ROY RABUN  
HAROLD RIGSBY  
C. D. SHELEY  
TOM VANDIVER  
BILL WARE  
HARRY WILSON  
JULIAN WOODYARD  
JIM WRINKLE

HERNAN WRINKLE



# BUGGER-DAGGERS

## OFFICERS

B. R. B. DAVIS . . . . . *President*  
 CLIFFORD WELLS . . . . . *Vice-President*  
 EDWIN THOMAS . . . . . *Secretary*  
 NICHOLAS DUNBAR . . . . . *Treasurer*  
 LAMON WILLIAMS . . . . . *Sergeant-at-Arms*  
 GUS CARSWELL . . . . . *Chaplain*



## MEMBERS

CLYDE ANDERSON  
 THERON ANGLIN  
 SHELTON BRANNEN  
 DANA BUTLER

TOM DEWS  
 ARTHUR FARRAR  
 MILTON FINLEY  
 DAVID GUFFEY

TOM JENKINS





## DELTA SIGMA



FIRST ROW: Ramsey, Paine, Braswell, Brown, Crook, Barber, McCormack, DeLoach, Mincey, Vandiver.  
 SECOND ROW: Cowart, Deal, DeLoach, McLeod, Groover, Joyner, Morrison, Thayer, Johnson, Young.  
 THIRD ROW: Hamilton, Ramsey, Wilkinson, Hogarth, Robertson, Zetterower, Blitch, Olliff, Bunn, Patterson.

### OFFICERS

BERT H. RAMSEY	President
CHARLIE PAINE	Vice-President
ALBERT BRASWELL	Secretary
ROBERT BROWN	Treasurer
CURTIS CROOK	Chaplain
D. R. BARBER, JR.	Scribe
DR. R. J. H. DELOACHE	Adviser
MR. H. J. MCCORMACK	Adviser
ELOISE MINCEY	Sponsor



### HISTORY:

Founded G. S. M. C., Tifton, Ga., 1929;  
 S. G. T. C., 1932.

COLORS: *Gold and Blue* FLOWER: *Red Rose*

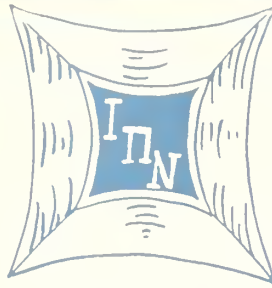
### MEMBERS

TOM VANDIVER	JAMES DEAL
LEROY COWART	JOE JOYNER
JIMMIE DELOACH	HAYGOOD MORRISON
JAMES THAYER	J. BRANTLEY JOHNSON
BILL MCLEOD	MARION YOUNG
GERALD GROOVER	

### PLEDGES

ORMAN HAMILTON	FRANK ZETTEROWER
TINY RAMSEY	JAMES BLITCH
WILLIAM WILKINSON	FRANK OLIFF
JACK HOGARTH	CHARLES BUNN
JODE ROBERTSON	PAT PATTERSON





## IOTA PI NU

HISTORY: Founded 1931

COLORS: *Scarlet and Emerald*

FLOWER: *Poinsettia*



I: Roy Rabun, Bartow Miller, James Wrinkle, Harold Rigsby, Harry Wilson, Charlie Browne. II: Priscilla Prather, Student Sponsor; William Ware, Vice-President; David Proctor, Chaplain; Ted Booker; Copeland Ozier, President; Miss L. Hogarth, Faculty Sponsor; Willard Clanton, Secretary; Frank Hook, Treasurer; Marion Carpenter. N: John Cromley, William Winn, James Aldred, Herschill Hamil, Tom Fraser, Hugh Maxwell, Herman Wrinkle.

### PLEDGES



FIRST ROW: W. D. Anderson, Robert Bell, I. W. Bragg, Tom Carpenter, Harry Crawley, Gene L. Hodges, Harold Houston. SECOND ROW: W. L. Kennan, Robert Moye, Howell Perryman, James Proctor, Harris Rape, Tom Scott, William Talbert.

## PAN-HELLENIC COUNCIL

### OFFICERS

ELOISE MINCEY . . . . .	<i>President</i>
PRISCILLA PRATHER . . . . .	<i>Vice-President</i>
JEWELL VANDIVER . . . . .	<i>Secretary</i>
BURDELLE HARRISON . . . . .	<i>Treasurer</i>

### MEMBERS

ALICE HILL  
DORIS WALLACE

REBA YARBROUGH  
VIRGINIA SANDS

ANNE FELTON

### PURPOSE

To promote closer co-operation among the sororities on the campus with the hope of providing a more comprehensive social program.



LEFT TO RIGHT: Felton, Mincey, Prather, Vandiver, Harrison, Hill, Sands, Wallace, Yarbrough.



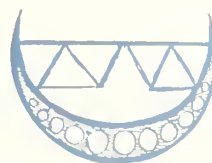


LEFT TO RIGHT: Bostwick, Grace, Taylor, Fries, Mercer, Wallace, McNeely, Harrison.

## DELTA LAMBDA DELTA

### OFFICERS

DORIS WALLACE . . . . . *President*  
 WINONA CARPENTER . . . . . *Vice-President*  
 REBECCA GRACE . . . . . *Secretary-Treasurer*  
 MR. RONALD NEIL . . . . . *Sponsor*  
 MRS. RONALD NEIL . . . . . *Sponsor*



### MEMBERS

OLLIE B. BOSTWICK  
 WINONA CARPENTER  
 WINNIERED CORBETT  
 MARY FRIES  
 REBECCA GRACE  
 BURDELLE HARRISON  
 THELMA HARRISON  
 VIRGINIA KING  
 MARY MERCER  
 MARCIA MCNEELY  
 ANNIE MAE TAYLOR  
 DORIS WALLACE

### HISTORY:

Founded 1927

### FLOWER:

*Old Maid*

### MOTTO:

*"A good time in a good way"*



Mr. and Mrs. Neil



Mr. and Mrs. Hanner and W. S., Jr.

## DUX DOMINA

COLORS: *Yellow and White* FLOWER: *Chrysanthemum*

MOTTO: *To lead rather than to be led*

### OFFICERS

ALICE HILL . . . . . *President*  
 VIRGINIA SANDS . . . . . *Vice-President*  
 MARION LANIER . . . . . *Secretary*  
 CATHERINE GAINES . . . . . *Treasurer*  
 DORIS SANDS . . . . . *Chaplain*  
 MR. W. S. HANNER . . . . . *Sponsor*  
 MRS. W. S. HANNER . . . . . *Sponsor*  
 MASTER W. S. HANNER, JR. . . . . *Mascot*

### MEMBERS

MARJORIE COBB  
 MARION EDWARDS  
 CATHERINE GAINES  
 MIRIAM GIRARDEAU  
 ALICE HILL  
 ELIZABETH HORN

MARION LANIER  
 ROSE LOCKHART  
 MARY POWELL  
 MERLE ANNE POWELL  
 VIRGINIA SANDS  
 DORIS SANDS

### PLEDGES

MARGARET REMINGTON

SARA E. GODBEE

VIRGINIA BLITCH



## EPICUREAN SORORITY

MOTTO: *Eat, drink, and be merry*

FLOWER: *Poinsettia*

SONG: *"Star Dust"*

### OFFICERS

ELOISE MINCEY . . . . . *President*

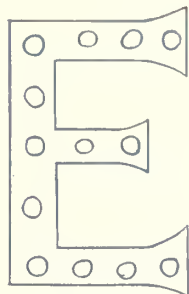
PRISCILLA PRATHER . . . . . *Vice-President*

EMILY AKINS . . . . . *Secretary*

FRANCES DEAL . . . . . *Treasurer*

ANNE BREEN . . . . . *Chaplain*

MISS SUE HAMMACK . . . . . *Sponsor*



"SUSIE-O"

### MEMBERS

MARY EDNA GUNTER  
BETTY SMITH  
MARGUERITE MATTHEWS  
JUNE CARPENTER

FRANCES HUGHES  
TOMMIE GRAY  
FRANCES BREEN  
MARGARET ANNE JOHNSTON



FRONT ROW: June-bug, Pris, Frances D., Betty, Annie B. BACK ROW: Mug, T. B., Baby, Tommie, Emily, Meg, Froggie, Mincey.





## LAMBDA THETA CHI

SONG:  
"I'll Be Faithful"

FLOWER:  
Sweetheart Rose

### OFFICERS

ANNE FELTON . . . . .	President
REBA YARBROUGH . . . . .	Vice-President
LORRAINE ARNSDORFF . . . . .	Secretary
DOROTHY CROMLEY . . . . .	Treasurer
SARA MORRIS . . . . .	Chaplain
MISS TRUSSELL . . . . .	Sponsor
DR. AND MRS. DESTLER . . . . .	Sponsor

### MEMBERS

AGNES HODGES  
EMOLYN RAINEY  
JEWELL VANDIVER  
BETTIE MCLENORE



FRANCES HARRISON  
ISABEL TRUSSELL  
EULA BETH JONES  
LORRAINE BROCKETT

# THE X CLUB

## OFFICERS

MARY EDITH ANDREWS . . . . . *President*  
 DOROTHY CALDWELL . . . . . *Vice-President*  
 EMILY HEATH . . . . . *Secretary*  
 CECELINE SWINSON . . . . . *Treasurer*  
 DR. AND MRS. CARRUTH . . . . . *Sponsors*  
 MR. AND MRS. MCCORMACK . . . . . *Sponsors*



Heath, Andrews, Swinson, Caldwell.

## MEMBERS

LUCY BUNCE  
 CECELINE SWINSON  
 SALLIE SMITH  
 ELLENDER SCALES  
 MARY EDITH ANDREWS  
 KATHERINE DUBBERLY

JANETTA CALDWELL  
 DOROTHY CALDWELL  
 EMILY HEATH  
 MARJORIE BOATRIGHT  
 NELL PITTMAN

IRA LOIS BROWN  
 SUE SHIVERS  
 MARY ELLEN BATTLE  
 RUTH CONE  
 FAY HALL  
 JUANITA THOMAS

MOTTO: *"Happiness is not perfected until it is shared"*

COLORS: *Yellow and Green*

FLOWER: *Daffodil*



FIRST ROW: Andrews, Battle, Shivers, Hall, Heath. SECOND ROW: Powell, Bunce, Swinson, Boat right, Thomas, Pittman, Scales. THIRD ROW: Dubberly, Cone, Caldwell, McCormack, Carruth, Carruth, Caldwell, Smith, Brown.





Watchin' the world go by . . . Dr. Pittman welcomes old grads . . . Look behind you, Peggy . . . The Queen . . . Dr. "Fu Manchu"?? . . . The Undertakers . . . Little Strange grab flag, Big Strange heap proud . . . Funny Frank . . . D. S.??? . . . Before the advent of furniture in Juliette Lowe . . . The "Professors" on a jaunt.

*Here 'n there*





# FEATURES

*Beauty Section*

*May Court*



FRANCES BREEN

WILLODEAN CROWELL



ROSE LOCKHART



ANNE FELTON







ELOISE MINCEY

JANE POOLE



VIRGINIA SANDS



PRISCILLA PRATHER





LEFT TO RIGHT: Felton, F. Breen, Hill, Mann, Gardner, Prather, Mincey, Girardeau, Sands, Deal, Godbee, A. Breen.





LEFT TO RIGHT: Felton, F. Breen, Hill, Mann, Gardner, Jones, Prather, Bagley, Mincey, Girardeau, Sands, Deal, Godbee, A. Breen.



## MAY COURT



### OFFICERS

PRISCILLA PRATHER . . . . . *Maid Marion, Queen of the May*  
 ELOISE MINCEY . . . . . *Maid of Honor*  
 SARA BETTY JONES . . . . . *Train Bearer*  
 HENDRY BAGLEY . . . . . *Robin Hood*

### ATTENDANTS

#### SENIORS

ANNE FELTON

ALICE HILL

VIRGINIA SANDS

#### JUNIORS

ANN BREEN

KITTY GARDNER

MIRIAM GIRARDEAU

#### SOPHOMORES

FRANCES BREEN

FRANCES DEAL

#### FRESHMEN

ABBIE MANN

BETTY SMITH

#### COURT JESTERS

JUNE CARPENTER

AZILE HARTLEY



High steppers . . . . . Late to lunch . . . . . Lost, Bob?? . . . . . Homecoming Parade . . . .  
The freshmen fight for freedom . . . . . So I look funny, do I? . . . . . N. Y. A. Boys welcome  
Alumni . . . . . East Hall girls keep the home fires burning and win the prize . . . . . The band on  
parade . . . . . Pledges welcome Alumni . . . . . Singin' in the rain . . . . . Where's B. H.?  
. . . . . I must BE funny looking . . . . . Cut it out . . . . . Cut it out . . . . . Just talking it over.

# Snaps

R. J. KENNEDY  
*President*

J. L. MATTHEWS  
*Vice-President*

W. L. DEJARNETTE  
*Cashier*

Conservative Management

Courteous Service

# Bulloch County Bank

STATESBORO, GEORGIA

✓ ✓ COMPLIMENTS OF ✓ ✓

W A L T E R  
A L D R E D  
C O M P A N Y

EVERYTHING IN BUILDING  
SUPPLIES

STATESBORO

::

GEORGIA

✓ ✓ COMPLIMENTS OF ✓ ✓

H . S . C A N F I E L D

Representative of . . .

HERFF-JONES COMPANY



When in Savannah Visit  
the Store Beautiful . . .

SHOES FOR THE YOUNG  
MEN AND YOUNG LADIES

●

**GLOBE SHOE  
COMPANY**

●

17 E. Broughton Street

SAVANNAH :: GEORGIA

---

**BANNER STATES PRINTING CO.**

●

“A Reliable Institution”

●

27 W. Main Phone 421

STATESBORO :: GEORGIA

---

VISIT . . .  
**CECIL KENNEDY'S**

●

SANDWICHES  
OF ALL KINDS

●

Short Orders Sea Foods  
Private Dances

**H . W . S M I T H**

Statesboro's Leading Jeweler

*Headquarters for*  
SORORITY AND FRATERNITY  
JEWELRY

●

Teachers and Students  
Always Welcome

●

20 South Main Street

STATESBORO :: GEORGIA

---

**LANIER'S MORTUARY**  
*Successors to Statesboro Undertaking Co.*

●

**Funeral Directors**

Ambulance Service :: Lady Assistant

... PHONES ...  
DAY 340 NIGHT 415

STATESBORO :: GEORGIA

---

**BRODHEAD - GARRETT  
COMPANY**

CLEVELAND, OHIO

|||||

*Specializing in*  
INDUSTRIAL ART SUPPLIES, EQUIPMENT  
AND SOFT-TEXTURE LUMBER

C O M P L I M E N T S

‘ ‘ O F ‘ ‘



# STATE and GEORGIA THEATRES

F. W. DARBY LUMBER CO.

K i l n   D r i e d  
D r e s s e d   L u m b e r

P H O N E

3 8 0

*DRIED RIGHT*

*DRESSED RIGHT*

O L L I F F   A N D   S M I T H

Fancy Groceries  
Fresh Meats

SEEDS FOR THE GARDEN AND FIELDS  
POULTRY FEED  
AND SUPPLIES  
HAY AND GRAIN

1 1 : P H O N E S : 1 6

E A T   A N D   D R I N K

. . . a t . . .

# The Little Store



---

## E. A. SMITH GRAIN COMPANY



EVERYTHING IN  
Builders' Supplies and  
Fertilizers



STATESBORO

::

GEORGIA

P H O N E   1 7 1

That I like my clothes,  
Most everyone knows,  
"You dress in high  
fashion," they say.  
But don't compliment me.  
Because, don't you see,  
It's my Varsity-Town  
Suit that makes me  
look that way.



*Swing into a New Varsity-Town Suit from*

**The Jones Co.**  
Terrell T. Tuten ~ Carl J. Kraft  
QUALITY WEARING APPAREL FOR MEN AND BOYS

SAVANNAH

::

GEORGIA



... D R I N K ...

The Coca-Cola logo is rendered in its iconic script typeface. The words "Coca-Cola" are written in a fluid, cursive style. Below the "Cola" portion, the words "TRADE MARK" and "REGISTERED" are printed in a small, sans-serif, all-caps font.

## IN BOTTLES

## It's the Refreshing Thing to Do

## COMPLIMENTS

FROM     ✓     ✓     ✓

# THE FAIR STORE

**M c L E L L A N ' S**

## A VARIETY OF

## 5c AND 10c ITEMS TO FIT YOUR NEEDS

# Brannen-Thayer Monument Company

*"MONUMENTS OF QUALITY"*

STATESBORO

• •

## GEORGIA

# Statesboro Buggy and Wagon Company

Hardware, Farm Implements and Glass  
Mules, Harness, Wire, Pipe and  
Pipe Fittings

STATESBORO

• •

## GEORGIA

Meet Your  
Friends At . . .

THE  
COLLEGE  
PHARMACY

"WHERE THE CROWDS GO"

*Prompt, Courteous Service*

Phone 414                    ::                    19 S. Main St.

COMPLIMENTS OF

H. L. BARNHARDT

AGENT FOR

ROYAL TYPEWRITERS

44 Abercorn Street

SAVANNAH                    ::                    GEORGIA

*It's Smart to Be THRIFTY . . .*

That's why students of  
America look to

P E N N E Y ' S

J. C. PENNEY CO., INC.

SAVANNAH                    ::                    GEORGIA

*Compliments of*

JOHN EVERETT COMPANY

STATESBORO                    ::                    GEORGIA

STATESBORO DRY CLEANERS

*Our Personal Care Is  
Your Guarantee of  
Expert Cleaning*

OFFICE 265                    :                    PLANT 281  
HARRY BRUNSON, Prop.

STATESBORO                    ::                    GEORGIA

*Compliments of*

STICKLEY BROTHERS  
CORPORATION

*Manufacturers of*  
INSTITUTIONAL FURNITURE  
GRAND RAPIDS, MICHIGAN

‘ ‘ COMPLIMENTS OF ‘ ‘

## MARSH CHEVROLET CO., INC.

E. Main Street ‘ Phone 88

STATESBORO, GEORGIA



“You’ll Be Ahead With a  
Chevrolet”

‘ ‘ COMPLIMENTS OF ‘ ‘

## STATESBORO GROCERY COMPANY



STATESBORO :: GEORGIA

Hotel ‘ Restaurant ‘ Institutional  
Equipment



## THE STRAUS COMPANY, INC.

*“The Largest Equipment House  
in the South”*

RICHMOND :: VIRGINIA

## W. C. AKINS & SON

HARDWARE *and* GROCERY



Service Is Our Motto

‘ ‘ SEE US BEFORE YOU BUY ‘ ‘

*Compliments of ‘ ‘ ‘*

## SMITH BROTHERS IMPLEMENT COMPANY



*John Deere Quality Farm Equipment*

36 West Main Street ‘ Phone 378

STATESBORO :: GEORGIA

*Compliments of ‘ ‘ ‘*

## BRADY’S DEPARTMENT STORE

*“Where Quality Is Higher Than Price”*



17 North Main Street

STATESBORO :: GEORGIA



GIFTS THAT LAST . . .

**GRIMES JEWELRY CO.**

•

*Diamonds • Watches • Silverware*

*Glassware • China, Etc.*

STATESBORO

::

GEORGIA

**BULLOCH DRUG COMPANY**

•

*Prescriptions A Specialty*

•

**WHITMAN CANDIES**

5 S. Main Street

:

Phone 94-J

**E. C. OLIVER COMPANY**

•

LADIES' and GENTS'  
FURNISHINGS and SHOES

•

STATESBORO

::

GEORGIA

**S. W. LEWIS, INC.**



STATESBORO

::

GEORGIA

**THE AMERICAN OIL COMPANY**

Office Drive-In Service Station  
Opposite Jaeckel Hotel

•

*"Watch the College Grow With Amoco"*

•

A. B. McDougald, Agent

Fill up with Amoco at College Pump

Steinway Pianos

•

Kimball Pianos

Hammond Organs

•

**ALNUTT MUSIC COMPANY**

216 Broughton Street, West

SAVANNAH

::

GEORGIA

**THE FASHION SHOP**

*"exclusive, but not expensive"*

•

LADIES' READY-TO-WEAR  
AND ACCESSORIES

STATESBORO

::

GEORGIA

Phone 350

**ALDRED BROS.**

Staple and Fancy Groceries

*Fresh and Cured Meats  
Country Produce*

•

*"MEATS YOU CAN EAT"*

STATESBORO

::

GEORGIA

Phone 472

---

C O M P L I M E N T S

‘ ‘ O F ‘ ‘

**Statesboro Chamber  
of Commerce**

---

## THE N — N O W

39 A. D.— 1st CENTURY  
939 A. D.—10th CENTURY  
1939 A. D.—20th CENTURY



Each period reflects a change in  
the mode and standards of living



But the fundamental principles of economy remain unchanged.  
Complete your education by learning the value of thrift.

## SEA ISLAND BANK

Safety      '      Courtesy      '      Service

MEMBER F. D. I. C.

---

B U L L O C H T I M E S

THE SOUTH GEORGIA TEACHERS  
COLLEGE

●  
“Your Home Newspaper”

●  
U S E S

STATESBORO

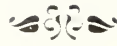
∴

GEORGIA

●  
M O N A R C H  
F I N E R F O O D S







C O M P L I M E N T S

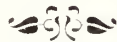
‘ ‘ O F ‘ ‘

# Sancken's Ice Cream Company

AUGUSTA

:::

GEORGIA



‘ ‘ C O M P L I M E N T S O F ‘ ‘

**THACKSTON'S DRY  
CLEANERS**



HOBSON Du BOSE

*Proprietor*



41 E. Main Street

Phone 18

**E . D . C R A I G**

*Representing*

**A. C. Horn Company**

LONG ISLAND CITY, N. Y.



*Manufacturers of*

Waterproofings ‘ Floor Treatments

Technical Paints

WESTERN WATERPROOFING COMPANY

ST. LOUIS, MISSOURI



P. O. Box 455

Phone 2-2097

SAVANNAH

::

GEORGIA

•  
D E R S T ' S

**H O L S U M**

B R E A D  
•

H . M I N K O V I T Z & S O N S  
•

D E P A R T M E N T  
S T O R E  
•

STATESBORO :: GEORGIA

DONALDSON-SMITH CLOTHING  
COMPANY  
•

"OUTFITTERS FOR  
MEN AND BOYS"  
•

STATESBORO :: GEORGIA

FRANKLIN DRUG COMPANY

REXALL QUALITY DRUGS  
•

*Professional Pharmacists*

P H O N E 2 STATESBORO

L O G A N H A G A N

TAXI and TRUCKING

*Agents for*

FIVE TRANSPORTATION CO.  
•

Overnight Service from Atlanta,  
Macon, Savannah and Jacksonville

Day 172 : Phones : Night 381-M

*Compliments of ' ' '*

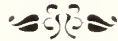
**BLITCH RADIO SERVICE**  
•

RCA SOUND AND  
RECORDING DEVICES



# Howard Lumber Company

EVERYTHING IN  
BUILDERS' SUPPLIES AND FERTILIZERS



STATESBORO ::: GEORGIA

. . . Phone 171 . . .

---

## LIKE MILK?

Try a Bottle of Pure  
Raw Milk from

**WESTSIDE DAIRY**



*Tested Cows*

*State Inspected*

Greenspot Orangeade and Chocolate Milk



*Ask for These Delicious Drinks at  
"THE LITTLE STORE"*

**Linton G. Banks, Proprietor**

Phone 3831

"WE HAVE . . .

a special planning service department to  
aid the college men and women with their  
equipment problems in school."



Please Write Us



**THE McGREGOR COMPANY**

ATHENS

::

GEORGIA

1920

1939

THE MOST OF OUR NEW BUSINESS COMES  
FROM RECOMMENDATION OF SATISFIED  
CUSTOMERS . . .



Alfred Dorman Company

STATESBORO : SYLVANIA : JESUP



WE DELIVER PROMPTLY  
AND COLLECT PROMPTLY

1920

1939



## SUCCESSFUL ANNUALS

Require the services of experienced and expert craftsmen, trained in every detail of the processes of creating • planning layout and design • typesetting • printing lithographing and binding... Throughout half a century this company has pioneered in the production of the highest type of printing... Our services include a special college annual sales and service organization... Abundant equipment • modern and complete... Prices representing maximum in value



FOOTE & DAVIES COMPANY

PRINTING • LITHOGRAPHING • ENGRAVING

ATLANTA





★ THE MARK THAT  
IDENTIFIES THE SOUTH'S  
FINEST YEARBOOKS

PHOTO-PROCESS ENGRAVING CO.

115 - 119 LUCKIE STREET ★ ATLANTA GEORGIA

















RESERVE  
LH  
1  
.G43  
R4  
1939

ZACH S. HENDERSON LIBRARY  
0 2001 0407687 8

FOR REFERENCE

NOT TO BE TAKEN FROM THIS ROOM

DEMCO



