

Georgia Southern University

Digital Commons@Georgia Southern

The George-Anne Inkwell Edition Newsletter

Student Media

8-17-2021

The George-Anne Inkwell Edition

Georgia Southern University

Follow this and additional works at: <https://digitalcommons.georgiasouthern.edu/ga-inkwell-newsletter>

Recommended Citation

Georgia Southern University, "The George-Anne Inkwell Edition" (2021). *The George-Anne Inkwell Edition Newsletter*. 12.

<https://digitalcommons.georgiasouthern.edu/ga-inkwell-newsletter/12>

This newsletter is brought to you for free and open access by the Student Media at Digital Commons@Georgia Southern. It has been accepted for inclusion in The George-Anne Inkwell Edition Newsletter by an authorized administrator of Digital Commons@Georgia Southern. For more information, please contact digitalcommons@georgiasouthern.edu.



Top stories from the week of August 17, 2021

Welcome to the weekly George-Anne Inkwell Edition newsletter! Thank you for your present and future readership. Our print publication comes out every other Thursday starting on Aug. 19. Be sure to grab a paper from a bin around campus and check more stories out online [here](#).

THE LATEST NEWS FROM THE INKWELL

Georgia Southern Delivers Top-Tier Mental Health During the Pandemic

Georgia Southern University counseling centers experienced three times the crisis calls due to suicidal intent or ideation in the 2020-21 academic year.

The Counseling Center responded to this increase by redesigning how they deliver services to students, increasing students' ability to access those services by 26% and distributing H.E.R.O Folders.

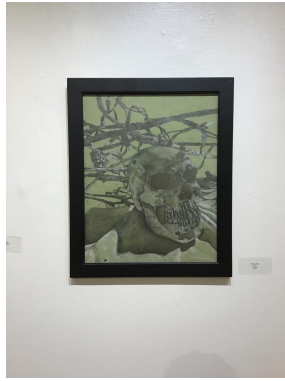
MENTAL HEALTH RESPONSE

- Saw a 300% increase in crisis contacts due to suicidal ideation or intent
- Redesigned service delivery model – provided 24/7 access to therapists; increased same-day access; cut wait time in half; embedded Psychologist model; 26% increase in student access of clinical services
- GaSou Counseling Center, based on the Center for Collegiate Mental Health comparative nationwide study, demonstrated a reduction of symptoms/psychological distress that is greater than 93.3% of the university counseling center clients nationwide!!!
- Distributed to campus “Mental Health Folders”

GEORGIA SOUTHERN

Art Education Exhibition: Photo Gallery

The Art Education Exhibition in the Fine Arts Gallery from Aug. 11 to Sept. 3 features works



created by Yaschari Camacho,
Sabrina Harn, Hannah
Harrington, Erica Folk and
Hannah Register.

The George-Anne Inkwell Edition is looking for a Marketing Coordinator!

Marketing coordinator(s), Armstrong campus
Promote The George-Anne Inkwell Edition to
the Armstrong and Liberty campus
communities, including:

Weekly or more frequent tabling, in
coordination with co-editors-in-chief.

Assisting in hand-to-hand distribution of newspapers.

Social media publicity.

Promote recruiting of new staff members, in coordination with co-
editors-in-chief.

No experience required..

Modest scholarship available..

To apply: [https://docs.google.com/forms/d/e/
1FAIpQLSdQtRMwRnOfzqPOTSHicf9](https://docs.google.com/forms/d/e/1FAIpQLSdQtRMwRnOfzqPOTSHicf9)

[ibuVLS8Vah7TOLLJ2OGq5Sbm4w/viewform?usp=sf_link](https://docs.google.com/forms/d/e/1FAIpQLSdQtRMwRnOfzqPOTSHicf9/ibuVLS8Vah7TOLLJ2OGq5Sbm4w/viewform?usp=sf_link)



CRI Offers Newly Renovated ARC and Full Fall Schedule



The Campus Recreation and
Intramurals department (CRI)
has undergone many changes in
the last year, in order to keep up
with COVID-19 regulations.
Returning students may be
unaware of information that

could be useful to them in the coming semesters.

The Armstrong Recreation Center (ARC) has undergone significant
changes and renovations over this past summer.

The Freshman's Guide to Living in a Dorm Room

Over the summer the Our House Newsletter covered topics such as how to get along with your roommate, ways to build your resume, a guide to Eagle Express and two distinct articles with tips to succeed in your first semester of college.

However, there is one topic that the newsletter didn't cover: the basics of living in a dorm room.



More information on this week's stories:

[H.E.R.O Folder](#)

[University Counseling Center](#)

[George-Anne Inkwell Marketing Coordinator Application](#)

[IMLeagues](#)

[Campus Recreation and Intramurals Website](#)

[Main Housing Website](#)

[Our House](#)

Visit our website at <https://thegeorgeanne.com/category/inkwell/>