

Spring 2009

Spring 2009 AASU Data Digest

Armstrong State University

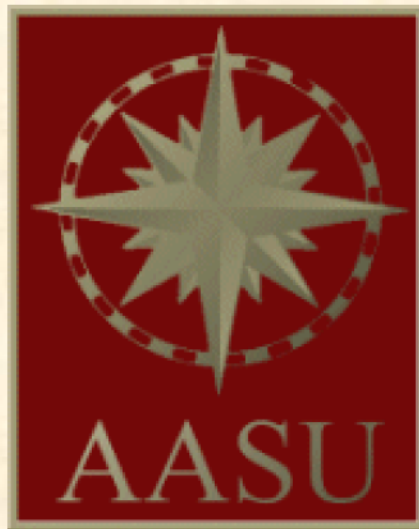
Follow this and additional works at: <https://digitalcommons.georgiasouthern.edu/armstrong-data-digests>

Recommended Citation

Armstrong State University, "Spring 2009 AASU Data Digest" (2009). *Armstrong Data Digests*. 12.
<https://digitalcommons.georgiasouthern.edu/armstrong-data-digests/12>

This other is brought to you for free and open access by the Armstrong Office of Institutional Research at Digital Commons@Georgia Southern. It has been accepted for inclusion in Armstrong Data Digests by an authorized administrator of Digital Commons@Georgia Southern. For more information, please contact digitalcommons@georgiasouthern.edu.

ARMSTRONG ATLANTIC STATE UNIVERSITY



Spring 2009 Data Digest

**Published by
Office of Institutional Research
912.344.3235
www.ir.armstrong.edu**

Table of Contents

At A Glance

| | |
|--|---|
| Armstrong at a Glance | 1 |
| Five Year Undergraduate & Graduate Enrollment Trends | 3 |

Enrollment

| | |
|--|----|
| Undergraduate Headcount Enrollment | 4 |
| Graduate Headcount Enrollment | 5 |
| Undergraduate Enrollment by FT/PT Status | 6 |
| Graduate Enrollment by FT/PT Status | 7 |
| Undergraduate Enrollment by Ethnic Group | 8 |
| Graduate Enrollment by Ethnic Group | 9 |
| Undergraduate Enrollment by County of Origin | 10 |
| Graduate Enrollment by County of Origin | 11 |
| Learning Support Enrollment | 12 |

Student Credit Hours

| | |
|--|----|
| Student Credit Hours by College and University | 13 |
| Total Student Credit Hours | 14 |
| Breakdown of University Credit Hour Comparison | 15 |
| Departmental Productivity Ratios | 16 |

Section Size

| | |
|--|----|
| Courses by Level, Section, and Type of Instruction | 17 |
|--|----|

Armstrong Atlantic At A Glance

| | <u>Undergraduates</u> | <u>Graduates</u> | <u>Overall</u> <u>Total</u> |
|---|-----------------------|------------------|--------------------------------|
| Enrollment, Spring 2009 | 5,916 | 888 | 6,804 |
| Enrollment, Spring 2008 | 5,688 | 782 | 6,470 |
| Percent Change in Enrollment | 4.0% | 13.6% | 5.2% |
| Percent Full-Time* | 54% | 26% | 62% |
| Percent Part-Time* | 46% | 75% | 38% |
| Attempted Student Credit Hours, Spring 2009 | 69,111 | 6,209 | 75,320 |
| Attempted Student Credit Hours, Spring 2008 | 64,976 | 5,552 | 70,528 |
| Percent Change in Hours | | | 6.8% |
| FTE, Spring 2009** | 3,926 | 297 | 4,223 |
| FTE, Spring 2008* | 3,660 | 266 | 3,926 |
| Percent Change in FTE | | | 7.6% |
| Percent Female | 65.6% | 79.8% | 67.8% |
| Percent Male | 34.3% | 20.0% | 32.2% |

Enrollment by Level of Classification

| | | |
|---------------------------|-------|-------|
| Freshmen/Joint Enrollment | 1,656 | 24.3% |
| Sophomore | 1,300 | 19.1% |
| Junior | 1,174 | 17.3% |
| Senior | 1,609 | 23.6% |
| Transient/Other | 177 | 2.6% |
| Graduate | 888 | 13.0% |

Enrollment by Ethnic Group

| | | |
|--------------------------------|-------|-------|
| American Indian/Alaskan Native | 26 | 0.4% |
| Asian/Pacific Islander | 239 | 3.5% |
| Black/Non-Hispanic | 1,567 | 23.0% |
| Hispanic | 245 | 3.6% |
| Multi-Racial | 501 | 7.4% |
| White/Non-Hispanic | 4,226 | 62.1% |

* Full-time status is based upon 12 or more SCH for undergraduates and 9 or more SCH for graduates. Part-time is less than 12 for undergraduates and less than 9 for graduates.

** EFT is the Board of Regents definition of full-time equivalency.

| | | |
|-------------------|-------|-------|
| Georgia Residents | 5,872 | 86.3% |
| Out-of-State | 795 | 11.7% |
| Foreign Students | 137 | 2.0% |

| | | |
|--------------------|------------|---------------|
| Joint Enrollment | 6 | 0.7% |
| Beginning Freshmen | 233 | 27.3% |
| Transfer Freshmen | 85 | 10.0% |
| Transfer Sophomore | 113 | 13.2% |
| Transfer Junior | 101 | 11.8% |
| Transfer Senior | 44 | 5.2% |
| Transient/Other | 75 | 8.8% |
| Graduate | 197 | 23.1% |
| Total | 854 | 100.0% |

| | |
|--------------------------------|------------|
| Due to System Requirement | 142 |
| Due to Institution Requirement | 4 |
| Due to Voluntary Enrollment | 18 |
| Total | 164 |

| | |
|---------------|------|
| Undergraduate | 25.9 |
| Graduate | 34.4 |

| | Female | Male | Total |
|----------------|--------------|--------------|--------------|
| 24 and younger | 2,495 | 1,374 | 3,869 |
| | 36.7% | 20.2% | 56.9% |
| 25-35 | 1,363 | 545 | 1,908 |
| | 29.6% | 25.3% | 28.0% |
| 36-55 | 670 | 197 | 867 |
| | 14.6% | 9.2% | 12.7% |
| 56 and older | 72 | 36 | 108 |
| | 1.6% | 1.7% | 1.6% |
| TOTAL | 4,629 | 2,175 | 6,804 |

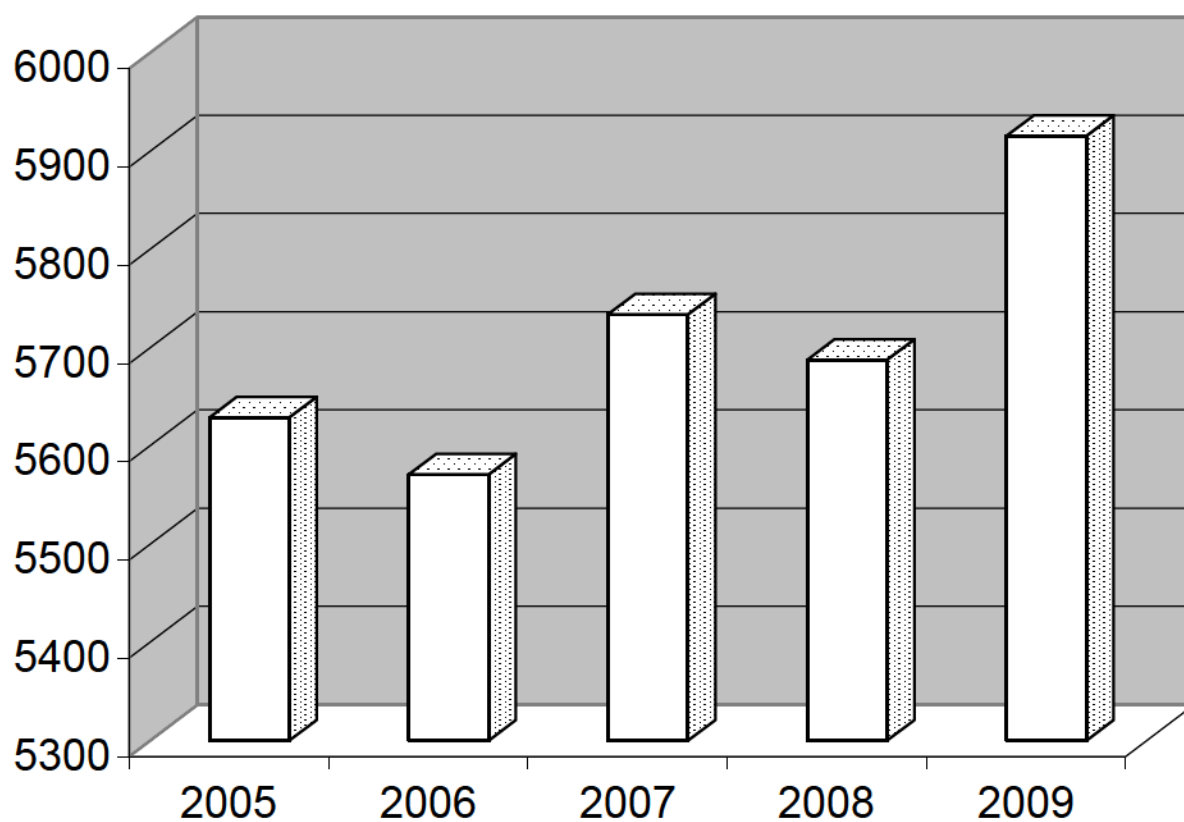
Five Year Undergraduate and Graduate Enrollment Trends At a Glance

| | Spring 2005 | Spring 2006 | Spring 2007 | Spring 2008 | Spring 2009 | # Change | % Change |
|-------------------------|----------------|----------------|----------------|----------------|----------------|-------------|-------------|
| Headcount | 6,366 | 6,279 | 6,344 | 6,470 | 6,804 | 438 | 6.9% |
| FTE | 5,132 | 5,089 | 5,230 | 5,411 | 5,779 | 647 | 12.6% |
| Ethnic Status | | | | | | | |
| American Indian | 17 | 23 | 23 | 25 | 26 | 9 | 52.9% |
| Asian | 187 | 194 | 193 | 205 | 239 | 52 | 27.8% |
| Black | 1,418 | 1,426 | 1,450 | 1,485 | 1,567 | 149 | 10.5% |
| Hispanic | 205 | 210 | 231 | 232 | 245 | 40 | 19.5% |
| Multi-Racial | 318 | 345 | 360 | 417 | 501 | 183 | 57.5% |
| White | 4,221 | 4,081 | 4,087 | 4,106 | 4,226 | 5 | 0.1% |
| County of Origin | | | | | | | |
| Chatham | 2,844 | 2,729 | 2,680 | 2,708 | 2,840 | -4 | -0.1% |
| Bryan | 423 | 384 | 431 | 453 | 445 | 22 | 5.2% |
| Camden | 89 | 99 | 88 | 105 | 88 | -1 | -1.1% |
| Effingham | 372 | 334 | 369 | 362 | 385 | 13 | 3.5% |
| Glynn | 201 | 176 | 178 | 175 | 191 | 13 | 3.5% |
| Liberty | 548 | 579 | 572 | 557 | 504 | -44 | -8.0% |
| Long/McIntosh | 34 | 66 | 67 | 83 | 83 | 49 | 144.1% |
| Other GA Counties | 1,145 | 1,099 | 1,123 | 1,192 | 1,419 | 274 | 23.9% |
| Out of State | 710 | 879 | 903 | 918 | 932 | 222 | 31.3% |

Undergraduate Headcount Enrollment

| Undergraduate Enrollment | | | | | | | |
|--------------------------|----------------|----------------|----------------|----------------|----------------|--------------------|--------------------|
| | Spring 2005 | Spring 2006 | Spring 2007 | Spring 2008 | Spring 2009 | 5 Year # Change | 5 Year % Change |
| Total | 5629 | 5571 | 5734 | 5688 | 5916 | 287 | 5.1% |
| # Change | | -58 | 163 | -46 | -59 | | |
| % Change | | -1.0% | 2.9% | -0.8% | -1.0% | | |

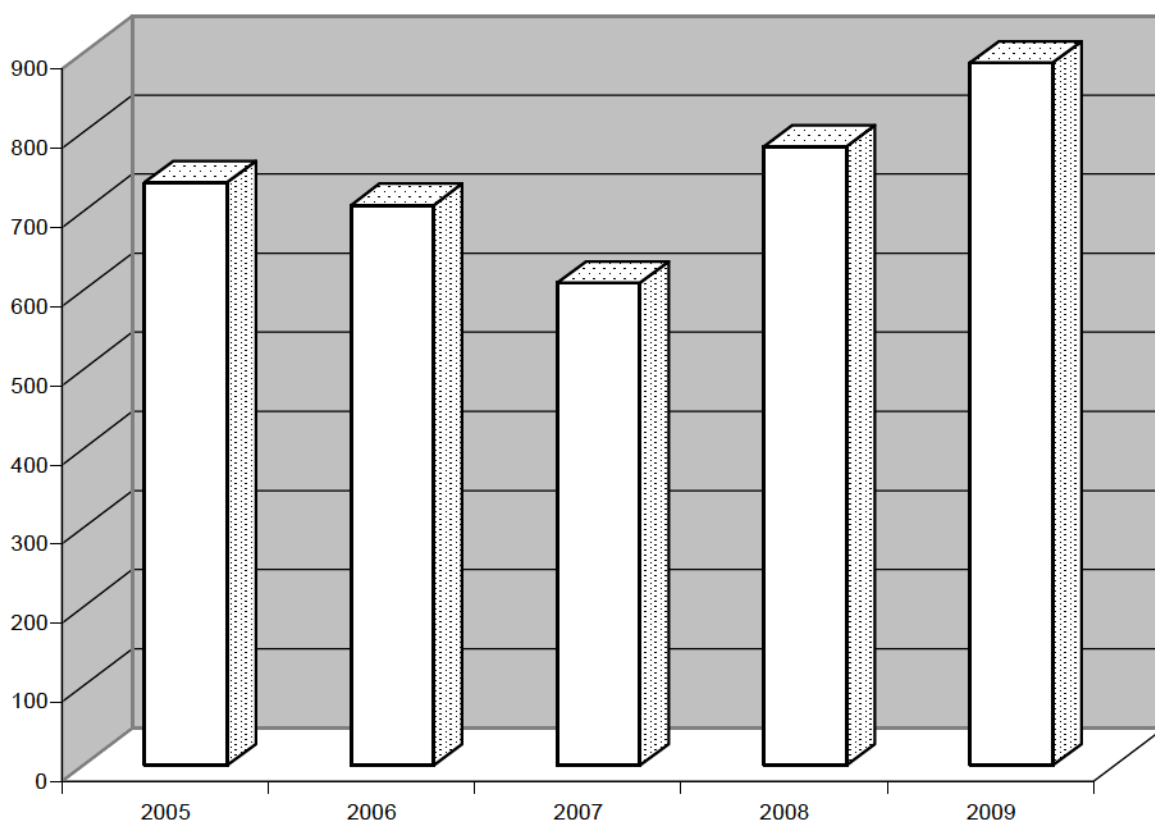
Undergraduate Headcount Enrollment



Graduate Headcount Enrollment

| Graduate Enrollment | | | | | | | |
|---------------------|----------------|----------------|----------------|----------------|----------------|--------------------|--------------------|
| | Spring 2005 | Spring 2006 | Spring 2007 | Spring 2008 | Spring 2009 | 5 Year # Change | 5 Year % Change |
| Total | 737 | 708 | 610 | 782 | 888 | 151 | 20.5% |
| # Change | | -29 | -98 | 172 | -45 | | |
| % Change | | -3.9% | -13.8% | 28.2% | -5.8% | | |

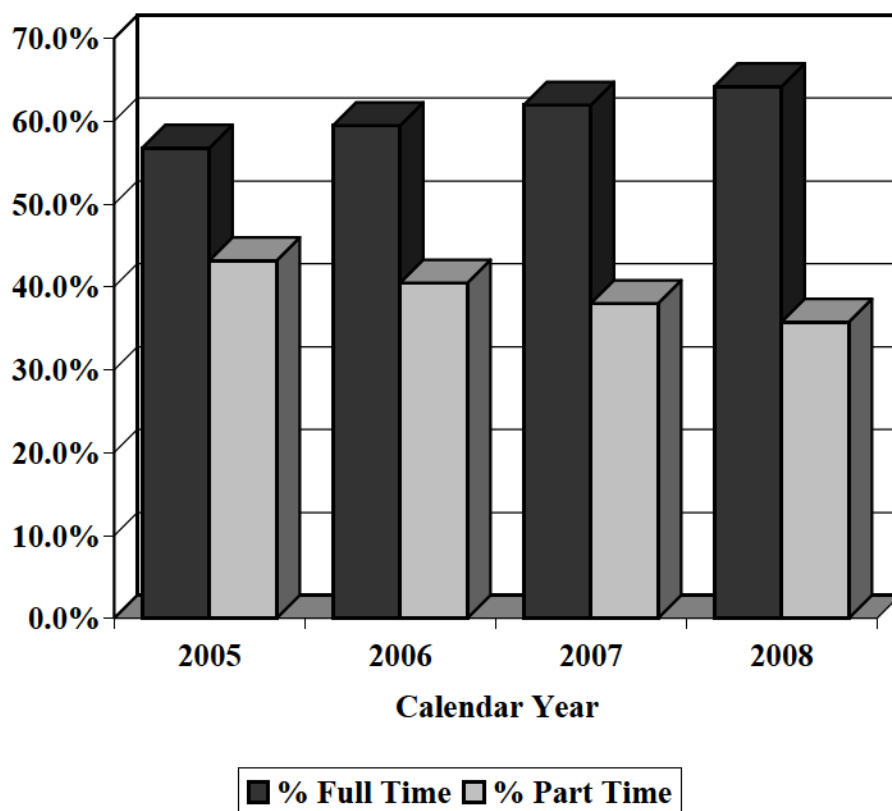
Graduate Headcount Enrollment



Undergraduate Enrollment by FT/PT Status

| As a Percent of Undergraduates | | | | | | |
|--------------------------------|----------------|----------------|----------------|----------------|----------------|--------------------|
| | Spring 2005 | Spring 2006 | Spring 2007 | Spring 2008 | Spring 2009 | 5 Year % Change |
| % Full Time | 56.8% | 59.5% | 62.0% | 64.2% | 66.9% | 17.8% |
| % Part Time | 43.2% | 40.5% | 38.0% | 35.8% | 33.1% | -23.4% |

Undergraduate FT/PT Enrollment

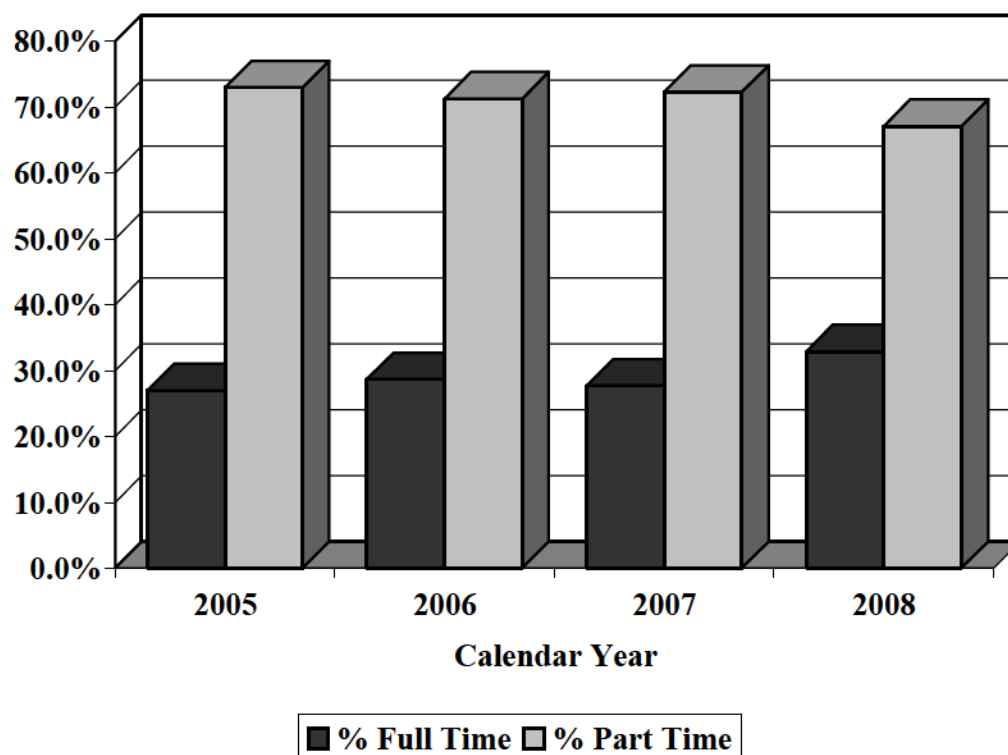


Note: Full-Time undergraduates are enrolled for 12 SCH or more and part-time undergraduates for less than 12 SCH.

Graduate Enrollment by FT/PT Status

| As a Percent of Graduates | | | | | | |
|---------------------------|----------------|----------------|----------------|----------------|----------------|--------------------|
| | Spring 2005 | Spring 2006 | Spring 2007 | Spring 2008 | Spring 2009 | 5 Year % Change |
| % Full Time | 27.0% | 28.7% | 27.7% | 32.9% | 33.6% | 24.4% |
| % Part Time | 73.0% | 71.3% | 72.3% | 67.1% | 66.4% | -9.0% |

Graduate FT/PT Enrollment

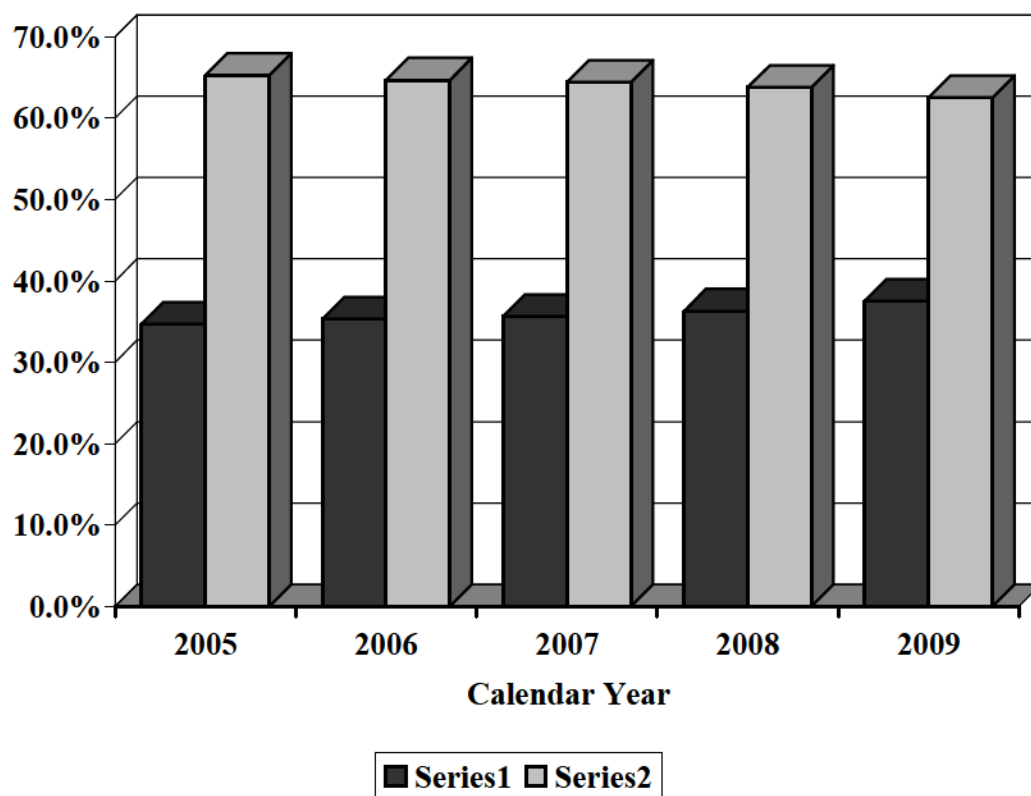


Note: Full-time graduate students are enrolled for 9 SCH and part-time graduates for less than 9 SCH.

Undergraduate Enrollment by Ethnic Group

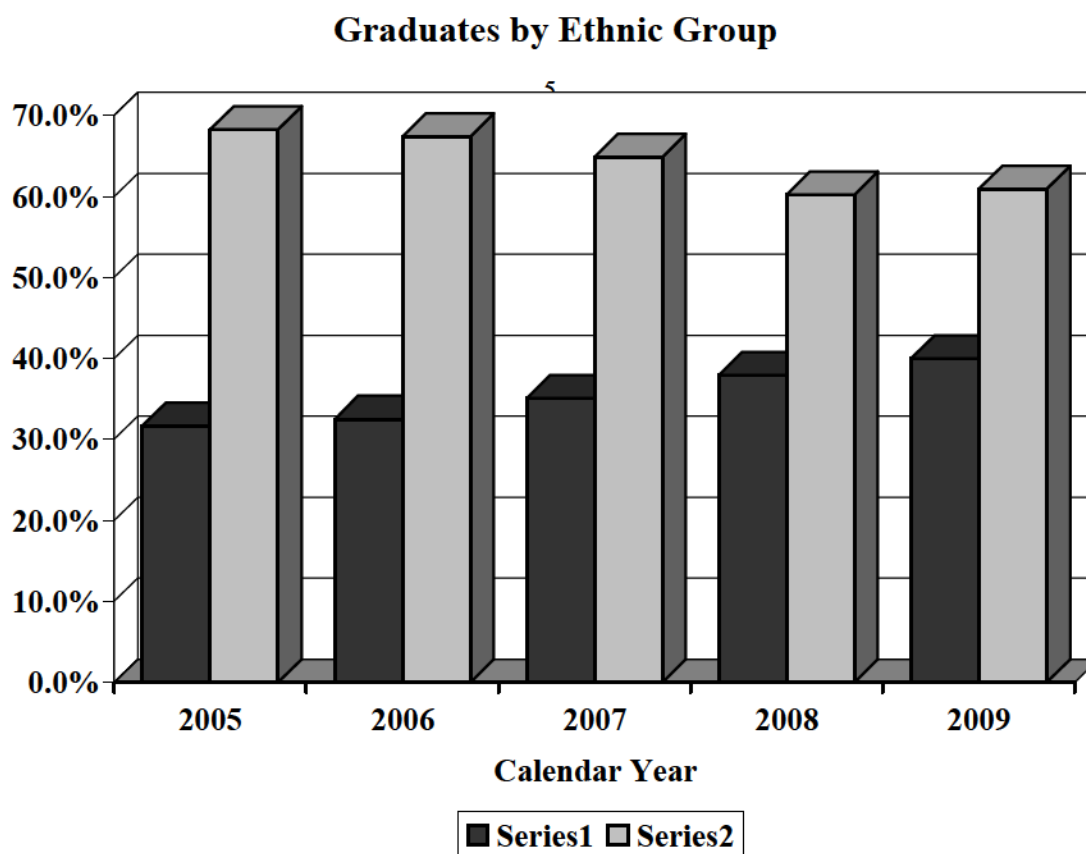
| As a Percent of Undergraduates | | | | | | |
|--------------------------------|----------------|----------------|----------------|----------------|----------------|--------------------|
| | Spring 2005 | Spring 2006 | Spring 2007 | Spring 2008 | Spring 2009 | 5 Year % Change |
| Amer. Indian/Alaskan | 0.3% | 0.4% | 0.4% | 0.4% | 0.4% | 33.3% |
| Asian/Pacific Islander | 3.1% | 3.2% | 3.2% | 3.4% | 3.8% | 22.6% |
| Black/Non-Hispanic | 22.0% | 22.2% | 22.2% | 22.2% | 22.3% | 1.4% |
| Hispanic | 2.6% | 3.6% | 3.9% | 3.8% | 3.8% | 46.2% |
| Multiracial | 6.7% | 5.9% | 5.9% | 6.5% | 7.2% | 7.5% |
| Total Minority | 34.7% | 35.3% | 35.6% | 36.3% | 37.5% | 8.1% |
| White/Non-Hispanic | 65.3% | 64.7% | 64.4% | 63.8% | 62.5% | -4.3% |

Undergraduates by Ethnic Group



Graduate Enrollment by Ethnic Group

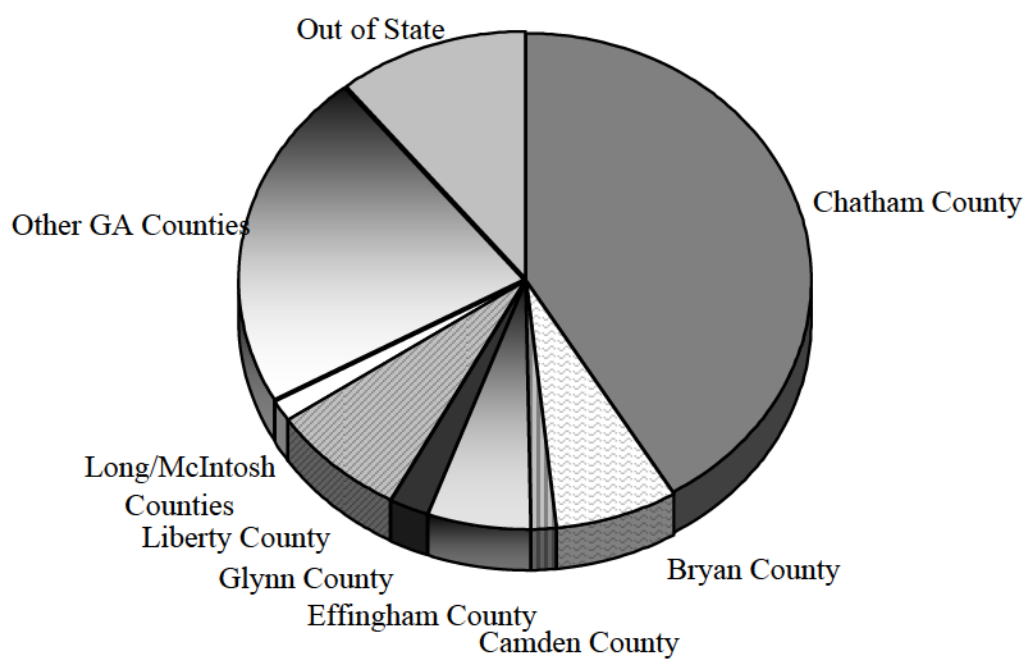
| As a Percent of Graduates | | | | | | |
|-------------------------------|----------------|----------------|----------------|----------------|----------------|--------------------|
| | Spring 2005 | Spring 2006 | Spring 2007 | Spring 2008 | Spring 2009 | 5 Year % Change |
| Amer. Indian/Alaskan | 0.2% | 0.1% | 0.2% | 0.4% | 0.2% | 0.0% |
| Asian/Pacific Islander | 1.7% | 2.4% | 2.0% | 1.9% | 1.2% | -29.4% |
| Black/Non-Hispanic | 26.3% | 26.8% | 29.0% | 27.7% | 28.0% | 6.5% |
| Hispanic | 1.4% | 1.1% | 0.8% | 1.7% | 2.0% | 42.9% |
| Multiracial | 2.1% | 2.1% | 3.1% | 6.3% | 8.6% | 309.5% |
| Total Minority | 31.7% | 32.5% | 35.1% | 38.0% | 40.0% | 26.2% |
| White/Non-Hispanic | 68.3% | 67.4% | 64.9% | 60.2% | 60.9% | -10.8% |



Undergraduate Enrollment by County of Origin

| As Percentage of Undergraduates | | | | | | |
|---------------------------------|----------------|----------------|----------------|----------------|----------------|--------------------|
| | Spring 2005 | Spring 2006 | Spring 2007 | Spring 2008 | Spring 2009 | 5 Year % Change |
| Chatham County | 47.1% | 43.7% | 42.5% | 41.4% | 41.4% | -12.1% |
| Bryan County | 6.8% | 6.5% | 7.0% | 7.3% | 6.9% | 1.5% |
| Camden County | 1.6% | 1.5% | 1.4% | 1.6% | 1.3% | -18.8% |
| Effingham County | 6.7% | 5.7% | 6.1% | 5.8% | 5.9% | -11.9% |
| Glynn County | 3.3% | 2.6% | 2.7% | 2.3% | 2.4% | -27.3% |
| Liberty County | 8.5% | 9.4% | 9.3% | 8.8% | 7.7% | -9.4% |
| Long/McIntosh Counties | 0.5% | 1.0% | 1.1% | 1.2% | 1.3% | 160.0% |
| Other GA Counties | 14.0% | 19.3% | 28.6% | 20.9% | 22.2% | 58.6% |
| Out of State | 11.5% | 10.3% | 1.3% | 10.7% | 10.9% | -5.2% |

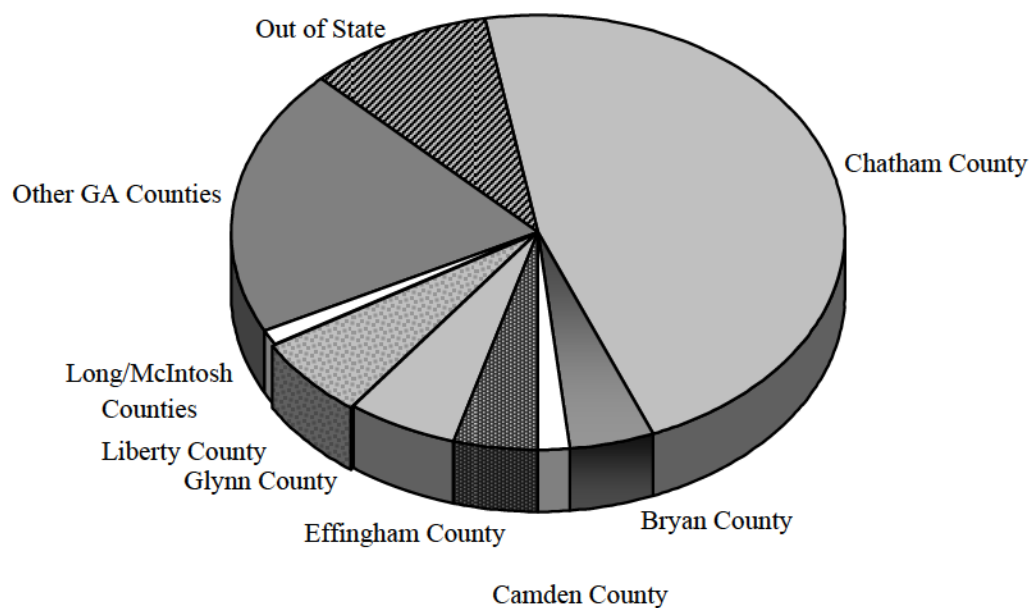
Undergraduate Enrollment by County of Origin



Graduate Enrollment by County of Origin

| By Percentage of Graduates | | | | | | |
|----------------------------|----------------|----------------|----------------|----------------|----------------|--------------------|
| | Spring 2005 | Spring 2006 | Spring 2007 | Spring 2008 | Spring 2009 | 5 Year % Change |
| Chatham County | 43.0% | 41.8% | 40.0% | 43.4% | 46.7% | 8.6% |
| Bryan County | 3.0% | 3.0% | 4.4% | 4.6% | 4.4% | 46.7% |
| Camden County | 1.5% | 2.1% | 1.1% | 1.9% | 1.6% | 6.7% |
| Effingham County | 2.8% | 2.5% | 3.6% | 3.7% | 4.6% | 64.3% |
| Glynn County | 5.4% | 4.2% | 3.8% | 5.2% | 5.8% | 7.4% |
| Liberty County | 8.0% | 7.8% | 6.1% | 6.7% | 6.0% | -25.0% |
| Long/McIntosh Counties | 1.0% | 1.1% | 1.0% | 1.4% | 1.3% | 30.0% |
| Other GA Counties | 16.9% | 21.0% | 24.8% | 20.9% | 19.9% | 17.8% |
| Out of State | 18.4% | 16.5% | 15.2% | 12.2% | 9.7% | -47.3% |

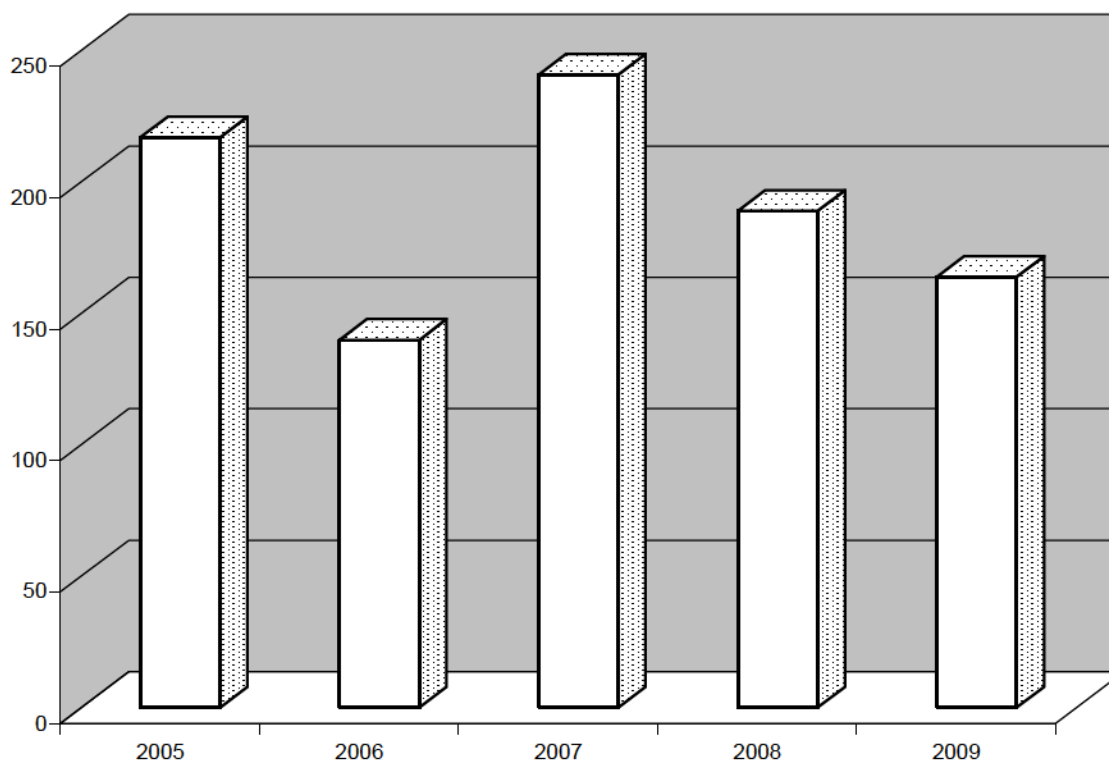
Graduate Enrollment by County of Origin



Learning Support Enrollment

| Enrollment | | | | | | | |
|------------------|----------------|----------------|----------------|----------------|----------------|--------------------|--------------------|
| | Spring 2005 | Spring 2006 | Spring 2007 | Spring 2008 | Spring 2009 | 5 Year # Change | 5 Year % Change |
| Learning Support | 217 | 140 | 241 | 189 | 164 | -53 | -24.4% |
| # Change | | -77 | 101 | -52 | -25 | | |
| % Change | | -35.5% | 72.1% | -21.6% | -13.2% | | |

Learning Support Enrollment



Note: Learning Support enrollment numbers include voluntary LS students.

Graduate & Undergraduate Student Credit Hours by College and University

| Spring 2009 Credit Hours | | | | | |
|---|-------------------|--------------|---------------|--------------------|-----------------------|
| | Undergraduate SCH | Graduate SCH | Total SCH | Percent of College | Percent of University |
| Early Childhood Education | 1,788 | 1,464 | 3,252 | 30.6% | 4.1% |
| Health & Physical Education | 2,780 | 0 | 2,780 | 26.2% | 3.5% |
| Middle & Secondary Education | 1,115 | 769 | 1,884 | 17.7% | 2.4% |
| Special & Adult Education | 1,288 | 1,414 | 2,702 | 25.4% | 3.4% |
| Total: College of Education | 6,971 | 3,647 | 10,618 | 100.0% | 13.4% |
| Communication Sciences & Disorders | 216 | 138 | 354 | 2.8% | 0.4% |
| Dental Hygiene | 535 | 0 | 535 | 4.2% | 0.7% |
| Health Science | 2,089 | 1,109 | 3,198 | 25.3% | 4.0% |
| Medical Technology | 796 | 0 | 796 | 6.3% | 1.0% |
| Nursing | 4,231 | 240 | 4,471 | 35.4% | 5.6% |
| Physical Therapy | 89 | 972 | 1,061 | 8.4% | 1.3% |
| Radiologic Sciences | 1,497 | 0 | 1,497 | 11.9% | 1.9% |
| Respiratory Therapy | 711 | 0 | 711 | 5.6% | 0.9% |
| Total: College of Health Professions | 10,164 | 2,459 | 12,623 | 100.0% | 15.9% |
| Art, Music, & Theatre | 5,021 | 36 | 5,057 | 17.3% | 6.4% |
| CJ, Social, & Political Science | 4,944 | 99 | 5,043 | 17.3% | 6.4% |
| Economics | 1,401 | 6 | 1,407 | 4.8% | 1.8% |
| History | 6,309 | 130 | 6,439 | 22.0% | 8.1% |
| Interdisciplinary Studies | 2,594 | 15 | 2,609 | 8.9% | 3.3% |
| Languages, Literature, & Philosophy | 8,541 | 126 | 8,667 | 29.7% | 10.9% |
| Total: College of Liberal Arts | 28,810 | 412 | 29,222 | 100.0% | 36.8% |
| Biology | 7,279 | 0 | 7,279 | 30.9% | 9.2% |
| Chemistry & Physics | 4,665 | 0 | 4,665 | 19.8% | 5.9% |
| Computer Science | 1,038 | 112 | 1,150 | 4.9% | 1.4% |
| Engineering Studies | 660 | | 660 | 2.8% | 0.8% |
| Information Technology | 847 | | 847 | 3.6% | 1.1% |
| Mathematics | 6,233 | 30 | 6,263 | 26.6% | 7.9% |
| Psychology | 2,664 | 27 | 2,691 | 11.4% | 3.4% |
| Total: College of Science and Technology | 23,386 | 169 | 23,555 | 100.0% | 29.7% |
| AASU 1101 | 102 | 0 | 102 | | 0.1% |
| Military/Naval Science | 102 | 0 | 102 | | 0.1% |
| Criminal Justice Training | 3,144 | 0 | 3,144 | | 4.0% |
| Total: Other | 3,348 | 0 | 3,348 | | 4.2% |
| Total: AASU | | | 79,366 | | 100.0% |

A pie chart illustrating the distribution of students across five fields of study. The largest segment is Liberal Arts at 37%, followed by Science and Technology at 30%, Health Professions at 16%, Education at 13%, and Other at 4%.

| Field of Study | Percentage |
|------------------------|------------|
| Liberal Arts | 37% |
| Science and Technology | 30% |
| Health Professions | 16% |
| Education | 13% |
| Other | 4% |

Spring Breakdown of University Credit Hours

| | Spring 2005 | Spring 2006 | Spring 2007 | Spring 2008 | Spring 2009 | 5 Year % Change |
|---|----------------|----------------|----------------|----------------|----------------|--------------------|
| Early Childhood Education | 4.1% | 4.4% | 4.9% | 4.1% | 4.1% | 0.0% |
| Health & Physical Education | 3.4% | 3.1% | 3.4% | 3.6% | 3.5% | 2.9% |
| Middle & Secondary Education | 3.0% | 2.5% | 2.0% | 2.4% | 2.4% | -20.0% |
| Special & Adult Education | 3.1% | 3.6% | 3.9% | 3.5% | 3.4% | 9.7% |
| Total: College of Education | 13.6% | 13.6% | 14.2% | 13.6% | 13.5% | -0.7% |
| % Change | | 0.0% | 0.6% | -0.6% | -0.1% | |
| Communication Sciences & Disorders | 0.5% | 0.5% | 0.5% | 0.5% | 0.4% | -20.0% |
| Dental Hygiene | 0.8% | 0.9% | 0.7% | 0.7% | 0.7% | -12.5% |
| Health Science | 3.3% | 3.4% | 3.8% | 3.8% | 4.0% | 21.2% |
| Medical Technology | 0.5% | 0.7% | 1.0% | 1.0% | 1.0% | 100.0% |
| Nursing | 5.2% | 5.3% | 4.4% | 5.0% | 5.6% | 7.7% |
| Physical Therapy | 0.8% | 0.9% | 0.7% | 1.1% | 1.3% | 62.5% |
| Radiologic Sciences | 1.3% | 1.3% | 2.1% | 2.2% | 1.9% | 146.2% |
| Respiratory Therapy | 0.6% | 0.8% | 0.8% | 0.9% | 0.9% | 50.0% |
| Total: College of Health Professions | 13.0% | 13.8% | 14.0% | 15.3% | 15.8% | 21.5% |
| % Change | | 0.8% | 0.2% | 1.3% | 0.5% | |
| Art, Music, & Theatre | 7.2% | 7.6% | 7.2% | 6.6% | 6.4% | -11.1% |
| CJ, Social, & Political Science | 6.1% | 5.8% | 6.4% | 5.9% | 6.4% | 4.9% |
| Economics | 2.0% | 2.3% | 2.0% | 1.9% | 1.8% | -10.0% |
| History | 8.8% | 8.4% | 8.9% | 8.2% | 8.1% | -8.0% |
| Interdisciplinary Studies | 0.3% | 0.5% | 0.8% | 2.6% | 3.3% | 1000.0% |
| Languages, Literature, & Philosophy | 11.7% | 11.6% | 11.8% | 11.1% | 10.9% | -6.8% |
| Total: College of Liberal Arts | 36.1% | 36.2% | 37.1% | 36.3% | 36.9% | 2.2% |
| % Change | | 0.1% | 0.9% | -0.8% | 0.6% | |
| Biology | 10.2% | 10.2% | 10.9% | 10.7% | 9.2% | -9.8% |
| Chemistry & Physics | 5.7% | 6.2% | 6.0% | 6.5% | 5.9% | 3.5% |
| Computer Science | 2.6% | 2.4% | 1.7% | 1.7% | 1.4% | -46.2% |
| Engineering Studies | 0.7% | 0.6% | 0.7% | 0.8% | 0.8% | 14.3% |
| Information Technology | 0.8% | 0.8% | 1.3% | 1.2% | 1.1% | 37.5% |
| Mathematics | 9.4% | 8.9% | 8.8% | 8.7% | 7.9% | -16.0% |
| Psychology | 4.2% | 4.0% | 4.2% | 3.8% | 3.4% | -19.0% |
| Total: School of Science and Techonology | 33.6% | 33.1% | 33.6% | 33.4% | 29.7% | -11.6% |
| % Change | | -0.5% | 0.5% | -0.2% | -3.7% | |
| AASU 1101 | 0.1% | 0.1% | 0.1% | 0.0% | 0.1% | 0.0% |
| % Change | | 0.0% | 0.1% | 0.1% | 0.1% | |
| Law Enforcement Training Center | 0.1% | 0.1% | 0.1% | 1.3% | 4.0% | 3900.0% |
| % Change | | 0.0% | -0.2% | -0.2% | 2.7% | |
| Military/Naval Science | 4.2% | 0.9% | 0.9% | 0.1% | 0.1% | -97.6% |
| % Change | | -3.3% | 0.0% | 0.0% | 0.0% | |

* Departmental changes were made which would result in inappropriate comparison

Note: Totals may not equal 100% due to rounding.

Departmental Productivity Ratios - Based on Proposed FY08 Budget

| | Spring 2009 SCH | % University SCHs (A) | Fund Sources | | | % General Funds (B) | Productivity Ratio (Gen.)* (A)/(B) | Total Budget | % Total Budget |
|---------------------------------------|--------------------|-----------------------------|---------------------|--|--------------------------------------|---------------------------|--|---------------------|-------------------|
| | | | General Fund* | Special Initiatives/ Lottery Funds | Sponsored/ Research Consortium | | | | |
| Early Childhood Ed. | 3,252 | 4.7% | \$1,063,643 | \$0 | \$0 | 4.0% | 1.18 | \$1,063,643 | 3.8% |
| Health & Physical Ed. | 2,780 | 3.7% | \$786,557 | \$0 | \$0 | 2.9% | 1.26 | \$786,557 | 2.8% |
| Middle & Secondary Ed. | 1,884 | 2.2% | \$994,203 | \$0 | \$0 | 3.7% | 0.59 | \$994,203 | 3.5% |
| Special & Adult Ed. | 2,702 | 3.2% | \$905,782 | \$0 | \$0 | 3.4% | 0.95 | \$905,782 | 3.2% |
| Total Education | 10,618 | 13.8% | \$3,750,185 | \$0 | \$0 | 14.0% | 0.99 | \$3,750,185 | 13.4% |
| Comm. Disorders & Sci. | 354 | 0.6% | \$372,542 | \$0 | \$0 | 1.4% | 0.43 | \$372,542 | 1.3% |
| Dental Hygiene | 535 | 0.7% | \$865,168 | \$0 | \$0 | 3.2% | 0.22 | \$865,168 | 3.1% |
| Health Sciences | 3,198 | 3.9% | \$1,343,630 | \$0 | \$53,605 | 5.0% | 0.78 | \$1,397,235 | 5.0% |
| Medical Technology | 796 | 1.5% | \$422,248 | \$0 | \$0 | 1.6% | 0.95 | \$422,248 | 1.5% |
| Nursing | 4,471 | 4.5% | \$2,015,223 | \$0 | \$0 | 7.5% | 0.60 | \$2,015,223 | 7.2% |
| Physical Therapy | 1,061 | 1.4% | \$745,746 | \$0 | \$0 | 2.8% | 0.50 | \$745,746 | 2.7% |
| Radiologic Sciences | 1,497 | 1.8% | \$757,318 | \$65,925 | \$163,134 | 2.8% | 0.64 | \$823,243 | 2.9% |
| Respiratory Therapy | 711 | 1.0% | \$391,413 | \$0 | \$0 | 1.5% | 0.66 | \$391,413 | 1.4% |
| Total Health Professions | 12,623 | 15.4% | \$6,913,288 | \$65,925 | \$216,739 | 25.8% | 0.60 | \$7,195,952 | 25.6% |
| Art, Music & Theatre | 5,057 | 7.2% | \$1,656,020 | \$0 | \$0 | 6.2% | 1.16 | \$1,656,020 | 5.9% |
| C.J., Social & Political Sci. | 5,043 | 6.0% | \$1,135,461 | \$0 | \$0 | 4.2% | 1.42 | \$1,135,461 | 4.0% |
| Economics | 1,407 | 2.0% | \$565,261 | \$0 | \$57,738 | 2.1% | 0.95 | \$622,999 | 2.2% |
| History | 6,439 | 8.2% | \$1,180,731 | \$0 | \$0 | 4.4% | 1.86 | \$1,180,731 | 4.2% |
| Lang., Lit., and Phil. | 8,667 | 12.9% | \$2,309,227 | \$0 | \$9,507 | 8.6% | 1.50 | \$2,318,734 | 8.3% |
| Total Liberal Arts | 26,613 | 36.3% | \$6,846,700 | \$0 | \$67,245 | 25.6% | 1.42 | \$6,913,945 | 24.6% |
| Biology | 7,279 | 10.1% | \$1,380,552 | \$0 | \$0 | 5.2% | 1.96 | \$1,380,552 | 4.9% |
| Chemistry & Physics | 4,665 | 6.0% | \$1,513,994 | \$0 | \$0 | 5.7% | 1.06 | \$1,513,994 | 5.4% |
| Computer Science | 1,150 | 1.6% | \$1,512,395 | \$0 | \$534,019 | 5.6% | 0.28 | \$2,046,414 | 7.3% |
| Engineering Studies | 660 | 0.7% | \$469,803 | \$0 | \$0 | 1.8% | 0.40 | \$469,803 | 1.7% |
| Information Technology | 847 | 1.2% | \$787,474 | \$0 | \$48,540 | 2.9% | 0.41 | \$836,014 | 3.0% |
| Mathematics | 6,263 | 9.4% | \$1,430,657 | \$0 | \$349,230 | 5.3% | 1.76 | \$1,779,887 | 6.3% |
| Psychology | 2,691 | 3.7% | \$830,069 | \$0 | \$0 | 3.1% | 1.19 | \$830,069 | 3.0% |
| Total Science & Technology | 23,555 | 32.7% | \$7,924,944 | \$0 | \$931,789 | 29.6% | 1.10 | \$8,856,733 | 31.6% |
| AASU 1101 | 102 | 2.0% | \$1,299,917 | \$0 | \$0 | 4.9% | 0.41 | \$1,299,917 | 4.6% |
| Military Science | 102 | 0.1% | \$44,513 | \$0 | \$0 | 0.2% | 0.60 | \$44,513 | 0.2% |
| Total AASU | 73,613 | 100% | \$26,779,547 | \$65,925 | \$1,215,773 | 100% | 1.00 | \$28,061,245 | 100.0% |

Note: Does not include Interdisciplinary Studies or Law Enforcement Training Center credit hours.

*General funds consist of personal services, travel, operating supplies and expense, and equipment and/or books.

Courses by Level, Section, and Type of Instruction

DEPARTMENT - LEVEL SUBJECT TYPE #SECTIONS # ENROLLED AVG. SIZE

COLLEGE OF EDUCATION

Early Childhood Education

| | | | | | |
|------------------|------|---------|----|-----|------|
| Lower Level | ECUG | Lecture | 3 | 89 | 29.7 |
| Upper Level | ECUG | Lab | 7 | 37 | 5.3 |
| | ECUG | Lecture | 12 | 285 | 23.8 |
| | ECUG | Other | 2 | 27 | 13.5 |
| Graduate Level | ECMT | Lab | 3 | 11 | 3.7 |
| | ECEG | Lecture | 6 | 59 | 9.8 |
| | ECMT | Lecture | 4 | 106 | 26.5 |
| | EDUC | Lecture | 3 | 82 | 27.3 |
| | RDEN | Lecture | 6 | 124 | 20.7 |
| | | | 19 | 371 | 19.5 |
| Department Total | | | 46 | 820 | 17.8 |

Health and Physical Education

| | | | | | |
|------------------|------|---------|----|------|------|
| Lower Level | PEBC | Lab | 21 | 336 | 16.0 |
| | EDUC | Lecture | 4 | 131 | 32.8 |
| | PEAT | Lecture | 1 | 20 | 20.0 |
| | PEBC | Lecture | 7 | 226 | 32.3 |
| | PEEC | Lecture | 2 | 39 | 19.5 |
| | PEHM | Lecture | 2 | 62 | 31.0 |
| | | | 16 | 478 | 29.9 |
| Upper Level | PEEC | Lab | 1 | 6 | 6.0 |
| | PEHM | Lab | 1 | 9 | 9.0 |
| | | | 2 | 15 | 7.5 |
| | PEEC | Lecture | 3 | 59 | 19.7 |
| | PEHM | Lecture | 7 | 162 | 23.1 |
| | | | 10 | 221 | 22.1 |
| Department Total | | | 49 | 1050 | 21.4 |

DEPARTMENT - LEVEL SUBJECT TYPE #SECTIONS # ENROLLED AVG. SIZE

Middle and Secondary Education

| | | | | | |
|------------------|------|---------|----|-----|------|
| Lower Level | EDUC | Lecture | 3 | 87 | 29.0 |
| Upper Level | MGSE | Lab | 5 | 25 | 5.0 |
| | EDUC | Lecture | 5 | 100 | 20.0 |
| | MGSE | Lecture | 7 | 85 | 12.1 |
| | | | 12 | 185 | 15.4 |
| | MGSE | Other | 2 | 6 | 3.0 |
| Graduate | MGED | Lab | 3 | 12 | 4.0 |
| | EDUC | Lecture | 4 | 79 | 19.8 |
| | FOUN | Lecture | 2 | 27 | 13.5 |
| | MGED | Lecture | 1 | 2 | 2.0 |
| | MGSE | Lecture | 7 | 108 | 15.4 |
| | SCED | Lecture | 1 | 11 | 11.0 |
| | | | 15 | 227 | 15.1 |
| Department Total | | | 40 | 542 | 13.6 |

Special and Adult Education

| | | | | | |
|------------------|------|---------|----|-----|------|
| Lower Level | CEUG | Lecture | 3 | 71 | 23.7 |
| | READ | Lecture | 1 | 13 | 13.0 |
| | RGTR | Lecture | 2 | 43 | 21.5 |
| | SPED | Lecture | 2 | 19 | 9.5 |
| | | | 8 | 146 | 18.3 |
| Upper Level | SPED | Lab | 2 | 16 | 8.0 |
| | CEUG | Lecture | 2 | 40 | 20.0 |
| | EDUC | Lecture | 10 | 160 | 16.0 |
| | SPED | Lecture | 5 | 59 | 11.8 |
| | | | 17 | 259 | 15.2 |
| Graduate | ADED | Lab | 1 | 15 | 15.0 |
| | EEXE | Lab | 1 | 12 | 12.0 |
| | | | 2 | 27 | 13.5 |
| | ADED | Lecture | 5 | 72 | 14.4 |
| | EDUC | Lecture | 10 | 163 | 16.3 |
| | EEXE | Lecture | 6 | 127 | 21.2 |
| | FOUN | Lecture | 1 | 14 | 14.0 |
| | HRVD | Lecture | 1 | 10 | 10.0 |
| | | | 23 | 386 | 16.8 |
| Department Total | | | 52 | 834 | 16.0 |

COLLEGE OF HEALTH PROFESSIONS**Communication Sciences and Disorders**

| | | | | | |
|------------------|------|---------|---|----|------|
| Lower Level | CSDS | Lecture | 2 | 29 | 14.5 |
| Upper Level | CSDS | Lecture | 3 | 25 | 8.3 |
| | CSDS | Other | 1 | 9 | 9.0 |
| Graduate | CSDS | Lecture | 1 | 7 | 7.0 |
| | CSDS | Other | 1 | 7 | 7.0 |
| Department Total | | | 8 | 77 | 9.6 |

| <u>DEPARTMENT - LEVEL</u> | <u>SUBJECT</u> | <u>TYPE</u> | <u>#SECTIONS</u> | <u># ENROLLED</u> | <u>AVG. SIZE</u> |
|---------------------------|----------------|-------------|------------------|-------------------|------------------|
|---------------------------|----------------|-------------|------------------|-------------------|------------------|

Dental Hygiene

| | | | | | |
|------------------|------|---------|---|-----|------|
| Lower Level | DHYG | Lab | 4 | 63 | 15.8 |
| | DHYG | Lecture | 4 | 70 | 17.5 |
| Upper Level | DHED | Lecture | 1 | 7 | 7.0 |
| Department Total | | | 8 | 133 | 16.6 |

Health Science

| | | | | | |
|------------------|------|---------|----|-----|------|
| Lower Level | HSCC | Lecture | 3 | 83 | 27.7 |
| | HSCP | Lecture | 1 | 20 | 20.0 |
| | | | 4 | 103 | 25.8 |
| Upper Level | GERO | Lecture | 1 | 38 | 38.0 |
| | HSCA | Lecture | 5 | 130 | 26.0 |
| | HSCC | Lecture | 7 | 195 | 27.9 |
| | HSCP | Lecture | 1 | 32 | 32.0 |
| | MHSA | Lecture | 1 | 25 | 25.0 |
| | PUBH | Lecture | 3 | 66 | 22.0 |
| | SMED | Lecture | 4 | 48 | 12.0 |
| | | | 22 | 534 | 24.3 |
| | GERO | Other | 1 | 1 | 1.0 |
| | HSCA | Other | 1 | 1 | 1.0 |
| | HSCC | Other | 2 | 11 | 5.5 |
| | HSCP | Other | 4 | 16 | 4.0 |
| | SMED | Other | 1 | 1 | 1.0 |
| | | | 9 | 30 | 3.3 |
| Graduate | GERO | Lecture | 1 | 5 | 5.0 |
| | MHSA | Lecture | 10 | 86 | 8.6 |
| | PUBH | Lecture | 15 | 171 | 11.4 |
| | SMED | Lecture | 4 | 30 | 7.5 |
| | | | 30 | 292 | 9.7 |
| | MHSA | Other | 3 | 6 | 2.0 |
| | PUBH | Other | 2 | 24 | 12.0 |
| | SMED | Other | 2 | 5 | 2.5 |
| | | | 7 | 35 | 5.0 |
| | | | 72 | 994 | 13.8 |
| Department Total | | | | | |

Medical Technology

| | | | | | |
|------------------|------|---------|---|-----|------|
| Upper Level | MEDT | Lab | 3 | 46 | 15.3 |
| | MEDT | Lecture | 3 | 50 | 16.7 |
| | MEDT | Other | 2 | 39 | 19.5 |
| Department Total | | | 8 | 135 | 16.9 |

| <u>DEPARTMENT - LEVEL</u> | <u>SUBJECT</u> | <u>TYPE</u> | <u>#SECTIONS</u> | <u># ENROLLED</u> | <u>AVG. SIZE</u> |
|---------------------------|----------------|-------------|------------------|-------------------|------------------|
|---------------------------|----------------|-------------|------------------|-------------------|------------------|

Nursing

| | | | | | |
|------------------|------|---------|----|------|------|
| Upper Level | NURS | Lab | 9 | 71 | 7.9 |
| | NURS | Lecture | 22 | 971 | 44.1 |
| | NURS | Other | 6 | 148 | 24.7 |
| Graduate | NURS | Lab | 4 | 14 | 3.5 |
| | NURS | Lecture | 5 | 57 | 11.4 |
| | NURS | Other | 4 | 15 | 3.8 |
| Department Total | | | 50 | 1276 | 25.5 |

Physical Therapy

| | | | | | |
|------------------|------|---------|---|-----|------|
| Upper Level | RHAB | Lecture | 1 | 24 | 24.0 |
| | RHAB | Other | 2 | 6 | 3.0 |
| Graduate | PHTH | Lecture | 3 | 57 | 19.0 |
| | PHTH | Other | 3 | 35 | 11.7 |
| Department Total | | | 9 | 122 | 13.6 |

Radiologic Sciences

| | | | | | |
|------------------|------|---------|----|-----|------|
| Lower Level | HLPR | Lecture | 4 | 116 | 29.0 |
| Upper Level | RADS | Lab | 6 | 75 | 12.5 |
| | RADS | Lecture | 18 | 317 | 17.6 |
| | RADS | Other | 8 | 71 | 8.9 |
| Department Total | | | 36 | 579 | 16.1 |

Respiratory Therapy

| | | | | | |
|------------------|------|---------|----|-----|------|
| Lower Level | RESP | Lecture | 2 | 53 | 26.5 |
| Upper Level | RESP | Lab | 2 | 20 | 10.0 |
| | RESP | Lecture | 4 | 64 | 16.0 |
| | RESP | Other | 4 | 33 | 8.3 |
| Department Total | | | 12 | 170 | 14.2 |

DEPARTMENT - LEVEL SUBJECT TYPE #SECTIONS # ENROLLED AVG. SIZE

COLLEGE OF LIBERAL ARTS

Art, Music, and Theatre

| | | | | | |
|------------------|------|---------|------------|-------------|-------------|
| Lower Level | MUSC | Lab | 14 | 173 | 12.4 |
| | THEA | Lab | 1 | 24 | 24.0 |
| | | | 15 | 197 | 13.1 |
| Upper Level | ARTS | Lecture | 18 | 433 | 24.1 |
| | COMM | Lecture | 5 | 131 | 26.2 |
| | MUSC | Lecture | 11 | 240 | 21.8 |
| | THEA | Lecture | 8 | 134 | 16.8 |
| | | | 42 | 938 | 22.3 |
| | ARTS | Lab | 5 | 23 | 4.6 |
| | MUSC | Lab | 6 | 31 | 5.2 |
| | THEA | Lab | 2 | 9 | 4.5 |
| | | | 13 | 63 | 4.8 |
| | ARTS | Lecture | 16 | 202 | 12.6 |
| Graduate Level | COMM | Lecture | 1 | 18 | 18.0 |
| | MUSC | Lecture | 6 | 35 | 5.8 |
| | THEA | Lecture | 9 | 124 | 13.8 |
| | | | 32 | 379 | 11.8 |
| | ARTS | Other | 1 | 3 | 3.0 |
| | THEA | Other | 3 | 6 | 2.0 |
| | | | 4 | 9 | 2.3 |
| | ARTS | Lecture | 3 | 8 | 2.7 |
| | COMM | Lecture | 1 | 3 | 3.0 |
| | | | 4 | 11 | 2.8 |
| Department Total | ARTS | Other | 1 | 2 | 2.0 |
| | | | 111 | 1599 | 14.4 |

Criminal Justice, Political Science, and Social Science

| | | | | | |
|------------------|------|---------|-----------|-------------|-------------|
| Lower Level | ANTH | Lecture | 1 | 43 | 43.0 |
| | CRJU | Lecture | 12 | 245 | 20.4 |
| | POLS | Lecture | 10 | 308 | 30.8 |
| | SOCI | Lecture | 6 | 250 | 41.7 |
| | | | 29 | 846 | 29.2 |
| Upper Level | ANTH | Lecture | 1 | 20 | 20.0 |
| | CRJU | Lecture | 10 | 161 | 16.1 |
| | POLS | Lecture | 8 | 114 | 14.3 |
| | SOCI | Lecture | 2 | 39 | 19.5 |
| | | | 21 | 334 | 15.9 |
| | CRJU | Other | 3 | 14 | 4.7 |
| | POLS | Other | 2 | 3 | 1.5 |
| | | | 5 | 17 | 3.4 |
| Graduate | CRJU | Lecture | 4 | 17 | 4.3 |
| | POLS | Lecture | 2 | 3 | 1.5 |
| | SOCI | Lecture | 1 | 8 | 8.0 |
| | | | 7 | 28 | 4.0 |
| | CRJU | Other | 2 | 3 | 1.5 |
| Department Total | | | 64 | 1228 | 19.2 |

| <u>DEPARTMENT - LEVEL</u> | <u>SUBJECT</u> | <u>TYPE</u> | <u>#SECTIONS</u> | <u># ENROLLED</u> | <u>AVG. SIZE</u> |
|--|----------------|-------------|------------------|-------------------|------------------|
| Economics | | | | | |
| Lower Level | ACCT | Lecture | 1 | 12 | 12.0 |
| | ECON | Lecture | 8 | 243 | 30.4 |
| | | | 9 | 255 | 28.3 |
| Upper Level | ECON | Lecture | 8 | 122 | 15.3 |
| | ECON | Other | 1 | 1 | 1.0 |
| Graduate | ECON | Lecture | 1 | 2 | 2.0 |
| Department Total | | | 19 | 380 | 20.0 |
| History | | | | | |
| Lower Level | EURO | Lecture | 1 | 22 | 22.0 |
| | GEOG | Lecture | 3 | 130 | 43.3 |
| | HIST | Lecture | 23 | 907 | 39.4 |
| | | | 27 | 1059 | 39.2 |
| Upper Level | HIST | Lecture | 9 | 207 | 23.0 |
| Graduate | HIST | Lecture | 5 | 32 | 6.4 |
| | HIST | Other | 2 | 4 | 2.0 |
| Department Total | | | 43 | 1302 | 30.3 |
| Languages, Literature, & Philosophy | | | | | |
| Lower Level | ENGL | Lecture | 21 | 460 | 21.9 |
| | ETHC | Lecture | 2 | 126 | 63.0 |
| | FREN | Lecture | 3 | 51 | 17.0 |
| | GRMN | Lecture | 2 | 24 | 12.0 |
| | PHIL | Lecture | 7 | 216 | 30.9 |
| | RGTE | Lecture | 2 | 42 | 21.0 |
| | SPAN | Lecture | 11 | 235 | 21.4 |
| | | | 48 | 1154 | 24.0 |
| | | | | | |
| Upper Level | ENGL | Lecture | 14 | 282 | 20.1 |
| | FILM | Lecture | 2 | 46 | 23.0 |
| | FREN | Lecture | 1 | 10 | 10.0 |
| | JOUR | Lecture | 1 | 26 | 26.0 |
| | PHIL | Lecture | 2 | 51 | 25.5 |
| | SPAN | Lecture | 5 | 89 | 17.8 |
| | | | 25 | 504 | 20.2 |
| | | | | | |
| | | | | | |
| Graduate | ENGL | Other | 3 | 10 | 3.3 |
| | ENGL | Lecture | 6 | 33 | 5.5 |
| | PHIL | Lecture | 1 | 1 | 1.0 |
| | | | 7 | 34 | 4.9 |
| | ENGL | Other | 1 | 3 | 3.0 |
| | SPAN | Other | 1 | 6 | 6.0 |
| Department Total | | | 2 | 9 | 4.5 |
| | | | 85 | 1711 | 20.1 |

DEPARTMENT - LEVEL SUBJECT TYPE #SECTIONS # ENROLLED AVG. SIZE

COLLEGE OF SCIENCE AND TECHNOLOGY

Biology

| | | | | | |
|------------------|------|---------|-----------|-------------|-------------|
| Lower Level | BIOL | Lab | 14 | 304 | 21.7 |
| | ISCI | Lab | 2 | 34 | 17.0 |
| | | | 16 | 338 | 21.1 |
| | BIOL | Lecture | 23 | 970 | 42.2 |
| | ISCI | Lecture | 2 | 34 | 17.0 |
| | | | 25 | 1004 | 40.2 |
| Upper Level | BIOL | Lab | 9 | 145 | 16.1 |
| | BIOL | Lecture | 10 | 262 | 26.2 |
| | BIOL | Other | 2 | 12 | 6.0 |
| Department Total | | | 62 | 1761 | 28.4 |

Chemistry & Physics

| | | | | | |
|------------------|------|---------|-----------|-------------|-------------|
| Lower Level | CHEM | Lab | 10 | 179 | 17.9 |
| | ISCI | Lab | 2 | 40 | 20.0 |
| | PHSC | Lab | 1 | 30 | 30.0 |
| | PHYS | Lab | 5 | 128 | 25.6 |
| Upper Level | | | 18 | 377 | 20.9 |
| | ASTR | Lecture | 1 | 93 | 93.0 |
| | CHEM | Lecture | 16 | 487 | 30.4 |
| | GEOL | Lecture | 1 | 63 | 63.0 |
| | ISCI | Lecture | 2 | 40 | 20.0 |
| | PHSC | Lecture | 2 | 121 | 60.5 |
| | PHYS | Lecture | 4 | 127 | 43.0 |
| | SCIE | Lecture | 1 | 26 | 26.0 |
| | | | 27 | 957 | 35.4 |
| | CHEM | Lab | 5 | 39 | 7.8 |
| | PHYS | Lab | 2 | 9 | 4.5 |
| | | | 7 | 48 | 6.9 |
| | CHEM | Lecture | 8 | 89 | 11.1 |
| | METR | Lecture | 1 | 74 | 74.0 |
| | OCEA | Lecture | 2 | 56 | 28.0 |
| | PHYS | Lecture | 2 | 17 | 8.5 |
| | | | 13 | 236 | 18.2 |
| Department Total | | | 65 | 1618 | 24.9 |

Computer Science

| | | | | | |
|------------------|------|---------|-----------|------------|-------------|
| Lower Level | CSCI | Lecture | 9 | 173 | 19.2 |
| Upper Level | CSCI | Lab | 1 | 7 | 7.0 |
| | CSCI | Lecture | 7 | 68 | 9.7 |
| Graduate | CSCI | Lecture | 5 | 32 | 6.4 |
| | CSCI | Other | 1 | 8 | 8.0 |
| Department Total | | | 23 | 288 | 12.5 |

| <u>DEPARTMENT - LEVEL</u> | <u>SUBJECT</u> | <u>TYPE</u> | <u>#SECTIONS</u> | <u># ENROLLED</u> | <u>AVG. SIZE</u> |
|---------------------------|----------------|-------------|------------------|-------------------|------------------|
|---------------------------|----------------|-------------|------------------|-------------------|------------------|

Engineering Studies

| | | | | | |
|------------------|------|---------|---|-----|------|
| Lower Level | ENGR | Lab | 2 | 33 | 16.5 |
| | ENGR | Lecture | 7 | 146 | 20.9 |
| Upper Level | ENGR | Lecture | 3 | 30 | 10.0 |
| Department Total | | | 9 | 179 | 19.9 |

Information Technology

| | | | | | |
|------------------|------|---------|----|-----|------|
| Lower Level | ITEC | Lecture | 7 | 161 | 23.0 |
| | WBIT | Lecture | 3 | 8 | 2.7 |
| | | | 10 | 169 | 16.9 |
| Upper Level | ITEC | Lecture | 5 | 88 | 17.6 |
| | WBIT | Lecture | 3 | 11 | 3.7 |
| | | | 8 | 99 | 12.4 |
| | ITEC | Other | 1 | 1 | 1.0 |
| Department Total | | | 19 | 269 | 14.2 |

Mathematics

| | | | | | |
|------------------|------|---------|----|------|------|
| Lower Level | MATH | Lecture | 32 | 994 | 31.1 |
| Upper Level | MATH | Lab | 5 | 91 | 18.2 |
| | MATH | Lecture | 13 | 207 | 15.9 |
| Graduate | MAED | Lecture | 1 | 3 | 3.0 |
| | MATH | Lecture | 3 | 9 | 3.0 |
| | | | 4 | 12 | 3.0 |
| Department Total | | | 38 | 1088 | 28.6 |

Psychology

| | | | | | |
|------------------|------|---------|----|-----|------|
| Lower Level | PSYC | Lecture | 15 | 495 | 33.0 |
| Upper Level | PSYC | Lab | 1 | 10 | 10.0 |
| | PSYC | Lecture | 12 | 263 | 21.9 |
| | PSYC | Other | 1 | 3 | 3.0 |
| | PSYC | Lecture | 3 | 9 | 3.0 |
| Graduate | PSYC | Lecture | 3 | 9 | 3.0 |
| Department Total | | | 32 | 780 | 24.4 |

| <u>DEPARTMENT - LEVEL</u> | <u>SUBJECT</u> | <u>TYPE</u> | <u>#SECTIONS</u> | <u># ENROLLED</u> | <u>AVG. SIZE</u> |
|---------------------------|----------------|-------------|------------------|-------------------|------------------|
|---------------------------|----------------|-------------|------------------|-------------------|------------------|

Interdisciplinary Studies

| | | | | | |
|-------------|------|---------|-----------|------------|-------------|
| Lower Level | AASU | Lecture | 3 | 33 | 11 |
| | AFAS | Lecture | 1 | 17 | 17.0 |
| | GWST | Lecture | 4 | 136 | 34.0 |
| | HONS | Lecture | 2 | 37 | 18.5 |
| | HUMN | Lecture | 1 | 5 | 5.0 |
| | RELI | Lecture | 2 | 53 | 26.5 |
| | | | 13 | 281 | 21.6 |
| Upper Level | AFAS | Lecture | 1 | 1 | 1.0 |
| | GWST | Lecture | 2 | 4 | 2.0 |
| | | | 3 | 5 | 1.7 |
| Graduate | GWST | Lecture | 2 | 3 | 1.5 |
| | MALP | Lecture | 1 | 1 | 1.0 |
| | | | 3 | 4 | 1.3 |
| Total | | | 32 | 543 | 17.0 |

Law Enforcement Training Center

| | | | | | |
|-------|------|---------|-----------|------------|------------|
| | LETC | Lab | 5 | 35 | 7.0 |
| | LETC | Lecture | 7 | 37 | 5.3 |
| | LETC | Other | 7 | 42 | 6.0 |
| Total | | | 19 | 114 | 6.0 |

Military Science

| | | | | | |
|------------------|------|---------|-----------|------------|------------|
| Lower Level | MILS | Lab | 2 | 14 | 7.0 |
| | MILS | Lecture | 3 | 21 | 7.0 |
| | NSCI | Lecture | 1 | 1 | 1 |
| | | | 4 | 22 | 5.5 |
| Upper Level | MILS | Lab | 2 | 15 | 7.5 |
| | NSCI | Lab | 1 | 3 | 3.0 |
| | | | 3 | 18 | 6.0 |
| | MILS | Lecture | 2 | 15 | 7.5 |
| | NSCI | Lecture | 1 | 1 | 1.0 |
| | | | 3 | 16 | 5.3 |
| Department Total | | | 18 | 109 | 6.1 |