

Georgia Southern University

Georgia Southern Commons

Armstrong Women's Soccer Team Archives

Armstrong Women's Soccer Archives

2006

2006 AASU Women's Soccer Guide

Armstrong State University

Follow this and additional works at: <https://digitalcommons.georgiasouthern.edu/armstrong-soccer-wmn-team>

Recommended Citation

Armstrong State University, "2006 AASU Women's Soccer Guide" (2006). *Armstrong Women's Soccer Team Archives*. 11.

<https://digitalcommons.georgiasouthern.edu/armstrong-soccer-wmn-team/11>

This media guide is brought to you for free and open access by the Armstrong Women's Soccer Archives at Georgia Southern Commons. It has been accepted for inclusion in Armstrong Women's Soccer Team Archives by an authorized administrator of Georgia Southern Commons. For more information, please contact digitalcommons@georgiasouthern.edu.



**Senior Jessica
Chipple**

Armstrong Atlantic State 2006 Women's Soccer



**Senior Candice
Modlinski**



**Senior Donna
Cheyne**





2006 AASU Women's Soccer Squad. Standing (l-r): Head coach Eric Faulconer, Kristin Burton, Ginny Child, Shana Neves, Kayley Ralton, Jessica Chipple, Candice Modlinski, Emily Latner, Jamie Craine, Jennifer Brian, Donna Cheyne, Ashley Elam, Assistant coach Alison Clarke, Kneeling (l-r): Amaka Ofuani, Kim Van Houten, Holly Grulich, Lyndsi Stricklen, Tarra Kohler, Samantha Held, Lisa Gray, Erin Lariscy, Kristin Savoy, Alana Griner, Maggie Kennedy

2006 Armstrong Atlantic State University Pirate Women's Soccer Roster

#	Name	Yr.	Pos.	Ht.	Hometown/Previous School
1	Ginny Child	Fr.	M	5-8	Newnan, Ga. / Newnan HS
2	Donna Cheyne	Sr.	M	5-6	Elgin, Scotland / Thomas University
3	Candice Modlinski	Sr.	D	6-0	St. Charles, Ill. / St. Charles East HS
4	Kristin Savoy	Soph.	M/F	5-4	Woodsville, N.H. / Gardner Webb
5	Jennifer Brian	Soph.	D	5-7	St. Simons Island, Ga. / Frederica Academy
6	Amaka Ofuani	Fr.	F/M	5-6	Tallahassee, Fla. / Lincoln HS
8	Kayley Ralton	Fr.	D	5-7	Edinburgh, Scotland / Royal HS
10	Shana Neves	Soph.	F/M	5-7	Milton, Fla. / Pace HS
11	Kim Van Houten	Soph.	D/M	5-5	Pensacola, Fla. / West Florida
12	Lyndsi Stricklen	Soph.	F	5-3	Middleburg, Fla. / Ridgeview HS
13	Samantha Held	Fr.	GK	5-10	Green Cove Springs, Fla. / Clay HS
14	Jessica Chipple	Sr.	D	5-11	Hinesville, Ga. / Thomas University
15	Maggie Kennedy	Fr.	M	5-5	Abita Springs, La. / St. Scholastica
16	Emily Latner	Soph.	D/M	5-9	Pensacola, Fla. / Thomas University
17	Kristin Burton	Fr.	F	5-8	Ocala, Fla. / Forest HS
18	Jamie Craine	Soph.	M	5-7	Port Orange, Fla. / Spruce Creek HS
19	Alana Griner	Fr.	F/M	5-6	Savannah, Ga. / Windsor Forest HS
20	Ashley Elam	Jr.	M	5-5	Valdosta, Ga. / Darton College
21	Holly Grulich	Soph.	M/D	5-6	Tallahassee, Fla. / Auburn University
22	Erin Lariscy	Soph.	M/F	5-3	Savannah, Ga. / Calvary Baptist
24	Lisa Gray	Soph.	GK	5-10	Savannah, Ga. / St. Vincent's Academy
33	Tarra Kohler	Jr.	GK	5-6	Panama City, Fla. / Birmingham Southern

Head Coach: Eric Faulconer (Florida State, '92)

Assistant Coaches: Alison Clarke (Thomas University, '05), Hilary George (Gardner-Webb '06), Leanna Woodworth (Gardner-Webb, '06)

Pronunciation Guide

#2 - Donna CHAIN
 #3 - Candice MOH-duh-LEHN-skee
 #11 - Kim VAN HOW-TEN
 #33 - Tarra COL-uhr

#21 - Holly GROOL-itch
 #6 - Ama-CUH Of-WANI
 #16 - Emily LATT-nuhr

Table of Contents



Contents

Armstrong Atlantic State University	2
Administration	3
Head Coach Eric Faulconer	4
AASU Assistant Coaches	5
2006 Season Preview	6-7
2006 Player Profiles	8-20
AASU Media Services	21
Peach Belt Conference In Review	22
2006 Peach Belt Conference Composite Schedule	23
2006 Opponents	24-25
2005 Season Review	26-27
Individual Statistics & Records	28-29
AASU Athletic Facilities	30
Athletic Training	31
AASU Academics & Student Organizations	32
This Is Savannah	IBC
2006 Schedule	BC

Quick Facts

Location	Savannah, Ga. 31419
Founded	1935
Enrollment	7,000
Nickname	Pirates
Colors	Maroon and Gold
Athletics Webpage	www.athletics.armstrong.edu
Affiliation	NCAA Division II
Conference	Peach Belt
Home Field	Cingular Field
Capacity	250
President	Dr. Thomas Z. Jones
Athletic Director	Dr. Eddie Aenchbacher
Women's Soccer Head Coach	Eric Faulconer
Record at AASU (Years)	11-8 (2)
Overall Coaching Record (Years)	79-52-6 (7)
Assistant Coach	Alison Clarke

On the Covers

AASU's three seniors look to lead the Pirates into Peach Belt Conference contention in the program's second year of competition. Midfielder Donna Cheyne led the PBC in assists and earned the program's first NSCAA All-Region honors, while senior defenders Jessica Chipple and Candice Modlinski anchor the defense. The front and back covers also feature AASU's two All-PBC forwards, Shana Neves (front) and Lynsdi Stricklen (back), who ranked among the league's leading goal scorers in 2005.

Credits

The 2006 Armstrong Atlantic State University women's soccer media guide was published by the AASU Office of Sports Communications, Chad Jackson, director. AASU head coach Eric Faulconer, assistant coach Alison Clarke and sports information assistant Jay Carmichael also contributed to this publication. For more information regarding the AASU women's soccer program, please

Chad Jackson
Director of Sports Communications
 Phone: 912-961-3255
 Fax: 912-921-5571
 E-Mail: jacksoch@mail.armstrong.edu

Eric Faulconer
Head Women's Soccer Coach
 Phone: 912-921-2081
 Fax: 912-921-5571
 E-Mail: faulcoer@mail.armstrong.edu



AASU Athletic Department Phone Directory

Main Numbers
Athletic Department 912-927-5336
Athletics FAX 912-921-5571
 912-921-5852

Administration
 Dr. Eddie Aenchbacher, A.D. 912-921-5854
 Dr. Donald Anderson, Asst. A.D. 912-921-5863
 Chad Jackson, Sports Communications 912-961-3255
 Daniel Hinely, Athletic Trainer 912-927-5200
 Dianne Lane, Athletic Secretary 912-921-5849

Coaching Staff
 Joe Roberts, Baseball 912-921-5686
 Calvin Culberson, Asst. Baseball 912-921-5687
 Jeff Burkhamer, Basketball (Men's) 912-921-5683
 Steve Franklin, Asst. Men's Basketball 912-921-5684
 Joel Lecoeuvre, Asst. Men's Basketball 912-921-7311
 Roger Hodge, Basketball (Women's) 912-921-5861
 Elizabeth Lyons, Asst. Wm. Basketball 912-921-5862
 Veronica Campbell, Grad Asst. WBKB 912-921-7310
 Michael Butler, Men's & Women's Golf 912-921-5841
 Simon Earnshaw, Tennis 912-921-5842
 Zsofi Golopencza, Asst. Tennis 912-921-5842
 Eric Faulconer, Women's Soccer 912-921-2081
 Ted Evans, Softball 912-921-2391
 Jodie Swavely, Asst. Softball 912-921-2391
 Alan Segal, Volleyball 912-921-3785
 Jenni Holste, Asst. Volleyball 912-921-3786

Other Numbers
 Press Table (Basketball) 912-921-5473
 912-921-5572
 AASU Training Room 912-921-5860
 Sports Center Weight Room 912-921-5858

AASU finished third in its inaugural soccer season in 2005



Armstrong Atlantic State University

Since its founding in 1935, Armstrong Atlantic State University has continued to develop to meet the Savannah community's educational needs. From its first location in Armstrong House in downtown Savannah to its current home on a scenic 250-acre lot off of Abercorn, the university has become one of the finest educational institutions in the South-eastern United States.

Armstrong Junior College was established by the Mayor of Savannah and other public officials in 1935. Housed in the beautiful and historic Armstrong House, a gift to the city from the family of George F. Armstrong, Armstrong Junior College grew over the years to occupy eight additional buildings in the Forsyth Park and Monterey Square areas.

In 1959, as Armstrong College of Savannah, it became a two-year unit of the University System.

The Board of Regents conferred four-year status on Armstrong in 1964 and the college moved to its present 250-acre location, a gift from Donald Livingston and the Mills B. Lane Foundation, in December of 1965. Additional buildings joined the eight original structures as Armstrong added professional and graduate programs and tripled in size.

In July of 1996, the Board of Regents voted to rename the college to Armstrong Atlantic State University to reflect its mission and identity. The university's reputation of excellence is still evident in its dedication to students, with a supportive environment.

Armstrong Atlantic State University was fully accredited as a senior institution by the Southern Association of Colleges and Schools in December, 1968, with accreditation retroactive to January 1, 1968, and was last reaccredited in December, 2001.

The university offers more than seventy-five academic programs and majors in its School of Arts and Sciences, School of Health Professions and School of Education.



The academic community includes approximately 7,000 students and more than 250 faculty members. Enrollment has nearly doubled in the last 15 years, from 3,700 students in 1990 to its current number.

Across campus, evidence of the university's growth can be found in its facilities. Recently completed buildings include a 115,000 square foot, \$28 million dollar science building opened in 2002; a brand new Student Recreation Facility which opened this fall, as well as a \$5 million renovation of the Lane Library; and phases one and two of Compass Point, the school's first dormitory buildings which opened in 2003. Phase two provides an additional 300 beds to the already existing 275 beds from phase one and campus leaders are in talks for a planned phase three addition to Compass Point.

The athletic department of Armstrong Atlantic State University is housed in the Armstrong Sports Center, completed in 1995. The Sports Center includes offices for the physical education department, training room and weight room areas, basketball courts, indoor track and offices for coaches and athletic department personnel. The building played host to the Peach Belt Conference's basketball tournament in 1998 and 1999 and hosts several in-season tournaments each year. In 2004-05, Armstrong Atlantic State hosted Peach Belt Conference Championships in volleyball and golf, while also hosting the 2005 NCAA Division II Men's Golf National Championships. AASU will be hosting the 2006 Peach Belt Tennis Championships this upcoming season.

AASU sponsors ten intercollegiate sports and is a charter member of the Peach Belt Conference, formed in 1991. Women's soccer and women's golf debuted in 2004-05, joining men's and women's basketball, volleyball, baseball, men's and women's tennis, men's golf and softball as sports that AASU sponsors.

Continuing a mission begun in 1935, Armstrong Atlantic State University today serves a rich gamut of traditional and non-traditional students. Sixty percent of AASU's student body are from the Savannah-Chatham area, while others come from around the state, nation and world. All have come to Savannah to experience and thrive on the campus of one of the fastest developing higher learning institutions in the nation - to be a part of Armstrong Atlantic State University.





Dr. Thomas Z. Jones University President

Thomas Z. Jones, the sixth president to serve at Armstrong Atlantic State University, begins his seventh year at AASU. Hired on August 1, 2000, Jones was selected by the Board of Regents and University System of Georgia Chancellor Stephen R. Portch after an exhaustive national search.

Dr. Jones served on the faculty and administration at Columbus State University, as its vice president for academic affairs from 1988-2000, prior to coming to Armstrong Atlantic State. A 30-year veteran of university teaching and administration, Dr. Jones has taught at Indiana State University, Emory and Henry College and the West Virginia Institute of Technology. While at West Virginia Tech, Dr. Jones served as the Westmoreland Professor of Mining, an endowed professorship, and vice president of academic affairs.

Dr. Jones received his bachelor's degree in physics from Fairmont State College, his master of arts degree in geology from West Virginia University and his Ph.D in Geology from Miami (Ohio) University.

From 1980-1988, he owned and served as president of Technical Evaluation Consultants, Inc., a privately owned business specializing in providing science, technical and engineering services for business, industry, government agencies and the legal community.

Dr. Jones and his wife, Joyce, have two sons, Matthew and Michael.



Dr. Eddie Aenchbacher Athletic Director

Dr. Eddie Aenchbacher begins his eleventh full year as the athletic director for Armstrong Atlantic State University.

Dr. Aenchbacher's responsibilities include overseeing the entire athletic department and promoting Armstrong Atlantic State athletics in the community of Savannah.

Dr. Aenchbacher received his bachelor's degree in physical education from Armstrong Atlantic State in 1979, where he was a standout student-athlete for the baseball team as a pitcher. He received his Master's degree and Doctorate of Education from the University of Georgia.

Along with his student-athlete experience at AASU, Dr. Aenchbacher also coached the Pirate cross country teams for five years and started the first AASU men's soccer team, which he coached for seven years.

During Dr. Aenchbacher's tenure as athletic director, AASU's athletic programs have had tremendous success in the classroom and on the playing field. Student-athletes at AASU have excelled in academics with 49% percent earning a 3.0 grade point average or better. The overall grade point average of AASU student-athletes is 2.84, higher than the overall institutional GPA, and in 2005-06 the Armstrong Atlantic State athletic department captured the inaugural Peach Belt Conference Presidential Academic Award, given to the league athletic department whose student athletes record the highest overall GPA compared to the student body. AASU also sent six of 10 intercollegiate teams to NCAA Championship play and six of 10 teams also finished the 2005-06 season ranked nationally.

Dr. Aenchbacher has been married for 14 years to Michele and together they are the proud parents of two children, Jesse and Lainey.





Eric Faulconer Head Women's Soccer Coach



Eric Faulconer begins his second season as the head coach of the Armstrong Atlantic State women's soccer program with an overall career record of 79-52-6. The former head coach at Thomas University, Faulconer started the Lady Night Hawks program in 1999 and compiled a 68-44-6 record in six seasons at the NAIA institution.

True to those words, Faulconer assembled a roster of 22 players for the inaugural AASU women's soccer program that included four of his former Thomas University players, three transfers from Division I institutions and nine players from the state of Georgia, including four from the immediate Savannah area. He led the inaugural squad to the Peach Belt Tournament Semifinals, a position atop the leader board in goals scored (60), assists (49) and points (169) and an 11-8 overall record.

Faulconer was the NSCAA/adidas 2003 South Region Coach of the Year as well as the NAIA Region 13 Coach of the Year for leading Thomas to a 15-6-2 mark and a berth in the NAIA National Championships in Santa Barbara, Calif., where the Lady Night Hawks advanced to the second round. In 2004, Thomas was ranked as high as No. 10 in the NAIA National rankings and finished with a 11-5-2 record and a third straight berth in the NAIA Region 13 tournament.

In Faulconer's second season at Thomas in 2000, he led the Lady Night Hawks to a 12-9 overall record and an undefeated 9-0 home campaign. In 2002, his fourth season, Thomas went 12-6-1 and earned the program's first NAIA national ranking (18th) and advanced to the NAIA Region 13 Championship game. His 68-44-6 record ranks as the 16th-best career winning percentage in NAIA.

Prior to starting the Thomas University women's soccer program, Faulconer was an assistant coach with the Thomas University men's soccer program during the 1998-99 season. He also served as Deputy Commissioner of the professional Eastern Indoor Soccer League from 1996-98. In addition to his duties with Thomas University, Faulconer also served as the Director of Girls Player Development for the Tallahassee United Futbol Club and on the staff with Tallahassee-based Warner Soccer. Faulconer holds a USSF National B License and is a member of the Florida and Georgia Youth Soccer Association Olympic Development coaching staff.

Born in New Jersey, Faulconer's family moved to Naples, Florida in 1979. He graduated from the Florida State University with a bachelor's degree in political science in 1992 and a master's degree in public administration in 1996, with additional graduate course work in sport administration. Eric and his wife Ginger have one son, Zachary Colin Faulconer.

The Eric Faulconer Ledger

<i>Year</i>	<i>Team</i>	<i>Overall</i>	<i>Conference</i>	<i>Highlights</i>
1999	Thomas University	9-7	Independent	
2000	Thomas University	12-9	Independent	Perfect 9-0 At Home
2001	Thomas University	9-11	Independent	
2002	Thomas University	12-6-2	Independent	Ranked 18th in NAIA
2003	Thomas University	15-6-2	Independent	NAIA National Quarterfinalists / Ranked 16th NAIA
2004	Thomas University	11-5-2	Independent	Ranked 10th in NAIA
2005	Armstrong Atlantic	11-8	Peach Belt	Advanced to PBC Tournament Semifinals
Total	7 Years	79-52-6		

Women's Soccer Assistant Coaches



Alison Clarke Assistant Women's Soccer Coach

Alison Clarke, a Drogheda, Ireland native, begins her second season as assistant coach to Eric Faulconer for the 2006 season. A 2005 graduate from Thomas University with her bachelor's degree in history, she played and started all 84 games during her four-year career under the guidance of Coach Faulconer. Alison is the all-time Thomas University record holder in games played and started.

She served as team captain and was a NAIA Academic All-American graduating with Magna Cum Laude honors. Clarke was selected as the team MVP in 2000 and won the Coaches Award in 2001 and 2004. Captained and helped lead the 2003 NAIA Region 13 championship team. She served as a student assistant at Thomas in 2005, helping the team achieve a program best national ranking of tenth.



Hilary George Volunteer Assistant Coach

Hilary George, a 2006 graduate of Gardner-Webb University earned a master's degree in sport science and pedagogy. Earned a bachelor's degree in communication studies in May 2004.

George was selected as an All-American by the NCCAA in 2001. Four year starter in goal at Division I Gardner-Webb University. Served as assistant soccer coach at Avon Lake High School in Ohio in 2003. Also served as an instructor for Kiko's Dribbling Camp.



Leeanna Woodworth Volunteer Assistant Coach

Leeanna Woodworth, a 2006 graduate of Gardner-Webb University earned a bachelor's degree in sports management.

Woodworth was named an ESPN The Magazine Academic All-American selection by Co-SIDA set many records at Gardner-Webb, including being the school's all-time leader with 135 points, 49 goals and 37 assists over her four year career at forward. Earned a three-time selection on the Atlantic Sun Conference All-Academic team.

Named as a 2005 NSCAA Academic All-South first team selection and a three time All Atlantic Sun Conference selection. Following her school record breaking junior season with 59 points, 22 goals and 15 assists Woodworth was named All-A-Sun Conference player of the year. Led the nation during her 2004 season with 2.94 points per game.



AASU is the first team in the Peach Belt to webcast its soccer matches

5



Pirates Expect To Compete For

Head coach Eric Faulconer and the Pirates exceeded all expectations in their inaugural season, posting an 11-8 overall record, a 6-2 mark in the Peach Belt Conference and finishing just one point out of first in the league standings.

With 13 returnees from last season's squad that led the Peach Belt in scoring with 60 goals and several talented newcomers joining the Pirates for 2006, coach Faulconer should be able to count on his team making another serious charge for a league title in just its second season of competition.

The Pirates had a nose for the net last season, scoring five or more goals in six contests, and that success comes from the talent up top. AASU's two leading scorers from a season ago are back for their sophomore seasons as **Shana Neves** (5-7, Soph. Milton, Fla.) and **Lyndsi Stricklen** (5-3, Soph., Middleburg, Fla.) both were named to the PBC All-Conference team and finished among the league's scoring leaders as true freshmen. Sophomore **Erin Lariscy** (5-3,

Soph., Savannah, Ga.) returns as well, having played in 16 games last season.

Coach Faulconer played a two-forward formation last season but has hinted at a possible change to a three-forward rotation, mostly because of the incoming talent he has at the position. Sophomore **Kristin Savoy** (5-4, Soph., Woodsville, N.H.) transfers in after playing one season for Gardner-Webb, and holds the New Hampshire state high school record for most goals scored in a game and career. Fresh-

man **Amaka Ofuani** (5-6, Fr. Tallahassee, Fla.) was an all-state striker at Lincoln HS in Florida who holds her high school's career scoring record, while freshman **Kristin Burton** (5-8, Fr., Ocala, Fla.) scored 140 career goals at Ocala Forest HS and was a three time *Ocala Star Banner* Player of the year.

The midfield starts with team captain and senior **Donna Cheyne** (5-6, Sr., Elgin, Scotland), who led the Peach Belt in assists with 14 and was the Pirates' first-ever NSCAA All-Region selection, placing on the third team. Sophomore **Jamie Craine** (5-7, Soph., Port Orange, Fla.) had a strong finish to her freshman season, scoring four goals in two games against GC&SU and earning All-PBC Tournament honors for the Pirates, while fellow sophomore **Maggie Kennedy** (5-5, Soph. Abita Springs, La.) played in all 19 games and logged five starts.

Competition for time in the midfield will come from three newcomers as junior college transfer **Ashley Elam** (5-5, Jr. Valdosta, Ga.) joins the Pirates from helping Dalton College to a second-place finish at the NJCAA Women's Soccer National Championships in 2005. Freshman **Ginny Child** (5-8, Fr., Newnan, Ga.) was an All-Region selection by the *Atlanta Journal Constitution* at Newnan HS and local product **Alana Griner** (5-6, Fr., Savannah, Ga.) was a four time Region Player of the Year selection for Windsor Forest HS who could see time in the midfield and up front.

AASU's defense will be anchored by a pair of seniors in the middle. **Jessica Chipple** (5-11, Sr., Hinesville, Ga.) is a four-year player for coach Faulconer who scored two goals and added three assists last season for the Pirates. **Candice Modlinski** (6-0, Sr., St. Charles, Ill.) has made the transition completely from volleyball to soccer and returns for her final season having played the second-most minutes (1462) on the Pirates' squad in 2005.



Sophomore Jamie Craine who added seven goals, one assist and 15 points looks to continue her presence on the field.



Sophomore Lyndsi Stricklen led the Pirates in scoring as a freshman with a team-high 12 goals. She was also named to the 2005 PBC All-Conference team.



Peach Belt Title In 2006



Donna Cheyne led the Peach Belt Conference in assists with 14 in 2005, earning All-Region honors.

Chipple and fellow returner **Emily Latner** (5-9, Jr., Pensacola, Fla.) each give coach Faulconer a little versatility as they can both step into the midfield if needed. Sophomore **Jennifer Brian** (5-7, Soph., St. Simons Island, Ga.), who did lead the team in minutes played in 2005, and sophomore **Holly Grulich** (5-6, Soph., Tallahassee, Fla.) improved throughout the inaugural season

and should be solid as sophomores for the Pirates in 2006.

Two newcomers will help bolster the Pirate defense this season. Sophomore transfer **Kim Van Houten** (5-5, Soph., Pensacola, Fla.) brings in some collegiate experience as she joins AASU from West Florida, where she played in the Argonauts' hurricane-shortened 2004 campaign. Freshman **Kayley Ralton** (5-7, Fr., Edinburgh, Scotland), meanwhile, brings international experience to the Pirates as she was the former captain of the Scotland national U-17 squad in her home country.

The final line of defense comes between the posts for the Pirates, and coach Faulconer will have a trio of talented keepers to count on for 2006. Junior **Tarra Kohler** (5-6, Jr., Panama City, Fla.) began the 2005 season as the Pirates' starting goalkeeper and played well until suffering a season-ending injury in just the fourth game of the season. Kohler has recovered and will look to reclaim her starting role this year. Sophomore **Lisa Gray** (5-10, Soph., Savannah, Ga.) filled in admirably as a true freshman last season, logging 17 starts after the injury to Kohler and notching a 9-6 record with 66 saves and a 2.37 GAA. Both returning keepers will find stiff competition from freshman **Samantha Held** (5-8, Fr., Green Cove Springs, Fla.), an All-State selection at Clay HS who played in the Florida Senior HS All-Star game.

In an effort to attract more notice from the region, the Pirates have upgraded their schedule for 2006, facing not only the rigors of the competitive Peach Belt Conference,

but taking on several other regionally- and nationally-ranked squads. AASU will open up the campaign in Tampa against No. 9-ranked University of Tampa and Florida Southern, then also face key road tests at No. 14 Catawba and No. 24 Tusculum - two teams who participated in the NCAA Southeast Regional last season and will be jockeying with the Pirates for postseason berths this season. AASU will also travel to Erskine and Newberry for non-conference tilts. The Pirates' home schedule features both PBC teams picked ahead of the Pirates in the pre-season coaches' poll - Clayton State and Columbus State - as well as non-conference dates with Presbyterian, Anderson, Belmont Abbey and cross-town rival SCAD.

2006 NSCAA/adidas Division II Preseason Coaches Poll

School

1. University of Nebraska-Omaha
2. Seattle Pacific University
3. Franklin Pierce College
4. Carson-Newman College
5. Metro State
6. University of West Florida
7. Grand Valley State
8. West Chester University
9. *University of Tampa*
10. UC San Diego
11. Northern Kentucky University
12. Regis University
13. Assumption College
14. *Catawba College*
- t15. University of Central Oklahoma
- t15. University of New Haven
17. Minnesota State Univer.-Mankato
18. Barry University
- t19. Cal State Dominguez Hills
- t19. *Clayton State*
21. Merrimack
22. C.W. Post
23. SIU-Edwardsville
24. *Tusculum College*
- t25. Bryant College
- t25. Chico State

Also receiving votes: South Dakota, Slippery Rock, Incarnate Word
Italics represent 2006 opponents



First-place votes in parenthesis.
As voted on by the PBC Women's Coaches; Coaches could not vote for own team.

2006 Peach Belt Preseason Women's Soccer Poll

Rk	School	Votes
1.	Columbus State	80 (8)
2.	Clayton State	74 (2)
3.	<i>Armstrong Atlantic State</i>	62
4.	UNC Pembroke	54
5.	USC Upstate	41
6.	Lander	40
7.	GC&SU	38
8.	North Georgia	28
9.	USC Aiken	24
10.	Ga. Southwestern	9



Donna Cheyne

Senior Midfielder

5-5 • Elgin, Scotland • Thomas University

2



2005

Played and started in all 19 games as a junior for the Pirates in the inaugural season ... Recorded 46 shots, eight goals a number that tied for tenth in the PBC, 30 points which ranked sixth in the PBC and a PBC leading 14 assists ... Ranked sixth in the nation for assists per game with 0.74 ... Third team All-Region selection ... Served as a captain for the inaugural 2005 season ... Became Armstrong's first ever PBC player of the week on September 27 ... Named to the 2005 PBC All-Conference team as a midfielder ... Named to the 2005 PBC All-Tournament team ... Selected as the 2005 team MVP.

PREVIOUS COLLEGE

Started for two seasons for head coach Eric Faulconer at Thomas University ... Team captain at Thomas in 2003 ... Named team's most valuable player in 2003 and received the Coaches Award in 2004 ... Scored seven goals and recorded 17 assists in two seasons at Thomas.

Cheyne's Match Highs

Goals:

2 vs. UNC Pembroke, 9/24/05
vs. GC&SU, 11/1/05

Assists:

3 vs. USC Aiken, 10/10/05

Points:

6 vs. GC&SU, 11/1/05

Shots:

7 vs. Ga. Southwestern, 9/19/05
vs. UNC Pembroke, 9/24/05

PERSONAL

Born Donna Cheyne on September 23, 1977, in Edinburgh, Scotland ... Hometown is Elgin, Scotland ... Daughter of Jane and Gerard Cheyne ... Majoring in physical education and health science ... Would like to become a Division I soccer coach ... Enjoys watching movies, cooking and hanging out with friends ... Lists David Beckham and Steffi Graf as favorite sports personalities ... Lists former teammate Claire McCombe as an influential personality.



Donna Cheyne's Career AASU Statistics

Year	GP-GS	Minutes	Goals	Assists	Points	Shots	Shot%
2005	19-19	1413	8	14	30	46	.174
1 Year	19-19	1413	8	14	30	46	.174

Senior Jessica Chipple



Jessica Chipple

Senior Defender

5-11 • Hinesville, Ga. • Thomas University



2005

Played and started all 19 games as a junior for the Pirates in the inaugural season ... Tallied 24 shots, two goals, three assists and seven points ... Served as a captain for the inaugural 2005 season.

PREVIOUS COLLEGE

Played two seasons at Thomas University ... Earned NAIA All-Region XIII and honorable mention All-America honors as a freshman in 2003 ... Scored two goals and two assists in her freshman season ... Scored one goal and added one assist as a sophomore.

HIGH SCHOOL

Played for four years at Liberty County HS in Hinesville, Ga. ... Named one of the top 15 players in the Coastal Empire area by the *Savannah Morning News* in 2003 ... Scored 19 goals in her career as a midfielder ... Two-time All-Region 2-AAA selection ... High school basketball teammate of current AASU player Kaneetha Gordon at Liberty County.



Chipple's Match Highs

Goals:

1 vs. St. Leo, 9/9/05
vs. North Ga., 10/12/05

Assists:

2 vs. North Ga., 10/12/05

Points:

4 vs. North Ga., 10/12/05

Shots:

4 vs. SCAD, 9/6/05

PERSONAL

Born Jessica Chipple on December 5, 1984, in Hinesville, Ga., her hometown ... Daughter of Susan and Ken Chipple ... Majoring in physical education ... Would like to coach soccer after college ... Enjoys watching movies, eating and going to the beach ... David Beckham is a favorite sports personality.

Jessica Chipple's Career AASU Statistics

Year	GP-GS	Minutes	Goals	Assists	Points	Shots	Shot%
2005	19-19	1430	2	3	7	24	.083
1 Year	19-19	1430	2	3	7	24	.083

Chipple has started all 58 games of her career for Coach Faulconer



Senior Candice Modlinski

Candice Modlinski

Senior Defender

6-0 • St. Charles, Ill. • St. Charles East HS

3



2005

Played in all 19 games and started 16 games as a junior for the Pirates in the inaugural season ... Tallied seven shots, one goal and two points ... Her one goal coming in the 4-3 win over GC&SU on October 29, 2005 ... Recorded 1462 minutes of playing time, the second most on the team.

AT AASU - VOLLEYBALL

Played four years at AASU and is the school's all-time leader in blocks as well as ranking fourth in kills and sixth in digs ... 2004 AVCA All-South Region honoree and 2003 AVCA All-South Region honorable mention honoree.

HIGH SCHOOL

Started for four years at four-time Illinois state champion St. Charles East HS ... St. Charles East was ranked in the top 10 nationally ... Also played in the Illinois Olympic Development program for two years ... Played club for Saint Charles Soccer Club, two-time Illinois State Cup champions.



Modlinski's Match Highs

Goals:

1 vs. GC&SU, 10/29/05

Points:

2 vs. GC&SU, 10/29/05

Shots:

3 vs. Ga. Southwestern, 9/19/05

PERSONAL

Born Candice Ann Modlinski on January 16, 1983, in Skokie, Ill. ... Hometown is St. Charles, Ill. ... Daughter of Cheryl and Dan Modlinski ... Majoring in health science and would like to work with professional athletes after college ... Enjoys playing volleyball and loves the Chicago Bears ... Kristine Lilly and Shannon MacMillan are favorite sports personalities.

Candice Modlinski's Career AASU Statistics

Year	GP-GS	Minutes	Goals	Assists	Points	Shots	Shot%
2005	19-16	1462	1	0	2	7	.143
1 Year	19-16	1462	1	0	2	7	.143

10

Modlinski played 1462 minutes, the second most on the team in 2005

Juniors Ashley Elam and Tarra Kohler



Ashley Elam

Junior Midfielder

5-5 • Valdosta, Ga. • Darton College

20



PREVIOUS COLLEGE

Played two seasons at Darton College ... Earned All-Region honors and helped the Cavaliers to a second place finish in the NJCAA National Tournament ... Earned Academic All-American award as well as the Darton College Academic Athlete award for a 4.0 GPA.

HIGH SCHOOL

Played for four years at Lowndes County HS in Valdosta, Ga. ... Earned All-Region player of the year her junior year.

PERSONAL

Born Ashley Renee Elam on June 28, 1986, in Charleston, W.Va. ... Hometown is Valdosta, Ga. ... Daughter of Rodney and Nancy Elam ... Majoring in biology ... Would like to attend med school after she graduates ... Enjoys skiing and traveling ... Favorite sports personalities include David Beckham and Zinedine Zidane.

Tarra Kohler

Junior Goalkeeper

5-6 • Panama City, Fla. • Birmingham Southern

33



2005

Played in and started four games as junior a for the Pirates in the inaugural season ... Tallied 17 saves, allowed eight goals and posted a 2-2 record ... Suffered a season ending injury in the 2-1 win over SCAD on September 6, 2005 ... Received a medical redshirt and still retains her junior year of eligibility.

PREVIOUS COLLEGE

Played two seasons at Division I Birmingham Southern College ... Led the Panthers to the 2004 Big South Conference championship and an NCAA Championship appearance ... Started 16 games in 2004 and recorded a 1.38 goals against average, recording 44 saves ... Played in two games as a freshman, tallying 135 minutes of action and making six saves.

HIGH SCHOOL

Played and started all four years at AC Mosley High School in Lynn Haven, Fla. ... Earned All-District honors twice and also earned All-County honors four times ... A two year Captain ... Also lettered in cross country and weightlifting ... Played club soccer in Alabama for the American Soccer Club Lady Jets and captured the 2004 Alabama State Cup.

PERSONAL

Born Tarra Lynn Kohler on September 17, 1985, in Del Rio, Texas ... Hometown is Panama City, Fla. ... Daughter of Geri and Matt Kohler ... Majoring in criminal justice ... Enjoys horses and drawing ... Mary Harvey, goalkeeper for the first US Olympic Gold Medal team, is her favorite sports personality.

Tarra Kohler's Career AASU Statistics

Year	GP-GS	Minutes	Goals Allowed	Average	Saves	Save Percentage
2005	4-4	340:02	8	2.12	17	.680
1 Year	4-4	340:02	8	2.12	17	.680

Elam earned Academic All-American honors



Junior Emily Latner and Sophomore Jennifer Brian

Emily Latner

Junior Defender/Midfielder

5-9 • Pensacola, Fla. • Thomas University

16



2005

Played in 18 games and started 12 games as a sophomore for the Pirates in the inaugural season ... Tallied eight shots, one goal and two points.

PREVIOUS COLLEGE

Played in all 16 games as a freshman for Thomas University in 2004 ... Named team's defensive Player of the Year ... Tallied one assist and three shots.

HIGH SCHOOL

Played for three seasons at Booker T. Washington HS, earning All-Region honors each year by the *Pensacola News-Journal* ... Named team MVP and led team in goals and assists as a senior ... Played club soccer with Pensacola Futbol Club.

PERSONAL

Born Emily Veronica Latner on June 25, 1986, in Jacksonville, Fla. ... Hometown is Pensacola, Fla. ... Daughter of Evelyn and Ralph Latner ... Majoring in Psychology ... Enjoys hanging out with friends and going to church.

Emily Latner's Career AASU Statistics

Year	GP-GS	Minutes	Goals	Assists	Points	Shots	Shot%
2005	18-12	974	1	0	2	8	.125
1 Year	18-12	974	1	0	2	8	.125

Jennifer Brian

Sophomore Defender

5-7 • St. Simons Island, Ga. • Frederica Academy

5



2005

Played in and started all 19 games as a freshman for the Pirates in the inaugural season ... Recorded 1466 minutes of playing time, the most on the team ... Tallied six shots ... A member of the PBC Presidential Honor Roll.

HIGH SCHOOL

Four-year starter for the Frederica Academy Knights in St. Simons Island, Ga. ... Played for two-time State Championship winner Frederica Academy (2003 & 2005) ... Named to the All-Region team three times ... Served as co-captain her junior and senior years ... Also earned two letters in softball and served as team captain ... Played club soccer for AFC Lightning in Atlanta.

PERSONAL

Born Jennifer Lauren Brian on September 14, 1987, in Johnson City, NY. ... Hometown is St. Simons Island, Ga. ... Daughter of Vickie and Steve Brian ... Undecided in major ... Enjoys watching movies, shopping and playing softball ... Brandi Chastain is a favorite sports personality ... Lists Jessica Simpson as a favorite entertainer.

Jennifer Brian's Career AASU Statistics

Year	GP-GS	Minutes	Goals	Assists	Points	Shots	Shot%
2005	19-19	1466	0	0	0	6	.000
1 Year	19-19	1466	0	0	0	6	.000

12

Brian led the team with 1466 minutes played

Sophomores Jamie Craine and Lisa Gray



Jamie Craine

Sophomore Midfielder

5-7 • Port Orange, Fla. • Spruce Creek HS

18



2005

Played and started in all 19 games as a freshman for the Pirates in the inaugural season ... Tallied 27 shots, seven goals, one assist and 15 points ... One of the two Pirates named to the 2005 PBC All-Tournament team ... Member of the PBC Presidential Honor Roll

HIGH SCHOOL

Played and lettered for four seasons at Spruce Creek HS in Port Orange, Fla. ... Earned All-State second team ... Named Player of the Year for the Volusia/Flagler counties by the *Orlando Sentinel* ... Also named First Team for the Volusia/Flagler counties by the *Daytona Beach News-Journal*.

PERSONAL

Born Jamie Lee Craine on April 27, 1987, in Melbourne, Fla. ... Hometown is Port Orange, Fla. ... Daughter of Debra and Paul Craine ... Majoring in nursing ... Enjoys animals, working with children and photography ... Dwayne Wade and Terrell Owens are favorite sports personalities.

Jamie Craine's Career AASU Statistics

Year	GP-GS	Minutes	Goals	Assists	Points	Shots	Shot%
2005	19-19	1282	7	1	15	27	.259
1 Year	19-19	1282	7	1	15	27	.259

Lisa Gray

Sophomore Goalkeeper

5-10 • Savannah, Ga. • St. Vincent's Academy

24



2005

Played in 18 games and started 15 as a freshman for the Pirates in the inaugural season ... Allowed 37 goals and notched 66 saves in 1405.4 minutes ... Posted a 9-6 record with three shutouts ... Member of the PBC Honor Roll.

HIGH SCHOOL

Played and started for four seasons at St. Vincent's Academy in Savannah, Ga. ... Earned first-team All-Area and All-Region four times as a goalkeeper ... Played for the three-time region champion Saints (2002/2003/2004) ... Earned All-Region basketball honors twice ... Lettered in both softball and cross country ... Hollis Stacy Award Recipient for 2005, awarded to the most versatile high school athlete in the Savannah area.

PERSONAL

Born Lisa Christine Gray on July 27, 1987, in Savannah, Ga. her hometown ... Undecided in major ... Daughter of Kelly and Stephen Gray ... Her brother, Bryan plays for the Morehead State University football team ... Enjoys running, playing basketball, going to the beach and loves making pottery and art ... Michael Jordan is a favorite sports personality.

Lisa Gray's Career AASU Statistics

Year	GP-GS	Minutes	Goals Allowed	Average	Saves	Save Percentage
2005	18-15	1405:44	37	2.37	66	.641
1 Year	18-15	1405:44	37	2.37	66	.641

Craine was named to the 2005 All-PBC Tournament team

13



Sophomores Holly Grulich and Kim Van Houten

Holly Grulich

Sophomore Midfielder/Defender

5-6 • Tallahassee, Fla. • Auburn University

21



2005

Played in 16 games and started two as a freshman for the Pirates in the inaugural season ... Tallied five shots, one goal, one assist and three points ... Her goal came off a penalty kick in the win against Georgia Southwestern on September 19, 2005 ... Member of the PBC Presidential Honor Roll ... Earned the 2005 Coaches' Award, as well as the Team Academic Award.

PREVIOUS COLLEGE

Attended Auburn University for one year and played on the Auburn women's club soccer team ... Made the Dean's List at Auburn as a freshman.

HIGH SCHOOL

Played for four seasons at Lawton Chiles HS in Tallahassee, Fla. ... Led the Timberwolves to a region championship as a senior ... Team Captain who was nominated for the Wendy's High School Heisman award in 2003.

PERSONAL

Born Holly Renee Grulich on September 23, 1985, in College Station, Texas ... Hometown is Tallahassee, Fl. ... Daughter of Lisa Chason and Carl Grulich ... Majoring in elementary education ... Would like to pursue a career as a child guidance counselor ... Enjoys church, running and tennis ... Michelle Akers is a favorite sports personality ... Lists current President George W. Bush as an influential personality.

Holly Grulich's Career AASU Statistics

Year	GP-GS	Minutes	Goal	Assists	Points	Shots	Shot%
2005	16-2	478	1	1	3	5	.200
1 Year	16-2	478	1	1	3	5	.200

Kim Van Houten

Sophomore Defender/Midfielder

5-5 • Pensacola, Fla. • University of West Florida

11



PREVIOUS COLLEGE

Played a hurricane shortened season at the University of West Florida ... Played kicker for the 2005 NWFA Conference Champions the Pensacola Power.

HIGH SCHOOL

Four-year player for Booker T. Washington HS in Pensacola, Fla., her hometown ... During her stint as a Wildcat she was district champion three times and made one final four appearance her Junior year ... Member of the National Honor Society

PERSONAL

Born Kimberly Patricia Van Houten on August 16, 1986, in Hemet, Calif. ... Hometown is Pensacola, Fla. ... Daughter of Sharon Van Houten ... Cousin, Chris Mullin played for the Indiana Pacers and was also a member of the first USA Dream Team in 1992 ... Majoring in criminal justice ... Enjoys surfing ... Michael Ballack, Captain of the German National Soccer Team is a favorite sports personality.

Sophomores Maggie Kennedy and Erin Lariscy



Maggie Kennedy

Sophomore Midfielder

5-5 • Abita Springs, La. • St. Scholastica

15



2005

Played in all 19 games and started five of them as a freshman for the Pirates in the inaugural season ... Recorded seven shots ...

HIGH SCHOOL

Played and started for four seasons at St. Scholastica Academy in Abita Springs, La. ... Earned honorable mention All-State honors in 2003 ... Two-time All-District player for the Louisiana state finalist Doves (2004/2005) ... Played club soccer for Mandeville and Baton Rouge, helping Mandeville win the Louisiana state cup in 2002 and Baton Rouge in 2005 ... Former member of the Louisiana Olympic Developmental Program state team.

PERSONAL

Born Margaret Ashley Kennedy on November 23, 1986, in Monroe, La. ... Hometown is Abita Springs, La. ... Daughter of Robyn and Ben Kennedy ... Majoring in communications ... Would like to pursue a career in public relations or become a TV personality ... Enjoys being with friends, sleeping, eating and going to concerts ... Lists David Beckham, Michelle Akers and Tom Brady as favorite sports personalities.

Maggie Kennedy's Career AASU Statistics

Year	GP-GS	Minutes	Goal	Assists	Points	Shots	Shot%
2005	19-5	697	0	0	0	7	.000
1 Year	19-5	697	0	0	0	7	.000

Erin Lariscy

Sophomore Midfielder/Forward

5-3 • Savannah, Ga. • Calvary Baptist

22



2005

Played in 16 games for the Pirates in the inaugural season ... Recorded two shots ... Member of the PBC Presidential Honor Roll.

HIGH SCHOOL

Played four seasons for Calvary Baptist in Savannah, Ga. ... Named Most Outstanding Player in 2004 ... Holds school record for most goals in career and season ... Also participated in volleyball for the Cavaliers ... Named All-Coastal Empire by the *Savannah Morning News* in 2003 and 2004 ... Served as co-captain in 2003 and 2004 ... Nominated for the Wendy's High School Heisman award in 2004.

PERSONAL

Born Erin Lariscy on October 17, 1986, in Athens, Ga. ... Hometown is Savannah, Ga. ... Daughter of Barbara and Michael Lariscy ... Her father, Michael coached tennis at Armstrong Atlantic State for seven years and is the department head for Health and P.E. ... Undecided in major ... Enjoys drawing and reading.

Erin Lariscy's Career AASU Statistics

Year	GP-GS	Minutes	Goals	Assists	Points	Shots	Shot%
2005	16-0	258	0	0	0	2	.000
1 Year	16-0	258	0	0	0	2	.000

Lariscy was one of six Soccer PBC Presidential Honor Roll Honorees for 2005



Sophomores Shana Neves and Kristin Savoy

Shana Neves

Sophomore Forward

5-7 • Milton, Fla. • Pace HS

10



2005

Played in all 19 games and started 18 of them as a freshman for the Pirates in the inaugural season ... Tallied 63 shots, 13 goals which ranked fourth in the PBC, eight assists a number that tied her for third in the PBC and 34 points that ranked her fourth in the PBC ... Named to the 2005 PBC All-Conference team as a forward.

HIGH SCHOOL

Played for four seasons at Pace HS in Pensacola, Fla. ... Was the area's leading goal scorer as a junior and senior and scored 81 goals in her four-year career for the Patriots ... Two-time All-Region selection by the *Pensacola News-Journal* ... Played club soccer for Pensacola Futbol Club and Niceville Force ... Helped Niceville win the U19 Orange Classic championship in 2005.

PERSONAL

Born Shana Renee Neves on December 5, 1986, in Pace, Fla. ... Hometown is Milton, Fla. ... Daughter of Beth and Frank Neves ... Majoring in education ... Enjoys reading and watching movies ... Lists Ronaldo as a favorite sports personality.

Shana Neves' Career AASU Statistics

Year	GP-GS	Minutes	Goals	Assists	Points	Shots	Shot%
2005	19-18	974	13	8	34	63	.206
1 Year	19-18	974	13	8	34	63	.206

Kristin Savoy

Sophomore Midfielder/Forward

5-4 • Woodsville, N.H. • Gardner Webb

4



PREVIOUS COLLEGE

Played one season for NCAA DI Gardner Webb University ... Played in nine games, scored one goal, tallied one assist, earned three points and shot six times ... Scored game winning goal against Stetson University in the Atlantic Sun Conference quarterfinals on November 4, 2004.

HIGH SCHOOL

Played for four seasons at Woodsville HS in N.H. ... Holds the state of New Hampshire record for most goals scored in a game with eight ... Holds the record for career goals (98) and career points (119) for her high school ... Four time All-State selection ... Two time member of the Region I ODP team.

PERSONAL

Born Kristin K. Savoy on March 4, 1986, in Redondo Beach, Calif. ... Hometown is Woodsville, N.H. ... Daughter of Lorie Savoy ... Sister, Cindy Savoy played soccer for four years at Wesley College and is now the women's assistant coach ... Majoring in physical education ... Enjoys snowboarding, swimming and outdoor activities ... Lists Brandi Chastain as a favorite sports personality.

16 Neves scored AASU's first-ever goal against Christian Brothers on Aug. 27, 2005

Sophomores Lyndsi Stricklen and Kristin Burton



Lyndsi Stricklen

Sophomore Forward/Midfielder

5-3 • Middleburg, Fla. • Ridgeview HS

12



2005

Played and started in all 19 games as a freshman for the Pirates in the inaugural season ... Tallied 55 shots, 12 goals a number that ranked sixth in the PBC, seven assists and ranked seventh in the PBC and 31 points which ranked fifth in the PBC ... Named to the 2005 PBC All-Conference team as an At-large selection.

HIGH SCHOOL

Played four seasons for Ridgeview HS in Orange Park, Fla. ... Earned All-State honors as a senior for the Panthers in 2005 ... Three-time All-Conference honoree... Leading scorer all four years for the Panthers ... Tied for ninth all-time in Florida for goals scored in high school with 113 ... Played club soccer for Clay County United with teammate Samantha Held, where she led her team to an appearance at the USYSA U-17 Directors Cup finals in Indianapolis.

PERSONAL

Born Lyndsi Nicole Stricklen on July 14, 1987, in Orange Park, Fla. ... Hometown is Middleburg, Fla. ... Daughter of Cathleen and Darren Stricklen ... Mother, Cathleen, played collegiate softball for FCCJ as well as Jacksonville University ... Father, Darren, played baseball for St. Johns CC and Jacksonville University ... Undecided in major ... Enjoys hanging out with friends.

Lyndsi Stricklen's Career AASU Statistics

Year	GP-GS	Minutes	Goals	Assists	Points	Shots	Shot%
2005	19-19	1095	12	7	31	55	.218
1 Year	19-19	1095	12	7	31	55	.218

Kristin Burton

Freshman Forward

5-8 • Ocala, Fla. • Forest HS

17



HIGH SCHOOL

Played and lettered for four seasons at Forest HS in Ocala, Fla. ... Named 2006 Florida Class 5A Player of the Year ... Named to the 2005 NSCAA All-South Region Team ... Named 2005 Florida Class 4A Player of the Year ... Three time *Ocala Star Banner* Player of the Year ... Three time All-State selection ... Recorded 140 career goals and 85 assists ... Played club soccer for the Ocala Lightning ... Member of the National Honor Society.

PERSONAL

Born Kristin Summers Burton on July 18, 1988 in Fort Myers, Fla. ... Hometown is Ocala, Fla. ... Daughter of Kevin and Sarah Burton ... Undecided in major ... Enjoys all sports ... Lists Brandi Chastain as a favorite sports personality.

Stricklen earned All-PBC honors in 2006 as a freshman

17



Freshmen Ginny Child and Alana Griner

Ginny Child

Freshman Midfielder

5-8 • Newnan, Ga. • Newnan, Ga.

1



HIGH SCHOOL

Played and started for four seasons at Newnan HS in Newnan, Ga. ... Was named to the All-Region team by the *Atlanta Journal Constitution* ... Played in the Georgia Senior All-Star Game in May 2006 ... Captained the Cougars her senior year to the semifinals in Georgia Class 5A ... Played club soccer for Peachtree City Lazars and Coweta Cannons.

PERSONAL

Born Virginia MacCrae Child on May 8, 1988, in Decatur, Ga. ... Hometown is Newnan, Ga. ... Daughter of Cleland and Susan Child ... Undecided in major ... Enjoys playing cards, watching the Arsenal soccer team and the Detroit Redwings ... Lists Thierry Henry and Michael Ballack as favorite sports personalities.

Alana Griner

Freshman Forward/Midfielder

5-6 • Savannah, Ga. • Windsor Forest HS

19



HIGH SCHOOL

Played four seasons for Windsor Forest HS in Savannah, Ga. ... Named All-Region player of the year all four years ... Named most valuable player for the Knights ... Played her club soccer for Coastal Georgia.

PERSONAL

Born Alana Griner on November 2, 1987, in Valdosta, Ga. ... Hometown is Savannah, Ga. ... Daughter of Richard and Mary Griner ... Majoring in Health Sciences ... Enjoys playing soccer ... Lance Armstrong is a favorite sports personality.

Freshmen Samantha Held and Amaka Ofuani

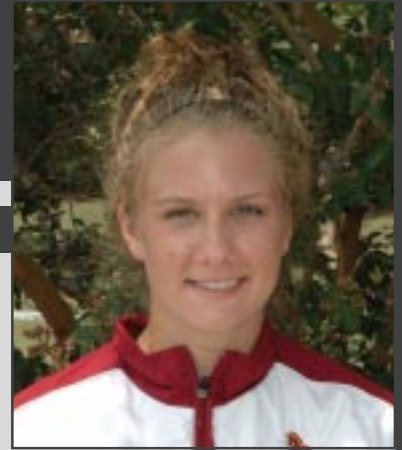


Samantha Held

Freshman Goalkeeper

5-10 • Green Cove Springs, Fla. • Clay HS

13



HIGH SCHOOL

Played for four years at Clay HS in Green Cove Springs, Fla. ... Named two time All-Florida First Coast selection by the *Florida Times Union* ... Four year All-County team member ... Played in the Florida Senior All-Star game in May of 2006 ... All-State selection in 2005 ... Played club soccer for Clay County United with teammate Lyndsi Stricklen, where she helped her team to an appearance at the USYSA U-17 Directors Cup finals in Indianapolis ... Member of the National Honor Society.

PERSONAL

Born Samantha Renee Held on October 27, 1987, in Jacksonville, Fla. ... Hometown is Green Cove Springs, Fla. ... Daughter of Zeke and Cindy Held ... Majoring in biology ... Enjoys surfing, shopping and reading ... Michelle Akers is a favorite sports personality ... Lists her parents as favorite non-sports personalities

Amaka Ofuani

Freshman Forward/Midfielder

5-6 • Tallahassee, Fla. • Lincoln HS

6



HIGH SCHOOL

Played and lettered for four seasons at Lincoln HS in Tallahassee, Fla. ... Earned All-State selection ... Four time All-Big Bend selection by the *Tallahassee Democrat* ... Most Valuable Player junior and senior years ... Served as captain senior year ... Broke school records for most goals in a game (7) and most goals in a high school career (70) ... Played club soccer for Coach Faulconer with Tallahassee United ... Was also a College Board Scholar.

PERSONAL

Born Amaka Sevilla Ofuani on December 31, 1987, in Tallahassee, Fla. ... Hometown is Tallahassee, Fla. ... Daughter of Sharon and Reginald Ofuani ... Majoring in economics ... Enjoys music, playing the piano and the Spanish culture ... Lists Bob Marley as a favorite non-sports personality and Ronaldhino as a favorite sports personality.

Ofuani holds the Lincoln HS record for most career goals

19



Kayley Ralton

Freshman Defender

5-7 • Edinburgh, Scotland • Royal HS

8



IN SCOTLAND

Member of the Scotland U19 and U17 national teams ... Captained the U17 in tournament victories against Wales, USA, Holland and Republic of Ireland ... As a member of the Scotland U19 team she represented Scotland in the first stage and second stage European Championships.

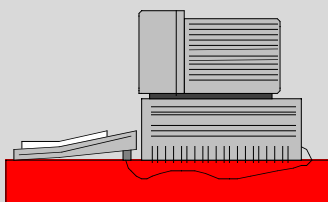
HIGH SCHOOL

Attended Royal High School in Edinburgh, Scotland where she was a three time player of the year.

PERSONAL

Born Kayley Ralton on January 26, 1988, in Edinburgh, Scotland her hometown ... Daughter of Carson and Alex Ralton ... Majoring in history ... Enjoys watching movies, shopping and hanging out with friends ... Lists Stephen Gerrard as a favorite sports personality.

AASU Women's Soccer Live On The Web !



The Armstrong Atlantic State athletic department will bring you every shot of the AASU women's soccer home schedule right to your computer in 2006 as the Pirates stream live audio and video of all ten home matches over the Internet.

Fans will be able to catch all of the action from the official Website of AASU Athletics, www.athletics.armstrong.edu, using the power of Windows Media Player.

AASU debuted its Internet broadcasting system in 2001 with incredible success as every home men's and women's basketball game, volleyball match, the majority of the Pirates' baseball and softball games and the NCAA Mid-Atlantic Women's Tennis Regional were available last season.

For more information about the AASU Web broadcast, visit the AASU Athletics Web Site or contact Director of Sports Communications Chad Jackson at jacksoch@mail.armstrong.edu

AASU Media Services



The Office of Sports Communications at Armstrong Atlantic State University thank you for your interest in AASU women's soccer. Should you need any further assistance in covering the Pirates during the 2006 season, please do not hesitate to contact us:

Office of Sports Communications
Armstrong Atlantic State University
Chad Jackson, Director
Jay Carmichael, Student Assistant
11935 Abercorn Street
Savannah, GA 31419
Phone: (912) 961-3255
Fax: (912) 921-5571
email: jacksoch@mail.armstrong.edu

Thanks again for your coverage of the Pirates throughout the season.

Chad Jackson
Director of Sports Communications

Media Credentials

Media credentials for photo and press are not needed and seating for media members can be arranged in advance at center field. Requests for seating must be made in advance to Director of Sports Communications Chad Jackson via fax, email or phone at least two (2) days prior to each contest.

Pre-Game Interviews

Requests for interviews with Armstrong Atlantic State players and coaches should be directed to Director of Sports Communications Chad Jackson. Arrangements will be made for players to call media members if a phone interview is requested - it is the AASU Athletic Department policy not to publicize student-athlete's home phone numbers.

Game Services

The Office of Sports Communications staff will furnish media representatives with game programs, pregame notes and statistics, in addition to final game statistics after the conclusion of each match.



Press Area

There is no designated press area at Cingular Field, however arrangements can be made for working space for media in advance. Please contact Chad Jackson prior to a contest if you wish to utilize work space at the field during and after each game.

Photographers can not enter the field of play at any time during a competition, but are free to take shots up to ten minutes prior to

game time. We ask that photographers stay at least three feet behind the end line and from directly behind the goals, but any other part of the Cingular Field can be accessed for photographs during play.

Post-Game Interviews

The Armstrong Atlantic State women's soccer players will be made available on the field at the conclusion of each match. Please remember that media members are not allowed on the field during play.

AASU Local Media Coverage

Print:

Savannah Morning News
Beat Writer: Jim Thomas
Phone: (912) 652-0350
Fax: (912) 525-0796

Broadcast:

WSAV-TV 3 (NBC)
Sports Director: Dave Williams
Phone: (912) 644-6842
WTOG-TV 11 (CBS)
Sports Director: Rick Snow / Chris Clark
Phone: (912) 234-1111
WJCL-TV 22 (ABC) / WTGS-TV 28 (Fox)
Sports Director: Frank Sulkowski
Phone: (912) 921-2222





2005 Peach Belt Conference In Review



2005 Peach Belt Conference Standings

School	PBC Games	Points	All Games	Home	Away	Neut		
Clayton State	6-1-1	.812	19	15-3-2	.800	9-1	5-1-2	1-1
Columbus State	6-1-1	.812	19	15-6-1	.704	7-3-1	8-3	0-0
Armstrong Atlantic	6-2	.750	18	11-8	.579	7-1	3-6	1-1
UNC Pembroke	5-2-1	.688	16	13-6-1	.675	8-0-1	5-6	0-0
Lander	3-2-3	.562	12	6-3	.417	4-3-2	2-6-1	0-0
GC&SU	3-3-2	.500	11	9-6-2	.588	5-4	4-2-2	0-0
USC Upstate	2-6	.250	6	4-13-2	.263	2-5-1	1-8	1-0-1
North Georgia	1-7	.125	3	3-12-1	.219	2-2-1	1-9	0-1
USC Aiken	0-8	.000	0	3-14	.176	2-7	1-6	0-0

2005 PBC Statistical Leaders

Goals Scored

Player/School	GP	Goals	Per Game
Olaitan Yusuf, Clayton State	20	21	1.05
Nkese Udoh, Clayton State	19	18	0.95
Kellie Myles, Columbus State	22	15	0.68
Shana Neves, AASU	19	13	0.68
Melanie Cobb, UNC Pembroke	20	13	0.65

Assists

Player/School	GP	Assists	Per Game
Donna Cheyne, AASU	19	14	0.74
Sarah Hawkins, Columbus State	22	9	0.41
Natalie Thomas, GC&SU	15	8	0.53
Shana Neves, AASU	19	8	0.42
Olaitan Yusuf, Clayton State	20	8	0.40

Points Scored

Player/School	GP	G	Ast	Pts	Per Game
Olaitan Yusuf, Clayton State	20	21	8	50	2.50
Nkese Udoh, Clayton State	19	18	7	43	2.26
Kellie Myles, Columbus State	22	15	6	36	1.64
Shana Neves, AASU	19	13	8	34	1.79
Lyndsi Stricklen, AASU	19	12	7	31	1.63

Shots

Player/School	GP	Shots	Per Game
Melanie Cobb, UNC Pembroke	20	89	4.45
Nkese Udoh, Clayton State	19	86	4.53
Olaitan Yusuf, Clayton State	20	75	3.75
Elizabeth Franklin, North Georgia	15	65	4.33
Shana Neves, AASU	19	55	3.32

Saves

Player/School	GP	Saves	Per Game
Diana Wabnitz, USC Upstate	18	141	7.83
Jacquelynn Hart, USC Aiken	17	84	4.94
Michelle Parr, GC&SU	16	83	5.19
Kelly Conarro, North Georgia	14	77	5.50
Judith Chime, Clayton State	20	71	3.55

Goals Against Average

Player/School	GP	GA	Minutes	GAA
Judith Chime, Clayton State	20	12	1845:07	0.59
Hillary Helms, UNC Pembroke	14	14	1015:51	1.24
Monica Sanchez, Columbus St.	22	22	1422:33	1.39
Rachael Hine, Lander	17	29	1590:00	1.64
Michelle Parr, GC&SU	16	26	1419:15	1.65

2005 All-Peach Belt Team

Player	Position	School
Melanie Cobb	Forward	UNC Pembroke
Shana Neves	Forward	Armstrong Atlantic
Nkese Udoh	Forward	Clayton State
Olaitan Yusuf	Forward	Clayton State
Antoinette Anouga	Midfield	Clayton State
Donna Cheyne	Midfield	Armstrong Atlantic
Stacey Copeland	Midfield	Lander
Kellie Myles	Midfield	Columbus State
Tara Clarini-Black	Defense	USC Upstate
Sarah Hawkins	Defense	Columbus State
Megan Honig	Defense	Columbus State
Katie Stokes	Defense	UNC Pembroke
Judith Chime	Goalkeeper	Clayton State
Monica Sanchez	Goalkeeper	Columbus State
Natasha DaCosta	At-Large	USC Aiken
Hayley Ferrell	At-Large	GC&SU
Elizabeth Franklin	At-Large	North Georgia
Kelly Jones	At-Large	UNC Pembroke
Jennifer Powell	At-Large	Clayton State
Lyndsi Stricklen	At-Large	Armstrong Atlantic

Player of the Year: Olaitan Yusuf, Clayton State

Freshmen of the Year: Kellie Myles, Columbus State

Coaches of the Year: Jay Entlich, Columbus State

2005 PBC Tournament Team

Diana Wabnitz, USC Upstate	Jamie Craine, Armstrong Atlantic
Elizabeth Franklin, North Georgia	Kellie Myles, Columbus State
Stacey Copeland, Lander	Sarah Hawkins, Columbus State
Meredith Moran, GC&SU	Brook Snyder, Columbus
Kelly Jones, UNC Pembroke	Jennifer Winslett, Clayton State
Jaime Clarke, UNC Pembroke	Loretta Ashu, Clayton State
Donna Cheyne, Armstrong Atlantic	Cassandra Rapaich, Clayton State
	Nkese Udoh, Clayton State

Most Valuable Player: Olaitan Yusuf, Clayton State

2005 PBC Player of the Week

Date	Player of the Week	School
Sept. 7	Nkese Udoh	Clayton State
Sept. 13	Olaitan Yusuf	Clayton State
Sept. 20	Meredith Moran	GC&SU
Sept. 27	Donna Cheyne	Armstrong Atlantic
Oct. 4	Olaitan Yusuf	Clayton State
Oct. 11	Sarah Hawkins	Columbus State
Oct. 18	Judith Chime	Clayton State
Oct. 24	Kellie Myles	Columbus State
Nov. 1	Nkese Udoh	Clayton State

22 AASU placed three players on the All-PBC women's soccer squad in 2006

2006 PBC Composite Schedule



AUGUST

24	North Georgia at Limestone	3:00
	Chowan at UNC Pembroke	4:00
	Newberry at USC Aiken	7:00
25	Columbus State vs. Florida Southern (Tampa, Fla.)	5:00
	Armstrong Atlantic State at Tampa	7:00
26	GC&SU at Belmont Abbey	2:00
	Anderson at Lander	2:00
	Georgia Southwestern at USC Upstate	4:30
	Clayton State at Wingate	7:00
	Lenoir-Rhyne at UNC Pembroke	7:00
27	Armstrong Atlantic State vs. Fla. Southern (Tampa, Fla.)	12:00
	GC&SU at St. Andrews Presbyterian	1:00
	Columbus State at Tampa	2:00
	North Alabama at North Georgia	4:00
29	Limestone at USC Aiken	5:00
	Coker at UNC Pembroke	5:00
	Montevallo at North Georgia	6:00
	Lander at Erskine	7:00
31	USC Aiken at Brewton-Parker	5:00
	Erskine at GC&SU	7:00

SEPTEMBER

1	Newberry at Columbus State	5:00
	Lincoln Memorial at USC Upstate	5:00
	Presbyterian at Armstrong Atlantic State	5:00
2	Erskine at North Georgia	1:00
	East Stroudsburg at USC Upstate	4:00
	UNC Pembroke at Pfeiffer	4:00
	Queens at USC Aiken	5:00
3	Clayton State at Carson-Newman	2:00
	West Georgia at Columbus State	2:30
4	USC Aiken at Pfeiffer	4:00
	Armstrong Atlantic State at Erskine	7:00
5	Belmont Abbey at USC Upstate	7:00
6	Georgia Southwestern at Columbus State	4:00
	UNC Pembroke at Mt. Olive	4:30
	St. Andrews at USC Aiken	6:30
	Wingate at Lander	7:00
8	Clayton State at North Georgia	4:00
	USC Aiken at GC&SU	7:00
9	UNC Pembroke at Columbus State	1:00
	Columbia College at Georgia Southwestern	4:00
	Armstrong Atlantic State at Lander	4:00
	USC Upstate at Carson-Newman	7:00
10	Alabama-Huntsville at North Georgia	5:00
	Catawba at Clayton State	5:00
11	USC Aiken at Charleston Southern	4:00
12	Armstrong Atlantic State at Catawba	5:00
	Newberry at USC Upstate	7:00
	Wingate at UNC Pembroke	7:00
13	Olgethorpe at North Georgia	4:00
	Clayton State at Columbus State	5:00
	Lander at GC&SU	7:00
	Presbyterian at USC Aiken	7:00
15	Columbus State at Brevard	4:00
16	GC&SU at UNC Pembroke	1:00
	USC Aiken at Georgia Southwestern	2:00
	North Georgia at Armstrong Atlantic State	4:00
	Lander at USC Upstate	4:30
	Tusculum at Clayton State	5:00
17	Columbus State at Lincoln Memorial	1:00
19	North Georgia at Georgia Southwestern	2:00
	USC Upstate at Lenoir-Rhyne	4:30
	USC Aiken at Wingate	7:00
	UNC Pembroke at Catawba	7:00
20	Columbus State at Armstrong Atlantic State	4:00
	Lander at Mars Hill	7:00
22	Thomas at Georgia Southwestern	2:00
	Columbus State at USC Aiken	5:00
	GC&SU at USC Upstate	7:00
23	UNC Pembroke at North Georgia	1:00

24	Lincoln Memorial at Lander	7:00
	Clayton State at Armstrong Atlantic State	2:00
25	USC Aiken at Belmont Abbey	2:00
26	Lander at North Greenville	3:00
	North Georgia at Converse	5:00
	Savannah Art & Design at Armstrong Atlantic State	5:00
	Mars Hill at USC Upstate	7:00
27	UNC Pembroke at Georgia Southwestern	1:00
	Newberry at Clayton State	6:00
	Columbus State at GC&SU	7:00
28	Anderson at North Georgia	6:00
29	North Alabama at GC&SU	7:00
30	Lenoir-Rhyne at Columbus State	1:00
	Webber at Georgia Southwestern	3:00
	North Georgia at Thomas	4:30
	UNC Pembroke at USC Upstate	4:30
	Armstrong Atlantic State at USC Aiken	5:30
	Lander at Clayton State	7:30

OCTOBER

1	Montevallo at GC&SU	2:00
2	Presbyterian at Clayton State	7:00
3	USC Upstate at Armstrong Atlantic State	4:00
	Barton at UNC Pembroke	7:00
4	Columbus State at North Georgia	4:00
	Lander at USC Aiken	5:00
	GC&SU at Clayton State	7:00
7	Georgia Southwestern at Lander	1:00
	Armstrong Atlantic State at Newberry	2:00
	Clayton State at UNC Pembroke	3:30
	USC Upstate at Columbus State	4:00
	North Georgia at USC Aiken	5:00
8	Georgia Southwestern at GC&SU	2:00
9	Columbus State at Erskine	4:00
	Armstrong Atlantic State at Tusculum	4:00
11	Lander at Limestone	1:30
	Columbus State at Catawba	5:00
	Georgia Southwestern at Clayton State	5:00
	USC Upstate at Tusculum	7:00
13	Anderson at Armstrong Atlantic State	4:00
	Mars Hill at Columbus State	5:00
	GC&SU at North Georgia	6:00
14	UNC Pembroke at Lander	1:00
	Armstrong Atlantic State at Georgia Southwestern	3:00
	Lincoln Memorial at Clayton State	3:30
	USC Upstate at USC Aiken	5:00
15	GC&SU at Alabama-Huntsville	2:00
16	Tusculum at UNC Pembroke	7:00
18	Brenau at Georgia Southwestern	3:00
	Columbus State at Lander	4:00
	USC Upstate at North Georgia	4:30
	Armstrong Atlantic State at UNC Pembroke	7:00
	USC Aiken at Clayton State	7:30
20	GC&SU at Armstrong Atlantic State	4:00
21	North Georgia at Lander	1:00
	King College at Georgia Southwestern	1:00
	Clayton State at USC Upstate	4:30
	USC Aiken at UNC Pembroke	4:30
	Columbus State at Tusculum	7:30
22	Belmont Abbey at Armstrong Atlantic State	2:00
	Thomas at GC&SU	4:00
25	PBC Tournament First Round	TBA
28-29	PBC Tournament: Championships	TBA

NOVEMBER

3-5	NCAA Championships - 1st, 2nd Rounds	TBA
11	Quarterfinals	TBA
16-18	National Championships (Pensacola, Fla.)	TBA

2006 Non-Conference Opponents

Anderson

Fri., Oct. 13, 4:00 p.m.

Location: Anderson, SC
Enrollment: 10,250
Affiliation: NCAA DII
Nickname: Trojans
Colors: Gold and Black
2005 Record: 3-12-2
CVAC: 2-8-1
Head Coach: Abbey Crumpton
Overall Record: N/A
Record at AC: 1st year
Assistant Coach: N/A
Phone: (864) 231-2012
SID: Cobb Oxford
Phone: (864) 231-2097
Fax: (864) 226-8895
Web: www.ac.edu

Belmont Abbey

Sun., Oct. 22, 2:00 p.m.

Location: Belmont, NC
Enrollment: 1,000
Affiliation: NCAA DII
Nickname: Crusaders
Colors: Red and White
2005 Record: 18-4
CVAC: 9-1
Head Coach: Glad Bugariu
Overall Record: 18-4 (2)
Record at BAC: 18-4 (2)
Assistant Coaches:
 Tatum Borque
Phone: (704) 825-6243
SID: Matt Kline
Phone: (704) 825-6541
Fax: (704) 825-6570
Web: www.abbeyathletics.com

Catawba

@ Tues., Sept. 12, 5:00 p.m.

Location: Salisbury, NC
Enrollment: 1,300
Affiliation: NCAA DII
Nickname: Indians
Colors: Navy Blue and White
2005 Record: 16-4-1
SAC: 6-0-1
Head Coach: John Cullen
Overall Record: 71-20-7 (5)
Record at CAT: 71-20-7 (5)
Assistant Coaches: Scherrie Dalton, Daniel Dudley
Phone: (704) 637-4378
SID: Jimmy Lewis
Phone: (704) 637-4720
Fax: (704) 637-5705
Web: www.goindiansgo.com

Erskine

@ Mon., Sept. 4, 7:00 p.m.

Location: Due West, SC
Enrollment: 5,500
Affiliation: NCAA DII
Nickname: Flying Fleet
Colors: Maroon and Gold
2005 Record: 4-13
CVAC: 2-7-0
Head Coach: Serge Lipovetsky
Overall Record: 4-13 (2)
Record at ERSK: 4-13 (2)
Assistant Coaches:
Phone: (864) 379-8706
SID: Tiffany Mast
Phone: (864) 379-8799
Fax: (864) 379-2197
Web: erskinecollegesports.com

Fla. Southern

Sun., Aug. 27, Noon
(@ Tampa, Fla.)

Location: Lakeland, FL
Enrollment: 1,800
Affiliation: NCAA DII
Nickname: Moccasins
Colors: Scarlet and White
2005 Record: 4-10-2
SSC: 1-7 (t8th)
Head Coach: Ben Strawbridge
Overall Record: 1st year
Record at FSC: 1st year
Assistant Coach: none
Phone: (863) 680-4258
SID: Bill Turnage
Phone: (863) 680-4256
Fax: (863) 680-3953
Web: www.flsouthern.edu

Newberry

@ Sat., Oct. 7, 2:00 p.m.

Location: Newberry, SC
Enrollment: 850
Affiliation: NCAA DII
Nickname: Indians
Colors: Scarlet and Gray
2005 Record: 7-7-2
South Atlantic: 3-4 (t4th)
Head Coach: Juan Pablo Favero
Overall Record: 68-50-9 (7)
Record at NC: 24-24-4 (3)
Assistant Coach: Shelly Osmond
Phone: (803) 321-5656
SID: Josh Manck
Phone: (803) 321-5667
Fax: (803) 321-5169
Web: www.newberryindians.com

Presbyterian

Fri., Sept 1 5:00 p.m.

Location: Clinton, SC
Enrollment: 1,191
Affiliation: NCAA DII
Nickname: Blue Hose
Colors: Blue and Garnet
2005 Record: 6-9-1
South Atlantic: 1-5-1
Head Coach: Brian Purcell
Overall Record: 193-89-11 (16)
Record at PC: 193-89-11 (16)
Assistant Coach: Rob Clapper
Phone: (864) 833-8327
SID: Nairem Moran
Phone: (864) 833-8252
Fax: (864) 833-8323
Web: www.presby.edu

SCAD

Tues., Sept. 26 5:00 p.m.

Location: Savannah, GA
Enrollment: 7,000
Affiliation: NAIA
Nickname: Bees
Colors: Black and Gold
2005 Record: 11-8-1
Florida Sun: 5-0-1
Head Coach: Andy Williamson
Overall Record: 41-52-10
Record at SCAD: 40-38-10
Assistant Coach: Rebecca Witters
Phone: (912) 525-4777
SID: Michael MacEachern
Phone: (912) 525-4815
Fax: (912) 898-8825
Web: www.scadathletics.com

Tampa

@ Fri., Aug. 25 7:00 p.m.

Location: Tampa, FL
Enrollment: 5,125
Affiliation: NCAA DII
Nickname: Buccaneers
Colors: Red, Gold, Black
2005 Record: 14-2-2
Sunshine State: 7-0-1 (1st)
Head Coach: Bobby Johnston
Overall Record: 57-32-6
Record at UT: 51-20-6 (4)
Assistant Coaches: Gerry Lucey
Phone: (813) 253-6240
SID: Thomas Kolbe
Phone: (813) 253-6241
Fax: (813) 253-6288
Web: www.utampa.edu

Tusculum

@ Mon., Oct. 9 4:00 p.m.

Location: Greeneville, Tenn.
Enrollment: 2,300
Affiliation: NCAA DII
Nickname: Pioneers
Colors: Orange and Black
2005 Record: 12-6-2
SAC: 3-3-1 (3rd)
Head Coach: Mike Joy
Overall Record: 201-70-14 (13)
Record at TC: 115-45-9 (8)
Assistant Coach: None
Phone: (423) 636-7321
SID: Dom Donnelly
Phone: (423) 636-7326
Fax: (423) 636-7370
Web: www.tusculum.edu

2006 PBC Opponents



Clayton State

Sun., Sept. 24 2:00 p.m.

Location: Morrow, GA
Enrollment: 6,000
Nickname: Lakers
Colors: Blue and Orange
2005 Record: 15-3-2
Peach Belt: 6-1-1 / 11st
Starters Returning/Lost: 10/1
Letterwinners Returning: 16

Head Coach: Totty Totty
Overall Record: 75-63-11 (8)
Record at CSU: 75-63-11 (8)
Assistant Coaches:
 John Hemphill, Nkiru Okosieme, Jocelyn Okoro
Phone: (770) 960-4261
SID: Lee Wright
Phone: (678) 466-4681
Fax: (678) 466-4699
Web: athletics.clayton.edu

Lander

@ Sat., Sept. 9 4:00 p.m.

Location: Greenwood, SC
Enrollment: 2,900
Nickname: Lady Bearcats
Colors: Royal Blue and Gold
2005 Record: 6-9-3
Peach Belt: 3-2-3 / 5th
Starters Returning/Lost: 10/1
Letterwinners Ret/Lost: 12/3

Head Coach: Chris Ayer
Overall Record: N/A
Record at LU: 1st year
Assistant Coach: N/A
Phone: (864) 388-8921
SID: Bob Stoner
Phone: (864) 388-8962
Fax: (864) 388-8999
Web: www.landerbearcats.com

Columbus State

Wed., Sept. 20 4:00 p.m.

Location: Columbus, GA
Enrollment: 7,000
Nickname: Cougars
Colors: Red, White & Blue
2005 Record: 15-6-1
Peach Belt: 6-1 / 11st
Starters Returning/Lost: 6/5
Letterwinners Ret/Lost: 12/10

Head Coach: Jay Entlich
Overall Record: 41-30-10 (4)
Record at CSU: 9-10-6 (2)
Assistant Coach: Ryan Crabbe
Phone: (706) 568-2446
SID: Mike Peacock
Phone: (706) 569-3434
Fax: (706) 569-2594
Web: cougarsports.colstate.edu

UNC Pembroke

@ Wed., Oct. 18 7:00 p.m.

Location: Pembroke, NC
Enrollment: 5,632
Nickname: Braves
Colors: Black and Gold
2005 Record: 13-6-1
Peach Belt: 5-2-1 / 4th
Starters Returning/Lost: 7/4
Letterwinners Ret/Lost: 13/10

Head Coach: Lars Andersson
Overall Record: 49-36-8 (5)
Record at UNCP: 49-36-8 (5)
Assistant Coach:
 Rachel Moreland
Phone: (910) 521-6442
SID: Todd Anderson
Phone: (910) 521-6371
Fax: (910) 521-6551
Web: www.uncp.edu

USC Upstate

Tues., Oct. 3 7:00 p.m.

Location: Spartanburg, SC
Enrollment: 4,500
Nickname: Spartans
Colors: Green, White & Black
2005 Record: 4-13-2
Peach Belt: 2-6-0 / 7th
Starters Returning/Lost: 6/5
Letterwinners Ret/Lost: 8/9

Head Coach: Kendall Reyes
Overall Record: 72-66-13 (8)
Record at SCUP: 57-46-11 (6)
Assistant Coach: Anna Baker
Phone: (864) 503-5128
SID: Bill English
Phone: (864) 503-5129
Fax: (864) 503-5127
Web: www.uscupstate.edu

GC&SU

Fri., Oct. 20 4:00 p.m.

Location: Milledgeville, GA
Enrollment: 5,500
Nickname: Bobcats
Colors: Green and Blue
2005 Record: 9-6-2
Peach Belt: 3-3-2 / 6th
Starters Returning/Lost: 9/3
Letterwinners Ret/Lost: 20/8

Head Coach: Robert Parr
Overall Record: 14-16-4 (2)
Record at GCSU: 14-16-4 (2)
Assistant Coaches: None
Phone: (478) 445-4011
SID: Brad Muller
Phone: (478) 445-1779
Fax: (478) 445-1790
Web: www.gcsu.edu

North Georgia

Sat, Sept. 16 4:00 p.m.

Location: Dahlonega, GA
Enrollment: 4,765
Nickname: Saints
Colors: Blue and White
2005 Record: 3-12-1
Peach Belt: 1-7-0 / 8th
Starters Returning/Lost: 8/3
Letterwinners Ret/Lost: 10/9

Head Coach: Chris Adams
Overall Record: 23-28-5 (3)
Record at NGA: 23-28-5 (3)
Assistant Coaches: Jonathan Harvey
Phone: (706) 867-2849
SID: Travis Jarome
Phone: (706) 867-3250
Fax: (706) 867-2865
Web: www.ngcsu.edu

PBC Women's Soccer Champions

2000	North Florida
2001	USC Spartanburg
2002	Kennesaw State
2003	Kennesaw State
2004	Francis Marion
2005	Clayton State
	Columbus State

Ga. Southwestern

@ Sat., Oct. 14 3:00 p.m.

Location: Americus, GA
Enrollment: 2,094
Affiliation: DII
Nickname: Hurricanes
Colors: Navy Blue and Gold
2005 Record: 4-11-2
Peach Belt: 1st season

Head Coach: Barry Kaplan
Overall Record: 4-25-2 (2)
Record at GSW: 4-25-2 (2)
Assistant Coach: Kate McHenry
Phone: (229) 931-2936
SID: Rick Burgess
Phone: (229) 942-4498
Fax: (229) 931-2143
Web: www.gsw.edu

USC Aiken

@ Sat., Sept. 30 5:30 p.m.

Location: Aiken, SC
Enrollment: 3,258
Nickname: Lady Pacers
Colors: Cardinal, Navy & White
2005 Record: 3-14
Peach Belt: 0-8 (9th)
Starters Returning/Lost: 6/5
Letterwinners Ret/Lost: 8/9

Head Coach: Sue Vodicka
Overall Record: 10-23-2 (2)
Record at USCA: 3-14
Assistant Coaches: N/A
Phone: (803) 641-3651
SID: Brad Fields
Phone: (803) 641-3252
Fax: (803) 641-3759
Web: www.pacersports.com



2005 Season Review

The Armstrong Atlantic women's soccer program burst upon the Southeastern soccer scene in its inaugural season, finishing just one point out of first place in the Peach Belt standings and advancing to the PBC Tournament semifinals in just its first year of competition.

The Pirates finished an exciting first year with an 11-8 overall record and a 6-2 mark in the Peach Belt Conference.

Among the program's historic firsts: the Pirates picked up the program's first win with a 6-2 victory over former NCAA DII national champion Christian Brothers on August 27 - featuring the first-ever goal scored in program history by Shana Neves in the 33rd minute of that contest. AASU picked up its first home win with a hard-fought 2-1 victory over cross-town rival Savannah College of Art & Design on September 6. AASU won its first Peach Belt Conference game with a 5-2 win over Lander on September 17, then picked up its first shutout with an 8-0 blanking of Georgia Southwestern State on September 19. The Pirates collected their first overtime win on September 24 when Donna Cheyne buried a goal in the second overtime period against UNC Pembroke, giving AASU a key 3-2 victory.

The Pirates also made some noise in the Peach Belt

Conference tournament, hosting a first-round game and collecting an impressive 7-1 win over GC&SU, the second-most goals scored in a PBC Tournament game in league history. AASU also picked up wins over Erskine, North Georgia, USC Upstate and USC Aiken during the regular season.

Head coach Eric Faulconer's squad featured a high-octane offense all season long that led the Peach Belt Conference in points, assists (49) and goals per game (3.16), a number that also ranked 12th in NCAA Division II. Freshmen forwards Shana Neves (13 goals) and Lyndsi



Senior Donna Cheyne ranked sixth nationally with .74 assists per game, earning All-PBC and NSCAA All-Region honors as a junior.

Stricklen (12 goals) each earned All-PBC honors in their debut seasons for the Pirates and ranked among the league's top goal scorers. Neves ranked fifth in the Peach Belt in shots, fourth in points, tied for fourth in goals and tied for third in assists, while Stricklen ranked fifth in points, tied for sixth in goals, shots and assists.

Junior Donna Cheyne, who followed coach Faulconer to AASU from Thomas University, excelled in the midfield as the team captain, dishing out a Peach Belt-leading 14 assists and earning the program's first All-Region honors, being named to the NSCAA's South Atlantic third team. Cheyne also earned a spot on the Peach Belt All-Tournament team, along with freshman midfielder Jamie Craine, who came on strong at the end of the season to score four goals in the Pirates' two games against GC&SU.

Senior Claire McCombe, a four-year player for coach Faulconer, enjoyed a fine season as well for the Pirates as she collected nine goals and five assists, ranking sixth in the PBC in shots and tying for 10th in points and goals scored. McCombe, the only senior on the inaugural Pirate soccer squad, finished her collegiate career with 35 goals and 18 assists in her four years with Thomas University and Armstrong Atlantic.

Faulconer and the Pirates finished just out of the NCAA Southeast region rankings in 2005 and will look to make an appearance in 2006 with 13 players from the inaugural squad returning next season.



Shana Neves led the team with 13 goals and 34 points in 2005, earning All-PBC honors as a forward.

2005 AASU Results and Statistics

Game Results

**Overall: 11-8 Home: 7-1 Away: 3-6 Neutral: 1-1
Peach Belt Conference: 6-2**

Date	Opponent	Score
8/19/05	~ Brewton-Parker	W 4-1
8/21/05	~ at North Florida	L 5-0
8/25/05	at West Georgia	L 4-0
8/27/05	vs. Christian Brothers	W 6-2
8/30/05	at Presbyterian	L 2-1 2 OT
9/6/05	Savannah College of Art & Design	W 2-1
9/9/05	at Saint Leo	L 5-2
9/11/05	at Rollins	L 3-0
9/17/05	* Lander	W 5-2
9/19/05	Georgia Southwestern State	W 8-0
9/24/05	* UNC Pembroke	W 3-2 2 OT
9/27/05	at Belmont Abbey	L 4-3
10/1/05	* at Clayton State	L 2-0
10/4/05	Erskine	W 4-2
10/10/05	* USC Aiken	W 6-0
10/12/05	* at North Georgia	W 5-3
10/18/05	* at USC Upstate	W 3-0
10/21/05	* Columbus State	L 4-0
10/29/05	* at GC&SU	W 4-3
11/1/05	# vs. GC&SU	W 7-1
11/4/05	\$ vs. Clayton State	L 5-1

~ - Exhibition Game

* - PBC Game

- PBC Championships First Round (Savannah, Ga.)

\$ - PBC Championships Final Four (Columbus, Ga.)

AASU vs. Opponents

Statistics	AASU	Opponents
SHOT STATISTICS		
Goals-Shot attempts	60-347	45-252
Shot pct.	.173	.179
Shots on goal-Attempts	181-347	132-252
SOG pct	.522	.524
Goals/Game	3.2	2.4
Shots/Game	18.3	13.3
Assists	49	32
GOAL BREAKDOWN		
Total Goals	60	45
Penalty	2	3
Unassisted	11	17
Overtime	1	1
CORNER KICKS		
	66	91
PENALTY KICKS		
	2-2	3-4
PENALTIES		
Fouls	176	170
Yellow cards	11	9
Red cards	0	1
ATTENDANCE		
Total	1052	871
Dates/Avg Per Date	8/132	9/97
Neutral Site #/Avg	2/62	

Game-by-Game Statistics

Date	Opponent	Score	Goals	Assists	Points	Shot	Shot%	SOG	SOG%
8/25/05	at West Georgia	0-4	0	0	0	12	.000	5	.417
8/27/05	vs Christian Brothers	6-2	6	3	15	16	.375	13	.812
8/30/05	at Presbyterian College	1-2	1	0	2	12	.083	4	.333
9/6/05	SCAD	2-1	2	2	6	23	.087	15	.652
9/9/05	at Saint Leo University	2-5	2	2	6	8	.250	6	.750
9/11/05	at Rollins	0-3	0	0	0	3	.000	2	.667
9/17/05	Lander	5-2	5	4	14	23	.217	10	.435
9/19/05	Georgia Southwestern	8-0	8	5	21	50	.160	27	.540
9/24/05	UNC Pembroke	3-2	3	3	9	30	.100	8	.267
9/27/05	at Belmont Abbey	3-4	3	2	8	8	.375	8	1.000
10/1/05	at Clayton State	0-2	0	0	0	12	.000	3	.250
10/4/05	Erskine	4-2	4	3	11	28	.143	13	.464
10/10/05	USC Aiken	6-0	6	7	19	26	.231	12	.462
10/12/05	at North Georgia	5-3	5	4	14	16	.312	11	.688
10/18/05	at USC Upstate	3-0	3	4	10	20	.150	11	.550
10/21/05	Columbus State	0-4	0	0	0	5	.000	1	.200
10/29/05	at Ga. Col. & St. Univ..	4-3	4	5	13	20	.200	13	.650
11/1/05	Ga. Col. & St. Univ.	7-1	7	5	19	22	.318	13	.591
11/4/05	vs Clayton State	1-5	1	0	2	13	.077	6	.462
Armstrong Atlantic		60-45	60	49	169	347	.173	181	.522

The Pirates led the PBC and ranked 12th in NCAA II in goals scored

27

2005 Individual Statistics and All-Time Records



2005 Individual Statistics

Player	GP-GS	Minutes	Goal	Assists	Points	Shots	Shot%	SOG	SOG%
Shana Neves	19-18	974	13	8	34	63	.206	34	.540
Lyndsi Stricklen	19-19	1095	12	7	31	55	.218	32	.582
Donna Cheyne	19-19	1413	8	14	30	46	.174	23	.500
Claire McCombe	19-19	1383	9	5	23	55	.164	23	.418
Jamie Craine	19-19	1282	7	1	15	27	.259	15	.556
Aubrie Roberts	18-4	530	5	5	15	17	.294	10	.588
Jessica Chipple	19-19	1430	2	3	7	24	.083	10	.417
Whitney Wise	19-1	454	1	2	4	11	.091	4	.364
Holly Grulich	16-2	478	1	1	3	5	.200	3	.600
Ashley Brown	18-3	467	0	3	3	6	.000	3	.500
Emily Latner	18-12	974	1	0	2	8	.125	3	.375
Candice Modlinski	19-16	1462	1	0	2	7	.143	4	.571
Maggie Kennedy	19-5	697	0	0	0	7	.000	6	.857
Jennifer Brian	19-19	1466	0	0	0	6	.000	4	.667
Chelsea Kaiser	15-15	960	0	0	0	4	.000	4	1.000
Danielle Pickell	11-0	129	0	0	0	3	.000	2	.667
Erin Lariscy	16-0	258	0	0	0	2	.000	0	.000
Tana Griffiths	3-0	35	0	0	0	1	.000	1	1.000
Nyisha Nelson	10-0	89	0	0	0	0	.000	0	.000
Anna Goolsby	1-0	12	0	0	0	0	.000	0	.000
Total	19	-	60	49	169	347	.173	181	.522

Goalkeeper	GP-GS	Minutes	GA	Avg	Saves	Pct	Wins	Loss	Ties	Shutouts
Tarra Kohler	4-4	340:02	8	2.12	17	.680	2	2	0	0
Lisa Gray	18-15	1405:44	37	2.37	66	.641	9	6	0	3
Total	19	1745:46	45	2.32	87	.659	11	8	0	3

All-Time vs. Opponents

Anderson	0-0
Belmont Abbey	0-1
Catawba	0-0
Christian Brothers	1-0
Clayton State	0-2
Columbus State	0-1
Erskine	1-0
Florida Southern	0-0
Georgia College & State University	2-0
Georgia Southwestern State	1-0
Lander	1-0
Newberry	0-0
North Georgia	1-0
Presbyterian	0-1
Rollins	0-1
Saint Leo	0-1
Savannah College of Art & Design	1-0
Tampa	0-0
Tusculum	0-0
UNC Pembroke	1-0
USC Aiken	1-0
USC Upstate	1-0
West Georgia	0-1

Bold Indicates 2006 Opponent

All-Time Roster

B	
Brian, Jennifer (2005)	
Brown, Ashley (2005)	
C	
Chipple, Jessica (2005)	
Cheyne, Donna (2005)	
Craine, Jamie (2005)	
G	
Gray, Lisa (2005)	
Griffiths, Tana (2005)	
Grulich, Holly (2005)	
Goolsby, Anna (2005)	
K	
Kaiser, Chelsea (2005)	
Kennedy, Maggie (2005)	
Kohler, Tarra (2005)	
L	
Lariscy, Erin (2005)	
Latner, Emily (2005)	
M	
McCombe, Claire (2005)	
Modlinski, Candice (2005)	
N	
Nelson, Nyisha (2005)	
Neves, Shana (2005)	
Pickell, Danielle (2005)	
R	
Roberts, Aubrie (2005)	
S	
Stricklen, Lyndsi (2005)	
W	
Wise, Whitney (2005)	

Bold Indicates Members of the 2006 team



Individual and Team Records

Individual Game High Records

Points

6, Donna Cheyne, vs. GC&SU, 11/1/05
6, Aubrie Roberts, vs. Christian Brothers 8/27/05

Goals

2, Claire McCombe, vs USC Aiken, 10/10/05 vs. GC&SU, 11/1/05
2, Jamie Craine, at GC&SU, 10/29/05 vs. GC&SU, 11/1/05
2, Lyndsi Stricklen, vs. Ga. Southwestern, 9/19/05 at North Georgia, 10/12/05
2, Shana Neves, vs. Erskine, 10/4/05 vs USC Aiken, 10/10/05
2, Donna Cheyne, vs. UNC Pembroke, 9/24/05 vs. GC&SU, 11/1/05
2, Aubrie Roberts, vs. Christian Brothers, 8/27/05

Assists

3, Donna Cheyne, vs. USC Aiken, 10/10/05
3, Aubrie Roberts, vs. Lander, 9/17/05

Shots

9, Claire McCombe, vs. UNC Pembroke, 9/24/05

Shots On Goal

5, Lyndsi Stricklen, vs. Erskine, 10/4/05
5, Donna Cheyne, vs. Georgia Southwestern, 9/19/05

Saves

10, Lisa Gray, vs. Lander, 9/17/05

Minutes Played

108, Jennifer Brian, at Presbyterian, 8/30/05 vs. UNC Pembroke, 9/24/05
108, Jessica Chipple, at Presbyterian, 8/30/05 vs. UNC Pembroke, 9/24/05
108, Donna Cheyne, vs. UNC Pembroke, 9/24/05
108, Candice Modlinski, vs. UNC Pembroke, 9/24/05
108, Claire McCombe, vs. UNC Pembroke, 9/24/05
108, Lisa Gray, vs. UNC Pembroke, 9/24/05
108, Tarra Kohler, at Presbyterian, 8/30/05

Individual Season High Records

Points

34, Shana Neves, 2005

Points Per Game

1.79, Shana Neves, 2005

Goals

13, Shana Neves, 2005

Goals Per Game

0.68, Shana Neves, 2005

Unassisted Goals

4, Shana Neves, 2005

Assists

14, Donna Cheyne, 2005

Assists Per Game

0.74, Donna Cheyne, 2005

Shots

63, Shana Neves, 2005

Shots Per Game

3.32, Shana Neves, 2005

Shot Percentage

.294, Aubrie Roberts, 2005

Shots on Goal

34, Shana Neves, 2005

Minutes Played

1620, Jennifer Brian, 2005

Games Played

19, Shana Neves, 2005
Lyndsi Stricklen, 2005
Donna Cheyne, 2005
Claire McCombe, 2005
Jamie Craine, 2005
Jessica Chipple, 2005
Whitney Wise, 2005
Candice Modlinski, 2005
Maggie Kennedy, 2005
Jennifer Brian, 2005

Saves

66, Lisa Gray, 2005

Saves Per Game

4.25, Lisa Gray, 2005

Shutouts

3, Lisa Gray, 2005

Yellow Cards

3, Chelsea Kaiser, 2005

Goals Allowed

5, at Saint Leo University, 9/9/05 vs. Clayton State, 11/4/05

Fouls

16, vs. Lander, 9/17/05

Yellow Cards

4, vs. Lander, 9/17/05

Corner Kicks

6, at Belmont Abbey, 9/27/05 vs. Georgia Southwestern, 9/19/05

Team Season High Records

Points

169 (2005)

Goals

60 (2005)

Unassisted Goals

11 (2005)

Assists

49 (2005)

Shots

347 (2005)

Shot Percentage

.173 (2005)

Shots on Goal

181 (2005)

Minutes Played

17,022 (2005)

Saves

87 (2005)

Saves Percentage

.659 (2005)

Goals Allowed

45 (2005)

Goals Against Average

2.32 (2005)

Fouls

176 (2005)

Corner Kicks

66 (2005)

Team Game High Records

Points

21, vs. Georgia Southwestern, 9/19/05

Goals

8, vs. Georgia Southwestern, 9/19/05

Unassisted Goals

3, vs. Georgia Southwestern, 9/19/05

Assists

7, vs. USC Aiken, 10/10/05

Shots

50, vs. Georgia Southwestern, 9/19/05

Shot Percentage

.375, vs. Christian Brothers, 8/27/05 at Belmont Abbey, 9/27/05

Shots on Goal

27, vs. Georgia Southwestern, 9/19/05

Minutes Played

1186, vs. UNC Pembroke, 9/24/05

Saves

10, vs. Lander, 9/17/05

Saves Percentage

1.000, vs. Georgia Southwestern, 9/19/05 vs. USC Aiken, 10/10/05 at USC Upstate, 10/18/05

Armstrong Atlantic State University Facilities



The Armstrong Atlantic State University's athletic department prides itself on having one of the finest athletic facilities not only in the conference, but in the region.

AASU's Sports Center, completed in July of 1995, immediately became a top basketball complex by hosting the 1998 and 1999 Peach Belt Athletic Conference basketball tournaments.

This 82,000-square-foot multi-purpose building provides expanded academic offerings in spacious, modern surroundings. Students have a three-station computer lab, a 1,965-square-foot weight training/fitness center with 21 Cybex machine exercise stations and a free weight area; four new classrooms, and two 3,535-square-foot activity areas.

AASU's athletic teams play home events in a 4,000-seat arena that contains theater-type seating for all spectators, and also plays host to a wide variety of social and sporting events.

Directly behind the Armstrong Sports Center sits the home fields for the baseball and softball teams.

Pirate Field seats 750 fans for the Armstrong Atlantic State University's highly successful baseball program. Generally regarded as one of the best playing surfaces in the conference, Pirate Field has seen the baseball squad advance to 11 NCAA regionals over the past 19 seasons.

To the west of Pirate Field sits the AASU Softball



Complex, home to the Pirate softball squad.

The Aquatics and Recreation Center serves as the host of the AASU volleyball squad. The 1,000 seat arena has been upgraded with new lighting and air conditioning fixtures and is the sole volleyball-only facility in the Peach Belt Conference. AASU hosted the 2004 PBC Volleyball Championships and hosts an annual in-season tournament, the Chatham Orthopedics Classic.

Cingular Field serves as the home pitch for the AASU soccer squad. The 114 yds. x 72 yds. Tift 419 Bermuda grass pitch that was constructed in early 2005 took the place of the Armstrong Atlantic intramural fields that were nestled behind both the baseball and softball fields. The 350 seat capacity field features covered benches and a row of shrubs along both sidelines. Construction began in August of 2006 of a field house that will service both the AASU soccer and softball squads.

The field house is a 3500-square foot complex that will feature locker rooms, laundry facilities and an athletic training area for the AASU women's soccer and softball programs, as well as provide restrooms and a concessions area for the public. The project represents a major commitment to the Pirates' two youngest sports - the AASU softball program began in 1998, while the AASU women's soccer program just completed its inaugural season in 2005.



AASU Women's Field House



Dr. Spencer Wheeler **Team Physician**

Dr. Spencer Wheeler is the medical director and team physician for Armstrong Atlantic's athletic teams. Dr. Wheeler completed his medical school training at the Medical College of Georgia in 1985, and his orthopaedic training at the University of Florida. Wheeler served two sports medicine fellowships; one at Johns Hopkins Institute and one in Sydney, Australia. Dr. Wheeler served as the head of athletic care in Atlanta for the 1996 Summer Olympics.



Daniel Hinely, MED, LAT, ATC **Head Athletic Trainer**

Daniel Hinely enters his first season as head athletic trainer for the Pirates. A graduate of Valdosta State University in 2003 with a bachelor's degree in Sports Medicine, Hinely became familiar with the Peach Belt Conference by completing his master's degree in physical education from GC&SU in 2005.

Hinely joins AASU from Belmont Abbey College, where he served as an assistant trainer for the 2005-06 season.

While at Belmont Abbey, Hinely provided gameday coverage for women's soccer, men's basketball, men's tennis and lacrosse while helping provide daily training needs to more than 260 student-athletes for the Crusaders. Hinely is certified with the ATC and is a member of both the National Athletic Trainers' Association (NATA) and the Georgia Athletic Trainers' Association (GATA).



Jessica Miller, ATC **Assistant Athletic Trainer**

Jessica Miller enters her first season as an Assistant in the AASU Athletic Training Department. Miller will also serve as part time physical education instructor.

A member of the National Athletic Trainer's Association, Miller received her associate's degree in physical education from Ricks College in Rexburg, Idaho. Miller graduated from Brigham Young University with her bachelor's of science in exercise science in April 2005. She recently graduated from Indiana State University with a masters of science in athletic training in July 2006.

Prior to Armstrong Atlantic Miller served as graduate assistant at Indiana State University. She is CPR/AED professional rescuer certified, first aid certified, a licensed athletic trainer and fluent in Spanish.



Amber Mack **Graduate Assistant** **Athletic Trainer**



Bachelor's Degrees

Applied Physics
 Art
 Art Education
 Biology
 Chemistry
 Communicative Disorders
 Computer Science
 Criminal Justice
 Dental Hygiene Education
 Early Childhood Education
 Economics
 English
 Fine Arts
 General Studies
 Health Science
 Health and Physical Education
 History
 Information Technology
 Law & Society
 Mathematics
 Medical Technology
 Middle Grades Education
 Music
 Music Education
 Nursing
 Political Science
 Psychology
 Radiologic Services
 Respiratory Therapy
 Spanish
 Special Education
 Theater

Academics

Armstrong Atlantic State University tries to keep the term "student-athlete" in perspective. At AASU, academic pursuits come first and athletics second. The Pirate coaching staff, along with the entire Athletic Department, continually works to help the student-athlete meet the challenges that they face on and off the playing surface.

Guidance is provided to help the student-athlete bridge the gap from college life to professional life in the working world. It is important that each young person is presented with the skills to make meaningful contributions to their communities.

Armstrong Atlantic State's coaches have made a strong commitment to see that every student-athlete's education is put first. The goal is to give every student-athlete the opportunity to complete their undergraduate degree and meet the challenges of the "real world."

AASU Student Organizations

<p>AASU Hockey Club AASU Physics Club and Society of Physics Students AASU Radiologic Sciences Student Assn. AASU Student Public Health Association African Caribbean Student Organization Alpha Eta Alpha Kappa Alpha Sorority Inc. Alpha Phi Omega Alpha Sigma Tau Anime Club American Go Association Armstrong Association of Nursing Students American Chemical Society American Dental Hygiene Association Armstrong Ebony Coalition Armstrong Environmental Coalition Armstrong Biological Society, Tri-Beta Armstrong Economics Club Armstrong Leadership Circle Association for Computer Machinery Astronomy Club Baptist Student Union Biology Club Cercle Francais Chi Theta Kappa College Democrats College Republicans Delta Sigma Theta Delta Zeta Xi E.B. Twitmeyer Society (Psychology Club) Feminist Majority Leadership Alliance Generation of Faith Ministries Georgia Armstrong Middle Education Students Georgia Association of Educators Gospel Choir Hispanic Outreach and Leadership at Armstrong (HOLA) Honors Student Organization Joel H. Hildebrandt Chemistry Society Inkwell (Student Newspaper)</p>	<p>International Student Organization Kappa Alpha Psi Kappa Delta Pi Kappa Sigma Karate Club Mathematical Association Medical Technologies Society Model United Nations Team Music Educators National Conference Muslim Students Association NAACP National Student Speech, Language and Hearing Association New Generation Campus Ministries Newman Club Phi Alpha Delta Phi Alpha Theta Phi Beta Sigma Phi Epsilon Kappa Philosophical Debate Group Physical Therapy Club Pi Gamma Mu Pi Mu Epsilon Political Science Club Respiratory Therapy Club Rho Tau (Pre-Physical Therapy) Rotaract Science Fiction Fantasy Club Sigma Sigma Sigma Sigma Tau Delta Sigma Theta Tau Soccer Club Student Chapter of the National Art Education Association Student Council for Exceptional Children Student Engineering Society Theta Xi Alpha Unity and Diversity League Wesley Fellowship Women of Worth Xi Omega Pi</p>
---	--

Master's Degrees

Adult Education
 Communicative Disorders
 Computer Science
 Criminal Justice
 Early Childhood Education
 Health Services Administration
 History
 Liberal and Professional Studies
 Middle Grades Education
 Nursing
 Physical Therapy
 Public Health
 Special Education
 Sports Medicine

This Is Savannah



Historic Savannah, Georgia, is located on the Atlantic Coast, at the confluence of the Savannah River and the Atlantic Ocean. Throughout its history, there has been one adjective consistently used to describe Savannah: beautiful.

The reason? There's something about the unique beauty of Savannah that cannot be forgotten. Streets with canopies of moss-laden trees are honored venues for scores of historic homes. The town squares that Savannah's founding father, James Oglethorpe, laid out as public meeting places are now treasured "pocket parks" located throughout the downtown area.

A renovated waterfront area serves as the hub for shopping and entertainment. Nearby sandy beaches draw streams of visitors with persistent cool breezes and the endless lure of the rolling sea. Finally, there's an indescribable - but readily discernible - feeling in the air that pervades Savannah, a kind of "laid back" approach to the world, a "rootedness" that makes living or working in Savannah an experience second to none.

By way of affirmation, *Le Monde*, the leading French newspaper, called Savannah "the most beautiful city in North America."

Savannah has recently captured the imagination of a nation through its history and its appearance in several feature films, including "Glory," "Forrest Gump," "Something to Talk About," "Midnight In The Garden of Good and Evil" and the 2000 hit film "The Legend of Bagger Vance," starring Will Smith and



Matt Damon. Also, Savannah hosted the yachting events of the 1996 Summer Olympics and most recently served as the media home for the G-8 Summit. As a result, tourism has become one of the leading industries in the area.

Savannah hosts over six million tourists each year. Tourism impacts the Savannah area by more than \$634 million. The city boasts over 7,000 rooms and more than 100 restaurants as folks have learned that Savannah is more than just a convenient rest stop on the interstate to Florida.

The climate of Savannah features warm, and sometimes hot, weather for most of the year. There are seven months in which the average temperature is 70 degrees or higher. The lowest average high is in January at 60.3 degrees.

The population in Savannah is roughly 130,000 and Chatham County is the fifth most populous county in the state of Georgia.

Savannah also sits centrally located to some of the Southeast's finest beaches. Tybee Island, located less than 30 minutes from Armstrong Atlantic State's campus, offers six miles of unspoiled sands, tempting seafood and gracious accommodations. Resort areas such as Hilton Head, South Carolina, are less than one hour away and provide even more relaxing getaway options.

Whether it's the lure of historic settings, the friendliness of a Southern community or the beautiful climate of southeast Georgia, Savannah is the place for you.

The AASU Athletic Department Wishes To Thank The Following For Their Support Of Pirate Athletics !



Better Ingredients.
Better Pizza.



2006 AASU Pirates Women's Soccer Schedule



Date	Day	Opponent	Time
Aug. 17	Thurs.	at Mercer (Exhibition)	7:00 p.m.
Aug. 19	Sat.	at Embry-Riddle (Exhibition)	7:00 p.m.
Aug. 25	Fri.	at Tampa	7:00 p.m.
Aug. 27	Sun.	vs. Florida Southern (Tampa, Fla.)	Noon
Sept. 1	Fri.	PRESBYTERIAN	5:00 p.m.
Sept. 4	Mon.	at Erskine	7:00 p.m.
Sept. 9	Sat.	at Lander *	4:00 p.m.
Sept. 12	Tues.	at Catawba	5:00 p.m.
Sept. 16	Sat.	NORH GEORGIA *	4:00 p.m.
Sept. 20	Wed.	COLUMBUS STATE *	4:00 p.m.
Sept. 24	Sun.	CLAYTON STATE *	2:00 p.m.
Sept. 26	Tues.	SAVANNAH COLLEGE of ART & DESIGN	5:00 p.m.
Sept. 30	Sat.	at USC Aiken *	5:30 p.m.
Oct. 3	Tues.	USC UPSTATE	4:00 p.m.
Oct. 7	Sat.	at Newberry	2:00 p.m.
Oct. 9	Mon.	at Tusculum	4:00 p.m.
Oct. 13	Fri.	ANDERSON	4:00 p.m.
Oct. 14	Sat.	GEORGIA SOUTHWESTERN STATE *	3:00 p.m.
Oct. 18	Wed.	at UNC Pembroke *	7:00 p.m.
Oct. 20	Fri.	GC&SU *	4:00 p.m.
Oct. 22	Sun.	BELMONT ABBEY	2:00 p.m.
Oct. 24	Tues.	PBC Championships First Round	TBA
Oct. 27-28	Fri.-Sat.	PBC Championships Final Four	TBA

* Denotes Peach Belt Conference Opponent

