

Reflector

1936

Georgia Southern University

Follow this and additional works at: <https://digitalcommons.georgiasouthern.edu/reflector-yearbook>



Part of the [Higher Education Commons](#)

Recommended Citation

Georgia Southern University, "Reflector" (1936). *Reflector Yearbook*. 9.
<https://digitalcommons.georgiasouthern.edu/reflector-yearbook/9>

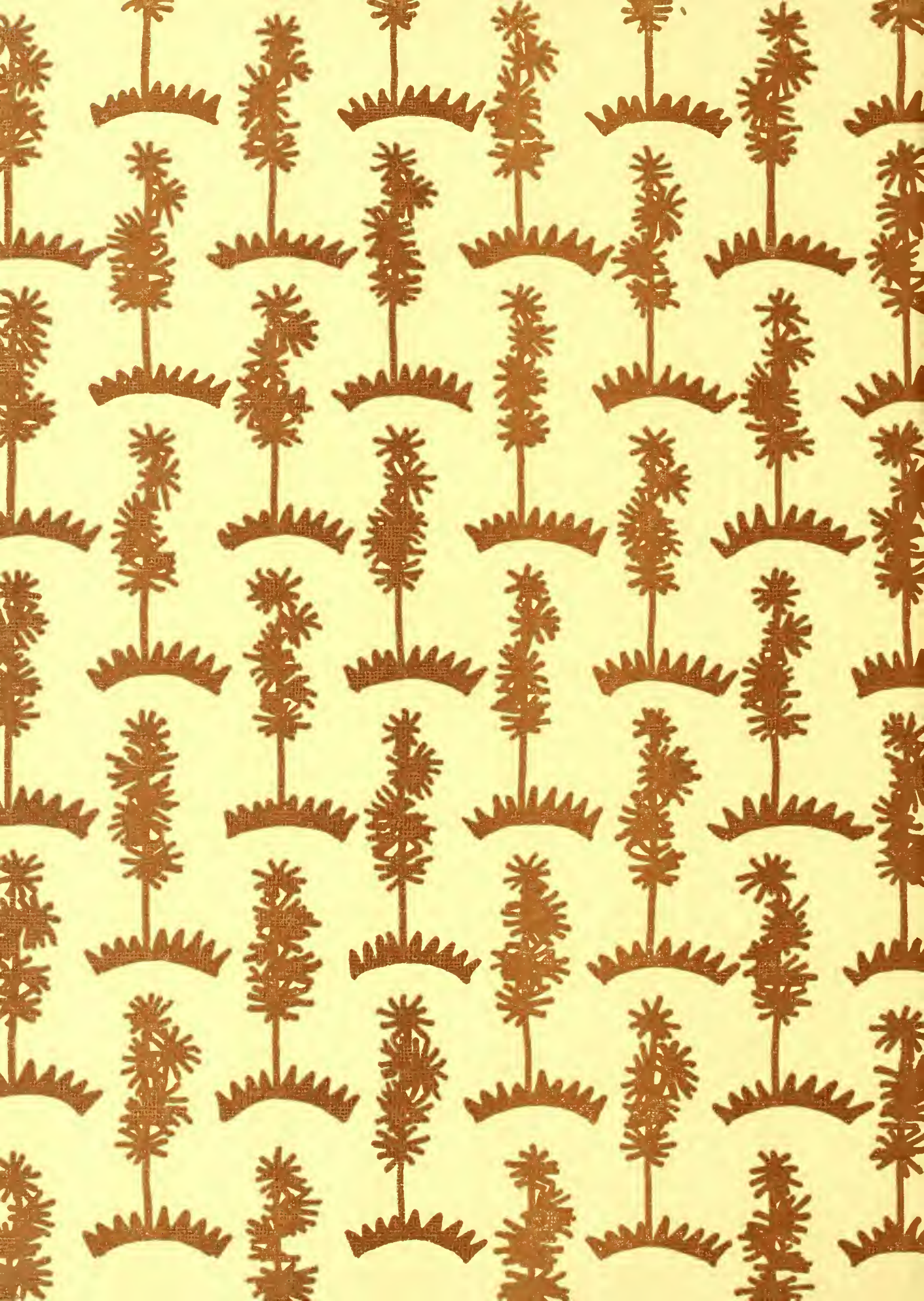
This book is brought to you for free and open access by the Student Media at Digital Commons@Georgia Southern. It has been accepted for inclusion in Reflector Yearbook by an authorized administrator of Digital Commons@Georgia Southern. For more information, please contact digitalcommons@georgiasouthern.edu.



REFLECTOR

1936





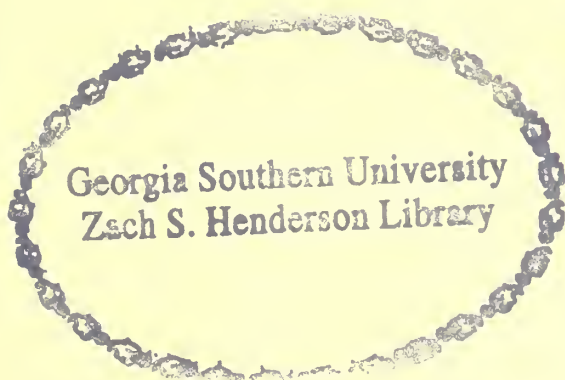
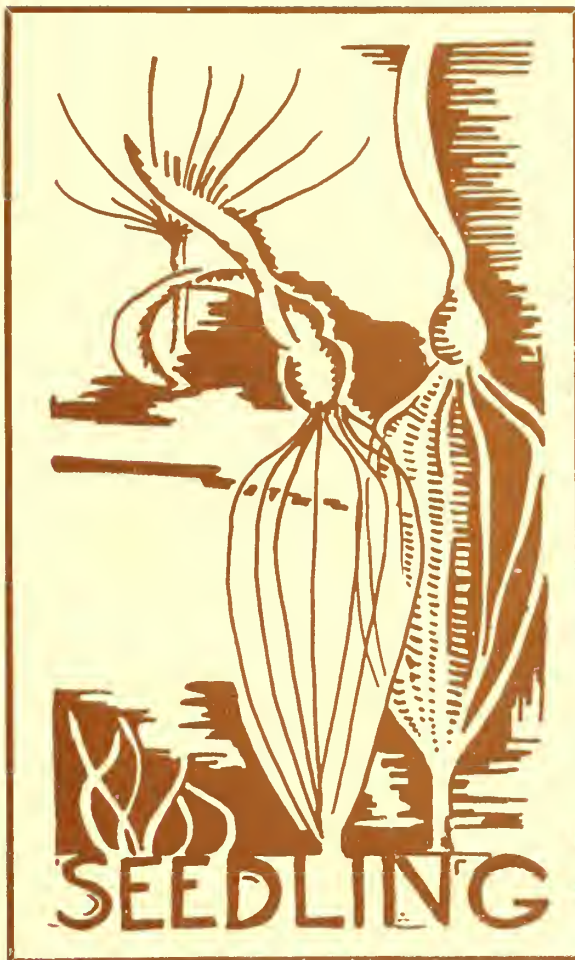




Digitized by the Internet Archive
in 2014

<https://archive.org/details/reflector1936na>

PLACEMENT SERVICE
Georgia Teachers College
Collegeboro, Georgia



EX LIBRIS

REFLECTOR
1936

MARVIN McKNEELY
Editor



The REFLECTOR

1936

Published by the
SENIOR CLASS OF THE SOUTH GEORGIA TEACHERS
COLLEGE

Collegeboro, Georgia



THEME EXPLANATION AND DEDICATION



Dr. Charles Herty, whose turpentine cups have revolutionized the Naval Stores industry has again advanced the industries of Georgia by his development of newspaper from Georgia pines. It is only fitting that since

his turpentine cups were introduced on our campus that we choose as a theme for our annual "The pine in Georgia industry." It is to the pines that make our future bright, to a dream realized, and to the dreamer that our yearbook is dedicated.



CONTENTS

I. THE COLLEGE

Faculty

II. CLASSES

Seniors

Juniors

Sophomores

Freshmen

III. ACTIVITIES

Organizations

Social Clubs

IV. ATHLETICS

V. FEATURES

VI. ADVERTISEMENTS



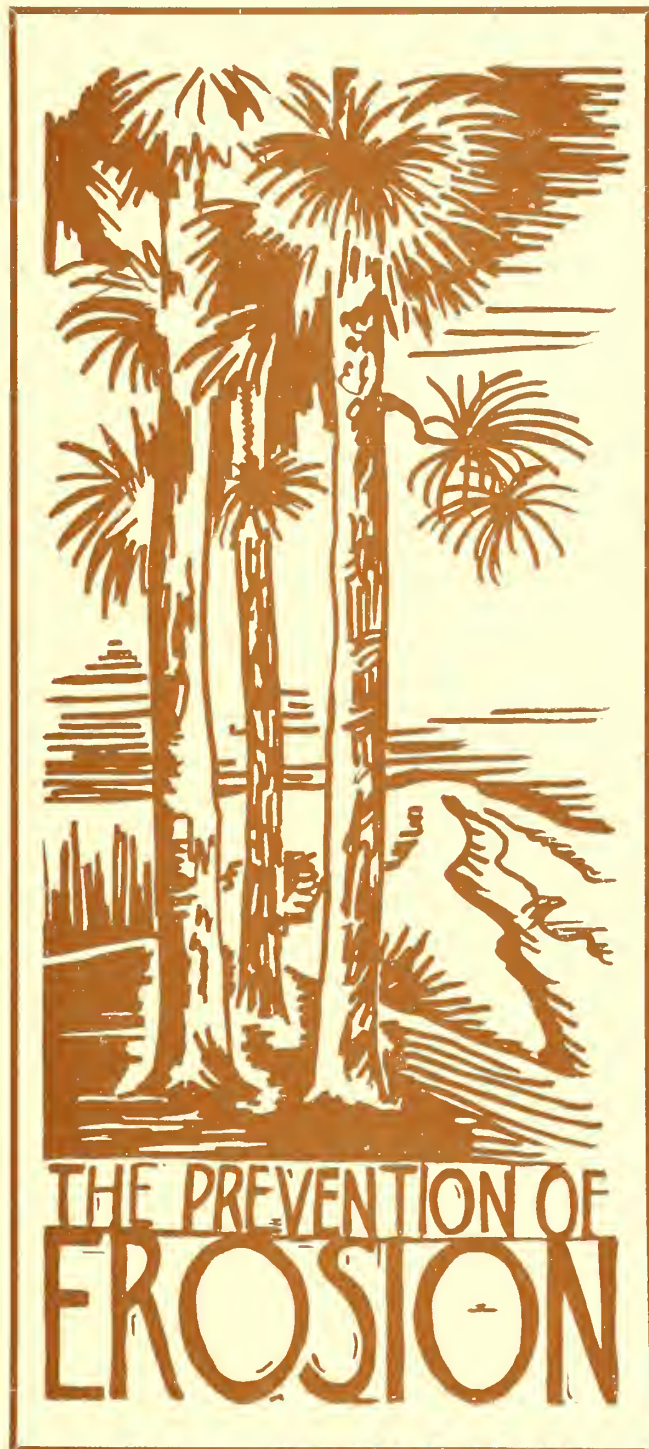
ALMA MATER

Down among the murmuring pine trees
Where old Nature smiles,
Old T. C. holds up a standard
Known for miles and miles.

CHORUS

Lift the chorus. Speed it onward,
Ne'er her standard fail.
Hail to thee, our Alma Mater,
Hail T. C., All Hail.

From the blue and broad Atlantic
Balmy breezes blow,
Wafting for old T. C.'s spirit,
May she ever grow.



C O L L E G E

“Of yon monarchal pine, thou didst absorb
The elemental virtues of all airs,
Timid or bold.”

Hayne



East Hall



Administration Building



Healthy Pines



West Hall



Administration Building By Night



Side View Anderson Hall



Mulberry Tree at Sunset



F A C U L T Y



MARVIN SUMMERS PITTMAN, A.B., M.A., Ph.D.
President

A MESSAGE FROM THE PRESIDENT

College days form a jeweled link in the chain of events which constitute life's totality. Each day is a jewel with many facets—each cut with original angles and reflecting its own lines.

College days are at once the fruition of the dreams of youth and the prophecy of what maturity will contain. In the brief span of four years are packed the harvest of all yesterday and the seed for all the harvests of all tomorrows.

This Senior Class has received more from society than has any of its predecessors. From it more is expected. That it will not disappoint us is evidenced by the practical ends to which it is turning its idealisms. This class glorifies the Georgia pine tree—Georgia's wealth of yesterday, one of her most valuable resources of today, and her most dependable financial hope for tomorrow. Whether we as a State shall advance to greater material wealth, a more efficient social order, and higher ideals of living, or sink to poverty in material, methods, and morals will depend upon the degree to which our college students learn the lessons of our yesterdays and capitalize them aright in the activities which the tomorrow will thrust upon us. It is my hope that this REFLECTOR may accurately reflect the past and with equal accuracy predict the future.



DEAN ZACH S. HENDERSON, A.B., M.A.
Dean of Faculty

JOSEPH E. CARRUTH
A.B., M.A., Ph.D.
Dean of Senior College

VIOLA PERRY
B.S., M.A.
Registrar

CHESTER MCARTHUR DESTLER
A.B., M.A., Ph.D.
Dean of Junior College

To the Students of 1935-36:

Since the editor of the REFLECTOR asked me to write a message for the 1936 annual, I have taken the time to review all of the annuals published since 1927. To look at the scenes of the campus in the years past and compare them with the situation today makes one conscious of the progress which is being made by our institution. The students who have been here have had a part in building what is known as the "T. C. Spirit." Many who are at work have carried this spirit to other communities. The spirit of T. C. is being carried to all parts of the State by our students.

Reviewing these annuals as I did gave me much pleasure because it brought memories of happy experiences. The future of our college and our REFLECTOR depends much on you as students. Surely in years to come you will receive much joy from your annual.

DEAN HENDERSON.

REFLECTOR

1936

FACULTY



MARY SMALL A.B., M.A.
Art

MAE MICHAEL Commercial
Secretary to President

LOTTIE MILDRED PIERCE A.B., M.A.
Commercial Subjects

JOSEPH E. CARRUTH A.B., M.A., Ph.D.
Head of Education Department

ALVIN A. SINGLEY A.B., M.A.
Education

WALTER L. DOWNS A.B., M.A.
Director of the Training School

NELL BRACEY A.B., M.A.
Critic Teacher

MARION GROOVER A.B.
Critic Teacher

IRIS ROBERTS B.S.
Critic Teacher

MARIE WOODS B.S., M.A.
Critic Teacher

ELIZABETH DONOVAN B.S., M.A.
G. E. B. Supervisor

JANE FRANSETH A.B.
G. E. B. Supervisor

THOMAS B. STROUP A.B., M.A., Ph.D.
Head of English Department

ROBERT F. DONALDSON A.B., M.A.
English

FIELDING D. RUSSELL A.B., M.A.
English

SOPHIE JOHNSON B.S.
Dean of Men and English

RUTH BOLTON B.S., M.A.
Home Economics

CHARLES W. SMITH A.B., M.A., Ph.D.
Romance Languages

HOYT H. LONDON B.S., M.A., Ph.D.
Industrial Arts

ELEANOR RAY A.B., B.L.S.
Librarian

ZULIEME LANE B.S., M.A.
Assistant Librarian

ZACH S. HENDERSON B.S., M.A.
Dean of Faculty and Mathematics

VIOLA PERRY B.S., M.A.
Registrar and Mathematics

MRS. ESTHER WILBURN BARNES B.S.
Music

WILLIAM DEAL A.B.
Director of Band and Orchestra

BYRON L. SMITH B.S., M.A.
Coach and Physical Education

MRS. GENERIA HONEYCUTT BOWEN B.S.
Physical Education

CARO LANE A.B., M.A.
Physical Education and Health



FACULTY



JAMES WRINKLE B.S.
Physical Education

WILLIAM S. HANNER A.B., M.A.
Chemistry and Physics



BLONDEL H. CARLTON A.B., M.A., Ph.D.
Physical Science

MALVINA TRUSSELL B.S., M.S.
Biology



CHESTER MCARTHUR DESTLER . A.B., M.A., Ph.D.
Head of Social Science Department

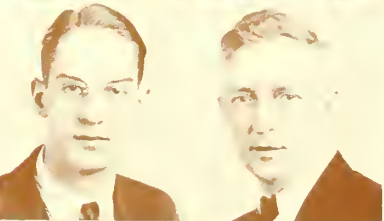
HESTER NEWTON B.S., A.B., M.A.
History and Social Science

R. J. H. DELOACH B.S., M.A.
Sociology and Economics



MAMIE VEAZEY A.B.
Dean of Women and Geography

JAY B. WESTCOTT A.B., M.A.
Social Science



ROBERT L. WINBURN Commercial
Bookkeeper

LILLIAN CUMBEE R.N.
Nurse



MRS. P. D. LANDRUM Dietitian
Director of Dining Hall



C L A S S E S

“High then, as those noble pines,
Let soar our soul on wings of light.”

Anon.



SENIOR CLASS

WILLIAM STEWART	President
MARVIN McKNEELY	Vice-President
MATTIE CAIN	Secretary
CLEO TRAPNELL	Treasurer
GWYN DEKLE	Student Council Representative
J. D. PURVIS	Student Council Representative
ELOISE GRAHAM	Student Council Representative

REFLECTOR

1936



BILL STEWART

Dixie, Georgia

History

Bachelors Club, 1, 2, 3, 4; Vice-President Bachelors Club, 3; Representative Student Council, 1; Class President, 3, 4; Secretary Y. M. C. A., 2, Cabinet, 3; Deputation Team, 2; Vice-President Oglethorpe Literary Society, 1; President Oglethorpe Literary Society, 2; Vice-President Math Club, 2; Popular Science Club, 1, 2, 3, 4; International Relations Club; Dramatic Club, 1, 2, 3, 4; Varsity Basketball, 1, 2, 3, 4.



MARVIN MCKNEELY

Griffin, Georgia

English

Delta Sigma; Editor REFLECTOR, 3; Columnist *George-Anne*, 1; Literary Editor *George-Anne*, 2; Managing Editor *George-Anne*, 3; President French Club, 1; Freshman Commission, 1; President Oglethorpe Literary Society, 2, Society Debater, 2; President Science Club, 2; Treasurer Dramatic Club, 1, President, 2; Bachelors Club, 2, 3; Vice-President Bachelors Club, 3; Vice-President Senior Class, 3; Y. M. C. A.; International Relations Club, 2, 3.

MATTHE CAIN

Millhaven, Georgia

English

Dux Domina; REFLECTOR Staff, 4; Y. W. C. A., 1, 2, 3, 4; W. A. A. Council, 4; House Council, 3, 4, Secretary, 4; Secretary Dux Domina, 4; Secretary Senior Class, 4; Treasurer Stephens Literary Society, 4; Home Economics Club, 1, 2, 3, 4; Science Club, 2, 3, 4; Basketball Team, 2.



CLEO TRAPNELL

Metter, Georgia

Home Economics

Y. W. C. A., 1, 2, 3, Cabinet, 3; Oglethorpe Literary Society, 1, 2, 3; Secretary Language Club, 1, 2, 3, Vice-President, 2; Popular Science Club, 1, 2, 3; Home Economics Club, 1, 2, 3, President, 3; International Relations Club, 2, 3; REFLECTOR Staff, 3; May Queen's Court, 2.



J. D. PURVIS
Willacoochee, Georgia

History

Bachelors Club, 1, 2, 3, 4; Class President, 1; Stephens Literary Society, Vice-President, Chaplain, 1, 2; Treasurer Dramatic Club, 1, President, 2; Student Council Representative, 1, 4; Student Government Body, 3; Vice-President Science Club, 2; Vice-President Y. M. C. A., 2, President, 3; Blue Ridge Delegate, 3; State "Y" Secretary, 3; International Relations Club, 3, 4; "T" Club, 3; Honors Day Student, 3; Basketball, 1, 2, 3, 4; *George-Anne* Reporter and Business Manager, 2, Managing Editor, 3, Editor, 4.



GWYN DEKLE
Claxton, Georgia

English

G. S. C. W., 1; Tennis Champion, 2; Who's Who, 2; W. A. A. Council, 3; International Relations Club, 3; President W. A. A., 4; Chairman International Relations Council, 4; Business Manager *George-Anne*, 4; Student Council, 4; REFLECTOR Staff, 4.



ELOISE GRAHAM
Savannah, Georgia

English

Epicurean; Oglethorpe Literary Society, 1, 2, 3, 4, Debater, 1, Reader, 1; Popular Science Club, 1, 2, 3, 4; Dramatic Club, 1, 2, 3, 4; President Dramatic Club, 4; Secretary-Treasurer Epicureans; Vice-President Oglethorpe Literary Society, 2; Student Council, 4; W. A. A. Council, 2, 3, 4; Basketball, 1, 2, 3, 4; May Queen's Court, 3; *George-Anne* Staff, 3, 4.



RUTH BARNETTE
Alpharetta, Georgia
Home Economics

Transferred from University of Georgia, 3; Y. W. C. A., 3, 4; Oglethorpe Literary Society, 4.



REFLECTOR

1936



JOHN BLOUNT

Macon, Georgia

History

Transferred from Andover Newton, Boston; President Stephens Literary Society, 4; International Relations Club, 4; Debater for Stephens Literary Society, 4.



CECILE BRANNEN

Statesboro, Georgia

Social Science

Transferred from University of Georgia; Day Student; Y. W. C. A.; May Queen's Court.

JOHN BRIDGES

Unadilla, Georgia

Science

Y. M. C. A.; Y. M. C. A. Cabinet, 3, 4, Monitor, 3; Math Club; Science Club; Dramatic Club; Stephens Literary Society.



J. D. CHERRY

Bainbridge, Georgia

History

President Student Council, 3, 4; Football, 1, 2, 3, 4; Science Club Award, 2; Popular Science Club, 1, 2, 3, 4; Honor Student, 3.



MRS. LAURIE V. CLARK

Savannah, Georgia

English

Y. W. C. A.; Summer School Student.



HARRY DELOACH

Claxton, Georgia

Social Science

Berry College, 1; Y. M. C. A.; Stephens Literary Society; International Relations Club, 4; Campus Electrician; Assistant Supervisor.



GEORGE DONALDSON

Claxton, Georgia

History

G. S. C. M., 1; Student Council, 3; *George-Anne* Staff, 3, 4; Basketball, 2, 3, 4; Track, 3; House Council, 3.



MARGARET DUNCAN

Millhaven, Georgia

English

Transferred from Wesleyan, 2; Y. W. C. A.; Stephens Literary Society, 1, 2, 3, 4; Basketball Team, 1, 2; Soccer Team, 1, 2; Popular Science Club, 1, 2, 3, 4.



REFLECTOR

1936



DOUGLAS DURDIN

Columbus, Georgia

English, History

Winner of James Allen Bunce Award, 3; Orchestra, 1, 2, 3, 4; Band, 3, 4; Y. M. C. A., 1, 2, 3, 4; Stephens Literary Society, 1, 2, 3, 4; Math Club, 1, 2, 3.



JANIE DURRENCE

Claxton, Georgia

English

Y. W. C. A., 1, 2, 3, 4; Stephens Literary Society, 1, 2, 3, 4; W. A. A.; W. A. A. Council, 4; International Relations Club.

ROBERT ESPY, JR.

Montezuma, Georgia

History

Delta Sigma; Bachelors Club, President; Stephens Literary Society; Science Club; Secretary Y. M. C. A.; Band; Orchestra; President West Hall; International Relations Club; Business Manager REFLECTOR; Debating Club, 4; Transfer Young Harris.



MAYO CODY GILLIAM

Savannah, Georgia

Mathematics

D. L. D.; Math Club, 1, 2, 3; Secretary Math Club, 2; Vice-President Math Club, 3; Science Club, 1, 2, 3; Glee Club, 1, 2, 3; Oglethorpe Literary Society, 1, 2, 3; Secretary Oglethorpe Literary Society, 2; Vice-President Oglethorpe Literary Society, 3; Dramatic Club, 3; *George-Inne* Staff, Society Editor, 1, 2, Associate Editor, 3, Editorial Staff, 4; Y. W. C. A., 1, 2, 3, 4; REFLECTOR Staff, 4.



HELEN GODBEE
Newington, Georgia
English

House Council Representative, 1, 2; Oglethorpe Literary Society, 1, 2, 3, 4; Pianist, 2, 3; Glee Club, 1, 2, 3, 4; Y. W. C. A. Cabinet, 3, 4; Music Certificate, 2.



IDA MAE HAGIN
Statesboro, Georgia
History

Y. W. C. A., 1, 2, 3, 4; Popular Science Club; Oglethorpe Literary Society; Honor Student in Scholarship, 3; Y. W. C. A. Cabinet, 3; International Relations Club, 3, 4; Treasurer International Relations Club.



JAMIE HOOKS
DeSoto, Georgia
English

Transferred from Piedmont College; Dramatic Club; Creative Writing Club; Y. W. C. A.; Stephens Literary Society.



TRAVIS KIRKLAND
Douglas, Georgia
Science

Transferred from S. G. S. C.; Popular Science Club, 3, 4; Math Club, 3, 4; International Relations Club, 3, 4; Oglethorpe Literary Society, 3, 4.





CAROLYN LEWIS

Broxton, Georgia

English

G. S. W. C., 1; Y. W. C. A., 1, 2, 3, 4; Oglethorpe Literary Society, 2, 3, 4; House Council, 4; REFLECTOR Staff.



HEARN LUMPKIN

Sylvester, Georgia

Social Science

Transferred from Emory; President Stephens Literary Society, 4; Vice-President, 3; Stephens Literary Society Debater, 3, 4; Associate Editor of REFLECTOR, 4; Intercollegiate Debater, 3, 4; Y. M. C. A. Cabinet, 4; International Relations Club, 4; "Y" Delegate to Wesleyan and Emory State Cabinet Conferences.

HOWELL C. MARTIN

Patterson, Georgia

History

Bachelors Club; Oglethorpe Literary Society, 1, 2, 3, 4; Treasurer, 2; Dramatic Club, 1, 2, 3, 4; Treasurer, 2; Glee Club, 1; Debater, 1, 2; Deputation Team, 2; Y. M. C. A., 3, 4; Chairman of Vespers, 4; Campus Committee, 4; "T" Club, 2, 3, 4; Football, 2; Basketball, 1; Baseball, 1, 2, 3, 4.



HENRIETTA MOORE

Statesboro, Georgia

Social Science

Day Student; Y. W. C. A.; Oglethorpe Literary Society.



JOSEPHINE MUNSON

Sanford, Florida

Home Economics

I. O. U.; Home Economics Club, 1, 2, 3, 4; Y. W. C. A., 1, 2, 3, 4; Oglethorpe Literary Society, 1, 2, 3, 4; President I. O. U.; International Relations Club, 4; Monitor in East Hall, 4.



JAMES WENDELL MOORE

Lyons, Georgia

Science

Bachelors Club; REFLECTOR Staff, 4; Honors Day Student, 3.



CHARLES PARKER, JR.

Baxley, Georgia

History

Mercer University, 1, 2; Kappa Alpha; Summer School, 2, 3; Glee Club Quartette.



HENRY PARRISH

Valdosta, Georgia

Social Science

Transferred from Emory; Junior Glee Club; Orchestra; Band; String Ensemble; Stephens Literary Society.



TULLY S. PENNINGTON
Oglethorpe, Georgia
Science
G. S. C. M., 1, 2, 3; Y. M. C. A.



E. D. RAULERSON
Blackshear, Georgia
Science
Vice-President Y. M. C. A., 4; Council Member,
3; Dramatic Club, 1, 2, 3, 4; Science Club, 3, 4.

WYNNIS ROBERTS
Blakely, Georgia
English

I. O. U.; Transferred from Berry; Home Economics Club; Y. W. C. A.; Oglethorpe Literary Society.



LOUISE ROZIER
Stilson, Georgia
Home Economics

L. T. C.; President of Carruth Hall, 4; Vice-President Language Club, 4; W. A. A. Council, 2, 3, 4; Y. W. C. A. Cabinet, 3, 4; Home Economics Club, 2, 3, 4; Treasurer, 4; Stephens Literary Society, 2, 3, 4; Social Science Club, 2, 3; Basketball, 1, 2, 3, 4; REFLECTOR Staff, 4; Director of Girls' Athletics, Laboratory School, 4; General Assembly of Student Council.



ALTON SETTLE
Rocky Mount, North Carolina

History

Iota Pi Nu; Treasurer Iota Pi Nu, 4; President Bachelors Club, 4; Secretary Bachelors Club, 3; Treasurer Sophomore Class, 2; REFLECTOR Staff, 4; Baseball, 2, 3; Tennis, 2, 3, 4.



TYRA SATURDAY

Collins, Georgia

English

Stephens Literary Society, 1, 2, 3, 4; E. E. E. Club, 2; Glee Club, 1, 2; Y. W. C. A., 1, 2, 3, 4.



BLAKELY THORNTON

Pembroke, Georgia

Mathematics

Delta Sigma; Bachelors Club; Track Team, 3; Math Club; "T" Club; Popular Science Club; REFLECTOR Staff; Stephens Literary Society.



JOHN DEWEY WIGGINS

Uvalda, Georgia

History

Iota Pi Nu; Transfer; Orchestra; Band, 4; Glee Club, 4; Oglethorpe Literary Society Debater.

REFLECTOR

1936



ELWYN WILSON

Duluth, Georgia

History

Oglethorpe University, 1;
George-Ann Staff, 3, 4; Vice-
President Y. W. C. A., 4;
Treasurer Y. W. C. A., 3;
House Council, 3; REFLECTOR
Staff, 4.

HARRY ZALUMAS

Thomasville, Georgia

History

Young Harris, 1, 2; Oglethorpe
Literary Society, 3, 4; Chaplain,
3; Y. M. C. A., 3, 4; Debating
Club, 3, 4; Tri-State Club, 3;
International Relations Club,
3, 4.

EDNA HODGES

Claxton, Georgia

English

Y. W. C. A.; Popular Science
Club; Stephens Literary So-
ciety; Summer School Student.

MRS. JILLIE M. DOWNING

Isle of Hope, Georgia

English

Summer School Student;
Transfer; Y. W. C. A.

QUEEN ELIZABETH COLLINS

Cobbtown, Georgia

Business Certificate

B.S. in Education; Special Business Student.



FRANCES SANCHEZ

Pre-Medical

B.S. Degree, G. S. C. W.; Pre-Medical Student.



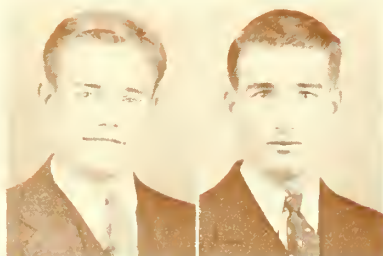


JUNIOR CLASS

EUGENE BELL	President
WILLIAM GARRISON	Vice-President
LILLIAN SIMMONS	Secretary and Treasurer
KATHRYN SIMMONS	Student Council Representative
LOUIS BECTON	Student Council Representative

REFLECTOR

1936



EUGENE BELL, *President* . Savannah, Ga.
Delta Sigma

WILLIAM GARRISON, *V.-Pres.*, Savannah, Ga.
Delta Sigma

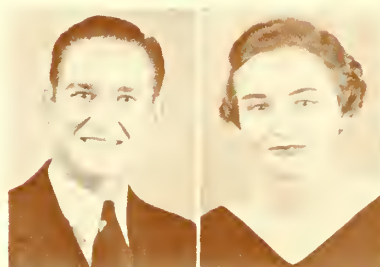


LILLIAN SIMMONS, *Sec.-Treas.*, Metter, Ga.
L. T. G.

KATHRYN SIMMONS . . . Metter, Ga.
Student Council Representative
L. T. G.

LEWIS BECTON . . . Bloomingdale, Ga.
Student Council Representative
Delta Sigma

SUDIE LEE AKINS . . . Statesboro, Ga.



ERNEST ANDERSON . . . Matthews, Ga.

JAMES E. BEASLEY . . . Statesboro, Ga.

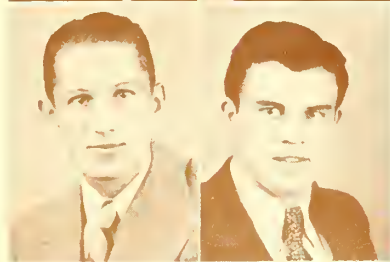


CAROLYN BLITCH Statesboro, Ga.

RICHARD BOATRIGHT Tennille, Ga.

A. J. BOWEN Portal, Ga.

PEYTON BURKHALTER Glennville, Ga.



JOE H. BUNTON Waynesboro, Ga.

CHRISTINE CARRUTHERS Statesboro, Ga.

GEORGE CARTER Cusseta, Ga.
Iota Pi Nu

ROGER CARTER Powersville, Ga.

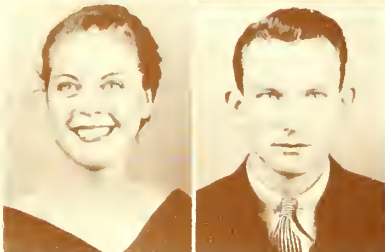
REFLECTOR

1936



JULIETTE COALSON Oliver, Ga.

GRACE CROMLEY Brooklet, Ga.
L. T. C.



ELIZABETH DEAL Statesboro, Ga.

JAMES DEAL Statesboro, Ga.
Delta Sigma

JAMES D. DICKERSON Hepzibah, Ga.

DURWARD FULFORD Summit, Ga.
Delta Sigma

JULIAN DYESS Claxton, Ga.

LILLIAN EASON Reidsville, Ga.



WAYNE McKNEELY Griffin, Ga.
Delta Sigma

GRACE McNORRIS Waynesboro, Ga.

MRS. ELIZABETH MILLER Statesboro, Ga.

KATHRYN OUTEN Douglas, Ga.



ROBERT POUND Swainsboro, Ga.
Iota Pi Nu

ROY RABUN Warrenton, Ga.
Iota Pi Nu

SARA REMINGTON Statesboro, Ga.
L. T. G.

EARL RIGGS Statesboro, Ga.
Delta Sigma

REFLECTOR

1936



IRENE ENECKS Rocky Ford, Ga.
L. T. C.

ELIZABETH GIVINS . . . Bloomingdale, Ga.



JOHN HENSLEE Cobbtown, Ga.

SAMMIE HOGAN Dexter, Ga.

DESSIE HOLTON Homerville, Ga.
L. O. U.

SHIELDS KENAN Statesboro, Ga.

HELEN MCGARRAH Weston, Ga.
L. T. C.

VERNA LASSETER Atlanta, Ga.
L. T. C.



MARJORIE RIVERS Avera, Ga.

MARY ROGERS Reidsville, Ga.

LOTTIE ROUNTREE Reidsville, Ga.
Dux Domina

THOMAS SHEAROUSE Guyton, Ga.



MARY SIMMONS Statesboro, Ga.

MILDRED SMITH Manassas, Ga.

DORIS STEPHENSON Vidalia, Ga.

FOREST TOWNSEND Toombsboro, Ga.
Iota Pi Nu

REFLECTOR

1936



JAMES TOWNSEND . . . Toombsboro, Ga.
Iota Pi Nu

MARY TOWNSEND . . . Toombsboro, Ga.



CAROLYN WARNELL . . . Pembroke, Ga.
D. L. D.

ELIZABETH WATKINS . . . Edison, Ga.

MARK WILSON . . . Statesboro, Ga.



MARTHA WOOD . . . Macon, Ga.





SOPHOMORE CLASS

HOLDER WATSON President
 BARTON STEPHENS Vice-President
 MILDRED BRANNEN Secretary and Treasurer
 JOE E. LAMBRIGHT Student Council Representative

REFLECTOR

1936



HOLDER WATSON, *President* . . . Louisville, Ga.
Delta Sigma

BARTON STEPHENS, *Vice-Pres.* . . Wrens, Ga.
Iota Pi Nu

MILDRED BRANNEN, *Sec.-Treas.* . . Jesup, Ga.
Epicurean

JOE E. LAMBRIGHT . . . Brunswick, Ga.
Student Council Representative
Delta Sigma

DERETA AKINS . . . Brooklet, Ga.

EMORY ALLEN . . . Statesboro, Ga.
Delta Sigma

DOROTHY AYER . . . Wrens, Ga.

OPAL BACON . . . Glennville, Ga.

VERNICE BACON . . . Manassas, Ga.

A. A. BAIRD . . . Augusta, Ga.
Delta Sigma

JOHN BARGERON . . . Millhaven, Ga.
Bachelor

SARA BARROW . . . Matthews, Ga.

ALINE BEASLEY . . . Statesboro, Ga.

ETHEL BETHEA . . . Blakely, Ga.

NORMA BISHOP . . . Summertown, Ga.
THERESA BLOCKER . . . Glennville, Ga.

KNAPP BODIFORD . . . Sylvania, Ga.
THELMA BOYD . . . Stillmore, Ga.
MAUDE BRANNEN . . . Statesboro, Ga.
JUANITA BRINSON . . . Brooklet, Ga.

EVELYN BURCH . . . Jacksonville, Ga.
D. L. D.

LAURENCE BURKE . . . Millen, Ga.
MARY J. BUNTON . . . Girard, Ga.
ETHEL MAE BYRD . . . Bainbridge, Ga.
D. L. D.

WILLARD CARTEE . . . Metter, Ga.
MOLLIE LOU CASON . . . Tifton, Ga.
RUTH CLARK . . . Statesboro, Ga.
ANNA CODY . . . Savannah, Ga.
D. L. D.



REFLECTOR

1936

CARL COLLINS *Tota Prima* Statesboro, Ga.

MERCER COLLINS *Bachelor* Cobbtown, Ga.

VERA COOKE *L. O. U.* Milan, Ga.

FRANCES CONE *Episcopian* Savannah, Ga.

JAMES COWART Garfield, Ga.

MARY CROMLEY *L. T. C.* Brooklet, Ga.

WALTON CROUCH Dawson, Ga.

EUNICE DAVIS Ludowici, Ga.

MAURICE DEAN Garfield, Ga.

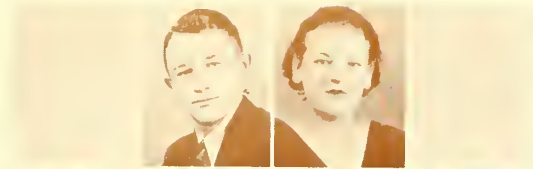
GUYTON DELOACH Claxton, Ga.

MARGARET DELOACH Portal, Ga.

HESTER DIXON Gibson, Ga.

EVELYN DURRENCE Claxton, Ga.

SPURGEON EDWARDS Springfield, Ga.



TOM EDWARDS Claxton, Ga.

Bachelor

LORELLA ELTON Lumber City, Ga.

KENNETH ENGLAND Wadley, Ga.

ELISE FETZER Marlow, Ga.

HARLAND FETZER Marlow, Ga.

WILL HILL FIELDS Montezuma, Ga.

Bachelor

AMANDA FLANDERS Adrian, Ga.

BERTHA NELL FLANDERS Adrian, Ga.

ELAINE FOSTER Patterson, Ga.

L. O. U.

FAY FOY Statesboro, Ga.

dux Domina

CARRIE FREEMAN Sylvania, Ga.

DOROTHY E. FREEMAN Sylvania, Ga.

J. B. GILLIAM Savannah, Ga.

J. C. GOLDEN Collins, Ga.

REFLECTOR

1936



R. P. GOOLSBY Naylor, Ga.
BARBARA GRAY Waynesboro, Ga.

Epicurean

ALBERT GREEN Statesboro, Ga.
Delta Sigma

DOROTHY HALL Nicholls, Ga.

RUTH HARDEN Appling, Ga.
Dux Domina

ANNE HARDY Register, Ga.

BOB HARRIS Vidalia, Ga.

MELBA HARVEY Glennville, Ga.
Dux Domina

VELMA HAYES Waycross, Ga.

WALTER HENDERSON Glennville, Ga.

EDNA HERRIN Rutledge, Ga.

LAURA HICKEY Cusseta, Ga.
Epicurean

ALICE HILL Bainbridge, Ga.
Dux Domina

GRAYSON HILL Hilltonia, Ga.

J. C. HINES Hinesville, Ga.
HUGH HODGES Guyton, Ga.
Iota Pi Nu

A. J. HOGAN Dexter, Ga.
JOHN C. HOLLINGSWORTH Sylvania, Ga.
LOUISE HOLLINGSWORTH Collins, Ga.
L. O. U.
CLARA MAE JENKINS Portal, Ga.

MARTHA JOHNSON Portal, Ga.
BETTY JOSEY Anderson, S. C.
L. T. C.

SAM JOSSEY Adel, Ga.
NONA KENNEDY Manassas, Ga.

VERSIE KENNEDY Manassas, Ga.
WILLIAM KENNEDY Statesboro, Ga.
Iota Pi Nu

IDA KENT Millen, Ga.
Epicurean

MYRTIS KIEFFER Springfield, Ga.



REFLECTOR

1936

GEORGE KINZY Cedartown, Ga.
 IMOGENE MARTIN Cusseta, Ga.
 CATHERINE MCCORKLE Thomson, Ga.
D. L. D.

A. B. MCLEAN Millen, Ga.

BOBBIE McLEMORE Statesboro, Ga.
Iota Pi Nu

EVELYN McLEOD Iron City, Ga.
 LEAH DORA McWATERS Adrian, Ga.
Dux Domina

JULIA MILLER Maysville, Ga.

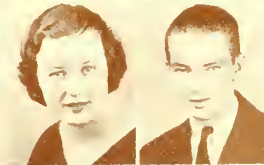
EVA MINCHEW Waycross, Ga.
 DERRICK MINCEY Clanton, Ga.
Iota Pi Nu

EVELYN MINICK Brooklet, Ga.
L. T. C.

ARDELIA MOBLEY Millen, Ga.

GERTRUDE MOBLEY Sardis, Ga.
D. L. D.

EUGENE MOCK Pembroke, Ga.



ELIZABETH MOODY Daisy, Ga.
Dux Domina

NINA MOORE Statesboro, Ga.

TESSIE LENA MOORE Valdosta, Ga.
 HARVIN D. MULKEY Pompano, Fla.
 MILDRED MURROW Rocky Ford, Ga.
 MYRTLE OLIVENT Recovery, Ga.

HEMANS OLIVER Savannah, Ga.
 MILDRED OLLIFF Register, Ga.
 KIRKLEY PAINE Waycross, Ga.
 LEE POWELL Fairfax, Ga.

EDGAR PRICE Lyons, Ga.
 CHRISTINE RAHN Rocky Ford, Ga.
 GLENN RHODES Stapleton, Ga.

Iota Pi Nu
 PAUL ROBERTSON Brooklet, Ga.
Iota Pi Nu

REFLECTOR

1936



ROBERT ROGERS Adrian, Ga.
 LEROY ROUGHTER Sandersville, Ga.
Bachelor
 RUBY ROZIER Stilson, Ga.
 ALVIS RUSHTON Rocky Ford, Ga.



JACK RYALS McRae, Ga.
 CHARLES SHEPARD Belleville, Ga.
 SIMON E. SANCHEZ Barwick, Ga.
 ISOBEL SORRIER Statesboro, Ga.



GLYNN SOWELL Stilson, Ga.
 MARION SMITH Ludowici, Ga.
 SYBIL FEETS Brooklet, Ga.
 LOIS THORNTON Vada, Ga.
D. L. D.



ELIZA TIPPINS Claxton, Ga.
 EVELYN UNDERWOOD Statesboro, Ga.

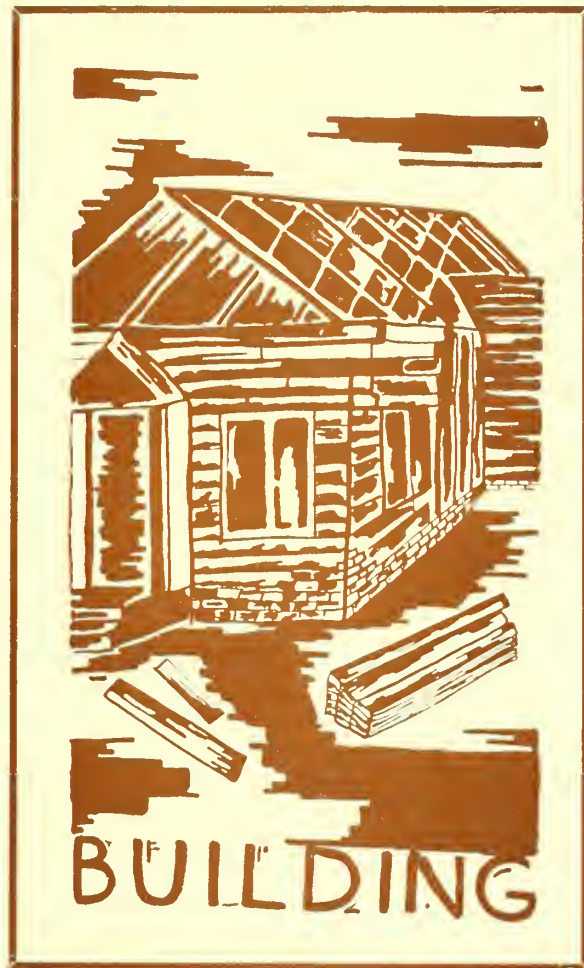
GRACE WALKER Savannah, Ga.
 GLADYS WALLER Swainsboro, Ga.

ELOISE WARREN Stillmore, Ga.
Epicurean
 NED WARREN Pulaski, Ga.
Iota Pi Nu
 HOWARD WATERS Hilltonia, Ga.
 LOUISE WATKINS Reidsville, Ga.

LILLIAN WELLS Collins, Ga.
 JEANNETTE WILLETS Vidalia, Ga.
 MELBA WILLIAMS Register, Ga.
 WINNIE ZITTROWER Savannah, Ga.

FRANCES NEAL Montezuma, Ga.
 DORWARD FULFORD Summit, Ga.
Delta Sigma
 LORRINE HATCHER Kite, Ga.
 LOUISE YOUNG Vidalia, Ga.





FRESHMAN CLASS

FRANK MULLING	President
DAVID PROCTOR	Vice-President
R. M. HORTON	Secretary and Treasurer
JOHN DANIEL DEAL	Student Council Representative

REFLECTOR

1936



FRANK MITCHELL, *President* Banley, Ga.
Iota Pi Xi
 DAVID PROCTOR, *Vice-President* Woodbine, Ga.
Iota Pi Xi
 R. M. HORTON, *Secretary-Treasurer* Jesup, Ga.
Delta Sigma
 JOHN DANIEL DUMAS Statesboro, Ga.
Student Council Representative
Delta Sigma
 GEORGE ABELSON Savannah, Ga.
 FRED P. ADAMS Haleyondale, Ga.
 ERNEST AGUIRRE Cienfuegos, Cuba
 JAMIE ALDRED Statesboro, Ga.
 TOM ALLEN Shellman, Ga.
 MARGARET ALEXANDER Reidsville, Ga.
 LITTLETON ALTMAN Brooklet, Ga.
 RUBY ALTMAN Alma, Ga.
 EENE ANDERSON Register, Ga.
 WINONAH ANDERSON Vidalia, Ga.

W. H. ARSOLD, *Delta Sigma*
 ABA ELIZABETH BACON

LAYTON BACON
 MARJORIE BACON
 LOIS BANKS
 ASA BARNARD

MARGARET BAXTER
 EDWARD BECK
 GRACE BELINGFIELD, *D. I. D.*
 FAULYN BLANCHARD

MARVIN BOOTH
 HILDA BOWEN
 J. R. BOWEN
 BOBBIE BOYKIN

Parrott, Ga.
 Pembroke, Ga.

Pembroke, Ga.
 Pembroke, Ga.
 Glenngville, Ga.
 Glenngville, Ga.

Statesboro, Ga.
 Savannah, Ga.
 Rentz, Ga.
 Appling, Ga.

Manor, Ga.
 Lyons, Ga.
 Claxton, Ga.
 Sylvania, Ga.



REFLECTOR

1936

MARGARET BRASINGTON, *Phi Upsilon* Wavercross, Ga.
 SUSAN ANN BRASWELL Stilson, Ga.
 DOROTHY BROCK Odum, Ga.
 ROBERT BRINSON Millen, Ga.
 JAMES BROPHY Rhine, Ga.
 BETTY BROWDER Odum, Ga.
 SAM BROWN Cordele, Ga.
 LUCY BUNCE Statesboro, Ga.
 DOROTHY BUNN Waresboro, Ga.
 MARION CARPENTER, *Tota Tri-Victa* Lauderdale, Fla.
 EDWARD CARROLL, *Delta Sigma* Louisville, Ga.
 ROBERT CARROLL Sparta, Ga.



MARIE CHANCE Perkins, Ga.
 MINNIE CHANCE, *D. I. D.* Oglethorpe, Ga.



WILLARD CLANTON Ellabell, Ga.
 MARGARET CLARK Garfield, Ga.
 MARCELE CLIETI, *Dux Domina* Bainbridge, Ga.
 LEROY COWART, *Delta Sigma* Statesboro, Ga.
 HELEN CROMARTIE, *I. O. U.* Soperton, Ga.
 RALPH CROWE, *Delta Sigma* Gainesville, Ga.
 MARY CULBRETH Wavercross, Ga.
 FLORENCE DALEY, *D. I. D.* Statesboro, Ga.
 ALICE PEARL DAVIS, *I. O. U.* Howell, Ga.
 BONNIE DAVIS Summit, Ga.
 PEROL DAVIS, *Dux Domina* Screven, Ga.
 C. C. DELOACH Pembroke, Ga.
 SUSAN DENSON Bay Branch, Ga.
 PAUL DIXON Millen, Ga.

REFLECTOR

1936



JAMES DOZIER Montezuma, Ga.
 MAUDIE DRAKE Claxton, Ga.
 CLYDE DURDEN Swainsboro, Ga.
 JOSEPH C. DURDEN Columbus, Ga.
 J. C. DURRENCE Claxton, Ga.
 JACK EASON Reidsville, Ga.
 MRS. W. T. EVANS Washington, Ga.
 ANNE FELTON, L. T. C. Ideal, Ga.
 VINCENT FERRERIA Macon, Ga.
 MILTON FINDLEY Lyons, Ga.
 D. B. FRANKLIN, JR. Statesboro, Ga.
 MARTHA FRAZIER Statesboro, Ga.
 MARIANNE FRENCH St. Mary's, Ga.
 OLIVER FUSSELL Dawson, Ga.

BESSIE GEIGER, *Episcopian*
 JOHN GILBERT

Pembroke, Ga.
 . . . Dublin, Ga.

GUILLERMO GOMEZ
 ROBERTO GOMEZ
 THOMAS GRADY, *Delta Sigma*
 A. C. GUY

Cienfuegos, Cuba
 Cienfuegos, Cuba
 . . . Augusta, Ga.
 . . . Americus, Ga.

HERCIE HAMILL
 MARTHA HARDIN, *Dux Donut*
 JACK HARLEY
 SALLY HARPER

Arlington, Ga.
 . . . Appling, Ga.
 . . . Baxley, Ga.
 . . . Wray, Ga.

BURICE HARRELL
 THELMA HARRISON
 RUSSELL HARRISON
 GEORGE HARTSHORN

Climax, Ga.
 Haleyondale, Ga.
 . . . Adrian, Ga.
 . . . Griffin, Ga.



REFLECTOR

1936

J. R. HARVEY
 NORMA HARVEY
 MARGARET HAYSHIP
 THOMAS HAWES

GLENN HEATH
 ELI HILL
 ETHEL HILL
 HAZEL HINEY

MARGARET HODGES, *L. T. C.*
 NEAL HODGES
 RAY HODGES
 MARTHA HOLLINGSWORTH

LONNIE HOLLOWAY
 FRANK HOOK, *10th P. V.*

Jesup, Ga.
 Pembroke, Ga.
 Statesboro, Ga.
 Waynesboro, Ga.

Augusta, Ga.
 Dawson, Ga.
 Hilltonia, Ga.
 Springfield, Ga.

Statesboro, Ga.
 Guyton, Ga.
 Claxton, Ga.
 Fairfax, Ga.

Graymont, Ga.
 Statesboro, Ga.



RUBY HOWARD
 AMANDA HUGHES

MARGARET HUMPHREYS
 STROZIER HUMPHREYS
 JAMES HUSSEY
 HAZEL HUTCHESON

KATHRYN HUTCHESON
 VILNA HUTCHESON
 EVELYN JOHNSON
 VIVIE JOHNSON, *L. T. C.*

WINIFRED JOHNSON
 ALMA JONES, *Epicurean*
 BENJAMIN JONES
 RALPH KEMP

Ludowici, Ga.
 Glennville, Ga.

Barwick, Ga.
 Barwick, Ga.
 Statesboro, Ga.
 Adrian, Ga.

Adrian, Ga.
 Soperton, Ga.
 Garfield, Ga.
 Wadley, Ga.

Register, Ga.
 Perry, Ga.
 Washington, Ga.
 Statesboro, Ga.

REFLECTOR

1936



VERA KESSLER
KATHLEEN KITCHEN
MATTIE LEE LANE
MATILDA LANG

ANNIE MAE LEE
GEORGE LOPEZ
MARTHA McELVEEN
LENARD McELVEEN

LOUISE MCKINLEY, *L. O. U.*
WILLIAM MCKENZIE
D. O. MCKINNEY, Jr., *Iota Phi Nu*
EVELYN McLEAN

MALCOLM MANN
BARNELL MARTIN

Marlow, Ga.
Statesboro, Ga.
Pembroke, Ga.
Waverly, Ga.
Statesboro, Ga.
Cienfuegos, Cuba
Arcola, Ga.
Arcola, Ga.

Siloam, Ga.
Glennville, Ga.
Gainesville, Ga.
Midville, Ga.

Statesboro, Ga.
Alamo, Ga.

JESSIE MATHIS
ELOISE MERCER

BARTOW MILLER
WOODROW MIXON
JULIA MOYE
NASH MURPHY

CLOTEEN MUSIC
ESTELLE NAIL, *L. O. U.*
W. G. NEVILLE, JR.
T. E. NEWBERRY

JEWELL NEWTON
FRANCES NICHOLS
MARION NORRIS, *Dux Domina*
JACK PARKS

Wrens, Ga.
Donovan, Ga.

Cusseta, Ga.
Vidalia, Ga.
Adrian, Ga.
Marshallville, Ga.

Waresboro, Ga.
Collins, Ga.
Statesboro, Ga.
Iron City, Ga.

Millen, Ga.
Portal, Ga.
Augusta, Ga.
Homer, Ga.



CATHERINE PARRISH
EDITH PARRISH
GRAYDON PIERCE
RUTH POUND, *L. T. C.*

PRISCILLA PRATHER, *Ipsicurian*
W. A. PRATHER
CARL RABY, *Delta Sigma*
JAMES RATCLIFFE

CURTIS RAY, *Delta Sigma*
LILLIAN REDDICK, *Dna Domina*
FRANK REDDISH
ALICE RHODES

RALPH RHODES
WM. A. RIDDLE

Portal, Ga.
Vadosta, Ga.
Rocky Ford, Ga.
Swainsboro, Ga.

Washington, Ga.
Washington, Ga.
Statesboro, Ga.
Waynesboro, Ga.

Baxley, Ga.
Bainbridge, Ga.
Jesup, Ga.
Statesboro, Ga.

Dexter, Ga.
Millen, Ga.



SAM ROUSE
VIRGINIA SANDS, *Dna (Gallatin)*

ROBERTO SANTAMARINA
MILDRED SCOTT
C. D. SHELEY
EVERETT SMILEY

ANNA CARROLL SMITH, *Dna Domina*, Bainbridge, Ga.
BERNICE E. SMITH, JR., Daisy, Ga.
CLARICE SMITH, Waycross, Ga.
MARY BRENT SMITH, Mosella, Ga.

JEAN SMITH
RUBY SMITH
KEITH SMITH
CHARLES STANFIELD

Sylvester, Ga.
Daisy, Ga.

Havana, Cuba
Collins, Ga.
Haleyondale, Ga.
Blackshear, Ga.

Statesboro, Ga.
Blackshear, Ga.
Manassas, Ga.
Glenville, Ga.

REFLECTOR

1936



YETIVE STEWART	Bristol, Ga.
RICHARD STONE	Claxton, Ga.
CHARLES STRICKLAND	Claxton, Ga.
IRENE SWANN	Wrens, Ga.
CECILENE SWINSON	Statesboro, Ga.
JOHN W. SWINT	Gibson, Ga.
RICHARD TEBEAU	Guyton, Ga.
JUANITA THOMAS	Scott, Ga.
CATHERINE TODD	Reidsville, Ga.
BENJAMIN GRADY WALLER	Tennille, Ga.
WILLIAM S. WARE, <i>Iola Pi Nu</i>	Benevolence, Ga.
ROLAND WARNOCK	Statesboro, Ga.
FRANCES WATSON	Graymont, Ga.
CAROLL WEBB	Guyton, Ga.
SEBORN ROY WHITTLE	Iron City, Ga.
L. W. WHITE	Brooklet, Ga.
DOROTHY WILKINSON	Glennville, Ga.
HA WILLIAMSON	Metter, Ga.
JUANITA WILLIAMSON	Register, Ga.
SARA LEE WILSON	Statesboro, Ga.
MARY WINHAM	Glennwood, Ga.
FULLIE WINHAM	Glennwood, Ga.
JUANITA WOMACK	Garfield, Ga.
J. C. YFOMANS	Lexsy, Ga.

DORA WILLIE BRINSON	Woodcliff, Ga.
WHITEFIELD FOLSOM	Statesboro, Ga.
ISABELLE HARDY	Register, Ga.
L. C. LEE	Dover, Ga.
GEORGE KESLER	Augusta, Ga.
ADA MITCHEAM	Ludowici, Ga.
LAURA JEAN ODUM	Girard, Ga.
CORA OLIVER PAGE	Lyons, Ga.
JAMES PLUNKETT	Augusta, Ga.
GEORGE STRICKLAND	Pembroke, Ga.
WILLIAM TONCE	Bainbridge, Ga.



ACTIVITIES

"List to the voice of the swaying pines
What wisdom do they whisper."

Anon.

STUDENT GOVERNMENT

STUDENT GOVERNMENT organization depends for its effectiveness on the willingness of the students to cooperate in the management of their activities. Since its inauguration in the fall of 1934 there has been a noticeable development of this idea.

The governing bodies have continued to develop. As they become capable, new duties are assigned them. At the present all of the activities, social and departmental, are handled by students. Discipline problems have been at a minimum. This is in a measure due to the greater feeling of personal responsibility on the students' part. The attitude is taken that student government can render its greatest service through cooperation. The best work of the entire organization has been done in organizing the social activities. The Student Council conducts a planned social program which takes in every student on the campus. In line with the program of the council, all the social and departmental clubs planned their social affairs. This gives the college a well-balanced social program.

The Administrative Council has the task of drawing up the rules and regulations. From this body five students are elected to form the Administrative Board. On this board rests the task of administering the various committees. House Councils are in charge of the residence halls. These three units work hand in hand and give an efficient means of taking care of any problem that may arise.



J. D. CHERRY
President

LILLIAN SIMMONS
Vice-President

SARA REMINGTON
Secretary

KATHRYN SIMMONS
Treasurer



First Row: STEWART, DEKLE, GRAHAM, PURVIS, CHERRY, BELL, BECTON
Second Row: SIMMONS, REMINGTON, SIMMONS, WATSON, LAMBRIGHT, MULLING, DEAL

STUDENT COUNCIL

J. D. CHERRY *President*
 LILLIAN SIMMONS *Vice-President*
 SARA REMINGTON *Secretary*
 KATHRYN SIMMONS *Treasurer*

MEMBERS

BILL STEWART *President of Senior Class*
 GWYNDOLYN DEKLE *Senior Representative*
 ELOISE GRAHAM *Senior Representative*
 J. D. PURVIS *Senior Representative*
 EUGENE BELL *President of Junior Class*
 LEWIS BECTON *Junior Representative*
 KATHRYN SIMMONS *Junior Representative*
 HOLDER WATSON *President of Sophomore Class*
 JOE E. LAMBRIGHT *Sophomore Representative*
 FRANK MULLING *President of Freshman Class*
 JOHN DANIEL DEAL *Freshman Representative*



First Row: DEAN HENDERSON, DR. DESTLER, CHERRY, SIMMONS, REMINGTON, SIMMONS, ESPY
Second Row: BRANNEN, CARTER, ROZIER, BACON, WINHAM, MISS VEAZY, MISS JOHNSON, DR. CARRUTH

ADMINISTRATIVE COUNCIL

DEAN HENDERSON *Chairman*
 DR. DESTLER *Secretary*

MEMBERS

J. D. CHERRY *President of Student Council*
 LILLIAN SIMMONS *Vice-President of Student Council*
 SARA REMINGTON *Secretary of Student Council*
 KATHRYN SIMMONS *President of East Hall*
 ROBERT ESPY *President of West Hall*
 MILDRED BRANNEN *President of Anderson Hall*
 GEORGE CARTER *President of Alumni Building*
 LOUISE ROZIER *President of Garruth Hall*
 OPAL BACON *President of Brown Cottage*
 TULLIE WINHAM *President of Scout Camp*
 MISS MAMIE VEAZY *Dean of Women*
 MISS SOPHIE JOHNSON *Dean of Men*
 DEAN HENDERSON *Dean of Faculty*
 DR. CARRUTH *Dean of Senior College*
 DR. DESTLER *Dean of Junior College*

Y. W. C. A.



GRACE CROMLEY
President

PURPOSE

The Young Women's Christian Association of South Georgia Teachers College pledges itself to promote growth in Christian character and service through physical, social, mental and spiritual training and to become a social force for the extension of the kingdom of God.

Its members unite in the desire to realize full and creative life through a growing knowledge of God, and determine to have a part in making this life possible for all people.

The aim is to establish a closer contact with all types of girls on the campus, and through this contact to attempt to give a girl a finer understanding of herself and the world about her.



EDNA WILLIAMS
Vice-President



VERNICE BACON
Secretary



MARY ROGERS
Treasurer

CABINET

LOIS THORNTON *Vespers*

DORIS STEPHENSON *Pianist*

IDA MAE HAGIN } . . . *Morning Watch*
ETHEL BETHEA }

VERNA LASSETER *Social*

CLEO TRAPNELL *Social Service*

LAURA HICKEY . . . *Freshman Commission*

FRANCES CONE *World Fellowship*

LOUISE ROZIER *Publicity*

HELEN MCGARRAH . . . *Peace Emphasis*

MRS. ALVIN A. SINGLEY }
MRS. ZACH S. HENDERSON } . *Sponsors*
MRS. FIELDING D. RUSSELL }





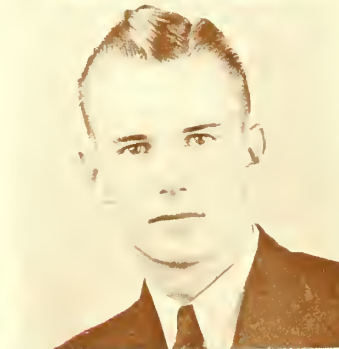
GEORGE CARTER
President



E. D. RAULERSON
Vice-President



ROBERT ESPY
Secretary



BARTON STEPHENS
Treasurer

Y. M. C. A.

The Young Men's Christian Association of South Georgia Teachers College, since its organization in 1929, has sought to help students preserve and apply whatever religious and moral values they may have developed before coming to college, and to make possible a spiritual growth in the lives of all these students. These things are accomplished by offering each a chance for religious thought and study; by providing opportunity for experience where ideals and principles may be lived in life situations; and by creating a consciousness of new trends and values in connection with our fellowman.

The "Y" also concerns itself with the social training of the students. It endeavors to make this part of their education as rounded as possible by providing a social environment equal to and worthy of their mental development. Members are also given valuable training in learning to express themselves clearly before an audience.

During its existence here, the Y. M. C. A. has established for itself a fine reputation and strong support for its influence in bettering campus life.

STANDING COMMITTEES

MARTIN

BRIDGES

Lespers

HOWELL MARTIN

Pianist

JOHN BRIDGES

FIELDS

HODGES

Social

WILL FIELDS

Membership

HUGH HODGES

ENGLAND

RUSSELL

Social Welfare

KENNETH ENGLAND

Sponsors

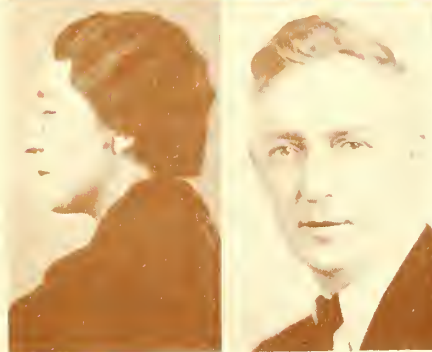
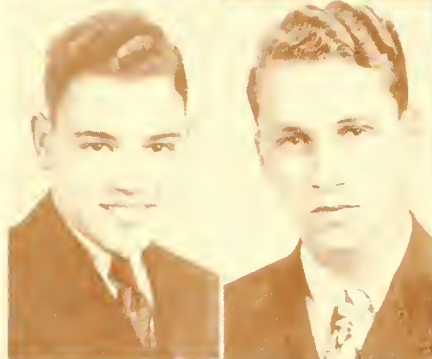
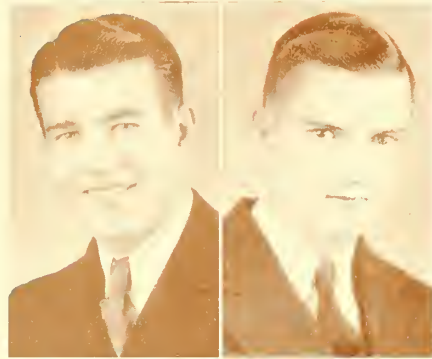
MR. FIELDING RUSSELL

MISS SOPHIE JOHNSON

MR. ROBERT L. WINBURN

JOHNSON

WINBURN





STEPHENS LITERARY SOCIETY

OFFICERS

	<i>Spring 1935</i>	<i>Fall 1935</i>	<i>Winter 1936</i>
<i>President</i>	ROBERT ESPY	HEARN LUMPKIN	JOHN A. BLOUNT
<i>Vice President</i>	HEARN LUMPKIN	KATHRYN SIMMONS	ROY RABUN
<i>Secretary</i>	BONNIE LOU AYCOCK	JEANETTE WILLETS	DOUGLAS DURDEN
<i>Treasurer</i>	GENE DAVIS	MATTIE CAIN	VERNICE BACON

DEBATERS

	<i>Spring</i>	<i>Fall</i>	
	BONNIE LOU AYCOCK	FLORENCE DALEY	
	BARTON STEPHENS	JOHN A. BLOUNT	
MISS HESTER NEWTON			Sponsor

MEMBERS

FRED ADAMS	FLORENCE DALEY	ALMA JONES	C. D. SHELEY, JR.
JAMIE ALDRED	SUSAN DENSON	BEN JONES	CHARLES SHEPARD
MARGARET ALEXANDER	HARRY DELOACH	VIVIE JOHNSON	LILLIAN SIMMONS
RUBY ALTMAN	JANIE DURRANCE	VERA KESLER	MARION SMITH
GUS BAIRD	ROBERT ESPY	VERNA LASSETER	BARTON STEPHENS
ASA BARNARD	ANN FELTON	ANNIE MAE LEE	CECILENE SWINSON
MARGARET BAXTER	HARLAND FETZER	JESSIE MAE MATHEIS	JOHN W. SWINT
ETHEL BETHA	ELAINE FOSTER	HELEN MCGARAH	LOIS THORNTON
EVELYN BLANCHARD	MARTHA HARDIN	D. O. MCKINNEY	BENJAMIN WALLER
SUSAN BRASWELL	RUTH HARDIN	FRANK MULLING	NED WARREN
DOROTHY BROCK	JACK HARLEY	ESTELLE NAIL	FRANCES WATSON
PETTY BROWDER	BURICE HARRELL	FRANCES NICHOLS	ROY WHITTLE
LUCY BUNCE	J. R. HARVEY	H. F. PARRISH	JAMES WILDER
DOROTHY BUNN	MELBA HARVEY	GRAYDON PIERCE	TOM ALLEN
JOE BUNTON	LEONARD HAWES	RUTH POUND	HERCHEL HAMILL
MINNIE CHANCE	MARGARET HAYSLIP	JAMES RATCLIFFE	JOHN SWINT
MARCELLE CHIFFT	LAURIE HILL	SARA REMINGTON	W. A. PRATHER
FRANCES COLE	JOHN HOLLINGSWORTH	MARJORIE RIVERS	VERA COOKE
GRACE CROMLEY	DESSIE HOLTON	PAUL ROBERTSON	ROLAND WARNOCK
MARY CULBRETH	JAMIE HOOKS	VIRGINIA SANDE	FAY FOY
EUNICE DAVIS	RUBY HOWARD	MARY ROGERS	ILA WILLIAMS
FEROI DAVIS	JAMES HUSSEY	LOTTIE ROUNTREE	KATHRYN SIMMONS



OGLETHORPE LITERARY SOCIETY

OFFICERS

	<i>Spring 1935</i>	<i>Fall 1935</i>	<i>Winter 1935</i>
<i>President</i>	MARVIN MCKNEELY	MILDRED BRANNEN	ETHEL MAE BYRD
<i>Vice-President</i>	IRENE ENECKS	LAURA HICKEY	MARGARET BRASINGTON
<i>Secretary</i>	ISABELLE CROSS	ANNA CODY	MILDRED BRANNEN
<i>Treasurer</i>	BURNIE MALLORY	HUGH HODGES	EDWARD CARROLL

DEBATERS

<i>Spring</i>	<i>Fall</i>
ETHEL MAE BYRD	ELIZABETH WATKINS
WOOBROW POWELL	JOHN WIGGINS
MR. FIELDING RUSSELL	Sponsor
MRS. BUTTRELL	Sponsor

MEMBERS

RICHARD BOATRIGHT	CATHERINE MCCORKLE	ELIZABETH WATKINS
MILDRED BRANNEN	MARVIN MCKNEELY	GEORGE CARTER
ETHEL MAE BYRD	ELIZABETH MOODY	MARTHA WOOD
ANNA CODY	HARVIN MULKEY	BILL WARE
EUNICE DAVIS	MILDRED MURROW	JOHN WIGGINS
IRENE ENECKS	MYRTLE OLIVENT	EDWARD CARROLL
KENNETH ENGLAND	LILLIAN REDDICK	MARGARET BRASINGTON
ELISE FITZER	IRIS ROBERTS	R. M. HORTON
WILL FIELDS	LEROY ROUGHTON	T. E. NEWBERRY
ELOISE GRAMAM	BILL STEWART	NASH MURPH
BARBARA GRAY	ELIZA TIPTINS	GRACE BEDINGFIELD
LAURA HICKEY	JAMES TOWNSEND	GEORGE DONALDSON
HUGH HODGES	HELEN GODBY	CHRISTINE RAHN
HOWELL MARTIN	IDA MAE HAGIN	JOHN GILBERT
	CED TRAPNELL	

HOME ECONOMICS CLUB



OFFICERS

CLEO TRAPNELL *President*

DORIS STEVENSON . . *Vice-President*

VERNA LASSETER *Secretary*

LOUISE ROZIER *Treasurer*

MISS BOLTON { *Sponsors*
MISS SMALL }

Top: TRAPNELL, STEVENSON, LASSETER
Bottom: ROZIER, BOLTON, SMALL

MEMBERS

EVELYN BURCH
MATTIE CAIN
EUNICE DAVIS
LOKELA ELTON
BARBARA GRAY
IDA MAE HAGIN
MARGARET HODGES
NONA KENNEDY
VERSIE KENNEDY

RUBY HOWARD
VERNA LASSETER
CAROLYN LEWIS
NINA MOORE
JOSEPHINE MUNSON
LAURA HICKEY
MARJORIE RIVERS
MARY ROGERS
LOTTIE ROUNTREE
LOUISE ROZIER

RUBY ROZIER
SARA REMINGTON
KATHRYN SIMMONS
DORIS STEVENSON
ELIZA TIPPINS
CLEO TRAPNELL
CAROLYN WARNELL
ELWYN WILSON
LILLIAN WELLS



First Row: BURCH, CAIN, DAVIS, ELTON, GRAY, HAGIN, HODGES, KENNEDY
Second Row: KENNEDY, HOWARD, LEWIS, MOORE, MUNSON, HICKEY, RIVERS, ROGERS
Third Row: ROUNTREE, ROZIER, REMINGTON, SIMMONS, TIPPINS, WARNELL, WILSON, WELLS

DRAMATIC CLUB

OFFICERS

ELOISE GRAHAM	<i>President</i>
IRENE ENECKS	<i>Vice-President</i>
GEORGE CARTER	<i>Secretary</i>
VERNA LASSETER	<i>Treasurer</i>
BENJAMIN JONES	<i>Property Manager</i>
DR. STROUP	<i>Faculty Advisor</i>

PLAYS PRESENTED

"Night at An Inn"
 "Weakness for Nurses"

"The Boor"
 "Dulcy"

MEMBERS

SUDIE LEE AKINS
 LOUIS BECTON
 BOBBIE BOYKIN
 JOHN BRIDGES
 ETHEL MAE BYRD
 GEORGE CARTER
 WILLARD CLANTON
 FRANCES CONE
 GRACE CROMLEY
 FLORENCE DALEY
 GEORGE DONALDSON
 DOUGLAS DURDEN
 KENNETH ENGLAND

IRENE ENECKS
 WILL FIELD
 FAY FOY
 WILLIAM GARRISON
 ELOISE GRAHAM
 THELMA HARRISON
 BOB HARRIS
 ALICE HILL
 JAMIE HOOKS
 R. M. HORTON
 JAMES HUSSEY
 VIVIE JOHNSON
 BEN JONES

VERNA LASSETER
 HOWELL MARTIN
 MARVIN MCKNEELY
 FRANK MULLING
 RUTH POUND
 J. D. PURVIS
 CHRISTINE RAHN
 DORIS RAULERSON
 LEROY ROUGHTON
 MARION SMITH
 JAMES TOWNSEND
 CAROLYN WARNELL
 HARRY ZALUMAS





JOHNSON
AND
HICKEY



Left:
KENAN
ROUGHTEN
DONALDSON
McKNEELY

Center:
FIELDS
LAMBRIGHT
WILSON
GRAHAM

Right:
DURDEN
PURVIS
STEPHENS

The George-Anne

ESTABLISHED 1927

Member Georgia Collegiate Press
Association

Published Bi-Weekly by Students of
the South Georgia Teachers Col-
lege, Collegeboro, Ga. Address
Communications to Pox 183,
Collegeboro, Ga.

Subscription Rate: 10c per Copy,
\$1.00 per Year.

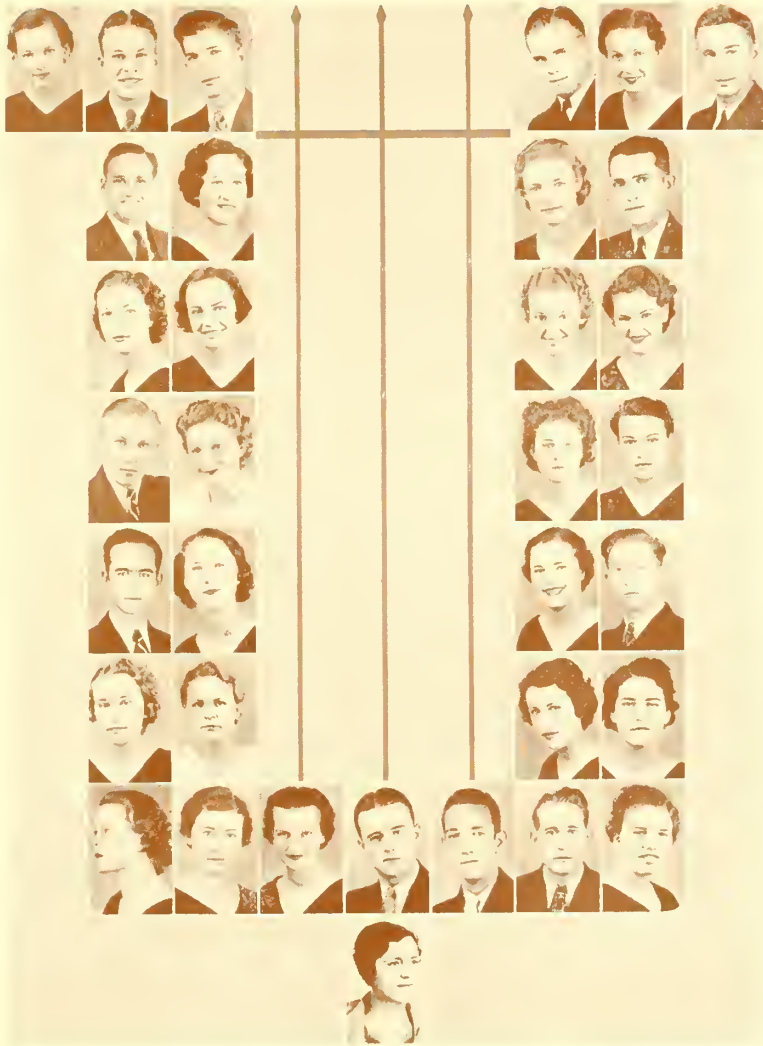
J. D. PURVIS Editor
MARVIN McKNEELY Managing Editor
GWYN DEKLE Business Manager
BARTON STEPHENS Circulation Mgr.

EDITORIAL STAFF

ELOISE GRAHAM, GEORGE DONALDSON,
LAURA HICKEY, DOUGLAS DURDEN,
HEMANS OLIVER, SHIELDS KENAN,
W. H. FIELDS, JOE LAMBRIGHT,
ELWYN WILSON, LeROY
ROUGHTON, VIVIE JOHNSON.

Entered as second-class matter at the
postoffice at Collegeboro, Ga.,
under temporary permit.





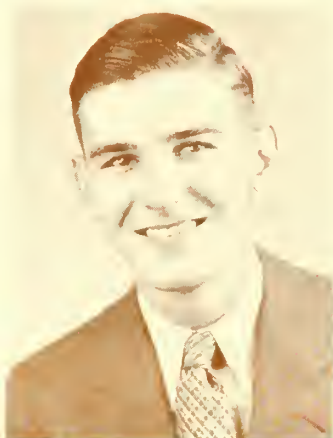
First Row: CROMLEY, ROBERTSON, WIGGINS, WARE, M. TOWNSEND, MANN
Second Row: BECTON, BETHEA, PLANCHARD, BUXTON. *Third Row:* DALFY,
 ENECKS, FREEMAN, FREEMAN. *Fourth Row:* GILBERT, GODBEE, HARRISON,
 HUTCHINSON. *Fifth Row:* KENAN, KITCHENS, McCORKLE, McKENZIE. *Sixth*
Row: MURROW, MUNSON, NORRIS, RAHN. *Seventh Row:* RHODES, RIVERS,
 ROUNTREE, SHEAROUSE, J. TOWNSEND, WHITTLE, WILLETTS. *Eighth Row:*
 MRS. BARNES.

GLEE CLUB

OFFICERS

GRACE CROMLEY	President
PAUL ROBERTSON	Vice-President
JOHN WIGGINS	Secretary and Treasurer
WILLIAM WARE	Manager
MRS. ESTHER WILBURN BARNES	Director
ROBERT SHELL	Assistant Director

REFLECTOR STAFF 1936



MARVIN MCKNEELY

Editor

Tomorrow the scenes and the faces pictured here will be but fond memories. It is the earnest wish of the staff that this, their yearbook, serve to keep alive friendships and depict some small part of our college life here.

EDITORIAL STAFF

HEARN LUMPKIN	<i>Associate Editor</i>
MAYO CODY GILLIAM	<i>Literary Editor</i>
LOUISE ROZIER	<i>Club Editor</i>
CLEO TRAPNELL	<i>Art Editor</i>
VERNA LASSETER	<i>Associate Art Editor</i>
GEORGE DONALDSON	<i>Sports Editor</i>
MISS MARY SMALL	<i>Faculty Advisor</i>



LUMPKIN



GILLIAM



ROZIER



TRAPNELL



LASSETER



DONALDSON

REFLECTOR STAFF 1936

ROBERT ESPY
Business Manager



The Business Staff of the REFLECTOR wishes to express its appreciation of the hearty cooperation that it has received in its work on this yearbook. Without this co-operation such a publication would have been difficult. We hope that it meets the approval of all.

BUSINESS STAFF

ALTON SETTLE	<i>Advertising Manager</i>
MATTIE CAIN	<i>Assistant Advertising Manager</i>
CAROLYN LEWIS	<i>Assistant Advertising Manager</i>
WENDELL MOORE	<i>Circulation Manager</i>
ELWYN WILSON	<i>Assistant Circulation Manager</i>
BLAKELY THORNTON	<i>Photographic Editor</i>
ROBERT DONALDSON	<i>Faculty Advisor</i>



SETTLE



CAIN



LEWIS



MOORE



WILSON



THORNTON



LITTLE SYMPHONY

<i>Violins</i>	{ GRACE CROMLEY, DOUGLAS DURDEN, RALPH KEMP, CORA PAGE,
<i>Cello</i>	{ EDWARD BEASLEY, S. E. SANCHEZ, JR., PAUL ROBERTSON
<i>Clarinet</i> H. F. PARRISH
<i>Horn</i> W. H. WARREN, MARION CARPENTER, PRISCILLA PRATHER
<i>Trombones</i> W. A. PRATHER
<i>Trumpets</i> JOHN WIGGINS, GESMAN NEVILLE, JR.
<i>Saxophones</i> ROBERT ROGERS, JOSH LANIER
<i>Bass</i>	- JAMES TOWNSEND, JOHN D. DEAL, JOHN BRINSON, B. E. SMITH
<i>Drums</i> JOHN GILBERT
<i>Piano</i> CARL COLLINS, MALCOLM MANN
 MARY TOWNSEND

STRING ENSEMBLE

<i>Violins</i> WILLIAM DEAL, GRACE CROMLEY
<i>Cello</i> H. F. PARRISH
<i>Piano</i> HELEN GODBEE





BAND

Clarinet	{ MARION CARPENTER, W. H. WARREN, PRISCILLA PRATHER, ROBERT ESPY,
Horn	{ RALPH KEMP, DOUGLAS DIRDEN, MARGARET ALEXANDER, JAMES TOWNSEND
Cornet	{ ROBERT ROGERS, JOSH LANIER, EDWARD BEASLEY,
Saxophone	{ ROBERT SHELL, ELMO BECK, FRANK DIRDEN
Baritone	{ JOHN BRINSON, B. E. SMITH, VINCENT FERRERIA,
Trombone	{ FORREST TOWNSEND, JOHN DANIEL DEAN
Bass	W. H. MCKENZIE
Drums	JOHN WIGGINS, GESMAN NEVILLE, MALCOLM MANN
Drum Major	JOHN GILBERT, PAUL ROBERTSON
	GRACE CROMLEY, CARL COLLINS
	W. H. ARNOLD

DANCE ORCHESTRA

Saxophone	MARION CARPENTER, B. E. SMITH, JAMES TOWNSEND
Trumpet	JOSH LANIER, ROBERT ROGERS
Trombone	JOHN WIGGINS, GESMAN NEVILLE
Bass	JOHN GILBERT
Piano	FRANK RUSHING
Violin	H. F. PARRISH
Drums	CARL COLLINS



“Ah, heavens! beside those foliaged giants,
How small the human dwarf.”

Hayne



SOCIAL CLUBS

BACHELORS

EPICUREANS

IOTA PI NU

DUX DOMINA

DELTA SIGMA

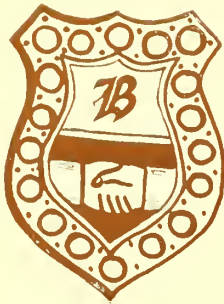
D. L. D.

L. T. C.

I O U

OFFICERS

ALTON SETTLE *President*
 MARVIN MCKNEELY *Vice-President*
 WILL FIELDS *Secretary*
 GEORGE CARTER *Treasurer*
 MISS RUTH BOLTON *Faculty Sponsor*
 MISS MARIE WOOD *Faculty Sponsor*



Founded 1928
 COLORS: *Green and White*
 FLOWER: *Bachelors Button*
 MOTTO:
"Beware of women"

BACHELORS CLUB

MEMBERS

JOHN BARGERON
 GEORGE CARTER
 MERCER COLLINS
 TOM EDWARDS
 ROBERT ESPY
 WILL FIELDS
 HUGH HODGES
 HOWELL MARTIN
 MARVIN MCKNEELY
 WAYNE MCKNEELY
 DERRICK MINCEY

WENDELL MOORE
 J. D. PURVIS
 ROY RABUN
 PAUL ROBERTSON
 LEROY ROUGHTEN
 ALTON SETTLE
 BILL STEWART
 BLAKELY THORNTON
 JAMES TOWNSEND
 HOLDER WATSON
 JIM WRINKLE



First Row: SETTLE, MCKNEELY, FIELDS, CARTER, BARGERON, COLLINS, EDWARDS, ESPY.
Second Row: HODGES, MARTIN, MCKNEELY, BOLTON, WOOD, MINCEY, MOORE, PURVIS.
Third Row: RABUN, ROBERTSON, ROUGHTEN, STEWART, THORNTON, TOWNSEND, WATSON, WRINKLE.

REFLECTOR

1936



OFFICERS

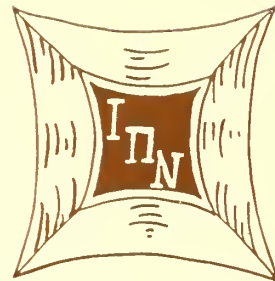
ROBERT POUND *President*
 BILL KENNEDY *Vice-President*
 ROY RABIN *Secretary*
 ALTON SETTLE *Treasurer*
 EVELYN MATHEWS *Sponsor*
 MRS. BILL BOWEN *Faculty Advisor*

IOTA PI NU

MEMBERS

BOB POUND	JIM WRINKLE
BILL KENNEDY	FRANK MULLING
ROY RABIN	DERRICK MINCEY
ALTON SETTLE	NED WARREN
DAVID PROCTOR	FORREST TOWNSEND
D. O. MCKINNEY	JAMES TOWNSEND
BILL WARE	GLENN RHODES
MARION CARPENTER	GEORGE CARTER
FRANK HOOK	BARTON STEPHENS
JOSH LANIER	PAUL ROBERTSON
HOBSON DUBOSE	BOBBIE McLEMORE
CARL COLLINS	HUGH HODGES

JOHN WIGGINS



HISTORY:
 Founded 1931
 COLORS: Scarlet and Emerald
 FLOWER: Poinsettia



First Row: POUND, KENNEDY, RABIN, SETTLE, PROCTOR, MCKINNEY, WARE, CARPENTER, HOOK. *Second Row:* LANIER, DUBOSE, COLLINS, WRINKLE, MATHEWS, MRS. BOWEN, MULLING, MINCEY, WARREN. *Third Row:* TOWNSEND, TOWNSEND, RHODES, CARTER, STEPHENS, ROBERTSON, McLEMORE, WIGGINS.

OFFICERS

EARL RIGGS *President*
 EUGENE BELL *Vice-President*
 JOE E. LAMBRIGHT *Secretary*
 WILLIAM GARRISON *Treasurer*
 ROBERT ESPY *Chaplain*
 MENZA CUMMING *Sponsor*
 DR. R. J. H. DELOACH *Advisor*



HISTORY:
 Founded G. S. M. C., Tifton,
 Ga., 1929; S. G. T. C., 1932
 COLORS: Gold and Blue
 FLOWER: Red Rose

DELTA SIGMA

MEMBERS

EMORY ALLEN
 W. H. ARNOLD
 A. A. BAIRD
 EUGENE BELL
 EDWARD CARROLL
 LEROY COWART
 RALPH CROWE
 JOHN DEAL
 JAMES DEAL
 ROBERT ESPY
 DURWOOD FULFORD

WILLIAM GARRISON
 ALBERT GREEN
 R. M. HORTON
 JOE E. LAMBRIGHT
 MARVIN MCKNEELY
 WAYNE MCKNEELY
 CARL RABY
 CURTIS RAY
 EARL RIGGS
 BLAKELY THORNTON
 HOLDER WATSON



First Row: RIGGS, BELL, LAMBRIGHT, GARRISON, ALLEN, ARNOLD, BAIRD, CARROLL. Second Row: COWART, CROWE, DEAL, CUMMING, DR. DELOACH, DEAL, ESPY, FULFORD. Third Row: GREEN, HORTON, MCKNEELY, MCKNEELY, RABY, RAY, THORNTON, WATSON.

REFLECTOR

1936



First Row: SIMMONS, REMINGTON, ENECKS, JOSEY, DESTLER, CROMLEY, REMINGTON. *Second Row:* CROMLEY, FELTON, HODGES, JOHNSON. *Third Row:* JOHNSON, LASSETER, MCGARRAH, POUND, ROZIER, SIMMONS, WATSON.

L. T. C.

KATHERINE SIMMONS	<i>President</i>
SARA REMINGTON	<i>Vice-President</i>
IRENE ENECKS	<i>Secretary</i>
BETTY JOSEY	<i>Treasurer</i>
DR. DESTLER	<i>Faculty Sponsor</i>
ANNE REMINGTON	<i>Mascot</i>

MEMBERS

GRACE CROMLEY
MARY CROMLEY
IRENE ENECKS
ANNE FELTON
MARGARET HODGES
EVELYN JOHNSON
VIVIE JOHNSON
BETTY JOSEY

VERNA LASSETER
JOHNNIE M. KELLEY
HELEN MCGARRAH
RUTH POUND
SARA REMINGTON
LOUISE ROZIER
KATHRYN SIMMONS
LILLIAN SIMMONS

MOTTO:

To strive, to seek, to find, and not to yield.

EPICUREANS

LAURA HICKEY *President*
 MILDRED BRANNEN *Vice-President*
 ELOISE GRAHAM *Secretary and Treasurer*
 IDA KENT *Chaplain*
 MR. AND MRS. WML. DEAL *Sponsors*

MOTTO:
Eat, Drink and Be Merry.

MEMBERS

MILDRED BRANNEN	ELOISE GRAHAM
MARGARET BRASINGTON	LAURA HICKEY
FRANCES CONE	ALMA JONES
ELOISE GRAHAM	PRISCILLA PRATHER
BARBARA GRAY	ELOISE WARREN
JEAN SMITH	BESSIE GIEGER

HARRIET VANDIVER

COLORS:
Red and White

HISTORY:
Founded 1929

First Row: HICKEY, BRANNEN, GRAHAM, KENT. *Second Row:* BRASINGTON, CONE, SMITH
GIEGER. Third Row: GRAY, JONES, DEAL, DEAL, PRATHER, WARREN.



REFLECTOR

1936



First Row: Hill, Harvey, Cain, Moody, Reddick, Mr. Russell, Mrs. Russell. Second Row: Cliett, Davis, Fielding Russell, Jr., Foy, French. Third Row: Hardin, Hardin, McWaters, Norris, Rountree, Sands, Smith.

DUX DOMINA

Alice Hill	President
Melba Harvey	Vice-President
Mattie Cain	Secretary
Elizabeth Moody	Treasurer
Lillian Reddick	Chaplain
Mr. Fielding D. Russell	Sponsor
Mrs. Fielding D. Russell	Sponsor
Fielding Russell, Jr.	Mascot

MEMBERS

MATTHE CAIN
MARCELLE CLIETT
FEROL DAVIS
FAY FOY
MARIANNE FRENCH
MARTHA HARDIN
RUTH HARDIN
MELBA HARVEY

ALICE HILL
LEAH DORA MCWATERS
ELIZABETH MOODY
MARION NORRIS
LILLIAN REDDICK
LOTTIE ROUNTREE
VIRGINIA SANDS
ANNA CARROLL SMITH

MOTTO:

To lead rather than be lead.

COLORS:

Yellow and White

FLOWER

Daisy

D. L. D.

ETHEL MAE BYRD *President*
 ANNA CODY *Vice-President*
 CAROLYN WARNELL *Secretary and Treasurer*
 JAY B. WESTCOTT *Faculty Sponsor*

MEMBERS

ETHEL MAE BYRD	FLORENCE DALEY
EVELYN BURCH	CATHERINE McCORKLE
GRACE BEDINGFIELD	GERTRUDE MOBLEY
MINNIE CHANCE	LOIS THORNTON
ANNA CODY	CAROLYN WARNELL

MOTTO:

A good time in a good way.

FLOWER:

Old Maid.

First Row: BYRD, CODY, WARNELL, BURCH. *Second Row:* DALEY, BEDINGFIELD, CHANCE, McCORKLE. *Third Row:* THORNTON, WESTCOTT, MOBLEY.



REFLECTOR

1936

I O U



OFFICERS

JOSEPHINE MUNSON . . . *President*
 WYNNIS ROBERTS . . . *Vice-President*
 VERA COOK *Secretary*
 DESSIE HOLTON *Treasurer*

ADVISORS

DR. J. E. CARRUTH . . . *Advisor*
 MRS. J. E. CARRUTH . . . *Advisor*
 MISS QUEEN COLLINS . . . *Sponsor*
 JAMES DIXON *Sponsor*

MEMBERS

JOSEPHINE MUNSON
 DESSIE HOLTON
 LOUISE MCKINLEY
 JAMIE HOOKS

GRACE WALKER
 PAT ROBERTS
 HELEN CROMARTIE

WYNNIS ROBERTS
 EUNICE DAVIS
 VERA COOKE
 GWYNDOLYN DEKLE

MOTTO:

*"While struggling to find the right
 Yield not to the wrong."*

COLORS:

Purple and Gold

FLOWER:

Pansy



*First Row: MUNSON, ROBERTS, COOKE, HOLTON, COLLINS, DIXON, DR. CARRUTH.
 Second Row: MCKINLEY, HOOKS, WALKER, ROBERTS, CROMARTIE, DAVIS, DEKLE*



ATHLETICS

"Heaven and earth help him who plants a tree,
And his work its own reward shall be."

L. Larcom



COACH SMITH



MISS CARO LANE



MR. DONALDSON

ATHLETIC DIRECTORS

JIM WRINKLE	<i>Instructor in Physical Education</i>
GENERIA H. BOWEN	<i>Instructor in Physical Education</i>
FIELDING RUSSELL	<i>Boxing Coach</i>
WILLIAM S. HANNER	<i>Tennis Coach</i>
JAY B. WESTCOTT	<i>Track Coach</i>

BYRON L. SMITH

Director of Men's Physical Education

Byron L. Smith, head coach at South Georgia Teachers College, was Mercer's first four-letter man. Coach Smith received his early education at Lincoln High School in Tennessee and at Bryson College. He attended Mercer in the days when the "Bears" inspired terror in Southern football stadiums. He received his Masters degree at the University of Michigan.

During the seven years that he has been at the college he has stood for fair play and his winning teams have been his contribution to the school spirit.

MISS CARO LANE

Director of Women's Physical Education

Miss Caro Lane, head of the Women's Physical Education Department received her B.S. at G. S. C. W. She received her Masters degree at Peabody College. Besides this, Miss Lane has attended summer sessions at the University of Virginia, University of Wisconsin, Harvard, and Columbia.

Miss Lane has made her influence felt on the campus. Besides directing Women's Physical Education, she is the sponsor of the Women's Athletic Association.

The school will miss her next year, but "All good wishes for continued success is our wish."

Teachers 13 - Abraham Baldwin 0
 Teachers 14 - Douglas 14
 Teachers 0 - Tampa 19
 Teachers 25 - G.M.C. 12



Fererra



Fulford



Lambright



Golden



Crowe



Kesler



Oliver



Hartshorn



TEA
I

Teachers 26 -Alabama Teachers 28
 Teachers 0 -Appalachian 0
 Teachers 14 -Cochran 7
 Teachers 6 -Stetson 9



Hines



Riggs



Grady



Baird



Guy



Acelson



Robertson



McKinney





Top Row: CARTER, N. WARREN, B. STEWART, DONALDSON, PURVIS, RYALS.
Bottom Row: GOLDEN, J. STEWART, ROBERTSON, ABELSON.

BASKETBALL 1936

With only Bill Stewart of last season's state championship team returning and further handicapped by the new rule eliminating the pivot play, Coach Smith built a cage outfit which scored victories over Mercer University, the Savannah Jewish Alliance, the Swift and Co. Packers, Middle Georgia College, South Georgia State, Albany Blues, and dropped contests to Norman Park, College of Charleston, Kentucky State Teachers and the Kate Smith Celtics.

Bill Stewart led the squad in scoring, being closely followed by Golden, Donaldson and Ned Warren in order named.



Goldby



Stewart



Ned Warren



Donaldson



Golden



Abelson



Pyals



J. Warren



Top Row (from left to right): COACH WESTCOTT, HOGAN, RYALS, McKNEELY. *Bottom Row:* CARTER, TONGE, DONALDSON, WRINKLE, THORNTON.

TRACK 1935

Two defeats in two starts marked the record of the 1935 Blue Tide track team. After losing their first meet to Brewton-Parker by an overwhelming score, the tracksters settled down to hard work to come out of the return engagement the loser by only two points. Wrinkle in the distance runs and the high hurdles was the most consistent winner.

Coach Jay Westcott, himself a hurdler of note, bids fair to produce winning track and field teams in the near future.

Those men who are out for the 1936 Track team are:

100-Yard Dash	Thornton, Oliver, Rushton, Gilbert, McKneely
220-Yard Dash	Oliver, Thornton, Gilbert, Rushton
440-Yard Dash	Adams, Rushton
Pole Vault	Rhodes, Carter
Broad Jump	Golden, McKneely, Oliver
High Jump	McKneely, Golden
Discus	Warren, Watson, Roker, Cherry
Hurdles	McKneely, Gilbert, Hamil
Relay	Thornton, Oliver, Golden, Rushton, Gilbert, McKneely



Upper Row (left to right): COACH RUSSELL, HARRISON, HOGAN, GEORGE STRICKLAND, CHARLES STRICKLAND, TOM EDWARDS, MANAGER FETZER. *Second Row:* CARTER, DEAL, FIELDING RUSSELL, JR. (MASCOT), JOSEY, DELOACH, BOWEN, SPURGEON, EDWARDS.

BOXING 1936

Greatly handicapped by lack of experienced material, Coach Russell deserves much credit for the record made by the boxing team. Men who had never donned the gloves before coming to T. C. developed into real fighters under his guidance and before the season was over were performing like veterans of the squared circle.

BOXING SCHEDULE

Boys High at Collegeboro—February 7			
T. C. . . .	5—Boys High . . .	1—Draws . . .	1
G. M. A. at Atlanta—February 14			
T. C. . . .	5—G. M. A. . . .	3—Draws . . .	0
University of Georgia at Athens—February 22			
T. C. . . .	2—U. of Ga. . . .	4—Draws . . .	1
University of Georgia at Collegeboro—February 28			
T. C. . . .	4—U. of Ga. . . .	2—Draws . . .	1

Knockouts

J. R. Bowen
Russell Harrison

George Strickland
John D. Deal

D. O. McKinney
Sam Jossey

W. A. A.

GWYNDOLYN DEKLE	<i>President</i>
SARA REMINGTON	<i>Vice-President</i>
KATHRYN SIMMONS	<i>Secretary</i>
LILLIAN SIMMONS	<i>Publicity Chairman</i>
MISS CARO LANE	<i>Sponsor</i>
MRS. GENERIA HONEYCUTT BOWEN	<i>Sponsor</i>

COUNCILLORS

MILDRED SMITH	<i>Volleyball</i>
MATTIE CAIN	<i>Soccer</i>
LAURA HICKEY	<i>Basketball</i>
MILDRED BRANNEN	<i>Swimming</i>
JANIE DURRENCE	<i>Baseball</i>
ELOISE GRAHAM	<i>Dancing</i>
ELIZABETH WATKINS	<i>Tennis</i>
LOUISE ROZIER	<i>Training School</i>
MARY ROGERS	<i>Individual Activities</i>



First Row: REMINGTON, SIMMONS, SIMMONS, SMITH. *Second Row:* CAIN, HICKEY, BRANNEN, DURRENCE. *Third Row:* GRAHAM, WATKINS, MISS LANE, DEKLE, MRS. BOWEN, ROZIER, ROGERS.

GROUP ACTIVITIES SPONSORED
BY W.A.A.



Tennis



Soccer



Swimming



Baseball



Basketball



Golf



BASEBALL 1935

Due to the fact that baseball has been discontinued as an intercollegiate sport, only the pictures of the 1935 diamond outfit were available.

TENNIS 1935

Although tennis is not considered as a major sport the intercollegiate team plays several games each year. The schedule has not yet been made up but games are expected with most colleges in South Georgia.



From Left to Right: BOWEN, ESLEY, SETTLE, CARROLL, HODGES.



FEATURES



Mattie Cain

MOST BEAUTIFUL



Elvise Graham

MOST OUTSTANDING GIRL



Louise Rejier

MOST POPULAR GIRL



J. D. Cherry
MOST OUTSTANDING BOY



Bill Stewart

MOST POPULAR BOY



Robert Espy

MOST HANDSOME

REFLECTIONS



Happenings

REFLECTIONS



Places and People

REFLECTIONS



More Places and People

REFLECTIONS



Noises, Nuts and Novelties



ADVERTISEMENTS



SANDERS STUDIO

“Sanders for Naturalness”



STATESBORO ‘ ‘ GEORGIA

Statesboro Undertaking Co.
Funeral Directors

AMBULANCE SERVICE
LADY ASSISTANT

Day Phone 340 - Night Phone 415
STATESBORO ✓ GEORGIA

**BRANNEN-THAYER
MONUMENT CO.**

"Monuments of Quality"



STATESBORO ✓ GEORGIA

Compliments of



PURITAN CHEMICAL CO.

COMMENCEMENT INVITATIONS

Reception and Visiting Cards, Monogrammed
Stationery, Dance Programs, Diplomas

Fraternity and Class Stationery

Invitations and Announcements Correctly and
Promptly Engraved. Send for Our Samples
and Prices.

J. P. Stevens Engraving Co.

103 Peachtree Street Atlanta, Ga.

"Quality Without Extravagance"

Walker Furniture Company

H. G. WALKER, President

The Home Furnishers

Phone 33

STATESBORO ✓ GEORGIA

You Will Always Find ✓ ✓ ✓

**HOLSUM BREAD
and CAKES**

STRICTLY FRESH

at

YOUR GROCERS

*The Largest Equipment and Fixture
House in the South*

The Straus Company, Inc.

1004 E. Cary Street, Richmond, Virginia

HOTEL - RESTAURANT - INSTITUTIONAL
EQUIPMENT

STOVE FIXTURES - SODA FOUNTAINS
CHINA - GLASS - SILVER

Charles E. Straus, Jr., President

Teachers ✓ ✓ ✓

WE SOLICIT YOUR PATRONAGE

We Carry a Complete Line of First
Quality Merchandise

And Extend a Cordial Welcome To Visit
Our Store

United 5c to \$5.00 Store

STATESBORO ✓ GEORGIA

1 9 2 0

1 9 3 6



“Sensible Service”



ALFRED DORMAN CO.

WHOLESALE GROCERS

STATESBORO - SYLVANIA - JESUP - SWAINSBORO

1 9 2 0

1 9 3 6

MORGANS, INC.

111 West Broad St.

SAVANNAH



HARDWARE ✓ MILL SUPPLIES

PAINTS ✓ OILS ✓ VARNISH

WAGONS ✓ FARM IMPLEMENTS

PUMPS ✓ ENGINES ✓ PIPE

Compliments of ✓ ✓

SANCKEN'S ICE CREAM
COMPANY



AUGUSTA ✓ GEORGIA

THE SOUTH GEORGIA
TEACHERS COLLEGE

USFS



MONARCH

Finer Foods

OLLIFF & SMITH

GOOD THINGS TO EAT
SINCE 1893



SCHOOL BOOKS
and
SCHOOL SUPPLIES



SEEDS FOR THE GARDEN
Poultry Feed ✓ Poultry Supplies

STATESBORO ✓ GEORGIA

COMPLIMENTS
OF
Statesboro Chamber
of Commerce

C. B. McALLISTER, *President*

FRANK SMITH, *Second Vice-President*

HARRY W. SMITH, *First Vice-President*

LEO. G. TEMPLES, *Third Vice-President*

J. H. BRETT, *Secretary-Treasurer*

COMPLIMENTS
OF
STATE and NEW
THEATRES

Averitt Brothers Auto
Company



SALES SERVICE

STATESBORO, GEORGIA

*Compliments
of*

THE CAMPUS STORE



CANDY

ICE CREAM

DRINK



In Printing

THERE ARE MANY REASONS WHY
SUCCESSFUL ANNUALS REQUIRE
THE SERVICES OF EXPERIENCED
AND EXPERT CRAFTSMEN

FOOTE & DAVIES CO.

HAVE THESE SERVICES . . . *and*
the most necessary components of
all really fine books including
A SPECIAL ANNUAL SALES
AND SERVICE ORGANIZATION
CREATIVE DESIGNERS AND
LAYOUT ARTISTS • ABUNDANT
EQUIPMENT . . . MODERN AND
COMPLETE • PRICES REPRESENTING
MAXIMUM IN VALUE



ATLANTA
GEORGIA

RESERVE

LH

1

.G43

R4

1936

ZACH S. HENDERSON LIBRARY



0 2001 0488986 6

DEMCO



