

Reflector

1935

Georgia Southern University

Follow this and additional works at: <https://digitalcommons.georgiasouthern.edu/reflector-yearbook>



Part of the [Higher Education Commons](#)

Recommended Citation

Georgia Southern University, "Reflector" (1935). *Reflector Yearbook*. 8.
<https://digitalcommons.georgiasouthern.edu/reflector-yearbook/8>

This book is brought to you for free and open access by the Student Media at Digital Commons@Georgia Southern. It has been accepted for inclusion in Reflector Yearbook by an authorized administrator of Digital Commons@Georgia Southern. For more information, please contact digitalcommons@georgiasouthern.edu.



REFLECTOR

1935



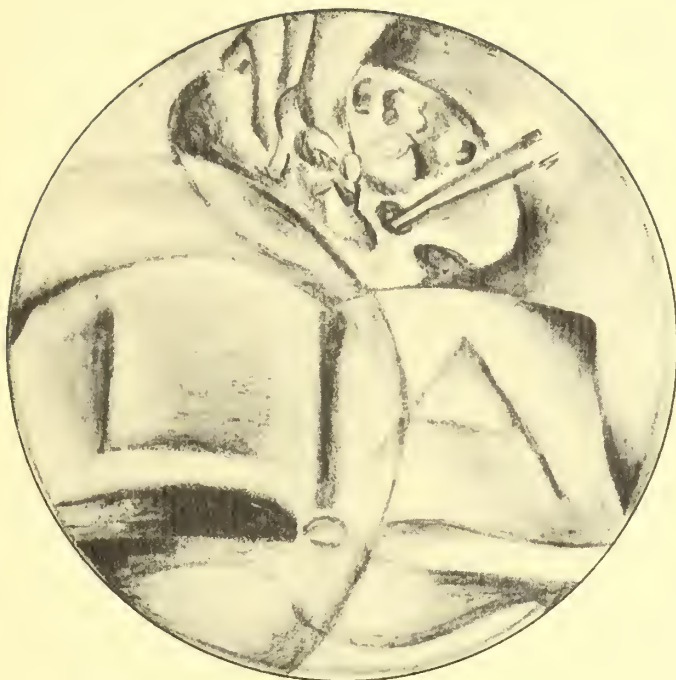




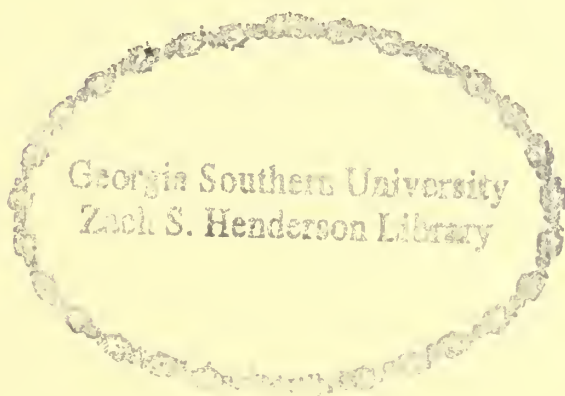


Digitized by the Internet Archive
in 2014

<https://archive.org/details/reflector1935na>

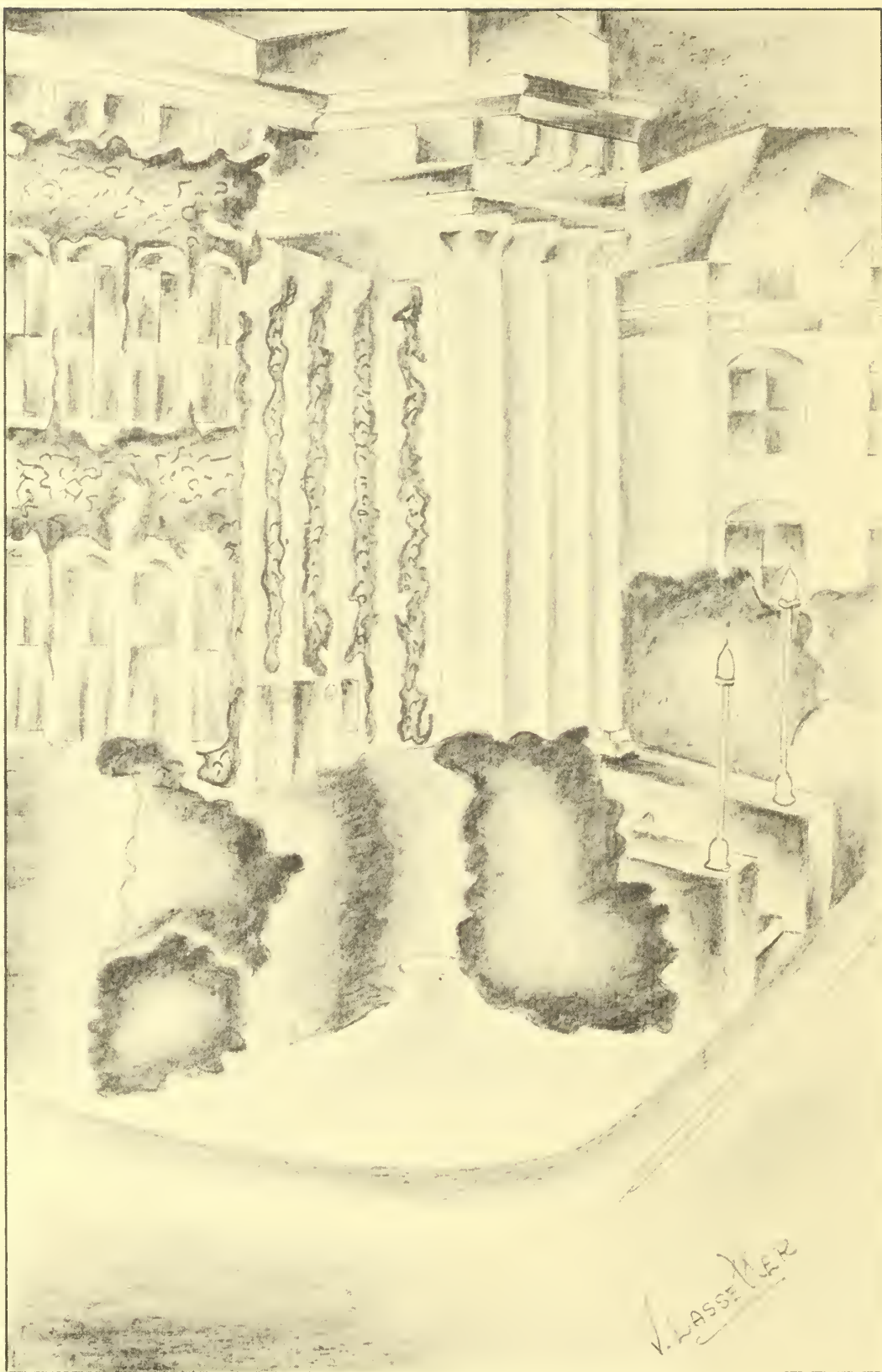


EX LIBRIS

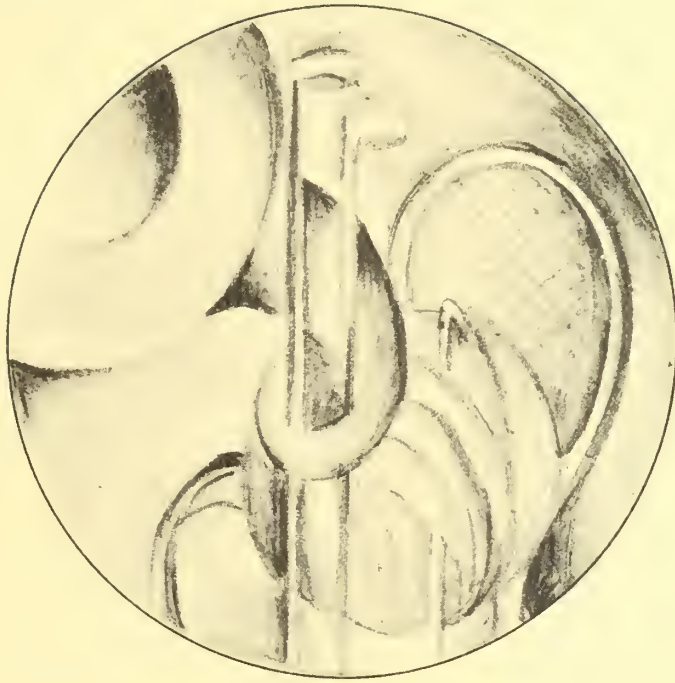


REFLECTOR
1935

LEONARD KENT, Editor



V. ASSEMER



THE REFLECTOR

1935

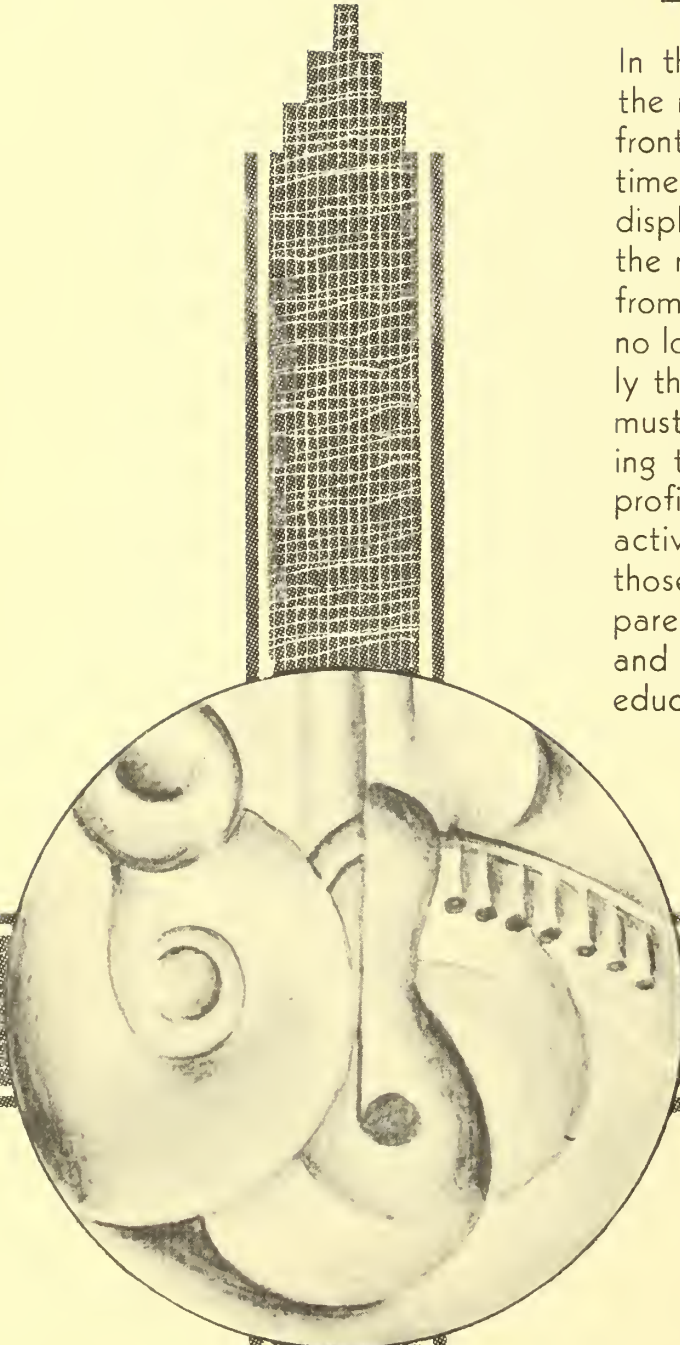


Published by the
SENIOR CLASS OF THE SOUTH GEORGIA TEACHERS
COLLEGE

Collegeboro, Georgia

THEME EXPLANATION *and* DEDICATION

In this age of the industrialist and the machine, man finds himself confronted with a vast amount of leisure time. The toils of man have been displaced by the wheels of industry; the machine has lifted the drudgery from his shoulders. Education can no longer have for its purpose merely the assimilation of knowledge. It must have the broader task of teaching the individual how to use most profitably that time not spent in the active pursuit of a livelihood. To those who are endeavoring to prepare themselves for a useful, happy, and meaningful life through leisure education, this book is dedicated.



CONTENTS

I. THE COLLEGE

Faculty

II. CLASSES

Seniors

Juniors

Sophomores

Freshmen

III. ACTIVITIES

Organizations

Social Clubs

IV. ATHLETICS

V. FEATURES

VI. ADVERTISEMENTS



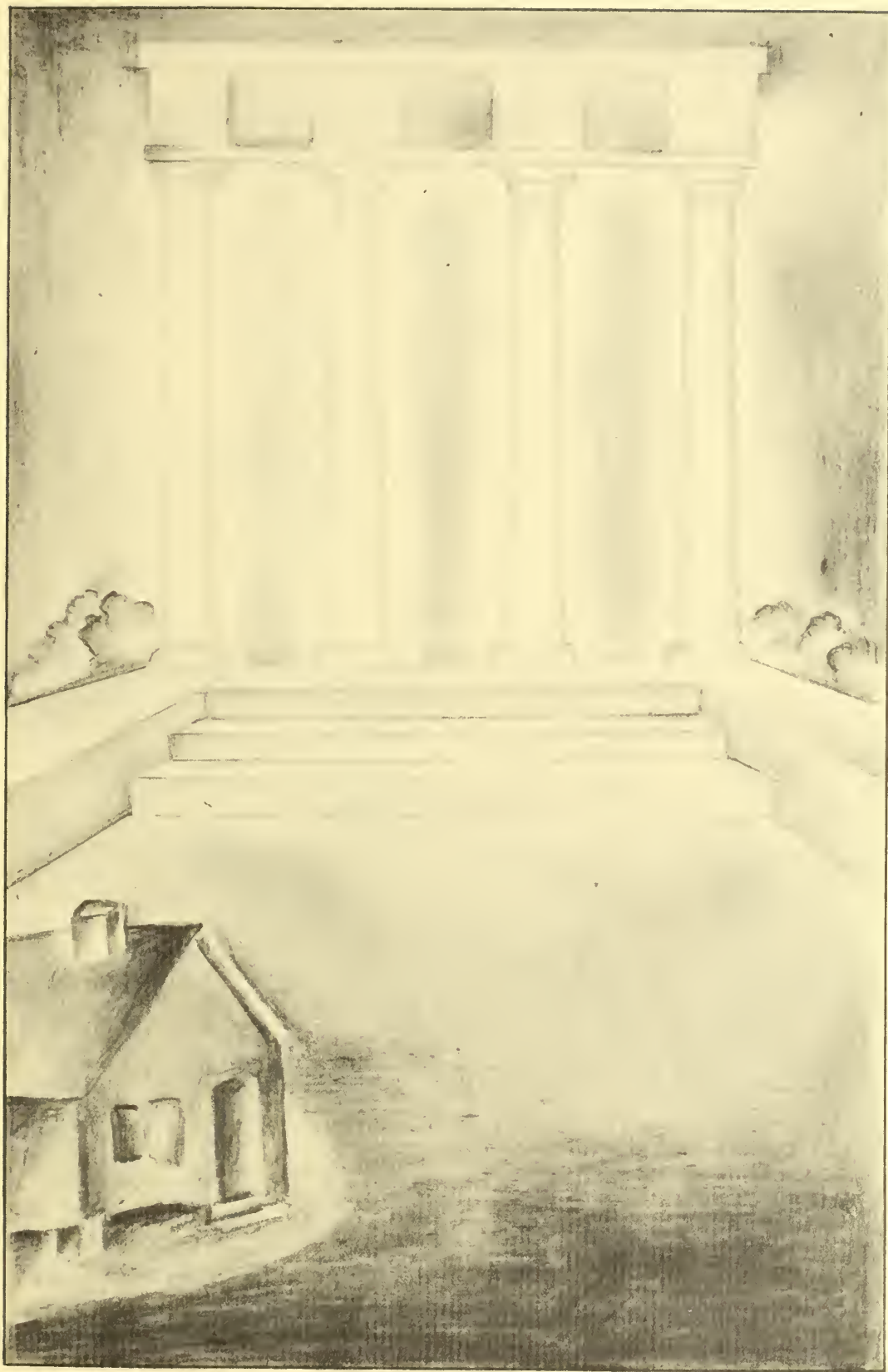
ALMA MATER

*Down among the murmuring pine trees,
Where old Nature smiles,
Old T. C. holds up a standard
Known for miles and miles.*

Chorus

*Lift the chorus. Speed it onward,
Ne'er her standard fail,
Hail to thee our Alma Mater,
Hail T. C. All Hail.*

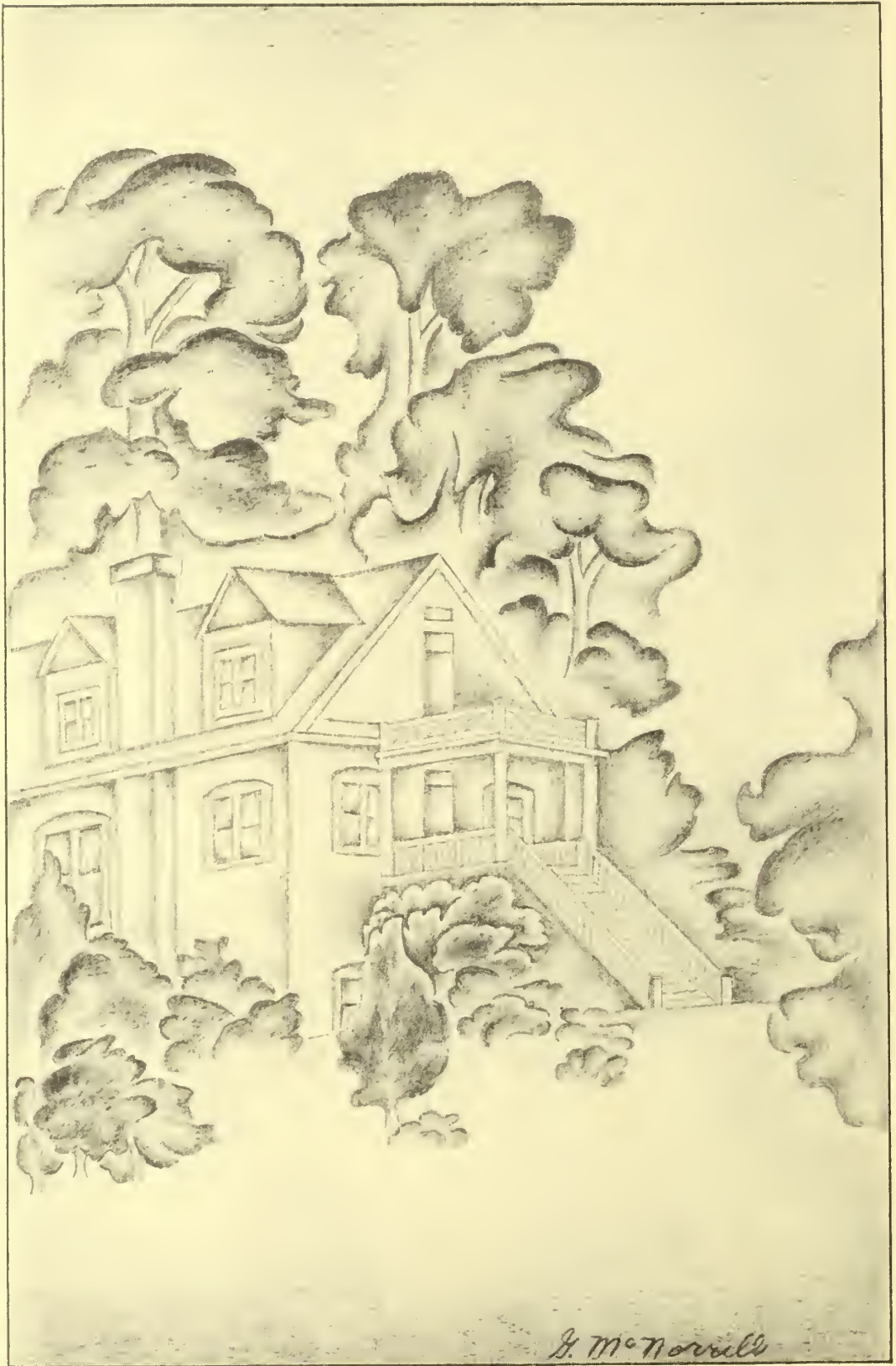
*From the blue and broad Atlantic,
Balmy breezes blow,
Wafting far old T. C.'s spirit
May she ever grow.*

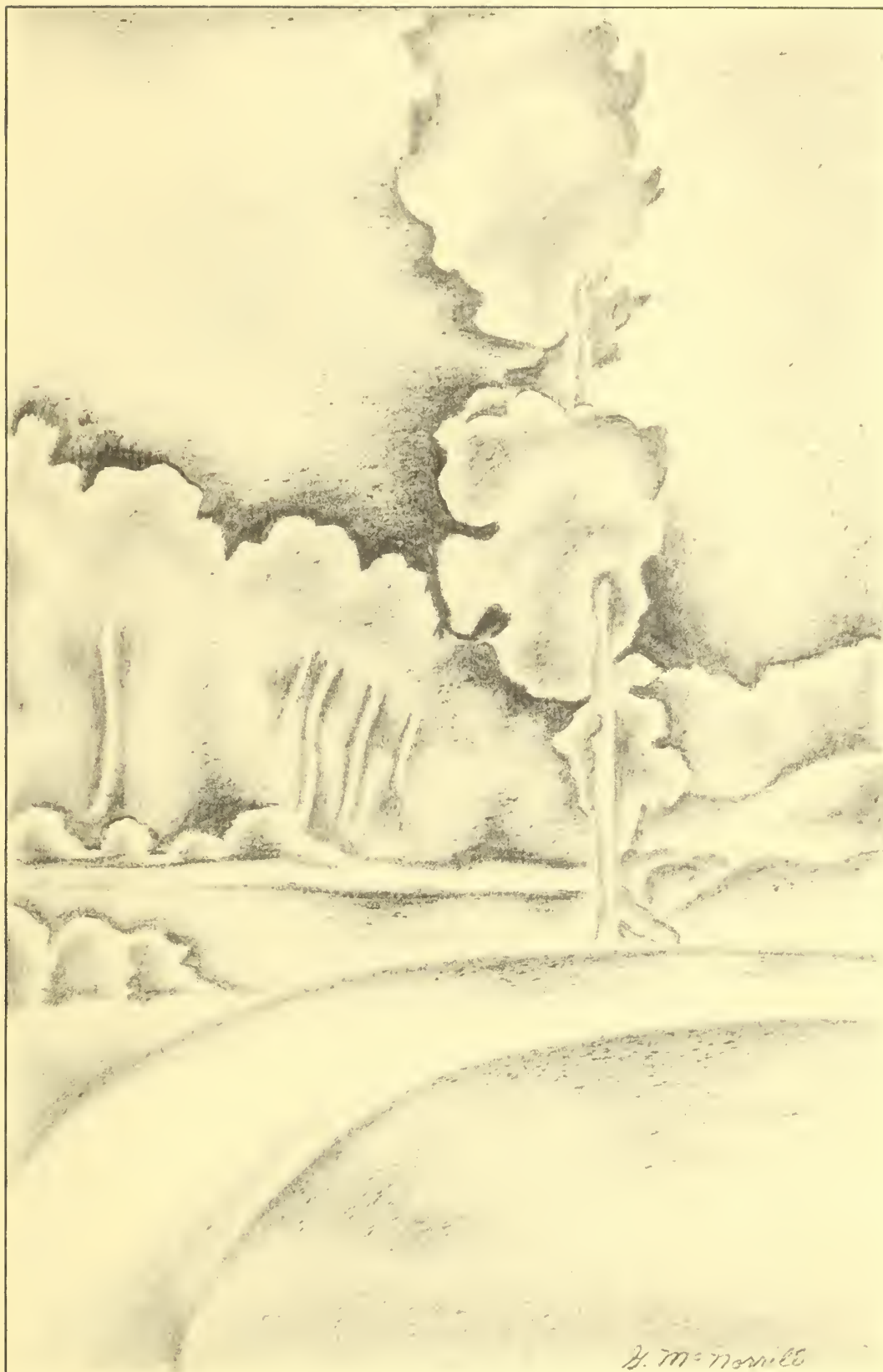


C O L L E G E













F A C U L T Y



MARVIN SUMNERS PITTMAN, A.B., M.A., PH.D.

President

A MESSAGE FROM THE PRESIDENT

LIFE is composed of many elements. Each must exist in the right ratio in order that life may be well rounded. Every one should be prepared to work efficiently in order that he may earn his livelihood. He should be able to play with equal efficiency in order to enjoy life. Play does not consist of unoccupied and misspent time but in time properly capitalized in helpful recreation.

In a machine age, such as that of which we are now a part, one of the greatest services that the teacher can render is to equip the student with interests, ideals, and arts which will keep him profitably employed during his leisure hours.

I wish to commend the editors of the REFLECTOR for their efforts to magnify the importance of and the means by which the leisure arts may be used to enrich life. Emphasis of this idea is timely and it may prove to be not only a reflector of our college life for the current year, but we trust it may prove to be a contribution to society in general.



FILDLING RUSSELL, A.B., M.A.
Dean of Men



MAMIE VLAZEZY, A.B.
Dean of Women

THE DEAN'S MESSAGE

TO THE Students of 1934-35:

I am glad of the opportunity of having a letter concerning the leisure arts in the REFLECTOR. The authorities of the College have been pleased with the results of the Leisure Arts Program. We think it was a fine thing for the REFLECTOR Staff to use it as their theme for the yearbook.

With an increase in scientific inventions and the possibility of a stationary population, we can expect more leisure for each individual. The program as planned for the year tried to offer as many different activities as possible with the hope that each student would become interested in some new activity.

Surely, everyone who has taken advantage of these opportunities will find life more pleasant; and it is my wish that each year you will enrich your life with something new.

DEAN HENDERSON

FACULTY



First Row: SMALL, MICHAEL, ROBERTS, CARRUTH

Second Row: SINGLEY, DOWNS, BRACEY

Third Row: GIRDINI, GROOVER, WOOD, DONOVAN

MARY SMALL, A.B., M.A.	Art
MAL MICHAEL	Commercial Subjects, Secretary to the President
TALMADGE ROBERTS, A.B.	Commercial Subjects
JOSEPH E. CARRUTH, A.B., M.A., PH.D.	Head of Education Department
ALVIN A. SINGLEY, A.B., M.A.	Education
WALTER L. DOWNS, A.B., M.A.	Director of the Training School
NELL BRACEY, A.B., M.A.	Critic Teacher
CORINNE GARDINE, B.S., M.A.	Critic Teacher
MARION GROOVER, A.B.	Critic Teacher
MARIE WOOD, B.S., M.A.	Critic Teacher
ELIZABETH DONOVAN, B.S.	G. E. B. Supervisor

FACULTY



First Row: FRANSETH, BUTTRILL, DONALDSON, RUSSELL

Second Row: BOLTON, SMITH, RAY

Third Row: LANE, HENDERSON, PERRY, BARNES

JANE FRANSETH, A.B.	G. E. B. Supervisor
MRS. CARRIE C. BUTTRILL, B.S., M.A.	Head of English Department
ROBERT F. DONALDSON, A.B., M.A.	English
FIELDING D. RUSSELL, A.B., M.A.	Dean of Men and English
RUTH BOLTON, B.S., M.A.	Home Economics
CHARLES W. SMITH, A.B., M.A., Ph.D.	Romance Languages
ELEANOR RAY, A.B., B.L.S.	Librarian
ZULIEME LANE, B.S., M.A.	Assistant Librarian
ZACH S. HENDERSON, B.S., M.A.	Dean and Mathematics
VIOLA PERRY, B.S., M.A.	Registrar and Mathematics
MRS. ESTHER WILBURN BARNES, B.S.	Music

FACULTY



First Row: DEAL, SMITH, LANI, HANNER

Second Row: TRUSSELL, DESTLER, NEWTON

Third Row: DeLoach, Westcott, Landrum, Winburn

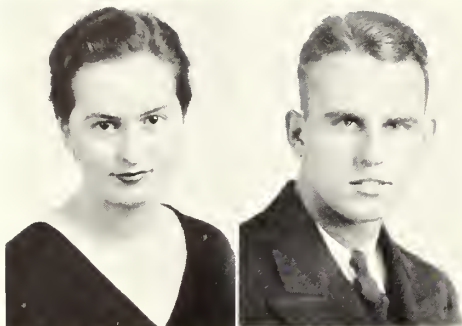
WILLIAM DEAL, A.B.	<i>Director of the Band and Orchestra</i>
BYRON L. SMITH, B.S., M.A.	<i>Coach and Physical Education</i>
CARO LANI, A.B., M.A.	<i>Physical Education and Health</i>
WILLIAM S. HANNER, A.B., M.A.	<i>Chemistry and Physics</i>
MALVINA TRUSSELL, B.S., M.S.	<i>Biology</i>
CHIESTER McARTHUR DESTLER, A.B., M.A., PH.D.	<i>Head of Social Science Department</i>
HESTER NEWTON, B.S., A.B., M.A.	<i>History and Social Science</i>
R. J. H. DeLoach, A.B., M.A.	<i>Sociology and Economics</i>
JAY B. WESTCOTT, A.B., M.A.	<i>Social Science</i>
MRS. P. D. LANDRUM	<i>Director of Dining Hall</i>
ROBERT L. WINBURN	<i>Bookkeeper</i>



C L A S S E S



S E N I O R S



SENIORS

HELEN OLLIFF
President

CHARLES MUNCH
Vice-President



LOUISE QUANTOCK
Secretary

MARY MARGARET BLITCH
Treasurer

HELEN OLLIFF
Statesboro, Georgia
English

Wesleyan, 1; Day Student Representative on House Council, 2, 3; W. A. A. Council; President W. A. A. Council, 3; Publicity Chairman, 4; *George Anne* Staff, 3; May Queen, 3; Iota Pi Nu Sponsor, 3; Student Council, 4; President Senior Class, 4; Business Manager of REFLECTOR, 4.

LOUISE QUANTOCK
Oliver, Georgia
English

Dux Domina; President Dux Domina, 4; Flora Macdonald College, '30-'31; House Council, 3; Secretary of Student Council, 4; Class Secretary, 3, 4; Exchange Editor of *George Anne*, 3, 4; REFLECTOR Staff, 4; Business Manager of Handbook, 3; Stephens Literary Society; May Court, 3; Most Beautiful Girl, 2, 3.

CHARLES MUNCH
Jensen, Florida
History

Iota Pi Nu; Bachelors Club, 2, 3, 4; Vice-President Iota Pi Nu, 3, 4; Oglethorpe Literary Society; President Oglethorpe Literary Society, 3; Glee Club, 3, 4; President Glee Club, 3; Science Club; REFLECTOR Staff, 4; Football, 1, 2, 3, 4; Tennis Team, 3, 4.

MARY MARGARET BLITCH
Statesboro, Georgia
English and French

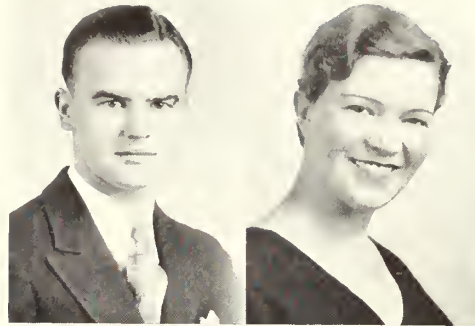
W. A. A. Council; Vice-President W. A. A. Council, 3, 4; Business Manager of *George Anne*, 4; Class Treasurer, 4; May Court, 3; International Relations Club, 4; President French Club, 1; Associate Editor of REFLECTOR, 4.

SENIORS

EDGAR WARE

Student Council Representative

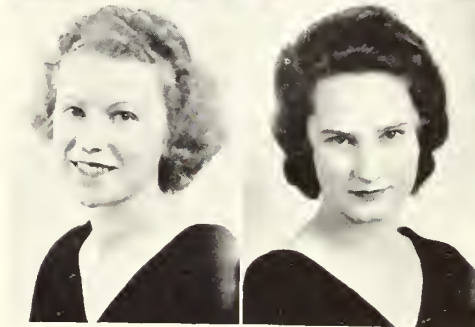
IRIS ROBERTS

Student Council Representative

EVELYN MATHEWS

Student Council Representative

LUCILE ANDERSON



EDGAR WARE

Benevolence, Georgia

Science

Iota Pi Nu; Bachelors Club; Norman Junior College, 1, 2; Vice-President Student Council, 4; Math Club, 3, 4; Science Club, 3, 4; Y. M. C. A.; Monitor, 4; International Relations Club, 4.

IRIS ROBERTS

Blakely, Georgia

English

Senior Representative Student Council, 4; Y. W. C. A. Cabinet, 4; French Club, 4.

EVELYN MATHEWS

Statesboro, Georgia

English

Wesleyan College, 1; Senior Representative Student Council, 4; Glee Club, 3; International Relations Club, 4; Iota Pi Nu Sponsor, 4; May Court, 3.

LUCILE ANDERSON

Statesboro, Georgia

English

Band, 4; Science Club; Day Student Representative to General Assembly of Student Government, 4; Art Editor of REFLECTOR, 4; Glee Club, 2.



SENIORS

BONNIE LOU AYCOCK

TORRANCE BRADY

ELMER CARLYLE BREWTON

INEZ BREWTON

BONNIE LOU AYCOCK

Brooklet, Georgia

English

Y. W. C. A.; Stephens Literary Society; Stephens Debating Team, 1, 2; French Club, 3; Dramatic Club, 2; Glee Club, 1, 2.

✓

✓

ELMER CARLYLE BREWTON

Groveland, Georgia

Mathematics

Y. M. C. A.; Oglethorpe Literary Society; Chaplain Oglethorpe Literary Society, 4; Math Club; Social Science Club, 3; College 4-H Club, 3, 4; Science Club, 4; General Assembly of Student Government, 4.

TORRANCE BRADY

Savannah, Georgia

Home Economics

D. L. D.; President D. L. D., 2, 4; Dramatic Club, 4; Orchestra, 1, 2, 3, 4; Oglethorpe Literary Society; W. A. A. Council, 2, 3, 4; Y. W. C. A.; Violin Medal, 1, 2.

✓

✓

✓

INEZ BREWTON

Groveland, Georgia

English

Y. W. C. A.; Stephens Literary Society; Home Economics Club, 4; Vice-President College 4-H Club, 4.

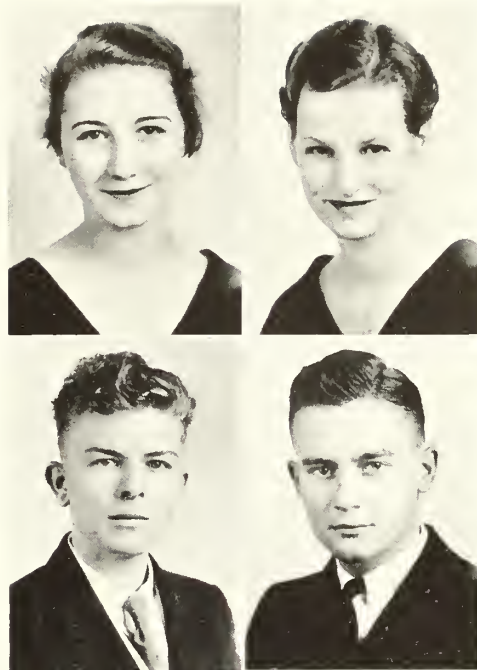
SENIORS

ALMA ELIZABETH CONE

VICTORIA CONE

LELAND COX, JR.

ALBERT M. DEAL



ALMA ELIZABETH CONE

Statesboro, Georgia

English and French

Day Student; International Relations Club, 4.

✓

✓

✓

LELAND COX, JR.

Stillmore, Georgia

English and Social Science

Y. M. C. A.; Pianist Stephens Literary Society, 3; Math Club; Science Club; Dramatic Club, 4; Orchestra, 4; Glee Club, 4; Piano Medal, 2, 3; Piano Certificate, 3; Scholarship to Atlanta Conservatory, Summer 3, 4.

VICTORIA CONE

Stilson, Georgia

History

L. T. C.; President W. A. A. Council, 4; Science Club; Vice-President Science Club, 4; Secretary Stephens Literary Society, 4; Math Club; REFLECTOR Staff, 4; Basket-ball, 2, 3, 4; Y. W. C. A.; House President, 4.

✓

✓

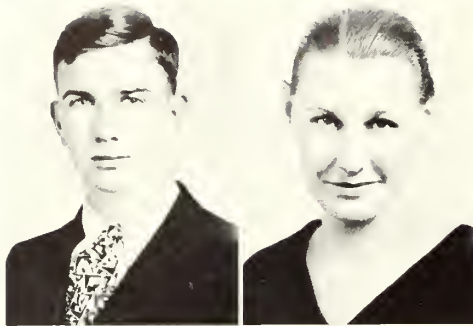
✓

ALBERT M. DEAL

Statesboro, Georgia

Science

Delta Sigma; Treasurer Delta Sigma, 4; Band, 3, 4; REFLECTOR Staff, 4; Stephens Literary Society; Boxing, 3, 4; "T" Club.



SAMUEL DUNBAR DUNCAN, JR.

VIRGINIA EDENFIELD



HELEN ENICKS

JEWEL GREENE

SAMUEL DUNBAR DUNCAN, JR.

Millhaven, Georgia

English

Bachelors Club; Stephens Literary Society; Y. M. C. A.; Secretary-Treasurer Y. M. C. A., 4; Dramatic Club, Treasurer, 4; Certificate in Piano, 4; Glee Club, 4; Band, 4.

✓

✓

✓

HELEN ENICKS

Rocky Ford, Georgia

History

Oglethorpe Literary Society; Glee Club, 1, 2, 3, 4; Piano Certificate, 3; Science Club; Orchestra, 2, 3.

VIRGINIA EDENFIELD

Savannah, Georgia

Science

D. L. D.; Y. W. C. A.; Science Club; Oglethorpe Literary Society; W. A. A. Council, 1, 2.

✓

✓

JEWEL GREENE

Douglasville, Georgia

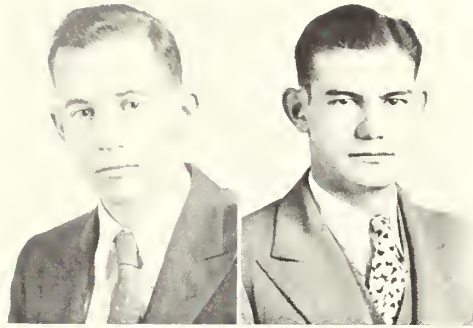
History

Piedmont College, 1; Y. W. C. A.; President Y. W. C. A., 3; Cabinet, 4; Treasurer Stephens Literary Society, 2; W. A. A. Council, 2, 3, 4; May Court, 3; President Home Economics Club, 4; Science Club; Student Council, 4; REFLECTOR Staff, 4.

SENIORS

WILLIAM CLIFFORD GROOVER

CHASON HARRISON



FRANCES HERRINGTON

SOPHIE JOHNSON



WILLIAM CLIFFORD GROOVER

Stilson, Georgia

History

Norman Junior College, 1, 2; International Relations Club, 4.

✓

✓

✓

✓

CHASON HARRISON

Calvary, Georgia

History

Oglethorpe Literary Society, 4; Dramatic Club, 4; Band, 4; Orchestra, 4.

✓

✓

✓

✓

FRANCES HERRINGTON

Millhaven, Georgia

History

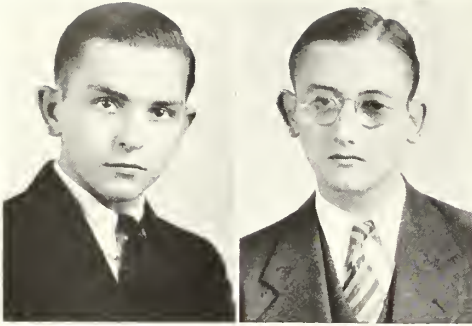
D. L. D.; Stephens Literary Society; Y. W. C. A.; Science Club; Dramatic Club, 4; Home Economics Club, 1, 2, 3, 4.

SOPHIE JOHNSON

Wadley, Georgia

English

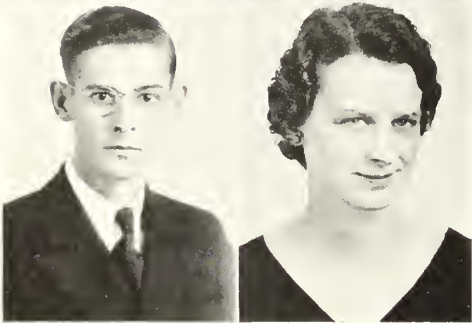
Faculty Member, 3, 4; House Mother of West Dormitory.



SENIORS

LEONARD KENT

LAMAR LAYTON



RUFUS MCDUFFIE

HASSIE MAUDE MCELVEEN

LEONARD KENT

Summit, Georgia

Mathematics and French

Iota Pi Nu; Secretary Iota Pi Nu, 4; President Bachelors Club, 4; Editor-in-Chief REFLECTOR, 4; Editor of *George Anne*, 3; Associate Editor *George Anne*, 2; Associate Editor Student Handbook, 3; Vice-President Student Council, 3; Representative Student Council, 1, 2; President Stephens Literary Society, 3; Stephens Debater, 1; Vice-President State Y. M. C. A. Cabinet, 3; Y. M. C. A. Cabinet, 1, 2; Voted Most Intellectual Student, 3; Deputation Team, 1, 2, 3, 4; President French Club, 2; Math Club.

RUFUS MCDUFFIE

McRae, Georgia

Mathematics

Bachelors Club; Secretary Bachelors Club, 4; Vice-President Stephens Literary Society, 4; Vice-President Y. M. C. A., 4; Secretary Math Club, 3, President, 4; International Relations Club, 4.

LAMAR LAYTON

Midville, Georgia

English

Day Student.

HASSIE MAUDE MCELVEEN

Brooklet, Georgia

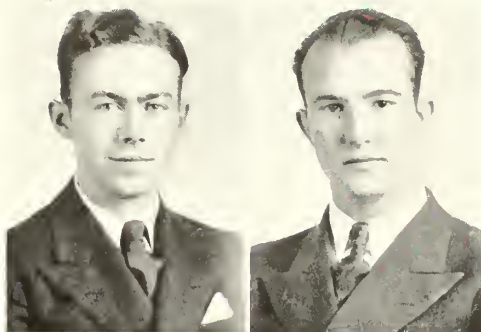
Mathematics

President Y. W. C. A., 4, Vice-President, 3, Treasurer, 2; President Math Club, 3; Stephens Winner of Scholarship Award, 4; Secretary Stephens Literary Society, 2; House Council, 4; REFLECTOR Staff, 2, 4; May Court, 2; Science Club, 1, 2, 3, 4; Secretary General Assembly of Student Government, 4.

SENIORS

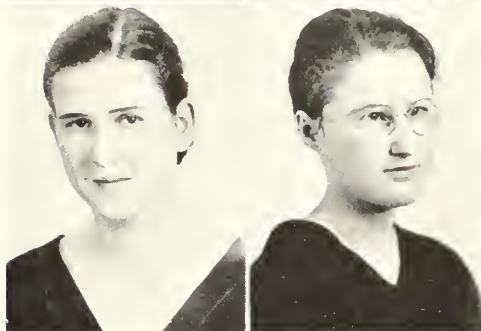
GORDON MAYS, JR.

SHIELBY MONROE



MARGARET GRAHAM MOORE

MARY JANE MOORE

GORDON MAYS, JR.
Statesboro, Georgia*English*

Delta Sigma; REFLECTOR Staff, 4; Day Student.

✓

✓

✓

✓

MARGARET GRAHAM MOORE
Statesboro, Georgia*History*

Oglethorpe Literary Society; Home Economics Club, 2, 3, 4; Y. W. C. A.; International Relations Club, 4; Day Student.

SHIELBY MONROE
Savannah, Georgia*History*

Iota Pi Nu; President Iota Pi Nu, 3; Bachelors Club; Band Leader, 2; Band, 4; Orchestra, 1, 2, 3, 4; Science Club.

✓

✓

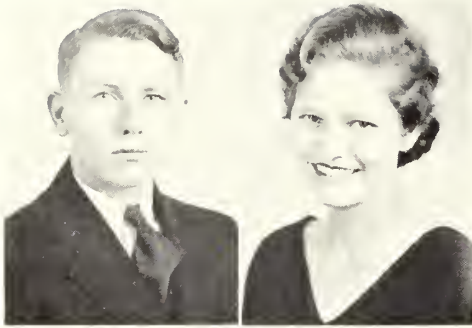
✓

✓

✓

MARY JANE MOORE
Statesboro, Georgia*History*

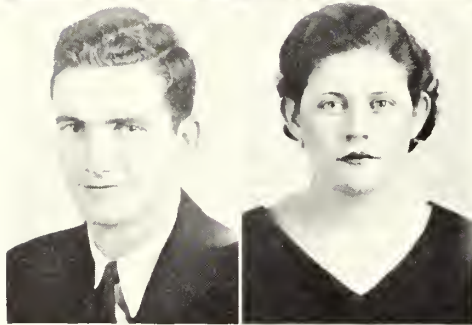
Day Student.



SENIORS

HORACE ODOM

MARGARET OWENS



AUBREY PAFFORD

NINA PYE

HORACE ODOM

Girard, Georgia

History

Day Student.

✓

✓

✓

AUBREY PAFFORD

Douglas, Georgia

History

Iota Pi Nu; President Iota Pi Nu, 4; Bachelors Club; President Stephens Literary Society, 2; Vice-President Y. M. C. A., 2; President Sophomore Class, 2; REFLECTOR Staff, 2; Basket-ball Team, 1, 2, 3, 4.

MARGARET OWENS

Midville, Georgia

English

Epicurean; Secretary-Treasurer Epicurean, 4; Math Club; French Club; May Court, 3.

✓

✓

✓

NINA PYE

Sylvania, Georgia

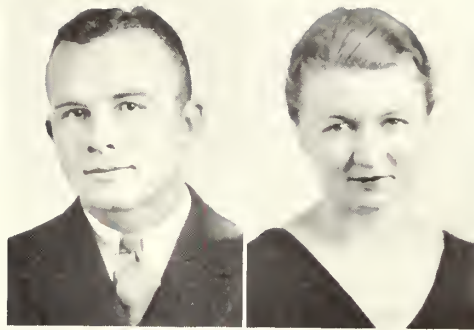
History

Y. W. C. A. Cabinet, 2, 3; W. A. A. Council, 3, 4; Science Club; Dramatic Club, 1, 2, 3; Stephens Literary Society; Y. W. A., 3.

SENIORS

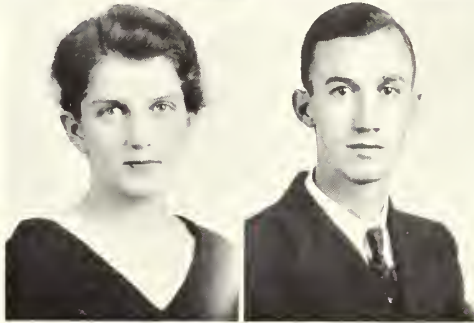
FRANK QUATTLEBAUM

MABLE ROCKER



VIRGINIA WILSON RUSSELL

HERSCHEL SESSIONS



FRANK QUATTLEBAUM

Pavo, Georgia

Science

Norman Junior College, 1; Delta Sigma; President Delta Sigma, 4; Science Club, 3, 4; Stephens Literary Society; REFLECTOR Staff, 4; Football, 2, 3, 4; "T" Club, 4.

✓

✓

✓

VIRGINIA WILSON RUSSELL

Collegeboro, Georgia

Science

University of Georgia, 1, 2; Vice-President Home Economics Club, 4; Y. W. C. A. Sponsor, 4; Dux Domina Sponsor, 4.

MABLE ROCKER

Crawfordville, Georgia

Science

D. L. D.; Home Economics Club, 4; Science Club, 3, 4; Y. W. C. A.; Stephens Literary Society; W. A. A. Council, 3; House Council, 1.

✓

✓

✓

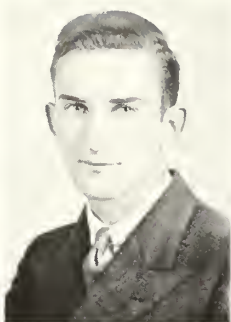
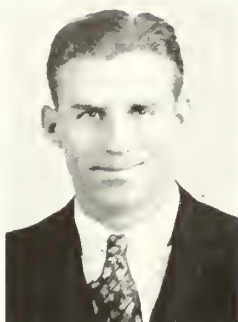
HERSCHEL SESSIONS

Sylvester, Georgia

Mathematics

Georgia State College for Men, 1, 2; Oglethorpe Literary Society; Y. M. C. A.; Math Club, 3, 4; 4-H Club, 3; Secretary-Treasurer Social Science Club, 3.

SENIORS



MARVIN SMITH

SIDNEY STAPLETON

JIM WRINKLE



LOLA WYATT

ROBERT WYNN

KATHRYN YEOMANS

MARVIN SMITH

Carnegie, Georgia

History

Bachelors Club; Math Club; Y. M. C. A.; Football, 3, 4; Boxing Team, 3, 4; "T" Club, 4.

JIM WRINKLE

Dalton, Georgia

English

Bachelors Club; Secretary Bachelors Club, 3; House Council President, 4; President Stephens Literary Society, 3, Vice-President, 2; Vice-President of Class, 2, 3; President Science Club, 3; Vice-President Y. M. C. A., 2, Secretary, 3; Deputation Team, 2; Sports Editor *George Anne*, 2, 3, 4; Sports Editor *REFLECTOR*, 4; Basketball, 2, 3, 4; Football, 3; Student Council Representative, 2.

ROBERT WYNN

Portal, Georgia

English

Day Student.

SIDNEY STAPLETON

Weston, Georgia

History

Iota Pi Nu; Treasurer Iota Pi Nu, 3; Bachelors Club; President Stephens Literary Society, 3; Y. M. C. A.

LOLA WYATT

Brooklet, Georgia

English

Transfer from G. S. C. W. and University of Georgia; Day Student.

KATHRYN YEOMANS

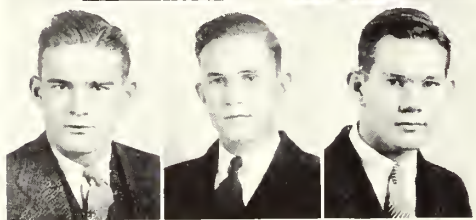
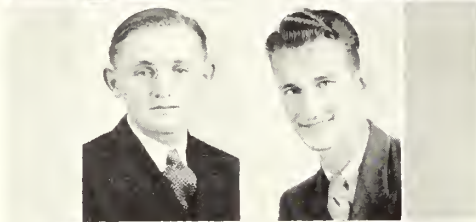
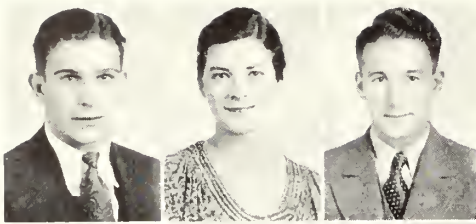
Vidalia, Georgia

English

D. L. D.; President D. L. D., 3; Secretary Stephens Literary Society, 3; Secretary and Treasurer W. A. A. Council, 3, 4; Vice-President Junior Class, 3; Science Club; International Relations Club; Home Economics Club; Y. W. C. A.



J U N I O R S



JUNIORS

BILL STEWART
President

EDNA BENNETT
Secretary

HOBSON DUBOSE
Treasurer

ALTON ELLIS
Student Council Representative

GEORGE DONALDSON
Student Council Representative

COHEN ANDERSON

ELTON ANDERSON

BILL BIDGOOD

BILL STEWART, <i>Bachelors Club</i>	Dixie, Georgia
EDNA BENNETT	Jesup, Georgia
HOBSON DUBOSE, <i>Iota Pi Nu</i>	Blakely, Georgia
ALTON ELLIS, <i>Bachelors Club</i>	Griffin, Georgia
GEORGE DONALDSON	Claxton, Georgia
COHEN ANDERSON, <i>Delta Sigma</i>	Atlanta, Georgia
ELTON ANDERSON	Glennville, Georgia
BILL BIDGOOD	Dublin, Georgia

JUNIORS

BLUE

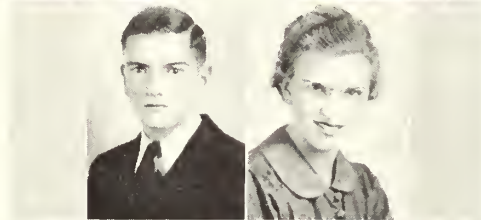
BOSWELL

BRANNEN



BRIDGES

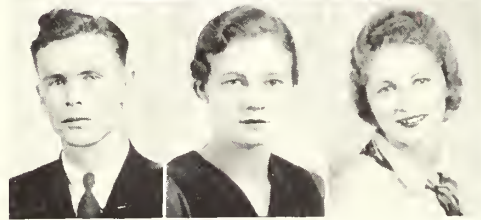
CAIN



J. D. CHERRY

EVELYN CHERRY

CLIFTON



EDWIN MARK BLUE Pineview, Georgia

ANNIE LAURA BOSWELL Crawfordville, Georgia

CECILE BRANNEN Statesboro, Georgia

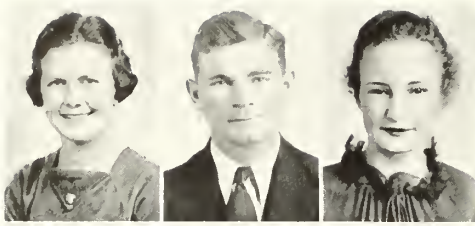
JOHN BRIDGES Unadilla, Georgia

MATTIE CAIN Millhaven, Georgia

J. D. CHERRY Bainbridge, Georgia

EVELYN CHERRY, D. L. D. Bainbridge, Georgia

AUDREY CLIFTON Stilson, Georgia



JUNIORS

CODY

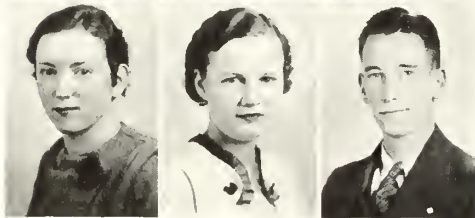
DAVIS

DEKLE



DELOACH

DURDEN



DURRENCE

ELLIS

ESPY

MAYO CODY, *D. L. D.* Savannah, Georgia

EUGENE C. DAVIS Screven, Georgia

NINA DEKLE Register, Georgia

NEWELL DELOACH, *Dux Domina* Savannah, Georgia

DOUGLAS DURDEN Columbus, Georgia

JANIE DURRENCE Claxton, Georgia

LILY ELLIS Jesup, Georgia

ROBERT W. ESPY, *Delta Sigma* Milledgeville, Georgia

JUNIORS

FRAZIER

GRAHAM

GROOVER



HAGIN

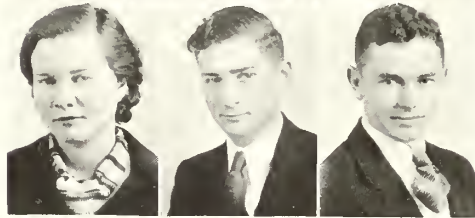
HENDERSON



HERRINGTON

HINELY

JONES



LILBURN L. FRAZIER Statesboro, Georgia

ELOISE GRAHAM, *Epicurean* Savannah, Georgia

WILMA GROOVER Statesboro, Georgia

IDA MAE HAGIN Statesboro, Georgia

SARAH HENDERSON Weston, Georgia

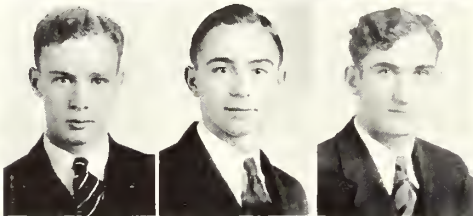
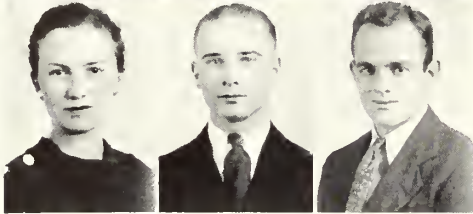
MARY VIRGINIA HERRINGTON Sardis, Georgia

EUGENE HINELY Marlow, Georgia

JIM JONES Doerun, Georgia

REFLECTOR

1935



JUNIORS

KIRKLAND

LEE

MARTIN

HENRIETTA MOORE

WENDELL MOORI

PAINÉ

PURVIS

RAULERSON

REDDICK

TRAVIS KIRKLAND	Douglas, Georgia
EUNICE LEE	Statesboro, Georgia
HOWELL MARTIN, <i>Bachelors Club</i>	Patterson, Georgia
HENRIETTA MOORE	Statesboro, Georgia
JAMES WENDELL MOORT	Lyons, Georgia
CHARLES J. PAINE, <i>Delta Sigma</i>	Waycross, Georgia
J. D. PURVIS, <i>Bachelors Club</i>	Willacoochee, Georgia
DARIS E. RAULERSON	Rockingham, Georgia
MARVIN J. REDDICK	Sylvania, Georgia

JUNIORS

RIGGS

ROZIER

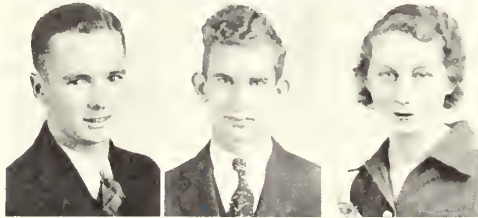
SCARBORO



SETTLE

THORNTON

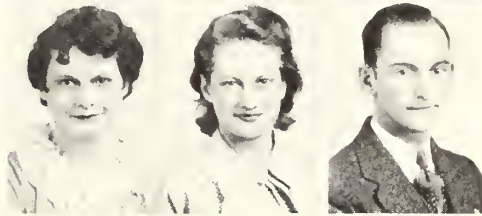
TOOLE



WHITE

WILSON

ZALUMAS



EARL RIGGS, <i>Delta Sigma</i>	Statesboro, Georgia
LOUISE ROZIER	Stilson, Georgia
SARA KATE SCARBORO	Garfield, Georgia
ALTON SETTLE, <i>Bachelors Club</i>	Waycross, Georgia
BLAKELY THORNTON	Pembroke, Georgia
MARJORIE TOOLE	Midville, Georgia
MAUDE WHITE	Statesboro, Georgia
ELWYN WILSON	Duluth, Georgia
HARRY ZALUMAS	Thomasville, Georgia

MERRILY WE ROLL ALONG

*"Summer recalling
At the turn of the year,
Fruit will be falling
September is here."*

- SEPTEMBER 24. Rats take campus like conquering heroes.
SEPTEMBER 25. Freshmen tested and found lacking.
SEPTEMBER 26. Miss Veazey tells Freshman girls for the first time that "the boys are what the girls make them."
SEPTEMBER 27. Upperclassmen arrive; Freshmen squelched.
SEPTEMBER 28. First football game played in Troy, Alabama. Ala. Teachers 19—S. G. T. C. 12.
SEPTEMBER 29. Enrollment passes 500 mark. Classes in full swing. Farewell to fun and frolic!

*"I shall take down the calendar
And from the rounded year
Blot out one name, October,
The loveliest and most dear!"*

- OCTOBER 1. First of a long series of chapels that run into the next period.
OCTOBER 3. Senator George speaks on New Deal.
OCTOBER 5. Annual brawl between T. C. and B. P. I. at Mount Vernon. Everybody took a punch at everyone else and a lovely time was had by all. Count, B. P. I. 6—T. C. 0.
OCTOBER 8. First issue of *George Anne* comes out with spicy "dirt colyum." Editor Ellis leaves for parts unknown.
OCTOBER 9. Editor returns; false alarm.
OCTOBER 12. Teachers entertain informally at home for Tampa University with a football game. Decision, Tampa 15—T. C. 22.
OCTOBER 13. Epicurean Reunion Dance. Demand for punch exceeds supply.
OCTOBER 19. Night game with Stetson at Deland, Florida. Score, Stetson 19—T. C. 0. "Bighearted" Smith in a moment of extravagance generously gives each and every member of the team one "nick" to buy his supper with. . . . White of him!
OCTOBER 26. T. C. goes "hill-billy" with Appalachian Teachers as guests. T. C. 22—A. T. 13. We win for a change.
OCTOBER 27. Bachelors Banquet in town. Kent gets a brain wave and distributes numbers to all the ladies. Just like Sing Sing.
OCTOBER 29. Dux Domina test old theory "the way to a man's heart, etc." with a waffle supper at Scott's.
OCTOBER 30. Four Capitals Motorcade stops by for punch. Faculty members smell peculiar odor, but conclude that it must be the gas they're burning.

*"Sad November, lady of rain
Sends the goose-wedge over again."*

- NOVEMBER 2. Cochran 0—T. C. 6. Could it be those uniforms?
NOVEMBER 4. L. T. C.'s throw dance in training school.
NOVEMBER 9. All is not lost. There's still hope for the team. Teachers take Douglas 19-0.
NOVEMBER 10. Iota Pi Nu's honor pledges with dance. Pitt asks Paff, "How's the punch?" Meaning—
NOVEMBER 11. Armistice exceedingly well celebrated.
NOVEMBER 16. Everybody tours over to Milledgeville to see G. M. C. swamp Teachers 19-0. Dr. and Mrs. Wells open the mansion to T. C. students.
NOVEMBER 24. T. C.'s Pan-Hellenics—Iota Pi Nu and Delta Sigma hire a hall and "go to town."
NOVEMBER 25. "Coonie" rates write-up in *Atlanta Journal* as outstanding center.
NOVEMBER 29. Home coming! Great day for T. C.! Sophs trampled under foot by fighting Freshmen in annual color rush. Teachers lose heartbreaking game to Newberry 21-20. Banquet followed. Everybody was here, and "a good time was had by all!"

*"Ah, distinctly I remember,
'Twas in the bleak December . . ."*

- DECEMBER 1. D. L. D.'s take over the training school for the evening.
DECEMBER 3. Mr. Russell makes smashing hit with students, when in his capacity of acting Dean and President, he fires the faculty. Chapel gets out early!
DECEMBER 7. Stephens win from Oglethorpes in quarterly debate.
DECEMBER 8. Miss Veazey's party demoralized when lights go out and brick is thrown. Could it be that someone was enjoying himself?

(Continued on Page 96)



S O P H O M O R E S

REFLECTOR

1935



First Row: SIMMONS, POUND, REMINGTON, AKINS, ARNOLD, AYCOCK
 Second Row: BIASLEY, BIASLEY, BICTON, BEDINGFIELD
 Third Row: BELL, BLITCH, BOATRIGHT, BRADY, BRINSON, BROWN
 Fourth Row: BROWN, BURNS, BUXTON, CARRUTHERS
 Fifth Row: CARTER, CHAMBLESS, CLIFTON, CROMLEY, COCKCROFT, CROSS

SOPHOMORES

LILLIAN SIMMONS, L. T. C. . . . Metter, Ga.
President
 ROBERT POUND, Iota Pi Nu . . . Swainsboro, Ga.
Secretary and Treasurer
 SARA REMINGTON, L. T. C. . . . Statesboro, Ga.
Student Council Representative
 SUDIE L. AKINS Statesboro, Ga.
 ALLEN ARNOLD, Delta Sigma . . . Parrott, Ga.
 MYRL AYCOCK Statesboro, Ga.
 JAMES E. BIASLEY Statesboro, Ga.
 WILLIAM R. BIASLEY Claxton, Ga.
 LOUIS BICTON Bloomingdale, Ga.
 ELOISE BEDINGFIELD, Dux Domina Rentz, Ga.
 GENE D. BELL, Delta Sigma Savannah, Ga.
 CAROLYN BLITCH Statesboro, Ga.

RICHARD BOATRIGHT Tennille, Ga.
 EDWIN BRADY Statesboro, Ga.
 SARA BRINSON, Epicurean Waynesboro, Ga.
 CAROLYN BROWN Statesboro, Ga.
 JAMES E. BROWN Alamo, Ga.
 ELIZABETH BURNS Eastman, Ga.
 JOE BUXTON Waynesboro, Ga.
 CHRISTINE CARRUTHERS Statesboro, Ga.
 GEORGE CARTER, Bachelors Club Cusseta, Ga.
 I. CHAMBLESS, Bachelors Club Waycross, Ga.
 ALBERT CLIFTON Statesboro, Ga.
 GRACE CROMLEY, L. T. C. Brooklet, Ga.
 MARY COCKCROFT Girard, Ga.
 ISABELLE CROSS Dover, Ga.



First Row: CURRIE, DAUGHTRY, DAVIS, DAVIS, DEAL, DEAL
Second Row: DIAL, DiLOACH, DeLOACH, DiLOACH
Third Row: DOWDY, DRURY, DUNBAR, EASON, EBERHARDT, ENICKS
Fourth Row: FARMER, FETZER, FULFORD, GARRISON
Fifth Row: GIDDENS, GLISSON, GREEN, GWYN, HARRIS, HENDERSON

SOPHOMORES

WILMER E. CURRIE *Alamo, Ga.*
 ELOISE DAUGHTRY *Glennville, Ga.*
 ARMINIE DAVIS *Summit, Ga.*
 MARY DAVIS, *Epicurean* *Savannah, Ga.*
 ELIZABETH DEAL *Statesboro, Ga.*
 JAMES DEAL, *Delta Sigma* *Statesboro, Ga.*
 MRS. W. DEAL, *Epicurean Sponsor*, *Statesboro, Ga.*
 ETHAN DeLOACH *Register, Ga.*
 HARRY DeLOACH *Hagan, Ga.*
 GUYTON DeLOACH *Claxton, Ga.*
 LAVALDA DOWDY *Hagan, Ga.*
 ALMA DRURY *White Oak, Ga.*
 LOUISE DUNBAR *Millhaven, Ga.*

LILLIAN EASON *Rendville, Ga.*
 JEANETTE EBERHARDT *Maysville, Ga.*
 IRENE ENICKS *Rocky Ford, Ga.*
 VIRGINIA FARMER *Stellaville, Ga.*
 HARLAND FETZER *Marlow, Ga.*
 DURWARD FULFORD, *Delta Sigma* *Summit, Ga.*
 WILLIAM GARRISON, *Delta Sigma* *Savannah, Ga.*
 LOFTON GIDDENS *Eastman, Ga.*
 LUCY MAE GLISSON *Cobbtown, Ga.*
 ALBERT GREEN *Statesboro, Ga.*
 BILL GWYN, *Iota Pi Nu* *Zebulon, Ga.*
 BOB HARRIS *Vidalia, Ga.*
 A. L. HENDERSON, *Bachelors Club* *Eatonton, Ga.*

REFLECTOR

1955



*First Row: HINSLEY, HINIS, HODGES, HODGES, HOLT, ILER
 Second Row: ILER, INGRAM, JACKSON, JACKSON
 Third Row: JAMES, JOHNSON, JOINER, JONES, KELLY, LAMBRIGHT
 Fourth Row: LAND, LANG, LANIER, LANSFETTER
 Fifth Row: LEE, LEVIN, LOVELL, LUCAS, LYNN, McELVEIN*

SOPHOMORES

JOHN HINSLEY Cobbtown, Ga.
 J. C. HINIS Hinesville, Ga.
 MARY JANE HODGES, L. T. C. . . . Brinson, Ga.
 MILDRED S. HODGES Brooklet, Ga.
 MARY HOLT Waycross, Ga.
 ELWIN ILER Pembroke, Ga.
 WENDILL H. ILER Pembroke, Ga.
 EDNA INGRAM Savannah, Ga.
 DOUGLAS JACKSON Gardi, Ga.
 JULIA JACKSON, L. T. C. Brinson, Ga.
 JESSE JAMES Waycross, Ga.
 ESTELLE JOHNSON Garfield, Ga.
 SARA LOUISE JOINER Chattanooga, Tenn.

ROSA DELE JONES Statesboro, Ga.
 JOHNNIE M. KELLY Avera, Ga.
 JOE LAMBRIGHT, Delta Sigma . . Brunswick, Ga.
 CORNELIA LAND, D. L. D. . . . Warrenton, Ga.
 MARIE LANG White Oak, Ga.
 MAGGIE LANIER Summit, Ga.
 VIRNA LANSFETTER, L. T. C. . . . Atlanta, Ga.
 MARY LEE LEE Statesboro, Ga.
 FRANCIS LEWIS Vidalia, Ga.
 LIZZIE D. LOVELL Girard, Ga.
 JOHN F. LUCAS Homerville, Ga.
 MILDRED LYNN Collins, Ga.
 HELEN McELVEIN, L. T. C. . . . Concord, Ga.



First Row: MCGREGOR, McKNEELY, McKNEELY, McKOWN, McLaurin, McLIMORI

Second Row: McNORRILL, McNORRILL, MALLORY, MATHIS

Third Row: MIDDLEBROOKS, MINICK, MINCHEW, MORGAN, MOULDER, O'NEAL

Fourth Row: PAGE, PIPPIN, PITCHFORD, POLLOCK

Fifth Row: PRICE, RABUN, RATLEY, RAULERSON, RIVERS, ROCKWELL

SOPHOMORES

ROBERT MCGRIGOR Halcyondale, Ga.
 MARVIN McKNEELY, *Bachelors Club* . Griffin, Ga.
 WAYNE McKNEELY, *Delta Sigma* . . Griffin, Ga.
 RAI McKOWN Mand, Okla.
 MARY McLaurin Metter, Ga.
 BOBBIE McLEMORE, *Iota Pi Nu* . Statesboro, Ga.
 GRACE McNORRILL Statesboro, Ga.
 MARGARET McNORRILL Statesboro, Ga.
 BURNIE MALLORY Clyn, Ga.
 ANDREW MATHIS Warthen, Ga.
 CARLOS MIDDLEBROOKS, *Delta Sigma* . Gray, Ga.
 EVELYN MINICK, *L. T. C.* . . . Statesboro, Ga.
 ASTOR MINCHEW Waycross, Ga.

FRANCES MORGAN Egypt, Ga.
 MARJORIE MOULDER Duluth, Ga.
 MARY SPIVY O'NEAL Chipley, Ga.
 MERRYLL PAGE Davisboro, Ga.
 MARTHA PIPPIN, *Dna Domina* . . Midville, Ga.
 HERBERT PITCHFORD Jensen, Fla.
 JACK POLLOCK Quitman, Ga.
 RUBY KATE PRICE Wrightsville, Ga.
 ROY RABUN Warrenton, Ga.
 JACK RATLEY Bainbridge, Ga.
 MADGE RAULERSON Patterson, Ga.
 MARJORIE RIVERS Avera, Ga.
 EDNA ROCKWELL Savannah, Ga.

REFLECTOR

1935



First Row: ROGERS, ROGERS, ROUNTRIE, SAUNDERS, SIMMONS, SIMMONS

Second Row: SMITH, SMITH, SMITH, STEBBINS

Third Row: STLIN, STEPHENSON, STEWART, SUNDY, TEDDER, TIPPINS

Fourth Row: TOOTLE, TOWNSEND, TOWNSEND, TRAPNELL

Fifth Row: UPCHURCH, WILKES, WOLFF, WOOD, YOUNG, ZEAGLER

SOPHOMORES

FLORENCE ROGERS Claxton, Ga.
 MARY ROGERS Reidsville, Ga.
 LOTTIE ROUNTRIE, *Dux Domina* . Reidsville, Ga.
 RICHARD SAUNDERS Montezuma, Ga.
 KATHRYN SIMMONS, *L. T. C.* Metter, Ga.
 MARY SIMMONS Statesboro, Ga.
 ALLENE SMITH Statesboro, Ga.
 MILDRED SMITH Manassas, Ga.
 SYBIL SMITH Roberta, Ga.
 BILLIE STEBBINS Townsend, Ga.
 JOE STLIN Colquitt, Ga.
 DORIS STEPHENSON Mt. Vernon, Ga.
 ELOISE STEWART Graymont, Ga.

LEONA SUNDY Waycross, Ga.
 KATHERINE TEDDER Marlow, Ga.
 ROBERT TIPPINS Claxton, Ga.
 MARION TOOTLE Manassas, Ga.
 J. TOWNSEND, *Bachelors Club* . Toombsboro, Ga.
 MARY TOWNSEND Toombsboro, Ga.
 CLEO TRAPNELL Metter, Ga.
 TERRELL UPCHURCH Clyattville, Ga.
 WILSON WILKES, *Delta Sigma* Adel, Ga.
 CHARLES WOLFF, *Iota Pi Nu* Waycross, Ga.
 MARTHA WOOD Macon, Ga.
 NANCY YOUNG, *L. T. C.* Nashville, Ga.
 MILDRED ZEAGLER, *Dux Domina* . Sylvania, Ga.



F R E S H M E N

REFLECTOR

1935



First Row: OLIVER, RYALS, WHEELER, HODGES, ABELSON, ACKERMAN, ADAMS
 Second Row: AKINS, AKINS, AKINS, ALDERMAN, ALDERMAN, ALEXANDER
 Third Row: ALLIN, ANDERSON, BACON, BACON, BACON, BANKS, BARGERON
 Fourth Row: BARROW, BLASLY, BIDDINGFIELD, BISHOP, BLAND, BLOCKER
 Fifth Row: BODDIFORD, BRANNIN, BREWTON, BROWN, BRUNSON, BURCH, BURKI

FRESHMEN

HEMANS OLIVER, *President* . . . Savannah, Ga.
 JACK RYALS, *Vice-President* . . . McRae, Ga.
 DELMAS WHEELER, *Iota Pi Nu* . . . Soperton, Ga.
 Secretary and Treasurer
 HUGH HODGES, *Iota Pi Nu* . . . Gnyton, Ga.
 Student Council Representative
 GEORGE ABELSON . . . Savannah, Ga.
 MATTHE ACKERMAN . . . Register, Ga.
 CLAIRE ADAMS . . . Hortense, Ga.
 EMILY AKINS, *Epicurean* . . . Statesboro, Ga.
 HAROLD AKINS . . . Statesboro, Ga.
 SARAH LANE AKINS . . . Statesboro, Ga.
 LOUISE ALDERMAN . . . Statesboro, Ga.
 LUCILE ALDERMAN . . . Statesboro, Ga.
 LANNIE ALEXANDER . . . Reidsville, Ga.
 EMORY ALLIN . . . Statesboro, Ga.
 ZELDA ANDERSON . . . Grovetown, Ga.
 LAWRENCE BURKI . . . Millen, Ga.

GERALD BACON . . . Pembroke, Ga.
 OPAL BACON . . . Glennville, Ga.
 VERNICE BACON . . . Manassas, Ga.
 MARJORIE BANKS . . . Glennville, Ga.
 JOHN BARGERON . . . Millhaven, Ga.
 SARA BARROW . . . Mathews, Ga.
 ARLINE BLASLY . . . Statesboro, Ga.
 GRACE BIDDINGFIELD . . . Rentz, Ga.
 NORMA BISHOP . . . Summertown, Ga.
 DAVID BLAND . . . Garfield, Ga.
 THERESA BLOCKER . . . Glennville, Ga.
 KNAPP BODDIFORD . . . Sylvania, Ga.
 MILDRED BRANNIN . . . Jesup, Ga.
 CLARA BREWTON . . . Groveland, Ga.
 JOHN W. BROWN . . . Warthen, Ga.
 MARY J. BRUNSON . . . Brooklet, Ga.
 EVELYN BURCH . . . Jacksonville, Ga.



First Row: BUNTON, BYRD, CARTIE, CANON, CHILDERS, CLARK, CLITT
 Second Row: CODY, COLLINS, COLLINS, CONE, COWART, CROMLEY
 Third Row: CROUCH, CULBRETH, CURRIE, DANIEL, DARSLEY, DAVIS, DEAL
 Fourth Row: DELOACH, DEWBERRY, DOMINY, DONOVAN, DUKIS, DURRINCE
 Fifth Row: EDWARDS, ELTON, ENGLAND, EVANS, FENDER, FITZER, FIELDS

FRESHMEN

MARY BUXTON Girard, Ga.
 ETHEL MAE BYRD, D. E. D. Bainbridge, Ga.
 JAMES WILLARD CARTIE Metter, Ga.
 MOLLIE CASON Tifton, Ga.
 ANNIE LAURA CHILDERS Quitman, Ga.
 RUTH CLARK Statesboro, Ga.
 GEORGE CLITT, Delta Sigma Bainbridge, Ga.
 ANNA CODY, D. L. D. Savannah, Ga.
 CARL COLLINS, Iota Pi Nu Statesboro, Ga.
 CAROLYN COLLINS Statesboro, Ga.
 FRANCES CONE, Ephevean Savannah, Ga.
 JAMES COWART Garfield, Ga.
 MARY CROMLEY, L. T. C. Brooklet, Ga.
 WALTON CROUCH Dawson, Ga.
 PAULA CULBRETH Edison, Ga.
 ALMA CURRIE Glenwood, Ga.

STELLA DANIEL Bellville, Ga.
 ETHELDA DARSLEY Hinesville, Ga.
 FUNICE DAVIS Ludowici, Ga.
 MAURICE DEAL Garfield, Ga.
 MARGARET DELOACH Portal, Ga.
 WILLIAM DEWBERRY Stillmore, Ga.
 MAE DOMINY Dublin, Ga.
 KATHARINE DONOVAN, Dux Domina, Wadley, Ga.
 CLIFFORD DUKIS Gibson, Ga.
 EVELYN DURRINCE Claxton, Ga.
 TOM J. EDWARDS Claxton, Ga.
 LORELLA ELTON Lumber City, Ga.
 KENNETH ENGLAND Wadley, Ga.
 JOHN EVANS Blakely, Ga.
 JAMES FENDER, Delta Sigma Jesup, Ga.
 ELISE FITZER Marlowe, Ga.

WILLIE HILL FIELDS Montezuma, Ga.

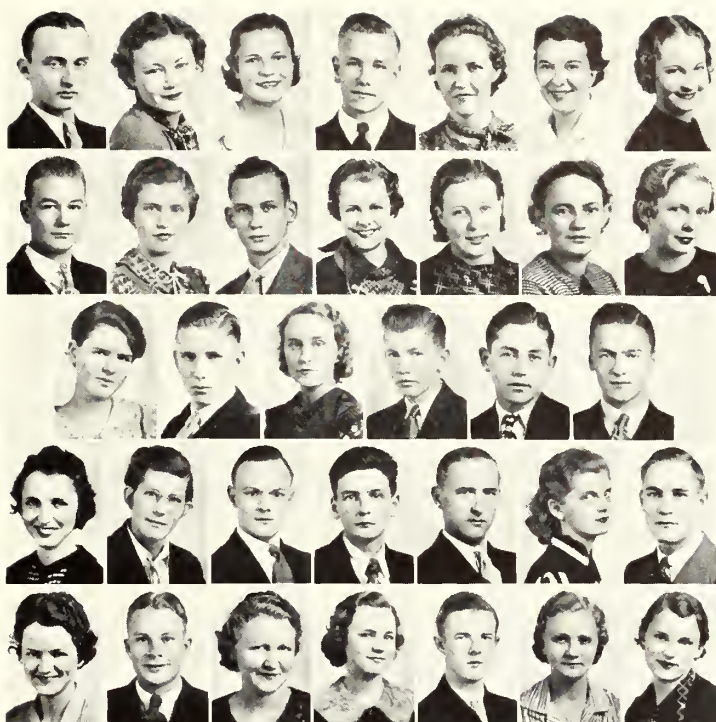


First Row: FOY, GILLIAM, GIVINS, GOLDEN, GRAY, HARPER, HARVEY
 Second Row: HATCHER, HATTAWAY, HAYES, HICKLY, HILL, HILTON, HODGES
 Third Row: HODGINS, HOGAN, HOLLINGSWORTH, HOOK, HUTCHINSON, IRVIN
 Fourth Row: JAMES, JINKINS, JOHNSON, JOHNSON, JONIS, JOSLY, JOSSLY
 Fifth Row: KENNEDY, KENNEDY, KENNEDY, KENT, KIEFFER, KINZY, KNOTTS

FRESHMEN

FAY FOY, *Dux Domina* Statesboro, Ga.
 IONE GILLIAM, *D. L. D.* Atlanta, Ga.
 ELIZABETH GIVENS Bloomingdale, Ga.
 J. C. GOLDEN Collins, Ga.
 BARBARA GRAY, *Epicurean* Waynesboro, Ga.
 ERNEST HARPER, *Delta Sigma* Jesup, Ga.
 MELBA HARVEY, *Dux Domina* Glennville, Ga.
 LORINNE HATCHER Kite, Ga.
 BERNICE HATTAWAY Cobbtown, Ga.
 VELMA HAYES Waycross, Ga.
 LAURA HICKEY, *Epicurean* Cusseta, Ga.
 ALICE HILL, *Dux Domina* Bainbridge, Ga.
 GEORGE HILTON Vidalia, Ga.
 GLENN HODGES Statesboro, Ga.
 JULIAN HODGES Statesboro, Ga.
 U. J. HOGAN Dexter, Ga.
 LOUISE HOLLINGSWORTH Collins, Ga.

FRANK HOOK, *Iota Pi Nu* Statesboro, Ga.
 MAURINE HUTCHINSON, *D. L. D.* Soperton, Ga.
 HELEN IRVIN Concord, Ga.
 HELEN JAMES Waycross, Ga.
 CLARA M. JENKINS Reidsville, Ga.
 J. B. JOHNSON Register, Ga.
 MARTHA JOHNSON Portal, Ga.
 MARJORIE JONES Statesboro, Ga.
 BETTY JOSEY, *L. T. C.* Anderson, S. C.
 SAM JOSSEY Adel, Ga.
 NONA KENNEDY Manassas, Ga.
 VERSIE KENNEDY Manassas, Ga.
 WILLIAM KENNEDY, *Iota Pi Nu* Statesboro, Ga.
 IDA KENT Millen, Ga.
 MERTICE KIEFFER Springfield, Ga.
 GEORGE KINZY Cedartown, Ga.
 HAROLD KNOTTS Cope, S. C.



First Row: LANIER, LANIER, McCORKLE, McGLAUN, McLEOD, MARTIN, MARTIN
 Second Row: MATHEWS, MILLER, MINCLEY, MINCEY, MOBLEY, MOBLEY, MOODY
 Third Row: MOORI, MULKEY, MURROW, ODOM, OLIVER, OLLIFF
 Fourth Row: OLLIFF, PAGE, PAINE, PARKER, RAY, REDDICK, RHODES
 Fifth Row: RIGGS, ROBERTSON, ROCKER, ROOKS, ROUGHTON, ROYAL, ROZIER

FRESHMEN

JOSH LANIER, *Iota Pi Nu* Statesboro, Ga.
 LATANE LANIER Statesboro, Ga.
 CATHERINE McCORKLE Thomson, Ga.
 WARREN McGLAUN Cusseta, Ga.
 EVELYN McLEOD Iron City, Ga.
 DOROTHY MARTIN Hinesville, Ga.
 IMOGENE MARTIN Cusseta, Ga.
 CHARLIE J. MATHEWS, *Iota Pi Nu*, Statesboro, Ga.
 JULIA MILLER Maysville, Ga.
 DERRICK MINCEY, *Iota Pi Nu* Claxton, Ga.
 ELOISE MINCEY, *Epicurean* Ogeechee, Ga.
 GERTRUDE MOBLEY Sardis, Ga.
 JULIA MOBLEY Millen, Ga.
 ELIZABETH MOODY Daisy, Ga.
 NINA MOORI Statesboro, Ga.
 HARVIN MULKEY Pompano, Fla.
 MILDRED MURROW Rocky Ford, Ga.

CLEON ODOM Claxton, Ga.
 WARREN OLIVER Rocky Ford, Ga.
 CHARLES OLLIFF, *Iota Pi Nu* Statesboro, Ga.
 MILDRED OLLIFF Register, Ga.
 CORA PAGE Lyons, Ga.
 DANIEL PAINE Waycross, Ga.
 FRANKLIN PARKER Sylvania, Ga.
 CURTIS RAY Bayley, Ga.
 LILLIAN REDDICK, *Dux Domina*, Bainbridge, Ga.
 GLINN RHODES Stapleton, Ga.
 ABBIE KATE RIGGS Statesboro, Ga.
 PAUL ROBERTSON Brooklet, Ga.
 MILDRED ROCKER Crawfordville, Ga.
 DOLORES ROOKS Leary, Ga.
 LI ROY ROUGHTON Sandersville, Ga.
 FRANCES ROYAL Girard, Ga.
 RUBY GLADYS ROZIER Stilson, Ga.



First Row: RUSHTON, SCRUGGS, STEIGMAN, SINTY, SHAW, SMITH, SMITH
 Second Row: SMITH, SMITH, SORRIER, STEPHENS, TLETS, THRIFT, TIPPINS
 Third Row: TOMLIN, TONGI, TUCKER, WADI, WALLER, WARNOCK, WARREN
 Fourth Row: WARREN, WARREN, WATERS, WATKINS, WATSON, WILLITS, WILLIAMS
 Fifth Row: WINHAM, WOMACK, WOODARD, WOODS, YEOMANS, ZEIGLER, YOUNG

FRESHMEN

ALVIS RUSHTON	Rocky Ford, Ga.	NANNIE SUE WADE	Parrott, Ga.
GLENN SCRUGGS	Morven, Ga.	GLADYS WALLER	Swainsboro, Ga.
RUTH STEIGMAN	Statesboro, Ga.	LAVIENE WARNOCK	Statesboro, Ga.
JEAN SINTY	Savannah, Ga.	JAMES WARREN	Pulaski, Ga.
MARGARIT SHAW	Smyrna, Ga.	NED WARREN	Pulaski, Ga.
CATHERINE SMITH	Metter, Ga.	NEDRA WARREN	Stillmore, Ga.
DUDLEY SMITH	Eastman, Ga.	HOWARD WATERS	Hilltonia, Ga.
LILLIAN R. SMITH	Cork, Ga.	LOUIS WATKINS	Reidsville, Ga.
MARION SMITH	Indowici, Ga.	HOLDER WATSON, Delta Sigma	Louisville, Ga.
ISABEL SORRIER	Statesboro, Ga.	JEANETTE WILLITS	Vidalia, Ga.
BARTON STEPHENS, Iota Pi Nu	Wrens, Ga.	MELBA WILLIAMS	Register, Ga.
SYBIL TLETS	Brooklet, Ga.	TULLIE WINHAM	Glennwood, Ga.
MARY THRIFT	Cobbtown, Ga.	CONRAD WOMACK	Statesboro, Ga.
ELIZA TIPPINS	Claxton, Ga.	CHARLES WOODARD, Delta Sigma	Atlanta, Ga.
BURMA TOMLIN	Lyons, Ga.	IRMA WOODS	Oak Park, Ga.
WILLIAM TONGI	Bainbridge, Ga.	J. C. YEOMANS	Levy, Ga.
HELEN TUCKER	Statesboro, Ga.	ELRICH ZEIGLER	Ogeechee, Ga.
EBB YOUNG, Iota Pi Nu	Statesboro, Ga.		



ACTIVITIES

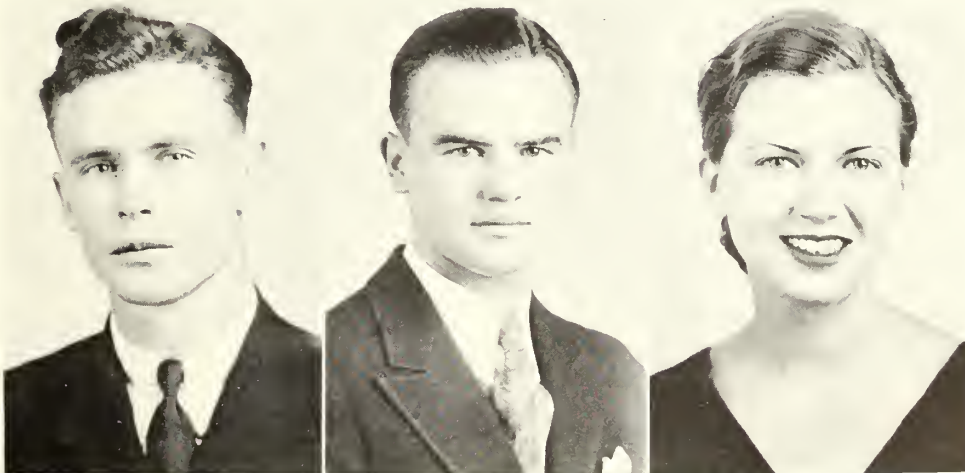
STUDENT GOVERNMENT

STUDENT GOVERNMENT was inaugurated at South Georgia Teachers College in the fall of 1934-35. It began as an experiment and was designed to prove the willingness and the ability of the students to accept individual and group responsibilities. The existence of the organization depended upon its proved worth.

From the beginning there was apparent a splendid responsive attitude on the part of the students. Faculty and students were brought into more intimate contact. More attention was given to institutional problems and co-operative methods of dealing with them were found. By the use of constructive suggestions, the problems generally prevalent in a co-educational institution have been reduced. Prevention rather than cure has been the policy of the student government organization.

One year is too short a period in which to determine whether or not an organization, set up as an experiment, is successful. Yet in this brief time, worthwhile accomplishments are evident. A more representative type of student extra-activities, the development of a democratic spirit, and the enhanced value of personal responsibility are some of the improvements which may be cited.

The distinct advantage of student government is that it can do better some of the things which are the duties of the authorized college administration. The leaders and members of the various units of student government this year are learning how to shoulder real responsibility.



J. D. CHERRY
President

EDGAR WARI
Vice-President

LOUISE QUANTOCK
Secretary



Left to Right: HODGES, OLIVER, REMINGTON, SIMMONS, ELLIS, DONALDSON, STEWART, MATHEWS, GREENE, OLLIFF, QUANTOCK, WARE, CHERRY

STUDENT GOVERNMENT

Student Council

THE STUDENT COUNCIL is the centralized head of the entire Student Government organization. Within this body resides authority to initiate and to enforce necessary regulations affecting student life. It is a representative group of the entire student body. The work of the Council is carried on mainly through a system of committees. The committees are organized so as to take care of a definite department of college activities.

OFFICERS

J. D. CHERRY	<i>President</i>
EDGAR WARE	<i>Vice-President</i>
LOUISE QUANTOCK	<i>Secretary</i>
LILLIAN SIMMONS	<i>Treasurer</i>

MEMBERS

Seniors

HELEN OLLIFF	<i>Class President</i>
JEWEL GREENE	<i>Representative</i>
IRIS ROBERTS	<i>Representative</i>
EVILYN MATHEWS	<i>Representative</i>

Juniors

BILL STEWART	<i>Class President</i>
ALTON ELLIS	<i>Representative</i>
GEORGE DONALDSON	<i>Representative</i>

Sophomores

LILLIAN SIMMONS	<i>Class President</i>
SARAH REMINGTON	<i>Representative</i>

Freshmen

HEMANS OLIVER	<i>President</i>
HUGH HODGES	<i>Representative</i>

STUDENT GOVERNMENT

General Committee

THE GENERAL COMMITTEE is made up of the various presidents of the residential halls of the College, four members of the faculty, the Student Council, and the presidents of the five major organizations which are open to all matriculated students on the campus.

OFFICERS

J. D. CHERRY, *President of Student Council* *Chairman*
 HASSIE MAUDE McELVEEN, *President Y. W. C. A.* *Secretary*

MEMBERS

House Presidents

VICTORIA CONE
 JIM WRINKLE
 ARMINI DAVIS

ELOISE DAUGHTRY
 HARRY ZALUMAS
 SIDNEY STAPLTON
 ELMER BREWTON

MILDRED SMITH
 EDNA ROCKWELL
 LUCILE ANDERSON

Presidents of Organizations

J. D. PURVIS
 Y. M. C. A.
 LOFTON GIDDENS
Stephens Literary Society

HASSIE MAUDE McELVEEN
 Y. W. C. A.

VICTORIA CONE
 W. A. A.
 GEORGE CARTER
Oglethorpe Literary Society

Faculty

MISS VEAZEY

MR. RUSSELL

MISS LANI

Administration

DEAN HENDERSON

Student Council

J. D. CHERRY
 EDGAR WARE
 LOUISE QUANTOCK
 HELEN OLLIFF
 JEWEL GREENE

EVELYN MATHIEWS
 BILL STEWART
 GEORGE DONALDSON
 ALTON ELLIS

IRIS ROBERTS
 LILLIAN SIMMONS
 SARAH REMINGTON
 HUGH HODGES
 HEMANS OLIVER





YOUNG WOMEN'S CHRISTIAN ASSOCIATION

THEME: *"I am come that they might have life, and
that they might have it more abundantly."*

—JOHN 10:10

OFFICERS

HASSIE MAUDE McELVEEN	President
ELWYN WILSON	Treasurer
EDNA BENNETT	Secretary
MARIE LANG	Pianist
MRS. A. A. SINGLEY	Sponsor
MRS. F. D. RUSSELL	Sponsor
MRS. ZACH S. HENDERSON	Sponsor

CABINET

IDA MAE HAGIN	KATHERINE TEDDER
FRANCES MORGAN	MARY ROGERS
JEWEL GREENE	IRIS ROBERTS
MARTHA PIPPIN	LILLY ELLIS

GRACE CROMLEY

YOUNG WOMEN'S CHRISTIAN ASSOCIATION

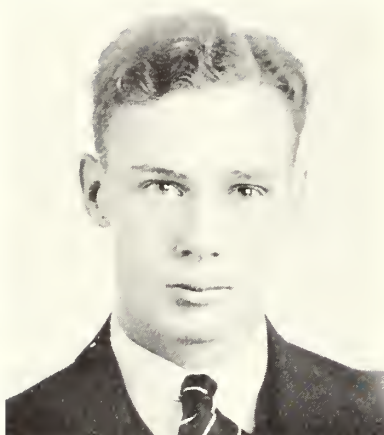
MEMBERS

EMILY AKINS
 BONNIE LOU AYCOCK
 FLOISE BEDINGFIELD
 GRACE BEDINGFIELD
 ANNIE LAURA BOSWELL
 MILDRED BRANNEN
 SARA BRINSON
 ELIZABETH BURNS
 ETHEL MAE BYRD
 MATTIE CAIN
 EVELYN CHERRY
 MARY COCKCROFT
 ANNA CODY
 MAYO CODY
 FRANCES CONL
 VICTORIA CONF
 GRACE CROMLEY
 MARY CROMLEY
 ARMINIE DAVIS
 EUNICE DAVIS
 MAURICE DEAL
 NINA DEKLE
 MAE DOMINY
 KATHERINE DONOVAN
 LOUISE DUNBAR
 JANIE DURRENCE
 LILLIAN EASON
 JEANETTE FBERHARDT

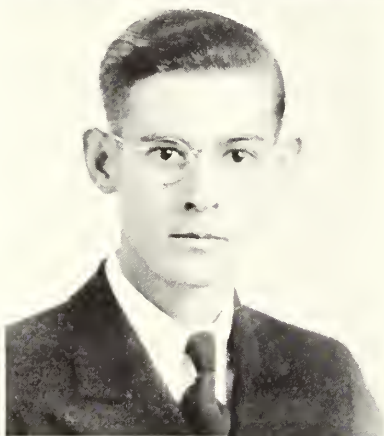
LILLY ELLIS
 ELISE FETZER
 FAY FOY
 IONE GILLIAM
 LUCY MAE GLISSON
 VELMA HAYES
 FRANCES HERRINGTON
 MARY HERRINGTON
 LAURA HICKEY
 MARY JANE HODGES
 MAURINE HUTCHINSON
 JULIA JACKSON
 MARY JERALD
 BETTY JOSTY
 JOHNNIE MAUDE KELLY
 IDA KENT
 MERTICE KUTTER
 CORNELIA LAND
 MARIE LANG
 FRANCES LEWIS
 LIZZIE DELL LOVETT
 HASSIE MAUDE McEIVEN
 MARY McLAURIN
 JULIA MILLER
 EVELYN MINICK
 ARDELIA MOBLEY
 GERTRUDE MOBLEY
 FRANCES MORGAN

JOSEPHINE MUNSON
 KATHERINE OVERMAN
 MARTHA PIPPIN
 EVELYN PLYLER
 RUBY KATI PRICE
 LILLIAN RIDDICK
 SARAH RIMINGTON
 IRIS ROBERTS
 MABLE ROCKEF
 MILDRED ROCKIE
 MARY ROGERS
 LOTTIE ROUNTREE
 SARA KATI SCARBORO
 JEAN SENEY
 KATHRYN SIMMONS
 LILLIAN SIMMONS
 CATHARINE SMITH
 BILLIE STEBBINS
 FLOISE STEWART
 KATHERINE TIDDER
 MARY THRIFT
 BURMA TOMLIN
 MARJORIE TOOLE
 CLO TRAPNELL
 ELWYN WILSON
 LOUISE WATKINS
 KATHRYN YEOMANS
 NANCY YOUNG

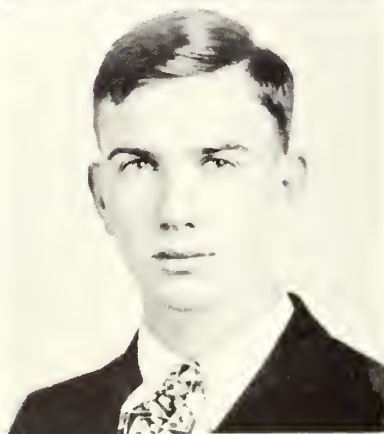




J. D. PURVIS
President



RUFUS McDUFFIE
Vice-President



S. D. DUNCAN
Secretary-Treasurer

YOUNG MEN'S CHRISTIAN ASSOCIATION

IT HAS BEEN the purpose of the Y. M. C. A., since its organization here in 1929, to help students preserve and apply whatever religious and moral values they may have developed before coming to college, and to make possible a spiritual growth in the lives of all students. These things are accomplished by offering each a chance for religious thought and study; by providing opportunity for experience where ideals and principles may be lived in actual life situations; and by creating a consciousness of new trends and values in religion.

The "Y" also concerns itself with the social training of the students. It endeavors to make that part of their education symmetrical with their mental development by providing social contact of the most wholesome sort. Members are also given valuable social training in learning to express themselves clearly before an audience.

During its existence at this institution, the Young Men's Christian Association has established for itself a fine reputation and strong support for its influence in bettering campus life.

Standing Committees of Y. M. C. A.

Vespers

DOUGLAS JACKSON

Pianist

JOHN BRIDGES

Membership

BILL STEWART

Chairman

ELTON ANDERSON
HEMANS OLIVER
WARREN MCGLAUN

Chorister

HOWELL MARTIN

Welfare

DARIS RAULERSON

Chairman

WILL FIELDS
WALTER HENDERSON
LI ROY ROUGHTON

"Y Mass"

GEORGE CARTER

Social

LOFTON GIDDENS

Chairman

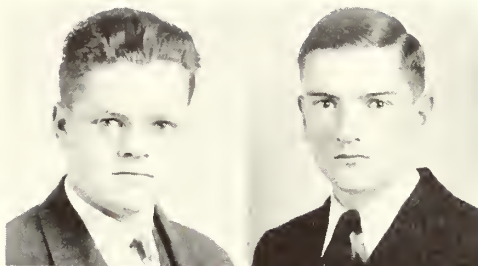
LELAND COX
EUGENE HINELY
BARTON STEPHENS
HUGH HODGES

Advisory Committee

R. L. WINBURN
SOPHIE JOHNSON
F. D. RUSSELL

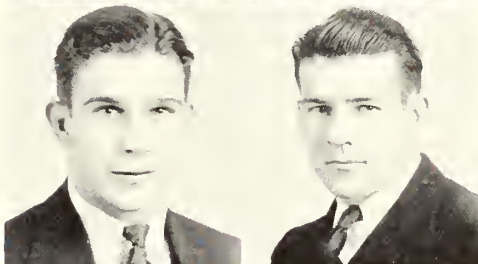
JACKSON

BRIDGES



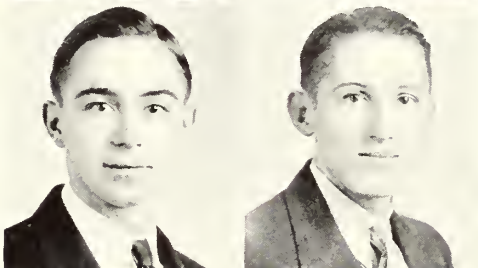
STEWART

MARTIN



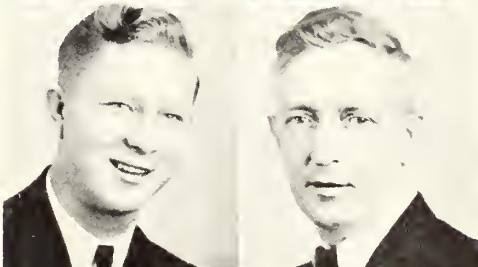
RAULERSON

CARTER



GIDDENS

WINBURN



JOHNSON

RUSSELL





STEPHENS LITERARY SOCIETY

OFFICERS

	<i>Spring</i>	<i>Fall</i>	<i>Winter</i>
<i>President</i> . . .	SIDNLY STAPLETON	LOFTON GIDDENS	GRACE CROMLEY
<i>Vice-President</i> . .	HOBSON DUBOSE	GRACE CROMLEY	RUFUS McDUFFIE
<i>Secretary</i> . . .	MARTHA SMITH	VICTORIA CONE	KATHRYN SIMMONS
<i>Treasurer</i> . . .	HAL CLEMENTS	NANCY YOUNG	JOE BUXTON

DEBATERS

<i>Spring</i>	<i>Fall</i>	<i>Winter</i>
GRACE CROMLEY	MELBA HARVEY	NANCY YOUNG
JAMES ADAMS	JAMES BROWN	HEARN LUMPKIN

MISS NEWTON AND MR. SINGLEY	<i>Sponsors</i>
ALVA CAROLINE SINGLEY	<i>Mascot</i>

MEMBERS

CLAIRE ADAMS
 BONNH LOU AYCOCK
 VERNICE BACON
 EDNA BENNETT
 JAMES BROWN
 EVELYN BURCH
 ELIZABETH BURNS
 JOE BUXTON
 MATTIE CAIN
 EVELYN CHERRY
 VICTORIA CONE
 MARY CROMLEY
 GRACE CROMLEY
 HARRY DELOACH
 MARY DOYLE
 HOBSON DUBOSE
 LOUISE DUNBAR
 GWENDOLYN DIKEL

WILLIAM DEWBERRY
 BERTHA HAGIN
 MELBA HARVEY
 FRANCIS HERRINGTON
 MARY JANE HODGES
 DOUGLAS JACKSON
 LOUISE JOINER
 BETTY JOSEY
 LIONARD KINT
 MERTICE KIFFER
 CORNELIA LAND
 VIRNA LASSITER
 FRANCES LEWIS
 EVELYN MINICK
 BURNIE MALLORY
 HASSIE MAUDE McELVEEN
 HORACE ODOM
 AUBRIY PALFORD

RUBY KATE PRICE
 MARTHA PIPPIN
 LOUISE QUANTOCK
 SARAH REMINGTON
 LOUISE ROZIER
 PAUL ROBERTSON
 LOTTIE ROUNTREL
 MARY ROGERS
 ROY RABUN
 KATHRYN SIMMONS
 LILLIAN SIMMONS
 SARA KATE SCARBORO
 SIDNLY STAPLETON
 BLAKELY THORNTON
 JIM WRINKLE
 KATHRYN YEOMANS
 NANCY YOUNG
 MISS NEWTON

OGLETHORPE LITERARY SOCIETY

OFFICERS

	<i>Spring</i>	<i>Fall</i>	<i>Winter</i>
<i>President</i> . . .	GEORGE CARTER	GEORGE CARTER	LEROY ROUGHTON
<i>Vice-President</i> . .	HELEN GODBEE	IRINE ENCKS	IRINE ENCKS
<i>Secretary</i> . . .	MARTHA WOOD	ISABELLE CROSS	HELEN IRVIN
<i>Treasurer</i> . . .	ISABELLE CROSS	WILL FIELDS	HELEN McELVEEN

DEBATERS

<i>Spring</i>	<i>Fall</i>	<i>Winter</i>
MAYO CODY	IRIS ROBERTS	MILDRED BRANNIN
ALTON ELLIS	CHASON HARRISON	AUTON ELLIS

MR. RUSSELL AND MRS. BUTTRILL *Sponsors*

MEMBERS

ELTON ANDERSON
 RICHARD BOATRIGHT
 TORRANCE BRADY
 MILDRED BRANNIN
 ELMER BREWTON
 ETHEL MAE BYRD
 ANNIE LAURIE CHILDERS
 ANNA CODY
 MAYO CODY
 ISABELLE CROSS
 EUNICE DAVIS
 ERNEST DOWNING
 KAREL DOWNING
 ALTON ELLIS
 IRINE ENCKS
 KENNETH ENGLAND
 JOHN EVANS
 ELISE FLIZER
 WILL FIELDS
 IONE GILLIAM
 ELOISE GRAHAM

BARBARA GRAY
 CHASON HARRISON
 LAURA HICKLY
 HUGH HODGES
 MAURINE HUTCHINSON
 EDNA INGRAM
 HELEN JAMES
 JESSE JAMES
 ERNEST LEWIS
 HOWELL MARTIN
 IMOGENE MARTIN
 KATHERINE MCCORRIE
 MARY McLAURIN
 MARVIN McKNILLY
 ELOISE MINCIY
 ELIZABETH MOODY
 MARGARET MOORE
 FRANCIS MORGAN
 HARVIN MULKY
 CHARLES MUNCH

MILDRED MURROW
 MYRTLE OLIVINI
 MARGARET OWENS
 FRANKLIN PARKER
 JACK RAITLY
 LILLIAN REDDICK
 IRIS ROBERTS
 DOLORIS ROOKS
 LEROY ROUGHTON
 JEAN SENEY
 CATHERINE SMITH
 ELOISE STEWART
 WILLIAM STEWART
 KATHERINE TIDDER
 ELIZA TIPPINS
 JAMES TOWNSEND
 MARY THIRIFT
 CLEO TRAPNELL
 MARTHA WOOD
 GEORGE CARTER
 HARRY ZALUMAS





MATH CLUB

OFFICERS

RUFUS McDUFFIE	<i>President</i>
MAYO CODY	<i>Vice-President</i>
MARY ROGERS	<i>Secretary and Treasurer</i>
MISS PERRY	<i>Sponsor</i>

MEMBERS

ELMER BREWTON
 JOHN BRIDGES
 GEORGE CARTER
 VICTORIA CONE
 LELAND COX
 DOUGLAS DURDEN
 BILLY GWYN
 LEONARD KENT
 LAMAR LAYTON
 HASSIE MAUDE McELVEEN
 HORACE ODOM
 MARGARET OWENS

ROY RABUN
 MARVIN REDDICK
 HERSCHEE SESSIONS
 CATHERINE SMITH
 MARVIN SMITH
 BILL STEWART
 JOHN THAYER
 BLAKELY THORNTON
 MARJORIE TOOLE
 JAMES TOWNSEND
 EDGAR WARE
 MARTHA WOOD

JIM WRINKLE

POPULAR SCIENCE CLUB

OFFICERS

Fall Term

GEORGE CARTER	<i>President</i>
VICTORIA CONE	<i>Vice-President</i>
KATHRYN SIMMONS	<i>Secretary</i>
MARVIN MCKNEELY	<i>Treasurer</i>

Winter and Spring Terms

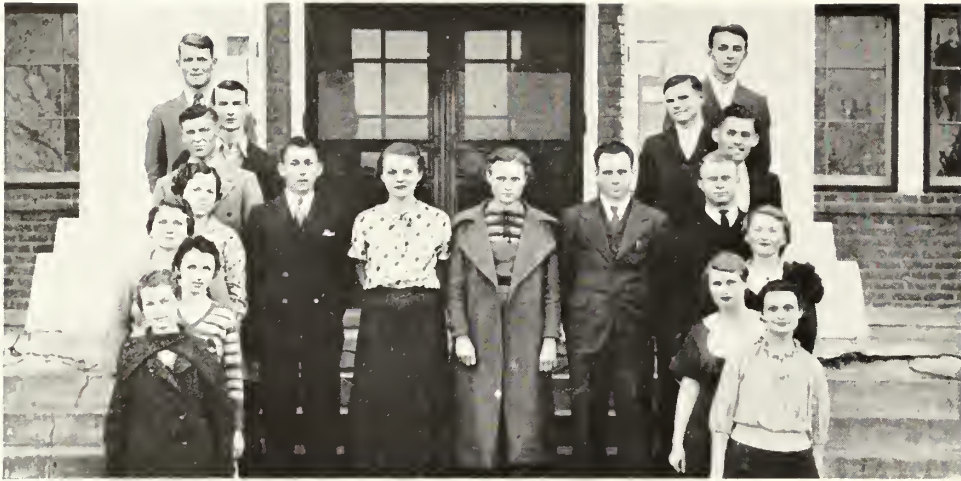
MARVIN MCKNEELY	<i>President</i>
LUCILE ANDERSON	<i>Vice-President</i>
KATHRYN SIMMONS	<i>Secretary and Treasurer</i>

MR. HANNER, MISS TRUSSELL, DR. DeLOACH *Sponsors*

MEMBERS

LUCILE ANDERSON	S. D. DUNCAN	JISSE JAMES	LEROY ROUGHTON
JOHN BARGIRON	JEANLTTI EBERHARDT	JOHNNIE M. KELLY	LOUISE ROZIER
BILL BIDGOOD	VIRGINIA EDENFIELD	MERTICE KILFIR	JEAN SINLY
RICHARD BOATRIGHT	ALTON ELLIS	TRAVIS KIRKLAND	MARGARIT SHAW
KNAPP BODDIFORD	ROBERT ESPY	VIRNA LASSITTER	KATHRYN SIMMONS
EVILYN BURCH	JOHN EVANS	HASSIE M. McELVEEN	LILLIAN SIMMONS
ELMER BREWTON	WILL FIELDS	WARREN MCGLAUN	MARY K. SNIED
ETHEL MAE BYRD	BILL GARRISON	MARVIN MCKNEELY	JOE STILIN
MATTIE CAIN	IONL GILLIAM	JULIA MILLER	BILL STEWART
GEORGE CARTER	J. C. GOLDEN	J. D. PURVIS	CLO TRAPNILL
ANNA CODY	ELOISE GRAHAM	FRANK QUATILBAUM	EDGAR WARE
MAYO CODY	JEWEL GREENE	ROY RABUN	MARTHA WOOD
VICTORIA CONE	IDA MAE HAGIN	MARVIN RIDDICK	JIM WRINKLE
LILLIAN COX	FRANCES HERRINGTON	SARAH REMINGTON	KATHRYN YEMANS
GRACE CROMLEY	LAURA HICKLY	PAUL ROBERTSON	NANCY YOUNG
MARY CROMLEY	HUGH HODGES	MABLE ROCKIE	





4-H CLUB

OFFICERS

JESSE JAMES *President*
 INEZ BREWTON *Vice-President*
 LOUISE HOLLINGSWORTH *Secretary and Treasurer*
 MR. RUSSELL *Sponsor*

MEMBERS

RALLIGH BEASLEY	ERNEST DOWNING
ELMO BIGGERS	BERNICE HATTAWAY
KNAPP BODDIFORD	LOUISE HOLLINGSWORTH
ELMER BREWTON	HELEN JAMES
CLARA BREWTON	JESSE JAMES
INEZ BREWTON	VERSIE KENNEDY
LAWRENCE BURKE	NONA KENNEDY
EUNICE DAVIS	GEORGE KINZY
HARRY DeLOACH	LILLIAN WHEELS

TULIH WINHAM

MOTTO: "To make the best better."

EMBLEM: A four-leaf clover bearing a 4 in each leaf.

PLLEDGE: I pledge:

My head to clearer thinking;
My heart to greater loyalty;
My hands to larger service;
My bealth to my club, community, and my country.

HOME ECONOMICS CLUB

OFFICERS

JEWELL GREENE	<i>President</i>
VIRGINIA WILSON RUSSELL	<i>Vice-President</i>
EDNA BENNETT	<i>Secretary</i>
VERNA LASSETTER	<i>Treasurer</i>

MISS BOLTON AND MISS SMALL *Sponsors*

MEMBERS

MYRLE AYCOCK	FRANCES LEWIS
ELOISE BEDINGFIELD	BURNIE MALLORY
EDNA BENNETT	MARGARET MOORE
TORRANCE BRADY	RUBY KATE PRICE
INEZ BREWTON	MADGE RAULERSON
MATTIE CAIN	MARJORIE RIVERS
JEANETTE EBERHARDT	MABLE ROCKER
JEWELL GREENE	LOUISE ROZIER
FRANCES HERRINGTON	VIRGINIA WILSON RUSSELL
MARIE LANG	KATHRYN SIMMONS
VERNA LASSETTER	ELOISE STEWART
MARY LEE LEE	CHLOE TRAPNELL

KATHRYN YEOMANS



First Row: BOLTON, SMALL

Second Row: GREENE, RUSSELL, BENNETT, LASSETTER



LE CERCLE FRANCAIS

THE PURPOSE of Le Cercle Francais is to inspire a love, appreciation, and better understanding of the French language.

LE BUREAU

KATHIRINE TEDDER	<i>La President</i>
CLEO TRAPNELL	<i>La Vice-President</i>
NANCY YOUNG	<i>La Secretaire</i>
LOFTON GIDDENS	<i>Le Treserier</i>

LES MEMBRES HONORAIRES

DR. SMITH

MRS. HANNER

LES MEMBRES

BONNIE LOU AYCOCK
JOHN BARGERON
EDMUND BLUE
CLARA BREWTON
JAMES BROWN
GEORGE CARTER
RUTH CLARK
GRACE CROMLEY
NEWELLE DELOACH
LILLIAN EASON
KENNETH ENGLAND
VIRGINIA FARMER
LOFTON GIDDENS
DOUGLAS JACKSON

BURNIE MALLORY
MARVIN MCKNEELY
EVELYN MINICK
HARVIN MULKEY
MARGARET OWENS
IRIS ROBERTS
MARY ROGERS
LOTTIE ROUNTREE
KATHRYN SIMMONS
CATHERINE SMITH
ISABEL SORRIER
KATHERINE TEDDER
CLEO TRAPNELL
NANCY YOUNG

GLEE CLUB

OFFICERS

EBB YOUMANS *President*
 MRS. WILLIAM DEAL *Vice-President*
 GRACE CROMLEY *Secretary and Treasurer*

PIANISTS

MYRLE AYCOCK MRS. WILLIAM DEAL
 MRS. E. L. BARNES, *Director*

MEMBERS

MARTHA PIPPIN
 LOTTIE ROUNTREE
 MRS. WILLIAM DEAL
 NEWELLE DELOACH
 LOUISE JOINER
 MARY SPIVY O'NEAL
 MARY TOWNSEND
 MILDRED LYNN
 DOROTHY FREEMAN
 BERNICE HATTAWAY
 MAYO CODY

GRACE CROMLEY
 HENRIETTA MOORE
 ELOISE STEWART
 IRENI ENICKS
 MILDRED MURROW
 JEANETTE WILLETS
 PAUL ROBERTSON
 MARVIN REDDICK
 DEEMAS WHEELER
 CHARLES PAINE
 SHIELDS KINAN

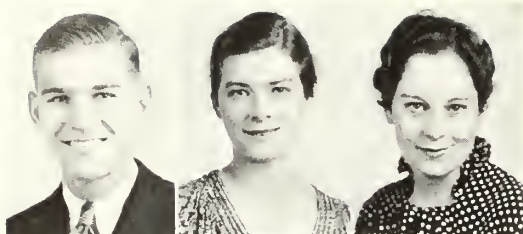
ROBERT MCGRIGOR
 WILBUR SUMNER
 RICHARD SAUNDERS
 BOB SHELL
 EBB YOUMANS
 CHARLES MUNCH
 JOHN LUCAS
 JAMES TOWNSEND
 JOE BUXTON
 LOFTON GIDDENS
 S. D. DUNCAN

ALTERNATES

ESTELLE JOHNSON
 MILDRED ZEAGLER
 GWENDOLYN DEKLE
 NINA DEKLE
 CARRIE FREEMAN
 ETHELDA DARSEY

ASTOR MINCHIW
 BOB HARRIS
 HUGH HODGES
 WILL FIELDS
 LELAND COX
 EUGENE DAVIS





First Row: McKNEELY, BENNETT, HODGES
Second Row: DUNCAN, MRS. DEAL, MR. DEAL

DRAMATIC CLUB

OFFICERS

MARVIN MCKNEELY
President

EDNA BENNETT
Vice-President

MARY JANE HODGES
Secretary

S. D. DUNCAN
Treasurer

MR. AND MRS. WILLIAM DEAL
Sponsors

MEMBERS

LOUIS BECTON
EDNA BENNETT
BILL BIDGOOD
ANNIE L. BOSWELL
TORRANCE BRADY
JOHN BRIDGES
ELIZABETH BURNS
GEORGE CARTER
MAYO CODY
FRANCES CONI
LELAND COX
GRACE CROMLEY
ISABELL CROSS
ARMINE DAVIS
JAMES DEAL

MR. WILLIAM DEAL
MRS. WILLIAM DEAL
NINA DEKLE
NEWELL DILOACH
WILLIAM DEWBERRY
GEORGE DONALDSON
MARY DOYLE
HOBSON DUBOSE
S. D. DUNCAN
KENNETH ENGLAND
WILL FIELDS
LOFTON GIDDENS
IONE GILLIAM
J. C. GOLDEN
ELOISE GRAHAM

BILLY GWYN
CHASON HARRISON
FRANCIS HERRINGTON
HUGH HODGES
MARY JANE HODGES
EDNA INGRAM
JULIA JACKSON
JESSE JAMES
JOHNNIE M. KELLY
VIRNA LASSETTER
LIZZIE DELL LOVETT
BURNIE MALLORY
HOWELL MARTIN
MARVIN MCKNEELY
MARTHA PIPPIN

J. D. PURVIS
DARIS RAULERSON
ABBIE KATE RIGGS
LEROY ROUGHTON
LOTTIE ROUNTRIE
RICHARD SAUNDERS
SARA KATE SCARBORO
JEAN SENEY
BOB SHELL
BILL STEWART
JAMES TOWNSEND
DELMAS WHEELER
CONRAD WOMACK
NANCY YOUNG



THE GEORGE-ANNE

Best
Neighbors

**The George-
Anne**

PUBLISHED BY THE
A. ELLIS

VOL. 1
**CLUBS WELCOME
TEACHERS ALUMNI**



EDITOR

Best
Member

A. ELLIS COLLEGE

NO. 4

Coming To

			
M. CODY ASST. ED.	J.D. PURVIS MG. ED.	M. BLITCH BUS. MGR.	M. MCKNEELEY LIT. ED.
			
E. GRAHAM FEATURED.	G. DONALDSON SPORT	L. QUANTOCK EXCHANGE	H. OLIVER ASST. SPORTS
			
E. WILSON CLUB ED.	G. CARTER CIRCUL. MGR.	L. GIDDENS REPORTER	N. YOUNG REPORTER
			
B. STEPHENS REPORTER	J. SINEY REPORTER	W. GARRISON TYPIST	R. DONALDSON FAC. ADVISER

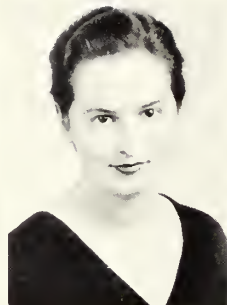
REFLECTOR

1935

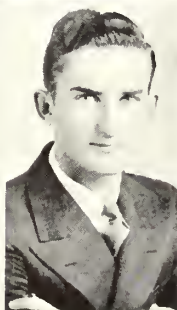
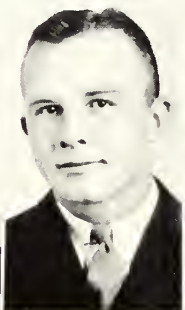
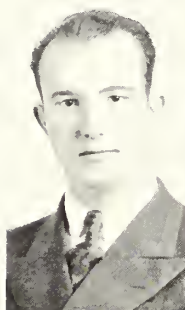
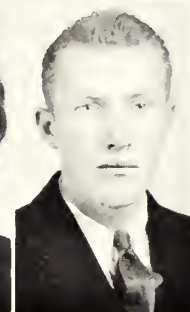
THE REFLECTOR



LEONARD KENT
Editor-in-Chief



HELEN OLLIFF
Business Manager



THE REFLECTOR

— 1935 —

THE STAFF

LEONARD KENT	<i>Editor</i>
HELEN OULIFF	<i>Business Manager</i>

LITERARY

MARY MARGARET BLITCH	<i>Associate Editor</i>
HASSIE MAUDE McELVEEN	<i>Literary Editor</i>
LUCILE ANDERSON	<i>Art Editor</i>
JIM WRINKLE	<i>Sports Editor</i>
FRANK QUATTLBAUM	<i>Club Editor</i>

BUSINESS

JEWEL GREENE }	<i>Advertising Managers</i>
GORDON MAYS }	
ALBERT DEAL	<i>Assistant Advertising Manager</i>
SHELBY MONROE }	<i>Circulation Managers</i>
LOUISE QUANTOCK }	
SIDNEY STAPLETON }	
VICTORIA CONE }	<i>Photographic Editors</i>
CHARLES MUNCH }	
MRS. BUTTRILL }	
MR. DONALDSON }	<i>Faculty Advisors</i>
MISS SMALL }	

OUR BEGINNING—A HOPE FOR THE FUTURE

THE PUBLICATION of the 1935 REFLECTOR introduces a new epoch in the annals of South Georgia Teachers College. It is a presentation of the first Senior yearbook and also the first annual of the college to be published by the Senior Class. The Class of '35 deems this a unique privilege, and hopes that this precedent will be upheld by the classes in the future.

Every effort has been expended by the staff to produce a book of notable merit and of unprecedented credit to their college. No greater reward can come of our work than for the senior classes of the years to come to accept this, our beginning, as their unfailing task each year to be left behind as another link in the history of S. G. T. C.

We leave our link in the chain of happy remembrances with the wish that our Alma Mater may continue to teach people to live more abundantly in a changing civilization; to draw upon the resources that are about them; and to acquire happiness by converting their spare time into hours of profitable leisure.

May the 1935 REFLECTOR reflect only that part of the past whose remembrance gives pleasure.



ORCHESTRAS

MR. WILLIAM DEAL, *Director*

SYMPHONY ORCHESTRA

TORRANCE BRADY, CHARLIE JOE MATHEWS	Solo Violins
CORA PAGI, DOUGLAS DURDEN	First Violins
GRACE CROMLEY, PAUL ROBERTSON	Second Violins
CONRAD WOMACK	Clarinet
DELMAS WHEELER, JOSH LANIER	Cornets
JAMES TOWNSEND, SHELBY MONROE	Saxophones
CARL COLLINS	Trombone
CLIFFORD DUKES	Drums
BOB SHILL	Bass
LILLIAN COX, S. D. DUNCAN, MRS. WILLIAM DEAL	Piano

JAZZ BAND

JOSH LANIER, DELMAS WHEELER	Trumpets
JAMES TOWNSEND, SHELBY MONROE, MR. DEAL	Saxophone and Clarinet
BOB SHILL	Bass
FRANK RUSHING	Piano
CARL COLLINS	Drums





C L U B S

REFLECTOR

1955



First Row: CLIFT, DEAL, MIDDLEBROOKS, HARPER, WOODARD, FENDER, ANDERSON, BELL
Second Row: WILKES, DEAL, QUATTLEBAUM, DeLOACH, CUMMINGS, LAMBRIGHT, RIGGS
Third Row: ESPY, GARRISON, ARNOLD, PAINE, WATSON, MAYS, MCKNEELY, FULLORD

DELTA SIGMA

OFFICERS

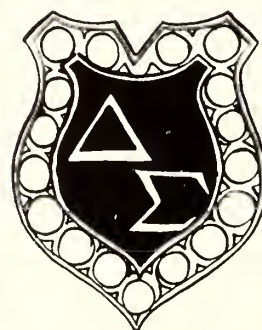
Fall

FRANK QUATTLEBAUM . . . President
CHENEY GRIFFIN . . . Vice-President
EUGENE BELL . . . Secretary
EARL RIGGS . . . Treasurer

Spring

EARL RIGGS . . . President
FRANK QUATTLEBAUM . . . Vice-President
CHARLES WOODARD . . . Secretary
ALBERT DEAL . . . Treasurer

MENZIE CUMMINGS . . . Sponsor
DR. R. J. H. DeLOACH . . . Faculty Advisor



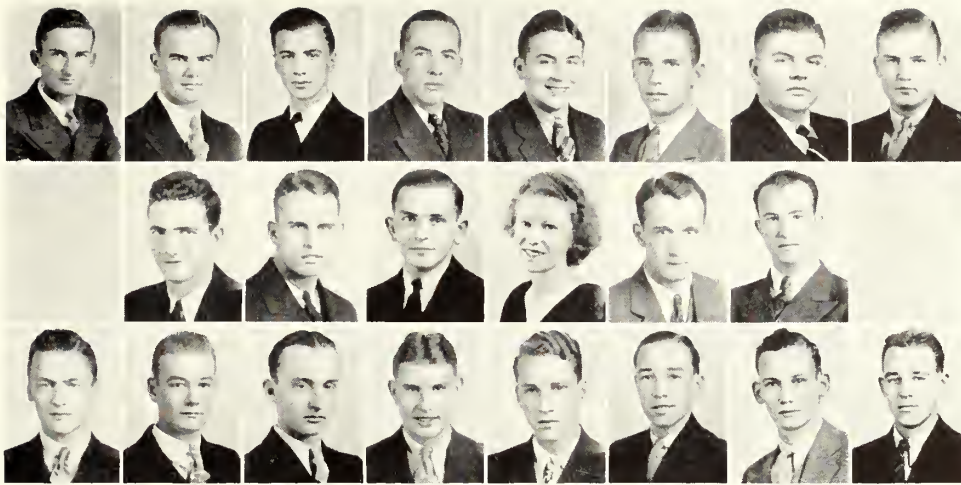
MEMBERS

FRANK QUATTLEBAUM	JOE LAMBRIGHT
WILSON WILKES	GEORGE CLIFT
EARL RIGGS	HOLDER WATSON
GORDON MAYS	JAMES DEAL
FRED PAIGI	EUGENE BELL
WAYNE MCKNEELY	ALLIN ARNOLD
ALBERT DEAL	CHENEY ANDERSON
CHARLES WOODARD	CHENEY GRIFFIN
CARLOS MIDDLEBROOKS	HAROLD MCKNEELY
ERNEST HARPER	WILFORD BOWIN
JAMES C. FENDER	GRADY McELMURRAY
DURWARD FULLORD	

HISTORY

FOUNDED: G. S. C. M., Tifton, Ga., 1929;
S. G. T. C., 1932
COLORS: Gold and Blue
FLOWER: Red Rose





First Row: STAPLETON, WARE, WOLFF, GWYN, McLEMORE, STEPHENS, HOOK, KENNEDY
 Second Row: PAFFORD, MUNCH, KENT, MATHEWS, POUND, MONROE
 Third Row: OLLIFF, MATHEWS, LANIER, WHEELER, HODGES, COLLINS, MINCEY, YOUNG

IOTA PI NU

OFFICERS

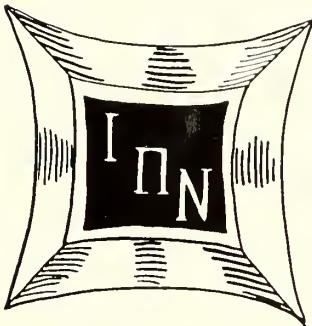
AUBREY PAFFORD . . . President

CHARLES MUNCH . . . Vice-President

LEONARD KENT . . . Secretary

BOB POUND . . . Treasurer

EVELYN MATHEWS . . . Sponsor



MEMBERS

BILLY GWYN	CARL COLLINS
LEONARD KENT	HUGH HODGES
BOBBIE McLEMORE	FRANK HOOK
SHELBY MONROE	EBB YOUNG
CHARLES MUNCH	WILLIAM KENNEDY
AUBREY PAFFORD	JOSH LANIER
BOB POUND	CHARLIE JOE MATHEWS
BOB SHELL	CHARLES OLLIFF
SIDNEY STAPLETON	BARTON STEPHENS
EDGAR WARE	DEEMAS WHEELER
CHARLES WOLFF	DERRICK MINCEY

HISTORY

FOUNDED: 1931

COLORS: Scarlet and Emerald

FLOWER: Poinsettia



REFLECTOR

1935



First Row: CROMLEY, SIMMONS, SIMMONS, REMINGTON, MINICK, CROMLEY, JOSEY
Second Row: McELVEEN, CONE, HODGES, JACKSON, DR. DESTLER, LASSETTER, YOUNG

L. T. C.

OFFICERS

GRACE CROMLEY	President
KATHRYN SIMMONS	Vice-President
LILLIAN SIMMONS	Secretary
SARAH REMINGTON	Treasurer
DR. C. M. DESTLER	Faculty Sponsor

MEMBERS

GRACE CROMLEY	BETTY JOSEY
KATHRYN SIMMONS	HELEN McELVEEN
LILLIAN SIMMONS	VICTORIA CONE
SARAH REMINGTON	MARY JANE HODGES
EVELYN MINICK	JULIA JACKSON
MARY CROMLEY	VERNA LASSETTER

NANCY YOUNG

HONORARY MEMBERS

HENRIETTA DOSTER	BEE SHAE
HAZEL COLEMAN	MARTHA SMITH
BILLIE OPIE	IRENE ENICKS
MARTHA ROBERTSON	MARTHA McELVEEN

MOTTO: "To strive, to seek, to find, and not to yield."

DUX DOMINA

OFFICERS

LOUISE QUANTOCK	<i>President</i>
MARTHA PIPPIN	<i>Vice-President</i>
ELOISE BEDINGFIELD	<i>Secretary</i>
LOTTIE ROUNTREE	<i>Treasurer</i>
KATHERINE DONOVAN	<i>Chaplain</i>
MR. AND MRS. FIELDING RUSSELL	<i>Faculty Sponsors</i>
FIELDING RUSSELL, JR.	<i>Mascot</i>

MEMBERS

ELOISE BEDINGFIELD	ALICE HILL
NEWELLE DELOACH	MARTHA PIPPIN
KATHERINE DONOVAN	LOTTIE ROUNTREE
FAY FOY	LOUISE QUANTOCK
MELBA HARVEY	MILDRED ZIEGLER

"Leading Ladies"

COLORS: Gold and White.

MOTTO: "To lead rather than to be led."



First Row: BEDINGFIELD, DELOACH, DONOVAN, FOY, HARVEY, MR. RUSSELL
Second Row: LITTLE FIELDING, MRS. RUSSELL, HILL, PIPPIN, ROUNTREE, QUANTOCK, ZIEGLER

REFLECTOR

1935



First Row: BRINSON, DAVIS, OWENS, GRAHAM

Second Row: GRAY, MINCEY, HICKLY, CONE

Third Row: AKINS, MRS. DEAL, MR. DEAL

EPICUREANS

OFFICERS

SARA BRINSON *President*

MARY DAVIS *Vice-President*

MARGARET OWENS *Secretary and Treasurer*

ELOISE GRAHAM *Chaplain*

MR. AND MRS. WILLIAM DEAL *Faculty Sponsors*

MEMBERS

EMILY AKINS

FRANCES CONE

LAURA HICKLY

ELOISE MINCEY

BARBARA GRAY

ELOISE GRAHAM

MARGARET OWENS

MARY DAVIS

SARA BRINSON

MOTTO: "Eat, drink, and be merry."

BACHELORS CLUB

OFFICERS

LEONARD KENT *President*
 BILL STEWART *Vice-President*
 RUFUS McDUFFIE *Secretary*
 J. D. PURVIS *Treasurer*

MISS MARIE WOOD, MISS RUTH BOLTON *Faculty Sponsors*

BACHELORS

GEORGE CARTER
 INMAN CHAMBLESS
 S. D. DUNCAN
 ALTON ELLIS
 WILLIAM GWYN
 AL HENDERSON
 LEONARD KENT
 HOWELL MARTIN

RUFUS McDUFFIE
 MARVIN MCKNEELY
 SHILBY MONROE
 CHARLES MUNCH
 AUBREY PAFFORD
 J. D. PURVIS
 TALMADGE ROBERTS

ALTON SETTLE
 MARVIN SMITH
 SIDNEY STAPLETON
 BILL STEWART
 JAMES TOWNSEND
 EDGAR WARE
 CHARLES WOLFE
 JIM WRINKLE

HISTORY

FOUNDED: 1928

COLORS: Green and White.

MOTTO: "Beware of Women."

FLOWER: Bachelor's Button.



First Row: KENT, STEWART, PURVIS, McDUFFIE, MISS BOLTON, MISS WOOD, STAPLETON

Second Row: WRINKLE, SMITH, MUNCH, WARE, DUNCAN, PAFFORD

Third Row: MONROE, ROBERTS, ELLIS, MARTIN, SETTLE, CHAMBLESS

Fourth Row: TOWNSEND, WOLFE, MCKNEELY, HENDERSON, GWYN, CARTER

REFLECTOR

1935

D. L. D.

OFFICERS

TORRANCE BRADY *President*

FRANCES HERRINGTON *Vice-President*

MABLE ROCKER *Secretary*

KATHRYN YLOMANS *Treasurer*

MR. JAY B. WISTCOTT *Faculty Sponsor*

MEMBERS

TORRANCE BRADY

FRANCES HERRINGTON

MABLE ROCKER

KATHRYN YLOMANS

EVILYN CHERRY

CORNELIA LAND

IONI GILLIAM

ANNA CODY

MAYO CODY

ETHEL MAE BYRD

VIRGINIA EDENFIELD

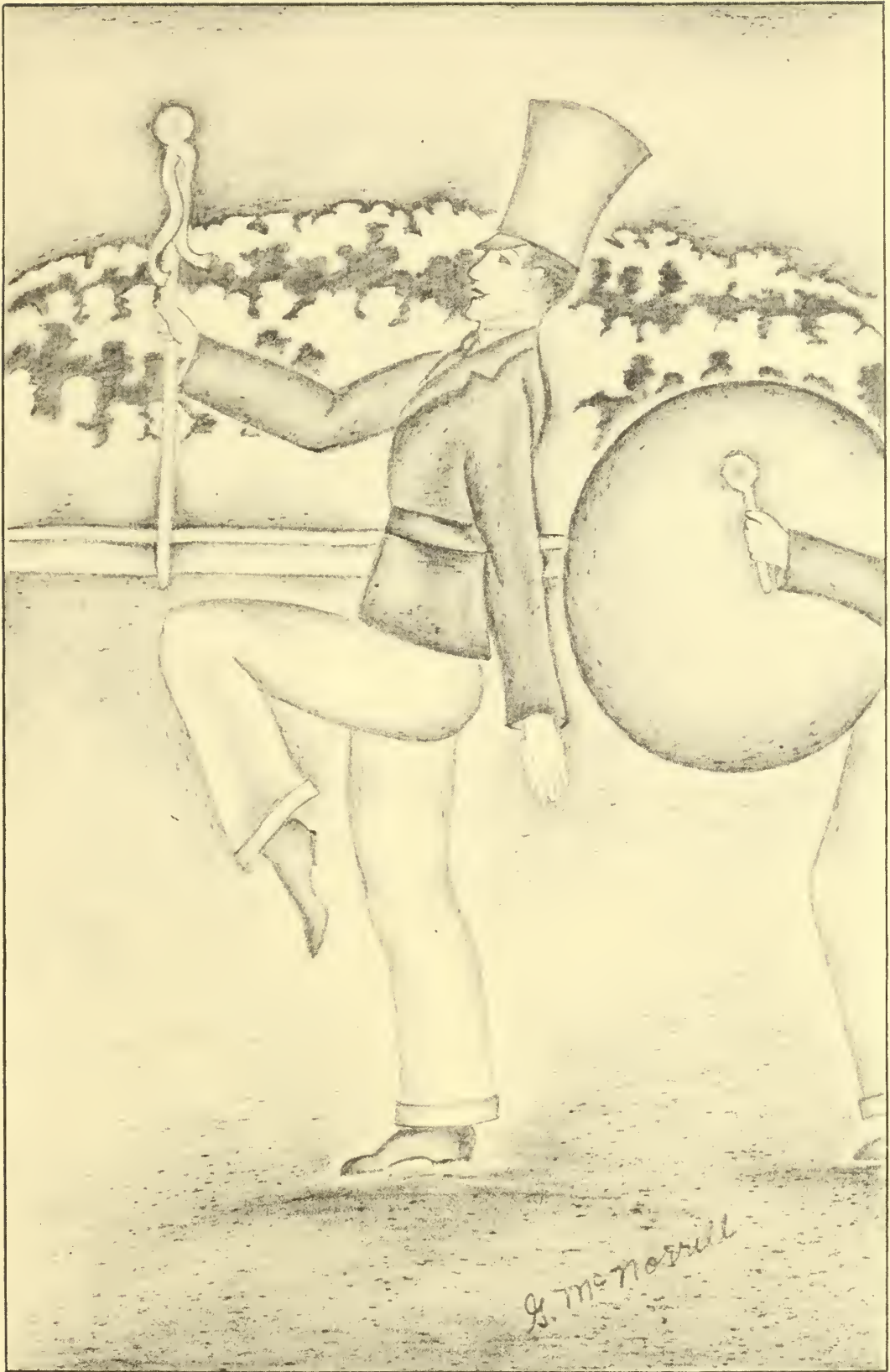
MAURINE HUTCHINSON

MOTTO: "A good time in a good way."

FLOWER: Old Maid.

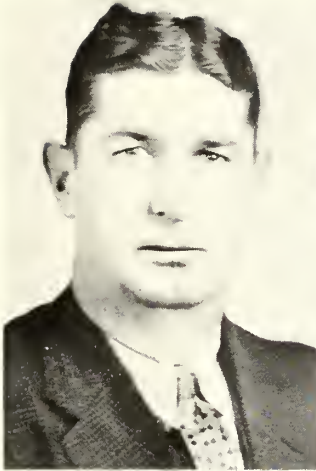


First Row: BRADY, HERRINGTON, ROCKER, YLOMANS, CHERRY, LAND
Second Row: GILLIAM, CODY, CODY, BYRD, MR. WISTCOTT, EDENFIELD, HUTCHINSON



ATHLETICS

ATHLETIC DIRECTORS



COACH SMITH



MISS LANE



MR. DONALDSON

BYRON L. SMITH

Director of Physical Education for Men

BYRON L. "CROOK" SMITH, who was Mercer's first four-letter man, has been head coach at South Georgia Teachers College since the fall of 1929. He came to the College from Dalton, Georgia, where he was coach in the city high school.

Coach Smith received his early education in Tennessee, having attended Lincoln High School and Bryson College. He attended Mercer University back in the days when the "Bears" inspired terror in Southern football stadiums. Twice during his college career, he was voted Mercer's best athlete. As a member of the All-Southern football, baseball, and basket-ball teams "Crook" added new laurels to his enviable athletic record. He received his B.S. degree from the above institution in 1925. Since that time, he has won his master's degree from the University of Michigan.

The Athletic Association has made wonderful strides under his coaching. Winning teams, fair play, and a fine school spirit have been his contributions.

CARO LANE

Director of Physical Education for Women

MISS CARO LANE came to the College from the State Department of Education where she was Assistant Supervisor of Elementary Schools. Since 1932, she has been supervisor and director of physical education for women.

Miss Lane not only knows everybody worth knowing, but she is a unique character herself. Her influence is exerted in many ways on the campus. Besides directing the activities of the Women's Athletic Association, she is one of the sponsors of the local Y. W. C. A. She enjoys her job of moulding the physical education side of Georgia's future teachers.

G. S. C. W. granted her undergraduate degree. She has a master's degree from Peabody College. Miss Lane has attended summer schools at the University of Virginia, University of Wisconsin, Harvard, and Columbia. In addition to her many years with the State Department of Education, Miss Caro has had several years of successful teaching experience in Baldwin County.

ROBERT F. DONALDSON, JR.

Director of the Athletic Association

ROBERT "BOB" DONALDSON is a product of T. C.'s home town, Statesboro. After his graduation from Statesboro High School in 1923, he entered the University of Georgia where he received his A.B. degree in 1927. In the summer of 1934, he was awarded a master's degree from Columbia University.

"Bob" is the man about school. Since 1928 he has been assistant in the English Department and instructor in journalism. In addition to his duties as a faculty member, he is the school's publicity manager, faculty advisor for college publications, and newspaper reporter.

His greatest interest, however, is in athletics. For the past several years, he has been Faculty Director of the Athletic Association.

FOOTBALL

B. L. SMITH

JAMES DEAL

Coach

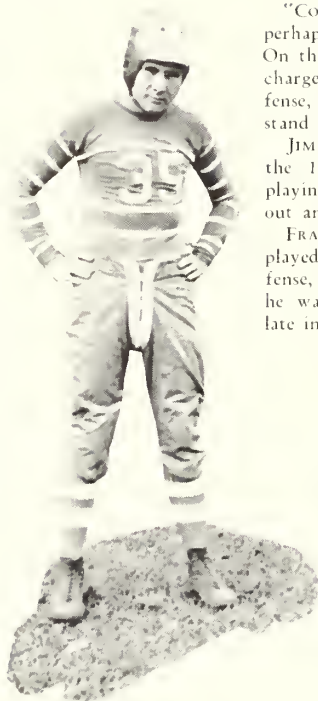
Manager

THE MEN ON THE TEAM

"COONEY" RIGGS—(Center). "Cooney" was perhaps the best center in the state last season. On the offense, he was an accurate snapper, a fast charger, and an excellent blocker. On the defense, his uncanny diagnosis of plays made him stand out in the Teachers' line.

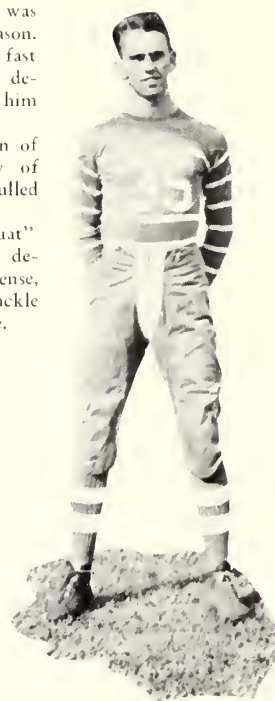
JIM CHERRY—(Guard). Cherry, a veteran of the 1933 team, continued the fine quality of playing of the year before. A fast man, he pulled out and led the interference on many plays.

FRANK QUATTILBAUM—(Guard). "Quat" played his last season for the Blue Tide. On defense, he was steady as a rock. On the offense, he was an excellent charger. Shifted to tackle late in the season, he performed capably there.



GEORGE CLIEFF—(Tackle). Starting the season at the end position, but soon being shifted to tackle, Cliett proved to be a hard-working, dependable player. His work on defense in particular was excellent.

CARLOS MIDDLEBROOKS—(End). Middlebrooks proved to be one of the "finds" of the 1934 season. Starting



only "average," he soon developed into one of the best ends ever to play for the Teachers.

EUGENE DAVIS—(End). Davis, a new man, proved to be very dependable, aggressive, and effective when shifted from guard to end. Very light for his position, he turned back the opposition time and again for losses.



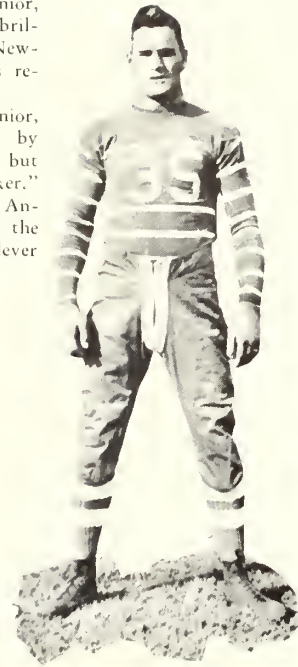
FOOTBALL



CHARLIE MUNCH—(End). Munch, a senior, climaxed his college career by playing brilliantly in the Thanksgiving classic with Newberry. Munch was one of the best pass receivers ever to represent the Tide.

MARVIN SMITH—(Guard). Also a senior, Smith ended his college football career by having his best year. He was rather light, but fast, and was a good "down-the-field blocker."

COHEN ANDERSON—(Quarterback). Anderson was one of the hardest fighters on the team. He was a good passer and a fast, clever runner. He played well as a blocker.



J. C. HINES—(Halfback). Hines, a veteran of the 1933 team, again proved to be one of the shiftiest runners ever to perform on a local gridiron. An accurate passing aided him considerably.

JOE LAMBRIGHT—(Halfback). Dodie developed into a fine back during the season. A cool, steady player, he was an important cog in the machine.



DURWARD FULFORD—(Fullback). Fulford eclipsed his brilliant record of 1933 this year. A bulwark on defense, a fast-charging line smasher, and excellent open-field runner, he had all the requisites that make a good fullback.

EUGENE BELL—(Quarterback). Having served as a substitute for a year, Bell developed into a capable and dependable ball-player.



REFLECTOR

1935

FOOTBALL



HEMANS OLIVER—(Center). "Goat," a new man, showed plenty of fight and ability. He will be counted on for better things next year.

RICHARD SAUNDERS—(End). Having had a year's experience as a substitute, Saunders was developing into a fine end. He showed plenty of fighting ability.

ALLEN ARNOLD—(Tackle). Although light for a tackle, Arnold made a fine record as a reserve man this season. He played a good defensive game.

CARLTON FENDLER—(Guard). Fender showed up unusually well the latter part of the season. He will be counted on next year.

CHARLES PAINE—(Halfback). He is a fighting reserve back, who only needs a little more experience and weight to make a real star.

CHARLES WOODARD—(Quarterback). Woodard is another new man, but he showed himself adept at running a football team. He is a hard fighter.

GEORGE ABELSON—(Fullback). Converted from a tackle position into the reserve fullback post, Abelson proved to be a steady man and a good passer.

THE 1934-5 SEASON

Opponent	Place	Date	T. C.'s Score	Opp. Score
Alabama State				
Teachers College				
Troy, Ala.,	Sept. 28	. . .	13	19
Brewton-Parker				
Institute				
Mt. Vernon,	Oct. 5	. . .	0	6
University of				
Tampa				
Statesboro,	Oct. 12	. . .	21	13
Stetson				
University				
Deland, Fla.,	Oct. 19	. . .	0	19
Appalachian State				
Teachers College				
Statesboro,	Oct. 26	. . .	22	13
Middle Georgia				
College				
Statesboro,	Nov. 2	. . .	6	0
South Georgia				
State College				
Douglas,	Nov. 9	. . .	19	0
Georgia Military				
College				
Milledgeville,	Nov. 16	. . .	0	19
Newberry				
College				
Statesboro,	Nov. 29	. . .	20	21
TOTAL	. . .		101	110



First Row: HINES, DuBOSE, STEWART, PURVIS, WRINKLE
Second Row: COACH SMITH, WILKES, PAFFORD, YOUSMANS, MIDDLEBROOKS, DONALDSON, RIGGS

BASKET-BALL

LINE-UP

First Team	Position	Second Team
EBB YOUSMANS	Center	GEORGE DONALDSON
CARLOS MIDDLEBROOKS	Right Forward	AUBRIY PAFFORD
J. C. HINES	Left Forward	J. D. PURVIS
BILL STEWART	Right Guard	WILSON WILKES
JIM WRINKLE	Left Guard	HOBSON DuBOSE

THE 1935 SEASON

Opponent	Place	Teachers	Opp. Score
MERCER	Statesboro	49	33
ADEL ATHLETIC CLUB	Adel	42	22
ATLANTA Y. M. C. A.	Atlanta	35	36
GEORGIA MILITARY COLLEGE	Statesboro	50	34
NEW YORK CELTICS	Statesboro	46	52
J. E. A.	Savannah	57	41
MIDDLE GEORGIA COLLEGE	Statesboro	63	33
SOUTH GEORGIA STATE COLLEGE	Douglas	46	51
AUGUSTA Y. M. C. A.	Augusta	35	10
CATHOLIC CLUB (SAVANNAH)	Statesboro	49	15
MIDDLE GEORGIA COLLEGE	Cochran	38	26
GEORGIA MILITARY COLLEGE	Milledgeville	44	29
CHARLESTON COLLEGE	Statesboro	52	32
DOUGLAS	Statesboro	50	39
DOUGLAS	Statesboro	41	32
J. E. A.	Statesboro	41	32
CHARLESTON COLLEGE	Charleston	34	30
UNIVERSITY OF GEORGIA	Statesboro	40	34



First Row: Woods, DuBose, Ratley, Spiars, Martin
 Second Row: McKneely, Wilkes, Thomas, Griffin, Hines
 Third Row: Coach Smith, Stein, Arnold, Chambliss, Shippey, Ramsey

BASEBALL

B. L. SMITH Coach
 TALMADGE RAMSEY Manager

LINE-UP

GENE WOODS First Base	HOWELL MARTIN Catcher
HOBSON DuBOSE Second Base	"SON" THOMAS Pitcher
J. C. HINES Shortstop	CHENEY GRIFFIN Pitcher
WILKINS SMITH Third Base	JACK RATLEY Pitcher
MELTON SPIARS Left Field	WILSON WILKES Catcher
HAROLD McKNEELY Center Field	LAWRENCE SHIPPEY Third Base
JOE STEIN Right Field	INMAN CHAMBLESS Second Base
ALLIN ARNOLD First Base	

ALTHOUGH COACH SMITH had only two "lettermen" from the 1933 squad, he moulded a fighting, hustling team that broke even against some very strong competition. At times the team played brilliant, unbeatable baseball.

The 1934 team seemed to have a "road jinx," losing eight of ten games played away from home. On two separate road trips, the Blue Tide lost four consecutive games. At home the Teachers fared much better, winning eight of ten games and making the season's record stand—ten victories, ten defeats.

Hines, McKneely, and Stein led the club in hitting. All three clouted the opposing hurlers for better than a .300 percentage. McKneely was the "home-run king."

BOXING

FIELDING D. RUSSELL *Coach*

JOHN HENSLEY *Manager*

BOXING, THE NEWEST SPORT at T. C., is one of the most popular. Coach Russell, with only three veterans from last year as a nucleus, formed quite a strong team. Facing the toughest kind of opposition, the team won only one match out of four. The two matches with G. M. C. were divided with each team winning at home—four bouts to three. The Teachers lost both matches to a superior University of Georgia team.

Buster Deal, Marvin Smith, Dudley Smith, Bill Garrison, and Charles Woodard were the most consistent winners for the Teachers.

MEMBERS OF THE SQUAD

SAM JOSSEY
FRANKLIN PARKER
BUSTER DEAL
KIRKLEY PAINE
HOWARD WATERS
GERALD BACON
MARVIN SMITH
WALTON CROUCH
DUDLEY SMITH

EARL RIGGS
INMAN CHAMBLESS
RICHARD SAUNDERS
JOHN HENSLEY
LEROY ROUGHTON
GEORGE KINZY
SPURGEON EDWARDS
JOHN EVANS
WILLIAM GARRISON

CLIFFORD GROOVER



First Row: JOSSEY, PARKER, DEAL, PAINE, WATERS, BACON
Second Row: SMITH, CROUCH, SMITH, RIGGS, CHAMBLESS, SAUNDERS
Third Row: HENSLEY, ROUGHTON, KINZY, EDWARDS, COACH RUSSELL, EVANS, GARRISON, GROOVER



First Row: GRAHAM, ROCKER, BURNS, BLITCH, ROZIER
 Second Row: CONE, MISS LANE, BRADY
 Third Row: HODGES, GREENE, YEOMANS, OLLIFF, YOUNG, EDENFIELD

THE WOMEN'S ATHLETIC ASSOCIATION

OFFICERS OF THE COUNCIL

VICTORIA CONE	<i>President</i>
MARY MARGARET BLITCH	<i>Vice-President</i>
KATHERINE YEOMANS	<i>Secretary and Treasurer</i>
HELEN OLLIFF	<i>Publicity</i>
MISS CARO LANE	<i>Faculty Advisor</i>

MEMBERS OF THE COUNCIL

ELIZABETH BURNS	<i>Soccer</i>	NANCY YOUNG	<i>Swimming</i>
MARY JANE HODGES	<i>Basket-ball</i>	ELOISE GRAHAM	<i>Dancing</i>
MABLE ROCKER	<i>Volley-ball</i>	JEWEL GREENE	<i>Health</i>
GWENDOLYN DEKLE	<i>Baseball</i>	LOUISE ROZIER	<i>Athletic Tests</i>
VIRGINIA EDENFIELD	<i>Tennis</i>	TORRANCE BRADY	<i>Mass Games</i>

THE WOMEN'S ATHLETIC ASSOCIATION has sponsored several worthwhile projects during the year 1934-35. In all games, the end desired was the participation of as many students as possible. This met with great success.

During the spring the W. A. A. sponsored a stunt night, the proceeds from which were used to buy equipment to lend out to the students.

The high point of the year was the Georgia Athletic Conference for College Women which was held here the first week in March. Representatives from fifteen Georgia colleges attended.

Group Activities Sponsored
by W.A.A.



Golf



Tennis



Life Saving



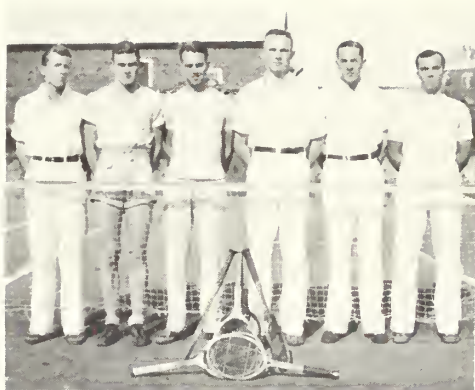
Swimming



Basketball



Soccer



Left to Right: WRINKLE, WILKES, MUNCH, SMITH, GWYN,
PITCHFORD



Left to Right: HENDERSON, SHELL, DAVIS, WRINKLE,
MARTIN

TENNIS

MORE INTEREST was manifested in tennis in the season of 1934 than in any previous season. A tournament, conducted by Coach Hanner to determine the selections for the team, attracted a great number of players. Wilkins Smith defeated Charlie Munch in the finals to win the trophy. Smith, incidentally, had already won the school championship for two consecutive years.

Although the team did not have the brilliant players of the year before, it more than made up in balance and steadiness for what was lost in sheer brilliance. Munch, Wolff, Hodges, Kimball, and Smith made up the team. The season's scores were as follows:

	<i>T. C.</i>	<i>Opponents</i>
South Georgia State College at Douglas	4	1
Brewton-Parker Institute at Mt. Vernon	4	1
South Georgia State College at Statesboro	3	2
Brewton-Parker Institute at Statesboro	5	0

GOLF

GOLF WAS A NEW SPORT at Teachers College in 1934. No team was formed since the course was constructed too late to be used for intercollegiate competition. The new course was laid out on the college property, near the main campus, at a cost of \$10,000.

Professor Witcher taught those who desired to play, and formed the rudiments of a team. However, no actual competition was engaged in. The team did go to Jesup for an invitation tournament, where Mr. Witcher scored low and three members of the Teachers team followed him in rank. Those making the trip were Wrinkle, Shell, Stapleton, Hendrix, Mr. Russell, and Mr. Witcher.

This year the course has been changed and improved with the result that more interest is being taken in golf. A team is to be formed early in the spring and intercollegiate matches played.

T CLUB

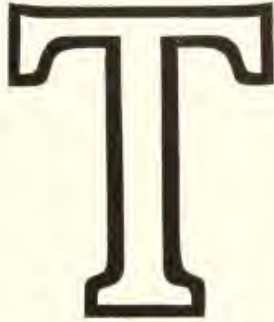
COACHES

B. L. SMITH
Football, Basket-ball, Baseball

F. D. RUSSELL
Boxing

W. S. HANNER
Golf, Tennis

J. B. WESTCOTT
Track



EDITH TYSON, *Sponsor*

OFFICERS

"COONLY" RIGGS
President

CHARLIE MUNCH
Vice-President

"DODIE" LAMBRIGHT
Secretary and Treasurer

"HUB" QUATTLEBAUM
Chaplain

ROLL

GEORGE ABELSON
COHEN ANDERSON
ALLEN ARNOLD
GENE BELL
J. D. CHERRY
INMAN CHAMBLESS
GEORGE CLIETT
GINI DAVIS
ALBERT DIAL
JAMES DEAL
GEORGE DONALDSON
HOBSON DUBOSE

CARLTON FINDER
DURWARD FULLFORD
BILL GARRISON
J. C. HINES
JOE LAMBRIGHT
HOWELL MARTIN
CARLOS MIDDLEBROOKS
CHARLES MUNCH
HELMANS OLIVER
AUBREY PALFORD
CHARLES PAINL
J. D. PURVIS

FRANK QUATTLEBAUM
JACK RAITLY
EARL RIGGS
RICHARD SAUNDERS
ALTON SEITLI
MARVIN SMITH
JOE STEIN
BILL STEWART
WILSON WILKES
CHARLES WOODARD
JIM WRINKLE
EBB YLGMANS



MERRILY WE ROLL ALONG

(Continued from Page 40)

- DECEMBER 10. "Mary, Mary, Quite Contrary" presented as first lyceum number.
 DECEMBER 11. Miss Veazey has to show Student Council cause for exceeding speed, pardon me, time limit at her party.
 DECEMBER 12. "Goat" and his Freshmen put Freshman banquet over.
 DECEMBER 17. Midnite oil burns merrily as final exams heave into port. Statistics: Number staying up all night—Many; Number fainting—A few timid souls; Number cases of hysterics—You count 'em!
 DECEMBER 20. In midst of it all, Teachers take Mercer 51-39 in opening game of cage ball season.
 DECEMBER 21. Christmas holidays begin. None killed, but many injured in exodus from campus. O. K. Mr. Santa Claus!

"January grey is here . . ."

- JANUARY 2. Students arrive and begin registration for new term. Can they take it?
 JANUARY 3. Miss Sophie makes first mustard plaster of season.
 JANUARY 5. We get revenge on G. M. C. to the tune of 50-34.
 JANUARY 8. Scoop! ! George and Ione fail to make daily trip up the middle aisle.
 JANUARY 11. "Crook" Smith makes a million when Celtics nose out Teachers 42-36 before a crowd of 2,000 spectators. Interesting sidelight—Mrs. Smith leaving when Crook gets a sale for her chair.
 JANUARY 12. Coach goes on the gold standard and gives team a supper at the Norris.
 JANUARY 13. Coach collapses as wealth proves too much for him.
 JANUARY 15. Again Teachers come through! T. C. 57—J. E. A. 41.
 JANUARY 18. T. C. broadcasts from W. S. M., Nashville. "Oozie" Deal confides to radio audience that "Music hath charms to soothe the savage breast."
 JANUARY 19. Teachers "de luxe" it over to Cochran to win 63-33.
 JANUARY 22. Really, boys and girls, we can't have cheek dancing!
 JANUARY 24. Teachers bring back alibis, and the short end of the score from Douglas when they go under 51-46.
 JANUARY 25. "Punchie" Deal scores a knockout when University of Georgia boxing team comes down to see us.
 JANUARY 26. Dux Domina socialize in training school.
 JANUARY 30. T. C. joins the rest of the U. S. A. in celebrating President Roosevelt's birthday.

*"So, in a single night,
 Fair February comes."*

- FEBRUARY 1. Teachers win boxing match from G. M. C. 4-3.
 FEBRUARY 7. Iota Pi Nus entertain in town without "collitch" talent.
 FEBRUARY 9. Boxing team loses to U. of Ga. in Athens.
 FEBRUARY 14. Tender love missives are in the air, and so is sweet romance. Tweet, tweet—
 FEBRUARY 16. D. S.'s give co-eds a break with dance at Women's Club. The first time out for the girls this term.
 FEBRUARY 20. Monroe, Quattlebaum, and others take prominent part in 4-H Club program.
 FEBRUARY 22. George's birthday. George Who? Why George Washington, of course!
 FEBRUARY 25. Elmer Brewton announces that the three outstanding girls on the campus are Newelle DeLoach, Evelyn Minick, Barbara Gray. "Little" Mincey tries to end it all.
 FEBRUARY 27. Just one more day in February.
 FEBRUARY 28. And here it is. Another month gone—just like that!

". . . In March when shaggy buds are shorn."

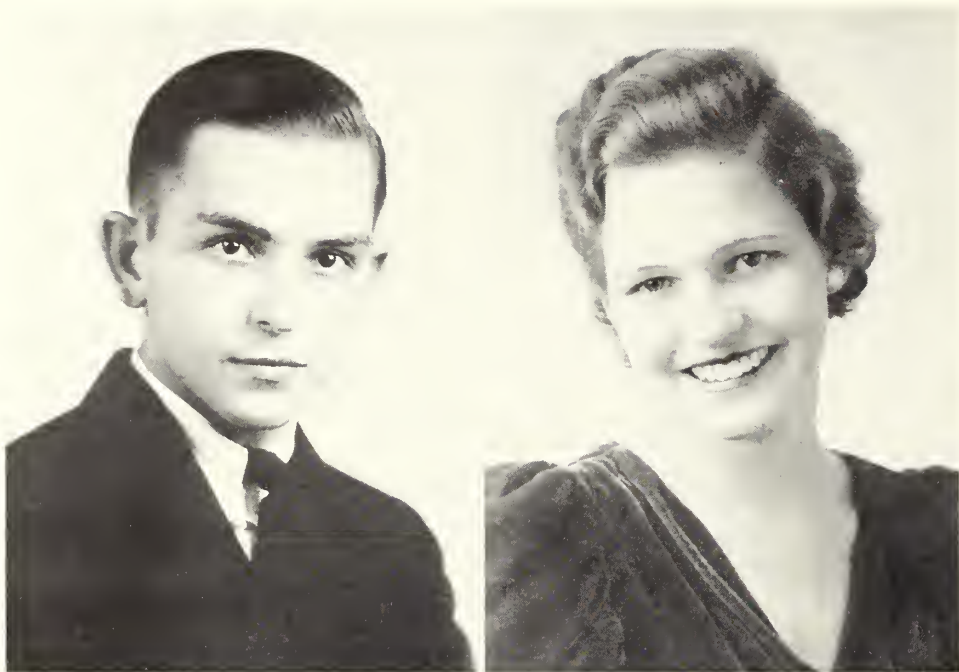
- MARCH 1. Attractive delegates to Women's Athletic Association Conference arrive and have the situation well in hand.
 MARCH 2. Louis Untermyer lectures. W. A. A. entertain visitors with dance after program.
 MARCH 3. Girls are gone but by no means forgotten.
 MARCH 8 and 9. Georgia Progress Conference.
 MARCH 11. Rondies on the increase as house parties approach.
 MARCH 13. Kent announces that he is going on the house party.
 MARCH 14. T. C. installs "Observatory Hill." Thanks to Uncle Sam.
 MARCH 15. Debating team meets University of Florida Frosh.
 MARCH 20. Spring Holidays! Everybody's fancy turns to St. Simon's and Yellow Bluff. P. S. Kent went??????
 MARCH 25. And so, begins a new term.

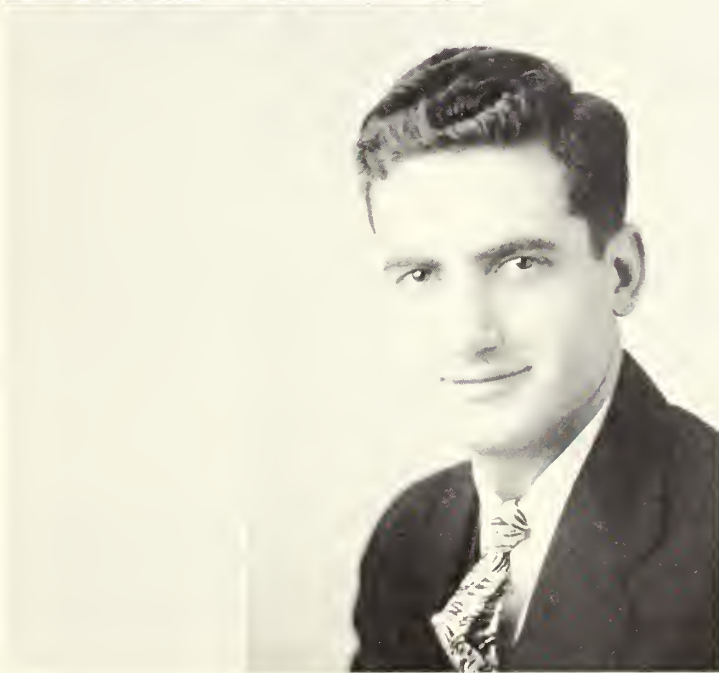
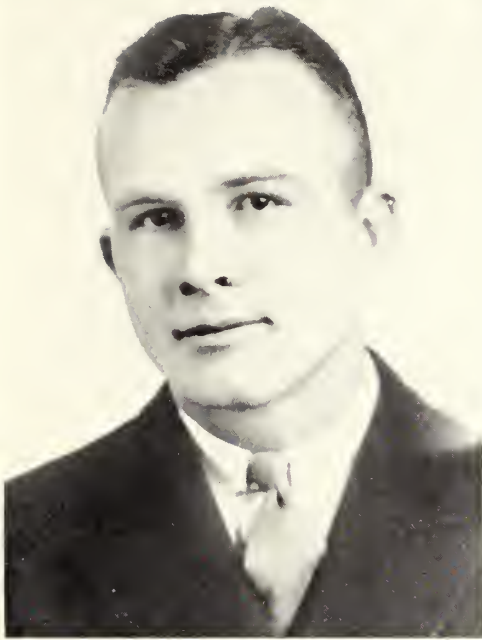
(Continued on Page 124)



FEATURES









COPPER, PEOPLE, AND POETRY

Everything Photographic.

The Story of Philosophy.

*Airplanes and the Savannah
Morning News.*

From Butter and Eggs to Poetry.

Y. M. C. A. Secretary.

Prizes will be Distributed.

*Peanuts, Peanuts, Everywhere
Peanuts
Or
Three Saints in Two Colors.*

Ruby.

*20 Million Russians. Could they
be wrong?*

Covers Dixie Like the Dew.

MAY DAY—Queen and Court.



Trainbearer.



As the Show Goes On.

Ye Lad and Lassies Gay.



Laboratory School.



Little Bluetide.

Activity—Stimnlation and
Motivation.



Mr. and Mrs. Downs.



What? No Sea!





EQUIVALENTS

*She Was Lost in a Fog When
He Left.*

*If We Were Clever We Wouldn't
Say the Long and Short of It.*

Slightly Elevated.

In the Rongh.

Glory, Glory, to Old T. C.

K. O. Smith.

*And It's First Down for the
Teachers.*

Bill.

Equivalent.

His Understudy.

*Rab! Rab! Rab! And they're not
the girls from Institute.*

Among Those Present.



CAMPUS LIFE

The Young Marooner.

*One of The Things They've
Learned in College.*

*The Wrong Way to Say
Good-night.*

*I'm Alone Because I
Love You.*

Crook and Susie.

Aw! Rats!

A Dog's Life.

*Now They're Big Shots
in the "Frat."*

*My Shadow—or The
Editorial "We."*

Rescue.





ALMA, HERSELF.



*Cecile, Emelie, Annette,
Yvonne, Marie.*

F. D. R., Jr.

The Year of the Big Snow.



*Minnie Came and Minnie Went
and
He Came From a Fine Family.*

Little Gene.



Washingtons and Roosevelts.

Miss Veazey—not mad just hurt.

*Snow Fell on Teachers College
Campus.*



Goin' to Heaven on a Mule.



ADVERTISEMENT S

We Are Enthusiastic
Supporters of the
Development Program
of
The South Georgia Teachers College



CHAMBER OF COMMERCE
STATESBORO, GEORGIA

"Where there's Beauty, McCollum takes it
Where there's none, McCollum makes it"

»
»

PHOTO SHOP

EVERYTHING PHOTOGRAPHIC

»
»

ALBANY - - - - - GEORGIA

DONALDSON - SMITH
CLOTHING COMPANY

1 1 1

"Outfitters for Men and Boys"

BULLOCH DRUG CO.

1 1 1

PRESCRIPTIONS
A SPECIALTY

JACOB'S
CANDIES

TOILET
ARTICLES

COMPLIMENTS OF 1 1 1

AMERICAN
AMOCO
GAS

A. B. McDougald, *Agent*

W. C. AKINS SON

HARDWARE

1 1 1

GROCERIES

"See Us Before You Buy"

CITY DRUG COMPANY

1 1 1

PHONE 37

STATESBORO

GEORGIA

Meet and Eat at . . .

THE TEA POT GRILLE

STATESBORO, GEORGIA

ELIZABETH DeLOACH NELLE DeLOACH

Sandwiches

Drinks

Dinners

Phone 56

Coffee

COMPLIMENTS OF 1 1 1

The Luggage Shop
Livingston Drug Company

R. E. Van Buran

R. C. Williams Georgia Corp.

D. T. Nunn

SAVANNAH

GEORGIA

Compliments of . . .

B. KARPFF, Inc.

107 Broughton, West

SAVANNAH

GEORGIA

Compliments of . . .

Mrs. Cecil Brannen

28-30 West Main Street

Phone 239

Statesboro, Ga.

T E A C H E R S

We solicit your patronage

*We Carry a Complete Line
of First Quality Merchandise*

And extend a cordial welcome to visit
our store.

United 5c to \$5.00 Store

C. L. MARTIN, Manager

STATESBORO

GEORGIA

HINTON BOOTH

Attorney at Law

1 Courtland Street

STATESBORO

GEORGIA

W. H. ELLIS CO.

Druggist

✓ ✓ ✓

Y O U R
D R U G G I S T

STATESBORO

GEORGIA

THE FAIR STORE

L. SELIGMAN, Prop.

"Fair and Square"

DRY GOODS ✓ SHOES

Ladies' and Men's Ready-to-Wear

"Newest Styles All the While"

Statesboro Undertaking Co.

Funeral Directors

Ambulance Service Lady Assistant

DAY PHONE
340

NIGHT PHONE
415

STATESBORO

GEORGIA

BULLOCH TIMES

✓ ✓ ✓

' ' Y O U R H O M E
N E W S P A P E R ' '

H. W. SMITH

✓ ✓ ✓

S T A T E S B O R O ' S
L E A D I N G J E W E L E R

E. C. OLIVER COMPANY

✓ ✓ ✓

*Outfitters for
Men, Women and Children*

STATESBORO

GEORGIA

1920

»

»

»

»

»

1935

✂

✂

✂

✂

ALFRED DORMAN CO.

W H O L E S A L E R S

✂

✂

✂

✂

STATESBORO - SYLVANIA - JESUP - SWAINSBORO

THE SOUTH GEORGIA
TEACHERS COLLEGE



SERVES MONARCH FINER FOODS

Compliments of

STATE THEATRE

10 WEST MAIN STREET

DRINK



Coca-Cola
TRADE MARK REGISTERED



IN BOTTLES

COMPLIMENTS

OF

SEA ISLAND BANK

AN INVITATION . . .

When you come to Savannah Globe invites you to view the new spring footwear now on display for your approval.

Three floors of fine footwear for all the family. Styles were never more captivating—complete selection of models for every occasion.

"No One Ever Regretted Buying Globe Quality"

Globe Shoe Company

17 EAST BROUGHTON STREET

GRADUATES OF '35 . . .

HEALTH, Fortune and Happiness are the three great Magi of Life. May their gifts and visits brighten your future years.

May you be prosperous and may the long looked for prosperous times appear and cheer your days.

Dinkins-Davidson Hardware Co.

*Wholesale Hardware
Manufacturers Distributors*

A T L A N T A

IN APPRECIATION OF

The
South Georgia Teachers
College

‘ ‘ ‘

JOHN EVERETT
COMPANY

GROCERIES

‘ ‘ ‘

WE DELIVER PHONE 26
STATESBORO ‘ GEORGIA

The Best Dressed Men

‘ Wear ‘

SCHWOBILT
CLOTHES

‘ ‘ ‘

THE SCHWOB
COMPANY

“ALL OVER THE SOUTH”

MORGANS, INC.

Wholesale
Retail

‘ ‘ ‘

SAVANNAH, GA.

111 West Broad Street

WAGONS ‘ HARNESS
OLIVER FARM IMPLEMENTS

Cole Planters, Planet Jr. Tools
Deming

Pumps, Pipe and Fittings, Roofing,
Paints, Oils, Varnish, Wall Paper,
Simonds Saws, Goodyear Belting,
Log Carts, Wagon Repairs

COMPLIMENTS

‘ OF ‘

B. B. MORRIS & CO.

‘ ‘ ‘

PHONE
1 3 2

20 West Main Street

STATESBORO ‘ GEORGIA

F U R N I T U R E

Rugs ∙ Carpets ∙ Draperies

Interior Decorators

∙ ∙ ∙

Quality Combined with

Reasonable Prices

Is our bid for your business

∙ ∙ ∙

LINDSAY & MORGAN
COMPANY

SAVANNAH ∙ GEORGIA

T H E

COLLEGE PHARMACY

∙ ∙ ∙

"Where the Crowds Go"

∙ ∙ ∙

PRESCRIPTIONS

A SPECIALTY

Drugs ∙ Sundries ∙ Soda

PHONE 414

V 8



V 8

Beauty ∙ Comfort ∙ Speed
Economy

∙ ∙ ∙

A P R O V E N C A R

∙ ∙ ∙

S . W . L E W I S

STATESBORO ∙ GEORGIA

We Extend Our

Best Wishes

to the College

∙ ∙ ∙

BULLOCH COUNTY

BANK

STATESBORO ∙ GEORGIA

FRANKLIN DRUG
COMPANY

THE *Rexall* STORE

‘ ‘ ‘

"A Good Drug Store"

‘ ‘ ‘

Phone 2

STATESBORO

‘

GEORGIA

JAKE FINE, INC.

‘ ‘ ‘

Where Style, Quality and
Value Predominate

‘ ‘ ‘

STATESBORO

‘

GEORGIA

USE . . .

BIRDSEY'S

"It's the Best"

F L O U R

COMPLIMENTS

‘ OF ‘

HODGES - ATWELL
BAKERY

‘ ‘ ‘

STATESBORO

‘

GEORGIA

BEST WORK AT LOWEST PRICES

. . . SEE . . .

J. MILLER

Shoe and Harness Factory
33 West Main Street
STATESBORO, GEORGIA
PHONE 400

COMPLIMENTS OF ♣ ♣ ♣

**BRANNEN AND THAYER
MONUMENT CO.**

45 West Main Street
Phone 439
STATESBORO ♣ GEORGIA

D I P L O M A S

♣ ♣ ♣

CERTIFICATES, SHEET OR
BOOK FORM
COMMENCEMENT INVITATIONS
ENGRAVED
LETTERHEADS ♣ CARDS
ANNOUNCEMENTS
RESOLUTIONS

♣ ♣ ♣

**J. P. STEVENS
ENGRAVING CO.**

ATLANTA ♣ GEORGIA

Sporting and Athletic
Equipment

♣ ♣ ♣

**MARTIN - THOMPSON
COMPANY**

CHATTANOOGA, TENNESSEE

♣ ♣ ♣

Write for a Catalog

THE JONES COMPANY . . .

A complete store for men and boys of nation-
ally advertised brands of wearing apparel

THE JONES COMPANY

Kuppenheimer Good Clothes
SAVANNAH, GEORGIA

OLLIFF & SMITH

' ' G o o d T h i n g s t o E a t ' '

SINCE 1893



S C H O O L B O O K S

‘ and ‘

S C H O O L S U P P L I E S



Seeds for the Garden

Poultry Feed

Poultry Supplies

STATESBORO GEORGIA

C O M P L I M E N T S

‘ O F ‘

GEORGIA-CAROLINA DAIRIES

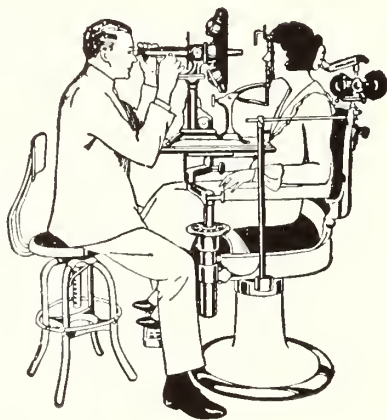
AUGUSTA, GEORGIA

‘ Makers of ‘

S A N C K E N ' S I C E C R E A M



Dr. Maxey E. Grimes, Optometrist



and Manufacturing Optician
Complete Diagnosis of the Eye



Separate Waiting Rooms for
White and Colored

Office Hours:
9 to 1
2 to 6



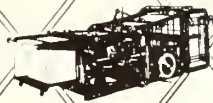
Sundays Only
by
Appointment

23 South Main St.

Phone 178

Statesboro, Ga.

PATRONIZE OUR ADVERTISERS



Complete
EQUIPMENT

A KNOWN FACTOR IN THE FORMULA
FOR A SUCCESSFUL ANNUAL IS

THE SERVICE OF

FOOTE & DAVIES COMPANY

WHERE EVERY DETAIL OF THE PROCESSES OF

CREATING • PLANNING • LAYOUT AND DESIGN

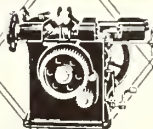
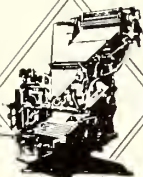
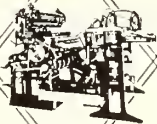
TYPESETTING • PRINTING • LITHOGRAPHY

AND BINDING IS DONE IN ONE

PLANT BY EXPERT CRAFTSMEN

USING THE FINEST OF

MATERIALS



MERRILY WE ROLL ALONG

(Continued from Page 96)

MARCH 28. 'Tis March and the winds are high, and the winds aren't the only ones.

MARCH 31. And so ends March. Thank goodness.

*"Once more in a misted April
The world is growing green."*

APRIL 1. Dr. Pittman speaks only 5 minutes in chapel. Miss Michael passes up a piece of paper.
All is over between George and Ione. Fried chicken for dinner. You've guessed it! April Fool!

APRIL 8. April showers bring May flowers.

APRIL 11. Baseball swings into popularity. Everybody goes "batty."

APRIL 23. Old maid school teachers come in for short spring term.

APRIL 25. School quarantined. Many victims of spring fever.

APRIL 28. Leland Cox gets lost whilst searching for Easter bunny.

APRIL 30. Just one more month and two more days, and we'll be out . . .

*"Sweet May hath come to love us,
Flowers, trees, their blossoms don
And through the blue heavens above us
The very clouds move on."*

MAY 1. Today's the first of May. Tra, la, la, la, la, la, la! Royalty reigns at May Day Festivities.

MAY 13. Scout Hut and Lover's Hill come to their own, now the weather's warmer.

MAY 15. REFLECTOR makes debut amid shouts of congratulations from everybody.

MAY 18. Applications are mailed and applicants are given "once over" by prospective employers.

MAY 24. Most any afternoon, now, certain couples are seen indulging in "love" games. Some call it tennis.

MAY 27. Last m'nute check up on credits. Seniors wonder, "Is it all a dream?"

*"What is so rare as a day in June?
Then, if ever, come perfect days . . ."*

JUNE 1. Just 10 more days.

JUNE 6. Final exam:—and are they final!

JUNE 9. Parting is such sweet sorrow. We're gonna miss those graduates some of these days.

JUNE 10. Governor Talmadge presents members of Senior Class with pair of red galluses following his commencement address. It was a grand finale!

Adieu and bon voyage!

1935

ZACH S. HENDERSON LIBRARY



0 2001 0488985 8



DEMCO



