

Fall 2008

Fall 2008 AASU Data Digest

Armstrong State University

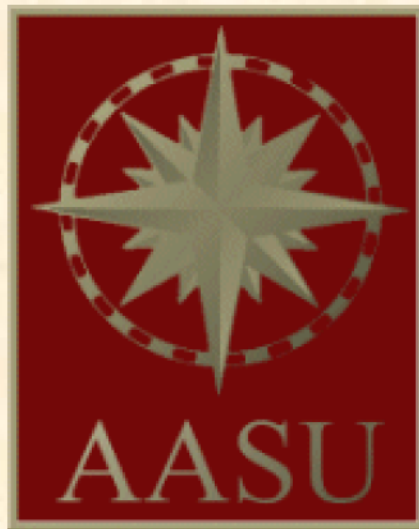
Follow this and additional works at: <https://digitalcommons.georgiasouthern.edu/armstrong-data-digests>

Recommended Citation

Armstrong State University, "Fall 2008 AASU Data Digest" (2008). *Armstrong Data Digests*. 8.
<https://digitalcommons.georgiasouthern.edu/armstrong-data-digests/8>

This other is brought to you for free and open access by the Armstrong Office of Institutional Research at Digital Commons@Georgia Southern. It has been accepted for inclusion in Armstrong Data Digests by an authorized administrator of Digital Commons@Georgia Southern. For more information, please contact digitalcommons@georgiasouthern.edu.

ARMSTRONG ATLANTIC STATE UNIVERSITY



Fall 2008 Data Digest

**Published by
Office of Institutional Research
912.344.3083
www.ir.armstrong.edu**

Table of Contents

At A Glance

Armstrong at a Glance	1
Five Year Undergraduate & Graduate Enrollment Trends	3

Enrollment

Undergraduate Headcount Enrollment	4
Graduate Headcount Enrollment	5
Undergraduate Enrollment by FT/PT Status	6
Graduate Enrollment by FT/PT Status	7
Undergraduate Enrollment by Ethnic Group	8
Graduate Enrollment by Ethnic Group	9
Undergraduate Enrollment by County of Origin	10
Graduate Enrollment by County of Origin	11
Learning Support Enrollment	12

Student Credit Hours

Student Credit Hours by College and University	13
Total Student Credit Hours	14
Breakdown of University Credit Hour Comparison	15
Departmental Productivity Ratios	16

Regent's Program Area

Explanation of USG Revised Instruction and Research Formula	17
Student Credit Hours by Revised Budget Program Area	18

Section Size

Courses by Level, Section, and Type of Instruction	19
--	----

Armstrong Atlantic At A Glance

	<u>Undergraduates</u>	<u>Graduates</u>	<u>Overall</u> <u>Total</u>
Enrollment, Fall 2008	6,215	852	7,067
Enrollment, Fall 2007	6,086	642	6,728
Percent Change in Enrollment	2.1%	32.7%	1.5%
Percent Full-Time*	68%	26%	62%
Percent Part-Time*	33%	74%	38%
Attempted Student Credit Hours, Spring 2008			
Attempted Student Credit Hours, Spring 2007			
Percent Change in Hours			
FTE, Fall 2008**			5,984
FTE, Fall 2007*			5,763
Percent Change in FTE			4.8%
Percent Female	66.1%	80.5%	67.8%
Percent Male	33.9%	19.5%	32.2%

Enrollment by Level of Classification

Freshmen/Joint Enrollment	1,984	28.0%
Sophomore	1,318	19.0%
Junior	1,155	16.0%
Senior	1,584	22.0%
Transient/Other	174	2.0%
Graduate	852	13.0%

Enrollment by Ethnic Group

American Indian/Alaskan Native	21	0.3%
Asian/Pacific Islander	219	3.1%
Black/Non-Hispanic	1,569	22.2%
Hispanic	270	3.8%
Multi-Racial	488	6.9%
White/Non-Hispanic	4,500	63.7%

* Full-time status is based upon 12 or more SCH for undergraduates and 9 or more SCH for graduates. Part-time is less than 12 for undergraduates and less than 9 for graduates.

** EFT is the Board of Regents definition of full-time equivalency.

Georgia Residents	6,096	86.0%
Out-of-State	825	11.7%
Foreign Students	146	2.0%

Joint Enrollment	50	2.7%
Beginning Freshmen	958	52.3%
Transfer Freshmen	148	8.1%
Transfer Sophomore	173	9.4%
Transfer Junior	175	9.5%
Transfer Senior	61	3.3%
Transient/Other	80	4.4%
Graduate	188	10.3%
Total	1,833	100.0%

Due to System Requirement	126
Due to Institution Requirement	40
Due to Voluntary Enrollment	44
Total	210

Undergraduate	25.2
Graduate	33.8

	<u>Female</u>	<u>Male</u>	<u>Total</u>
24 and younger	2,720	1,490	4,210
	38.6%	21.2%	59.8%
25-35	1,329	539	1,868
	18.9%	7.7%	26.5%
36-55	666	205	871
	9.5%	2.9%	12.4%
56 and older	60	33	93
	0.9%	0.5%	1.3%
TOTAL	4,775	2,267	7,042

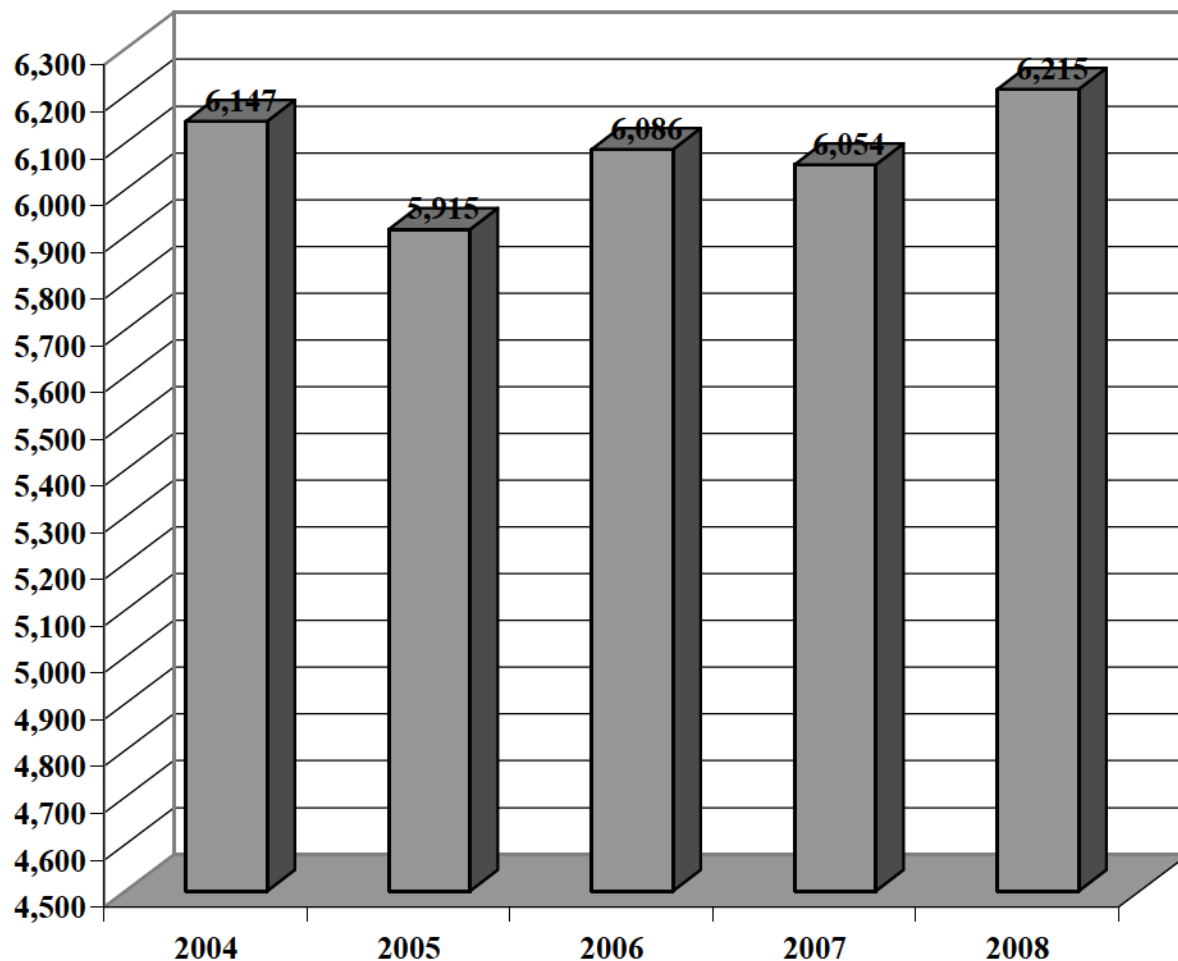
Five-Year Undergraduate and Graduate Enrollment Trends at a Glance

	Fall 2004	Fall 2005	Fall 2006	Fall 2007	Fall 2008	5 Year # Change	% Change
Headcount	7,009	6,710	6,728	6,831	7,067	58	0.8%
FTE	5,614	5,502	5,565	5,763	5,984	370	6.6%
Ethnic Status							
American Indian	23	23	26	28	21	-2	-8.7%
Asian	204	203	205	224	219	15	7.4%
Black	1,540	1,485	1,500	1,566	1,564	24	1.6%
Hispanic	209	214	256	253	268	59	28.2%
Multi-Racial	333	367	396	420	482	149	44.7%
White	4,700	4,418	4,345	4,340	4,488	-212	-4.5%
County of Origin							
Chatham	3,070	3,203	2,917	2,818	2,884	-186	-6.1%
Bryan	440	437	413	489	474	34	7.7%
Camden	117	98	99	98	100	-17	-14.5%
Effingham	387	402	357	383	402	15	3.9%
Glynn	186	211	194	191	198	12	6.5%
Liberty	575	601	565	574	550	-25	-4.3%
Long/McIntosh	85	71	62	78	59	-26	-30.6%
Other GA Counties	1,059	1,229	1,337	1,359	1,590	531	50.1%
Out of State	734	757	766	841	785	51	6.9%

Undergraduate Headcount Enrollment

Undergraduate Enrollment							
	Fall 2004	Fall 2005	Fall 2006	Fall 2007	Fall 2008	5 Year # Change	5 Year % Change
Total	6,147	5,915	6,086	6,054	6,215	68	1.1%
# Change		-232	171	-32	161		
% Change		-3.8%	2.9%	-0.5%	2.7%		

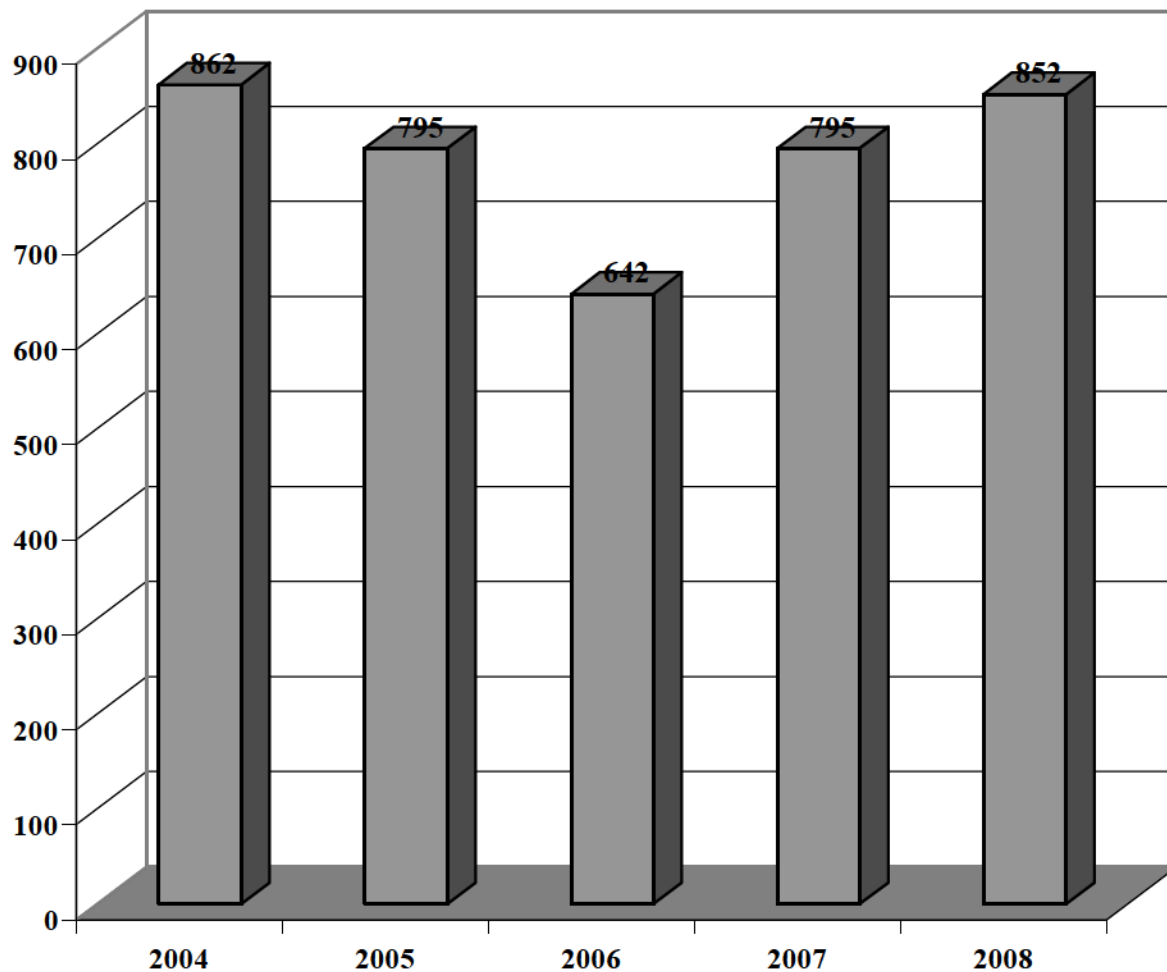
Undergraduate Headcount Enrollment



Graduate Headcount Enrollment

Graduate Enrollment							
	Fall 2004	Fall 2005	Fall 2006	Fall 2007	Fall 2008	5 Year # Change	5 Year % Change
Total	862	795	642	795	852	-10	-1.2%
# Change		-67	-153	153	57		
% Change		-7.8%	-19.2%	23.8%	7.2%		

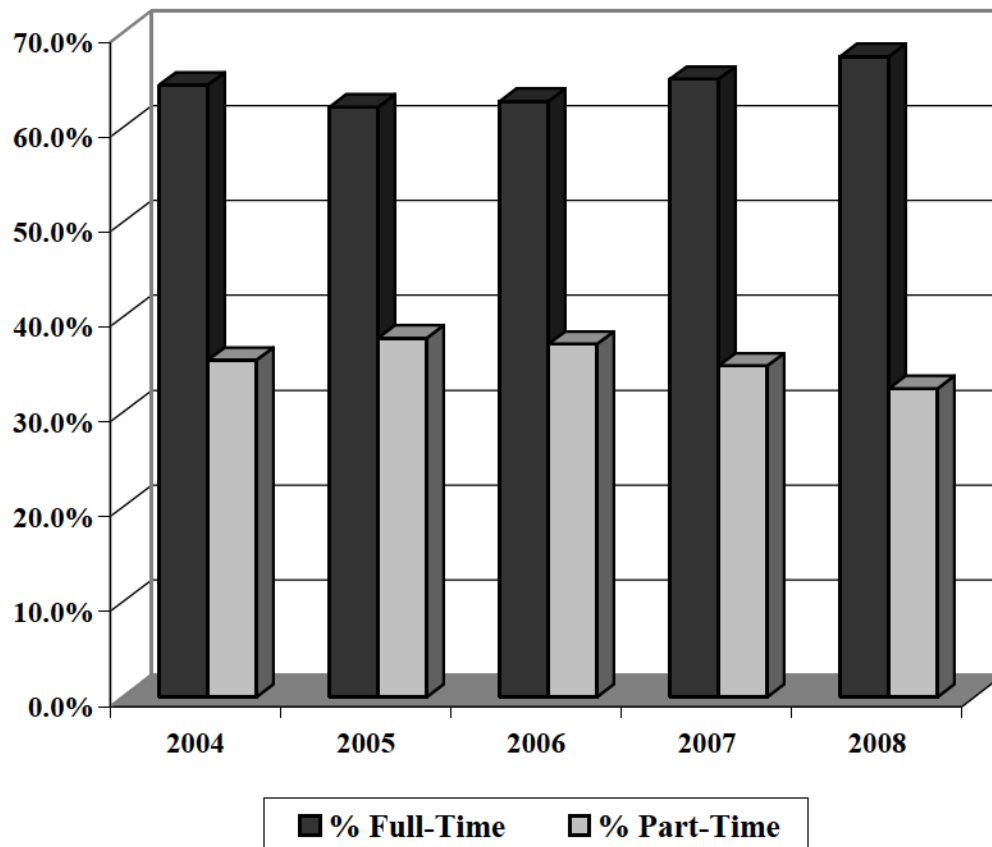
Graduate Headcount Enrollment



Undergraduate Enrollment by FT/PT Status

As a Percentage of Undergraduates					
	Fall 2004	Fall 2005	Fall 2006	Fall 2007	Fall 2008
% Full-Time	64.5%	62.2%	62.8%	65.1%	67.5%
% Part-Time	35.5%	37.8%	37.2%	34.9%	32.5%

Undergraduate FT/PT Headcount Enrollment

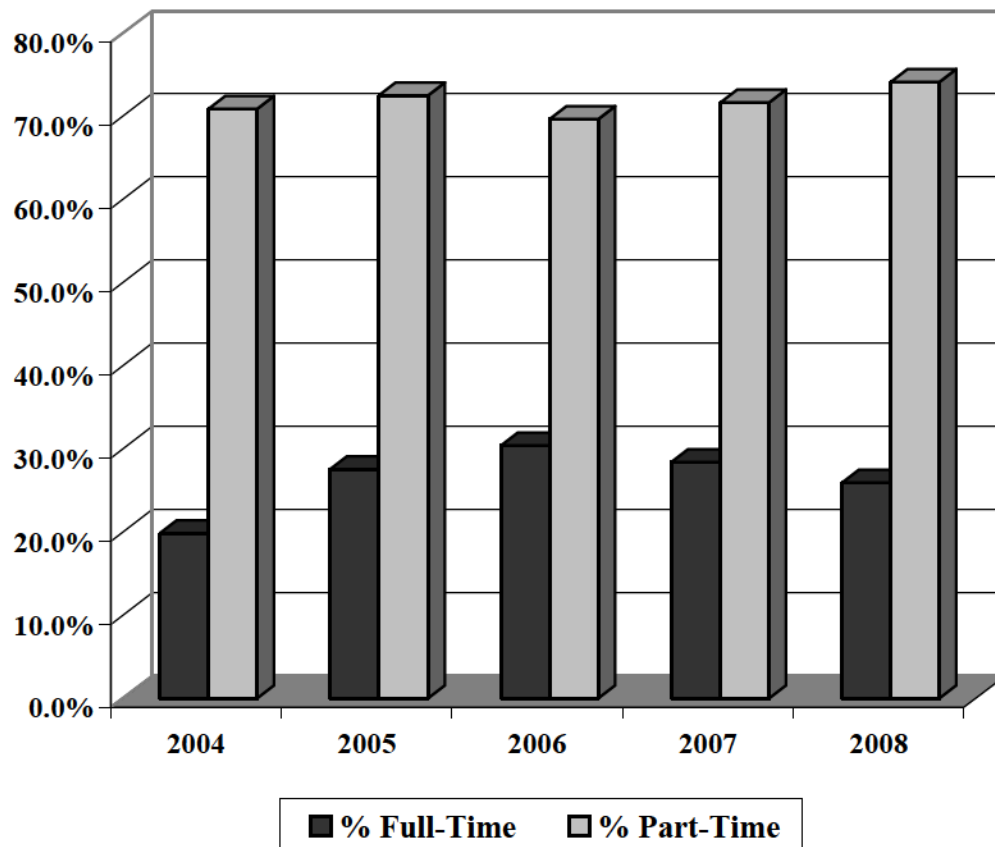


Note: Full-time undergraduate students are enrolled for 12 credit hours or more and part-time undergraduates for less than 12 credit hours.

Graduate Enrollment by FT/PT Status

	As a Percentage of Graduates				
	Fall 2004	Fall 2005	Fall 2006	Fall 2007	Fall 2008
% Full-Time	19.8%	27.5%	30.4%	28.4%	25.9%
% Part-Time	70.9%	72.5%	69.6%	71.6%	74.1%

Graduate FT/PT Headcount Enrollment

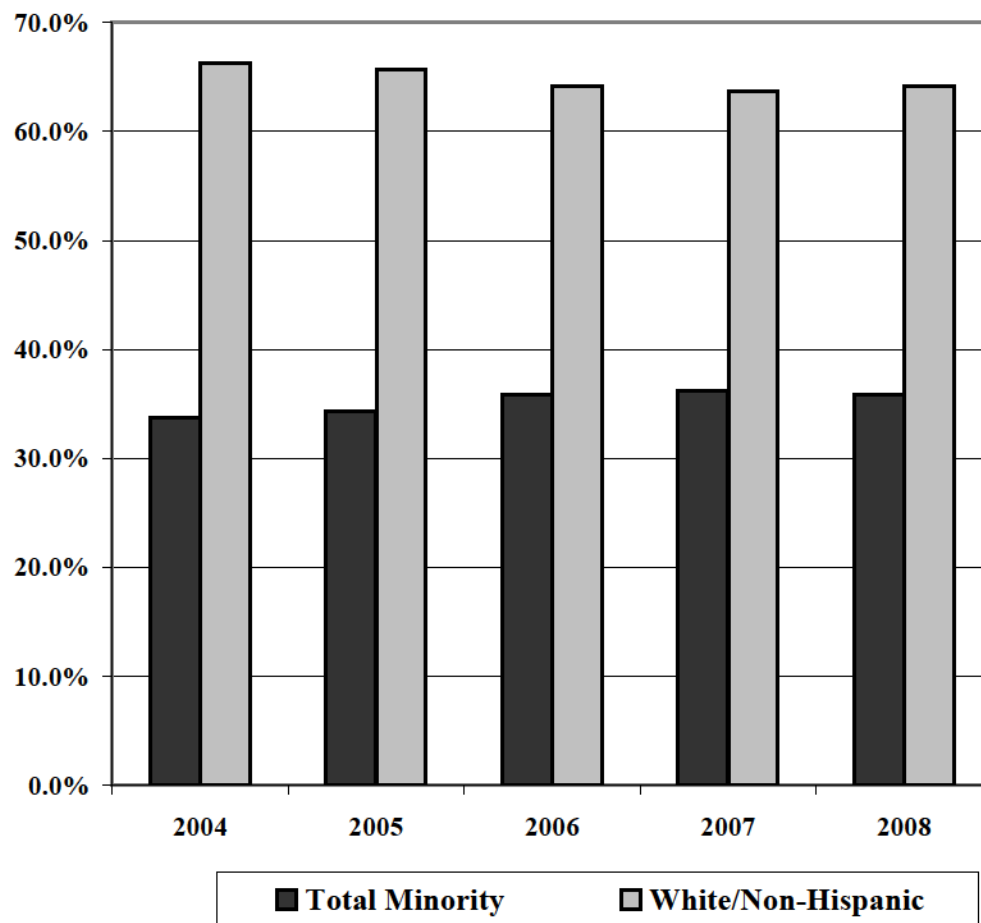


Note: Full-time graduate students are enrolled for 9 SCH or more and part-time graduates for less than 9 SCH.

Undergraduate Enrollment by Ethnic Group

As a Percentage of Undergraduates					
	Fall 2004	Fall 2005	Fall 2006	Fall 2007	Fall 2008
Amer. Indian/Alaskan	0.3%	0.4%	0.4%	0.4%	0.3%
Asian/Pacific Islander	3.0%	3.1%	3.1%	3.5%	3.3%
Black/Non-Hispanic	20.5%	21.4%	22.1%	22.3%	21.6%
Hispanic	3.4%	3.5%	4.1%	3.9%	4.1%
Multiracial	6.5%	6.0%	6.1%	6.1%	6.6%
Total Minority	33.7%	34.3%	35.9%	36.2%	35.9%
White/Non-Hispanic	66.3%	65.7%	64.1%	63.7%	64.1%

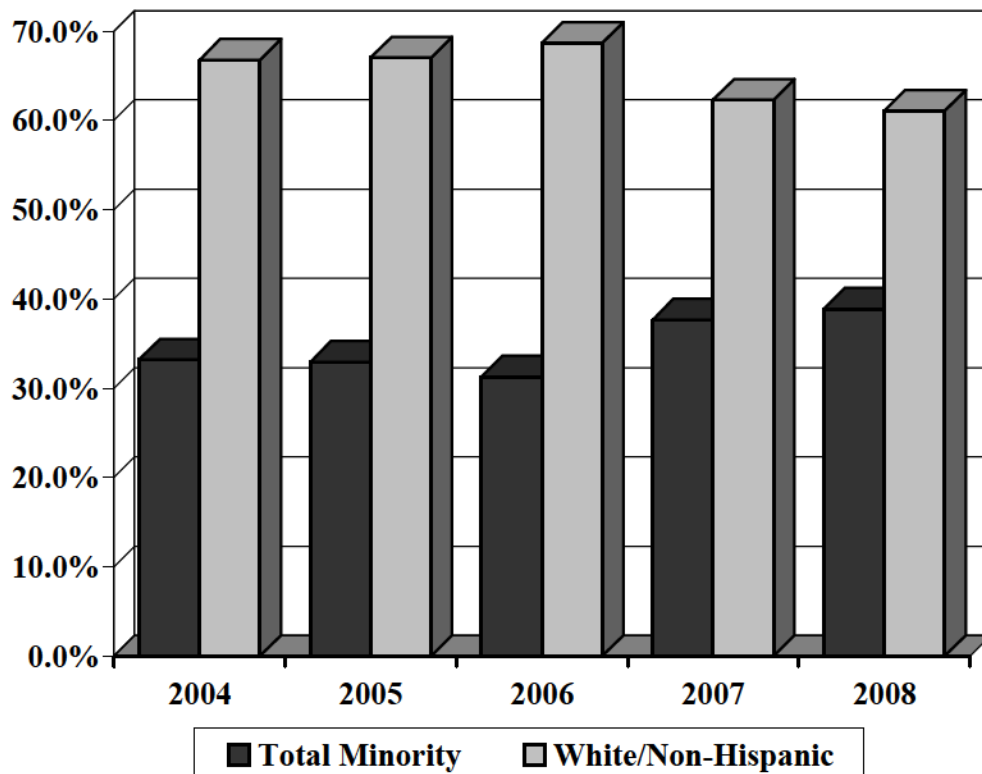
Undergraduates by Ethnic Group



Graduate Enrollment by Ethnic Group

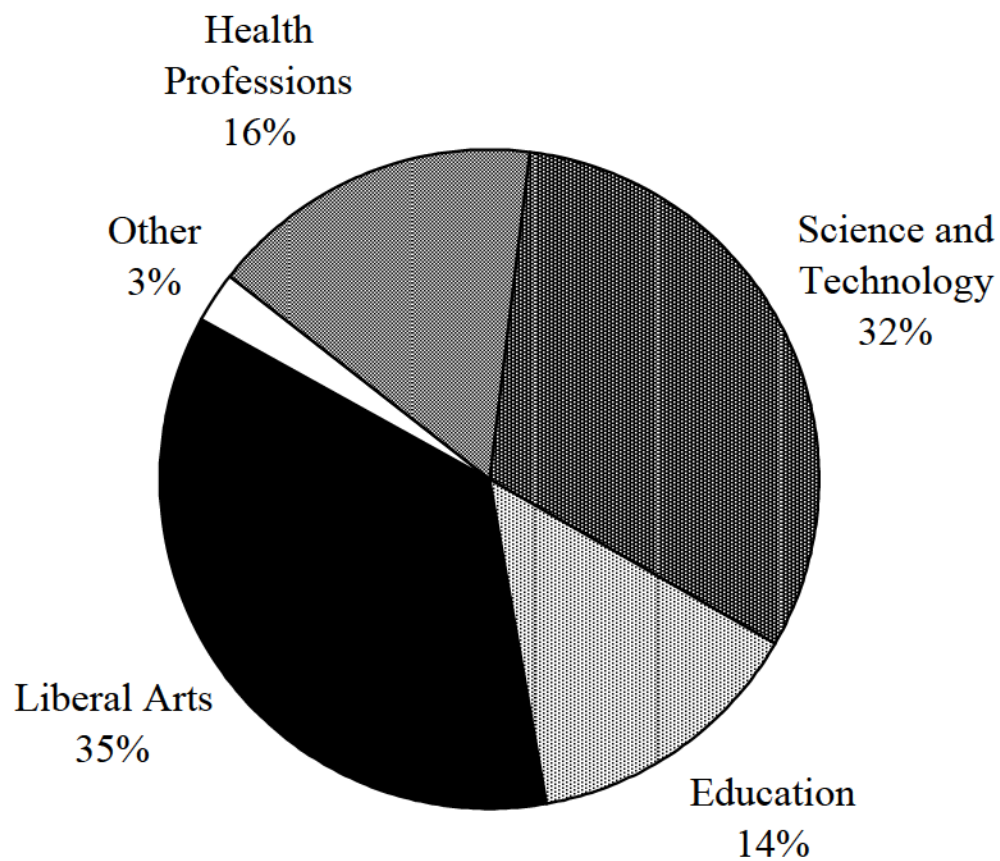
As a Percentage of Graduates					
	Fall 2004	Fall 2005	Fall 2006	Fall 2007	Fall 2008
Amer. Indian/Alaskan	0.4%	0.0%	0.2%	0.4%	0.2%
Asian/Pacific Islander	1.7%	2.1%	2.2%	1.5%	1.4%
Black/Non-Hispanic	27.4%	27.8%	24.1%	27.7%	26.8%
Hispanic	1.6%	1.1%	1.2%	1.8%	2.0%
Multiracial	2.1%	1.9%	3.6%	6.3%	8.5%
Total Minority	33.2%	33.0%	31.3%	37.7%	38.9%
White/Non-Hispanic	66.8%	67.0%	68.7%	62.3%	61.1%

Graduates by Ethnic Group



Fall 2008 Credit Hours					
	Undergrad SCH	Graduate SCH	Total SCH	Percent of College	Percent of University
Art, Music, & Theatre	5,475	58	5,533	19.9%	7.1%
CJ, Social, & Political Science	4,645	42	4,687	16.9%	6.0%
Economics	1,695	0	1,695	6.1%	2.2%
History	6,312	137	6,449	23.2%	8.3%
Interdisciplinary Studies	418	0	418	1.5%	0.5%
Languages, Literature, & Philosophy	8,876	114	8,990	32.4%	11.6%
Total: College of Liberal Arts	27,421	351	27,772	100.0%	35.8%
Communication Sciences & Disorders	240	123	363	2.9%	0.5%
Dental Hygiene	519	0	519	4.1%	0.7%
Health Science	2,132	987	3,119	24.9%	4.0%
Medical Technology	1,271	0	1,271	10.1%	1.6%
Nursing	4,187	227	4,414	35.2%	5.7%
Physical Therapy	12	915	927	7.4%	1.2%
Radiologic Sciences	1,286	0	1,286	10.3%	1.7%
Respiratory Therapy	643	0	643	5.1%	0.8%
Total: College of Health Professions	10,290	2,252	12,542	100.0%	16.2%
Early Childhood Education	2,708	1,174	3,882	36.1%	5.0%
Health & Physical Education	3,020	0	3,020	28.1%	3.9%
Middle & Secondary Education	1,072	562	1,634	15.2%	2.1%
Special & Adult Education	1,020	1,192	2,212	20.6%	2.9%
Total: College of Education	7,820	2,928	10,748	100.0%	13.9%
Biology	7,079	0	7,079	28.9%	9.1%
Chemistry & Physics	4,745	3	4,748	19.4%	6.1%
Computer Science	1,206	85	1,291	5.3%	1.7%
Engineering Studies	634	0	634	2.6%	0.8%
Information Technology	1,005	0	1,005	4.1%	1.3%
Mathematics	7,070	30	7,100	29.0%	9.2%
Psychology	2,593	15	2,608	10.7%	3.4%
Total: College of Science and Technology	24,332	133	24,465	100.0%	31.5%
AASU 1101	286	0	286		0.4%
Military/Naval Science	109	0	109		0.1%
Criminal Justice Training	1,653	0	1,653		2.1%
Total: Other	2,048	0	2,048		2.6%
Total: AASU	71,911	5,664	77,575		100.0%

Total Student Credit Hours



Breakdown of University Credit Hour Comparison

	Fall 2004	Fall 2005	Fall 2006	Fall 2007	Fall 2008
Art, Music, & Theatre	7.3%	7.5%	7.5%	7.2%	7.1%
CJ, Social, & Political Science	6.3%	6.5%	6.5%	6.0%	6.0%
Economics	2.1%	2.0%	2.1%	2.0%	2.2%
History	8.4%	8.1%	8.1%	8.2%	8.3%
Interdisciplinary Studies	0.5%	0.3%	0.4%	0.7%	0.5%
Languages, Literature, & Philosophy	12.0%	11.8%	11.9%	12.2%	11.6%
Total: College of Liberal Arts	36.6%	36.2%	36.5%	36.3%	35.7%
% Change		-0.4%	0.3%	-0.2%	-0.6%
Communication Sciences & Disorders		0.5%	0.5%	0.6%	0.5%
Dental Hygiene	0.8%	0.9%	0.8%	0.7%	0.7%
Health Science	3.0%	3.5%	3.8%	3.9%	4.0%
Medical Technology	0.4%	0.9%	1.3%	1.5%	1.6%
Nursing	4.8%	4.4%	4.3%	4.5%	5.7%
Physical Therapy	1.2%	2.4%	1.4%	1.4%	1.2%
Radiologic Sciences	1.2%	1.8%	2.0%	1.8%	1.7%
Respiratory Therapy	0.6%	0.7%	0.8%	0.9%	0.8%
Total: College of Health Professions	12.0%	15.1%	14.9%	15.3%	16.2%
% Change		3.1%	-0.2%	0.4%	0.9%
Early Childhood Education	4.3%	4.2%	4.3%	4.7%	5.0%
Health & Physical Education	3.4%	3.1%	3.5%	3.7%	3.9%
Middle & Secondary Education	3.3%	2.6%	2.4%	2.2%	2.1%
Special & Adult Education	4.1%	3.5%	3.6%	3.2%	2.9%
Total: College of Education	15.1%	13.4%	13.8%	13.8%	13.9%
% Change		-1.7%	0.4%	0.0%	0.1%
Biology	8.4%	9.8%	10.0%	10.1%	9.1%
Chemistry & Physics	5.6%	5.7%	6.1%	6.0%	6.1%
Computer Science	2.8%	2.4%	1.7%	1.6%	1.7%
Engineering Studies	0.6%	0.4%	0.7%	0.7%	0.8%
Information Technology	0.6%	0.7%	1.1%	1.2%	1.3%
Mathematics	10.0%	9.6%	9.0%	9.4%	9.2%
Psychology	4.3%	3.9%	4.0%	3.7%	3.4%
Total: College of Science & Technology	32.3%	32.5%	32.6%	32.7%	31.6%
% Change		0.2%	0.1%	0.1%	-1.1%
AASU 1101	0.4%	0.5%	0.4%	0.4%	0.4%
% Change		0.1%	-0.1%	0.1%	0.1%
Military/Naval Science	0.2%	0.1%	0.1%	0.1%	0.1%
% Change		-0.1%	0.0%	0.0%	0.0%
Criminal Justice Training	3.1%	2.1%	1.6%	1.4%	2.1%
% Change		-1.0%	-0.5%	-0.2%	0.7%

* Departmental changes were made which would result in inappropriate comparisons.

The University System of Georgia Revised Instruction and Research Formula

Explanation of Course Groupings

Group 1	Law, Letters, Library Science, Psychology, and Social Sciences
Group 2	Area Studies, Business, Communications, Education, Home Economics, Mathematics, Public Affairs, and Interdisciplinary Studies
Group 3	Agriculture, Architecture, Biological Sciences, Computer Science, Engineering, Fine and Applied Arts, Foreign Languages, Health Professions, Physical Sciences, and Technologies
Group 4	Learning Support/Developmental Studies
Group 5	Medicine, Dentistry, Veterinary Medicine

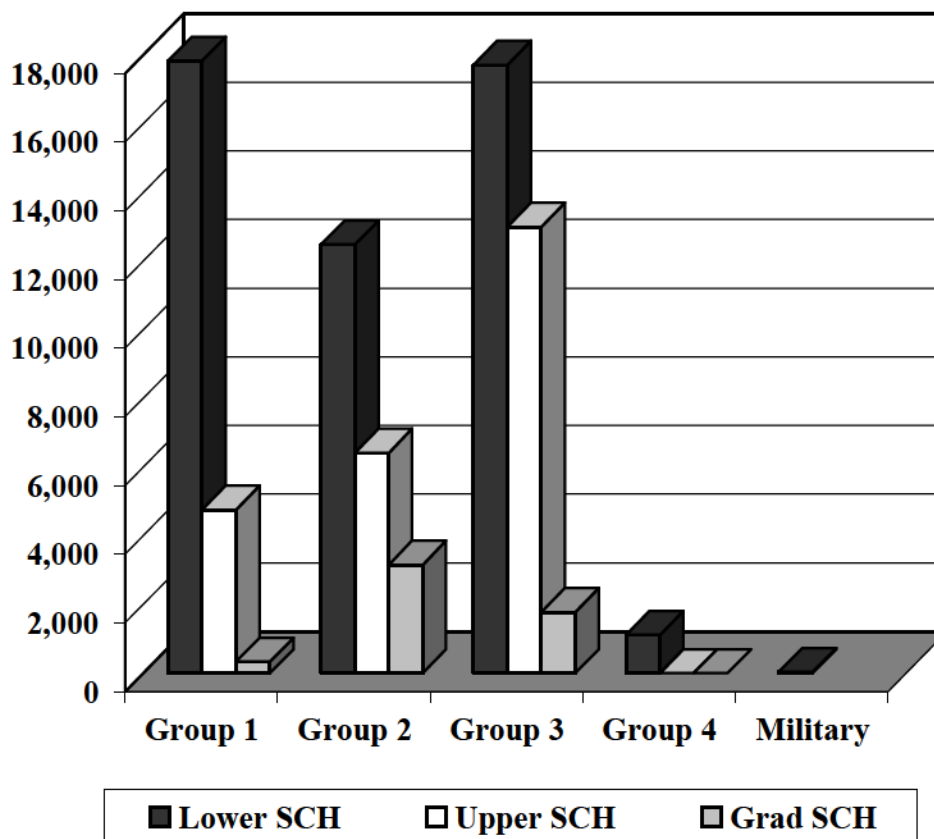
Course Level Classifications

Level:	Course Numbers Included:
Lower	0000-2999
Upper	3000-5999
Grad	5000+ (Master's Level)

Fall 2008 Student Credit Hours By Revised Budget Program Area

Program Areas	SCH Lower	SCH Upper	SCH Graduate	SCH Total
Group 1	17,849	4,769	336	22,954
Group 2	12,497	6,429	3,164	22,090
Group 3	17,725	13,006	1,788	32,519
Group 4	1,122	0	0	1,122
Military	41	33	0	74
Total	49,234	24,237	5,288	78,759

Credit Hours by Budget Program Area



Courses by Level, Section, and Type of Instruction

DEPARTMENT - LEVEL SUBJECT TYPE #SECTIONS # ENROLLED AVG. SIZE

COLLEGE OF EDUCATION

Early Childhood Education

Lower Level	ECUG	Lecture	3	81	27.0
Upper Level	ECUG	Lab	8	67	8.4
	ECUG	Lecture	14	234	16.7
	ECUG	Other	6	126	21.0
Graduate Level	ECMT	Lab	5	20	4.0
	ECEG	Lecture	6	82	13.7
	ECMT	Lecture	6	116	19.3
	EDUC	Lecture	1	24	24.0
	RDEN	Lecture	2	47	23.5
			15	269	17.9
	ECEG	Other	1	3	3.0
Department Total			52	800	15.4

Health and Physical Education

Lower Level	PEBC	Lab	19	398	20.9
	EDUC	Lecture	4	116	29.0
	PEAT	Lecture	1	18	18.0
	PEBC	Lecture	5	150	30.0
	PEEC	Lecture	6	94	15.7
	PEHM	Lecture	2	55	27.5
			18	433	24.1
Upper Level	PEHM	Lab	1	7	7.0
	PEHM	Lecture	2	40	20.0
	PEEC	Lecture	4	100	25.0
			6	140	23.3
Department Total			44	978	22.2

Middle and Secondary Education

Lower Level	EDUC	Lecture	4	96	24.0
Upper Level	MGSE	Lab	5	21	4.2
	EDUC	Lecture	5	78	15.6
	MGSE	Lecture	6	53	8.8
			11	131	11.9
	MGSE	Other	5	25	5.0
Graduate	MGED	Lab	4	10	2.5
	EDUC	Lecture	2	31	15.5
	MGED	Lecture	3	17	5.7
	MGSE	Lecture	9	78	8.7
	SCED	Lecture	1	13	13.0
	TECH	Lecture	1	1	1.0
			16	140	8.8
Department Total			45	423	9.4

DEPARTMENT - LEVEL SUBJECT TYPE #SECTIONS # ENROLLED AVG. SIZE

Special and Adult Education

Lower Level	CEUG	Lecture	3	65	21.7
	READ	Lecture	1	10	10.0
	RGTR	Lecture	2	40	20.0
			6	115	19.2
Upper Level	SPED	Lab	3	11	3.7
	CEUG	Lecture	2	39	19.5
	EDUC	Lecture	6	88	14.7
	SPED	Lecture	8	66	8.3
			8	127	15.9
Graduate	ADED	Lab	1	17	17.0
	EEXE	Lab	1	3	3.0
			2	20	10.0
	ADED	Lecture	4	60	15.0
	EDUC	Lecture	7	85	12.1
	EEXE	Lecture	8	171	21.4
	FOUN	Lecture	2	36	18.0
	HRVD	Lecture	1	13	13.0
			22	365	16.6
			41	638	15.6
Department Total					

COLLEGE OF HEALTH PROFESSIONS**Communication Sciences and Disorders**

Lower Level	CSDS	Lecture	2	31	15.5
Upper Level	CSDS	Lecture	3	22	7.3
Graduate	CSDS	Lecture	2	13	6.5
	CSDS	Other	1	7	7.0
Department Total			8	73	9.1

Dental Hygiene

Lower Level	DHYG	Lab	4	64	16.0
	DHYG	Lecture	6	116	19.3
Department Total			10	180	18.0

<u>DEPARTMENT - LEVEL</u>	<u>SUBJECT</u>	<u>TYPE</u>	<u>#SECTIONS</u>	<u># ENROLLED</u>	<u>AVG. SIZE</u>
Health Science					
Lower Level	HSCC	Lecture	4	97	24.3
	HSCP	Lecture	1	30	30.0
			5	127	25.4
Upper Level	GERO	Lecture	1	37	37.0
	HSCA	Lecture	3	80	26.7
	HSCC	Lecture	5	132	26.4
	HSCP	Lecture	3	77	25.7
	PUBH	Lecture	7	127	18.1
	SMED	Lecture	3	57	19.0
			22	510	23.2
	GERO	Other	1	3	3.0
	HSCA	Other	4	15	3.8
	HSCP	Other	1	1	1.0
	SMED	Other	1	1	1.0
			7	20	2.9
	ADMT	Lecture	1	7	7.0
	GERO	Lecture	1	2	2.0
Graduate	MHSA	Lecture	8	61	7.6
	PUBH	Lecture	12	136	11.3
	SMED	Lecture	3	13	4.3
			25	219	8.8
	GERO	Other	1	1	1.0
	MHSA	Other	3	7	2.3
	PUBH	Other	6	32	5.3
	SMED	Other	4	12	3.0
			14	52	3.7
Department Total			73	928	12.7
Medical Technology					
Upper Level	MEDT	Lab	3	51	17.0
	MEDT	Lecture	7	149	21.3
	MEDT	Other	2	50	25.0
Department Total			12	250	20.8
Nursing					
Upper Level	NURS	Lab	11	86	7.8
	NURS	Lecture	21	892	42.5
	NURS	Other	5	33	6.6
Graduate	NURS	Lab	2	12	6.0
	NURS	Lecture	3	26	8.7
	NURS	Other	5	15	3.0
Department Total			47	1064	22.6

<u>DEPARTMENT - LEVEL</u>	<u>SUBJECT</u>	<u>TYPE</u>	<u>#SECTIONS</u>	<u># ENROLLED</u>	<u>AVG. SIZE</u>
---------------------------	----------------	-------------	------------------	-------------------	------------------

Physical Therapy

Upper Level	RHAB	Other	1	4	4.0
Graduate	PHTH	Lecture	3	58	19.3
	PHTH	Other	6	71	11.8
Department Total			10	133	13.3

Radiologic Sciences

Lower Level	HLPR	Lecture	5	104	20.8
Upper Level	RADS	Lab	10	120	12.0
	RADS	Lecture	13	201	15.5
	RADS	Other	11	108	9.8
Department Total			39	533	13.7

Respiratory Therapy

Lower Level	RESP	Lecture	2	85	42.5
Upper Level	RESP	Lab	3	30	10.0
	RESP	Lecture	2	40	20.0
	RESP	Other	4	29	7.3
Department Total			11	184	16.7

<u>DEPARTMENT - LEVEL</u>	<u>SUBJECT</u>	<u>TYPE</u>	<u>#SECTIONS</u>	<u># ENROLLED</u>	<u>AVG. SIZE</u>
---------------------------	----------------	-------------	------------------	-------------------	------------------

COLLEGE OF LIBERAL ARTS**Art, Music, and Theatre**

Lower Level	MUSC	Lab	13	156	12.0
	THEA	Lab	1	22	22.0
			14	178	12.7
	ARTS	Lecture	19	474	24.9
	COMM	Lecture	4	86	21.5
	MUSC	Lecture	11	275	25.0
	THEA	Lecture	6	139	23.2
			40	974	24.4
	ARTS	Lab	5	32	6.4
	MUSC	Lab	7	34	4.9
Upper Level	THEA	Lab	2	7	3.5
			14	73	5.2
	ARTS	Lecture	13	170	13.1
	COMM	Lecture	1	11	11.0
	MUSC	Lecture	6	38	6.3
	THEA	Lecture	7	107	15.3
			27	326	12.1
	ARTS	Other	1	2	2.0
	MUSC	Other	2	3	1.5
	THEA	Other	2	3	1.5
			5	8	1.6
Graduate Level	ARTS	Lecture	3	10	3.3
	COMM	Lecture	3	26	8.7
			6	36	6.0
Department Total			106	1595	15.0

Criminal Justice, Political Science, and Social Science

Lower Level	ANTH	Lecture	2	92	46.0
	CRJU	Lecture	5	121	24.2
	LWSO	Lecture	1	9	9.0
	POLS	Lecture	14	397	28.4
	SOCI	Lecture	6	322	53.7
			28	941	33.6
Upper Level	ANTH	Lecture	1	28	28.0
	CRJU	Lecture	8	98	12.3
	POLS	Lecture	12	161	13.4
	SOCI	Lecture	3	42	14.0
			24	329	13.7
	CRJU	Other	3	10	3.3
	POLS	Other	1	1	1.0
			4	11	2.8
Graduate	CRJU	Lecture	4	7	1.8
	POLS	Lecture	1	2	2.0
			5	9	1.8
	CRJU	Other	1	2	2.0
Department Total			62	1292	20.8

<u>DEPARTMENT - LEVEL</u>	<u>SUBJECT</u>	<u>TYPE</u>	<u>#SECTIONS</u>	<u># ENROLLED</u>	<u>AVG. SIZE</u>
---------------------------	----------------	-------------	------------------	-------------------	------------------

Economics

Lower Level	ACCT	Lecture	1	23	23.0
	ECON	Lecture	9	224	24.9
			10	247	24.7
Upper Level	ECON	Lecture	10	191	19.1
	ECON	Other	2	7	3.5
Department Total			22	445	20.2

History

Lower Level	GEOG	Lecture	4	150	37.5
	HIST	Lecture	20	783	39.2
			24	933	38.9
Upper Level	HIST	Lecture	11	192	17.5
Graduate	HIST	Lecture	6	42	7.0
	HIST	Other	2	4	2.0
Department Total			43	1171	27.2

Languages, Literature, & Philosophy

Lower Level	ENGL	Lecture	18	386	21.4
	ETHC	Lecture	2	111	55.5
	FREN	Lecture	2	45	22.5
	GRMN	Lecture	2	32	16.0
	PHIL	Lecture	5	128	25.6
	RGTE	Lecture	1	17	17.0
	SPAN	Lecture	11	220	20.0
			41	939	22.9
Upper Level	JOUR	Lab	1	8	8.0
	ENGL	Lecture	14	259	18.5
	FILM	Lecture	2	44	22.0
	FREN	Lecture	2	10	5.0
	GRMN	Lecture	1	1	1.0
	JOUR	Lecture	1	21	21.0
	PHIL	Lecture	5	31	6.2
	SPAN	Lecture	5	83	16.6
			30	449	15.0
	ENGL	Other	1	4	4.0
Graduate	ENGL	Lecture	5	15	3.0
	PHIL	Lecture	1	9	9.0
	SPAN	Lecture	1	3	3.0
			7	27	3.9
	ENGL	Other	1	3	3.0
	SPAN	Other	1	2	2.0
Department Total			82	1432	17.5

DEPARTMENT - LEVEL SUBJECT TYPE #SECTIONS # ENROLLED AVG. SIZE

COLLEGE OF SCIENCE AND TECHNOLOGY

Biology

Lower Level	BIOL	Lab	12	255	21.3
	ISCI	Lab	1	20	20.0
			13	275	21.2
	BIOL	Lecture	22	933	42.4
	ISCI	Lecture	1	21	21.0
			23	954	41.5
Upper Level	BIOL	Lab	10	160	16.0
	BIOL	Lecture	9	284	31.6
	BIOL	Other	2	5	2.5
Department Total			57	1678	29.4

Chemistry & Physics

Lower Level	CHEM	Lab	11	187	17.0
	ISCI	Lab	1	22	22.0
	PHSC	Lab	3	71	23.7
	PHYS	Lab	5	146	29.2
			20	426	21.3
	CHEM	Lecture	15	478	31.9
	ISCI	Lecture	1	22	22.0
	PHSC	Lecture	2	110	55.0
	PHYS	Lecture	5	146	29.2
		Lecture	1	30	30.0
			24	786	32.8
Upper Level	CHEM	Lab	5	35	7.0
	PHYS	Lab	1	9	9
			6	44	7.3
	ASTR	Lecture	1	84	84.0
	CHEM	Lecture	6	73	12.2
	GEOL	Lecture	1	36	36.0
	METR	Lecture	1	50	50.0
	OCEA	Lecture	2	52	26.0
	PHYS	Lecture	3	13	4.3
			14	308	22.0
	CHEM	Other	1	1	1.0
	GEOL	Lecture	1	1	1.0
Department Total			66	1566	23.7

Computer Science

Lower Level	CSCI	Lecture	12	234	19.5
Upper Level	CSCI	Lab	1	3	3.0
	CSCI	Lecture	8	59	7.4
	CSCI	Other	1	1	1.0
Graduate	CSCI	Lecture	3	17	5.7
	CSCI	Other	3	6	2.0
Department Total			28	320	11.4

DEPARTMENT - LEVEL SUBJECT TYPE #SECTIONS # ENROLLED AVG. SIZE

Engineering Studies

Lower Level	ENGR	Lab	2	34	17.0
	ENGR	Lecture	8	126	15.8
Department Total			10	160	16.0

Information Technology

Lower Level	ITEC	Lecture	7	159	22.7
	WBIT	Lecture	3	10	3.3
			10	169	16.9
Upper Level	ITEC	Lecture	7	133	19.0
	WBIT	Lecture	3	8	2.7
			10	141	14.1
	ITEC	Other	1	1	1.0
Department Total			30	479	16.0

Mathematics

Lower Level	MATH	Lecture	25	836	33.4
Upper Level	MATH	Lab	7	126	18.0
	MATH	Lecture	12	201	16.8
	STAT	Lecture	1	28	28.0
			13	229	17.6
Graduate	MATH	Lecture	2	10	5.0
Department Total			47	1201	25.6

Psychology

Lower Level	PSYC	Lecture	16	531	33.2
Upper Level	PSYC	Lab	1	15	15.0
	PSYC	Lecture	12	241	20.1
	PSYC	Other	1	4	4.0
Graduate	PSYC	Lecture	2	5	2.5
Department Total			32	796	24.9

<u>DEPARTMENT - LEVEL</u>	<u>SUBJECT</u>	<u>TYPE</u>	<u>#SECTIONS</u>	<u># ENROLLED</u>	<u>AVG. SIZE</u>
---------------------------	----------------	-------------	------------------	-------------------	------------------

Interdisciplinary Studies

Lower Level	XREG	Lecture	6	80	13.3
Graduate	MALP	Lecture	2	6	3.0
Total			8	86	10.8

Law Enforcement Training Center

	LETC	Lab	6	42	7.0
	LETC	Lecture	6	41	6.8
	LETC	Other	5	32	6.4
Total			17	115	6.8

Military Science

Lower Level	MILS	Lab	2	19	9.5
	MILS	Lecture	4	22	5.5
	NSCI	Lecture	2	3	1.5
			6	25	4.2
Upper Level	MILS	Lab	3	17	5.7
	NSCI	Lab	1	6	6.0
			4	23	5.8
	MILS	Lecture	3	17	5.7
Department Total			25	132	5.3