

Georgia Southern University

## Georgia Southern Commons

---

[At a Glance \(2011-2016\)](#)

[About Georgia Southern](#)

---

2016

### At a Glance

Georgia Southern University

Follow this and additional works at: <https://digitalcommons.georgiasouthern.edu/glance>



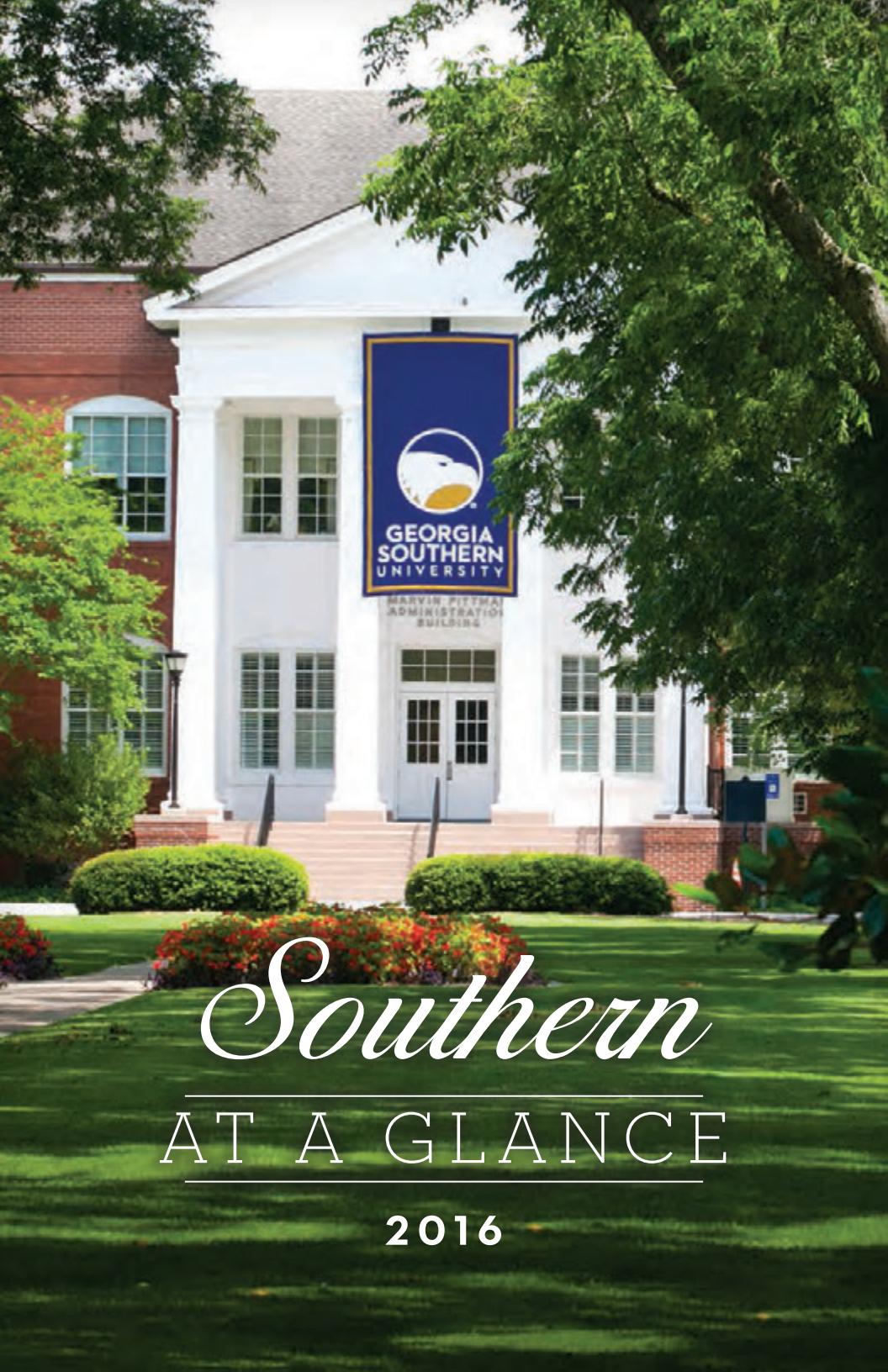
Part of the [Higher Education Commons](#)

---

#### Recommended Citation

Georgia Southern University, "At a Glance" (2016). *At a Glance (2011-2016)*. 5.  
<https://digitalcommons.georgiasouthern.edu/glance/5>

This brochure is brought to you for free and open access by the About Georgia Southern at Georgia Southern Commons. It has been accepted for inclusion in At a Glance (2011-2016) by an authorized administrator of Georgia Southern Commons. For more information, please contact [digitalcommons@georgiasouthern.edu](mailto:digitalcommons@georgiasouthern.edu).



MARVIN PITTMAN  
ADMINISTRATION  
BUILDING

*Southern*

---

AT A GLANCE

---

2016



*TOP: The historic center of Georgia Southern, Sweetheart Circle, features an oasis of live oaks, green space and buildings dating back to 1906.*

*ABOVE LEFT: The Eagles football team made history when it won a bowl game in its first year of eligibility. The game was viewed by more than 2.4 million on ESPN, the most watched pre-Christmas bowl in 2015.*

*ABOVE RIGHT: Georgia Southern is home to three bald eagles, including Freedom, who flies at football games and commencement ceremonies. Glory, the oldest, celebrates a birthday every March.*



**GEORGIA  
SOUTHERN  
UNIVERSITY**

## *An Overview*

Georgia Southern University is the state's largest and most comprehensive center of higher education south of Atlanta. With 125 degree programs at the baccalaureate, master's and doctoral levels, Georgia Southern has been designated a Carnegie Doctoral/Research university and provides the classic residential campus experience, as well as online learning options to 20,459 students from 49 states and 86 nations.

Georgia Southern's nationally accredited academic programs prepare diverse scholars for leadership and service as world citizens. A unit of the University System of Georgia, the University boasts 200-plus student organizations, outstanding Division I athletics, and state-of-the art residence halls and campus facilities.

Founded in 1906, Georgia Southern is one of the most beautiful campuses in the state. The historic core of campus is the quintessential college portrait – Georgian-style, red-brick buildings with white columns wrapping around the tree-lined circular drive known as Sweetheart Circle.

Beyond the traditional Circle, contemporary buildings blend into the existing architecture to showcase the continuing growth and expansion of Georgia Southern facilities. Major projects recently completed include construction of a new Health Services center and the Shooting Sports Education Center. A new 32,000-square-foot Military Science Building is scheduled for completion in 2016.

# STUDENTS

Georgia Southern hosts students from 49 states and 86 nations. The average SAT scores for freshman classes exceed both state and national averages. University students are engaged in community volunteer activities, campus theatre productions, academic organizations and recreational athletics. They can choose from more than 200 campus organizations, including social sororities and fraternities, honor societies, plus religious, political and service groups.



# FACULTY

Students are taught by inspired and accomplished Georgia Southern faculty in an environment of academic excellence that provides hands-on learning as well as opportunities for research, internships and workplace readiness. Our talented faculty members earn state, regional and national honors and recognition for their research. Small class sizes allow students to get to know their professors. At Georgia Southern, professors not only teach classes, they set high academic expectations, serve as mentors and promote student growth and lifelong learning.

# ACADEMIC PROGRAMS

Georgia Southern offers 125 degree programs through eight colleges: Allen E. Paulson College of Engineering and Information Technology, College of Business Administration, College of Education, College of Health and Human Sciences, Jack N. Averitt College of Graduate Studies, Jiann-Ping Hsu College of Public Health, College of Liberal Arts and Social Sciences and the College of Science and Mathematics.

The University is accredited by the Southern Association of Colleges and Schools Commission on Colleges and has earned special accreditation from professional and academic associations that set standards in their fields. Georgia Southern continues to expand graduate and online offerings to meet the needs of students in the region. Additionally, with an expanding focus on research, Georgia Southern has created a valuable niche, attracting a record number of the brightest students and scholars from across the state and country.



## ALUMNI

Some things are forever – like being one of more than 80,000 Eagle Nation members. The Georgia Southern Alumni Association fosters relationships with alumni and friends through programs that promote the growth, progress and welfare of the University. Wherever you live, chances are there is a loyal group of Eagles nearby. The Alumni Association maintains Alumni Networks and Affinity Groups to keep alumni connected and engaged. These offer support to the University by providing scholarships for qualified students, assisting in recruiting the best and brightest students and reinforcing Georgia Southern traditions.

## **ALLEN E. PAULSON COLLEGE OF ENGINEERING AND INFORMATION TECHNOLOGY**

Named in honor of the founder of Gulfstream Aerospace, the college combines strong theoretical and practical training to prepare its students for careers in the high-demand fields of engineering and IT. Offering undergraduate degrees in Mechanical, Electrical and Civil Engineering -- and the region's only B.S. in Manufacturing Engineering -- as well as IT, Computer Science and Construction Management, the college also offers master's degrees in Computer Science and Applied Engineering. CITEMS, the college's applied research center, facilitates collaborations between faculty, students, industry and government.

## **COLLEGE OF BUSINESS**

The College of Business offers a number of degree programs that consistently rank among the best in the nation. The college was named by *Newsweek.com* as a 2015 Leading Global Business School.

The college's Online MBA was named one of the best 2015-16 programs by *AffordableCollegesOnline.org*, and the Online MBA and Online Graduate Business programs were ranked in the top 25 by *U.S. News & World Report*. The bachelor's, master's and doctoral programs are designed to prepare students to meet the challenges of a constantly changing business environment.

## **COLLEGE OF EDUCATION**

The College of Education prepares future educators and leaders through diverse, intensive field experiences, cutting-edge technology and research-based instruction. It is a regional leader in online graduate programs and consistently prepares the highest number of graduate students at the University. The college's Online Master in Education is ranked No. 9 by *BestColleges.com* for 2015. The Youth-At-Risk Journal, Goizueta Distinguished Chair in Hispanic/Latino Education and leadership in the University's Institute for Interdisciplinary STEM Education reinforce its commitment to important areas of national need.

## **COLLEGE OF LIBERAL ARTS AND SOCIAL SCIENCES**

The College of Liberal Arts and Social Sciences encompasses the humanities, social sciences, languages and the arts and is the largest college on campus, serving a central role in every student's core of knowledge. The college promotes high academic performance and empowers students to develop their analytical, creative and communication skills, and expand their intellectual curiosity and appreciation for the power of the arts, leadership and citizenship.

## **COLLEGE OF HEALTH AND HUMAN SCIENCES**

The College of Health and Human Sciences focuses on the health and quality of life of individuals, families and communities with degree programs in the School of Nursing, the School of Human Ecology and the School of Health and Kinesiology. The Fashion Merchandising and Apparel Design program has been named one of the top fashion schools in the nation by *Fashion-Schools.org* and the college's online master's

in Sport Management is ranked No. 6 by Top *ManagementDegrees.com*.

## COLLEGE OF SCIENCE AND MATHEMATICS

The College of Science and Mathematics offers nationally recognized degree programs in biology, chemistry, geology and geography, mathematical sciences and physics, while providing outstanding preprofessional training, support and advisement for students planning to enter medical, dental, veterinary, optometry and pharmacy schools. Additionally, it supports one of the nation's top Military Science programs, which will be housed in the University's new \$9.5 million Military Science building, opening in late 2016.

## JIANN-PING HSU COLLEGE OF PUBLIC HEALTH

Established in 2004 as the first School of Public Health in the University System of Georgia, the Jiann-Ping Hsu College of Public Health offers bachelor's, master's and doctoral degrees in Public Health as well as a master's in Healthcare Administration.

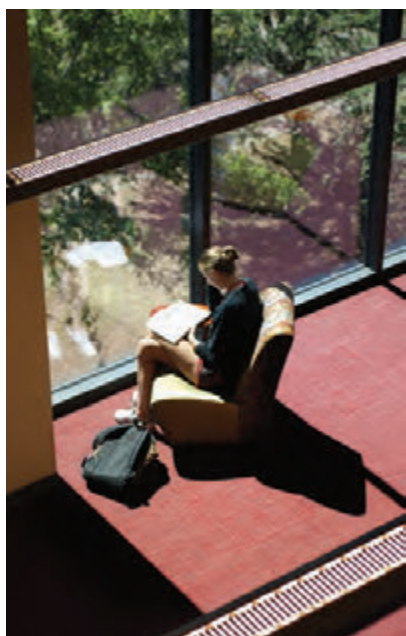
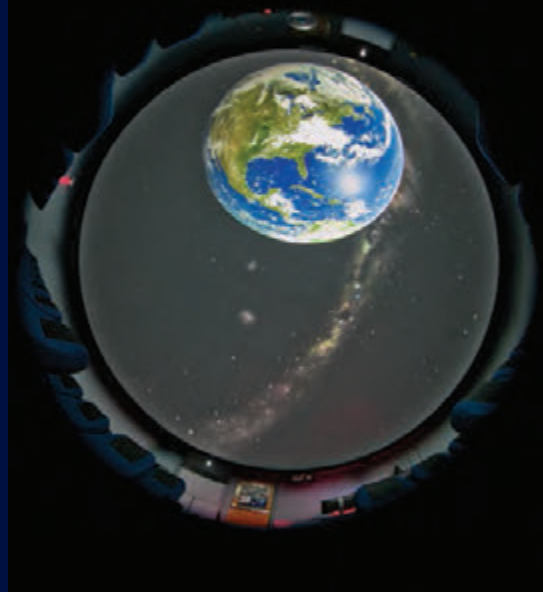
Focusing on empowering rural communities and underserved populations to effectively address public health issues, eliminate health disparities and improve health outcomes, the college is committed to a student-centered approach and faculty members honored for both classroom and research initiatives. The college is one of only 57 accredited schools of public health in the world.

## JACK N. AVERITT COLLEGE OF GRADUATE STUDIES

The Jack N. Averitt College of Graduate Studies provides administrative oversight for more than 50 graduate degree programs in seven colleges through both campus and online delivery. Guided by accomplished faculty mentors, graduate students earn advanced training in their discipline by engaging in scholarship, teaching and professional service activities characteristic of a challenging and vibrant curriculum in a supportive environment.







## PLANETARIUM

Georgia Southern's Planetarium, located in the Math-Physics Building, features the advanced Digistar 5 digital planetarium system. Visitors will enjoy the night sky display, 360-degree full-dome movies with surround sound and real-time tours of the solar system and our galaxy, while exploring the universe. The Planetarium also features the ability to display real-time data from satellites and a NASA feed to watch live events. During the fall and spring semesters, the Planetarium offers free educational presentations for school and public groups.



## ZACH S. HENDERSON LIBRARY

The Zach S. Henderson Library serves more than 4,000 people daily with resources that support a comprehensive array of degrees, disciplines, research activity and learning objectives. With more than 400 hard-wired computer workstations, access to archives of data and information, and an innovative storage solution, the Henderson Library ranks as one of the most technologically advanced in the Southeast.

The Library was designed for both independent and collaborative learning and includes group study rooms, presentation practice rooms and a Learning Commons equipped with stations for standard and multimedia applications. The facility houses more than one million books, periodicals and other documents. Behind the scenes, the Automated Retrieval Collection (ARC) allows for the efficient and compact storage of hundreds of thousands of current resources and future acquisitions.



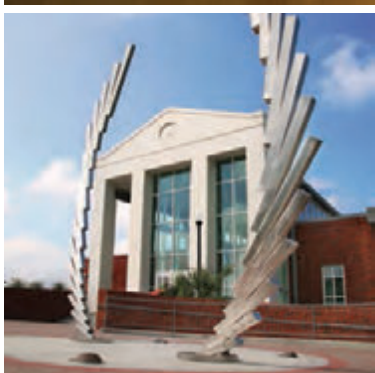
*ABOVE: The state-of-the-art Foy Building provides quality learning experiences for music students with a music technology lab, expanded classrooms and rehearsal halls. Various musical performances are held each year in the Carol A. Carter Recital Hall, located within the facility.*

## SYMPHONY

The Georgia Southern Symphony performs a series of free concerts comprising a wide range of classical and popular compositions for the entertainment and enlightenment of the people of Statesboro and coastal Georgia communities.

## CHORALE

Georgia Southern Chorale is a world-class choral ensemble known for its dynamic performances on local, regional and international stages. The internationally competitive Chorale performs a wide variety of literature including choral masterworks and spirituals to name a few.



## CENTER FOR ART & THEATRE

The Center for Art & Theatre offers public exhibitions of visual art created by contemporary professional artists and students and a Black Box Theatre where students, faculty and the public can enjoy the performing arts. The Center for Art & Theatre houses four galleries including the Betty Foy Sanders Georgia Artists Collection, a continuously expanding gift of pieces established and curated by Betty Foy Sanders, a Bulloch County native and wife of the late former Georgia Gov. Carl Sanders. The other galleries include the family-friendly Smith Banks Folk Art Collection, which features two- and three-dimensional artworks representing the folk art tradition of Georgia, and the Contemporary and University galleries filled with revolving exhibitions of works by contemporary and emerging artists.



*LEFT: "Ascend," a sculpture symbolic of artistry, nature and pride, welcomes visitors to Georgia Southern's Center for Art & Theatre. University art professor Marc Moulton designed and created the piece.*

# SHOOTING SPORTS EDUCATION CENTER

The new Shooting Sports Education Center is a state-of-the-art instructional facility that serves all authorized students and public visitors. The result of a partnership with the Georgia Department of Natural Resources, the center is the only facility of its kind in the nation on a college campus. It features training rooms, an archery center, a firearms range and provides space for the University's archery club team and the women's varsity NCAA rifle team to practice and host competitions.



## GOLF COURSE

The Georgia Southern University Golf Course at University Park is an 18-hole championship course that was named to Golf Digest's Best New Golf Course list in 2014. The course has a driving range, practice putting and chipping greens, along with a renovated clubhouse, which includes a pro shop, café and meeting space. Located just six miles south of Georgia Southern's main campus in a residential area of Bulloch County, the course measures 6,900 yards from the back tees and is open to students, faculty, staff and community members.



## BRUCE AND KATHRYN GRUBE RECREATION ACTIVITY CENTER

The Bruce and Kathryn Grube Recreation Activity Center (RAC) has everything you need to stay active including a fitness center, basketball courts, climbing wall and more! The RAC is located within M. C. Anderson Park with 74 acres of lighted playing fields, Olympic-size swimming pool, a band shell and pavilion for all of campus to enjoy.

The RAC is home to Campus Recreation & Intramurals, which offers unique ways to be active and involved through seven program areas including Aquatics, Club Sports, Fitness, Intramural Sports, Southern Adventures, University Wellness and Informal Recreation.



## EAGLE ATHLETICS

Georgia Southern fields 17 NCAA teams with a storied program that has achieved national accolades on and off the field. In addition to six FCS national football championship flags flying at Allen E. Paulson Stadium, Georgia Southern teams and individuals regularly compete for conference and national honors.

In 2014, Georgia Southern left the Southern Conference and moved to the Football Bowl Subdivision's Sun Belt Conference, claiming the Sun Belt crown in its first season in the Conference. In 2015, the team won the 17th GoDaddy Bowl in its first season of bowl eligibility.

The University's athletics teams include football, men's and women's basketball, baseball, volleyball, men's and women's golf, men's and women's tennis, indoor and outdoor track and field, cross country, swimming and diving, softball, men's and women's soccer and women's rifle.



*LEFT: The Eagles' 2015 season ended in a dominating 58-27 GoDaddy Bowl victory over Bowling Green University.*

*BOTTOM: The Georgia Southern women's golf program is playing its inaugural season during the 2015-16 academic year. The schedule features four tournaments in the fall and six in the spring. The fledgling program is coached by Emily Kuhfeld.*

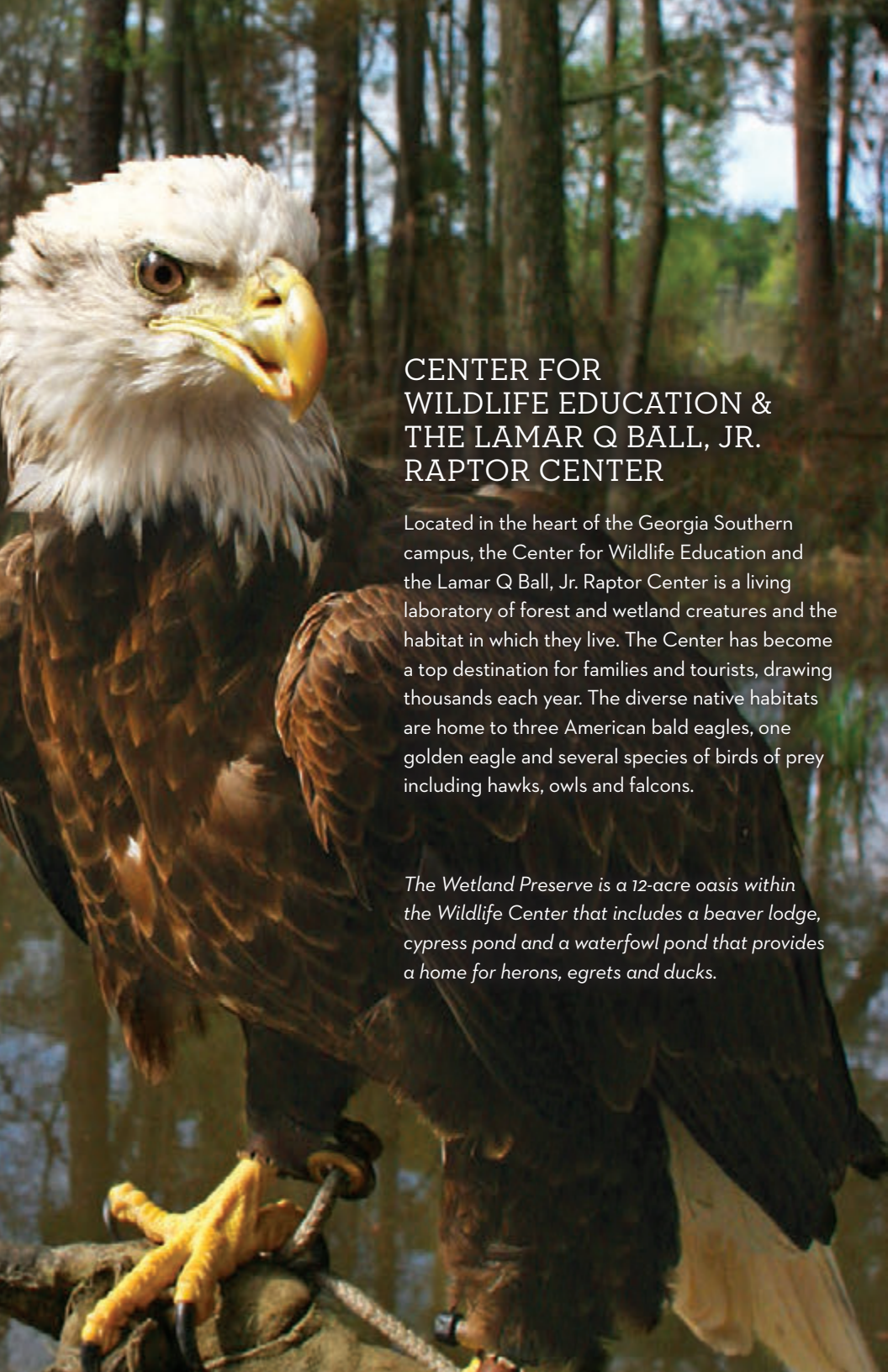






## DIVISION OF CONTINUING EDUCATION

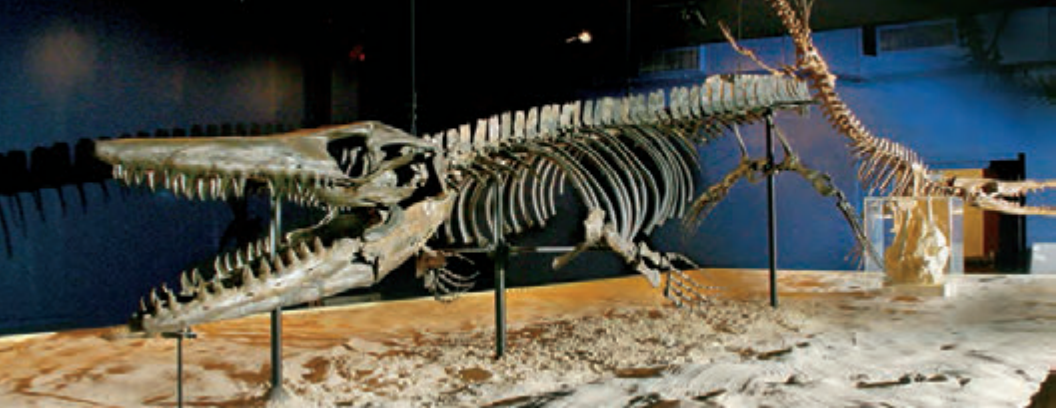
The Division of Continuing Education is the educational liaison between the University's academic colleges and the surrounding region. The Division offers industry, groups and individuals a wide range of opportunities for lifelong learning, with many of our programs awarding Continuing Education Units (CEUs) or Professional Learning Units (PLUs). Companies and organizations may enroll individual employees in our standard Professional Development courses or choose a Customized Training option, in which courses are specifically tailored to meet objectives. Personal Development courses, from photography to creative writing, and youth programs, from Lego Robotics to SAT Exam Prep, are community favorites. In addition, the Division of Continuing Education provides conference coordination services to assist the University's academic colleges as well as external organizations. The Division houses the English Language Program, a curriculum that helps non-English speakers gain fluency in English. Rounding out the Division are two technologically advanced conference centers: the Nessmith-Lane Conference Center in Statesboro and the Coastal Georgia Center in Savannah.



## CENTER FOR WILDLIFE EDUCATION & THE LAMAR Q BALL, JR. RAPTOR CENTER

Located in the heart of the Georgia Southern campus, the Center for Wildlife Education and the Lamar Q Ball, Jr. Raptor Center is a living laboratory of forest and wetland creatures and the habitat in which they live. The Center has become a top destination for families and tourists, drawing thousands each year. The diverse native habitats are home to three American bald eagles, one golden eagle and several species of birds of prey including hawks, owls and falcons.

*The Wetland Preserve is a 12-acre oasis within the Wildlife Center that includes a beaver lodge, cypress pond and a waterfowl pond that provides a home for herons, egrets and ducks.*



## MUSEUM

For more than three decades, the University Museum has showcased artifacts of the natural and cultural history of the region. Changing exhibits interpret the research and work of University faculty and present traveling exhibits from U.S. and international museums. The only accredited museum of its kind in the coastal region, its exhibits and educational programs appeal to a wide range of interests and ages and include interactive and hands-on programs for children, adults, families, teachers and University students.

## PERFORMING ARTS CENTER

The Performing Arts Center is home to world-class touring shows, renowned lecturers and programs for cultural outreach. The 825-seat theatre features an orchestra pit and shell, a full-size proscenium stage, and state-of-the-art technology for lighting, sound and production.

## BOTANIC GARDEN

Centered on the early 20th-century farmstead of Dan and Catharine Bland, the Botanic Garden offers visitors a unique view of the heritage of the southeastern Coastal Plain. Established to promote knowledge and appreciation of native plants and animals, the 11-acre Garden connects people of all ages to the natural and cultural richness of the region and inspires environmentally responsible behavior.

# HERTY ADVANCED MATERIALS DEVELOPMENT CENTER

In 2012, Georgia Governor Nathan Deal transferred management of Herty to Georgia Southern University to enhance economic and business development in the state of Georgia. The alignment with the University creates a powerful partnership, which links academic research with applied research activities at Herty. As a result, Herty can now provide expertise and support for the full gamut of technical readiness levels – from bench-scale to full production and from concept to commercialization. Located in Savannah, Herty is a global leader in traditional and advanced materials innovation.



# UNIVERSITY FOUNDATION

Since 1962, the Georgia Southern University Foundation, Inc., has been rallying alumni and friends in support of the University. The Foundation energetically seeks, and responsibly administers, private funds that underwrite scholarships, internships and other academic enrichment that enables young people to attain their dreams and, ultimately, to better their communities. The Foundation also provides added financial support for Georgia Southern's faculty to explore their vast national



and international potential in teaching and scholarly inquiry. The significance of private funding for public universities is growing more important with each passing year. In response, the Georgia Southern Foundation continually seeks new avenues by which to engage the generosity of givers in support of the University's academic vision.

# CITY CAMPUS

City Campus is the result of a long-standing cooperative relationship between Georgia Southern and the city of Statesboro. Located in downtown Statesboro, it was developed to serve as a catalyst for regional economic development. The entrepreneurial-focused site provides classrooms and meeting space for business professionals. It is also the headquarters for the University's Business Innovation Group (BIG), which is committed to providing students with the necessary skills and training to understand business principles, how they operate and to successfully launch a new business enterprise. BIG received a Gold Excellence in Economic Development Award from the International Economic Development Council in 2015. City Campus also houses a full-service Innovation Incubator and a Digital Fabrication Laboratory (Fab Lab) – a joint venture between Georgia Southern, the city of Statesboro and the Downtown Statesboro Development Authority. The FabLab will serve as a place for entrepreneurs to design, develop and test products.





## POINTS OF PRIDE

Georgia Southern's diverse student population stands at 20,459 students from 49 U.S. states, the District of Columbia, Puerto Rico and 86 nations.

Georgia Southern University's accreditation has been reaffirmed by the Southern Association of Colleges and Schools Commission on Colleges (SACSCOC) through year 2025. The reaffirmation demonstrates the University's commitment to the highest educational standards.

Georgia Southern's Botanic Garden has been named one of the "50 Most Amazing University Botanical Gardens and Arboreta in the U.S." by *BestOnlineColleges.org*. The list considered a variety of criteria, including awards and recognition, variety of plant species and conservation and educational outreach programs.

Georgia Southern University's student feature magazine, *The Reflector*, earned two first-place honors, and its student literary magazine, *Miscellany*, received a top 10 ranking at the National College Media Convention in Austin, Texas.

The new, two-story Health Services center opened in January 2016. The 39,000-square-foot facility houses 48 exam rooms as well as a women's health center with a separate waiting room, exam rooms and office spaces. The center also provides lab, X-ray, pharmacy, immunization, physical therapy, health education and Eagle Eye Care.

As part of the 2016 budget for the state of Georgia, Georgia Southern received \$33.6 million in funding to build a new multidisciplinary classroom building as well as an additional \$1 million in operating budget funding for the new manufacturing engineering program.

For the fifth consecutive year, the *Princeton Review's "Guide to 322 Green Colleges"* selected Georgia Southern as one of the most environmentally responsible "green" colleges in the nation.



# FAST FACTS

## TOTAL ENROLLMENT: 20,459

Undergraduate: 17,963

Graduate: 2,496

Men/Women: 9,786/10,673

Georgia Residents: 93%

International Residents: 2.8%

Countries Represented: 86

## DIVERSITY

White: 62%

Black: 26.5%

All Other Races: 9.5%

Unknown: 2%

## COUNTRIES WITH LARGEST ENROLLMENT OUTSIDE THE U.S.

1. Nigeria
2. Honduras
3. China/India (tie)
4. Canada
5. Burkina Faso/Mexico/Bahamas (tie)

## COUNTIES WITH LARGEST ENROLLMENT

1. Gwinnett
2. Bulloch
3. Fulton
4. Cobb
5. Chatham

**STUDENT/FACULTY RATIO: 21:1**

**SAT AVERAGE: 1112**

**FIRST-TIME FRESHMEN RETENTION AND GRADUATION RATE: 82%**

**FOUNDATION SCHOLARSHIPS AWARDED FY14-15: \$1,436,151**

## ENROLLMENT BY COLLEGE

College of Liberal Arts & Social Sciences: 4,544

College of Business Administration: 3,636

College of Health & Human Sciences: 3,572

Allen E. Paulson College of Engineering & Information Technology: 3,174

College of Education: 2,117

College of Science & Mathematics: 1,797

Jiann-Ping Hsu College of Public Health: 383

*Balance enrolled under College of Graduate Studies, Academic Affairs or Student Affairs*

## MOST POPULAR MAJORS (2014-15)

1. Business/Marketing
2. Parks and Recreation
3. Liberal Arts/General Studies
4. Biological/Life Sciences
5. Health Professions and Related Programs

## FACULTY AND STAFF

Full-time Faculty: 845

Part-time Faculty: 101

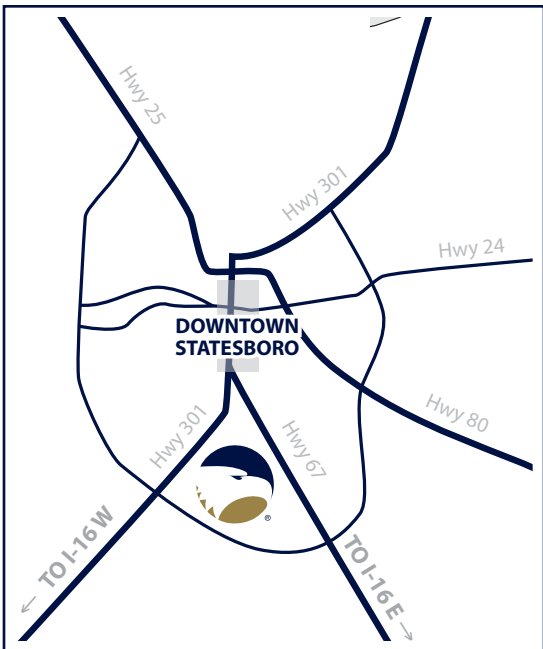
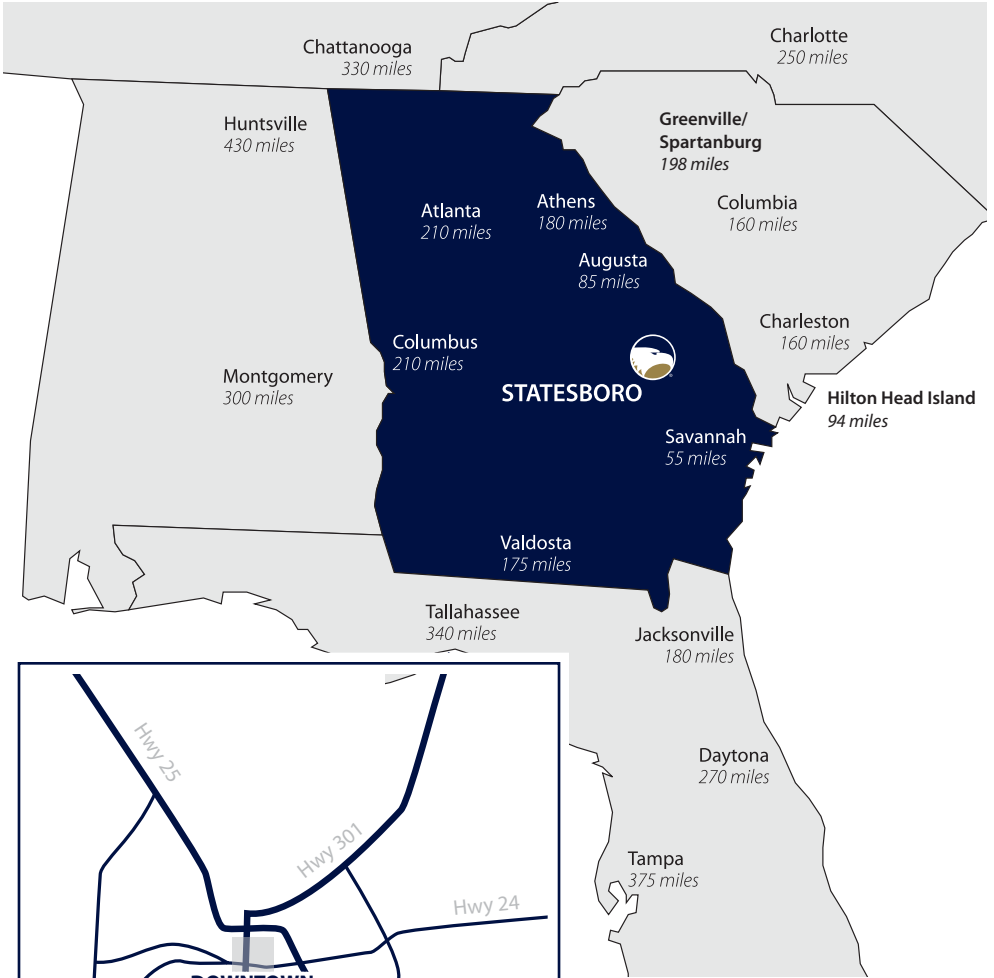
Full-time Staff: 1,772

Temporary Staff: 155

Student Employees: 3,360

Data as of Fall 2015

# Visit Us!



## GEORGIA SOUTHERN UNIVERSITY

100 Southern Drive  
Statesboro, Georgia 30458

[GeorgiaSouthern.edu](http://GeorgiaSouthern.edu)

912-478-4636 (912-GSU-INFO)





**GEORGIA  
SOUTHERN**  
UNIVERSITY

*GeorgiaSouthern.edu*