

Georgia Southern University

## Digital Commons@Georgia Southern

---

Armstrong Presidential Speeches &  
Presentations

Armstrong Office of the President

---

2-1-2010

### Spring All-Campus Meeting

Linda Bleicken

*Armstrong Atlantic State University*

Follow this and additional works at: <https://digitalcommons.georgiasouthern.edu/armstrong-pres-speeches>

---

#### Recommended Citation

Bleicken, Linda, "Spring All-Campus Meeting" (2010). *Armstrong Presidential Speeches & Presentations*. 7.  
<https://digitalcommons.georgiasouthern.edu/armstrong-pres-speeches/7>

This presentation is brought to you for free and open access by the Armstrong Office of the President at Digital Commons@Georgia Southern. It has been accepted for inclusion in Armstrong Presidential Speeches & Presentations by an authorized administrator of Digital Commons@Georgia Southern. For more information, please contact [digitalcommons@georgiasouthern.edu](mailto:digitalcommons@georgiasouthern.edu).



ARMSTRONG ATLANTIC STATE UNIVERSITY  
*Spring All-Campus Meeting*  
*February 1, 2010*



# *Today's Agenda*



- Review of Fall Semester
- Planning and Budget Update
- Regional Economic Outlook
- 75th Anniversary

# *Enrollment Tops 7,500*



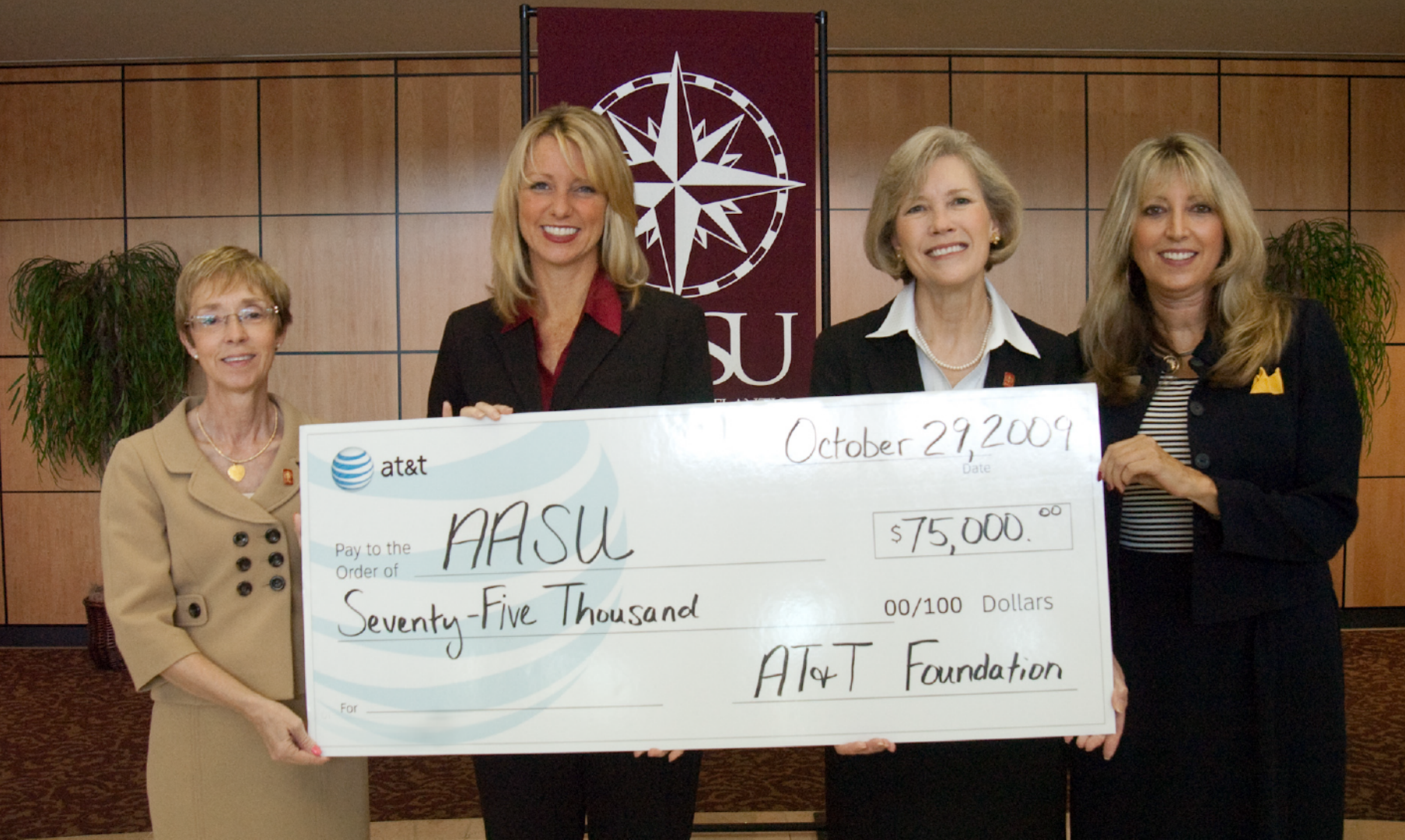



# *Doctor of Physical Therapy Degree*





# *AT&T & AASU Join Forces for Education*



		October 29, 2009 <small>Date</small>	
Pay to the Order of <u>AASU</u>		<u>\$75,000.00</u>	
<u>Seventy-Five Thousand</u>		00/100 Dollars	
For _____		<u>AT&amp;T Foundation</u>	



# *Grants From NSF Top \$2.1 Million Since 2008*



# *Excitement Builds Around Student Union & Windward Commons*





*Kristin Burton*

*Breaks Peach Belt Scoring Record*



# *AASU in the Community*



- Initiative for Civic Engagement (I.C.E.)  
launched September 17
- AASU Makes a Difference



# *Residential Students Association and Habitat For Humanity*



# Soul of a People: Writing America's Story



*Soul of a People*  
Writing America's Story

**Discover the legacy of the  
Federal Writer's Project  
in Savannah with Five  
Programs free and open  
to the public**

**Kick-off Celebration Depicting Life  
in Savannah During the New Deal Era**  
Saturday, October 3, 2009  
1 - 5 p.m.  
Bull Street Branch of Live Oak Public Libraries

**Drums and Shadows**  
Saturday, October 10, 2009  
3 - 5 p.m.  
Carnegie Branch of Live Oak Public Libraries

**Richard Wright and Twelve Million  
Black Voices**  
Wednesday, October 14, 2009  
6:30 p.m.  
Armstrong Center

**Symposium on American  
Life Histories**  
Wednesday, October 21, 2009  
9:30 a.m.  
Armstrong Center

**Soul of a People:  
Voices from the Writer's Project**  
Thursday, November 5, 2009  
6 p.m.  
Neases Auditorium of Jepson Center,  
Telfair Museum of Art

Soul of a People: Writing America's Story is a major documentary television program about the Federal Writers Project produced by Spark Media, Washington, D.C., and broadcast on the Smithsonian Channel HD.  
Soul of a People programs in libraries are sponsored by the American Library Association Public Programs Office with the support of the National Endowment for the Humanities; great ideas brought to life.  
Photos are the property of the Library of Congress.

SPARK MEDIA NATIONAL ENDOWMENT FOR THE HUMANITIES AASU LIVE OAK PUBLIC LIBRARIES GEORGIA ALA TELFAIR MUSEUM OF ART Spark Smithsonian HD



*AASU Leads the Community with \$17,160.36!*





# *Staff Advisory Council Gathers Toys for Tots*



*College of Education*

*Richmond Hill Physical Fitness Days*





# *Alumni Read Aloud at East Broad Elementary*





# *1,000 H1N1 Vaccines, Free*





# *Kappa Sigma Shaves to Save*





# *Biology Club Project Diamondback*





ARMSTRONG ATLANTIC STATE UNIVERSITY

*Budget Update*





# AASU

## Budget and Finances FY 2010

# Budget FY 2009 VS FY 2010

---

---

State Appropriations	\$35,077,201	\$31,608,766
Tuition	\$19,251,998	\$20,500,000
Other General Funds	\$767,461	\$2,428,372
Total General Funds Revenues	\$55,096,660	\$54,537,138

---

# What Happened from FY 2009 to FY 2010



-

- State appropriations decreased by \$3.5 million



+

- Tuition income increased by \$1.3 million



+

- Other general funds increase by \$1.6 million

# Stimulus Funds



+

- FY 2009 \$315,000



+

- FY 2010 \$2.5 Million



-

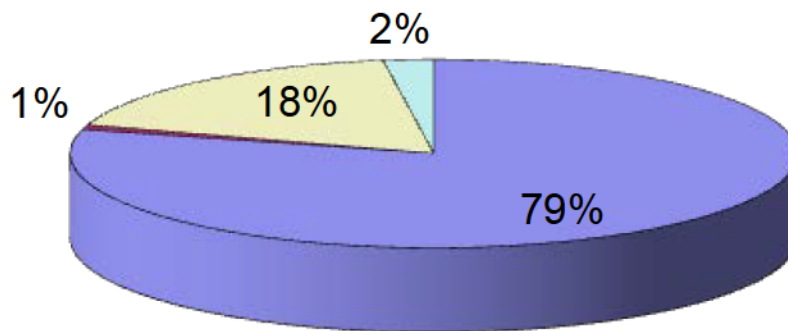
- \$2.5 million needs to be paid back in FY 2012

# Budget FY 2009 VS FY 2010

<b>Expenditure</b>	<b>FY 2009</b>	<b>FY 2010</b>
Salaries/Wages	\$43,564,491	\$41,493,706
Travel	\$477,470	\$553,779
Operating	\$9,822,387	\$12,006,079
Equipment	\$1,232,312	\$483,574
Total Expenditures	\$55,096,660	\$54,537,138

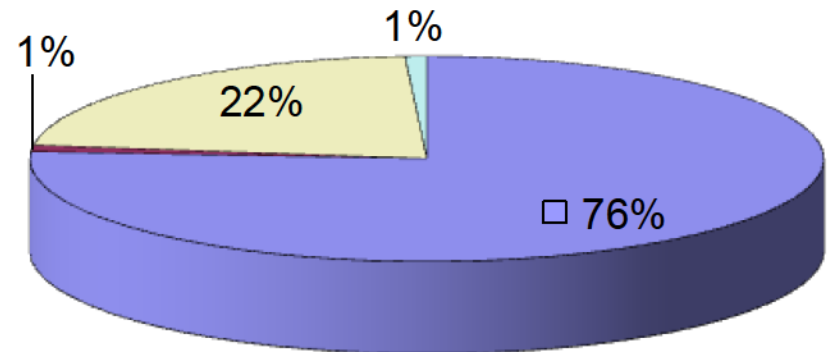
# Comparisons of Expenditures

## FY 2009 Expenditures



■ Salaries & Wages  
■ Travel  
■ Operating Expenses  
■ Equipment

## FY 2010 Expenditures



■ Salaries & Wages  
■ Travel  
■ Operating Expenses  
■ Equipment



# Annual Audit



+

- Unqualified Opinion



+

- First Full Audit in 12 Years



+

- Management Letter with Comments

# What Happened to The Income from Tuition Growth??

-

- Fund Unbudgeted items
- Some Faculty positions
- Part-time Instructor Positions
- Unbudgeted lease payments

-

- Held to Pay back Stimulus Funds in 2012



ARMSTRONG ATLANTIC STATE UNIVERSITY

*Economic Outlook*

# **Regional Economic Forecast Savannah MSA, 2010**



**Dr. Michael Toma**  
**Director, Center for Regional Analysis**  
**Coordinator, Public Service Center**  
**Professor of Economics**  
**February 1, 2010**



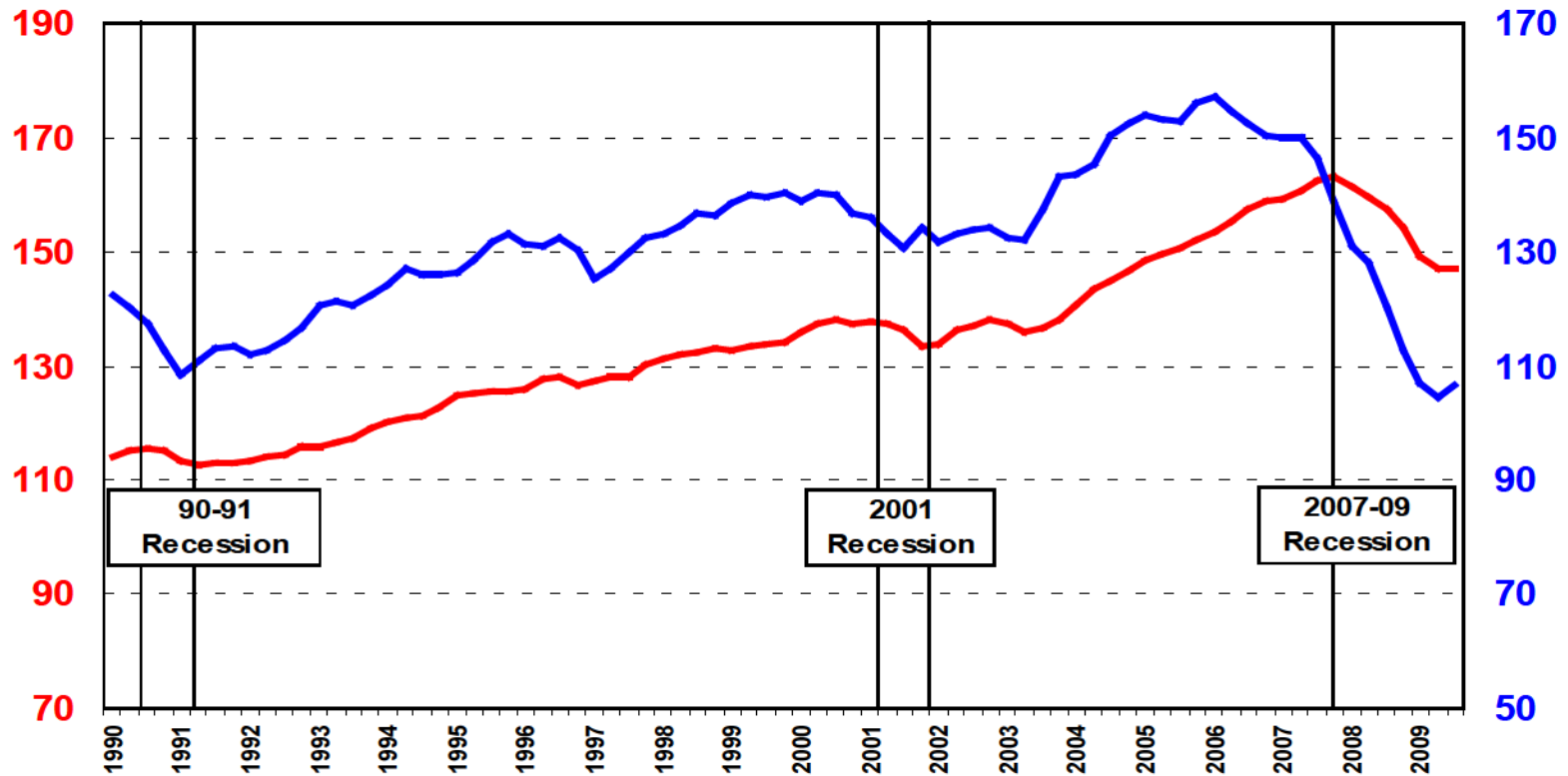
# **Savannah Economic Diversification**

- **Georgia Ports Authority**
- **Health Care**
- **In-Migration**
- **Manufacturing**
- **Military Activity**
- **Real Estate Development**
- **Tourism**



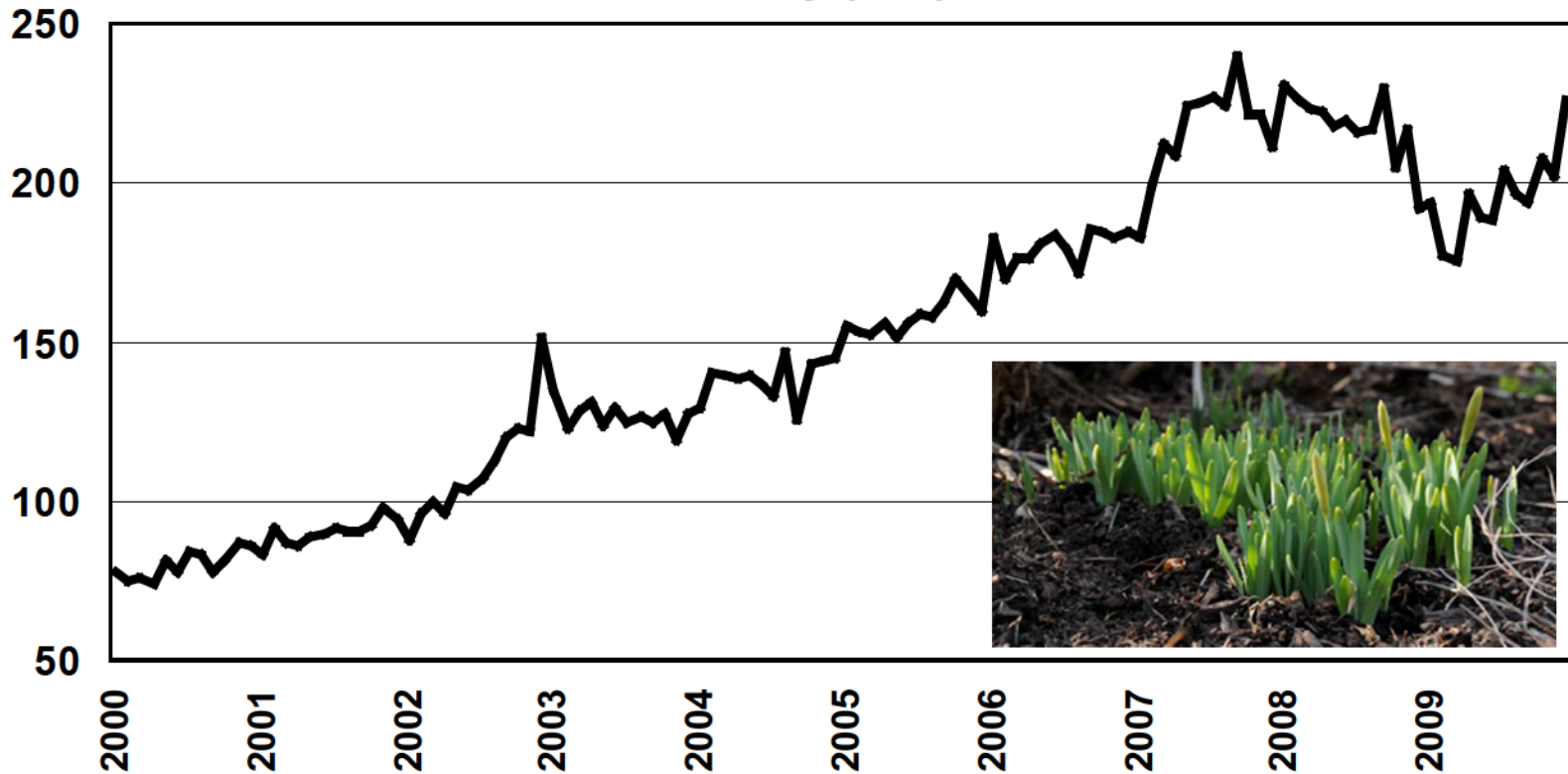
# Coastal Empire Economic Indicators

## Leading and Coincident Indices





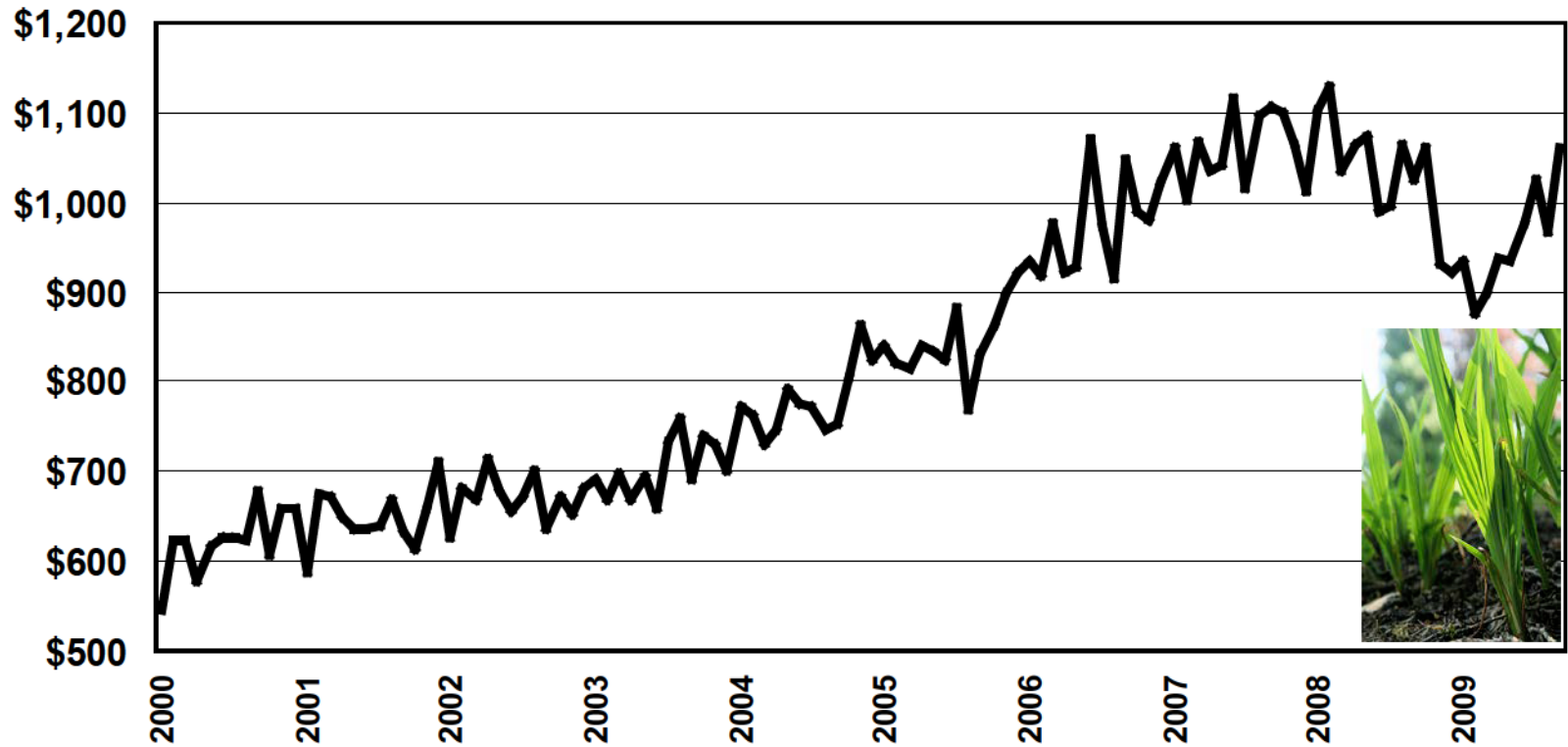
## GPA: Containers Handled (TEUs) Monthly (000)



Source: Georgia Ports Authority



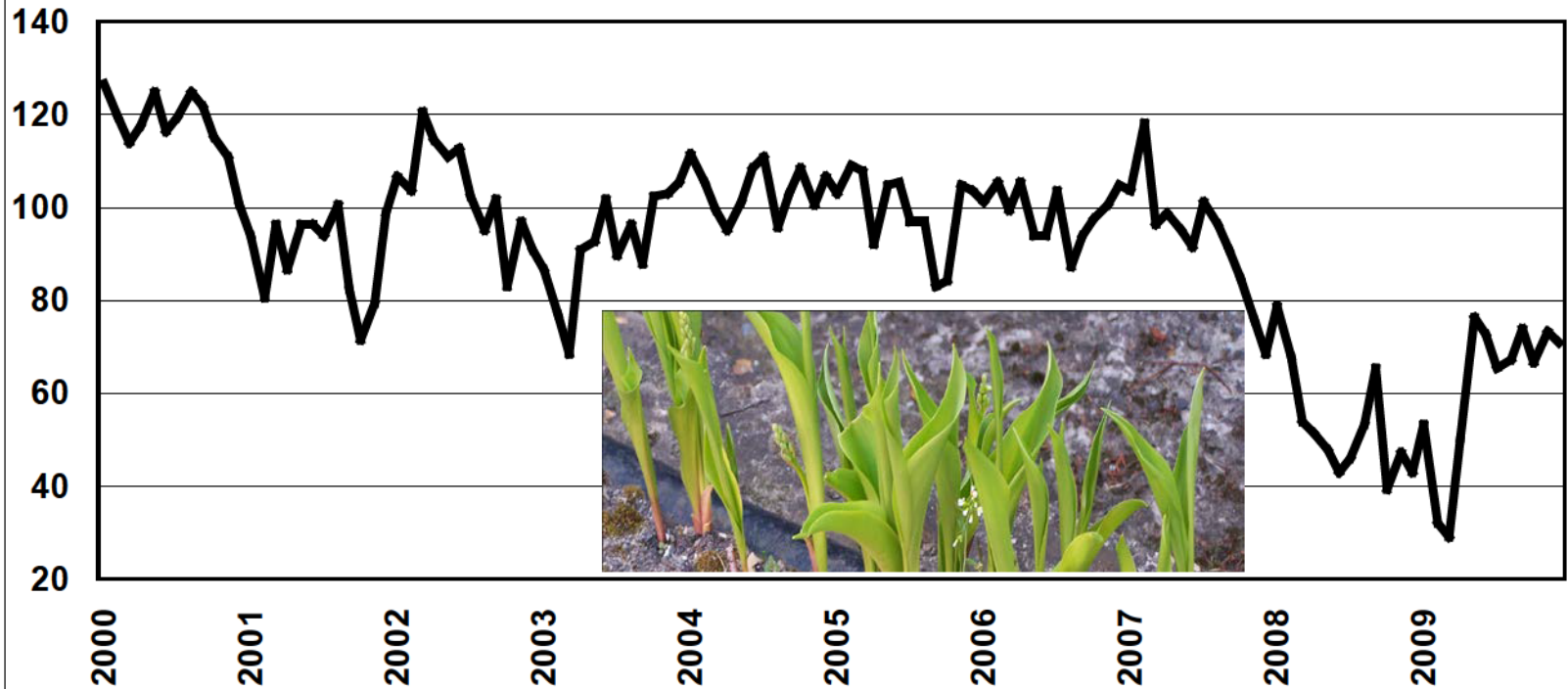
## Hotel Tax Receipts (\$000) Savannah and Chatham County



Source: City of Savannah & Chatham County

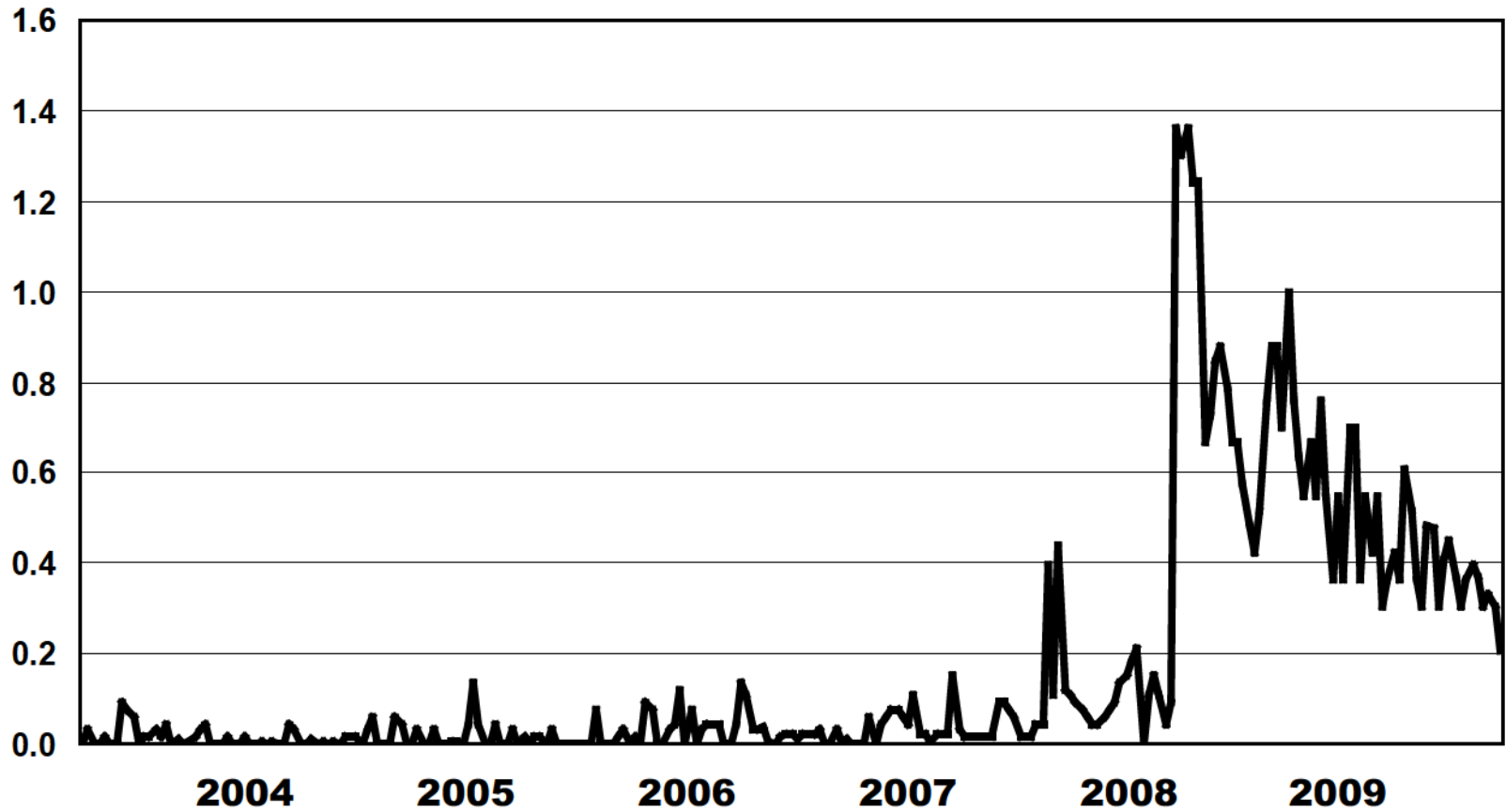


## Consumer Expectations In South Atlantic States (Index, 1985 = 100)



Source: The Conference Board

## "Great Depression" in News Articles



Source: Google Trends

# Economic Activity (GDP): Comparison of Downturns

- 1929-33: -27%      "The Great Depression"
- 2007-09: -3.7%      "The Great Recession"
- 1973-75: -3.2%      "The Nearly Great Recession"
- 1981-82: -2.6%      "The Kinda, Sorta Great Recession"
- 1990-91: -1.4%
- 2001:      -0.3%

# **Savannah MSA: Forecast Summary for 2010**

<b>Employment Growth:</b>	<b>0% to +0.25%</b>
<b>Unemployment Rate:</b>	<b>8.8%</b>
<b>Total Personal Income:</b>	<b>+2.5%</b>
<b>Population Growth:</b>	<b>+1.1%</b>

**Early 2010 will feel like 2009.**

**Employment will begin to stabilize slowly.**

**Growth expected for latter half of 2010.**

**Rebound in consumer expenditure is key.**





ARMSTRONG ATLANTIC STATE UNIVERSITY  
*75<sup>th</sup> Anniversary*



# *75th Anniversary*



# *Mark Your Calendar*



- Homecoming February 22 - 28
- 3 Days for AASU, March 30 - April 1
- Ribbon Cutting for Student Union, April 23
- Inauguration, September 17
- Full calendar on the new 75th site

# www.75.armstrong.edu



*Looking Back. Moving Forward.*  
**CELEBRATE 75 YEARS WITH AASU**



## 75TH HOME

ARMSTRONG THROUGH  
THE DECADES

CALENDAR OF EVENTS

HISTORY OF THE ARTS

ATHLETICS LOOKS BACK

STUDENT NEWSPAPER REFLECTS

VIDEO GALLERY

SHARE YOUR MEMORIES

ARCHIVES

GIVING OPPORTUNITIES

PLAY TRIVIA



## Featured Events

### Homecoming Week

Join us the week of February 22, 2010 for Armstrong Atlantic's Homecoming celebration. There will be events for everyone all week long including music showcases, tailgating, car shows and more! Visit the [Homecoming website](#) for full details!



## Photo Timeline

### CONNECT



AASU Alumni Association



Pirate Athletics

# *St. Patrick's Day Parade*



## **ST. PATRICK'S DAY & AASU**

**Two of Savannah's best traditions.**

For 75 years, we've played our part in Savannah's rich history. What makes us most proud, however, is that the best is yet to come. Happy St. Patrick's Day, Savannah.

*Here's to celebrating 75 more!*



ARMSTRONG ATLANTIC STATE UNIVERSITY  
[armstrong.edu](http://armstrong.edu)



ARMSTRONG ATLANTIC STATE UNIVERSITY