

Spring 2008

Spring 2008 AASU Enrollment Executive Summary

Armstrong State University

Follow this and additional works at: <http://digitalcommons.georgiasouthern.edu/armstrong-exec-sum>

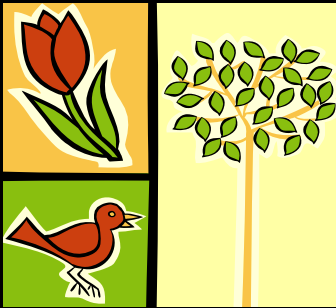
Recommended Citation

Armstrong State University, "Spring 2008 AASU Enrollment Executive Summary" (2008). *Armstrong Enrollment Executive Summaries*.
7.
<http://digitalcommons.georgiasouthern.edu/armstrong-exec-sum/7>

This other is brought to you for free and open access by the Armstrong Office of Institutional Research at Digital Commons@Georgia Southern. It has been accepted for inclusion in Armstrong Enrollment Executive Summaries by an authorized administrator of Digital Commons@Georgia Southern. For more information, please contact digitalcommons@georgiasouthern.edu.

Published by the
Office of Institutional Research

Spring 2008



ARMSTRONG ATLANTIC STATE UNIVERSITY

*AASU Compass Points...
Prelude to the Data Digest*

Data Provided by Board of Regents April 16, 2008	Undergraduate	Graduate	Overall Total
Enrollment, Spring 2008	5,688	782	6,470
Enrollment, Spring 2007	5,734	610	6,344
% Change in Enrollment	1%	28.1%	2%
Percent Full-Time*	64.2 %	32.9 %	60.1%
Percent Part-Time*	35.8 %	67.1 %	39.9%
FTE, Spring 2008**			5411
FTE, Spring 2007**			5230
% Change in FTE			5.3%
Percent Female	66.9 %	79.6 %	68.4%
Percent Male	33.1 %	20.4 %	31.6%

* Full-time status is based upon 12 or more SCH for undergraduates and 9 or more SCH for graduates. Part-time is less than 12 for undergraduates and less than 9 for graduates.

**FTE is the Board of Regents definition of full-time equivalency.

Enrollment by...

Level of Classification

Freshmen/ Joint	1,558	24%
Sophomore	1,237	19.1%
Junior	1,173	18.1%
Senior	1,534	23.8%
Transient/ Other	188	2.9%
Graduate	782	12%

Ethnic Group

American Indian/ Alaskan Native	25	0.4%
Asian/ Pacific Island	205	3.1%
Black/Non-Hispanic	1,485	23%
Hispanic	232	3.6%
Multi-Racial	417	6.4%
White/Non-Hispanic	4,106	63.4%

Type of Residency

Georgia Residents	5,552	85.8
Out-of-State	818	12.7
Foreign Students	100	1.6

New Student Classification

Joint Enrollment	9	1.3%
Beginning Freshmen	165	24.3%
Transfer Freshman	84	12%
Transfer Sophomore	87	13%
Transfer Junior	82	12%
Transfer Senior	35	5.3%
Transient/Other	59	8.9%
Graduate	156	23%
Total	677	

Average Age

Undergraduate	25.9
Graduate	34.4

Learning Support Courses

(Unduplicated Headcount)

Due to System Requirement	136
Due to Institution Requirement	53
Due to Voluntary Requirement	41
Total	230