

# Reflector

1932

Georgia Southern University

Follow this and additional works at: <https://digitalcommons.georgiasouthern.edu/reflector-yearbook>



Part of the [Higher Education Commons](#)

---

## Recommended Citation

Georgia Southern University, "Reflector" (1932). *Reflector Yearbook*. 6.  
<https://digitalcommons.georgiasouthern.edu/reflector-yearbook/6>

This book is brought to you for free and open access by the Student Media at Digital Commons@Georgia Southern. It has been accepted for inclusion in Reflector Yearbook by an authorized administrator of Digital Commons@Georgia Southern. For more information, please contact [digitalcommons@georgiasouthern.edu](mailto:digitalcommons@georgiasouthern.edu).

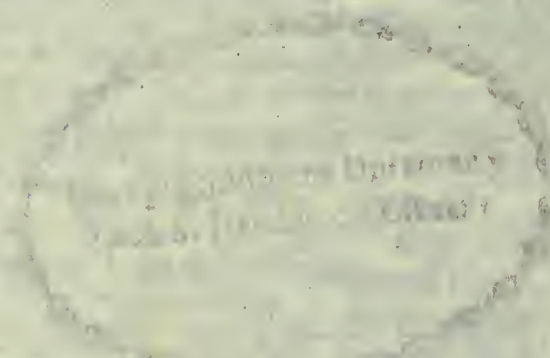
The  
Reflector  
1932

RESERVE  
LH  
1.G43  
R4  
1932




Georgia Southern College

Zach S. Henderson Library









Digitized by the Internet Archive  
in 2014

<https://archive.org/details/reflector1932na>



The  
Reflector  
1932



COPYRIGHT

1 9 3 2

MARY JANE BOWEN

*Editor-in-Chief*



The  
Reflector  
1932

*Published*

*By*

Senior – Junior

*and*

Sophomore Classes

SOUTH GEORGIA  
TEACHERS COLLEGE  
COLLEGEBORO, GEORGIA





# **D**edication

THIS VOLUME is dedicated to Carrie Law Clay, our teacher of literary vision, who has ever sought to awaken our best thoughts and wholesome impulses by leading us to know and appreciate the pure and beautiful in literature and life. Her thoughtful, sympathetic understanding of our needs first inspired our love and helped us appreciate her noble character and genuine spiritual earnestness. She so habitually expresses herself in beautiful thoughts and deeds that we feel

*"There's nothing ill can dwell  
in such a temple."*





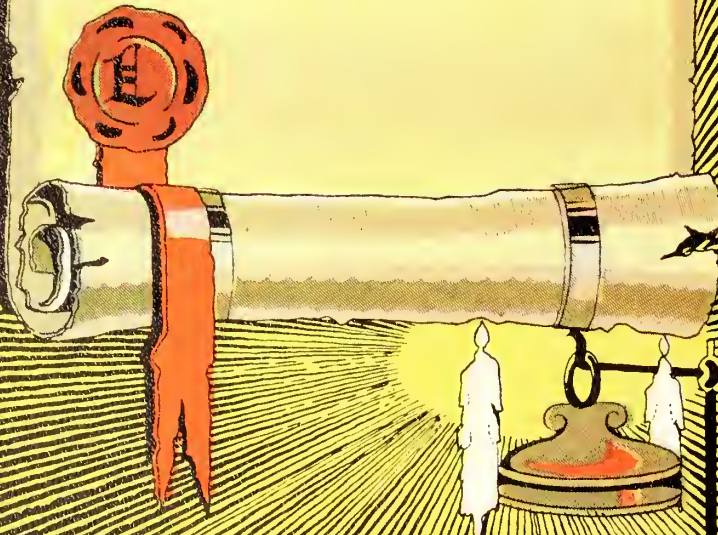
CARRIE LAW CLAY

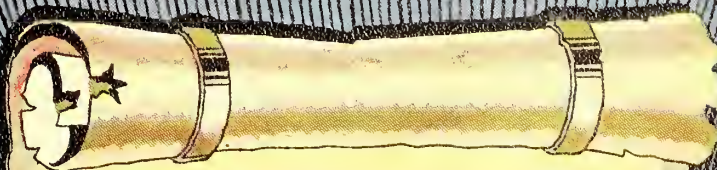




# Foreword

THE STAFF of 1932 in compiling this the seventh edition of the *Reflector*, has endeavored to portray the various classes and extra - curricular activities of our pleasant college days. In spite of its reduced size, it comes to you with the hope that it will serve to enrich those memories cherished by each student.





# ontents

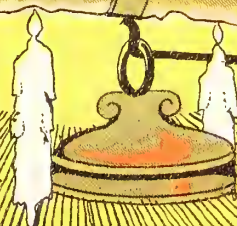
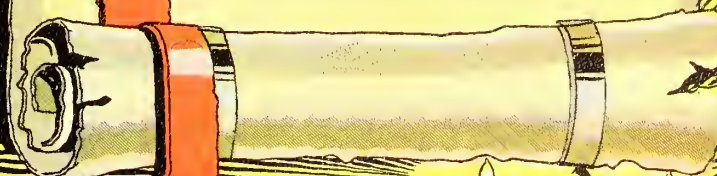
BOOK I  
CAMPUS

BOOK II  
FACULTY

BOOK III  
CLASSES

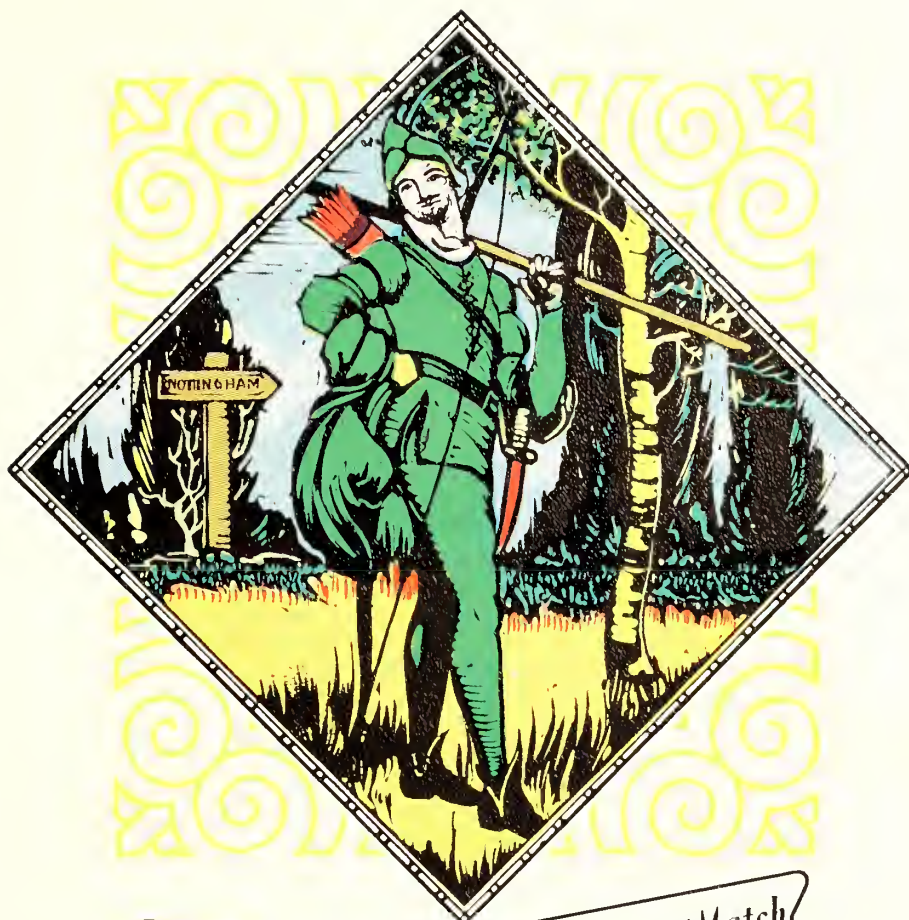
BOOK IV  
ACTIVITIES

BOOK V  
ATHLETICS









Robin Hood goes to the Shooting Match

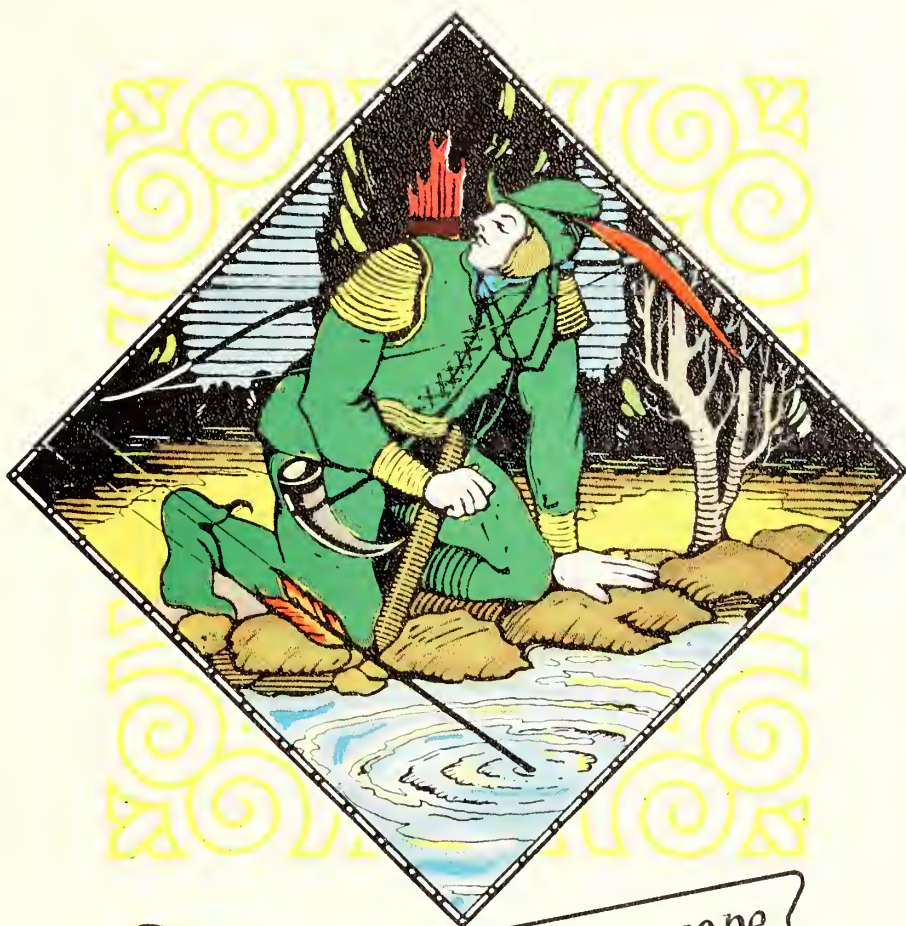
Campus Scenes











Robin hath a narrow escape

Faculty



#### GUY HERBERT WELLS

He received his A.B. degree from Mercer, 1911; his Master's degree from Columbia University, 1925. Since that time he has been doing graduate work at Peabody College. He was Superintendent of Schools at Lumpkin, Ga., 1915-'18; Richland, Ga., 1918-'22; Eastman, Ga., 1922-26. In 1926 he was elected President of the South Georgia Teachers College. During this time he organized the State Superintendents' Association and has served as Director of the Georgia P.-T. A. He is President of the G. E. A. He is a Phi Delta Kappa man and a contributor to the Georgia Educational Journal.



#### ZACK S. HENDERSON

He received his B.S. degree 1922, from Piedmont College. He was at Piedmont Demonstration School in 1922-'23; Coach and Teacher at Plant City High School, summer of '23, '24, '25; Principal and Coach at Eastman High. In the spring of 1927 he was elected Dean of the South Georgia Teachers College. Attended Columbia University in the summer of 1924, '26, '27, '28 and received his Master's degree in October, 1928. He was granted a leave of absence in 1931 to do work on his Doctor's degree.



#### HOY TAYLOR

He received his A.B. degree from Trinity College in 1906; A.M. degree from Columbia in 1913; Ph.D. degree from Peabody in 1931; Phi Beta Kappa. He was teaching at Cary High School, Cary, N. C., in 1906-'07; Principal, Biscoe, 1907-'13; Superintendent of Schools, Greenville, N. C. in 1913-'18; Franklinton, 1919-'27; Principal High School, Wilson, 1927-'28; Instructor, West Kentucky State Teachers College, 1929-'31; Acting Dean of S. G. T. C., 1931-'32. He was Secretary of the North Carolina City Superintendents in 1917-'27. He is a member of the Phi Delta Kappa.







DAVIS NYE BARRON, B.S., M.A.

*Professor of Sociology*

MRS. H. S. HANNER, A.B., B.M.

*Teacher of Music*

J. E. CARRUTH, A.B., M.A.

*Professor of Education*

CARRIE LAW CLAY, B.S., M.A.

*Professor of English*

ROBERT DONALDSON, A.B.

*Professor of Journalism*

W. S. HANNER, B.S., M.A.

*Professor of Chemistry*

MRS. JESSIE O. JOHNSON, A.B.

*Teacher of Expression*

HESTER NEWTON, A.B., B.S., M.A.

*Professor of History*

VIOLA PERRY, B.S., M.A.

*Registrar and Mathematics*

ELEANOR RAY, A.B.

*Librarian*

TALMAGE ROBERTS, A.B., B.S.

*Professor of Bookkeeping*

ALVIN ARTHUR SINGLEY, A.B., M.A.

*Professor of Education*

MALVINA TRUSSELL, B.S., M.S.

*Professor of Biology*

EMILY SIMPSON, B.S.  
*Physical Education Director*

B. L. SMITH, B.S.  
*Coach*

T. A. WITCHER, A.B., M.A.  
*Professor of French*

MAMIE VEAZEY, A.B., B.M.  
*Dean of Women*

MARIE WOOD, A.B.  
*Training School*

MRS. R. E. FULLILOVE  
*Manager of Dining Hall*

MAE MICHAEL  
*Secretary*

MR. R. L. WINBURN  
*Bookkeeper*

MILDRED MURPHY, A.B.  
*Physical Education*

SARA HARVEY MANN, B.S., M.A.

RUTH BOLTON, B.S.  
*Teacher of Home Economics*

CORINNE Gerdine, B.S., A.M.  
*Training School*

MILDRED CAMPBELL, B.S.  
*Training School*

MRS. E. L. BARNES  
*Instructor in Music*



## HISTORY OF SOUTH GEORGIA TEACHERS COLLEGE

On a beautiful spring day in 1932, the sun was beaming with all its might on a group of students who had come out on the campus to study. However, study was the least of their worries for the birds were calling and singing to each other and the grass was cool and fresh.

The group had been seated only a short time when they noticed a stranger stop as though startled, then slowly start down the flag walk looking around with a wondering stare. By the time he reached the flag pole, a senior from the group spoke to him.

"Good morning. Fine day, isn't it?"

As if in a trance the stranger answered: "Yes. But things here have certainly changed."

"Oh, then you have been here before?" asked the student.

"Yes, twenty years ago. I received my diploma from here in 1912."

"Gee, I don't wonder that you were astonished when you saw our campus. Has it changed much?"

"Let us sit here and I will tell you how it was when I was here. Would you be interested?"

"Sure! I have often wondered how this school looked in the beginning."

"When the bill for a First District A. & M. School was passed in 1906, Bulloch County offered the largest bid and hence the school was located on a 300-acre farm, one mile from Statesboro. The town gave \$25,000, installed and furnished lights and water free for ten years. The school opened February 1, 1908, with Professor J. Walter Hendricks as principal. It was supported by oil and fertilizer inspection fees, but in 1911 an appropriation bill was passed placing the school on an annual maintenance appropriation.

"This beautiful campus was just an open field where the boys experimented. A dirt road led to the academic building and over near that fire plug was our well. The academic building is the same except it was bare for Professor Harper planted that ivy in 1912. The dining hall was erected in 1912, for we had been taking our meals in the little white cottage down the road. What is different about the dormitories?"

"The new third story was completed in January. It was only two stories high with a flat roof."

"That's it! I like them better. In the good ole A. & M. days a special course was offered to teachers. The State Department of Education and the University of Georgia agreed with the people of this section that there was a vital need for a Normal School in Southeast Georgia. Accordingly a bill was passed August 18, 1924, converting the First District A. & M. School into the Georgia Normal School.

"In 1929 I noticed that the Legislature again had changed the name to South Georgia Teachers College and given it the right to confer degrees."

"Did you know that last year the College was given a B rating as a four-year Teachers College?"

"That is indeed creditable. What is that new building through there?"

"That is our new gymnasium. It's a dandy, too. We started using it after Christmas and we are mighty proud of it. Want to see it?"

"I want to see everything around here. Well, it is certainly well equipped. I spent many hours in field labor over there."

"That reminds me of the work we did last spring on the swimming pool. We will go see it now."

"Did you know," asked the student, "that the Board of Regents assumed control of the College in January? Sorry, class bell! Enjoyed our talk!"

The graduate bade him good day and strolled slowly back to the administration building.



Each would engage in Cudgel Play

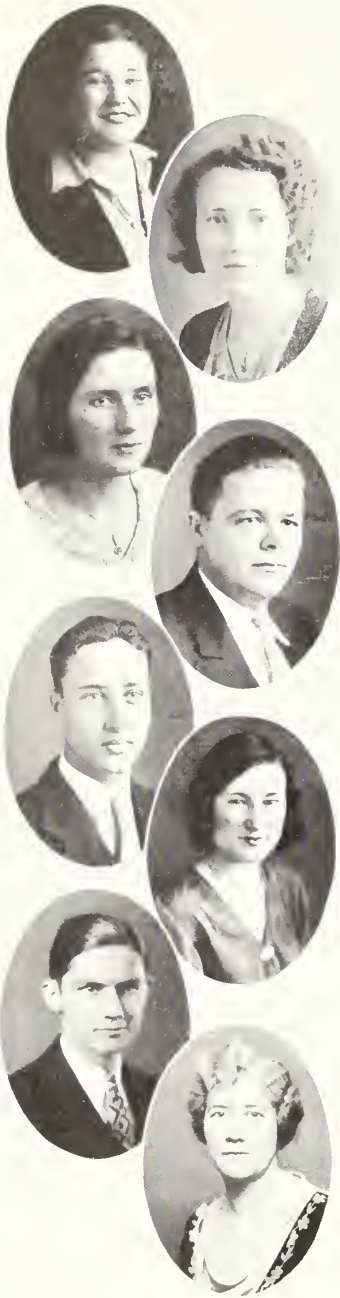
Classes







Senior



## SENIOR CLASS OFFICERS

ADDIE B. PARKER . . . . . *President*

LUCILE SUDDATH . . . . . *Vice-President*

MARY JANE BOWEN . *Secretary and Treasurer*

HUBERT DEWBERRY . *Student Council  
Representative*

PARNELL ENECKS . *Student Council  
Representative*

MAMIE RINER . *Student Council Representative*

MR. ROBERT F. DONALDSON . *Faculty Advisor*

MISS CARRIE LAW CLAY . . *Faculty Advisor*

MYRTICE ALDERMAN  
STATESBORO, GA.

Oglethorpe, '29-'32; H. E. Club, '32; Day Student.

*"You'll find her in the jokes,  
You'll find her in the game;  
But no matter where you find her  
She's always just the same."*

MARY JANE BOWEN  
PORTAL, GA.

Bessie Tift, '29-'30; Secretary Senior Class; REFLECTOR Staff Editor-in-Chief, '32; Soccer, '31; Stephens, '31-'32, Debater, '32; Y. W. C. A. Cabinet; Math Club; Basket-ball, '32.

*"Pep, wisdom, joy, everything worth while,  
She has them plus a pleasant smile."*

JOHN GAYLORD BURGESSON  
HOLDREGE, NEBRASKA

University of Nebraska, '31; Iota Pi Nu; President Stephens, '32; Student Council, '32; Science Club, '30-'32; Y. M. C. A., '30-'32; Football, '31; Basket-ball, '32; *George-Anne* Staff; Most Athletic, '32.

*"Full of fun, full of pep,  
In athletics he won his rep."*

LOIS BURKE  
DOVER, GA.

Dramatic Club, '29-'30; Stephens, '29-'32; Treasurer, '31; Y. W. C. A. Cabinet, '30; Vice-President, '32; House Council, '30-'32; Soccer, '30-'32; Treasurer Junior Class; Science Club, '31-'32; Math Club, '30-'32.

*"She doeth little kindnesses, which most leave  
undone, or despise."*

JOSIE MAE CLARK  
GARFIELD, GA.

Y. W. C. A., '29-'32; Oglethorpe, '29-'32; Glee Club, '30-'32; Treasurer of Junior Class, '31; Math Club, '30-'32.

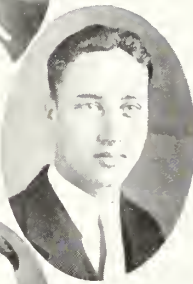
*"Life has no dim and lonely spots."*





HUBERT DEWBERRY  
STILLMORE, GA.

Iota Pi Nu; Stephens, Chaplain, '29; President, '30; Vice-President, '31; Science Club, '29-'32; Bachelors Club, '30-'32; Secretary, '31; Glee Club, '30-'32; Business Manager, '31-'32; Y. M. C. A., '30-'32; Vice-President, '30; Secretary, '31; REFLECTOR Staff, '30; Student Council, '31; Varsity Club, '29-'31; Football, '29-'32.  
*"Rare compound of quality, noble and true,  
With plenty of sense and good humor, too."*



PARNELL ENECKS  
ROCKYFORD, GA.

Oglethorpe, '29-'32; Math Club, '30-'32; Student Council, '32; Bachelors Club, '30-'32.  
*"True merit is like a river, the deeper it is the less noise it makes."*



RUPERT FOREHAND  
LILLY, GA.

Day Student.  
*"Knowledge is power."*



RUBY JOINER  
STATESBORO, GA.

Oglethorpe, '28-'29, '31-'32; Y. W. C. A.; H. E. Club, '32.  
*"Her favorite temple is an humble heart."*



PEARL OLLIFF  
STATESBORO, GA.

Oglethorpe, '29-'32; Secretary, '30; Debater, '32; Y. W. C. A., '30-'32; Secretary Junior Class, '32; Dramatic Club, '29-'30.  
*"She has a heart with room for every joy."*



LUCILE SUDDATH  
PORTAL, GA.

Stephens, '29-'32; Science Club, '29-'32; Vice-President, '31; Treasurer, '32; Y. W. C. A. Cabinet, '30-'32; President House Council, '32; Student Council, '29-'31; President H. E. Club, '32; Basket-ball Varsity, '29-'32; Captain, '31; Soccer, '29-'32; REFLECTOR Staff, '31; Most Athletic, '30; May Queen, '31; Miss S. G. T. C., '32.  
*"Happy, thoughtful, kind and true,  
There is no favor she will not do."*



VERA McELVEEN

BROOKLET, GA.

Stephens, Secretary, '30, Vice-President, '31, Debater, '29-'31; *George-Anne* Staff, '29-'30; Math Club, '30-'32; President, '31; Science Club, '29-'32; Secretary, '32; Y. W. C. A. Cabinet, '30-'32; H. E. Club, Secretary, '31-'32; House Council, '32; Soccer Captain, '31-'32; Vice-President Junior Class, '32; REFLECTOR Staff, '32.

*"High erected thoughts seated in the heart of courtesy."*

ADDIE B. PARKER

MACON, GA.

Oglethorpe, '29-'32; Debater, '31-'32; President, '30; Y. W. C. A., President, '31; Student Council, '32; *George-Anne* Staff; President Senior Class, '32; Most Original, '30; Miss S. G. T. C., '31.

*"A smile for all, a getting glad,  
A lovable jolly way she had."*

MAMIE RINER

WRIGHTSVILLE, GA.

Oglethorpe, '29-'32; Vice-President, '32; Glee Club, '29; Y. W. C. A., '29-'32; Math Club, '30-'32; House Council, '31; Student Council, '31-'32; Varsity Basket-ball, '29-'32; Captain, '32; Manager, '31; Soccer, '29-'32; Most Athletic Girl, '31-'32.

*"No honor she seeks, no work she declines,  
And convinced she is needed no hardship resigns."*

DORA SMITH

SYLVANIA, GA.

Stephens; Secretary, '30; Vice-President, '30; *George-Anne* Staff; Science Club, '29-'32; Secretary, '30; Y. W. C. A. Cabinet, '29-'32; Treasurer, '31; Secretary Sophomore Class; Student Council; Soccer, '30-'32; REFLECTOR Staff.

*"The curious questioning eye that plucks the heart of every mystery."*

SARAH SMITH

STATESBORO, GA.

Stephens, '27-'32; Science Club, '27-'29; Varsity Basket-ball, '28-'32; Soccer, '31; REFLECTOR Staff, '32; Most Intellectual, '32.

*"The hand that follows intellect can achieve."*

LOIS JUANITA ROZIER

STILSON, GA.

H. E. Club, '32; Stephens, '29-'32; Y. W. C. A., '32.

*"The unspoken word never does harm."*



## GEORGIA'S SEVEN NATURAL WONDERS

ROY STYLES

*Extract from the Bunce Prize Winning Essay*

Georgia has many features which might be called "natural wonders," as Miss Ella May Thornton pointed out in a recent article, but the seven mentioned herein are chosen either because they are unparalleled or because they excel similar phenomena in other places.

The Amicolola Falls in Dawson County, to which the Creek Indians gave the name of "tumbling waters" are the highest falls in the State of Georgia, the water rushes over the falls and drops about 729 feet. The falls themselves obstruct the view from the top; therefore, it is best to inspect them from the foot of the falls, where the colors of the rainbow stand out vividly as the rays of the sun hit this silvery spray.

In Southeastern Georgia there lies one of the wonder spots of the United States, Okefenokee Swamp, a land of scenic beauty and grandeur; a land of danger, filled with quivering sand and bottomless lakes; a land of legends, filled with Indian relics and caves. Both the St. Mary's River and the far sung Suwannee River have their head waters in the Okefenokee Swamp.

The marble deposit in Pickens County is known as the largest single vein of marble known anywhere in the world. Geologists tell us that the valley where this richest deposit is, lies two and one-half miles long and one-half mile wide, but the depth has never been determined.

Surely Stone Mountain should be included among the natural wonders of Georgia, for it is the largest solid body of exposed granite in the world, being almost a mile high and over seven miles in circumference at the base. Upon the north side is being carved a memorial to the Confederacy, and under this memorial a large amphitheater is to be cut into the base of the mountain, and here will be stored the historical records and relics of Georgia.

Tallulah Falls, in Rabun County, offers one of the greatest scenic marvels of Georgia. The canyon is more than a thousand feet deep, the river rushes over the rapids giving much beauty to the falls, and to the gorge itself. This gorge rivals the scenic beauty of the Grand Canyon of the Colorado.

Off the Southern coast of the State south of Brunswick is found Jekyll Island where the virgin forests have been preserved in their primeval state and wild life flourishes almost as of yore.

Warm Springs, in Meriwether County, has long been famous as a health resort. Situated in the chain of the Appalachians around Pine Mountain, amid stately evergreens, Warm Springs has an altitude varying from one thousand to twelve hundred feet above the level of the ocean. From the heart of the hills gushes a water that has had a never-varying temperature of 90 degrees. This water, rich with a mineral content, is so chemically composed that it is very invigorating and bracing. The water flows from the springs at a volume of 1,800 gallons per minute; has a blueness resembling the sea waters at Nassau and Wai-ki-ki; is without odor or unusual taste. Warm Springs is proving to be an ideal place for the after treatment of one of our most costly human scourges, infantile paralysis.



Junior



## JUNIOR CLASS OFFICERS

RALPH STEPHENS . . . . . *President*

VERA McELVEEN . . . . . *Vice-President*

PEARL OLLIFF . . . . . *Secretary*

LOIS BURKE . . . . . *Treasurer*

JOHN BURGESSON . *Student Council*  
*Representative*

DORA SMITH . *Student Council Representative*

J. E. CARRUTH . . . . . *Faculty Adviser*

ELEANOR RAY . . . . . *Faculty Adviser*



ROBERT LEE MARR  
WAYCROSS, GA.

Oglethorpe, '29-'32; Y. M. C. A., '31-'32;  
*George-Anne* Staff, '29-'39; REFLECTOR Staff,  
'31-'32; Professional Club, '31-'32.

*"As merry as the day is long."*

WILMA NEW  
OLIVER, GA.

Stephens, '29-'32; Y. W. C. A., '29-'32; Treas-  
urer House Council, '30-'31; H. E. Club, '29-  
'32; Basket-ball Varsity, '29-'32; Soccer Champs,  
'29-'32.

*"A mind at peace with all below."*

JOHN ELLIS ROUNTREE  
SUMMIT, GA.

Football, '29-'30; Track, '29-'30; Stephens,  
'29-'32; Science Club, '29-'32; Y. M. C. A., '30-  
'32.

*"Make the most of good fellowship."*

RALPH STEPHENS  
WRENS, GA.

Iota Pi Nu, '32; President Y. M. C. A., '31-  
'32; President Junior Class, '31-'32; President  
Bachelors Club, '31-'32; President Sophomore  
Class, '30-'31; Business Manager, REFLECTOR,  
'30-'31; Student Council, '30-'31-'32; Stephens,  
'29-'32; Science Club, '29-'32; Treasurer Science  
Club, '31; Bachelors Club, '30-'32; Y. M. C. A.,  
'30-'32; Editor of *George-Anne* Staff, '29-'30.

*"None but himself can be his parallel."*

GEORGE THRIFT  
COBBTOWN, GA.

Football, '29-'32; Science Club, '29-'32; Math  
Club, '30-'32; Secretary and Treasurer, '31-'32;  
Varsity Club, '29-'32; Treasurer, '30-'31; Y. M.  
C. A., '30-'32; Treasurer, '31-'32; Club Editor,  
REFLECTOR Staff, '31-'32.

*"Is the master of his time."*

LILLIAN VANDIVER  
SUMMIT, GA.

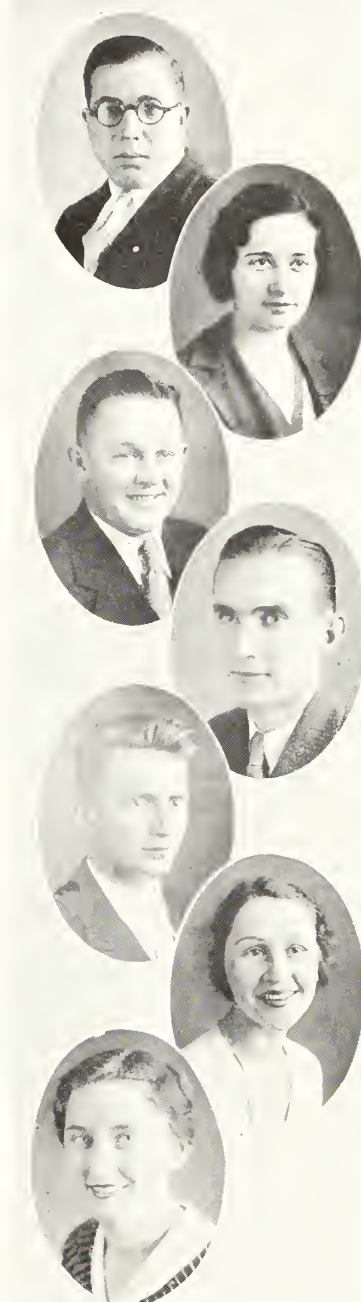
Stephens, '30-'32; Secretary, '31; Y. W. C. A.,  
'30-'32; Science Club, '31-'32; Glee Club, '31-'32.

*"But the sweetest thing is the clasp of a hand  
of a friend that is tried and true."*

IMOGENE WATERS  
STATESBORO, GA.

Stephens, '30-'32; Secretary, '32; Y. W. C. A.,  
'30-'32; H. E. Club, '31-'32; Glee Club, '30-'32.

*"Friendly, generous and good natured."*



## ALMA MATER

*Down among the murmuring pine trees,  
Where old nature smiles,  
Old T. C. holds up a standard,  
Known for miles and miles.*

### Chorus

*Lift the chorus. Speed it onward,  
Ne'er her standard fail,  
Hail to thee our Alma Mater,  
Hail T. C. All Hail.*

*From the blue and broad Atlantic,  
Balmy breezes blow,  
Wafting for old T. C.'s spirit  
May she ever grow.*

## HYMN TO T. C.

ALMA SIMMS.

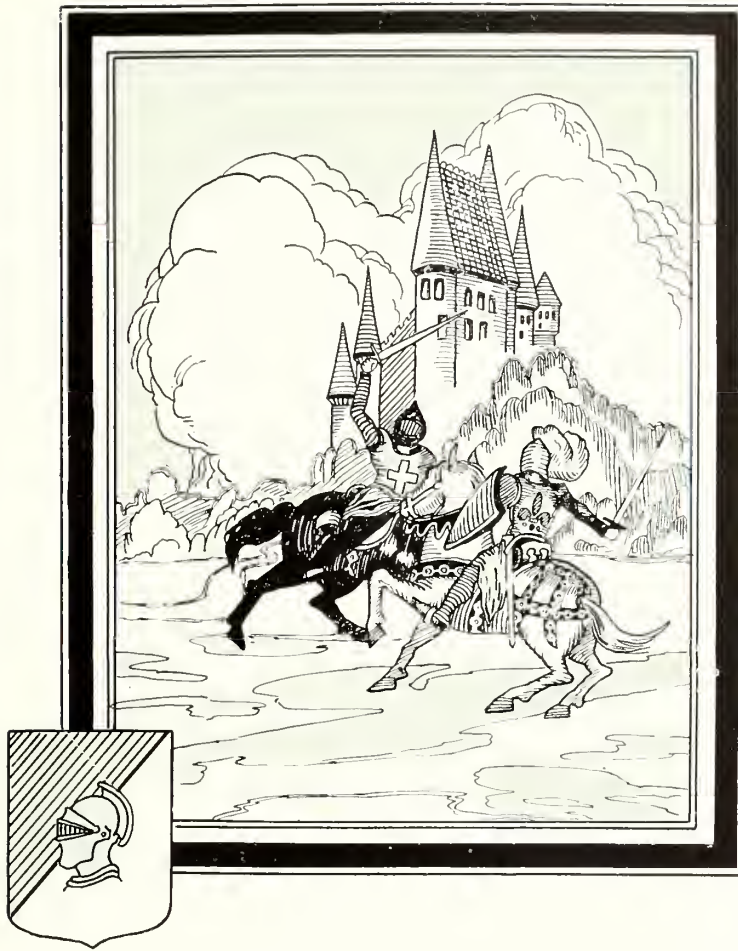
*Hail to thee, O, T. C.!*  
*Lift your banners high,*  
*That men of future ages,*  
*May see them nobly fly.*

### Chorus

*Onward ever, T. C.,*  
*We are all for you,*  
*To you, dear Alma Mater,*  
*We ever will be true.*

*Ideals high and noble,*  
*Will to dare and do,*  
*A growing love of service,*  
*T. C., we owe to you.*

*Days will fill with beauty,*  
*Hope will banish fears,*  
*As T. C.'s spirit marches,*  
*Growing with the years.*



Sophomore

## SOPHOMORE CLASS OFFICERS

CHARLES SHAPE . . . . . *President*

HAZEL THOMPSON . . . . . *Vice-President*

JOSEPHINE MURPHY . *Secretary and Treasurer*

BEULAH DAVIS . . . . . *Student Council*

MR. HANNER . . . . . *Faculty Adviser*

MISS TRUSSELL . . . . . *Faculty Adviser*



LONNIE BELL BLAND  
STATESBORO, GA.

Day student.

*"And I oft have heard defended  
Little said is soonest mended."*

MAE BLOUNT  
VIDALIA, GA.

Stephens, '30-'32; Y. W. C. A., '30-'32; H. E. Club, '31-'32.

*"To err is human; to forgive divine."*

JAMES CARRUTH  
COLLEGEBORO, GA.

Stephens, '30-'32; Treasurer, '31; Vice-President, '32; Math Club, '30-'32; Science Club, '31-'32; Y. M. C. A., '30-'32; Student Council, '30-'31; President Freshman Class, '30-'31.

*"Great thoughts, great feelings  
came to him like instincts unawares."*

ALMA JIM DANIELS  
BELLVILLE, GA.

Stephens, '30-'32; Y. W. C. A., '30-'32; Y. W. C. A. Cabinet, '31-'32; Vice-President, House Council, '31-'32.

*"The hand that hath made you fair hath made  
you good."*

BEULAH DAVIS  
BROOKLET, GA.

Stephens, '30-'32; Secretary, '30-'31; Science Club, '30-'32; Vice-President, '31-'32; Math Club, '30-'32; Y. W. C. A., '30-'32; Treasurer, '31-'32; Student Council, '30-'31; Secretary, '30-'31; *George-Anne* Staff, '30-'31.

*"Few things are impossible to determination and  
skill."*

CLYDE DAUGHTRY  
PORTAL, GA.

Y. M. C. A., '30-'32; Day Student.

*"He holds his seat—a friend to man."*

KATHRYN ENECKS  
ROCKYFORD, GA.

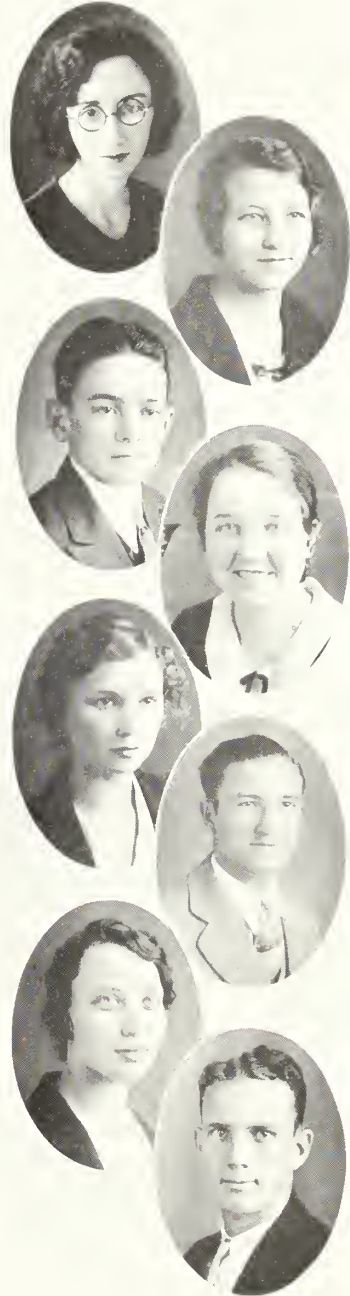
Oglethorpe, '30-'32; President, '31; Y. W. C. A., '30-'32; Y. W. C. A. Cabinet, '31-'32; REFLECTOR Staff, '31-'32.

*"The first element of success is the determination to succeed."*

CLIFFORD HALE  
BAINBRIDGE, GA.

Football, '31-'32; Most Handsome, '31-'32; Science Club, '31-'32; Y. M. C. A., '31-'32.

*"Ever loyal, ever true to whatever task he has  
to do."*





GENIE MAE HARWELL  
ANDREWS, S. C.

Stephens, '30-'32; Popular Science Club, '31-'32; Art Editor, REFLECTOR Staff, '31-'32; Y. W. C. A., '30-'32.

*"Her heart is as true as steel."*

BENJAMIN EARNEST HOLLAND  
STATESBORO, GA.

Entered from University of Georgia, '31; Orchestra; Oglethorpe, '31-'32; Iota Pi Nu.

*"I am the master of my fate;  
I am the captain of my soul."*

OLLIE MAE JERNIGAN  
STATESBORO, GA.

Oglethorpe, '30-'32; Y. W. C. A., '30-'32.

*"Truth hath a quiet breast."*

AGNES JOHNSON  
WRENS, GA.

Stephens, '31-'32; Y. W. C. A., '31-'32; H. E. Club, '31-'32.

*"She that was ever fair and never proud  
Had a tongue at will, yet was never loud."*

OSCAR JOINER  
VIDALIA, GA.

Stephens, '30-'32; Chaplain, '31; Treasurer, '31; President, '32; Science Club, '31-'32; Y. M. C. A., '31-'32; Student Council, '31-'32; Treasurer Student Council, '31-'32; President Freshman Class, '31; Bachelors Club, '31-'32; Iota Pi Nu.

*"Wise men say nothing in dangerous times."*

ROUNTREE LEWIS  
STATESBORO, GA.

Day Student; Oglethorpe, '30-'32; Treasurer, '31; Glee Club, '30-'32; President, '32.

*"His friendship is well worth cultivating."*

ALMA RETA LINDSEY  
STATESBORO, GA.

Oglethorpe, '30-'32; Secretary, '32; Y. W. C. A., '30-'32; Cabinet, '31-'32; Varsity Basketball, '32; REFLECTOR Staff, '31-'32.

*"Wise to resolve and patient to perform."*

KATHRYN LOVETT  
SYLVANIA, GA.

Stephens, '30-'32; Secretary, '31; Science Club, '30-'32; Cheer Leader, '32.

*"The two noblest things which are sweetness and light."*

MRS. GERTRUDE MARTIN  
STATESBORO, GA.

Math Club, '31-'32.  
*"A true friend to the true."*

MAJORIE McDARIS  
SUMMIT, GA.

Stephens, '31-'32; Y. W. C. A., '31-'32; H. E.  
Club Treasurer, '31-'32.  
*"An unextinguished laughter shakes the skies."*

I. D. NICHOLS  
SCREVEN, GA.

Oglethorpe, '30-'32; Debater, '30-'31; Treas-  
urer, '31-'32; Math Club, '30-'32; Vice-Presi-  
dent Math Club, '31-'32; Y. M. C. A., '30-'32;  
Bachelors Club, '31-'32; Glee Club, '30-'32.  
*"Men of few words are the best men."*

RUTH PEEBLES  
STATESBORO, GA.

Stephens, '31-'32; Y. W. C. A., '31-'32; Math  
Club, '31; Secretary and Treasurer Freshman  
Class, '31; Most Beautiful Girl, '30-'31.  
*"Better be small and slim than large and cast a  
shadow."*

MILDRED PROCTOR  
SUMMIT, GA.

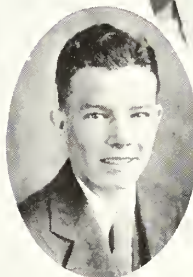
Stephens, '31-'32; Y. W. C. A., '31-'32; H. E.  
Club, '31-'32; Corresponding Secretary H. E.  
Club, '31-'32.  
*"With mirth and giggle let old wrinkles come."*

MARY GEORGE RAYFORD  
VIDALIA, GA.

Stephens, '31-'32; Y. W. C. A., '31-'32.  
*"There is nothing about her you forget."*

LEHMAN FRANKLIN  
PULASKI, GA.

Stephens, '31-'32; Y. M. C. A., '31-'32; Band,  
'32; Glee Club, '32.  
*"A fig for him who frets."*





ALMA SIMMS  
LANIER, GA.

Y. W. C. A., '32; Stephens, '32; H. E. Club.  
*"Truth needs no flower of speech."*



FLORICE STRICKLAND  
MERSHON, GA.

Bessie Tift, '31; Stephens, '32; Y. W. C. A.  
*"The gentle mind by gentle deed is known."*



CHARLES SHAFE  
ATLANTA, GA.

Iota Pi Mu; Stephens, '31-'32; Science Club;  
Football; Bachelors; Y. M. C. A.; President  
Sophomore Class, '32; Student Council, '31-'32;  
President, '32.  
*"Has a great joyous laughter with much love."*



HAZEL THOMPSON  
SCREVEN, GA.

Oglethorpe, '31-'32; Y. W. C. A., '31-'32;  
Secretary, '32; Glee Club, '31-'32; House Coun-  
cil, '32; Vice-President Sophomore Class, '32.  
*"Not merely to exist but to amount to some-  
thing."*



NAN TODD  
MITCHELL, GA.

H. E. Club, '32; Y. W. C. A., '32; Stephens,  
'32.  
*"Take the world as it is, not as it ought to be."*



GRACE TRAPNELL  
METTER, GA.

Y. W. C. A., '31-'32; Stephens, '31-'32.  
*"Life gives to you only what you give to life."*



GEORGE WINGARD  
SAVANNAH, GA.

Oglethorpe, '30-'32; President, '32; Secre-  
tary, '31; Y. W. C. A., '30-'32; Y. W. C. A.  
Cabinet, '31-'32; House Council, '30-'32; RE-  
FLECTOR Staff, '31-'32.  
*"Ever-thoughtful and a congenial disposition."*





Freshman



## FRESHMAN CLASS OFFICERS

OSCAR JOINER . . . . . *President*

CHARLOTTE BAUMRIND . . . . . *Vice-President*

SARAH PIPPINS . . . . . *Treasurer*

A. A. SINGLEY . . . . . *Sponsor*

MISS RUTH BOLTON . . . . . *Sponsor*

T. A. WITCHER . . . . . *Sponsor*

LEONARD KENT . . . . . *Secretary*



## FRESHMAN CLASS ROLL

M. WOLFF  
J. WRINKLE  
E. WILLIAMSON  
N. WILLIAMS  
C. WILLIAMS  
B. WILLIAMS  
M. C. WALL  
M. VANDIVER  
G. TROWELL  
H. TIPPENS  
R. L. THOMPSON  
H. THOMASON  
H. TAYLOR  
R. SWINDELL  
J. SUDDATH  
H. STRICKLAND  
S. STAPLETON  
P. STAPLETON  
K. SMITH  
W. SMITH  
E. SMITH  
A. SIMMS  
L. J. SHUMAN  
M. SEIGLER  
J. S. RUSHTON  
G. RUSHING  
W. G. ROGERS  
M. ROCKER  
M. RIMES  
E. RIGGS  
J. B. REWIS  
T. RAMSEY  
N. PYE  
L. PROCTOR  
E. PREETORIOUS  
R. POPPELL

H. PITCHFORD  
S. PIPPENS  
E. PERRY  
D. N. PARKER  
A. PAFFORD  
H. H. OLLIFF  
W. L. NORMAN  
G. NICHOLSON  
C. NEWTON  
J. MUNSON  
C. MUNCH  
L. MORGAN  
M. J. MOORE  
M. MONROE  
S. MONROE  
W. I. MINK  
V. MINCEY  
G. MAYS  
A. MCGAULEY  
H. M. McELVEEN  
R. McDUFFIE  
F. McCURLEY  
A. L. LYNN  
V. LORD  
F. LESTER  
W. LEE  
E. LEE  
M. LAWRENCE  
C. LANGFORD  
J. LAMPP  
M. KINNEY  
C. KETTLES  
L. KENT  
J. KELLIHER  
MRS. O. JONES  
P. JONES

O. JOINER  
M. JOINER  
C. JOHNSON  
A. JOHNSON  
M. ILER  
R. HOLLAND  
B. H. HOLLAND  
R. HOBBS  
H. HINSON  
R. HERRINGTON  
F. HERRINGTON  
E. P. HENDRIX  
M. HATCHER  
E. HARRIS  
T. GREENWAY  
V. GEORGE  
O. GAY  
R. GARBUTT  
G. A. GARBUTT  
L. FRAZIER  
L. FRANKLIN  
M. FLOURNOY  
W. FLANAGAN  
H. ENECKS  
V. EDENFIELD  
M. F. EDENFIELD  
B. DURRENCE  
S. D. DUNCAN  
H. DOSTER  
A. DUGGAR  
J. DORSEY  
R. DIXON  
J. DICKENS  
J. DeLOACH  
E. DeLOACH  
M. E. DEKLE

G. F. DALRYMPLE  
W. DAVIS  
L. COX  
P. CORY  
A. CONE  
V. CONE  
E. COLLINS  
M. COBB  
A. CLIFTON  
W. CLAY  
L. CHRISTIAN  
L. CANADY  
L. BROWN  
C. BROCK  
E. BREWTON  
E. BRANNEN  
T. BRADY  
L. BOBBITT  
E. BLOUNT  
M. M. BLITCH  
M. BIRD  
E. BIGGERS  
E. BERRY  
H. BEDDINGFIELD  
C. BAUMRIND  
T. J. BACON  
R. BACON  
P. ANDERSON  
M. ANDERSON  
L. L. ANDERSON  
L. ANDERSON  
B. ANDERSON  
J. T. ALEXANDER  
J. E. LANIER  
L. GREENE



## HIGH SCHOOL ROLL

JESSE QUATTLEBAUM

CLARA EDWARDS

CLARENCE BRACK

MARY PEARCE

MARY DUGGAR

LOUISE BOYKIN

HELEN PARKER

LOUCILE CHRISTIAN

JOSEPH BOYKIN

CARRIE ELSIE LORD

HURLEY CHATHAM

EWELL ALEXANDER

IRIS KENNEDY

MATTIE CAIN

FRANCESKA BUSSEY

J. C. HINES

MEDA CHANDLER

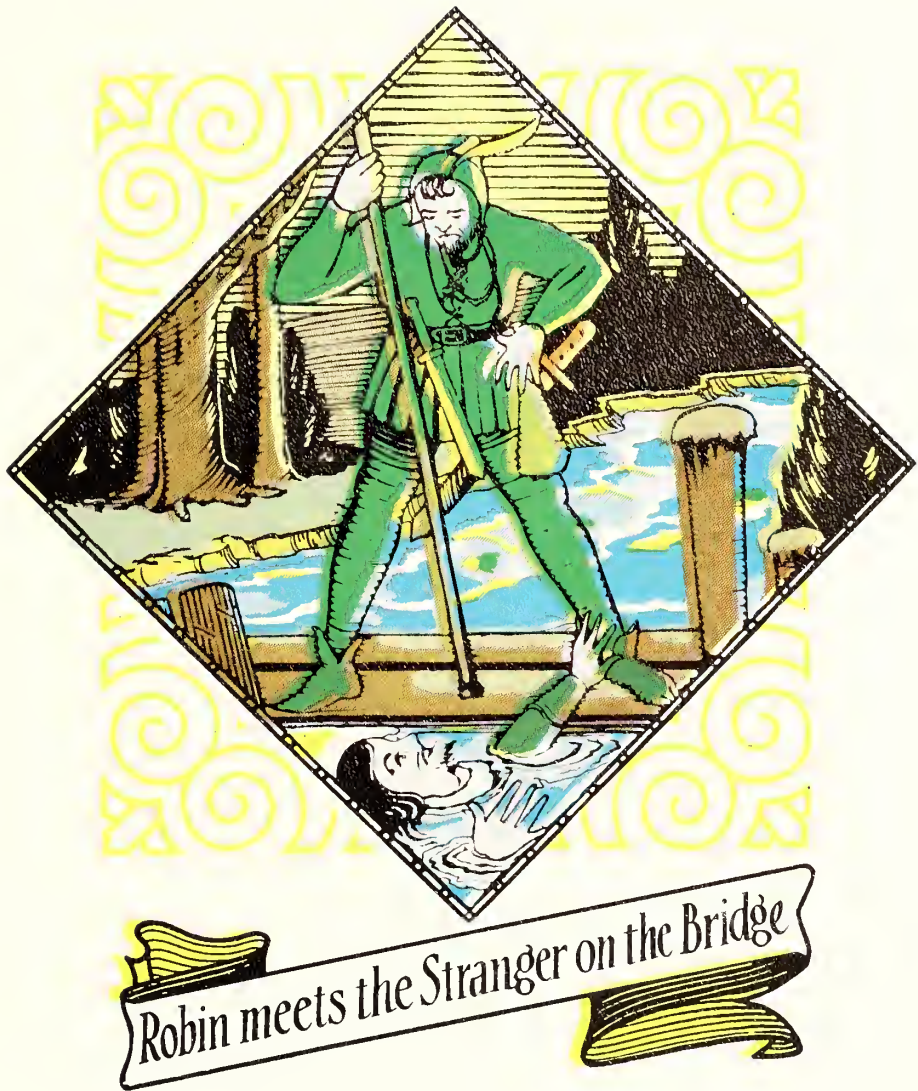
FRANCES MARION HODGES

MYRTIS HARVILLE

MELROSE BROWN

LOWELL MORGAN





## Activities





## Y. M. C. A.

### OFFICERS

RALPH STEPHENS . . . . .	<i>President</i>
AUBREY PAFFORD . . . . .	<i>Vice-President</i>
HUBERT DEWBERRY . . . . .	<i>Secretary</i>
GEORGE THRIFT . . . . .	<i>Treasurer</i>

### MEMBERS

ALEXANDER, J. T.  
 BACON, ROBERT  
 BIGGERS, ELMO  
 BLOUNT, EDWARD  
 BOBBITT, LAMAR  
 BREWTON, ELMER  
 BURGESSON, JOHN  
 CARRUTH, JAMES  
 CLAY, JACK  
 COX, LELAND  
 DANIELS, ARTHUR  
 DAUGHTRY, CLYDE  
 DEWBERRY, HUBERT  
 DICKENS, JOHN  
 DUNCAN, S. O., JR.  
 FRANKLIN, LEHMAN  
 FRAZIER, LILBURN

GREEN, LOREN  
 HALE, CLIFFORD  
 HERRINGTON, FRANK  
 HOBBS, ROBERT  
 HODGERS, CARL  
 JOINER, OSCAR  
 JONES, POWELL  
 KENT, LEONARD  
 LANIER, JOE  
 LEE, EARL  
 MARR, ROBERT LEE  
 McDUFFIE, RUFUS  
 MINK, W. I.  
 MUNCH, CHARLES  
 NEVILLE, JAMES  
 NEWTON, CHARLES  
 NICHOLS, I. D.

NICHOLSON, GUY  
 NORMAN, LLOYD  
 OLLIFF, H. H.  
 PAFFORD, AUBREY  
 PROCTOR, LEWIS  
 ROBERTS, T. E.  
 SANDIFER, PRESTON  
 SHAFE, CHARLES  
 SMITH, WILKINS  
 STAPLETON, PIERCE  
 STAPLETON, SIDNEY  
 STEPHENS, RALPH  
 THOMASON, HOMER  
 THRIFT, GEORGE  
 WALL, NEWTON  
 WILLIAMS, CHESTER  
 WRINKLE, JAMES



THEME: "I am come that they might have life, and that they might have it more abundantly." John 10:10.

#### OFFICERS

ADDIE B. PARKER . . . . . *President*  
 LOIS BURKE . . . . . *Vice-President*  
 HAZEL THOMPSON . . . . . *Secretary*  
 BEULAH DAVIS . . . . . *Treasurer*  
 MISS SIMPSON . . . . . *Sponsor*  
 MISS SINGLEY . . . . . *Sponsor*

#### CABINET

KATHRYN ENECKS	ALMA JIM DANIEL
RETA LINDSEY	GEORGE WINGARD
MARY JANE BOWEN	VERA McELVEEN
LUCILE SUDDATH	DORA SMITH



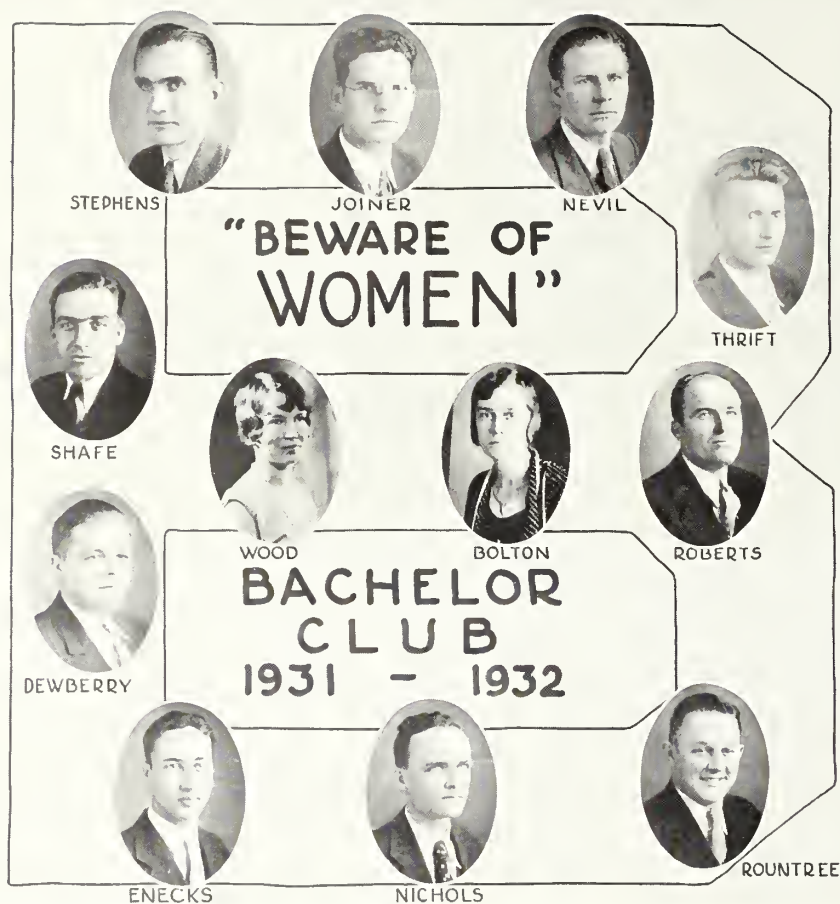


#### MEMBERS

BARNHILL, LORENE  
 BIRD, MILDRED  
 BLOUNT, MAE  
 BOWEN, MARY JANE  
 BRADY, TORRANCE  
 BURKE, LOIS  
 CAIN, MATTIE  
 CANADY, LUCILLE  
 CHRISTIAN, LOUISE  
 CHRISTIAN, LUCILLE  
 CLARKE, JOSIE MAE  
 DANIELS, ALMA JIM  
 DAVIS, BEULAH  
 DIXON, RUBY  
 DORSEY, JEWELL  
 DOSTER, HENRIETTA  
 EDENFIELD, VIRGINIA  
 EDWARDS, CLARA  
 ENECKS, HELEN  
 ENECKS, KATHRYN  
 GAY, OPAL  
 HUTCHINSON, LOIS  
 HARRIS, EDNA  
 HARVILLE, MYRTIS  
 HARWELL, GENIE MAE  
 HATCHER, MARJORIE

HENDRICKS, EUNICE  
 HERRINGTON, RUBY  
 HERRINGTON, FRANCES  
 ILER, MAUDE  
 JERNIGAN, OLLIE MAE  
 JOHNSON, AGNES  
 JOINER, MARGUERITE  
 LANIER, SYBIL  
 LAWRENCE, MADOLYN  
 LINDSEY, RETA  
 LOVETT, KATHRYN  
 LYNN, ANNIE LAURIE  
 MCDARIS, MARJORIE  
 McELVEEN, VERA  
 McELVEEN, HASSIE MAUDE  
 MCGAULEY, ADELINE  
 MINICK, ROSS  
 MUNSON, JOSEPHINE  
 NEW, WILMA  
 PARKER, ADDIE B.  
 PERRY, EDITH  
 PYE, NINA  
 PIPPIN, SARA  
 POPPELL, RENA  
 PREETORIOUS, ELOISE

PROCTOR, MILDRED  
 RAYFORD, MARY GEORGE  
 RINER, MAMIE  
 ROBINSON, MARTHA  
 ROCKER, MABEL  
 ROZIER, JAUNITA  
 ROUNTREE, INEZ  
 SEIGLER, MARY  
 SIMMS, ALMA  
 SMITH, DORA  
 SUDDATH, LUCILE  
 STRICKLAND, FLORICE  
 TIPPINS, HILDA  
 THOMPSON, HAZEL  
 TRAPNELL, GRACE  
 TROWELL, GRACE  
 VANDIVER, MARIE  
 VANDIVER, LILLIAN  
 VAN LANDINGHAM, STELLA  
 WALL, MATTIE CAIN  
 WATERS, IMOGENE  
 WATSON, SELMA  
 WILLIAMS, NONA  
 WILLIAMSON, EVELYN  
 WINGARD, GEORGE  
 WOLFF, MARY



#### OFFICERS

RALPH STEPHENS . . . . . *President*  
 CHARLES SHAFE . . . . . *Vice-President*  
 HUBERT DEWBERRY . . . . . *Secretary*  
 PARNELL ENECKS . . . . . *Treasurer*

#### *Sponsors*

MISS WOOD MISS BOLTON

#### MEMBERS

HUBERT DEWBERRY	JAMES NEVILLE	CHARLES SHAFE
PARNELL ENECKS	I. D. NICHOLS	RALPH STEPHENS
CARL HODGES	T. E. ROBERTS	GEORGE THRIFT
OSCAR JOINER	JOHN E. ROUNTREE	NEWTON WALL



## IOTA PI NU

*Organized, October, 1931*

### MEMBERS

#### *Seniors*

JOHN BURGESSON  
HUBERT DEWBERRY

#### *Juniors*

RALPH STEPHENS  
HORACE BOYKIN  
JOHN ELLIS ROUNTREE

#### *Sophomores*

CHARLES SHAFE  
MAURICE GRAHL  
JAMES NEVILLE  
EARNEST HOLLAND  
OSCAR JOINER

#### *Freshmen*

FRANK LESTER  
SHELBY MONROE



## OGLETHORPE LITERARY SOCIETY

### *Presidents*

KATHRYN ENECKS      GEORGE WINGARD  
CHESTER WILLIAMS

### *Debaters*

ADDIE B. PARKER      I. D. NICHOLS  
PEARL OLLIFF      A. W. BACON

### *Sponsors*

MISS MARIE WOOD      B. L. SMITH

### *Officers*

#### FALL TERM

KATHRYN ENECKS . . . . . *President*  
I. D. NICHOLS . . . . . *Vice-President*  
GEORGE WINGARD . . . . . *Secretary*

#### WINTER TERM

GEORGE WINGARD . . . . . *President*  
JOHN LAMPP . . . . . *Vice-President*  
VIRGINIA EDENFIELD . . . . . *Secretary*

#### SPRING TERM

CHESTER WILLIAMS . . . . . *President*  
MAMIE RINER . . . . . *Vice-President*  
RETA LINDSEY . . . . . *Secretary*





## OGLETHORPE LITERARY SOCIETY

*"Not quantity but quality counts."*

### MEMBERS

ALEXANDER, J. T.  
 BACON, A. W.  
 BEDDINGFIELD, HILBERT  
 BIGGERS, ELMO  
 BOYKIN, LOUISE  
 BOYKIN, HORACE  
 BRADEY, TORRENCE  
 CREWTON, ELMER  
 BROWN, LONNIE  
 CLARK, JOSIE MAE  
 COLLINS, ELIZABETH  
 DOSTER, HENRIETTA  
 DUGGAR, MARY  
 EDENFIELD, VIRGINIA  
 ENECKS, HELEN  
 ENECKS, KATHRYN  
 ENECKS, PARNELL  
 HATCHER, MARJORIE

HENDRIX, EUNICE PEARL  
 HODGES, CARL  
 HOLLAND, EARNEST  
 JERNIGAN, OLLIE MAE  
 LAMPP, JOHN, JR.  
 LEWIS, ROUNTREE  
 LINDSEY, ALMARITA  
 MARR, ROBERT LEE  
 MCCURLEY, FLOYD  
 MCGAULEY, ADELINE  
 MINK, W. I.  
 MORGAN, LOWELL  
 MUNCH, CHARLES  
 MUNSON, JOSEPHINE  
 NEWTON, CHARLES  
 NICHOLS, I. D.  
 NORMAN, LLOYD

OLLIFF, PEARL  
 PARKER, ADDIE B.  
 POPPELL, RENA  
 RINER, MAMIE  
 RUSKIN, EULIE  
 SMITH, WILKINS  
 STRICKLAND, HAROLD  
 THOMPSON, HAZEL  
 THRIFT, GEORGE  
 TIPPENS, HILDA  
 TRAPNELL, GRACE  
 VAN LANDINGHAM, STELLA  
 WALL, MATTIE CAIN  
 WATSON, SELMA  
 WILLIAMS, CHESTER  
 WILLIAMS, NONA  
 WILLIAMSON, EVELYN  
 WINGARD, GEORGE



## STEPHENS LITERARY SOCIETY

### *Presidents*

JAMES NEVILLE      JOHN BURGESSON  
OSCAR JOINER

### *Debaters*

VERA McELVEEN      RALPH STEPHENS  
MARY JANE BOWEN      JAMES NEVILLE  
MAE CUMMINGS      RALPH STEPHENS

### *Sponsors*

MISS HESTER NEWTON      MR. A. A. SINGLEY

### *Officers*

#### FALL TERM

JAMES NEVILLE . . . . . *President*  
VERA McELVEEN . . . . . *Vice-President*  
LUCILE SUDDATH . . . . . *Secretary*  
OSCAR JOINER . . . . . *Treasurer*  
CHARLES SHAFE . . . . . *Chaplain*

#### WINTER TERM

JOHN BURGESSON . . . . . *President*  
HUBERT DEWBERRY . . . . . *Vice-President*  
KATHRYN LOVETT . . . . . *Secretary*  
LOIS BURKE . . . . . *Treasurer*  
SIDNEY STAPLETON . . . . . *Chaplain*

#### SPRING TERM

OSCAR JOINER . . . . . *President*  
JAMES CARRUTH . . . . . *Vice-President*  
IMOGENE WATERS . . . . . *Secretary*  
H. H. OLLIFF . . . . . *Treasurer*  
ROBERT BACON . . . . . *Chaplain*



## STEPHENS LITERARY SOCIETY

MEMBERS, 1931-'32

ANDERSON	FRANKLIN	LEE	REWIS
BACON	FLOURNOY	LAWRENCE	SIMMS
BARNHILL	GAY	LANGFORD	SANDIFER
BIRD	GARBUTT	LYNN	STAPLETON
BLOUNT	GARBUTT	McDUFFIE	STAPLETON
BROCK	GEORGE	MINICK	SEIGLER
BOBBITT	GREENWAY	McDARIS	SHAFE
BURGESON	GRUSIKIN	McELVEEN	SMITH
CANADY	HOBBS	McELVEEN	SUDDATH
CAIN	HARWELL	NORMAN	SMITH
CHRISTIAN	HARWELL	NEVILLE	TAYLOR
CHRISTIAN	HINSON	NEW	THOMASON
COX	HINES	NICHOLSON	VANDIVER
CLIFTON	HARRIS	OLLIFF	VANDIVER
CARRUTH	HERRINGTON	PARKER	WRINKLES
CLAY	HALE	PARKER	WOLFF
CONE	HERRINGTON	PROCTOR	WATERS
DAVIS	HERRINGTON	PYE	BLOUNT
DELOACH	ILER	PIPPENS	ROZIER
DIXON	JOINER	PRETORIOUS	KELLIHER
DEWBERRY	JONES	PERRY	TODD
DUNCAN	JOINER	PAFFORD	GRAHL
DICKENS	JOHNSON	PROCTOR	CONE
DANIEL	KENT	RAYFORD	KENNEDY
DORSEY	JOHNSON	RUSHING	ROUNTREE
DURRANCE	KINNEY	ROBERTS	McKOWAN
EDWARDS	KETTLES	ROBERTSON	WEATHERFORD
EDENFIELD	LOVETT	ROUNTREE	WATERS



## MATH CLUB

*"Mathematics is the glory of the human mind."*

### OFFICERS

VERA McELVEEN	President
I. D. NICHOLS	Vice-President
GEORGE THRIFT	Secretary-Treasurer
MISS PERRY	Sponsor

### ROLL

ANDERSON, MARSHALL  
 BEDDINGFIELD, HILBERT  
 BIGGERS, ELMO  
 BOWEN, MARY JANE  
 BREWTON, ELMER  
 BURKE, LOIS  
 CARRUTH, JAMES  
 CLARK, JOSIE MAE  
 COX, LELAND  
 DANIELS, ARTHUR  
 DICKENS, JOHN  
 DAVIS, BEULAH  
 ENECKS, PARNELL  
 FLANAGIN, STEWART  
 GRUSHKIN, SAM R.

HATCHER, MARJORIE  
 HODGES, CARL  
 KENT, LEONARD  
 JONES, O. W.  
 McDUFFIE, RUFUS  
 McELVEEN, VERA  
 McELVEEN, HASSIE MAUDE  
 NICHOLS, I. D.  
 POPPELL, RENA  
 PROCTOR, LEWIS  
 RINER, MAMIE  
 ROBERTS, TALMAGE  
 TAYLOR, HENRY  
 THOMPSON, HOMER  
 THRIFT, GEORGE

WRINKLE, JIM





## POPULAR SCIENCE CLUB

### OFFICERS

JAMES NEVILLE . . . . .	<i>President</i>
BEULAH DAVIS . . . . .	<i>Vice-President</i>
VERA McELVEEN . . . . .	<i>Secretary</i>
LUCILE SUDDATH . . . . .	<i>Treasurer</i>
MISS MALVINA TRUSSELL . . . . .	<i>Sponsor</i>
MR. W. S. HANNER . . . . .	<i>Sponsor</i>

### MEMBERS

BACON, ROBERT	FRANKLIN, LEHMAN	PYE, NINA
BEDDINGFIELD, HILBERT	HALE, CLIFF	ROBERTSON, MARTHA
BURGESON, JOHN	HARWELL, GENIE MAE	ROUNTREE, JOHN ELLIS
BURKE, LOIS	JOINER, OSCAR	SANDIFER, PRESTON
CARRUTH, JAMES	KINNEY, MARTHA	SHAFE, CHARLES
CLAY, JACK	LESTER, FRANK	SMITH, DORA
CLIFTON, AUDREY	LOVETT, KATHRYN	SMITH, WILKINS
CONE, CONSTANCE	McELVEEN, HASSIE MAUDE	STEPHENS, RALPH
CONE, RUFUS	McELVEEN, VERA	SUDDATH, LUCILE
COX, LELAND	MUNCH, CHARLES	TAYLOR, HENRY
DAVIS, BEULAH	NEVILLE, JAMES	THOMASON, HOMER
DEWBERRY, HUBERT	NICHOLSON, GUY	THRIFT, GEORGE
DICKENS, JOHN	PARKER, FRANCES	VANDIVER, LILLIAN
EDENFIELD, VIRGINIA	PREETORIOUS, ELOISE	WILLIAMS, NONA
ENECKS, HELEN	PROCTOR, LOUIS	WRINKLE, JAMES



GLEE CLUB



HOME ECONOMICS CLUB



## REFLECTOR STAFF

MARY JANE BOWEN . . . . .	<i>Editor-in-Chief</i>
DORA SMITH . . . . .	<i>Assistant Editor</i>
FRED PAIGE . . . . .	<i>Business Editor</i>
SARAH SMITH . . . . .	<i>Assistant Business Editor</i>
ROBERT LEE MARR . . . . .	<i>Assistant Business Editor</i>
GEORGE WINGARD . . . . .	<i>Literary Editor</i>
ALMA RITA LINDSEY . . . . .	<i>Assistant Literary Editor</i>
VERA McELVEEN . . . . .	<i>Photograph Editor</i>
GENIE MAE HARWELL . . . . .	<i>Art Editor</i>
GEORGE THRIFT . . . . .	<i>Club Editor</i>
KATHRYN ENECKS . . . . .	<i>Club Editor</i>
ROBERT F. DONALDSON . . . . .	<i>Faculty Advisor</i>

## IDEALS OF THE COLLEGE

1. Systematic Habits in All Activities
2. A Disposition and Skill to Solve Problems
3. The Ability to Think Independently
4. An Appreciation for the Beautiful, the True, the Good
5. A Pleasing, Courteous Personality
6. Absolute Honesty and Truthfulness
7. Good Scholarship
8. A Sense of Clean, Wholesome Humor
9. The Ability to Use the English Language Correctly and Effectively
10. A Feeling of Responsibility
11. An Enthusiastic Love for Work
12. Habits of Wise Economy
13. A Democratic and Loyal Spirit
14. A Master-like Character





Little John defeats Erico' Lincoln

Athletics



#### EMILY SIMPSON

Emily Simpson was graduated from Athens High School, attended Maryville College in Tennessee for two years, and then went to the University of Georgia where she received a B.S. degree. While at the University she was president of the Y. W. C. A. Although she took an active part in religious activities, she spent more time in athletics. She was captain of the basket-ball team, and held places of honor in almost every phase of sport.

Miss Simpson came to South Georgia Teachers College in 1929. A leave of absence was granted her in 1932 in order that she might do graduate work at Columbia University.



#### B. L. "CROOK" SMITH

Byron Lambert Smith was graduated from Lincoln High School, and attended Bryson College in Fayetteville, Tennessee, for a year. He entered Mercer University in 1921. He is Mercer's first four-letter-man and its largest holder of letters, having a total of thirteen. He was all S. I. A. A. football for four years and all Southern basket-ball forward in 1922; received honorable mention for all American end in 1923, '24, '25; all S. I. A. A. first baseman from 1922-'25; a member of Mercer's track team, 1922-'25. Mr. Smith was a member of the Alpha Tau Omega Fraternity. After coaching four years at Dalton High School, Mr. Smith came to South Georgia Teachers College in 1929 as Head Coach. Since that time he has done splendid work, for he has a thorough understanding of young men. He stands for high ideals and instills them into the boys.





## ALUMNI BUILDING

The Alumni Building, which was completed the first of the year, is one of the outstanding structures on the campus.

The seating capacity is six hundred. The floor serves as one of the best basket-ball and soccer courts in the State. The lockers, showers and dressing rooms are very adequate for physical educational purposes.

The building is the center of all social activities on the campus. The first function to be held in the new gymnasium was a joint party given by the Baptist and Methodist Sunday School classes. At this time Mr. Wells expressed his appreciation for the gifts which had made its construction possible and announced that it would be called the "Alumni Building."

However, the Alumni Building is used not only for physical development, but also as a model training school for the College. The entire ground floor is set aside for this specific purpose. The classrooms have every modern convenience and the children are overjoyed with their new home.

The students of the College are justly proud of this beautiful building which meets a long felt need and is the physical expression of the donations given by the Alumni, faculty, students and other friends of the South Georgia Teachers College.





## THE SWIMMING POOL

The unique feature about the swimming pool that students like to recall is that it was built by the students themselves with the help of friends of the College. The movement was begun during the winter and spring of 1930. A committee solicited donations from the student body and from the many friends of the College. However, the necessary funds could not be raised and the actual building had to be postponed until the spring of 1931. Early in the spring of 1931 the movement was again taken up by the student body. Each boy signed a pledge to give three days' work to the actual construction. It was a pleasant sight to see those boys working like a nest of huge ants, for the work was so cheerfully given it amounted to play. To make it even more colorful, the girls came out to supervise and added a touch of beauty to the scene.

In March, a proud and happy student body gathered around the pool for its formal dedication. Kathryn Brett had been chosen to make the first dive which proved to be a beautiful swan dive. She was immediately followed by many others who felt a double pleasure in the first swim. This day will always linger in the memory, enriched with a touch of love and appreciation for the happy association of group work.

## FOOTBALL SQUAD

BRACK <i>End</i> 170 Pounds	HOBBS <i>Tackle</i> 185 Pounds	KELLIHER <i>End</i> 178 Pounds
HINES <i>Halfback</i> 165 Pounds	RIGGS <i>Center</i> 170 Pounds	KETTLES <i>Center</i> 185 Pounds
BOBBITT <i>Fullback</i> 165 Pounds	SPEARS <i>End</i> 168 Pounds	PITCHFORD <i>Quarterback</i> 160 Pounds
WILLIAMS <i>End</i> 158 Pounds	OLLIFF <i>Guard</i> 165 Pounds	MOBLEY <i>Halfback</i> 170 Pounds
ROGERS <i>Tackle</i> 160 Pounds	HALE <i>End</i> 180 Pounds	MUNCH <i>End</i> 165 Pounds
"Rabbit" WHITE	BROWN <i>Quarterback</i> 158 Pounds	THIRIFT <i>Guard</i> 150 Pounds
GARBUTT <i>Center</i> 150 Pounds	DAVIS <i>Halfback</i> 160 Pounds	DEWBERRY <i>Tackle</i> 220 Pounds
BACON <i>Guard</i> 160 Pounds	JOHNSON <i>Guard</i> 160 Pounds	BURGESON <i>Tackle</i> 210 Pounds
GARBUTT, G. A., <i>Tackle</i> 165 Pounds	Coach B. L. SMITH	NORMAN <i>Tackle</i> 180 Pounds
GRUSHKIN <i>Quarterback</i> 160 Pounds	CLARKE <i>Halfback</i> 165 Pounds	ROUNTREE <i>Halfback</i> 165 Pounds
THOMASON <i>Halfback</i> 165 Pounds	KENNEDY <i>Halfback</i> 160 Pounds	
SMITH <i>Fullback</i> 168 Pounds	ANDERSON <i>Guard</i> 170 Pounds	

## RESUME OF BLUE TIDE FOOTBALL SEASON

Looking back over the 1931 football season, we do not find the Blue Tide's record so impressive as to make a successful season, for it shows six losses and two victories.

Only four letter-men returned from the '30 squad. These with the new recruits had three weeks of daily training and practice before they met Bowden State College. The North Georgians proved too strong for the lighter and less experienced Tidesmen, defeating them, 24-0.

Week after week these determined, yet inexperienced youngsters met stronger opponents and lost. But this did not take the fight out of these warriors.

After the defeat at Parris Island, the team seemed to take on new life. In the annual clash on Armistice with Newberry in Savannah, the Tide naturally was rated as the underdog. Nevertheless, they kept the South Carolinians fighting. In the second quarter Hale snagged a 20-yard pass to score the season's points for the Teachers. "Sunback" Hines went through the tackle for seven yards in the last period to tie the score at 13 all. Then an Indian intercepted a pass on the Tide's 30-yard line, but was hauled down on the 2-yard line. This was followed by a touchdown which proved to be the margin of victory.

After trouncing the Millen Athletic Club, 67-0, the Tide began making preparation for the annual Thanksgiving clash.

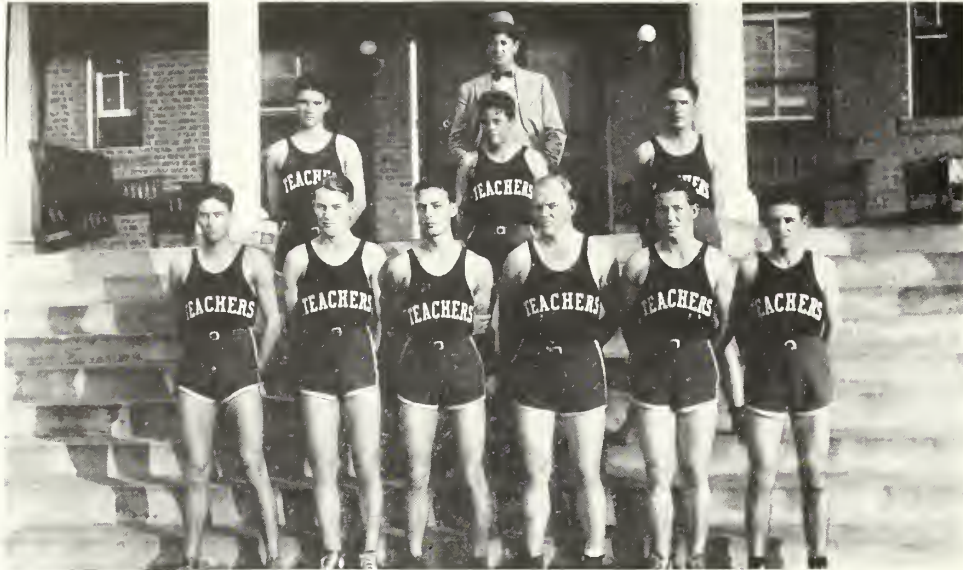
Before a record-breaking crowd, the Tide turned back the strong Brewton-Parker Barons, 6-0. The game was close and hard-fought throughout. The score came in the second period when Burgeson crashed through for sixteen yards making the only touchdown.

With the fewest number of veterans of any season the Tide fought one of the hardest schedules of its history. But—look out for the rolling Tide of '32.

Out of the thirty-five men on this year's squad, only one will be lost by graduation. Dewberry, who has served his team well for three years, will be the only missing face when the '32 season rolls around.

### SCORES

Blue Tide . . . . .	0	Bowden . . . . .	24
Blue Tide . . . . .	0	Norman Park . . . . .	7
Blue Tide . . . . .	0	Cochran . . . . .	7
Blue Tide . . . . .	0	Marines (P. I.) . . . . .	19
Blue Tide . . . . .	0	Piedmont . . . . .	16
Blue Tide . . . . .	13	Newberry . . . . .	19
Blue Tide . . . . .	67	Millen A. C. . . . .	0
Blue Tide . . . . .	6	Brewton-Parker . . . . .	0
<hr/>		<hr/>	
Total—86		Total—92	



BASKET-BALL TEAM



BASKET-BALL SQUAD



## HISTORY OF THE BASKET-BALL SEASON

With only one veteran returning for basket-ball this year, Coach "Crook" Smith turned out a smooth quintet that waded through all kinds of opposition all season to win 16 out of 23 games. Three of these games were played in the Georgia State Conference Basket-ball tournament where the Teachers won the championship by defeating the strong Piedmont Lions, 29-22.

All the players on the squad were Freshmen except Burgeson and Spears, they being Juniors and having experience. The men who composed the first string five were Hines and Spears at forwards, Thompson, at center, and Williams and Hagin, guards. These stealthy young lads worked like veterans in every game. Though these men bore the brunt of most of the games such men as Pafford, Wrinkle and Burgeson proved of value.

### SCHEDULE

	We	They	
1- 8—Pembroke A. C. . . . .	Here	40	14
1- 9—Speed Boys . . . . .	Here	51	15
1-14—Marines (Parris Is.) . . . . .	Here	33	19
1-15—Marines (Parris Is.) . . . . .	Here	42	23
1-19—Vienna High School . . . . .	There	25	34
1-20—Tifton . . . . .	There	23	32
1-21—Norman Park . . . . .	There	22	47
1-26—Cochran . . . . .	Here	34	27
1-28—Alabama Teachers . . . . .	Here	29	27
1-29—Alabama Teachers . . . . .	Here	24	27
1-30—Brewton-Parker Institute . . . . .	There	24	22
2- 4—Vienna High School . . . . .	Here	48	25
2- 5—Cochran . . . . .	There	21	42
2- 9—Jewish Educational Alliance . . . . .	There	35	60
2-12—Norman Park . . . . .	Here	28	22
2-13—Norman Park . . . . .	Here	25	26
2-17—Brewton-Parker Institute . . . . .	Here	58	16
2-26—Jesup A. C. . . . .	Here	58	20
2-28—Tarrytown A. C. . . . .	Here	66	16
3- 2—Pembroke A. C. . . . .	Here	82	38

### TOURNAMENT GAMES

3- 4—Young Harris College . . . . .	27	19
3- 5—Georgia Industrial College . . . . .	44	29
3- 5—Piedmont College . . . . .	29	22



### GIRLS' BASKET-BALL SQUAD

MAMIE RINER . . . . . *Captain*  
 MARY JANE BOWEN . . . . . *Manager*  
 EMILY SIMPSON, MILDRED MURPHY . . . . . *Coaches*

#### SCHEDULE

Jan. 16 — We . . . 43 — Baptist . . 14	Jan. 30 — We . . . 53 — B. P. I. . 24
Jan. 19 — We . . . 26 — B. P. I. . 17	Feb. 6 — We . . . 29 — Baptist . . 24
Jan. 23 — We . . . 53 — Methodist . 14	Feb. 22 — We . . . 11 — Stillmore . 5



### JUNIOR-SENIOR SOCCER CHAMPIONS

MARY JANE BOWEN	RUBY JOINER	WILMA NEW	DORA SMITH
LOIS BURKE	VERA McELVEEN	MAMIE RINER	SARAH SMITH
JOSIE MAE CLARK			LUCILE SUDDATH



Robin makes merry at ye Blue Boar Inn

## Features







*Reading from left to right: SARA PIPPIN, Most Beautiful; RALPH STEPHENS, Mr. S. G. T. C.; LUCILE SUDDATH, Miss S. G. T. C.; CLIFFORD HALE, Most Handsome. Reading down: MAMIE RINER, Most Athletic Girl; JOHN BURGESSON, Most Athletic Boy; SARAH SMITH, Most Intellectual.*

## STANDARD TEACHERS COLLEGE

The South Georgia Teachers College at Statesboro is a first-class college in your own section of the state because:

1. Its buildings, equipment and library are approved and valued at \$350,000.00.
2. Its faculty is composed of college teachers of long experience, who hold graduate degrees.
3. Its course of study compares favorably with other colleges in the state. Get our catalogue and compare them.
4. The State of Georgia provides us a maintenance fund of \$68,000.00 annually. This fund provides the money to satisfactorily operate a college.
5. The college is a member of the American Association of Teachers Colleges and the Georgia Association of Colleges.

The above five statements cover the things necessary to make a college. Write for a catalogue. You can enter now.

## SOUTH GEORGIA TEACHERS COLLEGE

Statesboro, Georgia



I have enjoyed knowing you this  
year and being in some of your  
classes. If you come to Clayton come  
by to see me.

Hilda Tippine





ZACH S. HENDERSON LIBRARY



0 2001 0488983 3

DEMCO



