

Georgia Southern University

Digital Commons@Georgia Southern

Covid-19 Resources

Covid-19 Response and Resources

2020

COVID-19 Testing

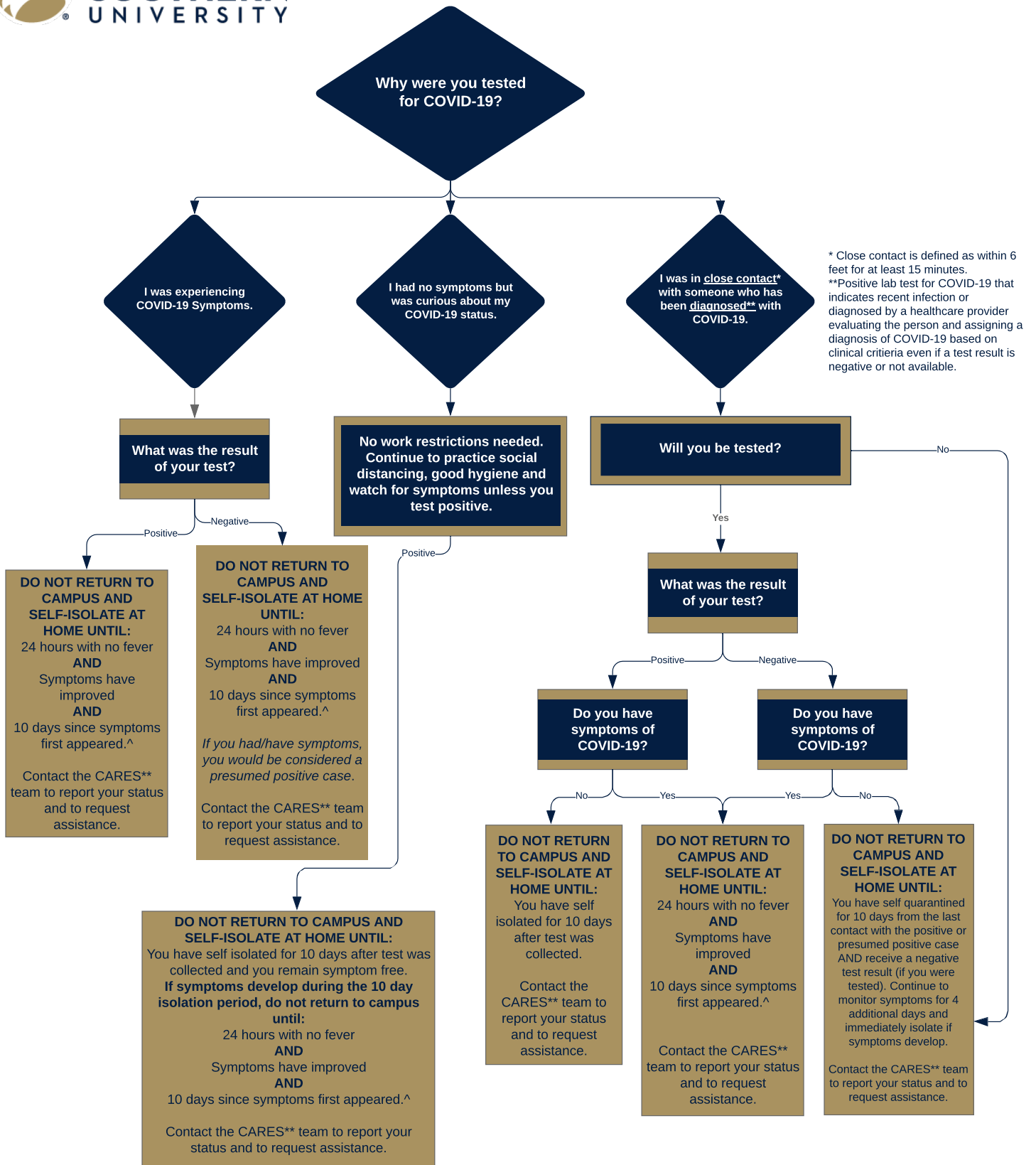
Georgia Southern University

Follow this and additional works at: <https://digitalcommons.georgiasouthern.edu/covid19-resources>

Recommended Citation

Georgia Southern University, "COVID-19 Testing" (2020). *Covid-19 Resources*. 2.
<https://digitalcommons.georgiasouthern.edu/covid19-resources/2>

This decision tree is brought to you for free and open access by the Covid-19 Response and Resources at Digital Commons@Georgia Southern. It has been accepted for inclusion in Covid-19 Resources by an authorized administrator of Digital Commons@Georgia Southern. For more information, please contact digitalcommons@georgiasouthern.edu.



* Close contact is defined as within 6 feet for at least 15 minutes.
 **Positive lab test for COVID-19 that indicates recent infection or diagnosed by a healthcare provider evaluating the person and assigning a diagnosis of COVID-19 based on clinical criteria even if a test result is negative or not available.

^Some individuals with severe illness or are severely immunocompromised may be required to isolate for 20 days or be retested. Please follow guidance of your healthcare provider.

**Contact the CARES Center for answers to all your COVID-19 related questions; to self report test results and symptoms; get help evaluating your situation; and receive support for your COVID-19 related academic, employment and on-campus notification needs.

There are several ways to reach the CARES Center:

- Use the MyGS mobile app
- Complete the CARES Center COVID-19 self-reporting form available through the MyGeorgiaSouthern portal under the tile titled "COVID-19 Information & Resources."
- Call 912-478-CARE (Monday through Friday, 8 a.m. to 5 p.m.)
- Email covidsupport@georgiasouthern.edu