

Reflector

1930

Georgia Southern University

Follow this and additional works at: <https://digitalcommons.georgiasouthern.edu/reflector-yearbook>



Part of the [Higher Education Commons](#)

Recommended Citation

Georgia Southern University, "Reflector" (1930). *Reflector Yearbook*. 4.
<https://digitalcommons.georgiasouthern.edu/reflector-yearbook/4>


This book is brought to you for free and open access by the Student Media at Digital Commons@Georgia Southern. It has been accepted for inclusion in Reflector Yearbook by an authorized administrator of Digital Commons@Georgia Southern. For more information, please contact digitalcommons@georgiasouthern.edu.





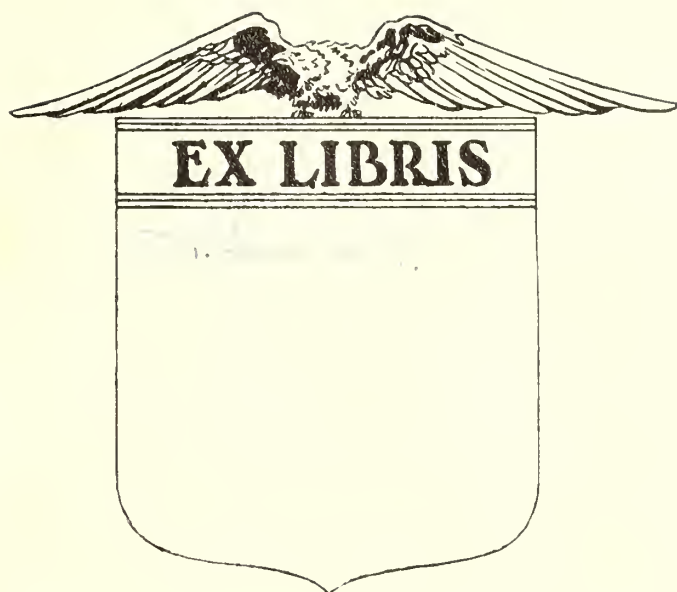
Georgia Southern College

Zach S. Henderson Library



Digitized by the Internet Archive
in 2014

<https://archive.org/details/reflector1930na>



ELMO MALLARD

Editor

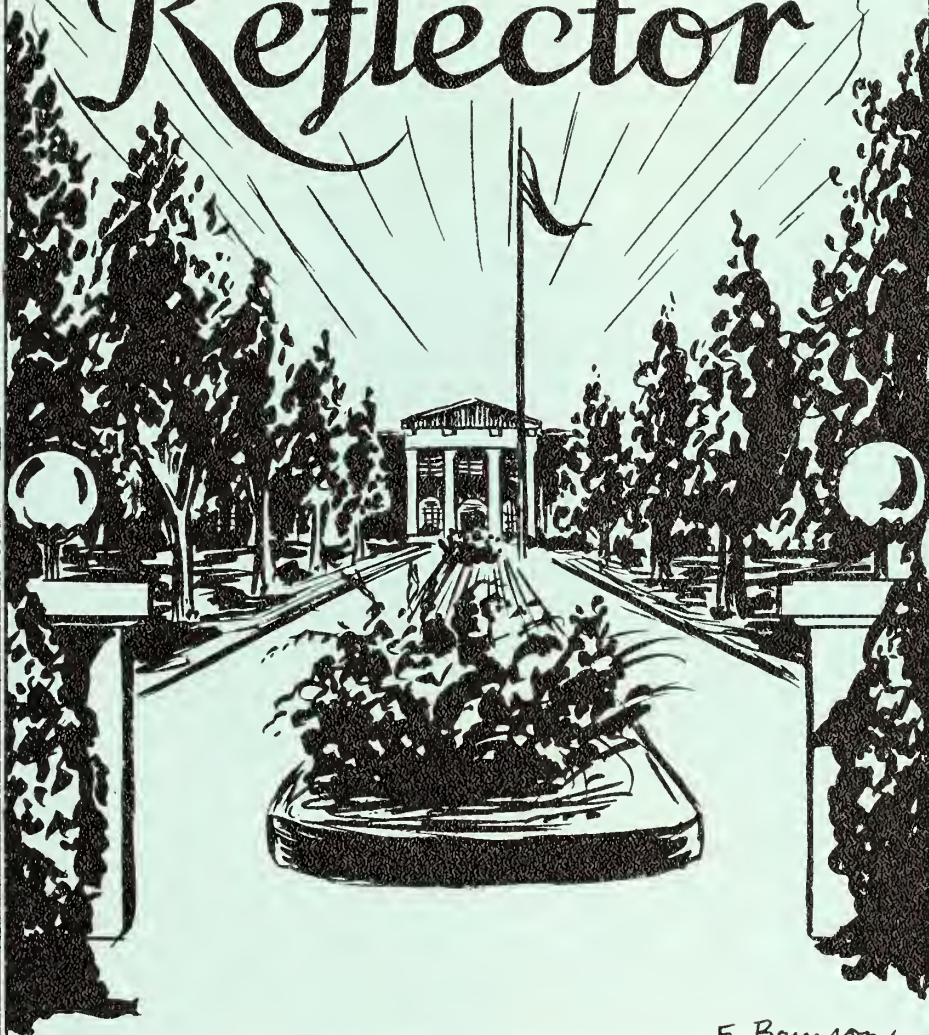
TALMAGE ROBERTS

Business Manager

COPYRIGHT

1930

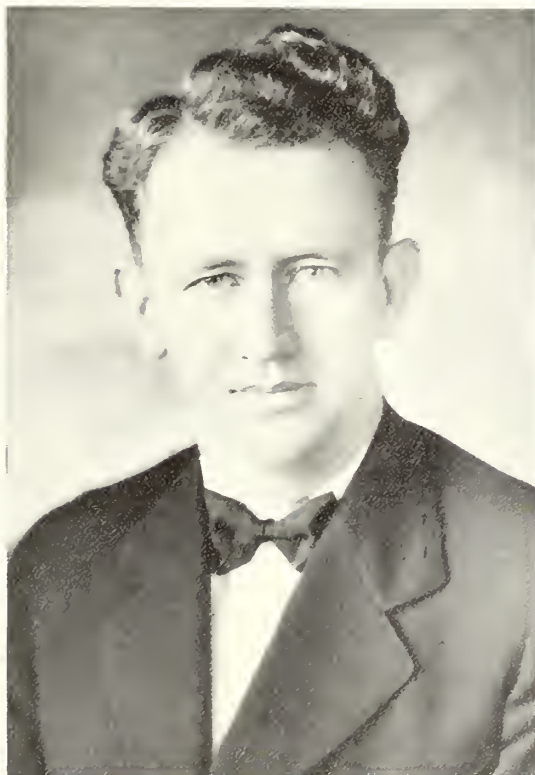
The Reflector



F. Brunson

DEDICATION

To you our loyal, much respected dean, whose high ideals of truth and right are held and praised by all with great esteem; whose courage always cheers the "Blue and White"; whose earnest efforts of strength and might seem to lead us where golden treasures wait; for this, the class of "Thirty" takes delight in having you, to whom we dedicate the Reflector, your ardour to commemorate.



DEAN Z. S. HENDERSON, B.S., M.A.

3/31/67 Dft (W. Milena Russell)

FOREWORD

*Perchance some future day you'll
turn the pages of this book
And then may it serve as a mirror
bright, helping you to look
Back to those golden, happy days your
heart will always treasure,
Back to those days of college life, filled
with happiness, joy and pleasure.
And may it help you to keep in mind,
those friends so dear to you,
And dear S. G. C. you loved so
well, its spirit and ideals too.*

CONTENTS

*F*aculty

*C*lasses

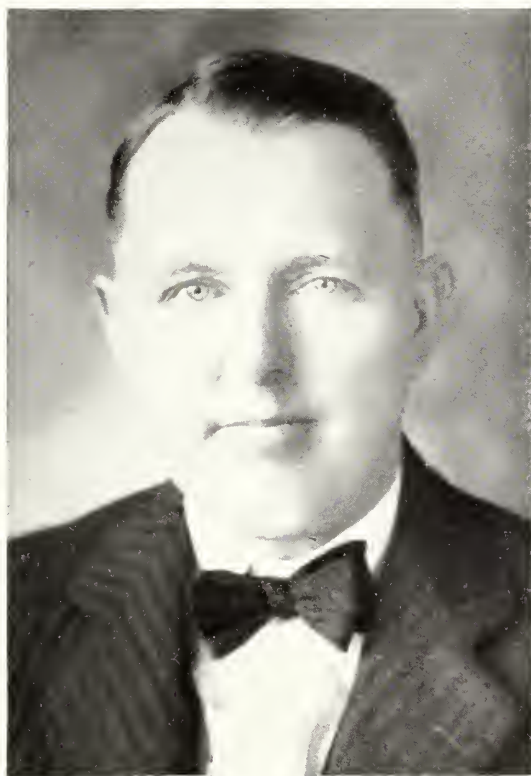
*A*ctivities

*F*eatures



Home of the President

FACULTY



PRESIDENT GUY HERBERT WELLS, A.B., M.A.



EFFIE BAGWELL, B.S.

Training School

B. S. Georgia State College for Women;
two summer schools at Mercer University.

DAVID NYE BARRON, B.S.A., M.A.

Professor of Sociology

B. S. Mississippi A. & M. College;
Clarke Memorial College; graduate work,
Mississippi A. & M. and University of
Georgia; A. M. George Peabody College
for Teachers; graduate work at Univer-
sity of North Carolina.

MRS. LULA E. BELL

Dean of Women

LENA BELLE BRANNEN, A.B., B.M.

Assistant Language, Piano

A. B. Wesleyan; B. M. Wesleyan Col-
lege.

MABEL BRUNSON

Bookkeeper

J. E. CARRUTH, A.B., M.A.

*Professor of Education and Director of
Training School*

A. B. Milsap College; M. A. Peabody
College for Teachers; one year's work on
Doctor's, Peabody College for Teachers;
one year Southern Methodist University.

CARRIE LAW CLAY, B.S., M.A.

Professor of English

B.S. George Peabody College for Teachers; A.M. George Peabody College for Teachers; Normal graduate, State Normal.

MARION COOPER, B.M.

Musical and Vocal Instructor

Brenau College, Gainesville, Georgia; Boston Conservatory; Lavson's Conservatory, New Hope, Pa.

ROBERT DONALDSON, A.B.

Assistant in English

A. B. Journalism, University of Georgia.

MRS. R. E. FULLILOVE

Manager of Dining Hall

Z. S. HENDERSON, B.S., M.A.

Dean

B. S. Piedmont College; M. A. Columbia University; Diploma as Executive in Normal Schools or Teachers College, Teachers College, Columbia University; one summer Chicago University.

MRS. JESSIE O. JOHNSTON, A.B.

Expression

A. B. Brenau College Conservatory.





MAE MICHAEL
Secretary

HESTER NEWTON, A.B., B.S., M.A.
Professor of History

A. B. Brenau; B. S. and M. A. George Peabody College for Teachers. Summer School at Columbia.

VIOLA PERRY, M.S.
Registrar and Mathematics

Diplomas, State Normal School, Athens, Ga.; B. S. Peabody College; one summer at University of Georgia; two terms graduate work Peabody College.

JOHN M. PHAGAN, B.S.
Director of Extension and Assistant in Mathematics

B. S. State Normal College, Florence, Ala.

EDITH ROBERTSON, B.S.H.Ec., M.A.
Professor of Home Economics
B. S. H. Ec. University of Georgia; M. A. Columbia University.

MARION SHUPTRINE, B.A.
Professor of Industrial Art

B. A. Wesleyan; Normal Diploma from S. G. T. C.; summer schools at S. G. C., McRae; Miss Cook's China Painting School; University of North Carolina, Chapel Hill, N. C.

EMILY SIMPSON, B.S., P.E.
Physical Education
 B. S. P. E. University of Georgia.

ALVIN ARTHUR SINGLEY, A.B., M.A.
Professor of Education
 A. B. Newberry College; M. A. University of South Carolina.

BYRON LAMBERT (Crook) SMITH, B.S.C.
Director of Athletics
 B. S. C. Mercer University, Macon, Georgia; Bryson College, Fayetteville, Tennessee.

FRANCES STUBBS, A.B.
Librarian
 Normal-English Diploma G. S. C. W.; A. N. Degree from G. S. C. W.; one summer Peabody College for Teachers; one summer Columbia University.

MALVINA TRUSSELL, B.S.
Professor of Science
 B. S. Georgia State College for Women; two terms graduate work at Cornell University; one term Emory University.

GUY HERBERT WELLS, A.B., M.A.
President
 A. B. Mercer University; A. M. Columbia University; Diploma in Superintendency. Teachers College, Columbia University; one and one-third years graduate work at Peabody College for Teachers; candidate for Ph. D. degree.

MARIE WOOD, A.B.
Training School and Latin
 Normal-English Diploma G. S. C. W.; A. B. degree G. S. C. W.; summer school Mercer University.



History of South Georgia Teachers College

THE South Georgia Teachers College was established by the General Assembly of Georgia in the summer of 1906. The name of the institution at the time of its creation was the First District A. & M. School.

The school was originally located within the Congressional District and in the town and county making the best offer for its establishment. The people of Statesboro and of Bulloch County offered the greatest inducement and Statesboro was recognized as the location for the school.

Until August 19, 1924, the school continued to operate as a District A. & M. School. Realizing the need of a State Normal college in this section of the state, the trustees drafted a bill which was passed by the General Assembly of Georgia and approved by Governor Clifford Walker on August 18, 1924, converting the First District A. & M. School into the Georgia Normal School.

In August of 1929, the State Legislature changed the name of the school to South Georgia Teachers College. The college has also been granted the legal right to award the B. S. degree upon completion of four years of college work.





Administration Building

CLASSES



MARGARET ANNE WELLS, *Mascot*

SENIOR CLASS



SARA LOIS JOHNSON

Statesboro, Georgia

Entered '27 from Andrew College; Secretary and Treasurer of Junior Class, '29; President of Oral English, '30; Dramatic Club, '30.

"To know her is to love her."

J. L. NEWTON

Daisy, Tennessee

Varsity Basket-ball, '28-'30; Varsity Baseball, '28-'30; Varsity Football, '29; Student Council, '29-'30; Secretary Senior Class, '29-'30; Coach of Girls' Basket-ball, '28-'29; Science Club, '29-'30; Assistant Physical Education Director; Best Athlete, '30.

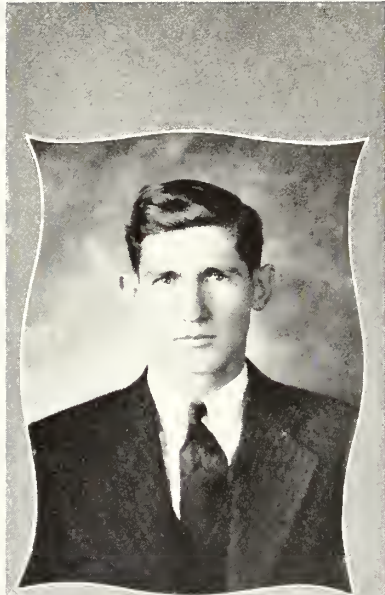
*"He has an oar in every man's boat,
And a finger in every pie."*

WALDO PAFFORD

Douglas, Georgia

Stephens Society, '27-'30; Basket-ball, '27-'30; Captain Basket-ball, '27-'28; Track '28; Baseball, '27-'29; Debate, '27; President Senior Class, '29-'30; Glee Club, '27; Vice-President Stephens Society, '29-'30; Vice-President Student Council, '29-'30; Tiager Club, '27.

*"Trifle with me not—I am
A man of business."*



MARGUERITE TURNER

Statesboro, Georgia

Glee Club, '28-'29; President Junior Class, '28-'29; Vice-President Senior Class, '29-'30; Student Council, '30; Reflector Staff, '30.

"True to her work, her word, and her friends."



Ten Years Hence

With eyes of Hope and Faith we pierce
The vale of sunshine and of tears,
And tell in part the mystery
Of far off, vague, and distant years.

We look beyond for ten long years
And in this misty vision see
A loyal band of faithful friends,
Who love and boost their old "T. C."

A mighty change we find in them
After these many years of toil.
Some sail, some fly across the seas
While others till the fertile soil.

There are those who sell and those who buy
And others keep their books,
And some there are, who win their fame
Upon their virtues and their looks.

We find some, too, who like to write
While others like to teach;
And some there are who like to heal
While others like to preach.

What e'er may be their walk in life
We see and know that one and all
Will serve his Maker and mankind
And ever heed to Duty's call.

—*Leonard Powell.*



EDWIN AND CARLTON CARRUTH, *Mascots*

JUNIOR CLASS



TINY LEE ALDERMAN

Statesboro, Georgia

Stephens Literary Society, '28-'29;
Music Lovers Club, '28-'29.

*"Her voice was ever soft, gentle, and low, an
excellent thing in woman."*



KATHERINE BRETT

Statesboro, Georgia

Home Economics Club, '29-'30; Stephens Society, '29-'30; Y. W. C. A., '29-'30; President D. L. D. Club, '29-'30; Science Club, '29-'30; Glee Club, '29; Social Editor George-Anne, '29; Reflector Staff, '29-'30.

"Loved because she is lovable."



VENNIE CLARK

Meansville, Ga.

Entered '26; Oglethorpe Literary Society; Science Club; Y. W. C. A.; Y. W. C. A. Cabinet, '29-'30.

"There is not one moment without some duty."

LA FIECE COLLINS

Graymont, Georgia

President Student Council, '29-'30; Chaplain Stephens Literary Society, '28; President Stephens Society, '30; Vice-President Junior Class, '29-'30; Football, '27-'30; Track, '29; President Science Club, '29-'30; Reflector Staff, '29.

"Speak briefly and to the point."



JEWELL ANTOINETTE DURRENCE

Claxton, Georgia

Oglethorpe Literary Society, '29-'30; Y. W. C. A., '29-'30; E. E. Club, '29-'30; Reflector Staff, '29-'30.

"If work will do it, she will win."



JOYCE W. GARDNER

Townsend, Georgia

Y. W. C. A., '29-'30; President Student Volunteer Organization, '29-'30; President G. G. Club, '29-'30; Stephens Literary Society, '29-'30; Dramatic Club, '29-'30.

"I know that I know."





RALPH HENDERSON

Gillsville, Georgia

Stephens Society. '27-'30: Glee Club.
'27-'30: Football. '27-'30: Basket-ball.
'27-'30: Baseball. '27-'30: Bachelors Club,
'27-'28.

"Take him all in all, he is a man."



JOSIE HUTCHINSON

Adrian, Georgia

Oglethorpe Society. '27-'30: Secretary
of Oglethorpe Society '28-'29: Tennis
Club. '27-'28: Y. W. C. A.. '27-'30: Treas-
urer Y. W. C. A.. '28-'29.

"Speech is silvern—Silence is golden."



GEORGIA JOHNSON

Garfield, Georgia

Music Club. '27-'29: Oglethorpe So-
ciety. '29-'30: Latin Club. '26-'28.

"Anything for a quiet life."

A. G. MIDDLETON, JR.

Townsend, Georgia

Manager of Football, '27-'28; Secretary and Treasurer Sophomore Class, '28-'29.

"Character makes its own destiny."



TALMAGE ROBERTS

Sylvania, Georgia

Student Council, '29-'30; Stephens Literary Society, '28-'30; Treasurer Stephens Literary Society, '30; Secretary Junior Class, '29-'30; Business Manager Reflector, '29-'30.

"It does not pay to worry; things are bound to happen anyway."

LILLIAN ROCKER

Guyton, Georgia

Entered '27; Secretary Y. W. C. A., '28-'29; Secretary Oglethorpe Literary Society, Winter, '28-'29; Secretary Oglethorpe Society, Fall, '29-'30; President Oglethorpe Literary Society, Spring, '29-'30; Champion Debating Team, '28-'29; Debate, '29-'30; Science Club, '29-'30; Secretary Student Council, '29-'30; President Junior Class, '29-'30; Assistant Editor Reflector, '29-'30; Miss Intellectual, '29-'30.

"The hand that follows intellect can achieve."



PAUL THOMPSON

Vidalia, Georgia

Football, '27-'29; Basket-ball, '27-'30;
Oglethorpe Literary Society, '27-'28; Stu-
dent Council, '28.

*"One who never turned his back
But marched breast forward."*

JAMES VIRGIL TILLERY

Metter, Georgia

Football, '27-'29; Track, '28-'30; Cap-
tain Track Team '29; Science Club, '29-
'30; Stephens Literary Society, '28-'30.

"If ladies interfere with work, let work alone."

S. J. WILLIAMS, JR.

Rocky Ford, Georgia

Oglethorpe Literary Society, '27-'30;
Science Club, '29-'30; McDowell Music
Club, '27-'28.

*"Few things are impossible to diligence and
study."*



BRUCE CARRUTH, *Mascot*

SOPHOMORE CLASS



JOSIE AARON

Aaron, Georgia

Y. W. C. A., '29-'30; Oglethorpe Society, '29-'30; Glee Club, '29-'30.

"As good as she is fair."

ZACK BROWN BLITCH

Stilson, Georgia

Stephens Literary Society, '28-'30.

"None but himself can be his parallel."

EMMA BLOUNT

Vidalia, Georgia

Y. W. C. A., '28-'30; Member Y. W. C. A. Cabinet, '29-'30; Basket-ball, '28-'30; Stephens Society, '28-'30.

"Dignity, with goodness and mi chief, are all combined just here."

LINCOLN BOYKIN

Sylvania, Georgia

Oglethorpe Literary Society, '25, '30; Vice-President Oglethorpe Society, '26.

"Common sense is nature's gift."

RUBY FRANKLIN BRANNEN

Statesboro, Georgia

Stephens Society, '28-'30; Home Economics Club, '28-'30; Y. W. C. A., '28-'30.

"Character is higher than intellect."

MARY ELIZABETH BROWN

Warthen, Georgia

Home Economics Club, '29-'30; Y. W. C. A., '28-'30; Reporter of D. L. D. Club, '29-'30; Secretary of Students Volunteer Association, '29-'30; Glee Club, '28-'30; Stephens Literary Society, '28-'30.

"A cheerful disposition doubles your power."

BERTHA LEE BRUNSON

Register, Georgia

Oglethorpe Literary Society, '29-'30; Y. W. C. A., '29-'30.

"A just fortune awaits the deserving."

PAULINE BURKE

Scott, Georgia

Stephens Society, '28-'30; Basket-ball, '28-'30; Y. W. C. A., '28-'30; Glee Club, '28-'30.

"A light heart lives long."

JOSIE MAE CLARK

Garfield, Georgia

Oglethorpe Literary Society, '29-'30; Glee Club, '29-'30; Y. W. C. A., '29-'30.

"It is what we think and what we do that makes us what we are."

HAZEL MARION DEAL

Statesboro, Georgia

Science Club, '29-'30; T. C. Club, '29-'30; Stephens Society, '29-'30; Y. W. C. A., '29-'30; Cheer Leader, '29-'30; Reflector Staff, '29-'30.

"It is great to know you can if you wish."





EMILY DUBBERLY

Glennville, Georgia

"Modesty expresses carefulness."



RUTH EDENFIELD

Vidalia, Georgia

Y. W. C. A., '28-'29; Cabinet Y. W. C. A., '29-'30; Science Club, '29-'30; Oglethorpe Literary Society, '29-'30; Reflector Staff, '29-'30.

*"Loyal hearted, strong of mind,
A finer girl you'll never find."*



PARNELL ENECKS

Rocky Ford, Georgia

Oglethorpe Literary Society, '28-'29; George-Anne Staff, '29-'30.

"His hand is ready and willing."



J. D. FIELDS, JR.

Swainsboro, Georgia

Stephens Literary Society, '29-'30; Science Club, '29-'30; Football, '29-'30; Basket-ball, '29-'30.

*"Life is what you make it,
Make it worth while."*



ALLIE BELLE FORTNER

Kite, Georgia

Oglethorpe Literary Society, '29-'30; Home Economics Club, '29-'30; Y. W. C. A., '29-'30.

"Know thyself, but don't tell everybody about it."

HERBERT GOODEN
 Willie, Georgia
 Oglethorpe Literary Society, '29.
"Hang sorrow, care'll kill a cat."



BERTIE MACOY GREEN
 Dublin, Georgia
 Oglethorpe Literary Society, '29-'30;
 Home Economics Club, '29-'30; Y. W. C.
 A., '29-'30.
"Quiet in appearance with motives unknown."



CLIFFORD DOROTHY GRINER
 Brooklet, Georgia
 Y. W. C. A., '29-'30; Home Economics
 Club, '29-'30; Stephens Literary Society,
 '29-'30; D. L. D., '29-'30; George-Anne
 Staff, '29; Glee Club, '29; Reflector Staff,
 '30.
"Where hearts are true, few words will do."



DOROTHY MARIE GRINER
 Guyton, Georgia
 Y. W. C. A., '29-'30; Oglethorpe Lit-
 erary Society, '29-'30; Dramatic Club, '29-
 '30.
*"A life as quiet as the deepest stream and a
 heart that is good and true."*



KATHLEEN HARMON
 Swainsboro, Georgia
 President Y. W. C. A., '29-'30; Vice-
 President Sophomore Class, '29-'30; Sec-
 retary Stephens Literary Society, '29-'30;
 Student Council, '29-'30; Home Economics
 Club, '28-'29; Science Club, '29-'30; Glee
 Club, '29-'30; Miss S. G. T. C., '30.
*"Rare companion of quality, noble and true,
 With plenty of sense and good humor, too."*





SARA ETHEL HEIDT

Guyton, Georgia

Y. W. C. A., '29-'30; Stephens Literary Society, '28-'30; G. G. Club, '29-'30; Home Economics Club, '29-'30.

"True as the dial to the sun."

HAROLD HENDRIX

Portal, Georgia

*"Happy am I, from care I'm free:
Why aren't they all contented like me?"*

MARY HENSLEE

Lithia Springs, Georgia

Oglethorpe Literary Society, '29-'30; Y. W. C. A., '29-'30; Student Volunteer, '29-'30.

*"High erected thought, seated in a head of
courtesy."*

RUBY LOUISE JOINER

Statesboro, Georgia

Y. W. C. A., '29-'30; Home Economics Club, '29-'30.

"A loving heart is the truest wisdom."

MILDRED MYRL JONES

Statesboro, Georgia

Home Economics Club, '28-'30; Vice-President Home Economics Club, '28-'30; Y. W. C. A., '28-'30; Oglethorpe Literary Society, '28-'30; Dramatic Club, '28-'29.

"Faithfulness and sincerity first of all."

DORA KING

O'iver, Georgia

Home Economics Club, '27-'28; Y. W. C. A., '27-'30; Oglethorpe Society, '27-'30.
"Demure and quiet is she—

And yet methinks there's something more beneath."



PAULINE LANIER

Statesboro, Georgia

Dramatic Club, '30.

"Her friendship can give an edge to the bluntest sword."



RETA LOUCEIL LEE

Statesboro, Georgia

Y. W. C. A., '28-'30; D. L. D. Club, '28-'30; Basket-ball, '29-'30; Stephens Society, '28-'30; Home Economics Club, '28-'30; President Home Economics Club, '29-'30; Science Club, '29-'30; Glee Club, '28-'29; Reflector Staff, '29-'30.

"It's love, music and laughter this old world is after."



VIRGINIA F. LEWIS

Broxton, Georgia

Y. W. C. A., '28-'30; Stephens Society, '28-'30; Dramatic Club, '28-'30; D. L. D. Club, '29-'30; Delta Psi Omega, '29-'30; President Y. W. C. A., '29; Editor George-Anne, '29; President Stephens Society, Winter, '30.

"Rare as is true love, true friendship is rarer."



ELIZABETH MCGREGOR

Halcyondale, Georgia

Oglethorpe Literary Society, '28-'30; Glee Club, '28-'30; Orchestra, '29-'30; Dramatic Club, '28-'30; E. E. E. Club, '29-'30; Home Economics Club, '29-'30; Y. W. C. A., '29-'30.

"I have a heart with room for everybody."





MORGAN ELMO MALLARD

Savannah, Georgia

Science Club, '28-'30; Glee Club, '28-'29; Stephens Literary Society, '28-'30; Chaplain, Stephens Society, '28-'29; Vice-President Stephens Society, Winter, '29-'30; President Sophomore Class, '29-'30; Student Council, '29-'30; Editor-in-Chief Reflector, '29-'30; Mr. S. G. T. C., '29-'30.

"His popularity is his power."

E. L. MILLER

Stapleton, Georgia

Science Club, '29-'30; Stephens Literary Society, '29-'30.

"Honor lies in honest toil."

ANNIE RUTH MOORE

Macon, Georgia

Y. W. C. A., '28-'30; Y. W. C. A. Cabinet, '29-'30; Science Club, '28-'30; Student Council, '29-'30; Secretary and Treasurer Sophomore Class, '29-'30; Treasurer Oglethorpe Literary Society, Winter, '29; Pianist Oglethorpe Literary Society, Winter, '28-'29; Secretary Oglethorpe Society, Spring, '29-'30.

*"As each day comes, we love her more;
And time goes on forever."*

GEORGIA WALTON MOORE

Statesboro, Georgia

"Ambition has no rest."

SAM NEVILLE

Register, Georgia

*"He was the mildest manner'd man,
That ever scuttled ship or cut a thread."*

SEABORN NEWTON

Millen, Georgia

Varsity Football, '26-'27; Stephens Society, '26-'27—'29-'30; Secretary Freshman Class, '26-'27; Varsity Football, '29-'30.

"Every addition to true knowledge is an addition to human power."

WILLIE NEWTON

Brooklet, Georgia

Y. W. C. A., '28-'30; Stephens Society, '28-'30; G. C. Club, '29-'30; Student Volunteer, '30.

"Great works are performed not by strength, but by perseverance."

ELIZABETH ORR

Pineora, Georgia

Oglethorpe Society, '29-'30; Glee Club, '29-'30; Science Club, '29-'30; Y. W. C. A., '29-'30; Dramatic Club, '29-'30.

"Art is the gift of God."

ADDIE BEATRICE PARKER

Macon, Georgia

Vice-President Y. W. C. A., '29-'30; Vice-President Oglethorpe Society, '29-'30; Reflector Staff, '29-'30; Science Club, '29-'30; Most Original Girl in Who's Who, '29-'30.

"A cheerful disposition doubles your power."

LEONARD POWELL

Vidalia, Georgia

Stephens Literary Society, '28-'30; Science Club, '28-'30; Glee Club, '28-'30; Manager Football Team, '29; Reflector Staff, '29-'30.

"Lend thy serious hearing to what I shall unfold."





EUNICE RACKLEY

Statesboro, Georgia

"Life is too short to work."



HARRIET VIRGINIA ROBERTS

Swainsboro, Georgia

Oglethorpe Society, '28-'30; Y. W. C. A., '28-'30; Secretary Y. W. C. A. Cabinet, '29-'30; Secretary and Treasurer Freshman Class, '28-'30; President T. C. Club, '29-'30.

"Nature designed us to be of good cheer."



JULIAN H. ROBERTS

Hiltonia, Georgia

Stephens Society, '28-'30; Reflector Staff, '29-'30.

"If fame is only to come after death, I'm in no hurry for it."



EARL A. ROUNTREE

Sylvania, Georgia

Oglethorpe Society, '29-'30.

"He is weighed in the balance and not found wanting."



LUCILLE ROUNTREE

Summit, Georgia

Y. W. C. A., '28-'30; Stephens Society, '28-'30; D. L. D., '29-'30; Secretary and Treasurer Glee Club, '28-'29; Glee Club, '29-'30; Dramatic Club, '29-'30; Delta Psi Omega, '29-'30; Home Economics Club, '29-'30.

"Her very frowns are fairer far than smiles of other maidens are."

REBA SATURDAY

Collins, Georgia

Stephens Society, '28-'30; Glee Club, '28-'30; President E. E. E. Club, '29-'30; Y. W. C. A., '28-'30.

"In her—'twas natural to please."

EARLE SPELL

Lyons, Georgia

Stephens Society, '28-'30; Y. W. C. A., '28-'30; Home Economics Club, '29-'30.

"Kind hearts are more than coronets."

ERMA ALEXA STEWART

Portal, Georgia

Music Lovers' Club, '28-'30.

"A merry heart is welcomed anywhere."

JAMES HERBERT STEWART

Portal, Georgia

"Once your friend, always your friend."

MARY SWAIN

Claxton, Georgia

Dramatic Club, '28-'30; Glee Club, '28-'30; Secretary and Treasurer E. E. E. Club, '29-'30; Y. W. C. A., '28-'30; Stephens Society, '28-'30; Delta Psi Omega, '29-'30; President Dramatic Club, '29-'30; Secretary and Treasurer Glee Club, '29-'30.

"Mistress of herself, though China fall."





AVIS TEMPLES

Portal, Georgia

*"Though ambition in itself is a vice,
Yet it is often the parent of virtues."*



MADGE TEMPLES

Statesboro, Georgia

Oglethorpe Literary Society, '28-'29;
Orchestra, '28-'29-'30.

*"Where the stream runneth smoothest, the water
is deepest."*



GRACE THOMAS

Dexter, Georgia

Oglethorpe Literary Society, '29-'30;
Y. W. C. A., '29-'30; Glee Club, '29-'30.

"Doubt is an incentive to search for truth."



WALTON USHER

Guyton, Georgia

President Oglethorpe Literary Society,
Spring, '28-'29, Winter, '29-'30; Cheer
Leader, '29-'30; Reflector Staff, '29-'30;
Glee Club, '29-'30; Baseball Team, '29;
Varsity Club, '29-'30; Most Popular Boy,
'29-'30; Handsomest Boy, '29-'30.

"It is a great plague to be too handsome a man."



STELLA VANLANDINGHAM

Wrightsville, Georgia

Oglethorpe Literary Society, '28-'30;
Treasurer Oglethorpe Society, Spring
Term, '28-'29, Fall Term, '29-'30; Y. W.
C. A., '28-'30; Treasurer Y. W. C. A., '29-
'30; Science Club, '28-'30; Cutest in
Who's Who, '29-'30.

*"Better be small and shine, than great and cast
a shadow."*

ROSALYN WALSH

Garfield, Georgia

Home Economics Club, '29-'30; Science Club, '29-'30; D. L. D. Club, '29-'30; Y. W. C. A., '29-'30; Stephens Literary Society, '29-'30.

"Her air, her manners, all who saw admired."



HENRY BRAKE WATSON

Augusta, Georgia

Entered Winter, '29; Stephens Literary Society.

"A good nature and a ready smile, and a sunny disposition are his."



CORA LEE WYNN

Portal, Georgia

*"Never take life too seriously,
You won't get out alive anyway."*



DANIEL YOUNG

Waycross, Georgia

*"I know not how, I care not why,
Thy music sets my world at ease."*



Sailors on the Sea of Life

Out upon the sea of School-life there's a ship a-sailing
This name—The Ship of Cheer and Hope—is carried upon the railing,
The crew is called—The Sophomores—they're the best in every way
The port for which this ship is bound is known as—Knowledge Bay.

For many days and many nights this ship has been a-sail,
It's weathered many an angry storm and ridden many-a gale,
Sometimes, the crew grew sick at heart and many dropped at ports
But some there were who bore it all, some honest, real, true sports.

And now the port is just ahead, Knowledge Bay is near at hand
Then will come the sad farewell, the parting of the band;
Then each to each must say good-bye and each must choose his way
But words cannot express their thoughts, no matter what they say.

So into the world they'll go, but sailors still they'll be
Although, 'tis true the storms and gales and waves they may not see;
Yet still they'll sail through pleasant seas and still they'll sail through strife
This band may then be truly called,—Sailors on the Sea of Life.





BILLY DONALDSON, *Mascot*

FRESHMAN CLASS



ELIZABETH ADDISON
Statesboro, Ga.

SARA VIRGINIA ANDERSON
Statesboro, Ga.

VERAESTEL ANNETTE ANDERSON
Kite, Ga.

JANE F. ATWOOD
Ridgeville, Ga.

BONNIE LUE AYCOCK
Brooklet, Ga.

BOYD BOSWELL
Garfield, Ga.

HORACE W. BOYKIN
Oliver, Ga.

VANIRA BRADHAM
Millen, Ga.

ROBERT H. BRADLEY
Leefield, Ga.

FLORENCE BRINSON
Wrightsville, Ga.

DORA BROWN
Summit, Ga.

LOIS BURKE
Dover, Ga.

ELIZABETH HULDAH CAIL
Sylvania, Ga.

FRANCES COLEMAN
Graymont, Ga.

SARAH KATHERINE CONE
Statesboro, Ga.

LOUISE COURSEY
Egypt, Ga.





GINCY COWART
Garfield, Ga.

GEORGIA LUCILE COX
Wadley, Ga.

ELEANOR BRUNELLE DEAL
Statesboro, Ga.

THELMA BLANCHE DELOACH
Abbeville, Ga.

J. HUBERT DEWBERRY
Stillmore, Ga.

MARGARET DUNCAN
Millhaven, Ga.

BETTY MILDRED EVERETT
Register, Ga.

BLANCHE FIELDS
Garfield, Ga.

HELEN GILLESPIE
Pulaski, Ga.

ROMA GRIFFIN
Stillmore, Ga.

MILLARD GRIFFITH
Portal, Ga.

SALLIE HAGAN
Statesboro, Ga.

MARIE HENDRIX
Portal, Ga.

PEARL HOLLINGSWORTH
Collins, Ga.

GRACE HUTCHINSON
Adrian, Ga.

G. M. JONES
Whigham, Ga.





JEAN KICKLIGHTER
Glennville, Ga.

MONTEZ KICKLIGHTER
Glennville, Ga.

ETHEL LEE
Brooklet, Ga.

AGNES LEWIS
Garfield, Ga.

ERMA RUTH LEWIS
Statesboro, Ga.

ANITA LEE LUNSFORD
Cleveland, Ga.

OCOMA MCDANIEL
Dublin, Ga.

VERA McELVEEN
Brooklet, Ga.

ROBERT LEE MARR
Waycross, Ga.

MARTHA MARTIN
Wrightsville, Ga.

BEATRICE W. MIDDLETON
Townsend, Ga.

CHRISTINE ELISE MINGLEDORFF
Clyo, Ga.

JEWELL MORRIS
Norway, S. C.

EMILY MOYE
Wrightsville, Ga.

EUGENE H. MURPHY
Bremen, Ga.

TELMLEE NEW
Patterson, Ga.





WILMA NEW
Lyons, Ga.

MARY EVELYN OLLIFF
Register, Ga.

NENA L. PEEL
Woodcliff, Ga.

REGINA PERKINS
Alma, Ga.

THURLA PRICE
Harrison, Ga.

CLEO RIMES
Lanier, Ga.

MAMIE RIXER
Wrightsville, Ga.

JOHN ELLIS ROUNTREE
Summit, Ga.

FRANK RUSHING
Statesboro, Ga.

TYRA SATURDAY
Collins, Ga.

EVALYN SIMMONS
Statesboro, Ga.

DORA ELLEN SMITH
Sylvania, Ga.

MARGARET MADELLE STEVENS
Stevens Crossing, Ga.

MILDRED STEWART
Eastman, Ga.

PEARL LUCILE SUDDATH
Portal, Ga.

HELEN E. TAYLOR
Augusta, Ga.





JEWELL AUGUSTUS THOMAS
Statesboro, Ga.

MAEDELL TURNER
Statesboro, Ga.

BESSIE URQUHART
Wrightsville, Ga.

SADIE USHER
Guyton, Ga.

WILLIE RUDE USHER
Springfield, Ga.

OLEN MALCOLM WARNOCK
Register, Ga.

IMOGENE WATERS
Statesboro, Ga.

JANE EVANS WATSON
Register, Ga.

IRIS WALKER
Screven, Georgia

HELEN WELLS
Reidsville, Georgia

RALPH STEPHENS
Wrens, Georgia



If---

(With apologies to Mr. Kipling.)

*If you can keep your head when Seniors ask you
The million questions they are prone to ask,
If you can stand aside and let one pass you
And hurry to his all-important task;
If you can smile and overlook an error
Made by a person of much lower rank,
And pass it up and be a little merrier
Just waiting for his next dumb "playful prank;"*

*If you can learn and not make books your master
But take that which our old world has to teach;
If you can face your problems with gay laughter
And not yearn for pleasures out of reach;
If you are fired with holy patriotism
And joy in the better things you see,
You are a very gifted sportsman
And worthy Freshman of T. C.*

Calendar



- September 10-11 Registration.
- September 12 . School opens.
- October 15 . . Reflector Staff elected.
- October 28-Nov. 1 Bulloch County Fair.
- October 22 . . Hallowe'en Party (Sophomores entertain).
- November 5 . . Grand Jury inspects school.
- November 7 . . Savannah Rotary Club met here.
- November 20 . Trustees hold meeting at school.
- November 28 . Thanksgiving Holiday.
- November 30 . Stephens and Oglethorpe Societies entertain.
- December 2 . . New Term begins.
- December 11 . Football banquet.
- December 15 . Y. W. C. A. serenades with Christmas Carols.
- December 17 . Boys' Basket-ball season opens.
 Final Soccer game between Freshmen and Sophomores.
- December 18 . Debate between Stephens and Oglethorpe Literary Societies.
- December 19 . Freshman Banquet.
- December 20 . Christmas Holidays begin.
- January 7 . . Classes begin.
- January 17 . . Election of Who's Who.
- January 30 . . Snow.
- February 11 . Play "Message From Mars" by Piedmont Players.
- February 15 . Valentine Party—Juniors and Seniors entertain.
- February 24 . Track and Baseball training begins.
- February 21 . Mr. Wells attending N. E. A. at Atlantic City.
- February 26 . Robert O. Briggs, humorist, from Piedmont Bureau.
- February 28 . Annual goes to press.



SEABORN ALTON NEWTON, JR., *Mascot*

SUB-FRESHMAN CLASS



Sub-Freshman Class

MEMBERS

ALEXANDER, EWELL	MATHIS, FRED
ALFORD, EMMITT	METTS, A. J.
AVERETT, MILDRED	METZGLER, JOHN W.
BENNETT, E. H.	MINNEHAN, THOMAS
BRANNEN, EDNA	NESSMITH, AMBROSE
BRUNSON, JAMES	NEWTON, B. B., JR.
BYRD, FONNIE	OGLESBEE, ELLIS
CLARK, FLOYD	PHILLIPS, RALPH
FRANKLIN, GEORGE	ROUGHTON, MARY J.
GIBSON, PEGGY RUTH	SCOTT, WILLIE K.
GRINER, IRENE	SMITH, VELMA
HAGINS, JESSIE	SMITH, VIRGINIA
HENDRIX, ARNOLD	STAFFORD, ANNIE BELLE
HODGES, MARTHA	STANLEY, MARIE
HODGES, REX	STEVENS, NANNIE PEARL
JONES, FREDERICK	THOMPSON, HAROLD
KETTLES, CARL	WILLIAMS, MARGARET
MARTIN, P. W., JR.	ZETTEROWER, NORA



Campus Scene

ACTIVITIES



Student Council

DEAN Z. S. HENDERSON *Faculty Advisor*

MEMBERS

BOYD BOSWELL

WALDO PAFFORD

LA FIECE COLLINS

TALMAGE ROBERTS

KATHLEEN HARMON

LILLIAN ROCKER

ELMO MALLARD

JOHN ELLIS ROUNTREE

ANNIE RUTH MOORE

HAROLD THOMPSON

LESTER NEWTON

MARGUERITE TURNER



Y. W. C. A. Cabinet

KATHLEEN HARMON	<i>President</i>
ADDIE B. PARKER	<i>Vice-President</i>
HARRIET ROBERTS	<i>Secretary</i>
STELLA VANLANDINGHAM	<i>Treasurer</i>
MISS EMILY SIMPSON	<i>Sponsor</i>

CABINET

RUTH EDENFIELD
GRACE HUTCHINSON
VENNIE CLARK

EMMA BLOUNT
SARA KATHERINE CONE
ANNIE RUTH MOORE

DORA SMITH



Y. W. C. A.

MEMBERS

AARON, JOSIE
 ADDISON, ELIZABETH
 ANDERSON, SARA
 ASHMORE, RUBY
 ATWOOD, JANE
 AVERETT, MILDRED
 AYCOCK, BONNIE LUE
 BIRD, SALLIE JOE
 BLOUNT, EMMA
 BRADHAM, VANIRA
 BRETT, KATHERINE
 BREWTON, INEZ
 BRINSON, FLORENCE
 BROWN, MARY
 BRUNSON, BERTHA LEE
 BURKE, LOIS
 BURKE, PAULINE
 CARTER, FRANCES
 CAIL, HULDAH
 CLARK, JOSIE MAE
 CLARKE, VENNIE
 COLEMAN, FRANCES
 COMPTON, EUCLID
 CONE, SARA KATHERINE
 COURSEY, LOUISE
 COWART, GINCY
 COX, LUCILLE
 DAUGHTRY, KATHLEEN
 DEAL, BRUNELLE
 DELOACH, BLANCHE
 DUNCAN, MARGARET
 DURRENCE, JEWELL
 EDENFIELD, RUTH
 EVERETT, MILDRED
 FIELDS, BLANCHE

FORTNER, ALLIE BELLE
 GARDNER, JOYCE
 GIBSON, PEGGY RUTH
 GILLESPIE, HELEN
 GREEN, BERTIE
 GRINER, CLIFFORD
 GRINER, DOROTHY
 HAGINS, JESSIE
 HAGAN, SALLIE
 HARMON, KATHLEEN
 HEIDT, ETHEL
 HENDRIX, MARIE
 HENSLEE, MARY
 HOLLINGSWORTH, PEARL
 HUTCHINSON, GRACE
 HUTCHINSON, JOSIE
 JONES, MILDRED
 KING, DORA
 LEE, ETHEL
 LEE, RETA
 LEWIS, ERMA RUTH
 LEWIS, VIRGINIA
 LUNSFORD, ANITA
 MARTIN, MARTHA
 MCDANIEL, OCOMA
 MCELVEEN, VERA
 MCGREGOR, ELIZABETH
 MIDDLETON, BEATRICE
 MINGLEDORFF, CHRISTINE
 MOORE, ANNIE RUTH
 MORRIS, JEWELL
 MOYE, EMILY
 NEW, TELMLEE
 NEW, WILMA

NEWTON, WILLIE
 OGLESBEE, ELLIS
 OLLIFF, EVELYN
 ORR, ELIZABETH
 PEEL, NENA
 PERKINS, REGINA
 PARKER, ADDIE B.
 PRICE, THURLA
 RIMES, CLEO
 RINER, MAMIE
 ROBERTS, HARRIET
 ROCKER, LILLIAN
 ROUNTREE, LUCILE
 RUSHING, RUBY DELL
 SATURDAY, REBA
 SATURDAY, TYRA
 SCOTT, WILLIE
 SIMMONS, EVALYN
 SMITH, VELMA
 SMITH, DORA
 STANLEY, MARIE
 STEWART, MILDRED
 SUDDATH, LUCILE
 SWAIN, MARY
 TAYLOR, HELEN
 THOMAS, GRACE
 TURNER, MAEDELLE
 URQUHART, BESSIE
 USHER, SADIE
 VANLANDINGHAM, SILLA
 WALSH, ROSALYN
 WALKER, IRIS
 WATSON, JANE
 WELLS, HELEN
 ZETTEROWER, NORA



PRESIDENTS

LA FIECE COLLINS

VIRGINIA LEWIS

WALDO PAFFORD

DEBATERS

BONNIE LUE AYCOCK

WALDO PAFFORD

VERA McELVEEN

LEONARD POWELL

MASCOT

MARGARET ANNE WELLS

SPONSORS

MISS NEWTON

MR. DONALDSON

THE STEPHENS SOCIETY

Fall

President LA FIECE COLLINS
Vice-President WALDO PAFFORD
Secretary KATHLEEN HARMON
Treasurer TALMAGE ROBERTS
Pianist MARIE HENDRIX
Song Leader HULDAH CAIL
Chaplain RALPH HENDERSON

Winter

VIRGINIA LEWIS
 ELMO MALLARD
 FRANCES COLEMAN
 TALMAGE ROBERTS
 RUBY DELL RUSHING
 HULDAH CAIL
 HUBERT DEWBERRY

Spring

WALDO PAFFORD
 KATHERINE BRETT
 DORA SMITH
 TALMAGE ROBERTS
 MAEDELLE STEVENS
 HAZEL DEAL
 RALPH STEPHENS



The Stephens Society

Pledge: "On my honor, I pledge myself to stand for the ideals of the Stephens Society and in every way do my part towards making the Society better and more useful."

MEMBERS

ADDISON, ELIZABETH
ALEXANDER, EWEEL
ANDERSON, SARA
AYCOCK, BONNIE LUE
AVERETT, MILDRED
BLITCH, BROWN
BLOUNT, EMMA
BRADHAM, VANIRA
BRETT, KATHERINE
BREWTON, INEZ
BROWN, MARY
BURKE, LOIS
BURKE, PAULINE
BIRD, SALLY JO
CAIL, HULDAH
CARTER, FRANCES
CLARK, SID
COLEMAN, FRANCES
COLLINS, LA FIECE
CONE, SARA KATHERINE
COWART, GINCY
COX, LUCILE
DAUGHTRY, KATHLEEN
DEAL, HAZEL
DONALDSON, MR. ROBERT
DEWBERRY, HUBERT
DUNCAN, MARGARET
DURDEN, BILLIE
EDENFIELD, MAX
EVERETT, MILDRED
FIELDS, BLANCHE
FIELDS, J. D.

GARDNER, JOYCE
GIBSON, PEGGY RUTH
GILLESPIE, HELEN
GRINER, CLIFFORD
HAGAN, SALLIE
HARMON, KATHLEEN
HEIDT, ETHEL
HENDRIX, MARIE
HENDERSON, RALPH
JONES, BUCK
JONES, CARLYLE
JONES, FRITZ
KINNEY, EUGENE
KICKLIGHTER, MONTEZ
LEE, ETHEL
LEE, RETA
LEWIS, VIRGINIA
LUNSFORD, ANITA
MALLARD, ELMO
MARTIN, PEYTON
MCDANIEL, OLOMA
MCELVEEN, VERA
METZGLER, JOHN
MILLER, E. L.
MINGLEDORFF, CHRISTINE
MORRIS, JEWELL
NEW, WILMA
NEWTON, MISS HESTER
NEWTON, WILLIE
NEWTON, SEABORN
OLLIFF, EVELYN
PAFFORD, WALDO

PEEL, NENA
PERKINS, REGINA
PHILLIPS, RALPH
POWELL, LEONARD
RENEROE, CLAUDE
ROBERTS, JULIAN
ROBERTS, TALMAGE
ROUNTREE, LUCILE
ROUNTREE, JOHN ELLIS
SATURDAY, REBA
SATURDAY, TYRA
SIMMONS, EVALYN
SMITH, VELMA
SMITH, DORA
SIELL, EARLE
STANLEY, MARIE
STANLEY, ORVILLE
STEVENS, MADELL
STEVENS, NANNIE PEARL
STEPHENS, RALPH
STEWART, MILDRED
SUDDATH, LUCILE
SWAIN, MARY
TAYLOR, HELEN
THOMISON, HAROLD
TILLERY, JAMES
TURNER, MADELL
URQUHART, BESSIE
WALSH, ROSALYN
WATSON, JANE
WATSON, HENRY
WILLIAMS, LYMAN



Oglethorpe Literary Society

OFFICERS

Fall

F. H. SILLS, JR.	President
ADDIE B. PARKER	Vice-President
LILLIAN ROCKER	Secretary
STELLA VANLANDINGHAM	Treasurer
WALTON USHER	Chaplain
DAN YOUNG	Pianist
WALTON USHER	Cheer Leader

Winter

WALTON USHER	President
GRACE HUTCHINSON	Vice-President
JOSIE HUTCHINSON	Secretary
ANNIE RUTH MOORE	Treasurer
LESTER NEWTON	Chaplain
DAN YOUNG	Pianist
FLORENCE BRINSON	Cheer Leader

Spring

LILLIAN ROCKER	President
LESTER NEWTON	Vice-President
ANNIE RUTH MOORE	Secretary
VENNIE CLARK	Treasurer
EARL ROUNTREE	Chaplain
DAN YOUNG	Pianist
WALTON USHER	Cheer Leader

DEBATERS

WILLIE RUDE USHER

LILLIAN ROCKER

WALTON USHER

SPONSORS

COACH B. L. SMITH

MISS MARIE WOOD



Oglethorpe Literary Society

MEMBERS

AARON, JOSIE
 ANDERSON, VERA
 ATWOOD, JANE
 BENNETT, E. H.
 BOSWELL, BOYD
 BOYKIN, HORACE
 BOYKIN, LINCOLN
 BRADLEY, ROBERT
 BRINSON, FLORENCE
 BRUNSON, BERTHA LEE
 CLARK, JOSIE MAE
 CLARK, VENNIE
 COMPTON, EUCLID
 COURSEY, LOUISE
 DEAL, BRUNELLE
 DELOACH, BLANCHE
 DELOACH, RUDOLPH
 DONALDSON, VIVIAN
 DURRENCE, JEWELL
 EDENFIELD, RUTH
 FORTNER, ALLIE BELLE

GOODEN, HERBERT
 GREEN, BERTIE
 GRINER, DOROTHY
 HAGINS, JESSIE
 HENSLEE, MARY
 HUTCHINSON, GRACE
 HUTCHINSON, JOSIE
 JONES, MILDRED
 KICKLIGHTER, JEAN
 KING, DORA
 LEWIS, AGNES
 MARR, ROBERT L.
 MARTIN, MARTHA
 MCGREGOR, ELIZABETH
 MIDDLETON, BEATRICE
 MOORE, ANNIE RUTH
 MOYE, EMILY
 NEW, TELMLEE
 NEWTON, LESTER
 OGLESBEE, ELLIS

ORR, ELIZABETH
 PARKER, ADDIE B.
 PRICE, THURLA
 RIMES, CLEO
 RINER, MAMIE
 ROBERTS, HARRIET
 ROCKER, LILLIAN
 ROUNTREE, EARL
 SCOTT, WILLIE
 STAFFORD, ANNIE BELLE
 THOMAS, GRACE
 USHER, SADIE
 USHER, WALTON
 USHER, WILLIE RUDE
 VANLANDINGHAM, STELLA
 WALKER, IRIS
 WARNOCK, OLEN
 WELLS, HELEN
 WILLIAMS, S. J.
 YOUNG, DANIEL
 ZETTEROWER, NORA



The Reflector Staff

ELMO MALLARD	Editor
LILLIAN ROCKER	Assistant Editor
TALMAGE ROBERTS	Business Manager
HAZEL DEAL	Advertising Manager
WALTON USHER	Assistant Advertising Manager
KATHERINE BRETT	Assistant Advertising Manager
LEONARD POWELL	Circulating Manager
CLIFFORD GRINER	Assistant Circulating Manager
STELLA VANLANDINGHAM	Assistant Circulating Manager
JEWELL DURRENCE	Art Editor

MARGUERITE TURNER	Literary Editor
ANNIE RUTH MOORE	Assistant Literary Editor
RUTH EDENFIELD	Assistant Literary Editor
ADDIE B. PARKER	Photographic Editor
JULIAN ROBERTS	Assistant Photographic Editor
LESTER NEWTON	Sports Editor
RETA LEE	Assistant Sports Editor
LA FIECE COLLINS	Club Editor
JOSIE HUTCHINSON	Assistant Club Editor

Business Sponsor
MR. DONALDSON

Literary Sponsor
MISS CLAY



George-Anne Staff

RALPH STEPHENS *Editor-in-Chief*

DORA SMITH *Assistant Editor*

SARA KATHERINE CONE *News Editor*

VERA McELVEEN *Campus Editor*

BLANCHE FIELDS *Alumni Editor*

FLORENCE BRINSON *Joke Editor*

ROBERT LEE MARR *Printer*

EUGENE MURPHY *Printer*

BLANCHE DELOACH *Type*

MISS CLAY *Sponsor*



Glee Club

OFFICERS

HULDAH CAIL	<i>President</i>
LUCILLE FUTRELLE	<i>Vice-President</i>
MARY SWAIN	<i>Secretary and Treasurer</i>
MARIE HENDRIX	<i>Assistant Pianist</i>
MISS LENA BELLE BRANNEN	<i>Director</i>

MEMBERS

AARON, JOSIE
 AYCOCK, BONNIE LUE
 BRINSON, FLORENCE
 BROWN, DORA
 BROWN, MARY
 BURKE, PAULINE
 CAIL, HULDAH
 CLARKE, JOSIE MAE
 CONE, SARA KATHERINE
 COURSEY, LOUISE
 COWART, GINCY
 DEAL, HAZEL
 DUNCAN, MARGARET
 EVERETT, MILDRED
 FIELDS, BLANCHE

FORTNER, ALLIE BELLE
 FUTRELLE, LUCILLE
 GIBSON, PEGGY RUTH
 HARMON, KATHLEEN
 HENDERSON, RALPH
 HENDRIX, MARIE
 HOLLINGSWORTH, PEARL
 LEWIS, AGNES
 LEWIS, ERMA RUTH
 LUNSFORD, ANITA
 MCDANIEL, OCOMA
 MCGREGOR, ELIZABETH
 MINGLEDORFF, CHRISTINE
 MORRIS, JEWELL

MOYE, EMILY
 NEW, WILMA
 POWELL, LEONARD
 PRICE, THURLA
 RINER, MAMIE
 ROUNTREE, LUCILE
 SIMMONS, EVALYN
 STEVENS, MAEDELLE
 STEWART, MILDRED
 SUDDATH, LUCILE
 SWAIN, MARY
 TAYLOR, HELEN
 THOMAS, GRACE
 USHER, WALTON
 WATSON, JANE



Richards Home Economics Club

Motto: "*Patience Wins.*"

OFFICERS

RETA LEE	<i>President</i>
BLANCHE FIELDS	<i>Vice-President</i>
FRANCES COLEMAN	<i>Secretary and Treasurer</i>
MISS ROBERTSON	<i>Sponsor</i>

MEMBERS

ANDERSON, SARA
 BRADHAM, VANIRA
 BRETT, KATHERINE
 BREWTON, INEZ
 BROWN, MARY
 CAIL, HULDAH
 COLEMAN, FRANCES
 COMPTON, EUCLID
 EVERETT, MILDRED
 FIELDS, BLANCHE
 FORTNER, ALLIE BELLE
 GILLESPIE, HELEN

GREEN, BERTIE
 GRINER, CLIFFORD
 HAGINS, JESSIE
 HENDRIX, MARIE
 HOLLINGSWORTH, PEARL
 JONES, MILDRED
 LEE, RETA
 LEWIS, AGNES
 LEWIS, ERMA RUTH
 MCDANIEL, OCOMA
 MARTIN, MARTHA
 OGLESBEE, ELLIS
 ZETTEROWER, NORA

PEEL, NENA
 PERKINS, REGINA
 PRICE, THURLA
 RIMES, CLEO
 ROUNTREE, LUCILE
 SCOTT, WILLIE
 STANLEY, MARIE
 SPELL, EARL
 SUDDATH, LUCILE
 SMITH, VELMA
 TAYLOR, HELEN
 WALSH, ROSALYN



Popular Science Club

MISS TRUSELL Sponsor

MEMBERS

BRETT, KATHERINE
CLARK, VENNIE
COLEMAN, FRANCES
COLLINS, LA FIECE
CONE, SARA KATHERINE
DEAL, HAZEL
DEWBERRY, HUBERT
EDENFIELD, RUTH
FIELDS, BLANCHE
FIELDS, J. D.
HARMON, KATHLEEN
HENDERSON, RALPH

KICKLIGHTER, JEAN
LEE, RETA
LEWIS, VIRGINIA
MALLARD, ELMO
McELVEEN, VERA
MILLER, E. L.
MOORE, ANNIE RUTH
MURPHY, EUGENE
NEWTON, LESTER
NEWTON, SEABORN
OLLIFF, EVELYN
ORR, ELIZABETH
POWELL, LEONARD

ROCKER, LILLIAN
ROUNTREE, JOHN ELLIS
SIMMONS, EVALYN
SMITH, DORA
STEPHENS, RALPH
SUDDATH, LUCILE
THOMPSON, PAUL
TILLERY, JAMES
VANLANDINGHAM, STELLA
WALSH, ROSALYN
WILLIAMS, S. J.
YOUNG, DAN



D. L. D. Club

Motto: "Out for a good time in an old-fashioned way."

Flower: *Old-Maids*

Colors: *Old Rose and Gold*

OFFICERS

MISS MALVINA TRUSSELL	Sponsor
KATHERINE BRETT	President
VIRGINIA LEWIS	Vice-President
KATHLEEN HARMON	Secretary and Treasurer

Delta Psi Omega

NATIONAL DRAMATIC SORORITY
Chartered 1929



ELIZABETH ADDISON

ELIZABETH ORR

LUCILE ROUNTREE

VIRGINIA LEWIS

Dramatic Club

Organized 1924



ELIZABETH ADDISON

DOROTHY GRINER

LUCILE ROUNTREE

JOYCE GARDNER

VIRGINIA LEWIS

BONNIE LUE AYCOCK

ELIZABETH ORR

JOSIE HUTCHINSON

DORA KING

KATHLEEN HARMON

MRS. J. O. JOHNSTON

PAULINE LANIER

HARRIET ROBERTS

CLUB ROLL

MRS. J. O. JOHNSTON

ADDISON, ELIZABETH
ALDERMAN, TINY LEE
AYCOCK, BONNIE LUE
BIRD, SALLY JOE
DOUGLAS, FRANCES
DUNCAN, MARGARET

DURDEN, BILLIE
GARDNER, JOYCE
GRINER, DOROTHY
HARMON, KATHLEEN
HUTCHINSON, JOSIE
JOHNSON, SARA LOIS

KINNEY, EIGENE
KING, DORA
LANIER, PAULINE
LEWIS, VIRGINIA
MARTIN, PEYTON
ORR, ELIZABETH

Sponsor

OLLIFF, PEARL
RENFROE, CLAUDE
ROBERTS, HARRIET
ROUNTREE, LUCILE
SWAIN, MARY



Taurus Club

Taurus—Strength.

“Rejoice, my friend, if God has made you strong;
Put forth your force to move the world along;
Yet never shame your strength to do a wrong.”

—*Van Dyke.*

OFFICERS

HARRIET ROBERTS	<i>President</i>
EVELYN OLLIFF	<i>Vice-President</i>
EVALYN SIMMONS	<i>Secretary</i>
DORA SMITH	<i>Treasurer</i>
HAZEL DEAL	<i>Parliamentarian</i>
SARA KATHERINE CONE	<i>Court Jester</i>

MEMBERS

CAIL, HULDAH
 COLEMAN, FRANCES
 CONE, SARA KATHERINE
 DEAL, HAZEL
 OLLIFF, EVELYN

ROBERTS, HARRIET
 SIMMONS, EVALYN
 SMITH, DORA
 SUDDATH, LUCILE
 WATSON, JANE



J. U. G. Club

OFFICERS

FLORENCE BRINSON	President
TELMLEE NEW	Vice-President
MISS WOOD	Sponsor

MEMBERS

BLOUNT, EMMA	LEWIS, ERMA RUTH
BRINSON, FLORENCE	MARTIN, MARTHA
BURKE, PAULINE	MORRIS, JEWELL
FIELDS, BLANCHE	NEW, TELMLEE
GIBSON, PEGGY RUTH	STANLEY, MARIE
HUTCHINSON, GRACE	WOOD, MISS



E. E. E. Club

OFFICERS

REBA SATURDAY *President*
 OCOMA MCDANIEL *Vice-President*
 MARY SWAIN *Secretary and Treasurer*

SPONSORS

MISS MARIE WOOD

MRS. R. E. FULLILOVE

MEMBERS

BROWN, DORA

MCGREGOR, ELIZABETH

COURSEY, LOUISE

SATURDAY, REBA

DUNCAN, MARGARET

SATURDAY, TYRA

DURRENCE, JEWELL

STEWART, MILDRED

MCDANIEL, OCOMA

SWAIN, MARY

TAYLOR, HELEN



G. G. Club

MOTTO:

"Hitch your wagon to a star, keep
your seat and there you are."

COLORS: *Pink and Silver*

FLOWER: *Pink Tea Rose*

OFFICERS

JOYCE GARDNER	<i>President</i>
GINCY COWART	<i>Vice-President</i>
JANE ATWOOD	<i>Secretary</i>
MRS. R. E. FULLILOVE	<i>Sponsor</i>

MEMBERS

ATWOOD, JANE
AYCOCK, BONNIE LUE
BURKE, LOIS
CARTER, FRANCES
COWART, GINCY
COX, LUCILE
DELOACH, BLANCHE

EVERETT, MILDRED
GARDNER, JOYCE
GILLESPIE, HELEN
HAGAN, SALLIE
HEIDT, ETHEL
HOLLINSWORTH, PEARL
LEE, ETHEL
LUNSFORD, ANITA

MIDDLETON, BEATRICE
MINGLEDORFF, CHRISTINE
NEWTON, WILLIE
PEEL, NENA
PERKINS, REGINA
URQUHART, BESSIE
WELLS, HELEN



Student Volunteer Association

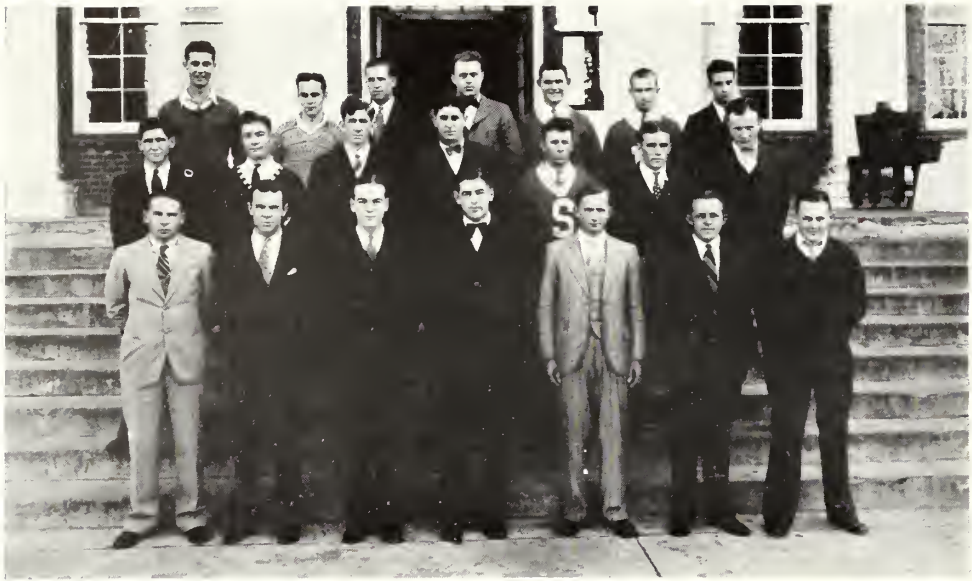
MISS SIMPSON		<i>Sponsor</i>
ATWOOD, JANE	EDENFIELD, RUTH	MIDDLETON, BEATRICE
BROWN, MARY	GARDNER, JOYCE	McELVEEN, VERA
CAIL, HULDAH	HARMON, KATHLEEN	NEWTON, WILLIE
DEAL, BRUNELLE	HENSLEE, MARY	SIMMONS, EVALYN
DUNCAN, MARGARET	LUNSFORD, ANITA	SMITH, DORA



Who's Who

Most Intellectual
 S. J. WILLIAMS, JR.
 LILLIAN ROCKER
Most Cheerful
 RALPH HENDERSON
 HARRIET ROBERTS

Most Talented
 DAN YOUNG
 LUCILLE ROUNTREE
Cutest
 STELLA VANLANDINGHAM



Varsity Club

OFFICERS

PAUL THOMPSON	<i>President</i>
LESTER NEWTON	<i>Vice-President</i>
LA FIECE COLLINS	<i>Secretary</i>
J. D. FIELDS	<i>Treasurer</i>

MEMBERS

BEASLEY, JOHNNIE
 BRANNEN, BILL
 CLARK, SID
 COLLINS, LA FIECE
 FIELDS, J. D.
 GILLESPIE, MALCOLM
 HENDERSON, RALPH
 JONES, FRITZ
 KETTLES, CARL
 MINNEHAN, THOMAS

NEWTON, LESTER
 NEWTON, SEABORN
 PAFFORD, WALDO
 PURCELL, HARRY
 ROUNTREE, JOHN ELLIS
 THOMPSON, PAUL
 THRIFT, GEORGE
 TILLERY, JAMES
 USHER, WALTON
 WRENS, HARRY

Athletics

IT is the purpose of athletics to promote physical, moral, ethical, and social development. There seems to be no aspect of college life better entrenched than the interest in athletics. Athletic teams have become the pivot around which college spirit is built. So significant has become this situation that the school is often judged by the strength of its teams. Millions of dollars are spent each year upon inter-collegiate contests. These contests draw the alumni and friends of the college together, and they all yell fervently for their team to win.

However, if the only purpose of colleges be to produce athletic teams, then the college has failed in the primary purpose of athletics—that of developing the individual student into a well-rounded man. A well-rounded man is the purpose of athletics at South Georgia Teachers College. It is to be regretted that the facilities of South Georgia Teachers College have not been such that every student could receive the attention due him. This condition has been realized by the college authorities and every effort is being made to place college athletics on the proper plane to meet the needs of the students.

We glory to know that by next spring our new gymnasium will have been erected to accommodate the physical needs of so many of our young women and young men. The day is almost here when the benefits of athletics shall not be bestowed only to the already physically favored few but all students shall receive the advantages for which they pay and to which they are entitled by the progressive spirit of education.

Until this time shall come, and only until then, have we the right to accord to our athletic system the phrase which the Duke of Wellington accorded to English athletics when he said that the battle of Waterloo was won on the football field at Rugby.

Baseball

The Blue Tide must enter into the baseball campaign with only one letter man returning. Gone is that sterling battery of Wilson and Rountree. If Coach Smith can develop a winning team with the baseball material on hand—then everyone must agree that the days of miracles are still with us. As this goes to press, Lester Newton is the sole survivor of last year's championship team.



Boys' Basket-Ball Team

B. L. (Crook) SMITH *Coach*

LINCOLN BOYKIN

MALCOLM GILLESPIE

HARRY PURCELL

SID CLARK

J. D. LANIER

PAUL THOMPSON

MAX EDENFIELD

LESTER NEWTON

HAROLD THOMPSON

J. D. FIELDS

WALDO PAFFORD

OLEN WARNOCK

Basket-Ball

SOUTH Georgia Teachers College basket-ball team undertook the hardest schedule in the history of the school. On account of handicaps the tide was never able to start the same team twice. The season was finished with a 50-50 per cent. among the colleges and a loss in the tournament to the strong Dahlongega team by the score of 29-28.

The Girls' Athletics

The girls had intermural athletics throughout the year. In the fall soccer was played. There was a great deal of enthusiasm throughout the season. In the tournament the first game was that of the Sub-Freshmen and the Freshmen, the Freshmen winning by a score of 3-1. The next game was that of the Sub-Freshmen and the Sophomores, the score being two to one with the Sophomores the victors. Next, was one of the most interesting games, that of the Freshmen and Sophomores. Both played a very good game, the score being 0-0. Later the tie was played off, the Freshmen winning by a score of 2-0, proving them the champions. The Sophomores challenged the lady members of the faculty for a game. This game had more enthusiasm than any of the other games of the season. Every one enjoyed seeing Miss Michael standing out on the soccer field holding the umbrella open over her, waiting for the ball to come in her division so she could give it a kick. Miss Newton, another star player, gave many thrills. While trying to protect the goal, she would rush madly back to the umbrella which managed to save her from the rain. Mrs. Bell, on every occasion the ball went in her area, gave everyone a laugh as she tried to kick it. At the end of the game Miss Trussell picked up the ball and ran for a touchdown.

Those playing for the faculty were: Misses Simpson, Trussell, Newton, Michael, Stubbs, Brannen, Shuptrine, Mrs. Bell and Mrs. Carruth.

Soccer Class Captains

EDNA BRANNEN	<i>Sub-Freshmen</i>
EVALYN SIMMONS	<i>Freshmen</i>
EMMA BLOUNT	<i>Sophomores</i>

Inter-class tournaments are to be held in basket-ball, baseball, tennis, track for the girls.

The girls' basket-ball team had a few inter-collegiate games—two with B. P. I., winning both; two with the Y. W. C. A. of Savannah, losing both; one with Cochran.

Girls' Basket-Ball Schedule

	<i>Date</i>	<i>Where Played</i>	<i>Score</i>
B. P. I.	January 18	Home	30-10
Y. W. C. A.	February 1	Home	
B. P. I.	February 7	Mt. Vernon	25-21
Y. W. C. A.	February 15	Savannah	41-27
Cochran	February 25	Cochran	



Girls' Basket-Ball Team

EMMA BLOUNT *Captain*

MISS EMILY SIMPSON *Coach*

BLOUNT, EMMA

LEE, RETA

BRANNEN, ERMA

ORR, ELIZABETH

BRINSON, FLORENCE

NEW, WILMA

BURKE, PAULINE

PRICE, THURLA

CAIL, HULDAH

RINER, MAMIE

DEAL, HAZEL

STEWART, MILDRED

EVERETT, MILDRED

SUDDATH, LUCILE

GRIFFIN, ROMA

SWAIN, MARY

GRINER, DOROTHY

TURNER, MAEDELLE

USHER, SADIE



Girls' Soccer Team

EVALYN SIMMONS *Captain*

ANDERSON, VERA

NEW, WILMA

BRADHAM, VANIRA

PRICE, THURLA

BRINSON, FLORENCE

RINER, MAMIE

CAIL, HULDAH

SIMMONS, EVALYN

GILLESPIE, HELEN

STEWART, MILDRED

HENDRIX, MARIE

SUDDATH, LUCILE

McELVEEN, VERA

WELLS, HELEN



The Gazing Globe

FEATURES



KATHLEEN HARMON

Miss S. G. T. C.

"To know her is to love her," is as true
as true can be
When these words above are spoken of
our Miss S. G. T. C.
Not a one who knows her ever said a
word of harm
But all soon learn to love her for her
sweetness and her charm.

ELMO MALLARD

Mr. S. G. T. C.

With a love for work and a will to do.
He makes many friends and enemies
few;
In the things he tries he's sure to suc-
ceed,
For he was born to win and born to
lead.





GINCY COWART

Most Beautiful Girl

"A thing of beauty is a joy forever" so said
the poet wise
So always a joy this maiden will be, this maid
with the dark brown eyes.
Her movements of grace and her lovely face
Cause beauty in her to find a dwelling place.



WALTON USHER

Handsomest and Most Popular Boy

If you've met this boy you'll understand
How good looks and popularity may go hand
in hand
For he's both of these and still you'll find
He's a real good sport and to vanity blind.



FLORENCE BRINSON

Most Popular Girl

"Most Popular Girl," she has been named
And for this the voters cannot be blamed
For with her ready smile and generous heart
She'll make you love her from the start.



KATHERINE BRETT

Most Attractive Girl

Lovable and sweet, as attractive as can be
A girl to please you more, you'll hardly ever
see;
With her stylish dress and winning ways
She'll surely be happy all her days.



LUCILE SUDDATH

Most Athletic Girl

Fleet of foot, sure of hand
A girl with grit, a girl with sand
Clean in spirit in all she does
The kind of girl whom every one loves.



LESTER NEWTON

Most Athletic Boy

In every sport he takes a part
And plays the game with all his heart;
You'll find him clean, and fair and true
An athlete who is all true-blue.



ADDIE B. PARKER

Most Original

If it's something sad—she'll make it funny,
She can even joke about—not having money,
Her words, her actions, are all unique,
She's always smiling—tho' the skies are bleak.



HARRY WRENS

Wittiest

For ev'ry occasion he has a pun;
Wherever he is there's always fun
With his ready wit and winning smile
He's popular everywhere—all the while.



MAY QUEEN
JEWELL DURRENCE



A D S

The Forest City of the South

.....

Savannah, Georgia

Georgia's Port

THE ACCESSIBLE CITY OF THE SOUTHEAST

.....

W. T. O. C.

.....

Welcome to Our City

CONGRATULATIONS
—TO THE—
GRADUATING CLASS OF 1929-1930

BEST WISHES FOR THE
CONTINUED SUCCESS OF
THE SOUTH GEORGIA TEACHERS COLLEGE

J A K E F I N E
(INCORPORATED)

Successors to R. Simmons Co., Inc.

“The Store With a Million Friends”

“WHERE NATURE SMILES”

STATESBORO

::

GEORGIA

SAVANNAH'S
SMARTEST WOMEN SHOP

BERNARD'S

107 Broughton West

TEACHERS ALWAYS WELCOME

BAXTER'S BARBER SHOP

Where the Ladies and
promise is Children a
performed Specialty

HINTON BOOTH

ATTORNEY AT LAW

4 Courtland Street

Statesboro :: Georgia

E. C. OLIVER CO.

LADIES' AND GENTS'

READY-TO-WEAR

Store of Quality

Statesboro :: Georgia

STEPS IN SOPHISTICATION.

Freshman: "I don't know."

Sophomore: "I'm not prepared."

Junior: "I do not remember."

Senior: "I don't believe I can add
anything to what has been said."

Miss Newton: "Define the Middle
Ages."

H. Gooden: "They used to be thirty
to forty-five, but now they are fifty to
seventy."

DR. D. R. DEKLE

OPTOMETRIST

Bank of Statesboro Building

Statesboro :: Georgia

RAINES HARDWARE CO.

THE STORE OF

Service and Quality

Phone 6 Statesboro, Ga.

H. W. SMITH

JEWELER :: WATCHMAKER

"Gifts That Last"

For Any Occasion

20 S. Main St. Statesboro, Ga.

PRICES MAKE 2 PAIRS POSSIBLE
KINNEY SHOES

G. R. KINNEY CO.

Over 30 Family Stores

5 Big Factories

Shoes for the Entire Family

The NEW FORD

combines—

**SPEED : BEAUTY : COMFORT
RELIABILITY**

Must Be Driven to Be Appreciated



S. W. LEWIS

Authorized Dealer

STATESBORO

::

GEORGIA

Miss Trussell: "Who made the first
nitride?"

Harry Purcell: "Paul Revere."

* * * * *

Found on a freshman's registration
card: Question: Give your parents'
names.

Answer: Mamma and Papa.

To prove: That you love me.

Given: I love you.

Proof: All the world loves a lover.

Therefore: You love me.

* * * * *

Matrimony is like telephoning—one
doesn't always get the party he wants.

ALNUTT MUSIC CO.

118 W. Broughton St.

Savannah, Ga.

FINE

PIANOS

SHEET

MUSIC

Music Teachers' Supplies

VICTOR RECORDS

Mail Orders Filled Promptly

CECIL W. BRANNEN

HARDWARE

Statesboro

::

Georgia

Fred T. Lanier

Attorney at Law



FIRST NATIONAL BANK

BUILDING

STATESBORO

::

GEORGIA

STATESBORO PROVISION COMPANY

PURE CRYSTAL ICE

New Building : *New Machinery*

Courtland Street — Near Court House

PHONE 292

“EVERY DAY IS WINTER AT OUR PLANT”

Elmo: “What are shoes made of?”
Miss Trussell: “Hide.”
Elmo: “Hide! What for?”
Miss Trussell: “Hide! Hide! A cow’s
outside.”
Elmo: “Aw, let the old cow come on;
I ain’t afraid.”

Mr. Wells: “The evidence shows that
you threw a brick at this boy.”

Brown: “It shows more than that—it
shows I hit him.”

BLANK BOOK MAKERS

M. S.
and BYCK CO.
D. A.

**PRINTERS
STATIONERS
OFFICE OUTFITTERS**

Savannah, Georgia

LITHOGRAPHERS

NILE COFFEE SHOP

W. C. TUCKER, *Manager*

Something Good to Eat
We Have It : Home Cooking
COURT HOUSE SQUARE

Compliments of
**GEORGIA AND FLORIDA
RAILROAD**

“FAST DEPENDABLE SERVICE”

"Good Things to Eat Since 1893"

**SCHOOL BOOKS AND
SCHOOL SUPPLIES**
Bibles and Testaments

SEEDS FOR THE GARDEN
AND FIELDS

HAY and GRAIN

OLLIFF & SMITH

Statesboro :: Georgia

COMPLIMENTS

OF

A

FRIEND

La Fiece: "What are the holes in lumber for?"

Mr. Scott: "They are knot holes."

La Fiece: "Well, what are they then?"

Mr. Wells: "Vandy, haven't you any children?"

Vandy: "Yes, sir, I got triplets, and I named them Surely, Goodness and Mercy, so they'll follow me all the days of my life."

WE SPECIALIZE IN FITTING

ELASTIC HOSIERY

Abdominal Supporters and Trusses

Guaranteeing a Perfect Fit

**WACHTEL'S PHYSICIAN
SUPPLY CO.**

410 Bull Street Savannah, Ga.

**STATESBORO INSURANCE
AGENCY**

Established 1888

PHONE 79

STATESBORO :: GEORGIA

TRADE AT—

MARTIN'S

The Independent and Oldest

10c Store in

Statesboro

IF IT'S SPORTING GOODS
WE HAVE IT!

*Tennis, Baseball, Basket-ball, Football,
Volley-ball, Golf*

We can furnish every article needed for these great sports. We handle Goldsmith, A. J. Reach, Wright & Ditson and Wilson Complete Lines. Also Hardware, Johnson Motors, Boats and Marine Supplies.
Mail Orders Solicited

STUBBS HARDWARE CO.

121-123 Congress Street, W.
Phone 6205 Savannah, Ga.

Sam A. Northcutt

Wm. P. Northcutt

NORTHCUTT BROS.

**MASTER
DRY CLEANERS AND DYERS**

41 East Main Street

THE BOYS THAT APPRECIATE YOUR BUSINESS

PHONE 18

STATESBORO, GA.

Mr. Henderson: "What did you find out about the salivary glands?"

Horace: "Nothing at all, Mr. Henderson. They're so secretive."

Dekle: "Whenever I learn anything I store it away."

Jack: "Well, I hope you'll soon learn to play your saxophone."

THE REXALL STORE

Everything in Drugs

McPhail's Products

Kodaks

Cigars, Tobacco

Stationery, Magazines

**FRANKLIN DRUG
COMPANY**

"A Good Drug Store"

PHONE 2

Quality Groceries

Service, Satisfaction

A CLEAN STORE : A CLEAN STOCK

Prompt Service A Square Deal

We Thank You
for Your Patronage

ROGERS, INC.

Every lady is our friend,
And declares we're "on the mend."
When it comes to ladies' shoes,
Best materials we choose,
To work with honest will,
And good shoe-repairing skill.
Neither do we patrons rob,
By high charging for a job,
But leave it every time complete,
Satisfactory and neat.

J. MILLER SHOE FACTORY

STATESBORO : GEORGIA

THE COLLEGE OF SOUTHEAST GEORGIA

CO-EDUCATIONAL

1. The South Georgia Teachers College at Statesboro is a first class college in your own section of the state.
2. The buildings, equipment and library are valued at \$400,000.
3. The Faculty is composed of college teachers of long experience who hold graduate degrees.
4. The courses of study are similar to those of other like institutions in the South.
5. The State appropriates \$80,000 per year for maintenance.
6. The college is a member of the American Association of Teachers Colleges.

Write for a catalogue

The South Georgia Teachers College

FORMERLY GEORGIA NORMAL SCHOOL

STATESBORO, GEORGIA

WILLCOX
The Furniture Man
 FURNITURE AND HOME
 FURNISHING GOODS
 22 Years in Business
Come to See Us.
 Statesboro :: Georgia

OLLIFF FUNERAL HOME
 AMBULANCE
 LADY ASSISTANTS
 PHONES:
 Day 467 : Night 465
 Statesboro :: Georgia

**STATESBORO IMPLEMENT
 CO.**
 McCormick-Deering Farm
 Machines and Implements
 North Main St. Phone 357

MILTON BRADLEY CO.
 Atlanta, Georgia
 COMPLETE STOCK OF PRIMARY
 MATERIALS
 School Art Goods :: School Supplies
Catalogues Free

<p>Annie Ruth: "What is it, little boy?" Seaborn F.: "Mamma wants to know if you will cash a money order for her." A. R.: "How large is it? I could if it is not too large." Seaborn: "It's not big. It is about 4 inches by 3, very little and on blue paper."</p>	<p>How is your dear boy getting along in college? Oh! He's halfback on the football team and all the way back in his studies.</p>
--	--

Thos. A. Jones Co.
 SAVANNAH, GA.
Sole Agent
 SPALDING
 ATHLETIC EQUIPMENT
**KUPPENHEIMER
 GOOD CLOTHES**
 Stetson and Schober
 HATS
 Thos. A. Jones Co.
 18 East Broughton St.
 SAVANNAH GEORGIA

The South's Oldest Nursery
 Offers a Full Line of
 Nursery Stock.
 Free illustrated catalog sent
 on request
FRUITLAND NURSERIES
 Augusta, Ga.

L. J. SHUMAN & CO.
 GROCERIES
 FRESH AND CURED MEATS
 Fish and Oysters
 Statesboro :: Georgia

TO THE GRADUATE

A connection with a strong
progressive bank is of
first importance after
graduation



SEA ISLAND BANK

"THE BANK OF PERSONAL SERVICE"

STATESBORO, GEORGIA

**Statesboro Grocery
Company**

**Wholesale
Distributors**

—OF THE—

**FAMOUS GELLAND'S
MAYONNAISE and RELISH**

SALAD BOWL DRESSING

Is ALSO MIGHTY

GOOD.

THE QUALITY STORE, Inc.
DRY GOODS

**Novelties and Notions
Infants' Wear**

Statesboro :: Georgia

MR. LEON S. TOMLINSON

ATTORNEY AT LAW

**Second Floor National
Bank Building**

Statesboro :: Georgia

Miss Clay: "Why do you think
Chaucer dictated to a secretary?"

E. Rackley: "Why, just look at that
spelling."

Freshman: "Oh, look, the players are
all covered with mud. How do you
think they will get it off?"

Junior: "What's the scrub team for?"

Clerk: "Did you kill all the moths
with the moth balls I sold you?"

Wrens: "No, I sat up all night, but
I didn't hit a one!"

* * * * *

Freshman (to escort at football
game): "Who is the fellow 'Rah'
they're always cheering for?"

BULLOCH TIMES

—AND—

STATESBORO NEWS

Consolidated January 22, 1917

The Home Newspaper

A FRIEND OF THE SCHOOL

WRITE TO—

**J. P. Stevens
Engraving Co.**

ATLANTA, GA.

—for—

Samples and Prices

—of—

ENGRAVED INVITATIONS

AND CARDS

**DONALDSON-SMITH
CLOTHING CO.**

Outfitters for Men and Boys

7 S. Main Street

Statesboro :: Georgia

The Chamber of Commerce

STATESBORO, GEORGIA



*THESE TWO CIVIC CLUBS ARE ENTHUSIASTIC
PROMOTERS OF THE DEVELOPMENT
PROGRAM OF THE SOUTH GEOR-
GIA TEACHERS COLLEGE.*



*THEY STAND READY TO LEAD OR ASSIST IN
THE DEVELOPMENT OF OTHER WORTHY
COMMUNITY ENTERPRISES.*



The Woman's Club

STATESBORO, GEORGIA

**PARKE'S GOLD CAMEL
TEA BALLS**

INDIVIDUAL SERVICE

"Every Cup a Treat"

"The World's Finest"

Coffees : Teas : Spices
Canned Foods : Flavoring Extracts

L. H. PARKE COMPANY

PHILADELPHIA

PITTSBURGH

Mr. Singley: "I thought you said your room was spotless!"

Minnahan: "Yes, sir. Not a clean spot in it."

Vivian: "They say an apple a day will keep the doctor away."

Walton: "Why stop there? An onion a day will keep everybody away."

Remember Always—

**"YOUR WARMEST
FRIEND"**

THE CONE COAL COMPANY

Compliments of

HOTEL DeSOTO

SAVANNAH, GA.

Chas. G. Day, Vice-Pres. and
Manager

STUDIO W. T. O. C.

Compliments of

MR. E. B. D'ORONZIO

THACKSTON'S

*Statesboro's Leading
Cleaners*

Office Sea Island Bank Bldg.

Phone 10

Queen of West
Self-Rising Flour

Icy Point
Salmon



GOODS OF QUALITY
ALWAYS HIT THE MARK

WE SELL THIS KIND OF MERCHANDISE



Alfred Dorman Company

Wholesalers

STATESBORO and SYLVANIA

I N D E P E N D E N T H O M E - O W N E D

**COMPLIMENTS OF
THE UNITED FIVE AND
TEN CENT STORE**

Statesboro :: Georgia
5c to \$5.00

BOB-RITE BARBER SHOP

*We Cater to All Service with
a Smile*

39 E. MAIN STREET

HERFF-JONES CO.

INDIANAPOLIS, IND.

Manufacturers of
**Class Rings : Pins
Diplomas
Invitations and Cards**

—FOR—

Colleges and High Schools
Supplies

S. G. T. C.

CLASS RINGS AND PINS

H. S. CANFIELD,
Georgia Representative

"Harry ate something that poisoned him."

"Croquette?"

"Not yet; but he's very ill."

**BANNER
STATES PRINTING CO.**

"A Reliable Institution"

**Typewriters : Printing
Supplies**

27 W. Main St. Phone 421
Statesboro, Georgia

MRS. JOHN PAUL JONES

Florist

FLOWERS FOR ALL OCCASIONS

North College Street

Statesboro :: Georgia

COMPLIMENTS

COLUMBIA DRUG CO.

Savannah :: Georgia

W. C. AKINS & SON

Groceries and Hardware

Service is Our Motto

WE APPRECIATE YOUR TRADE

CONFIDENCE--

We feel that our past record and steady growth are evidence that we are worthy of your confidence. The policies of this bank are founded on honest, upright principles. Strict adherence to honest, sound methods has done much toward the growth of this institution.

THE FIRST NATIONAL BANK

STATESBORO

::

GEORGIA

"Who beat you up so badly?"

"I started through a revolving door and then changed my mind."

D R I N K

Coca-Cola

IN BOTTLES

That Pure Drink of Natural Flavors

NINE MILLION SOLD DAILY

It Had to Be Good to Get Where It Is

GLOBE SHOE COMPANY

SAVANNAH, GEORGIA

"The South's Finest Shoe Store"

Carrying a complete stock of those famous Health Shoes
for Teachers and Professional Women

**ENNA JETTICK : MATRIX
ARCH PRESERVER**

"NO ONE EVER REGRETTED BUYING GLOBE QUALITY"

"I didn't care to keep that schoolgirl complexion," said Hubert as he brushed off his
coat sleeve.

Buy From the Stores That Sell

Sweetly Yours

**SWEETLY YOURS CANDY
COMPANY**

Augusta : Georgia

PATRONIZE THE

COLLEGE STORE

**YOURS
"FINIS"**

5/5 30
11:25 o'clock

M. E. M.

If you are hungry eat at the
"Y" TEA ROOM
HOME COOKING
Mock Chicken Sandwiches, Special
Open Monday and Thursday
at 3:30



FORWARD

Today's perfection is beyond the one of past years-- behind the one of years to come.

With study and experiment, maintenance of proven processes, vigilance in sales, service and manufacture, we are seeking an Ideal---an Ideal that we move ahead with the progress of our industry.

Thirty years' experience in Annual printing and binding is our background. Our restless urge is ever FORWARD.

FOOTE & DAVIES COMPANY
Atlanta, Georgia



SPEC/COLL 44/1/.643/04/1930



