

Spring 2007

Spring 2007 AASU Enrollment Executive Summary

Armstrong State University

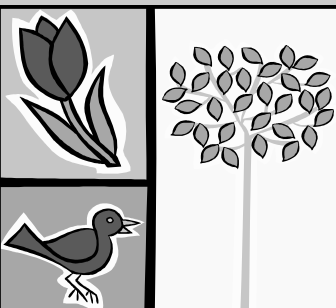
Follow this and additional works at: <https://digitalcommons.georgiasouthern.edu/armstrong-exec-sum>

Recommended Citation

Armstrong State University, "Spring 2007 AASU Enrollment Executive Summary" (2007). *Armstrong Enrollment Executive Summaries*.
4.
<https://digitalcommons.georgiasouthern.edu/armstrong-exec-sum/4>

This other is brought to you for free and open access by the Armstrong Office of Institutional Research at Digital Commons@Georgia Southern. It has been accepted for inclusion in Armstrong Enrollment Executive Summaries by an authorized administrator of Digital Commons@Georgia Southern. For more information, please contact digitalcommons@georgiasouthern.edu.

Spring 2007



ARMSTRONG ATLANTIC STATE UNIVERSITY

AASU Compass Points... Prelude to the Data Digest

	Undergraduate	Graduate	Overall Total
Enrollment, Spring 2007	5,734	610	6,344
Enrollment, Spring 2006	5,571	708	6,279
% Change in Enrollment	2.9%	-13.8%	1.0%
Percent Full-Time*	62.0%	27.7%	58.7%
Percent Part-Time*	38.0%	72.3%	41.3%
FTE, Spring 2007**			5,230
FTE, Spring 2006**			5,089
% Change in FTE			2.8%
Percent Female	68.2%	77.0%	69.1%
Percent Male	31.8%	23.0%	30.9%

* Full-time status is based upon 12 or more SCH for undergraduates and 9 or more SCH for graduates. Part-time is less than 12 for undergraduates and less than 9 for graduates.

**FTE is the Board of Regents definition of full-time equivalency.

Enrollment by...

Level of Classification

Freshmen/ Joint	1,640	25.9%
Sophomore	1,217	19.2%
Junior	1,168	18.4%
Senior	1,481	23.3%
Transient/ Other	228	3.6%
Graduate	610	9.6%

Ethnic Group

American Indian/ Alaskan Native	23	0.4%
Asian/ Pacific Island	193	3.0%
Black/Non-Hispanic	1,450	22.9%
Hispanic	231	3.6%
Multi-Racial	360	5.7%
White/Non-Hispanic	4,087	64.4%

Type of Residency

Georgia Residents	5,441	85.8%
Out-of-State	803	12.7%
Foreign Students	100	1.5%

New Student Classification

Joint Enrollment	9	1.3%
Beginning Freshmen	215	30.9%
Transfer Freshman	93	13.4%
Transfer Sophomore	78	11.2%
Transfer Junior	86	12.4%
Transfer Senior	23	3.3%
Transient/Other	85	12.2%
Graduate	107	15.4%
Total	696	

Average Age

Undergraduate	26.1
Graduate	34.7

Learning Support Courses

(Unduplicated Headcount)

Due to System Requirement	146
Due to Institution Requirement	50
Due to Voluntary Requirement	45
Total	241