

Reflector

1928

Georgia Southern University

Follow this and additional works at: <https://digitalcommons.georgiasouthern.edu/reflector-yearbook>



Part of the [Higher Education Commons](#)

Recommended Citation

Georgia Southern University, "Reflector" (1928). *Reflector Yearbook*. 3.
<https://digitalcommons.georgiasouthern.edu/reflector-yearbook/3>

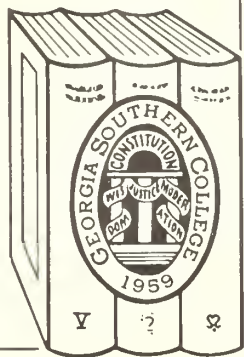
This book is brought to you for free and open access by the Student Media at Digital Commons@Georgia Southern. It has been accepted for inclusion in Reflector Yearbook by an authorized administrator of Digital Commons@Georgia Southern. For more information, please contact digitalcommons@georgiasouthern.edu.

Reflector



1928

GEORGIA
SOUTHERN COLLEGE
LIBRARY



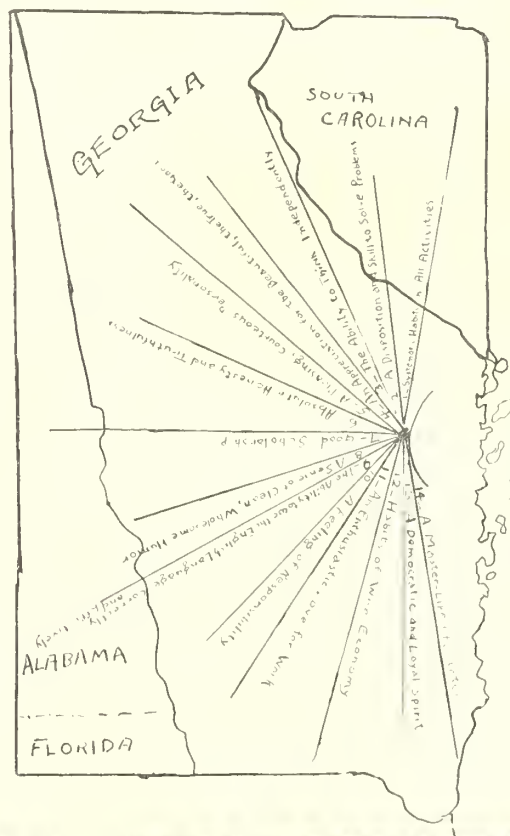
Georgia Southern College
Zach S. Henderson Library

Georgia Southern University
Zach S. Henderson Library



The Reflector

Published by the students of
Georgia Normal School
STATESBORO, GEORGIA 1928.





Dedication

Because you are a zealous worker for the upbuilding of this institution, because you will, by force of your personality, influence others toward worthy achievements in life, and because you are a true, personal friend, We, the Sophomore Class of 1928, dedicate this, the third volume of the REFLECTOR.



BURRUS MATTHEWS, A.B., M.A.

2768



Foreword

This book has one primary object in view,—that of resurrecting, reclaiming, and restoring the manifold experiences of campus life at Georgia Normal School. If a perusal of these pages dispels the shrouds and mists of forgetfulness, if the reader is transported through the chasm of time to live again on Georgia Normal Campus, then the efforts of the compilers of this volume will not be in vain.



Contents

BOOK I

INTRODUCTION

BOOK II

CLASSES

COLLEGE

HIGH SCHOOL

BOOK III

ACTIVITIES

BOOK IV

FEATURES



Digitized by the Internet Archive
in 2014

<https://archive.org/details/reflector1928na>



- INTRODUCTION

BILL THOMAS



Administration Building



East Dormitory



MR. GUY H. WELLS, A.B., M.A.
President



DAVID NYE BARRON, B.S.A., M.A.
Mississippi A. and M. College; George Pea-
body College for Teachers.
Agriculture



LUEA E. BELL
Dean of Women



LENA BELLE BRANNEN, A.B., B.M.
Wesleyan College
Languages



ELIZABETH BRUCE, B.S.H.E.
State Normal; University of Georgia.
Home Economics



MABEL BRUNSON
Bookkeeper



CARRIE LAW CLAY, B.S., M.A.
Georgia State Teachers College; George Pea-
body College for Teachers.
English



EVELYN COLEMAN
Brenau Conservatory; Atlanta Conservatory;
Wesleyan Conservatory.
Music

MRS. MARY E. FULLILOVE

Dietitian

ZACH S. HENDERSON, B.S.

Piedmont College; University of Chicago;
Columbia University.

Dean

MARY B. HILL, B.S.

Georgia State College for Women; Columbia
University.

Critic Teacher

MRS. JESSE OUTLAND JOHNSTON

Brenau School of Oratory.

Expression

BURRUS MATTHEWS, A.B., M.A.

Union University; George Peabody College
for Teachers.

Education

JEWEL JORDAN MATTHEWS

Piedmont College; Special Student of Geneva
Albright and Glenny Mosley.

Industrial Arts

FAMILY KATHERINE PERKINSON, B.S.

George Peabody College for Teachers.

Primary Supervisor.





VIOLA PERRY, B.S.

George Peabody College for Teachers.

Education and Mathematics

JOHN M. PHAGAN, B.S.

State Normal College, Florence, Alabama.

*Mathematics and Director of
Extension Department*

ALVIN A. SINGLEY, A.B., A.M.

Newberry College; University of South
Carolina.

History

MRS. ALVIN A. SINGLEY

University of South Carolina; Columbia
School of Music.

Secretary

FRANCES STUBBS, A.B.

Georgia State College for Women.

Librarian and Romance Languages

MALVINA TRUSSELL, B.S.

Georgia State College for Women.

Science

BERNICE JEANNETTE WHITE, A.B.

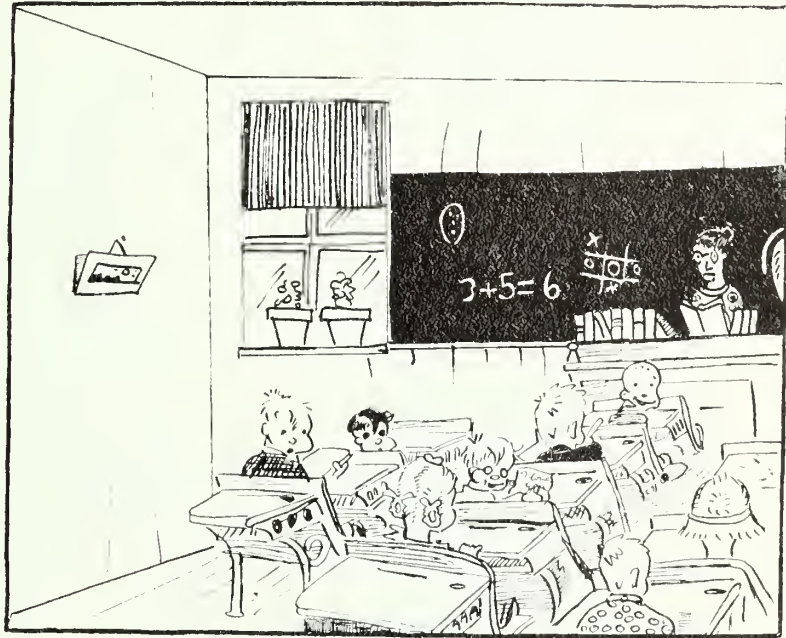
Meredith College, Raleigh, N. C.

Home Economics and Art

HUGH A. WOODLE, B.S.

Clemson College.

Agriculture and Coach



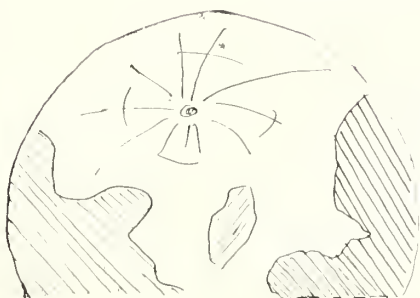
CLASSES-

BILL THOMAS

JUNIOR DEGREE



"I'm sitting on
top of the
world"



E. Green



LUNEIL BELL

Waynesboro, Georgia

"TING-A-LING"

*"She is loyal, kind, and true—
Always knows the thing to do;
If you've come within her favoring
You'll find a friend unwavering."*



ADA LOU ROWE

Claxton, Georgia

"BUSTER"

*"She is not a 'Comedy of Errors',
Nor a 'Midsummer Night's Dream';
But take it 'As You Like It',
She is just what she seems."*



MARION SHUPTRINE

Statesboro, Georgia

"RED"

*"Life to her is a pleasure;
Duty, of course, must appear;
Joy must chase away sorrow,
And love bring up the rear."*



DOROTHY THOMAS

Jacksonville, Florida

"DOT"

*"When she will, she will,
And you can depend on it;
When she won't, she won't,
And there's an end on it."*

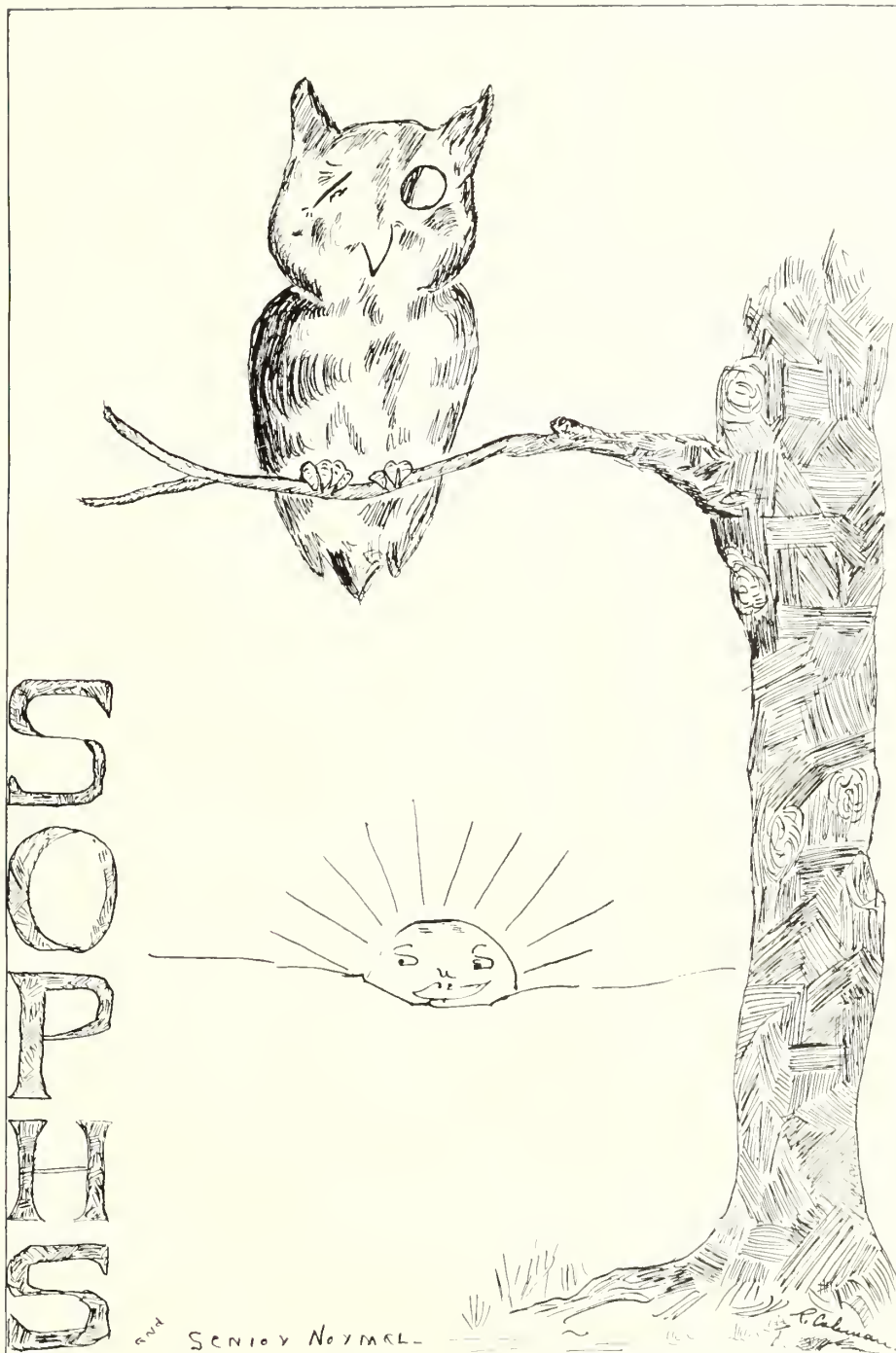


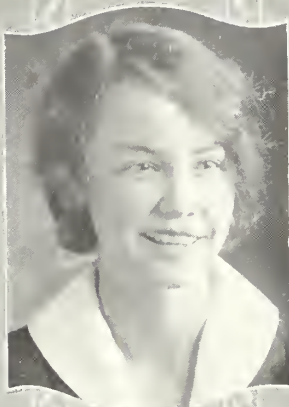
WILLIE BELLE WATERS

Statesboro, Georgia

"WILLIE"

*"Not too serious, not too gay,
But a rare good fellow when it comes to
play."*





GRACE BAILEY

Summertown, Georgia

"GRACEY"

"If music be the food of Love, play on."

Entered '26. Stephens Literary Society; Vice-President, Second Term, '27; Pianist, Second Term, '28; McDowell Music Club; Y. W. C. A. Cabinet; Basket-ball, '26-'28; Glee Club, '26-'28.



LEXIE MAE BLAND

Statesboro, Georgia

"LECK"

*"As each day comes, we love her more;
And time goes on forever."*

Entered '26. Stephens Literary Society; Day Student.



EVEI YN BLOUNT

Vidalia, Georgia

*"Her very countenance seems to say,
I am happy through the live long day."*

Entered '26. Stephens Literary Society; Glee Club, '26-'27; H. O. Z. Club; President Y. W. C. A.; Assistant Librarian.

BURMAN BOWEN

Register, Georgia

"RED GRANGE"

*His grouches are few, his smiles are many.
He doesn't air his troubles 'cause he hasn't
any."*

Entered '26. Stephens Literary Society;
Tiager Club, '27; Glee Club, '27; Basket-
ball, '27; Tennis Club, '28.



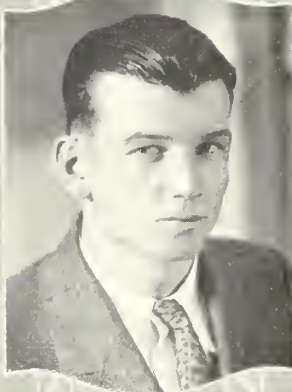
VERNON CAIL

Statesboro, Georgia

"PETI"

*"Laugh and the world laughs with you
Cry and I run away."*

Entered '27. Oglethorpe Literary Society.
'27, '28; Football, '27; Baseball, '27, '28;
Basket-ball, '28; Block N Club.



RUTH COLEMAN

Graymont, Georgia

"RUTHY"

*"Happy and from care I'm free,
Why aren't they all content like me?"*

Entered '26. Stephens Literary Society,
Secretary, '27; Whistler Art Club, '27, '28;
Richards Home Economics Club, '26-'28;
Glee Club, '26-'28; Art Editor REFLECTOR,
'28.





MELBA DEKLE

Statesboro, Georgia

"MEL"

"A jolly girl whom we all love well."

Entered '26. Stephens Literary Society,
'26-'28; Day Student.



FRANK DE LOACHE

Register, Georgia

"One who walketh uprightly, worketh righteously, and speaketh the truth in his heart."

Entered '26. Stephens Literary Society,
'26-'28; Chaplain, Winter Term, '27, Fall Term, '27; Tiger Club, '27; Editor of Scrapbag; Glee Club, '27, '28; Basket-ball, '27; Photographic Editor REFLECTOR, '28.



MAURINE DONALDSON

Statesboro, Georgia

"SKEET"

"With wit and wisdom I will rule the world."

Entered '26. Stephens Literary Society,
'26-'28; Day Student.

GLADYS DUBOSE

Ludowici, Georgia

"GLADYS"

*"She's a jolly, peppy dame,
Always laughing, always the same."*

Entered '27; Stephens Literary Society;
Glee Club; Whistler Art Club, '28; Tennis
Club, '28; H. O. Z., '27.



HAZEL DUNLAP

McCormick, South Carolina

"DUNLAPPER"

*"Loyal hearted, strong of mind,
A finer girl you'll never find."*

Entered '26. Oglethorpe Literary Society.
'26-'28, Vice-President, Fall, '27; Student
Council; Secretary of Sophomore Class;
Whistler Art Club; H. E. K. Club; Treasurer
Tennis Club; Glee Club, '26-'28; President
Dramatic Club, Fall Term, '27; Y. W. C. A.
Cabinet; Editor-in-Chief of REFLECTOR.



INEZ EDENFIELD

Stillmore, Georgia

"NEZ BABY"

"Hang sorrow, care will kill a cat."

Entered '26. Stephens Literary Society.
'26-'28; Whistler Art Club, '26-'28; H. E.
K. Club; Y. W. C. A.





DOY GAY

Portal, Georgia

*He bore a mind that envy could but call
fair."*

Entered '26. President of Stephens Literary Society, Winter, '28; Glee Club, '26-'28; Football, '26, '27; Tiger Club, '26; Track, '26-'28; Student Council, '27, '28; President of Sophomore Class; Block N Club.



LOIS HARRISON

Kite, Georgia

*"She has a smile that makes life worth
while."*

Entered '27 from G. S. C. W. Stephens Literary Society; N. P. Club, '27; Tennis Club, '27, '28; Whistler Art Club, '27, '28.



ELIZABETH HODGES

Waycross, Georgia

"LIB"

"Her own thoughts are her companions."

Entered '27 from Columbia College. Stephens Literary Society; Whistler Art Club, '27, '28; H. E. K. Club, '27, '28; Glee Club, '27, '28; Tennis Club, '27, '28; Y. W. C. A.; Club Editor of REFLECTOR.

LOIS HUTCHINSON

Adrian, Georgia

"Once your friend, always your friend."

Entered '26. Oglethorpe Literary Society;
Basket-ball, '26-'28; Y. W. C. A. Cabinet;
Assistant Librarian.



BOTHWEI L. JOHNSON

Summit, Georgia

"CADET"

*"Fie upon thee, Captain Care,
And all thy bloody band."*

Entered '26. President of Stephens Lit-
erary Society, '27; Baseball, '27; Football,
'27; Tennis Club, '27; Debate, '27; Vice-
President Sophomore Class; Vice-President
Student Council; Business Manager REFLEC-
TOR.



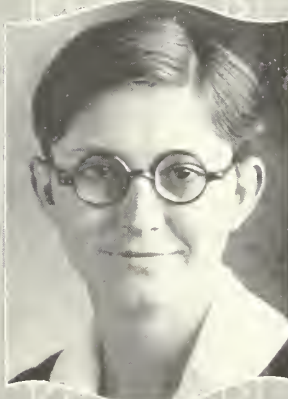
JESSIE JOHNSON

Garfield, Georgia

"JAKE"

*"It does not pay to worry;
The world looks better from behind a
smile."*

Entered '27 from G. S. W. C. Stephens
Literary Society; Basket-ball; Glee Club, '27,
'28; Hornet.





SARA LOIS JOHNSON

Statesboro, Georgia

"COOCH"

*"In her heart, the dew of youth;
On her lips, the smile of truth."*

Entered '27 from Andrew College. Stephens Literary Society; Day Student.

RONENA JOINER

Tennille, Georgia

"NENA"

*"Happy and mischievous, lovable and kind,
A truer friend one can not find."*

Entered '26. Stephens Literary Society; Glee Club, '26-'28; Basket-ball, '26-'28; Tennis Club, '27, '28.

EVIA DELL KEA

Modoc, Georgia

"EV-E DELLE"

*"To see her is to love her,
And love but her forever,
For nature made her what she is
And never made another."*

Entered '26. Stephens Literary Society; Pianist, Winter Term, '27; Whistler Art Club, '26-'28; Vice-President, '28; Dramatic Club, '28; Tennis Club; H. E. K. Club; Glee Club; Music Club, '26-'28.

CELESTIAL KNOTTS

Cope, South Carolina

"LES"

*"No sweeter girl, no better sport,
Upon this earth could God import."*

Entered '26. Oglethorpe Literary Society.
'26-'28; President Whistler Art Club. '26.
Secretary Whistler Art Club. '28; Dramatic
Club. '27, '28; Secretary Tennis Club. '27.
'28; H. E. K. Club. '27; Glee Club. '27.
'28; Basket-ball. '26-'28; Y. W. C. A. Cab-
inet; Student Council; S. C. Club.



ZULIEME LANE

Statesboro, Georgia

"Determination is the keynote to success."

Entered '27. Tennis Club.



BLANCHE LANIER

Pembroke, Georgia

"The quiet mind is richer than a crown."

Entered '27. Oglethorpe Literary Society.
Y. W. C. A.





CAROLYN LEE

Statesboro, Georgia

"Ambition rules my mind and love, my heart."

Entered '26. Stephens Literary Society. '26-'28; Richards Home Economics Club. '26-'28; H. O. Z. Club. '26, '27; Whistler Art Club. '26-'28; Glee Club. '26-'28.

EARLE LEE

Leefield, Georgia

"BABY"

"Quiet in appearance with motives unknown."

Entered '26. Oglethorpe Literary Society; Whistler Art Club. '26-'28; McDowell Music Club. '26-'28; H. O. Z. Club.

DORRIS LINDSEY

Statesboro, Georgia

*"True hearted, whole hearted,
Faithful and loyal."*

Entered '26. Oglethorpe Literary Society. President, Spring Term. Secretary, Winter Term; Whistler Art Club; Basket-ball. '26-'28; Treasurer Freshman Class; President Tennis Club; Vice-President Y. W. C. A.; Vice-President H. E. K. Club; Vice-President Dormitory Council; Literary Editor REFLECTOR.

EARLIE LOVE

Wesley, Georgia

*Honesty, hard work, and fair play;
These shall be the guides of my life in all
its phases."*

Entered '26. Oglethorpe Literary Society;
Football; Baseball; Track; Treasurer Sopho-
more Class. '27; Secretary Oglethorpe Society.
'27.



RUFUS MARTIN

Millen, Georgia

"PECK"

*Let the old world wiggle, I've got it by the
tail."*

Entered '26. Stephens Literary Society;
Piager Club. '26; Football, '26-'28; Base-
ball, '27; Chaplain Stephens Literary Soci-
ety; Glee Club; Track; President Freshman
Class; Class Poet.



FRANCES MILNER

Cleola, Georgia

"FRANCE"

*"Her smiles are bright and gay;
She has a merry, winning way."*

Entered '26. Oglethorpe Literary Society.
'26-'28; Whistler Art Club. '26-'28; Rich-
ards Home Economics Club. '26-'28.





LOUISE NEAL

Wrightsville, Georgia

*"Whatever there be of sorrow,
I'll put it off until tomorrow."*

Entered '26. Stephens Literary Society, '26-'28; Whistler Art Club, '26-'28; Glee Club, '26-'28; H. O. Z. Club, '27; Tennis Club, '27, '28; N. B. Club, '27, '28; Y. W. C. A.

ROXIE NEVIL

Register, Georgia

"ROCK"

"As sweet as she is large."

Entered '27. Oglethorpe Literary Society; Tennis Club; Day Student.

MARGARET NEWTON

Millen, Georgia

"MAGGIE"

*"Not too sober, not too gay,
Just a real good pal in every way."*

Entered '26. Oglethorpe Literary Society, '26-'28; Richards Home Economics Club, '26-'28; Whistler Art Club, '26, '27; H. O. Z. Club, '27; Basket-ball, Captain, '26-'28; Y. W. C. A.; Glee Club, '27.

CLARA NEWTON

Millen, Georgia

"Then to be good is to be happy."

Entered '27. Stephens Literary Society,
'27; Whistler Art Club, '27, '28.



WALDO PAFFORD

Douglas, Georgia

"ABIE"

*"Full of fun, full of pep,
In basket-ball he won his rep."*

Entered '26. Stephens Literary Society,
'26-'28; Basket-ball, '26-'28; Baseball, '27,
'28; Dramatic Club; Tiager Club, '27; Glee
Club, '27; Debate, '27.



IRENE POWELL

Wrightsville, Georgia

"RENA"

*"True to her work, her word, and her
friends."*

Entered '26. Stephens Literary Society,
'26-'28; Whistler Art Club, '26-'28; Tennis
Club, '27, '28.





WILLIAM HENRY PRICE

Harrison, Georgia

"SHOELESS JOE"

*"Never take life too seriously;
You won't get out alive, anyway."*

Entered '26. Stephens Literary Society, '26-'28; Basket-ball, '26-'28; Baseball, '27; Tiger Club, '26; Student Council, '26.



JOE PRITCHARD

Graymont, Georgia

*"There is no royal road to highest fame;
The man has toiled who wears a glorious
name."*

Entered '26. Stephens Literary Society, '26-'28; Song Leader, '27; President Glee Club, '27; Football, '27; Track, '27, '28.



JOHNNIE CLYDE RINER

Meeks, Georgia

*"With mirth and laughter let old wrinkles
come."*

Entered '26. Oglethorpe Literary Society, '26-'28; Richards Home Economics Club, '27, '28; Dramatic Club, '26-'28; Whistler Art Club, '26-'28; H. O. Z. Club, '26, '27.

THEO ROBSON

Townsend, Georgia

"BOUNCIE"

"Love is better than tame."

Entered '26. Stephens Literary Society.
'26-'28; Richards Home Economics Club.
'26-'28; Y. W. C. A., '26-'28; H. E. K.
Club, '27.



C. G. ROUNTREE

Egypt, Georgia

"BURHEAD"

"Love all, trust few, do wrong to none."

Entered '26. Stephens Literary Society.
'26-'28; Tiager Club, '27; Glee Club, '27,
'28; Baseball, '27, '28; Basket-ball, '27,
'28; Student Council, '27, '28.



LOUISE THOMPSON

Graymont, Georgia

*"No honor she seeks, no work she declines,
And convinced she is needed, no hardship
resigns."*

Entered '26. Stephens Literary Society.
'26-'28; Richards Home Economics Club,
'26-'28; Whistler Art Club, '27; H. E. K.
Club, '27, '28.



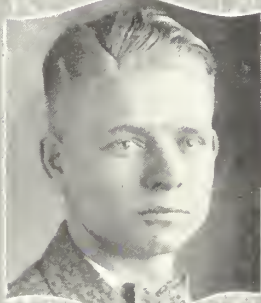


ESTHER WARNOCK

Statesboro, Georgia

"Keep digging."

Entered '27. Day Student.



LOY WATERS

Summit, Georgia

"Be a friend to all, but love only one."

Entered '26. Stephens Literary Society, '26-'28; Football, '26, '27; Baseball, '27; Tiger Club; Glee Club, '26-'28, President, '26; Vice-President Freshman Class; President Stephens Literary Society, Fall Term, '26.



TRUE WATSON

Metter, Georgia

"UNCLE TRUE"

*"We've known her and we've loved her;
We've tried her and found her true."*

Entered '26. Oglethorpe Literary Society, '26-'28, Vice-President, Winter Term, '27; Glee Club, '26-'28; Richards Home Economics Club; Y. W. C. A. Cabinet; Captain Basket-ball, '26-'28; Cheer Leader N. B. Club, '28.



EUNICE WILSON

Pulaski, Georgia

*"She is neat, jolly and skilled in a peculiar art;
Yes, she's a bird at breaking hearts."*

Entered '26. Stephens Literary Society, Secretary and Treasurer, '27; Whistler Art Club; President, '27; Dramatic Club, President, '27; Tennis Club, '27; H. E. K. Club, '27; Y. W. C. A.; Glee Club.

*At last the time has come, dear friends,
When we must say, "Adieu."
Then each must meet life's task alone
No matter what course we pursue.*

*We bestow on you our blessing,
Old banner of blue and white,
We'll long for you on the morrow
As you wave in glory aright.*

*Though we're apart, we'll not forget
The friends whom here we knew;
And always remember them fondly,
As Love would have us do.*

*As the tide of time rolls on and on
The ears of the world will hear
The fourteen points of G. N. S.
Ring sublime as they fill the air.*

*As we depart from these old walls
Adorned with ivy, and gray,
May Service be our motto;
For the guidance of God we pray.*

—RUFUS MARTIN.

Sophomore Class History



LANG! Blang! went the bell. It was 8:30 A. M. and one of the most beautiful days in the history of our class. We all, as Freshmen will do, made a rush for the dean's office; but once there, everything seemed to stop. One could very easily tell that we were Freshmen.

Time passed on and we found ourselves over what we classed as our hardest days, the days of forming acquaintances and getting started into college life. We soon grew interested in our activities and, for a while, everything ran smoothly. Then came exams and many a worried little friend was heard to ask, "How did you come out?" or "Did you pass?" These questions seemed to be answered in the affirmative as none of our members left us. After having spent a very happy Christmas, all returned determined to be better students and to do better work. Just after the beginning of the third term, while we were enjoying the spring holidays, there came news that our beloved dean, Mr. Anderson, had died. We felt the great loss of this friend and educator. He lived only to serve; he was honest, earnest, enthusiastic, cheerful, and, above all, friendly. Shortly after this, we finished our Freshman year and were on our way home for the summer vacation.

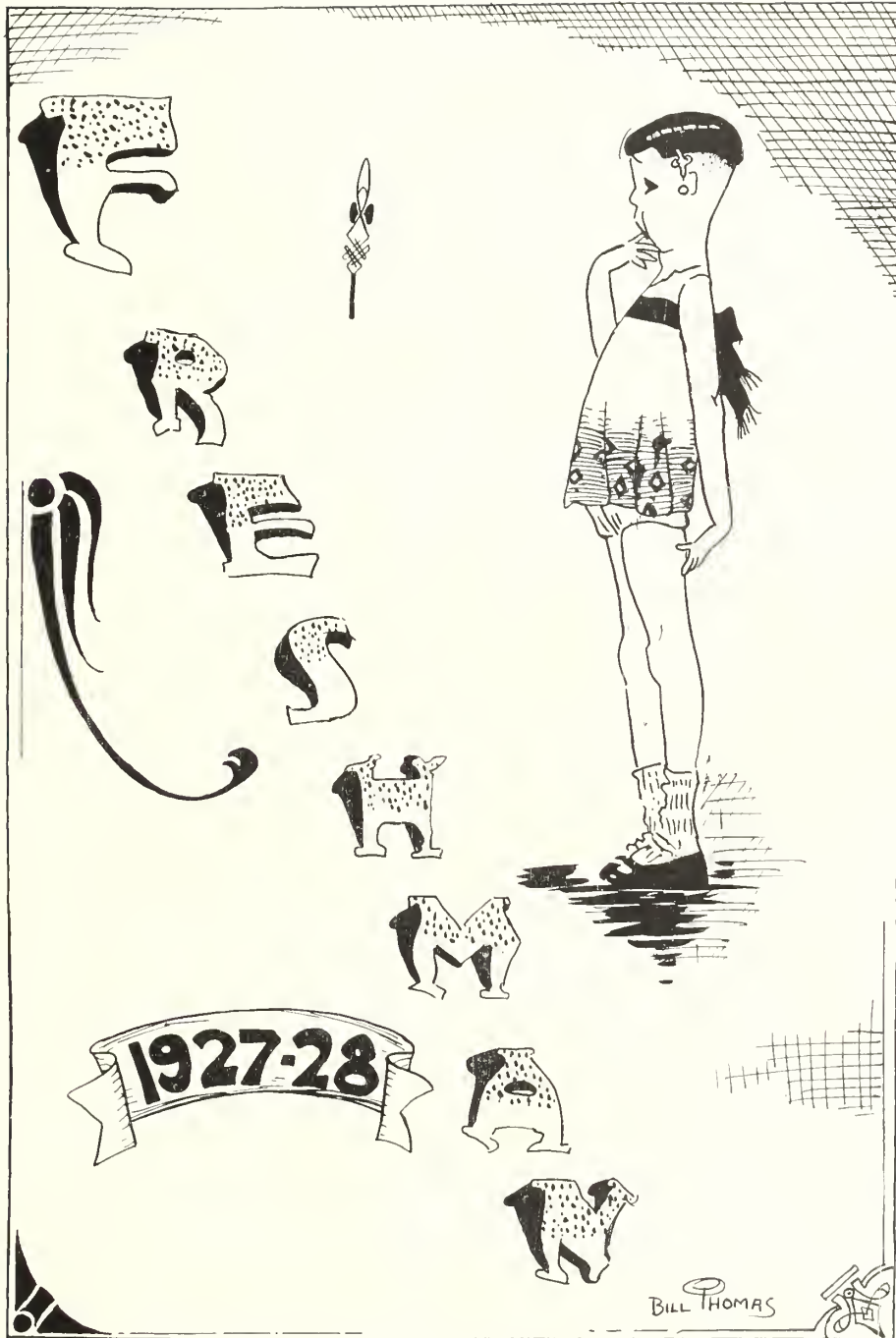
We entered our Sophomore year with light hearts and high hopes. Although some had chosen paths that led them astray, we found new faces to take their places. We were greeted by a new face in chapel that first day of our Sophomore year. Dean Henderson seemed so young that some mistook him for a student. It took only a short time, however, for him to win a place in each of our hearts. He has inspired us to work harder and has taught us what this life really is. This year, it seems, has been one of changes and reformatations. We as a class have become dignified and go around with high heads. Several new teachers have come in to fill the places of some who have left our midst seeking higher degrees and better educations.

After two years of hard study we have, at last, reached our goal. We have borne the hardships and shared the pleasures of college life for the last time as classmates. This brings to us a feeling of regret, relieved, however, by a desire to become active in the world's work.

We hope that in our future careers we will be able to live up to the "Ideals of G. N. S."

C. G. ROUNTREE.

Historian.





BERNICE REE ANDERSON

Register, Georgia

GEORGE ALDRED

Graymont, Georgia

TINY LEE ALDERMAN

Statesboro, Georgia

DARTHA BONNETT

Portal, Georgia

MYRTLE BOWEN

Metter, Georgia

LINCOLN BOYKIN

Sylvania, Georgia

FRANCES BRETT

Statesboro, Georgia

PARKER BRYANT

Summit, Georgia

HOWARD CANNADY

Pembroke, Georgia

ELIZABETH CARTER

Cope, South Carolina

MAGGIE ELIZABETH CAUGHLIN

Sardis, Georgia

BENNIE CLARK

Millen, Georgia

BILL COLEMAN

Devereux, Georgia

LA FIECE COLLINS

Graymont, Georgia

MAE CUMMING

Statesboro, Georgia

VERDIE DRAKE

Adrian, Georgia





ELIZABETH EDENFIELD

Vidalia, Georgia

DAISY FIELDS

Garfield, Georgia

ANSEL FRANKLIN

Kathwood, South Carolina

GENEVA FUTCH

Lanier, Georgia

LAVERT GAY

Millen, Georgia

DEKLE GOFF

Statesboro, Georgia

OLIVE GOODEN

Willie, Georgia

RUTH GRAHL

Ashburn, Georgia

DELL HAGIN
Statesboro, Georgia

KATHLEEN HARMON
Swainsboro, Georgia

SARA HARTMAN
Ogeechee, Georgia

RALPH HENDERSON
Gillsville, Georgia

CARRIE D. HUTCHINSON
Adrian, Georgia

JOSIE HUTCHINSON
Adrian, Georgia

GEORGIA JOHNSON
Garfield, Georgia

LAMAR JOHNSON
Garfield, Georgia





MARY LESSIE JOHNSON

Garfield, Georgia

PAULINE JOINER

Summertown, Georgia

ERNEST KENNEDY

Manassas, Georgia

MARGARET KENNEDY

Statesboro, Georgia

LUCY KINNEY

Temple, Georgia

FRANCIS MATHIS

Oliver, Georgia

GEORGE MATHIS

Oliver, Georgia

A. G. MIDDLETON

Townsend, Georgia

ANNIE MILLER
Rocky Ford, Georgia

SAM NEVIL
Register, Georgia

L. W. NEW
Harrison, Georgia

DORIS NEWTON
Millen, Georgia

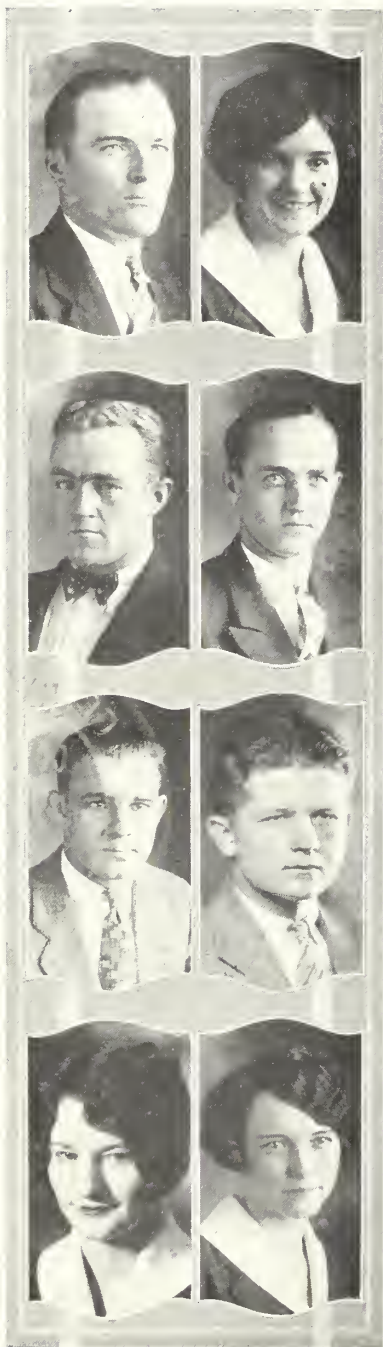
BLANCHE PARKER
Ogeechee, Georgia

CECILE RHOAD
Pembroke, Georgia

CLAUDIA RINER
Wrightsville, Georgia

JULIAN ROBERTS
Hiltonia, Georgia





TALMADGE ROBERTS

Hiltonia, Georgia

LILLIAN ROCKER

Guyton, Georgia

ALLEN BRYAN ROUNTREE

Summit, Georgia

GORDON ROUNTREE

Dublin, Georgia

DELMAS RUSHING

Register, Georgia

FRANK SCREWS

Glenville, Georgia

EVELYN SHUPTRINE

Statesboro, Georgia

ELOISE SMITH

Statesboro, Georgia

JANICE SMITH
Statesboro, Georgia

MILDRED SMITH
Bellville, Georgia

SARAH SMITH
Statesboro, Georgia

ILA MAE STRICKLAND
Statesboro, Georgia

TRAWICK STUBBS
Savannah, Georgia

TRANNIE TRAPNELL
Metter, Georgia

EDNA TRAPP
Reynolds, Georgia

B. F. WAMMOCK
Adrian, Georgia





ALENE WATERS

Glennville, Georgia

JEWEL WATSON

Statesboro, Georgia

EARL WILLIAMS

Rocky Ford, Georgia

EDNA PEARL WILLIAMS

Register, Georgia

KATHERINE WILLIAMS

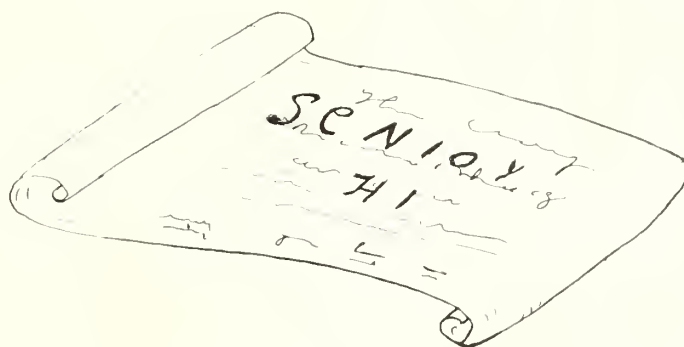
Statesboro, Georgia

S. J. WILLIAMS

Rocky Ford, Georgia

GLADYS WOMMACK

Alamo, Georgia



A. Coleman



HOLLIE BAZEMORE

Sylvania, Georgia

Nickname: "Cotton-Head."

Motto: Always paddle your own canoe.

EMMA BIRD

Metter, Georgia

Nickname: "Sammie."

Motto: Always Emma.

WELDON BLACK

Sylvania, Georgia

Nickname: "Coffee."

Motto: Smile and the world smiles with you; sigh and you sigh alone.

BOYD BOSWELL

Garfield, Georgia

Nickname: "Chaudet."

Motto: Live and learn, die and forget.

EDITH CARTER

Scott, Georgia

Nickname: "Red."

Motto: Row, don't drift.

HAROLD COLEMAN

Cobbtown, Georgia

Motto: I'll find a way or make one

ORA COWART

Cobbtown, Georgia

Nickname: "Sis."

Motto: Keep on keeping on.

LUCILE SALOMIE DASHER

Marlow, Georgia

Nickname: "Sindy."

Motto: To be rather than to seem.

CLYDE DAVIS

Millen, Georgia

Nickname: "Bulb Buster."

Motto: Timid is he who believeth himself
not equal to another human being.

RALPH DIXON

Sylvania, Georgia

Nickname: "Pete."

Motto: It ain't as long as it has been.





ELSIE MAE GOODMAN

Orangeburg, South Carolina

Nickname: "Kink."

Motto: Man or money.

JEANETTE GRACE

Uvalda, Georgia

Nickname: "Grace."

Motto: Sweet in manner, brave in the doing.

FRED HENDRICKS

Metter, Georgia

Nickname: "Cornbread."

Motto: To the stars through difficulty.

FANNIE BELLE HOLTON

Soperton, Georgia

Nickname: "Fannie Belle."

Motto: Hang worry; life is too short for it.

FRANK HOUSER

Scott, Georgia

Nickname: "Bud Houser."

Motto: An empty wagon makes the most noise.

MARILEE JONES

Metter, Georgia

Nickname: "Sis."

Motto: Smile and the world smiles with you; cry and you cry alone.

DORA KING

Oliver, Georgia

Nickname: "Girlie."

Motto: Do unto others as you would have them do unto you.

VIRGINIA FAY LEWIS

Broxton, Georgia

Nickname: "Ginice."

Motto: The reason firm, the temperate will.

ROBERT MOBLEY

Uvalda, Georgia

Nickname: "Two Bits."

Motto: Not good looking, but good natured.

EVA MORGAN

Metter, Georgia

Nickname: "Tinker."

Motto: Why worry? When there's a will, there's a way.





CALERIA MOSS

Carnesville, Georgia

Nickname: "Clem."

Motto: Be a self-starter, not a crank.

GARNETT ODOM

JAMES PRICE

Oak Park, Georgia

Nickname: "Wild Boy."

Motto: Observe and grow wise.

RUBYE STROUD

Egypt, Georgia

Nickname: "Rube."

Motto: Appearance quiet, motives unknown.

D. F. WARNOCK

Tarrytown, Georgia

Nickname: "Duck."

Motto: Love all, trust none.

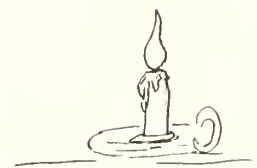
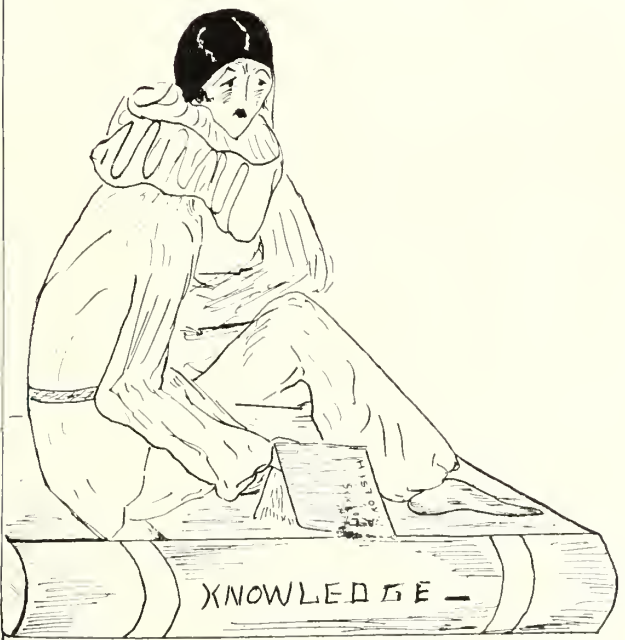
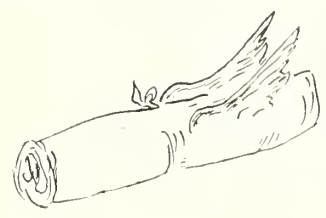
NANCY JANE CROW

Wrightsville, Georgia

Nickname: "Kitty."

Motto: Every cloud has a silver lining, so smile.

JUNIOR III.



F. Colman



OFFICERS

CHARLIE BUIE *President*
 ATWOOD HENDRICKS *Secretary*
 BILL THOMAS *Treasurer*

MEMBERS

ALDERMAN, HARMON Statesboro, Georgia	JONES, FREDERICK Millen, Georgia
AYCOCK, ILA Rocky Ford, Georgia	LEGGETT, DILLON Uvalda, Georgia
AYCOCK, KATE Rocky Ford, Georgia	LIMERICK, LAMAR Hiltonia, Georgia
BAKER, SAM Norman Park, Georgia	PHILLIPS, RALPH Covena, Georgia
BUIE, CHARLIE Pulaski, Georgia	STEVENS, TOM CLAY Dorchester, Georgia
EDENFIELD, THOMAS Oliver, Georgia	TAYLOR, HELEN Savannah, Georgia
FIELDS, BLANCHE Garfield, Georgia	THOMAS, WILLIAM H. Dublin, Georgia
HENDRICKS, ATWOOD Pulaski, Georgia	WHITEHEAD, JEWELL Summertown, Georgia



ACTIVITIES—

BILL THOMAS

Reflector Staff

HAZEL DUNLAP, *Editor*

ELIZABETH EDENFIELD

Asst. Editor

DORRIS LINDSEY

Literary Editor

BILL COLEMAN

Asst. Club Ed.

TRANNIE TRAPNELL

Asst. Athletic Ed.

EARLIE LOVL

Feature Editor

ELSIE MAE GOODMAN

Asst. Photo. Ed.

BILL THOMAS

Asst. Art Editor

TRAWICK STUBBS

Asst. Bus. Mgr.

FRANK DELOACH

Photographic Ed.

BOTHWELL JOHNSON

Business Manager

S. J. WILLIAMS

Asst. Lit. Ed.

MISS CLAY

Faculty Advisor

ELIZABETH HODGES

Club Editor

JOE PRITCHARD

Athletic Editor

LUNEIL BELL

Asst. Feature Ed.

RUTH COLEMAN

Art Editor





REFLECTOR STAFF

The Oglethorpe Society

OFFICERS

TRAWICK STUBBS	<i>President</i>
TRUE WATSON	<i>Vice-President</i>
DORRIS LINDSEY	<i>Secretary</i>
FRANCIS MATHIS	<i>Treasurer</i>
LOIS HUTCHINSON	<i>Chaplain</i>
MRS. Z. S. HENDERSON	<i>Sponsor</i>

MEMBERS

AYCOCK, LEON	LOVE, EARLIE
BIRD, EMMA	MATHIS, FRANCIS
BOYKIN, LINCOLN	MIDDLETON, A. G.
CAIL, VERNON	MILLER, ANNIE
CANNADY, HOWARD	MILNER, FRANCES
CARTER, ELIZABETH	MORGAN, EVA
CLARKE, BENNIE	NEWTON, CLARA
CLARKE, VENNIE	NEWTON, DORIS
COWART, ORA	NEWTON, MAGGIE
DASHER, LUCILE	PARKER, BLANCHE
DUNLAP, HAZEL	RHOAD, CECILE
ELLIS, DALZIE	RINER, JOHNNIE CLYDE
FRANKLIN, ANSEL	ROCKER, LILLIAN
FUTCH, GENEVA	ROUNTREE, EARL
GAY, LAVERT	ROWE, ADA LOU
GRACE, JEANNETTE	RUSHING, DELMAS
HAGIN, DELL	RUSHTON, EDGAR
HENDRICKS, FRED	SMITH, ELOISE
HOUSER, FRANK	SMITH, JANICE
HUTCHINSON, CARRIE D.	STRANGE, RUSSELL
HUTCHINSON, LOIS	STROUD, RUBY
HUTCHINSON, JOSIE	STUBBS, TRAWICK
KING, DORA	THOMAS, BILL
KNOTTS, CELESTIAL	THOMAS, DOROTHY
LANIER, BLANCHE	THOMPSON, PAUL
LEE, EARLE	WILLIAMS, EARL
LINDSEY, DORRIS	WILLIAMS, S. J.



OGLETHORPE SOCIETY



The Stephens Society

DOY GAY	President
SARAH SMITH	Vice-President
TRANNIE TRAPNELL	Secretary
EVIA DELL KEA	Treasurer
MR. PHAGAN	Critic

MEMBERS

ALDRED, GEORGE
 ANDERSON, BERNICE REE
 ANDREWS, RAYMOND
 AYCOCK, ILA
 AYCOCK, KATE
 BAILEY, GRACE
 BAZEMORE, HOLLIE
 BLOUNT, EVELYN
 BONNETT, DARTHA
 BOWEN, BIRMAN
 BOWEN, MYRTLE
 BRYANT, PARKER
 BUE, CHARLIE
 BYRD, ED
 CARTER, ELIZABETH
 COLLINS, LA FIECE
 COLEMAN, BILL
 COLEMAN, RUTH
 COLEMAN, HAROLD
 CAUGHLIN, MAGGIE
 CROWE, NANCY JANE
 CUMMING, MAE
 DAVIS, CLYDE
 DE LOACHIE, FRANK
 ECKLE, INNON
 DRAKE, VERDIE
 DU BOSE, GLADYS
 EDENFIELD, ELIZABETH
 EDENFIELD, INEZ
 EDENFIELD, THOMAS

FIELDS, DAISY
 FIELDS, BLANCHE
 GAY, DOY
 GLISSON, EUGLADE
 GOODEN, OLIVE
 GOODMAN, ELSIE MAE
 HALL, W. L.
 HARMON, KATHLEEN
 HARRISON, LOIS
 HARTMAN, SARA
 HENDRICKS, FRED
 HENDRICKS, ATWOOD
 HODGES, ELIZABETH
 JOINER, RONENA
 JOINER, PAULINE
 JOHNSON, BOTHWELL
 JOHNSON, ALENE
 JONES, MARILEE
 KEA, EVIA DELL
 KENNEDY, ERNEST
 KINNEY, LUCY
 LEE CAROLYN
 LEWIS, VIRGINIA
 LIMERICK, LAMAR
 MARTIN, RUFUS
 MORLEY, ROBERT
 MOSS, CALERIA
 NEAL, LOUISE
 ODOM, GARNETT
 PAFFORD, WALDO

PHILIPS, RALPH
 POWELL, IRENE
 PRICE, WILLIAM HENRY
 PRICE, JAMES
 PRITCHARD, JOE
 RINER, CLAUDIA
 ROBERTS, JULIAN
 ROBERTS, TALMADGE
 ROBSON, THEO
 ROUNTREE, ALLEN
 ROUNTREE, GORDON
 ROUNTREE, C. G.
 SCREWS, FRANK
 SHURLING, FRANCIS
 SMITH, SARAH
 TAYLOR, HELEN
 TILLERY, JAMES
 THOMAS, BILL
 THOMPSON, LOUISE
 TRAPP, EDNA
 TRAPNELL, TRANNIE
 WATERS, LOY
 WATERS, WILLIE BELLE
 WARNOCK, D. F.
 WHITEHEAD, JEWEL
 WILLIAMS, EDNA PEARL
 WILSON, EUNICE
 WAMMOCK, GLADYS
 WAMMOCK, B. F.
 ZEIGLER, ESTELLE



STEPHENS SOCIETY



Richards Home Economics Club

Patience Wins

OFFICERS

TRUE WATSON	<i>President</i>
JOHNNIE CLYDE RINER	<i>Vice-President</i>
ELSIE MAE GOODMAN	<i>Secretary</i>
VIRGINIA LEWIS	<i>Treasurer</i>

MEMBERS

AYCOCK, ILA
 AYCOCK, KATE
 BIRD, EMMA
 CLARKE, BENNIE
 COLEMAN, RUTH
 DASHER, LUCILE
 FIELDS, BLANCHE
 GAY, LAVERT
 GLISSON, EUCLADE
 GRACE, JEANNETTE
 HARMON, KATHLEEN
 HUTCHINSON, CARRIE D.

JONES, MARILEE
 KNOTTS, VIRGINIA
 LEE, CAROLYN
 NEWTON, MAGGIE
 NEWTON, DORIS
 ROBSON, THEO
 SCARBORO, GLADYS
 SMITH, ELOISE
 TAYLOR, HELEN
 THOMPSON, LOUISE
 THOMAS, DOT
 ZEIGLER, ESTELLE



Whistler Art Club

OFFICERS

EUNICE WILSON	President
EVIA DELL KEA	Vice-President
CELESTIAL KNOTTS	Secretary
TRANNIE TRAPNELL	Treasurer

MEMBERS

EDENFIELD, INEZ
 GAY, LAVERT
 GRACE, JEANNETTE
 HAGIN, DELL
 HARMON, KATHLEEN
 HARTMAN, SARA
 HODGES, ELIZABETH
 JOHNSON, ALENE
 JOINER, PAULINE
 KEA, EVIA DELL

KNOTTS, CELESTIAL
 KINNEY, LUCY
 LEE, EARLE
 RINER, CLAUDIA
 RINER, JOHNNIE CLYDE
 THOMAS, DOT
 TRAPNELL, TRANNIE
 WATERS, WILLIE BELLE
 WILSON, EUNICE
 WHITE, MISS



The George-Anne Staff

MAE CUMMING	<i>Editor</i>
ERNEST KENNEDY	<i>Assistant Editor</i>
LAFIECE COLLINS	<i>Athletic Editor</i>
TRANNIE TRAPNELL	<i>Asst. Athletic Editor</i>
ANNIE MILLER	<i>Campus Editor</i>
FRANCIS MATHIS	<i>News Editor</i>
DELMAS RUSHING	<i>Alumni Editor</i>
GEORGE MATHIS	<i>Humor and Features</i>
TRAWICK STUBBS	<i>Typist</i>
MISS CLAY	<i>Faculty Advisor</i>



South Carolina Club

OFFICERS

ANSEL FRANKLIN	President
HAZEL DUNLAP	Vice-President
CELESTIAL KNOTTS	Secretary-Treasurer
MR. AND MRS. SINGLEY	Sponsors
MR. AND MRS. WOODLE	Sponsors

MEMBERS

ELIZABETH CARTER
HAZEL DUNLAP
ANSEL FRANKLIN
CECILE RHOD

VIRGINIA KNOTTS
CELESTIAL KNOTTS
MR. SINGLEY
MRS. SINGLEY
MR. AND MRS. WOODLE



YWCA

CABINET





N. B. CLUB



H. E. K. CLUB



Dramatic Club

OFFICERS

EUNICE WILSON	President
SARA HARTMAN	Vice-President
EVIA DELL KEA	Secretary
CELESTIAL KNOTTS	Treasurer
MRS. J. O. JOHNSTON	Sponsor
MARGARET ANNE JOHNSTON	Mascot

COLORS: *Old Rose and Silver.*

FLOWER: *Rosebud.*

MOTTO: *Discourse hath many tools but oratory is the handle that fits them all.*

MEMBERS

DELL HAGIN	ADA LOU ROWE
SARA HARTMAN	ILA MAE STRICKLAND
EVIA DELL KEA	EUNICE WILSON
CELESTIAL KNOTTS	GLADYS WOMMACK

HONORARY MEMBERS

ELSIE MAE GOODMAN	JOHNNIE CLYDE RINER
ALENE JOHNSON	EVELYN SHUPTRINE
VIRGINIA LEWIS	JANICE SMITH
LAMAR LIMERICK	ESTELLE ZEIGLER
CALERIA MOSS	MISS TRUSSELL



THE GHOST IN THE HOUSE



TOLD IN A CHINESE GARDEN



HIS MODEL WIFE



Glee Club

MEMBERS

ANDREWS, RAYMOND
 BAILEY, GRACE
 BELL, LUNEIL
 BLACK, WELDON
 BLOUNT, EVELYN
 BRYANT, PARKER
 BYRD, ED
 CARTER, EDITH
 CARTER, ELIZABETH
 COLEMAN, BILL
 COLEMAN, RUTH
 DIXON, RALPH
 DUNLAP, HAZEL
 EDENFIELD, ELIZABETH
 EDENFIELD, THOMAS
 FUTRELLE, LUCILE
 FIELDS, DAISY

GRACE, JEANNETTE
 GOODMAN, ELSIE MAE
 HARMON, KATHLEEN
 HARTMAN, SARA
 HENDERSON, RALPH
 HODGES, ELIZABETH
 JOINER, PAULINE
 JOHNSON, JESSIE
 JOHNSON, MARY
 KEA, EVIA DELL
 KNOTTS, CELESTIAL
 KINNEY, LUCY
 LEE, CAROLYN
 LEGGETT, DILLON
 MARTIN, RUFUS
 MOBLEY, ROBERT
 NEAL, LOUISE

PRITCHARD, JOE
 RINER, CLAUDIA
 RINER, JOHNNIE CLYDE
 ROUNTREE, ALLEN
 ROUNTREE, C. G.
 ROUNTREE, CORDON
 RUSHING, DELMAS
 RUSHTON, EUGAR
 STUBBS, TRAWICK
 THOMPSON, LOUISE
 TRAPNELL, TRANNIE
 THOMAS, DOROTHY
 WATERS, LOY
 WATERS, WILLIE BELI
 WATSON, TRUF
 WILSON, EUNICE



Student Council

OFFICERS

EARLIE LOVE *President*
 TRAWICK STUBBS *Vice-President*
 WILLIE BELL WATERS *Secretary-Treasurer*

MEMBERS

BAZEMORE, HOLLIE	GOODMAN, ELSIE MAE
BELL, LUNEIL	HENDRICKS, ATWOOD
BUIE, CHARLIE	JOHNSON, B. A.
CARTER, EDITH	MATHIS, GEORGE
DUNLAP, HAZEL	ODOM, GARNETT
FRANKLIN, ANSEL	ROWE, ADA LOU
GAY, DOY	THOMAS, DOROTHY

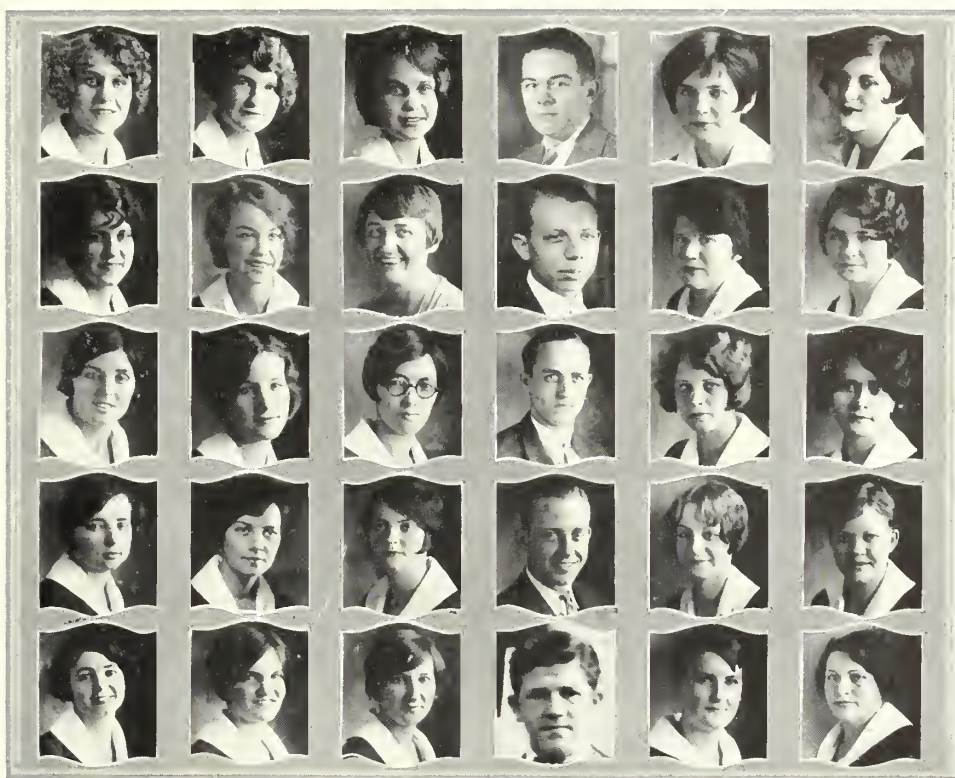
THOMAS, BILL



McDOWELL MUSIC CLUB



LATIN CLUB



Tennis Club

OFFICERS

DORRIS LINDSEY	President
CELESTIAL KNOTTS	Secretary
HAZEL DUNLAP	Treasurer
MISS TRUSSELL	Sponsor

MEMBERS

ANDREWS, RAYMOND
 BAILEY, GRACE
 BOWEN, BURMAN
 CARTER, EDITH
 CARTER, ELIZABETH
 COLEMAN, RUTH
 CUMMING, MAE
 DUNLAP, HAZEL
 FIELDS, DAISY
 GRAHL, RUTH
 HALL, W. L.
 HARMON, KATHLEEN
 HARRISON, LOIS
 HARTMAN, SARA
 HUTCHINSON, JOSIE
 KINNEY, LUCY

KNOTTS, CELESTIAL
 LEE, CAROLYN
 LINDSEY, DORRIS
 MILLER, ANNIE
 MOBLEY, ROBERT
 NEAL, LOUISE
 NEVIL, ROXIE
 PARKER, BLANCHE
 POWELL, IRENE
 ROUNTREE, GORDON
 SMITH, SARAH
 STROUD, RUBY
 STUBBS, TRAWICK
 TRAPNELL, TRANNIE
 TRUSSELL, MISS
 WALL, JACK



High School Team

MISS HILL	<i>Coach</i>
BLANCHE FIELDS	<i>Captain</i>
EDITH CARTER	<i>Alternate Captain</i>
BLANCHE FIELDS	MARILEE JONES
ILA AYCOCK	EDITH CARTER
EVA MORGAN	EMMA BIRD



College Team

MISS HILL, *Coach*

DOROTHY THOMAS
DAISY FIELDS
GLADYS WOMMACK
PAULINE JOINER
MAGGIE NEWTON
CELESTIAL KNOTTS
DORIS NEWTON
LAVERT GAY

RONENA JOINER
LOIS HARRISON
DORRIS LINDSFY
OLIVE GOODEN
SARA SMITH
EVIA DELL KEA
CLAUDIA RINER
TRANNIE TRAPNELL

TRUE WATSON, *Captain*

MAE CUMMING
SARA HARTMAN
LUCY KINNEY
EUNICE WILSON
JESSIE JOHNSON
LOIS HUTCHINSON
GRACE BAILEY



DAISY FIELDS
Sponsor Football Team



FOOTBALL TEAM



BASKET-BALL TEAM

Games of 1927-1928

FOOTBALL

Normal defeated Douglas Junior College 2-0.
Normal defeated South Georgia A. and M. 6-0.
Normal defeated B. C. 25-6.
Normal defeated Fort Screven 6-0.
Normal was defeated by A. R. C. 16-0.
Normal defeated B. P. I. 25-7.
Normal defeated Piedmont Institute 26-13.
Normal tied B. P. I. 0-0.

BASKET-BALL

Normal defeated Brooklet 14-13.
Normal defeated Metter Athletic Club 26-19.
Normal defeated South Georgia A. and M. 39-34.
Normal defeated B. P. I. 30-29.
Normal was defeated by Vidalia Athletic Club 54-32.
Normal defeated Metter Athletic Club 40-21.
Normal was defeated by A. R. C. 40-24.
Normal was defeated by B. C. 26-25.
Normal defeated Douglas Junior College 31-17.
Normal was defeated by South Georgia A. and M. 38-31.
Normal defeated Norman Park Institute 34-31.
Normal was defeated by B. P. I. 26-24.
Normal was defeated by Thomas A. Jones 39-30.
Normal defeated Douglas Junior College 39-21.
Normal was defeated by Thomas A. Jones 30-21.
Normal was defeated by B. C. 40-36.



SCHOOL SNAPSHOTS

1927

G.N.S. CALENDAR

1928

SEPT. 13



SCHOOL OPENS WITH
LARGE ENROLLMENT

OCT. 3

FOOT BALL SEASON
OPENS.

G.N.S. DEFEATS
DOUGLAS A&M 2-0



OCT. 7 — STUDENT BODY
TAKES IN BULLOCH CO. FAIR



OCT. 12 — "Y" CABINET AND
TWO OTHER REPRESENTATIVES
GO TO SAVANNAH TO REPRESENT
G.N.S. AT STATE W.C.T.U.
CONVENTION

OCT. 26 STUDENT BODY IS THE
GUEST OF STATE FAIR IN
SAVANNAH

OCT. 28

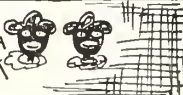
MRS.
HENDERSON
PREPARES
HER
FIRST
MEAL



NOV. 6 — MISS GOODSEN OF
G.S.C.W. WAS A VISITOR ON
CAMPUS AND GAVE US AN
INTERESTING TALK IN VESPER
SUNDAY EVENING.

NOV. 16 —

EUNICE AND EVA
DELLE TURN BLACK
OVERNIGHT



NOV. 17

FIFTEEN RAHS
FOR THE NEW
LIGHTS ON
CAMPUS. WAS
HEARD THIS AFTERNOON

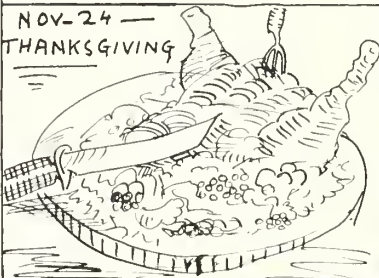


NOV. 21 —

MISS KATHERINE BUTLER
THE NATIONAL SECRETARY OF THE
"Y" WAS A VISITOR ON THE CAMPUS
SHE GAVE US SOME VALUABLE
HINTS ON OUR "Y". ALSO AN
INTERESTING TALK IN CHAPEL

NOV. 24 —

THANKSGIVING



NOV. 24 —

FOOT BALL SEASON
CLOSES. G.N.S. HAVING LOST
ONLY ONE GAME

DOUGLAS 0 - G.N.S. 7
TIFTON 0 - G.N.S. 6
B. C. 6 - G.N.S. 25
FT. SCREVEN 0 - G.N.S. 6
A. R. C. 14 - G.N.S. 0
B. P. I. 7 - G.N.S. 25
A. P. M. 13 - G.N.S. 26
B. P. I. 0 - G.N.S. 0

NOV. 30 —

MISS CHARLOTTE
FRAZIER WAS A VISITOR ON THE
CAMPUS. SHE IS A W.C.T.U. WORKER

NOV. 30 —

TERM EXAMS BEGIN !!!

DEC. 2

STEAM HEAT

CAME SLOWLY BUT
SURELY

DEC. 9

NEGRO MINSTREL



DEC. 15



LIGHTS STAY ON ALL NIGHT
'T WAS THE NIGHT BEFORE
X MAS HOLIDAYS

DEC. 16 —

EVERY BODY LEAVES FOR THE
— HOLIDAYS —

JAN. 3 SCHOOL OPENS



JAN. 6 — THE Y.W.C.A. GIRLS

ENJOYED A PAJAMA PARTY
IN THE LOBBY OF THE
GIRLS DORMITORY

JAN. 7 —

Mr. Sutton was a
visitor on the
campus. His
speeches were
enjoyed by all —



— DR. SUTTON

BILL THOMAS

1927

G.N.S. CALENDAR

1928

(CONTINUED)

JAN. 17 — THERE WAS AN INTERESTING BASKET BALL GAME BETWEEN THE SOPH. & FRESHMEN GIRLS THE FINAL SCORE WAS **20-20**.

JAN. 25 — MR. NEWTON, EDITOR OF THE CHRISTIAN INDEX, GAVE US AN INTERESTING TALK IN CHAPEL "WE SHALL NEVER FORGET IT."

Mr. Newton

JAN. 30



MR. WELLS RIDES ON THE SAME TRAIN THAT THE SAVANNAH HIGH SCHOOL BASKET BALL TEAM DOES. HE BROUGHT BACK A FEW EXTRA CLOTHES.

JAN. 31 — ANOTHER GAME BETWEEN THE FRESHMEN AND SOPHOMORE GIRLS BUT THE FRESHMEN WON THIS TIME — **30-23**

FEB 2

GEO ALDRED OFFERED HIS SERVICES IN DEHALF OF UNCLE SAM IN NICARAGUA.

BUT WE SEE THAT HE'S STILL ON THE CAMPUS.



FEB 2-

GRAND OPERA AT G N S

FEB 4 —

SOPHOMORE BOYS DEFEAT FRESHMEN BOYS IN A CLOSE BASKET BALL GAME TONIGHT - BY A SCORE OF 7-10.

FEB. 6 —

CORNDEAD TEACHES SCHOOL AT COOPERVILLE.

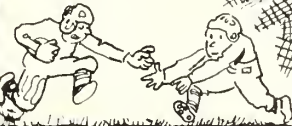
ALL THE BOYS MAY GO



[PROF. MEMORIE]

ANYTIME IN FEBRUARY —

HIGH SCHOOL AND FRESHMEN PRACTICE FOR CLASS FOOT BALL



FEB 16 — DR WALDO WAS A VISITOR ON THE CAMPUS

ON THE NIGHT OF FEB. 16



BOYS HAVE PRELIMINARY TO THE FOOT BALL GAME IN DORMITORY

FEB. 17. THE HIGH SCHOOL AND FRESHMEN HAVE THEIR FIRST GAME — WHEN THE FINAL WHISTLE BLEW THE SCORE WAS

0-0 IN FAVOR OF ??

FEB. 13 —

VALENTINE CARNIVAL

IT WAS ENJOYED BY EVERYBODY

ESPECIALLY "DOWN ON THE FARM."

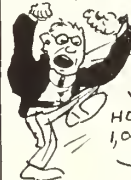
ALL THE TIME.

Read The "ADS"

FEB 16 — THE FOURTEEN IDEALS OF G.N.S. APPEARED IN THE LOBBIES OF OUR BUILDINGS — NOW WE CAN SEE THEM EVERY DAY.

FEB. 18 — THEO TELLS US THAT LINCOLN WAS THE SECOND PRESIDENT OF THE UNITED STATES

FEB. 20 — THE FRESHMEN BOYS DEFEAT THE HIGH SCHOOL BOYS IN THE SECOND FOOT BALL GAME — 7-0.



HOOP A LOURIE

VERDIE SAYS HOOP A LOURIE 1,000,000 TIMES.

FEB. 25 —

FRIED EGGS FOR BREAKFAST I WONDER WHY. ? ? ?

FEB. 27 —

FRESHMEN WIN FROM HIGH SCHOOL. 14-6



WELL THEY PUT UP A GOOD GUY

BY HIS NAME

MARCH 1 —

REFLECTOR GOES TO PRESS.

The End.

BILL THOMAS



BERNICE LEE
May Queen

LOLALE FOUNTAIN
Maid of Honor

Jokes

Mr. Rustin: "Now, Miss Stubbs, in this picture I want you to laugh."

Miss Stubbs: "Oh, wait a minute then, Mr. Rustin. I'll have to laugh on the other side."

* * * * *

In Bible class each student was asked to give the points that he had learned from the lesson.

Mr. Phagan: "Bill, what did you get out of today's lesson?"

Bill Coleman: "I got sleepy."

* * * * *

James: "Who was that peach I saw you with?"

Gordon: "She wasn't a peach: she was a grapefruit."

James: "Why grapefruit?"

Gordon: "I squeezed her and she hit me in the eye!"

* * * * *

Found on a Freshman's registration card:

Question: "Give your parents' names."

Answer: "Papa and Mamma."

* * * * *

Miss Trussell: "What great law is New credited with having discovered?"

Physics Class (in unison): "The bigger they are, the harder they fall."

* * * * *

Ada Lou: "A new book has just arrived called 'How to Go to College on \$500 a Year.' How shall I classify it?"

Miss Stubbs: "Ah, put that in the fiction department, under romance."

* * * * *

Parker was standing on the top step of the Administration building. Marion, standing below, said: "Gee, Parker, if you should fall, you would fall a long way."

Burman: "Marion is so low down that if she should fall she wouldn't even reach the next step."

* * * * *

A pessimist is a guy who won't brush his teeth for fear of wearing them out.

* * * * *

When "Coach" Pritchard told Uly to go to the locker room and get a new football, Uly said, "What size shall I get?"



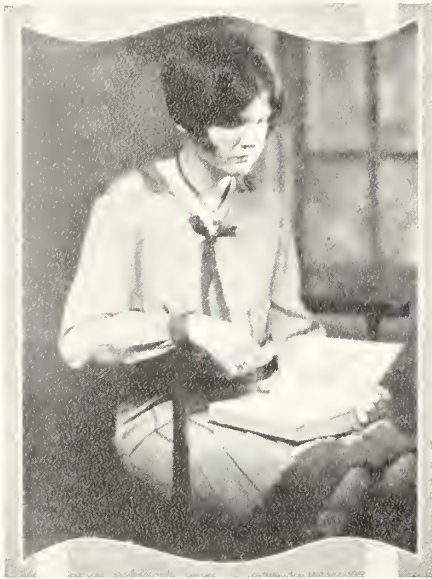
FEATURES-

BILL THOMAS

RUTH COLEMAN
Most Beautiful



PARKER BRYANT
Handsomest



ANNIE MILLER
Most Studious



S. J. WILLIAMS
Most Studious

TRANNIE TRAPNELL
Best Athlete



VERNON CAIL
Best Athlete



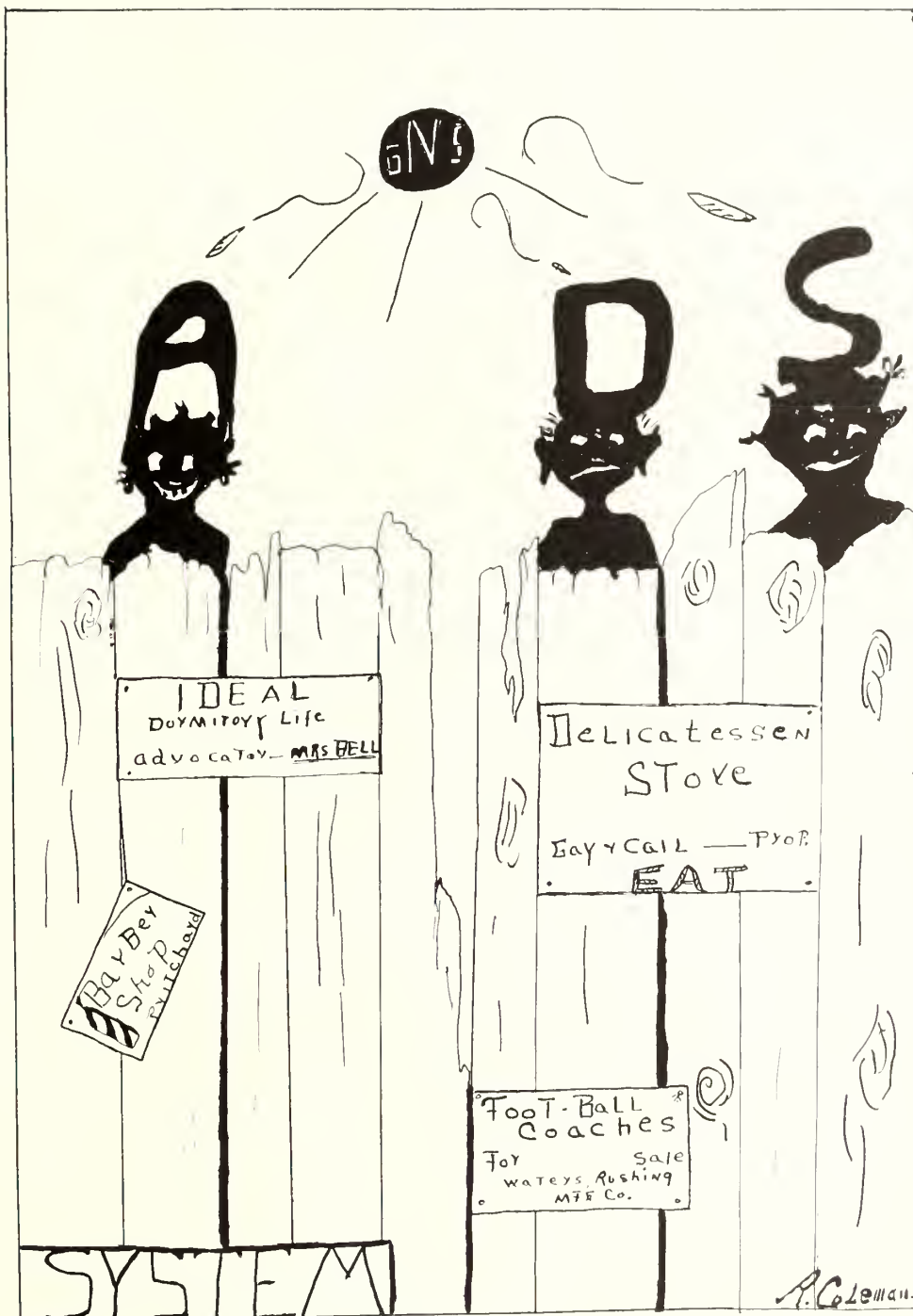
DORRIS LINDSEY
Best All Round

FRANCIS MATHIS
Best All Round
Most Popular



HAZEL DUNLAP
Most Popular





Congratulations

—TO THE—

Graduating Class of 1927-1928



BEST WISHES FOR THE
CONTINUED SUCCESS OF
THE GEORGIA NORMAL COLLEGE



JAKE FINE

(INCORPORATED)

SUCCESSORS TO R. SIMMONS CO., INC.

"THE STORE WITH A MILLION FRIENDS"

"Where Nature Smiles"

STATESBORO,

::

GEORGIA

AFTER GRADUATION---

WHAT?

ONE OF THE BEST THINGS A YOUNG MAN OR
WOMAN CAN LEARN IS THE BANKING HABIT.

YOUR SUCCESS DEPENDS MORE ON THE WIS-
DOM OF YOUR BANKING CONNECTION THAN
ANY OTHER FACTOR.

WE WELCOME THE YOUNG BUSINESS MAN OR
WOMAN.



SEA ISLAND BANK

"THE BANK OF PERSONAL SERVICE"

STATESBORO, GEORGIA

NuGrape

Reg U S Pat Off

IMITATION GRAPE — NOT GRAPE JUICE

A FLAVOR YOU CAN'T FORGET

DEMAND IT IN THIS BOTTLE

To Avoid *SUBSTITUTION* and
DISAPPOINTMENT

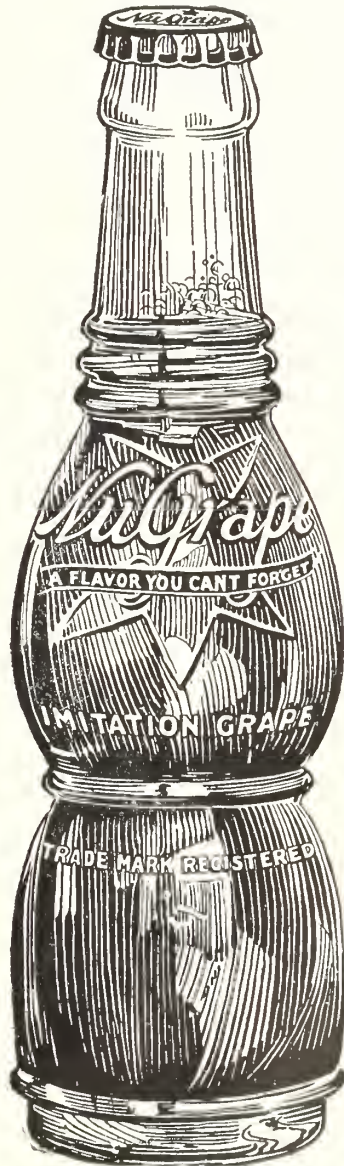
Every Bottle Sterilized and Thor-
oughly Inspected Before
Leaving Our Plant.

We are Bottlers of High Grade
Sodas and Ginger Ale.

"Quality and Service"
OUR MOTTO

Phone 487

Nu-Grape
Bottling Company
Statesboro, Georgia



From Where They Are to Where They
Ain't, The Year 'Round

FRUITS

**P
R
O
D
U
C
E

P
R
O
V
I
S
I
O
N
S**

GROCERIES

Alfred Dorman

W H O L E S A L E

STATESBORO, GEORGIA

::

SYLVANIA, GEORGIA

CANDLER, BULLOCH AND SCREVEN COUNTIES

Refresh Yourself

5c gives you the beverage that delights
taste and truly quenches thirst.

Pure and Wholesome

DRINK

Coca-Cola

IN BOTTLES

*Prepared with the finished art that comes from
a lifetime of practice*

A College for Teachers

The Georgia Normal School at Statesboro is a first class college in your own section of the State because:

1. Its buildings, equipment and library are approved and valued at \$350,000.00.
2. Its faculty is composed of college teachers of long experience who hold graduate degrees.
3. Its course of study compares favorably with the other three normal colleges in the state. Get our catalogue and compare them.
4. The State of Georgia provides us a maintenance fund of \$60,000.00 annually. This fund provides the money to satisfactorily operate a college.

The above four statements cover the things necessary to make a college. Write for a catalogue. You can enter now.

Georgia Normal School

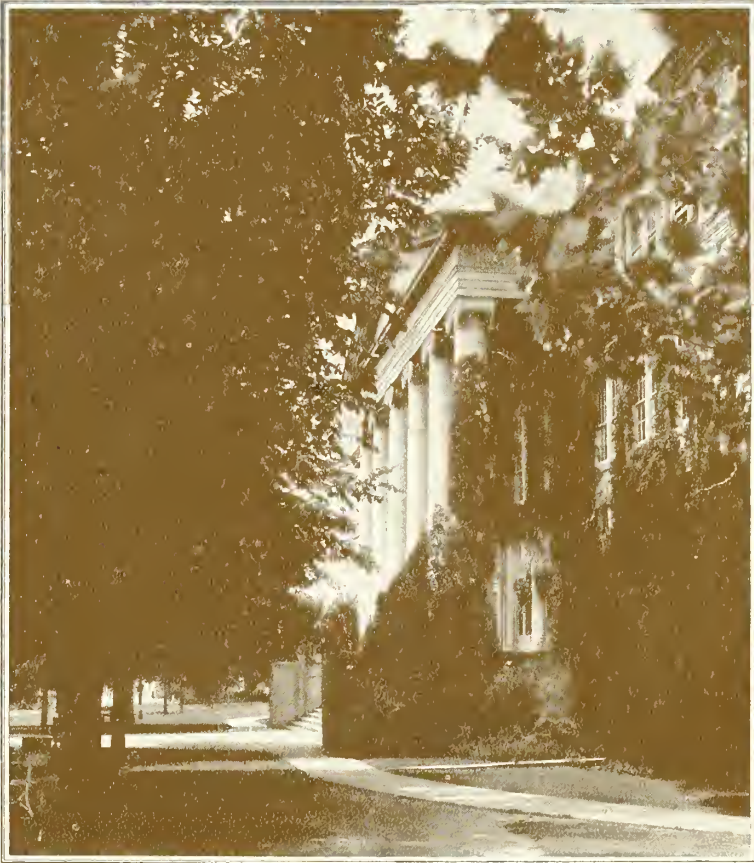
A State College for Teachers

Statesboro, Georgia



Where
the
Production
of your
Annual
Combines
the
Inspiration
of
Ancient
Artisans
and the skill
of Modern
Craftsmen

FOOTE & DAVIES
+ ATLANTA +



*Memories Live
through pictures*

The visual image of these dear spots will recall good times—friendships—loves. Through SWECO master-engraving, each tender memory has been preserved for you. "Your Story in Picture—Leaves Nothing Untold"—should you later have use for engraving, will you not remember kindly—

SOUTHWESTERN ENGRAVING CO.

FORT WORTH	DALLAS	HOUSTON
BEAUMONT	WICHITA FALLS	
AMARILLO	TULSA	ATLANTA

KEWANEE FIREBOX BOILERS

*Heat Thousands of Finer
School Buildings Best*

KEWANEE BOILER CORPORATION

Kewanee, Illinois

ATLANTA BRANCH
955 Marietta Street, N. W.

THE SEELEY COMPANY, INC.

ATLANTA, GEORGIA

Power Piping and Heating Contractors

We installed the new heating system at the Georgia Normal School and eliminated practically every pipe fitting—substituting same with welded outlets and pipe bends. This type of installation is the “Last-Word” in piping construction and the first institution in the State of Georgia to be so equipped.

Edwards and
Sayward

ARCHITECTS

Atlanta, Ga.

Kuppenheimer
College
Clothes

\$35.00 to \$50.00



THOS. A. JONES CO.

SAVANNAH, GEORGIA

*IF IT'S SPORTING
GOODS WE HAVE IT!*

BASEBALL : FOOTBALL
BASKET-BALL : VOLLEY-BALL

We can furnish every article needed
for these great sports.

We handle Goldsmith and A. J.
Reach, Wright & Ditson complete lines.

Also Tennis Equipment, Guns and
Ammunition, Hunting Clothing, John-
son Outboard Motors, Boats and Canoes,
Archery Equipment and Camp Supplies

Mail Orders Given Prompt
Attention

Stubbs Hardware & Sporting Goods Company

119 Congress Street, West
Savannah, Georgia



Herff-Jones Company

INDIANAPOLIS, IND.

OFFICIAL JEWELER

—for—

Georgia Normal

CLASS RINGS, PINS
INVITATIONS, CARDS

Individual orders filled on your
pins or rings any time.

GUARANTEED

H. S. CANFIELD
Georgia Representative

*COMMENCEMENT
INVITATIONS*

RECEPTION AND VISITING CARDS
MONOGRAM STATIONERY
DANCE PROGRAMS
DIPLOMAS
FRATERNITY AND CLASS
STATIONERY

Invitations and Announcements for All
Occasions Correctly and Promptly
Engraved

*Send for our samples and
prices*

J. P. Stevens Engraving Co.

Society Engravers

103 Peachtree Street

ATLANTA, GEORGIA

Confidence---

WE feel that our past record and steady growth are evidence that we are worthy of your confidence. The policies of this bank are founded on honest, upright principles. Strict adherence to honest, sound methods has done much toward the growth of this institution.

THE FIRST NATIONAL BANK

Statesboro, : Georgia

THE REXALL STORE

Everything in Drugs

**LIGGETT'S and NUNNALLY'S
PRODUCTS**

KODAKS

CIGARS, TOBACCO

STATIONERY, MAGAZINES

FRANKLIN DRUG COMPANY

"A GOOD DRUG STORE"

PHONE 2

BLITCH - PARRISH COMPANY

**SELLS
THE BEST OF
EVERYTHING
TO WEAR**



Statesboro, : Georgia

BULLOCH TIMES



**The
Home Newspaper**



*A FRIEND OF THE
GEORGIA NORMAL*

DR. OSCAR JOHNSON

DENTIST

STATESBORO, : GEORGIA

Compliments of—

H. B. STRANGE

Judge of Superior Court

Every lady is our friend,
And declares we're "on the mend,"
When it comes to ladies' shoes,
Best materials we choose.
To work with honest will,
And good shoe-repairing skill.
Neither do we patrons rob,
By high charging for a job,
But leave it every time complete,
Satisfactory and neat.

J. Miller Shoe Factory
STATESBORO, GEORGIA

THE COUNTRY STORE

R. B. Hendrix, *Prop.*

FRIEND TO GEORGIA
NORMAL

STATESBORO, GEORGIA

HINTON BOOTH

ATTORNEY AT LAW

4 Courtland Street

STATESBORO, : GEORGIA

S. STEINBERG & CO.

LADIES' READY-TO-WEAR

HATS : SHOES

A Specialty

HEMSTITCHING AND PICOTING
ROYAL SOCIETY GOODS

Always Ready to Serve You.

MRS. W. W. DeLOACH

First National Bank Building

THE QUALITY STORE

DRY GOODS, NOTIONS
and INFANTS' WEAR

11 North Main Street

STATESBORO, GEORGIA

DR. D. R. DEKLE

OPTOMETRIST

Bank of Statesboro Building

STATESBORO, GEORGIA

BRAID & HUTTON

Incorporated

*PRINTERS, STATIONERS
and LITHOGRAPHERS*

10-18 Whitaker Street

SAVANNAH, GEORGIA

USE THE BEST

BUTLER'S PREPARED PAINTS

Manufactured by

John G. Butler Company

SAVANNAH, GEORGIA

These paints may be purchased in Statesboro from agents W. C. AKIN & SON.

A. C. OELSCHIG & SONS

"Say It With Flowers"

NURSERY

Bull Street at Oglethorpe Avenue

Phone 496 SAVANNAH, GA.

Sheridan Teachers' Agency

GREENWOOD, S. C.

The oldest agency in the South.

Covers thoroughly the entire South, especially Georgia and Carolinas. Satisfactory service guaranteed. If you wish a position for fall term write us at once. Many Georgia openings.

ACME

MOTION PICTURE MACHINES

—FOR—

Schools, Churches, Homes
Georgia Normal School—Proud Owners
of Two Projectors

N. E. SAVINI, Agent

P. O. Box 954, ATLANTA, GA.

MILTON BRADLEY CO.

ATLANTA, GEORGIA

*"EVERYTHING FOR
THE SCHOOL"*

CATALOGUES FREE

Compliments

of—

DR. J. H. WHITESIDE

1908

20 YEARS

1928

*"THE KODAKER'S
FRIEND"*

SWING FRAMES

—AND—

24-HOUR SERVICE

FRAMES MADE TO

Send us your films

ORDER.

RUSTIN'S STUDIO

"THE OLD RELIABLE"

20 YEARS IN STATESBORO

14 YEARS EXPERIENCE IN

ANNUAL WORK

*PHOTOGRAPHIC ENLARGEMENTS ONE OF OUR
SPECIALTIES*

OUR EQUIPMENT ENABLES US TO PICTURE
YOU DAY OR NIGHT,
-RAIN OR SHINE

NEW LOCATION

34 North Main Street

PHONE 485

THE CHAMBER OF COMMERCE

STATESBORO, GEORGIA

These Two Civic Clubs Are Enthusiastic
Promoters of the Development
Program of the Georgia
Normal School

They Stand Ready to Lead or Assist in
the Development of Other Worthy
Community Enterprises.

THE WOMAN'S CLUB

STATESBORO, GEORGIA

SAM A. NORTHCUTT

WM. P. NORTHCUTT

NORTHCUTT BROS.

MASTER
DRY CLEANERS AND DYERS

41 EAST MAIN STREET

The Boys That Appreciate Your Business

PHONE 18

STATESBORO, GA.

EAST SIDE EGGERY

NORTHCUTT BROS., *Props.*

BABY CHICKS

HATCHING EGGS

CUSTOM HATCHING

The chicks you get from us are hatched right. Bred to grow and lay. We use only large Buckeye Mammoth Incubators. We have hundreds of satisfied customers. We take off over 1000 chicks every Monday. You are invited to come to our hatchery whether you buy or not.

Get your orders in early.

GORDON STREET, Near Cemetery

**CITY DRUG
COMPANY**

*The Drug Store with that
"AT HOME FEELING"*



TELEPHONE 37

STATESBORO, : GEORGIA

W. C. Akins & Son
GROCERIES AND HARDWARE

Service is Our Motto

WE APPRECIATE YOUR TRADE

E. C. Oliver Co.

LADIES' AND GENTS'
READY-TO-WEAR

Store of Quality

STATESBORO, : GEORGIA

**Don't say Bread
SAY HOLSUM**

SOLD BY ALL GROCERS

Compliments of—

Hajoca Corporation

Wholesale Manufacturers and
Dealers of Plumbing and
Heating Equipment
Nearest Branch

SAVANNAH, : GEORGIA

**THE FLANDERS
PRINTING CO.**

Opposite Courthouse

19 Courtland Street

Statesboro, : Georgia

"PRINTERS WHO SATISFY"

Let us do your printing *ouce*
and we will *always* do it.

Flanders' 14th Year in Statesboro

FOR—

HEALTH and BEAUTY
THE VELVET KIND
ICE CREAM

DELICIOUS — IN MANY FLAVORS

—ON SALE AT—

CITY DRUG CO.
ELLIS DRUG CO.

THACKSTON'S



CLEANERS

DYERS



STATESBORO, : GEORGIA

**Anderson, Waters &
Brett, Inc.**

FURNITURE

HOUSE FURNISHING GOODS

PHONOGRAPHS

—AND—

RECORDS

22 SOUTH MAIN STREET

STATESBORO, : GEORGIA

The NEW FORD combines
SPEED : BEAUTY : COMFORT : RELIABILITY

MUST BE DRIVEN TO BE APPRECIATED

S. W. LEWIS

AUTHORIZED DEALER

STATESBORO,

::

GEORGIA

AMUSU THEATRE

HEAR
*The Only Pipe Organ in
Bullock County*

A PLACE FOR THE LIVE
ONES

CHANGE OF PROGRAMS
TUESDAY : THURSDAY
AND SATURDAY

P. G. WALKER, *Manager*

H. W. SMITH

JEWELER WATCHMAKER

"GIFTS THAT LAST"

For Any Occasion

20 S. Main St., Statesboro, Ga.

Patronizing us is like making love to
an old maid—you can't overdo it.

Preston's Shoe Repairing Shop

In Sea Island Bank Building
PHONE 355

C. N. S.

HEADQUARTERS

**HOLLAND
DRUG
COMPANY**

"Where the Crowds Go"

414 : PHONE : 414

W. H. Aldred's Store

A clean place for clean
customers

—and a—

*Hearty Welcome to All Georgia
Normal Students*

*Compliments
of—*

Dr. J. M. Burgess

Chiropractor

Statesboro, Georgia

**BAXTER'S
BARBER
SHOP**

*Where the Ladies and
promise is children a
performed specialty*

M. RAWDON OLIFF

ERNEST E. BRANNEN

**OLIFF FUNERAL
HOME**

AMBULANCE

LADY ASSISTANT

L. J. Shuman & Co.

Groceries, Fresh and Cured Meats

Fish and Oysters in Season

COUNTRY PRODUCE

Phone 332 15 W. Main St.

Statesboro, Georgia

TEACHERS NEEDED

We especially need First Grade, Seventh Grade, Science combined with Athletics, Modern Languages, Domestic Science, Penmanship and Drawing. We invite correspondence from all well prepared teachers.

Continuous Registration

SOUTHERN TEACHERS' AGENCY

FOUR OFFICES:

Columbia, S. C. Chattanooga, Tenn.
Richmond, Va. Louisville, Ky.

DR. E. N. BROWN

DENTIST

OLIVER BUILDING

PRINTING : LITHOGRAPHING

M. S. & D. A. BYCK CO.

Savannah, Ga.

OFFICE SUPPLIES : STATIONERY

FOR BEST NURSERY STOCK

Send Your Orders to

FRUITLAND NURSERIES

Augusta, Georgia

"The South's Oldest Nursery"

DR. J. C. LANE

DENTIST

OLIVER BUILDING

ROGERS, INC.

WHERE SATISFACTION

IS A

CERTAINTY

Raines Hardware Co.

THE STORE OF

SERVICE AND QUALITY

Phone 6

Statesboro, Ga.

Lannie F. Simmons

GROCERIES

FRESH MEATS, FEED AND SEEDS

Statesboro, Georgia

WE SELL THE BEST FOR LESS

Phones 20 and 366

STUDEBAKER DEALER

Averitt Brothers Auto Company



Statesboro, Georgia

For Results Expected
FEED
THE OLD RELIABLE

**GOBER'S
GREAT 8**

Horse Feed
Mule Feed
Dairy Feed
Poultry Feed

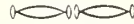
GOBER'S GREAT "8" CHICK STARTER

GOBER'S GREAT "8" GROWING MASH

GOBER'S GREAT "8" LAYING MASH

BEST BY ACTUAL TEST

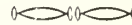
THERE IS MORE GRAIN IN GOBER'S
Quality - Uniformity - Service



CONKEY'S FEEDS

—AND—

POULTRY REMEDIES

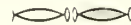


IF YOU HAVE NOT USED

American Beauty

"THE FLOUR THAT BLOOMS IN YOUR
OVEN"

YOU HAVE NOT HAD THE BEST
ON THE MARKET



GOFF GROCERY COMPANY

STATESBORO, :: GEORGIA



RESERVE

LH

1

.G43

R4

1928

ZACH S. HENDERSON LIBRARY



0 2001 0407679 5

FOR REFERENCE

NOT TO BE TAKEN FROM THE ROOM

DEMCO

