

Georgia Southern University

## Georgia Southern Commons

---

[At a Glance \(2011-2016\)](#)

[About Georgia Southern](#)

---

2012

### At a Glance: Georgia Southern University

Follow this and additional works at: <https://digitalcommons.georgiasouthern.edu/glance>



Part of the [Higher Education Commons](#)

---

#### Recommended Citation

"At a Glance: Georgia Southern University" (2012). *At a Glance (2011-2016)*. 3.  
<https://digitalcommons.georgiasouthern.edu/glance/3>

This article is brought to you for free and open access by the About Georgia Southern at Georgia Southern Commons. It has been accepted for inclusion in At a Glance (2011-2016) by an authorized administrator of Georgia Southern Commons. For more information, please contact [digitalcommons@georgiasouthern.edu](mailto:digitalcommons@georgiasouthern.edu).



# *At a Glance*

GEORGIA SOUTHERN UNIVERSITY



*The historic center of Georgia Southern, Sweetheart Circle, features an oasis of live oaks, greenspace and buildings dating back to 1906.*



*Georgia Southern is home to three bald eagles, including Freedom, who flies at football games and Spring Commencement.*

*Georgia Southern enjoys a rich athletic tradition. It's famed Eagles football team has won six national championship series titles (FCS) and advanced to the semifinals of the 2011 NCAA FCS playoffs.*



**GEORGIA  
SOUTHERN**  
UNIVERSITY

## *An Overview*

Through more than 100 years, Georgia Southern, a Carnegie Doctoral-Research University, has stayed true to one purpose: to advance the educational and economic aspirations of Georgians. A member of the University System of Georgia, it is one of the state's premier universities with nearly 20,000 students, and is also one of the top choices in the state for new freshmen and HOPE scholars. Georgia Southern is the only college or university in the state to earn recognition as one of the top 10 most popular universities in the country by *U.S. News & World Report*.

Located just an hour from historic Savannah, Hilton Head Island and the Atlantic coast, Georgia Southern's 900-plus acre campus is nestled in the classic Main Street community of Statesboro. The city's host county of Bulloch continues to grow along with the University and is home to more than 70,000 residents.

The University's traditional residential campus includes three original 100-year-old red brick and white columned buildings anchoring a "historic district" that transitions into contemporary academic and residential buildings - many of which were completed or begun during the past decade's nearly \$300 million of construction and renovation projects.

# *Students*

Georgia Southern hosts students from nearly every state and more than 100 nations. The average SAT scores for freshman classes exceed both state and national averages.

University students are engaged in community volunteerism, campus theatre productions, academic organizations and recreational athletics. They can choose from more than 300 campus organizations, including 33 social sororities and fraternities, plus honor societies, religious, political and service groups.



# *Faculty*

Georgia Southern's faculty is committed to a student-centered learning environment, engaging students in academic research and cultural and community activities.

At Georgia Southern, professors not only teach classes, but advise majors and encourage a personal learning environment where students regularly co-present research at regional and national conferences with their faculty mentors. With small classes, students have the opportunity to get to know their professors.

# *Academic Programs*

Georgia Southern offers more than 120 degree programs in eight colleges specializing in Business Administration, Education, Health and Human Sciences, Engineering and Information Technology, Liberal Arts and Social Sciences, Public Health, Science and Mathematics and Graduate Studies.

The University is accredited by the Southern Association of Colleges and Schools, while individual programs and departments hold special accreditations from professional and academic associations that set standards in their fields.

Georgia Southern's University Honors Program attracts high-achieving students to its reserved classes, seminars and programs. The Office of Student Leadership and Civic Engagement encourages students to make leadership a part of their college resumés and a life-enriching skill.



## *Alumni*

Georgia Southern alumni - more than 75,000 strong - are spread around the globe and are engaged in virtually every profession. The University hosts Eagle Clubs in Georgia, Florida, South Carolina, North Carolina and in Washington, D.C. More clubs are being added each year.

## *Allen E. Paulson College of Engineering and Information Technology*

Named in honor of aviation innovator Allen E. Paulson, the founder of Gulfstream Aerospace Corp., the College combines high-demand degree programs in engineering and IT to meet the training needs of the state, region and country. These degree programs include mechanical, electrical and civil engineering as well as information technology and computer sciences.

## *College of Business Administration*

The College's degree programs are consistently ranked among the best in the nation by *U.S. News & World Report* and *The Princeton Review*. New courses of study are developed to meet the needs of global business. The School of Economic Development is the only one of its kind in the Southeast, and Georgia Southern is one of only a handful of American universities to offer a program in forensic accounting.

## *College of Education*

The College of Education supports two centers focusing on educational improvement: The Center for International Schooling coordinates the activities of the International Learning Community (ILC) through a partnership with universities in the United Kingdom. The Georgia Center for Educational Renewal conducts research to contribute to education reform.

## *College of Liberal Arts and Social Sciences*

Encompassing the humanities, social sciences, languages and the arts, the College of Liberal Arts and Social Sciences promotes critical and creative thinking skills, effective communication, intellectual curiosity, appreciation for the power of the arts, leadership and citizenship.





*Georgia Southern recently combined the University's engineering, information technology and computer science programs to form the Allen E. Paulson College of Engineering and Information Technology:*





*After an extensive two-year renovation, Hendricks Hall reopened as the new home of the Jiann-Ping Hsu College of Public Health (JPHCOPH). Originally a residence hall, Hendricks now houses a state-of-the-art Public Health Core Laboratory; the Rural Health Research Institute and the Public Health Library.*

## *College of Health and Human Sciences*

The College of Health and Human Sciences focuses on the health and well-being of individuals, families and communities with degree programs in the School of Nursing, School of Human Ecology and Department of Health and Kinesiology. The Family Nurse Practitioner program consistently ranks among the top programs in the nation according to *U.S. News & World Report*.

## *College of Science and Mathematics*

The College of Science and Mathematics offers nationally recognized programs in biology, chemistry, geology and geography, military science, physics, pre-medical/pre-dental and mathematical sciences. The College ushered in a new era of research and teaching technology with the groundbreaking of a new \$41 million LEED-certified Biological Sciences Building, scheduled to open in spring 2013.



*Georgia Southern offers fully online undergraduate and graduate degree programs in business, education, healthcare and more.*

## *Giann-Ping Hsu College of Public Health*

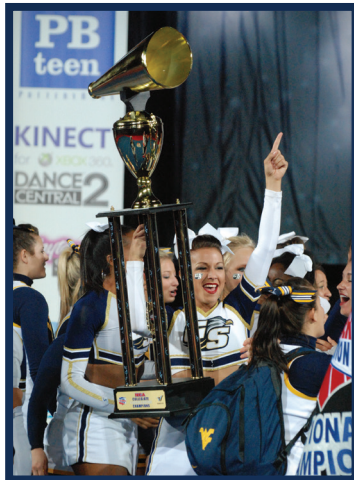
The first school of public health in the state, the Giann-Ping Hsu College of Public Health offers Master of Health Services Administration, Master of Public Health and Doctor of Public Health degrees. The College is one of only 48 colleges or schools of public health worldwide to receive accreditation and oversees four centers as part of its mission: the Center for Rural Health and Research, the Center for Survey Research and Health Information, the Karl E. Peace Center for Biostatistics and the Center for Addiction Recovery.

## *Jack N. Averitt College of Graduate Studies*

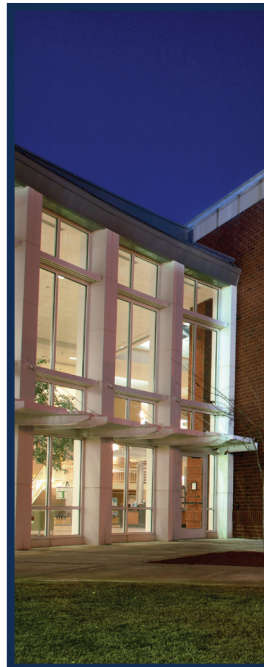
The Averitt College of Graduate Studies offers more than 40 graduate degree programs in seven colleges through both campus and online delivery. Graduate students partner with and assist faculty in research, while taking advantage of academic resources and a supportive environment to earn advanced training in their fields of discipline.



*The Eagle softball team celebrated the best record in the program's history by winning the 2012 Southern Conference Championship.*



*The female Eagle cheerleading squad brought home their third national championship after winning the 2012 NCA National Championships.*





## *Eagle Athletics*

Georgia Southern fields 15 NCAA teams with a storied program that has achieved national accolades on and off the field. In addition to six national football championship flags flying at Allen E. Paulson Stadium, Georgia Southern teams and individuals regularly compete for conference and national honors.

Athletics teams include: football, men's and women's basketball, baseball, volleyball, golf, men's and women's tennis, track and field, cross country, swimming and diving, softball and men's and women's soccer.



## *Recreation Activity Center*

In addition to offering all the amenities of a gym membership, the Recreation Activity Center houses intramural sports and Southern Adventures, an outdoor adventure service. A bandshell and picnic pavilion for hosting concerts and events are included on the spacious grounds.



*The state-of-the-art Foy Building provides quality learning experiences for music students with a music technology lab, expanded classrooms and rehearsal halls. A variety of musical performances are held in the Carol A. Carter Recital Hall, located within the facility.*

## *Symphony*

The Georgia Southern Symphony contributes to the cultural environment of the larger Statesboro and Coastal Georgia communities. The group performs a broad range of classical and popular compositions through its annual concert series.

## *Planetarium*

Georgia Southern's Planetarium, located in the Math-Physics Building, features a new Digistar 4 full dome digital planetarium system. Visitors also enjoy virtual tours of the universe from the Hubble Space Telescope. During the fall and spring semesters, the Planetarium offers free educational presentations for school and public groups.



*The Betty Foy Sanders Department of Art transforms Sweetheart Circle every spring to host the community ArtsFest. The event features music, interactive exhibits, local artists, vendors and crafts for all ages.*

*"Ascend," a sculpture symbolic of artistry, nature and pride, welcomes visitors to Georgia Southern's Center for Art & Theatre. University art professor Marc Moulton designed and created the piece.*



## *Center for Art & Theatre*

The Center for Art and Theatre provides new opportunities for students, faculty and the public through the visual and performing arts. One of its three galleries is the permanent home for The Georgia Artists Collection, a continuously expanding gift of pieces established and curated by Betty Foy Sanders, Bulloch County native and wife of former Georgia Gov. Carl Sanders. Other galleries feature scheduled exhibitions of private, student and faculty works. The Center also hosts a 150-seat Black Box Theatre for student performances.

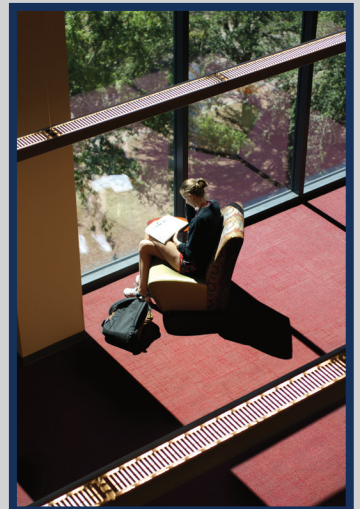




## *Division of Continuing Education & Public Services*

The Division of Continuing Education and Public Services offers programs to improve the education and skills of the region's workforce, to enhance the cultural offerings of the area and to promote personal development and facilitate the constructive use of leisure time.

In addition to professional development, the Division's home, the state-of-the-art Nessmith-Lane Conference Center, hosts short courses and seminars ranging from dance to dog training and from party planning to summer learning camps for kids.





## *Zach S. Henderson Library*

The Zach S. Henderson Library serves more than 4,000 people daily with resources that support a comprehensive array of degrees, disciplines, research activity and lifelong learning. With 400+ hard-wired computer work stations, access to archives of data and information, and an innovative storage solution, the Henderson Library ranks as one of the most technologically advanced in the Southeast.

The Library was designed for both independent and collaborative learning and includes group study rooms, presentation practice rooms and a Learning Commons equipped with stations for standard and multi-media applications. The facility houses more than one million books, periodicals and other documents. Behind the scenes, the Automated Retrieval Collection (ARC) allows for the efficient and compact storage of hundreds of thousands of current resources and future acquisitions.





*Located at the Botanical Garden, the Oak Grove School is a restored one-room schoolhouse from Tattnall County that once served rural students from the late 19th- to mid-20th century.*

## *Botanical Garden*

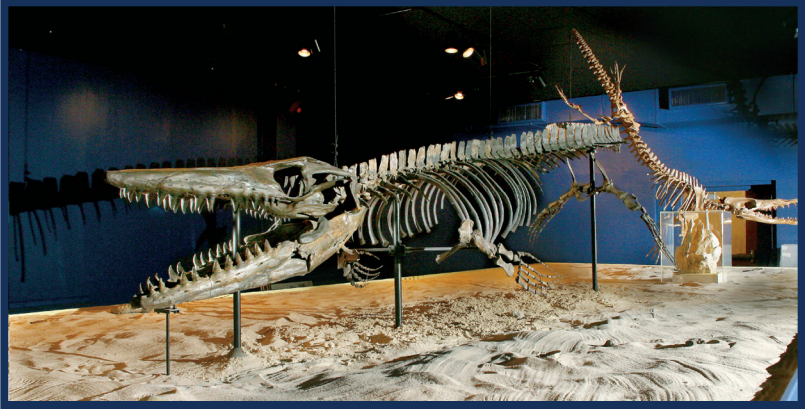
Centered on the early 20th-century farmstead of Dan and Catharine Bland, the Georgia Southern Botanical Garden offers visitors a unique view of the heritage of the southeastern Coastal Plain. Established to promote knowledge and appreciation of native plants and animals, the 11-acre Garden connects people of all ages to the natural resources of the region and inspires environmentally responsible behavior.

## *Center for Wildlife Education & Lamar Q Ball, Jr. Raptor Center*

Located in the heart of the Georgia Southern campus, the Center for Wildlife Education and Lamar Q Ball, Jr. Raptor Center is a living laboratory of forest and wetland creatures and the habitat in which they live. The Center has become a top destination for families and tourists, drawing thousands each year. The diverse native habitats are home to three American bald eagles, one golden eagle and several species of birds of prey including hawks, owls and falcons.



*The Wetland Preserve is a 12-acre oasis within the Wildlife Center that includes a beaver lodge, cypress pond and a waterfowl pond that provides a home for herons, egrets and ducks.*



## *Museum*

For more than two decades, the University Museum has showcased artifacts of the natural and cultural history of the region, as well as offered visiting exhibits from U.S. and international museums. The only accredited museum of its kind in the coastal region, both its permanent and traveling educational programs appeal to a wide range of interests and ages and include interactive and hands-on programs for children, adults, families and teachers.





## *Performing Arts Center*

The Performing Arts Center is home to world-class touring shows, renowned lecturers and programs for cultural outreach. The 825-seat theatre features an orchestra pit and shell, a full-sized stage and state-of-the-art technology for lighting, sound and production.



# Points of Pride 2012



Georgia Southern's diverse student population celebrated a milestone this academic year with a record enrollment of 20,212 students from 49 U.S. states and more than 100 nations.

Construction is underway on a new \$41 million Biological Sciences Building, scheduled to open in spring 2013. The LEED-certified building design includes modern lab and research spaces, as well as space for group work and cooperative learning activities.



The University established the Allen E. Paulson College of Engineering and Information Technology, combining high-demand degree programs in mechanical, electrical and civil engineering with information technology and computer sciences to create a unique educational environment in the region.

Georgia Southern was named one of the top 10 most popular universities in the nation by *U.S. News & World Report*, the only college or university in the state of Georgia and in the southeast to earn this recognition. The University was also named one of "America's Best Colleges" by *U.S. News & World Report* and *Forbes*.



The University earned the fourth spot in the nation for graduating African-Americans majoring in the physical sciences by *Diverse: Issues in Higher Education*.

Georgia Southern's Rural Health Research Institute was awarded a \$450,000 federal grant to promote diabetes education in rural areas. The Institute is made up of current researchers and new faculty hires from various fields who are finding ways to reduce health disparities and improve the outcome of patients in rural areas.

University researchers have been awarded a \$385,000 grant by the National Institutes of Health to study the immediate and long-term effects of concussions. The research will help treat student athletes who suffer the head injury.

The University joined forces with the Adopt-A-Soldier program to collect “Snacks for Soldiers” serving overseas. Through snack drives on campus and at home football games, students have collected more than 5,200 snacks for troops serving in Afghanistan. Georgia Southern was also recognized as one of the most military friendly universities in the nation in *Military Advanced Education’s* 2012 Guide to Military-Friendly Colleges and Universities.

Georgia Southern received a \$913,000 grant from The Goizeuta Foundation to establish and support Hispanic/Latino student recruitment and retention.

The Jiann-Ping Hsu College of Public Health (JPHCOH) is one of only 48 schools or colleges of public health worldwide to receive accreditation. The College has also received a \$100,000 grant from the Robert Wood Johnson Foundation to help improve public health services around the state for at-risk citizens.

The University’s online graduate programs in business, education, information technology and nursing have been ranked among the nation’s best in the first-ever edition of Top Online Education Program rankings by *U.S. News & World Report*. The Master of Science in Nursing - Family Nurse Practitioner program was also ranked in the top 20 nationally from the publication.

Georgia Southern’s team of student and faculty archaeologists received the U.S. Department of the Interior’s Partners in Conservation award for their work in discovering Camp Lawton, a long-lost Civil War prison camp.

The University is a participant in the

“Georgians Experience Astronomy Research In Schools” (GEARS) project. As part of the project, a \$1 million NASA grant will fund the development of a curriculum that will change the way astronomy is taught in Georgia’s public high schools.

The University’s School of Nursing has been awarded a three-year grant in the amount of \$792,000 from the Health Resources and Services Administration of the U.S. Department of Health and Human Services, complementing the college’s online Doctor of Nursing Practice degree program. Georgia Southern has also received a three year, nearly \$1 million grant from the National Institutes of Health (NIH) and the National Center on Minority Health and Health Disparities (NCMHD) to fund the Minority Health International Research Training (MHIRT) program within the school.

The Eagles football team reached the FCS semifinals for the second-straight year in 2011, nearly reaching the national championship game for the ninth time, and Georgia Southern’s female cheerleading squad won their third NCA National Championship in 2012. Last fall, Georgia Southern Athletics’ 15 varsity programs posted the highest GPA in program history.

History professor Robert Batchelor uncovered centuries-old Chinese trade routes that have been hidden for nearly 400 years while researching maps in Oxford University’s Bodleian Library.

The University has partnered with Herty Labs to form the Georgia Southern University Herty Advanced Materials Development Center, furthering research in the areas of transportation, building materials, forestry and the environment.



# *The City of Statesboro*

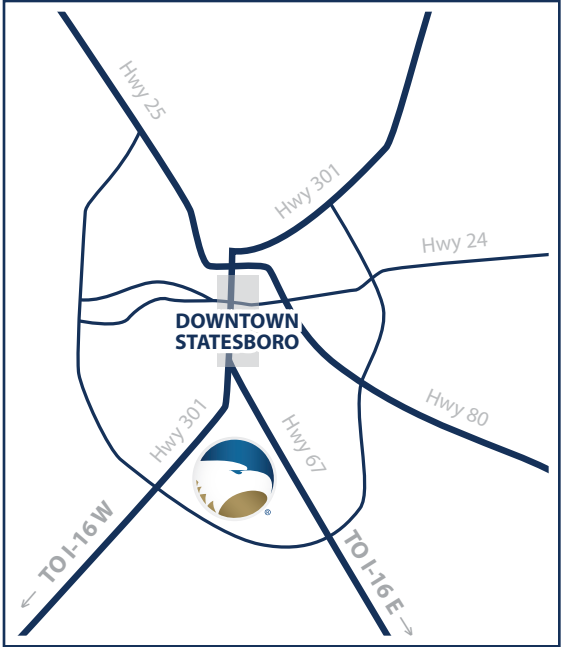
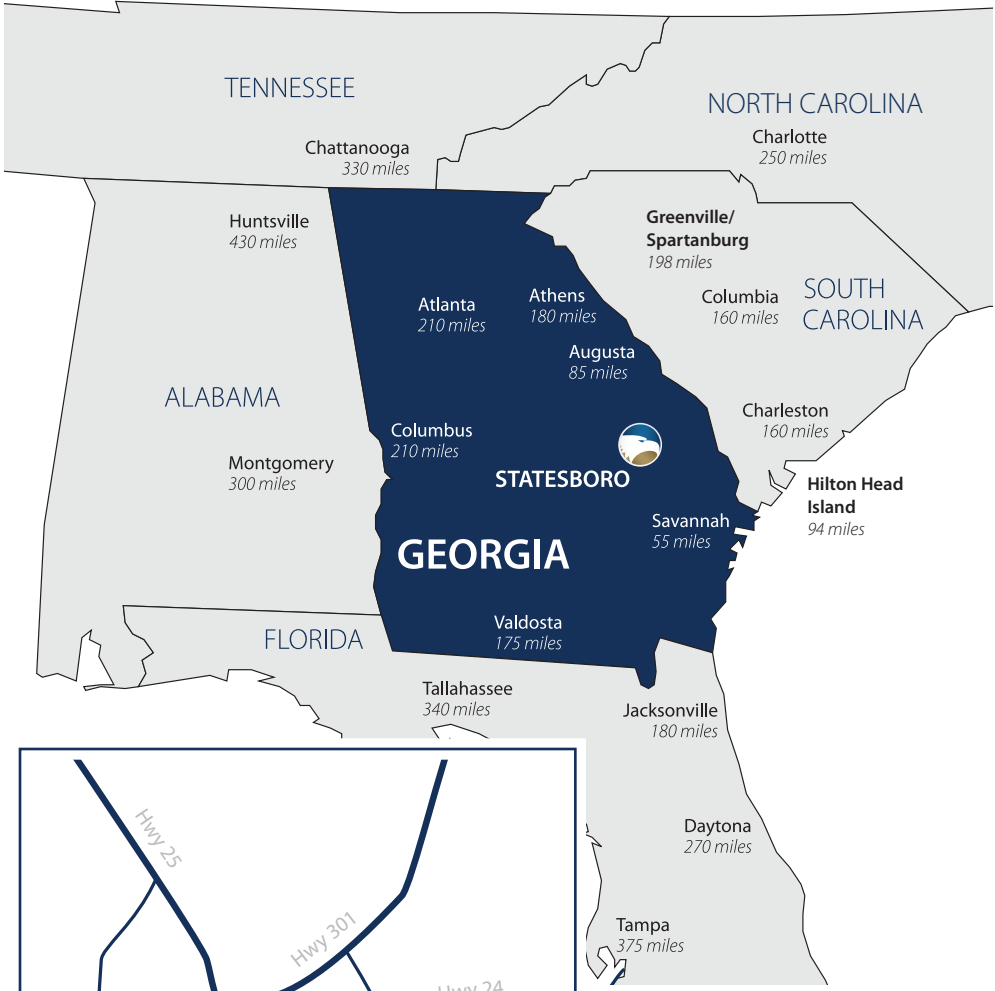
Statesboro and Georgia Southern enjoy a longstanding cooperative relationship which has worked to their mutual benefit. Their collaboration includes the opening of City Campus, a site enhancing entrepreneurial activity in the community with classrooms and meeting space for business professionals.

The University's economic and educational influence has helped to give Statesboro some of the highest quality of life in the region. Conversely, Statesboro embraces students with its comfortable blend of small-town friendliness while assuming a life of its own as a regional retail and health care hub.

A Main Street community, Statesboro's charm, coupled with cultural opportunities, rivals metropolitan areas. The addition of new businesses and activities makes it a unique place to live, work and learn.



# Contact Us



## GEORGIA SOUTHERN UNIVERSITY

100 Southern Drive  
Statesboro, Georgia 30458

[GeorgiaSouthern.edu](http://GeorgiaSouthern.edu)

912-478-4636 (912-GSU-INFO)





**GEORGIA  
SOUTHERN**  
UNIVERSITY