

Georgia Southern University

Georgia Southern Commons

Commencement Programs

Graduation

Fall 2012

2012 Fall Commencement

Georgia Southern University

Follow this and additional works at: <https://digitalcommons.georgiasouthern.edu/commencement-programs>



Part of the [Higher Education Commons](#)

Recommended Citation

Georgia Southern University, "2012 Fall Commencement" (2012). *Commencement Programs*. 13.
<https://digitalcommons.georgiasouthern.edu/commencement-programs/13>

This brochure is brought to you for free and open access by the Graduation at Georgia Southern Commons. It has been accepted for inclusion in Commencement Programs by an authorized administrator of Georgia Southern Commons. For more information, please contact digitalcommons@georgiasouthern.edu.

TWENTY FIRST ANNUAL
FALL
COMMENCEMENT

December 14, 2012
Hanner Fieldhouse
Statesboro, Georgia



GEORGIA SOUTHERN
UNIVERSITY

GEORGIA SOUTHERN UNIVERSITY



Georgia Southern University, a Carnegie Doctoral/Research University, is a member institution of the University System of Georgia. It is one of the most comprehensive centers of higher education in Georgia. A residential campus of more than 20,500 students, Georgia Southern is one of the top universities of choice in Georgia for new freshmen and for HOPE Scholars. Students come from 49 U.S. states and 93 nations, bringing a broad spectrum of backgrounds, interests and talents to the University community.



The University's hallmark is a superior educational experience with all of the benefits of a major university, but the feel of a much smaller college. It is this combination that serves as the foundation for the University's outstanding reputation for academic excellence and focus on its students. At Georgia Southern, our students value: a well-rounded college experience, a faculty where professors know their name and their first priority is teaching. In addition, students appreciate a campus environment that encourages learning and growing. With expanding graduate programs and opportunities for discovery, Georgia Southern University also embraces its research mission.



The University offers more than 120 degree programs at the baccalaureate, master and doctoral levels through eight colleges: Liberal Arts and Social Sciences, Education, Business Administration, Health and Human Sciences, Jiann-Ping Hsu College of Public Health, Allen E. Paulson College of Engineering and Information Technology, College of Science and Mathematics and the Jack N. Averitt College of Graduate Studies. Georgia Southern is accredited by the Southern Association of Colleges and Schools and has earned special accreditation from professional and academic associations that set standards in their fields.



The University is listed in *U.S. News & World Report's* Best Colleges and was named one of the top 10 most popular universities in the country in 2012. The University has also been recognized as one of the most military friendly schools by multiple publications including *G.I. Jobs* and *Military Advanced Education*. In addition, its outstanding College of Business Administration and Nursing programs continue to be recognized among the best in the country.



Founded in 1906 as a district agricultural school, Georgia Southern's century of history has built a tradition of spirit, pride and achievement. The institution advanced to become a teachers' college, a senior college and in 1990 earned its status as the first university in the southern half of Georgia. Located in Statesboro, a safe, classic Main Street community of approximately 30,000 residents northwest of Savannah, the University provides enriching cultural and educational opportunities of all ages, and reaches



out to benefit the region and state through research and public service.

Georgia Southern University's more than 900-acre campus is one of the most beautiful in the state, featuring gently rolling lawns, scenic lakes and soaring pines. The historic heart of campus is a classic college portrait - red brick and white columns framed by live oaks and an archway of pecan trees. Beyond the circle of the original buildings, classic and contemporary lines blend in an expanding horizon of new facilities, connected by a paver-tiled walking boulevard called the Pedestrium. During the past decade, the University has witnessed extraordinary development with the construction of new academic, housing and athletic facilities. Continued enhancement and growth of the campus include a major expansion of the library, the Center for Art & Theatre, and additional fitness and recreational amenities.

Georgia Southern serves its Coastal Southeast region, state and Southeast United States through research and public services that promote educational, economic, cultural and social progress through creative solutions to regional challenges. Research varies from probing the genetic chemistry of disease-spreading parasites for keys to their biological control, to advancing the economic development of the region. Centers for business research and development, rural health, international studies, public affairs, teacher education, rehabilitation technology, water policy and biostatistics involve teams of experts working on regional and community concerns. The University extends educational opportunities through both undergraduate and graduate online degree programs and classes accessible from anywhere in the world with an internet connection.

Georgia Southern has gained recognition for its nationally competitive athletics program. The University's 15 Division I teams compete in the Southern Conference. Cross-the-board commitment to excellence has resulted in an unprecedented six NCAA Football Championship Series (FCS) football national championships and NCAA participation in men's and women's basketball, baseball, golf, softball, women's tennis, women's track and field and volleyball.

The University also has an active alumni program serving more than 75,000 alumni around the world. Some of the University's prominent alumni include Country Music Star Luke Bryan; Mike Davis, Executive Director of the U.S. Golf Association (USGA); Hala Moddlemog, President, Arby's Restaurants; and Dan Cathy, President and Chief Operating Officer of Chick-Fil-A.

For more information, visit the University's home page at www.georgiasouthern.edu.

ACADEMIC DISTINCTION

Graduation with Honors

Undergraduate students who accomplish a high level of academic achievement, as reflected by their grade point average, receive distinction as follows:

Grade Point Average:

3.5-3.6 *Cum Laude*

3.7-3.8 *Magna Cum Laude*

3.9-4.0 *Summa Cum Laude*

Students graduating with honors are distinguished at commencement exercises by a blue and white honor cord attached to the left shoulder of their gowns. Their distinction is recognized by notation on their diplomas and in their academic transcripts.

NOTE: Since programs are prepared in advance of the receipt of final grades, the listing of graduates and honor recipients may, in some instances, be inaccurate. Also, in addition to GPA, there are other requirements to qualify for graduation with honors. The fact of graduation and the receipt of honors are validated by the students' permanent records which are kept by the Office of the Registrar.

University Honors Program Scholars

The University Honors Program offers a special Honors curriculum to a select group of academically talented students. In addition to high academic standards, the Program requires a substantial commitment to community service and experiential learning. The diplomas of graduating University Honors Program Scholars are distinguished by the UHP designation.

University Honors Program 1906 Scholars

The 1906 Scholarship is the most prestigious award for incoming freshmen in the University Honors Program. In addition to their participation in the University Honors Program, these students enroll in a sequence of additional seminars dedicated to service, leadership and research.

THE SYMBOLS OF ACADEMIC TRADITION

The Mace

Leading the Processional of faculty and administration is the Macebearer, the Moderator of the Faculty Senate at Georgia Southern University.

The Mace is a two-and-one-half foot shaft and sphere of cast Everdur Bronze and carved American walnut. This representation of the ceremonial symbol of office and authority was designed and crafted in 1988 by Thomas P. Steadman, Associate Professor of Art. Its angular forms and low-gloss finishes are reminiscent of the medieval battle mace from which the more scepter-like academic mace evolved.



The design of the Mace blends forms suggested by native flora of South Georgia. The magnolia leaves and stems encircling the head of the mace in a double helix symbolize Georgia Southern's link with its region. A small ballast rock, found on the Georgia coast and traced to probable British origin, is embedded in the finial base of the shaft representing the foundation of the institution.

Regalia

The history of academic attire is also traced to the Middle Ages when it may have been necessary for scholars to wear gowns and cowls for warmth in the unheated halls of academe of the period. The robes and hoods have evolved as ceremonial garments signifying level of degree, academic field, and the awarding institution.

Today's gowns for baccalaureate, masters, education specialist, and doctoral degrees are made of a rayon blend, always black. Bachelors gowns have pointed sleeves and are worn closed. The gowns for the masters and specialist degree, also worn closed, have an oblong sleeve with a base that hangs open at the wrist. The doctoral gowns have bell-shaped sleeves which may be worn open or closed. It is the tradition of Georgia Southern to reserve hoods for masters and education specialist degree candidates. These hoods are black, three and one-half feet long, lined with the official colors of the institution, and trimmed in velvet in the color of the degree field.

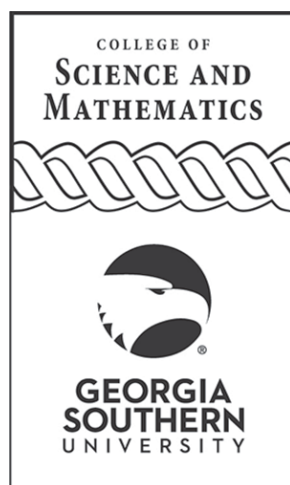
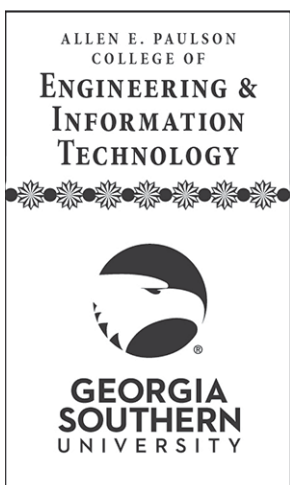
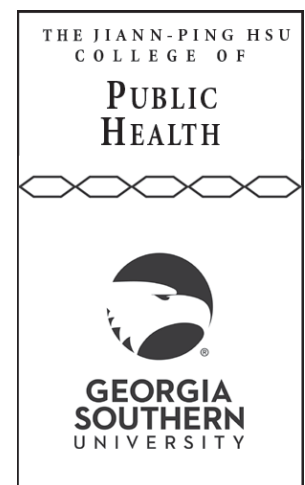
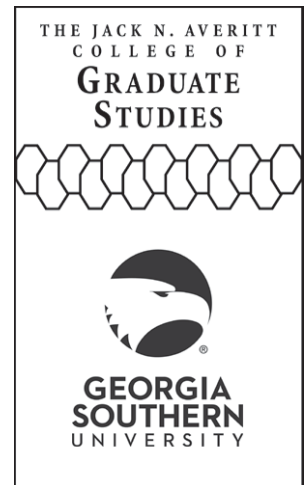
Caps in the form of mortarboards are made of cotton poplin or a similar material. The tassel is the color which reflects the degree.

The ornamental braided cord draped over the left shoulder of some of the baccalaureate graduates is called a fourragere. The design follows French military tradition and signifies special recognition of baccalaureate students graduating with honors.

Banners

Banners representing each of the eight Colleges, the Center for International Studies, and the University Library are displayed at Commencement. Representation of the Banners signify the colors of disciplines in the Colleges, and celebrate the University's academic programs.

COLLEGE AND UNIVERSITY LIBRARY BANNERS



ACADEMIC COLORS

Jack N. Averitt College of Graduate Studies

Light Blue	Doctor of Education
Apricot	Doctor of Nursing Practice
Citron	Doctor of Psychology
Light Blue	Education Specialist
Drab	Master of Accounting
	Master of Arts
White	English
White	History
White	Social Science
White	Sociology
White	Spanish
Light Blue	Master of Arts in Teaching
Drab	Master of Business Administration
Light Blue	Master of Education
Brown	Master of Fine Arts
Pink	Master of Music
Peacock Blue	Master of Public Administration
	Master of Science
Science Gold	Biology
Science Gold	Computer Science
Sage Green	Kinesiology
Science Gold	Mathematics
Citron	Psychology
Sage Green	Recreation Administration
Sage Green	Sport Management
Orange	Master of Science in Applied Engineering
Apricot	Master of Science in Nursing
Orange	Master of Technology

Jiann-Ping Hsu College of Public Health

Salmon Pink	Doctor of Public Health
Kelly Green	Master of Healthcare Administration
Salmon Pink	Master of Public Health

Center for International Studies

	Bachelor of Arts
Aquamarine	International Studies
	Bachelor of Science
Aquamarine	International Trade

College of Business Administration

Drab	Bachelor of Business Administration
	Bachelor of Arts
Copper	Economics
	Bachelor of Science
Maroon	Hotel and Restaurant Management
Orange	Bachelor of Science in Construction

College of Education

Light Blue	Bachelor of Science in Education
------------	----------------------------------

Allen E. Paulson College of Engineering and Information Technology

	Bachelor of Science
Science Gold	Computer Science
Orange	Bachelor of Science in Civil Engineering Technology
Orange	Bachelor of Science in Electrical Engineering Technology
Science Gold	Bachelor of Science in Information Technology
Orange	Bachelor of Science in Mechanical Engineering
Orange	Bachelor of Science in Mechanical Engineering Technology

College of Health and Human Sciences

	Bachelor of Science
Maroon	Child and Family Development
Maroon	Fashion Merchandising and Apparel Design
Maroon	Hotel and Restaurant Management
Maroon	Interior Design
Maroon	Nutrition and Food Science
Sage Green	Recreation
Sage Green	Sport Management
Sage Green	Bachelor of Science in Health Science
Sage Green	Bachelor of Science in Kinesiology
Apricot	Bachelor of Science in Nursing

College of Liberal Arts and Social Sciences

	Bachelor of Arts
Science Gold	Anthropology
Brown	Art
Crimson	Communication Arts
White	English
White	History
White	Modern Languages
Pink	Music
Dark Blue	Philosophy
Dark Blue	Political Science
Citron	Psychology
White	Sociology
Brown	Theatre
White	Writing and Linguistics
Brown	Bachelor of Fine Arts
Gold & White	Bachelor of General Studies
Pink	Bachelor of Music
	Bachelor of Science
Silver	Communication Studies
Crimson	Journalism
Crimson	Multimedia Communication
Dark Blue	Political Science
Citron	Psychology
Crimson	Public Relations
White	Sociology
Orange	Bachelor of Science in Graphic Communications Management
Science Gold	Bachelor of Science in Justice Studies

College of Science and Mathematics

	Bachelor of Arts
Science Gold	Biology
Science Gold	Chemistry
Science Gold	Geography
Science Gold	Geology
Science Gold	Physics
	Bachelor of Science
Science Gold	Geography
Science Gold	Geology
Science Gold	Mathematics
Science Gold	Bachelor of Science in Biology
Science Gold	Bachelor of Science in Chemistry
Science Gold	Bachelor of Science in Mathematics
Science Gold	Bachelor of Science in Physics

EMERITUS FACULTY

President Keel has recommended to the Board of Regents of the University System of Georgia that the following staff member and faculty members be granted emeritus status upon retirement:

Mr. Thomas Michael Deal, Registrar and Adjunct Instructor, who retired on March 1, 2012. Mr. Deal received his Bachelor of Business Administration in General Business from Georgia Southern College in 1974 and earned his Master of Education in Adult Education from Georgia Southern College in 1989. Joining Georgia Southern in 1982, Mr. Deal served as an Administrative Supervisor in the Office of the Registrar and was promoted in 1983 to Assistant Director of Records. In 1985, he was promoted to Associate Registrar and in 1988 became the acting Registrar. He served as the Registrar from 1990 until his retirement in March 2012. Throughout his career, Mr. Deal served on countless college and university committees, including the NCAA Re-certification Subcommittee for Academic Integrity, Business and Finance University Level Program Review Committee, Information Technology Advisory Committee, Student Information Steering Committee, Enrollment Management Council, Academic Standards Committee, Admissions Committee Co-Chair, Undergraduate Curriculum Committee, Graduate Curriculum Committee, Calendar Committee, representative for Georgia Southern to the University System Uniform Calendar Committee, and representative for Georgia Southern to the University System Academic Common Market Committee. He was known for giving his time selflessly, working with students, faculty, and the university community in general. Mr. Deal's numerous professional affiliations include membership and positions in the American Association of Collegiate Registrars and Admissions Officers, the Southern Association of Collegiate Registrars and Admissions Officers, membership and positions in the Georgia Association of Collegiate Registrars and Admissions Officers. He also held positions on the University of Georgia Regents' Advisory Committee on Records and Admissions and the Institutional Representative to College Board. For these and his many other contributions to the University and profession, Mr. Deal richly deserves to be honored posthumously as Registrar Emeritus.

Dr. Nancy Bishop Dessommes, Assistant Professor of Writing and Linguistics, who is retiring December 31, 2012. Dr. Dessommes received her A.F.A. in Music (1973) from Young Harris College, her B.A. (1975) from Georgia Southern College, her M.A. (1978) from Auburn University, and her Ph.D. (2006) from Indiana University of Pennsylvania upon completing her dissertation, *Whiteness and Resistance: Investigating Student Concepts of White Privilege in the Writing Classroom*. In a professional career of over 30 years, Dr. Dessommes began teaching at Georgia Southern in 1988 as a temporary instructor in the Department of English and Philosophy and was promoted to Assistant Professor in 1995. In 2001, she joined the faculty of the Department of Writing and Linguistics. During her 24 years of service to Georgia Southern University, Dr. Dessommes served on numerous committees, including search committees and as a board member for the Center for Irish Studies. Among her scholarly activities were publications on distance education, literature, and popular culture and frequent presentations at two important national conferences: Conference on College Composition and Communication and the National Council of Teachers of English conference. Presentations at regional conferences showcased her interest in popular culture, literature, and the scholarship of teaching. She served the profession as co-chair of the Student Success in First-Year Writing conference, which brought high-school teachers and university faculty together to discuss student transition from secondary education to college, and as an active fellow of the Georgia Southern Writing Project. In recognition of her meritorious contributions and service to the department, the College of Liberal Arts and Social Sciences, the University, and the profession, Dr. Nancy Bishop Dessommes is awarded the title of Assistant Professor Emerita of Writing and Linguistics.

Dr. Mary Hadley, Associate Professor of Writing and Linguistics, who is retiring December 31, 2012. Dr. Hadley received her B.A. with Honors (1970) from Leeds University in England, her M.S. (1987) from Southern Connecticut State University, a M.S. in Teaching English to Speakers of Other Languages (1992) from Central Connecticut State University, and her Ph.D. (2000) from University of Reading, England. In a professional career spanning

over 30 years, Dr. Hadley began by teaching English as a second language in the private sector before moving into high school and college teaching. In 1994 she joined the faculty of the Department of English and Philosophy at Georgia Southern, and in 1997 she became a member of the faculty of Writing and Linguistics and was promoted to Associate Professor in 2003. During her tenure at Georgia Southern University, she received the CLASS Excellence in Scholarship Award and the First-Year Experience Instructor of the Year Award (2005). In addition to publishing pedagogical pieces on teaching English as a second language in *TESOL in Action* and *Modern English Teacher* and numerous conference presentations, she pursued her scholarly interest in crime fiction by publishing the book *British Women Mystery Writers* (2002) and co-editing a collection of essays on Minette Walters (2008). With her husband, she co-authored a series of mystery novels under the pen name of Mary Charles. During her 18 years at Georgia Southern, she served on more than 30 departmental, college, and University committees. A notable contribution to the profession came with her role for several years as co-chair for the Student Success in First-Year Composition Conference, a conference which brought high-school teachers and university faculty together to discuss student transition from secondary education to college; she also served the profession by Americanizing classical fairy tales for young ESL readers for Pearson Publishing. In recognition of her meritorious contributions and service to the department, college, University, and the profession, Dr. Mary Hadley is awarded the title of Associate Professor Emerita of Writing and Linguistics.

Dr. Janice H. Kennedy, Professor of Psychology, who is retiring December 31, 2012. Dr. Kennedy was educated at Georgia State University, earning a B.S., M.A., and a Ph.D. degree in developmental psychology. She came to Georgia Southern University in 1984, rising to the rank of professor in 1995. At the time of her retirement, she will have provided Georgia Southern University with 28 years of distinguished service. Dr. Kennedy is known for her high standards in teaching and has developed and taught 19 different courses during her career. Included among these are creative courses, such as *The Child in Historical Context*, that were part of the study abroad program. Dr. Kennedy has been a model colleague in her service, which includes chairing 11 faculty search committees at the departmental level, and service on college and university committees such as the Institutional Review Board. At a time when the University did not stress scholarship, Dr. Kennedy maintained a productive and ongoing research program that involved students. She supervised dozens of undergraduate and graduate students in their research on psychological development, including presentations of their work at professional conferences and publications in professional journals. Dr. Kennedy also chaired 12 masters' thesis committees and was a member of many others. In these efforts, she offered students a rich and in-depth understanding of psychological scholarship and the academic life. Her well-rounded work was recognized by the College of Liberal Arts and Social Sciences in 2008, which awarded her the Ruffin Cup, its highest honor. For her many notable contributions to the department, college, University, and profession, Dr. Janice H. Kennedy merits the title of Professor Emerita of Psychology.

Dr. Barbara A. Price, Professor of Quantitative Analysis, who is retiring on December 31, 2012. Dr. Price earned her Bachelor of Science degree from Grove City College (1969) and her Master of Science (1971) and Doctor of Philosophy (1973) degrees from Virginia Polytechnic Institute and State University. She began her academic career with teaching faculty appointments at New River Community College and Radford University. Her dual career marriage with husband Stan resulted in moves to faculty positions at Mississippi State University, Lynchburg College, and Winthrop University. At the time of her retirement, she will have given 16 years of distinguished service to Georgia Southern University. Joining the faculty at Georgia Southern in 1996, Dr. Price served as Professor and Chair of the Department of Information Systems and Logistics until 2001. At that time, she became Founding Director of the School of Information Technology—a post she held for two years. Since 2003, she has served as Professor of Quantitative Analysis and, for one year, also as Director of Student

Services. During spring 2011, Dr. Price served as a Fulbright Lecturer at the University of Debrecen, Hungary. In 2008, she participated in a Fulbright-Hays Team to the Czech Republic and Hungary. A prolific scholar, she has published over 50 refereed proceedings and journal articles. Additionally, Dr. Price has been an active member and leader in several professional organizations, including the Decision Sciences Institute and Association for Computing Machinery. Of particular note are leadership positions serving as an At-large Vice President of the Decision Sciences Institute; as an Associate Editor for the *Decision Sciences Journal of Innovative Education*, and as Chair of the Computing Accreditation Commission of ABET, Inc. Throughout her career, she has been active in the community through the Chamber of Commerce, Kiwanis, foreign mission trips, as well as other volunteer efforts. For all of these numerous and meritorious contributions to the department, college, University, profession, and community, Dr. Barbara A. Price is awarded the title of Professor Emerita of Quantitative Analysis.

Dr. Donald Neal Saye, Associate Professor of Writing and Linguistics, who retired July 31, 2012. Dr. Saye received his B.S. (1974) from Berry College, his M.A. in English (1978) from Georgia Southern College, and his Ed.D. (2002) in Curriculum Studies from Georgia Southern University, with the completion of his dissertation *More Than "Once Upon a Time": Fiction as a Bridge to Knowing*. In a collegiate teaching career spanning 24 years, Dr. Saye began teaching at Georgia Southern in 1988 as an instructor with a dual appointment in the departments of English and Developmental Studies. In 2001, Dr. Saye joined the faculty of Writing and Linguistics as an Assistant Professor; in 2005, he was promoted to Associate Professor. During his career at Georgia Southern, Dr. Saye was often recognized for the quality of his teaching—earning Georgia Southern University Professor of the Year in 1993 and 2010 (Georgia Southern's only two-time winner), receiving the Georgia Southern University Award for Excellence in Contributions to Instruction in 2001 and the Dorothy Smith Golden Award for Teaching Excellence from the Department of Writing and Linguistics in 2003, and being honored with the "Most Approachable Professor" Award from the Success-In-U Program in 1994 and the "Funniest Professor" Award, also from the Success-In-U Program in 1993. His scholarly activities included a wide variety of conference presentations and publications, on topics ranging from popular culture to pedagogical theory to effective reading practices in the classroom. Publications of note appeared in *Studies in American Culture* and *Journal of Critical Inquiry into Curriculum and Instruction*. Because of his success in the classroom, he was asked to be a guest lecturer or to lead a workshop by other faculty over 40 times. During his years of service at Georgia Southern, Dr. Saye served on over 30 departmental, college, and university committees, was a member of several doctoral committees, mentored new faculty, and served as a mediator to resolve conflicts. A notable contribution to the profession came with his role as co-chair for the Student Success in First-Year Composition Conference from 1999 to 2008, a conference which brought high-school teachers and university faculty together to discuss student transition from secondary education to college. In recognition of his meritorious contributions and service to the department, college, University, and profession, Dr. Neal Saye is awarded the title of Associate Professor Emeritus of Writing and Linguistics.

Dr. Ronald E. Shiffler, Dean and Professor Emeritus of the College of Business Administration (COBA), who retired July 31, 2012. Dr. Shiffler earned a Bachelor of Science in mathematics from the University of North Carolina at Greensboro, a Master of Science in mathematics from Bucknell University, a Master of Statistics and a Doctor of Philosophy in statistics (1980) from the University of Florida. At the time of his retirement, Dr. Shiffler provided 10 years of distinguished service as dean of the College of Business Administration, including almost five years' service also as the interim dean of the College of Information Technology. Dr. Shiffler held previous faculty positions at Georgia State University and the University of Louisville. Prior to joining the faculty at Georgia Southern, Dr. Shiffler was dean of the College of Business at Western Carolina University for six years. In his early academic career as a faculty member, Dr. Shiffler won numerous teaching awards, published over two dozen scholarly journal articles, and wrote two statistics textbooks. At Georgia Southern, he is credited with launching many new degree programs, including the University's first ever Doctor of Philosophy in logistics and supply chain management. He was an advocate of online education and led the development and introduction of online master's degrees in applied economics, accounting, computer science, and the Executive MBA. Dr. Shiffler served as lead dean for the Georgia WebMBA program, a consortium of six University System of Georgia institutions that jointly offer an online MBA degree. Under his leadership, the Georgia WebMBA program earned national and international recognition and rankings from leading internet media. Dr. Shiffler was active with AACSB, the international accrediting agency for business schools. He led three successful reaccreditations as dean and served on the AACSB's Initial Accreditation Committee, Accreditation Quality Committee, the AQ Bridge Program, and the Distance/Online Education Task Force. In addition, Dr. Shiffler served on over two dozen peer review teams for domestic and international business schools. Dr. Shiffler was committed to marketing and promoting COBA. Each week for 10 years, he wrote and distributed to over 6,000 subscribers the *Dean's Update*, an electronic newsletter that championed faculty accomplishments and COBA activities and included the ever-popular "fearless football forecast" in fall editions. With faculty help, he started and sustained efforts to contribute weekly columns to Savannah newspapers, headline a "Business Monday" segment on a local talk radio show, and produce a daily "Market Minute" radio spot that wrapped up the day's activities in financial markets. Partnering with the Downtown Statesboro Development Authority (DSDA), Dr. Shiffler helped create the City Campus and E-Zone on East Main Street. The partnership with the DSDA led to a COBA video show, Business Beat, which highlighted business activities in Statesboro and Bulloch County. In the community Dr. Shiffler served as chairman of the Statesboro-Bulloch County Chamber of Commerce, on the board of directors for the Coastal Regional Commission, and as president of the Southern Business Administration Association. For his many distinguished contributions to COBA, the University, the profession, and the community, Dr. Ronald E. Shiffler has earned the title of Dean and Professor Emeritus of the College of Business Administration.

HONORARY DEGREES AWARDED BY GEORGIA SOUTHERN UNIVERSITY

The Board of Regents approves the awarding of a highly-selective honorary degree, which is conferred by University System of Georgia institutions to recognize individuals of notable achievement in an academic field, the arts and letters, their

profession, or public service. Since 1996, Georgia Southern University has been privileged to confer Honorary Doctoral Degrees to the exceptional individuals listed below.

BETTY FOY SANDERS	<i>Doctor of Fine Arts</i>	August 11, 1996
THE HONORABLE CARL SANDERS	<i>Doctor of Laws</i>	August 11, 1996
ALLEN E. PAULSON	<i>Doctor of Science</i>	June 14, 1997
THE HONORABLE F. EVERETT WILLIAMS	<i>Doctor of Humane Letters</i>	December 8, 1997
JACKIE ANDERSON STRANGE	<i>Doctor of Letters</i>	June 14, 1998
THE HONORABLE ARTHUR GIGNILLIAT	<i>Doctor of Humane Letters</i>	December 19, 1998
WILLIAM FREEMAN	<i>Doctor of Letters</i>	May 8, 1999
EMMA KELLY	<i>Doctor of Fine Arts</i>	May 9, 1999
EUGENE M. BISHOP	<i>Doctor of Letters</i>	May 13, 2000
HALA MODDLEMOG	<i>Doctor of Letters</i>	May 5, 2007

College of Education
Jiann-Ping Hsu College of Public Health
College of Health and Human Sciences

9:00 A.M. Ceremony

ACKNOWLEDGMENTS

FACULTY MARSHALS

Jack N. Averitt College of Graduate Studies

JOHN R. DIEBOLT, Ph.D., *Associate Dean and Professor, Jack N. Averitt College of Graduate Studies*

MING FANG HE, Ph.D., *Professor, Curriculum, Foundations, and Reading*

College of Education

BRENDA G. CALLAHAN, Ph.D., *Assistant Professor, Leadership, Technology, and Human Development*

DEVON JENSEN, Ph.D., *Assistant Professor, Leadership, Technology, and Human Development*

Jiann-Ping Hsu College of Public Health

EVANS AFRIYIE-GYAWU, Ph.D., *Assistant Professor, Environmental Health Sciences*

JAMES H. STEPHENS, D.H.A., *Assistant Professor, Health Policy and Management*

College of Health and Human Sciences

JAMES L. MCMILLAN, Ed.D., *Associate Professor and Chair, Health and Kinesiology*

JOHN G. PEDEN, Ph.D., *Associate Professor, School of Human Ecology*

READERS

College of Education

KYMBERLY DRAWDY, Ph.D., *Associate Professor, Teaching and Learning*

JULIE G. MAUDLIN, Ed.D., *Associate Professor, Teaching and Learning*

College of Health and Human Sciences

HENRY A. EISENHART, Ph.D., *Professor, School of Human Ecology*

BARRY A. MUNKASY, Ph.D., *Associate Professor, Health and Kinesiology*

THE PLATFORM PARTY

BROOKS A. KEEL, Ph.D., *President*

LEONARD BEVILL, *President and Chief Executive Officer of Macon Occupational Medicine*

JEAN E. BARTELS, Ph.D., *Provost and Vice President for Academic Affairs*

RONALD J. CORE, Ed.D., *Vice President for Business and Finance*

SALINDA A. ARTHUR, M.S., *Vice President for University Advancement and President, Georgia Southern University Foundation*

TERESA E. THOMPSON, Ph.D., *Vice President for Student Affairs and Enrollment Management*

STEVEN C. BURRELL, Ed.S., *Vice President for Information Technology/Chief Information Officer*

CHARLES E. PATTERSON, Ph.D., *Vice President for Research and Economic Development and Dean, Jack N. Averitt College of Graduate Studies*

RUSSELL T. KEEN, B.B.A., *Vice President for Government Relations and Community Engagement*

THOMAS R. KOBALLA, JR., Ph.D., *Dean, College of Education*

A. BARRY JOYNER, Ph.D., *Dean, College of Health and Human Sciences*

R. GREGORY EVANS, Ph.D., *Dean, Jiann-Ping Hsu College of Public Health*

FREDERIC D. MYNARD, Ph.D., *Moderator, Faculty Senate*

VELMA S. BURDEN, Ed.D., *Registrar*

PROGRAM

*PROCESSIONAL	<i>Pomp and Circumstance</i> (Military March No. 1, Op. 39) by Edward Elgar Performed by: MICHAEL BRAZ, Ph.D., <i>Professor Emeritus, Music</i>
Macebearer	FREDERIC D. MYNARD, Ph.D., <i>Associate Professor, Mathematical Sciences</i>
INTRODUCTION OF THE PRESIDENT	PROVOST BARTELS
WELCOME	PRESIDENT KEEL
MEDITATION	DEAN EVANS
INTRODUCTION OF SPEAKER	DEAN JOYNER
COMMENCEMENT ADDRESS	MR. BEVILL
RECOGNITION OF EMERITUS STAFF AND FACULTY	PROVOST BARTELS
CONFERRING OF GRADUATE DEGREES	PRESIDENT KEEL DEAN PATTERSON DEAN EVANS
RECOGNITION OF HONOR GRADUATES	PROVOST BARTELS
CONFERRING OF UNDERGRADUATE DEGREES	PRESIDENT KEEL PROVOST BARTELS DEAN KOBALLA DEAN JOYNER
*ALMA MATER	ROBERT DASHAWN FIGUEROA, <i>Graduating Senior, Bachelor of Music, Music Education</i>
*RECESSIONAL	<i>Wedding Day at Troldhaugen</i> by Grieg Performed by: MICHAEL BRAZ, Ph.D., <i>Professor Emeritus, Music</i>

*AUDIENCE PLEASE STAND

We would like to thank the ROTC Cadets and other Georgia Southern University volunteers for their assistance with today's ceremony.

JACK N. AVERITT COLLEGE OF GRADUATE STUDIES

Doctor of Education

Educational Administration

Christie A. Dunham

B.S., Armstrong State College, 1991

M.Ed., Armstrong Atlantic State University, 1999

Ed.S., Georgia Southern University, 2004

Dissertation: *Principals Roles and Responsibilities in Technology Integration in Rural Georgia*

Major Professor: Linda Arthur, Ed.D.

Doctor of Education

Educational Administration

Tim M. Tilley

B.S.Ed., Auburn University, 1988

M.Ed., Auburn University, 1991

Ed.S., State University of West Georgia, 2002

Dissertation: *How Georgia Elementary School Principals Manage Difficult Teachers*

Major Professor: Linda Arthur, Ed.D.

Doctor of Education

Educational Administration

Todd Douglas Veland

B.A., University of South Alabama, 1998

M.A., University of Alabama-Huntsville, 2001

Ed.S., Georgia Southern University, 2006

Dissertation: *A Study of Dispositions of Transformational Leaders in Georgia High Schools*

Major Professor: Linda Arthur, Ed.D.

Doctor of Education

Educational Administration

Pamela Jones McKinnon

B.S., Georgia Southern College, 1988

M.Ed., Georgia Southern University, 1992

Ed.S., Georgia Southern University, 1994

Dissertation: *Academic Optimism of Schools and Student Achievement*

Major Professor: Paul M. Brinson, Ed.D.

Doctor of Education

Educational Administration

James George Pulos

B.S., University of Maryland, 1997

M.S., Troy State University, 1999

Ed.S., NOVA Southeastern University, 2007

Dissertation: *Principals and the Professional Victim Syndrome*

Major Professor: Paul M. Brinson, Ed.D.

Doctor of Education

Educational Administration

Vern Lenardo Mamon

B.S., Grambling State University, 1977

M.A.T., Grambling State University, 1987

Ed.S., Troy State University, 2004

Dissertation: *An Analysis of Secondary School Teachers' Perceptions of Block Scheduling*

Major Professor: Lucindia Chance, Ed.D.

Doctor of Education

Educational Administration

Daniel William Caldwell

B.B.A., Armstrong State College, 1976

M.Ed., Georgia Southern University, 2000

Ed.S., Georgia Southern University, 2007

Dissertation: *Educating Gifted Students in the Regular Classroom: Efficacy, Attitudes, and Differentiation of Instruction*

Major Professor: James E. Green, Ph.D.

Doctor of Education

Educational Administration

Leslie Carole Forcina

B.A., Villanova University, 1988

M.Ed., Temple University, 1989

Ed.S., Georgia Southern University, 2004

Dissertation: *Social Emotional Competence and Teacher Stress*

Major Professor: James E. Green, Ph.D.

Doctor of Education

Educational Administration

Sharon Delaney Swift

B.S.Ed., University of South Florida, 1992

M.S., Eastern Kentucky University, 1998

Ed.S., Augusta State University, 2009

Dissertation: *The Relationship of Select Admissions Criteria to Pre-Licensure Requirements in a Graduate Degree Program in Occupational Therapy*

Major Professor: James E. Green, Ph.D.

Doctor of Education

Educational Administration

Eugene Walker

B.S.E.E.T., Savannah State College, 1985

M.Ed., Lesley University, 2004

Ed.S., Albany State University, 2005

Dissertation: *Principal's Role in a Teacher Induction Program: A Collective Case Study*

Major Professor: James E. Green, Ph.D.

Doctor of Education

Educational Administration

Karen Durrence Bland

B.S.Ed., Georgia Southern College, 1987

M.Ed., Georgia Southern College, 1990

Ed.S., Georgia Southern University, 1992

Dissertation: *Relationship of Collaborative School Culture and School Achievement*

Major Professor: Jason LaFrance, Ed.D.

Doctor of Education

Educational Administration

Malinda B. Cobb

B.A., Newberry College, 1995

M.Ed., Georgia State University, 2000

Ed.S., Augusta State University, 2005

Dissertation: *Examining the Association between Teacher Political Efficacy and Educational Policy Engagement*

Major Professor: Jason LaFrance, Ed.D.

**Doctor of Education
Educational Administration**

Rodney Jay Williams
B.A., Benedict College, 2000
M.Ed., University of Oklahoma, 2002
Ed.S., Nova Southeastern University, 2004
Dissertation: *High School Administrators' Perception of the Effectiveness of Professional Development*
Major Professor: Jason LaFrance, Ed.D.

**Doctor of Education
Educational Administration**

Kimberly Ann Robinson
B.S., Georgia Southern University, 1995
M.H.S.A., Georgia Southern University, 2004
Dissertation: *Institutional Factors Contributing to the Under-Representation of African American Women in Higher Education: Perceptions of Women in Leadership Positions*
Major Professor: Brenda Marina, Ph.D.

**Doctor of Education
Educational Administration**

Charles R. Hall, Sr.
B.S., Medical College of Georgia, 1994
M.S., Medical College of Georgia, 1999
Dissertation: *Factors Associated with Adult Literacy Student Outcomes in Campus-based versus Community-based Programs*
Major Professor: Teri Denlea Melton, Ed.D.

**Doctor of Education
Educational Administration**

Jacquelyn Leigh Galphin Mesco
B.F.A., University of North Texas, 1981
M.Ed., Armstrong Atlantic State University, 2001
Ed.S., Georgia Southern University, 2003
Dissertation: *The Relationship between Job Satisfaction and Montessori Training in Public Montessori Teachers*
Major Professor: Teri Denlea Melton, Ed.D.

**Doctor of Education
Educational Administration**

Charity Clare Roberts
B.S.Ed., Georgia Southern University, 1993
M.Ed., Georgia Southern University, 1997
Ed.S., Georgia Southern University, 2002
Dissertation: *Parent Perceptions of Georgia Special Needs Scholarship*
Major Professor: Teri Denlea Melton, Ed.D.

**Doctor of Education
Educational Administration**

Veronica Lawrence
B.S., Paine College, 1987
M.Ed., Brenau University, 1996
Ed.S., Troy State University, 1997
Dissertation: *An Exploratory Study of Principals' and Teachers' Perceptions of School Work Conditions*
Major Professor: Susan B. Trimble, Ed.D.

**Doctor of Education
Educational Administration**

Karen Waters Manahan
B.A., Berry College, 1984
M.A., Adams State College, 1989
Ed.S., Georgia Southern University, 2003
Dissertation: *Student Achievement, Suspensions, and African American Males*
Major Professor: Denise M. Weems, Ph.D.

**Doctor of Education
Curriculum Studies**

Janice Lynn Reyes
B.B.A., Columbus State University, 1997
M.Ed., Brenau University, 2007
Ed.S., Georgia State University, 2009
Dissertation: *Equal or Not? An Exploration of Eighth-Grade Students' Experience of Algebra*
Major Professor: Yasar Bodur, Ph.D.

**Doctor of Education
Curriculum Studies**

Gwyneira Yvette Dixon Ledford
B.S.Ed., Georgia Southern University, 2002
M.Ed., Georgia Southern University, 2005
Dissertation: *The Myth of Black Inferiority: A Dogmatic Transference of Trauma*
Major Professor: Daniel Chapman, Ph.D.

**Doctor of Education
Curriculum Studies**

Michael James Ryan
B.M., State University of New York at Postdam, 1982
M.M., University of Georgia, 1986
Dissertation: *Moments When the Weak Gained Ground: Viral Video as a Curriculum of People*
Major Professor: Daniel Chapman, Ph.D.

**Doctor of Education
Curriculum Studies**

Jenny Rebecca McClintic
B.S.Ed., Georgia Southwestern College, 1993
M.Ed., Georgia Southwestern State University, 1996
Ed.S., Georgia Southwestern State University, 1998
Dissertation: *Empowering Students with Asperger's*
Major Professor: Grigory Dmitriyev, Ph.D.

**Doctor of Education
Curriculum Studies**

Robin Williamson Tyson
B.S., Valdosta State College, 1989
M.S., Troy University, 2006
Dissertation: *Revitalizing Indigenous Languages and Culture and Preserving Indigenous Knowledge Through Storywork*
Major Professor: Ming Fang He, Ph.D.

**Doctor of Education
Curriculum Studies**

Laura Jean Rychly
B.S.Ed., University of Georgia, 2004
M.Ed., University of Georgia, 2005
Dissertation: *Beyond the Death of the Teacher: Reimagining Life in Classrooms through Receptive Discourse*
Major Professor: Julie G. Maudlin, Ed.D.

**Doctor of Education
Curriculum Studies**

Domenica Devine
B.S., California State University, 1996
M.S., University of California, 2003
Dissertation: *Curriculum Circus: Juggling Curriculum, Science, and Circus*
Major Professor: Marla B. Morris, Ph.D.

**Doctor of Education
Curriculum Studies**

Mark Eric Linsky
B.A., West Virginia State University, 1991
M.A.T., Marshall University, 1994
Ed.S., Georgia Southern University, 2005
Dissertation: *Jung at Heart: A Meditation on Illness, Yoga,
Jung, and Curriculum*
Major Professor: Marla B. Morris, Ph.D.

**Doctor of Education
Curriculum Studies**

Leslie Burrell-Sahl Nissen
B.S., Georgia Southern College, 1976
M.Ed., Georgia Southern College, 1980
Dissertation: *Curriculum and the Life Erratic: The Geographic
Cure*
Major Professor: Marla B. Morris, Ph.D.

**Doctor of Education
Curriculum Studies**

John Lawrence Sutlive
B.A., University of Georgia, 1987
M.Ed., Georgia Southern University, 1993
Dissertation: *An Analysis of the Culture of Consumption and
the Commercialization of School*
Major Professor: Marla B. Morris, Ph.D.

**Doctor of Education
Curriculum Studies**

Deborah Burnette
B.S., Armstrong State College, 1992
M.S., Armstrong Atlantic State University, 1996
Dissertation: *Casting Minority Gifted Students: The Pedagogical
Impact of Cinema on the Culture of Schooling*
Major Professor: John A. Weaver, Ph.D.

**Doctor of Education
Curriculum Studies**

Carol Lynn Denis
B.S.Ed., Armstrong State College, 1992
M.Ed., Georgia Southern University, 1996
Ed.S., Georgia Southern University, 1999
Dissertation: *Attention Deficit Hyperactivity and
Bronfenbrenner's Ecology of Human Development*
Major Professor: John A. Weaver, Ph.D.

**Doctor of Education
Curriculum Studies**

Patra Mara Rickman
B.A., Georgia State University, 1998
M.Ed., Armstrong Atlantic State University, 2006
Dissertation: *The Post Modern Prometheus: Are we Bio-
Engineering our Children?*
Major Professor: John A. Weaver, Ph.D.

**Doctor of Education
Curriculum Studies**

Anita Lumpkin-Barnett
B.S.Ed., University of Georgia, 1984
M.Ed., University of Georgia, 1985
Ed.S., Piedmont College, 2006
Dissertation: *Rejecting Societies Mirror Image: Identifying
Factors that Attribute to Academic Success of African
American Males*
Major Professor: Meca R. Williams-Johnson, Ph.D.

JIANN-PING HSU COLLEGE OF PUBLIC HEALTH

**Doctor of Public Health
Biostatistics**

Macaulay Sunday Okwuokenye
B.Ph., Obafemi Awolowo University, 2003
M.P.H., Georgia Southern University, 2009
Dissertation: *Size and Power of Tests of Hypotheses on
Parameters when Modeling Time-to-Event Data with the
Lindley Distribution*
Major Professor: Karl E. Peace, Ph.D.

**Doctor of Public Health
Community Health Behavior and Education**

Cheryl Lynn Robinson Gaddis
B.S. Spelman College, 1995
M.P.H., Mercer University School of Medicine, 2001
Dissertation: *Do the Opportunities Offered during the
School Day Provide the Recommended Physical Activity
Levels for Children? An Assessment of the Upson County
Pre-Kindergarten and Elementary School Physical Activity
Occurrences*
Major Professor: Moya Alfonso, Ph.D.

**Doctor of Public Health
Community Health Behavior and Education**

Joy Darlene Goens Thomas
B.S., Florida State University, 2001
M.S.P.H., University of North Carolina at Charlotte, 2009
Dissertation: *Evaluating the Public Health Impact of a Faith-
Based Diabetes Prevention Program: A Mixed Methods
Application of the RE-AIM Framework*
Major Professor: Moya Alfonso, Ph.D.

**Doctor of Public Health
Community Health Behavior and Education**

Emmanuel Nii Okai Clotley
B.Sc., Kwame Nkrumah University of Science and
Technology, 1992
M.Div., International Leadership University, 1996
M.Th., Africa International University, 2003
M.P.H., University of Iowa, 2008
Dissertation: *African American Grandparents Raising
Their Grandchildren in Rural Areas: A Phenomenological
Investigation in South Georgia*
Major Professor: Moya Alfonso, Ph.D.

**Doctor of Public Health
Community Health Behavior and Education**

Nandi Aliya Marshall
B.A., Spelman College, 2004
M.P.H., East Stroudsburg University, 2006
Dissertation: *Expanding the Understanding of the Social
Determinants of Health to Support Community Readiness
for Change*
Major Professor: Carolyn D. Woodhouse, Ed.D.

**Doctor of Public Health
Public Health Leadership**

Mary King Mathis
B.A., Wesleyan College, 1998
M.P.H., Mercer University School of Medicine, 2000
Dissertation: *The Influence of Federally Qualified Health
Center Access on Ambulatory Care Sensitive Chronic
Conditions*
Major Professor: Gerald Ledlow, Ph.D.

**JACK N. AVERITT COLLEGE
OF GRADUATE STUDIES**

Education Specialist

Laticia Janel Adams
Lesla Marcequette Brown
Tammy LaWanna Brown
Anna Barre Campbell
Kiffiny Ward Carter
Kristen Rand Cerny
Jamita Lynn Cobb
Tiffany Nicole Davis
Renanda Wood Dear
Richard Kevin Edgeworth
Amy Elizabeth Ediger
Jessica Lynn Ehrlich
Trina Ann Galvin
Aida M. Gonzalez-Gerst
Kera G. Grant
Cynthia M. Griffin
Felicia Evonne Harley
Eric Wayne Heady
Ashley Sheneese Hill
Krasandra Smallwood Holmes
Larry Vernon Johnson
Ashley Elizabeth Byrd Kittrell
Jessica Ann Loiacono
Carla D. MacDonald
Laura Liles Marshall
Lauren Webb Masee
James Du'von McCarter
Tracy S. McGarity
Juanita Denise Mitchell
Tahiri'h Althea Pleasant
Ansley Kessler Ray
Lana Housend Rogers
Jon F. Roy
Debbie Carol Rozier
Nicholas Ryan Smith
Jessica Lynn Stephenson
Penny Teachey-Gary
Michael S. Terrell
Roderick Orlando Walker
JaPrita Matice Washington
Miranda Claire Willingham
Sharon Elizabeth Worsham
Tosha Reneé Wright
Waukita Benetrice Wright

Master of Arts in Teaching

Brian Wesley Dotson
Jessica Nicole Heilman
Georgia Cox Starling
Rachel Renee Stroman

Master of Education

Julia Gillespie Anderson
John Carter Angelle
Leah Kathryn Beasley
Tina Sapp Benner
Rayner Mathias Bettendorf
Walter Bryan Boone
Toni Maria Bowers
Caroline Janas Bradford
Candace Marie Brookshire
Sonya D. Burroughs
Stacy Eujeania Calhoun
Brandi Nichole Cameron
Ashley Erin Campbell
Jennifer Chris Castellanos

Michael Andrew Chambless
Heather Renee Cheek
Crystal Michele Clark
Alba Cobos
Megan L. Collins
Effie Alanna Boatwright Cowart
Aubrey Ann Cox
Christina M. Curley
Rena Mae Davis
Nalanta Cherie Dawsey
Angela Rebecca Denney
Georgia Gray Gibbs Dess
Kaylie Kathryn Dewrell
Ayoko Dogbe
Angel Nicole Douglas
Jaclyn Marie Esqueda
Brittany Nicole Fine
Tami M. Fleming
Margaret Corinne Flynt
Marla Senn Foskey
Ashley Elizabeth Friend
Whitney Len Gale
Sarah Bennett Garrison
Vanessa M. Gilbert
Heather Lea Gillespie
James Douglas Goss
Celia Bowen Gossett
Jeremiah Thomas Graham
Erika Lanita Hagan
Kayleigh Dawn Harkins
Amanda Fleming Harris
Jamie Alexander Helms
Mitzi Bond Helms
Lisa Ann Hendrix
Wendy Michele Hester
Leslie E. Hicks
Christopher Adam Hogue
Jacob Tyler Horne
Suzette Monica Hosler
Jenna Leigh Hyers
Christy Stanfill Jacobs
Talondria Wynn Jenkins
Quintara Ashley Jernigan
Ashlea S. Johnson
Natalie Maria Johnson
William Thomas Johnson, Jr.
Kimberly Ann Johnston
Diana Stanley Jones
Christopher Leon Kahley
Stephen Justin Keith
Kathryn Parr Kelley
Geoffrey Lee Kennedy
Amber Joy Kestler
Gicorey T. Keys
Melanie Walden Kilgore
Jill Parris Lang
Jeffrey Scott Lavinder
Felicia Hardin Lewis
Elisa Palmer Long
Angela D. Lormis
Shalisa Marie Love
M. Kate Maine
Patrycja Anna Manning
Whitney Tankersley Manz
Stephen R. Martell
Kristen Aguilar Maxwell
Lillie Henry McPhee
Lesley J. Metts
Julie L. Morris
Debra Ann Morris-Motley

Terri L. Mylander
Genie Leigh Nall
Alisha Farrand New
Jordan L. Northenor
Jessica Nicole Oglesby
Kimberly Amber O'Neill Stoy
Christy K. Orr
Christopher James Owens
Jessica Lynn Owens
Lisa Lynn Paez
Bhavika S. Patel
Kimberly Darcell Perez
Lindsey Sutton Pilgrim
Ginger Leanne Pittman
Robert Corey Pittman
Alyssa Hope Prater
Leigh Elizabeth Prosser
Brandi Lynn Purser
Takiyyah Tia Ra'Aid
Fabrian A. Rankine
Meghan Lynn Roberts
Connie Hinson Ryals
Jesse David Scott
Jacqueline Sherlin
Erica Renee Shirley
Steven Alden Simpson
Joyce Ann Smith
Rebecca Emily Smith
Heidi Jo Stevens
Rachel Thigpen Stewart
Ashley Allen Summers
Amy Kathryn Tapley
Stephanie Annette Tatum
Amber Nikole Taylor
Caramy Adrienne Taylor
Kelly Taylor
Brittany Lauren Thomas
Pamela Regina Thomas
Jill Elaine Tomberlin
Lacey Nicole Toothman
Justin Trifon
Laine Paige Vilardi
Linda McPhearson Walker
Scarlett McIntosh Walker
Melinda Marie Walsh
Erin Paige Warren
Justin Robert West
Deidre Marianna White
Jennifer Nicole Whitlow
Heather Ann Williams
Zelonia Lotoya Alfrieda Williams
Cynthia Suzanne Woods
Whiteford Baker Woodward IV
Sandra Wooten
Qiana Odette Worlds
Mary Catherine Young

Master of Science

Justin Seth Barnes
Megan Bragg Bullock
Eric J. Cuevas
Lisa Marie Di Benedetto
Emily Nicole Edwards
Charter Edward Foster
Benjamin C. Freakley, Jr.
James Joseph Gallagher
James Thomas Gleissner
†Michael Antonio Gordon
Zachary Scott Houston
Charles William Jones

† *Posthumous*

Joseph Lemuel Moore
Austen Lee Peacock
Amber Camille Porter
Claude James Stiltz II
Hollis Lynn Theard

JIANN-PING HSU COLLEGE OF PUBLIC HEALTH

Master of Healthcare Administration

Jimmie Lee Fowler III
Karishma Jigar Patel

Master of Public Health

Hasan Khalid Al-Sayegh
Kimberly Jean Curtis
Stephanie Marie Goff
I-sa Ni-kole Jenkins
Ebonee Denise Kirkwood
Asa Yvette Renfroe
Erica Hunter Wallace

COLLEGE OF EDUCATION

Bachelor of Science in Education

Leaha Michelle Adams
Samantha Paige Anderson

Summa Cum Laude
Amanda Kathleen Arasmith
Summa Cum Laude

University Honors Program Scholar

Denis Baltazar Avendano
Jillian Brooke Becton
Jenny Elizabeth Bowen
Tiffini Nicolle Bradley
Maureen Teresa Breen
Cum Laude

Richard Trent Brown
Cum Laude

Morgan Rae Callaway
Keauna Nicole Carlton
Kayla Elizabeth Claxton
Dently Tylor Crews
Lindsay Michelle Crosby
Bennett Richardson Curtis
Suzanna Marie Dann
Keisha Latrelle Davis
Caroline Elizabeth Dean
Richard Christopher Denoia
Valerie Johnson Douglas
Alexandria C. Earls
Miranda D. Edenfield
Brittney Vaughn Evors
Erika Danielle Fulton
Jessie Tamara Grier
Jenna Allyson Gutknecht
Emily Ann Halverson
Magna Cum Laude
Chase Patrick Hartman
Bethany Noel Hattaway
Sarah Elizabeth Hibbard
Carly Melissa Horton
Stephanie Brooke Jeffers
Magna Cum Laude
Wonda Smith Jenkins
Elisia Claire Jennings
Abigail Renee Johnson
Rachel Danielle Jones
Kyle Douglas Keener
Cum Laude
Charles Matt Kempton

James David Kirkland III
Laurie Michele Kutner

Magna Cum Laude

Rachel Hope Lanter
Magna Cum Laude

Kelly Ann LaSala
Cum Laude

Elizabeth M. Love
Amanda Marie Marks

Magna Cum Laude

Brittani Nicole Martin
Magna Cum Laude

Alison Marie Mathis
KeErica Deshawn Matthews

Jessica Brooke McDaniel
Corrie Lynn McIlrath

Ashley Chantell McKenzie
Ellen Hogan Meier

Vanessa Elizabeth Melton
Brianna Nicole Moody

Michelle Christine Newbold
Cum Laude

Savannah Evon Norman
Summa Cum Laude

Joshua Lance Payne
Emily Kate Pedrick

Cum Laude

Akeyla Marie Peele
Ashlei' Boni'que Perkins

Amber Michelle Pollette
Elizabeth Ann Powell

Marla Erin Price

Summa Cum Laude
David Randall Pritchett

Lindsay Jordan Purvis
Cum Laude

Anna Jordan Ray
Chelsea Lynn Reczek

Jennie Rae Register
Danielle Elizabeth Rockel

Elizabeth Wren Rucker
Magna Cum Laude

Sarah Ann Sellers
Allison Ree Steinhuis

Cum Laude
Emmitt Chesley Taylor

Magna Cum Laude
Rachel Linette Taylor

Cleyon Russell Turner
Kelli Elizabeth Twigg

Ciara Briana Tyce

James Vessels

Cum Laude

Derek Von Waldner

Diandra Patrice Walker

Soukeyna Danielle Walker

Laura Lynn Wells

Bonnie Jean Wetherington

Siterro Anreka Wheeler

Stacey E. Wilburn

Dale Steven Wilson

Kayla Nicole Wilson

Kristin Leigh Windham

Quintaya Kierra Womble

COLLEGE OF HEALTH AND HUMAN SCIENCES

Bachelor of Science

Cornelius Adebiyi Adu

Lidija Ahmetovic

Paola Andrea Aldana

Summa Cum Laude

Matthew Brandon Anderson

Anthony Carnell Ashley

Nathan D. Baker

Mary Katherine Balch

Sarah Daisy Boarman

Kenderrick Marquise Bonner

Corey Lee Brown

Chicarra Telia Burns

Bryan William Bush

Jeon Latrice Carter

Dominique Kristen Charles

Christine Catherine Chianumba

Janelle Samantha Clarke

William Frazier Clement

Paul David Gerard Cobb

Abbye Leigh Coody

Spencer Thomas Cornelia

Patricia Ann Counce

Leah Catherine Crooke

Courtney Lynn Dahlin

Gina Dorothy D'Angelo

Zachary Michael Darr

Caitlyn Alisa Davidian

Daniel Thomas Dixon

Jessica Lynne Dixon

Shawn Richard Donalty

Catina Maria Drew

Dion Lynnard Dubose

Daniel D. K. Edwards

Hanna Kaye Ennis

Cum Laude

Markus Deon Farmer

Michael Earl Flen

Dominique Sierra Francis

Malia Angelic Fredrick

Holly Duncan Fritz

Courtney Michelle Glenn

Stephanie Ann Halvorsen

Courtney Michelle Hardy

Kevin Andrew Harrington

Porsha La'Shawn Hatter

Megan Grace Herrin

Macie Lauren Hinson

Glen Edgar Hodges II

Joshua Mark Horton

Jeremy Lee Hughes

Nelson Osaremen Igbinoia

Christina Nicole Ingle

Emily Kaitlynn Jeziorski

Ashlee Lauren Johnson

Jessica Ravin Johnson

Megan Elizabeth Jones

Miles Antwan Judson

Cameron Kashani

Kelsey Crawford Kerr

Kristy Alice King

Jessica Sarah Layfield

Zakiya Shenita Lescott

Sara Emily Levy

Mary Elizabeth Lewis

Gary James Mata

Stacey Alexis McCalmon

Alexander McCray

Meagan Danielle McGahee

Brian McKesson

Lauren Marie Mitchell

Cum Laude

Melanie C. Moiso
Sarah Elizabeth Moore
Magna Cum Laude
Meghan Cory Morgan
Jonathan Matthew Moser
Robert William Murdock
Stephanie Alexandria Nall
Miranda Marie Newsome
Andreea Nichole Noah
Alison Shirley Parham
Taylor Ryan Parkerson
Brittney Paige Peurifoy
Alicia Connie Pierce
Patricia Lee Polito
Katie Elizabeth Pollard

Magna Cum Laude
Melissa René Price
Caitlan Marie Pursley
Rebecca Leigh Rawski
Magna Cum Laude
Tamia Shea Rhodes
Patrick Sean Robertson
Adam James Rooks
Madden Jean Sandlin
Cum Laude

Sandee Addison Santee
Wesley Joseph Schlomer
Eric Daniel Schroff
Nicole Sharda' Simmons
Hannah Alicia Smith
Jane Elizabeth Smith
Melissa Kay Smith
Olivia Barbara Stima
Magna Cum Laude
Andrew William Stoneking
Branko Alois Stropnik
Matthew Jon Tanner
Amanda Jean Taylor
Jason David Taylor
Lindsey Jean Taylor
Brittne' Tiara Thomas
Lindsey Marissa Thompson
Tyler Matthews Thompson
Christopher Dwayne Walker
Natalie Anne Walton
Linsy Brooke West
Whitney Sierra Westbrook-Haynes
Matthew John Wilson
Alaina Brooke Wood

Bachelor of Science in Health Science

Jasmine Carmel Anderson
Kathleen Torri Michelle Archey
Magna Cum Laude
Tiffany N. Blake
Vivian Gail Bragg
Ryan Elizabeth Brems
Kayla Brooke Conklin
Teidra Andale Currence
Tyler Aryana Denson
Paige Nicole Hicks
Cum Laude

Candace Janelle Jackson
Janay LaShaunda Johnson
Magna Cum Laude
Matthew Gregory Martin
Monica Patrice McKenzie
Dominic Ken McIlw
Monique Lee Monreal
Komal Bharat Patel

Ashlee Lynn Roberson
Bryan Krieg Thomas
Lauren Elizabeth Townson
Erika Frances Whitters
Delya L. Williams
Jerrica Monea Williams
Jamesia Shanae Wright

Bachelor of Science in Kinesiology

Peter Oluwafemi Ayoade
Colby Dennis Barthelemy
William Anthony Brinson
Philip Vincent Benjamin Campbell
Rudi Diana Carcaterra
Ronald Jamel Cooper
Jameson Tyler Croft
Brooke Allegra Crum
Kevin Je'vonn Felton
Bailey Cooper Flynn
Bernard Eric Green, Jr.
Brendon Phillip Hall
Cum Laude

Joseph Ashton Hall
Ashley Rashun Johnson
Franklin Demarus Jones
Rebecca Leah Kiesel
Adrian Christopher Kinsey
Taylor Charles Larson
Cum Laude

David Randall Maxwell
Brittney Rolanda McCray
Cass Michael Miloni
Asa Gordon Mitchell
Jodie Lynn Myers
Arron Todd Ocheltree
Phillip Grayson Osborne
Jonathon David Phillips
Ethan Bryan Robinson
Adam Christopher Sauers
Anna Lynn Treadway
Cum Laude
Claire Hannah Wilcher
Ashley Roshella Williams
Allison Marie Wilson
Richard Dagan Zeitz-Holland

Bachelor of Science in Nursing

Chelsea Elizabeth Allen
Jodi Stone Baxley
Anna Mitchelline Bookhardt
Shaina Elyse Booze
Erica LaDonna Brantley
Cum Laude
Shana Blake Bryant
Kimberly Lacole Burns
Constance Michelle Chambers
Nijah Alish Chapman
Cum Laude
Meredith Kay Clark
Peggy Morris Corbin
Ivie Marie Davis
Jennifer Mallonee Dixon
Kimberly Nicole Dominy
Katie Christine Durden
Cum Laude

Caitlin Kelly Fair
Cum Laude
Kylie Brooke Floyd
Adrienne Elmore Graham
Keisha Elizabeth Reina' Green

Reneé Shawnta Green
Kayla Renee Grubbs
Rebecca Ann Hensey
Magna Cum Laude
Shamon Richelle Hill
Shane Tyler Hill
Susan J. Hutchinson
Karen Teresa Iacino
Allison Kay Ingle
Lynsey Amanda Johnson
Magna Cum Laude
Michelle M. Johnson
Summa Cum Laude
Toni Bradley Joiner
Heather Frances Jones
Laura Danielle Josey
Shams M. Kalaani
Cum Laude
Haley Caroline Kaufman
Katherine Nicole Kinard
Magna Cum Laude
Elisabeth Ann Lehman
Cum Laude
Allison Loree Lumsden
Ivie Olivia Manning
Jennifer Mejia
Shelley L Mills
Murphy Elise Monaghan
Magna Cum Laude
Rachel Ann Oglesby
Magna Cum Laude
Kailyn Anne O'Shaughnessy
Summa Cum Laude
Carolina Palacio
Anna Elizabeth Patton
Ashby Brooke Perry
Sarah Elaine Perry
Valeria Elaine Prigeon
Cum Laude
Sarah Nanette Rice
Cum Laude
Heather Lane Riggs
Magna Cum Laude
Lindsey Paige Rountree
Kamila Renee Ryals-Brinson
Rachel Ane Schnorr
Cum Laude
Deanna N. Shuman
Victoria Elise Steele
Benjamin Jonathan Strozzo
Priscilla Ho Yee Tang
Cum Laude
Leslie A. Teston
Afton Maria Updike
Magna Cum Laude
Rebekah G. Valk
Summa Cum Laude
Taylor Marie Watson-Thompson
Cum Laude
Victoria Josie Boma Webb
Magna Cum Laude
Daniel Hugh West
Rickia Shardea' Williams

Allen E. Paulson College of Engineering and Information Technology
College of Business Administration
11:00 A.M. Ceremony

ACKNOWLEDGMENTS

FACULTY MARSHALS

Jack N. Averitt College of Graduate Studies

Center for International Studies

Allen E. Paulson College of Engineering and Information Technology

College of Business Administration

FRANK J. GOFORTH, D. Engr., *Associate Professor, Electrical Engineering*

M. JILL LOCKWOOD, J.D., *Professor, School of Accountancy*

GLYNN T. ELLIS, Ph.D., *Instructor, International Studies*

DARIN H. VAN TASSELL, Ph.D., *Associate Professor, International Studies*

ROCIO ALBA-FLORES, Ph.D., *Assistant Professor, Electrical Engineering*

CHRISTOPHER A. KADLEC, Ph.D., *Associate Professor, Information Technology*

TIMOTHY D. CAIRNEY, Ph.D., *Associate Professor, School of Accountancy*

DONNA K. FISHER, Ph.D., *Associate Professor, Finance and Economics*

READERS

Allen E. Paulson College of Engineering and Information Technology

College of Business Administration

MUJIBUR KHAN, Ph.D., *Assistant Professor, Mechanical Engineering*

JOHN R. O'MALLEY, JR., Ph.D., *Assistant Professor and Associate Dean, College of Engineering and Information Technology*

JOHN HOWARD BROWN, Ph.D., *Associate Professor, Finance and Economics*

BARBARA A. PRICE, Ph.D., *Professor, Management*

THE PLATFORM PARTY

BROOKS A. KEEL, Ph.D., *President*

FRANK SIMMONS III, Ph.D., P.E., *Structures Staff Scientist, Technical Fellow Gulfstream Aerospace*

JEAN E. BARTELS, Ph.D., *Provost and Vice President for Academic Affairs*

RONALD J. CORE, Ed.D., *Vice President for Business and Finance*

SALINDA A. ARTHUR, M.S., *Vice President for University Advancement and President, Georgia Southern University Foundation*

TERESA E. THOMPSON, Ph.D., *Vice President for Student Affairs and Enrollment Management*

STEVEN C. BURRELL, Ed.S., *Vice President for Information Technology/Chief Information Officer*

CHARLES E. PATTERSON, Ph.D., *Vice President for Research and Economic Development and Dean, Jack N. Averitt College of Graduate Studies*

RUSSELL T. KEEN, B.B.A., *Vice President for Government Relations and Community Engagement*

WILLIAM H. WELLS, Ph.D., *Dean, College of Business Administration*

W. BEDE MITCHELL, Ed.D., *Dean, Henderson Library and University Librarian*

MOHAMMAD S. DAVOUD, Ph.D., P.E., *Dean, College of Engineering and Information Technology*

FREDERIC D. MYNARD, Ph.D., *Moderator, Faculty Senate*

VELMA S. BURDEN, Ed.D., *Registrar*

PROGRAM

*PROCESSIONAL	<i>Pomp and Circumstance</i> (Military March No. 1, Op. 39) by Edward Elgar Performed by: MICHAEL BRAZ, Ph.D., <i>Professor Emeritus, Music</i>
Macebearer	FREDERIC D. MYNARD, Ph.D., <i>Associate Professor, Mathematical Sciences</i>
INTRODUCTION OF THE PRESIDENT	PROVOST BARTELS
WELCOME	PRESIDENT KEEL
MEDITATION	DEAN MITCHELL
INTRODUCTION OF SPEAKER	DEAN DAVOUD
COMMENCEMENT ADDRESS	DR. SIMMONS
RECOGNITION OF EMERITUS STAFF AND FACULTY	PROVOST BARTELS
CONFERRING OF GRADUATE DEGREES	PRESIDENT KEEL DEAN PATTERSON
RECOGNITION OF HONOR GRADUATES	PROVOST BARTELS
CONFERRING OF UNDERGRADUATE DEGREES	PRESIDENT KEEL PROVOST BARTELS DEAN DAVOUD DEAN WELLS
*ALMA MATER	ROBERT DASHAWN FIGUEROA, <i>Graduating Senior, Bachelor of Music, Music Education</i>
*RECESSIONAL	<i>Wedding Day at Trolldhaugen</i> by Grieg Performed by: MICHAEL BRAZ, Ph.D., <i>Professor Emeritus, Music</i>

*AUDIENCE PLEASE STAND

We would like to thank the ROTC Cadets and other Georgia Southern University volunteers for their assistance with today's ceremony.

**JACK N. AVERITT COLLEGE
OF GRADUATE STUDIES**

Master of Accounting

Stacie W. Avery
Isaac Andrew Bell
William Blake Bloser
Archie Lloyd Bransford
Shannon Rose Brownlee
D'Angelo K. Charlton
Jacob Mitchell Crow
Grant Hamilton Davis
Tyrell Joseph Dyson
Jacob Pitts Ellington
Joshua Thomas Fox
Stanton Kathleen Harrell
Qingqing Liu
Richard Ellis Minshew
Wing Yan Mok
Adam James Powers
Colin Brent Reid
Joshua Aden Rich
Morgan Marie Rowe
Jonathan Alan Rudolph
Benjamin Lane Shepherd
Jessica Ann Williams
Meagan Brooke Williams
Yue Xu

Master of Business Administration

Amie Nicole Allen
James Cameron Beeson
Randall Lee Bonner, Jr.
Ryan Thorpe Burgstiner
Earl Edwin Cashion III
Rachel Ann Clift
Narcisse Dargenson
Paul Edward Dellinger, Jr.
Nathan Kole Donaldson
Benjamin Nathanael Duggar
Mario A. Echiveste
Jaroslava Epps
Bradley Drew Etterle
Shelia Rae Fogarty
Justin John Gillette
Jeremy Robert Hart
Keyona Mechelle Hawkins
Deborah Jolee Haywood
Kathleen Elizabeth Hudson
Justin Jasper Janney
Ramsha Khalid
Taylor Landry Lewis
Audrey Davis Matthews
Natajia Livelle Miller
Adrian Mora
William Josiah Neville III
Danny Young Park
Kim Chi Pham
Natalie Maria Pitterson
Matthew Tyler Pivrotto
Rebecca Marie Probus
Christy Marie Purvis
Cassandra Simmons Robinson
Matthew Clayton Rodgers
Erin Elizabeth Schatz
Vernon Christopher Speight
John Brian Taylor
Ricardo Antonio Vazquez
Blake Alvin Wester

Jennifer Alaine Willis
Michael Ennio Zambino

Master of Science

Joshua Ryan Clamors
Jason Anthony Dale
Paul Joseph Fortin
William James Nolan
Julie Leona Page
Andrew Marshall Smith
Stephen Robert Stoltz
Cainan Moody Whelchel
Sarah Yednock

Master of Science in Applied Engineering

Jonathan L. Aaron
Michael Dale Boyett
Spencer Randall Harp
Kristen Dianne Hawkins
John Morris Killebrew
Noel Sean Murray
Brandon Jamel Sheppard

**CENTER FOR
INTERNATIONAL STUDIES**

Bachelor of Arts

Amanda Lynn Boerger
Brittany Sherrill Daniels
Carlos Manuel Feliciano, Jr.
Christopher Ryan Fox
Andrea Desalyn Gilbert-Williams
Amelia Christina Irvin
Megan Victoria Jacobs
Lisa Lam

Magna Cum Laude

DeDric Derrick Antwan Levines
Kim Un Mathews
Jesse Curtis Miller
Jose Christopher Ocampo
Cum Laude
David Brian Sansom
Christina Marie Smathers
Kathrine Jane Steeves

Bachelor of Science

Patrick Noah Bugara
Morgan Leighsey Jefferson
Nicole Nanci Lewis

**ALLEN E. PAULSON COLLEGE
OF ENGINEERING AND
INFORMATION TECHNOLOGY**

Bachelor of Science

Manuel Jose Barajas
Daniel Pearce Corley
Magna Cum Laude
Lucas Morgan Guess
Lindah Jerop Kotut
University Honors Program Scholar
Austin David Lawrence
Nathaniel Osikhotse Okogie
Rodgers Allen Stallworth
Travis Todd Wilson

***Bachelor of Science in
Civil Engineering Technology***

Jay C. Crosby

Adam McLean Dingman
Patrick Erin Miles
Vincent Terrell Owens
Daniel Zachary Wilson

***Bachelor of Science in
Electrical Engineering Technology***

Jonathon Jermell Q. Bell
Seth Alexander Brower
Myrion Edward Carter
Marcus Lee Ferguson
Jeremy Michael Goodman
Brent William Gordon
Andrew David Haney, Jr.
Chadwick Tavor Kenney
Jesse Ray Ludwig
Austin Langley Maddox
Kevin Michael Mahoney
Timothy Graham Palmer
Nicholas Bernard Smith
Dante' Martias Spradley
Jordan William Tucker

***Bachelor of Science in
Information Technology***

Maurice Sylvester Beverly II
Brandon Gregory Black
Cum Laude
Charles Christopher Burgess
Cum Laude
Raj Chaudhary
Andrew Collins
Jamichael Von'Tish Dawson
Robert N. Garrett
Cum Laude
William Henry Glodosky
Samuel Clayton Grace
Ronald Julius Gurley
Bryan Kelly Hoppe
William Terrell Hutto
Phillip Wilson Jones
Cecilia Long
Chandni Vishnu Patel
Melissa Dawn Ray
Damien Bryan Roberts
Jason B. Rogers
Stephen Peter Romanow
Kevin Anthony Soles
Christopher Haynes Standard
Darryl J. Walker
David Dwayne Webber
Lucas Ryan Yockey

***Bachelor of Science in
Mechanical Engineering***

Dwight Franklyn Gustard
Magna Cum Laude

***Bachelor of Science in
Mechanical Engineering Technology***

Lutfi Abdullah Al Bahrani
Ronald David Bonds, Jr.
Christopher Pico Calle
Jessica Lynne Carpenter
Jacob Tyler Clements
Simon Andre Galloway
Tanesha Renae Harris
Jonathan Kyle Hartsfield

Michael Edward Horton, Jr.
Anthony Lewis Howard
Miletus Hiram Jones III
Chris William Knieriem
Magna Cum Laude
Oliver Daniel Newman
Blake Daniel Patterson
Bryon Lynn Potter
Raymond O'Neal Scoggins
Jared Dewayne Smith
John Benjamin Wise

COLLEGE OF BUSINESS ADMINISTRATION

Bachelor of Business Administration

Ena Alibasic
Morgan Lance Anderson
Joshua Robert Anglehart
Chelsea Elyse Armstrong-Mitchell
Jonathan Christopher Ashley
Candice Renea Atkinson
Charles Richard Bacon
Eric Alexander Bailey
Joseph Richard Daniel Bakos
Deangelo Marquis Baldwin
Kayley Allison Bannister
Jack Hawkins Barfield IV
Jordan Daniel Barnes
Spencer Allen Barnes
Kamaal A. Barron
Maya Simone Bartee
Blake Christian Bass
Collin Michael Batchelor
Hannah Ruth Bazemore
Mildred Nicole Beaudrot
Deborah Nyra Beckum
Tiffany Crystal Bell
Henry Robert Bennett III
Ryan Dean Bishoff
Perry Chase Bishop
Terrance Brian Bissell
Cory James Blackburn
Everett Neese Boggs
Christian M. Bond
Brent William Boring
Joleen Elissa Bray
Sequona Senetris Brint
Suzanne Renee Brooks
Brittaney Shataiva Brown
Jared Nicholas Brown
Justin R. Brown
Samuel Paul Brown, Jr.
Jon Dennis Bryant
Patrick Noah Bugara
Kirsten Ruth Bulkeley
James Richard Bunch
Ioan-Paul Burca
Valarie Shea Burke
Ryan N. Burl
Melinda Ashlee Butler
Nicholas Haden Buttimer
Mesha Nicole Byrd
Kiesha Marie Cameron
John Michael Campbell
James Brandon Canterbury
Colton Lee Cape
Layla Terese Carpenter
Stephen Daniel Casteel

Alexander Shiaosun Chen
Christopher Ryan Coale
Bennett Clayton Cogdell
Kristen Lee Coleman
Jeremy Randall Colson
Amanda Dawn Craig
Jason Alexander Cramer
Katherine Elizabeth Crider
Joseph Tanner Croft
Casey Daniel Crosby
Steven H. Cundari
Michael Keith Daley
Gregory D'Alfonso
Andrea Yvette Daniels
Christopher Alan Davey
Brittany La'Porsha Davis
Diana Catherine Davis
Justin Worth Davis
Olivia R. Day
Eric A. de Oliveira
Cum Laude
Blake Thomas DeBartola
Christopher Andrew Denham
Jaymes Walker Denmark
Matt Wilson Donaldson
James Michael Dowd
Ryan D. Duke
Dale Armstrong Dunsmore
Adam Gary Edwards
Christopher John Eisenach
Rashad Randell Ellison
Derek Thomas Farnsworth
Warren Stephen Foote III
Joshua Rashad Ford
Whitley Renada' Foster
Haley Elizabeth Fountain
Keisha Kristen Francis
Kenneth Chaz Fraser
Caitlin Elizabeth Fritts
Dustin James Fryar
Xavier Lorenzo Gary
Don Arastus Gay III
James L. Gibson, Jr.
Ryan Alexander Gibson
Chakeira Micheale Gilbert
Lauren Elizabeth Glover
Clinton W. Goicoa
Andrea LaRhonda Gordon
Marcella Shanea Gordon
Sarah Tieve Gray
Laura Greathouse
Reece T. Greco
Brian L. Green
Vance Keith Green
Frederick Leigh Grundy II
Lauren Elizabeth Hagan
Raymond Alexander Hamilton
Ashley Nicole Hammond
Conrad Kelvin Harrell II
Kendall Renard Harrell
Gibran Harris
Caleb Russell Hartley
Cum Laude
Reannah Lane Haselden
Lindsay Regan Hayes
Jackson Edwin Head
David Earl Helton
Cum Laude

Jason Hunter Henderson
Christina Elaine Henley
Steven Mark Hileman
Shakema Shan-ta' Hill
Clint David Hines
Bryant Alexander Hitt
Richard Chase Hodges
William Pope Hopkins
Steven Christopher Hornaday
Brandon R. Howard
Devin Loren Hutchinson
Michael Lisonbee Hyatt
Todd Anthony Iacolino
Cum Laude
Craig Alexander Ingalls
Cum Laude
Zuri Kamua Ade James
Michael Johnson Janofsky
Patrick John Jennings
Brandon M. Johnson
Jessica Brooke Johnson
Veronika Johnson
Wallace Henri Johnson, Jr.
Philip S. Josey
LaShai Evelyn Joshua
Cum Laude
Cassandra Christine Joyner
Patrick W. Keating
Magna Cum Laude
Jonathan David Kelley
Kaitlin Elizabeth Kenney
Nathan Daniel Kiely
Forrest Jackson Kilgo
Katelyn Elizabeth Kitzel
Sylvia J. Kline
Garret J. Knaebel
†Matthew Andreas Kohler
Kevin Tyler Kucera
Amrin Amirali Kutchhi
Robert Andrew Lacefield
Brian Thomas Laminack
Daniel R. Lankhorst
Cody Ford Lanser
Mariam Damilola Lawal
Heetaek Lee
Erin E. Lenox
Raymond Alexander Levandoski III
Andrew Branton Libowsky
Abby Alexis Longwater
Thomas Michael Lynch
Khandis Latavia Mainer
Jordan B. Mallard
Alexander Phillip Marsh
Anthony David Martinez
Zachary Jacob Matthews
April Amanda Mazes
Michael James McCarthy
Andrew James McColister
Matthew Stanley McDaniel
Andrew Riley McKay
Devon Anthony McLean
Brittany I. McNeal
Daniel Membrillo
Jonathan David Mikulecky
Jack Louis Minor III
Jamario Rashad Molden
Rinaz Momin
Robert Colby Moody

Christopher Anthony Moore
Daniel E. Moore
Kevin Christopher Morgan
Igor Baleke Mundabi
Timothy Patrick Murphy
Haley Gail Murray
Stephanie Nails
Phoung Lisa Nguyen
Chaz W. Norfleet
Tobechi Nwaubi
James Spencer O'Bryan
Kara Lacey Odum
Bankole Olumide Odumade
Natalie Quinn Olliff
Wassila Delwinde Ouedraogo
Joseph Marion Owens II
Matthew Ryan Page
Dontae Lenard Parker
Shantell Pleshette Parks
Kishan Nitin Patel
Gary Martin Patterson, Jr.
William Ryan Pennington
Mariah Ann Perkins
Brandi Nichole Phillips
Cum Laude
Collin William Phillips
Cum Laude
Kevin Kibler Pierannunzi
Cindy M. Pollack
Kevin Tyler Pope
Cum Laude
Jean-Jacques Potgieter
Michael A. Purter, Jr.
Nicholas James Radunske
William Joseph Rawls
Donald W. Ray, Jr.
Veronica Nicole Redding
Glenn David Reid
Matthew Smith Reisinger
Robert Wade Rhodes
Emma Kate Rice-Tanner
Olivia Suzanne Richey
Joseph T. Ricketson
Paul Michael Ricks
Paul Adam Riggs
Cum Laude
Marc Dominic Rioux
Jordan Rozier Roberson
Courtney Leigh Rogers
David Kyle Rollins
Regan Allen Rue
Bryan Dennis Scarbary
Casey Lynn Scarborough
Benjamin Eugene Scott
Benjamin Forrest Sharp IV
Andrea Marquise Sheard
Clyde M. Sheets III
Cum Laude
Alec Mcgee Shepherd
Carl Thomas Shubert
Tommy E. Simmons, Jr.
Billy Jackson Simpson
Danielle Elizabeth Sinclair
Sean Gregory Slone
Cum Laude
Bradley Clark Smith
Erica Jerquetta Smith
Samuel Garrett Smith

Mark Andrew Smolinski
Deborah Denise Spellman
Brian Jamal Staten
Benjamin Albert Stephens
John Darrell Stevenson, Jr.
Heather Lee Stille
Cum Laude
Tyler Paul Sumner
Eric Alexander Sweet
Cum Laude
Stephen G Takacs
Robert Wu Tang
Brian Christopher Taylor
Burlie W. Taylor III
Vania Zuri Taylor
Patrick Allen Thigpen
Matthew Joseph Thomas
Kyle Aaron Thompson
Ameral Alexander Threat
Jordy Samuel Tippins
Alfred Colby Todd
Diego Trivino
Robert Allen Truesdell
Emily Morgan Turknett
Sterlon Earlon Reshawn Turner
Priscilla Rose Tyson
Travis Matthew Underwood
Cory Evan Vaughan
Paul David Verrilli
Greggory Dean Vickers
Magna Cum Laude
University Honors Program Scholar
Kyle James Vining
Hailey Jordan Wade
Juho Toni Samuel Waheeb
Cum Laude
Brian Johnny Walker
Joshua E. Ware
Joseph Christopher Waters
Ryan Adam Waters
Alexa Michelle Watkins
John Daniel Weber
Theodore Joseph Weitzel
Phillip Andrew West
Matthew Boyd Whaley
Ishmela Marie Whitaker
Eric Matthew Whitt
Lindsay Makaye Wildes
Atalia Unique Williams
Everton Bernard Williams, Jr.
Michael Ryan Willingham
Latalya Ciera Wilson
Taylor Richard Withrow
Brittany Nicole Woody
Austin Darrell Wright
Kerry Cletas Wright, Jr.
Rodney Chantee Wright
James Patrick Wurtz
Jacob L. Wynn
Jamell Jerrod Wynn
De'Nesha De'Onshae Yell

Bachelor of Science
Quan Doan Bui
Aubrey Herschel Collins IV
Kristin Lorraine Couch
Jonathan Jamie Culpepper
Colin Hayes Greene

Eliot Marvin Griffin
Shontá Nichole Hope
Bryan Charod James
Paige René Jean
Cum Laude
Alex Robert Willis Kowalczyk
Amy Rebecca Lewis
Tanera Renay Manuel
Breno E. Oliveira
Andrew Patrick Porreca
Patrick John Powers
Hannah Faith Ray
Christopher Marco Reali
Monquavious Anntwane Reid
Roshida Antonia Spencer
Willie Clyde Springer

Bachelor of Science in Construction

Babajide Amole
Grayson Edward Angel
Cum Laude
Jordan Prestwood Belcher
William Glenn Biletszkov
Robert Carson Coleman
Jefferson Kennedy Cowart
Alexander Julian Fant
William Kristoph Feus
Andrew David Flowers
Michael Jared Fowler
William Mason Greene
Barton Leigh Hamilton
Jacob Warren Hiers
Jesse Everett Hunter
Tommy R. James
Matthew Russell Kearney
Anh Le
Mitchell Adam Miner
Cameron Douglas Hawthorne Naab
Joshua Clark Nelson
John-Taylor Gray Peek
Daniel Ray Russell
Griffin Coy Sikes
Joel Hogan Simmons
Eric Kendall Skelton
Christopher Michael Sraeel
Randy Bernard Varner
Joseph Keith Whitfield

College of Science and Mathematics
College of Liberal Arts and Social Sciences
1:00 P.M. Ceremony

ACKNOWLEDGMENTS

FACULTY MARSHALS

Jack N. Averitt College of Graduate Studies

College of Science and Mathematics

College of Liberal Arts and Social Sciences

CAREN J. TOWN, Ph.D., *Professor, Literature and Philosophy*
YAN WU, Ph.D., *Professor, Mathematical Sciences*

JAMES M. LOBUE, Ph.D., *Associate Professor, Chemistry*
STEPHEN P. VIVES, Ph.D., *Professor and Chair, Biology*

JEFFREY D. BURSON, Ph.D., *Assistant Professor, History*
MARIA HELENA HERNANDEZ, M.Ed., *Lecturer, Foreign Languages*

READERS

College of Science and Mathematics

College of Liberal Arts and Social Sciences

JOY W. DARLEY, Ph.D., *Associate Professor, Mathematical Sciences*
S. JEFFREY UNDERWOOD, Ph.D., *Professor and Chair, Geology and Geography*

BRADLEY C. EDWARDS, Ph.D., *Lecturer, Literature and Philosophy*
ERIC A. HALL Ph.D., *Assistant Professor, History*

THE PLATFORM PARTY

BROOKS A. KEEL, Ph.D., *President*
KARA MARTIN, M.D., *Internist and Hospitalist, Piedmont Hospital*
JEAN E. BARTELS, Ph.D., *Provost and Vice President for Academic Affairs*
RONALD J. CORE, Ed.D., *Vice President for Business and Finance*
SALINDA A. ARTHUR, M.S., *Vice President for University Advancement and President, Georgia Southern University Foundation*
TERESA E. THOMPSON, Ph.D., *Vice President for Student Affairs and Enrollment Management*
STEVEN C. BURRELL, Ed.S., *Vice President for Information Technology/Chief Information Officer*
CHARLES E. PATTERSON, Ph.D., *Vice President for Research and Economic Development and Dean, Jack N. Averitt College of Graduate Studies*
RUSSELL T. KEEN, B.B.A., *Vice President for Government Relations and Community Engagement*
CURTIS E. RICKER, D.A., *Dean, College of Liberal Arts and Social Sciences*
MARTHA L. ABELL, Ph.D., *Dean, College of Science and Mathematics*
FREDERIC D. MYNARD, Ph.D., *Moderator, Faculty Senate*
VELMA S. BURDEN, Ed.D., *Registrar*

PROGRAM

*PROCESSIONAL	<i>Pomp and Circumstance</i> (Military March No. 1, Op. 39) by Edward Elgar Performed by: MICHAEL BRAZ, Ph.D., <i>Professor Emeritus, Music</i>
Macebearer	FREDERIC D. MYNARD, Ph.D., <i>Associate Professor, Mathematical Sciences</i>
INTRODUCTION OF THE PRESIDENT	PROVOST BARTELS
WELCOME	PRESIDENT KEEL
MEDITATION	DEAN RICKER
INTRODUCTION OF SPEAKER	DEAN ABELL
COMMENCEMENT ADDRESS	DR. MARTIN
RECOGNITION OF EMERITUS STAFF AND FACULTY	PROVOST BARTELS
CONFERRING OF GRADUATE DEGREES	PRESIDENT KEEL DEAN PATTERSON
RECOGNITION OF HONOR GRADUATES	PROVOST BARTELS
CONFERRING OF UNDERGRADUATE DEGREES	PRESIDENT KEEL PROVOST BARTELS DEAN ABELL DEAN RICKER
*ALMA MATER	ROBERT DASHAWN FIGUEROA, <i>Graduating Senior, Bachelor of Music, Music Education</i>
*RECESSIONAL	<i>Wedding Day at Troldhaugen</i> by Grieg Performed by: MICHAEL BRAZ, Ph.D., <i>Professor Emeritus, Music</i>

*AUDIENCE PLEASE STAND

We would like to thank the ROTC Cadets and other Georgia Southern University volunteers for their assistance with today's ceremony.

JACK N. AVERITT COLLEGE OF GRADUATE STUDIES

Doctor of Psychology Clinical Psychology

Forrest Jay Rackham

B.A., Bowling Green State University, 2007

M.S., Georgia Southern University, 2011

Dissertation: *"Bless her little heart": The Culture of Honor
and Emotion Recognition*

Major Professor: Amy Hackney, Ph.D.

Master of Fine Arts

Art

Wesley Lamar Stewart

B.F.A., Augusta State University, 2007

Thesis: *Drawings in Space*

Major Professor: Marc Moulton, M.F.A.

Master of Fine Arts

Art

Jennifer Lee McLaughlin

B.F.A., Georgia Southern University, 2009

Thesis: *The Hapathetic Generation*

Major Professor: Leigh Thomson, M.F.A.

Master of Fine Arts

Art

Alicia Rebeca Perez

B.F.A., Armstrong Atlantic State University, 2009

Thesis: *La Sangre Llama*

Major Professor: Patricia J. Walker, M.F.A.

**JACK N. AVERITT COLLEGE
OF GRADUATE STUDIES**

Master of Arts

Walter Neal Austin
Paul Woodrow Bridges II
Teresa Buzo Salas
Monica Fabiola Castaneda
Mary Elizabeth Craft
Marlaina Dreher
Joseph Aaron Fordham
Misty Ann Giles
Robert Jerome Greene II
Lindsay Pauline Hackman
Mallory Leilan Hicks
Zulema Ibarra
Matthew A. Luke
Jennifer Hudson Meadows
Danielle Louise Patrick
Heidi Bethany Purvis
Stephen Taylor Purvis
Deborah Marie Rodriguez Garcia
Farrah R. Senn
Kimberly Nicole Stone
Mallary Jean Taylor
Marsha K. Welch

Master of Music

Eric Demond Jones
Ralph Daniel Long
Marcus Kareem Rayner, Sr.
Reginald Victor Smith
Hiu Ching Angela Wong

Master of Public Administration

Shenise M. Edwards
Janette Leigh Gordy
Melinda Nora Laughlin
Callie Ranae McDonald
Christina Diana Newman
Robert J. Robinson
Earle Wingrove Turner, Jr.

Master of Science

James Gregory Adams
Kylie Nicole Barefoot
Wade Carlton Carruth III
Jeremy Taake Davis
Michael Stephen Davis
Charles Russell Dedrickson III
Lisa Kaili Diamond
Lisa Elaine Dlugolecki
Matthew Robert Erickson
Dat T. Hoang
Linus Johan Lindroos
Kenan Oguz Matterson
Vanessa Marie Miller
Timothy Randal Moore
Sarah Rebecca Osborn
Ketan Vasant Patel
Jessica Diana Self
Bodhipaksha Buddhi Prabasha Thilakarathne
Marshall Buck West

**COLLEGE OF SCIENCE AND
MATHEMATICS**

Bachelor of Arts

James William Boney
Melanie Ben'Nisea Clark
Charles Lloyd Freeman

Patrick Allen Henderson
Nathaniel Alexander Trull

Bachelor of Science

Dareeka Shuntavia Coleman
Andrew Glenn McLean
Patrick Ryan Morley
Kathlene Jane Ricketts
Steven Paul Thibodeau
Scott James VanVelzor
Jesse Russell Winter

Bachelor of Science in Biology

Michelle Louise Ackerman
Meredith Leigh Avery
Cristina Marie Barndollar
Blair Candace Barneycastle
Alysha Jeannine Benn
Michael David Bergeron
Benjamin David Blaxton
Thurman Alan Bradley

Cum Laude

Ashley Elizabeth Callis
Makim Travis Christian
Ashley Elise Dotson

Magna Cum Laude

Kirsten Alyse Edwards
Pamela Tatianna Etienne
Corinna M. Exum
Sarah Elizabeth Farmer

University Honors Program Scholar

Shajuna Shardi' Fisher
Kristy Joanne Gierke

Magna Cum Laude

Ian Edward Glisson

Mary Kate Hyer

Nicole Rai Infarinato

Summa Cum Laude

University Honors Program Scholar

Bradley John Kangeter
Anthony Lebrecht Keenan
Tyrone Kennedy
Raheem LaShun King
Arden Marie Klineczar
DieuValdine Lamartiniere
Brandon Scott Lane
Jordanna Lee Lundgren
Ericka Joy Mason
George C. McCulley
Jasmine Simone McNeil
Lauren Celeste Mullinax
Edwin Rolando Orellana
Andrew Hill Partain
Brian Dorsey Peebles
Taylor Shaun Phelps

Magna Cum Laude

Shannon Beth Powell

Cum Laude

Charlotte Ann Radford
Patrick Allen Ramos
Reyna Santiago
Christopher Myles Shepherd
Sheri Carrie Shillingford
James Byron Spires
Brittney L. Stewart
Kathryn Vaughn Stewart
Aniya S. Strong
Kenneth Bernard Tabor
Cherelle Ann-Marie Tucker
Jody Ann Warwin

Joycelyn Dionne White
Sashia LaFaye White
Christina Maria Wilson
Tyler Harris Yeomans

Bachelor of Science in Chemistry

Nazim H. Ali
Julienne Evans Baldwin
Lynn Barlow
Biebele JoAnn Benson-Jaja
Chisara Lashan Carey
Meagan Amiee Cassell
Omar Diop
Alexander Webb Gaskin
Miah Victoria Johnson
Candace Athena Lee
Jordan Micah Lightfoot
Stephen Patrick McIntyre
Danielle Marie Mucha
Corey Aaron Pate
Mark Nathan Smith
Jordan Brent Vaughn
Tamara LaTrice Wright

Bachelor of Science in Mathematics

Mica Eugene Baggett
Nikolas Alexander Logue

Bachelor of Science in Physics

James Edward Barr
Matthew Eric Kaufman
Summa Cum Laude
Antonio McBride
Kristopher Rustin Peebles

**COLLEGE OF LIBERAL ARTS
AND SOCIAL SCIENCES**

Bachelor of Arts

Galia Al-amiri
Virginia Lynn Angles
Alfredo Anguiano
Jeffrey Bryan Baisch
Ka'Sandra Janea Baker
Whitney Denise Baker
Matt Steven Ballman
Keli Jañese Barnett
Alicia Irielle Bass
Brigitte Sabatini Beam
Alicia LaShawn Bennett
Katherine Megan Blair
Jessica Marie Briley
Cum Laude
Alexandria P. Brooks
Anthony Lavelle Brown, II
Casey Darlene Bunch
Cum Laude
Derek Anthony Burch
Annie R. Burke
Eliot Chaz Butler
Aureathia Shandrell Byrd
Mallory Nicole Cabe
Keenan Montrez Cameron
Zachary Johnathan Capito
Christopher Andrew Combs
Magna Cum Laude
Rachel Marie Conner
Magna Cum Laude
Caitlin Elizabeth Crute
Summa Cum Laude

Edio José Del Castanhel Filho
Cum Laude
 Alexandria Michelle Docalavich
 Sarah Beth Edwards
 Kathryn Teresa Elliott
 Ryan Oliver Evans
 Brittany Lisa Forrester
Magna Cum Laude
 Chelsea Catherine Fowler
 Virginia Lynn Fuller
 Brandon Paul Giella
 Allyson Claire Goff
 Kelsey Kendrick Goodman
 Donald Alexander Graczyk
 Kevin Andrew Gregan
 Anita Denise Grimsley
 Brendon Phillip Hall
Cum Laude
 Jeremy Blake Halligan
 Brandon Roshawn Hammond
 Seth Ryan Hardin
 Danielle Nicole Harvey
 Meagan Yvonne Hedden
 Timothy Francis Hennessey
 Victoria Hernandez
Summa Cum Laude
 Keturah Natasha Hollowell
 Kia Niel Hunt
 Kathryn Bridie Hurst
Cum Laude
 Robert Stephen Jaracz, Jr.
 Kaylee Margurite Johnson
 Steven Ray Kennedy
 Grace Lee Kessenich
 Emily Catherine Knight
 Rachel Hope Lanter
Magna Cum Laude
 Charles Brian Lawson
 Sarah Allyson Layne
 Raven Brooke Levingston
 Garrett Elizabeth Litton
Cum Laude
University Honors Program Scholar
 Stephen Ryan Matherly
Cum Laude
 Emma Marie Mathews
 Jessica Lee McKenzie
 Jade Janell Mckidden
 Falencia Shantell McKinney
 Timothy Andrew McMullan
 Sarah Nichole Hastings Mikeal
 Samantha Jolene Miller
 Mary Simpson Montgomery
 Cary C Morowitz
 Cary C Morowitz
 Heidi Robin Moye
 Jean Carlos Navedo
 Megan Leigh Neely
 David Thomas Nelson
 Amanda Nakano Nesmith
 Anastasia Nichole Netzinger
 Breno E. Oliveira
 Shannon Raye Patrick
 Mark Eugene Peacock, Jr.
 Pharone LaShaun Price
 Tanya S. Ramnauth
Magna Cum Laude
 Enrique Ramos
 Jason Lamar Richardson

Kaelin Elizabeth Richardson
Cum Laude
 Tiara Shondraya Richmond
 Jordan Eric Rushing
 Chad Joseph Sanderson
University Honors Program Scholar
 Larry Joe Sconyers, Jr.
 Nicole Jasmine Sherrod
 Brittany Aleise Smith
Summa Cum Laude
 Nicholas Todd Smith
 Corey Nathaniel Spillers
 Emily Erin Stanley
 Emma Caroline Stephens
 Brian Edward Sullivan
 Sarah Michelle Hope Thomas
 Tierra Renee Thompson
 Ashley Nicole Thornton
 Ashley Davenport Thorpe
 Ray Keshia Monique Toomer
 Paul David Verrilli
 Caroline Grace Walden
 Sally Beaty Wallace
 Theodore Preston Welsh
 Bentley Rankin Wilkerson
 Jonathan C Williamson
 Megan Rochelle Wilson
 Patrick Tucker Wood
Magna Cum Laude
 Doris Kenya Woodley
 Chrystian Symone Woods

Bachelor of Fine Arts

Ni-ka Ford
 Kelsey Marie Gambill
 Jessica Lynn Golden
Magna Cum Laude
 Robert Corey Hawkins
 Jacob Riley King
 Alvin Christopher McBride
 Nikeia Marie McMillon-Deangelou
 Shaun J. Place
 Lauren Ruth Williams

Bachelor of General Studies

Joshua Brandon Adams
 Peyton O'Neal Allen
 Kedra La'Tonya Archie
 Nicholas H. Ashley
 Osawemwengie Michael Atekha
 Korentheus Jerome Bailey
 Kaitlin Noel Ball
 Natadra Trenier Barr
 Brian Javon Beam
 Lisa Beasley-McNutt
 Camary Benniefield
 Molly Bonnie Bentley
 Dustin Scott Bostwick
 Ashley Nicole Brantley
 Terronique Tamyra Brown
 Christopher Octavious Carter
 Elizabeth B. Chandlee
 Tiffany Racheal Chandler
 Robert Andrew Clark
 Jason Joseph Cochran
 Marquita J. Coombs
 Joseph Davis
 Russell John Demasi
 Sarah Jeanne Dozier
 John Anthony Ducey, Jr.

Anthony Brandon Echols
 Hannah Zewditu Enyew
 Kristin Nicole Enzor
 Alex Kirby Evert
 Turner A. Fordham
 Raven Simone Gardner
 Jimmy Harold Gill III
 Niesha Allegra Graddy
 Kristin Faith Grebel
 Harold Justin Griffith
 Brett Aldine Hammock
 Courtland Marquis Harden
 Desteni Lyntrice Hawkins
 Devyn Christopher Hawkins
 William Porter Headlee
 Jeremy Teatris-Diamond Hill
 William Robert Hill
 Ramsie Laine Hobbs
 Lauren Ashley Hodges
 Trish Marie Howell
Cum Laude
 William Dennis Hurst
 Victor Chad Ivester
 Kelly P. Jarriel
 Devron Jemeal Jefferson
 Bryan Ashley Jenkins, Jr.
 Turquoise Rasha Jones
 Trumondra Lasha Jordan
 Steffany Brooke Kangeter
 Aaron Samuel Keith
 Margaret Mamie Kendall
 Sarah Weber King
 Frances Elizabeth LaFoy
 Kenton Mitchel Landon
 Jarret Russell Leverett
 Jonathan Christain Lewis
 Thomas LeMont Lewis
 Jordania La'Vonta Lilly
 Crystal Lee Martin
 William Blake Mask
 Jennifer Ferrelle Matthews
 Roy Harold Mayes, Jr.
 Channing Dorothy McCullum
 Ashley Ryan McGahee
Cum Laude
 Donta Andrevius McMichael
 William Harrison McWhorter III
 Cecilia Marie Mendoza
 Joseph Morgan Boozer Middleton
 Tyler Jack Mosley
 Jessica Celeste Murray
 Patrick Martin Murray
 Blake Anthony Nation
 Brandon Chase Newton
 Whitney Michelle Norman
 Robert Stephen Odom, Jr.
 Kevan Glynn Patterson
 Mallori Gwen Patterson
 Darius Jerome Postell
 Erin Michelle Powers
 Janice Monique Pressley
 James Hanson Pritchard III
 Kathleen Elizabeth Putnal
 Melissa Anne Quick
 Dain Alexander Reams
 Zachary Michael Reckers
 Tyler Ian Reece
 Genai De'Quan Reeves
 Jamie W. Riexinger
 Darreion Robinson

Brent William Russell
Angela Marie Savage
Henry D. Schmidt
William B. Shurling
Ann R. Sinnen
Steven Colquitt Sweat
Michael Garedeu Tessema
Carmika Shanann Thompson
Brady Phillip Timbs
Kathryn Alexis Layne Vonier
Michael Brantly Waters, Jr.
James E. Webb, Jr.
William R. Wester III
Cynthia Lea Weston
Whitney Marie Whittington
Brian Emmanuel Wilcher
Jennifer Leigh Williams
Stephen Edward Wilson
Jenna Marie Yarbrough

Bachelor of Music

Elaina Claire Bass
Taylor Allen Bowden
Robert Dashawn Figueroa
Andrew Hays Purvis
Jeffrey Adam Ralston
Cory Austin Robinson
Lindsay Holace Sandberg

Bachelor of Science

Michael Brandon Anderson
Sarah Louise Arafa
Jenean Marstell Armstrong
Rachel Louise Bagwell
Hykeen LeJuan Bailey
Kristopher Ellis Bailey
Felicia Nacole Banks
Amanda Kay Benesh
Cum Laude
Michael Adam Bennett
Jasmine Elizabeth Binion
Amanda Leigh Blount
Candice Lynne Blount
Caitlin Alyxandria Branham
Jason Channing Braswell
Andramada Relexis Brittian
Amanda Christine Brown
Sydney Elizabeth Brown
Marsha Michelle Buckson
Jessica Lee Cameron
Jason Theron Carter
Cum Laude
Latoshia Mosley Carter
Kathy-Lee Jolisa Cassie
Fredrick Burdett Chapin
Claud Frank Cobb
Kara Nicole Cofield
Tremel Coleman
Rachel Marie Conner
Magna Cum Laude
Kamaria Shani Cooke
Jessica Marie Craven
Emily Renae Creel
Lydia Margaret Cremer
Tierrika Jonette Cummings
Matthew Gabriel D'La Rotta
Regia Tiara Davis
Daisja D'atra Dukes
Michael E. Eberhardt

Joshua Ewell Edwards
Magna Cum Laude
Kelsey Yvonne Elam
Ashly Christine Ennis
Cum Laude
Whitney Kiana Farley
Crystal Lee Farrow
Taylor Marie Gallagher
Courtney Marie Germany
Lionel Sevesta Glover, Jr.
Brent Lee Goldman
Quanesha Denise Grant
Brianna Nicole Halpern
Keanya Renee Harris
Sarah Blessshay Henderson
Joseph Daniel Hendley
Janise Danielle Holder
Ashley Jennae Horton
Marybeth Cali Hreha
Blane Alexander Humphries
Cum Laude

Porsha Janay Jackson
Casey Eleanor Johnson
Steven Lee Jones
Amanda Kay Kepshire

Cum Laude
Hayli Renee Ketner
Taylor Elizabeth Kidd
Shayla Rose King
Brian Adam Kolesar
Tiffany Louise Larkin
Ethan Parker Lavine
Zachary Lewis Lee
Donna Elaine Lewis
Malcolm Kenji Link
Claire Catherine Loucka
Hannah Michelle Lynch
Charles Jackson McGahee
Branden Donnail McGriff
Denzel Rashad Merrill
Ryan Daniel Miller
Breana Janae Mitchell
James Scott Mobley
Samantha Monteagudo
Michael Patrick Moran
April Susan Moultrie
Crystal Nilene Navarro
Christopher John Newsome
Obafemi Oduberjo
Kelsey Marie Olberding
Daniel James O'Shea

Cum Laude
Jay David O'Shields
Andrew Jeffreys Paine
Sean D. Parchem
Julia Karen Popowski
Katherine Annalynn Powell
Zandria Richelle Redding
Kelli René Rushing
Magna Cum Laude
David Paul Schuetz
Elisabeth Catherine Scott
Magna Cum Laude
Shann Michael Scott
Ashley Marie Sheldon
Cum Laude
Rachel Danielle Singer
Adria Michelle Smith
Olivia Michelle Latimore Smith
Britney Kay Tanner

Kayla Chanelle Taylor
Travis A. Teilhaber
Trevor J. Temple
Kristen Marie Thompson
Kyle Anthony Tonione
Travon Amir Trammell
Jerica Tennille Tucker
Annie Leigh Tuggle
Stephane Turin
Melanie Michele Underwood
Magna Cum Laude
Nadia Annalise Vining
Tanisha Michelle Wadley
Heather Michelle Waters
Edward Charles Wells
Alexis Seqoyah Williams
Ryann Alana Pearson Willoughby
Charles Daniel Wilson

**Bachelor of Science in
Graphic Communications Management**

Delton Brainard Bates II
Charles Stephen Skinner
Brandon M. Smith

Bachelor of Science in Justice Studies

Patrice Mari'Nika Shana Antalan
Kristy Michelle Bacon
Ian Matthew Badger
Gary Mcdonald Baker
John Brodie Bennett
Thomas Bonaparte, Jr.
Brittany Nakeisha Brown
Zachary Calhoun Corcoran
Cynthia Denise Cross
Joshua Logan Daughtrey
Marcus Donte Esters
Jasmine Flores
Landis Peter Ford
Andrew Charles Gay
William McDaniel Hagin
Melanie Anne Hart
Lauren Kay Hays
Tiffany Lacora Hood
Robert Colby Howard
Sadara Gwenelle James
Yasmine Jarell Johnson
Jessica Annette King
Harrison Wayne Lee
Alexandria Delores Mann
Samantha Carol Marzullo
Cum Laude
Erin Marie McIntyre
Tysha Nichole Mitchell
Alexander Ryan Pender
Aaron Michael Phillips
Cum Laude
William Powell Porter
Myia Marie Nelson
Amanda Elyse Rumer
Jerome Brooks Sinclair II
Chad David Smith
Leslie Kathleen Smith
Timothy Dale Thrash
Cum Laude
Lilli Michon Tonkovich
Holden Keith Trout
Karl Dieter Wittkowski
Chyniqua Monia Yarbrough

“Freedom”

is a non-releasable American Bald Eagle permitted to Georgia Southern University
Center for Wildlife Education & Lamar Q Ball, Jr. Raptor Center

Today, Georgia Southern University acknowledges the remarkable achievements of our graduates and celebrates a popular and enduring commencement tradition with the appearance of Freedom, our American Bald Eagle mascot. Freedom's arrival during the singing of the Georgia Southern Alma Mater signifies the conclusion of the commencement ceremony. He serves not only as an ambassador for wildlife, but as an iconic reminder of the strength and majesty of our nation.

Freedom is a male Southern bald eagle that was found knocked out of the nest in Maitland, Florida. Only weeks old and appearing like a “brown ball of fuzz,” it was discovered that the young eagle had an injury to his beak and suffered from an infection. Rushed to the Florida Audubon Center for Birds of Prey, Freedom made a complete recovery from the infection, but the injury to his beak was permanent, preventing his release into the wild. With the permission of the United States Fish and Wildlife Service, Georgia Southern acquired Freedom in 2004.

Through the Georgia Southern University Center for Wildlife Education and Lamar Q Ball, Jr. Raptor Center, thousands of visitors young and old are embraced by the power of Freedom. Freedom is one of three American Bald Eagles housed at the 18-acre sanctuary, located in the heart of Georgia Southern's campus. The Center also contains numerous species of native raptors, reptiles and amphibians.

For more information, visit: www.GeorgiaSouthern.edu/wildlife.

Did You Know?

- The bald eagle is found only in North America.
- The bald eagle became the official symbol of the United States of America in 1782.
- Georgia Southern University adopted the eagle as its symbol in 1960.
- The bald eagle owes its name to the Middle English term “balled,” meaning “shining white.” The adult bald eagle's head and neck feathers are all white, giving it the name “balled eagle,” meaning “white eagle.”
- The bald eagle has a wingspan of 6-8 ft., and makes its home along coastlines and large bodies of fresh water.
- Eagles are mature at five years of age.
- Eagles require a 25-mile hunting territory and appear to mate for life (can live as long as 50 years).
- Forty years ago, the bald eagle was nearing extinction with just 417 nesting pairs of birds known in the United States. Today, the bird has made a remarkable comeback and is now off the Endangered Species List.
- In 1983, no nesting pair of eagles could be found in Georgia. Today, Georgia has more than 150 known nesting pairs throughout the state.



Georgia Southern University Alma Mater

Caryl Cain Brown

David Mathew



1. From hum-ble farm be-gin-nings Sprung up from san-dy earth A-
2. Through tri-umphs and through tri-als Our Al-ma Ma-ter's stood as



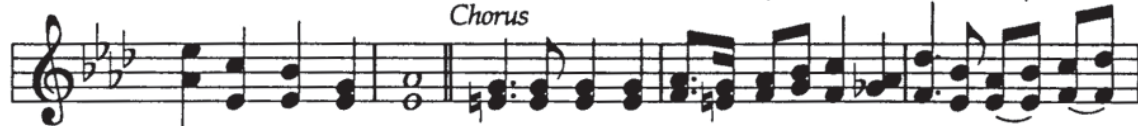
mong the tow-ring pine trees stands a trea-sure of great worth. Her price can-not be
sol-id as the oak trees for- jus-tice and for good. As through these gates we



mea-sured in sil-ver or in gold but in the love and loy-al-ty that
tra-vel and though our ways must part our Geor-gia Sou-thern mem'-ries we'll



Chorus



ma-ny hearts en-fold. Geor-gia Sou-thern U-ni-ver-si-ty, On ea-gles wings you
keep with-in our hearts.



soar — We pledge to you our loy-al-ty and love for-ev-er more.

