

Reflector

1927

Georgia Southern University

Follow this and additional works at: <https://digitalcommons.georgiasouthern.edu/reflector-yearbook>



Part of the [Higher Education Commons](#)

Recommended Citation

Georgia Southern University, "Reflector" (1927). *Reflector Yearbook*. 2.
<https://digitalcommons.georgiasouthern.edu/reflector-yearbook/2>

This book is brought to you for free and open access by the Student Media at Digital Commons@Georgia Southern. It has been accepted for inclusion in Reflector Yearbook by an authorized administrator of Digital Commons@Georgia Southern. For more information, please contact digitalcommons@georgiasouthern.edu.

Reflector

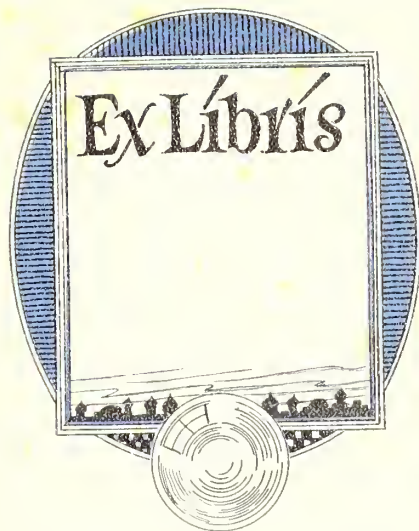


1927

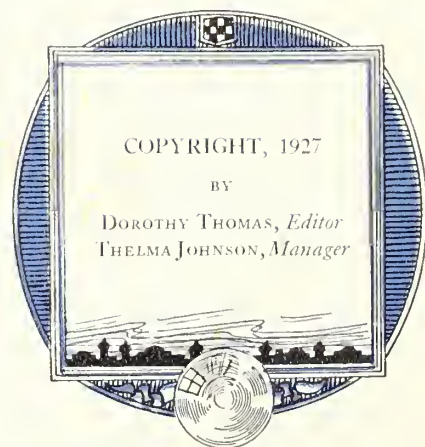


Digitized by the Internet Archive
in 2014

<https://archive.org/details/reflector1927na>

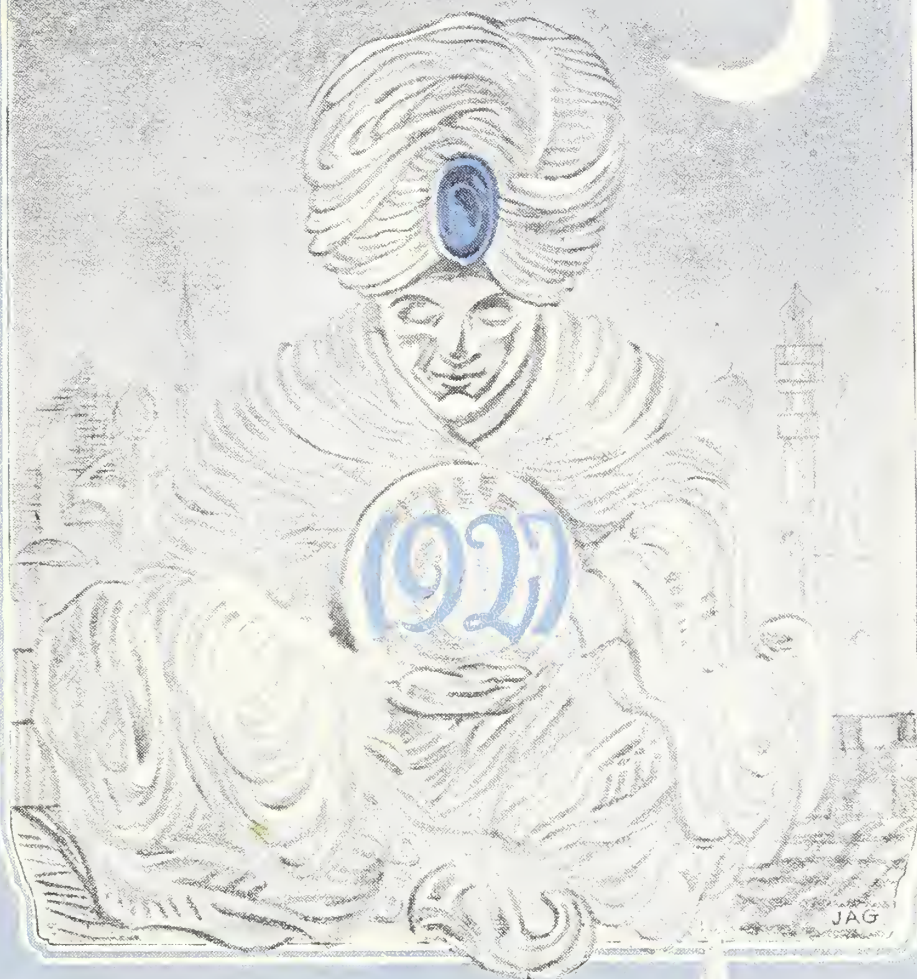


Ex Libris



The
REFLECTOR

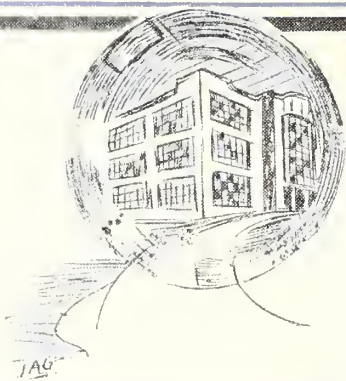
PUBLISHED BY THE STUDENTS
OF
GEORGIA NORMAL SCHOOL
STATESBORO, GA.



Dedication

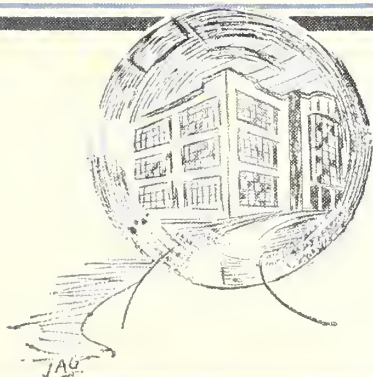
To our teacher and friend
Davis Nye Barron

in recognition of the high ideals set
before us by him and his faithfulness
to his work through love for the college,
we affectionately dedicate this second
volume of the Reflector.





Davis Nye Barron, B. S. A., M. A.



Foreword

The Staff of 1927 has attempted through this, the second volume of the Reflector, to leave tokens of happiness which in years to come will reflect the joys and pleasures of happy college days. It has been our aim to put out a book that any student will be proud of and look on as a priceless treasure.



Contents

Book One . . . { The College
The Campus
The Faculty

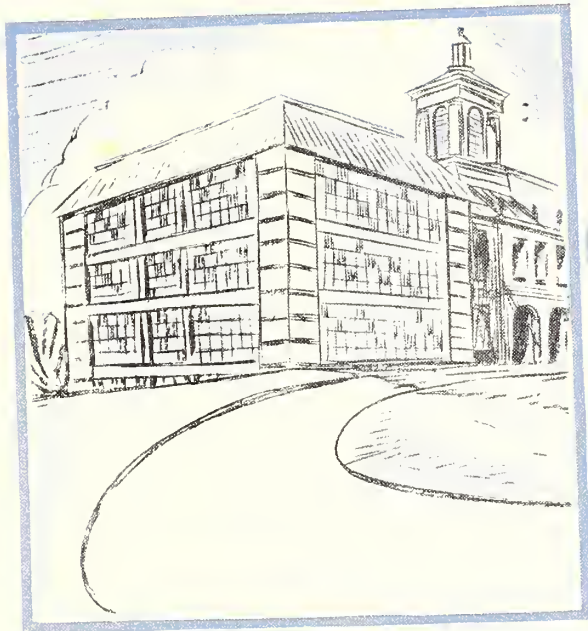
Book Two . . . { The Classes
Sophomores
Freshmen
Seniors
Juniors
Sophomores

Book Three . . . { College Activities
Organizations
Athletics

Book Four . . . Features



COLLEGE





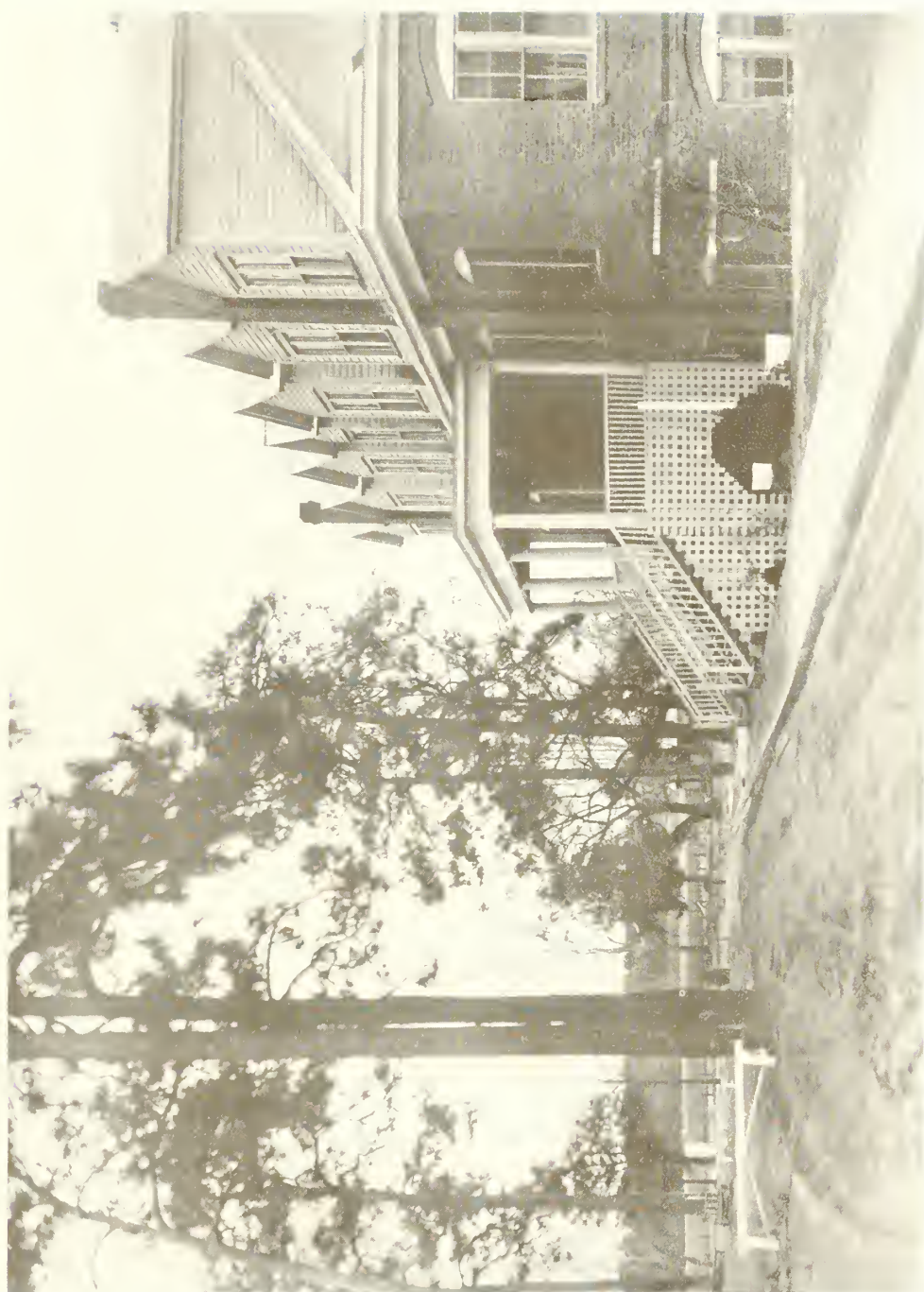
Administration Building



East Dormitory

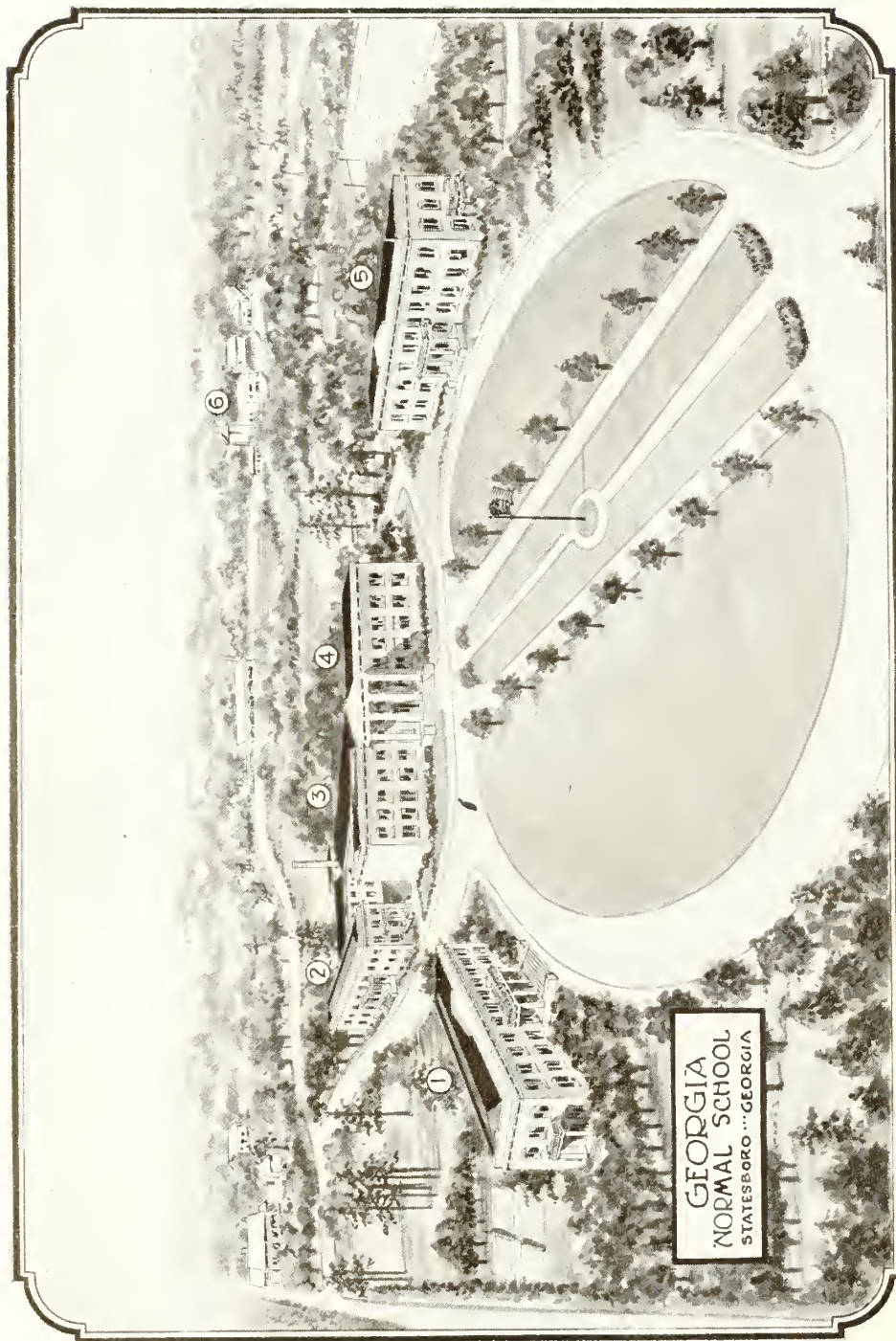


REFLECTOR



View of Campus

REFLECTOR



- 1. East Dormitory
- 2. Dining Hall
- 3. Auditorium
- 4. Administration Building
- 5. West Dormitory
- 6. Farm Buildings



In Memoriam

DEAN ERNEST ANDERSON

An Inspiring Teacher—One of God's Noblemen

Born—March 19, 1883

Died—April 15, 1927

The Georgia Normal has suffered a great loss in the passing of this great educator. He lived only to serve. He was honest, earnest, enthusiastic, cheerful and above all a friendly soul. He lived in a "House by the Side of the Road" and was a friend to man.





MR. GUY H. WELLS, A.B., M.A.
President





REFLECTOR

LULA E. BELL
Dean of Women

MRS. A. A. SINGLEY
University of South Carolina
Secretary

MRS. CLARA CARITHERS
Dietitian

ERNEST ANDERSON, A.B.
University of Georgia
Dean

EVELYN H. COLEMAN
Brenau Conservatory; Atlanta Conservatory;
Wesleyan Conservatory
Music

ELIZABETH BRUCE, B.S.H.E.
State Normal; University of Georgia; Grad-
uate work at Columbia University
Home Economics

FRANCES STUBBS, A.B.
Georgia State College for Women
Librarian and Languages

KATHLEEN POUND
Georgia State College for Women; University
of North Carolina
Principal of Training School





REFLECTOR



JOHN M. PHAGAN, B.S.
State Normal College, Florence, Alabama
*Mathematics and Director of Extension
Department*

MABEL BRUNSON
Bookkeeper

JEWEL JORDAN MATHEWS
Piedmont College; Special Student of Geneva
Allbright and Glenny Mosley
Industrial Arts

MALVINA TRUSSELL, B.S.
Georgia State College for Women; Graduate
Work at Cornell University
Science

MARGUERITE TURNER
Wesleyan College; George Peabody College
for Teachers
Expression

ALVIN A. SINGLEY, A.B., A.M.
Newberry College; University of South
Carolina
History

BURRUS MATHEWS, A.B., M.A.
Union University; Graduate Work at George
Peabody College
Education

HILDA TUBB, A.B., M.A.
Tennessee College; George Peabody College
for Teachers
English

CLASSES





SOPHOMORE



DOROTHY ANDERSON

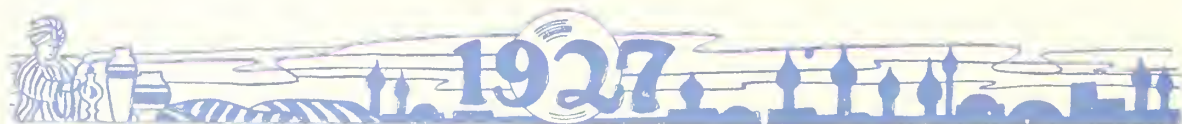
Statesboro, Georgia

Entered, '27, from Chicora College;
Stephens Literary Society; Bulloch
County Club.

LUNEIL BELL

Waynesboro, Georgia

Entered, '26; Editor-in-Chief
"Torch;" Stephens Literary Society,
'26-'27; Glee Club, '26-'27; Music
Club, '26-'27.



JUANITA BLAND

Statesboro, Georgia

Entered, '25; Stephens Literary Society, '25-'27; Glee Club, '25-'27; Home Economics Club, '25-'26; Education Club, '25-'26; Bulloch County Club.



MYRENE BROWN

Garfield, Georgia

Entered, '25; Stephens Literary Society, '25-'26; Corresponding Secretary of Home Economics Club, '26-'27; Glee Club, '25-'27; Basket-ball, '25-'27.



MARGARET CONE

Statesboro, Georgia

Entered, '27, from Wesleyan College; Stephens Literary Society; Bulloch County Club.

MARY LOU COWART

Glaxton, Georgia

Entered, '25; Oglethorpe Literary Society, '25-'27; Dramatic Club, '25-'27; Reporter Whistler Art Club, '26; McDowell Music Club, '26-'27; Glee Club, '26-'27; Education Club, '25-'26.



REFLECTOR

NITA DONEHOO

Statesboro, Georgia

Entered, '27, from Shorter College;
Stephens Literary Society; Bulloch
County Club.



MARION DuBOSE

Ludowici, Georgia

Entered, '25; Stephens Literary So-
ciety, '25-'26; Basket-ball, '26-'27; Glee
Club, '25-'27; Scrap Bag Editor of
"Torch," '25-'27; Y. W. C. A., '25-
'26; G. T. O. B. Club, '25-'26; H. O.
Z. Club, '26-'27; Vesper Leader; Stu-
dent Council.





INEZ DURDEN

Savannah, Georgia

Entered, '26; Treasurer of Sophomore Class, '26-'27; Treasurer of Stephens Literary Society, '26-'27; Chorister of Vesper, first term, '26; Glee Club, '26; Student Council.

ELOISE EDENFIELD

Oliver, Georgia

Entered, '26, from State Normal College; Literary Editor of the "Reflector," '26-'27; Athletic Club, '26-'27; Glee Club, '26-'27; McDowell Music Club, '26-'27; Bulloch County Club.





LUCILE FUTRELLE

Statesboro, Georgia

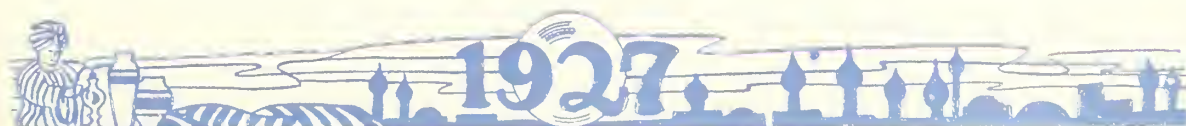
Entered, '26, from Georgia State College for Women; Stephens Literary Society; Bulloch County Club.



THELMA JOHNSON

Garfield, Georgia

Entered, '25; Secretary of Freshman Class, '25-'26; Basket-ball, '25-'26; Secretary and Treasurer Dramatic Club, '25-'26; Secretary and Treasurer of Art Club, '26; Vice-President of Y. W. C. A., '26; Assistant Business Manager of "Reflector," '26; President of Sophomore Class, '26-'27; Vice-President Student Council, '27; Business Manager of the "Reflector;" Stephens Literary Society, '25-'27; Whistler Art Club; Glee Club; Athletic Club; Education Club; Cheer Leader.





REFLECTOR



ARRIE LOU LEE

Dover, Georgia

Entered, '25; Stephens Literary Society, '25-'27; Basket-ball, '25-'27; Home Economics Club, '25-'26; Athletic Club, '25-'26; Y. W. C. A., '25-'26; Glee Club, '25-'27.



BERNICE LEE

Leefield, Georgia

Entered, '24; President of Freshman Class, '25-'26; President of Bulloch County Club, '25-'26; Oglethorpe Literary Society, '25-'27; Secretary, first term, '26; Assistant Editor of "Reflector," '26; McDowell Music Club, '25-'27; Vice-President, first term, '26; Whistler Art Club; H. O. Z. Club; Glee Club; Local Editor of the "Torch." Glee Club; Local Editor of the "Torch;" May Queen, '27.



ADA LOU ROWE

Claxton, Georgia

Entered, '25; Y. W. C. A., '25-'26;
Oglethorpe Literary Society, '25-'27;
Dramatic Club, '25-'27; President, '26;
Whistler Art Club, '25-'26; Vice-Presi-
dent, '26.



ALBERTA SCARBORO

Garfield, Georgia

Entered, '26; President of McDowell
Music Club, '27; Stephens Literary So-
ciety, '26-'27; Critic, first term; Group
Leader of Vesper; Student Council, '26-
'27; Glee Club, '26-'27; Secretary of
Sophomore Class, '26-'27; Reporter for
Whistler Art Club; Bulloch County
Club; Athletic Club.





DOROTHY THOMAS

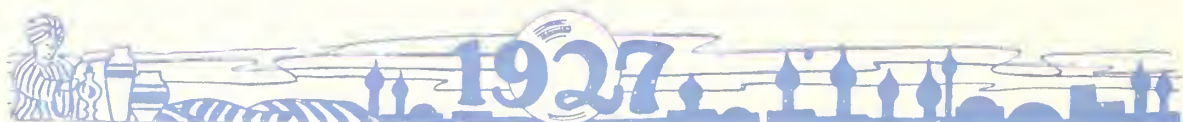
Jacksonville, Florida

Entered, '25; Oglethorpe Literary Society, '25-'27; President, third term, '26; Treasurer of Glee Club, '25-'27; Treasurer of Y. W. C. A., '25-'26; Whistler Art Club, '25-'27; President of Home Economics Club, '25-'27; Group Leader of Vesper; Verse Editor of "Torch," '25-'26; G. T. O. B. Club, '25-'26; H. O. Z. Club, '26-'27; Editor-in-Chief of "Reflector," '27.

WILLIE BELLE WATERS

Statesboro, Georgia

Entered, '25; Stephens Literary Society; Athletic Club, '25-'26; Education Club, '25-'26; Glee Club, '25-'27; Music Club, '26-'27; Y. W. C. A., '25-'26; G. T. O. B., '25-'26; H. O. Z. Club, '26-'27; Group Leader of Vesper; Whistler Art Club, '26-'27; Art Editor of the "Reflector," '27.





J. B. WILSON

Summit, Georgia

Entered, '26; Oglethorpe Literary Society.



Service

*It's just the little things that count;
They make the world a better place;
Into a lonely heart they mount
To drown the sorrows of the race.*

*A smile is such a little thing
When work and giving seem so much;
But there is service that will ring
In almost every little thing.*

LUNEIL BELL.





Smiles

When everything around you seems wrong,
And troubles meet you all the while,
Pucker up as you go along,
And meet all trouble with a smile.

'Tis easy enough perhaps to frown,
And trudge along with sullen face;
But better by far when cast down,
To smile and brighten up the place.

When heavy the load that you may bear,
And dark and rough may seem the way,
If unpleasant remarks you hear,
Dismiss them with smiles and be gay.

Be a Pollyanna number two,
And always wear a cheery smile;
In no matter what you may do,
Life will ever seem more worth while.

A frown, Dame Care will delight to see,
And she loves to hear every sigh;
But if your face should smiling be,
Quickly away the Dame will fly.

When you smile at work or at play,
Your friends will always smile with you;
And brighter will be every day,
And lighter all the work you do.

There's no need to try and deny it,
It's a good old world at least;
There is no cause to frown a bit,
Go on and of it make the best.

Glory does not come to him who grieves
O'er his undone task with a frown;
The one with a smile ever achieves,
And is always on top—not down.

—MARGARET CONE.





FRESHMAN



REFLECTOR



KATHERINE BRANNEN
Guyton, Georgia

LOUISE NEAL
Wrightsville, Georgia

TRUE WATSON
Metter, Georgia

LOIS HUTCHINSON
Adrian, Georgia

DOY GAY
Portal, Georgia

JULIA HARGROVE
Stillmore, Georgia

SALLIE MAUDE TEMPLES
Statesboro, Georgia

GRACE BAILEY
Summertown, Georgia



REFLECTOR

MAURINE DONALDSON
Statesboro, Georgia

EVELYN BLOUNT
Vidalia, Georgia

EARLE LEE
Leefield, Georgia

FRANCES MILNER
Cicola, Georgia

EVIA DELL KEA
Modoc, Georgia

RUTH COLEMAN
Graymont, Georgia

EUNICE WILSON
Pulaski, Georgia

INEZ EDENFIELD
Stillmore, Georgia





REFLECTOR



GLADYS SCARBORO
Garfield, Georgia

BURMAN BOWEN
Register, Georgia

RUFUS MARTIN
Millen, Georgia

HENRY PRICE
Harrison, Georgia

GLADYS DuBOSE
Ludowici, Georgia

SEABORN NEWTON
Butts, Georgia

FRANK DeLOACH
Register, Georgia

IRENE POWELL
Wrightsville, Georgia



REFLECTOR

JONNIE KENT
Garfield, Georgia

JOHNIE CLYDE RINER
Adrian, Georgia

MAGGIE NEWTON
Butts, Georgia

MONROE WARREN
Stillmore, Georgia

LOY WATERS
Summit, Georgia

C. G. ROUNTREE
Egypt, Georgia

SARA HALL
Garfield, Georgia

MARY BRINSON
Millen, Georgia





REFLECTOR



LENIE MAE BLAND
Statesboro, Georgia

THEO ROBSON
Totensend, Georgia

HAZEL DUNLAP
McCormick, South Carolina

MELBA DEKLE
Statesboro, Georgia

CAROLYN LEE
Statesboro, Georgia

T. Y. WILLIS
Adrian, Georgia

MYRTLE HUTCHINSON
Adrian, Georgia

W. A. BOWEN
Portal, Georgia



REFLECTOR

LOUISE THOMPSON
Graymont, Georgia

EARLIE LOVE
Wesley, Georgia

W. L. HALL
Statesboro, Georgia

CELESTIAL KNOTTS
Cope, South Carolina

WALDO PAFFORD
Douglas, Georgia

DORRIS LINDSEY
Statesboro, Georgia

RONENA JOINER
Tennille, Georgia

HELEN CONE
Statesboro, Georgia



REFLECTOR



1927



SENIOR



REFLECTOR



LOLALE FOUNTAIN

Adrian, Georgia

FAVORITE PASTIME: Visiting mother.

FAVORITE EXPRESSION: "Stop it!"

APPEARANCE: Quiet.

AMBITION: Ph.D.

A. G. MIDDLETON

Townsend, Georgia

FAVORITE PASTIME: Reading.

FAVORITE EXPRESSION: "Hold her Newt!"

APPEARANCE: Fat.

AMBITION: To be a toe dancer.

FANNIE BELLE HOLTON

Soperton, Georgia

FAVORITE PASTIME: Having fun.

FAVORITE EXPRESSION: "Fiddle sticks!"

APPEARANCE: Always the same.

AMBITION: To pass.

GEORGIA JOHNSON

Garfield, Georgia

FAVORITE PASTIME: Playing piano.

FAVORITE EXPRESSION: "Let me see!"

APPEARANCE: Pleasing.

AMBITION: Have a good time.

IRMA DELOACH

Register, Georgia

FAVORITE PASTIME: Playing ball.

FAVORITE EXPRESSION: "Eh-oh!"

APPEARANCE: Mighty Lak' a Rose.

AMBITION: To be an old maid.

DAISY FIELDS

Garfield, Georgia

FAVORITE PASTIME: Playing ball.

FAVORITE EXPRESSION: "All right!"

APPEARANCE: Lak' a daisy.

AMBITION: To ring goals.



REFLECTOR

GEORGE MATHIS

Oliver, Georgia

FAVORITE PASTIME: Basket-ball.
FAVORITE EXPRESSION: "Hit 'em hard!"
APPEARANCE: Lanky.
AMBITION: Graduate from G. N. S.

DEVANN OVERSTREET

Sylvania, Georgia

FAVORITE PASTIME: Loafing.
FAVORITE EXPRESSION: "That's a fact!"
APPEARANCE: Tall and ugly.
AMBITION: Graduate from G. N. S.

RITA MAE NEVILLS

Pulaski, Georgia

FAVORITE PASTIME: Talking.
FAVORITE EXPRESSION: "That's all right!"
APPEARANCE: Giggling.
AMBITION: To have no freckles.

BILL COLEMAN

Decatur, Georgia

FAVORITE PASTIME: Playing ball.
FAVORITE EXPRESSION: "Atta Boy!"
APPEARANCE: Bashful.
AMBITION: To be a leader.

MONTGOMERY PRESTON

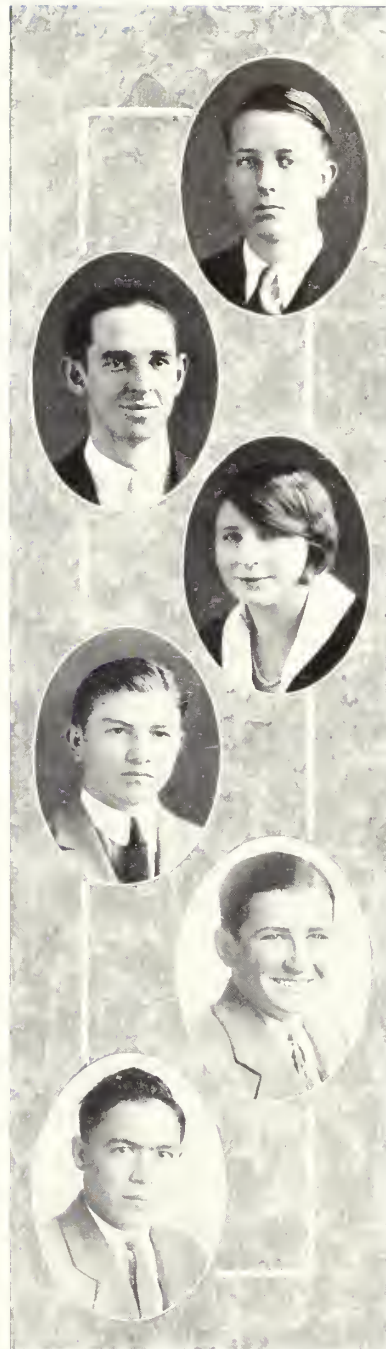
Statesboro, Georgia

FAVORITE PASTIME: Courting.
FAVORITE EXPRESSION: "Dadsham!"
APPEARANCE: Devilish.
AMBITION: Get married.

ANSEL FRANKLIN

Kathwood, South Carolina

FAVORITE PASTIME: Loafing.
FAVORITE EXPRESSION: "Bet two bits!"
APPEARANCE: Expressionless.
AMBITION: Haven't found it.





REFLECTOR



EDCAR RUSHTON

Rockyford, Georgia

FAVORITE PASTIME: Reading literature.

FAVORITE EXPRESSION: "Ride 'em, cowboy!"

APPEARANCE: Tall.

AMBITION: To complete English 4.

MARIE MICKELL

Statesboro, Georgia

FAVORITE PASTIME: Going to town.

FAVORITE EXPRESSION: "Quit!"

APPEARANCE: Nice.

AMBITION: To be pretty.

LERA EVERETT

Oliver, Georgia

FAVORITE PASTIME: Playing ball.

FAVORITE EXPRESSION: "I declare!"

APPEARANCE: Blonde.

AMBITION: To be a good cook.

GRADY WILSON

Summit, Georgia

FAVORITE PASTIME: Playing ball.

FAVORITE EXPRESSION: "Gosh!"

APPEARANCE: Lazy.

AMBITION: To pass English.

FRANCIS MATHIS

Oliver, Georgia

FAVORITE PASTIME: Athletic work.

FAVORITE EXPRESSION: "By Jove!"

APPEARANCE: Brawny.

AMBITION: Solve problems.

VELLIE JONES

Metter, Georgia

FAVORITE PASTIME: Basket-ball.

FAVORITE EXPRESSION: "Ain't that pert!"

APPEARANCE: Short and plump.

AMBITION: To be basket-ball star.



REFLECTOR

CARLEEN AARON

Aaron, Georgia

FAVORITE PASTIME: Dancing.
FAVORITE EXPRESSION: "Hurry back!"
APPEARANCE: Sleepy.
AMBITION: To travel.

ARLEY BRANNEN

Statesboro, Georgia

FAVORITE PASTIME: Kiding in a Ford.
FAVORITE EXPRESSION: "Eh-oh!"
APPEARANCE: Lively.
AMBITION: To get to History on time.

LLOYD EVANS

Newington, Georgia

FAVORITE PASTIME: Playing rook.
FAVORITE EXPRESSION: "Hold 'er Newt!"
APPEARANCE: Friendly.
AMBITION: To do good.

EMELYN KING

Riceboro, Georgia

FAVORITE PASTIME: Playing tennis.
FAVORITE EXPRESSION: "Such is life!"
APPEARANCE: Friendly.
AMBITION: To learn to use my head.

ROBERT MOBLEY

Uvalda, Georgia

FAVORITE PASTIME: Going to a show.
FAVORITE EXPRESSION: "I don't know!"
APPEARANCE: Jolly.
AMBITION: To be an electrician.

ODIS DELOACH

Register, Georgia

FAVORITE PASTIME: Traveling.
FAVORITE EXPRESSION: "I haven't any!"
APPEARANCE: Ambitious.
AMBITION: Be good to others.

DELL HAGIN

Statesboro, Georgia

FAVORITE PASTIME: Reading.
FAVORITE EXPRESSION: "Let's get thoo' with it."
APPEARANCE: Tall and skinny.
AMBITION: To be naughty but nice.





REFLECTOR



RALPH DIXON

Sylvania, Georgia

FAVORITE PASTIME: Breaking hearts.
FAVORITE EXPRESSION: "How's the girl!"
APPEARANCE: Handsome.
AMBITION: To break more hearts.

ELIZABETH STEVENS

Dorchester, Georgia

FAVORITE PASTIME: Playing tennis.
FAVORITE EXPRESSION: "I don't know!"
APPEARANCE: Peaceful.
AMBITION: To be a chorus girl.

ARPHELIA HILBUN

Scott, Georgia

FAVORITE PASTIME: Reading.
FAVORITE EXPRESSION: "Hello, Pete!"
APPEARANCE: Modest.
AMBITION: To teach History at Peabody.

HAROLD BAGBY

Pulaski, Georgia

FAVORITE PASTIME: Playing basket-ball.
FAVORITE EXPRESSION: "Oh, Dumdum!"
APPEARANCE: Lively.
AMBITION: To get a good-looking wife.

CALERIA MOSS

Carnesville, Georgia

FAVORITE PASTIME: Sewing.
FAVORITE EXPRESSION: "Hot-Dog!"
APPEARANCE: Chunky.
AMBITION: To help others.

MINNIE LEE MARSH

Portal, Georgia

FAVORITE PASTIME: Sewing.
FAVORITE EXPRESSION: "Oh, Gee!"
APPEARANCE: Low.
AMBITION: To help others.



JUNIOR



REFLECTOR



ORA COWART
Cobbtown, Georgia

ELSIE MAE GOODMAN
Orangeburg, South Carolina

CLYDE DAVIS
Millen, Georgia

THOMAS EDENFIELD
Oliver, Georgia

ESTELLE ZEIGLER
Ogeechee, Georgia

DORIS LANIER
Millen, Georgia

MOSES MC NURE
Garfield, Georgia

FRED HENDRIX
Metter, Georgia

JAMES PRICE
Oak Park, Georgia

D. F. WARNOCK
Tarrytown, Georgia

JEANNETTE GRACE
Ucalda, Georgia





FREDERICK JONES
Millen, Georgia

ELTON WILSON
Statesboro, Georgia

PLANCHE FIELDS
Garfield, Georgia

CHARLEY BUIE
Pulaski, Georgia

NINA BELLE BANKS
Statesboro, Georgia



ACTIVITIES





Latin Club

COLORS: *Purple and Gold*

FLOWER: *Violet*

MOTTO: *Ad Astra Per Aspera*

OFFICERS

FRANCIS MATHIS	<i>President</i>
LOLALE FOUNTAIN	<i>Vice-President</i>
FRED HENDRIX	<i>Secretary and Treasurer</i>
MISS FRANCES STUBBS	<i>Sponsor</i>

MEMBERS

W. A. BOWEN	GEORGIA JOHNSON
BILL COLEMAN	FRANCIS MATHIS
LOLALE FOUNTAIN	MOSES MCNIRE
FRED HENDRIX	ADA LOU ROWE
D. F. WARNOCK	





The Oglethorpe Society

COLORS: *Gold and White*

FLOWER: *White Rose*

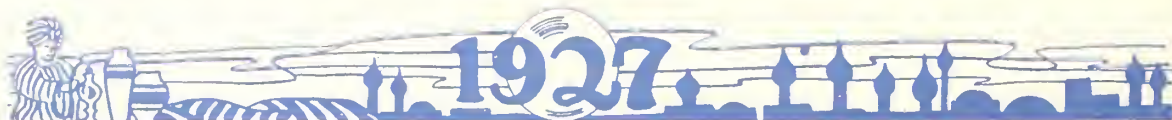
MOTTO: *"With the ropes of the past we will ring the bells of the future"*

OFFICERS

FRANCIS MATHIS	<i>President</i>
FANNIE BELLE HOLTON	<i>Vice-President</i>
ELIZABETH STEVENS	<i>Secretary-Treasurer</i>
EMELYN KING	<i>Critic</i>
MARY LOU COWART	<i>Chaplain</i>
MR. AND MRS. SINGLEY . . .	<i>Faculty Advisors</i>
ARCHIE CARITHIERS	<i>Mascot</i>

MEMBERS

BRANNEN, ARLEY	LEE, BERNICE
BRANNEN, KATHERINE	LEE, EARLE
COWART, ORA	LINDSEY, DORRIS
DELOACH, ODIS	LOVE, EARLIE
DUNLAP, HAZEL	MATHIS, FRANCIS
FOUNTAIN, LOLALE	MILNER, FRANCES
FRANKLIN, ANSEL	MERCER, RUPERT
GRACE, JEANNETTE	NEWTON, MARGARET
HAGIN, DELL	RINER, JOHNNIE
HENDRIX, FRED	ROWE, ADA LOU
HILBUN, ARPIHELLA	RUSHTON, EDCAR
HOLTON, FANNIE BELL	STEVENS, ELIZABETH
HUTCHINSON, LOIS	THOMAS, DOROTHY
HUTCHINSON, MYRTLE	WATSON, TRUE
JOHNSON, GEORGIA	WILSON, J. B.
KING, EMELYN	WILSON, ELTON
KNOTTS, CELESTIAL	





REFLECTOR



Oglethorpe Society



The Stephens Society

OFFICERS

MONROE WARREN	<i>President</i>
GRACE BAILEY	<i>Vice-President</i>
EUNICE WILSON	<i>Secretary</i>
EVELYN BLOUNT	<i>Treasurer</i>
FRANK DeLOACH	<i>Chaplain</i>
EVIA DELL KEA	<i>Pianist</i>
MISS TUBB	<i>Sponsor</i>

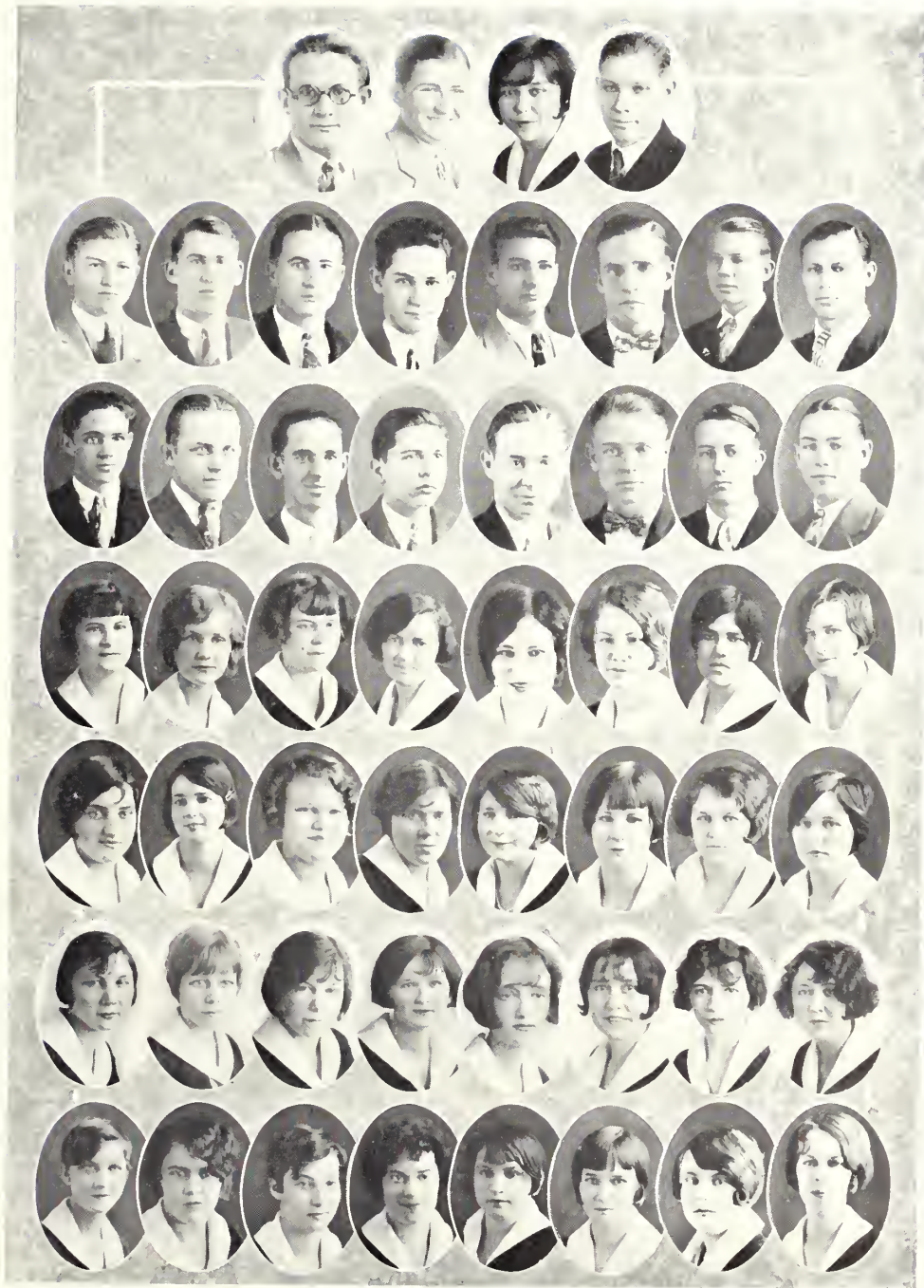
MEMBERS

AARON, CARLEEN	KEA, EVIA DELL
BAGBY, HAROLD	KENT, JONNIE
BAILEY, GRACE	LEE, CAROLYN
BELL, LUNEIL	LEE, ARRIE LOU
BLAND, LEXIE MAE	MARSH, MINNIE LEE
BLOUNT, EVELYN	MARTIN, RUFUS
BOWEN, W. A.	MATHIS, GEORGE
BOWEN, BURMAN	McNURE, MOSES
BRINSON, MARY	MOBLEY, ROBERT
BROWN, MYRENE	MOSS, CALERIA
COLEMAN, RUTH	NEAL, LOUISE
COLEMAN, BILL	NEVILLS, RITA MAE
DAVIS, CLYDE	NEWTON, SEABORN
DeLOACH, IRMA	OVERSTREET, DeVANN
DeLOACH, FRANK	PAFFORD, WALDO
DIXON, RALPH	POWELL, IRENE
DuBOSE, MARION	PRESTON, MONTGOMERY
DuBOSE, GLADYS	PRICE, WILLIAM HENRY
DURDEN, INEZ	ROBSON, THEO
EVANS, LLOYD	ROUNTREE, C. G.
FIELDS, BLANCHE	SCARBORO, GLADYS
FIELDS, DAISY	SCARBORO, ALBERTA
GAY, DOY	THOMPSON, LOUISE
GOODMAN, ELSIE MAE	WATERS, LOY
HALL, W. L.	WATERS, WILLIE BELL
HALL, SARAH	WARREN, MONROE
HARGROVE, JULIA	WARNOCK, D. F.
JOHNSON, THELMA	WILLIS, T. Y.
JOINER, RONENA	WILSON, EUNICE
JONES, VELLIE LEE	WILSON, GRADY
JONES, FREDERICK	ZEIGLER, ESTELLE





REFLECTOR



Stephens Society



Richards Home Economics Club

MOTTO: *Patience wins*

OFFICERS

DOROTHY THOMAS	President
SARAH HALL	Vice-President
DELL HAGIN	Secretary
ELIZABETH STEVENS	Treasurer
MISS BRUCE AND MISS TRUSSELL	Sponsors
FRANCES BARRON	Mascot

MEMBERS

AARON, CARLEEN	LEE, CAROLYN
BRANNEN, ARLEY	MILNER, FRANCES
BROWN, MYRENE	MOSS, CALERIA
COLEMAN, RUTH	NEVILLS, RITA MAE
COWART, ORA	NEWTON, MARGARET
GOODMAN, ELSIE MAE	RINER, JOHNNIE
GRACE, JEANNETTE	ROBSON, THEO
HAGIN, DELL	STEVENS, ELIZABETH
HALL, SARAH	THOMAS, DOROTHY
HOLTON, FANNIE BELL	THOMPSON, LOUISE
JOHNSON, GEORGIA	WATSON, TRUE
JONES, VELLIE LEE	ZEIGLER, ESTELLE
KING, EMELYN	





Whistler Art Club

COLORS: *Yellow and White*

FLOWER: *Shasta Daisy*

OFFICERS

CELESTIAL KNOTTS	<i>President</i>
ADA LOU ROWE	<i>Vice-President</i>
JOHNNIE CLYDE RINER	<i>Secretary and Treasurer</i>
MRS. BURRUS MATHEWS	<i>Sponsor</i>
MARGARET MATHEWS	<i>Mascot</i>

MEMBERS

BAILEY, GRACE	LINDSEY, DORRIS
BRANNEN, KATHERINE	MILNER, FRANCES
COLEMAN, RUTH	NEAL, LOUISE
COWART, MARY LOU	NEWTON, MARGARET
DUNLAP, HAZEL	POWELL, IRENE
HALL, SARAH	RINER, JOHNNIE
HARGROVE, JULIA	ROWE, ADA LOU
JOHNSON, THELMA	SCARBORO, GLADYS
KEA, EVIA DELL	SCARBORO, ALBERTA
KNOTTS, CELESTIAL	THOMAS, DOROTHY
LEE, CAROLYN	WILSON, EUNICE
LEE, ARRIE LOU	WATERS, WILLIE BELLE
LEE, EARLE	





REFLECTOR



The Torch Staff

LUNEIL BELL
EARLIE LOVE
BERNICE LEE
FRANK DELOACH

Editor-in-Chief
Assistant Editor-in-Chief
Local Editor
"Scrap Bag" Editor

FRANCIS MATHIS
CHARLIE BUE
MOSES MCNIRE
MISS TURB

Business Manager
Assistant Business Manager
Joke Editor
Faculty Adviser



McDowell Music Club

ALBERTA SCARBORO
SARAH HALL

President
Vice-President

DAISY FIELDS
MISS COLEMAN

Secretary-Treasurer
Sponsor

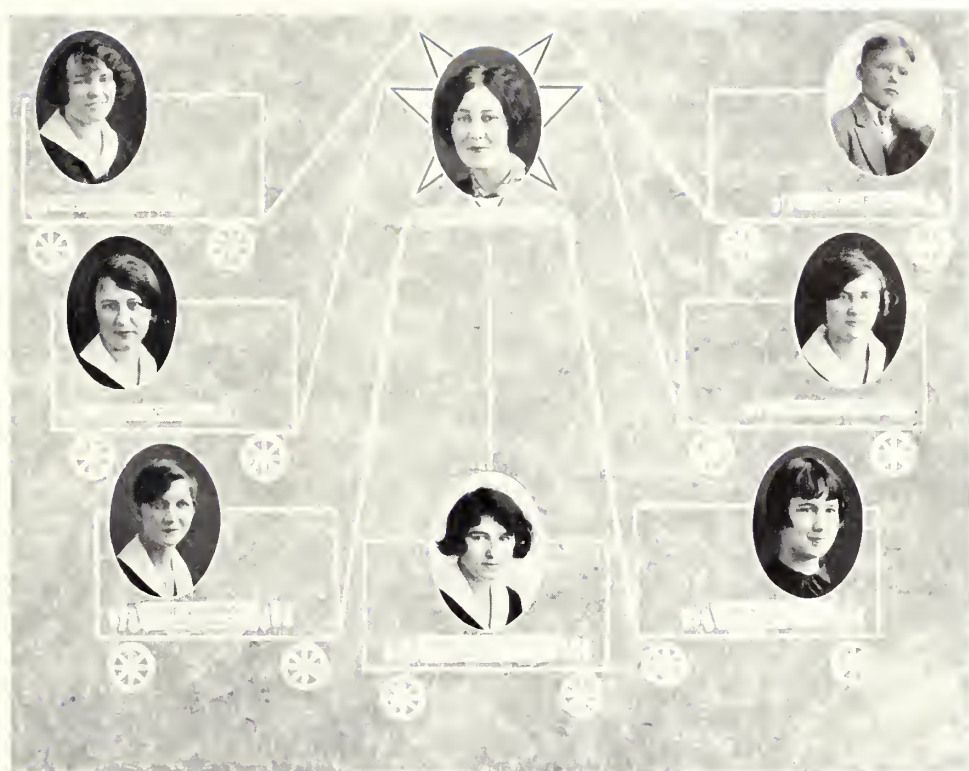
GRACE BAILEY
LUNEIL BELL
MARY LOU COWART

LUCILE FUTELLE
JEANNETTE GRACE
GEORGIA JOHNSON

EMELYN KING
BERNICE LEE
EARLIE LEE

MINNIE LEE MARSH
ROBERT MOBLEY

WILLIE BELL WATERS
ESTELLE ZEIGLER



The Curtain Raisers

COLORS: Blue and Silver

FLOWER: Star Lily

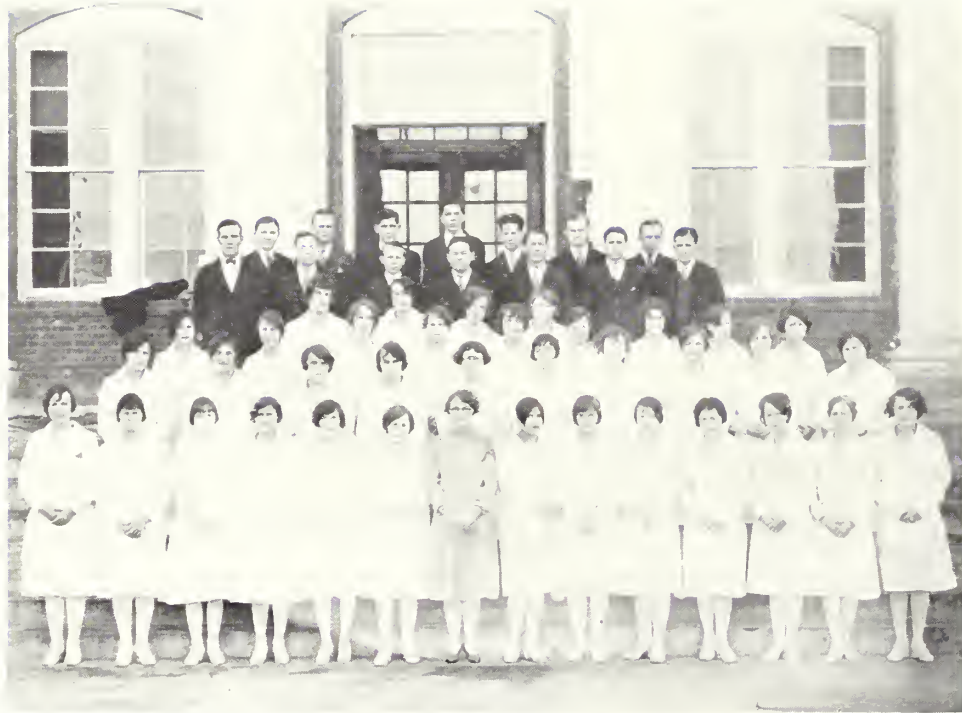
MOTTO: "Hitch your wagon to a star"

Place of Meeting: Under the stars

Occupation: Star gazing

Favorite Poem: "Twinkle, twinkle, little star"





Glee Club

OFFICERS

LOY WATERS *President*
 DOROTHY THOMAS *Secretary and Treasurer*
 MISS COLEMAN *Sponsor*

MEMBERS

AARON, CARLEEN
 BAILEY, GRACE
 BELL, LUNEIL
 BAGBY, HAROLD
 BLOUNT, EVELYN
 BOWEN, BURMAN
 BOWEN, W. A.
 BRINSON, MARY
 BUTE, CHARLIE
 COLEMAN, RUTH
 COLEMAN, BILL
 COWART, MARY LOU
 DELOACH, FRANK
 DELOACH, IRMA
 DIXON, RALPH
 DUBOSE, MARION
 DUNLAP, HAZEL

FIELDS, DAISY
 GOODMAN, ELSIE MAE
 GRACE, JEANNETTE
 HALL, SARAH
 HAGIN, DELL
 HARGROVE, JULIA
 HUTCHINSON, MYRTLE
 JONES, VELLIE
 JOINER, RONENA
 JOHNSON, THELMA
 JONES, FREDERICK
 KEA, EVIA DELL
 KENT, JONNIE
 KING, EMELYN
 LEE, BERNICE
 LEE, CAROLYN
 MARSH, MINNIE LEE

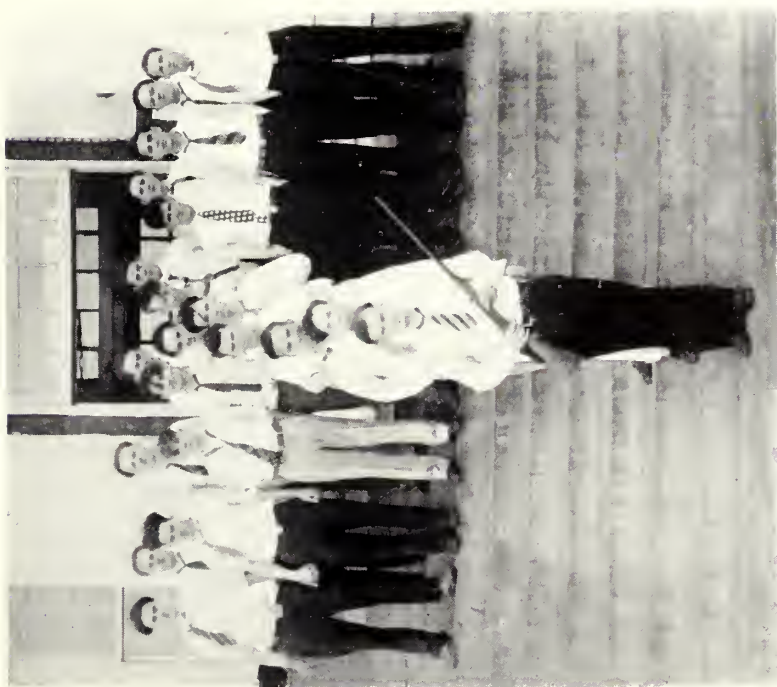
MARTIN, RUFUS
 MORLEY, ROBERT
 NEAL, LOUISE
 NEVILLS, RITA MAE
 NEWTON, MAGGIE
 PAFFORD, WALDO
 PRESTON, MONTGOMERY
 RINER, JOHNNIE CLYDE
 ROUNTREE, C. G.
 SCARBORO, ALBERTA
 SCARBORO, GLADYS
 THOMPSON, LOUISE
 THOMAS, DOROTHY
 WARREN, MONROE
 WATERS, WILLIE BELLE
 TRUE, WATSON
 ZEIGLER, ESTELLE





H. O. Z. Club

- | | |
|-------------------|-------------------------|
| MAGGIE NEWTON | President |
| CAROLYN LEE | Vice-President |
| EMELYN KING | Secretary and Treasurer |
| EVELYN BLOUNT | JOHNIE RISER |
| MARION DUROSE | ELIZABETH STEVENS |
| GLADYS DUROSE | DOROTHY THOMAS |
| ELSIE MAE GOODMAN | WILLIE BELLE WATERS |
| JEANNETTE GRACE | TRUE WATSON |
| | DELL HAGIN |
| | FANNIE BELLE HOLTON |
| | EARLE LEE |
| | BERNICE LEE |



Tiger Club

- | | |
|----------------|---------------------|
| MONROE WARREN | President |
| FRANCIS MATHIS | Vice-President |
| EARLIE LOVE | Secretary |
| LOY WATERS | Treasurer |
| FRANK DELGACH | DEVANN OVERSTREET |
| OTIS DELGACH | LOYD EVANS |
| ROBERTS MARTIN | THOMAS EDEFIELD |
| W. L. HALL | EDGAR RUSHION |
| C. G. ROUNTREE | FREDERICK JONES |
| GEORGE MATHIS | WILLIAM HENRY PRICE |
| | W. A. BOWEN |
| | BURMAN BOWEN |
| | WALDO RUFFORD |
| | RALPH DIXON |
| | ROBERT MOBLEY |
| | CHARLIE BUTE |



Reflector Staff

DOROTHY THOMAS	<i>Editor-in-Chief</i>
HELEN CONE	<i>Assistant Editor-in-Chief</i>
THELMA JOHNSON	<i>Business Manager</i>
W. L. HALL	<i>Assistant Business Manager</i>
ELOISE EDENFIELD	<i>Literary Editor</i>
WILLIE BELLE WATERS	<i>Art Editor</i>
LOLALE FOUNTAIN	<i>Feature Editor</i>
DELL HAGIN	<i>Photographic Editor</i>
D. F. WARNOCK	<i>Athletic Editor</i>
BLANCHE FIELDS	<i>Club Editor</i>
MISS TUBB	<i>Sponsor</i>



REFLECTOR



Varsity Team

ALEX TIPPINS
EARLIE LOVE
FRANCIS MATHIS
GRADY WILSON
W. L. HALL
PARKER BRYANT

INSERT—E. G. CROMARTIE

Right End
Right Tackle
Right Guard
Center
Left Guard
Left Tackle

Coach

DOY GAY
LOY WATERS
SEABORN NEWTON
JOE PRITCHARD
DELMAS RUSHING

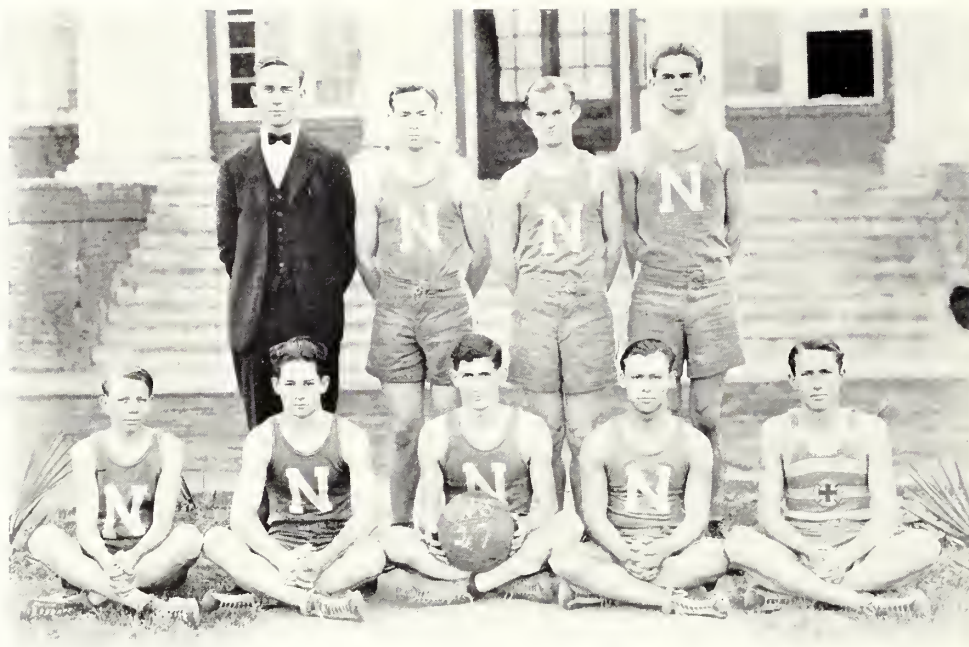
INSERT—ANSEL FRANKLIN

Left End
Quarterback
Right Halfback
Left Halfback
Fullback

Captain



Football Squad



Varsity Team

C. G. ROUNTREE	Right Guard	MONROE WARREN	Right Forward
FRANCIS MATHIS	Left Guard	WILLIAM HENRY PRICE	Left Forward
FRANK DeLOACH	WALDO PAFFORD	T. Y. WILLIS	Center
	BURMAN BOWEN	Coach	W. A. BOWEN
	MR. SINGLEY		



High School Team

HAROLD BAGBY	} Forwards	D. F. WARNOCK	} Guards
EDCAR RUSHTON		FRANCIS MATHIS	
MONTGOMERY PRESTON		GEORGE MATHIS	
Opis DeLoach	Center		



Varsity Team

DORRIS LINDSEY	Center	CELESTIAL KNOTTS	Forwards
MARY BRINSON	Side Centers	ARRIE LOU LEE	Forwards
GRACE BAILEY		TRUE WATSON	
RONENA JOINER	Guards	MISS BRUCE	Couch
MYRENE BROWN			
MARION DUBOSE			
MAGGIE NEWTON			



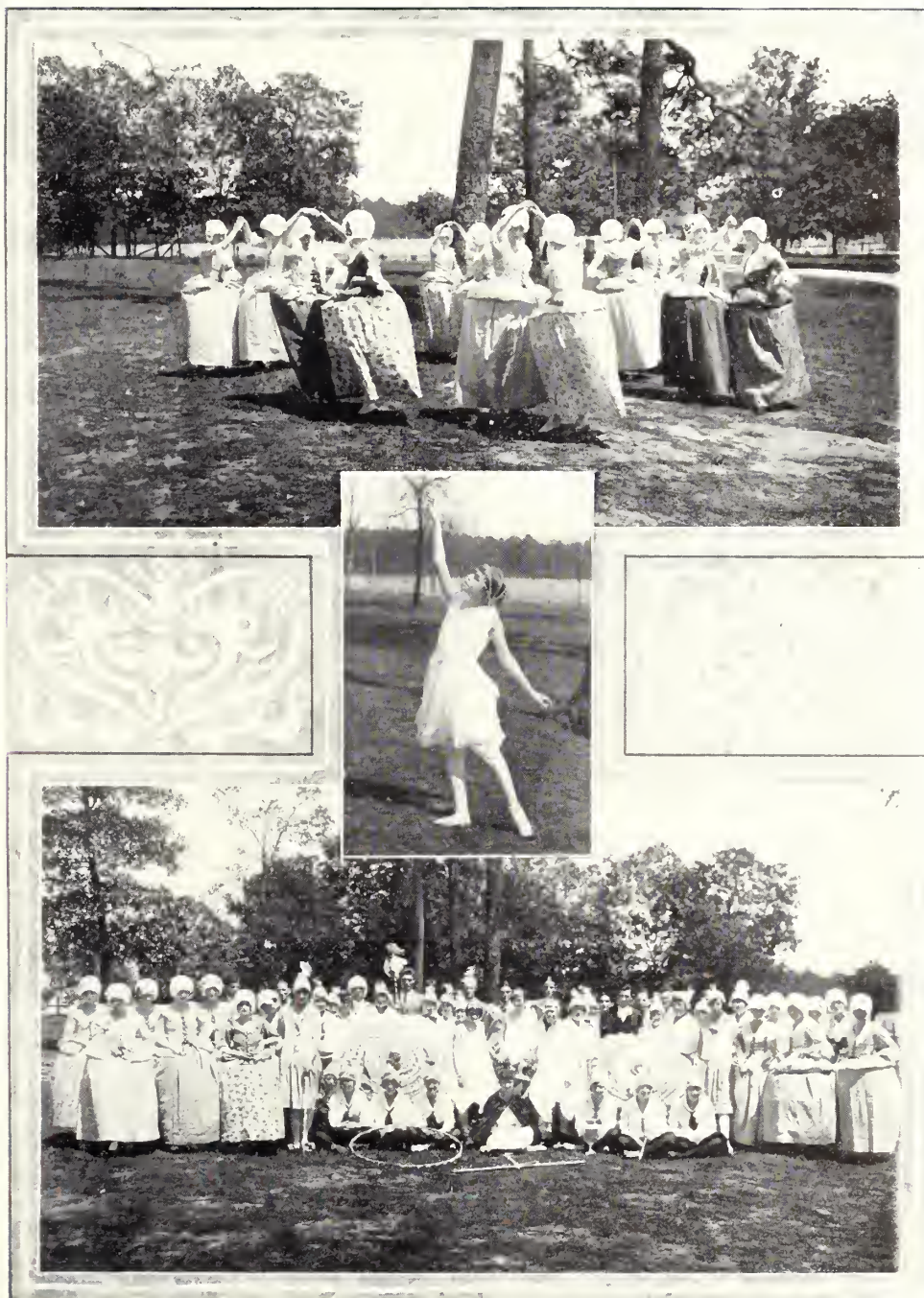
High School Team

BLANCHE FIELDS	Center	VELLIE LEE JONES	Side Center
DAISY FIELDS	Forwards	RITA MAE NEVILLS	Guards
MINNIE LEE MARSH		CARLEEN AARON	
		IRMA DELOACH	

REFLECTOR



REFLECTOR



Field Day Pictures



Athletic News

The football season just closed was the most successful the college has had for some time. The team played nine games and lost only three. Strong team work was displayed and all the boys proved themselves worthy of the praise that they received.

Under the leadership of Waldo Pafford, captain of the college team, the basketball team had an interesting season. All the players showed a fine spirit throughout.

Every student shares in the enthusiasm and school spirit manifested on the annual Field Day. The student body, previously divided into groups, known as Hustlers and Hornets, contends in songs and yells for their respective groups.

Following the festival of the crowning of the queen various competitive events are engaged in, including the hoop race, the torch race, and the spectacular chariot race. There are relays in which other members from both groups participate.

The second part of the annual Field Day program is an athletic meet. The groups contend in baseball, tennis, and track events: high jump, broad jump, pole vault, 100-yard dash, hurdling, discus throw, and shot put.

The events of the afternoon culminate in the presentation of a silver cup to the side winning the largest number of points. This trophy, presented by Mr. D. B. Turner, is to be handed down from year to year to the side winning the annual Field Day.

GAMES OF 1926-1927

Normal defeated Douglas 6-0.

Normal tied Piedmont 0-0.

Normal defeated Benedictine 13-0.

Normal was defeated by G. M. C. 12-0.

Normal was defeated by Tifton 6-0.

Normal was defeated by A. R. C. 54-6.

Normal defeated B. P. I. 12-0.

Normal defeated Fort Screven 14-0.

Normal defeated B. P. I. 7-6.

Normal was defeated by Tifton in basket-ball 27-17.

Normal took a trip down in South Georgia and was defeated in the four games.

Normal was defeated by Thomas A. Jones 30-28.

Normal defeated B. C. 26-7.

Normal defeated A. R. C. 31-22.

Normal defeated B. P. I. 19-14.

Normal was defeated by A. R. C. 35-26.

Normal was defeated by B. C. 15-14.



FEATURES





DOROTHY ANDERSON
Most Beautiful



LOLALE FOUNTAIN
Best Student



THELMA JOHNSON
Most Attractive
Most Popular



TRUE WATSON
Best Athlete

REFLECTOR



"THE FEAST OF THE RED CORN"
Presented by the Glee Club



"MANLESS JAZZ WEDDING"
Presented by the Faculty

REFLECTOR

Painless Extraction

Favorite
Her Big American Hero

Romance
Not So Tame

He Tempted Me

Love
THE WORLD'S BEST

Can't You Women Behave?

Life

Discovered!
Kissing for Keeps

THE SILENT DRAMA
He Got the Job

WOW!
"Blonde or Brunette"

Safe
you pay nothing

LESSONS FREE
does kill germs

One On Mama

Self-Made
Brother or Lover?

Why Not?

The Kick Out of It

She Tempted Him
How to Hold a Man's Love

Do it in 5 Minutes
That's How It Was

Delicious
THICK LIPS REDUCED!

Red Hot

PARA LOVES MAMMAS
Regular 50¢ Value for 25¢

Trade In All Trades
Delicious little dolls of engagement saved through my lens

He Knew What To Do

Do You Blame Her?

NO EXPERIENCE NECESSARY
Wanted!

For Colds

Here's how to be POPULAR

Habit Is Powerful

- Insist!

is not a poison

Art

Going Strong

For the man who feels entitled to life's better things

As a Mouth Wash

The Cheerful Giver
We All Do

When there's a pretty girl around...

delightful and so inexpensive

Scrap Page



FRESHMAN'S HISTORY NOTES

History

History is a systematic record of past events —

Mr. Singley

I met

Let me have a card
for English? Say —

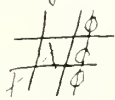
M. W.
He's a popular
rat.

He gets in by
grawing.



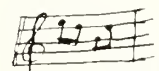
{ I bet we'll have
guts for break-
fast.

Maggie Newton - Mary
Fusker Mathis - Mary



"Dumbell" —

Mr. Rufus Martin.
Mrs. Rufus Martin.



Monroe thinks he's big.

show me the way to go home

Lincoln's most striking qualities were common
sense —

System and Solving Problems

See! have we got to hand
in our papers?

If this were only
the end —

♫ The curfew tolls
the knell of parting —

Amen brother —

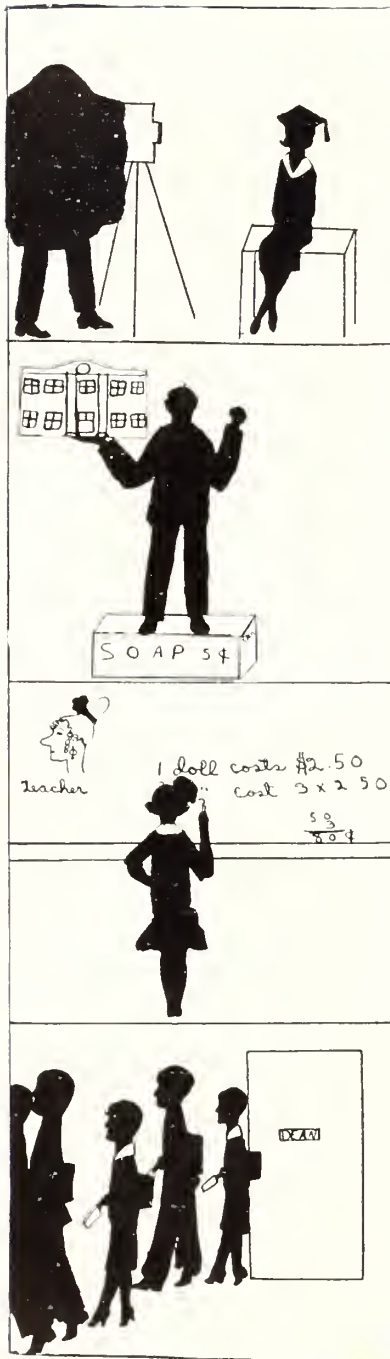
Did he say to take the next chapter?



History Notes



REFLECTOR



The Sophomores go in earnest glee,
To make their pictures for us to see;
The caps this time are worn with pride,
For in the annual they must look dignified.

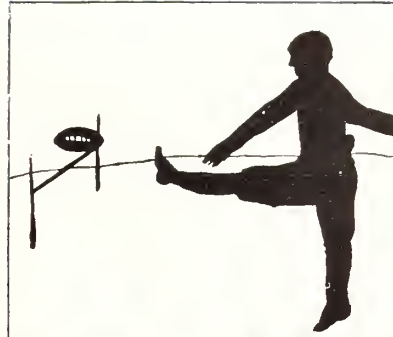
If we, as Mr. Wells, would do our part,
It wouldn't take long to sell our school;
For this we know he has at heart,
And we all try to follow his rule.

If system is used all the time,
Problems can be solved we find;
For Mr. Wells has truly resolved
By using system his problems to solve.

When we're absent from a class,
On our excuse the Dean must pass;
A white slip to the teacher show,
Or to the class we can not go.

REFLECTOR

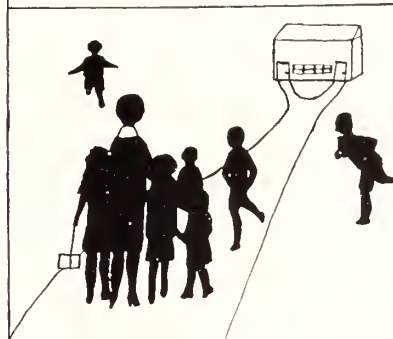
Of our team we are real proud,
And on the sidelines we cheer so loud;
The boys played hard for the game,
And that's the way they won their fame.



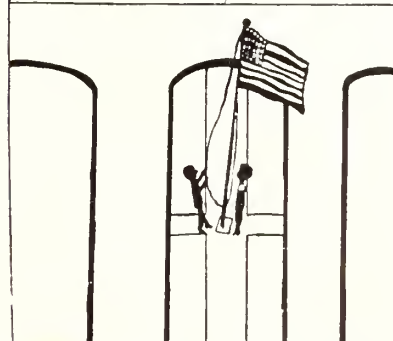
Paper, sticks and trash of all styles
Into the trash box must be piled;
For not a scrap must be seen,
We try to keep our campus clean.



The model school is growing fast,
We have students in every class;
The college girls go there to teach
After they hear Mr. Mathews speak.



Early every morning the flag is raised,
At first the Sophs got the praise;
But now the Freshies deem it fit,
With their partners to do their bit.





Senior Diary

- SEPTEMBER 14—School opens with a boom! Everybody is full of energy and eager to start working.
- SEPTEMBER 16—The thrills of initiation have come at last. What a glorious time we'll have now.
- SEPTEMBER 17—All of our fun was destroyed, for Mr. Anderson informed us all "hazing" must stop. Oh, horrors!
- OCTOBER 1—First football game! Georgia Normal wins over Douglas A. & M., 6-0. Hurrah! for G. N. S.
- OCTOBER 2—Football party to celebrate the victory. Girls play football game with "eggs." Oh, such excitement.
- OCTOBER 15—Normal defeats B. C., 13-0. Had a party for visiting team and of course it was enjoyed by all—except B. C.
- OCTOBER 17—Mary and C. G. are hitting it off in high. Ain't love grand!
- OCTOBER 22—Rufus Martin had his trousers burned, but his coat tail covered the loss.
- OCTOBER 28—Miss Bruce and Miss Coleman laid bricks all night on the school exhibits for the Fair.
- OCTOBER 30—We craved a break in the monotonous routine so Amy supplied it by getting married.
- NOVEMBER 2—G. N. S. crowd go to Fair. Rained all night. What a nice time we all had!
- NOVEMBER 6—Again Dorothy, Willie Belle, Thelma and Leola sing "Ol' Car'lina" and the Glee Club "Honey Town." Wanted—New songs.
- NOVEMBER 16—Breakfast without a cereal. Oyster stew for supper.
- NOVEMBER 19—Normal wins from Fort Screven, 14-0. How important we all felt. "The Feast of the Red Corn" gave the Glee Club an opportunity to show off.
- NOVEMBER 20—Went to the show in Delmas' truck. Had to walk back. Wonder why?
- NOVEMBER 22—Miss Bruce and Dorothy bet on the weather. Dorothy wins, but the rain does the settling.
- NOVEMBER 25—Thanksgiving. Oh! the thrill of a holiday.
- DECEMBER 6—Midnight feast, but Dorothy fails to wake up.
- DECEMBER 16—Stephens and Oglethorpes have a Christmas tree.
- JANUARY 5—Jeannette appears with bobbed hair.
- JANUARY 14—Blackie, the cat, fell into the grease lye pit. "Where, oh where, has Blackie's fur gone."
- FEBRUARY 10—Big doin's. Carolyn gets a stack of notes from Seaborn.
- FEBRUARY 12—Mr. Anderson pulls off his glasses only fifteen times during his chapel talk. His suspenders did not break.
- FEBRUARY 22—Manless Jazz Wedding. People fail to get money's worth. Little Lord Fauntleroy's (Miss Tubb) "britches" fail to split.
- FEBRUARY 23—Dorothy gives another one of her famous dinners. Guests suffered no ill effects.
- FEBRUARY 27—Dates lasted two hours and forty minutes. Wonder why?
- MARCH 3—Miss Trussell gets hard-boiled and works us awfully hard.
- MARCH 4—Reflector Staff goes to Savannah for ads.
- MARCH 8—Mr. Wells returns from Dallas. The shubbery doesn't die while he is away.
- MARCH 19—Estelle stills thinks she's cute.
- MARCH 21—Mrs. Bell's table has a wiener roast. Fatty comes back barking. Hot Dog!
- APRIL 1—"April Fool." The Reflector goes to press. "Who's sorry now?"





Superlatives

<i>Neatest</i>	EUNICE WILSON
<i>Cutest</i>	MOSES MCNIRE
<i>Best All-Round Boy</i>	EARLIE LOVE
<i>Best All-Round Girl</i>	SARA HALL
<i>Best Natured</i>	SARA HALL
<i>Quietest</i>	LOLALE FOUNTAIN
<i>Jolliest</i>	SARA HALL
<i>Best Athlete—Boy</i>	FRANCIS MATHIS
<i>Best Athlete—Girl</i>	TRUE WATSON
<i>Most Handsome Boy</i>	MONROE WARREN
<i>Most Attractive</i>	THELMA JOHNSON
<i>Best Student</i>	LOLALE FOUNTAIN
<i>Most Popular</i>	THELMA JOHNSON
<i>Most Beautiful</i>	DOROTHY ANDERSON

* * * * *

Miss Trussell: "Why does the moon appear to be larger when rising?"

Montgomery (sleepily): "It must be stretching."

* * * * *

Mr. Barron: "What can you tell me about nitrates?"

Luneil Bell: "Well-er they're a lot cheaper than day rates."

* * * * *

Miss Stubbs (in French class): "George, please tell me what it is, when I say: 'I love, you love, he loves.'"

George: "That's one of them triangles when somebody gets shot."

* * * * *

Mrs. Singley (at ball game): "Why do they call that a fowl? I don't see any feathers."

Mr. Singley: "It's a picked nine."

* * * * *

Two bright answers received in Sophomore English class:

Bacon wrote, "Bring home the Bacon."

Wordsworth wrote, "Imitations of Immorality."

* * * * *

Eunice Wilson: "Miss Coleman, I have only two sheets of paper for this test."

Miss Coleman: "Don't worry. You can put all you know on one sheet."

* * * * *

Jeannette Grace: "Miss Bruce, what kind of batter is 'poor batter?'"

* * * * *

Mrs. Bell: "Dorothy, why don't you come in out of the rain?"

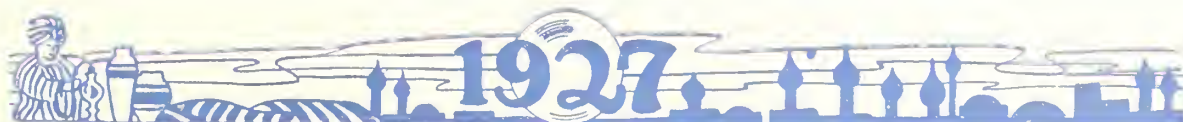
Dorothy: "Oh, Mrs. Bell, I'm trying to shrink."

* * * * *

Elton Wilson to Nina Belle Banks: "What kind of an animal is a cameo?"

* * * * *

Eunice Wilson (studying for Bible exam): "Girls, who was the little boy born in a crib?"





Miss Tubb (recommending a short story to be read): "Students, be sure and read this 'As a Dog Should.'"

* * * * *

In explaining how to make a rabbit trap Moses McNure had only four boards instead of five boards in his outline which he had put on the board. D. F. Warnock wanted to know if he wanted to make the trap and found he had only four boards what he would do. Moses replied: "Well, I suppose I'd have to crank up and go get another."

* * * * *

During the diphtheria scare, Arrie Lou was heard to exclaim: "Oh, Miss Tubb, are we going to be guaranteed?"

* * * * *

Mr. Phagan: "Do you believe a rabbit foot ever brought good luck?"

Mr. Wells: "You bet! My wife felt one in my pocket once and thought it was a mouse."

* * * * *

Gladys DuBose: "What did you make on your history exam?"

Ralph Dixon: "Zero."

Gladys: "Oh! I see, you're one of those fellows that stop at nothing."

* * * * *

LOST—One letter written to C. G. Rountree. Liberal reward offered. See Mary Brinson.

* * * * *

WANTED—A man five feet, eleven inches, weighing 146 pounds, answering to the name "Snag." Any one answering to this description please see Lunel Bell.

* * * * *

Waldo Pafford says: "To write a love letter use a soft pencil, to write a stiff exam use a hard pencil."

* * * * *

Bill Coleman tore his suit recently. It surely was a clothes call.

* * * * *

SOME DON'TS

Don't wish to be a fish, for then you would have to live in schools all your life.

Don't be so fashionable that you have to get spring fever in October.

Don't be surprised at the peculiar odor around the postoffice; it is probably the dead letters.

Don't use a tooth pick in public until you are rich enough to get by with it.

Don't fail to raise your hat in greeting a lady. If you haven't on one, just raise your eyebrows.

* * * * *

Myrene says the way to a man's heart is through his stomach, but who wants to go through his stomach?

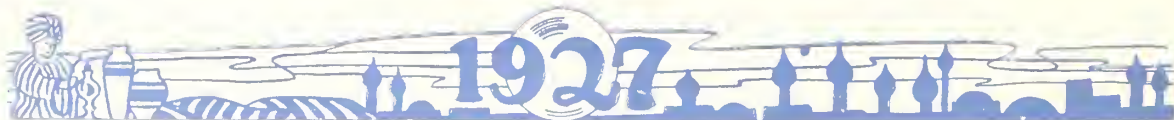
* * * * *

Bothwell: "How do you like your English course?"

Joe: "It's all write."

* * * * *

Charlie Buie gave his teacher this illustrative definition of "responsibility:" "Boys have two buttons on their suspenders so's to keep their pants up. When one button comes off there's a good deal of responsibility on the other button."



P
U
R
E

D
R
U
G
S



P
R
I
C
E
S

R
I
G
H
T

Phone
414

Hollingsworth's
UNUSUAL CANDIES

Phone
414

Quality and Service

May the Normal Sons and Daughters
Make Holland's Store Headquarters

TRY OUR CANDIES, SANDWICHES AND DRINKS

They Will Help You Clearly Think

HOLLAND DRUG CO.

"Where the Crowds Go"

STATESBORO,

::

GEORGIA

AMUSU THEATER

The Home of
HIGH CLASS PHOTOPPLAYS

A Place for the Live Ones

Change of Programs
TUESDAY, THURSDAY,
and SATURDAY

P. G. Walker, *Manager*

E. C. Oliver Co.

LADIES' AND GENTS'
READY-TO-WEAR

Store of Quality

Statesboro, : Georgia

Cecil W. Brannen

HARDWARE
GROCERIES

Telephone 239

28-30 West Main Street

THE REXALL STORE

Everything in Drugs

LIGGETT'S and NUNNALLY'S
PRODUCTS

KODAKS

CIGARS, TOBACCO

STATIONERY, MAGAZINES

FRANKLIN DRUG
COMPANY

"A Good Drug Store"

Phone 2

Raines Hardware Co.

THE STORE OF SERVICE
AND QUALITY

Phone 6 Statesboro, Ga.

*We Patronize Those
Who Patronize Us*

Crescent Stores

19-21 W. Main St., Statesboro

Dr. Oscar Johnson

DENTIST

Statesboro. : Georgia

STATESBORO

BUGGY AND

WAGON CO.

HARDWARE AND

FARM IMPLEMENTS

HORSES AND MULES

WIRE FENCING

Phone 227

Howell Cone

ATTORNEY AT LAW

Statesboro. : Georgia

Dr. D. R. Dekle

OPTOMETRIST

Bank of Statesboro Building

Statesboro. : Georgia

Dr. E. N. Brown

DENTIST

Oliver Building

Hinton Booth

ATTORNEY AT LAW

4 Courtland Street

Statesboro. : Georgia

L. A. Akins

SEE ME WHEN

YOU WANT

INSURANCE

Congratulations

to the

Graduating Class of 1926-1927

BEST WISHES FOR THE

CONTINUED SUCCESS OF

The Georgia Normal College

J A K E F I N E

INCORPORATED

(Successors to R. Simmons Co., Inc.)

"THE STORE WITH A MILLION FRIENDS"

STATESBORO,

"Where Nature Smiles"

GEORGIA

Fruitland Nurseries

Successors to P. J. Beckmans Co.

Augusta, Ga.

THE SOUTH'S OLDEST
NURSERY

Visitors Always Welcome

Statesboro Insurance Agency

Established 1888

Phone 79

Statesboro,

Georgia

BRAID & HUTTON

Incorporated

PRINTERS,

STATIONERS

and

LITHOGRAPHERS

10-18 Whitaker Street

Savannah,

:

Georgia

COMPLIMENTS

UNDERWOOD TYPEWRITER COMPANY

C. R. BLADE, *Resident Manager*

22 West State Street

Savannah,

Georgia

AVERITT

BROTHERS AUTO CO.



SALES
SERVICE

Phone 103

Statesboro,

:

Georgia

J. E. Parrish & Co.

Dealers in
GENERAL MERCHANDISE

Portal, Georgia

Jepco Filling Station

AUTO ACCESSORIES
TIRES AND TUBES

Portal, : Georgia

"THE VANITY BOX"
Exclusive Ladies' Shoppe

44 East Main Street
The Home of Pretty Frocks
Statesboro, Georgia

The only tire in the United States that carries a 12-month guarantee regardless of mileage, defects, or accidents, is sold by

Johnson Hardware Company
Statesboro, : Georgia

Dr. J. C. Lane

xx
DENTIST
xx

Oliver Building

Smith Fertilizer Co.

Manufacturers of
HIGH GRADE FERTILIZERS

Statesboro, : Georgia

Donaldson - Smith Clothing Co.

Outfitters for
Men and Boys
7 S. Main Street
Statesboro, Georgia

Hemstitching and Picoting
Royal Society Goods

Always Ready to
Serve You
Mrs. W. W. DeLoach
First National Bank Building

"SUNLIGHT" FLOUR

"KRAFT'S" CHEESE

"Q" MACARONI

Distributed by

ALFRED DORMAN

Wholesale

FRUITS PRODUCE
PROVISIONS

If you want the best, and will be satisfied with nothing less, call your grocer, and ask for the World's three best products.

For cakes and rolls:

Birdsey Best Plain Flour

For iced tea—that's better

Banquet Orange Pekoe

For sandwiches and salads:

Gelfand's Mayonnaise, Relish

and Thousand Island Dressing

STATESBORO GROCERY CO.

Wholesale Distributors

W. E. DEKLE CO.

Staple and Fancy Groceries

Fresh and Cured Meats

Fish and Oysters in Season

"Where Quality Prevails"

Phone 424

Bulloch Drug Co.

"A Complete Drug Store"

Agency

Whitman's Candy

Prescriptions a Specialty

90—Phone—90

Statesboro, : Georgia

M. Rawdon Olliff Ernest E. Brannen

**OLLIFF FUNERAL
HOME**

AMBULANCE

LADY ASSISTANT

Statesboro, : Georgia

Every lady is our friend,
And declares we're "on the mend,"
When it comes to ladies' shoes,
Best materials we choose,
To work with honest will,
And good shoe-repairing skill,
Neither do we patrons rob,
By high charging for a job,
But leave it every time complete,
Satisfactory and neat.

J. Miller Shoe Factory

Statesboro, Georgia

HERFF-JONES COMPANY

MANUFACTURING

Jewelers and Stationers

Indianapolis, Indiana

Official Jeweler for

GEORGIA NORMAL SCHOOL

H. S. CANFIELD,

::

Georgia Representative

"Bob-Rite" Barber Shop

The Shop of Personal Service

Your trade will be appreciated.

Give us a chance and watch us grow.

*Ladies' and Children's
Hair Cutting*

That's Us.

D. P. WATERS, Prop.

Good Things to Eat

Since 1893

SCHOOL BOOKS AND
SCHOOL SUPPLIES
BIBLES

Seeds for the Garden and Fields

FEED OF ALL KINDS

Olliff and Smith

Confidence ---

We feel that our past record and steady growth are evidence that we are worthy of your confidence. The policies of this bank are founded on honest, upright principles. Strict adherence to honest, sound methods has done much toward the growth of this institution.

**The First National
Bank**

Statesboro,

:

Georgia

1. *The Acme Teachers' Agency* is constantly placing teachers.
2. Our clients' interests are our interests.
3. We get results.
4. A satisfied client is our greatest pride.

A. C. WHITEHEAD

Healey Building

Atlanta, : Georgia

WHITE BREAD AND ROLLS

We Supply Are Purest, Most
Wholesome and Best You
Can Buy

Blue Ribbon Bread

Rich—Pure—Delicious

Made by

City Bakery

J. M. ANDERSON, Prop.

Kennedy's Filling Station

AUTO ACCESSORIES

Tires, Tubes, Gas, Oil, Free Air

Phone 351

North Main Street

B. V. COLLINS

ANYTHING TO

WEAR

—for—

MEN, WOMEN and CHILDREN



S. W. LEWIS

FORD

PRODUCTS

Statesboro, : Georgia



KINGAN & Co.

PORK AND BEEF PACKERS

Producers of the Celebrated "Reliable" Brand
Hams - Bacon - Lard

33-35 W. Alabama St. ATLANTA, GA. Walnut 3776 - 3778

BLUE

Suits That Will Close Your COLLEGE DAYS
and Be Appropriate for Business Wear

By KUPPENHEIMER

THOMAS A. JONES COMPANY
SAVANNAH, GA.

BAXTER'S BARBER SHOP

*Where the
Promise is
Performed*

*Ladies and
Children a
Specialty*

I Sell Meats and Ice

*If You Want Lowest Prices and
Honest Weight See Me*

Paul Suddath

Portal, Ga.

Phone No. 2410

BLITCH-PARRISH COMPANY

SELLS

THE BEST OF

EVERYTHING

TO WEAR



Statesboro -:- Georgia

Enjoy Thirst

5c gives you the beverage that delights
taste and truly quenches thirst.

Pure and Wholesome

DRINK

Coca-Cola

IN BOTTLES

*Prepared with the finished art that comes from
a lifetime of practice*

Sam A. Northcutt

Wm. P. Northcutt

Northcutt Bros.

Master

DRY CLEANERS AND DYERS

41 East Main Street

The Boys That Appreciate Your Business

Phone 18

STATESBORO, GA.

EAST SIDE EGGERY

NORTHCUTT BROS., Props.

Baby Chicks

Hatching Eggs

Custom Hatching

The chicks you get from us are hatched right. Bred to grow and lay. We use only large Buckeye Mammoth Incubators. We have hundreds of satisfied customers. We take off over 1000 chicks every Tuesday. You are invited to come to our hatchery whether you buy or not. Get your orders in early.

GORDON STREET, Near Cemetery

A. C. Oelschig & Sons

"Say it with Flowers"

NURSERY

Bull St. at Oglethorpe Ave.

Phone 496 SAVANNAH, GA

Savannah Mattress Company

Manufacturers and Renova-
tors of Felt and Cotton
Pillows, Mattresses,
Etc.

318-320 East Bay Street

Phone 3296

DAVID SIMMONS & SONS, Props

Residence: 521 Nicoll St.

Phone 3235-J

Savannah : Georgia

Compliments of

FRANK & CO.

SAVANNAH, GA.

PSYCHOLOGY teaches us that the habits we form during our High School and College years are the ones that usually stay with us.

To cultivate the habit of thrift and intelligent living in these periods of life means success and comfort in later years.

Cultivate the habit and spirit of thrift today.

SEA ISLAND BANK

"The Bank of Personal Service"

Courteous - Prompt
Efficient

The
**FLANDERS
PRINTING
COMPANY**
of Statesboro, Ga.

Better Printing at
Moderate Prices

Maxey E. Grimes

Optometrist-Optician

Optical Office Hours:

9 to 12 A. M.

2 to 5 P. M.

I have also the largest jewelry
store in this section.

Diamonds, Watches, Jewelry
and Kindred Lines

Gold Jewelry Made to Order

Highest Grade Watch and
Jewelry Repairing

18 Main St., East
Statesboro, Ga.

Stevens Supply Co.

White Pine
Sash Doors Blinds
Paints Roofing Hardware
All Kinds of
Building Material
745 Wheaton Street
Savannah, Ga.

Compliments of

H. B. Strange

Judge of Superior Court

BULLOCH TIMES

The Home Newspaper

A Friend of the
Georgia Normal

Compliments

of

A SAVANNAH FRIEND

A College for Teachers

The Georgia Normal School at Statesboro is a first class college in your own section of the State because:

1. Its buildings, equipment and library are approved and valued at \$350,000.00.
2. Its faculty is composed of college teachers of long experience who hold graduate degrees.
3. Its course of study compares favorably with the other three normal colleges in the state. Get our catalogue and compare them.
4. The State of Georgia provides us a maintenance fund of \$40,000.00 annually. This fund provides the money to satisfactorily operate a college.

The above four statements cover the things necessary to make a college. Write for a catalogue. You can enter now.

Georgia Normal School

A State College for Teachers

Statesboro, Georgia



THE CHAMBER OF COMMERCE

STATESBORO, GEORGIA

These Two Civic Clubs Are Enthusiastic
Promoters of the Development
Program of the Georgia
Normal School

They Stand Ready to Lead or Assist in
the Development of Other Worthy
Community Enterprises

THE WOMAN'S CLUB

STATESBORO, GEORGIA

NuGrape
REG. U. S. PAT. OFF.
IMITATION GRAPE - NOT GRAPE JUICE
A FLAVOR YOU CANT FORGET

**DEMAND IT
IN THIS BOTTLE**

*To Avoid SUBSTITUTION and
DISAPPOINTMENT*

Every Bottle Sterilized and Thor-
oughly Inspected Before
Leaving Our Plant.

We are Bottlers of High Grade
Sodas and Ginger Ale.

"Quality and Service"
OUR MOTTO

Phone 487

**Nu-Grape
Bottling Company**
Statesboro, Georgia



R. BRUBACKER, Manager

WA Inut 6623

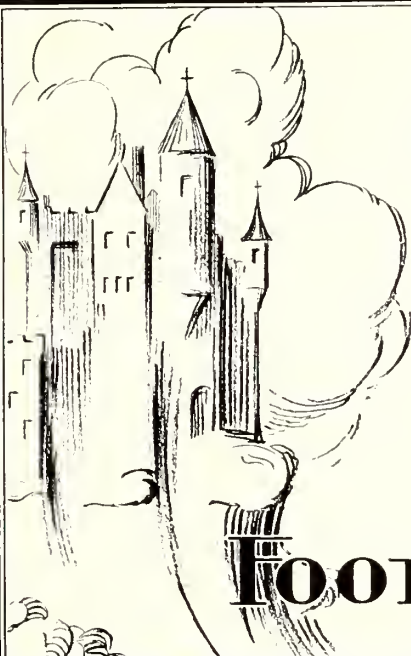
BRUBACKERS

*College Annual
Photographers*

Atlanta, Georgia

THE LARGEST PRODUCERS OF COLLEGE
ANNUAL PHOTOGRAPHS IN
THE SOUTH

Contracts solicited in all Southern States

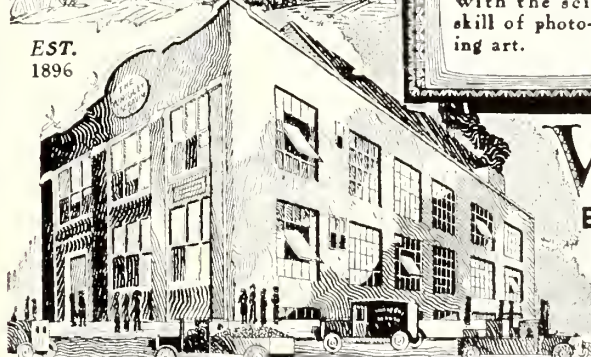


Visualization!

Mechanical difficulties have been met and overcome, imbuing our artisans with a sound knowledge of the groundwork of our business---a knowledge which leaves their minds and hands unhampered, free to effect the broader vision conceived by you for your Annual.

FOOTE & DAVIES Co.

ATLANTA



Memories

EST. 1896

Successful memoirs combine the enthusiasm of hard working editors and staffs with the scientific skill of photo-engraving art.

Offering such skilled service, the Wrigley specialists give to Annual Staffs assurance of success—we work closely with you and your printer.

WRIGLEY

ENGRAVING CO.

*Artists -
Photo-Engravers
Electrotypers*

OFFICE STUDIO AND PLANT • 78-80 W. CAIN ST. • ATLANTA, GEORGIA •

BASEBALL
FOOTBALL
BASKET-BALL
VOLLEY BALL

*We can furnish every article needed
for these great sports.*

—We Handle—

Goldsmith, A. J. Reach, Wright
& Ditson Complete Line

*We also carry Tennis Equipment,
Guns and Ammunition, Hunting Cloth-
ing, Johnson Motors, Boats and Canoes,
Bows and Arrows, Camp Equipment,
Fishing Tackle.*

SPECIAL DISCOUNT TO COLLEGES,
SCHOOLS AND CLUBS ON ALL
SPORTING GOODS

Stubbs Hardware Co.,
119 Congress St., W., Savannah, Ga.

Southern Teachers' Agency

FOUR OFFICES
CONTINUOUS ENROLLMENT
—NO ADVANCE FEES—

Our business is to place the right
teacher in the right position at the
right time. We cover South, Middle
Atlantic and Middle-west States.

Columbia, S. C. Richmond, Va.
Chattanooga, Tenn. Louisville, Ky.

PATRONIZE

OUR

ADVERTISERS

COMPLIMENTS OF

Victor Brothers

THE "VEBE" HAT

Savannah, Georgia

PATRONIZE

GEORGIA

NORMAL

—and—

BUY BUILDING MATERIAL

—FROM—

**F. W. DARBY
LUMBER CO.**

KILN DRIED LUMBER
A SPECIALTY

—Phone 54—

Statesboro, : Georgia

SUNBEAM
*Pure Food Products the World's
Best*

USED BY DISCRIMINATING
PEOPLE EVERYWHERE

Austin, Nichols & Co.,
INCORPORATED
New York

RESERVE
LH
1
.G43
R4
1927

ZACH S. HENDERSON LIBRARY



0 2001 0407678 7

FOR REFERENCE

NOT TO BE TAKEN FROM THIS ROOM

DEMCO

