

Georgia Southern University

Digital Commons@Georgia Southern

The George-Anne Newsletters

Student Media

1-19-2018

The George-Anne Daily

Student Media, Georgia Southern University

Follow this and additional works at: <https://digitalcommons.georgiasouthern.edu/george-anne-newsletter>

Recommended Citation

Student Media, Georgia Southern University, "The George-Anne Daily" (2018). *The George-Anne Newsletters*. 2.

<https://digitalcommons.georgiasouthern.edu/george-anne-newsletter/2>

This newsletter is brought to you for free and open access by the Student Media at Digital Commons@Georgia Southern. It has been accepted for inclusion in The George-Anne Newsletters by an authorized administrator of Digital Commons@Georgia Southern. For more information, please contact digitalcommons@georgiasouthern.edu.

THE GEORGE-ANNE DAILY

Top Stories From January 19, 2018



Q&A with Georgia State student newspaper, The Signal

To preview the game between GS and GSU, we reached out to The Signal's Sports Editor, Jerell Rushin, to get the inside scoop on the Panthers. [Full Story.](#)



Center for Wildlife Education set to open new exhibit

The Center for Wildlife Education is celebrating their 20th anniversary and is set to open their invasive species exhibit next month. The center will be having an anniversary event on Feb. 3. [Full story.](#)



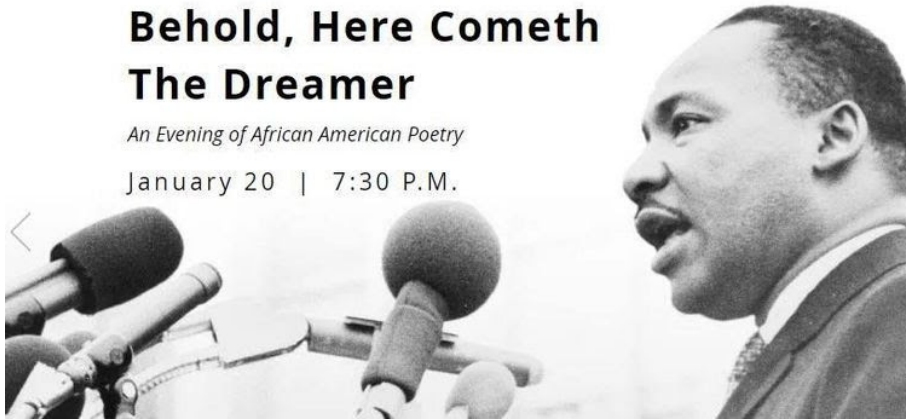
Planetarium to host a parallel show at the end of January

The show takes viewers to a parallel Earth called Earth 2, where the planet is full of hovering trees, bubble-like volcanoes and surreal sculptures. [Full Story.](#)

Behold, Here Cometh The Dreamer

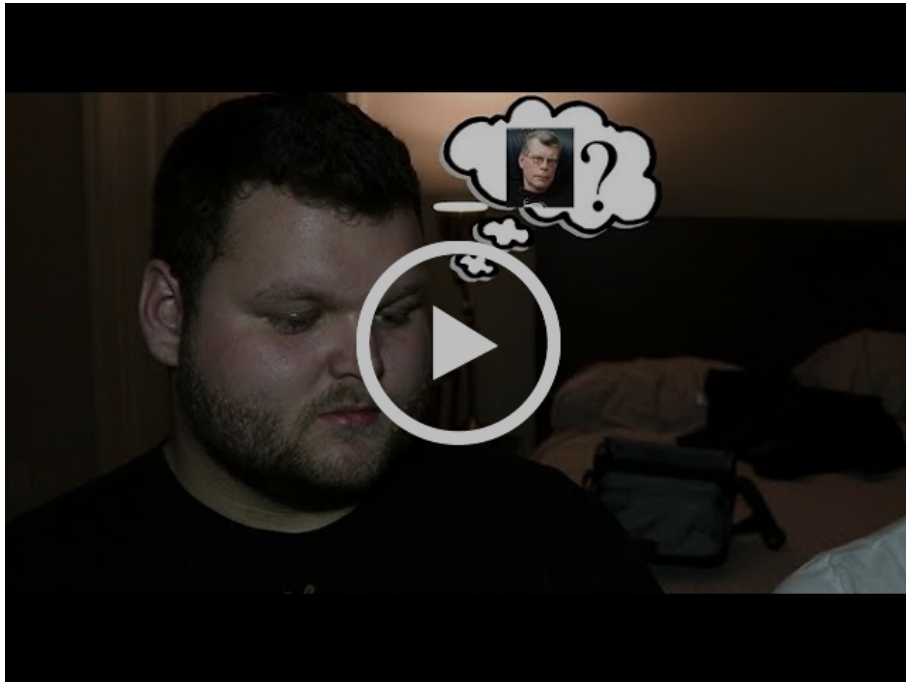
An Evening of African American Poetry

January 20 | 7:30 P.M.



Henderson Library to host African-American poetry night

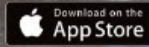
The event will take place at the Averitt Center Whitaker Black Box Theater on Saturday, Jan. 20. The event, which begins at 7:30 p.m., is part of the Averitt Center's African Heritage Series. [Full story.](#)



The Inner Circle: The Post
Brought to you by The Circle

Boro Beat

Your Georgia Southern toolkit
for all things news, nightlife, and
Eagle Nation.



Copyright © 2018 The George-Anne Daily | Georgia Southern Student Media, All rights reserved.
You are receiving this email because you have opted in during an event or through a form on our website.

Our mailing address is:

The George-Anne Daily | Georgia Southern Student Media
1332 Southern Drive
PO Box 8001
Statesboro, GA 30458

Add us to your address book

Want to change how you receive these emails?
You can update your preferences or unsubscribe from this list.

The MailChimp logo is displayed in a white, cursive font within a dark gray rounded rectangular button.

MailChimp