

# Reflector

1926

Georgia Southern University

Follow this and additional works at: <https://digitalcommons.georgiasouthern.edu/reflector-yearbook>



Part of the [Higher Education Commons](#)

---

## Recommended Citation

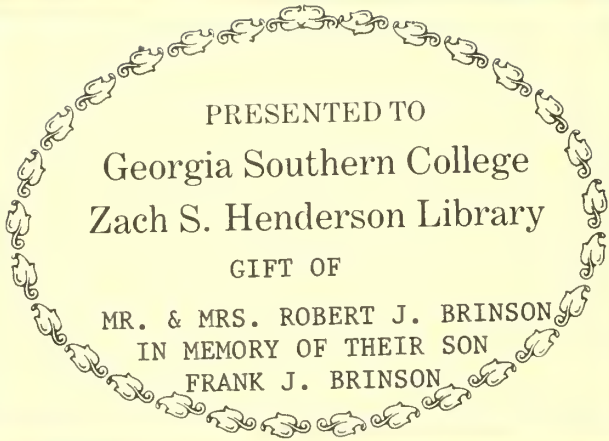
Georgia Southern University, "Reflector" (1926). *Reflector Yearbook*. 1.  
<https://digitalcommons.georgiasouthern.edu/reflector-yearbook/1>

This book is brought to you for free and open access by the Student Media at Digital Commons@Georgia Southern. It has been accepted for inclusion in Reflector Yearbook by an authorized administrator of Digital Commons@Georgia Southern. For more information, please contact [digitalcommons@georgiasouthern.edu](mailto:digitalcommons@georgiasouthern.edu).

# *Reflector*



1926



PRESENTED TO  
Georgia Southern College  
Zach S. Henderson Library

GIFT OF  
MR. & MRS. ROBERT J. BRINSON  
IN MEMORY OF THEIR SON  
FRANK J. BRINSON



German to Egypt Pyramid  
High School

Long

George Hornum  
High School  
Pres. Vert



The Reflector

# THE REFLECTOR

VOLUME I

PUBLISHED BY  
THE STUDENTS  
OF  
GEORGIA NORMAL SCHOOL  
STATESBORO, GEORGIA

## Foreword

*The Staff of 1926 in sending out this, the first volume of The Reflector, has attempted to make it worthy of the confidence placed in us by the student-body. It has been our aim to reflect the joys, the hopes, the duties, the pleasures, and the ideals of our college life.*

## Contents

BOOK I  
The College

BOOK II  
The Faculty

BOOK III  
Classes

BOOK IV  
Organizations





## Dedication

To our President

Ernest Victor Hollis

in recognition of his sympathy and foresight  
which inspires youth to greater and nobler  
deeds, and his untiring efforts which have  
given to us unlimited opportunities in edu-  
cation, we affectionately dedicate this, the  
first volume of

The Reflector



### A Word of Greeting

We are glad you have made your way into the College World. We wish you well and we do not expect you to disappoint us. You have everything in your favor, a good location, none better in the state, a vigorous management, a hearty good-will from your student-body, and a President trained to meet your needs. We feel that you have everything you can wish for except money; you will get the money.

Stand firm and never give up.

David C. Barron



## Dedication

To our President

Ernest Victor Hollis

in recognition of his sympathy and foresight  
which inspires youth to greater and nobler  
deeds, and his untiring efforts which have  
given to us unlimited opportunities in edu-  
cation, we affectionately dedicate this, the  
first volume of

The Reflector



### A Word of Greeting

We are glad you have made your way into the College World. We wish you well and we do not expect you to disappoint us. You have everything in your favor, a good location, none better in the state, a vigorous management, a hearty good-will from your student-body, and a President trained to meet your needs. We feel that you have everything you can wish for except money; you will get the money.

Stand firm and never give up.

David C. Barrow



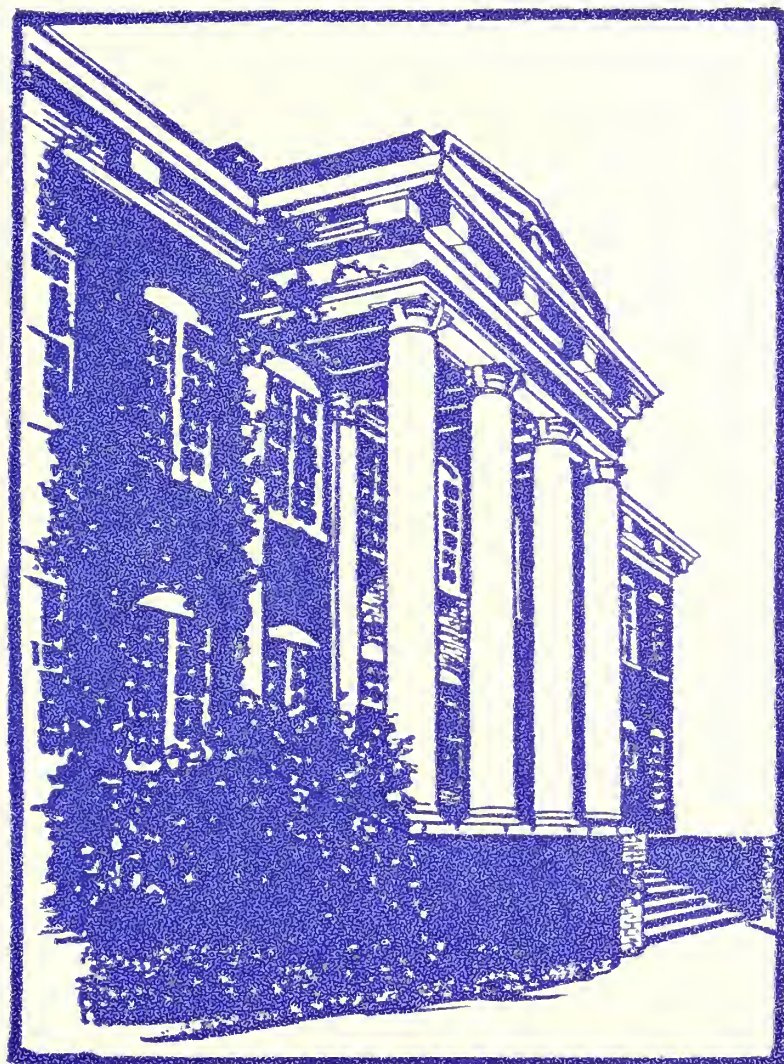
## The Reflector



### Reflector Staff

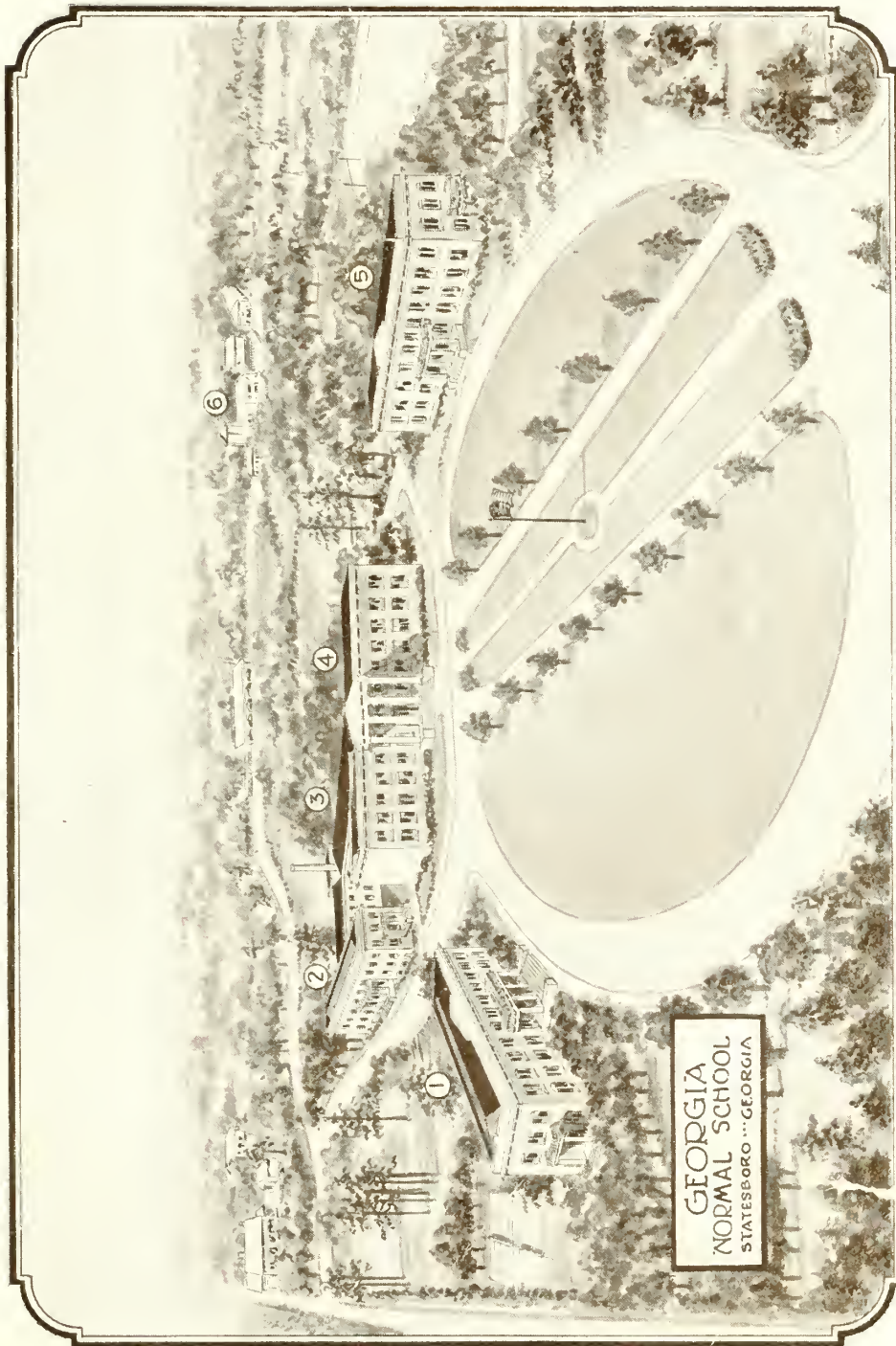
ANNIE NELLA SCREWS . . . . .	<i>Editor-in-Chief</i>
BERNICE LEE . . . . .	<i>Assistant Editor</i>
LUCY RAE RUSHING . . . . .	<i>Art Editor</i>
HARVEY CALHOUN . . . . .	<i>Business Manager</i>
THELMA JOHNSON . . . . .	<i>Assistant Business Manager</i>
MARY BRINSON . . . . .	<i>Literary Editor</i>
ASA WALL . . . . .	<i>Athletic Editor</i>
ANSEL FRANKLIN . . . . .	<i>Joke Editor</i>
ROBERT COURSEY . . . . .	<i>Subscription Manager</i>





The College  
Book I





1. East Dormitory. 2. Dining Hall. 3. Auditorium. 4. Administration Building. 5. West Dormitory. 6. Farm Buildings.





FRONT OF ADMINISTRATION BUILDING

*This building was erected in 1907 as part of the original plant. Citizens of Statesboro and Bulloch County provided the money for this building.*



#### EAST DORMITORY

*This is one of the original buildings. West Dormitory on the opposite side of the campus is identical in appearance and capacity with the above building. Funds were provided from local sources.*





ANDERSON DINING  
HALL

*This building was erected in 1912. It has lately been dedicated to Hon. J. Randolph Anderson, of Savannah, Ga., who was chairman of the Board of Trustees from the creation of the college until 1922.*



ENTRANCE TO  
DORMITORY

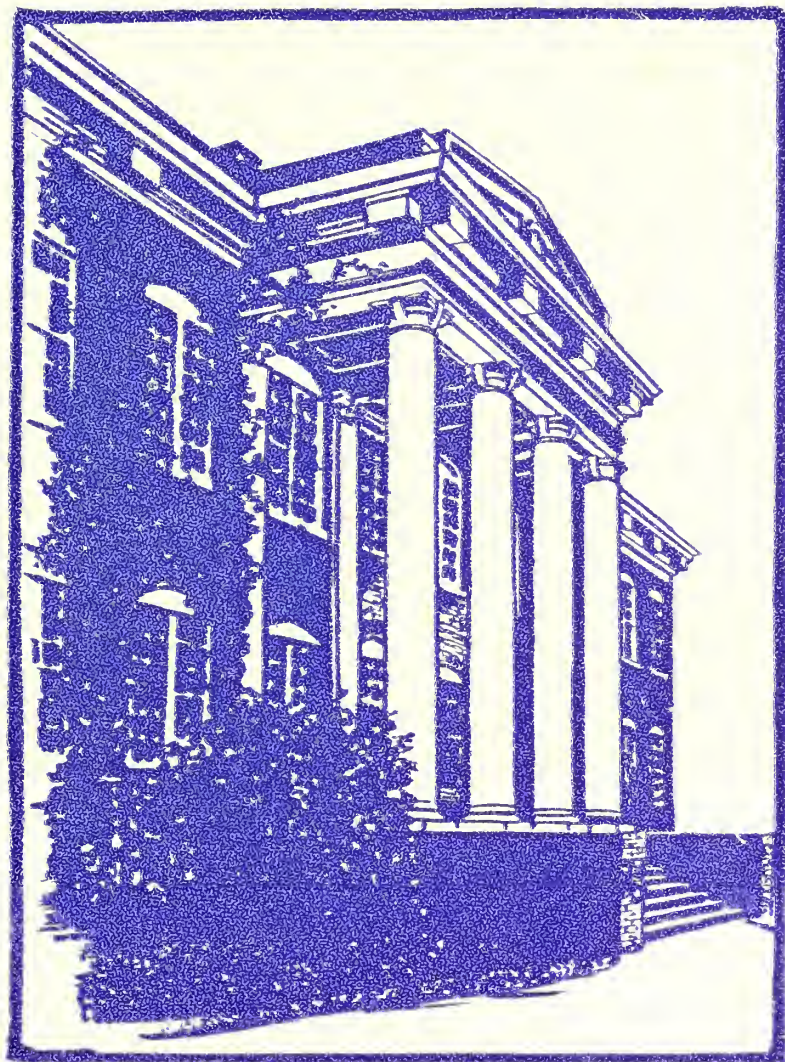
*This view shows a close-up of  
the small or end entrance to the  
dormitories.*



#### LIBRARY

*This picture gives a glimpse of the interior of the main library. It is one of the most used departments of the college.*





Faculty  
Book II





# THE REFLECTOR



ERNEST VICTOR HOLLIS, B. Sc., M. Sc., M. A. . . . . *President*

B. Sc., Mississippi A. & M. College; M. Sc., Mississippi A. & M. College; A. M. Columbia University of New York; work towards Ph. D. Degree at Columbia; rural school teacher; high school principal and teacher; instructor in Botany and Plant Pathology at Mississippi A. & M. College; assistant Pathologist Bureau of Plant Industry of the United States Department of Agriculture; principal State Agricultural School for the First District; President Georgia Normal School.

BURRUS MATTHEWS, A. B., M. A. . . . . *Dean*

A. B., M. A., Union University; graduate work one year at Tulane University; graduate work in "School Administration" at George Peabody College for Teachers; principal of high schools of West Tennessee for four years; instructor in English, Warren Easton Boys' High School, New Orleans; professor of Education and Psychology, Piedmont College; professor of Education and Psychology, Mississippi Woman's College; dean and head of Department of Psychology, Georgia Normal School.

# THE REFLECTOR



LAURA E. HAYNES, B.S., M.A. . . . . *Education*

B. S. Degree from George Peabody College, Nashville, Tenn.; M. A. Degree from Teachers' College, Columbia University, New York; Diploma from Alabama State College, Montevallo, Ala.; attended Chicago University 1922; Summer Courses at University of Alabama and University of Tennessee; work in teaching; assistant in high school in Alabama six years; head of English Department and lady principal State Normal School, Daphne, Ala., one summer; taught Psychology; assistant in high school, Englewood, N. J., one year; head of Department of Education at Teachers' College, Miss., 1924-'25.

DAVID NYE BARRON, B.S. A. . . . . *Agriculture*

B. Sc., Mississippi A. & M. College; Clarke Memorial College; Graduate work, Mississippi A. & M. and University of Georgia; George Peabody College for Teachers; Agriculturist, Simpson County Agricultural High School, Miss., 1915-16, 1916-17; U. S. Army, Camp Jackson, S. C., instructor in agriculture; State Agricultural School for First District; Agriculturist Georgia Normal School.

EVELYN H. COLEMAN . . . . . *Music*

One year at G. S. C. W.; graduate certificate course in music, Brenau Conservatory; special work in Atlanta Conservatory; head of Music Department, Bowdon, Georgia, High School, one year; head of Music Department, Mansfield, Ga., High School, two years; head of Music Department, Blackstone Military Academy, four years; taught Piano and Violin, Blackstone College for Girls, one year.

# THE REFLECTOR



JESSIE GARSIDE, B. A., M. A. . . . . *History*

A. B., Cornell College; M. A., University of Chicago; summer courses University of Chicago, 1921-22-23-24; teacher of history in high schools of Iowa; teacher of history high school at Oskaloosa, Iowa four years; head of the Social Science Department two years; teacher of European and American History, Southwest Missouri Teachers' College at Cape Girardeau, Missouri summer school, 1925.

EDITH JOHNSON, A. B., M. A. . . . . *Languages*

A. B., Wesleyan College, Macon, Ga.; M. A., Emory University, Atlanta, Ga., eight years' experience; head of Language Department, Memphis, Tenn., high school, 1922-1924; head of Language Department, Georgia Normal School.

HILDA TUBB, A. B., M. A. . . . . *English*

A. B. Degree from Tennessee College, Murfreesboro, Tenn.; M. A. Degree from George Peabody College, Nashville, Tenn.; taught English and French two years at Beckley High School, Beckley, W. Va., and two years at Morristown High School, Morristown, Tenn.; instructor in English, Hall Moody Junior College, Martin, Tenn., summer 1925.

# THE REFLECTOR



FLORRIE MATHIS . . . . . *Secretary-Registrar*

MALVINA TRUSSELL, B. S. . . . . *Science*

B. S. Degree from Georgia State College for Women; six years' teaching experience in Georgia schools, including five years as principal of Junior High Schools; assistant in Physics at G. S. C. W.; instructor, Georgia Normal School, summer 1925; head of Science Department, Georgia Normal School; graduate work at Cornell University.

MRS. JEWEL JORDAN MATTHEWS . . . . . *Industrial Arts*

Two years of art at Piedmont College; special student of Geneva Allbright in Drawing, Charcoal, and Water Color; special student, Glenny Mosley in China Painting; instructor in Basketry, Union University; instructor in China Painting and Basketry in Mississippi Woman's College.



# THE REFLECTOR



MRS. LULA E. BELL . . . . . *Dean of Women*

MRS. J. R. OLIVE . . . . . *Dean of Men*

ELIZABETH BRUCE, B.S., H.E. . . . . *Home Economics*

B. S., H. E., State College of Agriculture; University of Georgia; graduate work, University of Georgia and Columbia University; instructor State Agricultural School for First District; Georgia Normal School.



# THE REFLECTOR



MRS. JESSE O. JOHNSTON, A.B. . . . . *Expression*  
 Graduate of Brenau College Conservatory with A. B. Degree, 1919; elected to membership in Zeta Phi Eta, National Honorary Oratory Sorority; Expression teacher in Statesboro High School.

JOHN M. PHAGAN, B.S. . . . . *Director of Extension Department*  
 B. S., State Normal College, Florence, Ala.; superintendent of public schools of Mt. Pleasant, Tennessee; Hartsville, Ala.; Villa Rica, Ga.; Powder Springs, Ga., and Pulaski, Georgia.

MABEL BRUNSON . . . . . *Bookkeeper*

# THE REFLECTOR



FRANCES STUBBS, A. B. . . . . *Librarian*

Normal-English Diploma G. S. C. W.; A. B. Degree from G. S. C. W.; assistant in Library at G. S. C. W., four years; regular assignments in teaching English in High School Department, G. S. C. W., practice school; teacher at Bethesda Boys' Home, Savannah, Ga.

E. G. CROMARTIE . . . . . *Physical Director*

State College of Agriculture, University of Georgia; Physical Director and Coach, Agricultural School for the First District; Georgia Normal School.

VIOLA PERRY . . . . . *Mathematics*

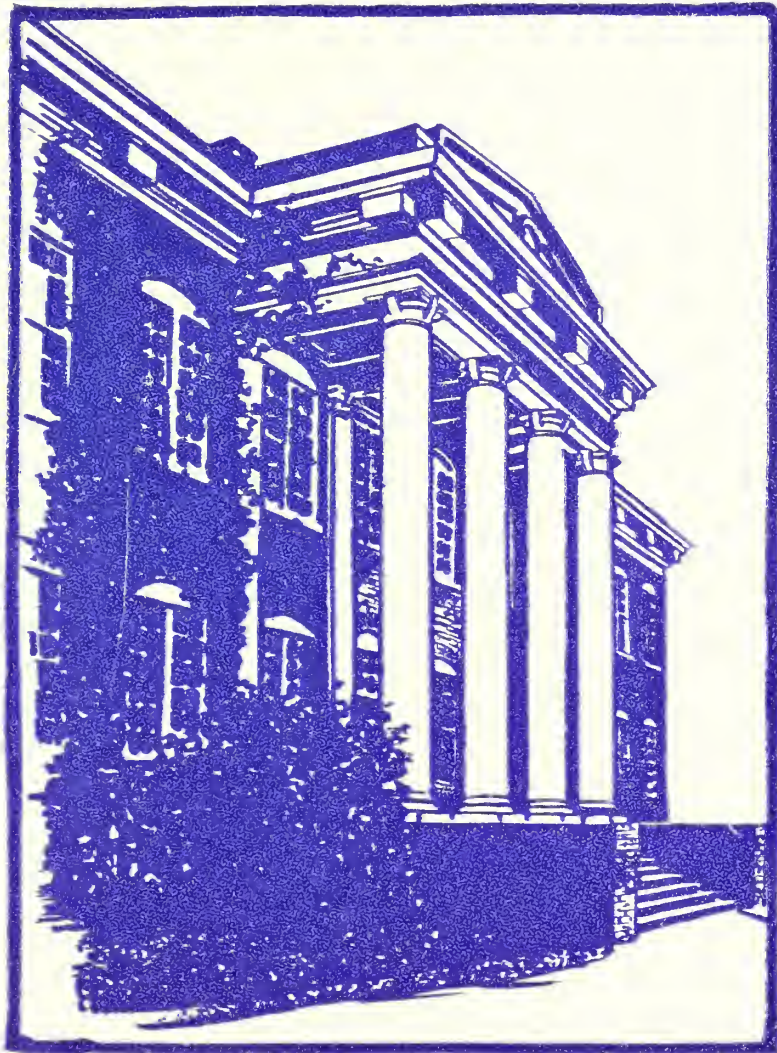
Normal School graduate; College credits from University of Georgia through correspondence and summer courses; graduate work in Mathematics; ten years' teaching experience; six years with Tifton A. & M. School.

# THE REFLECTOR



THE FACULTY AS THEY REALLY ARE





Classes  
Book III





# THE REFLECTOR



# THE REFLECTOR



MASCOT FRANCES BARRON

## Sophomore College Class

HARVEY CALHOUN . . . . . *President*  
 JANIE WARREN . . . . . *Secretary*  
 CLASS FLOWER: *Blue Hyacinth* CLASS COLORS: *Blue and Silver*  
 CLASS MOTTO: *"We Build the Ladder by Which We Climb"*

## Who's Who

<i>Prettiest</i> . . . . .	LUCILE DEKLE
<i>Most Studious</i> . . . . .	JANIE WARREN
<i>Most Popular</i> . . . . .	BLANCHE JOHNSON
<i>Best All Round</i> . . . . .	ANNIE NELLA SCREWS
<i>Most Attractive</i> . . . . .	BERNICE WILSON
<i>Best Athlete</i> . . . . .	LUCY RAE RUSHING
<i>Cutest</i> . . . . .	LUCY RAE RUSHING
<i>Jolliest</i> . . . . .	ANNIE NELLA SCREWS
<i>Best Man</i> . . . . .	HARVEY CALHOUN
<i>Neatest</i> . . . . .	CLYDE BARBER



HARVEY CALHOUN

Tarrytown, Ga.

*"Ichabod"*

*"Do right, fear no man;  
Don't write, fear no woman."*

Entered '26; President of Sophomore Class; Member of Stephens Literary Society, President, third term, '26; Education Club; Football Squad; Captain of Basket-ball Team; Attorney-at-Law to Kangaroo Court.

"A man among men?" No, a man among women. The only "gentleman" in our class, and you bet we're proud of him. "Ichabod" won his reputation on the athletic field.



# THE REFLECTOR



LUCILE DEKLE

Register, Ga.

*"Jill"*

*"Her very frowns are fairer far  
Than smiles of most maidens are."*

Entered '25; Member of Stephens Literary Society, Secretary, second term, '25, Pianist, third term, '25, and second term, '26; Local Editor of "The Torch," '26; President of Dramatic Club; Art Club; C. C. Club; Glee Club.

Lucile is pretty, smart and attractive. Her intangible personality has won many friends for her. Her brown eyes speak volumes that tongue never uttered.

# THE REFLECTOR



BLANCHE JOHNSON

Garfield, Georgia

*"Manche"*

*"Youth in pleasure should be spent,  
Age will come, we'll then repent."*

Entered '25; Member of Stephens Literary Society, '25. '26; Basket-ball, '25, '26; Captain of College Team, '26; President G. T. O. B. Club; Secretary and Treasurer of Education Club, '26; Glee Club; Secretary and Treasurer of Girls' Athletic Club; Member of Athletic Association; Y. W. C. A.

Blanche is a peppy sort of girl, a friend to all and good-natured. You simply can't get angry with her. As captain of the basket-ball team she has shown her athletic abilities.

# THE REFLECTOR



LUCY RAE RUSHING

Statesboro, Georgia

*"Luke"*

*"I'll be merry and free,  
I'll be sad for nobody."*

Entered '25; Secretary and Treasurer of Class, '25; Member of Stephens Literary Society, Chaplain, third term, '25, and Secretary, third term, '26; Basket-ball, '25 and '26; Secretary and Treasurer of G. T. O. B. Club; Treasurer of Class, '26; Glee Club; Education Club; Girls' Athletic Club; Athletic Association; Y. W. C. A.; Art Editor of "The Reflector"; B. C. Club.

"There's a little bit of bad in every good little girl." Quite so with "Luke"—but her "Naughtiness" adds a delicious note to her character. She is a typical modern girl—dependable, democratic and athletic.

# THE REFLECTOR



ANNIE NELLA SCREWS

Glennville, Georgia

*"Skruze"*

*"The girl worth while, is the girl who will smile,  
When everything goes dead wrong."*

Entered '25; Group Leader of Vesper, second term, '25; Member of Stephens Literary Society, Chaplain, second term, '25; President of Y. W. C. A., '25 and '26; Winner of Short Story Contest, '25; Editor-in-Chief of "The Reflector," '26; Glee Club; Education Club; Athletic Club.

Annie Nella is a girl of great intellectual powers and it is clearly seen by her work that she uses them. We have no fear for her as she goes out into life because we know that she will succeed in almost any line.



# THE REFLECTOR



JANIE WARREN

Pulaski, Georgia

*"Miss Janie"*

*"With the future now in view.*

*She'll take the path that leads her through to success."*

Entered '25; Vice-President of Class, '25; Associate Editor of "Station G. N. S.," '25; Secretary of Class, '26; Member of Stephens Literary Society, Vice-President, third term, '25, and second term, '26; Art Club; Y. W. C. A.; Vice-President Dramatic Club; Vice-President Education Club; C. C. Club; Editor-in-Chief of "The Torch," '26.

Possessed of sympathetic heart and noble ambitions. Janie has made quite an enviable record at Georgia Normal. Her scholarship is of the highest type and her friendliness has won a place in the hearts of each of us.

# THE REFLECTOR



BERNICE WILSON

Pulaski, Georgia

*"Jack"*

*"Without love and laughter,  
Life is nothing."*

Entered '25; Member of Stephens Literary Society, Program Committee; Winner of Loving Cup, '25; Member of Education Club; Whistler Art Club, Vice-President, '26; Dramatic Club; Glee Club; Business Manager of Class, '26; C. C. Club; Alumni Editor of Torch Staff.

Some one once said: "Beauty and brains will not mix." But all who know Bernice realize that theory and practice do not go hand in hand, for she is possessed of both. She is refined and reserved.

# THE REFLECTOR



CLYDELLE BARBER

Savannah, Georgia

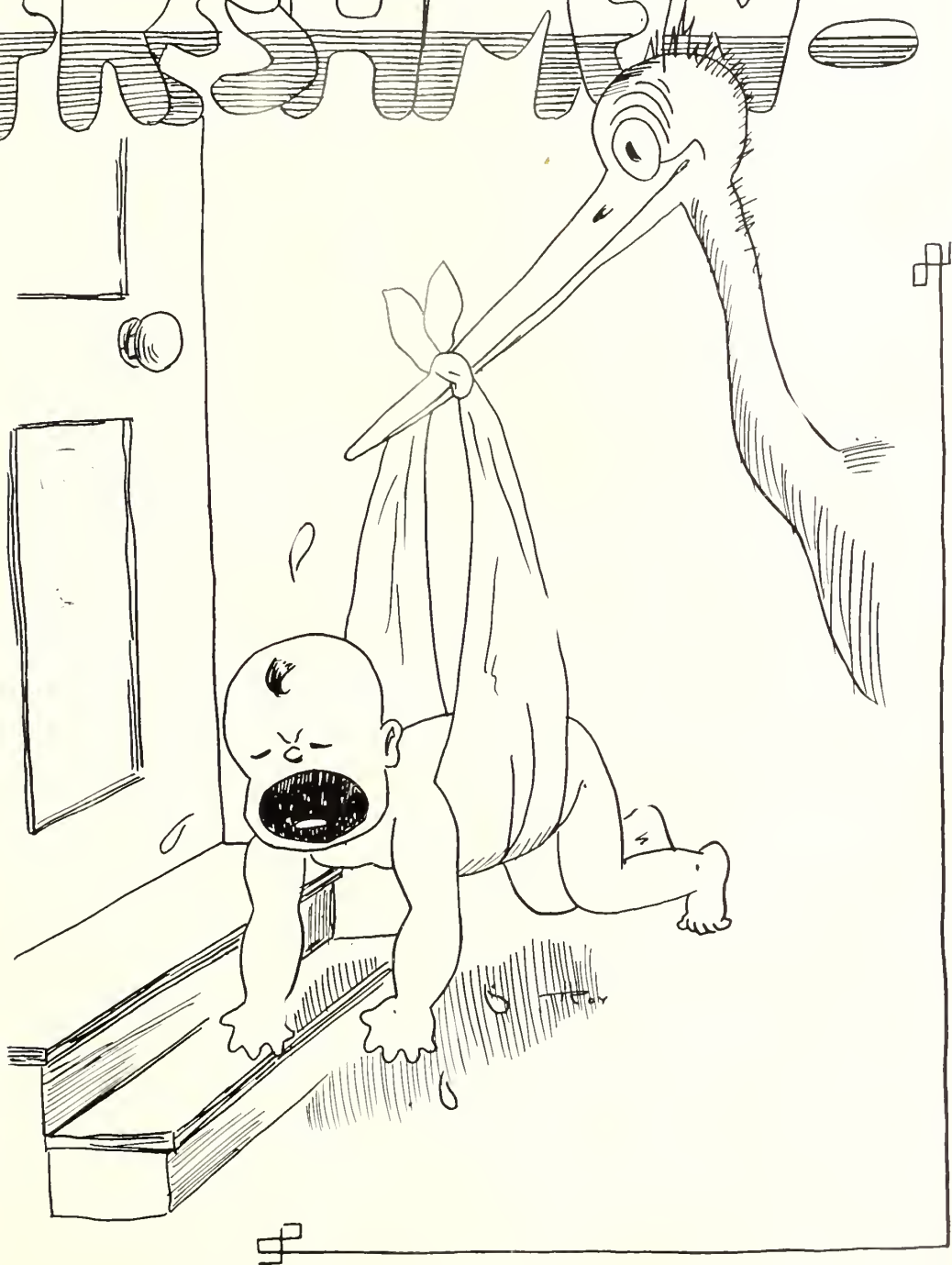
*"Kollie"*

Entered '23; Group Leader of Vesper Services, third term, '25, and first term, '26; Secretary of Stephens Literary Society, second term, '25, and first term, '26; Basket-ball Team, '25 and '26.

"Kollie" is just the kind of girl one is proud to have as a friend. She is never too busy to help any one in a task, never too tired to smile and speak a kind word, and never too self-centered to be considerate of others."

THE REFLECTOR

# FRESHMEN





# THE REFLECTOR



BERNICE LEE  
Leefield, Georgia  
*"Kiddish"*

Entered '24; President of Freshman Class; President of Bulloch County Club; Member Oglethorpe Literary Society, Secretary, first term, '26; Assistant Editor of "The Reflector"; McDowell Music Club, Vice-President, first term, '26; Education Club; Art Club; Y. W. C. A.

THELMA JOHNSON  
Garfield, Georgia  
*"Handsome"*

Entered '25; Secretary of Freshman Class; Basket-ball, '25, '26; Secretary and Treasurer Dramatic Club, '25, '26; Secretary and Treasurer of Art Club, '26; Member Stephens Literary Society; Y. W. C. A.; Glee Club; Music Club; Education Club; Athletic Club; G. T. O. B. Club.

# THE REFLECTOR



JUANITA COWART

Garfield, Georgia

*"Sober"*

Entered '26; Member of Stephens Society; Basket-ball of '26.

MARION DuBOSE

Ludowici, Georgia

*"Likable"*

Entered '26; Member of Stephens Society; Basket-ball, '26; Education Club; Athletic Club; Glee Club; Y. W. C. A.; Scrap-bag Editor of "Torch"; G. T. O. B. Club.

# THE REFLECTOR



BERTIE LANIER  
Statesboro, Georgia

*"Ready"*

Entered '26; Glee Club; Member of B. C. Club.

OLLIE MAE LANIER  
Brooklet, Georgia

*"Neat"*

Entered '26; Member of Stephens Society; Glee Club; Education Club;  
Dramatic Club; Y. W. C. A.; Member of B. C. Club.

# THE REFLECTOR



ARRIE LOU LEE

Dover, Georgia

*"Jolly"*

Entered '26; Member of Stephens Society; Basket-ball of '26; H. E. Club; Athletic Club; Art Club; Y. W. C. A.; Glee Club.

ADA LOU ROWE

Claxton, Georgia

*"Peaceful"*

Entered '26; Member of Oglethorpe Society; Art Club; Y. W. C. A.; Dramatic Club.



# THE REFLECTOR



SELMA RUSHING

Statesboro, Georgia

*"Blissful"*

Entered '26; Member of Stephens Society; Basket-ball, '26; Athletic Club; Glee Club; Member of B. C. Club.

DOROTHY THOMAS

Jacksonville, Florida

*"Musical"*

Entered '26; Member of Oglethorpe Society; Critic, second term, President, third term, '26; Treasurer Y. W. C. A.; President of Art Club; G. T. O. B. Club; Verse Editor of "Torch."

# THE REFLECTOR



# THE REFLECTOR



ASA PATRICK WALL

Pulaski, Georgia

*"Puny"*

*"To do well is to succeed"*

Entered '24; Football, Basket-ball, Baseball, Track, '23-'26; Member of Stephens Literary Society, President, first term, '25; President Senior Class; Captain Football Team, '24-'26; Group Leader Vesper Services, first term, '25; Glee Club; President of Y. M. C. A.; Sheriff of Kangaroo Court.

TRUE WATSON

Metter, Georgia

*"True"*

*"True to her word, her work, and her friends."*

Entered '25; Member of Oglethorpe Society, Secretary and Treasurer, 'second term, '26; Secretary and Treasurer Senior Class; President of Athletic Club; H. E. Club; Education Club; Y. W. C. A.; C. C. Club.

# THE REFLECTOR



MARY BRINSON

Millen, Georgia

*"Baby"*

*"Be a friend to all, but love only one."*

Entered '26; Member of Athletic Association; Athletic Club; G. T. O. B. Club; Y. W. C. A.; Glee Club; Annual Staff; Stephens Literary Society, Historian, second term; Historian of Senior Class; High School Basket-ball Team.

AUBREY ALDERMAN

Statesboro, Georgia

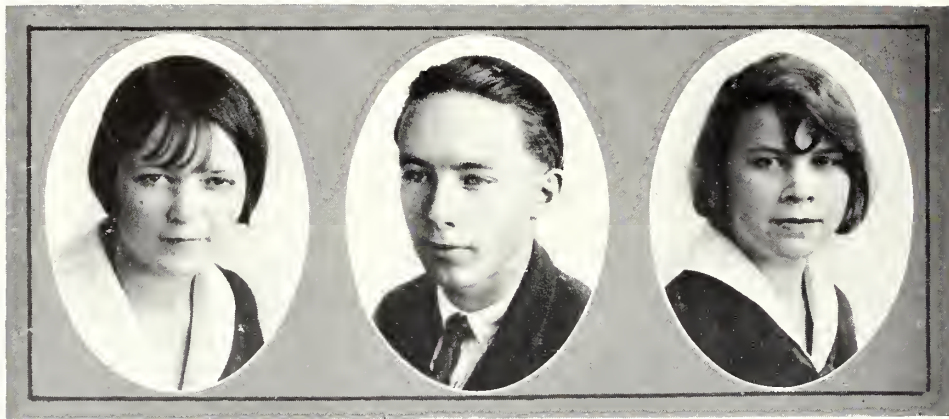
*"Grasswidow"*

*"When he was a little boy, he was so sweet and gay;  
He had to take the dogs along to keep the girls away."*

Entered '25; Member of Stephens Literary Society, President, one term; Glee Club; Education Club; Group Leader of Vesper Service, second term, '26; Vice-President Senior Class, '26; Football; Basket-ball, Baseball; B. C. Club.



# THE REFLECTOR



DICY BRANNEN  
Statesboro, Georgia

*"The first element of success is the determination to succeed."*

Entered '26; Member of B. C. Club; Day Student.

PERCY LEE COWART  
Pulaski, Georgia

*"Why should I worry, I'll get there somehow."*

Entered '26; Day Student.

LEXIE MAE BLAND  
Statesboro, Georgia

*"San"*

*"Know thyself, but don't tell everybody about it."*

Entered '23; Member of B. C. Club; Day Student.

# THE REFLECTOR



MARJORIE RUTH BOWEN

Savannah, Georgia

"Kitten"

*"The light of love, the purity of grace,  
The mind the music, breathing from her face."*

Entered '25: Secretary and Treasurer of Junior Class, '25; Member of Stephens Literary Society, '25, '26; Pianist, first term, '25; McDowell Music Club, '25, '26, President, first term, '25; Y. W. C. A.; H. E. Club; Education Club; Glee Club; Athletic Association; G. T. O. B. Club.

MITCHELL THOMAS HOLLOWAY, JR.

Metter, Georgia

"Mike"

*"Give me a bowl of wine; 'tis sweeter than a maiden's kiss."*

Entered '25: Member of Stephens Literary Society, '25, '26, Guard, '26; Basketball, Football, Baseball, '25, '26; Kangaroo Court; Vice-President C. C. Club.

ELLIE MAE BERRY

Metter, Georgia

"Ette"

*"Better not to be at all than not to be noble."*

Entered '25: Member of Oglethorpe Society.

# THE REFLECTOR



DAISY BOYKIN

Halcyondale, Georgia

*"Gentle in manner, firm in reality."*

Entered '26; Member of Oglethorpe Society; Education Club; Glee Club.

GEORGE JARRIEL

*"Jimmie"*

*"Let your conscience be your guide."*

Entered Junior Class, '25; Member of Stephens Literary Society, '26; Y. M. C. A.; Clerk of Kangaroo Court, '26.

ELIZABETH CALHOUN

Tarrytown, Georgia

*"Lib"*

*"Never take life too seriously.  
You won't get out alive anyway."*

Entered '26; Member of Stephens Literary Society; G. T. O. B. Club; Athletic Association; Glee Club; McDowell Music Club; High School Basket-ball Team.

# THE REFLECTOR



ALLENE COOPER

Dover, Georgia

"Snookums"

*"A tender heart, a will inflexible."*

Entered '26; Member of Glee Club; Stephens Society; Y. W. C. A.; H. E. Club.

HARRY JARRIEL

Collins, Georgia

"Sarge"

*"Happy am I, from care I'm free  
Why ain't they all contended like me?"*

Entered '21; Member of Stephens Society; Y. M. C. A.; Kangaroo Court.

SUSIE A. DASHER

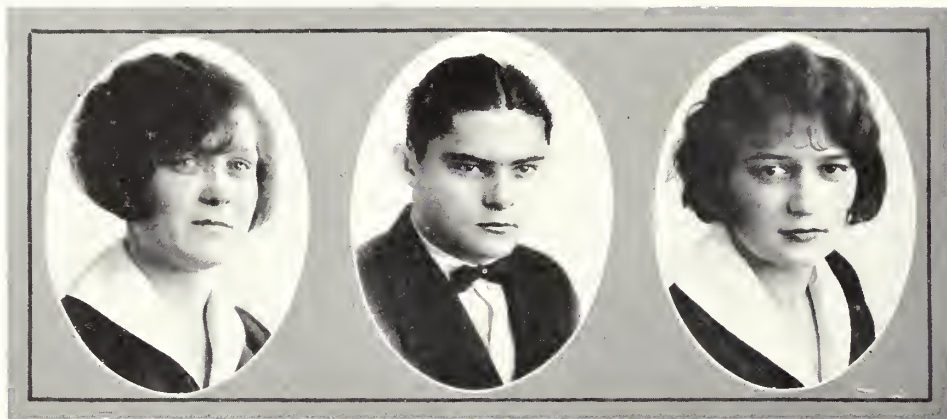
Marlow, Georgia

*"Quiet in appearance with motives unknown."*

Entered '26; Member of Oglethorpe Society; Education Club.



# THE REFLECTOR



NELLIE FRANKLIN

Statesboro, Georgia

*"Nell"*

*"I chatter, chatter, as I go."*

Entered '25; Member of B. C. Club; Day Student.

ARTHUR MENDES KICKLIGHTER

Glenville, Georgia

*"Jiggs"*

*"Let the wide world wiggle, I've got it by the tail."*

Entered '25; Member of Stephens Society, Chaplain, first term, '26; Kangaroo Court; Glee Club; Manager Basket-ball Team, '26; Y. M. C. A.; Education Club; Cheer Leader Football Team.

MARGARET LEOLA HENDRIX

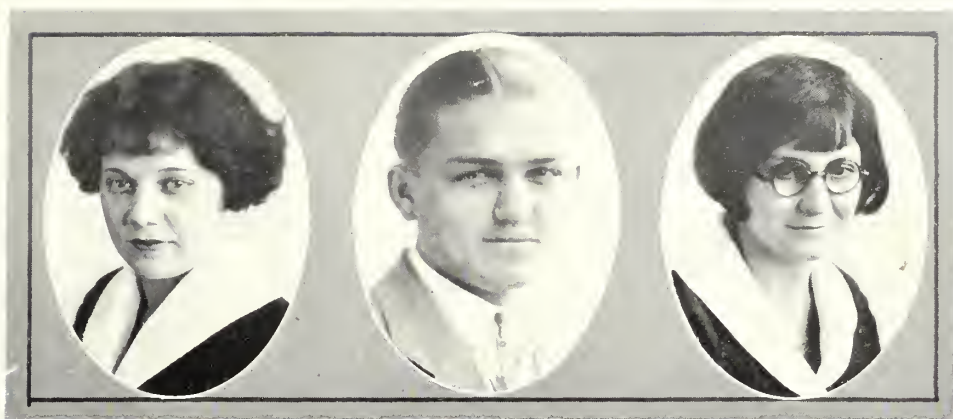
Pulaski, Georgia

*"Loly"*

*"Let me live in the house by the side of the road, and be a friend to man."*

Entered '26; Member of Stephens Literary Society, Pianist, third term; Educational Club; C. C. Club; Assistant Editor-in-Chief of The "Torch."

# THE REFLECTOR



BLANCHE JONES

Savannah, Georgia

*"Topsy"*

*"She's light and happy and gay, as full of life as a bright May Day."*

Entered '22; Member of Athletic Association; G. T. O. B. Club; Y. W. C. A.; Athletic Club; President Freshman and Sophomore Classes, '22, '25; Basket-ball Team, '22-'26. Captain, '26; Sport Editor Station G. N. S.; Cheer Leader, '25-'26.

LeGRANDE LAMB

Garfield, Georgia

*"Candy"*

*"It matters not if I won the game,  
But it matters how I won it."*

Entered '26; Member Stephens Literary Society; Basket-ball, '26.

JESSIE JOHNSON

Garfield, Georgia

*"Jake"*

*"Get the best of yourself before the other man gets it."*

Entered '25; Member of the Stephens Society, '25-'26; Education Club; Y. W. C. A.; H. E. Club; Basket-ball Team; G. T. O. B. Club.

# THE REFLECTOR



SALLIE JOHNSON

Garfield, Georgia

"Sal"

*"Speak less than thou knowest."*

Entered '26; Member of Oglethorpe Society.

HOWARD CARSWELL LANE

Dover, Georgia

"Skeet"

*"Women are the bread of life. I am hungry."*

Entered '26; Member of Glee Club; Athletic of Torch; Stephens Society; Critic, third term.

BERDIE MAE LEE

Statesboro, Georgia

"Bert"

*"Oh, We'll be gay! A bright to-day will make a bright tomorrow."*

Entered '23; Secretary-Treasurer of Class, '23; Member of Stephens Society, Historian, first term, '23, Vice-President, third term, '26; Music Club, Secretary-Treasurer, second term, '23, Secretary, second term, '24, President, '26; Basketball, '24, '26; Education Club; Vice-President H. E. Club; Athletic Club; Athletic Association; Glee Club; U. R. of Y. W. C. A.; G. T. O. B. Club.

# THE REFLECTOR



ELISE MCGREGOR  
Haleyondale, Georgia

*"Once a friend, always your friend."*

Entered '26; Member of Oglethorpe Society; Athletic Club; Glee Club.

SAM P. JONES  
Elza, Georgia

*"Goofy"*

*"It is a great plague to be too handsome a man."*

Entered '26; President Glee Club; Judge of Kangaroo Court; Business Manager of "Torch"; Education Club; Y. M. C. A.; Stephens Society, Guard, second term, Critic, first term.

MARGARET FRANCES NEWTON  
Herndon, Georgia

*"Maggie"*

*"My tongue within my lips I reign,  
For who talk much must talk in vain."*

Entered '26; Member of H. E. Club; Oglethorpe Society; Athletic Club; Basketball; Education Club.



# THE REFLECTOR



JOHNNIE CLYDE RINER

Meeks, Georgia

*"Jonnie"*

*"Talk and the world talks with you;  
Be silent and you are silent alone."*

Entered '25; Member of Oglethorpe Society; Art Club; Music Club; Glee Club.

PAUL RAULERSON

Ludowici, Georgia

*"Dean"*

*"Bite off more than you can chew, and chew it.  
Plan more than you can do, and do it."*

Entered '23; Member of Debating Team; Stephens Society, Chaplain, third term; Editor-in-Chief of Station G. N. S., '24, '25; First Leader of Vesper Service; Third Vice-President of Education Club; Solicitor of Kangaroo Court, '25, '26.

BERDIE MAE STEWART

Garfield, Georgia

*"Bert"*

*"The good die young; I want to live."*

Entered '26; Member Stephens Society; Y. W. C. A.; Education Club; H. E. Club; Athletic Club; Basket-ball Team; G. T. O. B. Club.

# THE REFLECTOR



WILLIE MAE WATSON

Metter, Georgia

*"Bill"*

*"I have a heart with room for everybody."*

Entered '25; Member of Oglethorpe Society; Athletic Club; Basket-ball; H. E. Club; C. C. Club.

JOE SIKES

Claxton, Georgia

*"Better than riches or worldly wealth  
Is a heart that is always jolly."*

Entered '23; Member of Stephens Society; Glee Club; Track Team, '25, '26.

EUNICE WILSON

Pulaski, Georgia

*"Her hair is brown, her smile is gay,  
She has a merry winning way."*

Entered '26; Member of Stephens Society; Glee Club; Education Club; C. C. Club.

# THE REFLECTOR



THELMA WILSON

Dover, Georgia

*"Jimmy"*

*"Loveliness needs not the foreign aid of ornament."*

Entered '26; Member of Stephens Society; Pianist, first term; Secretary of H. E. Club; Pianist of Glee Club; Literary Editor of The "Torch"; Y. W. C. A.

FRANK WALLSTEIN WYANT

Dover, Georgia

*"Pa Wite"*

*"It does not pay to worry; things are bound to happen anyway."*

Entered '26; Member of Stephens Society; Football, '26.

## History of Senior Class

If time should roll back her silken curtain, I wonder how we should enjoy "seeing ourselves as others see us?"

Well we remember one September morning in 1922, when we found ourselves a group of Freshmen. We soon realized that we were in the midst of a four-year's battle for high school freedom. We foresaw ourselves in our dreams as the greatest and grandest graduating class that our school would see for many years. We ran into mathematics and science. These evidently proved fatal to some of our members for they did not return the second year, but the majority worked and learned.

The second year brought many new faces to replace those who chose to linger by the wayside, or who had failed to accomplish what they should as "Freshies."

We were beginning to feel that we were nearing our goal and, of course, felt our importance. This time biology and history were the obstacles, but through many hours of work they were mastered.

We entered our Junior year with light hearts and high hopes, although our schedule was becoming heavier each year. There were new faces again in our midst.

At last the dawn of our Senior year faced us. After four years of hard study and a full determination to complete our task we, thirty-seven in number, have reached our goal. We hope that again some day we shall meet each other and the faculty in such a way that they will realize that our school days were not spent in vain.

Truly, we are glad that we have struggled through our high school days and have won the fight. We now realize that we are going out into the world to work, to study, to learn, and to do good deeds for others; therefore, let each of us take a part in the world's great plans.

MARY BRINSON, *Historian*.



# THE REFLECTOR

## Who's Who in the Senior Class

<i>Prettiest</i> . . . . .	LEOLA HENDRIX
<i>Most Attractive</i> . . . . .	THELMA WILSON
<i>Most Athletic Girl</i> . . . . .	TRUE WATSON
<i>Most Athletic Boy</i> . . . . .	ASA WALL
<i>Cutest</i> . . . . .	RUTH BOWEN
<i>Best All-round Boy</i> . . . . .	ASA WALL
<i>Best All-round Girl</i> . . . . .	THELMA WILSON
<i>Most Studious</i> . . . . .	MARY BRINSON
<i>Jolliest</i> . . . . .	MENDES KICKLIGHTER
<i>Neatest</i> . . . . .	RUTH BOWEN
<i>Most Talented</i> . . . . .	THELMA WILSON
<i>Most Intellectual</i> . . . . .	PAUL RAULERSON
<i>Quietest</i> . . . . .	MAGGIE NEWTON
<i>Most Handsome Boy</i> . . . . .	SAM JONES

## Senior Class Poem

### Hope

*When everything has gone all wrong,  
And sorrow's clouds hang low,  
A thought goes with me all day long  
That frees my soul from woe.*

*When the fond wish for which I long  
Does fade and melt away,  
I have a thought that brings a song,  
That cheers me on my way.*

*When friends prove false, whom I thought true,  
And hurtful words are spoken,  
I have a thought of roseate hue,  
That heals a heart that's broken.*

*I think of Hope who plays her harp,  
With just a lovely string,  
So as long as God does life impart,  
I, too, shall play and sing.*





## Junior Class

ALEX TIPPENS . . . . . *President*  
 ANSEL FRANKLIN . . . . . *Vice-President*  
 DELLE HAGIN . . . . . *Secretary and Treasurer*  
 MOTTO: "The elevator to success is not running; take the stairs."  
 COLORS: *Gold and White* FLOWER: *Marechal Niel Rose*

ALEXANDER L. TIPPENS, JR.  
 Daisy, Georgia  
 "Speedy"

Entered '25; President Sophomore Class; Member of Stephens Society, President, second term, '26; President of Junior Class; Y. M. C. A.; Football.

MARGARET DELLE HAGIN  
 Statesboro, Georgia  
 "Dell"

Entered '24; Member of Oglethorpe Society; Civics Club; Dramatic Club; Y. W. C. A.; Secretary of Junior Class.

ARLEY BRANNEN  
 Statesboro, Georgia  
 "Arley"

Entered '23; Member of Oglethorpe Society; Y. W. C. A.; B. C. Club.

# THE REFLECTOR



KATHRYN EMELYN KING

Riceboro, Georgia

*"Emelyn"*

Entered '24; Member of Oglethorpe Society, Secretary, third term; Civics Club, '24; Music Club; Y. W. C. A.; Glee Club.

GEORGE ANSEL FRANKLIN

Kathwood, South Carolina

*"Mr. Hollis"*

Entered '24; Member of Oglethorpe Society, President, first term; Glee Club; Civics Club, '24; Football.

MARJORIE EARLE LEE

Leefield, Georgia

*"Earl"*

Entered '25; Member of Oglethorpe Society; Y. W. C. A.; Music Club.



# THE REFLECTOR



JAMES GRADY WILSON

Summit, Georgia

*"Jay"*

Entered '25; Member of Stephens Society; Member of Baseball, Football and Basket-ball Teams.

FANNIE BELLE HOLTON

Soperton, Georgia

*"Funnie Belle"*

Entered '26; Member of Oglethorpe Society; H. E. Club; Dramatic Club.

MARIE CELIA MIKELL

Statesboro, Georgia

*"Rosy"*

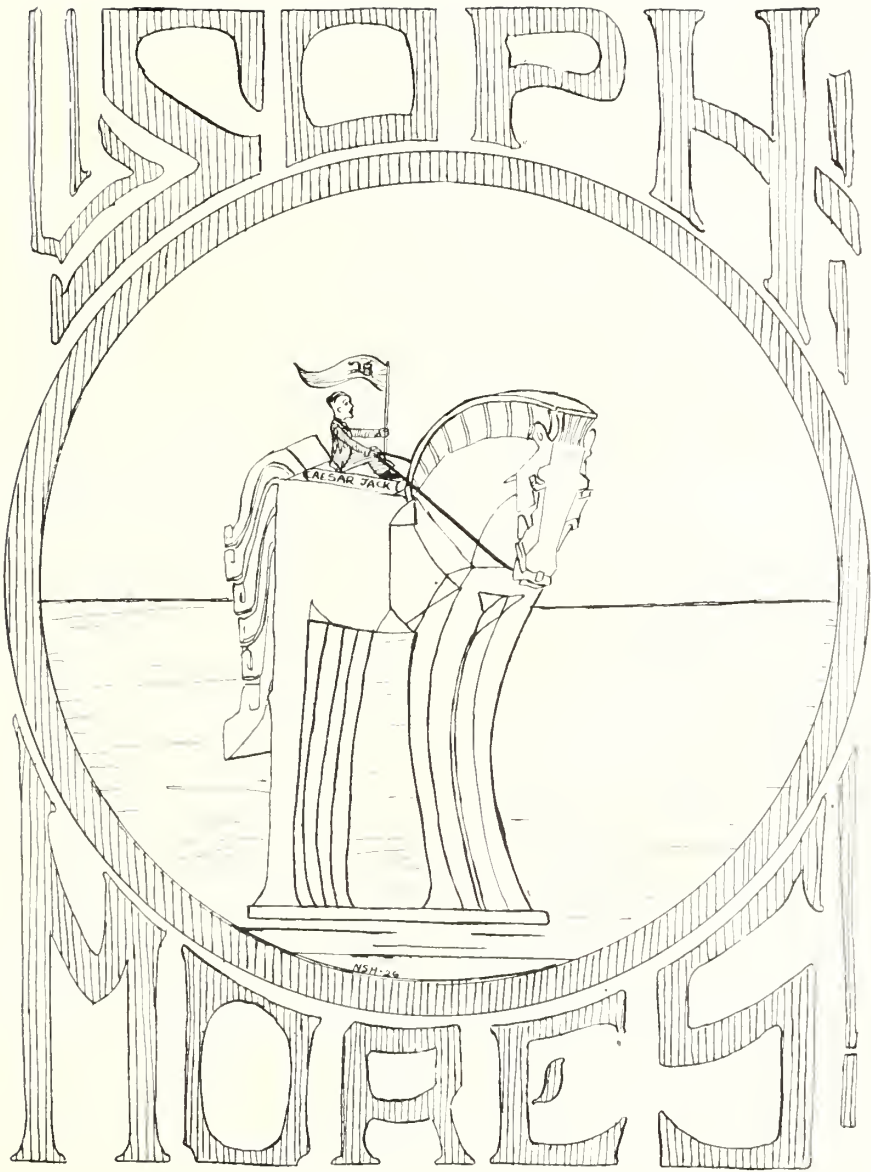
Entered '24; Member of Civics Club; Member of Oglethorpe Society.

MONTGOMERY PRESTON

Statesboro, Georgia

*"Morning Glory"*

Entered '26; Member of Stephens Literary Society; Glee Club; Day Student.



# THE REFLECTOR



## Sophomore Class

MOTTO: *"The door to success is labeled P-U-S-H."*

COLORS: *Purple and Lavender*

FLOWER: *Violet*

AMY LUCILE GIBBS

*Tifton, Georgia*

*"Tootsie"*

Entered '26; President of Class; Secretary and Treasurer of Stephens Literary Society, second term; Member of Glee Club; Y. W. C. A.; H. E. Club; Athletic Club.

JOHN D. WATSON

*Metter, Georgia*

*"J. D."*

Entered '26; Vice-President of Class; Member of Oglethorpe Society; Y. M. C. A.; C. C. Club.

ELSIE MAE GOODMAN

*Orangeburg, South Carolina*

*"Goodie"*

Entered '25; Secretary and Treasurer of Class; Member of Y. W. C. A.; Stephens Literary Society; Athletic Club.

ROBERT COURSEY

*Lyons, Georgia*

*"Corsey"*

Entered '25; Representative of Class; Member of Athletic Club; Y. M. C. A.; Stephens Society, Vice-President, second term; Football; Basket-ball.

# THE REFLECTOR



HARMON ALDERMAN

Statesboro, Georgia

*"Hey"*

Entered '25; Member of Oglethorpe Society; Y. M. C. A.; B. C. Club.

LINCOLN BOYKIN

Halcyondale, Georgia

*"Lancon"*

Entered '26; Member of Oglethorpe Society; Vice-President, second term; Y. M. C. A.; Group Leader of Vesper Services, third term.

JEANETTE GRACE

Uvalda, Georgia

*"Grace"*

Entered '26; Member of Oglethorpe Society; Y. W. C. A.; Athletic Club; Music Club.

JAMES PRICE

Oak Park, Georgia

*"Wild Boy"*

Entered '26; Chaplain of Stephens Society, second term; Member of Y. M. C. A.; Athletic Club.



# THE REFLECTOR



HERE AND THERE

# THE REFLECTOR



BOYS' ATHLETICS

# THE REFLECTOR



## Oglethorpe Literary Society

MOTTO: "With the ropes of the past we will ring the bells of the future."

FLOWER: *White Rose*

MISS HAYNES AND MISS JOHNSON . . . . . Sponsors

### MEMBERS

ANSEL FRANKLIN . . . . .	<i>President, first term</i>
RUTH BELCHER . . . . .	<i>President, second term</i>
DOROTHY THOMAS . . . . .	<i>President, third term</i>
MAGGIE NEWTON	JOHN D. WATSON
ADA LOU ROWE	ELLIE MAE BERRY
EARLE LEE	LINCOLN BOYKIN
JOHNNIE CLYDE RINER	DELLE HAGIN
WILLIE MAE WATSON	DAISY BOYKIN
MARY LOU COWART	FANNIE BELLE HOLTON
JEANETTE GRACE	ANNIE MAE WILEY
ELISE MCGREGOR	BERNICE LEE
EMELYN KING	SUSIE DASHER
SALLIE JOHNSON	MARGARET MATTHEWS
TRUE WATSON	ARLEY BRANNEN



# THE REFLECTOR



## Y. M. C. A. Cabinet For 1925-26

ANNIE NELLA SCREWS . . . . .	<i>President</i>
THELMA JOHNSON . . . . .	<i>Vice-President</i>
JANIE WARREN . . . . .	<i>Secretary</i>
DOROTHY THOMAS . . . . .	<i>Treasurer</i>
BERTIE MAE LEE . . . . .	<i>Under-graduate Rep.</i>

The Y. W. C. A. attempts, through its weekly meetings, to bring all the girls together in a devotional service. Prayer-meetings are held each night at 9:30 o'clock.

At Thanksgiving, the Y. W. C. A., together with the Y. M. C. A., sent an offering to the Bethany Home at Vidalia, Georgia.

It is our hope to establish a scholarship fund next year, which will aid some worthy girl to attend school.



# THE REFLECTOR



## Stephens Literary Society

### OFFICERS

#### *First Term*

ASA WALL . . . . .	President
CLYDE BARBER . . . . .	Secretary and Treasurer

#### *Second Term*

ALEX TIPPENS . . . . .	President
AMY GIBBS . . . . .	Secretary and Treasurer

#### *Third Term*

HARVEY CALHOUN . . . . .	President
BERDIE MAE LEE . . . . .	Secretary and Treasurer
MISS TUBB . . . . .	Sponsor

# THE REFLECTOR



## Stephens Literary Society

### MEMBERS

AUBREY ALDERMAN  
RUTH BOWEN  
MYRENE BROWN  
HARVEY CALHOUN  
ROBERT COURSEY  
MARION DU BOSE  
ELSIE MAE GOODMAN  
LEOLA HENDRIX  
BLANCHE JONES  
BLANCHE JOHNSON  
MENDES KICKLIGHTER  
HOWARD LANE  
ARRIE LOU LEE  
MONTGOMERY PRESTON  
LUCY RAE RUSHING

ANNIE NELLA SCREWS  
ALEX TIPPENS  
THELMA WILSON  
ASA WALL  
BERNICE WILSON  
WALTON WARNOCK  
THELMA JOHNSON  
MARY BRINSON  
CLYDE BARBER  
JUANITA BLAND  
ELIZABETH CALHOUN  
LUCILE DEKLE  
AMY GIBBS  
MIKE HOLLOWAY

GEORGE JARRIEL  
JESSIE JOHNSON  
SAM JONES  
LE GRANDE LAMB  
BERDIE MAE LEE  
OLLIE MAE LANIER  
JAMES PRICE  
PAUL RAULERSON  
BERDIE MAE STEWART  
WILLIE BELLE WATERS  
FRANK WYANT  
JANIE WARREN  
GLADYS WARREN  
JOE SIKES  
MISS ELIZABETH BRUCE

# THE REFLECTOR



## The Torch Staff

JANIE WARREN . . . . .	<i>Editor-in-Chief</i>
LEOLA HENDRIX . . . . .	<i>Assistant Editor</i>
SAM P. JONES . . . . .	<i>Business Manager</i>
ALEX L. TIPPENS, JR. . . . .	<i>Asst. Business Manager</i>
THELMA WILSON . . . . .	<i>Literary Editor</i>
DOROTHY THOMAS . . . . .	<i>Verse Editor</i>
MARION DuBOSE . . . . .	<i>Scrap-bag Editor</i>
ELSIE MAE GOODMAN . . . . .	<i>Joke Editor</i>
LUCILE DEKLE . . . . .	<i>Local Editor</i>
BERNICE WILSON . . . . .	<i>Alumni Editor</i>
HOWARD LANE . . . . .	<i>Athletic Editor</i>





## Whistler Art Club

COLOR: *Yellow and White*

FLOWER: *Shasta Daisy*

DOROTHY THOMAS . . . . .	<i>President</i>
BERNICE WILSON . . . . .	<i>Vice-President</i>
THELMA JOHNSON . . . . .	<i>Secretary &amp; Treasurer</i>
MRS. MATTHEWS . . . . .	<i>Sponsor</i>
MARGARET MATTHEWS . . . . .	<i>Mascot</i>
RUTH BELCHER	MARY LOU COWART
JOHNNIE CLYDE RINER	LUCILE DEKLE
ARRIE LOU LEE	OLLIE MAE LANIER
ADA LOU ROWE	BERNICE LEE
LUCY RAE RUSHING	JANIE WARREN
MISS LOTTIE McELVEEN	MISS HATTIE POWELL
MISS FLORRIE MATHIS	MISS MABEL BRUNSON



# THE REFLECTOR



## Richards Home Economics Club

DOROTHY THOMAS . . . . .	<i>President</i>
BERDIE MAE LEE . . . . .	<i>Vice-President</i>
MYRENE BROWN . . . . .	<i>Corresponding Secretary</i>
THELMA WILSON . . . . .	<i>Recording Secretary</i>
BLANCHE JONES . . . . .	<i>Treasurer</i>
MISS ELIZABETH BRUCE AND MISS MALVINA TRUSSEL . . . . .	<i>Supervisors</i>
MARJORIE ANNE HOLLIS . . . . .	<i>Mascot</i>

MOTTO: "Patience wins."

# THE REFLECTOR



## Richards Home Economics Club

BLAND, JUANITA  
BOWEN, MARJORIE RUTH  
BROWN, MYRENE

CALHOUN, ELIZABETH

COOPER, ALLENE

COWART, JUANITA

GIBBS, AMY

HOLTON, FANNIE BELLE

JOHNSON, JESSIE

WILSON, THELMA

JONES, BLANCHE

LEE, ARRIE LOI

LEE, BERTIE MAE

NEWTON, MAGGIE

STEWART, BERTIE MAE

THOMAS, DOROTHY

WARREN, GLADYS

WATSON, WILLIE MAE

WATSON, TRUE

# THE REFLECTOR



## Education Club

PAUL RAULERSON . . . . .		<i>President</i>
JANIE WARREN . . . . .		<i>Vice-President</i>
BLANCHE JOHNSON . . . . .		<i>Secretary</i>
MISS HAYNES . . . . .		<i>Sponsor</i>
BERNICE LEE	EUNICE WILSON	TRUE WATSON
DICY BRANNEN	THELMA JOHNSON	MAGGIE NEWTON
SUSIE DASHIER	WILLIE BELLE WATERS	RUTH BOWEN
ELISE MCGREGOR	SAM JONES	MYRENE BROWN
LUCILE DEKLE	BERNICE WILSON	ANNIE MAE WILEY
MENDES KICKLIGHTER	WILLIE MAE WATSON	LUCY RAE RUSHING
JUANITA BLAND	AUBREY ALDERMAN	DAISY BOYKIN
OLLIE MAE LANIER	JESSE JOHNSON	BERTIE MAE LEE
ANNIE NELLA SCREWS	LEOLA HENDRIX	RUTH BELCHER
DOROTHY THOMAS	GLADYS WARREN	MARION DUBOSE
	BERDIE MAE STEWART	



# THE REFLECTOR



## Glee Club

SAM JONES		<i>President</i>
THELMA WILSON		<i>Pianist</i>
MISS COLEMAN		<i>Sponsor</i>
AUBREY ALDERMAN	ELSIE MAE GOODMAN	ARRIE LOU LEE
DAISY BOYKIN	LEOLA HENDRIX	OLLIE MAE LANIER
MARY BRINSON	BLANCHE JONES	ELISE MCGREGOR
RUTH BOWEN	MENDES KICKLIGHTER	MONTGOMERY PRESTON
ELIZABETH CALHOUN	EMELYN KING	LUCY RAE RUSHING
ALEEN COOPER	HOWARD LANE	ANNIE NELLA SCREWS
LUCILE DEKLE	BERTIE LANIER	JOE SIKES
MARION DUBOSE	BERTIE MAE LEE	EUNICE WILSON
JEANETTE GRACE	BERNICE LEE	BERNICE WILSON
AMY GIBBS		ASA WALL



# THE REFLECTOR



GIRLS' ATHLETIC CLUB

# THE REFLECTOR



GIRLS' ATHLETIC CLUB

# THE REFLECTOR



## Dramatic Club

LUCILE DEKLE . . . . .	<i>President</i>
BERNICE WILSON . . . . .	<i>Vice-President</i>
THELMA JOHNSON . . . . .	<i>Secretary and Treasurer</i>
MRS. J. O. JOHNSTON . . . . .	<i>Sponsor</i>
RUTH BELCHER	MARY LOU COWART
ADA LOU ROWE	FANNIE BELLE HOLTER
WILLIE BELLE WATTERS	ELSIE MAE GOODMAN
JANIE WARREN	





# THE REFLECTOR



## Bulloch County Club

BERNICE LEE . . . . . *President*      RUTH BELCHER, *Secretary & Treasurer*  
 AUBREY ALDERMAN . . . *Vice-President*      MISS BRUNSON . . . . . *Sponsor*  
 HARMON ALDERMAN, JUANITA BLAND, LEXIE MAE BLAND, DICY BRANNEN, ARLEY BRANNEN, NELLIE FRANKLIN, DELLE HAGIN, MRS. J. O. JOHNSON, BERTIE LANIER, OLLIE MAE LANIER, EARLE LEE, BERTIE MAE LEE, MARIE MIKELL, MONTGOMERY PRESTON, SELMA RUSHING, LUCY RAE RUSHING.

## Candler County Club

ASA WALL . . . . . *President*      TRUE WATSON . . . . . *Secretary*  
 MIKE HOLLOWAY . . . *Vice-President*      MISS MATHIS . . . . . *Sponsor*  
 ELLIE MAE BERRY, LUCILE DEKLE, JANIE WARREN, GLADYS WARREN, WILLIE MAE WATSON, JOHN D. WATSON, BERNICE WILSON, EUNICE WILSON, PERCY LEE COWART, LEOLA HENDRIX.





# THE REFLECTOR

## Calendar

---

- September 15—School opens.  
September 18—Opening reception.  
September 22—Girls' initiation.  
September 24—Society initiations.  
September 28—Boys "Run the Gauntlet."  
October 16—First football game with A. R. C.  
October 31—Hallowe'en Party given by Seniors.  
November 6—Football game with Benedictine.  
November 16-21—Education Week observed.  
November 24—"Mike" wears a rose to have picture taken.  
November 26—G. N. S. boys beat B. P. I. boys at football.  
November 27—Sophomore Dinner Party.  
December 3—Term exams begin.  
December 4—Football reception given by Mr. Cromartie.  
December 13—Rules off for 1½ hours.  
December 11—Sophomore privileges.  
December 18—Go home for Christmas holidays.  
January 4—School reopens. A few new faces seen on campus.  
January 11—Breakfast without grits.  
January 20—Boys begin waiting on table. Mary Lou cuts her hair.  
January 23—No chapel.  
January 24—Not required to go to church.  
January 26—Began making pictures for "The Reflector."  
February 15—Miss Lendhoff lectures to girls.  
February 17—Blanche and Jake have their hair cut "boy bob."  
March 4—Second term exams begin.  
March 8—Blanche Johnson begins taking Home Economics.  
March 9—"Marriage Made Easy"—A play presented by Ruth Belcher. Several girls interested.  
April 1—Bedlam turned loose.  
April 14-19—Spring holidays.  
May 20—"The Reflector" arrives. Much rejoicing.  
June 7—Graduation exercises.  
June 8—Home Sweet Home.

# JOKES-ADDS



## Jokes

Miss Haynes (in methods class): "Lucile, what is meant by teaching a subject inductively?"

Lucile Dekle: "It means inducing the children to learn."

\* \* \* \* \*

Mary Brinson (crying): "Walton, you've broken that promise you made me."

Walton Warnock: "Never mind, dear. Don't cry. I'll make you another."

\* \* \* \* \*

Miss Stubbs: "I don't intend to be married until I am thirty."

Miss Trussell: "I don't intend to be thirty until I am married."

\* \* \* \* \*

Ada Rowe: "I don't know whether to become a poet or a painter."

Ruth: "Become a poet."

Ada: "Have you seen any of my poems?"

Ruth: "No, but I've seen some of your pictures."

\* \* \* \* \*

Miss Trussel (in zoology): "We will now name all the lower animals in their order, beginning with Ammie Nella."

\* \* \* \* \*

Howard Lane: "What would you say if I threw you a kiss."

Bertie Mae Lee: "I'd say you were the laziest boy I ever knew."

\* \* \* \* \*

Lexie Mae Bland: "What a pity it is that all handsome men are conceited."

Sam Jones: "Not always; I'm not."

\* \* \* \* \*

Miss Johnson (entering French Class and finding only Montgomery present): "Well, where are all the rest of the fools?"

Montgomery Preston: "I don't know, Miss Johnson, it seems that we are the only two here."

\* \* \* \* \*

Robert Coursey (in barber chair): "Be careful not to cut my hair too short. People might take me for a girl."

\* \* \* \* \*

Miss Tubb (in English): "Why Milton would spend a whole week on one paragraph."

Thelma Johnson: "That's nothing. I'm spending thirty days on one sentence."

\* \* \* \* \*

Ansel Franklin: "Are you the boot black who shined my shoes last?"

Boot black: "No, sir, I've been here only a year."

# THE REFLECTOR

"Candy studied Latin  
Candy had a 'Trot'  
Did he leave it in his room all its help forgot  
Did he stammer o'er the words  
Fearing Miss Johnson's look?  
No, he tore the pages out  
And read them from his book."

\* \* \* \* \*

Garageman: "There's always something broken about your car."  
Mr. Hollis: "There certainly is, when I am around."

\* \* \* \* \*

Mr. Mathews says the poet tells us to leave our foot prints on the sands of time,  
but not on the new cement being laid on the campus.

\* \* \* \* \*

Miss Tubb: "Mendes, if I should say 'I have a million dollars' what tense would  
that be?"

Mendes Kicklighter: "That would be pretense."

\* \* \* \* \*

Joe Sikes had just stood an examination in mathematics, in which he made an "F."  
He said: "Miss Perry, I don't think I should get an 'F' on this test."  
"Neither do I," answered Miss Perry, "but it was the lowest I could give you."



*WE ARE HERE TO SERVE YOU*

and nothing will please us so much as to  
have you give us the opportunity.

## THE SEA ISLAND BANK

STATESBORO, GEORGIA

*THE BANK OF PERSONAL SERVICE*

### AMUSU THEATRE

*The Home of*  
*HIGH CLASS PHOTOPLAYS*

A Place for the Live Ones

*Change of Program*  
TUESDAY, THURSDAY  
AND SATURDAY

P. G. WALKER, *Manager*

*Pure Drugs      Prices Right*  
*Quality and Service*

STERILE FRIGIDAIRE  
FOUNT

HOLLINGSWORTH'S  
UNUSUAL CANDIES

### HOLLAND DRUG COMPANY

*"Where The Crowds Go"*

Phone 414

Statesboro,

Georgia

*Who's Your Jeweler?*

TRY  
**SMITH**

20 South Main Street

Statesboro, Georgia

*Diamond Work and Remodeling  
Old Jewelry a Specialty*

*"EXPERT REPAIRING"*

*THE REXALL STORE*

*Everything in Drugs*

LIGGETT'S and NUNNALLY'S  
PRODUCTS

KODAKS

CIGARS, TOBACCO

STATIONERY, MAGAZINES

**FRANKLIN DRUG  
COMPANY**

*"A Good Drug Store"*

Phone 2

*Ship Us Your Cream*

We pay Chicago standards and express charges on all shipments. Cans and checks returned promptly. Small shipments receive same service as large.

*"Where Personal Service  
Is a Pleasure"*

**DUBLIN CREAMERY.**

*Buy Goldell Butter*

Made from thoroughly pasteurized cream. Churned fresh daily in our sanitary creamery.

*"It Has a Better  
Flavor"*

**DUBLIN, GA.**

**WILLCOX**

*"The Furniture Man"*

Furniture and House  
Furnishing Goods

*Agent for*  
Columbia Graphophones  
Statesboro, Georgia

**Statesboro Grocery  
Company**

*Wholesale Distributors of the  
Famous Birdseye Flours*

**E. C. OLIVER CO.**

LADIES' and GENTS'  
READY-TO-WEAR  
*Store of Quality*

Statesboro, Georgia

BIRDSEYE'S BEST—PLAIN

LIGHTHOUSE—SELF-  
RISING

*"None Better At Any Price"*

COMPLIMENTS  
OF

**W. H. ELLIS  
COMPANY**

**S. J. PROCTOR**

CONTRACTOR  
—and—  
BUILDER

Phone 446

**Lannie F. Simmons**

Staple and Fancy Groceries  
Seed and Feed

*We Sell the Best for Less.*

Phones 20-366 Statesboro, Ga.

When your school days have  
ended and the building of a  
home is in order

*REMEMBER*

**MERRY  
BROTHERS**

Augusta, Georgia

*The Largest Manufacturers of  
BRICK and TILE  
in the Southeast.*

*Compliments of*

**West Side Pharmacy**

*Reliable Druggists*

Phone 453

14 W. Main

**Raines Hardware Co.**

*The Store of Service and  
Quality*

Phone 6

Statesboro, Ga.

**Cecil W. Brannen**

*HARDWARE  
GROCERIES*

Telephone 239

28 - 30 West Main Street

*COMPLIMENTS OF*

**CRANE CO.**

**Martin's Bakery**

*You will enjoy our fine  
Cakes, Pies and Bread*

Phone No. 473

Savannah, Georgia



**PRESTON  
FILLING STATION**

GAS, OIL, GROCERIES  
AND DRINKS

One mile out on road  
to Normal School

WE SELL THAT  
"GOOD GULF GAS"

*The "Supreme" and "Mobile"  
Oils*

VISIT US—

*The Place of Courtesy*

**BANK OF  
STATESBORO**

Statesboro, Georgia

CAPITAL, SURPLUS  
AND PROFITS

\$200,000.00

Established 1894

J. W. Parks      M. R. Olliff

**OLLIFF FUNERAL  
HOME**

*AMBULANCE*

*LADY ASSISTANT*

PHONES      { Day 467  
                     { Night 465

Statesboro, Georgia

**AVERITT  
BROTHERS  
AUTO CO.**

Sales  Service

Phone 103      Statesboro, Ga.

S. W. LEWIS

*FORD  
PRODUCTS*

Statesboro, : Georgia

FRED T. LANIER

*ATTORNEY AT LAW*

First National Bank  
Building

Statesboro, : Georgia

## Confidence---

We feel that our past record and steady growth  
are evidence that we are worthy of your confidence.  
The policies of this bank are founded on honest,  
upright principles. Strict adherence to honest,  
sound methods has done much toward the growth  
of this institution. : : : :

## The First National Bank

STATESBORO, GEORGIA

# COMMENCEMENT INVITATIONS

RECEPTION AND VISITING CARDS

MONOGRAM STATIONERY

DANCE PROGRAMS

DIPLOMAS

FRATERNITY AND CLASS STATIONERY

INVITATIONS AND ANNOUNCEMENTS FOR ALL

OCCASIONS CORRECTLY AND PROMPTLY

ENGRAVED

*SEND FOR OUR SAMPLES AND PRICES*

**J. P. STEVENS ENGRAVING CO.**

*SOCIETY ENGRAVERS*

103 PEACHTREE STREET,

ATLANTA, GEORGIA

**BLITCH-PARRISH  
COMPANY**

*SELLS  
THE BEST OF EVERYTHING  
TO WEAR*



Statesboro, : Georgia

*GREETINGS TO  
GEORGIA NORMAL  
STUDENTS*

—FROM—

**MICHAEL BROS.  
Inc.**

Athens, : Georgia

*HIGH GRADE  
BUILDING  
MATERIAL*

WHITE PINE SASH  
AND DOORS

**LANG'S VARIETY  
WORKS**

Sandersville, Georgia

**NORTHCUTT  
BROTHERS**

*MASTER  
CLEANERS and DYERS*

Forty-one East Main Street

Statesboro, Georgia

Phone 18

*WE KNOW HOW*

A Truck for a Phone Call.



*ATHLETIC GOODS*

Send us your orders for athletic goods and we can continue this advertisement every year.



**CLANTON & WEBB  
COMPANY**

147 Whitehall Street  
Atlanta, Georgia

**B. V. COLLINS**

ANYTHING TO WEAR

—for—

MEN, WOMEN and CHILDREN

**Cowart & Donaldson**

*Fire Insurance Life Insurance  
Bonds*

Farm Loans and Investments

Statesboro, Georgia

*We Patronize Those  
Who Patronize Us*

**Crescent Stores**

19-21 W. Main St., Statesboro

**Norman Junk and  
Salvage Company**

*TURN YOUR JUNK INTO MONEY*

I buy worthless automobiles and carry used parts for all cars.

Phone 431

44 W. Main

*I SHIP PROMPTLY AND  
COLLECT PROMPTLY*

*"This is Dorman's Broadcasting"*  
From Station A-L-F-R-E-D  
which the Central Depot is next to in  
Statesboro, Bulloch County, Ga.  
*"Where Nature Smiles"*

FOR FULL CREAM CHEESE DEMAND  
*"Kraft's Elkhorn"*  
Decidedly Better

*Distributed by—*

**ALFRED DORMAN**

*WHOLESALE*

FRUIT, PRODUCE, PROVISIONS

From Where They Are  
To Where They Ain't  
The Year Round

Good Things To Eat Since 1893.

SCHOOL BOOKS AND  
SCHOOL SUPPLIES

SEEDS FOR THE GARDEN AND  
FIELDS

*FEED OF ALL KINDS*

**Olliff & Smith**

*Courteous Prompt Efficient*

**The Flanders  
Printing Company**

of Statesboro, Ga.

*Better Printing  
at Moderate  
Prices*

1. THE ACME TEACHERS' AGENCY is constantly placing teachers.

2. Our clients' interests are our interests.

3. We get results.

4. A satisfied client is our greatest pride.

A. C. WHITEHEAD,  
Healey Bldg.  
Atlanta, Georgia

**CITY**

**DRUG**

**COMPANY**

*DRUGS,*

*STATIONERY,*

*TOILET ARTICLES*

PHONE 37

**ZIZZETT'S  
Barber Shop**

We Solicit Your Patronage.

*First Class Work*

C. H. Zizzett, *Proprietor*

**Dr. E. N. Brown**

*DENTIST*


Oliver Building

# *NuGrape*

Reg. U S Pat Off

IMITATION GRAPE — NOT GRAPE JUICE

## *A FLAVOR YOU CANT FORGET*

DEMAND IT IN THIS BOTTLE 

To Avoid Substitution and  
Disappointment

EVERY BOTTLE STERILIZED AND  
THOROUGHLY INSPECTED BEFORE  
LEAVING OUR PLANT.

WE ARE BOTTLERS OF HIGH GRADE  
SODAS AND GINGER ALE.

"QUALITY AND SERVICE"  
OUR MOTTO

PHONE 487

NU-GRAPE  
BOTTLING  
COMPANY

STATESBORO, GEORGIA



## MAYS & OLLIFF

*Dealers for*

HUDSON, ESSEX

AND

CHRYSLER

*PARTS AND SERVICE*

No. 55 E. Main Street

Statesboro. : Georgia



"HAJOCA," formed from the corporate names of Haines, Jones & Cadbury Co., stands for sixty years' experience and success in making the most modern and approved plumbing supplies and sanitary fixtures and is inseparably linked with the reputation that has followed Hajoca quality. The trade-mark designates our confidence in the worth and quality of Hajoca products and is the guarantee of right design, careful workmanship, casting service and complete satisfaction.

HAINES, JONES & CADBURY CO.,  
Savannah, Ga., Branch.

## Anderson & Jones

*ATTORNEYS AT LAW*

Bank of Statesboro Building

### TRY US ONCE

Learn how well we execute all shoe repairs and you and we will have gained. Shoes may be mended or renovated several ways. You will agree that our way is the best you have found. Charges are no higher here than elsewhere...it's in the way our work stands up that the difference lies.

## J. MILLER SHOE & HARNESS FACTORY

Phone 400

33 West Main St.

## Statesboro Buggy and Wagon Co.

*HARDWARE AND  
FARM IMPLEMENTS*

*Horses and Mules*

*Wire Fencing*

PHONE 227



# HERFF - JONES COMPANY

*MANUFACTURING JEWELERS AND  
STATIONERS*

INDIANAPOLIS, INDIANA

*OFFICIAL JEWELER FOR  
GEORGIA NORMAL SCHOOL*

## Class Rings and Pins

IF YOU DID NOT GET A CLASS PIN OR RING WHEN IN SCHOOL,  
SEND FOR IT NOW. INDIVIDUAL ORDERS  
FILLED ANY TIME.

*H. S. CANFIELD,*

*Georgia Representative*

# The Charm of Purity with~

Its satisfying taste and its cooling, thirst-quenching character make it the most refreshing drink of all.



## A Perfect Coca-Cola

Use the thin 6-oz. glass. Draw 1 oz. of Coca-Cola syrup. Add 5 ozs. of cold carbonated water. Put in a little cracked ice. Stir with a spoon until the sparkling bubbles come to a bead at the top.

The Coca-Cola Company, Atlanta, Ga.

*PHOTOGRAPHS FOR THIS ANNUAL BY*

# RUSTIN'S STUDIO

GO TO

RUSTIN'S STUDIO

—FOR—

## HIGH CLASS PHOTOGRAPHS

*SPECIAL FACILITIES FOR EXTERIOR WORK*

*GROUP PICTURES, BUILDINGS, ETC.*

*SPECIALTY*

PHOTOGRAPHIC ENLARGEMENTS AND FRAMING.

FRAMES MADE TO ORDER.

*LOWEST PRICES*

*Be Photographed This Year on Your Birthday*

# ENJOY THIRST

5c GIVES YOU THE BEVERAGE  
THAT DELIGHTS TASTE AND  
TRULY QUENCHES THIRST.

*PURE AND WHOLESOME*

DRINK

The Coca-Cola logo is rendered in its iconic script font. The letters are bold and fluid, with a slight shadow effect beneath the main text. A small, rectangular label is visible on the lower part of the 'Coca' section, containing the words 'TRADE MARK' and 'BOTTLED'.

IN BOTTLES

*PREPARED WITH THE FINISHED ART THAT COMES FROM  
A LIFETIME OF PRACTICE.*



<p><b>Baxter's Barber Shop</b></p> <p><i>Where the Promise Is Performed</i>      <i>Ladies and Children a Specialty</i></p>	<p><b>L. J. Shuman &amp; Co.</b></p> <p><i>GROCERIES</i></p> <p>Fresh and Cured Meats Fish and Oysters</p> <p>Statesboro,      :      Georgia</p>
<p><b>Dr. Oscar Johnson</b></p> <p><i>DENTIST</i></p> <p>Statesboro,      :      Georgia</p>	<p><b>Deal and Renfroe</b></p> <p><i>ATTORNEYS AT LAW</i></p> <p>Statesboro,      :      Georgia</p>
<p><b>W. O. Shuptrine</b></p> <p><i>Keeps Up the Quality and Down the Price</i></p>	<p><b>Southern Teachers' Agency</b></p> <p>Four Offices—Continuous Enrollment, No Advance Fees</p> <p>Our business is to place the right teacher in the right position at the right time. We cover South, Middle Atlantic and Middle West States.</p> <p>Columbia, S. C.   Chattanooga, Tenn. Richmond, Va.   Louisville, Ky.</p>
<p><b>Kennedy's Filling Station</b></p> <p><i>AUTO ACCESSORIES</i></p> <p>Phone 351      Tires, Tubes, North Main      Gas, Oil, Street      Free Air</p>	<p><b>Howell Cone</b></p> <p><i>ATTORNEY AT LAW</i></p> <p>Statesboro,      :      Georgia</p>

**Dr. D. R. Dekle**

*OPTOMETRIST*

Bank of Statesboro Building  
Statesboro, Georgia

**Hinton Booth**

*ATTORNEY AT LAW*

4 Courtland Street

Statesboro, : Georgia

**Savannah Mattress  
Company**

*Manufacturers and Renovators  
of Felt and Cotton Pillows,  
Mattresses, Etc.*

318-320 East Bay Street

Phone 3296

David Simmons & Sons, Props.

Residence: 521 Nicoll Street

Phone 3235-J

Savannah, : Georgia

*COMPLIMENTS OF*

**Southern Spring  
Bed Company**

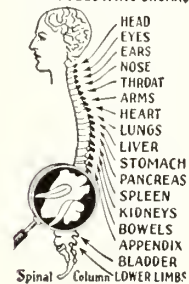
Atlanta, Georgia

*Manufacturers of*

BLUE RIBBON BEDS,  
MATTRESSES, SPRINGS,  
RED CROSS MATTRESSES

**HEALTH FOLLOWS**

CHIROPRACTIC CORRECTS  
PRESSURE ON SPINAL  
NERVES IN DISEASES OF  
THE FOLLOWING ORGANS:



**Dr. J. M. Burgess**

*CHIROPRACTOR*

# THE CHAMBER OF COMMERCE

STATESBORO, GEORGIA



THESE TWO CIVIC CLUBS ARE ENTHUSIASTIC PROMOTERS  
OF THE DEVELOPMENT PROGRAM OF THE  
GEORGIA NORMAL SCHOOL.



THEY STAND READY TO LEAD OR ASSIST IN THE DEVELOP-  
MENT OF OTHER WORTHY COMMUNITY  
ENTERPRISES.



# THE WOMAN'S CLUB

STATESBORO, GEORGIA



*COMPLIMENTS OF*  
**AUSTIN, NICHOLS & CO.**

**Wholesale Grocers**

NEW YORK, N. Y.



W. H. PATE,  
Montezuma, Georgia  
*Representative*





College Catalogs  
College Annuals  
College Diplomas  
Commencement  
Invitations

## We are Printers of College Annuals

This annual is a product of our plant.

Our lithographed and copper engraved diplomas are a delightful memento of work well done.

Invitations bearing the Foote & Davies imprint are a fitting announcement of a distinctive party. We design and engrave or print unusual invitations and dance programs—engrave commencement invitations, monogrammed and fraternity stationery.

*Wedding Invitations of the aristocratic Southerner are engraved by us.*

***Foote & Davies Co.***  
*Atlanta, Ga.*



THE SCHOOL ANNUAL IS AMONG AMERICA'S MOST PRECIOUS INSTITUTIONS. ☉ ON ITS PAGES LIE THE ARTISTIC EXPRESSION OF YOUNG AMERICA. ☉ BUILT INTO IT IS THE LIFE OF OUR YOUTH. ☉ IT IS A MIRROR THAT REFLECTS THE INSPIRATIONS OF YOUNG MANHOOD AND ASPIRING WOMANHOOD. ☉ FITTING INDEED THAT SO MANY OF THE YEAR BOOKS SHOULD SEEK THE FAITHFULNESS OF REPRODUCTION AND THE FINE EXPERT TOUCH OF THE CRAFTSMANSHIP CHERISHED BY THE

## SOUTHWESTERN ENGRAVING COMPANY

Fort Worth :: Dallas :: Houston :: Tulsa :: Wichita Falls









The End

















